

Data Path : Z:\pestpcbsrv\HPCHEM1\ECD_P\Data\PP101724\
 Data File : PP068026.D
 Signal(s) : Signal #1: ECD1A.ch Signal #2: ECD2B.ch
 Acq On : 18 Oct 2024 07:47
 Operator : YP\AJ
 Sample : P4409-02
 Misc :
 ALS Vial : 37 Sample Multiplier: 1

Instrument :
 ECD_P
 ClientSampleId :
 1092

Integration File signal 1: autoint1.e
 Integration File signal 2: autoint2.e
 Quant Time: Oct 18 08:18:24 2024
 Quant Method : Z:\pestpcbsrv\HPCHEM1\ECD_P\methods\PP100824.M
 Quant Title : GC EXTRACTABLES
 QLast Update : Wed Oct 09 05:48:32 2024
 Response via : Initial Calibration
 Integrator: ChemStation

Volume Inj. : 2 µl
 Signal #1 Phase : ZB-MR1 Signal #2 Phase: ZB-MR2
 Signal #1 Info : 30Mx0.32mmx 0.50µ Signal #2 Info : 30M x 0.32mm x 0.25µm

Compound	RT#1	RT#2	Resp#1	Resp#2	ng/ml	ng/ml

System Monitoring Compounds						
1) SA Tetrachlo...	4.751	4.048	19042774	19644648	20.573	19.442
2) SA Decachlor...	10.660	9.206	24608946	22546856	21.375	20.105
Target Compounds						
5) L1 AR-1016-3	0.000	5.348	0	108697	N.D.	4.035 #
6) L1 AR-1016-4	0.000	5.348f	0	108697	N.D.	4.513 #
7) L1 AR-1016-5	0.000	5.615	0	219160	N.D.	7.207 #
9) L2 AR-1221-2	5.055	4.356	309732	387238	32.739	38.874
10) L2 AR-1221-3	5.055f	4.474f	309732	87691	10.714	2.817 #
11) L3 AR-1232-1	5.055f	4.474f	309732	87691	13.549	3.604 #
12) L3 AR-1232-2	5.671	0.000	224093	0	19.018	N.D. #
13) L3 AR-1232-3	0.000	5.348	0	108697	N.D.	9.101 #
15) L3 AR-1232-5	0.000	5.615	0	219160	N.D.	16.294 #
18) L4 AR-1242-3	0.000	5.348	0	108697	N.D.	4.832 #
20) L4 AR-1242-5	6.859	5.959	192411	79290	7.975	2.768 #
22) L5 AR-1248-2	0.000	5.348f	0	108697	N.D.	3.284 #
24) L5 AR-1248-4	6.859f	5.615	192411	219160	4.757	5.351
25) L5 AR-1248-5	6.859	5.959f	192411	79290	4.851	2.118 #
26) L6 AR-1254-1	0.000	5.959	0	79290	N.D.	1.342 #
27) L6 AR-1254-2	6.993	6.076f	227887	148059	3.448	2.822
28) L6 AR-1254-3	7.345	6.529	100615	426161	1.449	5.122 #
29) L6 AR-1254-4	0.000	6.760	0	55789	N.D.	1.156 #
30) L6 AR-1254-5	0.000	7.177	0	164635	N.D.	2.238 #
31) L7 AR-1260-1	0.000	6.655	0	118609	N.D.	2.082 #
32) L7 AR-1260-2	7.772	6.859	446492	150036	7.057	2.249 #
33) L7 AR-1260-3	0.000	7.001	0	79753	N.D.	1.252 #
34) L7 AR-1260-4	8.328f	7.471	488032	181156	8.108	3.276 #
35) L7 AR-1260-5	8.772f	7.691	260566	263439	2.419	2.154
36) L8 AR-1262-1	8.328f	7.219	488032	29287	6.800	0.372 #
37) L8 AR-1262-2	8.646f	7.471	703819	181156	5.789	2.553 #
38) L8 AR-1262-3	0.000	8.033	0	85559	N.D.	1.498 #
39) L8 AR-1262-4	0.000	8.064	0	56962	N.D.	0.567 #
40) L8 AR-1262-5	9.841	8.608	905920	111232	19.361	2.224 #
41) L9 AR-1268-1	0.000	8.033	0	85559	N.D.	0.538 #
42) L9 AR-1268-2	0.000	8.064	0	56962	N.D.	0.398 #
43) L9 AR-1268-3	0.000	8.284	0	84611	N.D.	0.664 #
44) L9 AR-1268-4	9.841	8.608	905920	111232	17.826	1.970 #
45) L9 AR-1268-5	10.357f	8.921	1053187	129457	2.820	0.342 #

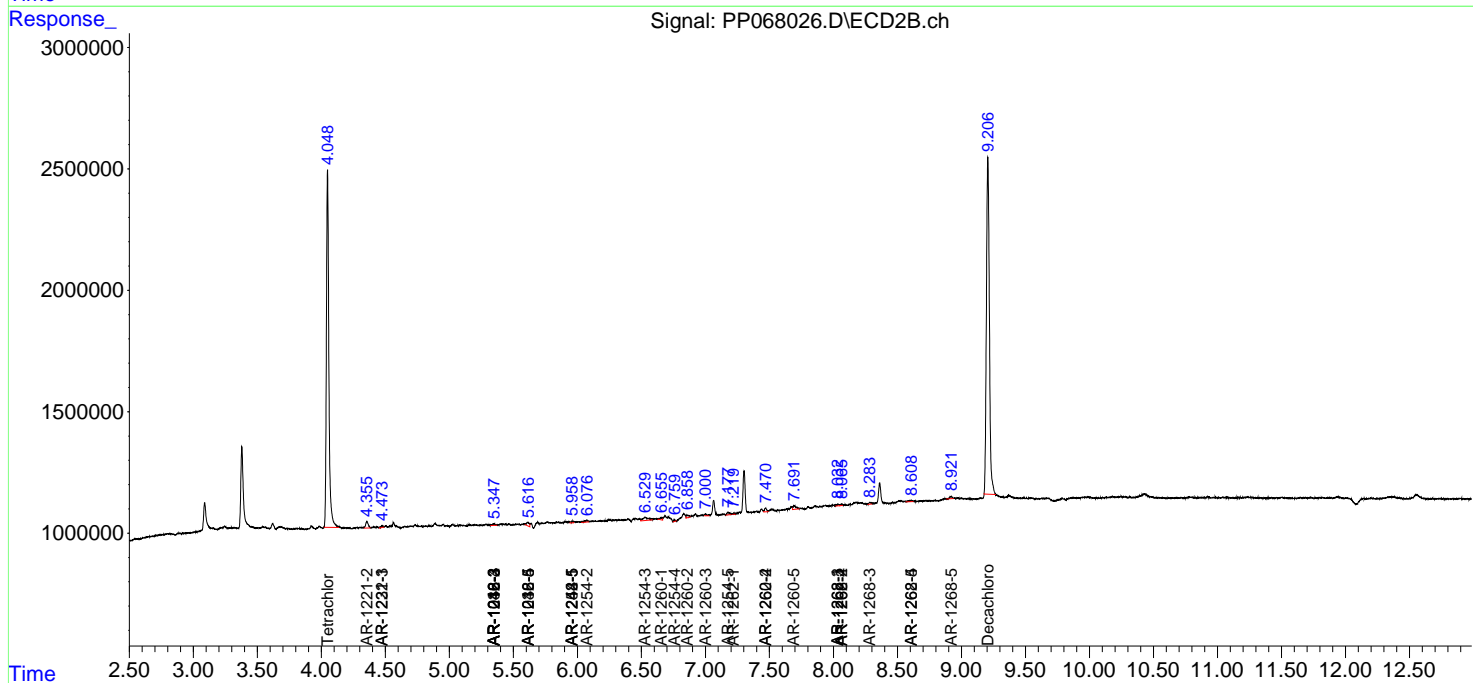
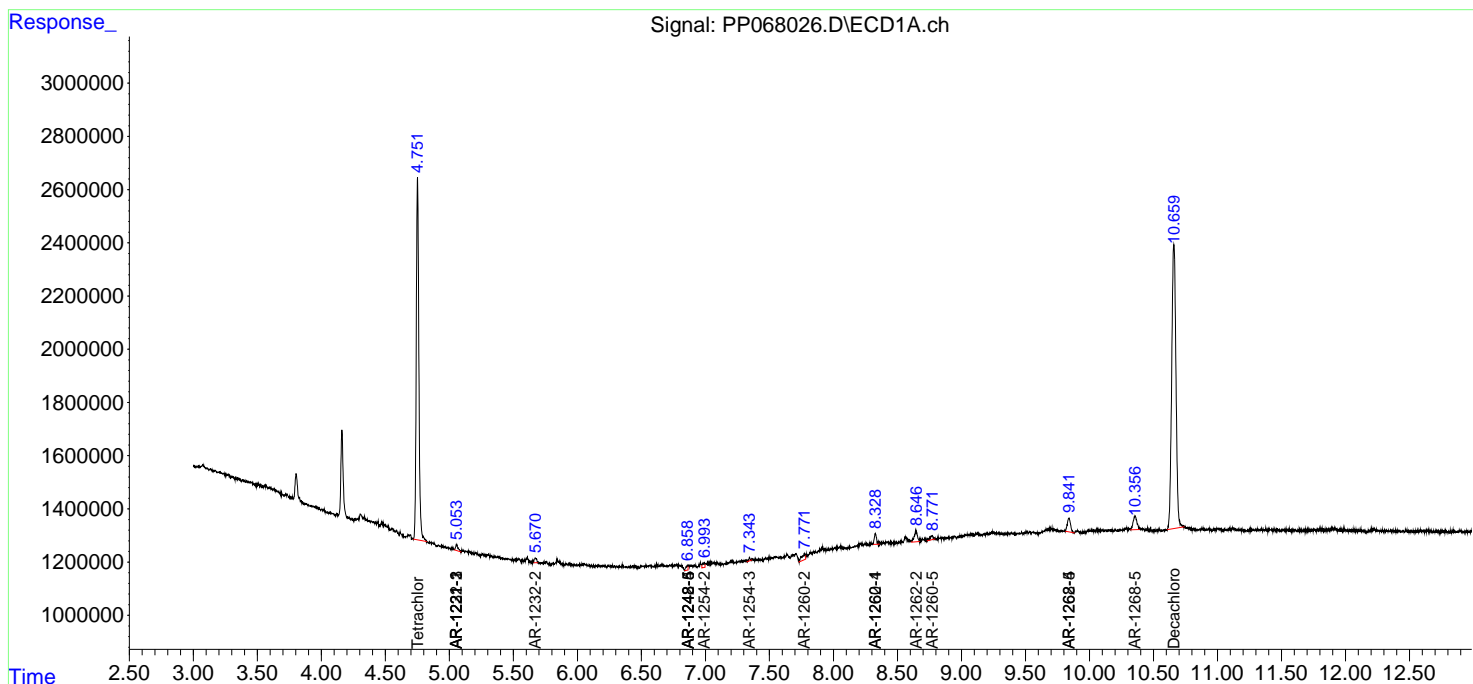
(f)=RT Delta > 1/2 Window (#)=Amounts differ by > 25% (m)=manual int.

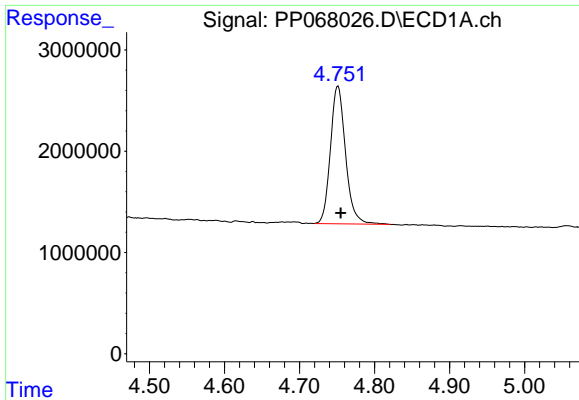
Data Path : Z:\pestpcbsrv\HPCHEM1\ECD_P\Data\PP101724\
 Data File : PP068026.D
 Signal(s) : Signal #1: ECD1A.ch Signal #2: ECD2B.ch
 Acq On : 18 Oct 2024 07:47
 Operator : YP\AJ
 Sample : P4409-02
 Misc :
 ALS Vial : 37 Sample Multiplier: 1

Instrument :
 ECD_P
 ClientSampleId :
 1092

Integration File signal 1: autoint1.e
 Integration File signal 2: autoint2.e
 Quant Time: Oct 18 08:18:24 2024
 Quant Method : Z:\pestpcbsrv\HPCHEM1\ECD_P\methods\PP100824.M
 Quant Title : GC EXTRACTABLES
 QLast Update : Wed Oct 09 05:48:32 2024
 Response via : Initial Calibration
 Integrator: ChemStation

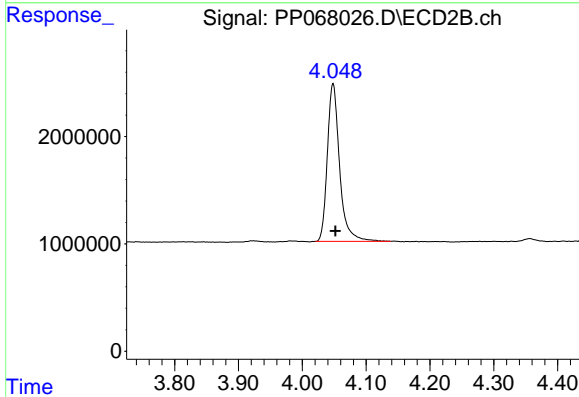
Volume Inj. : 2 µl
 Signal #1 Phase : ZB-MR1 Signal #2 Phase: ZB-MR2
 Signal #1 Info : 30Mx0.32mmx 0.50µ Signal #2 Info : 30M x 0.32mm x 0.25µm



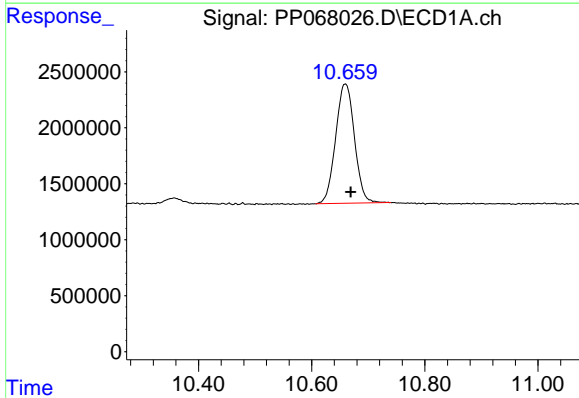


#1 Tetrachloro-m-xylene
 R.T.: 4.751 min
 Delta R.T.: -0.004 min
 Response: 19042774
 Conc: 20.57 ng/ml

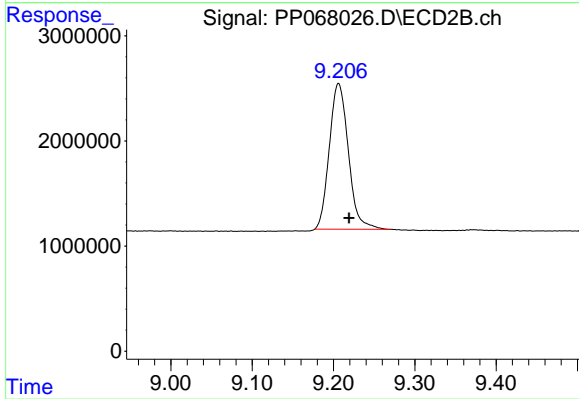
Instrument :
 ECD_P
 ClientSampleId :
 1092



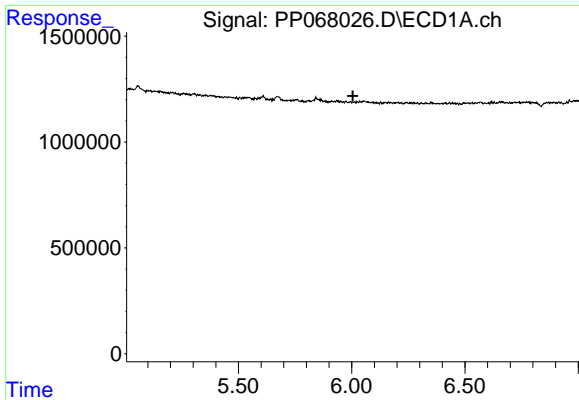
#1 Tetrachloro-m-xylene
 R.T.: 4.048 min
 Delta R.T.: -0.004 min
 Response: 19644648
 Conc: 19.44 ng/ml



#2 Decachlorobiphenyl
 R.T.: 10.660 min
 Delta R.T.: -0.009 min
 Response: 24608946
 Conc: 21.37 ng/ml



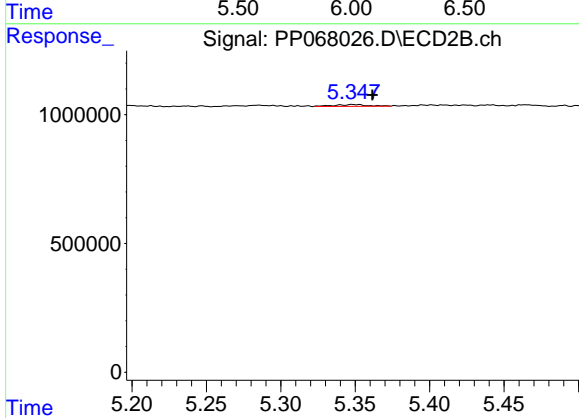
#2 Decachlorobiphenyl
 R.T.: 9.206 min
 Delta R.T.: -0.013 min
 Response: 22546856
 Conc: 20.10 ng/ml



#5 AR-1016-3

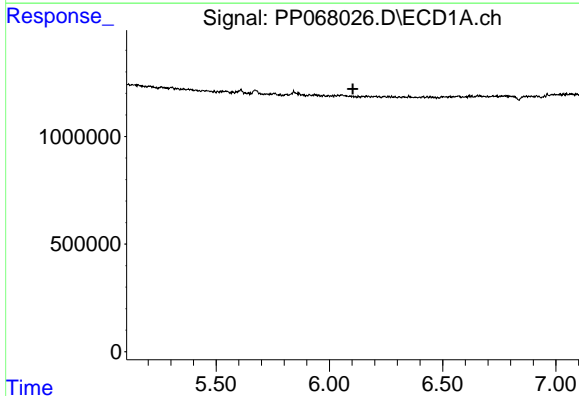
R.T.: 0.000 min
 Exp R.T.: 6.005 min
 Response: 0
 Conc: N.D.

Instrument : ECD_P
 ClientSampleId : 1092



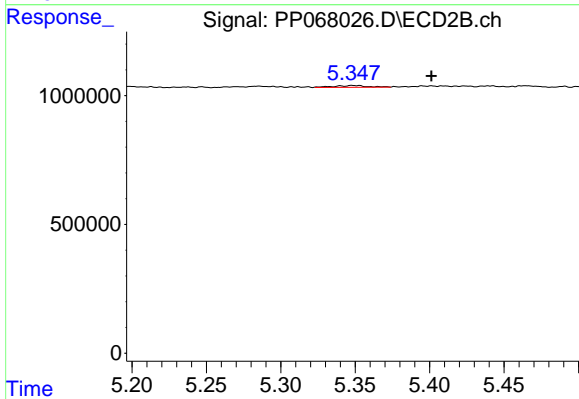
#5 AR-1016-3

R.T.: 5.348 min
 Delta R.T.: -0.014 min
 Response: 108697
 Conc: 4.04 ng/ml



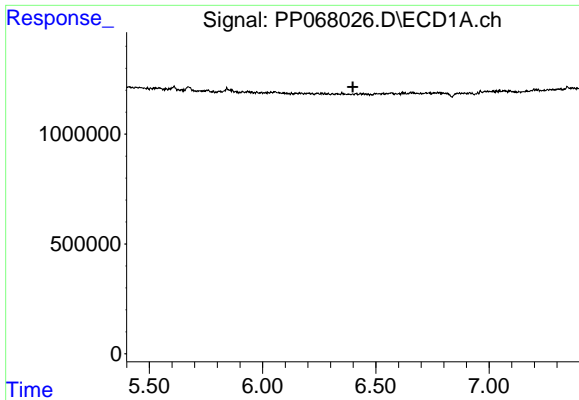
#6 AR-1016-4

R.T.: 0.000 min
 Exp R.T.: 6.103 min
 Response: 0
 Conc: N.D.



#6 AR-1016-4

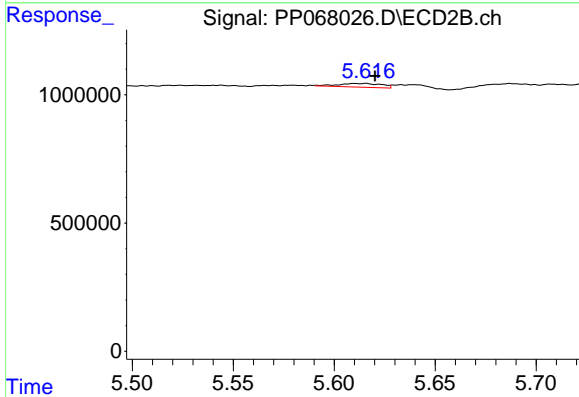
R.T.: 5.348 min
 Delta R.T.: -0.053 min
 Response: 108697
 Conc: 4.51 ng/ml



#7 AR-1016-5

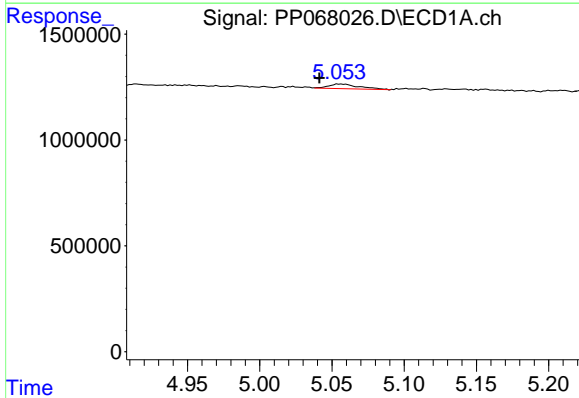
R.T.: 0.000 min
 Exp R.T.: 6.398 min
 Response: 0
 Conc: N.D.

Instrument : ECD_P
 ClientSampleId : 1092



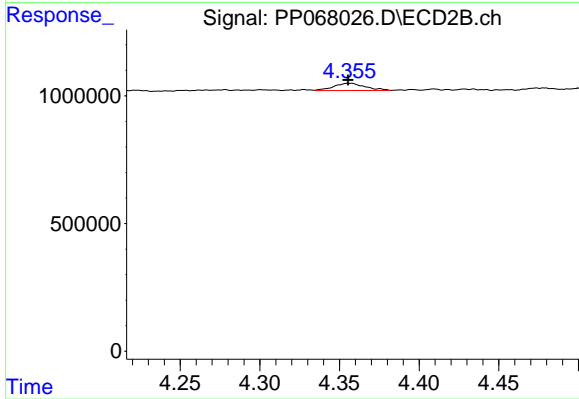
#7 AR-1016-5

R.T.: 5.615 min
 Delta R.T.: -0.005 min
 Response: 219160
 Conc: 7.21 ng/ml



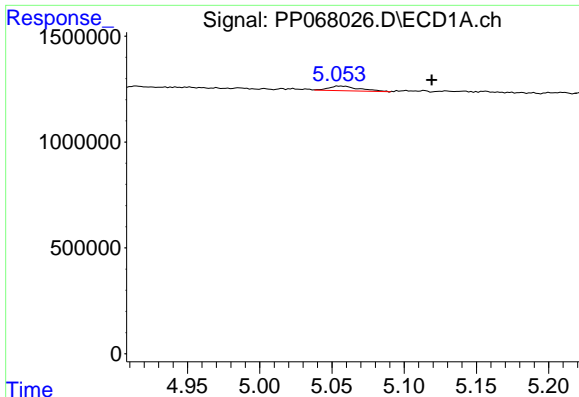
#9 AR-1221-2

R.T.: 5.055 min
 Delta R.T.: 0.014 min
 Response: 309732
 Conc: 32.74 ng/ml



#9 AR-1221-2

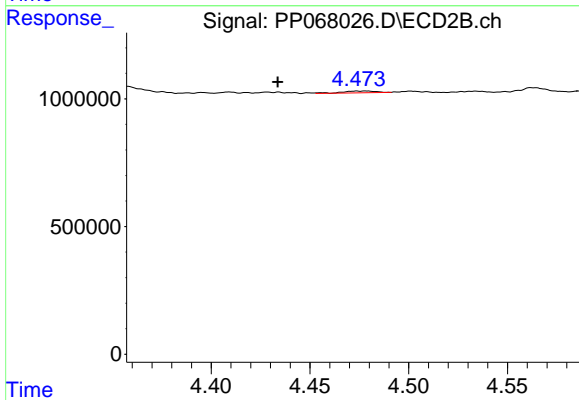
R.T.: 4.356 min
 Delta R.T.: 0.000 min
 Response: 387238
 Conc: 38.87 ng/ml



#10 AR-1221-3

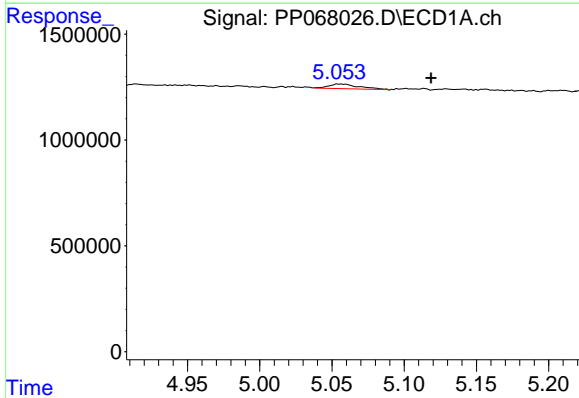
R.T.: 5.055 min
 Delta R.T.: -0.064 min
 Response: 309732
 Conc: 10.71 ng/ml

Instrument :
 ECD_P
 ClientSampleId :
 1092



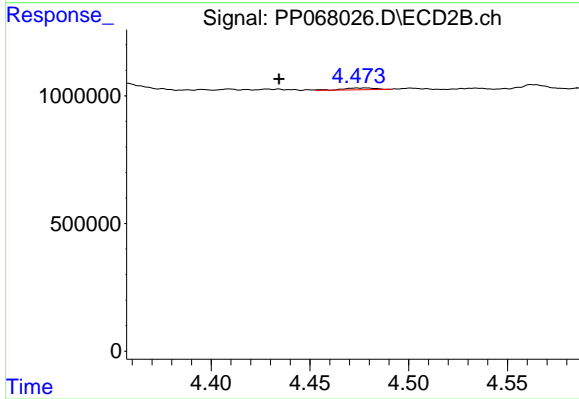
#10 AR-1221-3

R.T.: 4.474 min
 Delta R.T.: 0.040 min
 Response: 87691
 Conc: 2.82 ng/ml



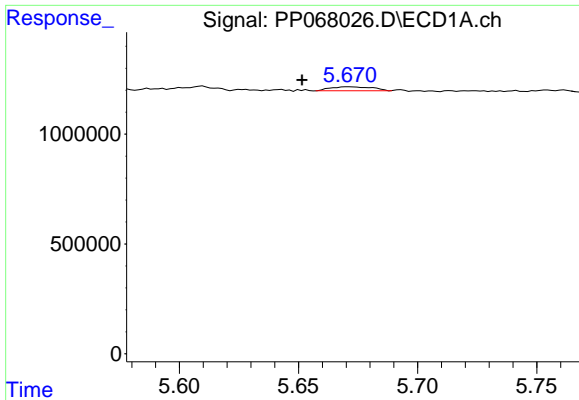
#11 AR-1232-1

R.T.: 5.055 min
 Delta R.T.: -0.064 min
 Response: 309732
 Conc: 13.55 ng/ml



#11 AR-1232-1

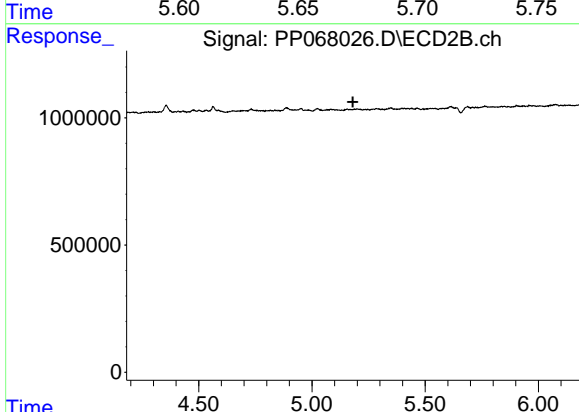
R.T.: 4.474 min
 Delta R.T.: 0.039 min
 Response: 87691
 Conc: 3.60 ng/ml



#12 AR-1232-2

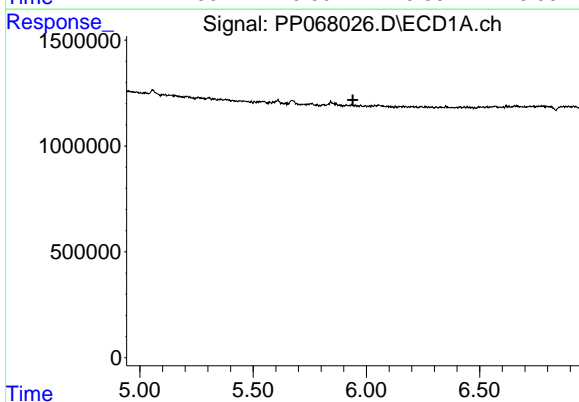
R.T.: 5.671 min
 Delta R.T.: 0.020 min
 Response: 224093
 Conc: 19.02 ng/ml

Instrument :
 ECD_P
 ClientSampleId :
 1092



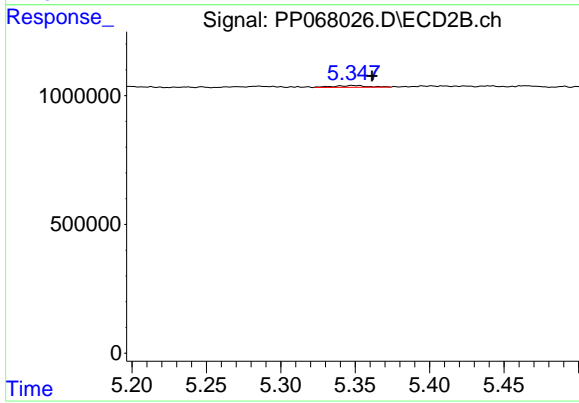
#12 AR-1232-2

R.T.: 0.000 min
 Exp R.T. : 5.181 min
 Response: 0
 Conc: N.D.



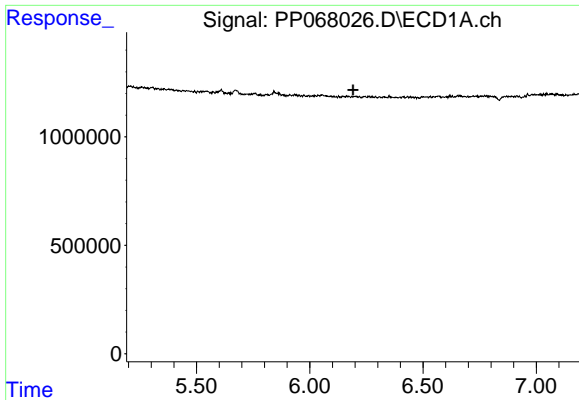
#13 AR-1232-3

R.T.: 0.000 min
 Exp R.T. : 5.940 min
 Response: 0
 Conc: N.D.



#13 AR-1232-3

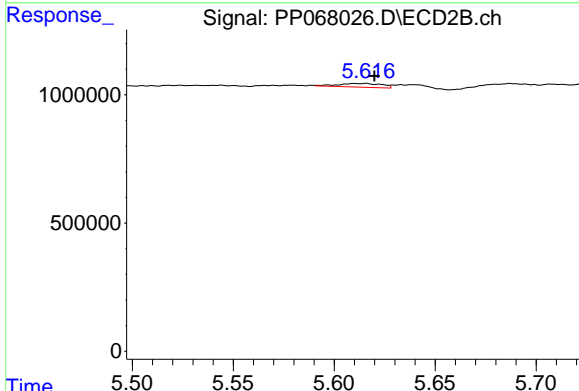
R.T.: 5.348 min
 Delta R.T.: -0.013 min
 Response: 108697
 Conc: 9.10 ng/ml



#15 AR-1232-5

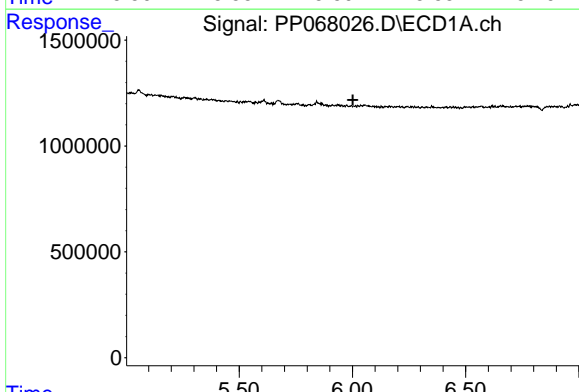
R.T.: 0.000 min
 Exp R.T.: 6.191 min
 Response: 0
 Conc: N.D.

Instrument :
 ECD_P
 ClientSampleId :
 1092



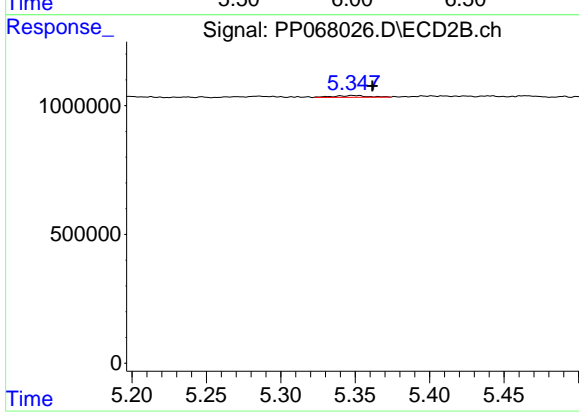
#15 AR-1232-5

R.T.: 5.615 min
 Delta R.T.: -0.004 min
 Response: 219160
 Conc: 16.29 ng/ml



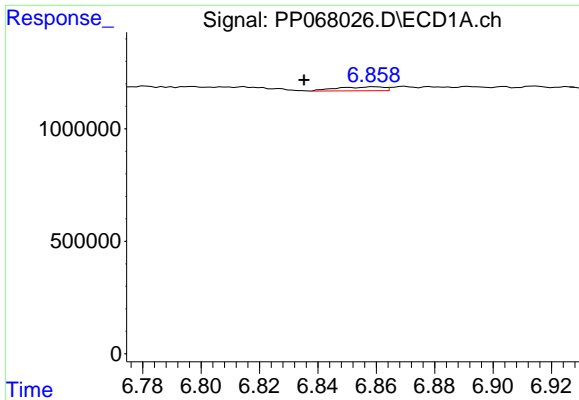
#18 AR-1242-3

R.T.: 0.000 min
 Exp R.T.: 6.002 min
 Response: 0
 Conc: N.D.



#18 AR-1242-3

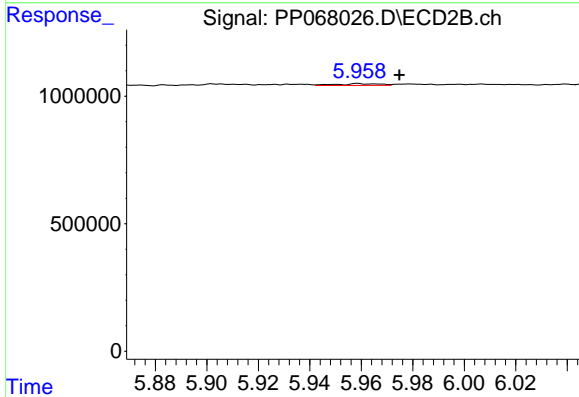
R.T.: 5.348 min
 Delta R.T.: -0.014 min
 Response: 108697
 Conc: 4.83 ng/ml



#20 AR-1242-5

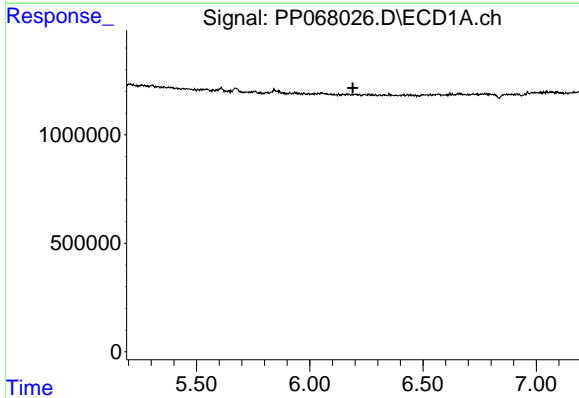
R.T.: 6.859 min
 Delta R.T.: 0.024 min
 Response: 192411
 Conc: 7.98 ng/ml

Instrument :
 ECD_P
 ClientSampleId :
 1092



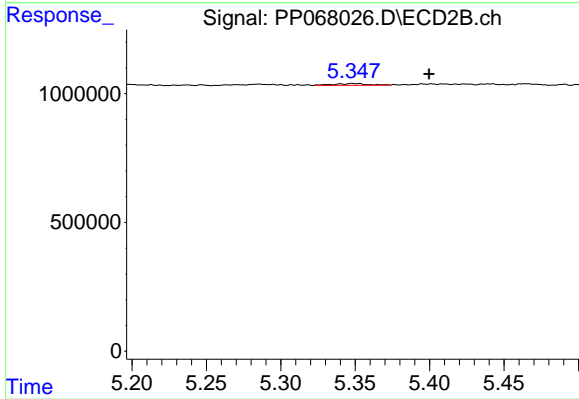
#20 AR-1242-5

R.T.: 5.959 min
 Delta R.T.: -0.016 min
 Response: 79290
 Conc: 2.77 ng/ml



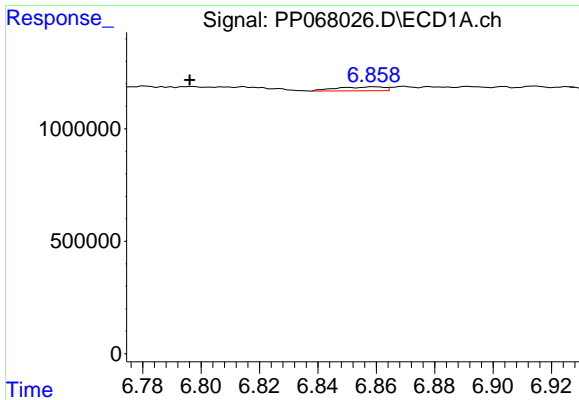
#22 AR-1248-2

R.T.: 0.000 min
 Exp R.T. : 6.191 min
 Response: 0
 Conc: N.D.



#22 AR-1248-2

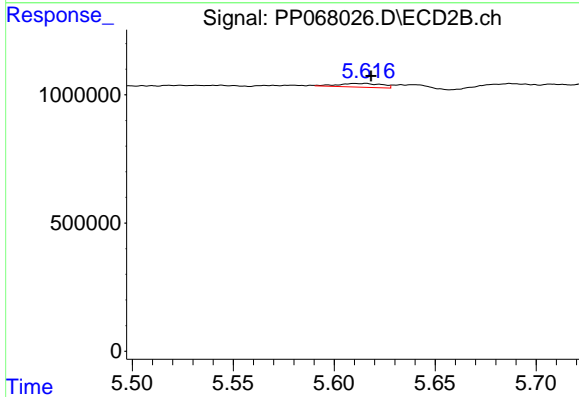
R.T.: 5.348 min
 Delta R.T.: -0.052 min
 Response: 108697
 Conc: 3.28 ng/ml



#24 AR-1248-4

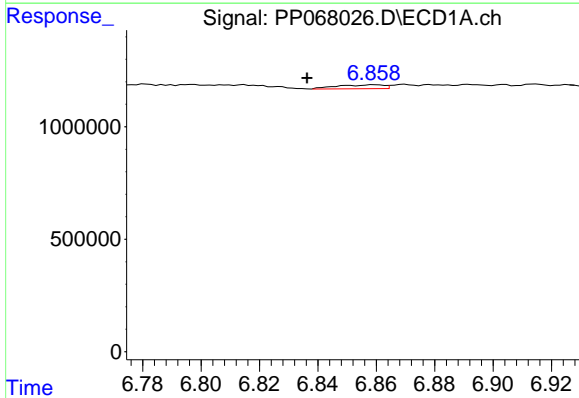
R.T.: 6.859 min
 Delta R.T.: 0.063 min
 Response: 192411
 Conc: 4.76 ng/ml

Instrument :
 ECD_P
 ClientSampleId :
 1092



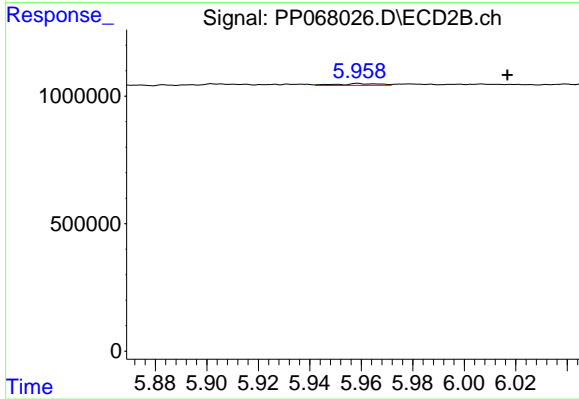
#24 AR-1248-4

R.T.: 5.615 min
 Delta R.T.: -0.003 min
 Response: 219160
 Conc: 5.35 ng/ml



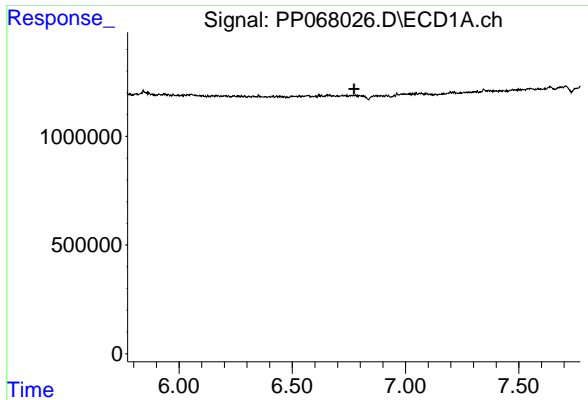
#25 AR-1248-5

R.T.: 6.859 min
 Delta R.T.: 0.023 min
 Response: 192411
 Conc: 4.85 ng/ml



#25 AR-1248-5

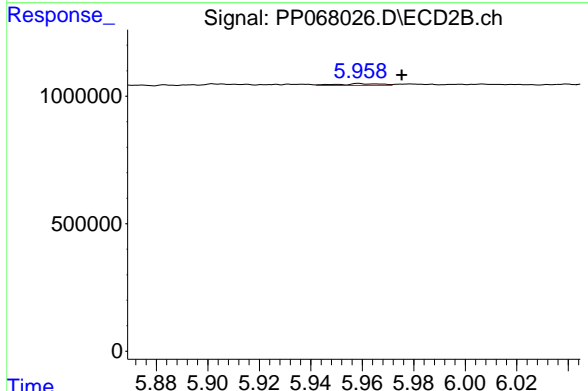
R.T.: 5.959 min
 Delta R.T.: -0.058 min
 Response: 79290
 Conc: 2.12 ng/ml



#26 AR-1254-1

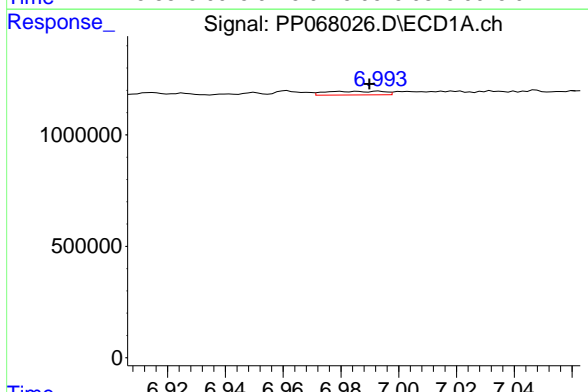
R.T.: 0.000 min
 Exp R.T.: 6.773 min
 Response: 0
 Conc: N.D.

Instrument :
 ECD_P
 ClientSampleId :
 1092



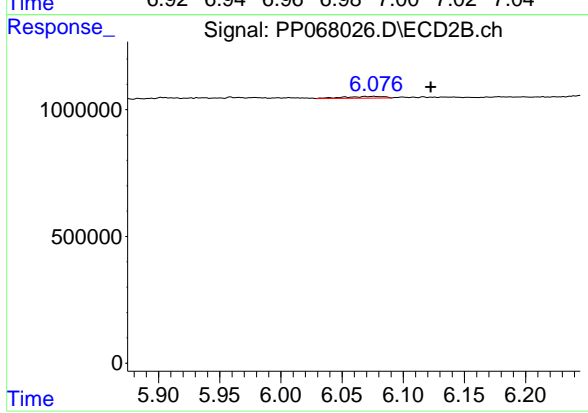
#26 AR-1254-1

R.T.: 5.959 min
 Delta R.T.: -0.017 min
 Response: 79290
 Conc: 1.34 ng/ml



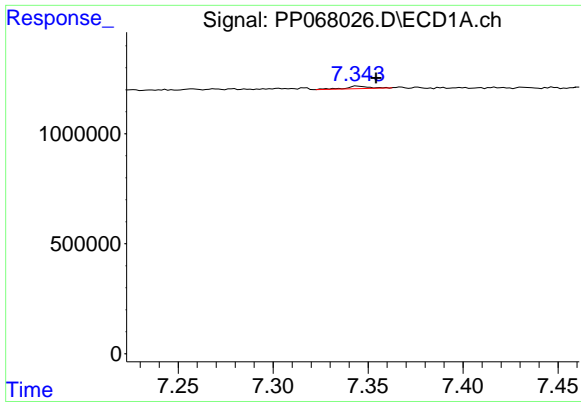
#27 AR-1254-2

R.T.: 6.993 min
 Delta R.T.: 0.003 min
 Response: 227887
 Conc: 3.45 ng/ml



#27 AR-1254-2

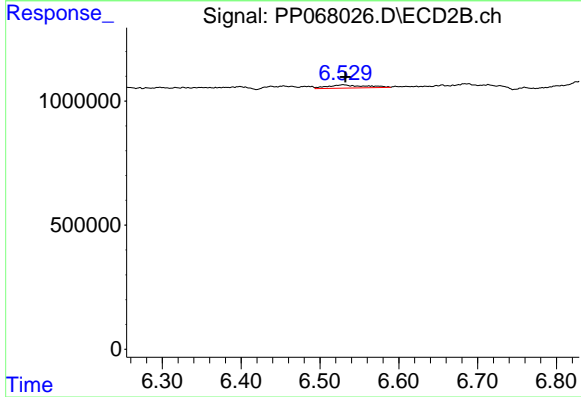
R.T.: 6.076 min
 Delta R.T.: -0.047 min
 Response: 148059
 Conc: 2.82 ng/ml



#28 AR-1254-3

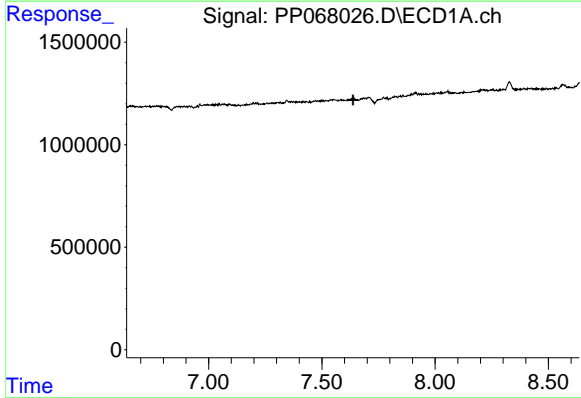
R.T.: 7.345 min
 Delta R.T.: -0.010 min
 Response: 100615
 Conc: 1.45 ng/ml

Instrument :
 ECD_P
 ClientSampleId :
 1092



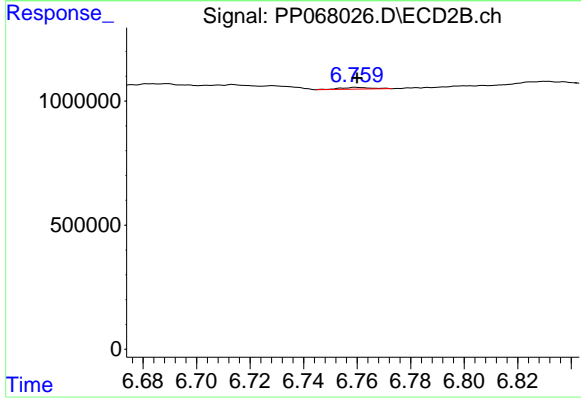
#28 AR-1254-3

R.T.: 6.529 min
 Delta R.T.: -0.003 min
 Response: 426161
 Conc: 5.12 ng/ml



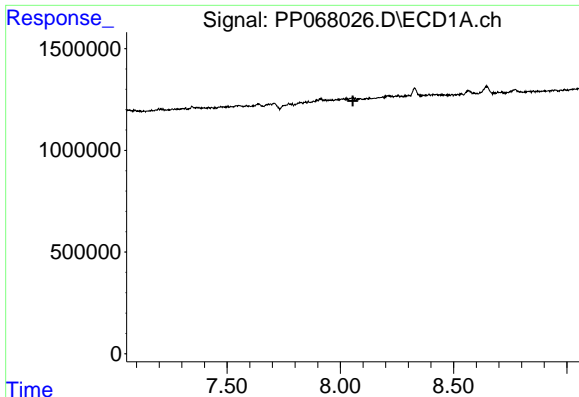
#29 AR-1254-4

R.T.: 0.000 min
 Exp R.T. : 7.637 min
 Response: 0
 Conc: N.D.



#29 AR-1254-4

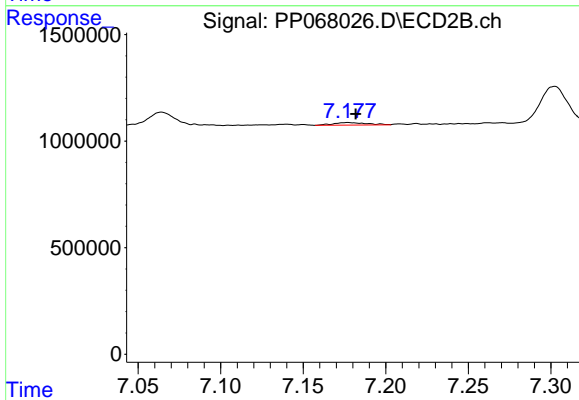
R.T.: 6.760 min
 Delta R.T.: 0.000 min
 Response: 55789
 Conc: 1.16 ng/ml



#30 AR-1254-5

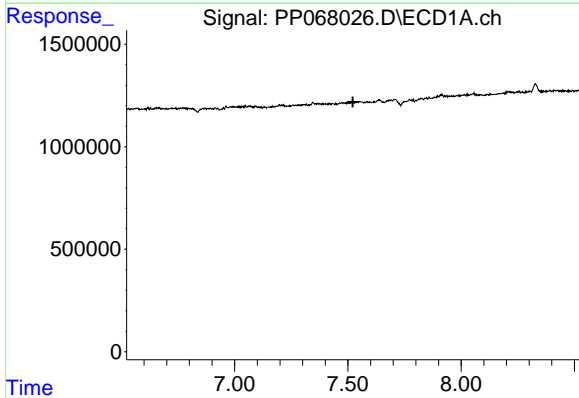
R.T.: 0.000 min
 Exp R.T. : 8.055 min
 Response: 0
 Conc: N.D.

Instrument :
 ECD_P
 ClientSampleId :
 1092



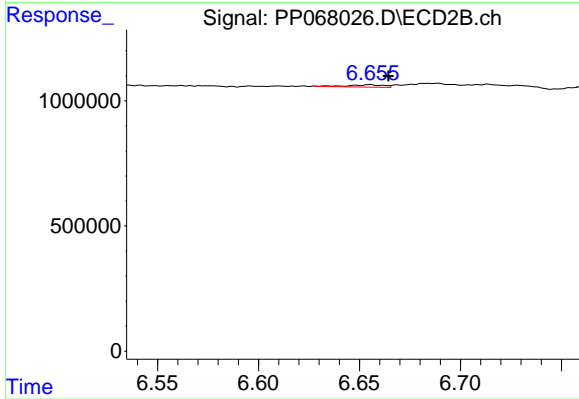
#30 AR-1254-5

R.T.: 7.177 min
 Delta R.T.: -0.005 min
 Response: 164635
 Conc: 2.24 ng/ml



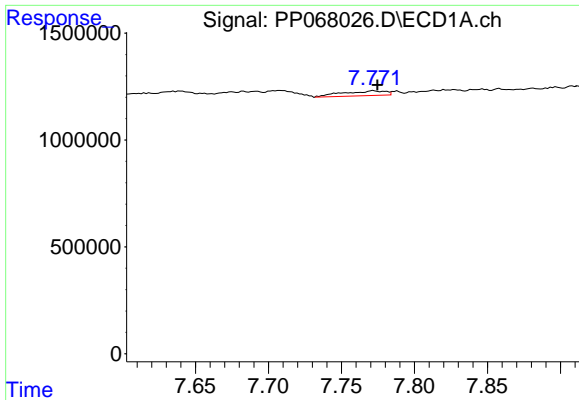
#31 AR-1260-1

R.T.: 0.000 min
 Exp R.T. : 7.522 min
 Response: 0
 Conc: N.D.



#31 AR-1260-1

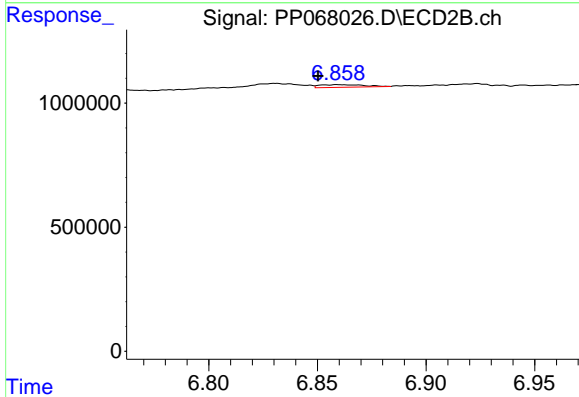
R.T.: 6.655 min
 Delta R.T.: -0.009 min
 Response: 118609
 Conc: 2.08 ng/ml



#32 AR-1260-2

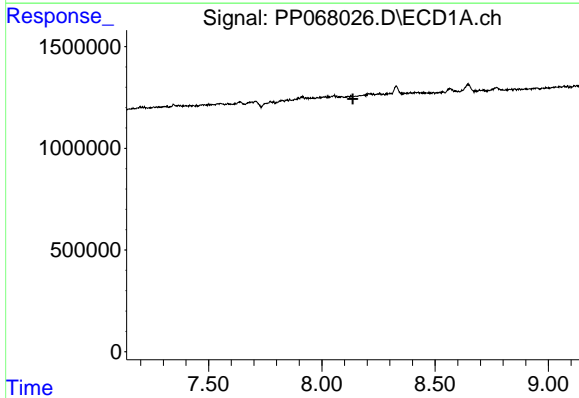
R.T.: 7.772 min
 Delta R.T.: -0.003 min
 Response: 446492
 Conc: 7.06 ng/ml

Instrument :
 ECD_P
 ClientSampleId :
 1092



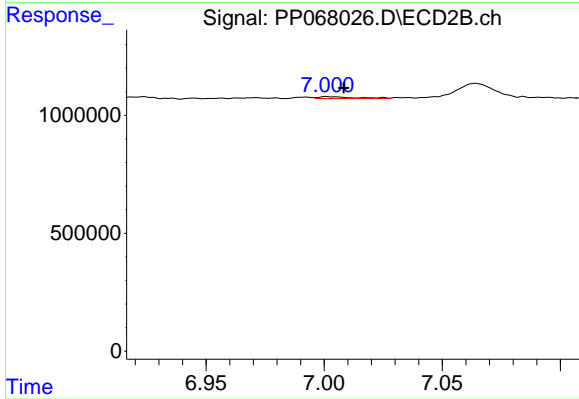
#32 AR-1260-2

R.T.: 6.859 min
 Delta R.T.: 0.009 min
 Response: 150036
 Conc: 2.25 ng/ml



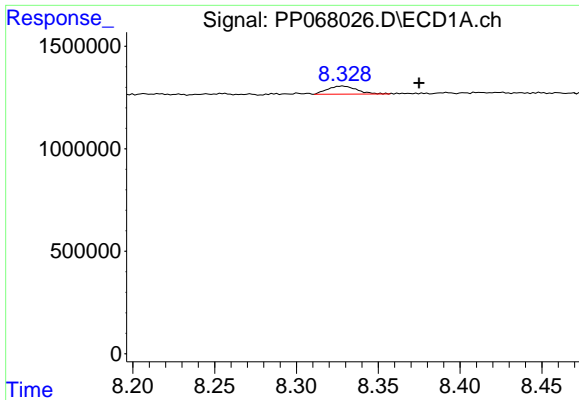
#33 AR-1260-3

R.T.: 0.000 min
 Exp R.T. : 8.137 min
 Response: 0
 Conc: N.D.



#33 AR-1260-3

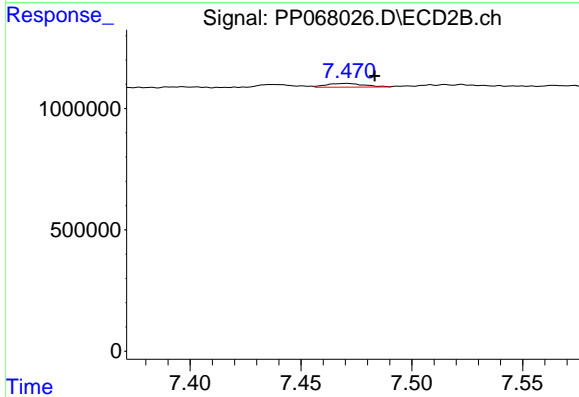
R.T.: 7.001 min
 Delta R.T.: -0.007 min
 Response: 79753
 Conc: 1.25 ng/ml



#34 AR-1260-4

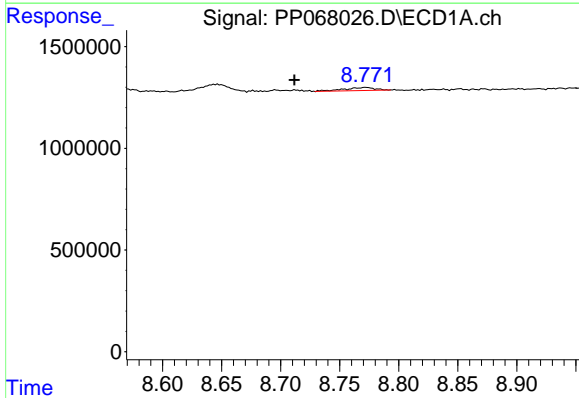
R.T.: 8.328 min
 Delta R.T.: -0.047 min
 Response: 488032
 Conc: 8.11 ng/ml

Instrument :
 ECD_P
 ClientSampleId :
 1092



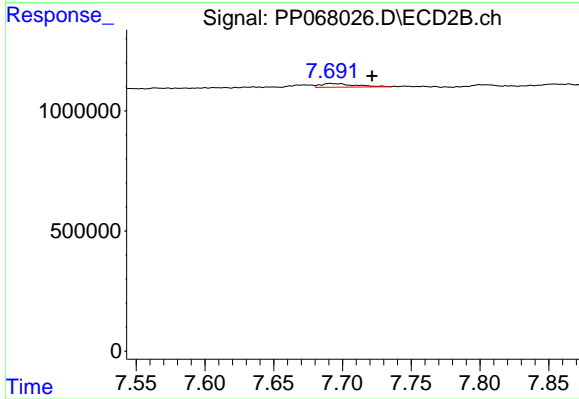
#34 AR-1260-4

R.T.: 7.471 min
 Delta R.T.: -0.013 min
 Response: 181156
 Conc: 3.28 ng/ml



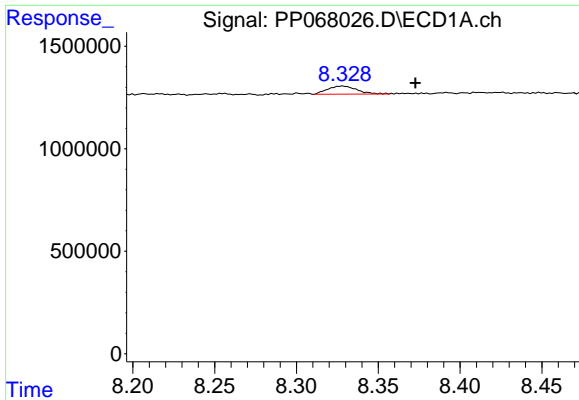
#35 AR-1260-5

R.T.: 8.772 min
 Delta R.T.: 0.061 min
 Response: 260566
 Conc: 2.42 ng/ml



#35 AR-1260-5

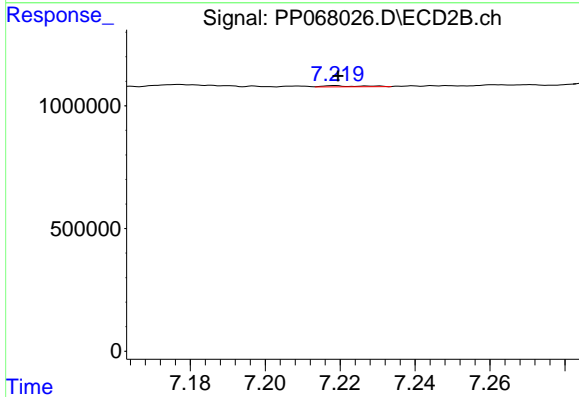
R.T.: 7.691 min
 Delta R.T.: -0.030 min
 Response: 263439
 Conc: 2.15 ng/ml



#36 AR-1262-1

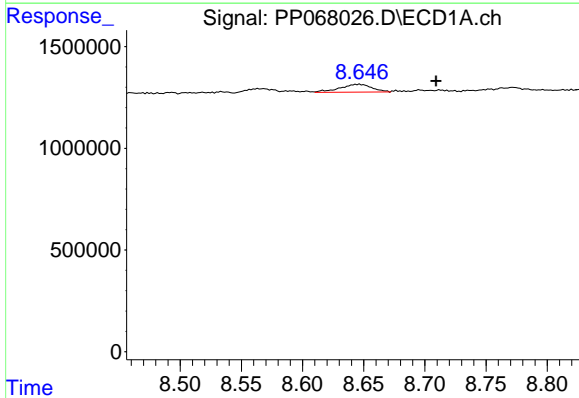
R.T.: 8.328 min
 Delta R.T.: -0.044 min
 Response: 488032
 Conc: 6.80 ng/ml

Instrument :
 ECD_P
 ClientSampleId :
 1092



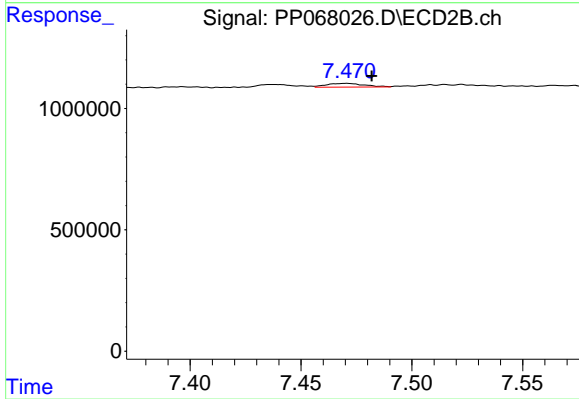
#36 AR-1262-1

R.T.: 7.219 min
 Delta R.T.: 0.000 min
 Response: 29287
 Conc: 0.37 ng/ml



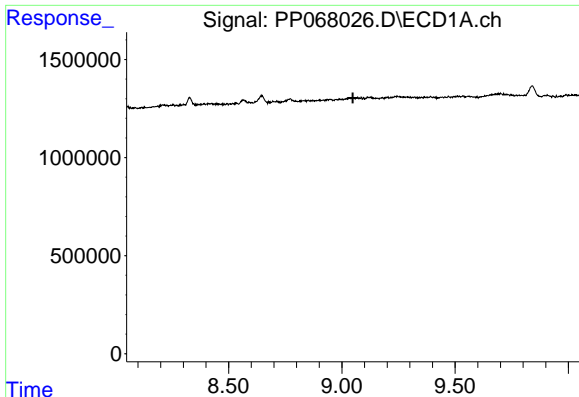
#37 AR-1262-2

R.T.: 8.646 min
 Delta R.T.: -0.063 min
 Response: 703819
 Conc: 5.79 ng/ml



#37 AR-1262-2

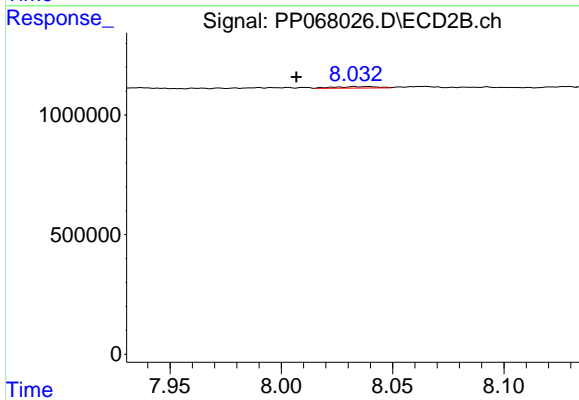
R.T.: 7.471 min
 Delta R.T.: -0.011 min
 Response: 181156
 Conc: 2.55 ng/ml



#38 AR-1262-3

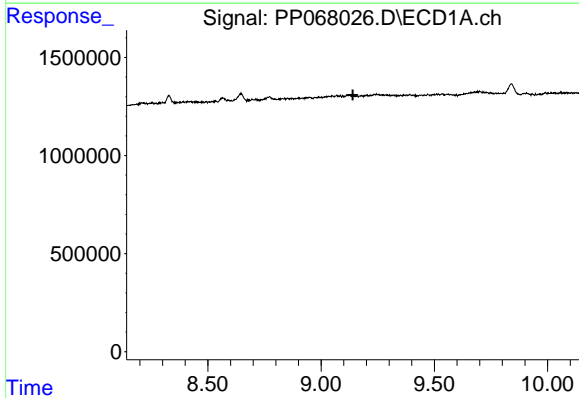
R.T.: 0.000 min
 Exp R.T. : 9.048 min
 Response: 0
 Conc: N.D.

Instrument :
 ECD_P
 ClientSampleId :
 1092



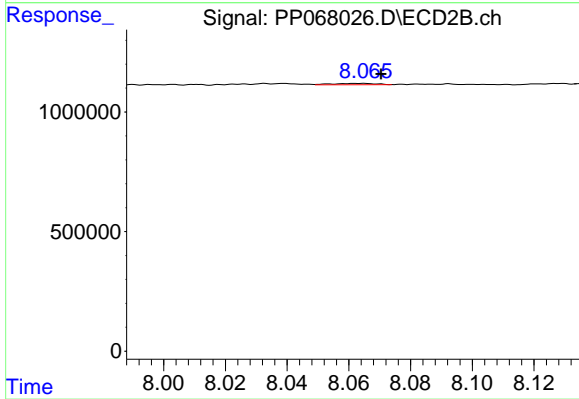
#38 AR-1262-3

R.T.: 8.033 min
 Delta R.T.: 0.026 min
 Response: 85559
 Conc: 1.50 ng/ml



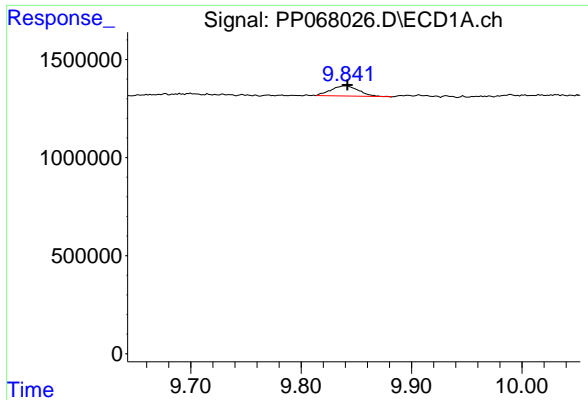
#39 AR-1262-4

R.T.: 0.000 min
 Exp R.T. : 9.140 min
 Response: 0
 Conc: N.D.



#39 AR-1262-4

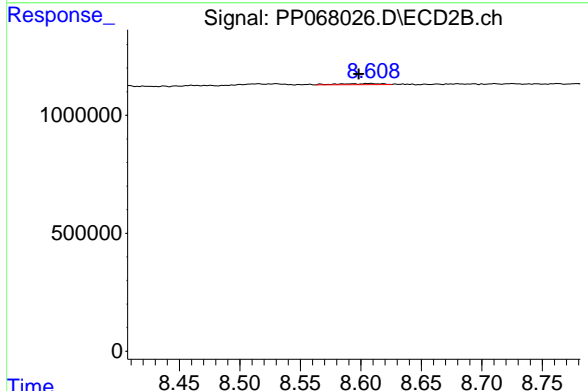
R.T.: 8.064 min
 Delta R.T.: -0.006 min
 Response: 56962
 Conc: 0.57 ng/ml



#40 AR-1262-5

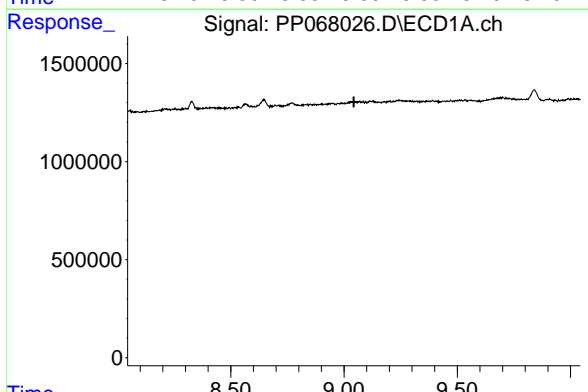
R.T.: 9.841 min
 Delta R.T.: -0.001 min
 Response: 905920
 Conc: 19.36 ng/ml

Instrument :
 ECD_P
 ClientSampleId :
 1092



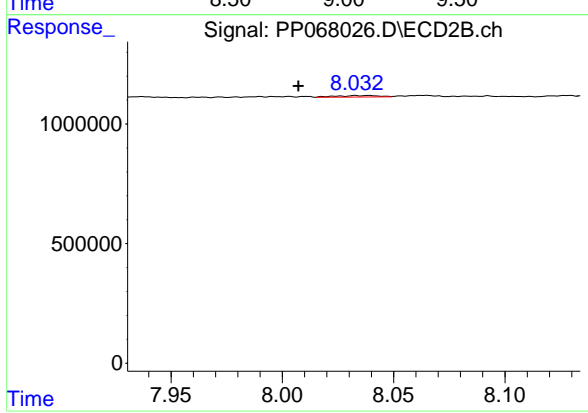
#40 AR-1262-5

R.T.: 8.608 min
 Delta R.T.: 0.010 min
 Response: 111232
 Conc: 2.22 ng/ml



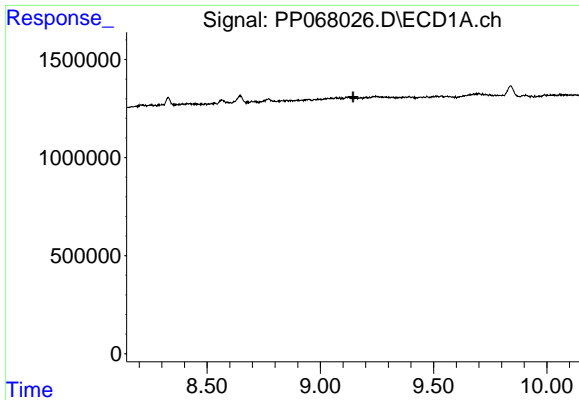
#41 AR-1268-1

R.T.: 0.000 min
 Exp R.T. : 9.043 min
 Response: 0
 Conc: N.D.



#41 AR-1268-1

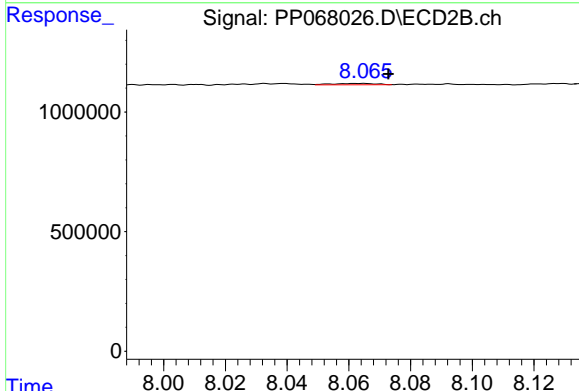
R.T.: 8.033 min
 Delta R.T.: 0.026 min
 Response: 85559
 Conc: 0.54 ng/ml



#42 AR-1268-2

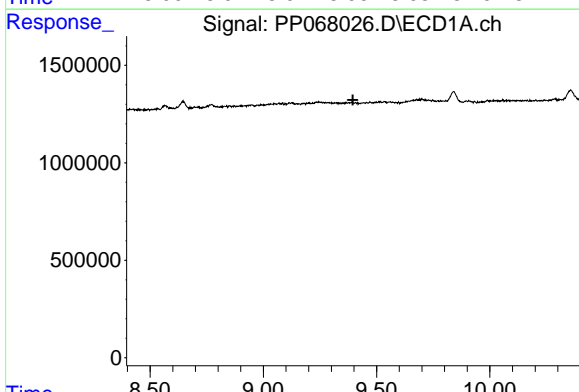
R.T.: 0.000 min
 Exp R.T.: 9.144 min
 Response: 0
 Conc: N.D.

Instrument : ECD_P
 ClientSampleId : 1092



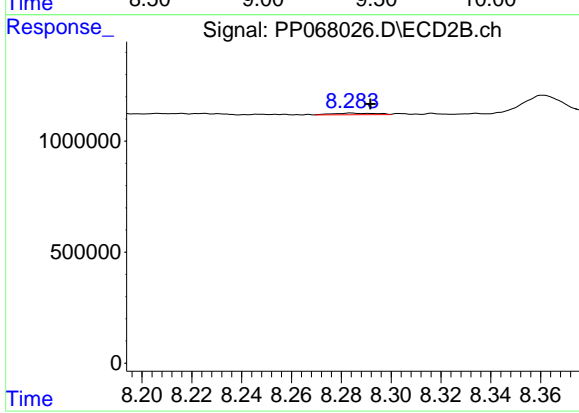
#42 AR-1268-2

R.T.: 8.064 min
 Delta R.T.: -0.008 min
 Response: 56962
 Conc: 0.40 ng/ml



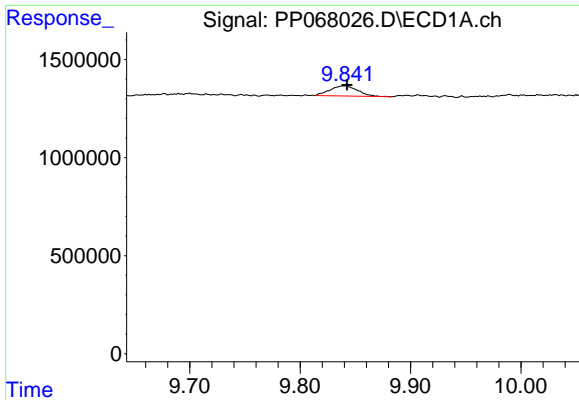
#43 AR-1268-3

R.T.: 0.000 min
 Exp R.T.: 9.395 min
 Response: 0
 Conc: N.D.



#43 AR-1268-3

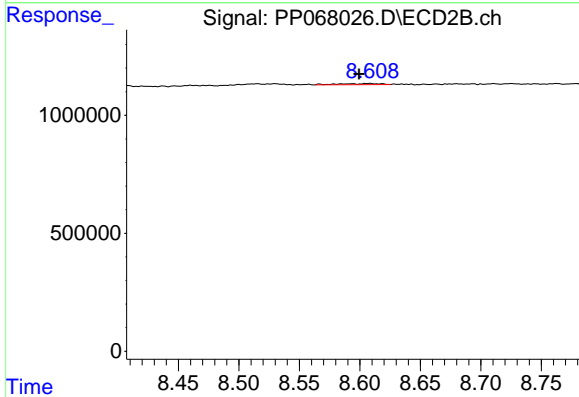
R.T.: 8.284 min
 Delta R.T.: -0.008 min
 Response: 84611
 Conc: 0.66 ng/ml



#44 AR-1268-4

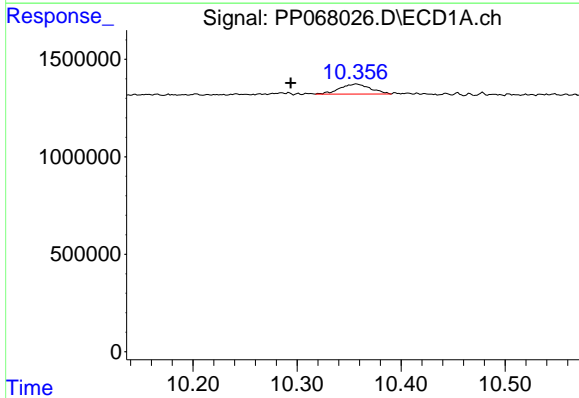
R.T.: 9.841 min
 Delta R.T.: -0.002 min
 Response: 905920
 Conc: 17.83 ng/ml

Instrument :
 ECD_P
 ClientSampleId :
 1092



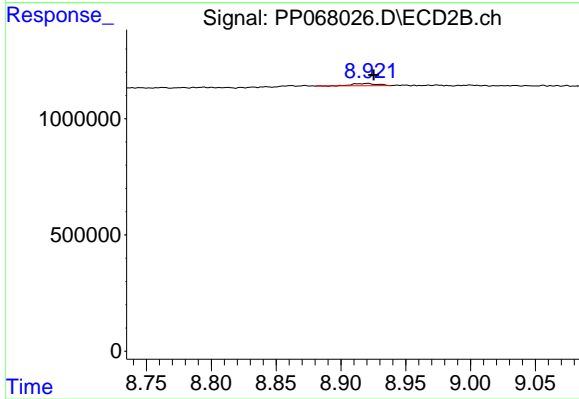
#44 AR-1268-4

R.T.: 8.608 min
 Delta R.T.: 0.009 min
 Response: 111232
 Conc: 1.97 ng/ml



#45 AR-1268-5

R.T.: 10.357 min
 Delta R.T.: 0.063 min
 Response: 1053187
 Conc: 2.82 ng/ml



#45 AR-1268-5

R.T.: 8.921 min
 Delta R.T.: -0.005 min
 Response: 129457
 Conc: 0.34 ng/ml