

Data Path : Z:\pestpcbsrv\HPCHEM1\ECD_P\Data\PP101824\
 Data File : PP068041.D
 Signal(s) : Signal #1: ECD1A.ch Signal #2: ECD2B.ch
 Acq On : 18 Oct 2024 13:13
 Operator : YP\AJ
 Sample : P4431-01
 Misc :
 ALS Vial : 11 Sample Multiplier: 1

Instrument :
 ECD_P
 ClientSampleId :
 72-11934

Integration File signal 1: autoint1.e
 Integration File signal 2: autoint2.e
 Quant Time: Oct 18 13:55:57 2024
 Quant Method : Z:\pestpcbsrv\HPCHEM1\ECD_P\methods\PP100824.M
 Quant Title : GC EXTRACTABLES
 QLast Update : Wed Oct 09 05:48:32 2024
 Response via : Initial Calibration
 Integrator: ChemStation

Volume Inj. : 2 µl
 Signal #1 Phase : ZB-MR1 Signal #2 Phase: ZB-MR2
 Signal #1 Info : 30Mx0.32mmx 0.50µ Signal #2 Info : 30M x 0.32mm x 0.25µm

Compound	RT#1	RT#2	Resp#1	Resp#2	ng/ml	ng/ml

System Monitoring Compounds						
1) SA Tetrachlo...	4.750	4.047	19746781	20412526	21.333	20.202
2) SA Decachlor...	10.657	9.205	22450951	20556128	19.500	18.330

Target Compounds

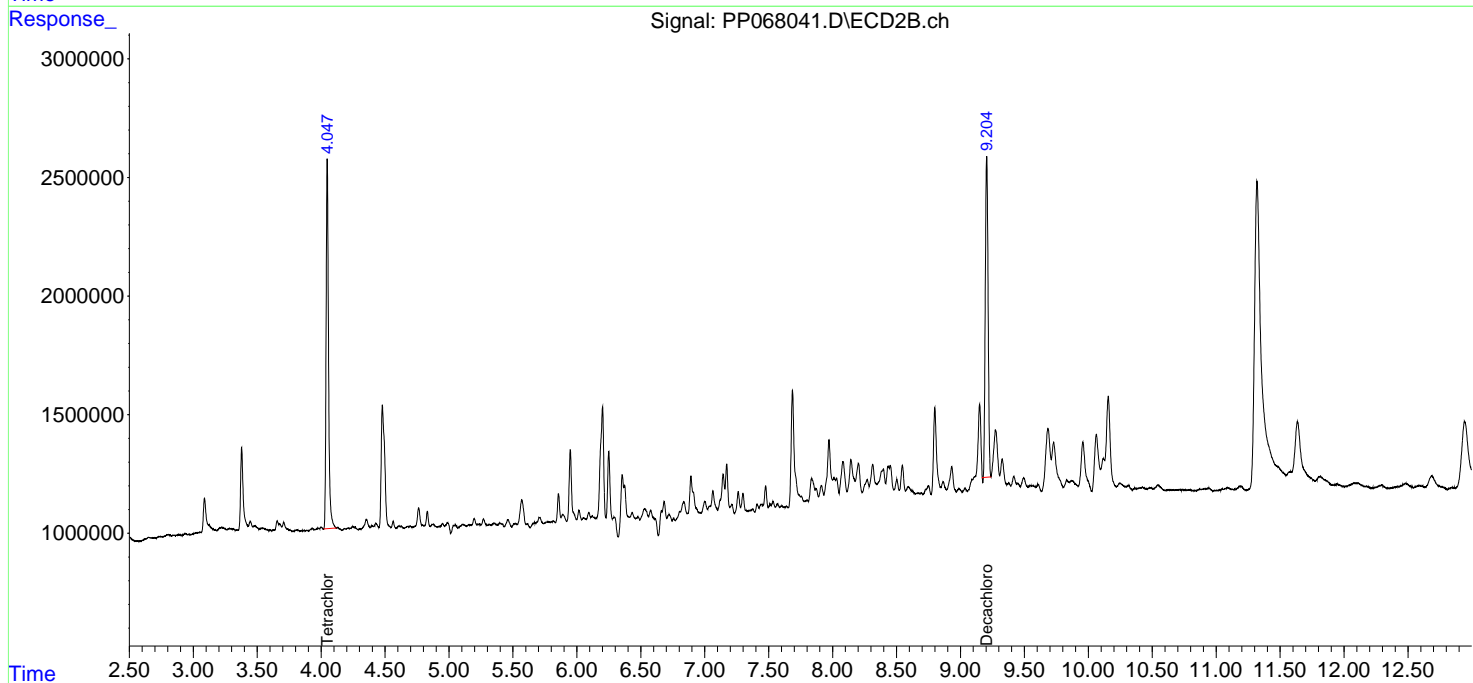
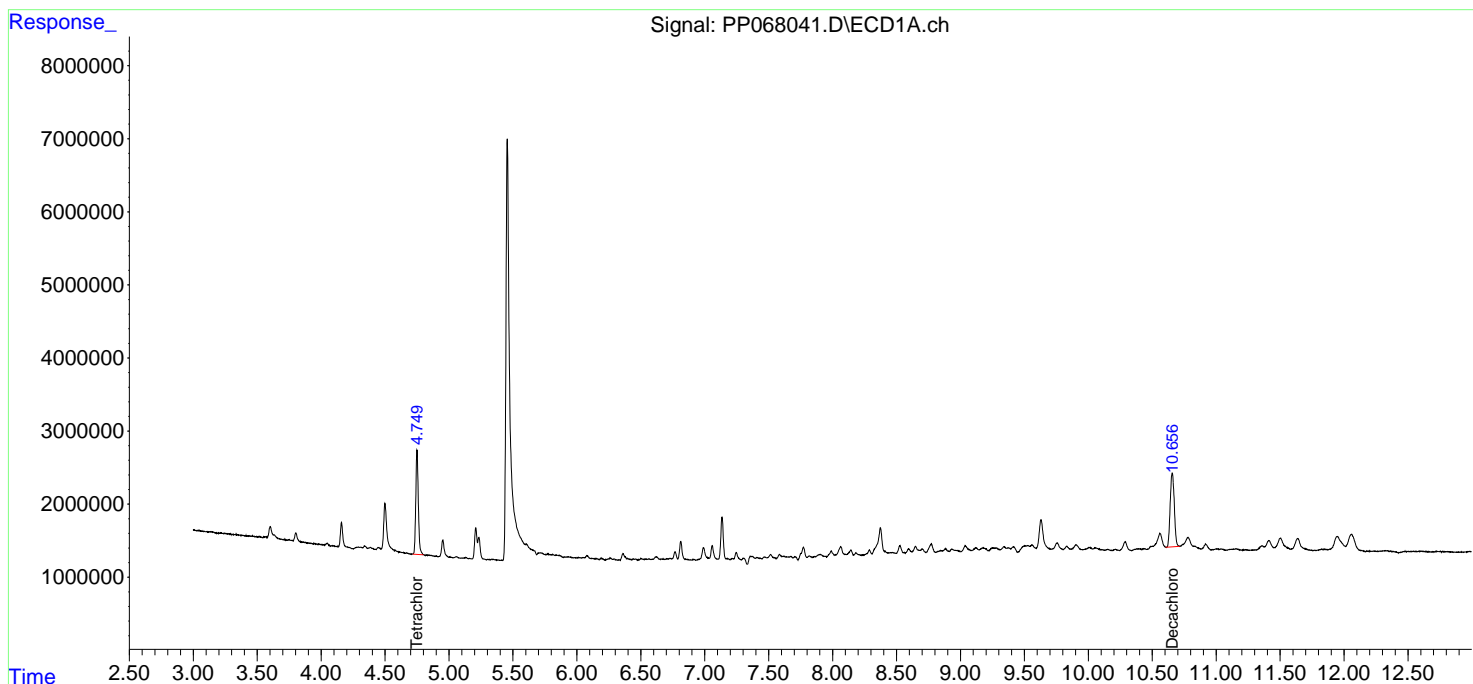
(f)=RT Delta > 1/2 Window (#)=Amounts differ by > 25% (m)=manual int.

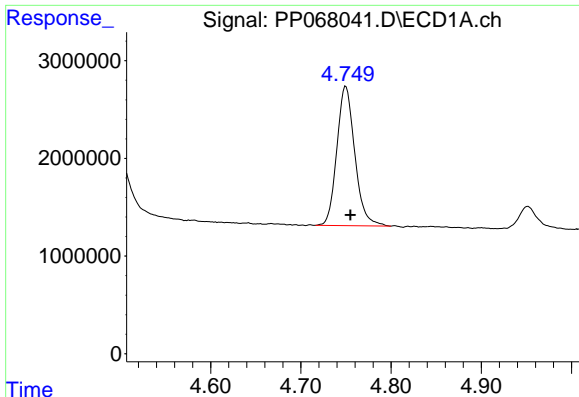
Data Path : Z:\pestpcbsrv\HPCHEM1\ECD_P\Data\PP101824\
 Data File : PP068041.D
 Signal(s) : Signal #1: ECD1A.ch Signal #2: ECD2B.ch
 Acq On : 18 Oct 2024 13:13
 Operator : YP\AJ
 Sample : P4431-01
 Misc :
 ALS Vial : 11 Sample Multiplier: 1

Instrument :
 ECD_P
 ClientSampleId :
 72-11934

Integration File signal 1: autoint1.e
 Integration File signal 2: autoint2.e
 Quant Time: Oct 18 13:55:57 2024
 Quant Method : Z:\pestpcbsrv\HPCHEM1\ECD_P\methods\PP100824.M
 Quant Title : GC EXTRACTABLES
 QLast Update : Wed Oct 09 05:48:32 2024
 Response via : Initial Calibration
 Integrator: ChemStation

Volume Inj. : 2 µl
 Signal #1 Phase : ZB-MR1 Signal #2 Phase: ZB-MR2
 Signal #1 Info : 30Mx0.32mmx 0.50µ Signal #2 Info : 30M x 0.32mm x 0.25µm

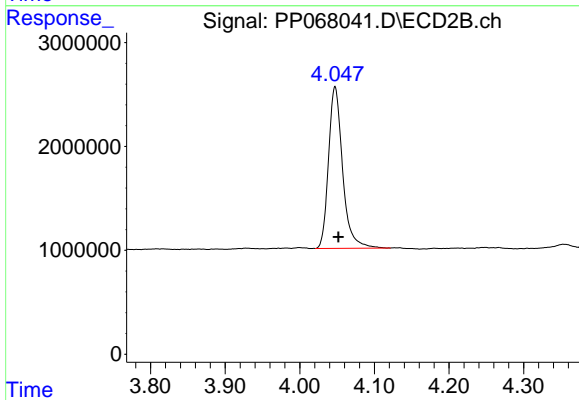




#1 Tetrachloro-m-xylene

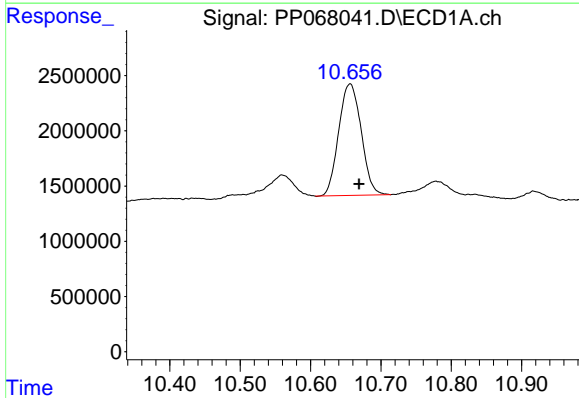
R.T.: 4.750 min
 Delta R.T.: -0.005 min
 Response: 19746781
 Conc: 21.33 ng/ml

Instrument :
 ECD_P
 ClientSampleId :
 72-11934



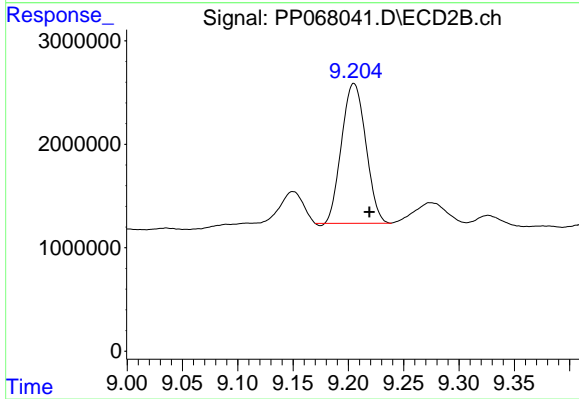
#1 Tetrachloro-m-xylene

R.T.: 4.047 min
 Delta R.T.: -0.005 min
 Response: 20412526
 Conc: 20.20 ng/ml



#2 Decachlorobiphenyl

R.T.: 10.657 min
 Delta R.T.: -0.012 min
 Response: 22450951
 Conc: 19.50 ng/ml



#2 Decachlorobiphenyl

R.T.: 9.205 min
 Delta R.T.: -0.014 min
 Response: 20556128
 Conc: 18.33 ng/ml