

Data Path : Z:\pestpcbsrv\HPCHEM1\ECD_P\Data\PP102120\
 Data File : PP030759.D
 Signal(s) : Signal #1: ECD1A.CH Signal #2: ECD2B.CH
 Acq On : 21 Oct 2020 19:39
 Operator : DD\AJ
 Sample : AR1221ICC500
 Misc :
 ALS Vial : 10 Sample Multiplier: 1

Instrument :
 ECD_P
 ClientSampleId :

Integration File signal 1: autoint1.e
 Integration File signal 2: autoint2.e
 Quant Time: Oct 22 11:15:13 2020
 Quant Method : Z:\pestpcbsrv\HPCHEM1\ECD_O\methods\PP102120.M
 Quant Title : GC EXTRACTABLES
 QLast Update : Thu Oct 22 11:14:19 2020
 Response via : Initial Calibration
 Integrator: ChemStation 6890 Scale Mode: Small noise peaks clipped

Volume Inj. : 2 µl
 Signal #1 Phase : ZB-MR1 Signal #2 Phase: ZB-MR2
 Signal #1 Info : 30Mx0.32mmx 0.50µ Signal #2 Info : 30M x 0.32mm x 0.25µm

Compound	RT#1	RT#2	Resp#1	Resp#2	ng/ml	ng/ml

System Monitoring Compounds						
1) SA Tetrachlo...	4.804	4.090	2812994	2682488	50.000	50.000
2) SA Decachlor...	10.687	9.435	1520024	1563337	50.000	50.000
Target Compounds						
8) L2 AR-1221-1	5.051	4.351	310586	286432	500.000	500.000
9) L2 AR-1221-2	5.148	4.451	230033	216433	500.000	500.000
10) L2 AR-1221-3	5.233	4.540	725483	673666	500.000	500.000

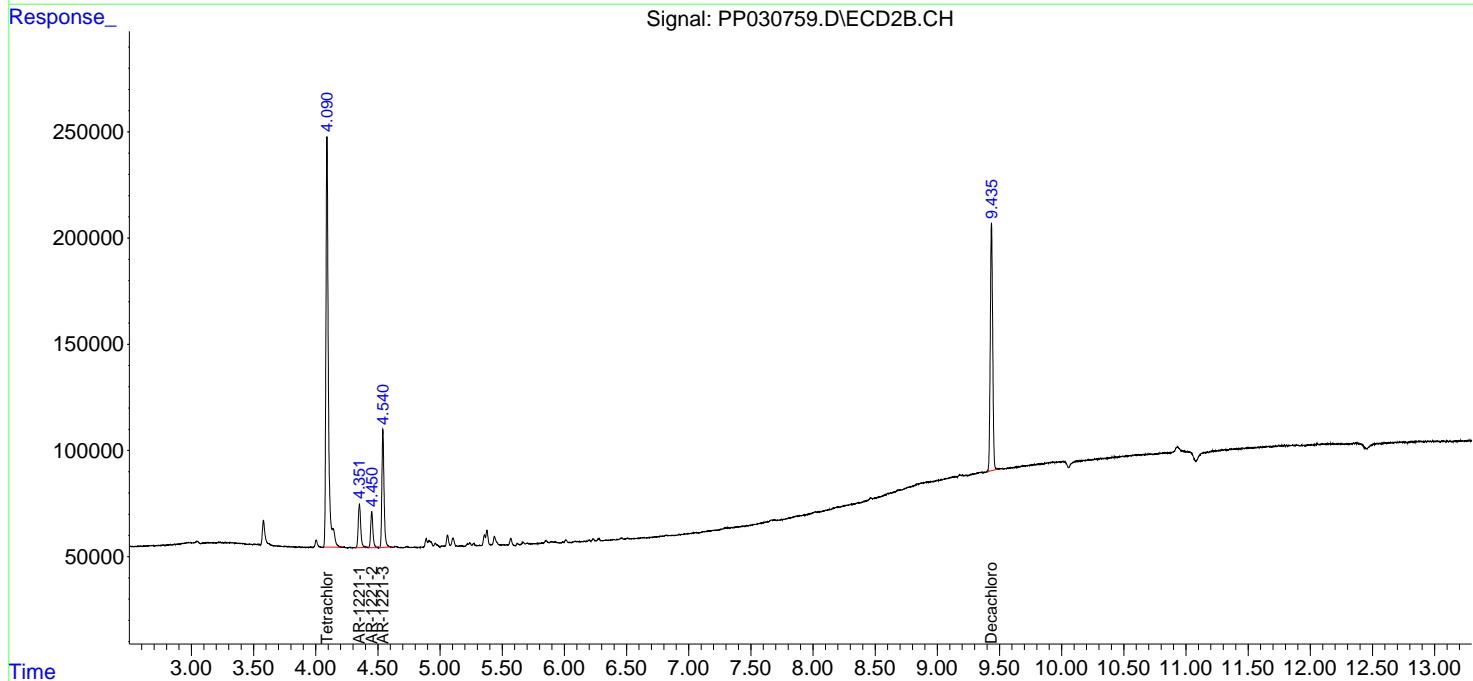
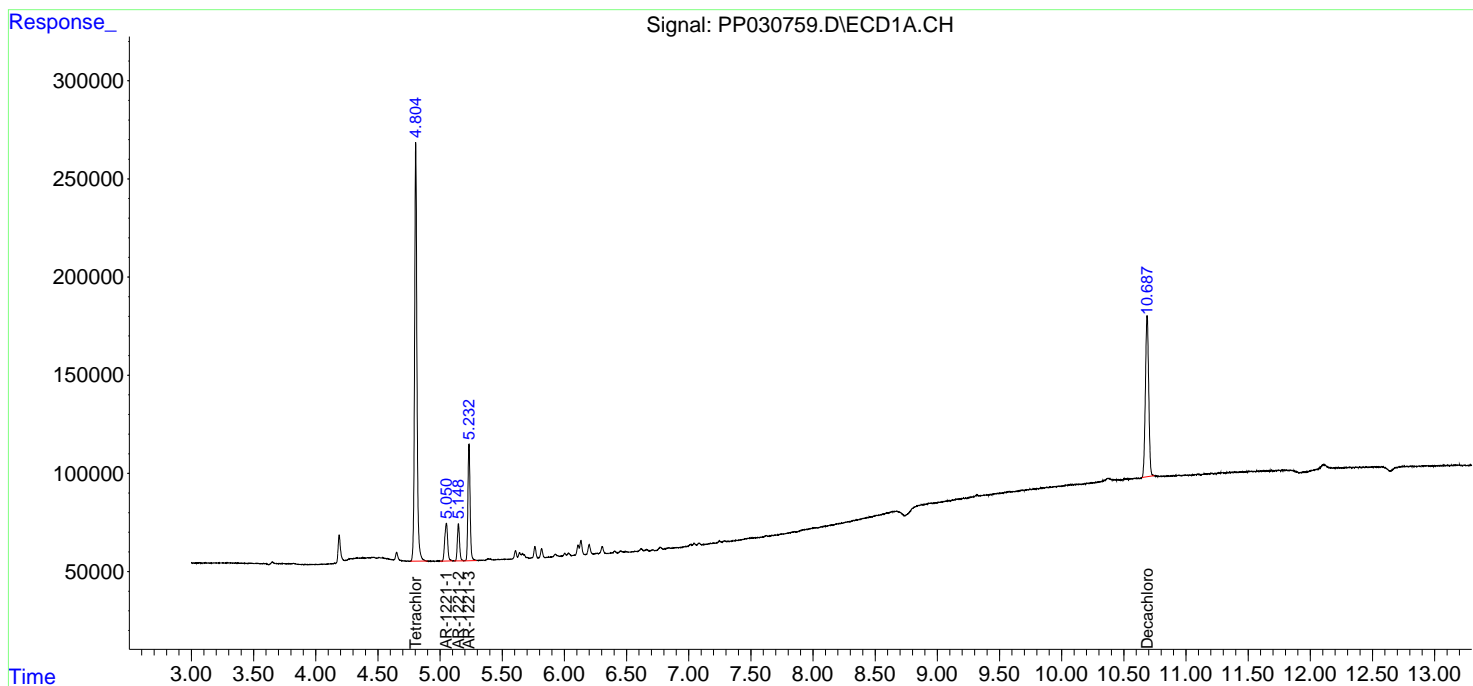
(f)=RT Delta > 1/2 Window (#)=Amounts differ by > 25% (m)=manual int.

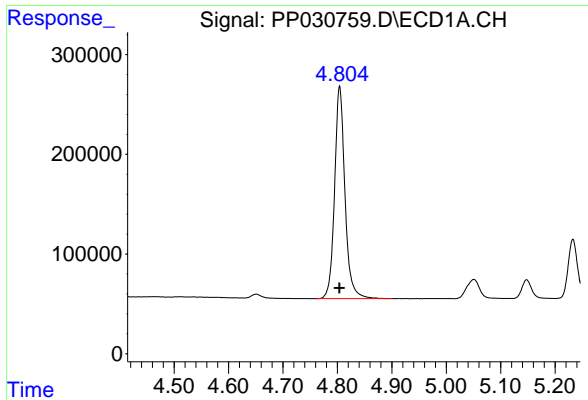
Data Path : Z:\pestpcbsrv\HPCHEM1\ECD_P\Data\PP102120\
 Data File : PP030759.D
 Signal(s) : Signal #1: ECD1A.CH Signal #2: ECD2B.CH
 Acq On : 21 Oct 2020 19:39
 Operator : DD\AJ
 Sample : AR1221ICC500
 Misc :
 ALS Vial : 10 Sample Multiplier: 1

Instrument :
 ECD_P
 ClientSampled :

Integration File signal 1: autoint1.e
 Integration File signal 2: autoint2.e
 Quant Time: Oct 22 11:15:13 2020
 Quant Method : Z:\pestpcbsrv\HPCHEM1\ECD_O\methods\PP102120.M
 Quant Title : GC EXTRACTABLES
 QLast Update : Thu Oct 22 11:14:19 2020
 Response via : Initial Calibration
 Integrator: ChemStation 6890 Scale Mode: Small noise peaks clipped

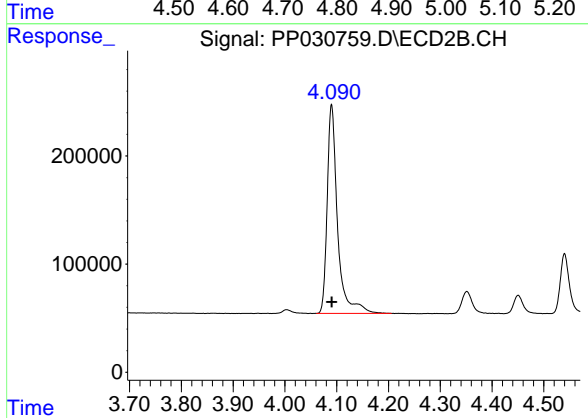
Volume Inj. : 2 µl
 Signal #1 Phase : ZB-MR1 Signal #2 Phase: ZB-MR2
 Signal #1 Info : 30Mx0.32mmx 0.50µ Signal #2 Info : 30M x 0.32mm x 0.25µm



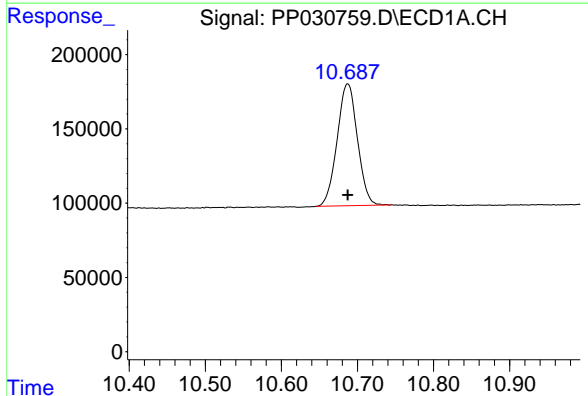


#1 Tetrachloro-m-xylene
 R.T.: 4.804 min
 Delta R.T.: 0.000 min
 Response: 2812994
 Conc: 50.00 ng/ml

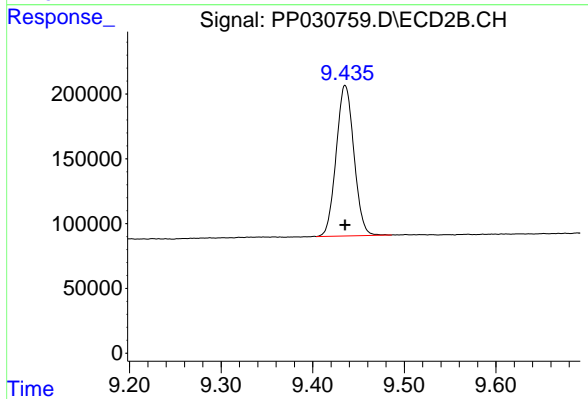
Instrument :
 ECD_P
 ClientSampleId :



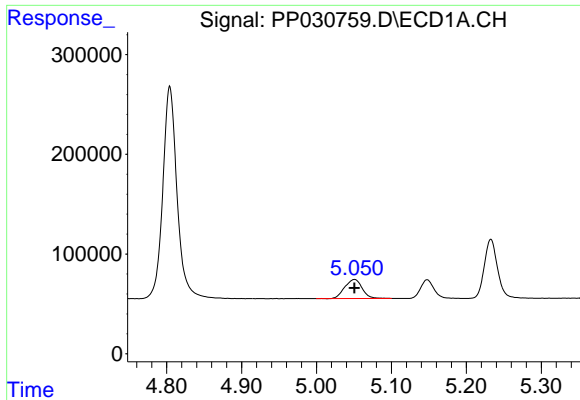
#1 Tetrachloro-m-xylene
 R.T.: 4.090 min
 Delta R.T.: 0.000 min
 Response: 2682488
 Conc: 50.00 ng/ml



#2 Decachlorobiphenyl
 R.T.: 10.687 min
 Delta R.T.: 0.000 min
 Response: 1520024
 Conc: 50.00 ng/ml

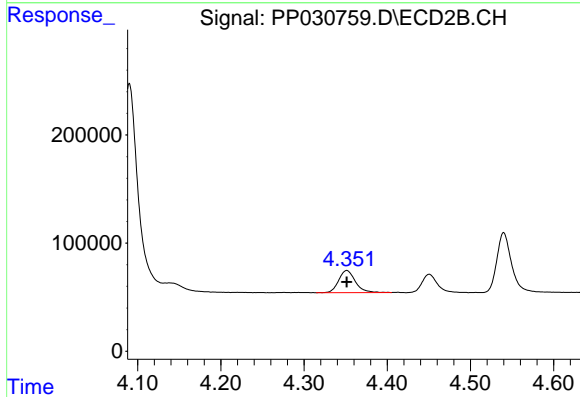


#2 Decachlorobiphenyl
 R.T.: 9.435 min
 Delta R.T.: 0.000 min
 Response: 1563337
 Conc: 50.00 ng/ml

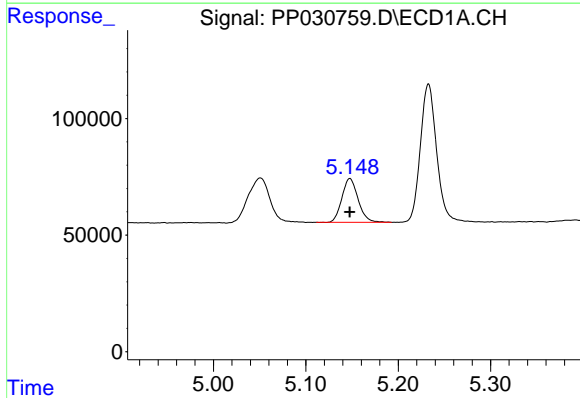


#8 AR-1221-1
 R.T.: 5.051 min
 Delta R.T.: 0.000 min
 Response: 310586
 Conc: 500.00 ng/ml

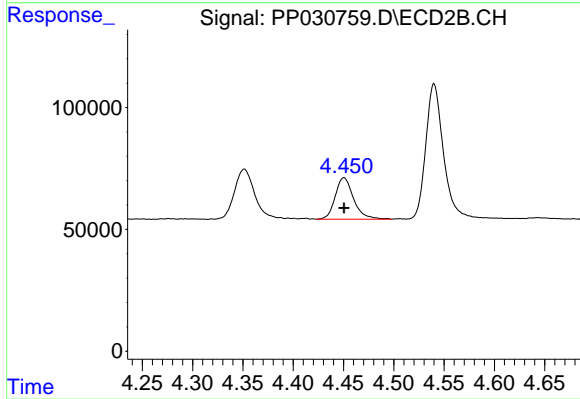
Instrument :
 ECD_P
 ClientSampled :



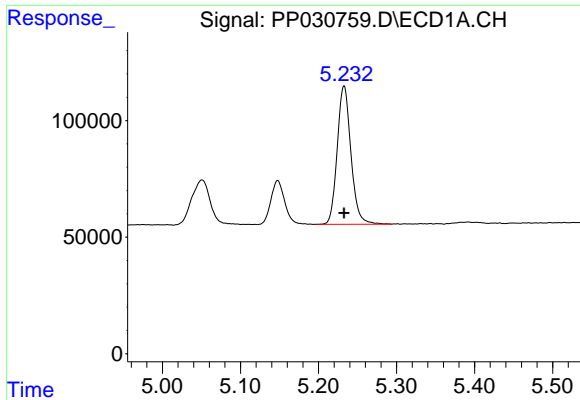
#8 AR-1221-1
 R.T.: 4.351 min
 Delta R.T.: 0.000 min
 Response: 286432
 Conc: 500.00 ng/ml



#9 AR-1221-2
 R.T.: 5.148 min
 Delta R.T.: 0.000 min
 Response: 230033
 Conc: 500.00 ng/ml



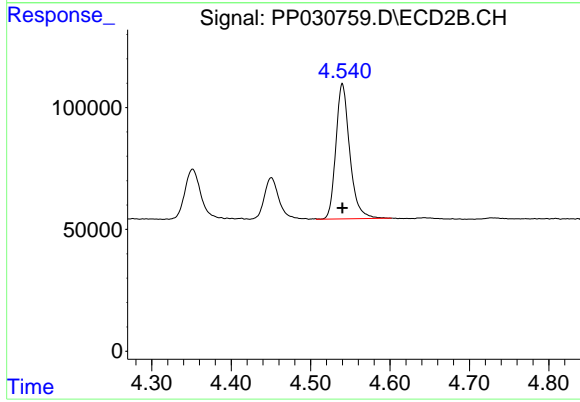
#9 AR-1221-2
 R.T.: 4.451 min
 Delta R.T.: 0.000 min
 Response: 216433
 Conc: 500.00 ng/ml



#10 AR-1221-3

R.T.: 5.233 min
Delta R.T.: 0.000 min
Response: 725483
Conc: 500.00 ng/ml

Instrument :
ECD_P
ClientSampleId :



#10 AR-1221-3

R.T.: 4.540 min
Delta R.T.: 0.000 min
Response: 673666
Conc: 500.00 ng/ml