

Data Path : Z:\pestpcbsrv\HPCHEM1\ECD_P\Data\PP102120\
 Data File : PP030763.D
 Signal(s) : Signal #1: ECD1A.CH Signal #2: ECD2B.CH
 Acq On : 21 Oct 2020 20:46
 Operator : DD\AJ
 Sample : AR1221PP1021ICV500
 Misc :
 ALS Vial : 14 Sample Multiplier: 1

Instrument :
 ECD_P
 ClientSampleId :
 ICVPP102120

Integration File signal 1: autoint1.e
 Integration File signal 2: autoint2.e
 Quant Time: Oct 22 12:00:42 2020
 Quant Method : Z:\pestpcbsrv\HPCHEM1\ECD_O\methods\PP102120.M
 Quant Title : GC EXTRACTABLES
 QLast Update : Thu Oct 22 11:59:26 2020
 Response via : Initial Calibration
 Integrator: ChemStation 6890 Scale Mode: Small noise peaks clipped

Volume Inj. : 2 µl
 Signal #1 Phase : ZB-MR1 Signal #2 Phase: ZB-MR2
 Signal #1 Info : 30Mx0.32mmx 0.50µ Signal #2 Info : 30M x 0.32mm x 0.25µm

Compound	RT#1	RT#2	Resp#1	Resp#2	ng/ml	ng/ml

System Monitoring Compounds						
1) SA Tetrachlo...	4.804	4.090	2803962	2507987	49.033	47.347
2) SA Decachlor...	10.686	9.435	1390406	1418685	46.363	45.745
Target Compounds						
8) L2 AR-1221-1	5.050	4.351	320919	287660	498.666	507.298
9) L2 AR-1221-2	5.147	4.451	235578	213458	507.009	512.027
10) L2 AR-1221-3	5.232	4.540	731555	678594	492.173	494.004

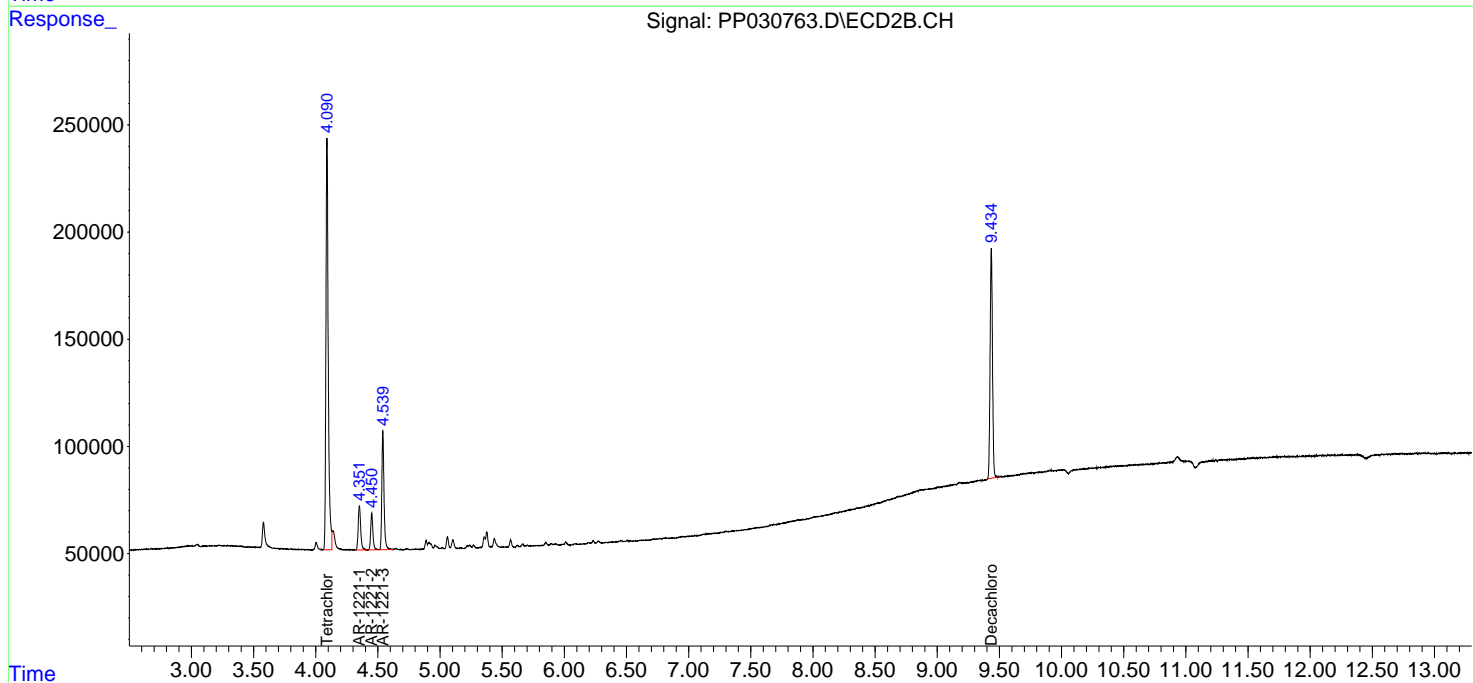
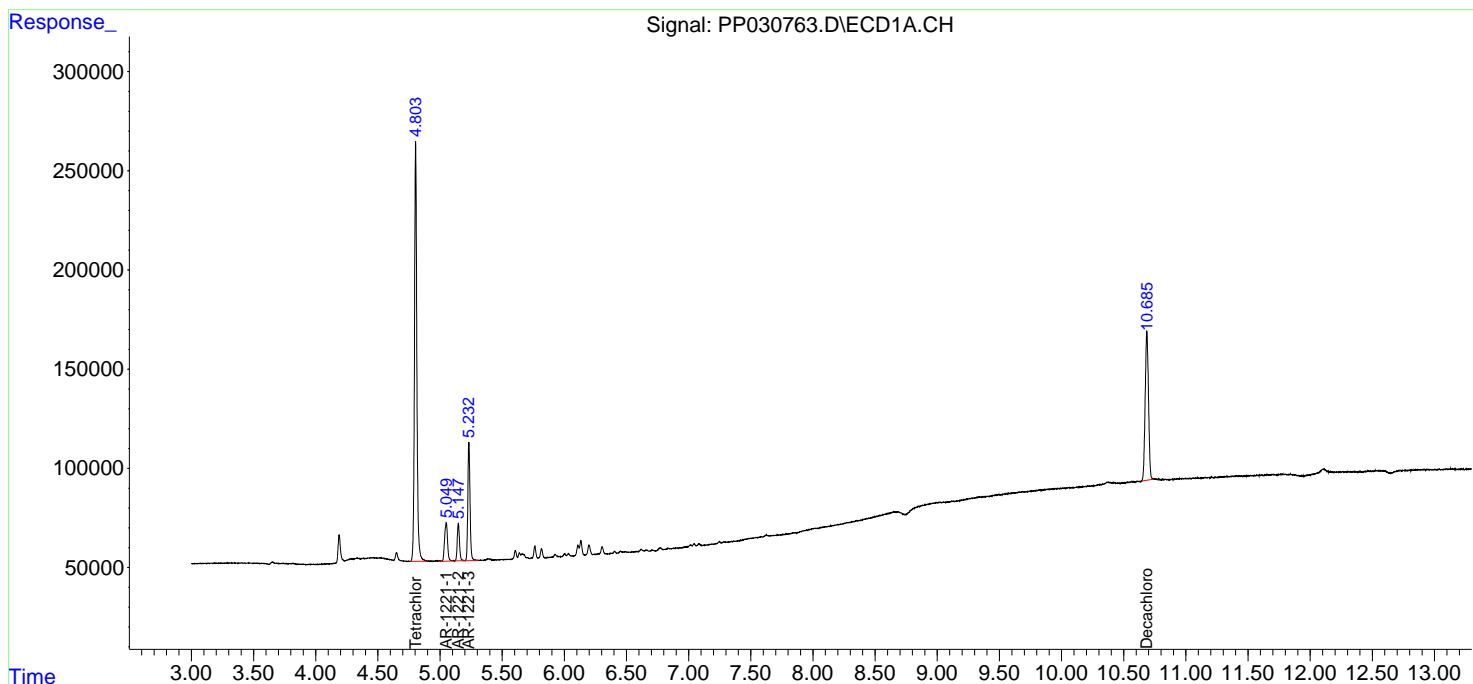
(f)=RT Delta > 1/2 Window (#)=Amounts differ by > 25% (m)=manual int.

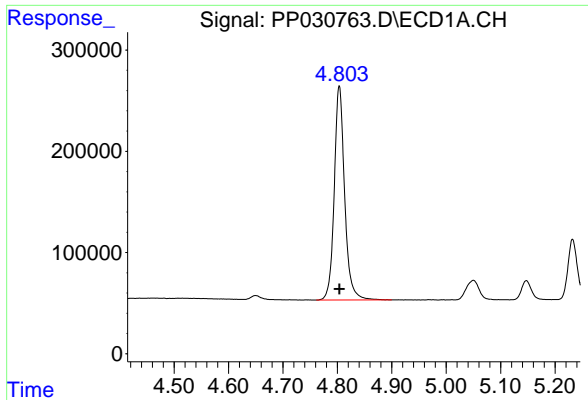
Data Path : Z:\pestpcbsrv\HPCHEM1\ECD_P\Data\PP102120\
 Data File : PP030763.D
 Signal(s) : Signal #1: ECD1A.CH Signal #2: ECD2B.CH
 Acq On : 21 Oct 2020 20:46
 Operator : DD\AJ
 Sample : AR1221PP1021ICV500
 Misc :
 ALS Vial : 14 Sample Multiplier: 1

Instrument :
 ECD_P
 ClientSampled :
 ICVPP102120

Integration File signal 1: autoint1.e
 Integration File signal 2: autoint2.e
 Quant Time: Oct 22 12:00:42 2020
 Quant Method : Z:\pestpcbsrv\HPCHEM1\ECD_O\methods\PP102120.M
 Quant Title : GC EXTRACTABLES
 QLast Update : Thu Oct 22 11:59:26 2020
 Response via : Initial Calibration
 Integrator: ChemStation 6890 Scale Mode: Small noise peaks clipped

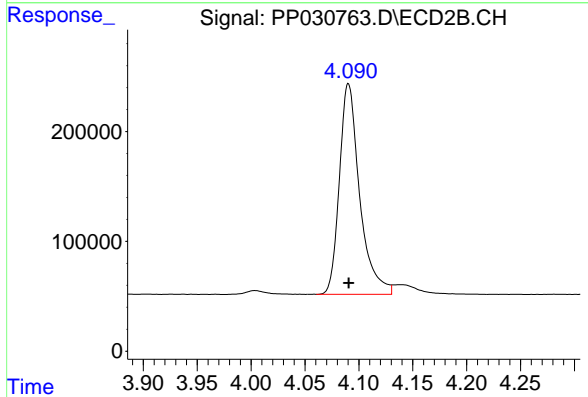
Volume Inj. : 2 µl
 Signal #1 Phase : ZB-MR1 Signal #2 Phase: ZB-MR2
 Signal #1 Info : 30Mx0.32mmx 0.50µ Signal #2 Info : 30M x 0.32mm x 0.25µm



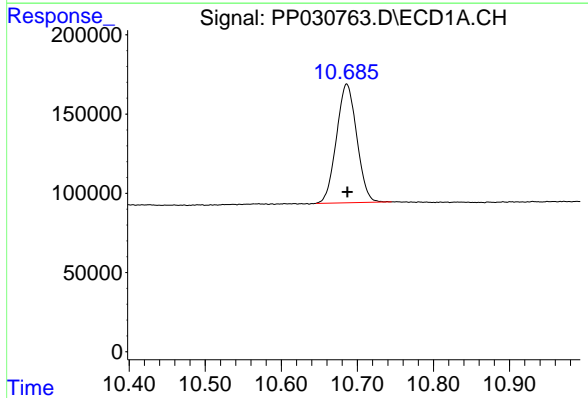


#1 Tetrachloro-m-xylene
 R.T.: 4.804 min
 Delta R.T.: 0.000 min
 Response: 2803962
 Conc: 49.03 ng/ml

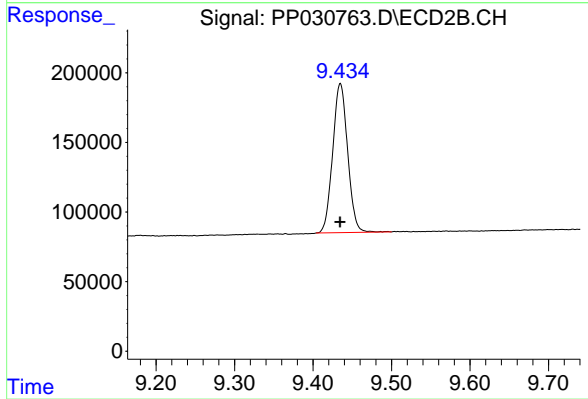
Instrument :
 ECD_P
 ClientSampleId :
 ICVPP102120



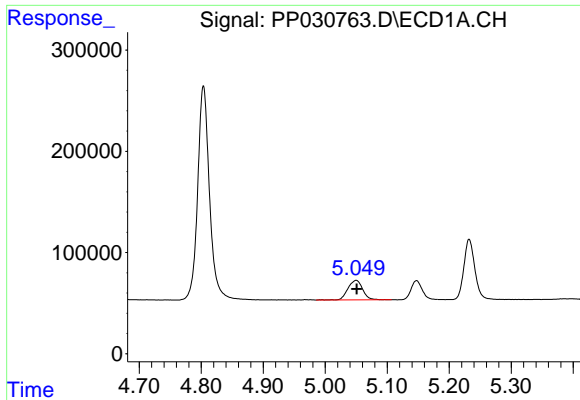
#1 Tetrachloro-m-xylene
 R.T.: 4.090 min
 Delta R.T.: 0.000 min
 Response: 2507987
 Conc: 47.35 ng/ml



#2 Decachlorobiphenyl
 R.T.: 10.686 min
 Delta R.T.: 0.000 min
 Response: 1390406
 Conc: 46.36 ng/ml

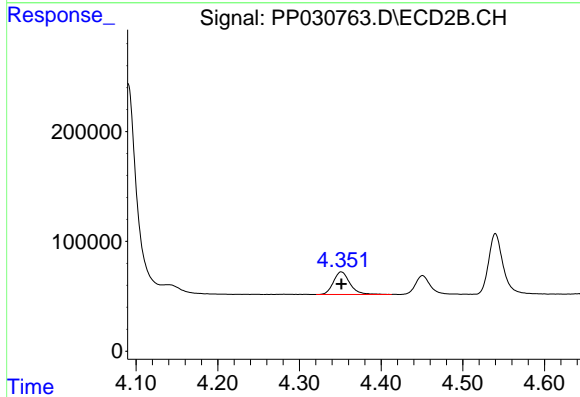


#2 Decachlorobiphenyl
 R.T.: 9.435 min
 Delta R.T.: 0.000 min
 Response: 1418685
 Conc: 45.74 ng/ml

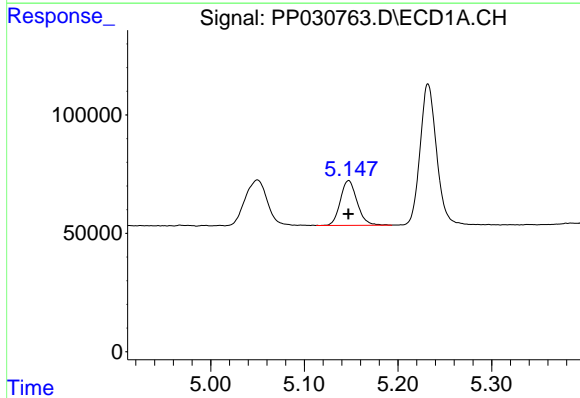


#8 AR-1221-1
 R.T.: 5.050 min
 Delta R.T.: 0.000 min
 Response: 320919
 Conc: 498.67 ng/ml

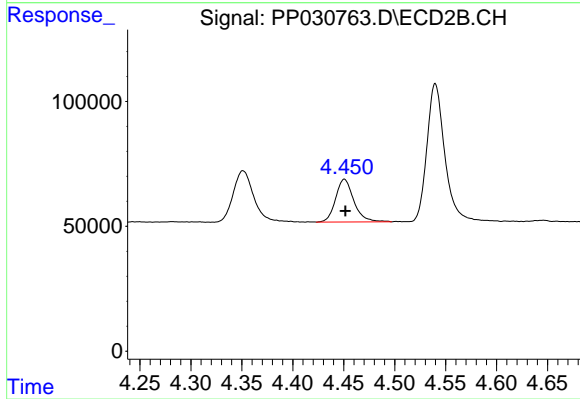
Instrument :
 ECD_P
 ClientSampleId :
 ICVPP102120



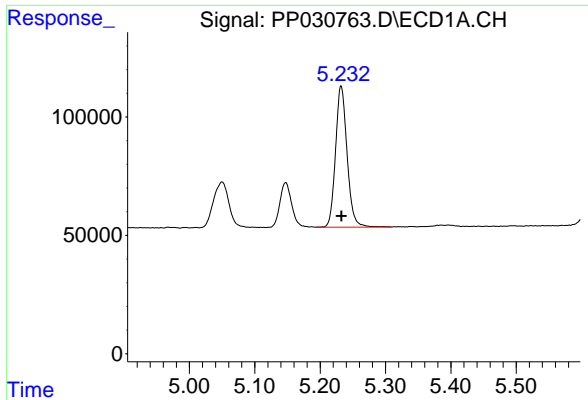
#8 AR-1221-1
 R.T.: 4.351 min
 Delta R.T.: 0.000 min
 Response: 287660
 Conc: 507.30 ng/ml



#9 AR-1221-2
 R.T.: 5.147 min
 Delta R.T.: 0.000 min
 Response: 235578
 Conc: 507.01 ng/ml



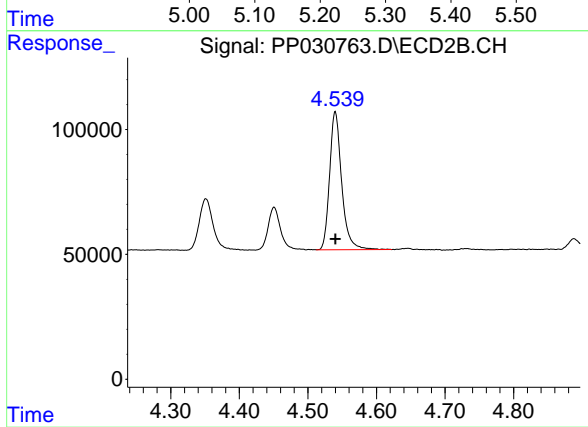
#9 AR-1221-2
 R.T.: 4.451 min
 Delta R.T.: -0.001 min
 Response: 213458
 Conc: 512.03 ng/ml



#10 AR-1221-3

R.T.: 5.232 min
Delta R.T.: 0.000 min
Response: 731555
Conc: 492.17 ng/ml

Instrument :
ECD_P
ClientSampled :
ICVPP102120



#10 AR-1221-3

R.T.: 4.540 min
Delta R.T.: 0.000 min
Response: 678594
Conc: 494.00 ng/ml