

Data Path : Z:\pestpcbsrv\HPCHEM1\ECD\_P\Data\PP102121\  
 Data File : PP040314.D  
 Signal(s) : Signal #1: ECD1A.CH Signal #2: ECD2B.CH  
 Acq On : 21 Oct 2021 10:36  
 Operator : AJ\MA  
 Sample : AR1660CCC500  
 Misc :  
 ALS Vial : 3 Sample Multiplier: 1

Instrument :  
 ECD\_P  
 ClientSampled :

Integration File signal 1: autoint1.e  
 Integration File signal 2: autoint2.e  
 Quant Time: Oct 21 16:37:18 2021  
 Quant Method : Z:\pestpcbsrv\HPCHEM1\ECD\_P\methods\PP102121.M  
 Quant Title : GC EXTRACTABLES  
 QLast Update : Wed Oct 13 08:03:59 2021  
 Response via : Initial Calibration  
 Integrator: ChemStation 6890 Scale Mode: Small noise peaks clipped

Volume Inj. : 2 µl  
 Signal #1 Phase : ZB-MR1 Signal #2 Phase: ZB-MR2  
 Signal #1 Info : 30Mx0.32mmx 0.50µ Signal #2 Info : 30M x 0.32mm x 0.25µm

Compound	RT#1	RT#2	Resp#1	Resp#2	ng/ml	ng/ml
System Monitoring Compounds						
1) SA Tetrachlo...	4.889	3.976	1580680	824566	52.050	48.774
2) SA Decachlor...	10.906	9.301	1285353	1088337	52.003	51.281
Target Compounds						
3) L1 AR-1016-1	6.213	5.239	530794	311573	537.561	477.434
4) L1 AR-1016-2	6.237	5.259	784413	445935	548.927	487.769
5) L1 AR-1016-3	6.303	5.453	489262	245680	561.422	485.611
6) L1 AR-1016-4	6.411	5.504	399477	199660	561.426	487.627
7) L1 AR-1016-5	6.726	5.735	379011	257755	592.578	514.828
8) L2 AR-1221-1	5.135	4.234	52998	31505	152.182	153.950
9) L2 AR-1221-2	5.240	4.336	60106	46818	269.781	278.335
10) L2 AR-1221-3	5.326	4.425	295517	180188	366.563	332.733
11) L3 AR-1232-1	5.326	4.425	295517	180188	474.919	443.639
12) L3 AR-1232-2	5.916	5.259	406719	445935	1185.013	1140.687
13) L3 AR-1232-3	6.237	5.453	784413	245680	1240.984	1186.081
14) L3 AR-1232-4	6.411	5.549	399477	249954	1273.712	1321.037
15) L3 AR-1232-5	6.508	5.735	309635	257755	1320.458	1248.446
16) L4 AR-1242-1	6.213	5.239	530794	311573	676.013	626.177
17) L4 AR-1242-2	6.237	5.259	784413	445935	691.543	652.908
18) L4 AR-1242-3	6.303	5.453	489262	245680	703.964	651.163
19) L4 AR-1242-4	6.411	5.549	399477	249954	693.305	674.774
20) L4 AR-1242-5	7.195	6.116	43168	200900	82.539	421.205 #
21) L5 AR-1248-1	6.213	5.239	530794	311573	860.423	799.158
22) L5 AR-1248-2	6.508	5.504	309635	199660	386.795	371.462
23) L5 AR-1248-3	6.726	5.549	379011	249954	422.696	442.170
24) L5 AR-1248-4	7.156	5.735	55229	257755	60.016	403.334 #
25) L5 AR-1248-5	7.195	6.159	43168	32760	48.800	52.514
26) L6 AR-1254-1	7.124	6.116	245199	200900	264.281	209.701
27) L6 AR-1254-2	7.353	6.275	248720	193995	179.662	219.800
28) L6 AR-1254-3	7.738	6.716	143055	352583	100.413	258.611 #
29) L6 AR-1254-4	8.033	6.938	87152	45649	82.360	53.221 #
30) L6 AR-1254-5	8.463	7.369	826705	698021	707.287	540.762
31) L7 AR-1260-1	7.904	6.835	573506	500719	525.001	499.899
32) L7 AR-1260-2	8.170	7.032	671351	599074	491.196	505.929
33) L7 AR-1260-3	8.536	7.189	474693	563878	520.925	477.254
34) L7 AR-1260-4	8.767	7.673	583095	456530	552.432	519.422
35) L7 AR-1260-5	9.092	7.922	1097543	1042321	529.995	510.016
36) L8 AR-1262-1	8.536	7.369	474693	698021	348.102	993.663 #
37) L8 AR-1262-2	9.092	7.922	1097543	1042321	442.580	463.168
38) L8 AR-1262-3	9.424f	8.209	744503	231204	647.339	237.403 #
39) L8 AR-1262-4	9.475f	8.272	450593	797370	551.464	449.777
40) L8 AR-1262-5	10.159	8.773	297292	264123	312.903	291.666
41) L9 AR-1268-1	9.424f	8.209	744503	231204	252.113	85.685 #

Data Path : Z:\pestpcbsrv\HPCHEM1\ECD\_P\Data\PP102121\  
 Data File : PP040314.D  
 Signal(s) : Signal #1: ECD1A.CH Signal #2: ECD2B.CH  
 Acq On : 21 Oct 2021 10:36  
 Operator : AJ\MA  
 Sample : AR1660CCC500  
 Misc :  
 ALS Vial : 3 Sample Multiplier: 1

Instrument :  
 ECD\_P  
 ClientSampleId :

Integration File signal 1: autoint1.e  
 Integration File signal 2: autoint2.e  
 Quant Time: Oct 21 16:37:18 2021  
 Quant Method : Z:\pestpcbsrv\HPCHEM1\ECD\_P\methods\PP102121.M  
 Quant Title : GC EXTRACTABLES  
 QLast Update : Wed Oct 13 08:03:59 2021  
 Response via : Initial Calibration  
 Integrator: ChemStation 6890 Scale Mode: Small noise peaks clipped

Volume Inj. : 2 µl  
 Signal #1 Phase : ZB-MR1 Signal #2 Phase: ZB-MR2  
 Signal #1 Info : 30Mx0.32mmx 0.50µ Signal #2 Info : 30M x 0.32mm x 0.25µm

	Compound	RT#1	RT#2	Resp#1	Resp#2	ng/ml	ng/ml
42)	L9 AR-1268-2	9.475f	8.272	450593	797370	159.595	318.474 #
43)	L9 AR-1268-3	0.000	8.483	0	13718	N.D.	6.265 #
44)	L9 AR-1268-4	10.159	8.773	297292	264123	288.460	266.352
45)	L9 AR-1268-5	10.573	9.055	116734	89328	13.572	12.530

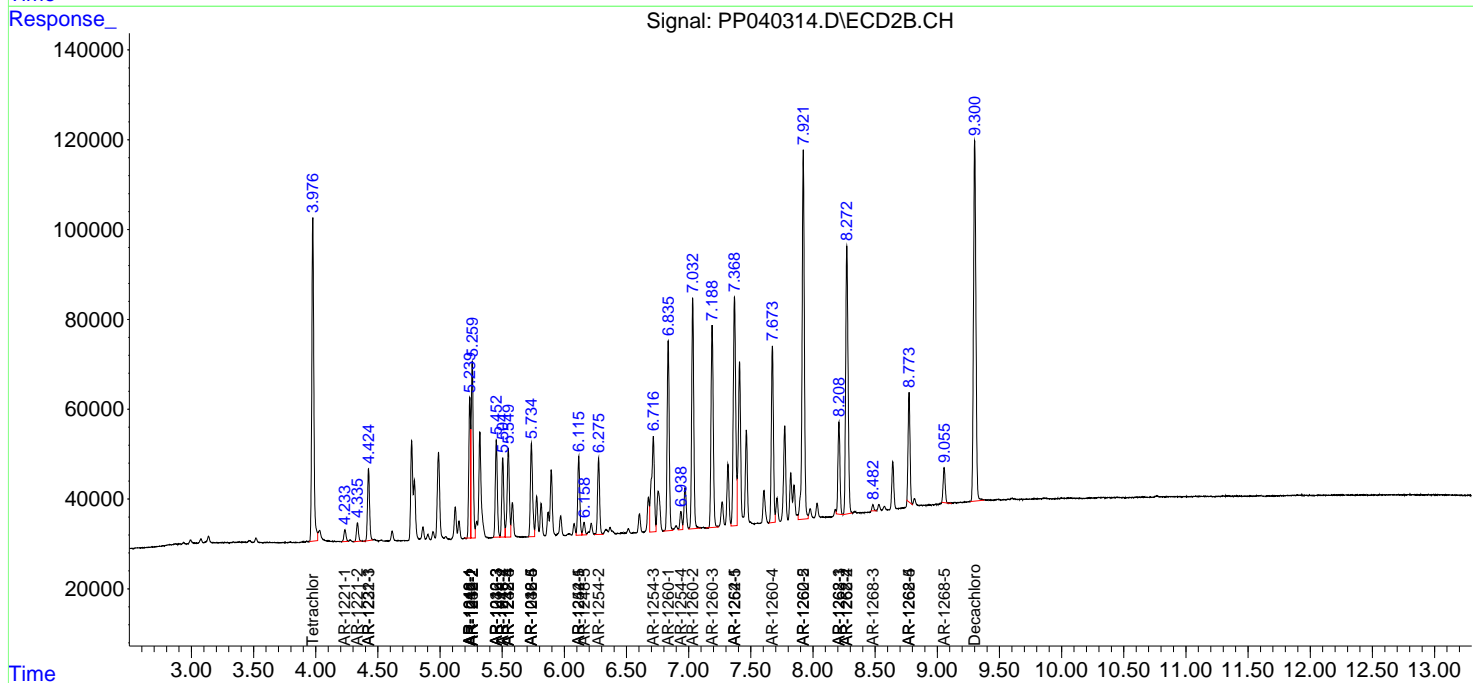
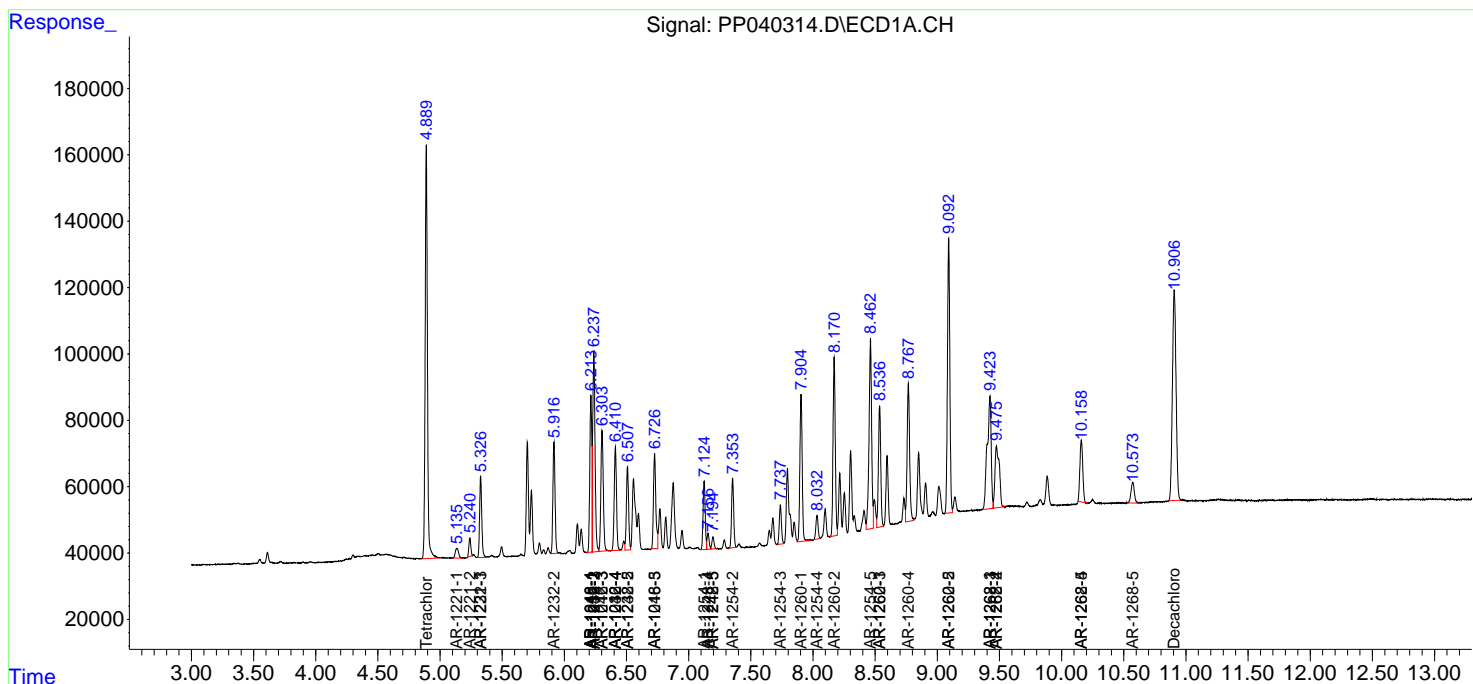
(f)=RT Delta > 1/2 Window (#)=Amounts differ by > 25% (m)=manual int.

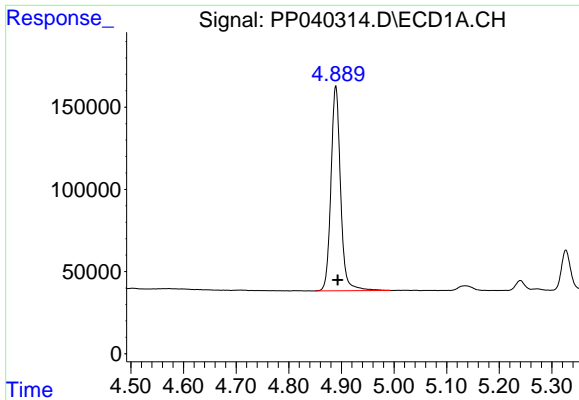
Data Path : Z:\pestpcbsrv\HPCHEM1\ECD\_P\Data\PP102121\  
 Data File : PP040314.D  
 Signal(s) : Signal #1: ECD1A.CH Signal #2: ECD2B.CH  
 Acq On : 21 Oct 2021 10:36  
 Operator : AJ\MA  
 Sample : AR1660CCC500  
 Misc :  
 ALS Vial : 3 Sample Multiplier: 1

Instrument :  
 ECD\_P  
 ClientSampled :

Integration File signal 1: autoint1.e  
 Integration File signal 2: autoint2.e  
 Quant Time: Oct 21 16:37:18 2021  
 Quant Method : Z:\pestpcbsrv\HPCHEM1\ECD\_P\methods\PP101221.M  
 Quant Title : GC EXTRACTABLES  
 QLast Update : Wed Oct 13 08:03:59 2021  
 Response via : Initial Calibration  
 Integrator: ChemStation 6890 Scale Mode: Small noise peaks clipped

Volume Inj. : 2 µl  
 Signal #1 Phase : ZB-MR1 Signal #2 Phase: ZB-MR2  
 Signal #1 Info : 30Mx0.32mmx 0.50µ Signal #2 Info : 30M x 0.32mm x 0.25µm

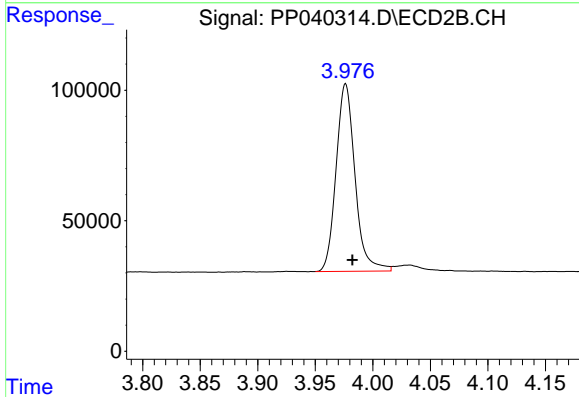




#1 Tetrachloro-m-xylene

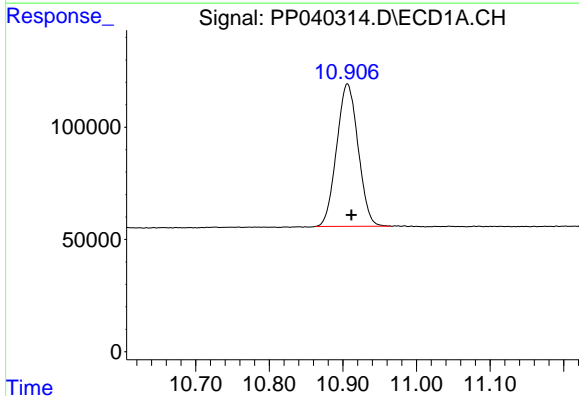
R.T.: 4.889 min  
Delta R.T.: -0.004 min  
Response: 1580680  
Conc: 52.05 ng/ml

Instrument :  
ECD\_P  
ClientSampleId :



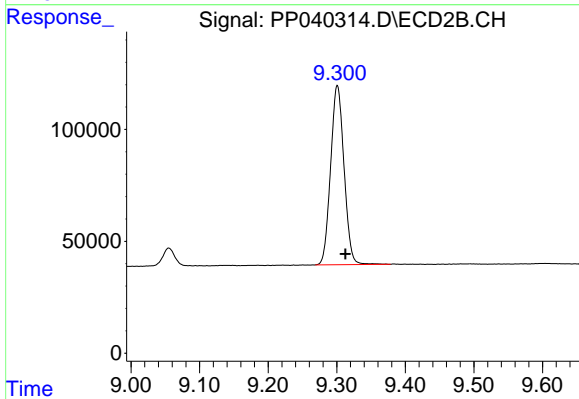
#1 Tetrachloro-m-xylene

R.T.: 3.976 min  
Delta R.T.: -0.006 min  
Response: 824566  
Conc: 48.77 ng/ml



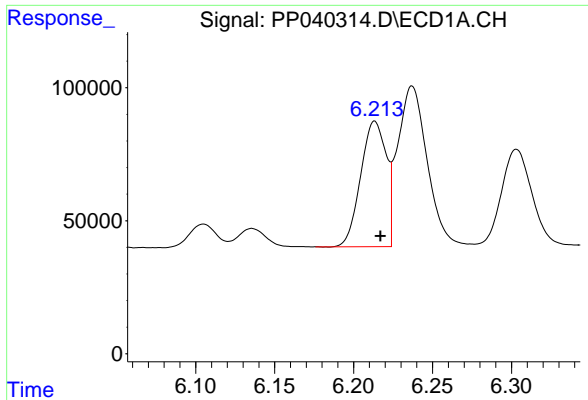
#2 Decachlorobiphenyl

R.T.: 10.906 min  
Delta R.T.: -0.005 min  
Response: 1285353  
Conc: 52.00 ng/ml



#2 Decachlorobiphenyl

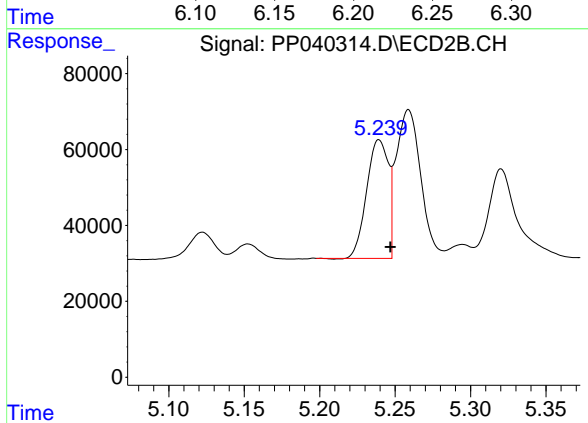
R.T.: 9.301 min  
Delta R.T.: -0.012 min  
Response: 1088337  
Conc: 51.28 ng/ml



#3 AR-1016-1

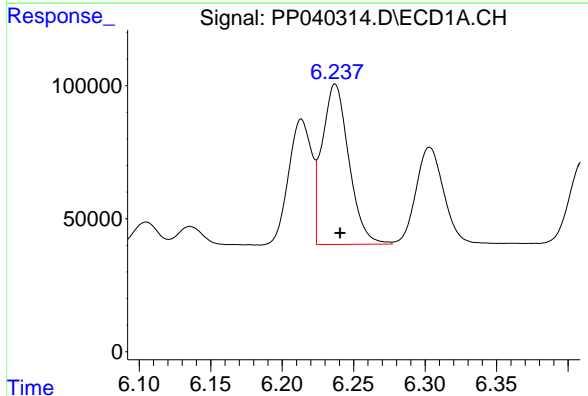
R.T.: 6.213 min  
 Delta R.T.: -0.004 min  
 Response: 530794  
 Conc: 537.56 ng/ml

Instrument :  
 ECD\_P  
 ClientSampleId :



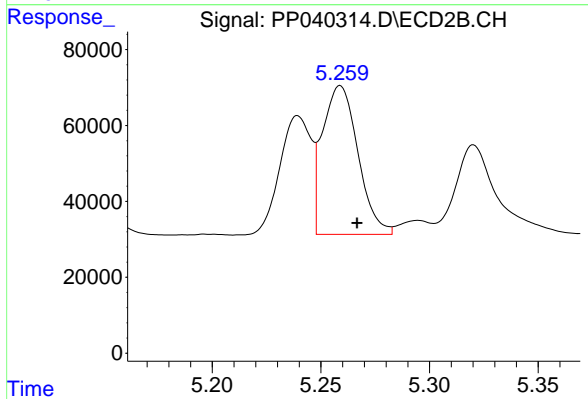
#3 AR-1016-1

R.T.: 5.239 min  
 Delta R.T.: -0.008 min  
 Response: 311573  
 Conc: 477.43 ng/ml



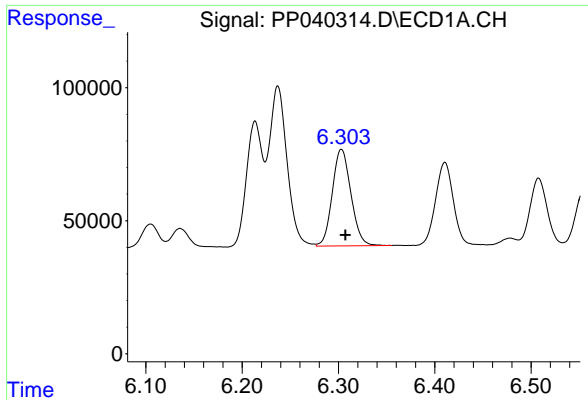
#4 AR-1016-2

R.T.: 6.237 min  
 Delta R.T.: -0.003 min  
 Response: 784413  
 Conc: 548.93 ng/ml



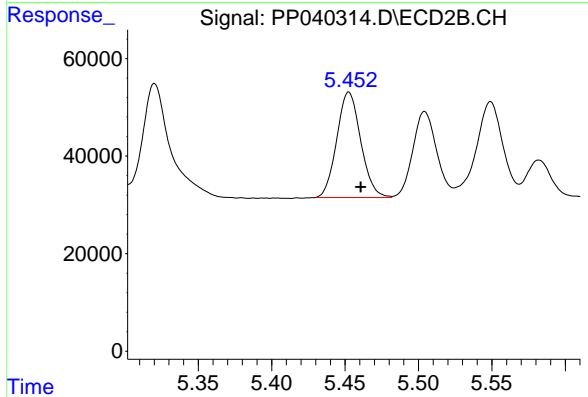
#4 AR-1016-2

R.T.: 5.259 min  
 Delta R.T.: -0.008 min  
 Response: 445935  
 Conc: 487.77 ng/ml

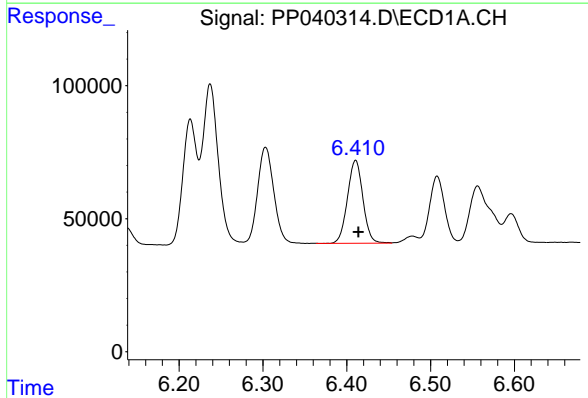


#5 AR-1016-3  
 R.T.: 6.303 min  
 Delta R.T.: -0.004 min  
 Response: 489262  
 Conc: 561.42 ng/ml

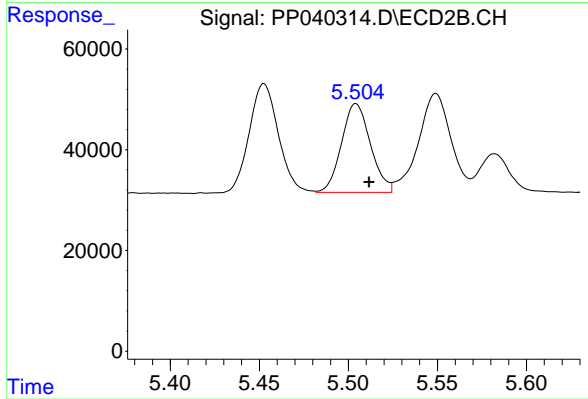
Instrument :  
 ECD\_P  
 ClientSampleId :



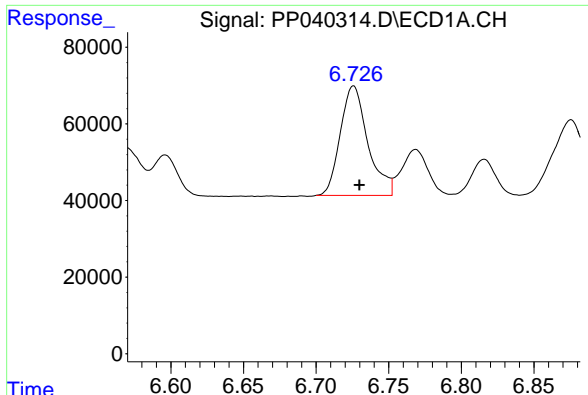
#5 AR-1016-3  
 R.T.: 5.453 min  
 Delta R.T.: -0.008 min  
 Response: 245680  
 Conc: 485.61 ng/ml



#6 AR-1016-4  
 R.T.: 6.411 min  
 Delta R.T.: -0.003 min  
 Response: 399477  
 Conc: 561.43 ng/ml



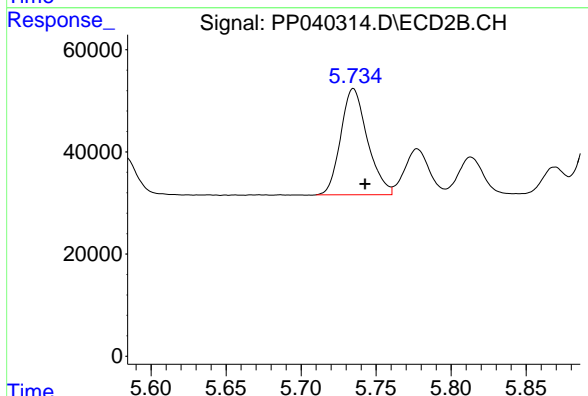
#6 AR-1016-4  
 R.T.: 5.504 min  
 Delta R.T.: -0.007 min  
 Response: 199660  
 Conc: 487.63 ng/ml



#7 AR-1016-5

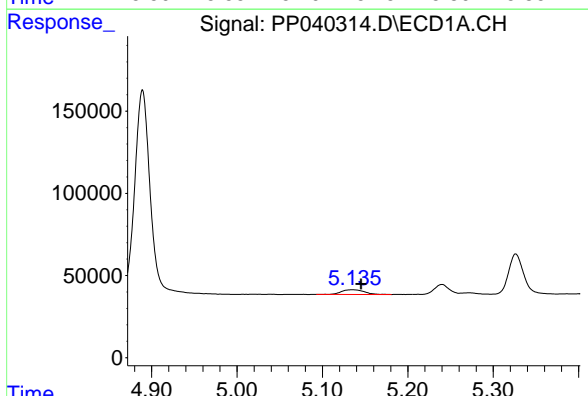
R.T.: 6.726 min  
 Delta R.T.: -0.004 min  
 Response: 379011  
 Conc: 592.58 ng/ml

Instrument :  
 ECD\_P  
 ClientSampled :



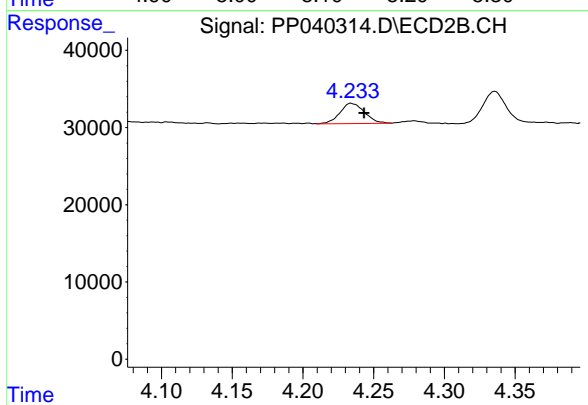
#7 AR-1016-5

R.T.: 5.735 min  
 Delta R.T.: -0.008 min  
 Response: 257755  
 Conc: 514.83 ng/ml



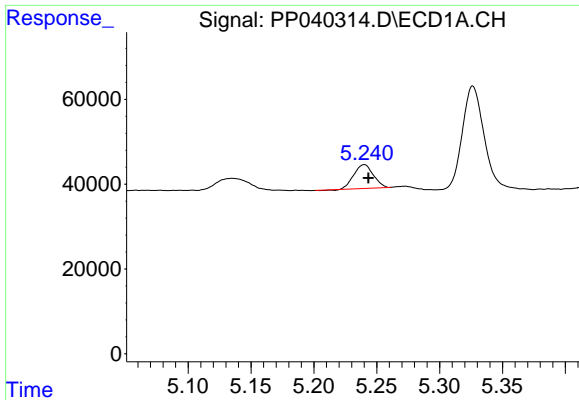
#8 AR-1221-1

R.T.: 5.135 min  
 Delta R.T.: -0.010 min  
 Response: 52998  
 Conc: 152.18 ng/ml



#8 AR-1221-1

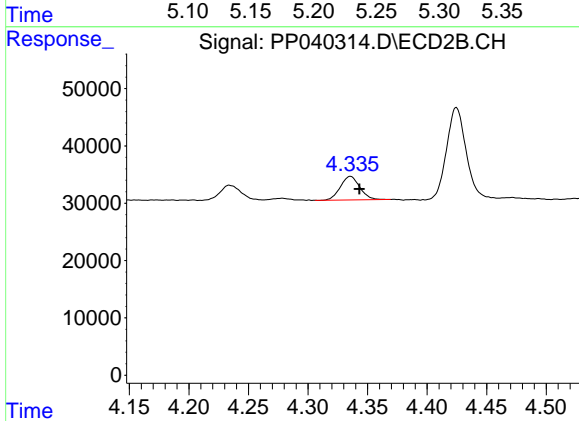
R.T.: 4.234 min  
 Delta R.T.: -0.009 min  
 Response: 31505  
 Conc: 153.95 ng/ml



#9 AR-1221-2

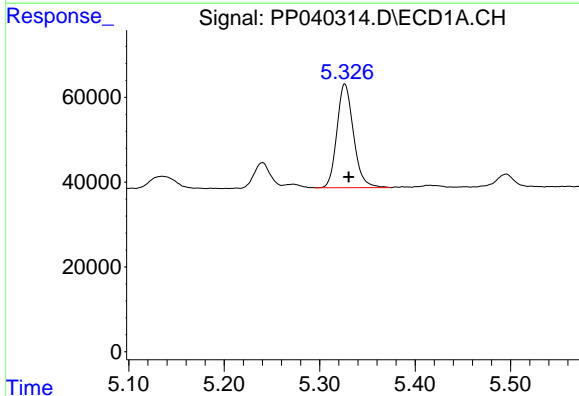
R.T.: 5.240 min  
 Delta R.T.: -0.003 min  
 Response: 60106  
 Conc: 269.78 ng/ml

Instrument :  
 ECD\_P  
 ClientSampleId :



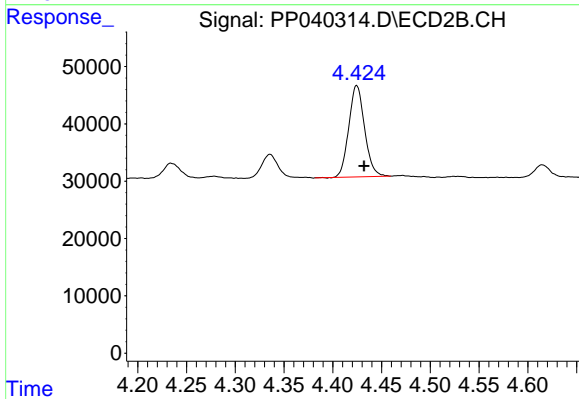
#9 AR-1221-2

R.T.: 4.336 min  
 Delta R.T.: -0.008 min  
 Response: 46818  
 Conc: 278.33 ng/ml



#10 AR-1221-3

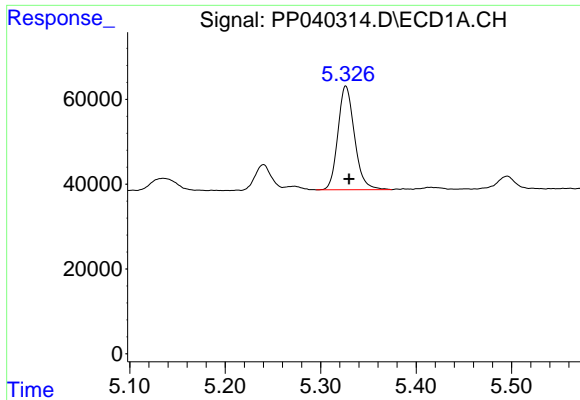
R.T.: 5.326 min  
 Delta R.T.: -0.004 min  
 Response: 295517  
 Conc: 366.56 ng/ml



#10 AR-1221-3

R.T.: 4.425 min  
 Delta R.T.: -0.008 min  
 Response: 180188  
 Conc: 332.73 ng/ml

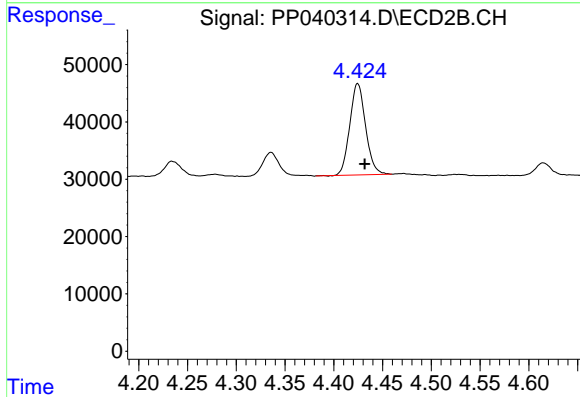




#11 AR-1232-1

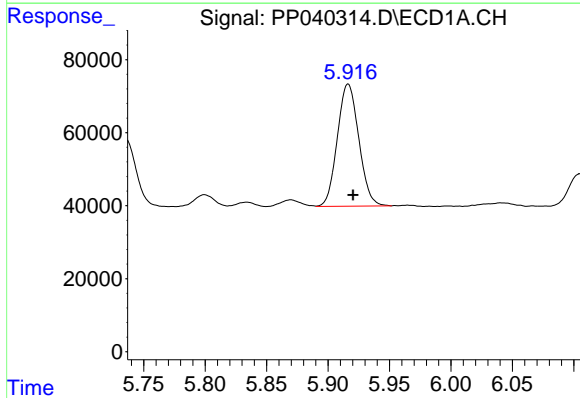
R.T.: 5.326 min  
 Delta R.T.: -0.003 min  
 Response: 295517  
 Conc: 474.92 ng/ml

Instrument :  
 ECD\_P  
 ClientSampleId :



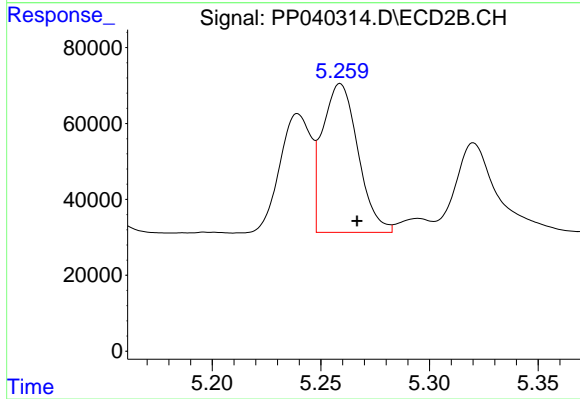
#11 AR-1232-1

R.T.: 4.425 min  
 Delta R.T.: -0.007 min  
 Response: 180188  
 Conc: 443.64 ng/ml



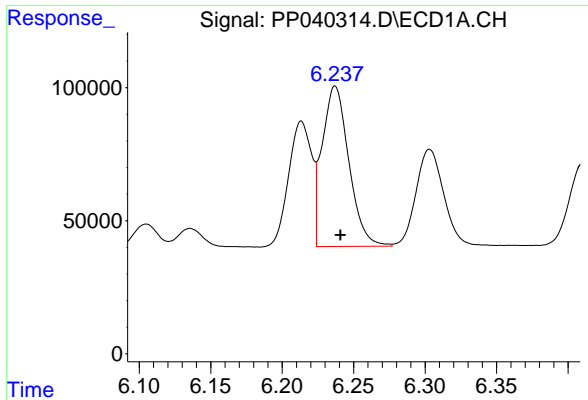
#12 AR-1232-2

R.T.: 5.916 min  
 Delta R.T.: -0.004 min  
 Response: 406719  
 Conc: 1185.01 ng/ml



#12 AR-1232-2

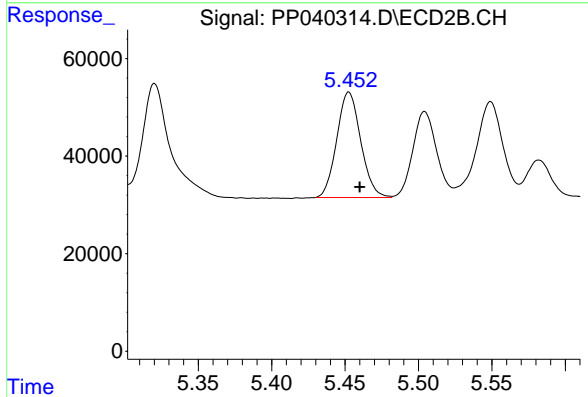
R.T.: 5.259 min  
 Delta R.T.: -0.008 min  
 Response: 445935  
 Conc: 1140.69 ng/ml



#13 AR-1232-3

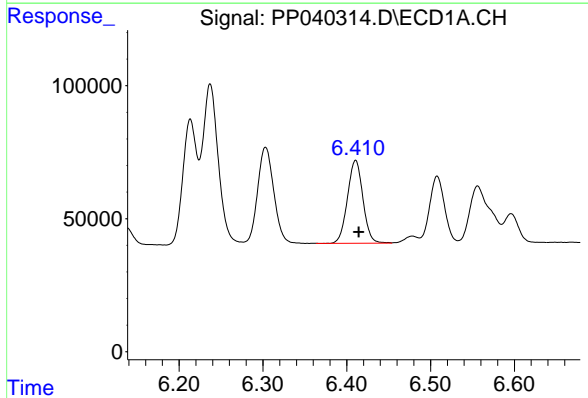
R.T.: 6.237 min  
 Delta R.T.: -0.004 min  
 Response: 784413  
 Conc: 1240.98 ng/ml

Instrument :  
 ECD\_P  
 ClientSampleId :



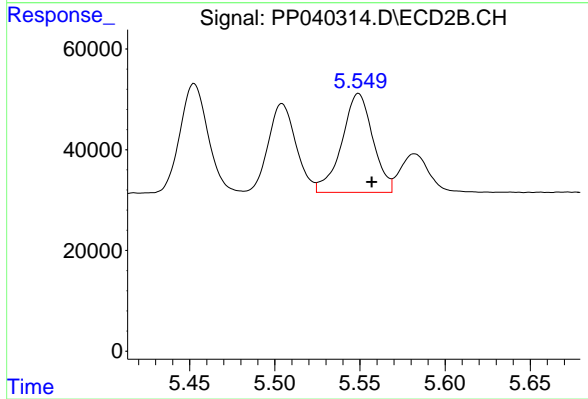
#13 AR-1232-3

R.T.: 5.453 min  
 Delta R.T.: -0.007 min  
 Response: 245680  
 Conc: 1186.08 ng/ml



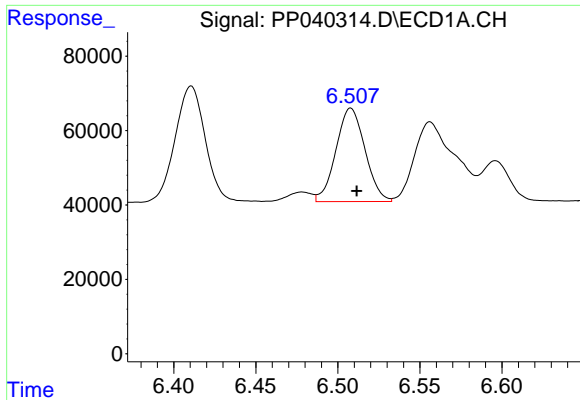
#14 AR-1232-4

R.T.: 6.411 min  
 Delta R.T.: -0.004 min  
 Response: 399477  
 Conc: 1273.71 ng/ml



#14 AR-1232-4

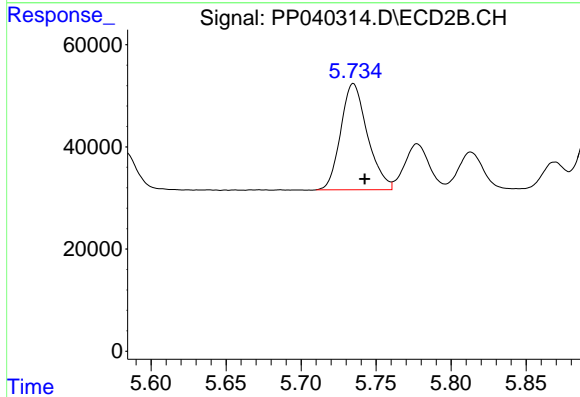
R.T.: 5.549 min  
 Delta R.T.: -0.008 min  
 Response: 249954  
 Conc: 1321.04 ng/ml



#15 AR-1232-5

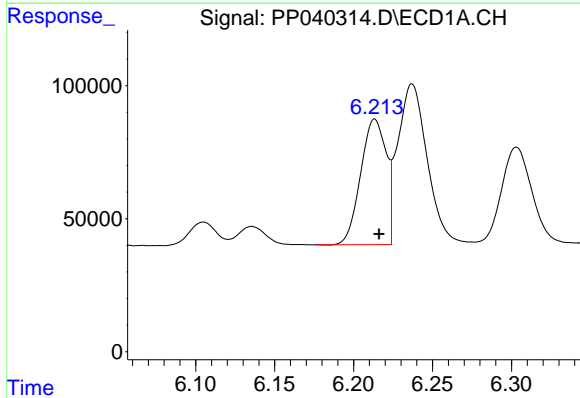
R.T.: 6.508 min  
 Delta R.T.: -0.004 min  
 Response: 309635  
 Conc: 1320.46 ng/ml

Instrument :  
 ECD\_P  
 ClientSampleId :



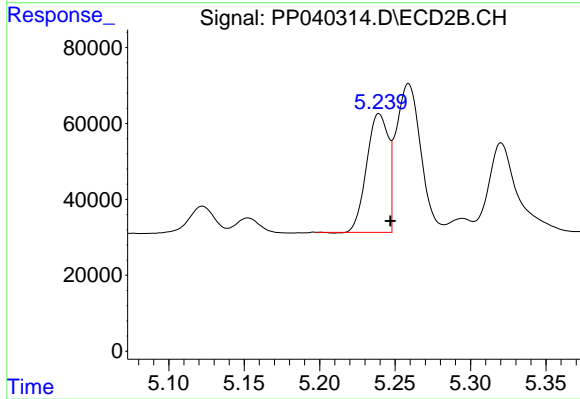
#15 AR-1232-5

R.T.: 5.735 min  
 Delta R.T.: -0.008 min  
 Response: 257755  
 Conc: 1248.45 ng/ml



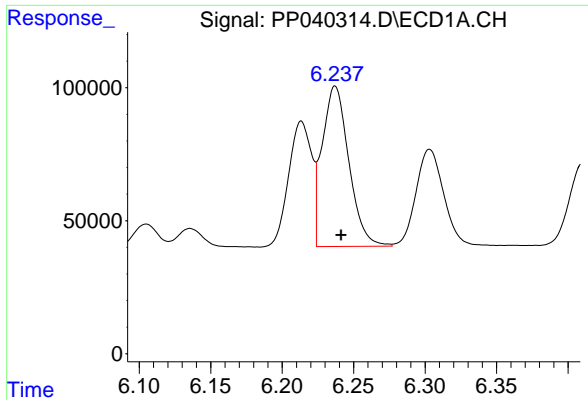
#16 AR-1242-1

R.T.: 6.213 min  
 Delta R.T.: -0.003 min  
 Response: 530794  
 Conc: 676.01 ng/ml



#16 AR-1242-1

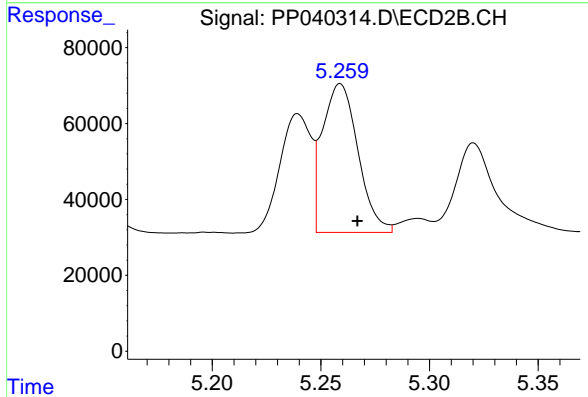
R.T.: 5.239 min  
 Delta R.T.: -0.008 min  
 Response: 311573  
 Conc: 626.18 ng/ml



#17 AR-1242-2

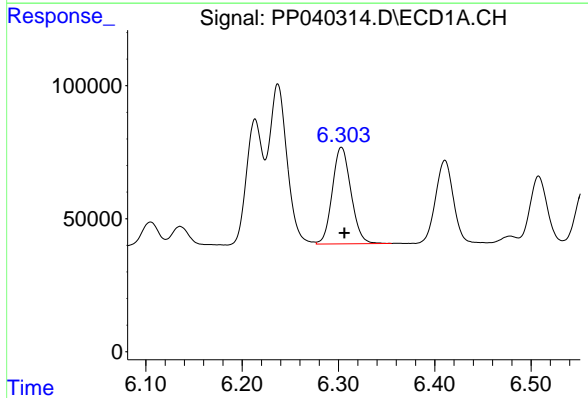
R.T.: 6.237 min  
 Delta R.T.: -0.004 min  
 Response: 784413  
 Conc: 691.54 ng/ml

Instrument :  
 ECD\_P  
 ClientSampled :



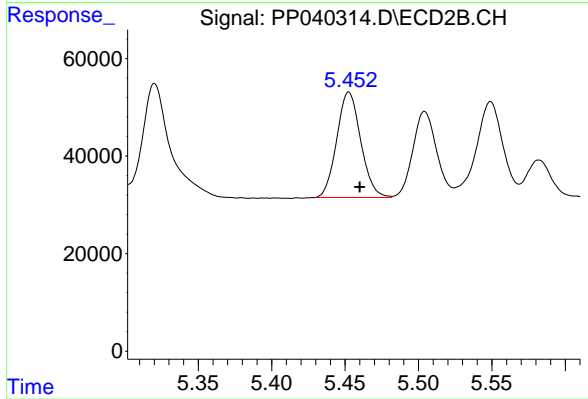
#17 AR-1242-2

R.T.: 5.259 min  
 Delta R.T.: -0.008 min  
 Response: 445935  
 Conc: 652.91 ng/ml



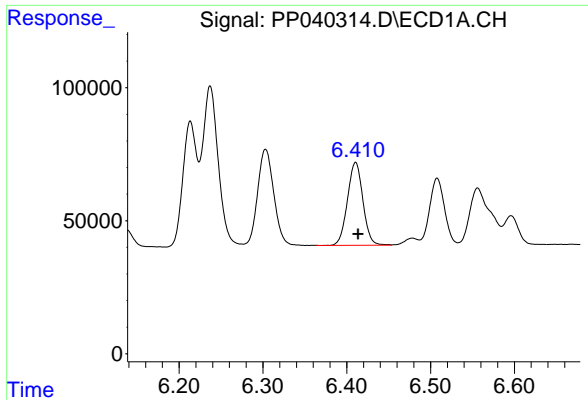
#18 AR-1242-3

R.T.: 6.303 min  
 Delta R.T.: -0.003 min  
 Response: 489262  
 Conc: 703.96 ng/ml



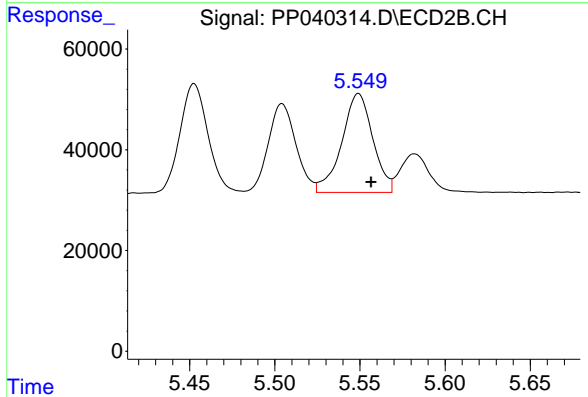
#18 AR-1242-3

R.T.: 5.453 min  
 Delta R.T.: -0.007 min  
 Response: 245680  
 Conc: 651.16 ng/ml

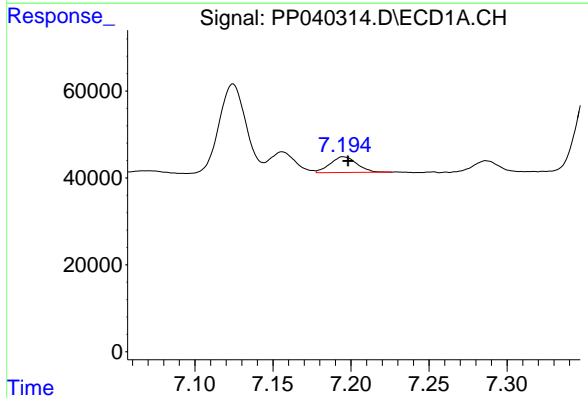


#19 AR-1242-4  
 R.T.: 6.411 min  
 Delta R.T.: -0.003 min  
 Response: 399477  
 Conc: 693.31 ng/ml

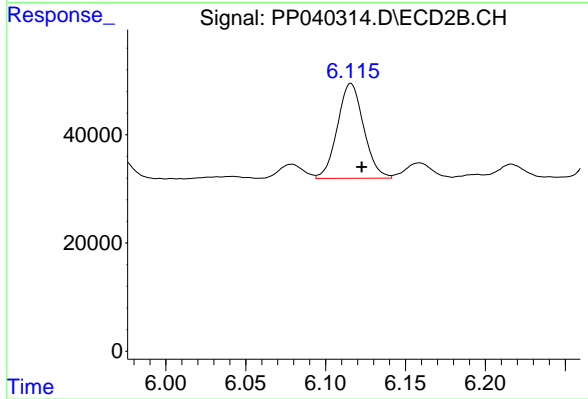
Instrument :  
 ECD\_P  
 ClientSampleId :



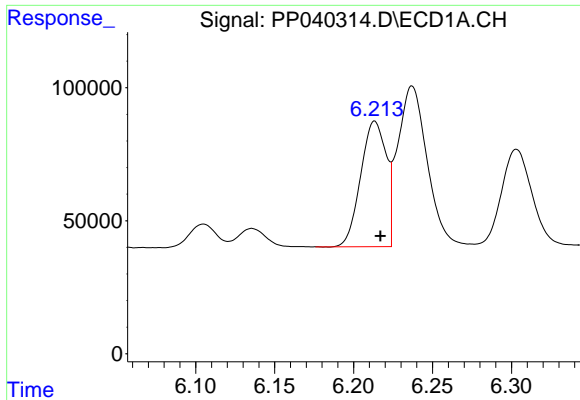
#19 AR-1242-4  
 R.T.: 5.549 min  
 Delta R.T.: -0.007 min  
 Response: 249954  
 Conc: 674.77 ng/ml



#20 AR-1242-5  
 R.T.: 7.195 min  
 Delta R.T.: -0.003 min  
 Response: 43168  
 Conc: 82.54 ng/ml



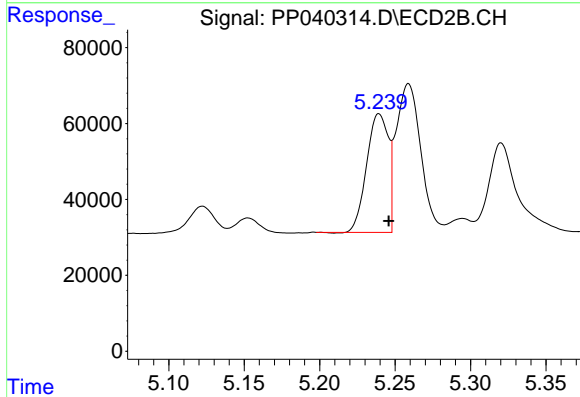
#20 AR-1242-5  
 R.T.: 6.116 min  
 Delta R.T.: -0.007 min  
 Response: 200900  
 Conc: 421.20 ng/ml



#21 AR-1248-1

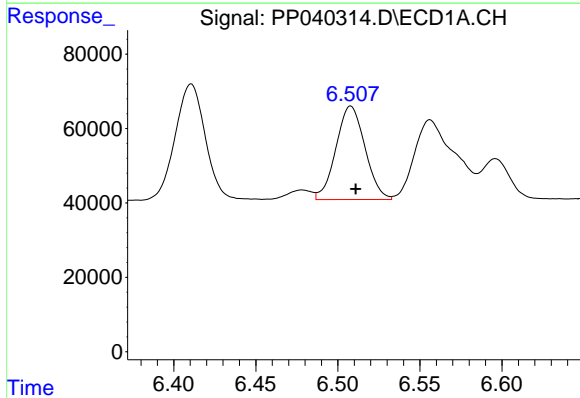
R.T.: 6.213 min  
 Delta R.T.: -0.004 min  
 Response: 530794  
 Conc: 860.42 ng/ml

Instrument :  
 ECD\_P  
 ClientSampleId :



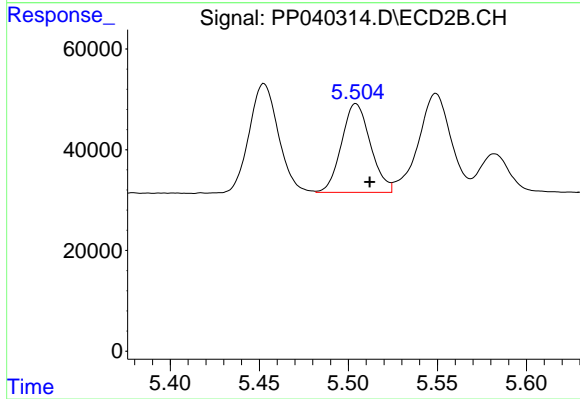
#21 AR-1248-1

R.T.: 5.239 min  
 Delta R.T.: -0.006 min  
 Response: 311573  
 Conc: 799.16 ng/ml



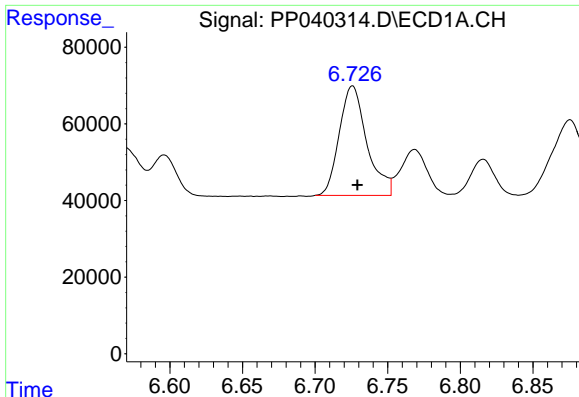
#22 AR-1248-2

R.T.: 6.508 min  
 Delta R.T.: -0.003 min  
 Response: 309635  
 Conc: 386.79 ng/ml



#22 AR-1248-2

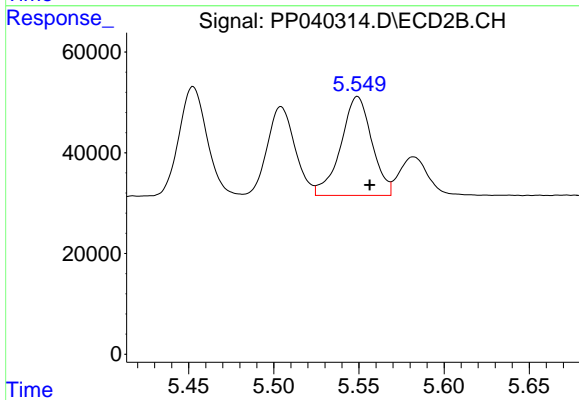
R.T.: 5.504 min  
 Delta R.T.: -0.008 min  
 Response: 199660  
 Conc: 371.46 ng/ml



#23 AR-1248-3

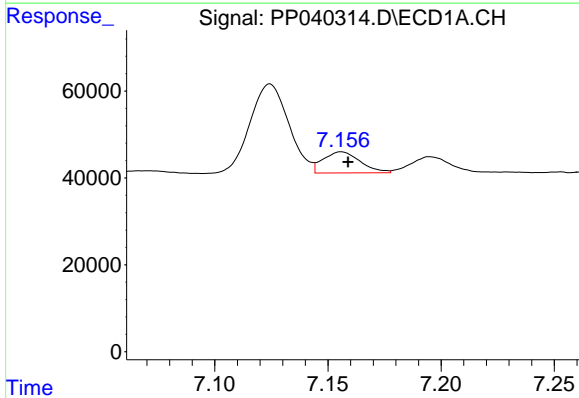
R.T.: 6.726 min  
 Delta R.T.: -0.003 min  
 Response: 379011  
 Conc: 422.70 ng/ml

Instrument :  
 ECD\_P  
 ClientSampled :



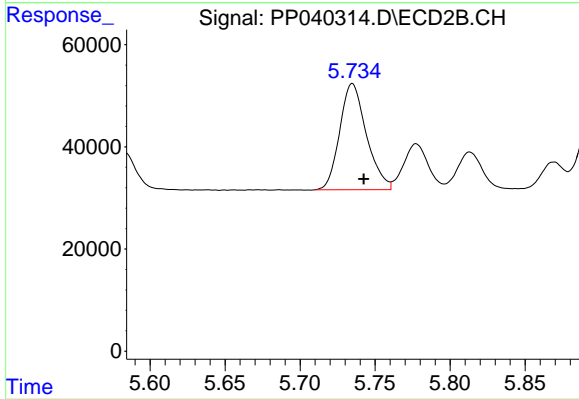
#23 AR-1248-3

R.T.: 5.549 min  
 Delta R.T.: -0.007 min  
 Response: 249954  
 Conc: 442.17 ng/ml



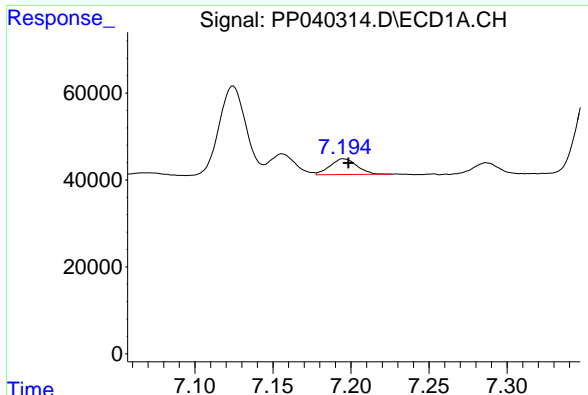
#24 AR-1248-4

R.T.: 7.156 min  
 Delta R.T.: -0.003 min  
 Response: 55229  
 Conc: 60.02 ng/ml



#24 AR-1248-4

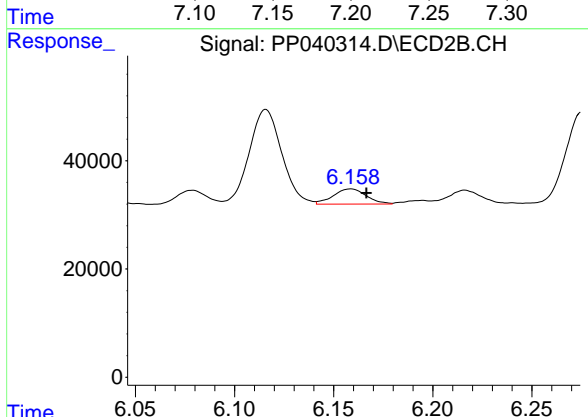
R.T.: 5.735 min  
 Delta R.T.: -0.008 min  
 Response: 257755  
 Conc: 403.33 ng/ml



#25 AR-1248-5

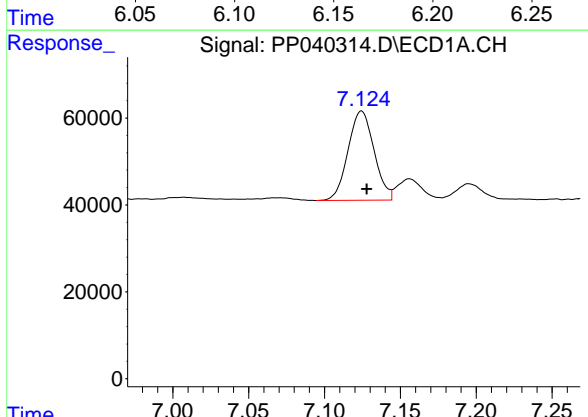
R.T.: 7.195 min  
 Delta R.T.: -0.003 min  
 Response: 43168  
 Conc: 48.80 ng/ml

Instrument :  
 ECD\_P  
 ClientSampled :



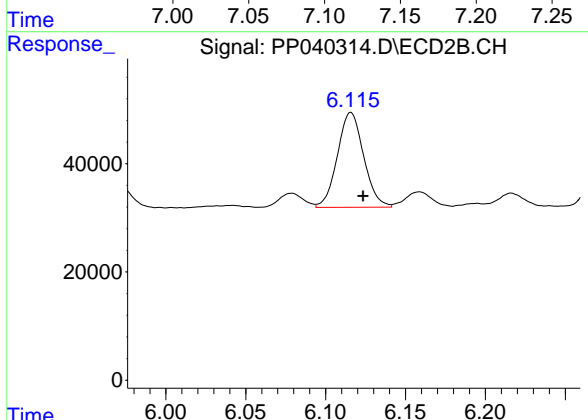
#25 AR-1248-5

R.T.: 6.159 min  
 Delta R.T.: -0.008 min  
 Response: 32760  
 Conc: 52.51 ng/ml



#26 AR-1254-1

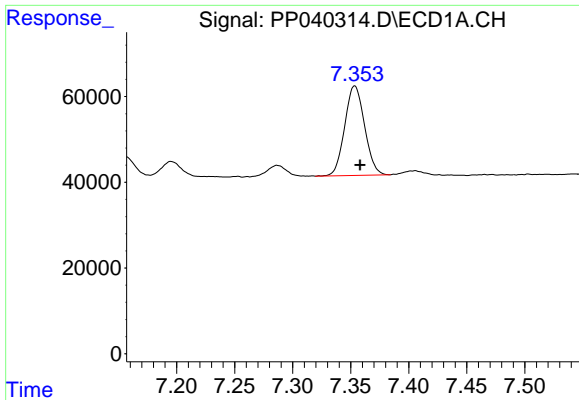
R.T.: 7.124 min  
 Delta R.T.: -0.003 min  
 Response: 245199  
 Conc: 264.28 ng/ml



#26 AR-1254-1

R.T.: 6.116 min  
 Delta R.T.: -0.008 min  
 Response: 200900  
 Conc: 209.70 ng/ml

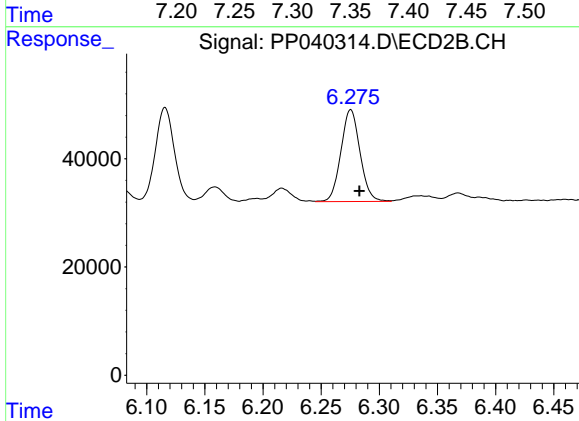




#27 AR-1254-2

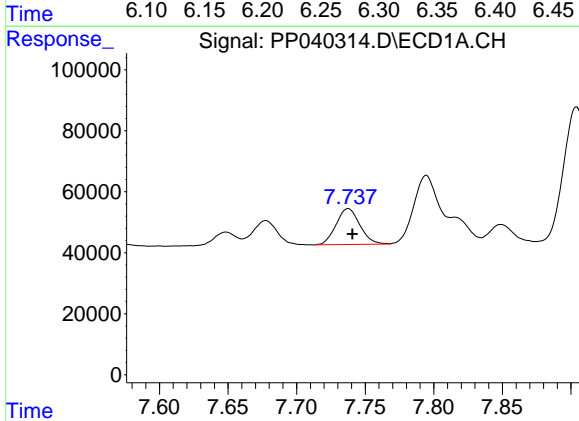
R.T.: 7.353 min  
 Delta R.T.: -0.004 min  
 Response: 248720  
 Conc: 179.66 ng/ml

Instrument :  
 ECD\_P  
 ClientSampleId :



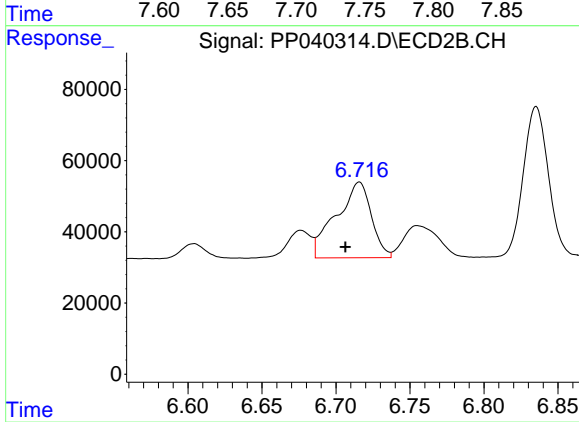
#27 AR-1254-2

R.T.: 6.275 min  
 Delta R.T.: -0.007 min  
 Response: 193995  
 Conc: 219.80 ng/ml



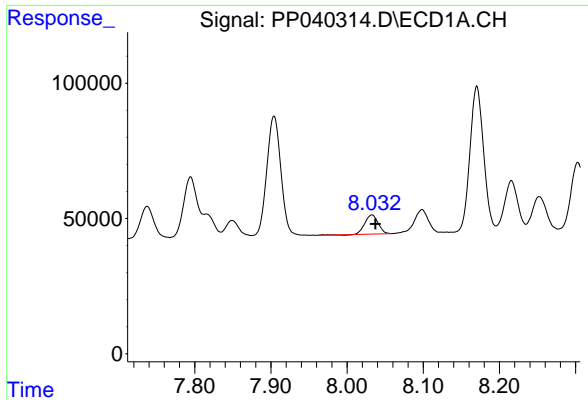
#28 AR-1254-3

R.T.: 7.738 min  
 Delta R.T.: -0.003 min  
 Response: 143055  
 Conc: 100.41 ng/ml



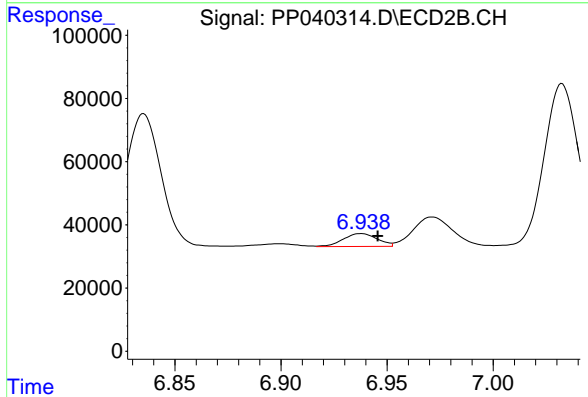
#28 AR-1254-3

R.T.: 6.716 min  
 Delta R.T.: 0.009 min  
 Response: 352583  
 Conc: 258.61 ng/ml

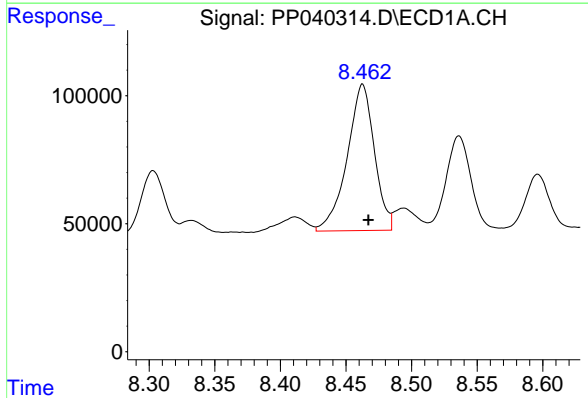


#29 AR-1254-4  
 R.T.: 8.033 min  
 Delta R.T.: -0.005 min  
 Response: 87152  
 Conc: 82.36 ng/ml

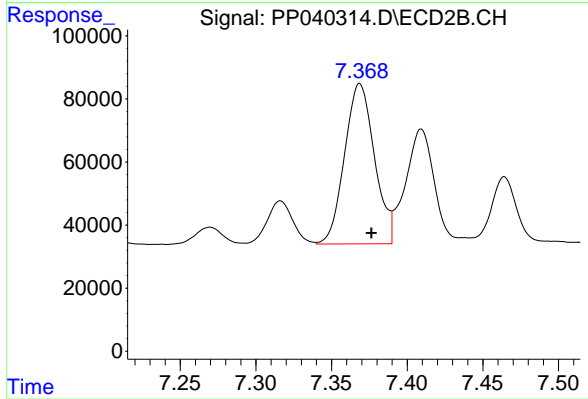
Instrument :  
 ECD\_P  
 ClientSampleId :



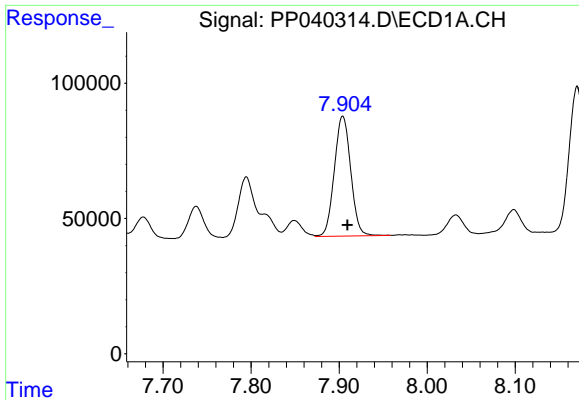
#29 AR-1254-4  
 R.T.: 6.938 min  
 Delta R.T.: -0.008 min  
 Response: 45649  
 Conc: 53.22 ng/ml



#30 AR-1254-5  
 R.T.: 8.463 min  
 Delta R.T.: -0.004 min  
 Response: 826705  
 Conc: 707.29 ng/ml

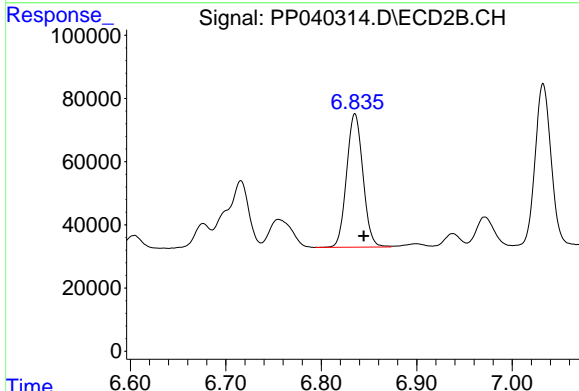


#30 AR-1254-5  
 R.T.: 7.369 min  
 Delta R.T.: -0.008 min  
 Response: 698021  
 Conc: 540.76 ng/ml

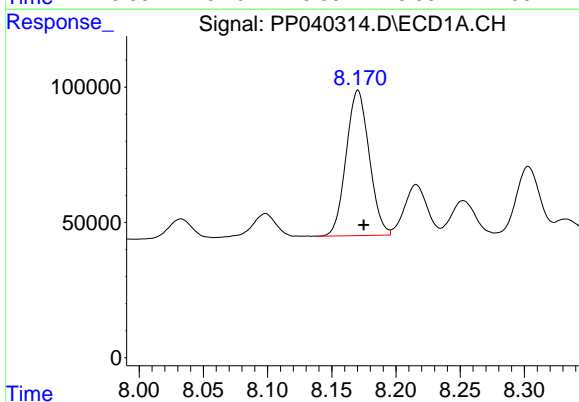


#31 AR-1260-1  
 R.T.: 7.904 min  
 Delta R.T.: -0.005 min  
 Response: 573506  
 Conc: 525.00 ng/ml

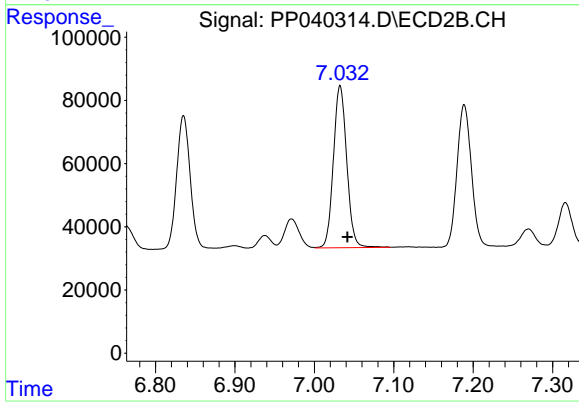
Instrument :  
 ECD\_P  
 ClientSampled :



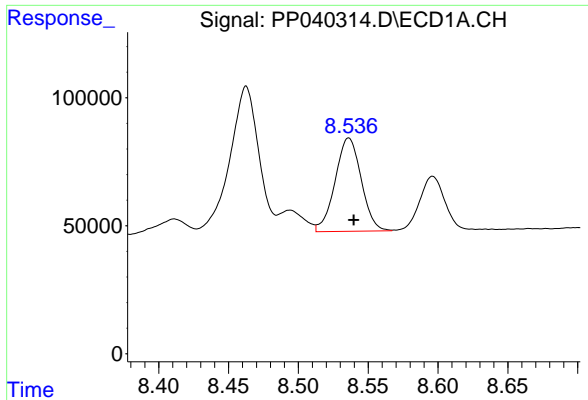
#31 AR-1260-1  
 R.T.: 6.835 min  
 Delta R.T.: -0.009 min  
 Response: 500719  
 Conc: 499.90 ng/ml



#32 AR-1260-2  
 R.T.: 8.170 min  
 Delta R.T.: -0.005 min  
 Response: 671351  
 Conc: 491.20 ng/ml



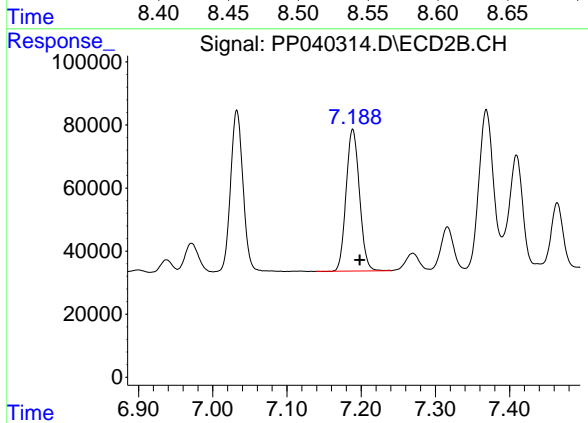
#32 AR-1260-2  
 R.T.: 7.032 min  
 Delta R.T.: -0.009 min  
 Response: 599074  
 Conc: 505.93 ng/ml



#33 AR-1260-3

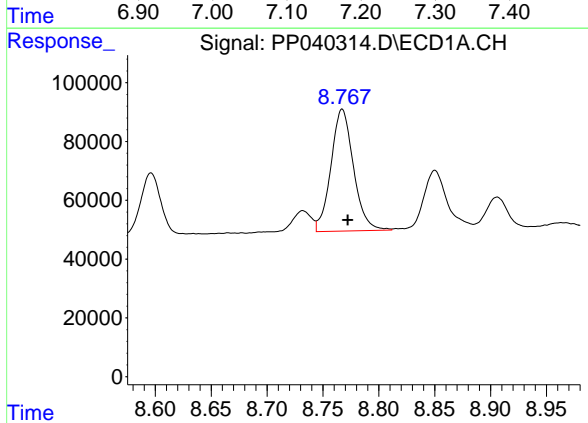
R.T.: 8.536 min  
 Delta R.T.: -0.004 min  
 Response: 474693  
 Conc: 520.93 ng/ml

Instrument :  
 ECD\_P  
 ClientSampled :



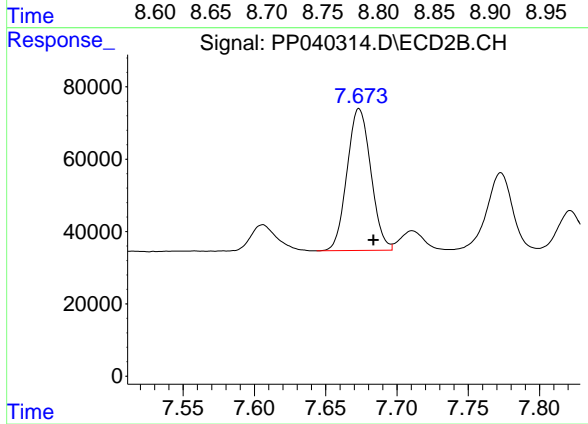
#33 AR-1260-3

R.T.: 7.189 min  
 Delta R.T.: -0.009 min  
 Response: 563878  
 Conc: 477.25 ng/ml



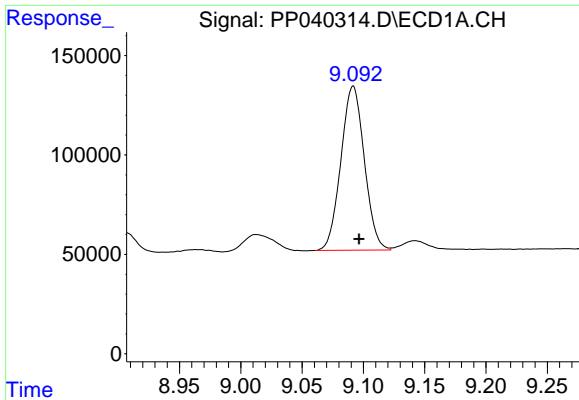
#34 AR-1260-4

R.T.: 8.767 min  
 Delta R.T.: -0.005 min  
 Response: 583095  
 Conc: 552.43 ng/ml



#34 AR-1260-4

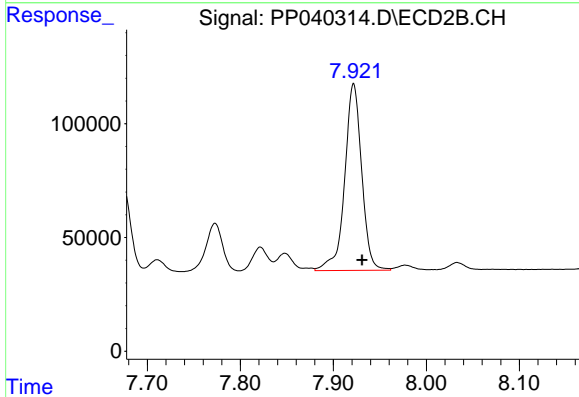
R.T.: 7.673 min  
 Delta R.T.: -0.010 min  
 Response: 456530  
 Conc: 519.42 ng/ml



#35 AR-1260-5

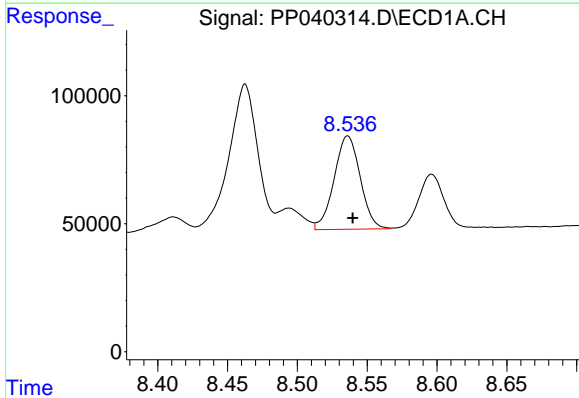
R.T.: 9.092 min  
 Delta R.T.: -0.005 min  
 Response: 1097543  
 Conc: 529.99 ng/ml

Instrument :  
 ECD\_P  
 ClientSampled :



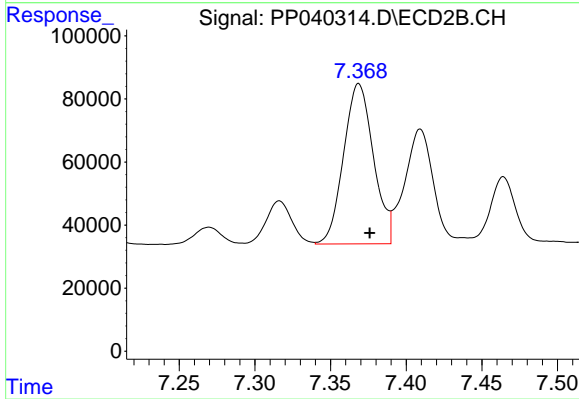
#35 AR-1260-5

R.T.: 7.922 min  
 Delta R.T.: -0.009 min  
 Response: 1042321  
 Conc: 510.02 ng/ml



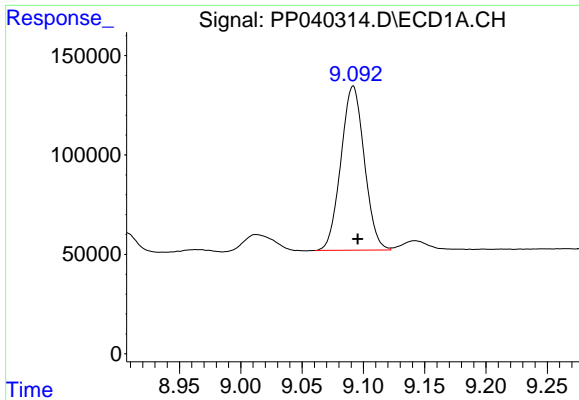
#36 AR-1262-1

R.T.: 8.536 min  
 Delta R.T.: -0.004 min  
 Response: 474693  
 Conc: 348.10 ng/ml



#36 AR-1262-1

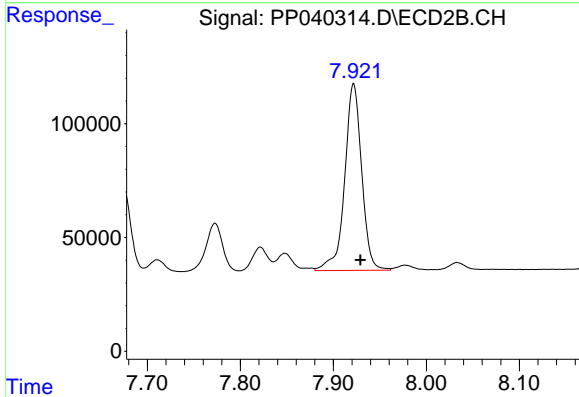
R.T.: 7.369 min  
 Delta R.T.: -0.007 min  
 Response: 698021  
 Conc: 993.66 ng/ml



#37 AR-1262-2

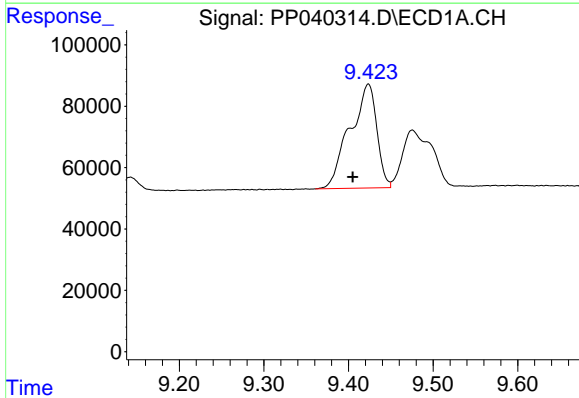
R.T.: 9.092 min  
 Delta R.T.: -0.004 min  
 Response: 1097543  
 Conc: 442.58 ng/ml

Instrument :  
 ECD\_P  
 ClientSampled :



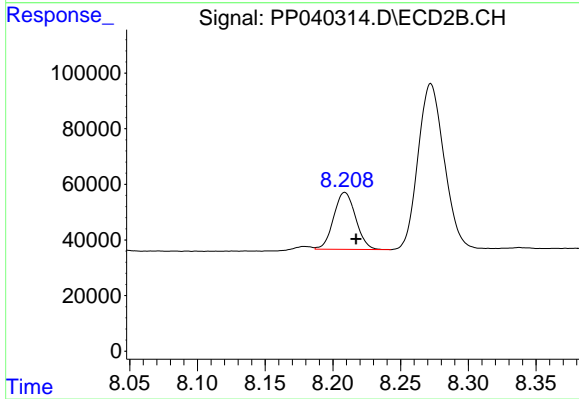
#37 AR-1262-2

R.T.: 7.922 min  
 Delta R.T.: -0.007 min  
 Response: 1042321  
 Conc: 463.17 ng/ml



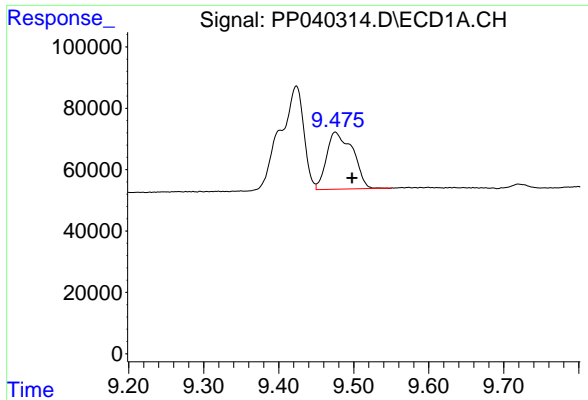
#38 AR-1262-3

R.T.: 9.424 min  
 Delta R.T.: 0.019 min  
 Response: 744503  
 Conc: 647.34 ng/ml



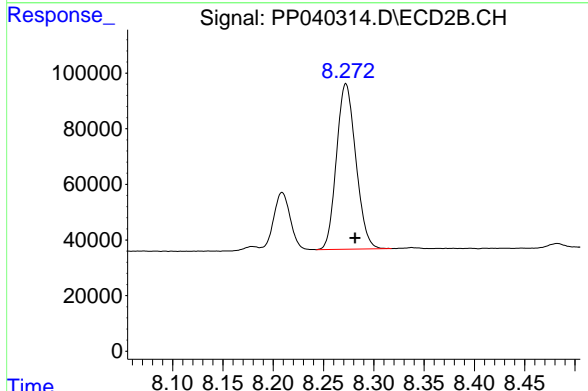
#38 AR-1262-3

R.T.: 8.209 min  
 Delta R.T.: -0.008 min  
 Response: 231204  
 Conc: 237.40 ng/ml

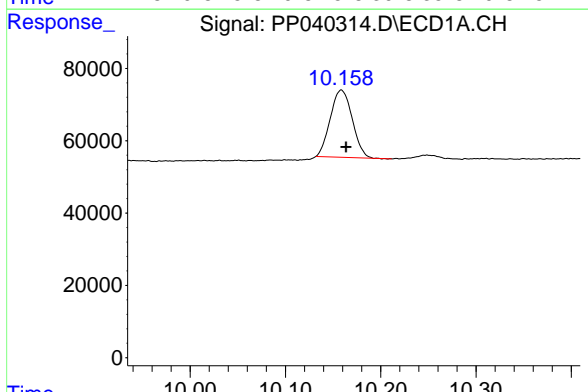


#39 AR-1262-4  
 R.T.: 9.475 min  
 Delta R.T.: -0.022 min  
 Response: 450593  
 Conc: 551.46 ng/ml

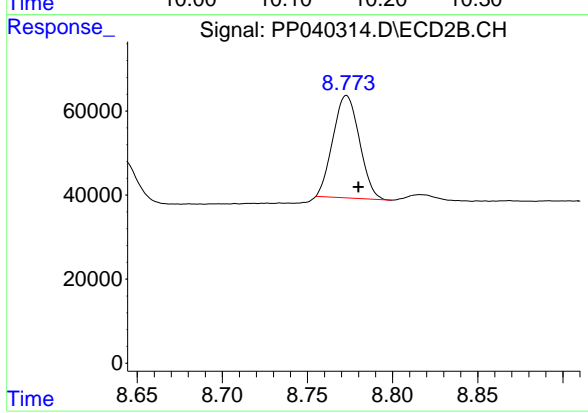
Instrument :  
 ECD\_P  
 ClientSampleId :



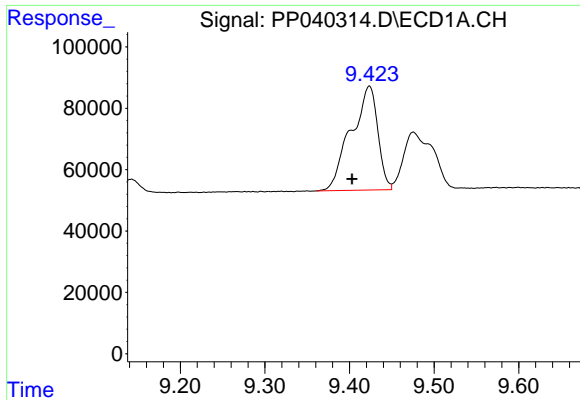
#39 AR-1262-4  
 R.T.: 8.272 min  
 Delta R.T.: -0.009 min  
 Response: 797370  
 Conc: 449.78 ng/ml



#40 AR-1262-5  
 R.T.: 10.159 min  
 Delta R.T.: -0.005 min  
 Response: 297292  
 Conc: 312.90 ng/ml

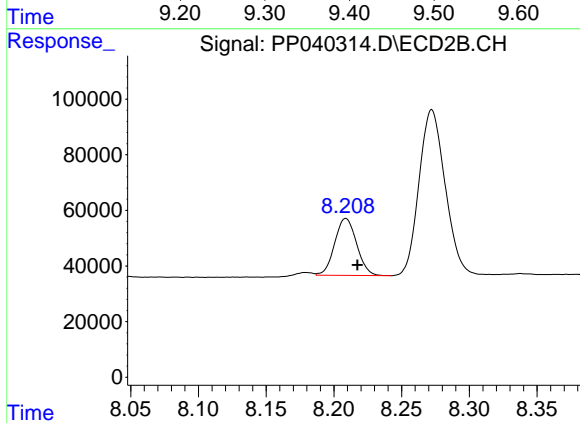


#40 AR-1262-5  
 R.T.: 8.773 min  
 Delta R.T.: -0.007 min  
 Response: 264123  
 Conc: 291.67 ng/ml

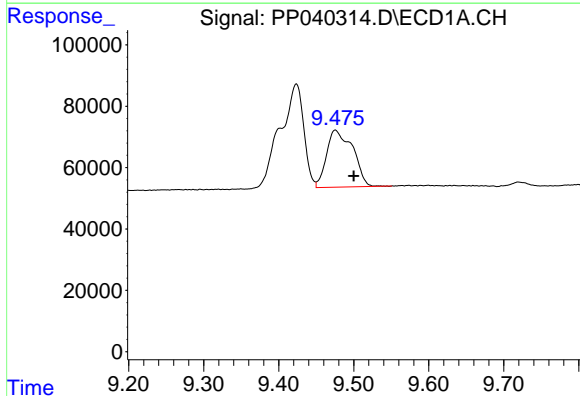


#41 AR-1268-1  
 R.T.: 9.424 min  
 Delta R.T.: 0.020 min  
 Response: 744503  
 Conc: 252.11 ng/ml

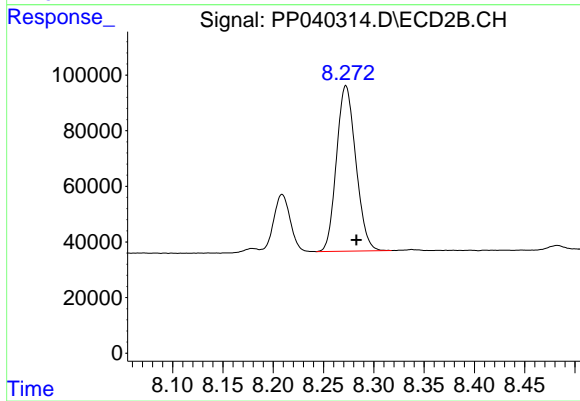
Instrument :  
 ECD\_P  
 ClientSampleId :



#41 AR-1268-1  
 R.T.: 8.209 min  
 Delta R.T.: -0.009 min  
 Response: 231204  
 Conc: 85.69 ng/ml

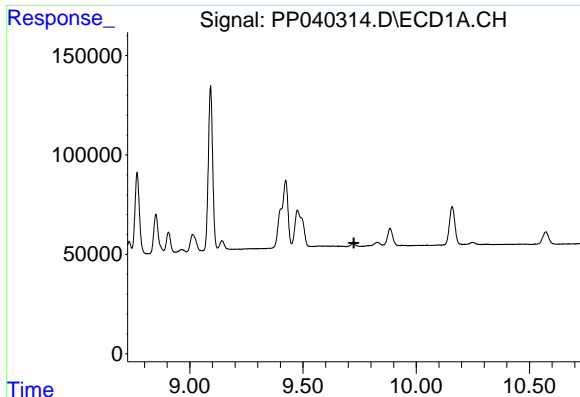


#42 AR-1268-2  
 R.T.: 9.475 min  
 Delta R.T.: -0.025 min  
 Response: 450593  
 Conc: 159.59 ng/ml



#42 AR-1268-2  
 R.T.: 8.272 min  
 Delta R.T.: -0.010 min  
 Response: 797370  
 Conc: 318.47 ng/ml

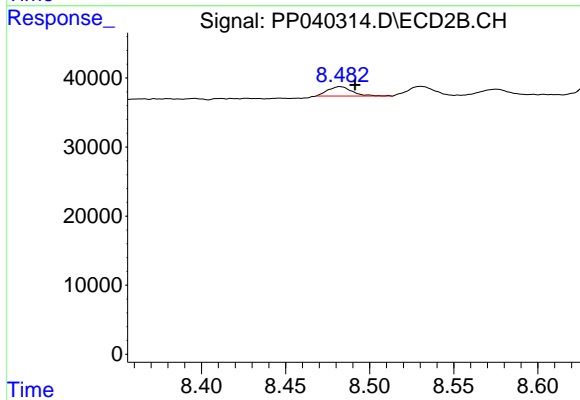




#43 AR-1268-3

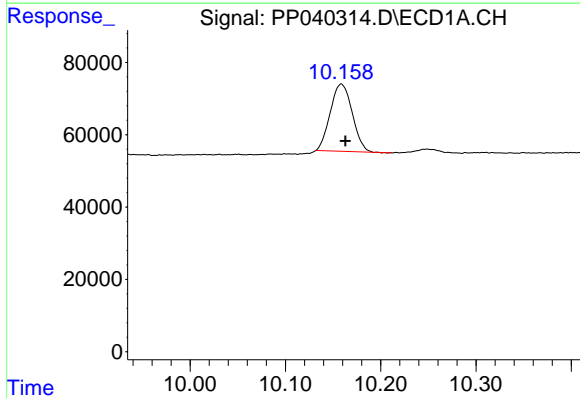
R.T.: 0.000 min  
 Exp R.T.: 9.725 min  
 Response: 0  
 Conc: N.D.

Instrument :  
 ECD\_P  
 ClientSampled :



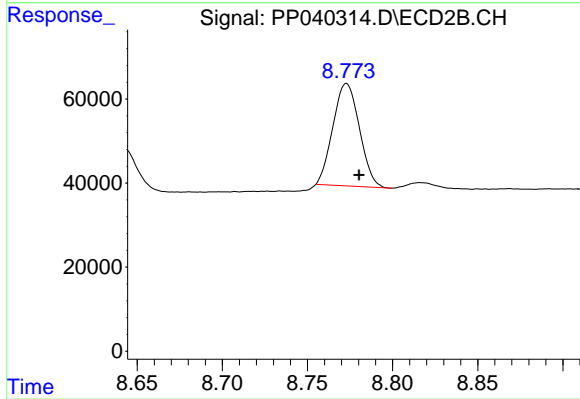
#43 AR-1268-3

R.T.: 8.483 min  
 Delta R.T.: -0.009 min  
 Response: 13718  
 Conc: 6.26 ng/ml



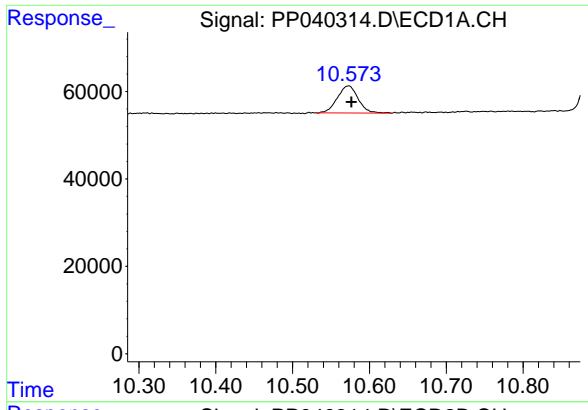
#44 AR-1268-4

R.T.: 10.159 min  
 Delta R.T.: -0.004 min  
 Response: 297292  
 Conc: 288.46 ng/ml



#44 AR-1268-4

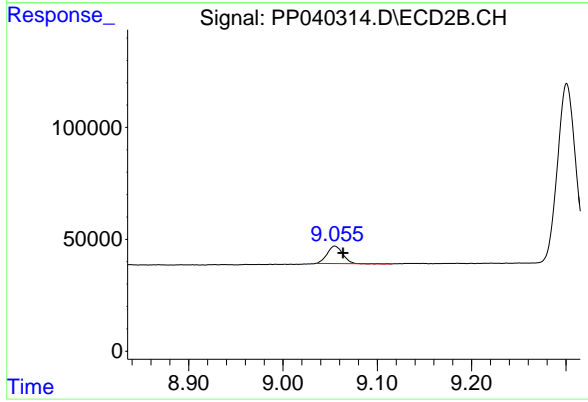
R.T.: 8.773 min  
 Delta R.T.: -0.007 min  
 Response: 264123  
 Conc: 266.35 ng/ml



#45 AR-1268-5

R.T.: 10.573 min  
Delta R.T.: -0.004 min  
Response: 116734  
Conc: 13.57 ng/ml

Instrument :  
ECD\_P  
ClientSampleId :



#45 AR-1268-5

R.T.: 9.055 min  
Delta R.T.: -0.009 min  
Response: 89328  
Conc: 12.53 ng/ml