

Data Path : Z:\pestpcbsrv\HPCHEM1\ECD_P\Data\PP102121\
 Data File : PP040321.D
 Signal(s) : Signal #1: ECD1A.CH Signal #2: ECD2B.CH
 Acq On : 21 Oct 2021 12:23
 Operator : AJ\MA
 Sample : M4284-05RE 10X
 Misc :
 ALS Vial : 9 Sample Multiplier: 1

Instrument :
 ECD_P
 ClientSampled :

Integration File signal 1: autoint1.e
 Integration File signal 2: autoint2.e
 Quant Time: Oct 21 16:38:44 2021
 Quant Method : Z:\pestpcbsrv\HPCHEM1\ECD_P\methods\PP102121.M
 Quant Title : GC EXTRACTABLES
 QLast Update : Wed Oct 13 08:03:59 2021
 Response via : Initial Calibration
 Integrator: ChemStation 6890 Scale Mode: Small noise peaks clipped

Volume Inj. : 2 µl
 Signal #1 Phase : ZB-MR1 Signal #2 Phase: ZB-MR2
 Signal #1 Info : 30Mx0.32mmx 0.50µ Signal #2 Info : 30M x 0.32mm x 0.25µm

Compound	RT#1	RT#2	Resp#1	Resp#2	ng/ml	ng/ml
System Monitoring Compounds						
1) SA Tetrachlo...	4.889	3.975	184283	26439	6.068	1.564 #
Target Compounds						
3) L1 AR-1016-1	6.218	5.250	1755067	827187	1777.442	1267.526 #
4) L1 AR-1016-2	6.242	5.269	1700176	695447	1189.771	760.689 #
5) L1 AR-1016-3	6.308	5.463	615023	265124	705.732	524.043 #
6) L1 AR-1016-4	6.413	5.516	616521	329658	866.459	805.120 #
7) L1 AR-1016-5	6.730	5.746	109781	48603	171.641	97.077 #
8) L2 AR-1221-1	5.147	4.233	120688	40573	346.548	198.260 #
9) L2 AR-1221-2	5.230	4.319f	354490	61381	1591.112	364.911 #
10) L2 AR-1221-3	5.331	4.429	305475	155013	378.915	286.244 #
11) L3 AR-1232-1	5.331	4.429	305475	155013	490.922	381.655 #
12) L3 AR-1232-2	5.920	5.269	1376315	695447	4010.023	1778.932 #
13) L3 AR-1232-3	6.242	5.463	1700176	265124	2689.770	1279.950 #
14) L3 AR-1232-4	6.413	5.562	616521	406615	1965.744	2149.008 #
15) L3 AR-1232-5	6.515	5.746	790304	48603	3370.296	235.409 #
16) L4 AR-1242-1	6.218	5.250	1755067	827187	2235.233	1662.421 #
17) L4 AR-1242-2	6.242	5.269	1700176	695447	1498.885	1018.227 #
18) L4 AR-1242-3	6.308	5.463	615023	265124	884.913	702.697 #
19) L4 AR-1242-4	6.413	5.562	616521	406615	1069.991	1097.694 #
20) L4 AR-1242-5	7.207	6.131	60259	119900	115.219	251.382 #
21) L5 AR-1248-1	6.218	5.250	1755067	827187	2844.982	2121.663 #
22) L5 AR-1248-2	6.515	5.516	790304	329658	987.243	613.319 #
23) L5 AR-1248-3	6.730	5.562	109781	406615	122.435	719.304 #
24) L5 AR-1248-4	7.147	5.746	233358	48603	253.584	76.053 #
25) L5 AR-1248-5	7.207	6.151f	60259	84870	68.121	136.044 #
26) L6 AR-1254-1	7.147f	6.131	233358	119900	251.518	125.153 #
27) L6 AR-1254-2	7.365	6.289	126862	47410	91.638	53.716 #
28) L6 AR-1254-3	7.753	6.714	121782	126961	85.481	93.123 #
29) L6 AR-1254-4	8.019f	6.938	99720	48074	94.237	56.049 #
30) L6 AR-1254-5	8.467	7.377	150446	139892	128.714	108.376 #
31) L7 AR-1260-1	7.910	6.848	170673	127775	156.238	127.566 #
32) L7 AR-1260-2	8.176	7.045	253674	185243	185.601	156.441 #
33) L7 AR-1260-3	8.541	7.200	91603	121836	100.524	103.119 #
34) L7 AR-1260-4	8.771	7.680	75907	51934	71.915	59.089 #
35) L7 AR-1260-5	9.093	7.927	161131	174633	77.809	85.449 #
36) L8 AR-1262-1	8.541	7.377	91603	139892	67.174	199.143 #
37) L8 AR-1262-2	9.093	7.927	161131	174633	64.975	77.600 #
38) L8 AR-1262-3	9.423f	8.215	106016	-2819	92.180	N.D. #
39) L8 AR-1262-4	9.476f	8.278	13419	86328	16.422	48.696 #
40) L8 AR-1262-5	0.000	8.774	0	36984	N.D.	40.840 #
41) L9 AR-1268-1	9.423f	8.215	106016	-2819	35.900	N.D. #
42) L9 AR-1268-2	9.476f	8.278	13419	86328	4.753	34.480 #

Data Path : Z:\pestpcbsrv\HPCHEM1\ECD_P\Data\PP102121\
 Data File : PP040321.D
 Signal(s) : Signal #1: ECD1A.CH Signal #2: ECD2B.CH
 Acq On : 21 Oct 2021 12:23
 Operator : AJ\MA
 Sample : M4284-05RE 10X
 Misc :
 ALS Vial : 9 Sample Multiplier: 1

Instrument :
 ECD_P
 ClientSampleId :

Integration File signal 1: autoint1.e
 Integration File signal 2: autoint2.e
 Quant Time: Oct 21 16:38:44 2021
 Quant Method : Z:\pestpcbsrv\HPCHEM1\ECD_P\methods\PP101221.M
 Quant Title : GC EXTRACTABLES
 QLast Update : Wed Oct 13 08:03:59 2021
 Response via : Initial Calibration
 Integrator: ChemStation 6890 Scale Mode: Small noise peaks clipped

Volume Inj. : 2 µl
 Signal #1 Phase : ZB-MR1 Signal #2 Phase: ZB-MR2
 Signal #1 Info : 30Mx0.32mmx 0.50µ Signal #2 Info : 30M x 0.32mm x 0.25µm

	Compound	RT#1	RT#2	Resp#1	Resp#2	ng/ml	ng/ml
44)	L9 AR-1268-4	0.000	8.774	0	36984	N.D.	37.296 #
45)	L9 AR-1268-5	0.000	9.085f	0	17575	N.D.	2.465 #

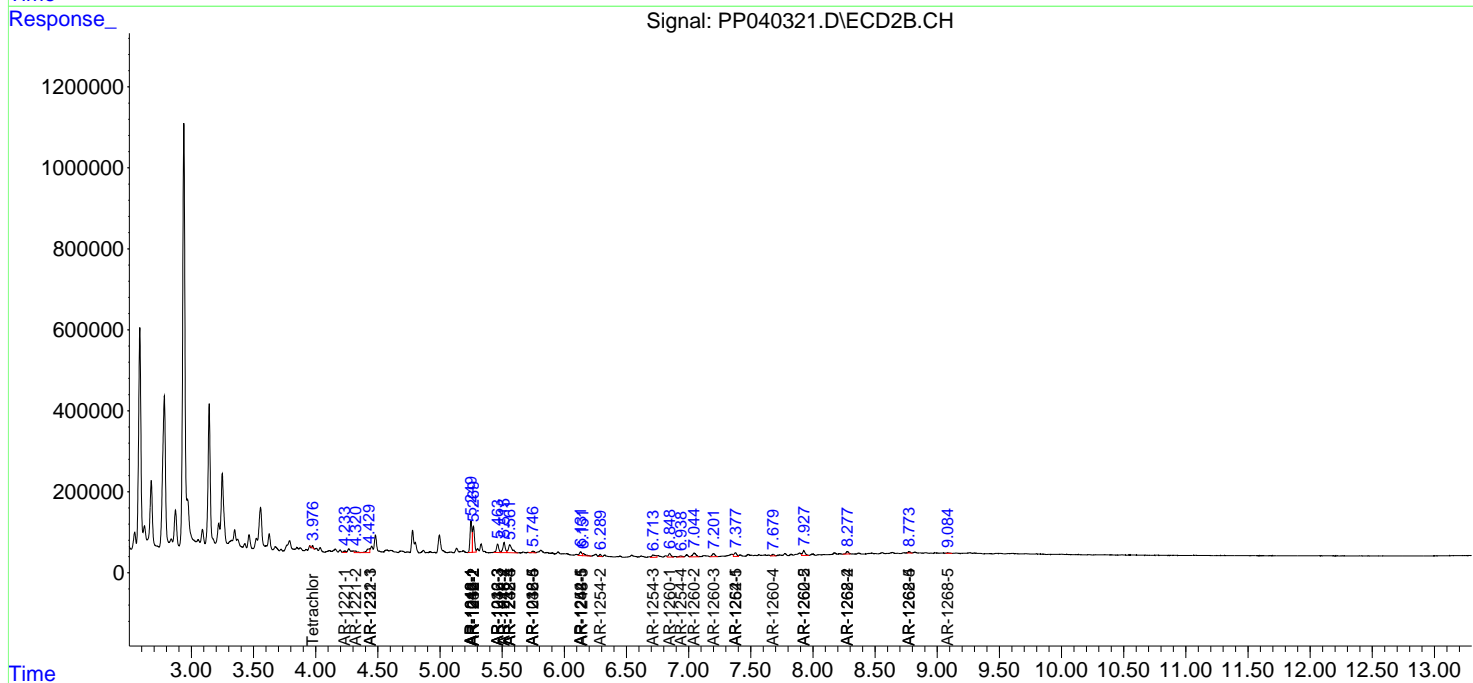
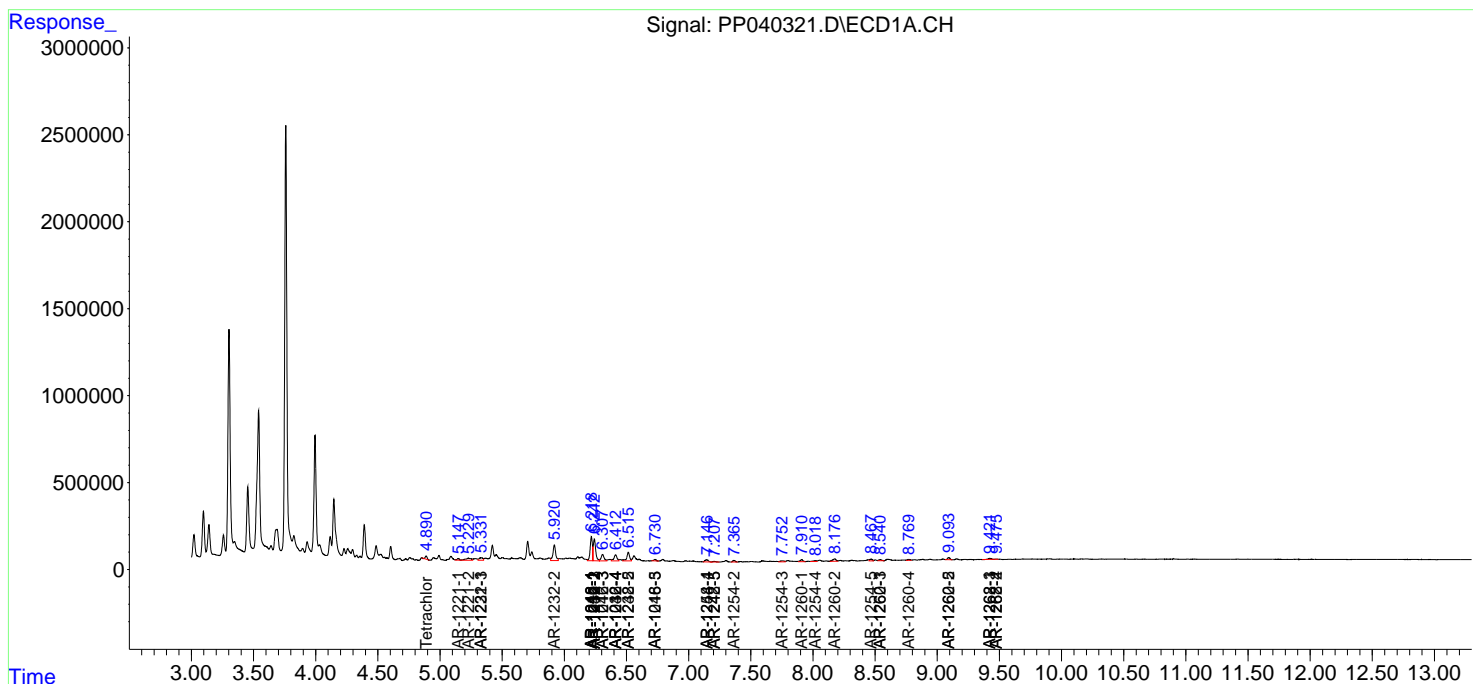
(f)=RT Delta > 1/2 Window (#)=Amounts differ by > 25% (m)=manual int.

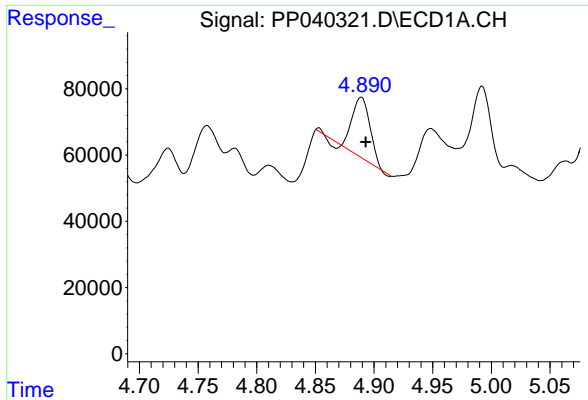
Data Path : Z:\pestpcbsrv\HPCHEM1\ECD_P\Data\PP102121\
 Data File : PP040321.D
 Signal(s) : Signal #1: ECD1A.CH Signal #2: ECD2B.CH
 Acq On : 21 Oct 2021 12:23
 Operator : AJ\MA
 Sample : M4284-05RE 10X
 Misc :
 ALS Vial : 9 Sample Multiplier: 1

Instrument :
 ECD_P
 ClientSampled :

Integration File signal 1: autoint1.e
 Integration File signal 2: autoint2.e
 Quant Time: Oct 21 16:38:44 2021
 Quant Method : Z:\pestpcbsrv\HPCHEM1\ECD_P\methods\PP101221.M
 Quant Title : GC EXTRACTABLES
 QLast Update : Wed Oct 13 08:03:59 2021
 Response via : Initial Calibration
 Integrator: ChemStation 6890 Scale Mode: Small noise peaks clipped

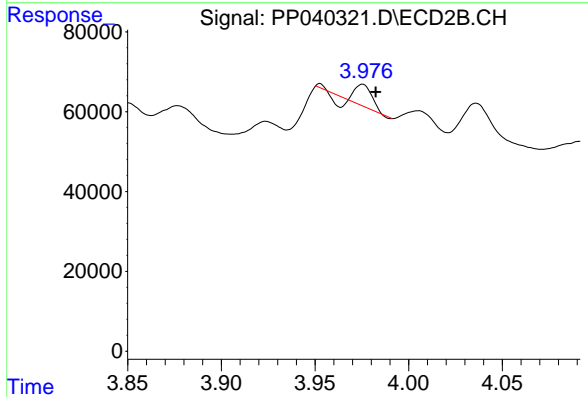
Volume Inj. : 2 µl
 Signal #1 Phase : ZB-MR1 Signal #2 Phase: ZB-MR2
 Signal #1 Info : 30Mx0.32mmx 0.50µ Signal #2 Info : 30M x 0.32mm x 0.25µm



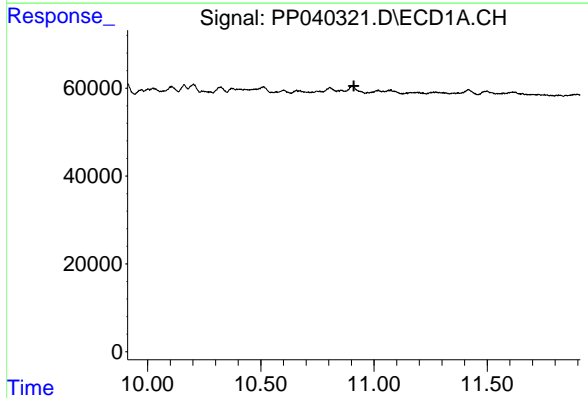


#1 Tetrachloro-m-xylene
 R.T.: 4.889 min
 Delta R.T.: -0.004 min
 Response: 184283
 Conc: 6.07 ng/ml

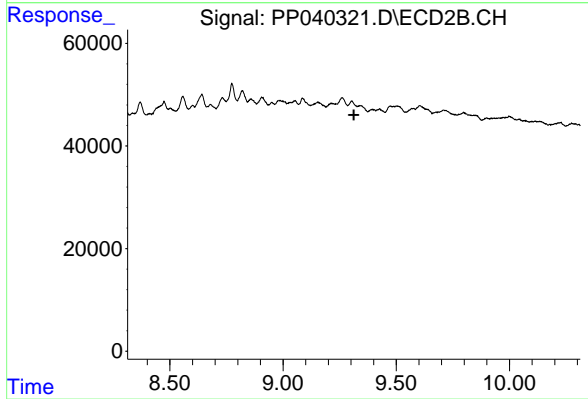
Instrument :
 ECD_P
 ClientSampleId :



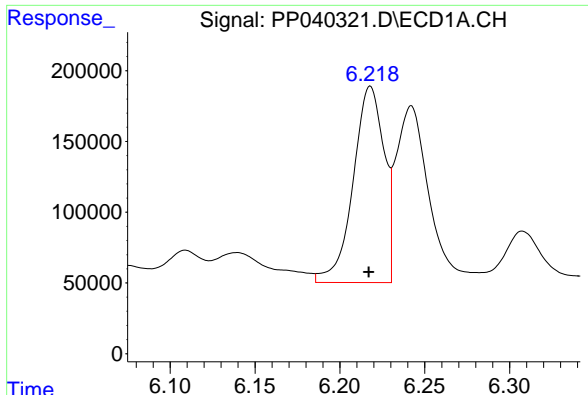
#1 Tetrachloro-m-xylene
 R.T.: 3.975 min
 Delta R.T.: -0.007 min
 Response: 26439
 Conc: 1.56 ng/ml



#2 Decachlorobiphenyl
 R.T.: 0.000 min
 Exp R.T. : 10.911 min
 Response: 0
 Conc: N.D.

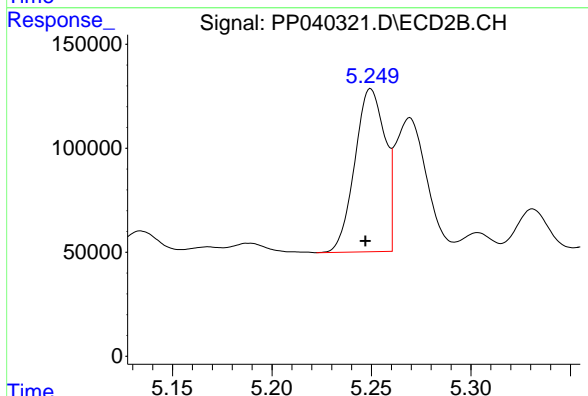


#2 Decachlorobiphenyl
 R.T.: 0.000 min
 Exp R.T. : 9.313 min
 Response: 0
 Conc: N.D.

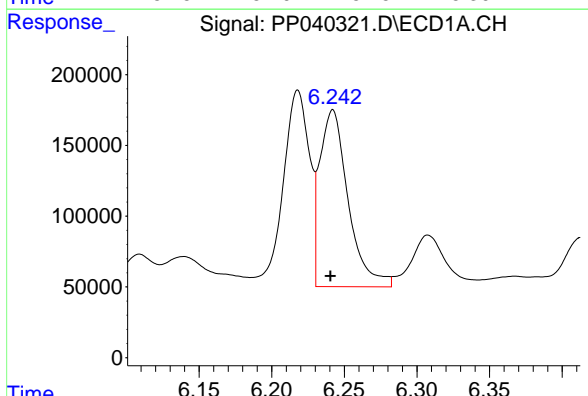


#3 AR-1016-1
 R.T.: 6.218 min
 Delta R.T.: 0.000 min
 Response: 1755067
 Conc: 1777.44 ng/ml

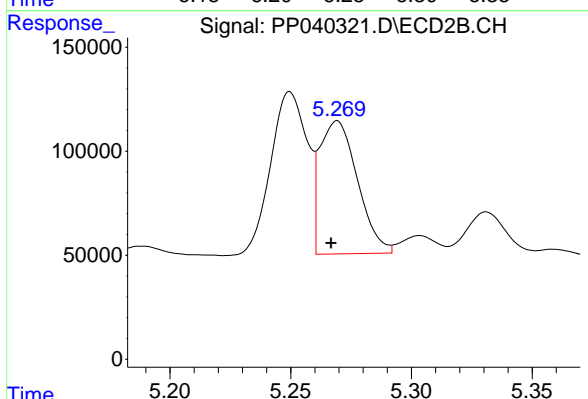
Instrument :
 ECD_P
 ClientSampleId :



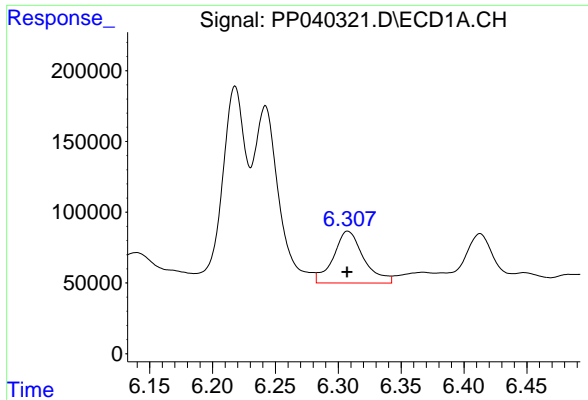
#3 AR-1016-1
 R.T.: 5.250 min
 Delta R.T.: 0.003 min
 Response: 827187
 Conc: 1267.53 ng/ml



#4 AR-1016-2
 R.T.: 6.242 min
 Delta R.T.: 0.002 min
 Response: 1700176
 Conc: 1189.77 ng/ml

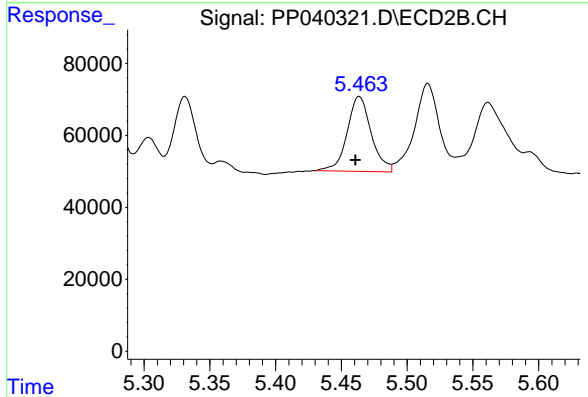


#4 AR-1016-2
 R.T.: 5.269 min
 Delta R.T.: 0.003 min
 Response: 695447
 Conc: 760.69 ng/ml

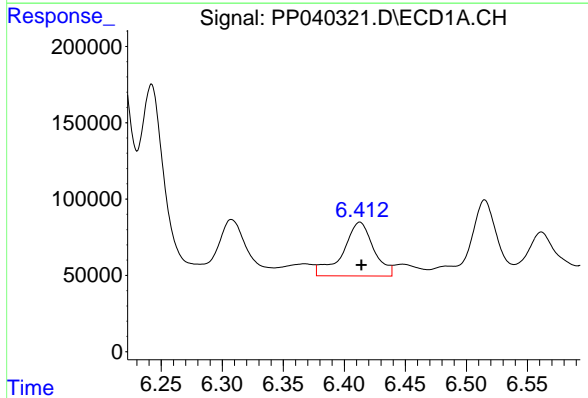


#5 AR-1016-3
 R.T.: 6.308 min
 Delta R.T.: 0.000 min
 Response: 615023
 Conc: 705.73 ng/ml

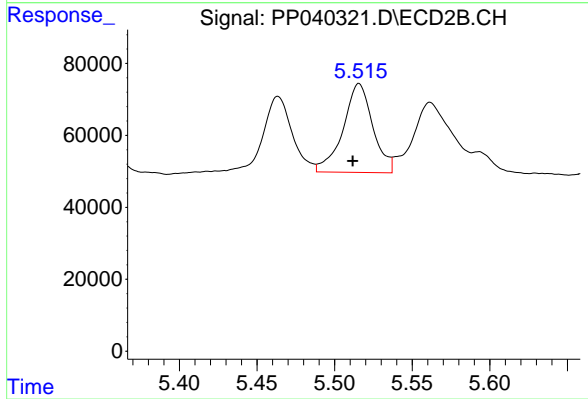
Instrument :
 ECD_P
 ClientSampleId :



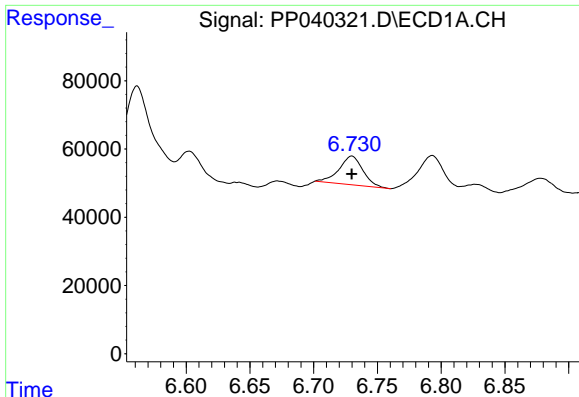
#5 AR-1016-3
 R.T.: 5.463 min
 Delta R.T.: 0.003 min
 Response: 265124
 Conc: 524.04 ng/ml



#6 AR-1016-4
 R.T.: 6.413 min
 Delta R.T.: -0.001 min
 Response: 616521
 Conc: 866.46 ng/ml



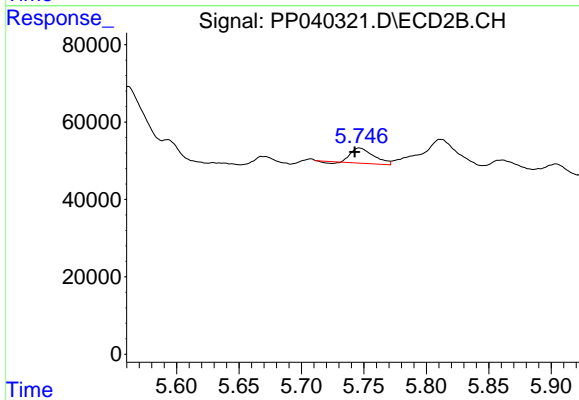
#6 AR-1016-4
 R.T.: 5.516 min
 Delta R.T.: 0.004 min
 Response: 329658
 Conc: 805.12 ng/ml



#7 AR-1016-5

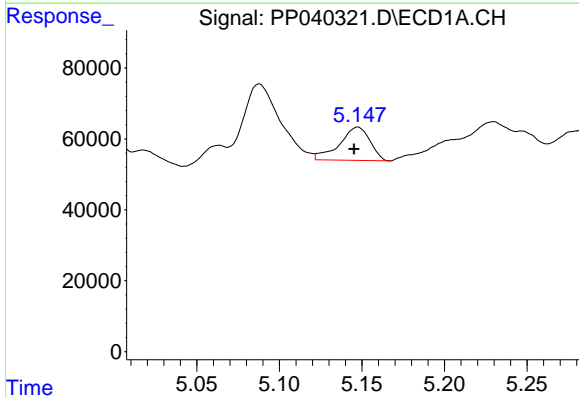
R.T.: 6.730 min
 Delta R.T.: 0.000 min
 Response: 109781
 Conc: 171.64 ng/ml

Instrument :
 ECD_P
 ClientSampleId :



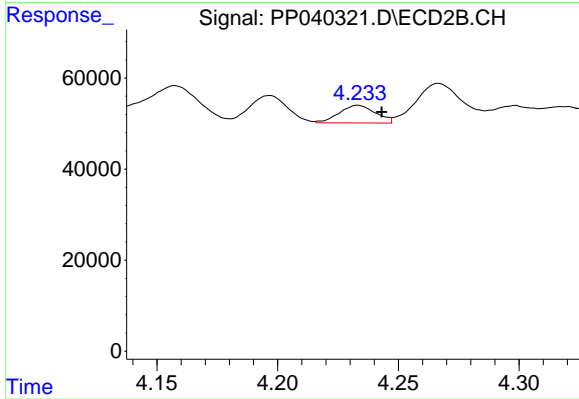
#7 AR-1016-5

R.T.: 5.746 min
 Delta R.T.: 0.004 min
 Response: 48603
 Conc: 97.08 ng/ml



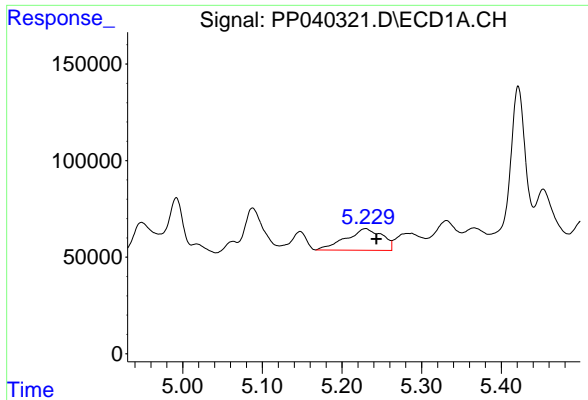
#8 AR-1221-1

R.T.: 5.147 min
 Delta R.T.: 0.002 min
 Response: 120688
 Conc: 346.55 ng/ml



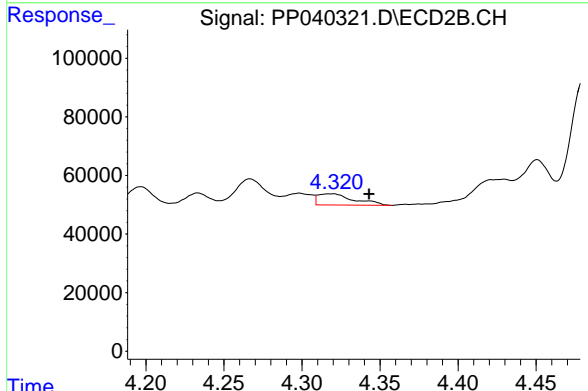
#8 AR-1221-1

R.T.: 4.233 min
 Delta R.T.: -0.010 min
 Response: 40573
 Conc: 198.26 ng/ml

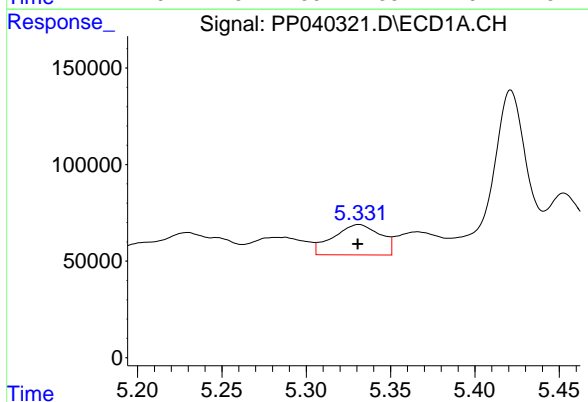


#9 AR-1221-2
 R.T.: 5.230 min
 Delta R.T.: -0.014 min
 Response: 354490
 Conc: 1591.11 ng/ml

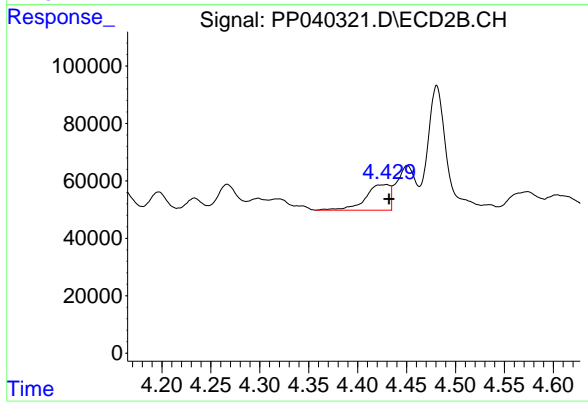
Instrument :
 ECD_P
 ClientSampleId :



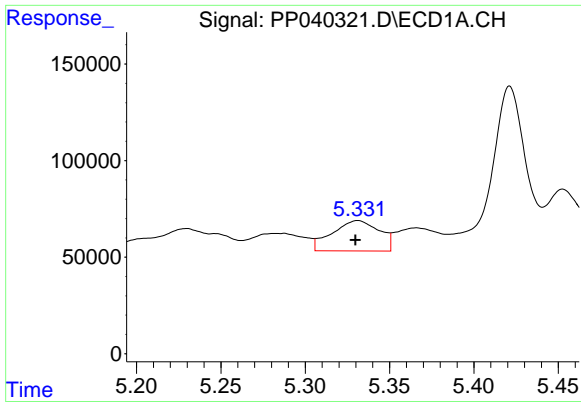
#9 AR-1221-2
 R.T.: 4.319 min
 Delta R.T.: -0.024 min
 Response: 61381
 Conc: 364.91 ng/ml



#10 AR-1221-3
 R.T.: 5.331 min
 Delta R.T.: 0.000 min
 Response: 305475
 Conc: 378.91 ng/ml

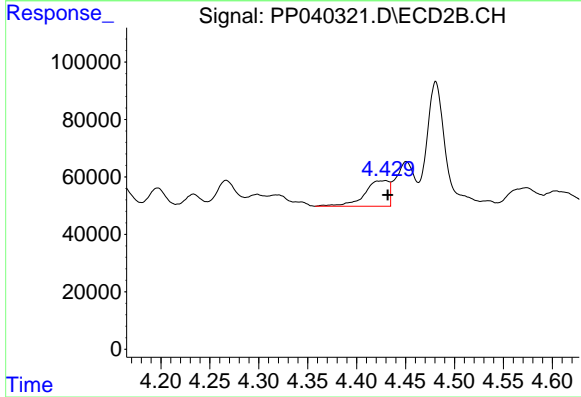


#10 AR-1221-3
 R.T.: 4.429 min
 Delta R.T.: -0.003 min
 Response: 155013
 Conc: 286.24 ng/ml

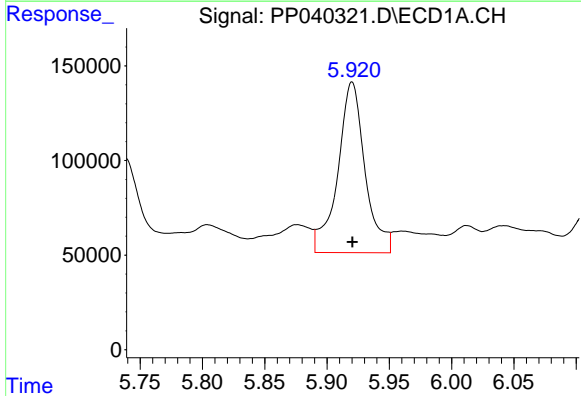


#11 AR-1232-1
 R.T.: 5.331 min
 Delta R.T.: 0.001 min
 Response: 305475
 Conc: 490.92 ng/ml

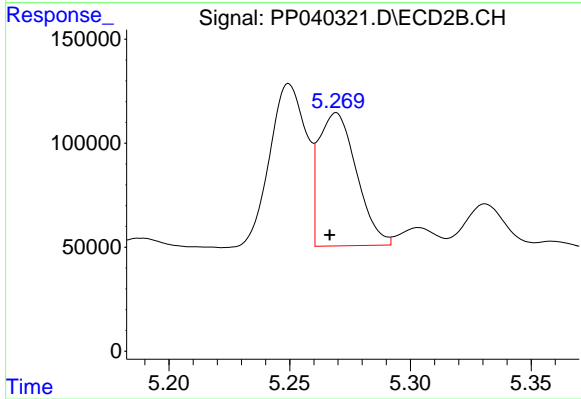
Instrument :
 ECD_P
 ClientSampleId :



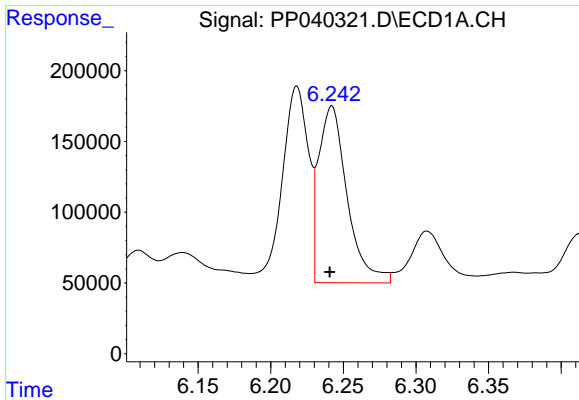
#11 AR-1232-1
 R.T.: 4.429 min
 Delta R.T.: -0.002 min
 Response: 155013
 Conc: 381.65 ng/ml



#12 AR-1232-2
 R.T.: 5.920 min
 Delta R.T.: 0.000 min
 Response: 1376315
 Conc: 4010.02 ng/ml

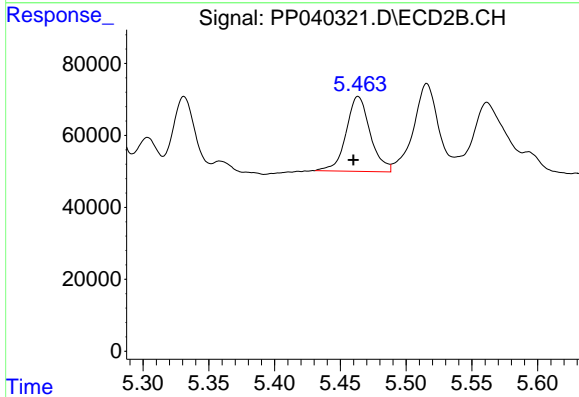


#12 AR-1232-2
 R.T.: 5.269 min
 Delta R.T.: 0.003 min
 Response: 695447
 Conc: 1778.93 ng/ml

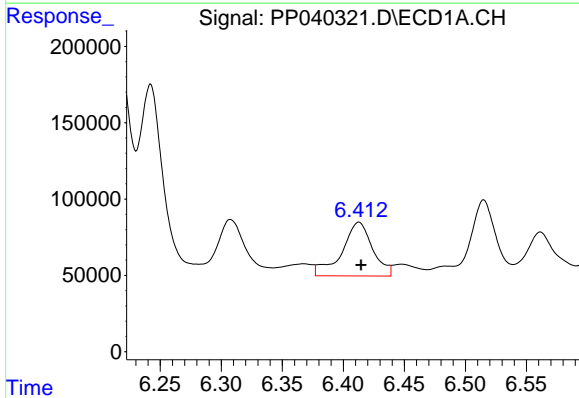


#13 AR-1232-3
 R.T.: 6.242 min
 Delta R.T.: 0.001 min
 Response: 1700176
 Conc: 2689.77 ng/ml

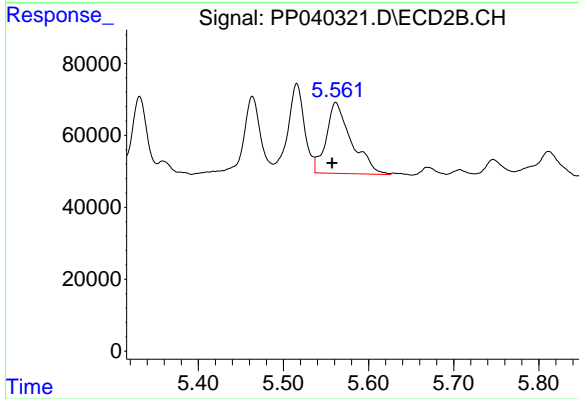
Instrument :
 ECD_P
 ClientSampleId :



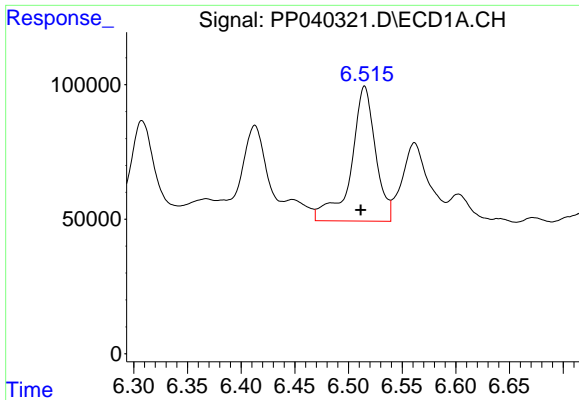
#13 AR-1232-3
 R.T.: 5.463 min
 Delta R.T.: 0.003 min
 Response: 265124
 Conc: 1279.95 ng/ml



#14 AR-1232-4
 R.T.: 6.413 min
 Delta R.T.: -0.002 min
 Response: 616521
 Conc: 1965.74 ng/ml

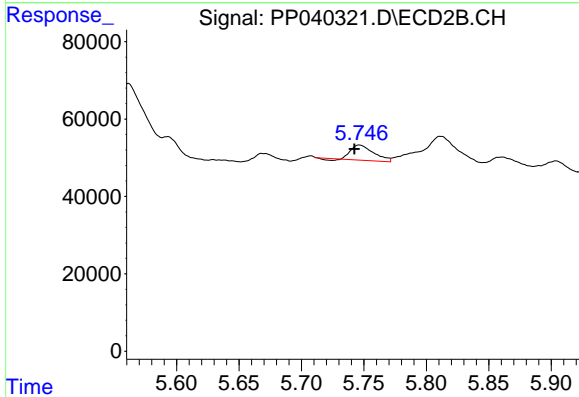


#14 AR-1232-4
 R.T.: 5.562 min
 Delta R.T.: 0.005 min
 Response: 406615
 Conc: 2149.01 ng/ml

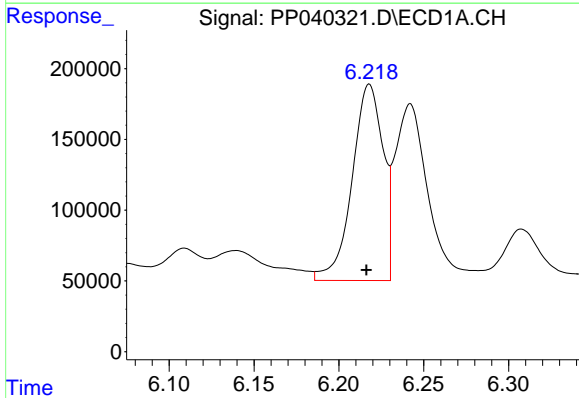


#15 AR-1232-5
 R.T.: 6.515 min
 Delta R.T.: 0.004 min
 Response: 790304
 Conc: 3370.30 ng/ml

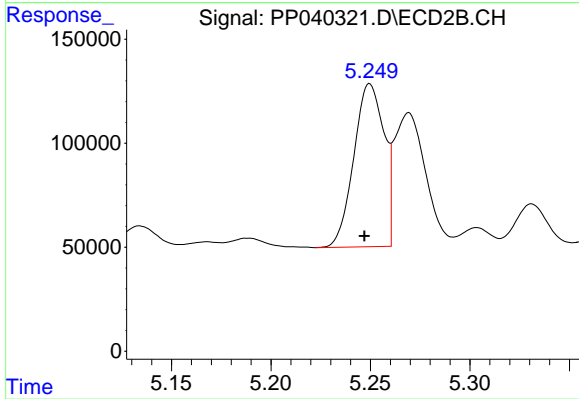
Instrument :
 ECD_P
 ClientSampleId :



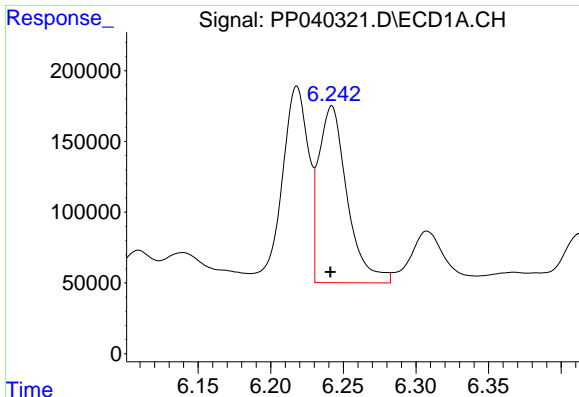
#15 AR-1232-5
 R.T.: 5.746 min
 Delta R.T.: 0.004 min
 Response: 48603
 Conc: 235.41 ng/ml



#16 AR-1242-1
 R.T.: 6.218 min
 Delta R.T.: 0.002 min
 Response: 1755067
 Conc: 2235.23 ng/ml



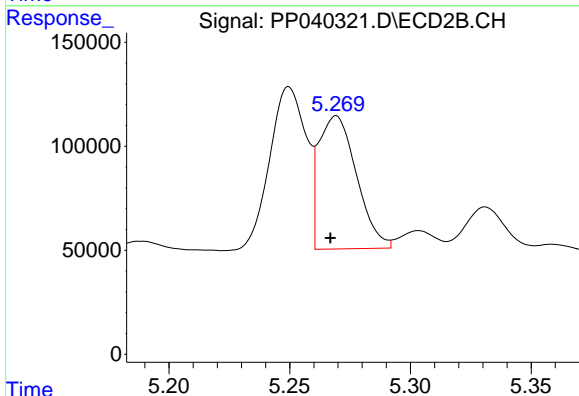
#16 AR-1242-1
 R.T.: 5.250 min
 Delta R.T.: 0.003 min
 Response: 827187
 Conc: 1662.42 ng/ml



#17 AR-1242-2

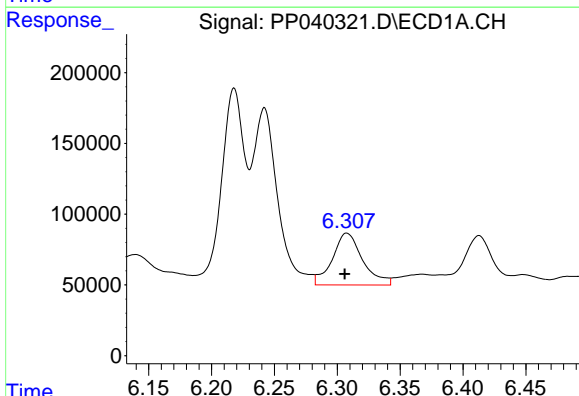
R.T.: 6.242 min
 Delta R.T.: 0.000 min
 Response: 1700176
 Conc: 1498.88 ng/ml

Instrument :
 ECD_P
 ClientSampleId :



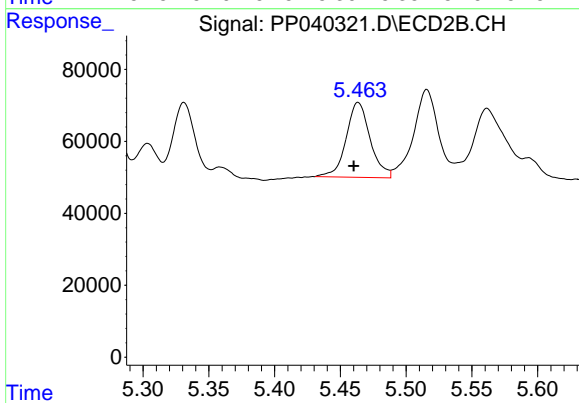
#17 AR-1242-2

R.T.: 5.269 min
 Delta R.T.: 0.002 min
 Response: 695447
 Conc: 1018.23 ng/ml



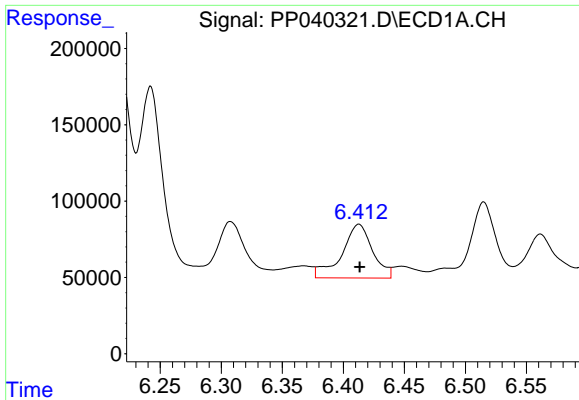
#18 AR-1242-3

R.T.: 6.308 min
 Delta R.T.: 0.002 min
 Response: 615023
 Conc: 884.91 ng/ml



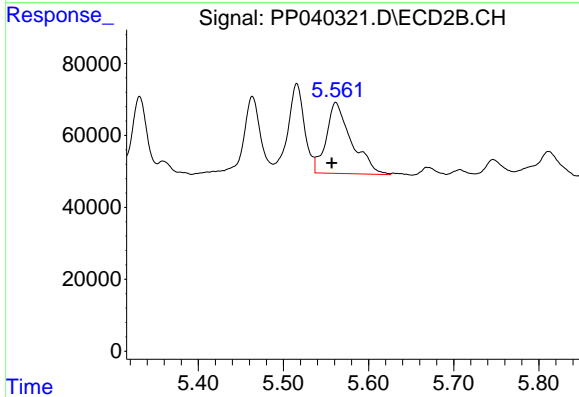
#18 AR-1242-3

R.T.: 5.463 min
 Delta R.T.: 0.003 min
 Response: 265124
 Conc: 702.70 ng/ml

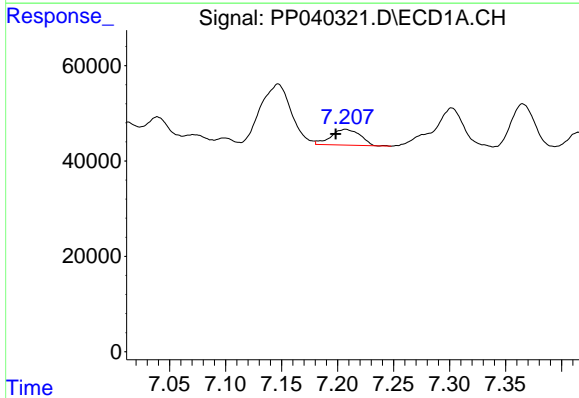


#19 AR-1242-4
 R.T.: 6.413 min
 Delta R.T.: 0.000 min
 Response: 616521
 Conc: 1069.99 ng/ml

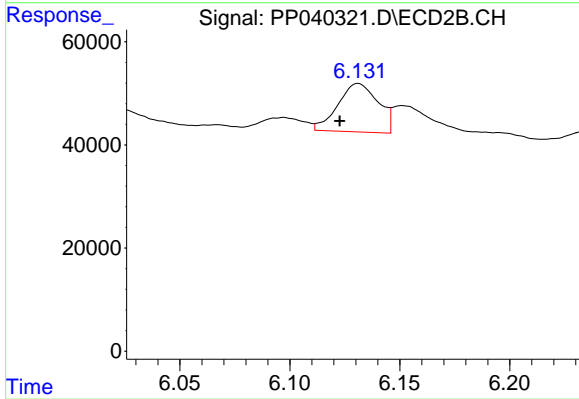
Instrument :
 ECD_P
 ClientSampleId :



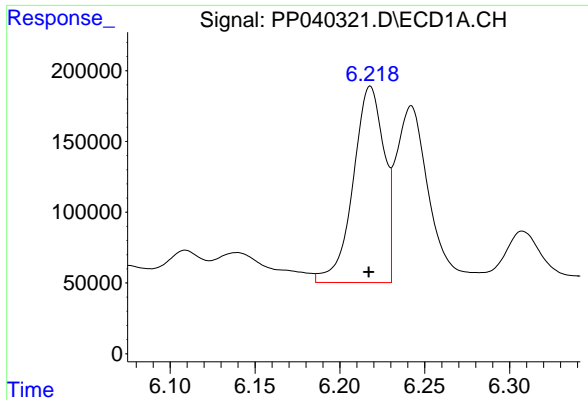
#19 AR-1242-4
 R.T.: 5.562 min
 Delta R.T.: 0.005 min
 Response: 406615
 Conc: 1097.69 ng/ml



#20 AR-1242-5
 R.T.: 7.207 min
 Delta R.T.: 0.009 min
 Response: 60259
 Conc: 115.22 ng/ml

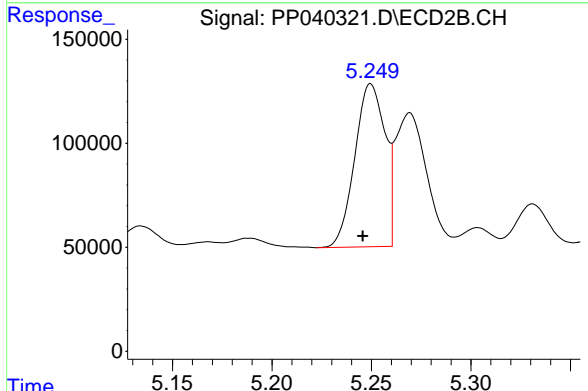


#20 AR-1242-5
 R.T.: 6.131 min
 Delta R.T.: 0.008 min
 Response: 119900
 Conc: 251.38 ng/ml

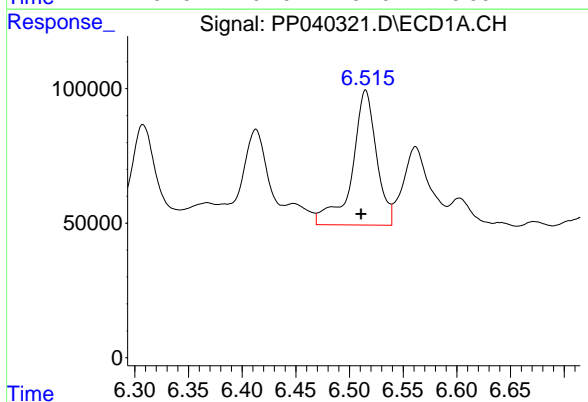


#21 AR-1248-1
 R.T.: 6.218 min
 Delta R.T.: 0.000 min
 Response: 1755067
 Conc: 2844.98 ng/ml

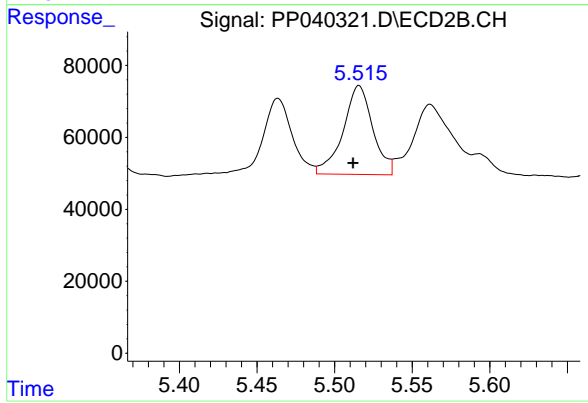
Instrument :
 ECD_P
 ClientSampleId :



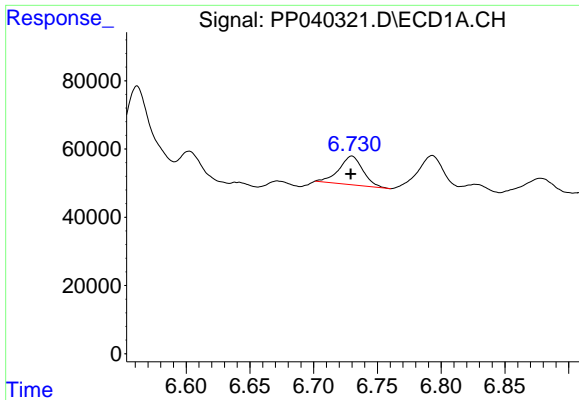
#21 AR-1248-1
 R.T.: 5.250 min
 Delta R.T.: 0.004 min
 Response: 827187
 Conc: 2121.66 ng/ml



#22 AR-1248-2
 R.T.: 6.515 min
 Delta R.T.: 0.004 min
 Response: 790304
 Conc: 987.24 ng/ml



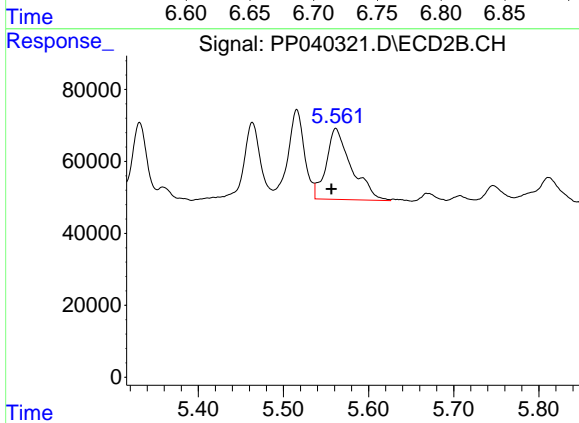
#22 AR-1248-2
 R.T.: 5.516 min
 Delta R.T.: 0.004 min
 Response: 329658
 Conc: 613.32 ng/ml



#23 AR-1248-3

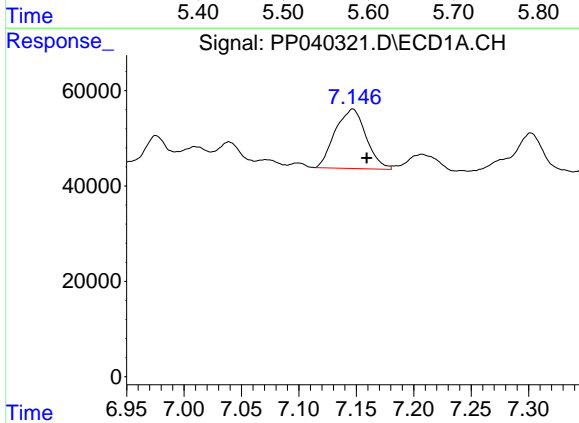
R.T.: 6.730 min
 Delta R.T.: 0.000 min
 Response: 109781
 Conc: 122.43 ng/ml

Instrument :
 ECD_P
 ClientSampled :



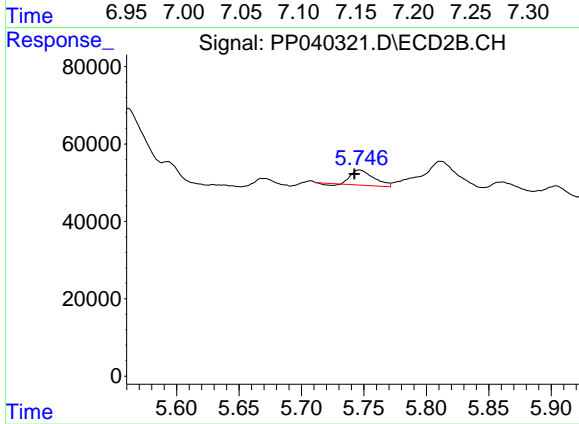
#23 AR-1248-3

R.T.: 5.562 min
 Delta R.T.: 0.005 min
 Response: 406615
 Conc: 719.30 ng/ml



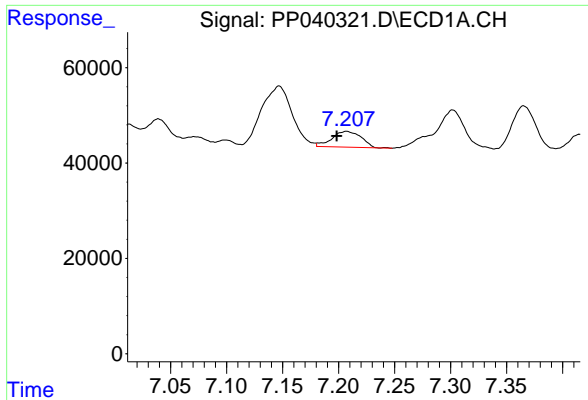
#24 AR-1248-4

R.T.: 7.147 min
 Delta R.T.: -0.012 min
 Response: 233358
 Conc: 253.58 ng/ml



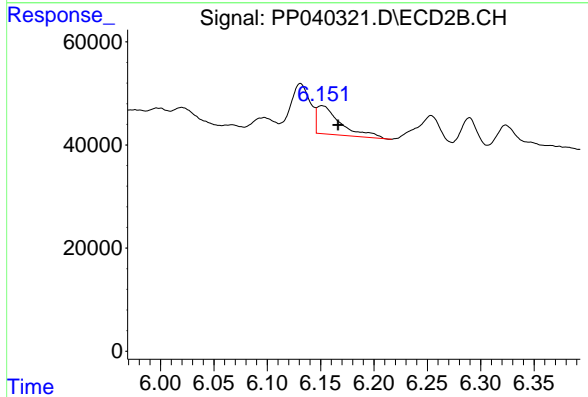
#24 AR-1248-4

R.T.: 5.746 min
 Delta R.T.: 0.004 min
 Response: 48603
 Conc: 76.05 ng/ml

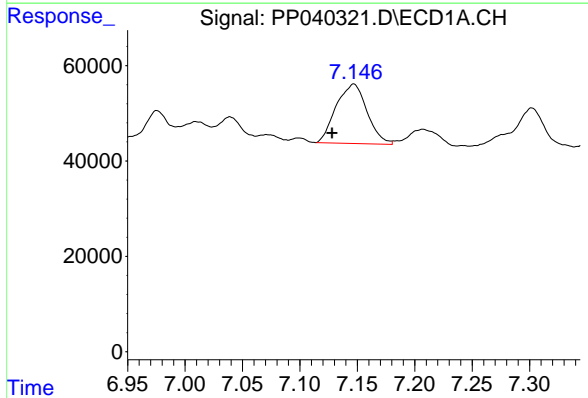


#25 AR-1248-5
 R.T.: 7.207 min
 Delta R.T.: 0.009 min
 Response: 60259
 Conc: 68.12 ng/ml

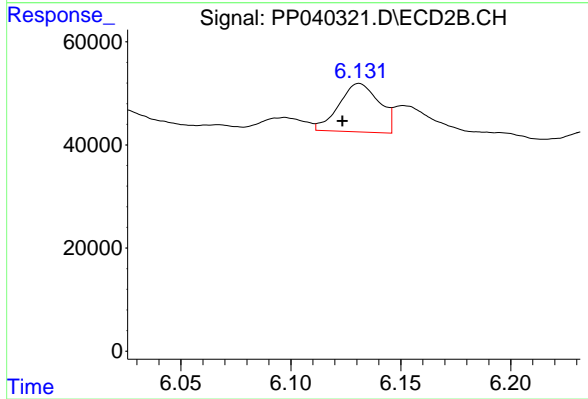
Instrument :
 ECD_P
 ClientSampleId :



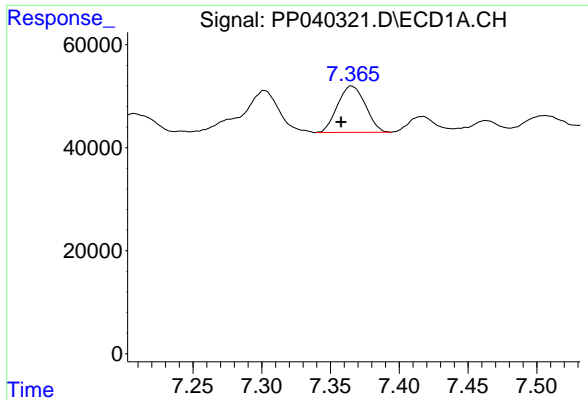
#25 AR-1248-5
 R.T.: 6.151 min
 Delta R.T.: -0.015 min
 Response: 84870
 Conc: 136.04 ng/ml



#26 AR-1254-1
 R.T.: 7.147 min
 Delta R.T.: 0.019 min
 Response: 233358
 Conc: 251.52 ng/ml



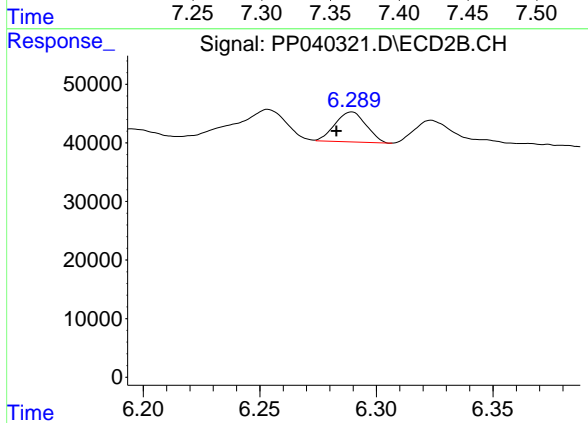
#26 AR-1254-1
 R.T.: 6.131 min
 Delta R.T.: 0.008 min
 Response: 119900
 Conc: 125.15 ng/ml



#27 AR-1254-2

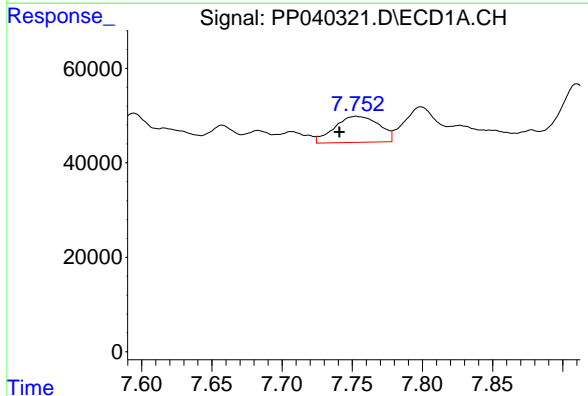
R.T.: 7.365 min
 Delta R.T.: 0.007 min
 Response: 126862
 Conc: 91.64 ng/ml

Instrument :
 ECD_P
 ClientSampleId :



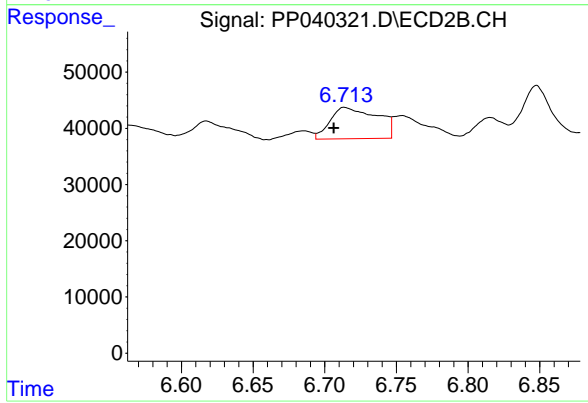
#27 AR-1254-2

R.T.: 6.289 min
 Delta R.T.: 0.007 min
 Response: 47410
 Conc: 53.72 ng/ml



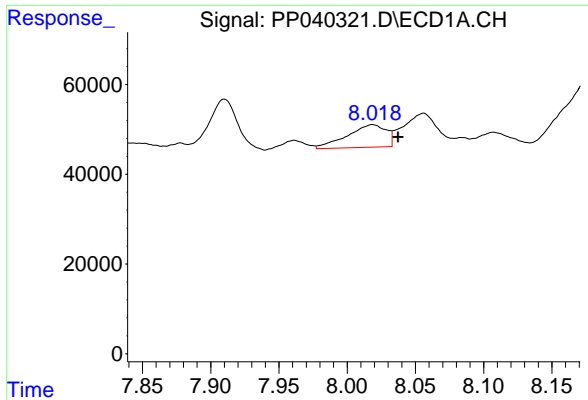
#28 AR-1254-3

R.T.: 7.753 min
 Delta R.T.: 0.012 min
 Response: 121782
 Conc: 85.48 ng/ml



#28 AR-1254-3

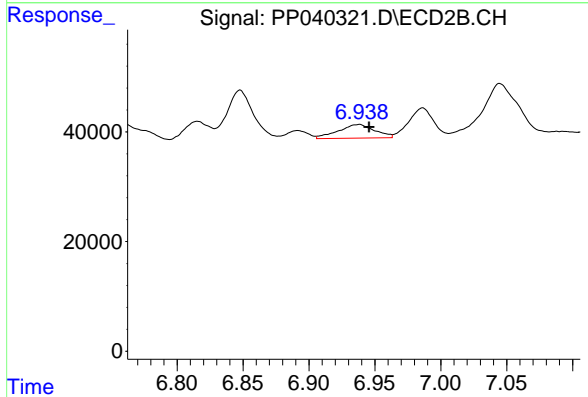
R.T.: 6.714 min
 Delta R.T.: 0.007 min
 Response: 126961
 Conc: 93.12 ng/ml



#29 AR-1254-4

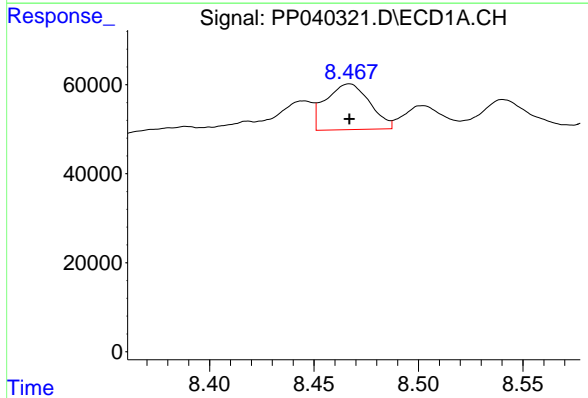
R.T.: 8.019 min
 Delta R.T.: -0.019 min
 Response: 99720
 Conc: 94.24 ng/ml

Instrument :
 ECD_P
 ClientSampled :



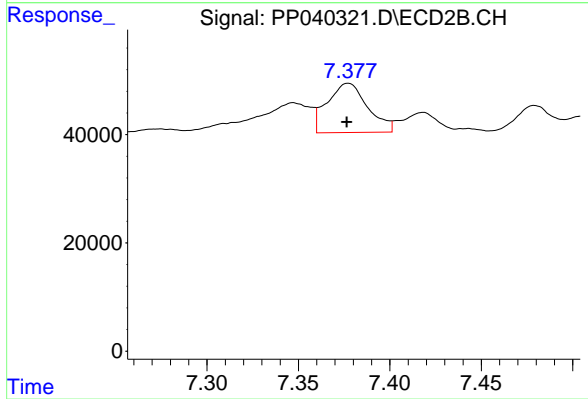
#29 AR-1254-4

R.T.: 6.938 min
 Delta R.T.: -0.007 min
 Response: 48074
 Conc: 56.05 ng/ml



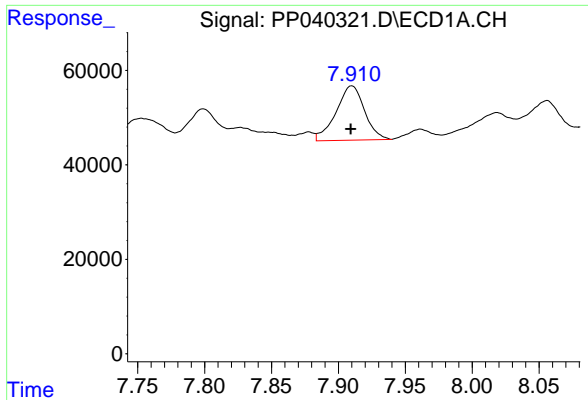
#30 AR-1254-5

R.T.: 8.467 min
 Delta R.T.: 0.000 min
 Response: 150446
 Conc: 128.71 ng/ml



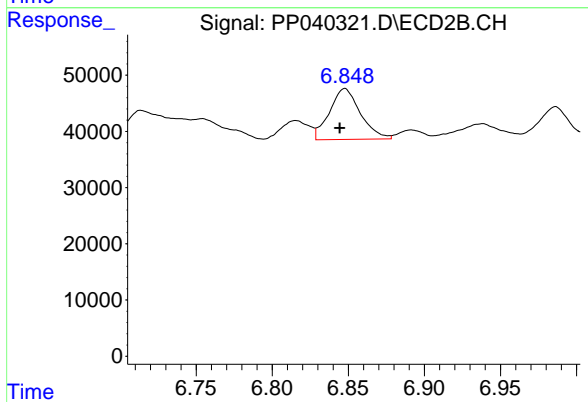
#30 AR-1254-5

R.T.: 7.377 min
 Delta R.T.: 0.000 min
 Response: 139892
 Conc: 108.38 ng/ml

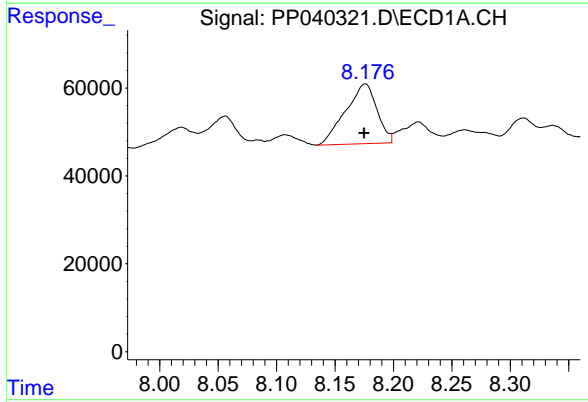


#31 AR-1260-1
 R.T.: 7.910 min
 Delta R.T.: 0.000 min
 Response: 170673
 Conc: 156.24 ng/ml

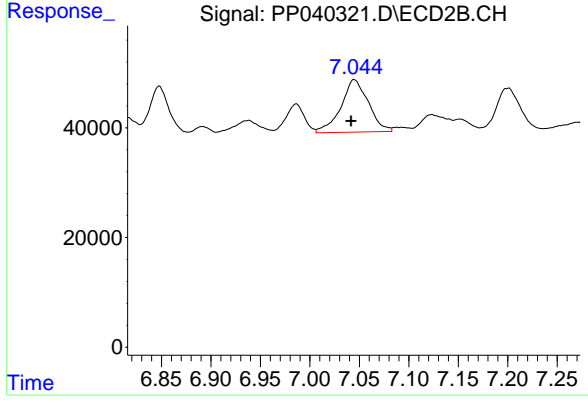
Instrument :
 ECD_P
 ClientSampleId :



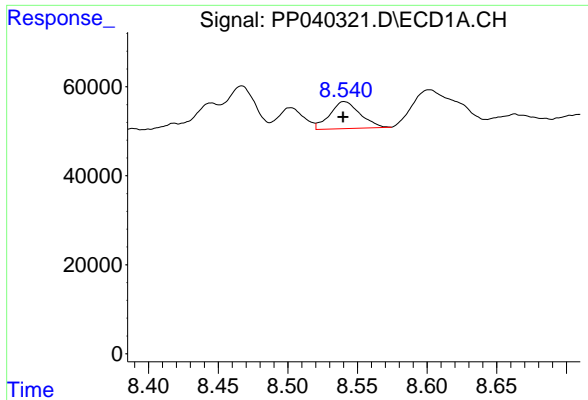
#31 AR-1260-1
 R.T.: 6.848 min
 Delta R.T.: 0.003 min
 Response: 127775
 Conc: 127.57 ng/ml



#32 AR-1260-2
 R.T.: 8.176 min
 Delta R.T.: 0.001 min
 Response: 253674
 Conc: 185.60 ng/ml

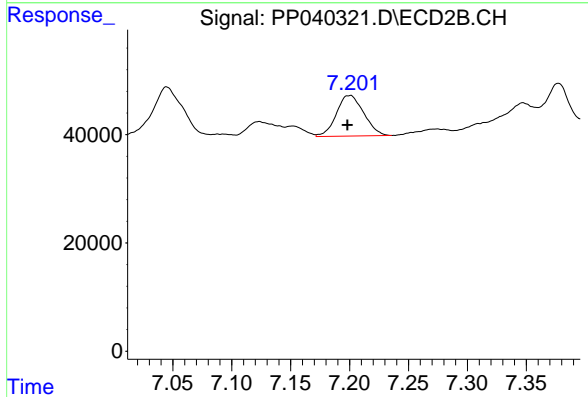


#32 AR-1260-2
 R.T.: 7.045 min
 Delta R.T.: 0.003 min
 Response: 185243
 Conc: 156.44 ng/ml

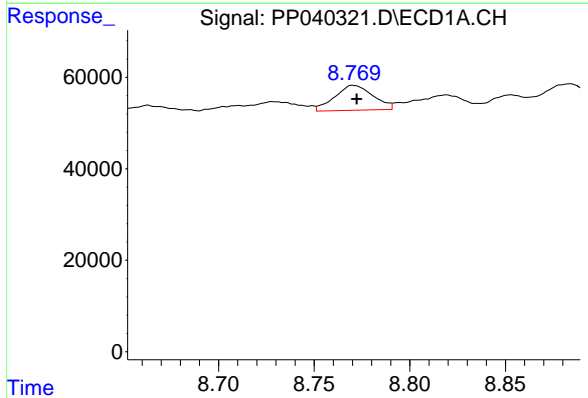


#33 AR-1260-3
 R.T.: 8.541 min
 Delta R.T.: 0.000 min
 Response: 91603
 Conc: 100.52 ng/ml

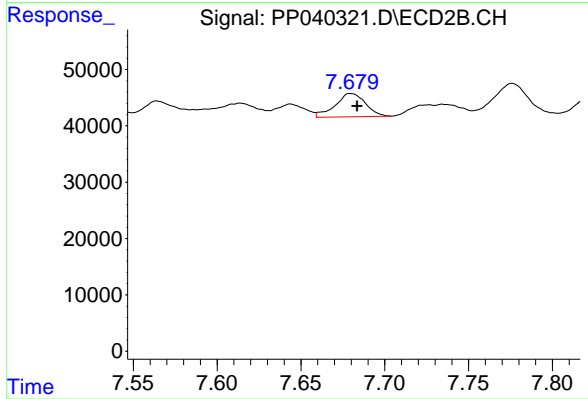
Instrument :
 ECD_P
 ClientSampled :



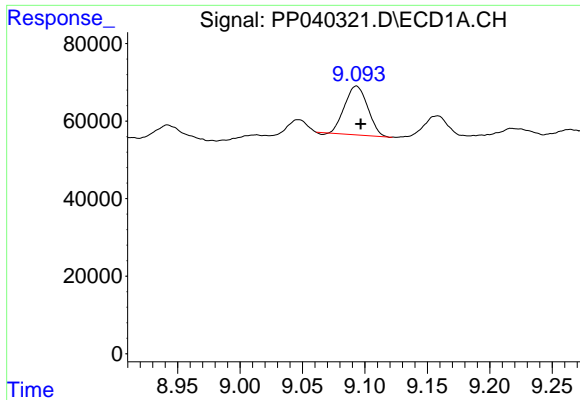
#33 AR-1260-3
 R.T.: 7.200 min
 Delta R.T.: 0.002 min
 Response: 121836
 Conc: 103.12 ng/ml



#34 AR-1260-4
 R.T.: 8.771 min
 Delta R.T.: -0.002 min
 Response: 75907
 Conc: 71.91 ng/ml



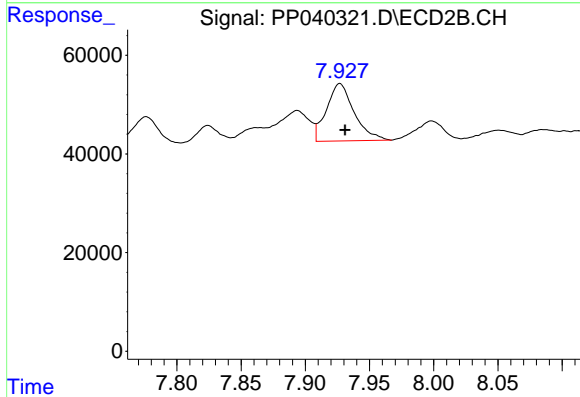
#34 AR-1260-4
 R.T.: 7.680 min
 Delta R.T.: -0.004 min
 Response: 51934
 Conc: 59.09 ng/ml



#35 AR-1260-5

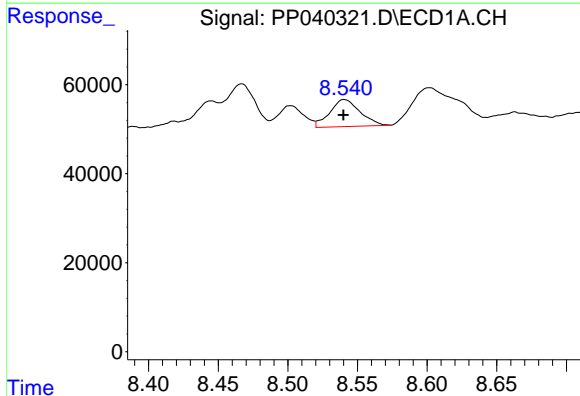
R.T.: 9.093 min
 Delta R.T.: -0.003 min
 Response: 161131
 Conc: 77.81 ng/ml

Instrument :
 ECD_P
 ClientSampleId :



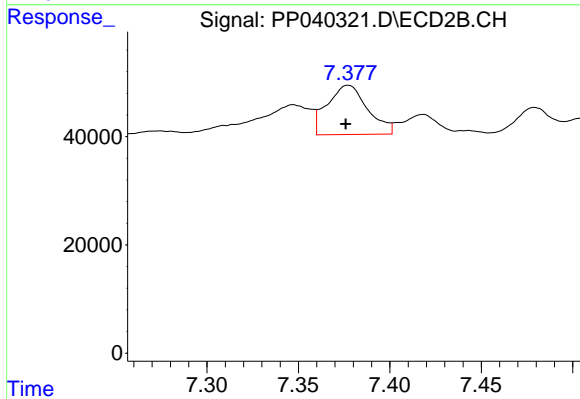
#35 AR-1260-5

R.T.: 7.927 min
 Delta R.T.: -0.004 min
 Response: 174633
 Conc: 85.45 ng/ml



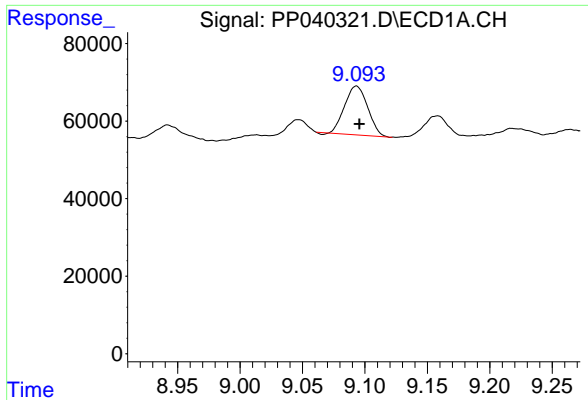
#36 AR-1262-1

R.T.: 8.541 min
 Delta R.T.: 0.000 min
 Response: 91603
 Conc: 67.17 ng/ml



#36 AR-1262-1

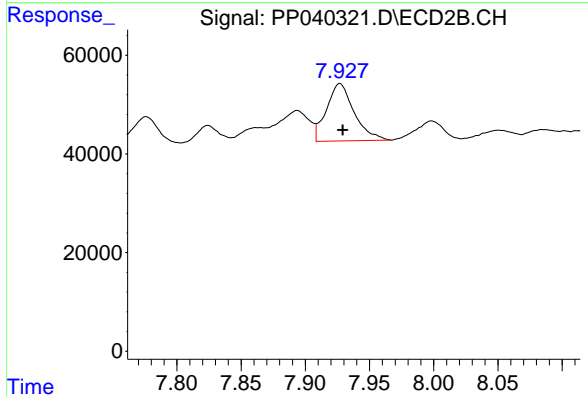
R.T.: 7.377 min
 Delta R.T.: 0.001 min
 Response: 139892
 Conc: 199.14 ng/ml



#37 AR-1262-2

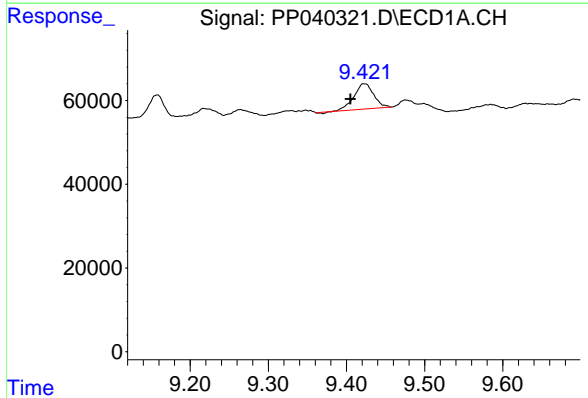
R.T.: 9.093 min
 Delta R.T.: -0.002 min
 Response: 161131
 Conc: 64.98 ng/ml

Instrument :
 ECD_P
 ClientSampleId :



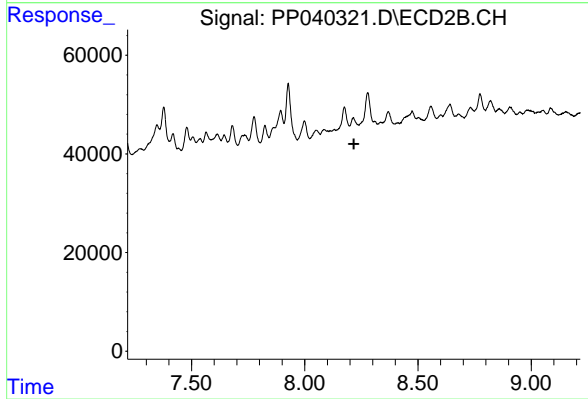
#37 AR-1262-2

R.T.: 7.927 min
 Delta R.T.: -0.002 min
 Response: 174633
 Conc: 77.60 ng/ml



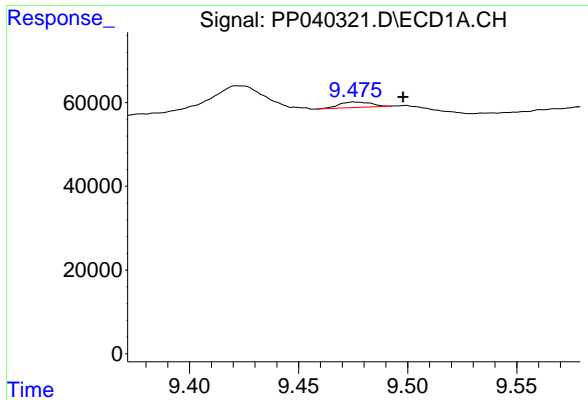
#38 AR-1262-3

R.T.: 9.423 min
 Delta R.T.: 0.018 min
 Response: 106016
 Conc: 92.18 ng/ml



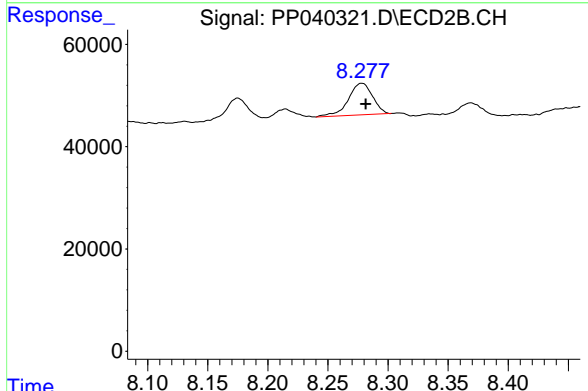
#38 AR-1262-3

R.T.: 8.215 min
 Delta R.T.: -0.002 min
 Response: -2819
 Conc: N.D.

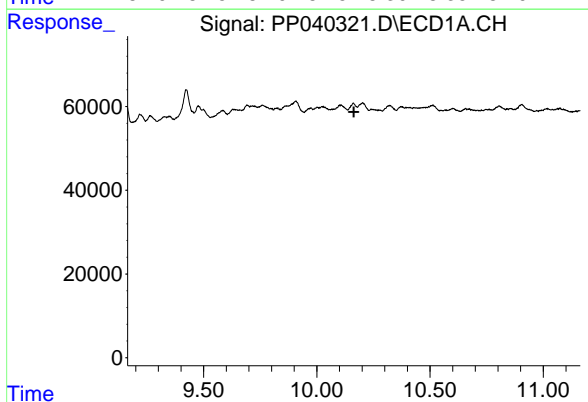


#39 AR-1262-4
 R.T.: 9.476 min
 Delta R.T.: -0.022 min
 Response: 13419
 Conc: 16.42 ng/ml

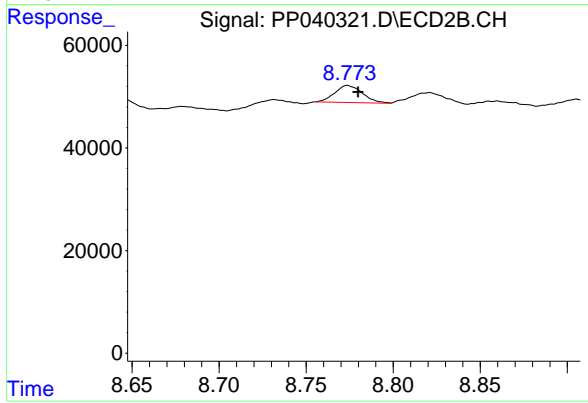
Instrument :
 ECD_P
 ClientSampled :



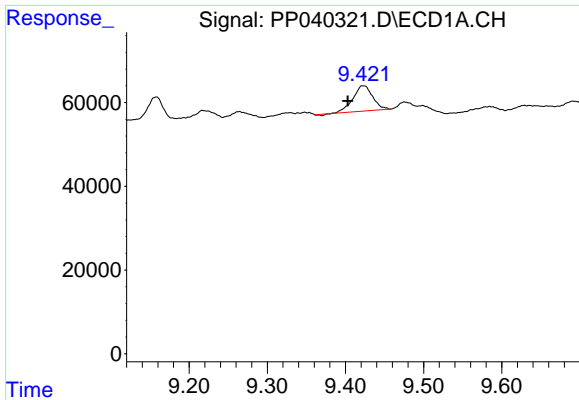
#39 AR-1262-4
 R.T.: 8.278 min
 Delta R.T.: -0.003 min
 Response: 86328
 Conc: 48.70 ng/ml



#40 AR-1262-5
 R.T.: 0.000 min
 Exp R.T. : 10.164 min
 Response: 0
 Conc: N.D.



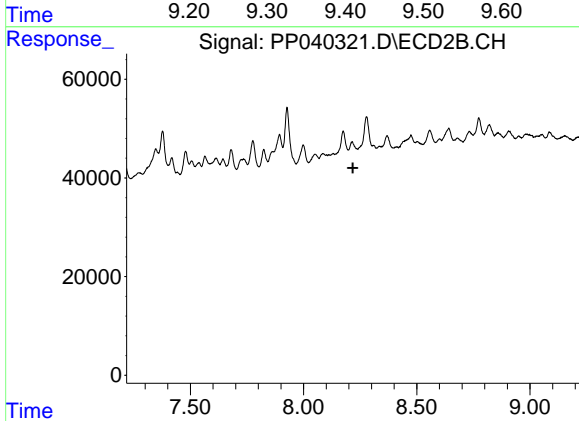
#40 AR-1262-5
 R.T.: 8.774 min
 Delta R.T.: -0.006 min
 Response: 36984
 Conc: 40.84 ng/ml



#41 AR-1268-1

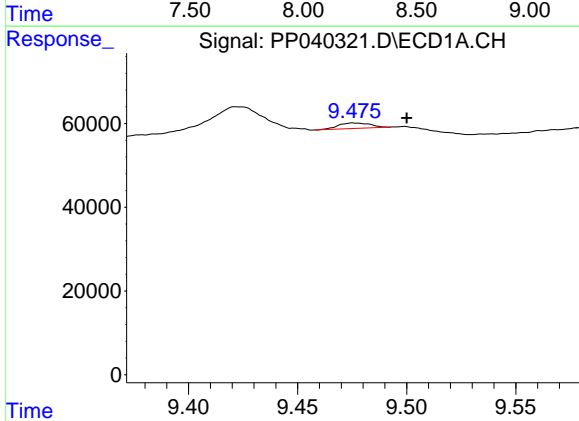
R.T.: 9.423 min
 Delta R.T.: 0.020 min
 Response: 106016
 Conc: 35.90 ng/ml

Instrument :
 ECD_P
 ClientSampleId :



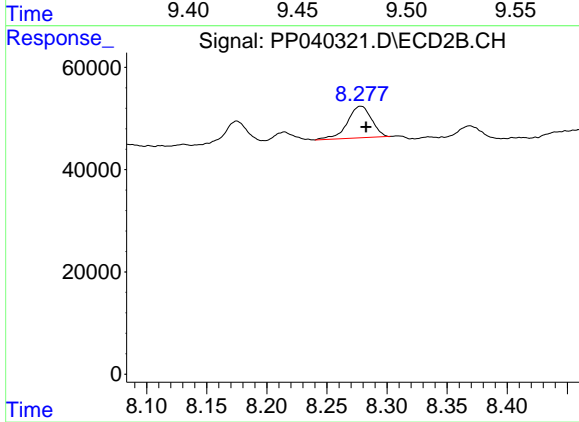
#41 AR-1268-1

R.T.: 8.215 min
 Delta R.T.: -0.003 min
 Response: -2819
 Conc: N.D.



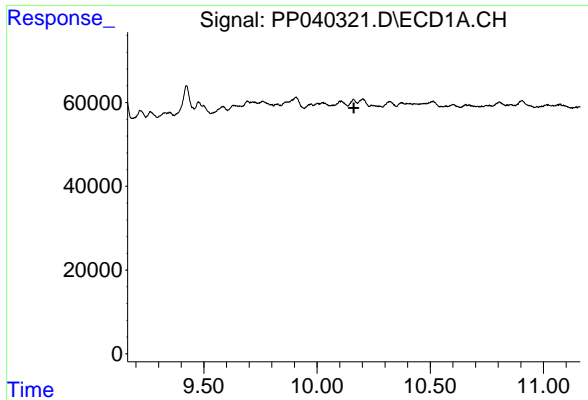
#42 AR-1268-2

R.T.: 9.476 min
 Delta R.T.: -0.024 min
 Response: 13419
 Conc: 4.75 ng/ml



#42 AR-1268-2

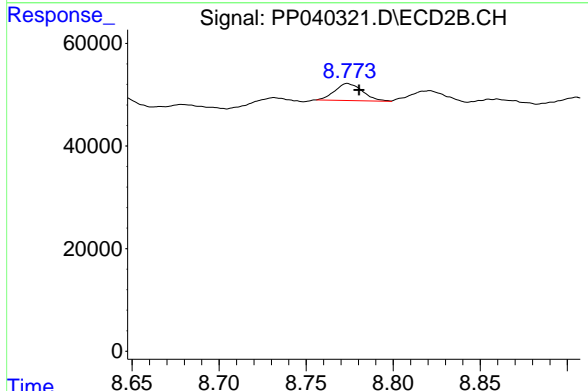
R.T.: 8.278 min
 Delta R.T.: -0.004 min
 Response: 86328
 Conc: 34.48 ng/ml



#44 AR-1268-4

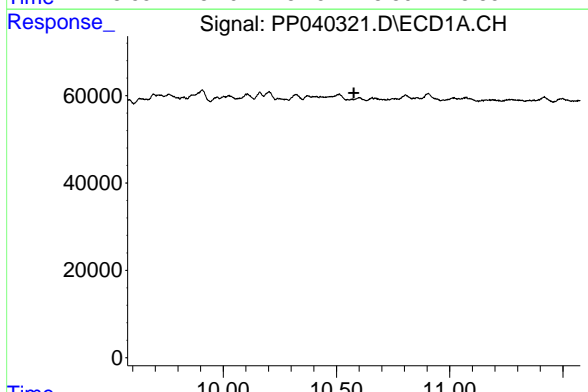
R.T.: 0.000 min
 Exp R.T. : 10.163 min
 Response: 0
 Conc: N.D.

Instrument :
 ECD_P
 ClientSampleId :



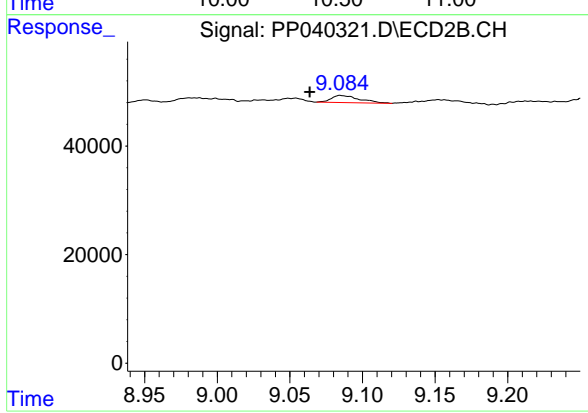
#44 AR-1268-4

R.T.: 8.774 min
 Delta R.T.: -0.007 min
 Response: 36984
 Conc: 37.30 ng/ml



#45 AR-1268-5

R.T.: 0.000 min
 Exp R.T. : 10.577 min
 Response: 0
 Conc: N.D.



#45 AR-1268-5

R.T.: 9.085 min
 Delta R.T.: 0.021 min
 Response: 17575
 Conc: 2.47 ng/ml