

Data Path : Z:\pestpcbsrv\HPCHEM1\ECD\_P\Data\PP102422\  
 Data File : PP052623.D  
 Signal(s) : Signal #1: ECD1A.ch Signal #2: ECD2B.ch  
 Acq On : 24 Oct 2022 13:53  
 Operator : YP\AJ  
 Sample : N4955-01  
 Misc : AR1221 LOD 25 PPB  
 ALS Vial : 15 Sample Multiplier: 1

Instrument :  
 ECD\_P  
 ClientSampleId :  
 LOD-MDL-SOIL-01-QT4-2022

Integration File signal 1: autoint1.e  
 Integration File signal 2: autoint2.e  
 Quant Time: Oct 24 22:59:06 2022  
 Quant Method : Z:\pestpcbsrv\HPCHEM1\ECD\_P\methods\PP102122.M  
 Quant Title : GC EXTRACTABLES  
 QLast Update : Sun Oct 23 15:44:19 2022  
 Response via : Initial Calibration  
 Integrator: ChemStation

Volume Inj. : 2 µl  
 Signal #1 Phase : ZB-MR1 Signal #2 Phase: ZB-MR2  
 Signal #1 Info : 30Mx0.32mmx 0.50µ Signal #2 Info : 30M x 0.32mm x 0.25µm

Compound	RT#1	RT#2	Resp#1	Resp#2	ng/ml	ng/ml
-----						
System Monitoring Compounds						
1) SA Tetrachlo...	4.422	3.673	27090661	28494625	16.374	21.386 #
2) SA Decachlor...	10.234	8.760	35979699	28494038	22.453	22.925
Target Compounds						
3) L1 AR-1016-1	5.600	4.796f	97405	136419	2.220	2.966 #
4) L1 AR-1016-2	5.621	4.796	104183	136419	1.650	2.179 #
5) L1 AR-1016-3	5.674	0.000	173430	0	4.296	N.D. #
6) L1 AR-1016-4	5.779	0.000	83283	0	2.416	N.D. #
7) L1 AR-1016-5	6.073	0.000	26802	0	0.701	N.D. #
8) L2 AR-1221-1	4.632	3.889	534304	458442	24.394	26.053
9) L2 AR-1221-2	4.727	3.977	583241	738055	36.366	55.428 #
10) L2 AR-1221-3	4.794	4.053	967778	1044630	19.836	25.193 #
11) L3 AR-1232-1	4.794	4.053	967778	1044630	26.068	32.946 #
12) L3 AR-1232-2	5.325	4.796	86078	136419	4.249	4.447
13) L3 AR-1232-3	5.621	0.000	104183	0	3.428	N.D. #
14) L3 AR-1232-4	5.779	0.000	83283	0	5.218	N.D. #
15) L3 AR-1232-5	5.869	0.000	30812	0	2.276	N.D. #
16) L4 AR-1242-1	5.600	4.796f	97405	136419	2.786	3.540 #
17) L4 AR-1242-2	5.621	4.796	104183	136419	1.947	2.603 #
18) L4 AR-1242-3	5.674	0.000	173430	0	5.042	N.D. #
19) L4 AR-1242-4	5.779	0.000	83283	0	2.911	N.D. #
20) L4 AR-1242-5	6.520	0.000	106220	0	2.944	N.D. #
21) L5 AR-1248-1	5.600	4.796f	97405	136419	3.357	4.807 #
22) L5 AR-1248-2	5.869	0.000	30812	0	0.727	N.D. #
23) L5 AR-1248-3	6.073	0.000	26802	0	0.519	N.D. #
24) L5 AR-1248-4	6.478	0.000	134223	0	2.436	N.D. #
25) L5 AR-1248-5	6.520	0.000	106220	0	1.869	N.D. #
26) L6 AR-1254-1	6.456	0.000	104760	0	1.679	N.D. #
27) L6 AR-1254-2	6.677	0.000	75484	0	0.786	N.D. #
28) L6 AR-1254-3	7.045	0.000	568295	0	6.078	N.D. #
29) L6 AR-1254-4	7.324	0.000	46124	0	0.747	N.D. #
30) L6 AR-1254-5	7.745	0.000	94417	0	1.245	N.D. #
31) L7 AR-1260-1	7.207	0.000	35956	0	0.472	N.D. #
32) L7 AR-1260-2	7.476	6.455	132976	437328	1.589	5.458 #
33) L7 AR-1260-3	7.841f	0.000	70711	0	1.097	N.D. #
34) L7 AR-1260-4	8.030f	0.000	47853	0	0.634	N.D. #
35) L7 AR-1260-5	8.368	0.000	88090	0	0.662	N.D. #
36) L8 AR-1262-1	7.841f	0.000	70711	0	0.722	N.D. #
37) L8 AR-1262-2	8.368	0.000	88090	0	0.578	N.D. #
38) L8 AR-1262-3	8.677f	0.000	256	0	0.002	N.D. #
39) L8 AR-1262-4	8.765f	0.000	67377	0	1.075	N.D. #
40) L8 AR-1262-5	9.487f	0.000	413611	0	6.452	N.D. #
41) L9 AR-1268-1	8.677f	0.000	256	0	0.001	N.D. #

Data Path : Z:\pestpcbsrv\HPCHEM1\ECD\_P\Data\PP102422\  
 Data File : PP052623.D  
 Signal(s) : Signal #1: ECD1A.ch Signal #2: ECD2B.ch  
 Acq On : 24 Oct 2022 13:53  
 Operator : YP\AJ  
 Sample : N4955-01  
 Misc : AR1221 LOD 25 PPB  
 ALS Vial : 15 Sample Multiplier: 1

Instrument :  
 ECD\_P  
 ClientSampleId :  
 LOD-MDL-SOIL-01-QT4-2022

Integration File signal 1: autoint1.e  
 Integration File signal 2: autoint2.e  
 Quant Time: Oct 24 22:59:06 2022  
 Quant Method : Z:\pestpcbsrv\HPCHEM1\ECD\_P\methods\PP102122.M  
 Quant Title : GC EXTRACTABLES  
 QLast Update : Sun Oct 23 15:44:19 2022  
 Response via : Initial Calibration  
 Integrator: ChemStation

Volume Inj. : 2 µl  
 Signal #1 Phase : ZB-MR1 Signal #2 Phase: ZB-MR2  
 Signal #1 Info : 30Mx0.32mmx 0.50µ Signal #2 Info : 30M x 0.32mm x 0.25µm

	Compound	RT#1	RT#2	Resp#1	Resp#2	ng/ml	ng/ml
42)	L9 AR-1268-2	8.765f	0.000	67377	0	0.345	N.D. #
43)	L9 AR-1268-3	9.033	0.000	137401	0	0.765	N.D. #
44)	L9 AR-1268-4	9.487f	0.000	413611	0	5.293	N.D. #
45)	L9 AR-1268-5	9.888	8.499	309251	188410	0.535	0.426

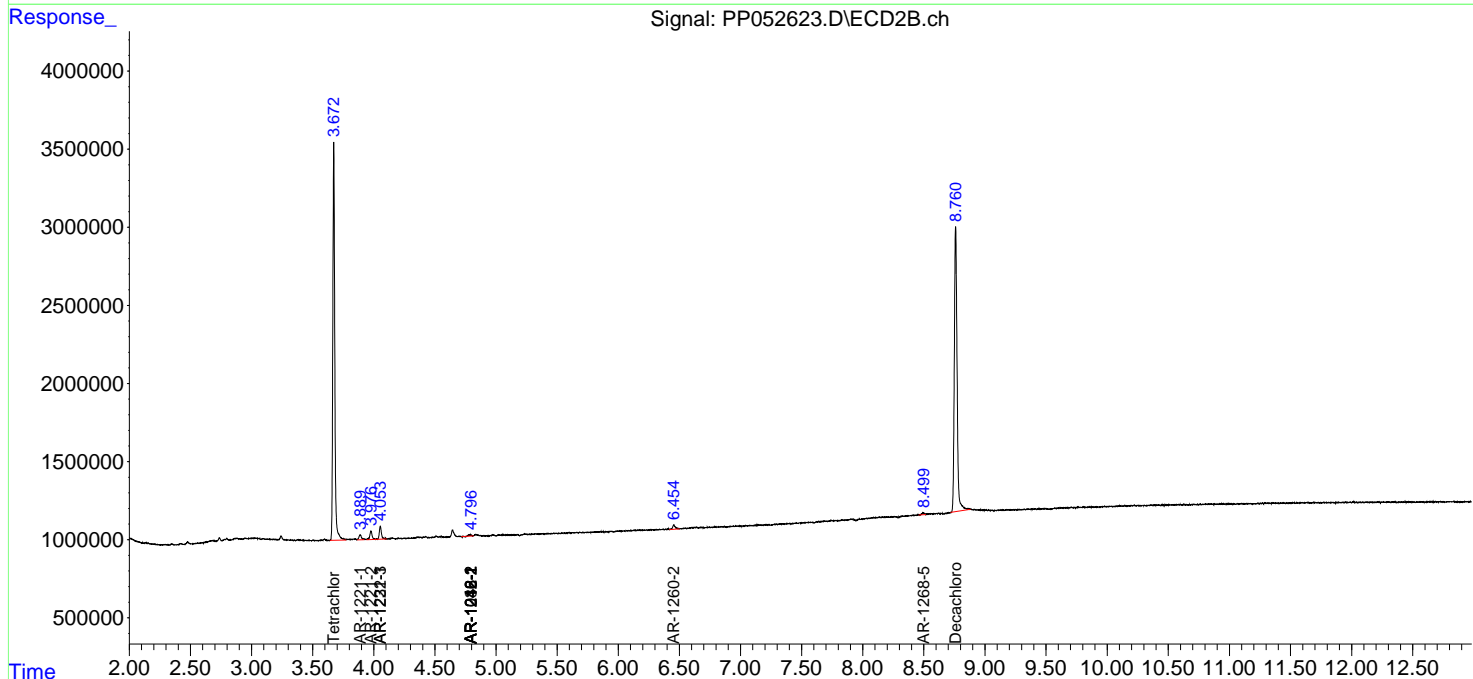
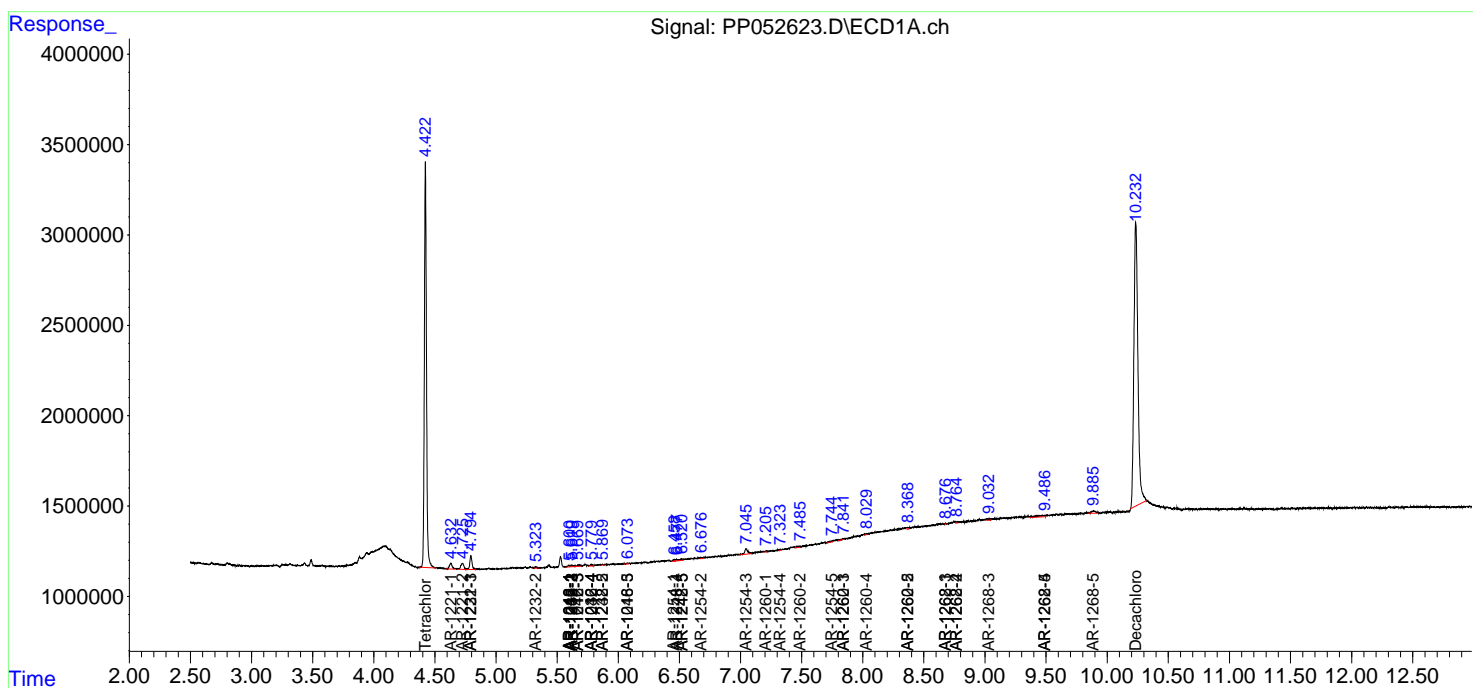
(f)=RT Delta > 1/2 Window (#)=Amounts differ by > 25% (m)=manual int.

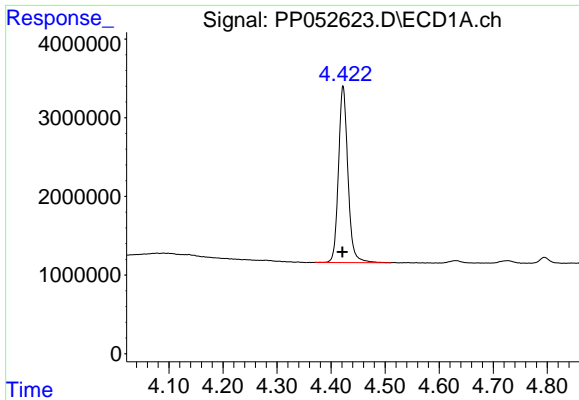
Data Path : Z:\pestpcbsrv\HPCHEM1\ECD\_P\Data\PP102422\  
 Data File : PP052623.D  
 Signal(s) : Signal #1: ECD1A.ch Signal #2: ECD2B.ch  
 Acq On : 24 Oct 2022 13:53  
 Operator : YP\AJ  
 Sample : N4955-01  
 Misc : AR1221 LOD 25 PPB  
 ALS Vial : 15 Sample Multiplier: 1

Instrument :  
 ECD\_P  
 ClientSampleId :  
 LOD-MDL-SOIL-01-QT4-2022

Integration File signal 1: autoint1.e  
 Integration File signal 2: autoint2.e  
 Quant Time: Oct 24 22:59:06 2022  
 Quant Method : Z:\pestpcbsrv\HPCHEM1\ECD\_P\methods\PP102122.M  
 Quant Title : GC EXTRACTABLES  
 QLast Update : Sun Oct 23 15:44:19 2022  
 Response via : Initial Calibration  
 Integrator: ChemStation

Volume Inj. : 2 µl  
 Signal #1 Phase : ZB-MR1 Signal #2 Phase: ZB-MR2  
 Signal #1 Info : 30Mx0.32mmx 0.50µ Signal #2 Info : 30M x 0.32mm x 0.25µm

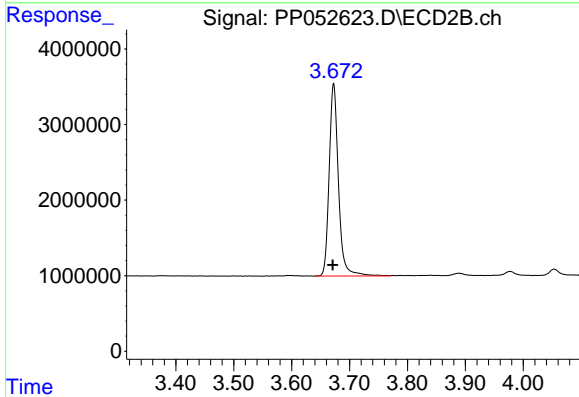




#1 Tetrachloro-m-xylene

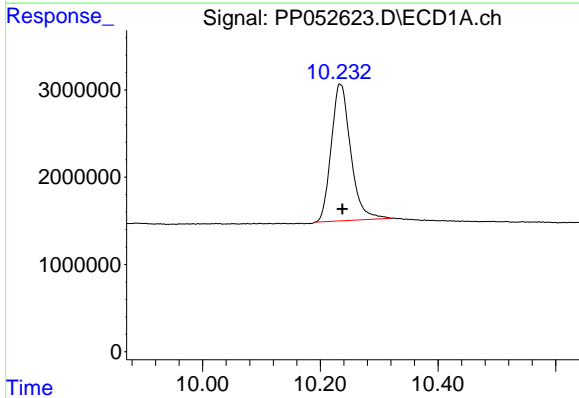
R.T.: 4.422 min  
 Delta R.T.: 0.001 min  
 Response: 27090661  
 Conc: 16.37 ng/ml

Instrument :  
 ECD\_P  
 ClientSampleId :  
 LOD-MDL-SOIL-01-QT4-2022



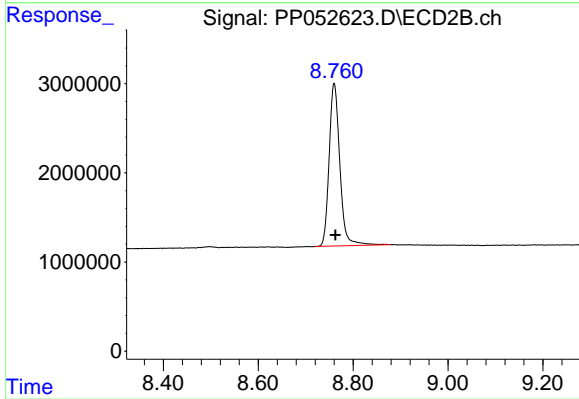
#1 Tetrachloro-m-xylene

R.T.: 3.673 min  
 Delta R.T.: 0.002 min  
 Response: 28494625  
 Conc: 21.39 ng/ml



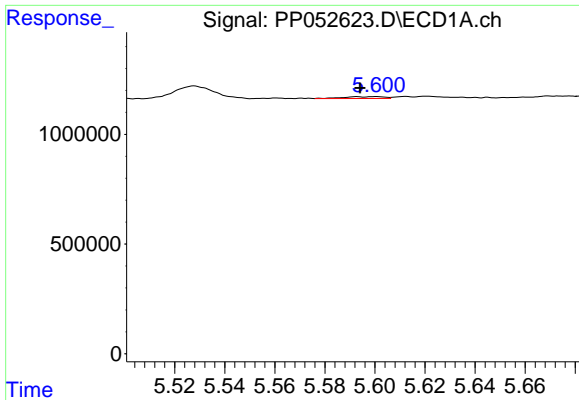
#2 Decachlorobiphenyl

R.T.: 10.234 min  
 Delta R.T.: -0.003 min  
 Response: 35979699  
 Conc: 22.45 ng/ml



#2 Decachlorobiphenyl

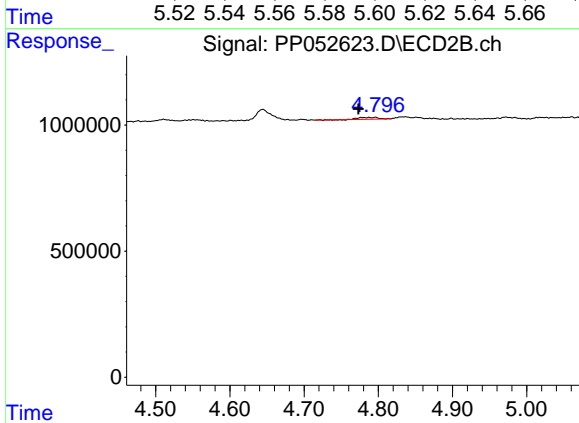
R.T.: 8.760 min  
 Delta R.T.: -0.002 min  
 Response: 28494038  
 Conc: 22.93 ng/ml



#3 AR-1016-1

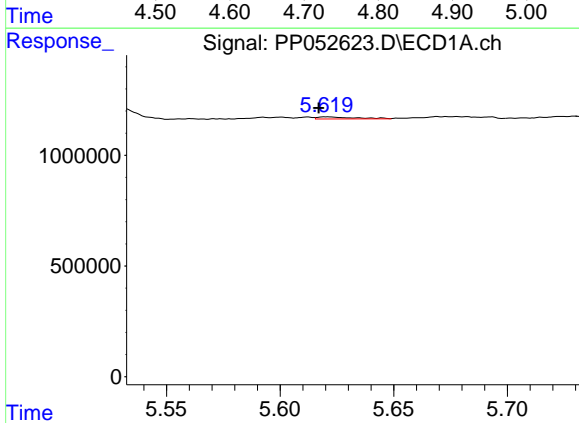
R.T.: 5.600 min  
 Delta R.T.: 0.006 min  
 Response: 97405  
 Conc: 2.22 ng/ml

Instrument :  
 ECD\_P  
 ClientSampleId :  
 LOD-MDL-SOIL-01-QT4-2022



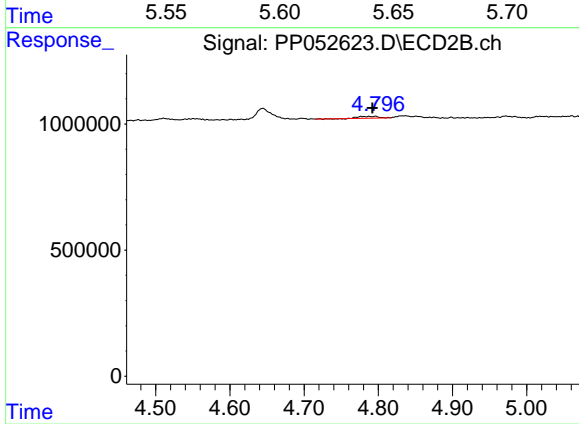
#3 AR-1016-1

R.T.: 4.796 min  
 Delta R.T.: 0.023 min  
 Response: 136419  
 Conc: 2.97 ng/ml



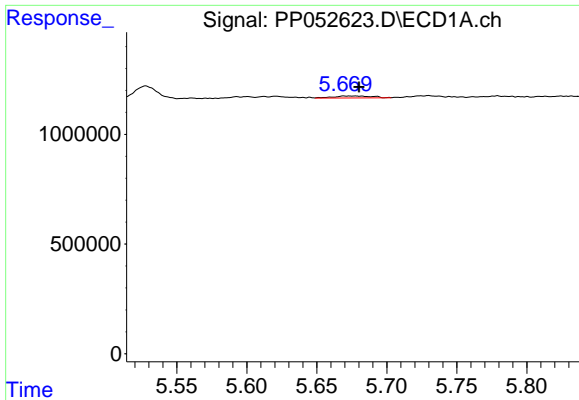
#4 AR-1016-2

R.T.: 5.621 min  
 Delta R.T.: 0.004 min  
 Response: 104183  
 Conc: 1.65 ng/ml



#4 AR-1016-2

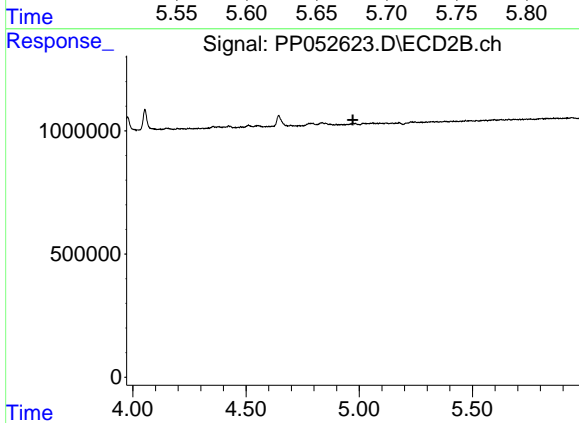
R.T.: 4.796 min  
 Delta R.T.: 0.004 min  
 Response: 136419  
 Conc: 2.18 ng/ml



#5 AR-1016-3

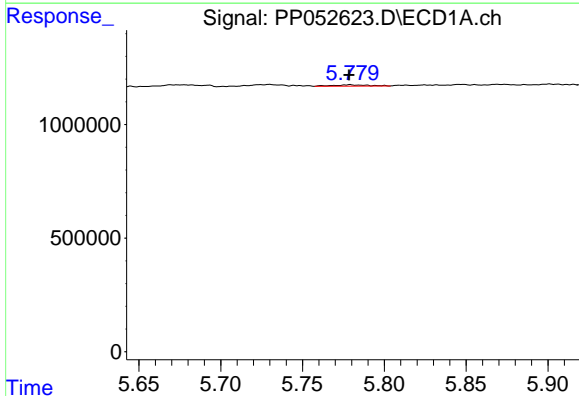
R.T.: 5.674 min  
 Delta R.T.: -0.006 min  
 Response: 173430  
 Conc: 4.30 ng/ml

Instrument :  
 ECD\_P  
 ClientSampleId :  
 LOD-MDL-SOIL-01-QT4-2022



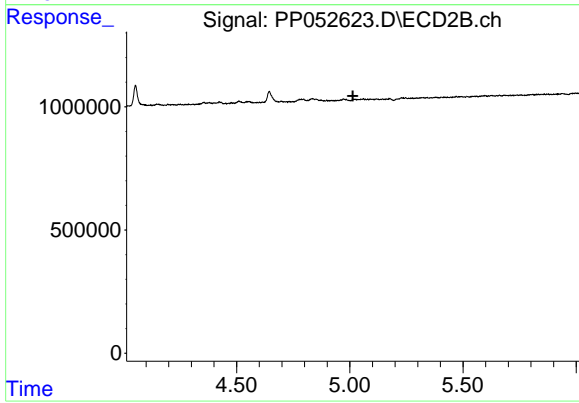
#5 AR-1016-3

R.T.: 0.000 min  
 Exp R.T. : 4.972 min  
 Response: 0  
 Conc: N.D.



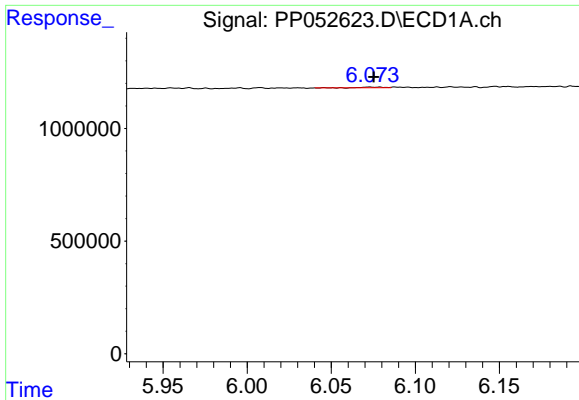
#6 AR-1016-4

R.T.: 5.779 min  
 Delta R.T.: 0.000 min  
 Response: 83283  
 Conc: 2.42 ng/ml



#6 AR-1016-4

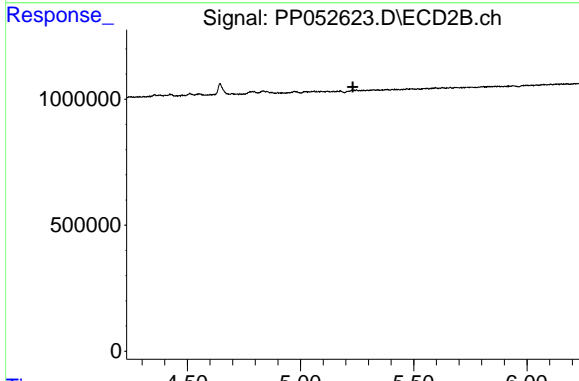
R.T.: 0.000 min  
 Exp R.T. : 5.014 min  
 Response: 0  
 Conc: N.D.



#7 AR-1016-5

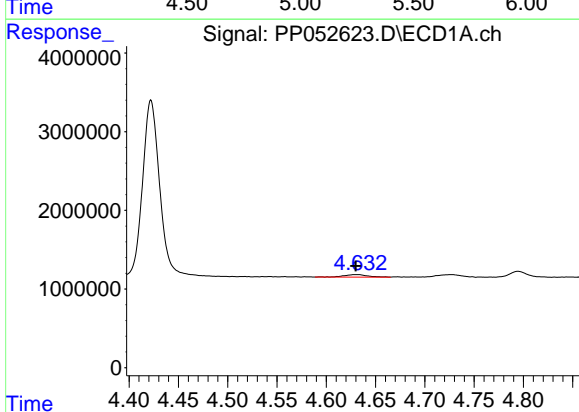
R.T.: 6.073 min  
 Delta R.T.: -0.003 min  
 Response: 26802  
 Conc: 0.70 ng/ml

Instrument :  
 ECD\_P  
 ClientSampleId :  
 LOD-MDL-SOIL-01-QT4-2022



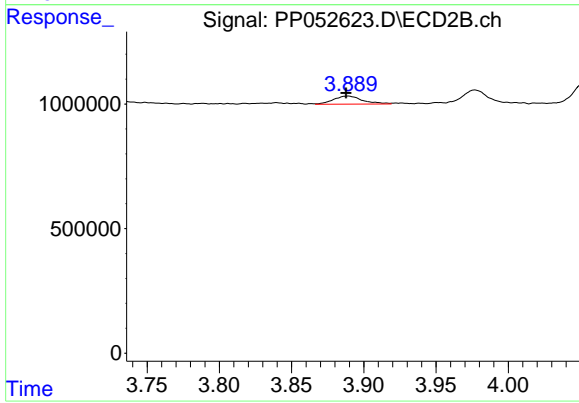
#7 AR-1016-5

R.T.: 0.000 min  
 Exp R.T. : 5.231 min  
 Response: 0  
 Conc: N.D.



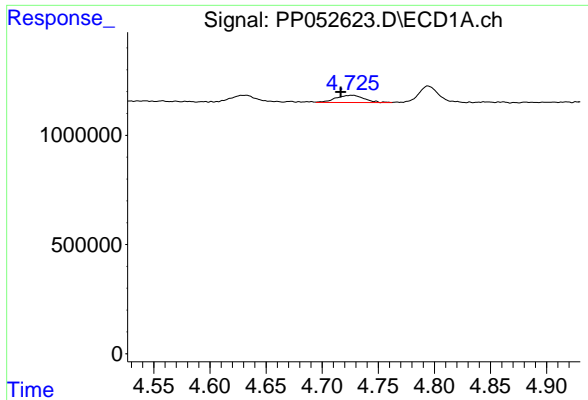
#8 AR-1221-1

R.T.: 4.632 min  
 Delta R.T.: 0.002 min  
 Response: 534304  
 Conc: 24.39 ng/ml



#8 AR-1221-1

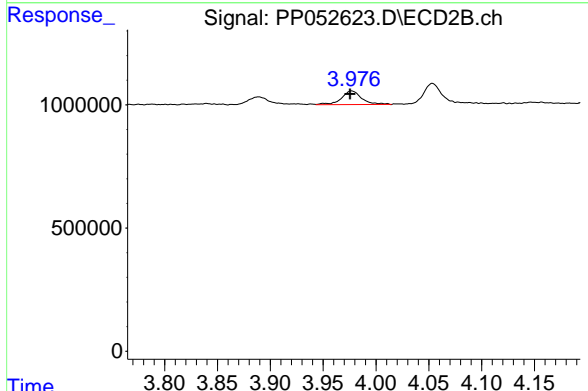
R.T.: 3.889 min  
 Delta R.T.: 0.000 min  
 Response: 458442  
 Conc: 26.05 ng/ml



#9 AR-1221-2

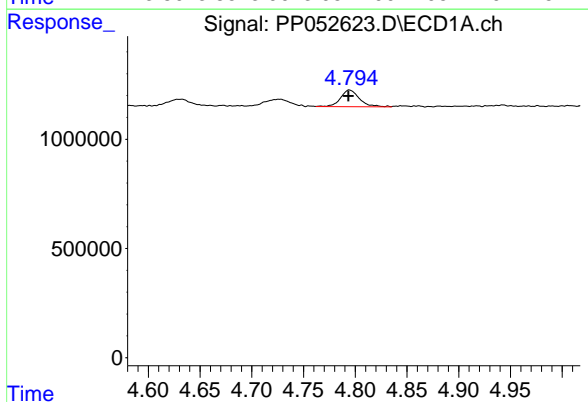
R.T.: 4.727 min  
 Delta R.T.: 0.010 min  
 Response: 583241  
 Conc: 36.37 ng/ml

Instrument :  
 ECD\_P  
 ClientSampleId :  
 LOD-MDL-SOIL-01-QT4-2022



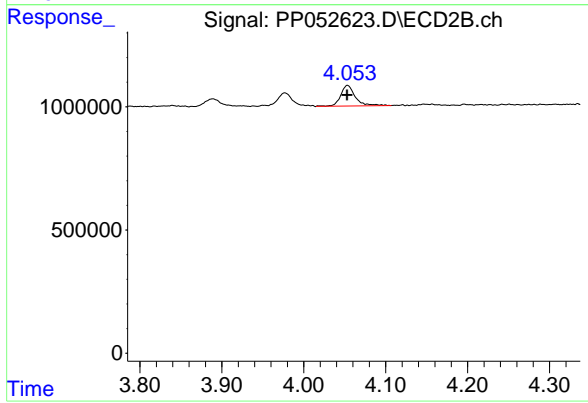
#9 AR-1221-2

R.T.: 3.977 min  
 Delta R.T.: 0.002 min  
 Response: 738055  
 Conc: 55.43 ng/ml



#10 AR-1221-3

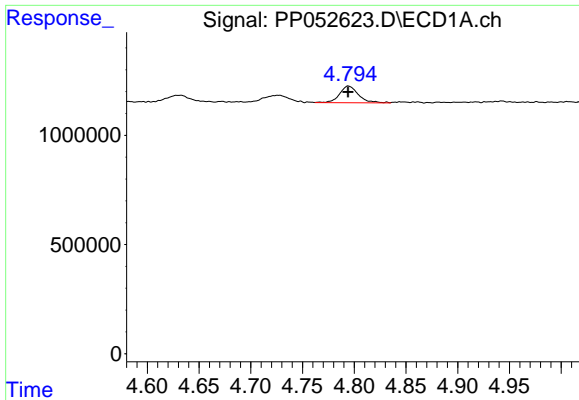
R.T.: 4.794 min  
 Delta R.T.: 0.001 min  
 Response: 967778  
 Conc: 19.84 ng/ml



#10 AR-1221-3

R.T.: 4.053 min  
 Delta R.T.: 0.000 min  
 Response: 1044630  
 Conc: 25.19 ng/ml

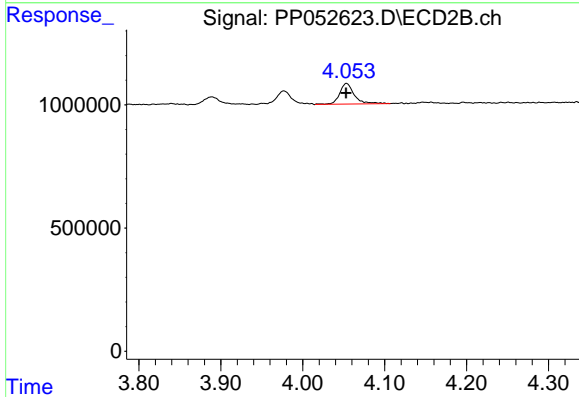




#11 AR-1232-1

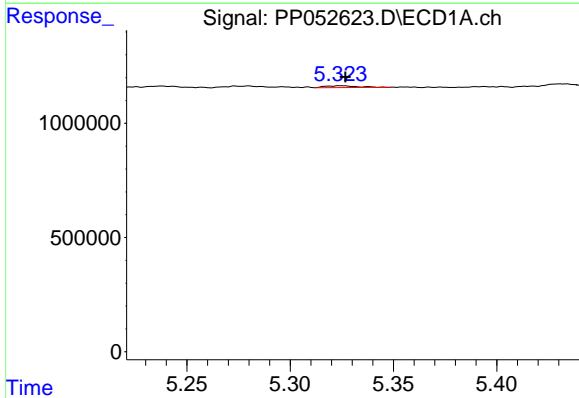
R.T.: 4.794 min  
 Delta R.T.: 0.000 min  
 Response: 967778  
 Conc: 26.07 ng/ml

Instrument :  
 ECD\_P  
 ClientSampleId :  
 LOD-MDL-SOIL-01-QT4-2022



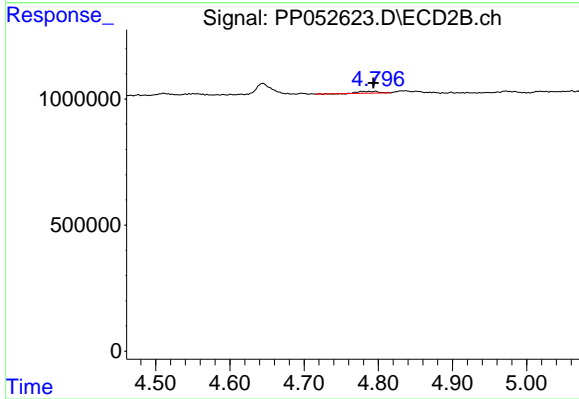
#11 AR-1232-1

R.T.: 4.053 min  
 Delta R.T.: 0.000 min  
 Response: 1044630  
 Conc: 32.95 ng/ml



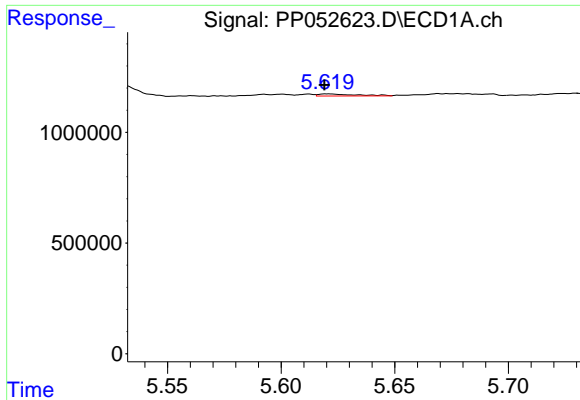
#12 AR-1232-2

R.T.: 5.325 min  
 Delta R.T.: -0.002 min  
 Response: 86078  
 Conc: 4.25 ng/ml



#12 AR-1232-2

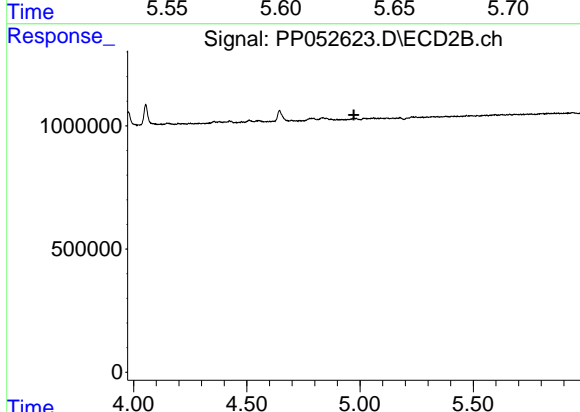
R.T.: 4.796 min  
 Delta R.T.: 0.003 min  
 Response: 136419  
 Conc: 4.45 ng/ml



#13 AR-1232-3

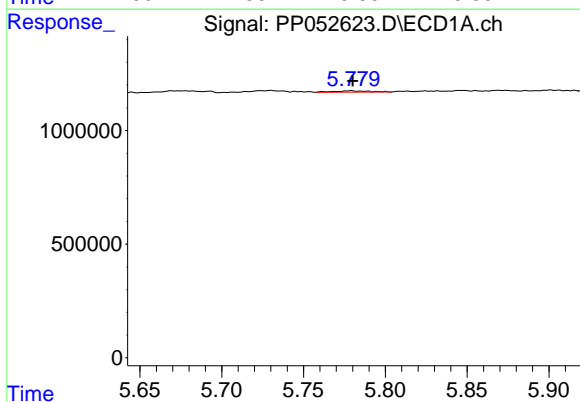
R.T.: 5.621 min  
 Delta R.T.: 0.002 min  
 Response: 104183  
 Conc: 3.43 ng/ml

Instrument :  
 ECD\_P  
 ClientSampleId :  
 LOD-MDL-SOIL-01-QT4-2022



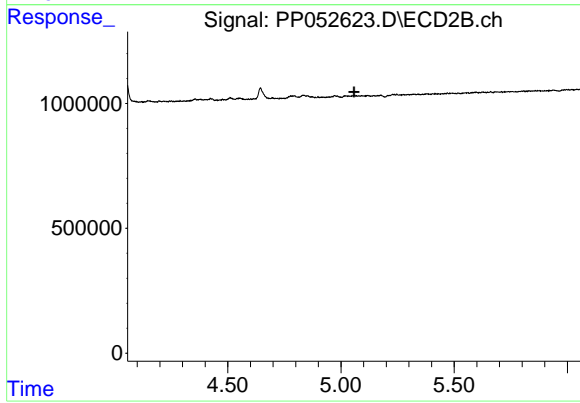
#13 AR-1232-3

R.T.: 0.000 min  
 Exp R.T. : 4.973 min  
 Response: 0  
 Conc: N.D.



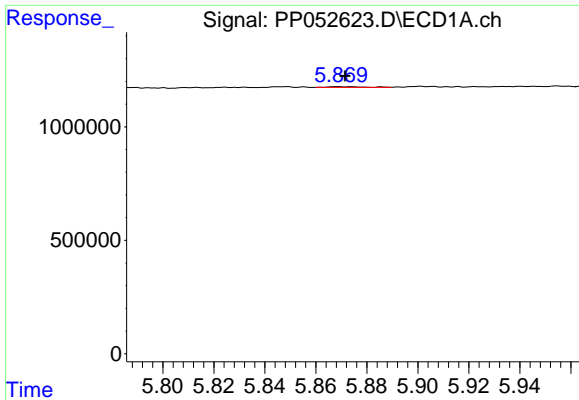
#14 AR-1232-4

R.T.: 5.779 min  
 Delta R.T.: -0.001 min  
 Response: 83283  
 Conc: 5.22 ng/ml



#14 AR-1232-4

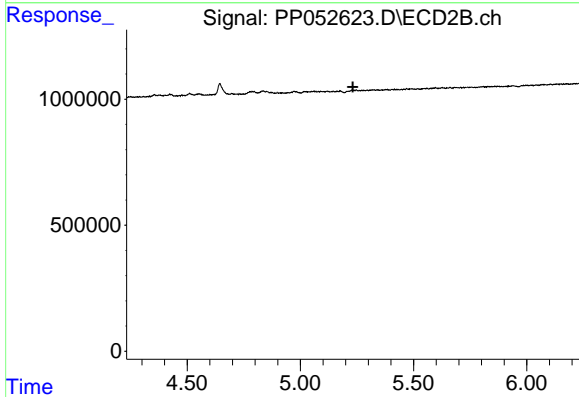
R.T.: 0.000 min  
 Exp R.T. : 5.057 min  
 Response: 0  
 Conc: N.D.



#15 AR-1232-5

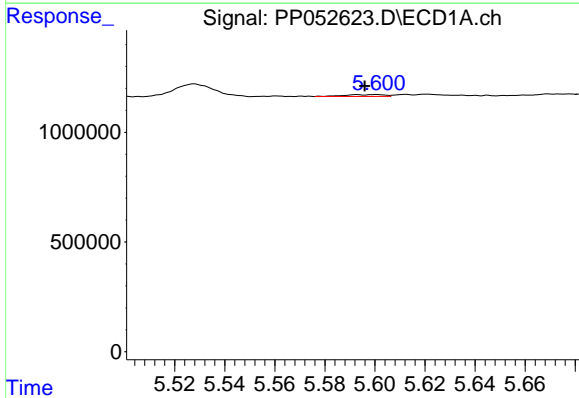
R.T.: 5.869 min  
 Delta R.T.: -0.003 min  
 Response: 30812  
 Conc: 2.28 ng/ml

Instrument :  
 ECD\_P  
 ClientSampleId :  
 LOD-MDL-SOIL-01-QT4-2022



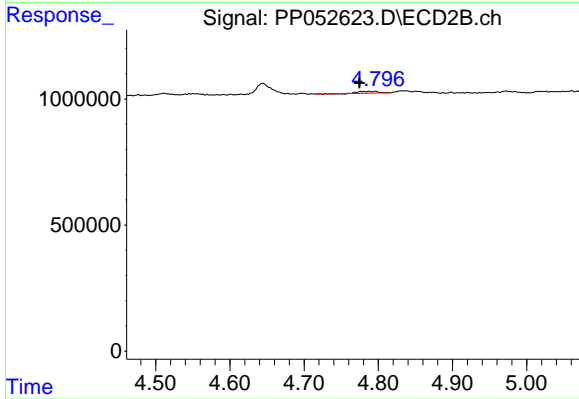
#15 AR-1232-5

R.T.: 0.000 min  
 Exp R.T. : 5.232 min  
 Response: 0  
 Conc: N.D.



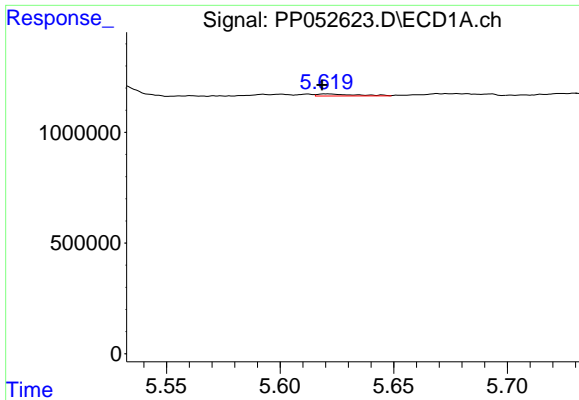
#16 AR-1242-1

R.T.: 5.600 min  
 Delta R.T.: 0.004 min  
 Response: 97405  
 Conc: 2.79 ng/ml



#16 AR-1242-1

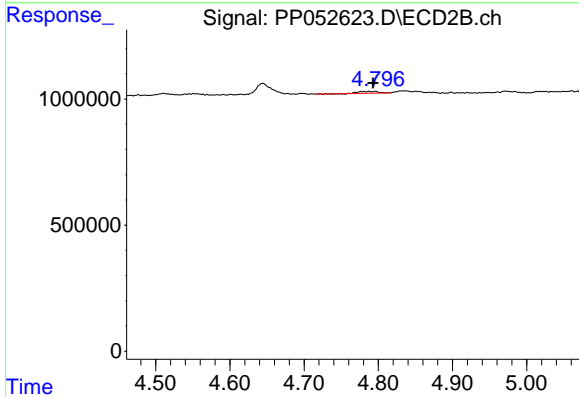
R.T.: 4.796 min  
 Delta R.T.: 0.022 min  
 Response: 136419  
 Conc: 3.54 ng/ml



#17 AR-1242-2

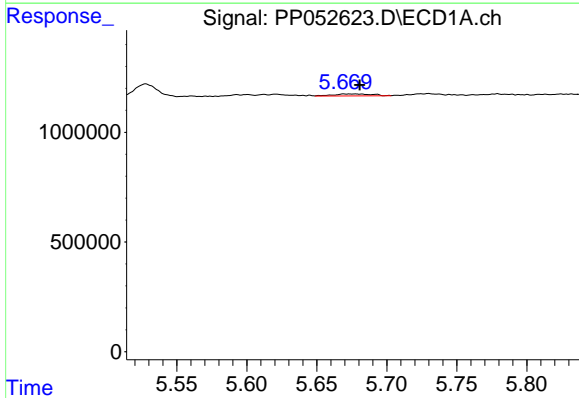
R.T.: 5.621 min  
 Delta R.T.: 0.002 min  
 Response: 104183  
 Conc: 1.95 ng/ml

Instrument :  
 ECD\_P  
 ClientSampleId :  
 LOD-MDL-SOIL-01-QT4-2022



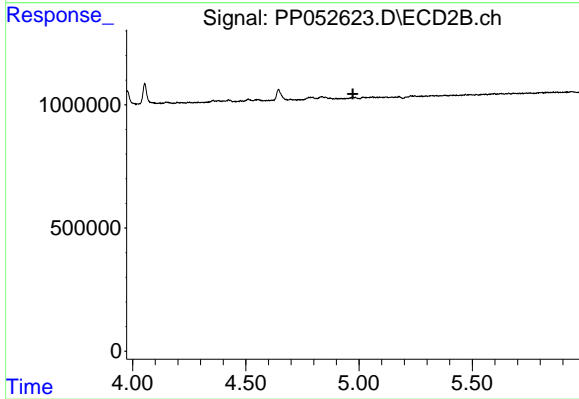
#17 AR-1242-2

R.T.: 4.796 min  
 Delta R.T.: 0.003 min  
 Response: 136419  
 Conc: 2.60 ng/ml



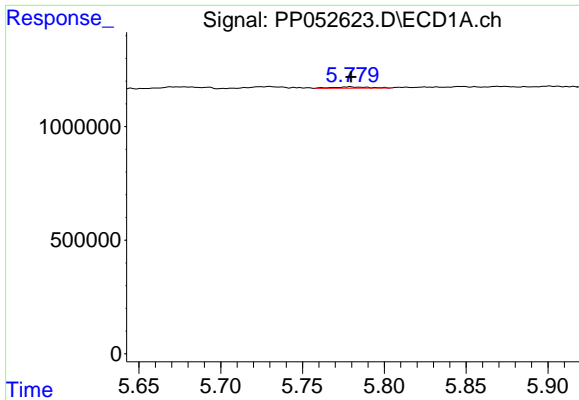
#18 AR-1242-3

R.T.: 5.674 min  
 Delta R.T.: -0.006 min  
 Response: 173430  
 Conc: 5.04 ng/ml



#18 AR-1242-3

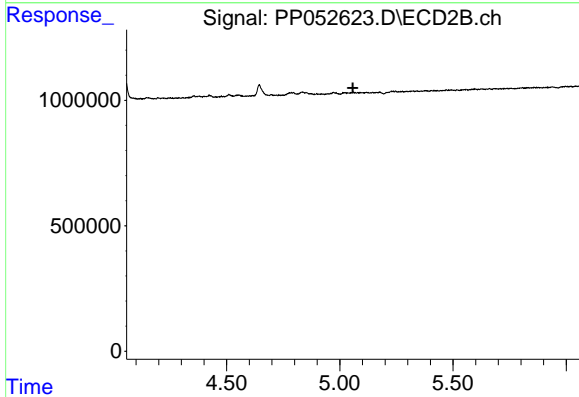
R.T.: 0.000 min  
 Exp R.T. : 4.973 min  
 Response: 0  
 Conc: N.D.



#19 AR-1242-4

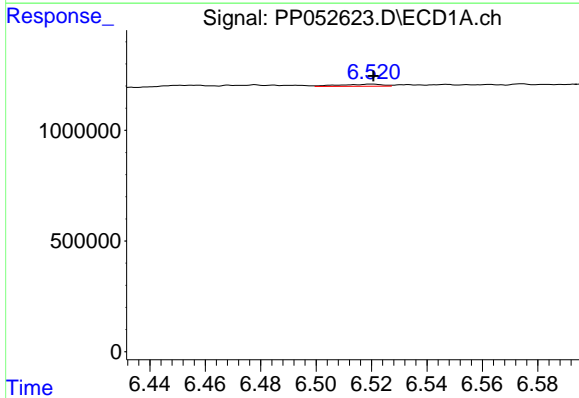
R.T.: 5.779 min  
 Delta R.T.: 0.000 min  
 Response: 83283  
 Conc: 2.91 ng/ml

Instrument :  
 ECD\_P  
 ClientSampleId :  
 LOD-MDL-SOIL-01-QT4-2022



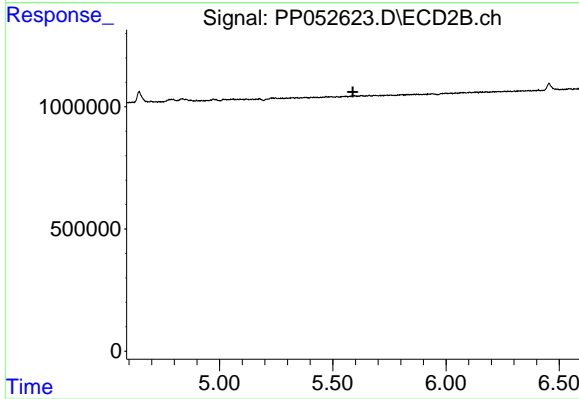
#19 AR-1242-4

R.T.: 0.000 min  
 Exp R.T. : 5.057 min  
 Response: 0  
 Conc: N.D.



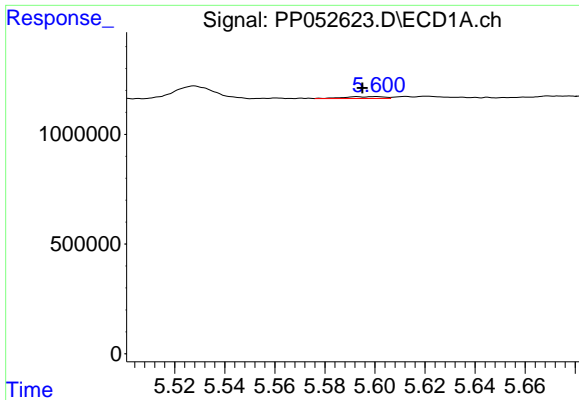
#20 AR-1242-5

R.T.: 6.520 min  
 Delta R.T.: 0.000 min  
 Response: 106220  
 Conc: 2.94 ng/ml



#20 AR-1242-5

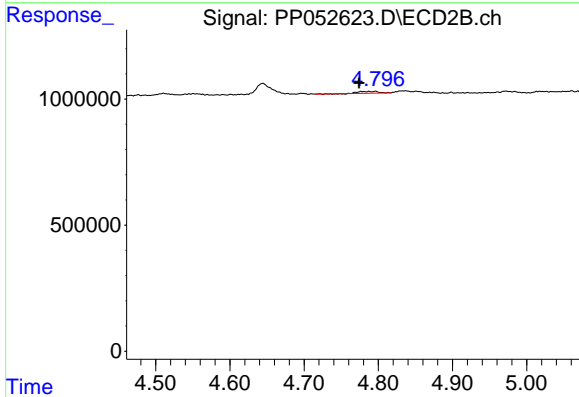
R.T.: 0.000 min  
 Exp R.T. : 5.589 min  
 Response: 0  
 Conc: N.D.



#21 AR-1248-1

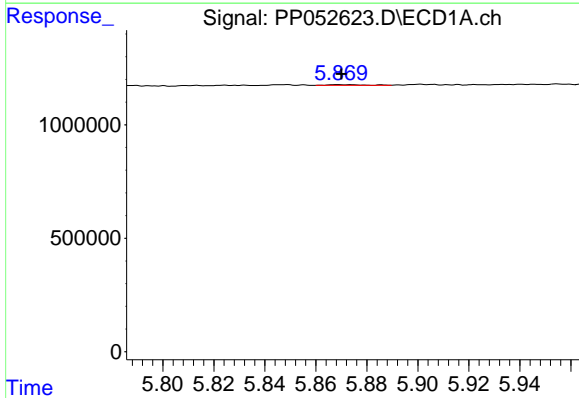
R.T.: 5.600 min  
 Delta R.T.: 0.005 min  
 Response: 97405  
 Conc: 3.36 ng/ml

Instrument :  
 ECD\_P  
 ClientSampleId :  
 LOD-MDL-SOIL-01-QT4-2022



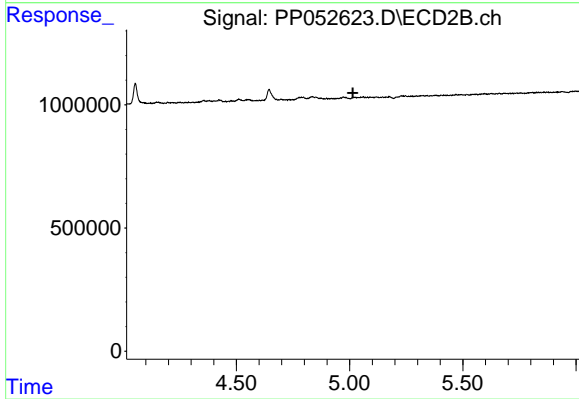
#21 AR-1248-1

R.T.: 4.796 min  
 Delta R.T.: 0.022 min  
 Response: 136419  
 Conc: 4.81 ng/ml



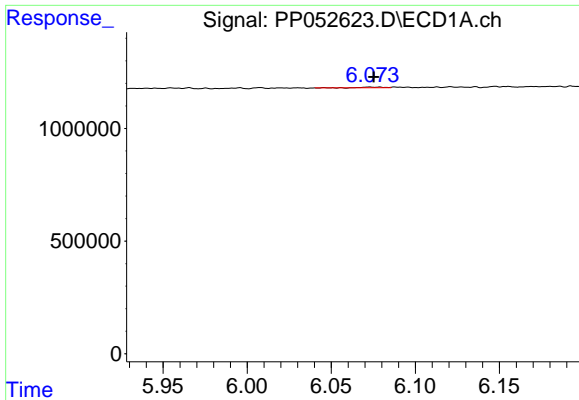
#22 AR-1248-2

R.T.: 5.869 min  
 Delta R.T.: -0.001 min  
 Response: 30812  
 Conc: 0.73 ng/ml



#22 AR-1248-2

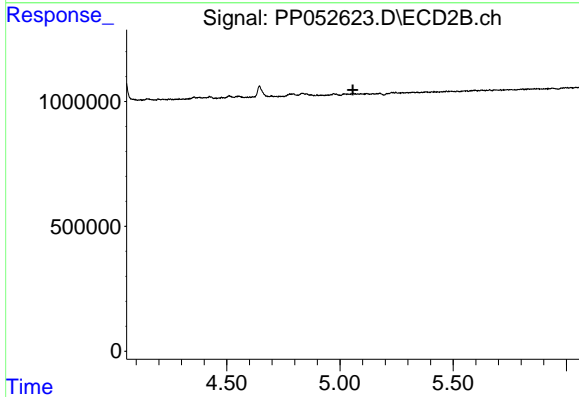
R.T.: 0.000 min  
 Exp R.T.: 5.014 min  
 Response: 0  
 Conc: N.D.



#23 AR-1248-3

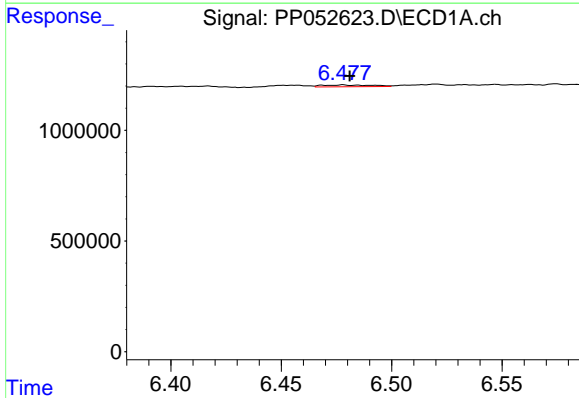
R.T.: 6.073 min  
 Delta R.T.: -0.003 min  
 Response: 26802  
 Conc: 0.52 ng/ml

Instrument :  
 ECD\_P  
 ClientSampleId :  
 LOD-MDL-SOIL-01-QT4-2022



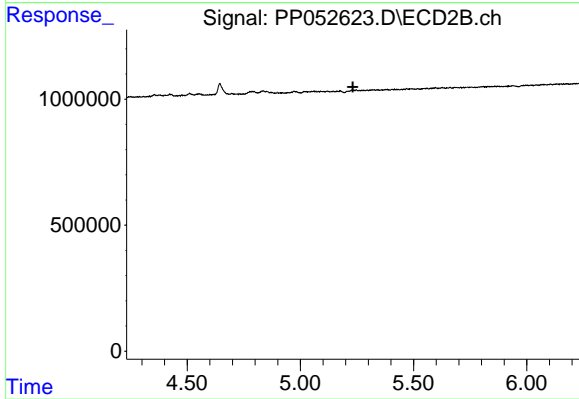
#23 AR-1248-3

R.T.: 0.000 min  
 Exp R.T. : 5.057 min  
 Response: 0  
 Conc: N.D.



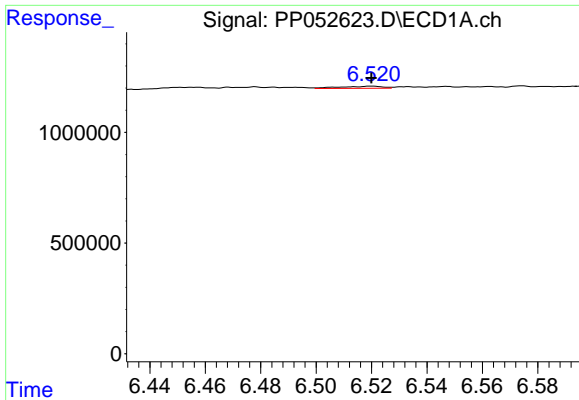
#24 AR-1248-4

R.T.: 6.478 min  
 Delta R.T.: -0.003 min  
 Response: 134223  
 Conc: 2.44 ng/ml



#24 AR-1248-4

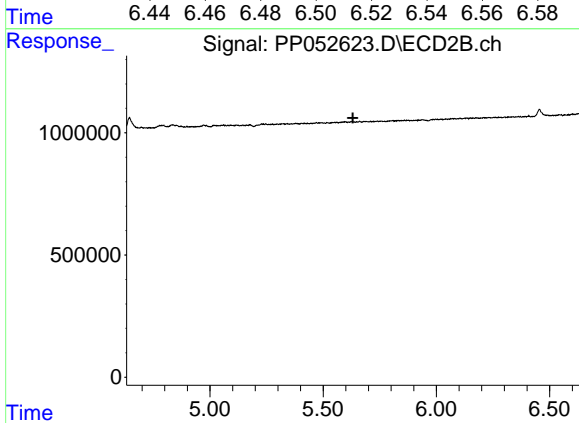
R.T.: 0.000 min  
 Exp R.T. : 5.232 min  
 Response: 0  
 Conc: N.D.



#25 AR-1248-5

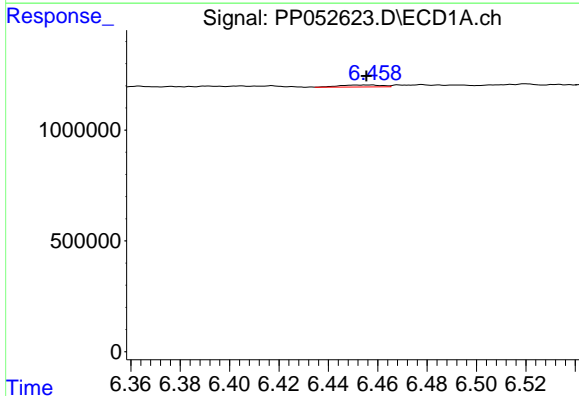
R.T.: 6.520 min  
 Delta R.T.: 0.000 min  
 Response: 106220  
 Conc: 1.87 ng/ml

Instrument : ECD\_P  
 ClientSampleId : LOD-MDL-SOIL-01-QT4-2022



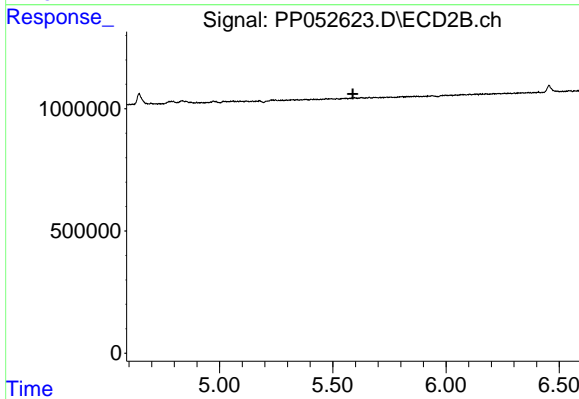
#25 AR-1248-5

R.T.: 0.000 min  
 Exp R.T. : 5.631 min  
 Response: 0  
 Conc: N.D.



#26 AR-1254-1

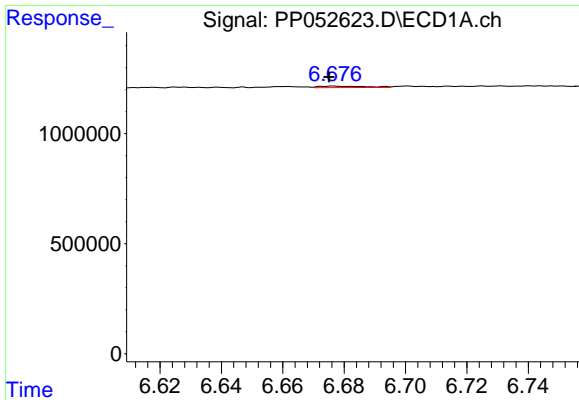
R.T.: 6.456 min  
 Delta R.T.: 0.000 min  
 Response: 104760  
 Conc: 1.68 ng/ml



#26 AR-1254-1

R.T.: 0.000 min  
 Exp R.T. : 5.589 min  
 Response: 0  
 Conc: N.D.

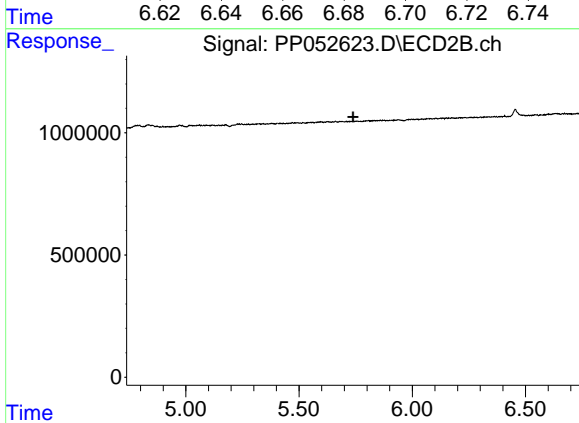




#27 AR-1254-2

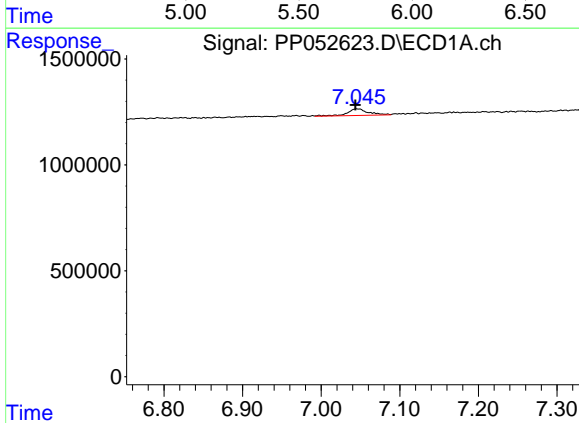
R.T.: 6.677 min  
 Delta R.T.: 0.002 min  
 Response: 75484  
 Conc: 0.79 ng/ml

Instrument :  
 ECD\_P  
 ClientSampleId :  
 LOD-MDL-SOIL-01-QT4-2022



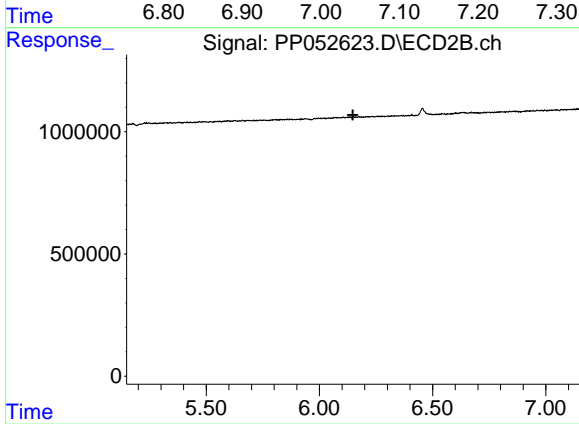
#27 AR-1254-2

R.T.: 0.000 min  
 Exp R.T. : 5.738 min  
 Response: 0  
 Conc: N.D.



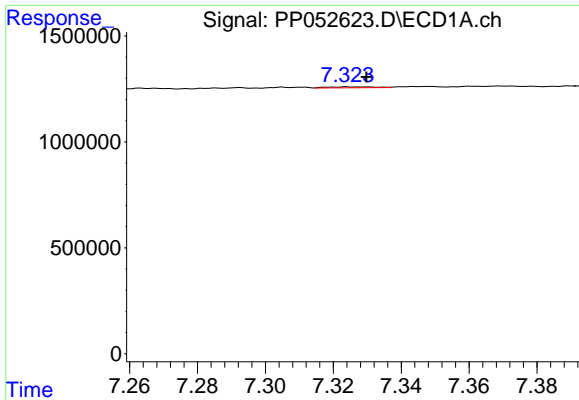
#28 AR-1254-3

R.T.: 7.045 min  
 Delta R.T.: 0.002 min  
 Response: 568295  
 Conc: 6.08 ng/ml



#28 AR-1254-3

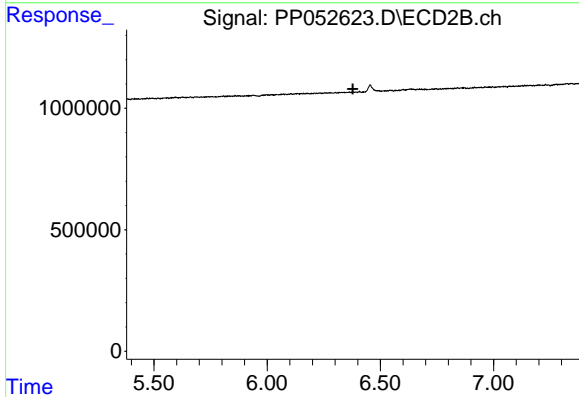
R.T.: 0.000 min  
 Exp R.T. : 6.148 min  
 Response: 0  
 Conc: N.D.



#29 AR-1254-4

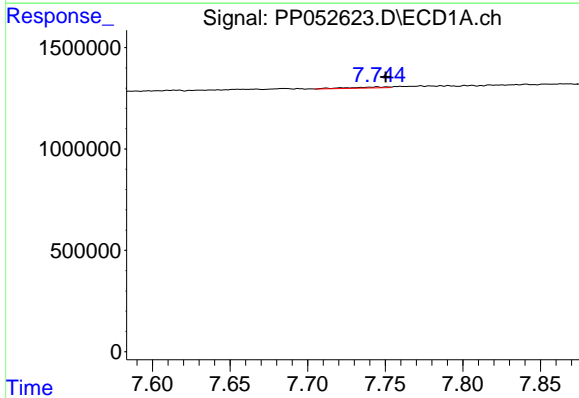
R.T.: 7.324 min  
 Delta R.T.: -0.005 min  
 Response: 46124  
 Conc: 0.75 ng/ml

Instrument : ECD\_P  
 ClientSampleId : LOD-MDL-SOIL-01-QT4-2022



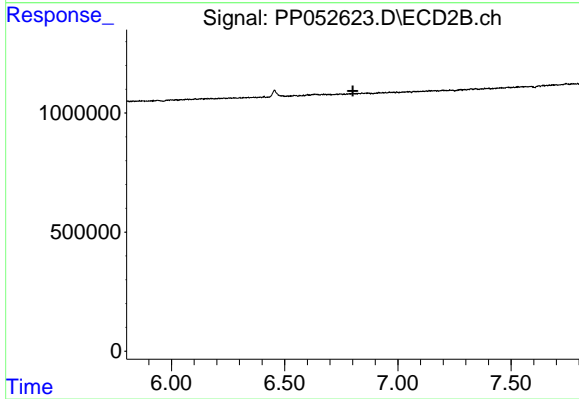
#29 AR-1254-4

R.T.: 0.000 min  
 Exp R.T. : 6.379 min  
 Response: 0  
 Conc: N.D.



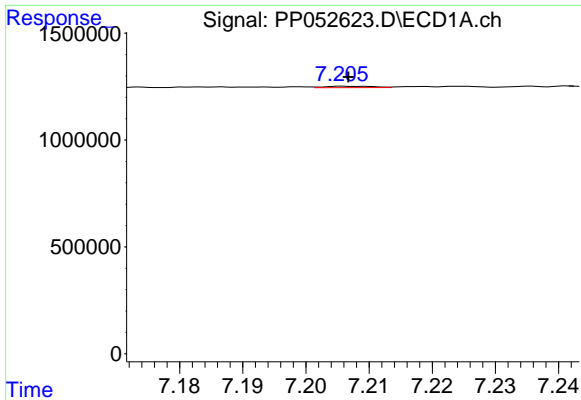
#30 AR-1254-5

R.T.: 7.745 min  
 Delta R.T.: -0.006 min  
 Response: 94417  
 Conc: 1.25 ng/ml



#30 AR-1254-5

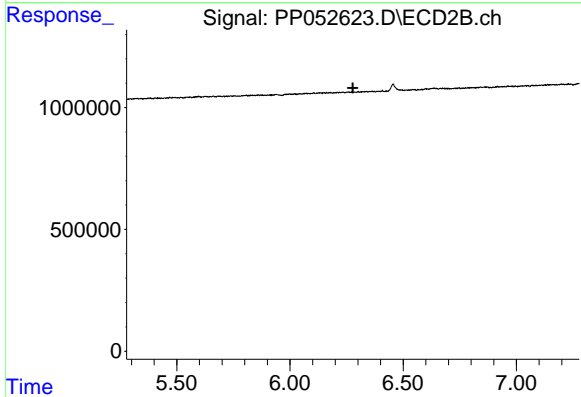
R.T.: 0.000 min  
 Exp R.T. : 6.801 min  
 Response: 0  
 Conc: N.D.



#31 AR-1260-1

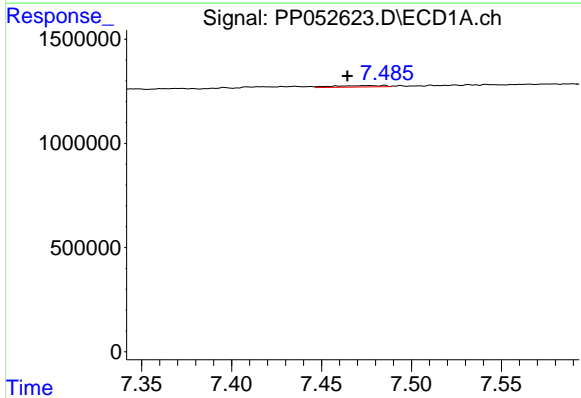
R.T.: 7.207 min  
 Delta R.T.: 0.000 min  
 Response: 35956  
 Conc: 0.47 ng/ml

Instrument :  
 ECD\_P  
 ClientSampleId :  
 LOD-MDL-SOIL-01-QT4-2022



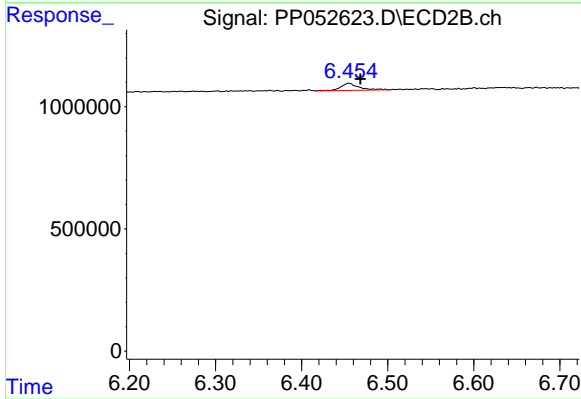
#31 AR-1260-1

R.T.: 0.000 min  
 Exp R.T. : 6.278 min  
 Response: 0  
 Conc: N.D.



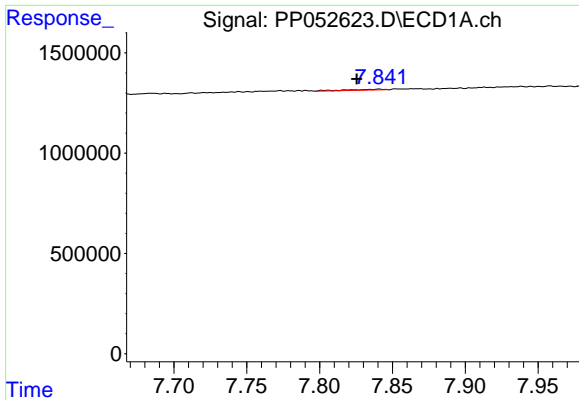
#32 AR-1260-2

R.T.: 7.476 min  
 Delta R.T.: 0.012 min  
 Response: 132976  
 Conc: 1.59 ng/ml



#32 AR-1260-2

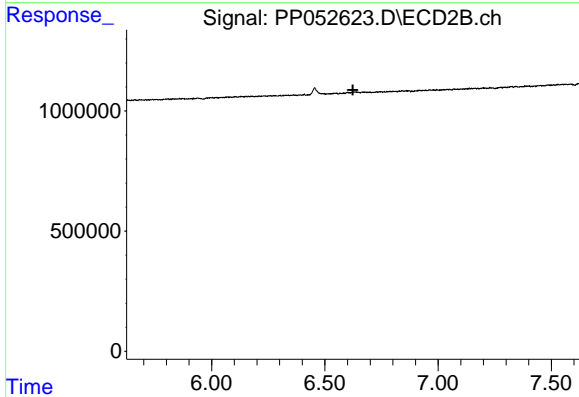
R.T.: 6.455 min  
 Delta R.T.: -0.013 min  
 Response: 437328  
 Conc: 5.46 ng/ml



#33 AR-1260-3

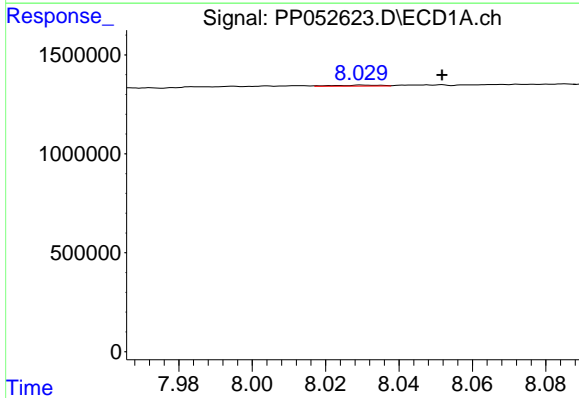
R.T.: 7.841 min  
 Delta R.T.: 0.015 min  
 Response: 70711  
 Conc: 1.10 ng/ml

Instrument :  
 ECD\_P  
 ClientSampleId :  
 LOD-MDL-SOIL-01-QT4-2022



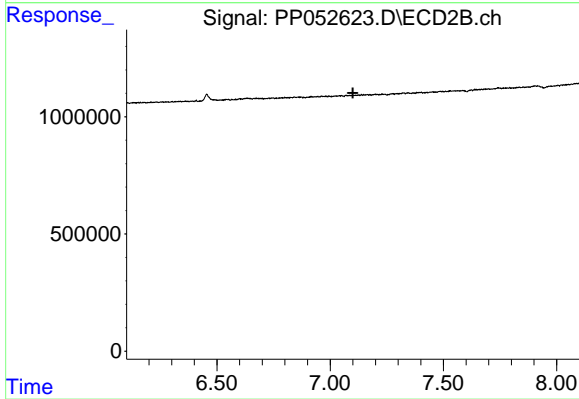
#33 AR-1260-3

R.T.: 0.000 min  
 Exp R.T. : 6.624 min  
 Response: 0  
 Conc: N.D.



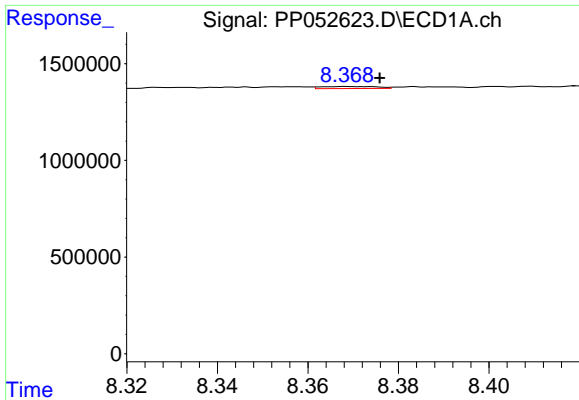
#34 AR-1260-4

R.T.: 8.030 min  
 Delta R.T.: -0.022 min  
 Response: 47853  
 Conc: 0.63 ng/ml



#34 AR-1260-4

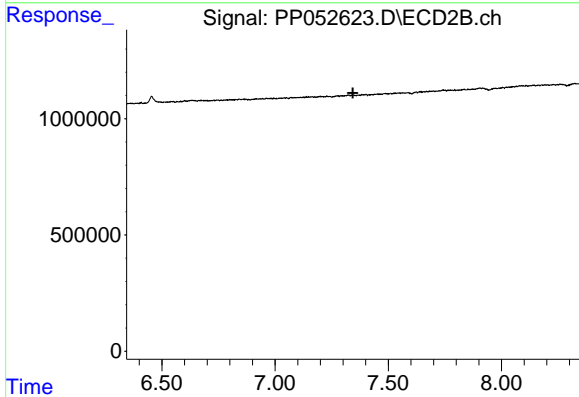
R.T.: 0.000 min  
 Exp R.T. : 7.100 min  
 Response: 0  
 Conc: N.D.



#35 AR-1260-5

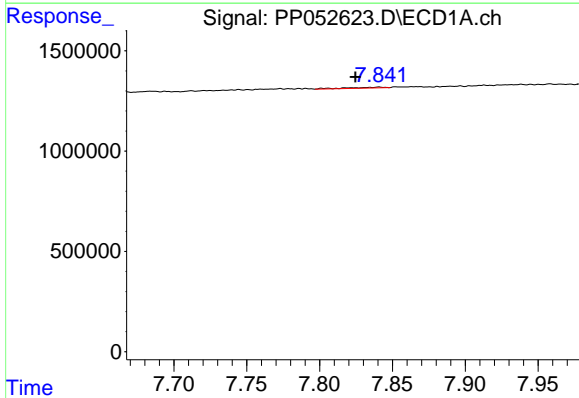
R.T.: 8.368 min  
 Delta R.T.: -0.007 min  
 Response: 88090  
 Conc: 0.66 ng/ml

Instrument :  
 ECD\_P  
 ClientSampleId :  
 LOD-MDL-SOIL-01-QT4-2022



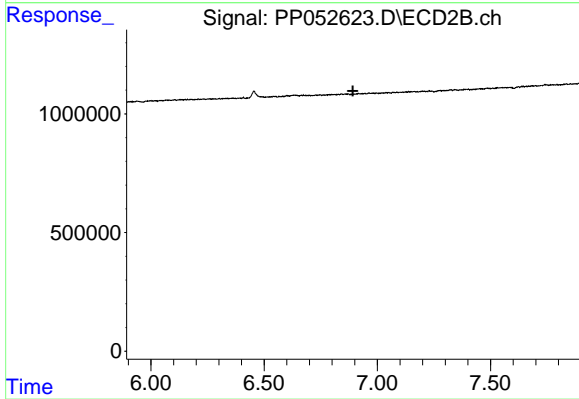
#35 AR-1260-5

R.T.: 0.000 min  
 Exp R.T. : 7.343 min  
 Response: 0  
 Conc: N.D.



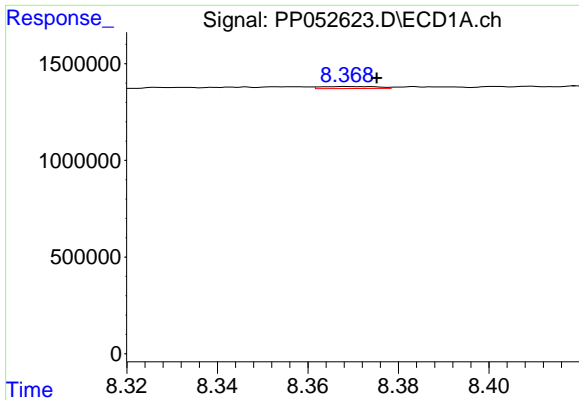
#36 AR-1262-1

R.T.: 7.841 min  
 Delta R.T.: 0.016 min  
 Response: 70711  
 Conc: 0.72 ng/ml



#36 AR-1262-1

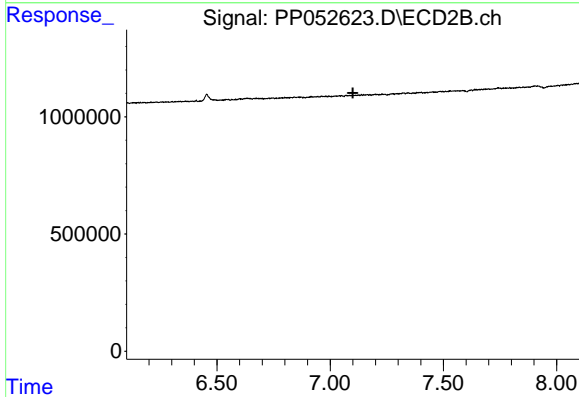
R.T.: 0.000 min  
 Exp R.T. : 6.892 min  
 Response: 0  
 Conc: N.D.



#37 AR-1262-2

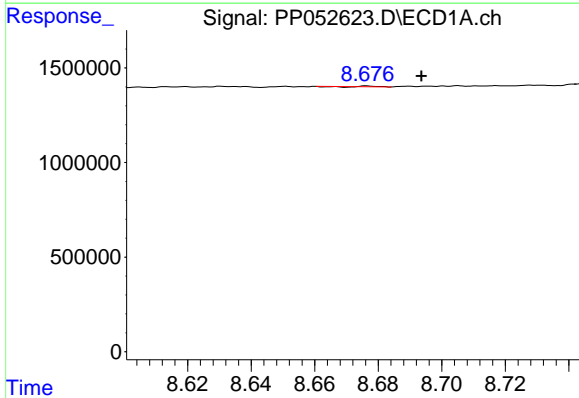
R.T.: 8.368 min  
 Delta R.T.: -0.007 min  
 Response: 88090  
 Conc: 0.58 ng/ml

Instrument :  
 ECD\_P  
 ClientSampleId :  
 LOD-MDL-SOIL-01-QT4-2022



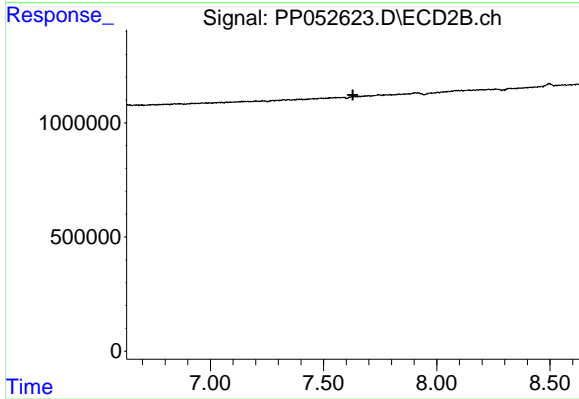
#37 AR-1262-2

R.T.: 0.000 min  
 Exp R.T. : 7.100 min  
 Response: 0  
 Conc: N.D.



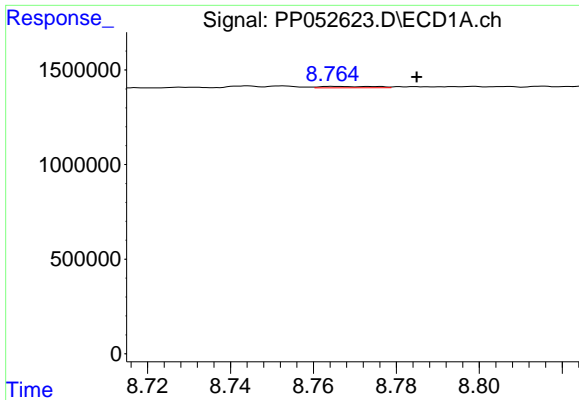
#38 AR-1262-3

R.T.: 8.677 min  
 Delta R.T.: -0.017 min  
 Response: 256  
 Conc: 0.00 ng/ml



#38 AR-1262-3

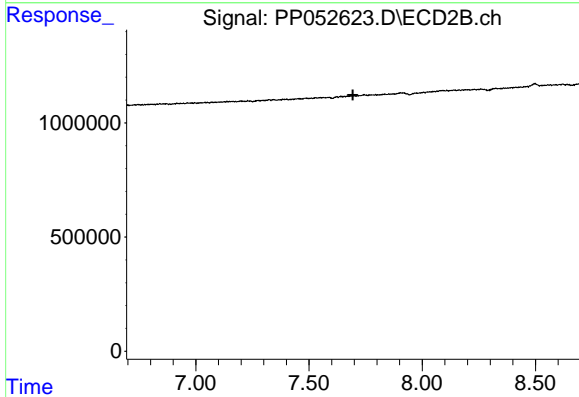
R.T.: 0.000 min  
 Exp R.T. : 7.629 min  
 Response: 0  
 Conc: N.D.



#39 AR-1262-4

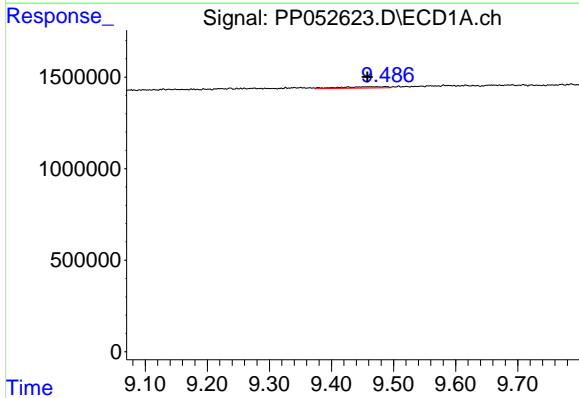
R.T.: 8.765 min  
 Delta R.T.: -0.020 min  
 Response: 67377  
 Conc: 1.08 ng/ml

Instrument :  
 ECD\_P  
 ClientSampleId :  
 LOD-MDL-SOIL-01-QT4-2022



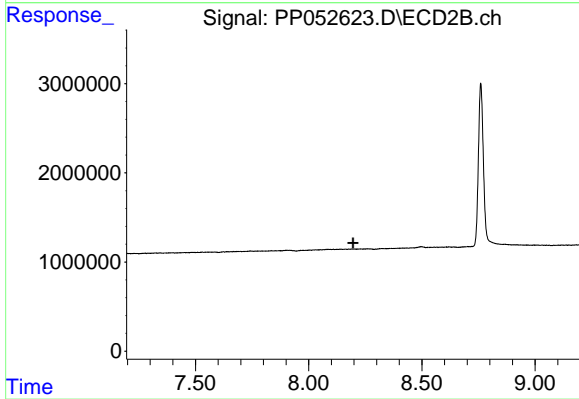
#39 AR-1262-4

R.T.: 0.000 min  
 Exp R.T. : 7.694 min  
 Response: 0  
 Conc: N.D.



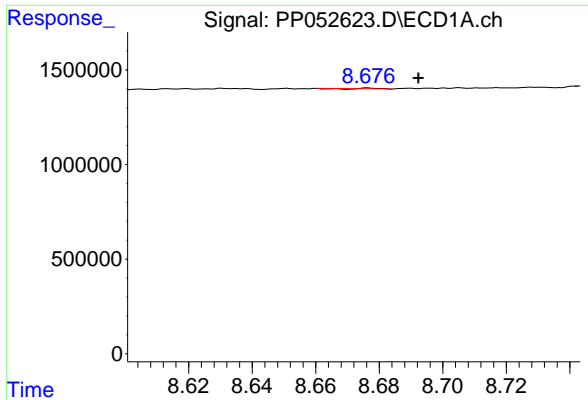
#40 AR-1262-5

R.T.: 9.487 min  
 Delta R.T.: 0.029 min  
 Response: 413611  
 Conc: 6.45 ng/ml



#40 AR-1262-5

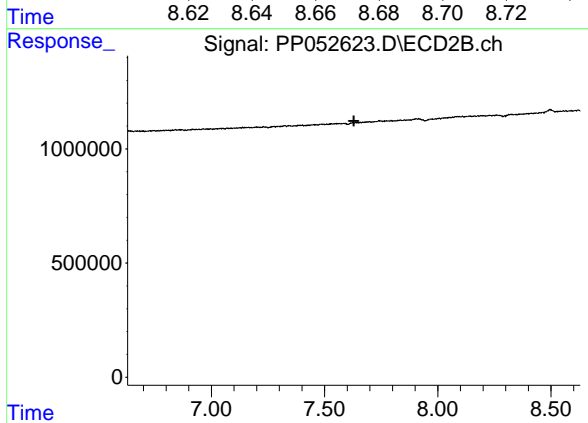
R.T.: 0.000 min  
 Exp R.T. : 8.196 min  
 Response: 0  
 Conc: N.D.



#41 AR-1268-1

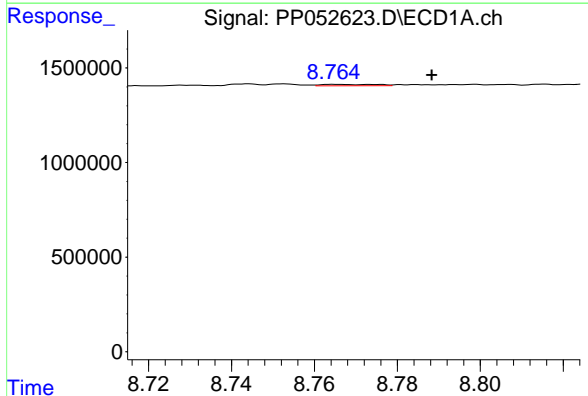
R.T.: 8.677 min  
 Delta R.T.: -0.016 min  
 Response: 256  
 Conc: 0.00 ng/ml

Instrument : ECD\_P  
 ClientSampleId : LOD-MDL-SOIL-01-QT4-2022



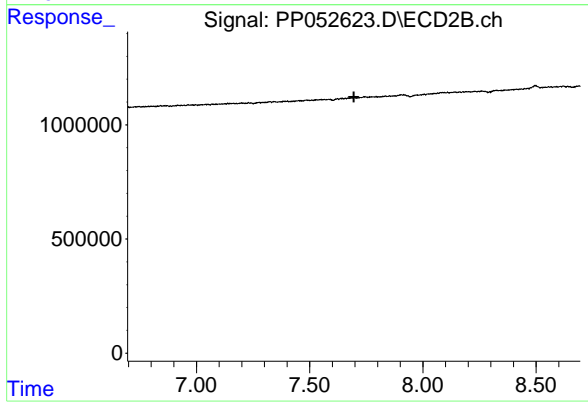
#41 AR-1268-1

R.T.: 0.000 min  
 Exp R.T. : 7.630 min  
 Response: 0  
 Conc: N.D.



#42 AR-1268-2

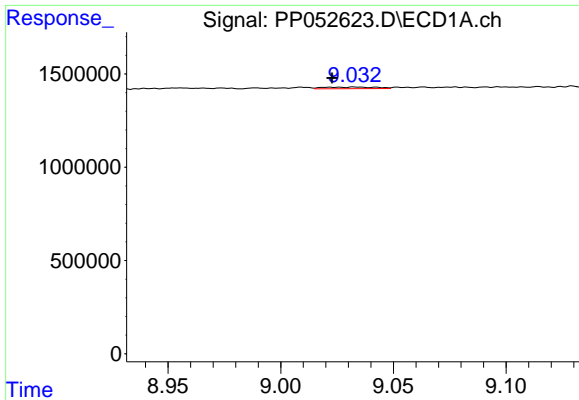
R.T.: 8.765 min  
 Delta R.T.: -0.023 min  
 Response: 67377  
 Conc: 0.34 ng/ml



#42 AR-1268-2

R.T.: 0.000 min  
 Exp R.T. : 7.695 min  
 Response: 0  
 Conc: N.D.

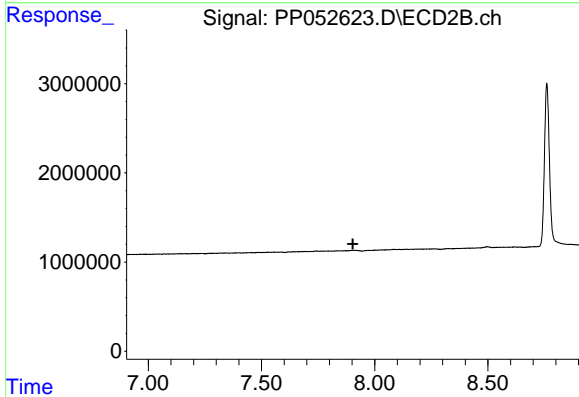




#43 AR-1268-3

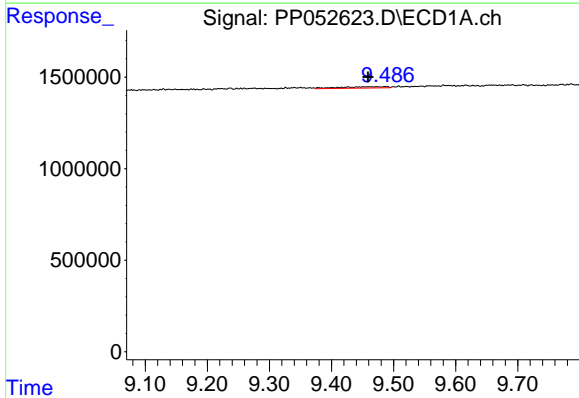
R.T.: 9.033 min  
 Delta R.T.: 0.010 min  
 Response: 137401  
 Conc: 0.76 ng/ml

Instrument :  
 ECD\_P  
 ClientSampleId :  
 LOD-MDL-SOIL-01-QT4-2022



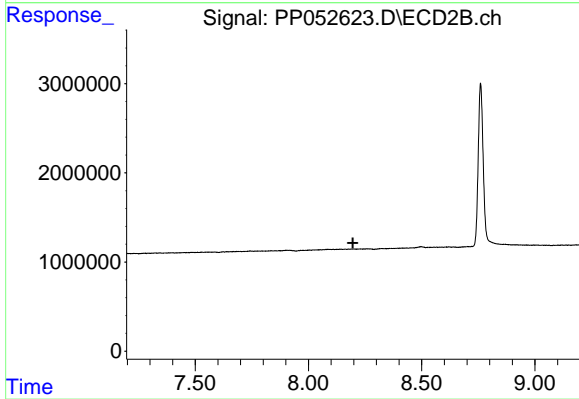
#43 AR-1268-3

R.T.: 0.000 min  
 Exp R.T. : 7.903 min  
 Response: 0  
 Conc: N.D.



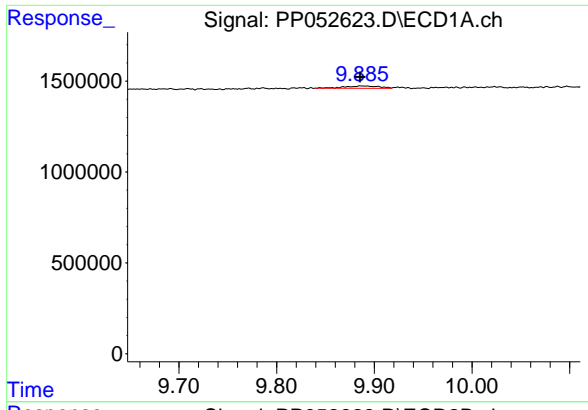
#44 AR-1268-4

R.T.: 9.487 min  
 Delta R.T.: 0.028 min  
 Response: 413611  
 Conc: 5.29 ng/ml



#44 AR-1268-4

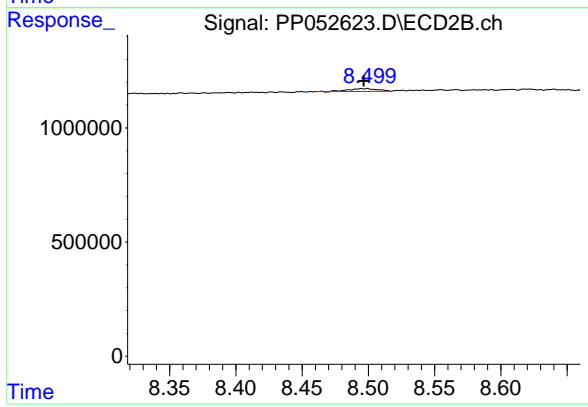
R.T.: 0.000 min  
 Exp R.T. : 8.196 min  
 Response: 0  
 Conc: N.D.



#45 AR-1268-5

R.T.: 9.888 min  
Delta R.T.: 0.003 min  
Response: 309251  
Conc: 0.53 ng/ml

Instrument :  
ECD\_P  
ClientSampleId :  
LOD-MDL-SOIL-01-QT4-2022



#45 AR-1268-5

R.T.: 8.499 min  
Delta R.T.: 0.002 min  
Response: 188410  
Conc: 0.43 ng/ml