

Data Path : Z:\pestpcbsrv\HPCHEM1\ECD_P\Data\PP102422\
 Data File : PP052686.D
 Signal(s) : Signal #1: ECD1A.ch Signal #2: ECD2B.ch
 Acq On : 25 Oct 2022 07:15
 Operator : YP\AJ
 Sample : N5253-07
 Misc :
 ALS Vial : 65 Sample Multiplier: 1

Instrument :
 ECD_P
 ClientSampleId :
 124019

Integration File signal 1: autoint1.e
 Integration File signal 2: autoint2.e
 Quant Time: Oct 25 11:05:33 2022
 Quant Method : Z:\pestpcbsrv\HPCHEM1\ECD_P\methods\PP102122.M
 Quant Title : GC EXTRACTABLES
 QLast Update : Sun Oct 23 15:44:19 2022
 Response via : Initial Calibration
 Integrator: ChemStation

Volume Inj. : 2 µl
 Signal #1 Phase : ZB-MR1 Signal #2 Phase: ZB-MR2
 Signal #1 Info : 30Mx0.32mmx 0.50µ Signal #2 Info : 30M x 0.32mm x 0.25µm

Compound	RT#1	RT#2	Resp#1	Resp#2	ng/ml	ng/ml

System Monitoring Compounds						
1) SA Tetrachlo...	4.421	3.670	20656258	20467492	12.485	15.362
2) SA Decachlor...	10.232	8.758	13990937	11993032	8.731	9.649
Target Compounds						
26) L6 AR-1254-1	6.454	5.587	65346086	84200076	1047.054	1162.455
27) L6 AR-1254-2	6.674	5.736	107.1E6	96429677	1114.737	1501.560 #
28) L6 AR-1254-3	7.041	6.145	132.8E6	177.3E6	1420.536	1790.432 #
29) L6 AR-1254-4	7.328	6.376	96923851	103.6E6	1569.441	2010.412 #
30) L6 AR-1254-5	7.749	6.798	116.1E6	161.2E6	1530.703	1933.978 #

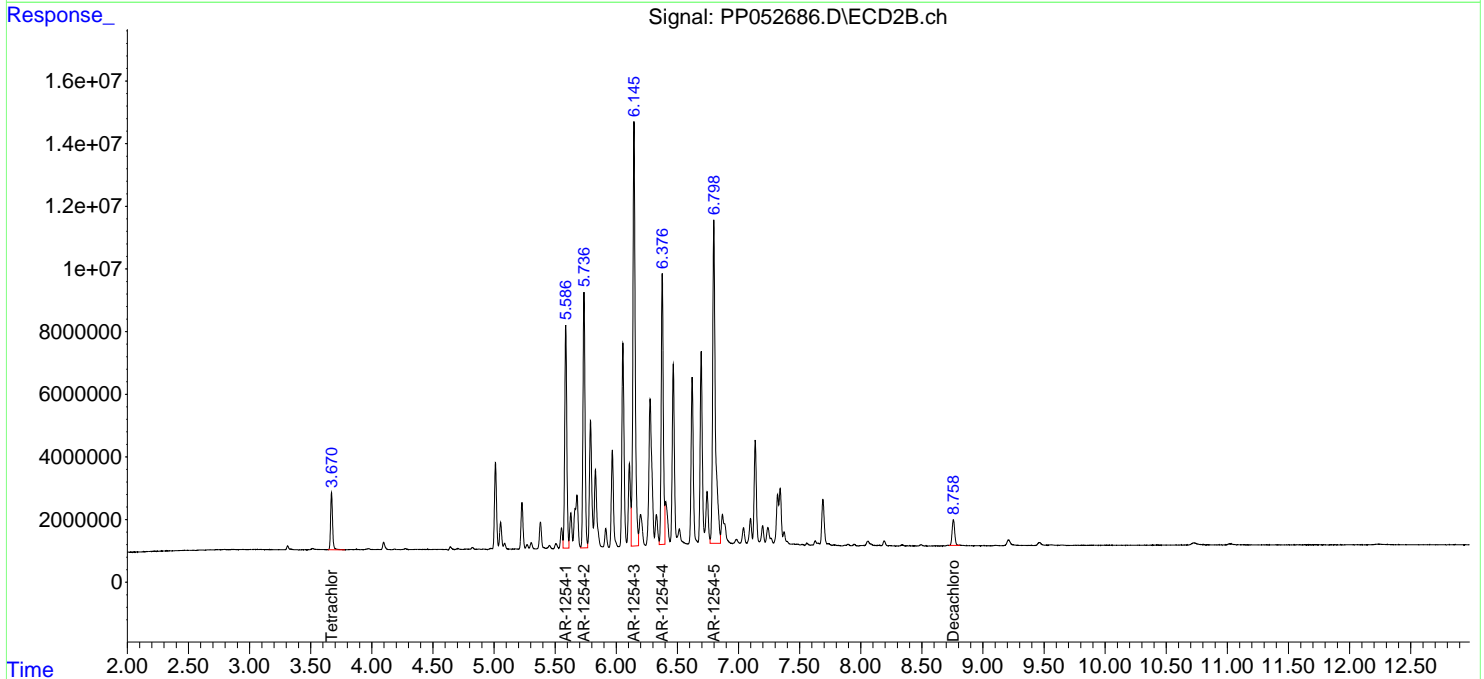
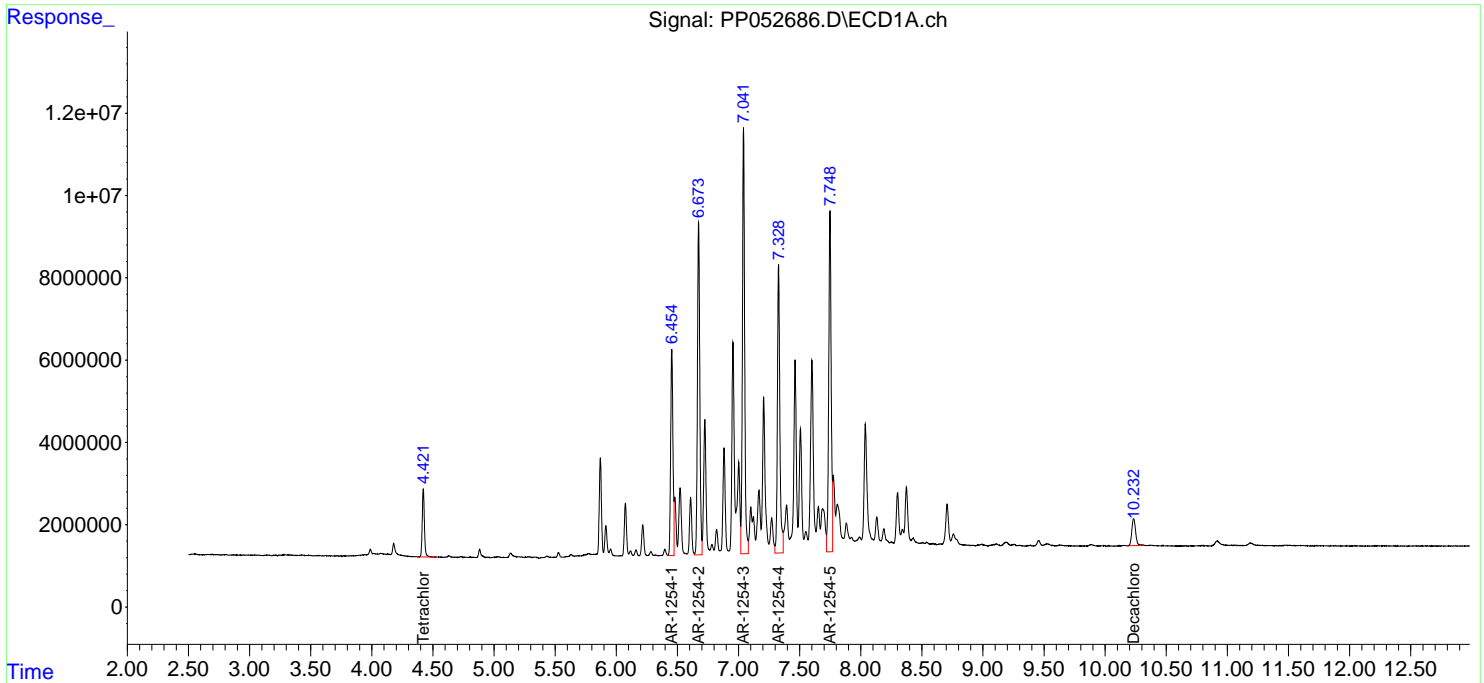
(f)=RT Delta > 1/2 Window (#)=Amounts differ by > 25% (m)=manual int.

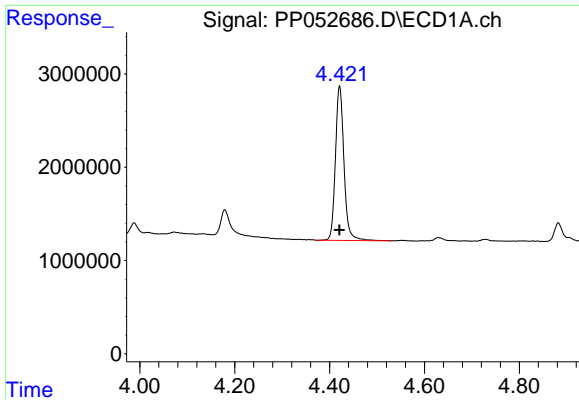
Data Path : Z:\pestpcbsrv\HPCHEM1\ECD_P\Data\PP102422\
 Data File : PP052686.D
 Signal(s) : Signal #1: ECD1A.ch Signal #2: ECD2B.ch
 Acq On : 25 Oct 2022 07:15
 Operator : YP\AJ
 Sample : N5253-07
 Misc :
 ALS Vial : 65 Sample Multiplier: 1

Instrument :
 ECD_P
 ClientSampleId :
 124019

Integration File signal 1: autoint1.e
 Integration File signal 2: autoint2.e
 Quant Time: Oct 25 11:05:33 2022
 Quant Method : Z:\pestpcbsrv\HPCHEM1\ECD_P\methods\PP102122.M
 Quant Title : GC EXTRACTABLES
 QLast Update : Sun Oct 23 15:44:19 2022
 Response via : Initial Calibration
 Integrator: ChemStation

Volume Inj. : 2 µl
 Signal #1 Phase : ZB-MR1 Signal #2 Phase: ZB-MR2
 Signal #1 Info : 30Mx0.32mmx 0.50µ Signal #2 Info : 30M x 0.32mm x 0.25µm

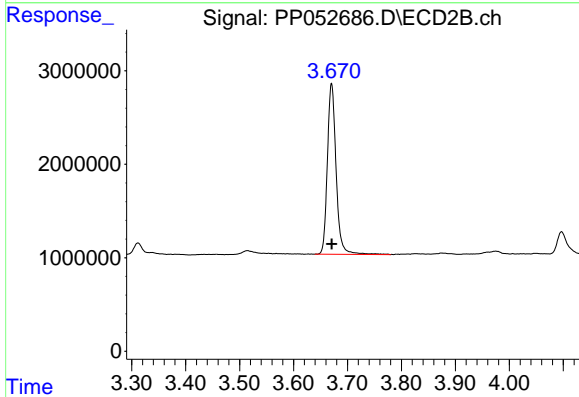




#1 Tetrachloro-m-xylene

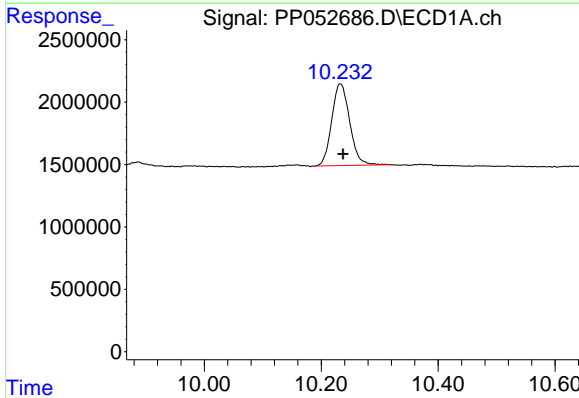
R.T.: 4.421 min
 Delta R.T.: 0.000 min
 Response: 20656258
 Conc: 12.49 ng/ml

Instrument :
 ECD_P
 ClientSampleId :
 124019



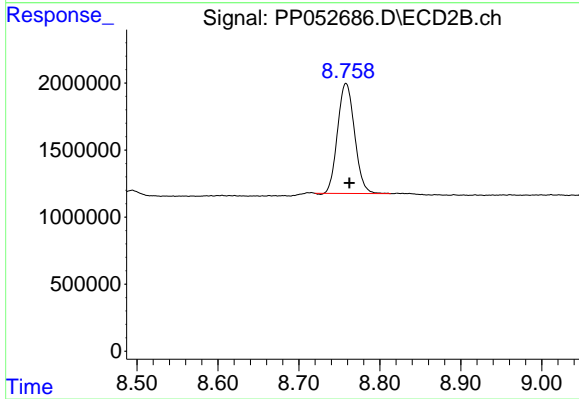
#1 Tetrachloro-m-xylene

R.T.: 3.670 min
 Delta R.T.: 0.000 min
 Response: 20467492
 Conc: 15.36 ng/ml



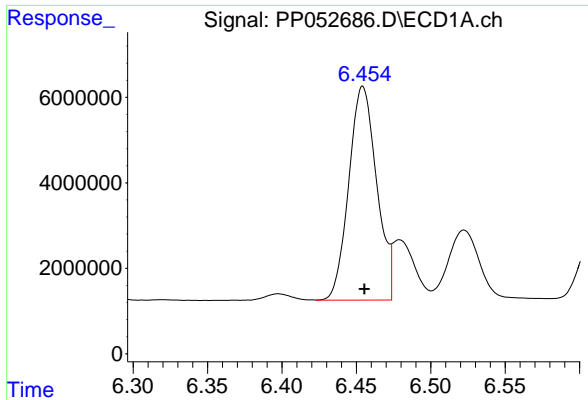
#2 Decachlorobiphenyl

R.T.: 10.232 min
 Delta R.T.: -0.005 min
 Response: 13990937
 Conc: 8.73 ng/ml



#2 Decachlorobiphenyl

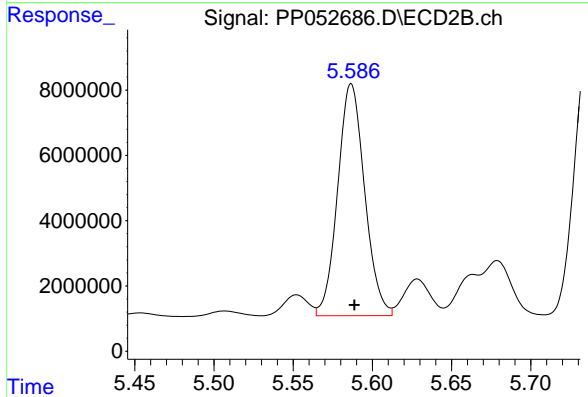
R.T.: 8.758 min
 Delta R.T.: -0.004 min
 Response: 11993032
 Conc: 9.65 ng/ml



#26 AR-1254-1

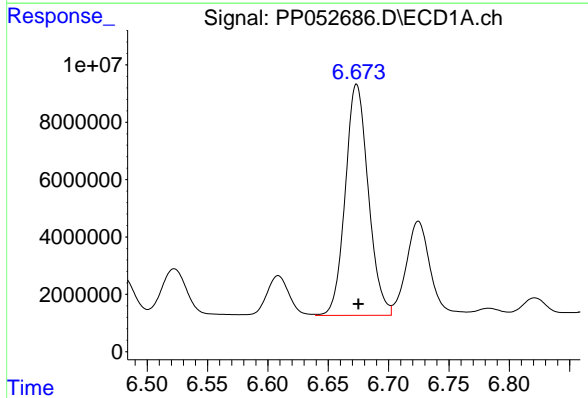
R.T.: 6.454 min
 Delta R.T.: -0.001 min
 Response: 65346086
 Conc: 1047.05 ng/ml

Instrument :
 ECD_P
 ClientSampleId :
 124019



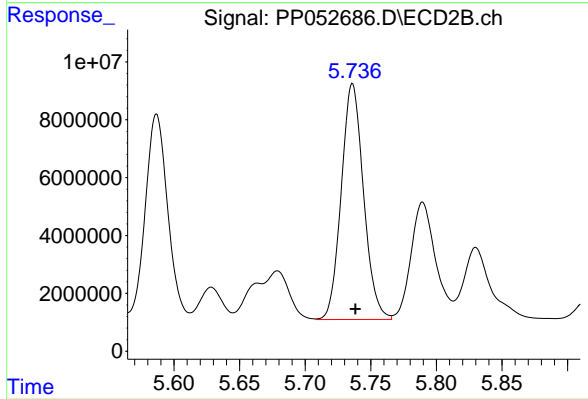
#26 AR-1254-1

R.T.: 5.587 min
 Delta R.T.: -0.002 min
 Response: 84200076
 Conc: 1162.46 ng/ml



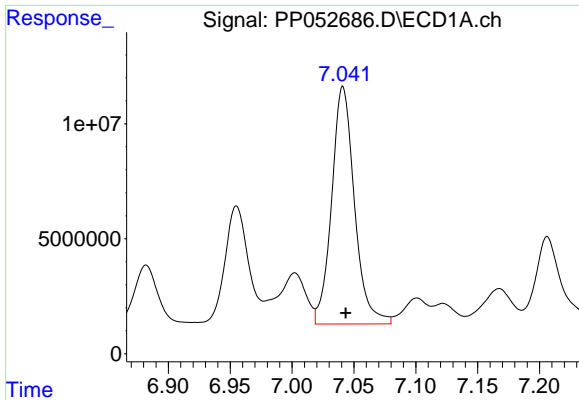
#27 AR-1254-2

R.T.: 6.674 min
 Delta R.T.: -0.002 min
 Response: 107066898
 Conc: 1114.74 ng/ml



#27 AR-1254-2

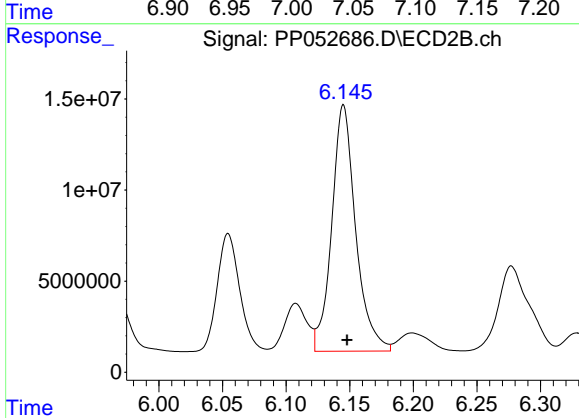
R.T.: 5.736 min
 Delta R.T.: -0.002 min
 Response: 96429677
 Conc: 1501.56 ng/ml



#28 AR-1254-3

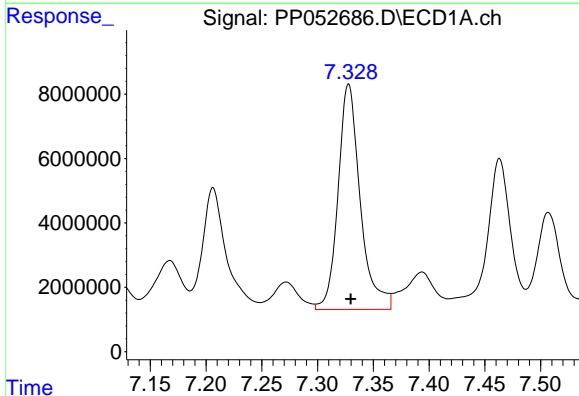
R.T.: 7.041 min
 Delta R.T.: -0.002 min
 Response: 132810477
 Conc: 1420.54 ng/ml

Instrument :
 ECD_P
 ClientSampleId :
 124019



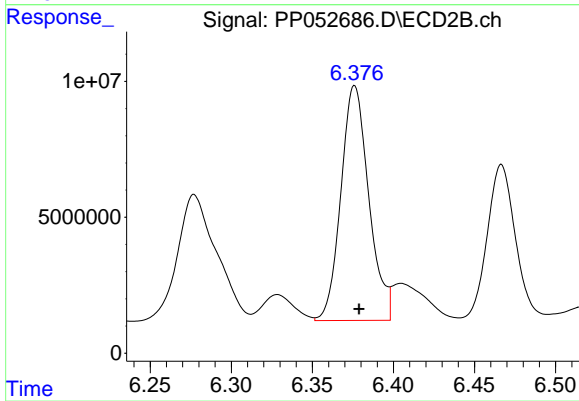
#28 AR-1254-3

R.T.: 6.145 min
 Delta R.T.: -0.003 min
 Response: 177254436
 Conc: 1790.43 ng/ml



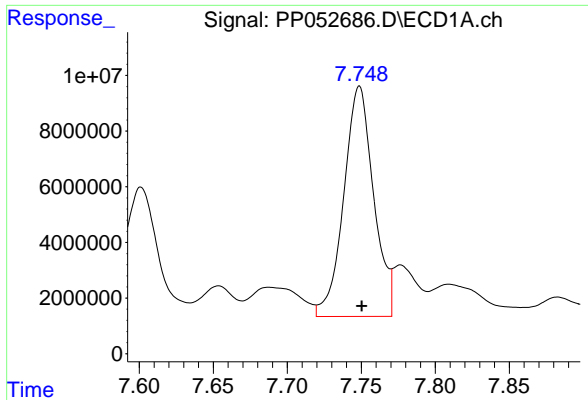
#29 AR-1254-4

R.T.: 7.328 min
 Delta R.T.: -0.002 min
 Response: 96923851
 Conc: 1569.44 ng/ml



#29 AR-1254-4

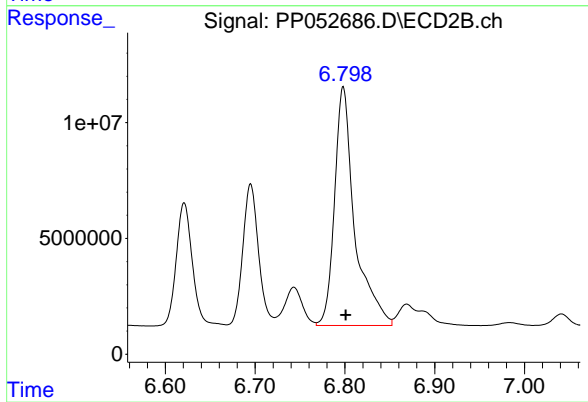
R.T.: 6.376 min
 Delta R.T.: -0.003 min
 Response: 103570335
 Conc: 2010.41 ng/ml



#30 AR-1254-5

R.T.: 7.749 min
Delta R.T.: -0.002 min
Response: 116061343
Conc: 1530.70 ng/m

Instrument :
ECD_P
ClientSampleId :
124019



#30 AR-1254-5

R.T.: 6.798 min
Delta R.T.: -0.003 min
Response: 161209883
Conc: 1933.98 ng/ml