

Data Path : Z:\pestpcbsrv\HPCHEM1\ECD_P\Data\PP102423\
 Data File : PP061242.D
 Signal(s) : Signal #1: ECD1A.ch Signal #2: ECD2B.ch
 Acq On : 24 Oct 2023 23:02
 Operator : YP\AJ
 Sample : AR1254CCC500
 Misc :
 ALS Vial : 6 Sample Multiplier: 1

Instrument :
 ECD_P
ClientSampleId :
 AR1254CCC500

Manual Integrations
APPROVED
 Reviewed By :Yogesh Patel 10/25/2023
 Supervised By :Ankita Jodhani 10/25/2023

Integration File signal 1: autoint1.e
 Integration File signal 2: autoint2.e
 Quant Time: Oct 25 01:24:52 2023
 Quant Method : Z:\pestpcbsrv\HPCHEM1\ECD_P\methods\PP101323.M
 Quant Title : GC EXTRACTABLES
 QLast Update : Sat Oct 14 13:32:01 2023
 Response via : Initial Calibration
 Integrator: ChemStation

Volume Inj. : 2 µl
 Signal #1 Phase : ZB-MR1 Signal #2 Phase: ZB-MR2
 Signal #1 Info : 30Mx0.32mmx 0.50µ Signal #2 Info : 30M x 0.32mm x 0.25µm

| Compound | RT#1 | RT#2 | Resp#1 | Resp#2 | ng/ml | ng/ml |
|-----------------------------|--------|-------|----------|----------|---------|---------|
| ----- | | | | | | |
| System Monitoring Compounds | | | | | | |
| 1) SA Tetrachlo... | 4.561 | 3.695 | 124.0E6 | 79321173 | 56.427 | 58.670m |
| 2) SA Decachlor... | 10.533 | 8.767 | 86310104 | 65647448 | 55.115m | 43.662 |
| Target Compounds | | | | | | |
| 26) L6 AR-1254-1 | 6.623 | 5.607 | 43790195 | 38195250 | 553.682 | 494.365 |
| 27) L6 AR-1254-2 | 6.845 | 5.755 | 64732618 | 33775855 | 543.387 | 487.482 |
| 28) L6 AR-1254-3 | 7.216 | 6.163 | 66277376 | 54719677 | 541.747 | 483.597 |
| 29) L6 AR-1254-4 | 7.504 | 6.393 | 46681574 | 32655882 | 530.355 | 475.277 |
| 30) L6 AR-1254-5 | 7.927 | 6.814 | 49065311 | 49958813 | 494.111 | 467.039 |
| ----- | | | | | | |

(f)=RT Delta > 1/2 Window (#)=Amounts differ by > 25% (m)=manual int.

Data Path : Z:\pestpcbsrv\HPCHEM1\ECD_P\Data\PP102423\
 Data File : PP061242.D
 Signal(s) : Signal #1: ECD1A.ch Signal #2: ECD2B.ch
 Acq On : 24 Oct 2023 23:02
 Operator : YP\AJ
 Sample : AR1254CCC500
 Misc :
 ALS Vial : 6 Sample Multiplier: 1

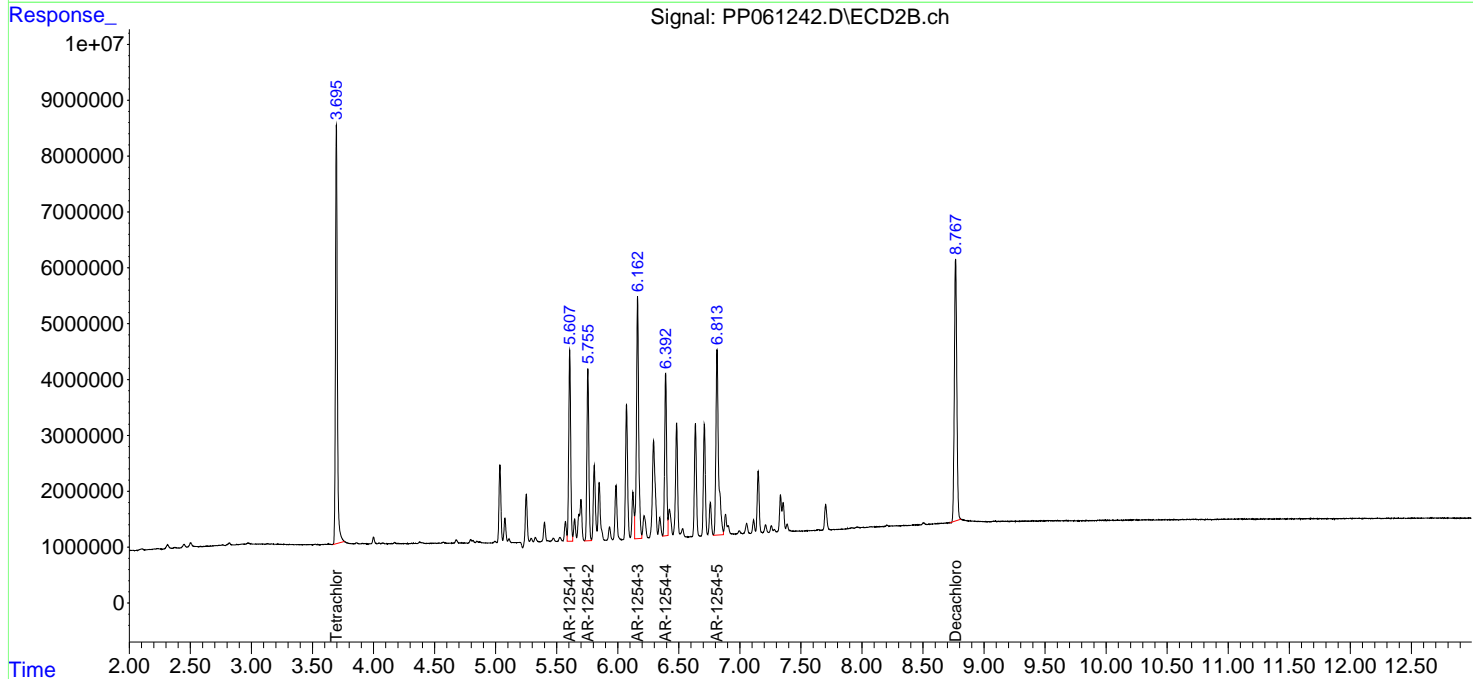
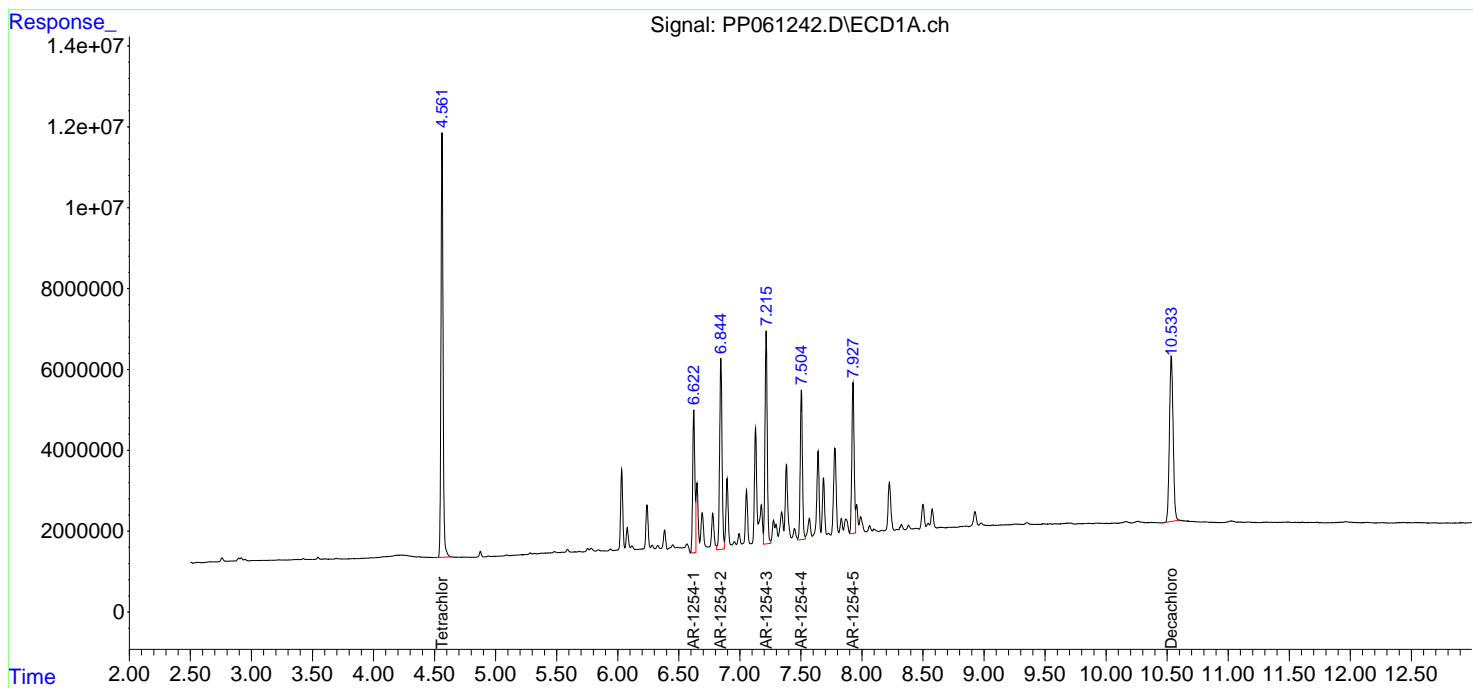
Instrument :
 ECD_P
 ClientSampleId :
 AR1254CCC500

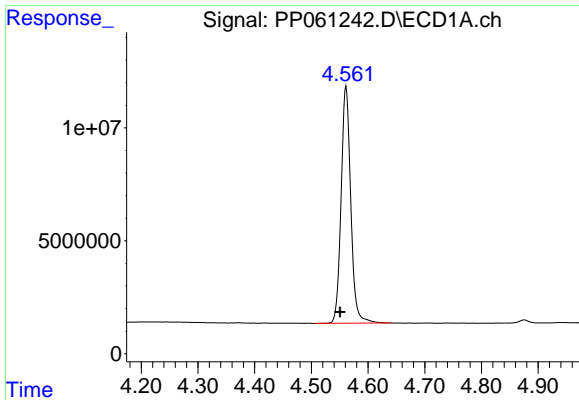
Manual Integrations
 APPROVED

Reviewed By :Yogesh Patel 10/25/2023
 Supervised By :Ankita Jodhani 10/25/2023

Integration File signal 1: autoint1.e
 Integration File signal 2: autoint2.e
 Quant Time: Oct 25 01:24:52 2023
 Quant Method : Z:\pestpcbsrv\HPCHEM1\ECD_P\methods\PP101323.M
 Quant Title : GC EXTRACTABLES
 QLast Update : Sat Oct 14 13:32:01 2023
 Response via : Initial Calibration
 Integrator: ChemStation

Volume Inj. : 2 µl
 Signal #1 Phase : ZB-MR1 Signal #2 Phase: ZB-MR2
 Signal #1 Info : 30Mx0.32mmx 0.50µ Signal #2 Info : 30M x 0.32mm x 0.25µm

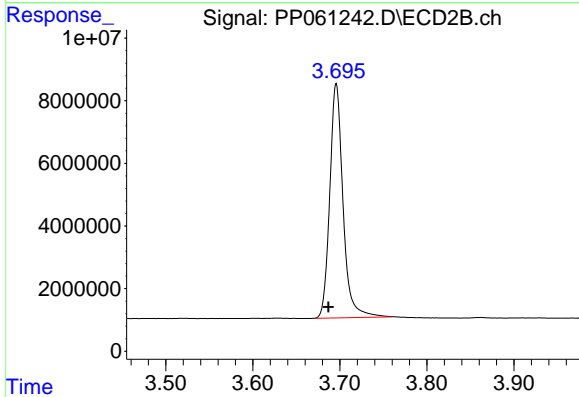




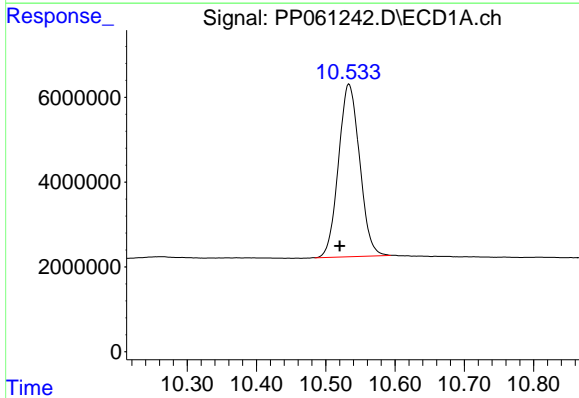
#1 Tetrachloro-m-xylene
 R.T.: 4.561 min
 Delta R.T.: 0.010 min
 Response: 124046419
 Conc: 56.43 ng/ml

Instrument : ECD_P
 Client Sample Id : AR1254CCC500

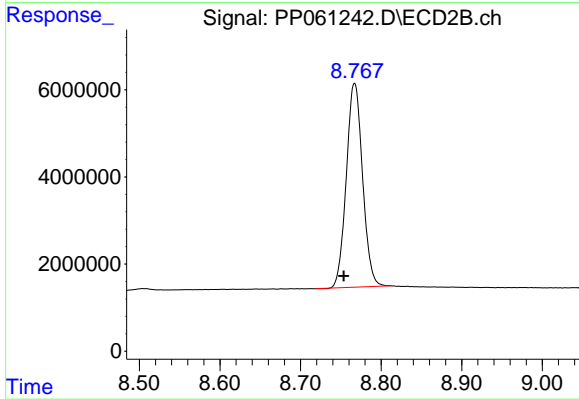
Manual Integrations
APPROVED
 Reviewed By :Yogesh Patel 10/25/2023
 Supervised By :Ankita Jodhani 10/25/2023



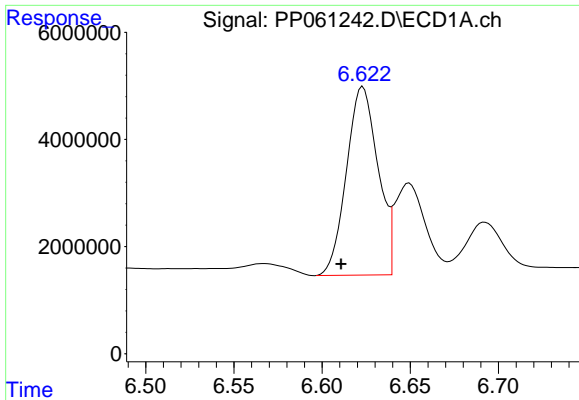
#1 Tetrachloro-m-xylene
 R.T.: 3.695 min
 Delta R.T.: 0.009 min
 Response: 79321173
 Conc: 58.67 ng/ml m



#2 Decachlorobiphenyl
 R.T.: 10.533 min
 Delta R.T.: 0.013 min
 Response: 86310104
 Conc: 55.12 ng/ml m



#2 Decachlorobiphenyl
 R.T.: 8.767 min
 Delta R.T.: 0.013 min
 Response: 65647448
 Conc: 43.66 ng/ml



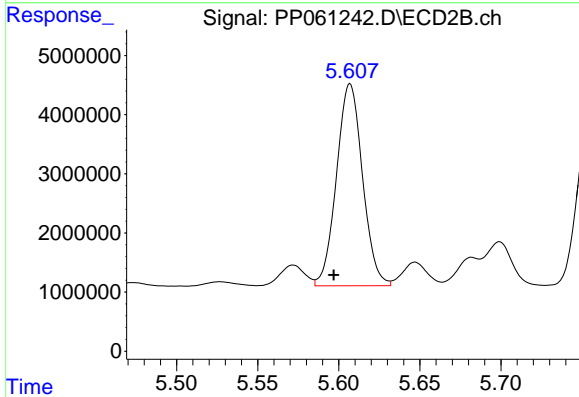
#26 AR-1254-1

R.T.: 6.623 min
 Delta R.T.: 0.012 min
 Response: 43790195
 Conc: 553.68 ng/ml

Instrument :
 ECD_P
 ClientSampleId :
 AR1254CCC500

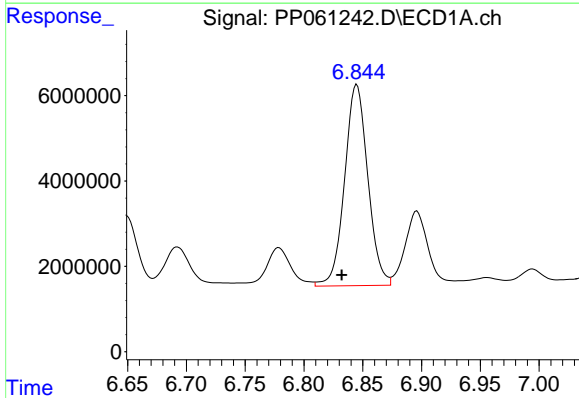
Manual Integrations
 APPROVED

Reviewed By :Yogesh Patel 10/25/2023
 Supervised By :Ankita Jodhani 10/25/2023



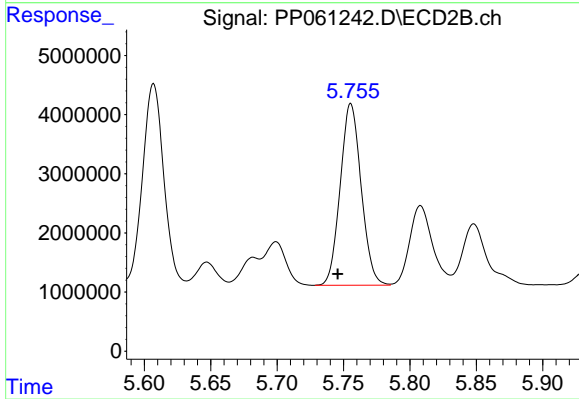
#26 AR-1254-1

R.T.: 5.607 min
 Delta R.T.: 0.010 min
 Response: 38195250
 Conc: 494.36 ng/ml



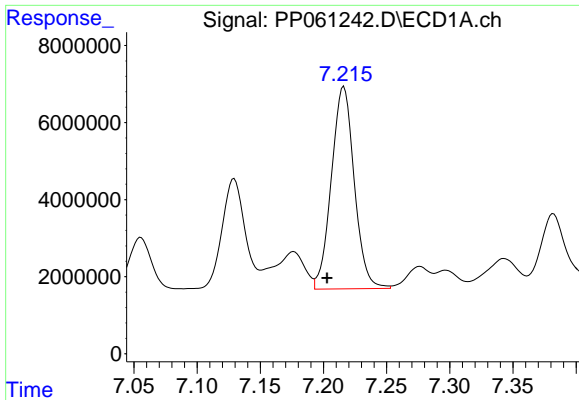
#27 AR-1254-2

R.T.: 6.845 min
 Delta R.T.: 0.013 min
 Response: 64732618
 Conc: 543.39 ng/ml



#27 AR-1254-2

R.T.: 5.755 min
 Delta R.T.: 0.010 min
 Response: 33775855
 Conc: 487.48 ng/ml



#28 AR-1254-3

R.T.: 7.216 min
 Delta R.T.: 0.013 min
 Response: 66277376
 Conc: 541.75 ng/ml

Instrument :

ECD_P

ClientSampleId :

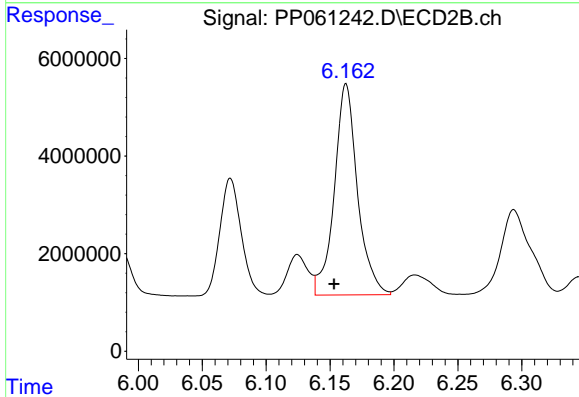
AR1254CCC500

Manual Integrations

APPROVED

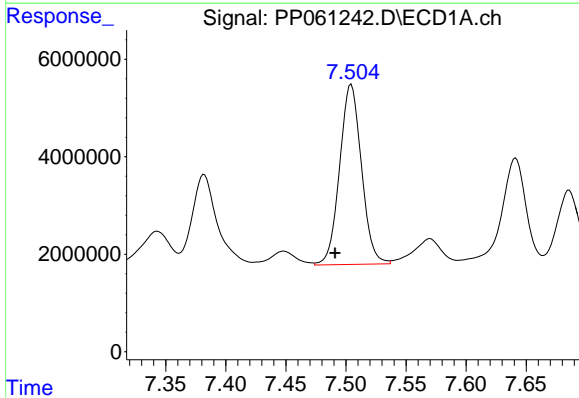
Reviewed By :Yogesh Patel 10/25/2023

Supervised By :Ankita Jodhani 10/25/2023



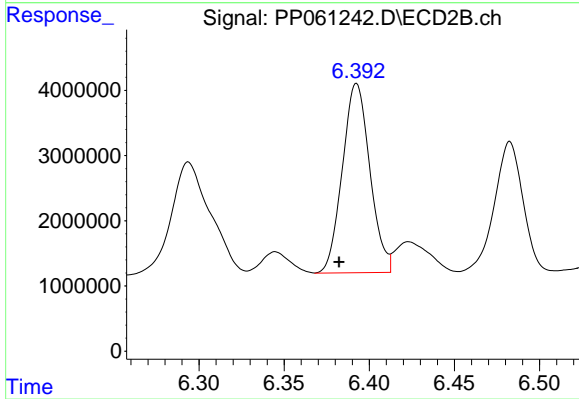
#28 AR-1254-3

R.T.: 6.163 min
 Delta R.T.: 0.009 min
 Response: 54719677
 Conc: 483.60 ng/ml



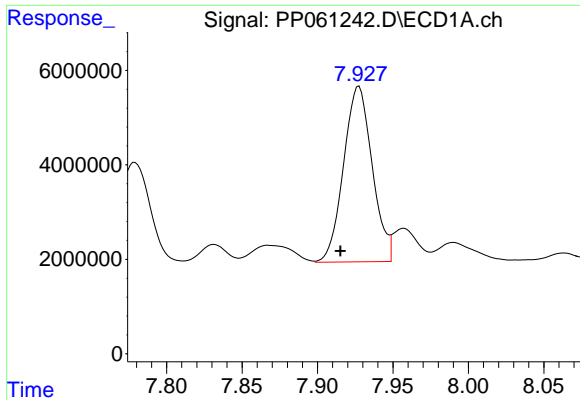
#29 AR-1254-4

R.T.: 7.504 min
 Delta R.T.: 0.013 min
 Response: 46681574
 Conc: 530.36 ng/ml



#29 AR-1254-4

R.T.: 6.393 min
 Delta R.T.: 0.010 min
 Response: 32655882
 Conc: 475.28 ng/ml



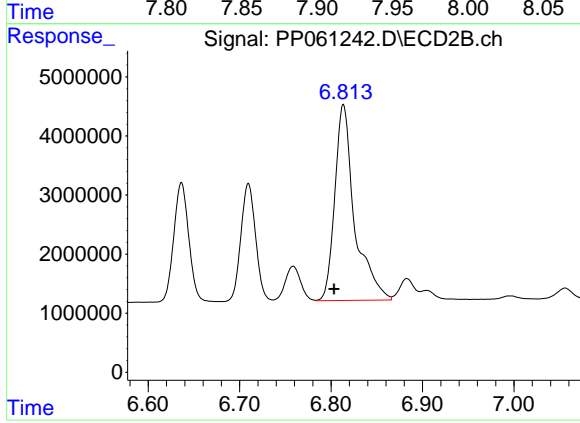
#30 AR-1254-5

R.T.: 7.927 min
 Delta R.T.: 0.012 min
 Response: 49065311
 Conc: 494.11 ng/ml

Instrument :
 ECD_P
 ClientSampleId :
 AR1254CCC500

Manual Integrations
 APPROVED

Reviewed By :Yogesh Patel 10/25/2023
 Supervised By :Ankita Jodhani 10/25/2023



#30 AR-1254-5

R.T.: 6.814 min
 Delta R.T.: 0.010 min
 Response: 49958813
 Conc: 467.04 ng/ml