

Data Path : Z:\pestpcbsrv\HPCHEM1\ECD_P\Data\PP102520\
 Data File : PP030837.D
 Signal(s) : Signal #1: ECD1A.CH Signal #2: ECD2B.CH
 Acq On : 24 Oct 2020 15:15
 Operator : DD\AJ
 Sample : AR1232PP102520ICV500
 Misc :
 ALS Vial : 23 Sample Multiplier: 1

Instrument :
 ECD_P
 ClientSampleId :
 ICVPP102520

Integration File signal 1: autoint1.e
 Integration File signal 2: autoint2.e
 Quant Time: Oct 26 04:47:41 2020
 Quant Method : Z:\pestpcbsrv\HPCHEM1\ECD_O\methods\AR1232PP102520.M
 Quant Title : GC EXTRACTABLES
 QLast Update : Mon Oct 26 04:46:19 2020
 Response via : Initial Calibration
 Integrator: ChemStation 6890 Scale Mode: Small noise peaks clipped

Volume Inj. : 2 µl
 Signal #1 Phase : ZB-MR1 Signal #2 Phase: ZB-MR2
 Signal #1 Info : 30Mx0.32mmx 0.50µ Signal #2 Info : 30M x 0.32mm x 0.25µm

Compound	RT#1	RT#2	Resp#1	Resp#2	ng/ml	ng/ml

System Monitoring Compounds						
1) SA Tetrachlo...	4.803	4.082	3524317	3273309	52.575	52.643
2) SA Decachlor...	10.691	9.421	1858397	1979979	50.599	50.044
Target Compounds						
11) L3 AR-1232-1	5.233	4.531	668426	621273	513.233	524.716
12) L3 AR-1232-2	5.817	5.368	330235	541990	531.887	516.898
13) L3 AR-1232-3	6.133	5.560	603248	291430	519.342	543.322
14) L3 AR-1232-4	6.304	5.657	312824	234308	539.619	569.570
15) L3 AR-1232-5	6.405	5.842	186312	256468	508.417	529.016

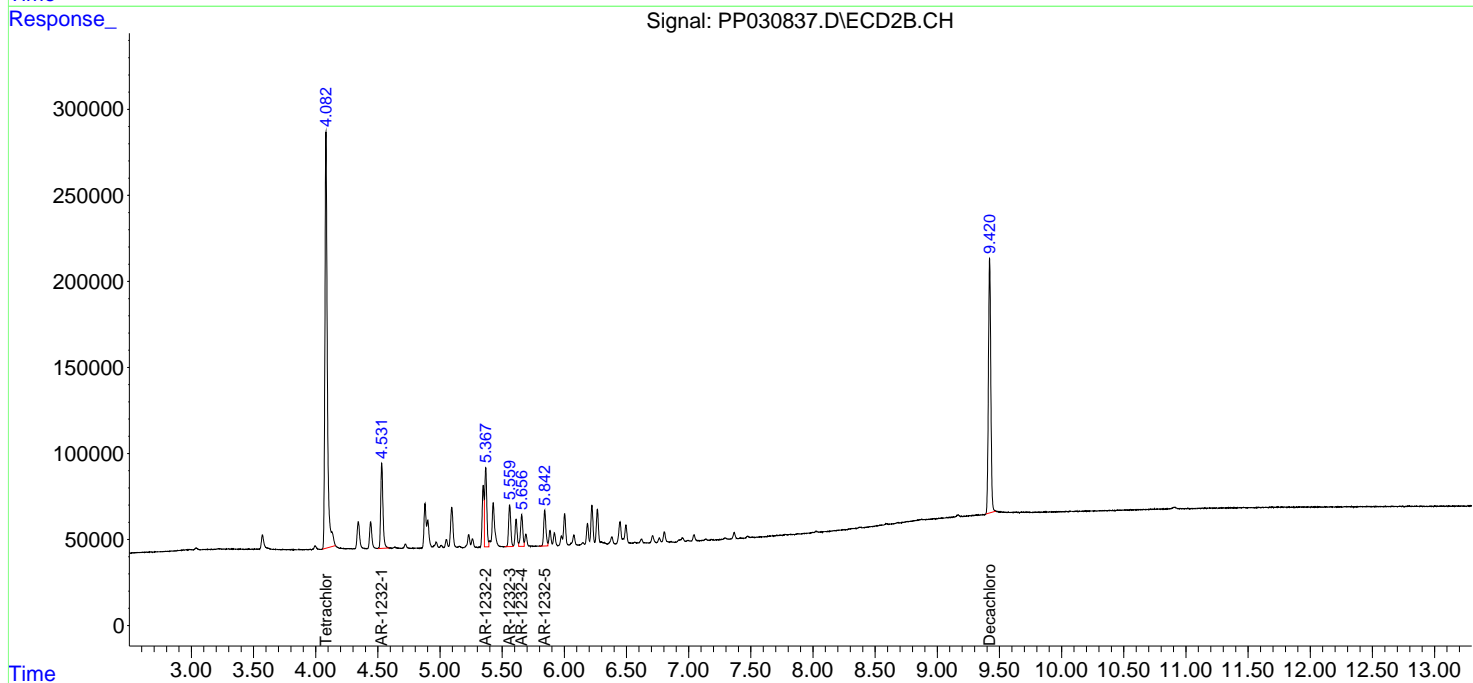
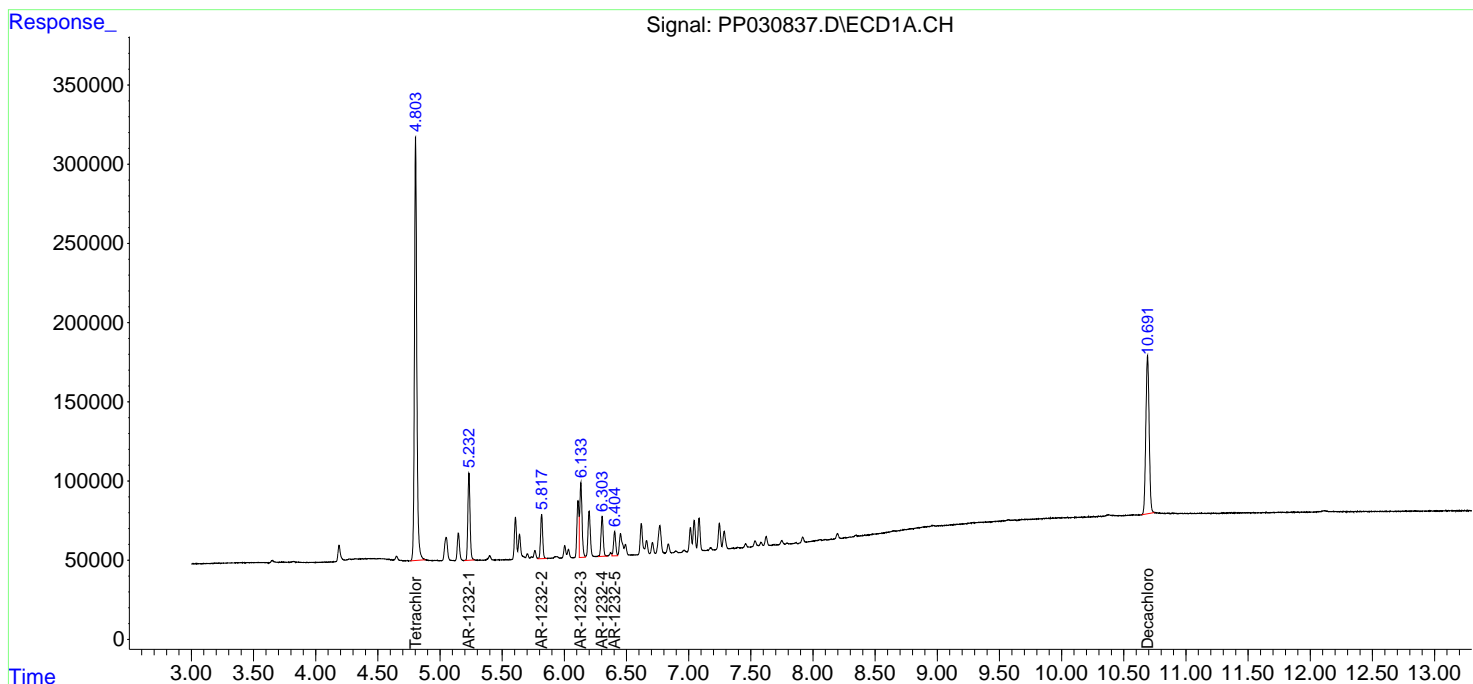
(f)=RT Delta > 1/2 Window (#)=Amounts differ by > 25% (m)=manual int.

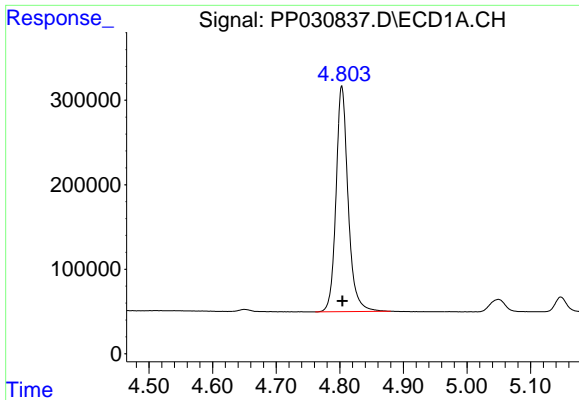
Data Path : Z:\pestpcbsrv\HPCHEM1\ECD_P\Data\PP102520\
 Data File : PP030837.D
 Signal(s) : Signal #1: ECD1A.CH Signal #2: ECD2B.CH
 Acq On : 24 Oct 2020 15:15
 Operator : DD\AJ
 Sample : AR1232PP102520ICV500
 Misc :
 ALS Vial : 23 Sample Multiplier: 1

Instrument :
 ECD_P
 ClientSampleId :
 ICVPP102520

Integration File signal 1: autoint1.e
 Integration File signal 2: autoint2.e
 Quant Time: Oct 26 04:47:41 2020
 Quant Method : Z:\pestpcbsrv\HPCHEM1\ECD_O\methods\AR1232PP102520.M
 Quant Title : GC EXTRACTABLES
 QLast Update : Mon Oct 26 04:46:19 2020
 Response via : Initial Calibration
 Integrator: ChemStation 6890 Scale Mode: Small noise peaks clipped

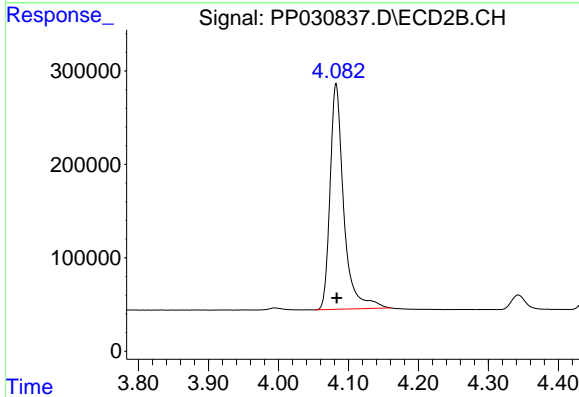
Volume Inj. : 2 µl
 Signal #1 Phase : ZB-MR1 Signal #2 Phase: ZB-MR2
 Signal #1 Info : 30Mx0.32mmx 0.50µ Signal #2 Info : 30M x 0.32mm x 0.25µm



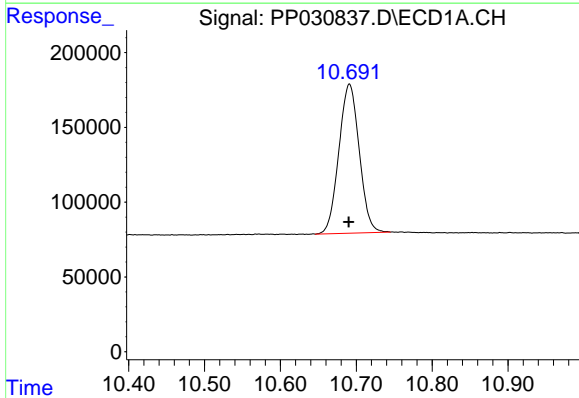


#1 Tetrachloro-m-xylene
 R.T.: 4.803 min
 Delta R.T.: 0.000 min
 Response: 3524317
 Conc: 52.57 ng/ml

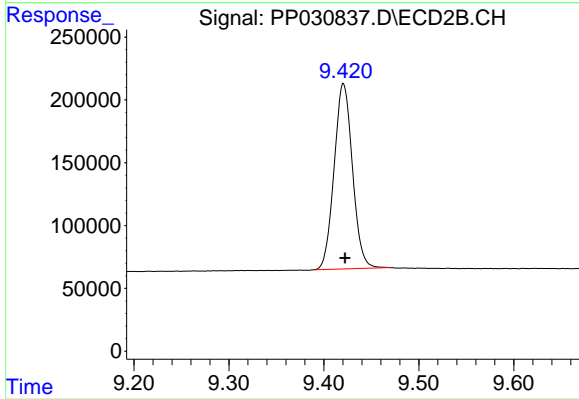
Instrument :
 ECD_P
 ClientSampleId :
 ICVPP102520



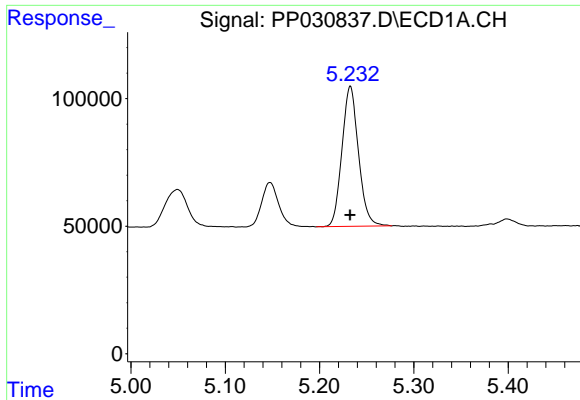
#1 Tetrachloro-m-xylene
 R.T.: 4.082 min
 Delta R.T.: -0.001 min
 Response: 3273309
 Conc: 52.64 ng/ml



#2 Decachlorobiphenyl
 R.T.: 10.691 min
 Delta R.T.: 0.000 min
 Response: 1858397
 Conc: 50.60 ng/ml



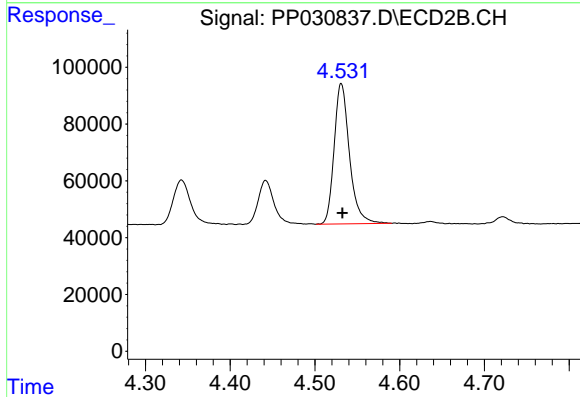
#2 Decachlorobiphenyl
 R.T.: 9.421 min
 Delta R.T.: -0.002 min
 Response: 1979979
 Conc: 50.04 ng/ml



#11 AR-1232-1

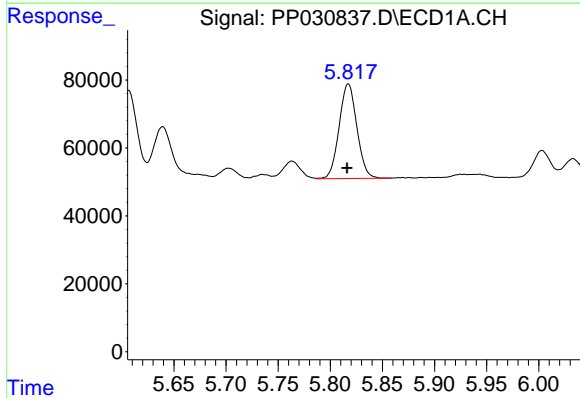
R.T.: 5.233 min
 Delta R.T.: 0.000 min
 Response: 668426
 Conc: 513.23 ng/ml

Instrument :
 ECD_P
 ClientSampleId :
 ICVPP102520



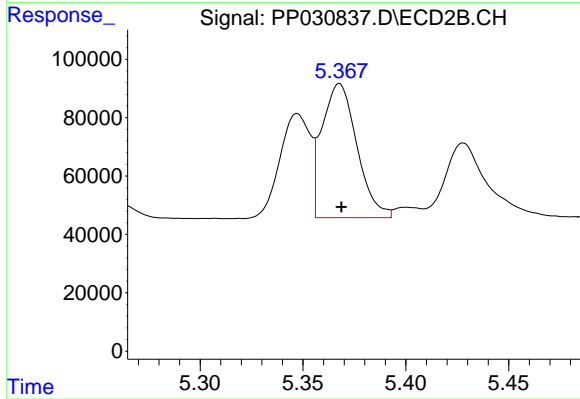
#11 AR-1232-1

R.T.: 4.531 min
 Delta R.T.: -0.001 min
 Response: 621273
 Conc: 524.72 ng/ml



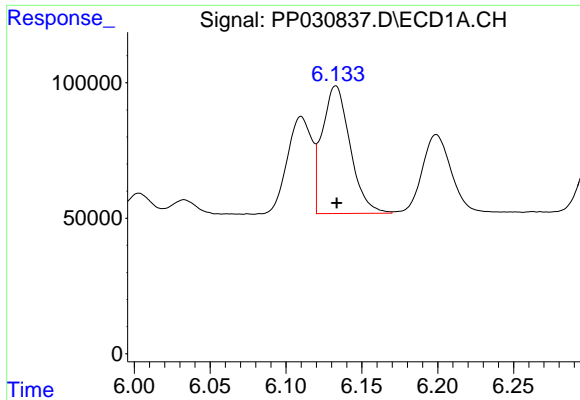
#12 AR-1232-2

R.T.: 5.817 min
 Delta R.T.: 0.001 min
 Response: 330235
 Conc: 531.89 ng/ml



#12 AR-1232-2

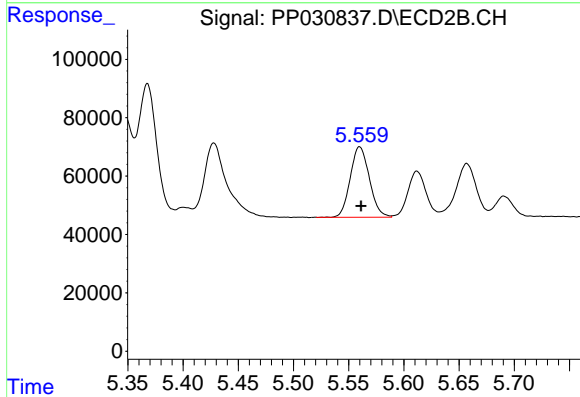
R.T.: 5.368 min
 Delta R.T.: -0.001 min
 Response: 541990
 Conc: 516.90 ng/ml



#13 AR-1232-3

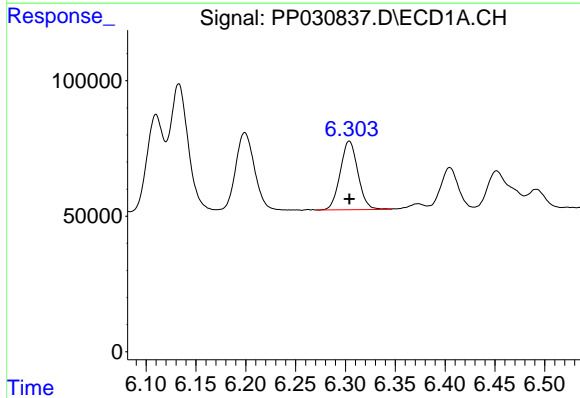
R.T.: 6.133 min
 Delta R.T.: 0.000 min
 Response: 603248
 Conc: 519.34 ng/ml

Instrument :
 ECD_P
 ClientSampleId :
 ICVPP102520



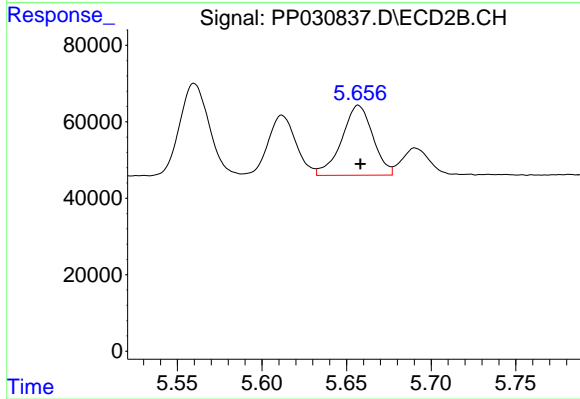
#13 AR-1232-3

R.T.: 5.560 min
 Delta R.T.: -0.001 min
 Response: 291430
 Conc: 543.32 ng/ml



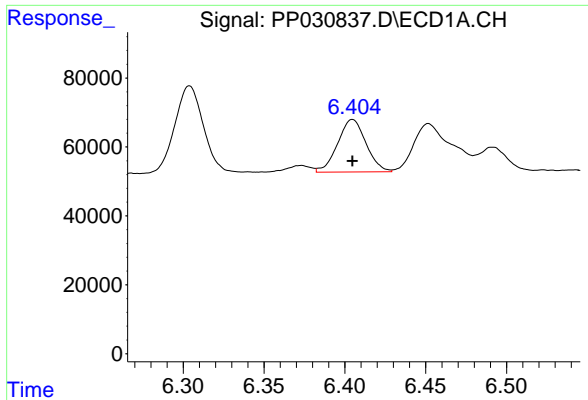
#14 AR-1232-4

R.T.: 6.304 min
 Delta R.T.: 0.000 min
 Response: 312824
 Conc: 539.62 ng/ml



#14 AR-1232-4

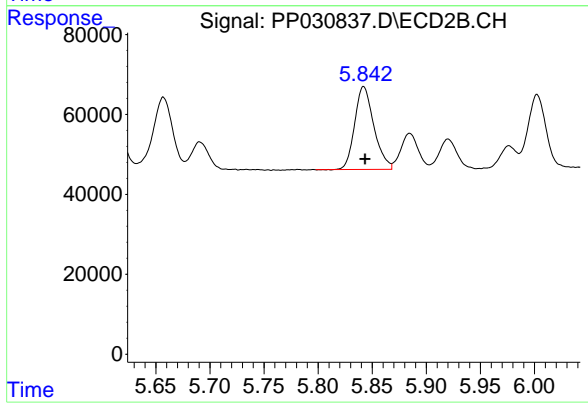
R.T.: 5.657 min
 Delta R.T.: -0.001 min
 Response: 234308
 Conc: 569.57 ng/ml



#15 AR-1232-5

R.T.: 6.405 min
Delta R.T.: 0.000 min
Response: 186312
Conc: 508.42 ng/ml

Instrument :
ECD_P
ClientSampleId :
ICVPP102520



#15 AR-1232-5

R.T.: 5.842 min
Delta R.T.: -0.001 min
Response: 256468
Conc: 529.02 ng/ml