

Data Path : Z:\pestpcbsrv\HPCHEM1\ECD_P\Data\PP102718\
 Data File : PP027886.D
 Signal(s) : Signal #1: ECD1A.CH Signal #2: ECD2B.CH
 Acq On : 27 Oct 2018 17:31
 Operator : EI\MA
 Sample : I.BLK
 Misc :
 ALS Vial : 2 Sample Multiplier: 1

Instrument :
 ECD_P
 ClientSampleId :

Integration File signal 1: autoint1.e
 Integration File signal 2: autoint2.e
 Quant Time: Oct 29 03:31:53 2018
 Quant Method : Z:\pestpcbsrv\HPCHEM1\ECD_P\methods\PP102418.M
 Quant Title : 8080.M
 QLast Update : Wed Oct 24 12:31:02 2018
 Response via : Initial Calibration
 Integrator: ChemStation 6890 Scale Mode: Large solvent peaks clipped

Volume Inj. : 2 µl
 Signal #1 Phase : ZB-CLPesticides-1 Signal #2 Phase: ZB-CLPesticides-2
 Signal #1 Info : 30M x 0.32mm x0.5 Signal #2 Info : 30M x 0.32mm x 0.25µm

Compound	RT#1	RT#2	Resp#1	Resp#2	ng/ml	ng/ml

System Monitoring Compounds						
4) S 2,4-DCAA	12.161	12.272	111.6E6	181.1E6	423.582	455.201
Target Compounds						
14) T DINOSEB	18.011	0.000	182.3E6	0	81.766	N.D. #
15) T Picloram	17.739	0.000	1189.0E6	0	252.171	N.D. #

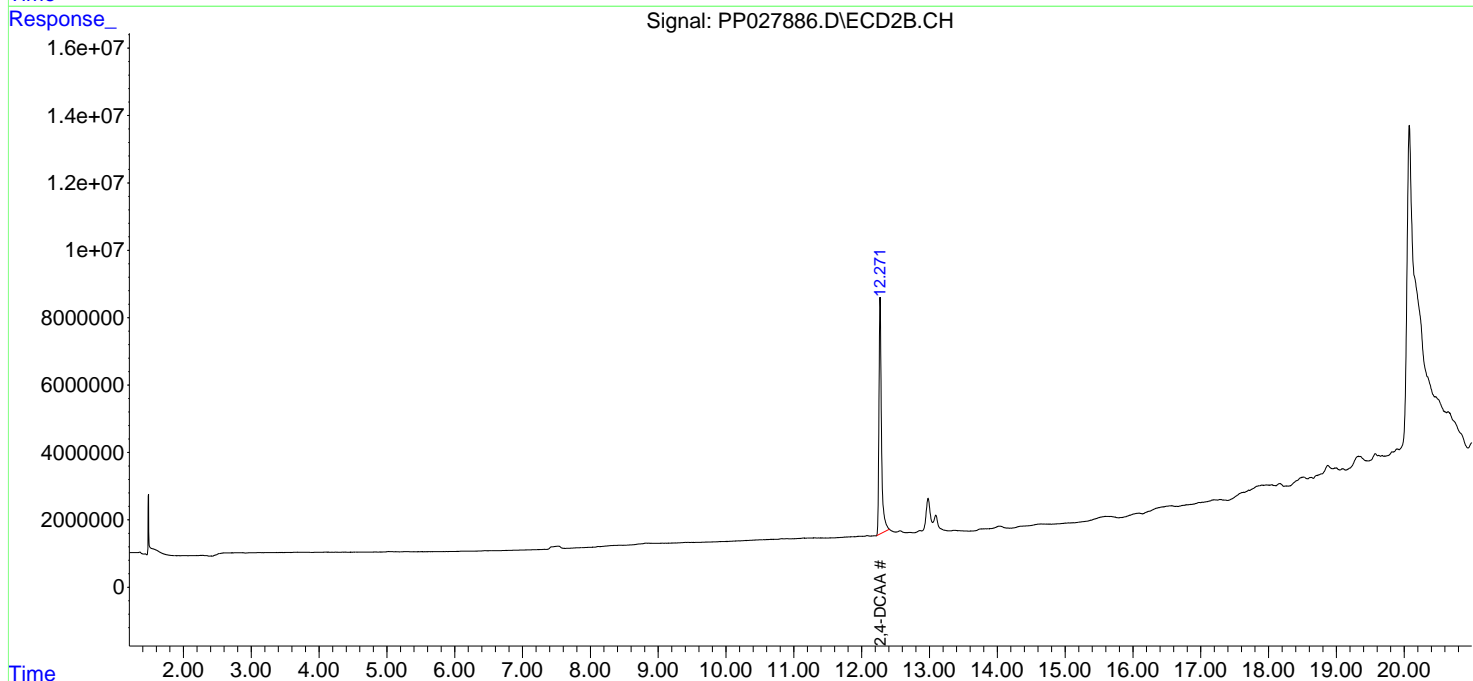
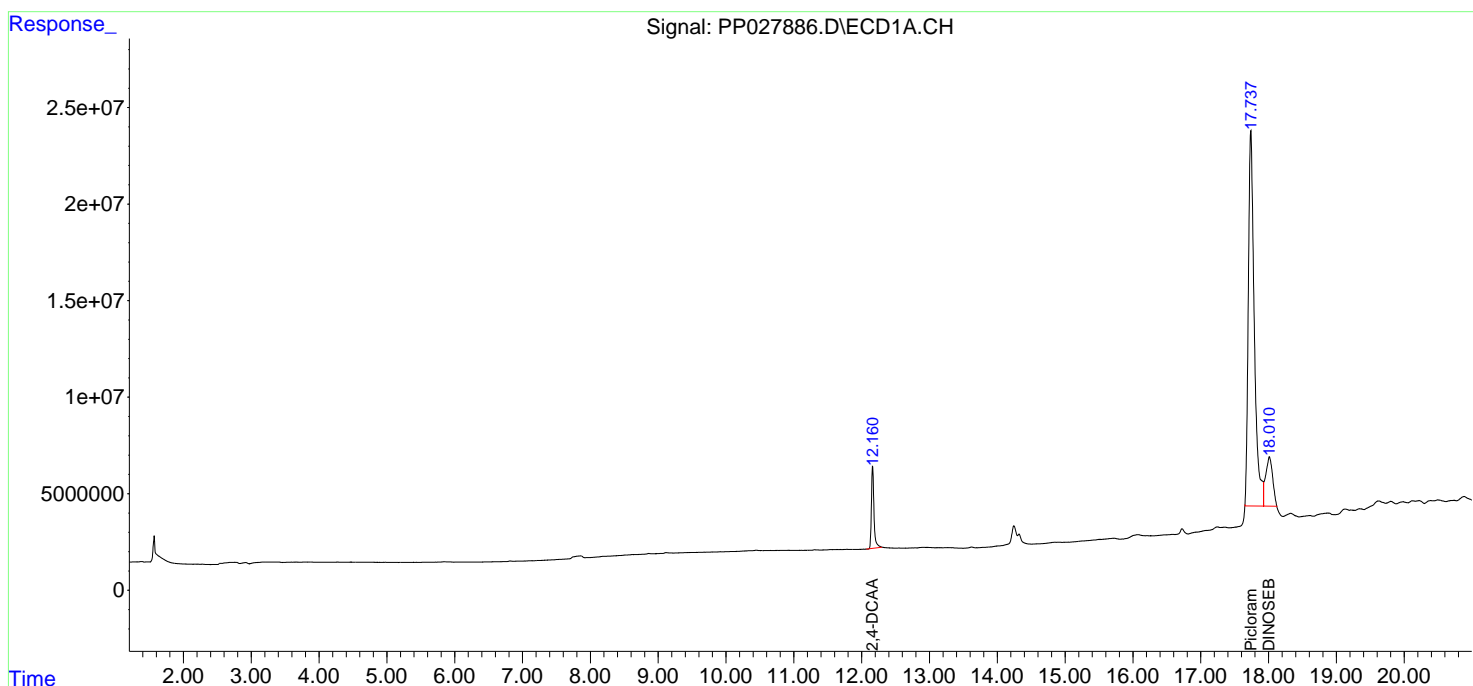
(f)=RT Delta > 1/2 Window (#)=Amounts differ by > 25% (m)=manual int.

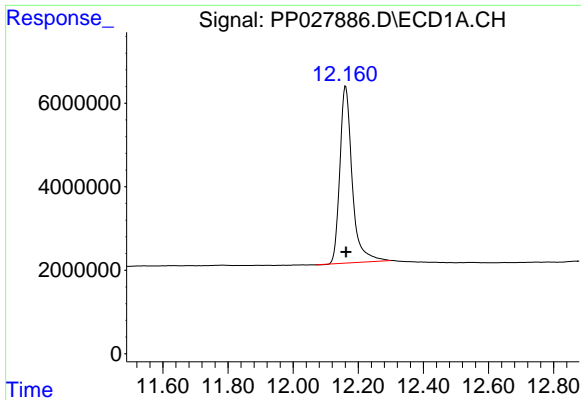
Data Path : Z:\pestpcbsrv\HPCHEM1\ECD_P\Data\PP102718\
 Data File : PP027886.D
 Signal(s) : Signal #1: ECD1A.CH Signal #2: ECD2B.CH
 Acq On : 27 Oct 2018 17:31
 Operator : EI\MA
 Sample : I.BLK
 Misc :
 ALS Vial : 2 Sample Multiplier: 1

Instrument :
 ECD_P
 ClientSampled :

Integration File signal 1: autoint1.e
 Integration File signal 2: autoint2.e
 Quant Time: Oct 29 03:31:53 2018
 Quant Method : Z:\pestpcbsrv\HPCHEM1\ECD_P\methods\PP102418.M
 Quant Title : 8080.M
 QLast Update : Wed Oct 24 12:31:02 2018
 Response via : Initial Calibration
 Integrator: ChemStation 6890 Scale Mode: Large solvent peaks clipped

Volume Inj. : 2 µl
 Signal #1 Phase : ZB-CLPesticides-1 Signal #2 Phase: ZB-CLPesticides-2
 Signal #1 Info : 30M x 0.32mm x 0.5 Signal #2 Info : 30M x 0.32mm x 0.25µm

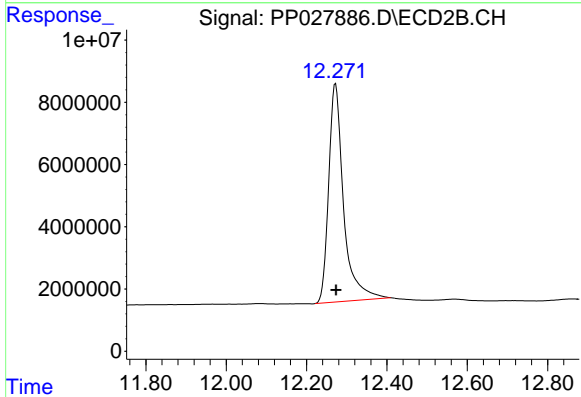




#4 2,4-DCAA

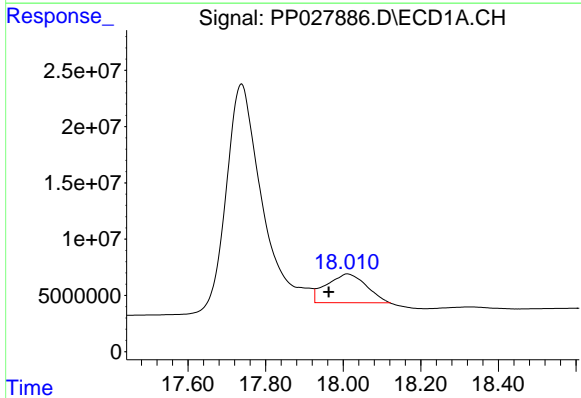
R.T.: 12.161 min
 Delta R.T.: 0.000 min
 Response: 111568072
 Conc: 423.58 ng/ml

Instrument :
 ECD_P
 ClientSampled :



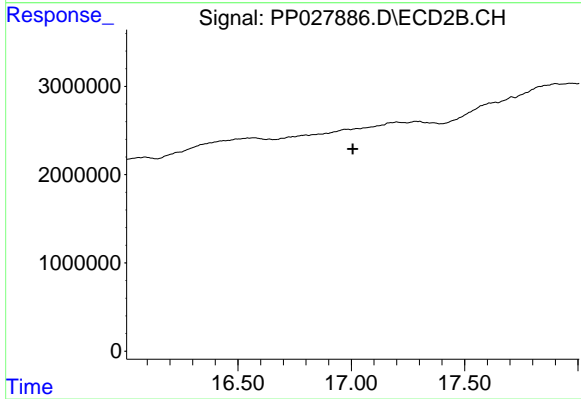
#4 2,4-DCAA

R.T.: 12.272 min
 Delta R.T.: 0.000 min
 Response: 181111045
 Conc: 455.20 ng/ml



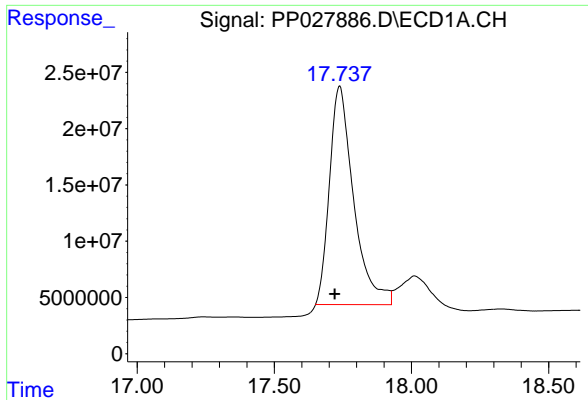
#14 DINOSEB

R.T.: 18.011 min
 Delta R.T.: 0.048 min
 Response: 182342697
 Conc: 81.77 ng/ml



#14 DINOSEB

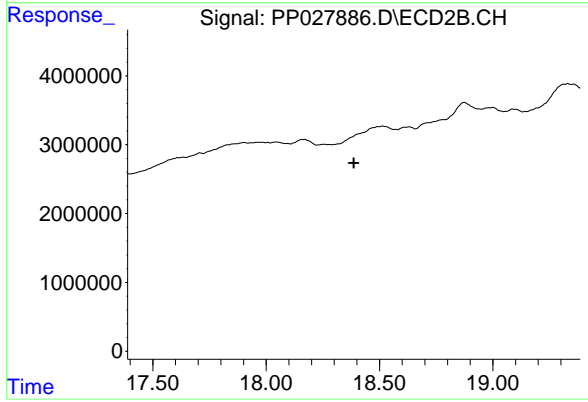
R.T.: 0.000 min
 Exp R.T. : 17.007 min
 Response: 0
 Conc: N.D.



#15 Picloram

R.T.: 17.739 min
Delta R.T.: 0.018 min
Response: 1189023536
Conc: 252.17 ng/ml

Instrument :
ECD_P
ClientSampleId :



#15 Picloram

R.T.: 0.000 min
Exp R.T. : 18.386 min
Response: 0
Conc: N.D.