

Data Path : Z:\pestpcbsrv\HPCHEM1\ECD_P\Data\PP102821\
 Data File : PP040515.D
 Signal(s) : Signal #1: ECD1A.CH Signal #2: ECD2B.CH
 Acq On : 28 Oct 2021 16:19
 Operator : AJ\MA
 Sample : PB140316BS
 Misc :
 ALS Vial : 15 Sample Multiplier: 1

Instrument :
 ECD_P
 ClientSampleId :
 PB140316BS

Integration File signal 1: autoint1.e
 Integration File signal 2: autoint2.e
 Quant Time: Oct 28 17:52:37 2021
 Quant Method : Z:\pestpcbsrv\HPCHEM1\ECD_P\methods\PP102621.M
 Quant Title : GC EXTRACTABLES
 QLast Update : Thu Oct 28 08:58:45 2021
 Response via : Initial Calibration
 Integrator: ChemStation 6890 Scale Mode: Small noise peaks clipped

Volume Inj. : 2 µl
 Signal #1 Phase : ZB-MR1 Signal #2 Phase: ZB-MR2
 Signal #1 Info : 30Mx0.32mmx 0.50µ Signal #2 Info : 30M x 0.32mm x 0.25µm

Compound	RT#1	RT#2	Resp#1	Resp#2	ng/ml	ng/ml

System Monitoring Compounds						
1) SA Tetrachlo...	4.750	3.772	888487	478595	21.814	17.568
2) SA Decachlor...	10.681	9.057	634600	566785	20.947	20.202
Target Compounds						
3) L1 AR-1016-1	6.071	5.023	603853	377917	471.352	382.916
4) L1 AR-1016-2	6.094	5.042	923712	535390	461.765	367.667
5) L1 AR-1016-3	6.160	5.234	580903	299154	462.562	373.451
6) L1 AR-1016-4	6.267	5.287	483477	238515	489.054	359.301 #
7) L1 AR-1016-5	6.582	5.515	466435	303753	481.077	412.241
31) L7 AR-1260-1	7.761	6.614	832415	570988	533.407	399.411 #
32) L7 AR-1260-2	8.028	6.813	969212	674151	525.907	402.739
33) L7 AR-1260-3	8.394	6.967	620780	639751	447.619	404.557
34) L7 AR-1260-4	8.624	7.452	741125	486178	469.389	359.690
35) L7 AR-1260-5	8.941	7.703	1322558	1106520	448.715	368.543

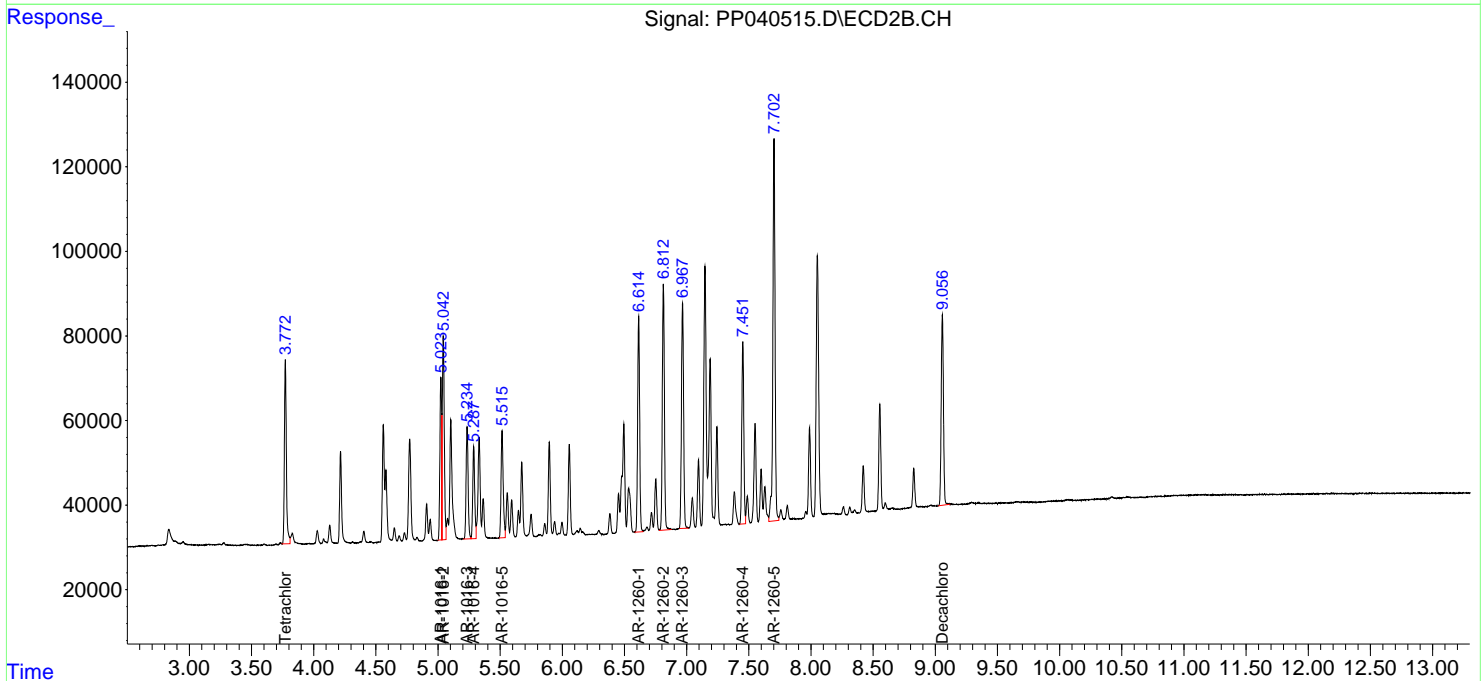
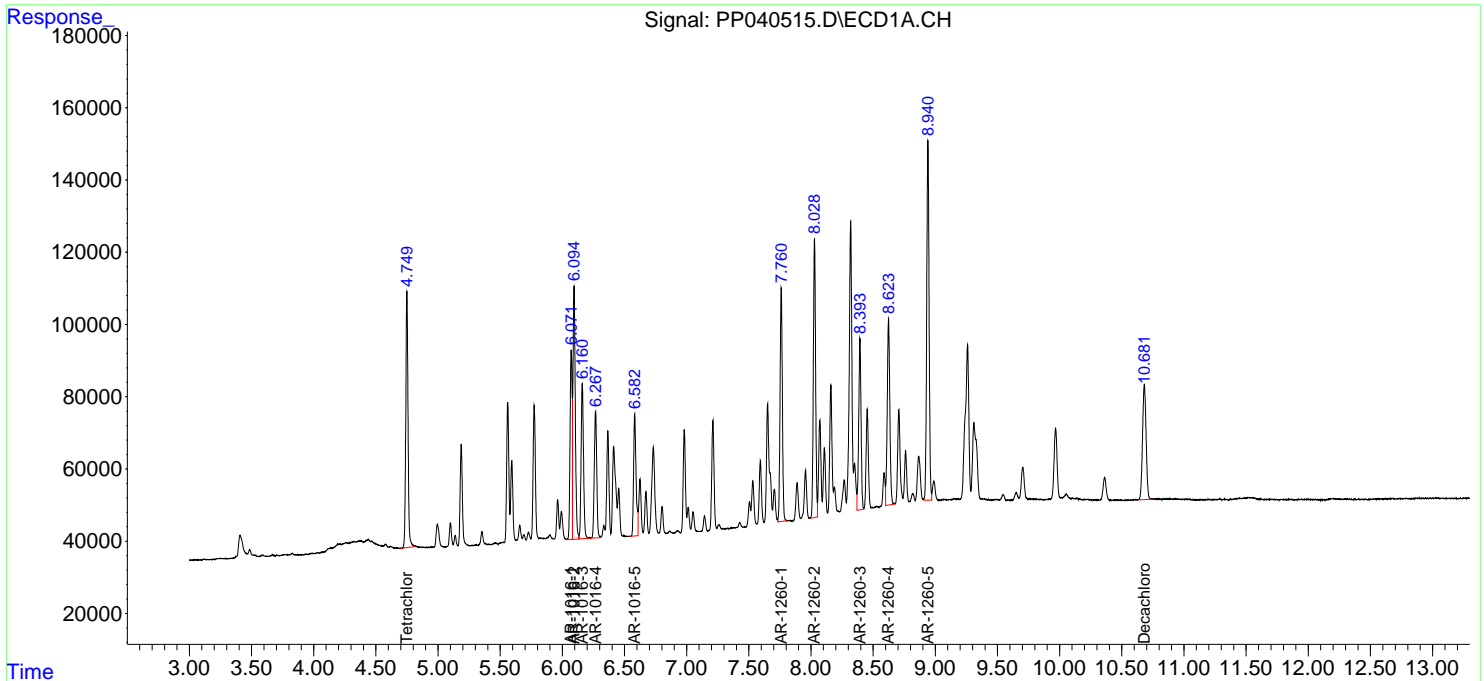
(f)=RT Delta > 1/2 Window (#)=Amounts differ by > 25% (m)=manual int.

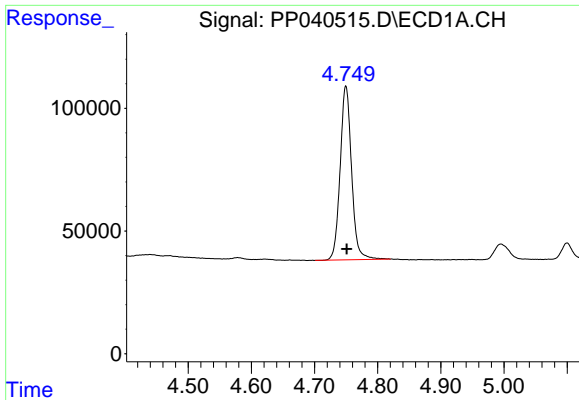
Data Path : Z:\pestpcbsrv\HPCHEM1\ECD_P\Data\PP102821\
 Data File : PP040515.D
 Signal(s) : Signal #1: ECD1A.CH Signal #2: ECD2B.CH
 Acq On : 28 Oct 2021 16:19
 Operator : AJ\MA
 Sample : PB140316BS
 Misc :
 ALS Vial : 15 Sample Multiplier: 1

Instrument :
 ECD_P
 ClientSampleId :
 PB140316BS

Integration File signal 1: autoint1.e
 Integration File signal 2: autoint2.e
 Quant Time: Oct 28 17:52:37 2021
 Quant Method : Z:\pestpcbsrv\HPCHEM1\ECD_P\methods\PP102621.M
 Quant Title : GC EXTRACTABLES
 QLast Update : Thu Oct 28 08:58:45 2021
 Response via : Initial Calibration
 Integrator: ChemStation 6890 Scale Mode: Small noise peaks clipped

Volume Inj. : 2 µl
 Signal #1 Phase : ZB-MR1 Signal #2 Phase: ZB-MR2
 Signal #1 Info : 30Mx0.32mmx 0.50µ Signal #2 Info : 30M x 0.32mm x 0.25µm

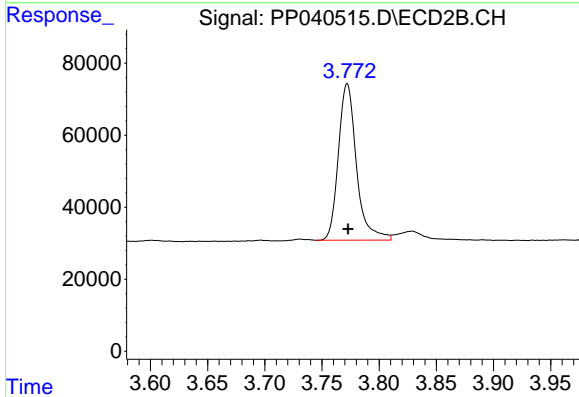




#1 Tetrachloro-m-xylene

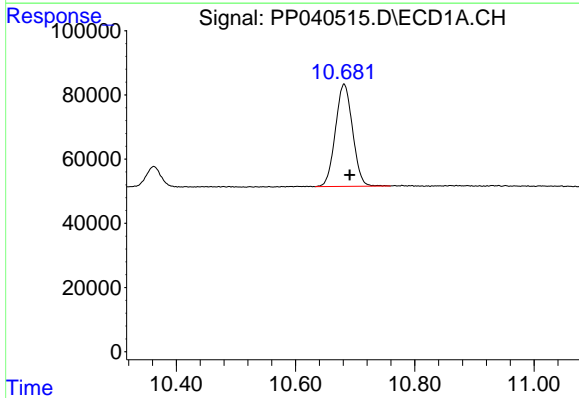
R.T.: 4.750 min
 Delta R.T.: -0.001 min
 Response: 888487
 Conc: 21.81 ng/ml

Instrument :
 ECD_P
 ClientSampleId :
 PB140316BS



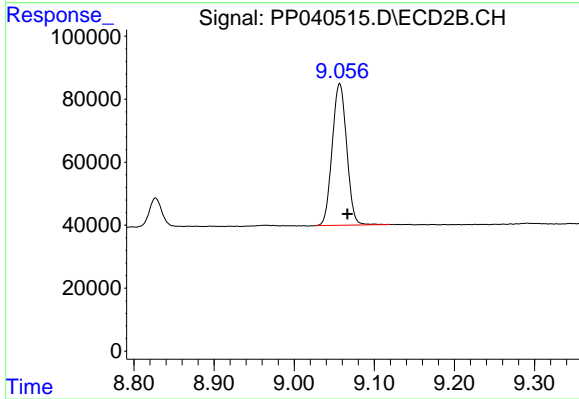
#1 Tetrachloro-m-xylene

R.T.: 3.772 min
 Delta R.T.: 0.000 min
 Response: 478595
 Conc: 17.57 ng/ml



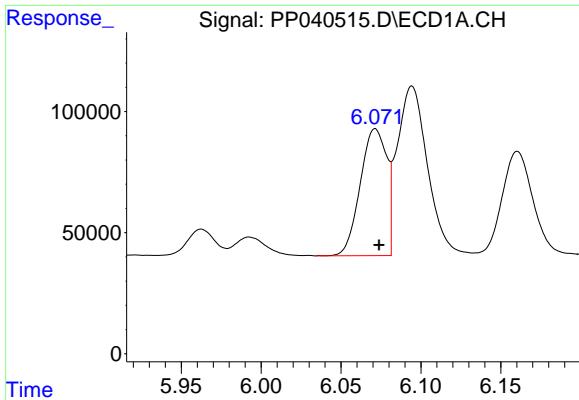
#2 Decachlorobiphenyl

R.T.: 10.681 min
 Delta R.T.: -0.010 min
 Response: 634600
 Conc: 20.95 ng/ml



#2 Decachlorobiphenyl

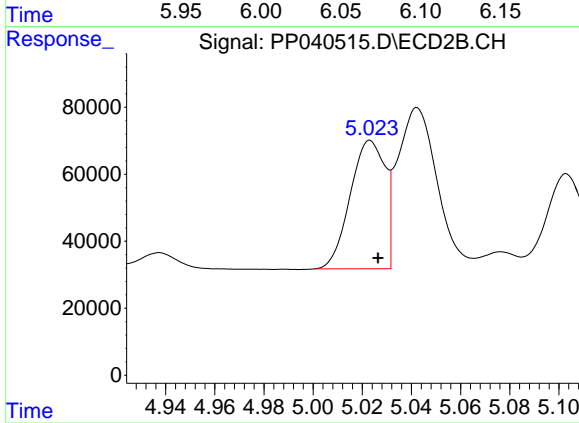
R.T.: 9.057 min
 Delta R.T.: -0.010 min
 Response: 566785
 Conc: 20.20 ng/ml



#3 AR-1016-1

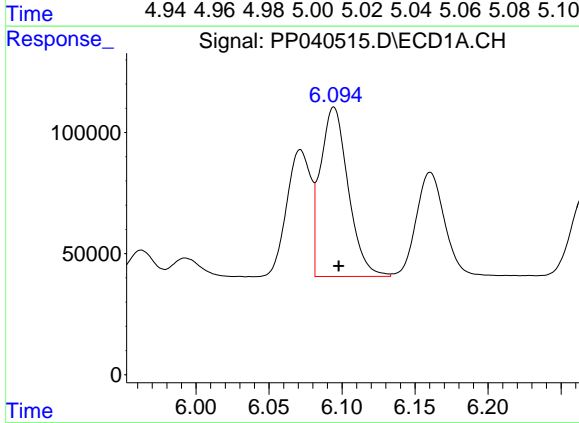
R.T.: 6.071 min
 Delta R.T.: -0.002 min
 Response: 603853
 Conc: 471.35 ng/ml

Instrument :
 ECD_P
 ClientSampleId :
 PB140316BS



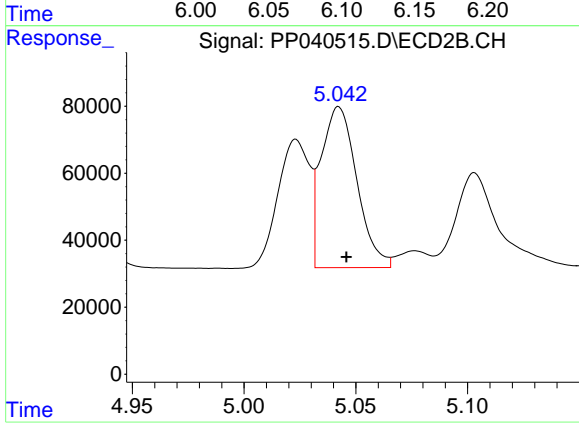
#3 AR-1016-1

R.T.: 5.023 min
 Delta R.T.: -0.003 min
 Response: 377917
 Conc: 382.92 ng/ml



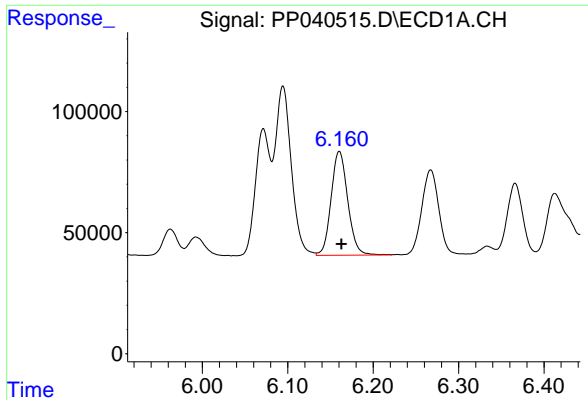
#4 AR-1016-2

R.T.: 6.094 min
 Delta R.T.: -0.003 min
 Response: 923712
 Conc: 461.77 ng/ml



#4 AR-1016-2

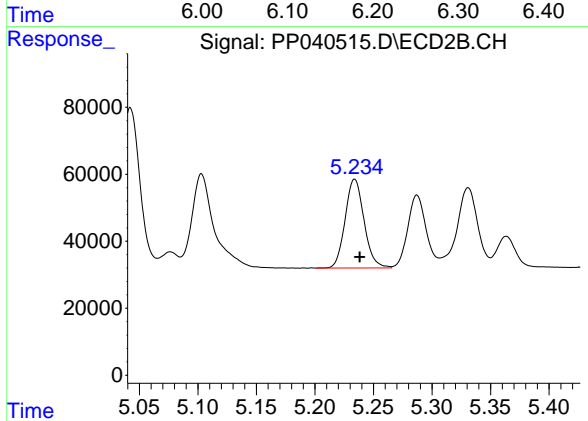
R.T.: 5.042 min
 Delta R.T.: -0.004 min
 Response: 535390
 Conc: 367.67 ng/ml



#5 AR-1016-3

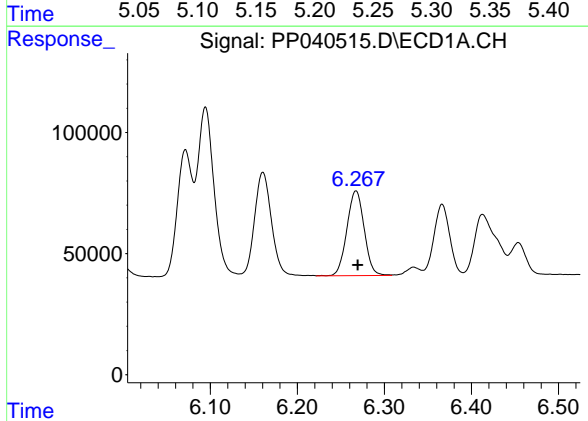
R.T.: 6.160 min
 Delta R.T.: -0.003 min
 Response: 580903
 Conc: 462.56 ng/ml

Instrument :
 ECD_P
 ClientSampleId :
 PB140316BS



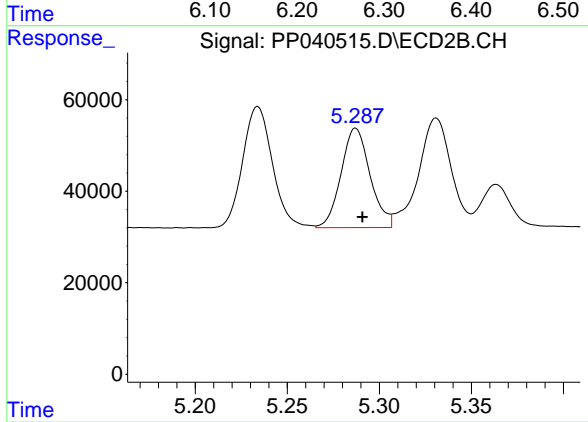
#5 AR-1016-3

R.T.: 5.234 min
 Delta R.T.: -0.004 min
 Response: 299154
 Conc: 373.45 ng/ml



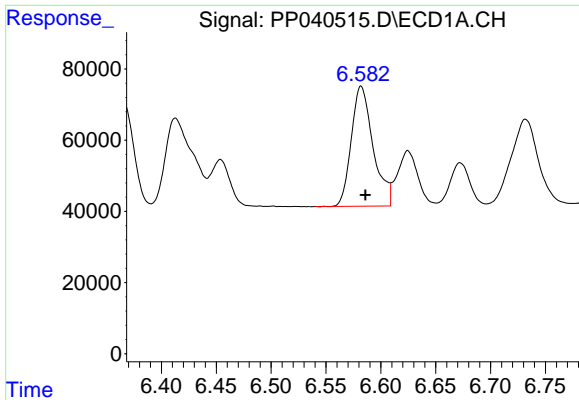
#6 AR-1016-4

R.T.: 6.267 min
 Delta R.T.: -0.002 min
 Response: 483477
 Conc: 489.05 ng/ml



#6 AR-1016-4

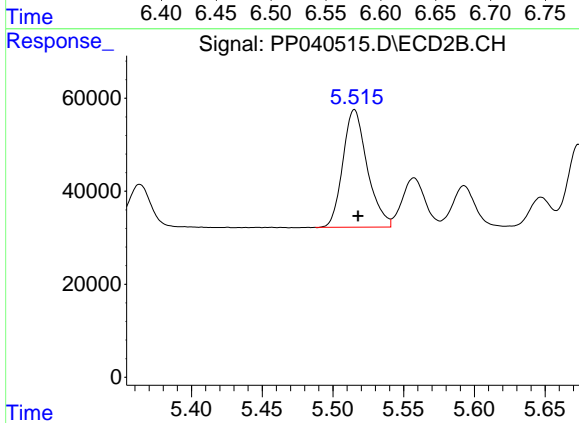
R.T.: 5.287 min
 Delta R.T.: -0.004 min
 Response: 238515
 Conc: 359.30 ng/ml



#7 AR-1016-5

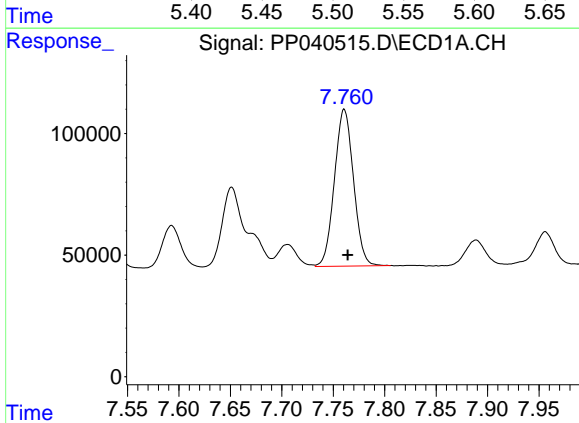
R.T.: 6.582 min
 Delta R.T.: -0.004 min
 Response: 466435
 Conc: 481.08 ng/ml

Instrument :
 ECD_P
 ClientSampleId :
 PB140316BS



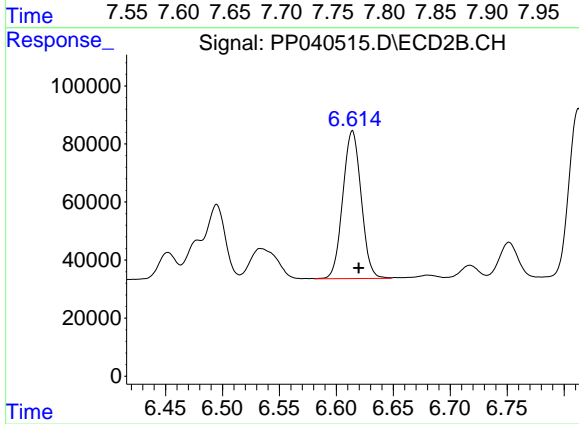
#7 AR-1016-5

R.T.: 5.515 min
 Delta R.T.: -0.003 min
 Response: 303753
 Conc: 412.24 ng/ml



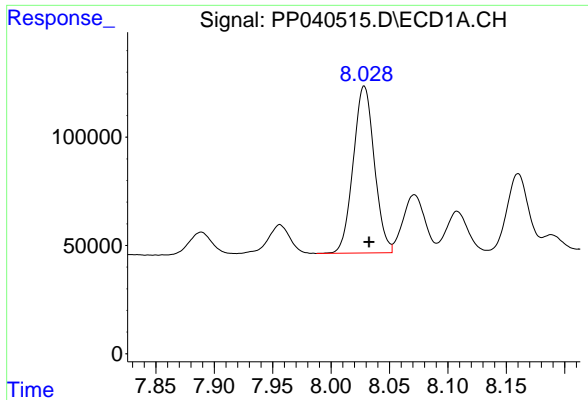
#31 AR-1260-1

R.T.: 7.761 min
 Delta R.T.: -0.003 min
 Response: 832415
 Conc: 533.41 ng/ml



#31 AR-1260-1

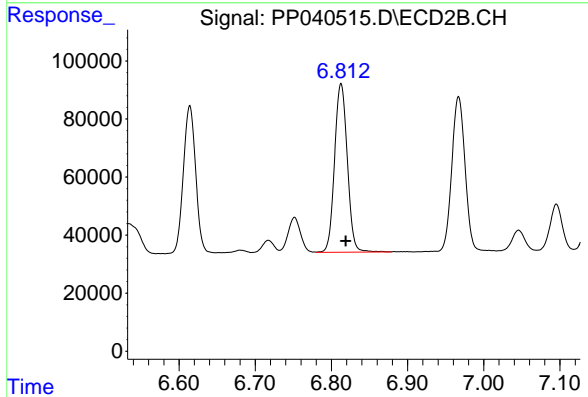
R.T.: 6.614 min
 Delta R.T.: -0.005 min
 Response: 570988
 Conc: 399.41 ng/ml



#32 AR-1260-2

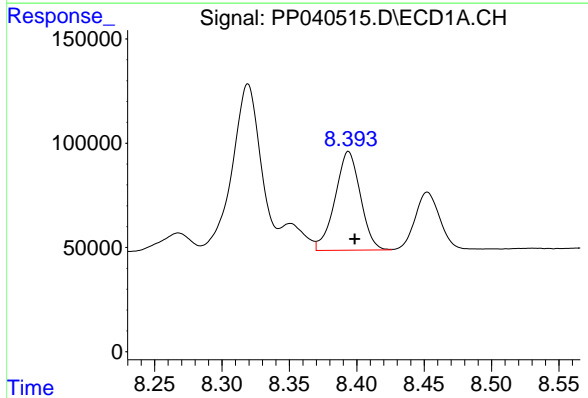
R.T.: 8.028 min
 Delta R.T.: -0.004 min
 Response: 969212
 Conc: 525.91 ng/ml

Instrument :
 ECD_P
 ClientSampleId :
 PB140316BS



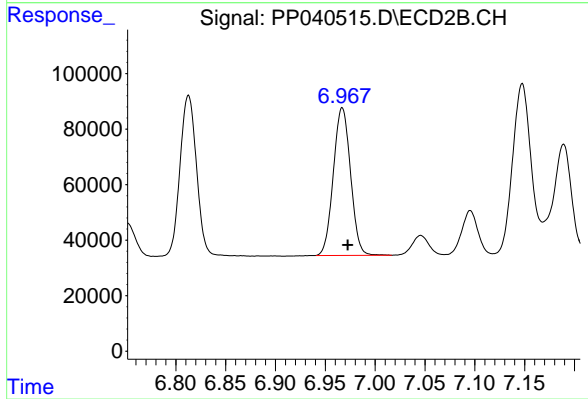
#32 AR-1260-2

R.T.: 6.813 min
 Delta R.T.: -0.006 min
 Response: 674151
 Conc: 402.74 ng/ml



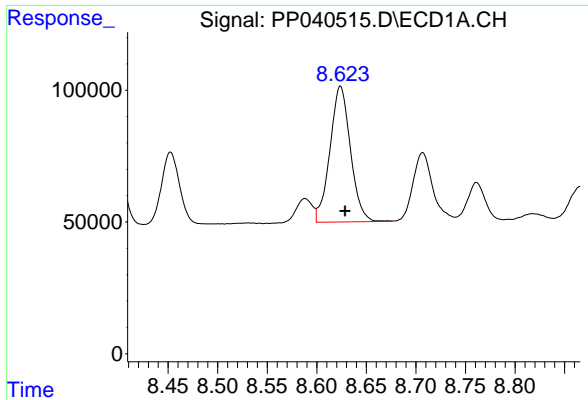
#33 AR-1260-3

R.T.: 8.394 min
 Delta R.T.: -0.005 min
 Response: 620780
 Conc: 447.62 ng/ml



#33 AR-1260-3

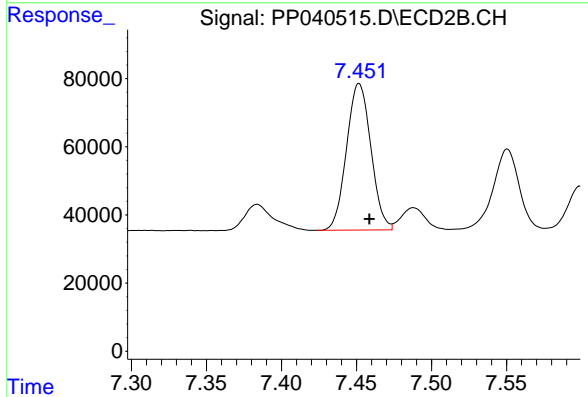
R.T.: 6.967 min
 Delta R.T.: -0.006 min
 Response: 639751
 Conc: 404.56 ng/ml



#34 AR-1260-4

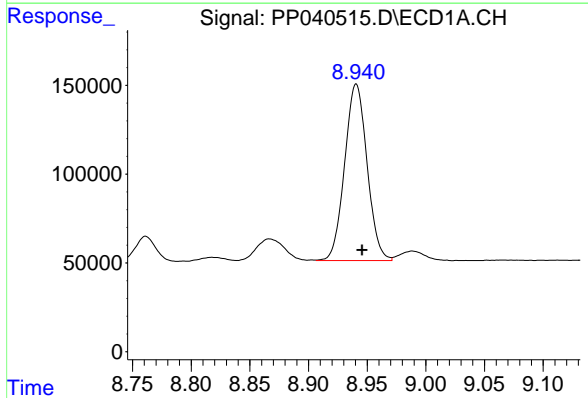
R.T.: 8.624 min
 Delta R.T.: -0.005 min
 Response: 741125
 Conc: 469.39 ng/ml

Instrument :
 ECD_P
 ClientSampleId :
 PB140316BS



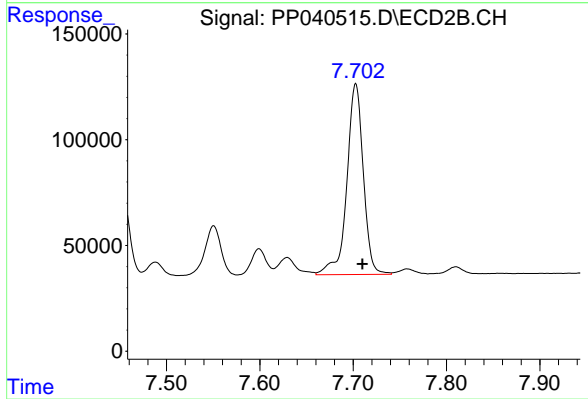
#34 AR-1260-4

R.T.: 7.452 min
 Delta R.T.: -0.007 min
 Response: 486178
 Conc: 359.69 ng/ml



#35 AR-1260-5

R.T.: 8.941 min
 Delta R.T.: -0.005 min
 Response: 1322558
 Conc: 448.72 ng/ml



#35 AR-1260-5

R.T.: 7.703 min
 Delta R.T.: -0.007 min
 Response: 1106520
 Conc: 368.54 ng/ml