

Data Path : Z:\pestpcbsrv\HPCHEM1\ECD_P\Data\PP102822\
 Data File : PP052865.D
 Signal(s) : Signal #1: ECD1A.ch Signal #2: ECD2B.ch
 Acq On : 29 Oct 2022 05:41
 Operator : YP\AJ
 Sample : N5313-15
 Misc :
 ALS Vial : 42 Sample Multiplier: 1

Instrument :
 ECD_P
 ClientSampleId :

Integration File signal 1: autoint1.e
 Integration File signal 2: autoint2.e
 Quant Time: Oct 29 09:40:14 2022
 Quant Method : Z:\pestpcbsrv\HPCHEM1\ECD_P\methods\PP102622.M
 Quant Title : GC EXTRACTABLES
 QLast Update : Thu Oct 27 04:46:37 2022
 Response via : Initial Calibration
 Integrator: ChemStation

Volume Inj. : 2 µl
 Signal #1 Phase : ZB-MR1 Signal #2 Phase: ZB-MR2
 Signal #1 Info : 30Mx0.32mmx 0.50µ Signal #2 Info : 30M x 0.32mm x 0.25µm

Compound	RT#1	RT#2	Resp#1	Resp#2	ng/ml	ng/ml
System Monitoring Compounds						
1) SA Tetrachlo...	4.404	3.650	35758494	33788255	16.183	17.980
2) SA Decachlor...	10.207	8.732	18816364	22487824	14.824	13.409
Target Compounds						
3) L1 AR-1016-1	5.578	4.750	3726767	3644561	55.587	55.368
4) L1 AR-1016-2	5.601	4.769	7493620	7316225	75.023	79.694
5) L1 AR-1016-3	5.663	4.947	2573173	3798576	42.280	78.128 #
6) L1 AR-1016-4	5.762	4.990	3472448	3472056	71.705	89.119
7) L1 AR-1016-5	6.058	5.206	4168714	4750503	86.551	94.545
8) L2 AR-1221-1	4.613	3.854f	1862817	367909	72.648	15.673 #
9) L2 AR-1221-2	4.712	3.954	554342	520506	29.141	29.734
10) L2 AR-1221-3	4.794	4.028	479881	346931	8.419	6.391
11) L3 AR-1232-1	4.794	4.028	479881	346931	11.059	8.321
12) L3 AR-1232-2	5.311	4.769	1878506	7316225	75.713	176.479 #
13) L3 AR-1232-3	5.601	4.947	7493620	3798576	171.183	171.879
14) L3 AR-1232-4	5.762	5.032	3472448	4288581	162.676	208.666 #
15) L3 AR-1232-5	5.854	5.206	3046516	4750503	176.993	204.617
16) L4 AR-1242-1	5.578	4.750	3726767	3644561	66.217	65.306
17) L4 AR-1242-2	5.601	4.769	7493620	7316225	90.713	94.859
18) L4 AR-1242-3	5.663	4.947	2573173	3798576	50.596	92.585 #
19) L4 AR-1242-4	5.762	5.032	3472448	4288581	85.719	101.115
20) L4 AR-1242-5	6.503	5.563	4990547	5179990	125.177	102.475
21) L5 AR-1248-1	5.578	4.750	3726767	3644561	91.754	91.059
22) L5 AR-1248-2	5.854	4.990	3046516	3472056	51.185	61.321
23) L5 AR-1248-3	6.058	5.032	4168714	4288581	64.214	73.044
24) L5 AR-1248-4	6.464	5.206	4671613	4750503	72.536	68.222
25) L5 AR-1248-5	6.503	5.605	4990547	4128993	78.780	65.084
26) L6 AR-1254-1	6.436	5.563	3908939	5179990	51.497	48.238
27) L6 AR-1254-2	6.660	5.713	4650680	1651710	41.611	17.280 #
28) L6 AR-1254-3	7.027	6.122	4026150	4793731	36.171	31.376
29) L6 AR-1254-4	7.312	6.352	1527456	1585398	21.691	17.461
30) L6 AR-1254-5	7.753	6.774	13921887	17796937	176.824	127.917 #
31) L7 AR-1260-1	7.191	6.254	2913944	3646007	34.111	35.846
32) L7 AR-1260-2	7.443	6.444	4330150	2849733	46.371	23.433 #
33) L7 AR-1260-3	7.810	6.599	1142622	2105942	18.084	18.054
34) L7 AR-1260-4	8.033	7.076	1889154	1504020	26.384	16.704 #
35) L7 AR-1260-5	8.359	7.319	2286231	3255250	17.987	15.891
36) L8 AR-1262-1	7.810	6.867	1142622	921577	11.920	16.091 #
37) L8 AR-1262-2	8.359	7.076	2286231	1504020	15.369	12.146
38) L8 AR-1262-3	8.689	7.607	1239684	1432993	12.494	14.199
39) L8 AR-1262-4	8.769	7.669	969903	3002351	20.818	16.780
40) L8 AR-1262-5	9.434	8.177	559977	1558878	12.237	20.816 #
41) L9 AR-1268-1	8.689	7.607	1239684	1432993	6.591	4.675 #

Data Path : Z:\pestpcbsrv\HPCHEM1\ECD_P\Data\PP102822\
 Data File : PP052865.D
 Signal(s) : Signal #1: ECD1A.ch Signal #2: ECD2B.ch
 Acq On : 29 Oct 2022 05:41
 Operator : YP\AJ
 Sample : N5313-15
 Misc :
 ALS Vial : 42 Sample Multiplier: 1

Instrument :
 ECD_P
 ClientSampleId :

Integration File signal 1: autoint1.e
 Integration File signal 2: autoint2.e
 Quant Time: Oct 29 09:40:14 2022
 Quant Method : Z:\pestpcbsrv\HPCHEM1\ECD_P\methods\PP102622.M
 Quant Title : GC EXTRACTABLES
 QLast Update : Thu Oct 27 04:46:37 2022
 Response via : Initial Calibration
 Integrator: ChemStation

Volume Inj. : 2 µl
 Signal #1 Phase : ZB-MR1 Signal #2 Phase: ZB-MR2
 Signal #1 Info : 30Mx0.32mmx 0.50µ Signal #2 Info : 30M x 0.32mm x 0.25µm

	Compound	RT#1	RT#2	Resp#1	Resp#2	ng/ml	ng/ml
42)	L9 AR-1268-2	8.769	7.669	969903	3002351	5.926	11.069 #
43)	L9 AR-1268-3	9.020	7.875	22934	297481	0.151	1.269 #
44)	L9 AR-1268-4	9.434	8.177	559977	1558878	11.011	18.352 #
45)	L9 AR-1268-5	9.860f	8.470	547807	658248	1.275	1.004

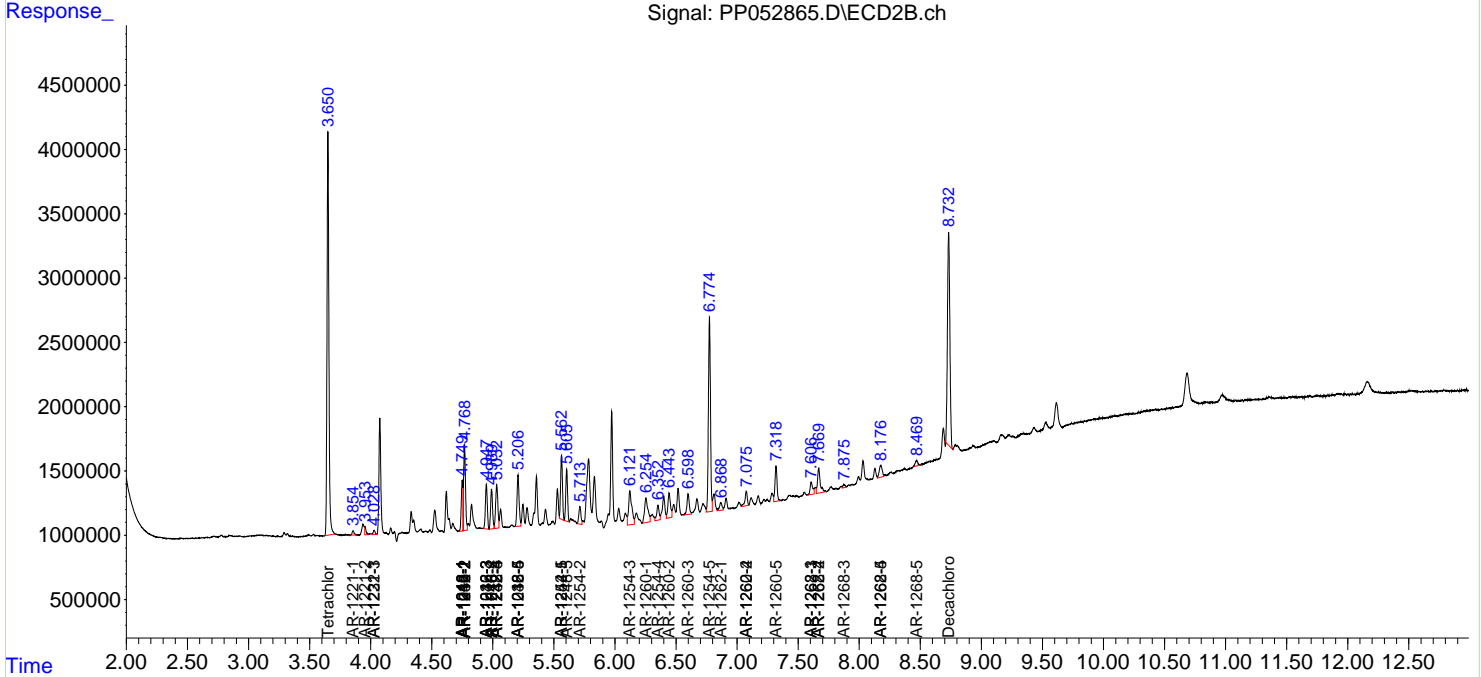
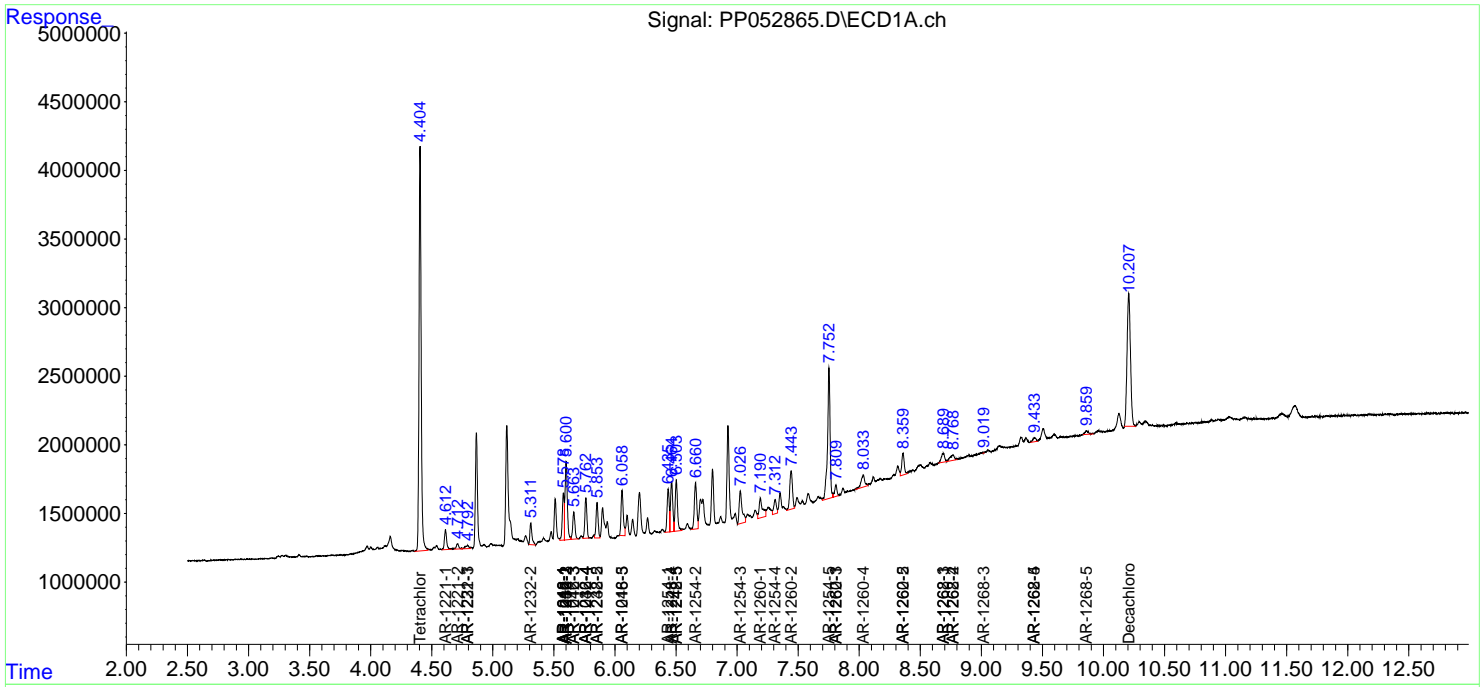
(f)=RT Delta > 1/2 Window (#)=Amounts differ by > 25% (m)=manual int.

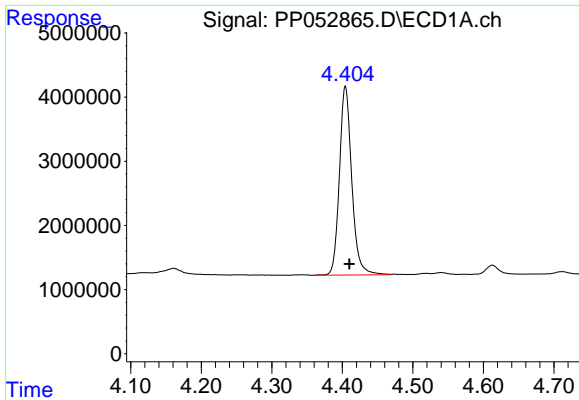
Data Path : Z:\pestpcbsrv\HPCHEM1\ECD_P\Data\PP102822\
 Data File : PP052865.D
 Signal(s) : Signal #1: ECD1A.ch Signal #2: ECD2B.ch
 Acq On : 29 Oct 2022 05:41
 Operator : YP\AJ
 Sample : N5313-15
 Misc :
 ALS Vial : 42 Sample Multiplier: 1

Instrument :
 ECD_P
 ClientSampleId :

Integration File signal 1: autoint1.e
 Integration File signal 2: autoint2.e
 Quant Time: Oct 29 09:40:14 2022
 Quant Method : Z:\pestpcbsrv\HPCHEM1\ECD_P\methods\PP102622.M
 Quant Title : GC EXTRACTABLES
 QLast Update : Thu Oct 27 04:46:37 2022
 Response via : Initial Calibration
 Integrator: ChemStation

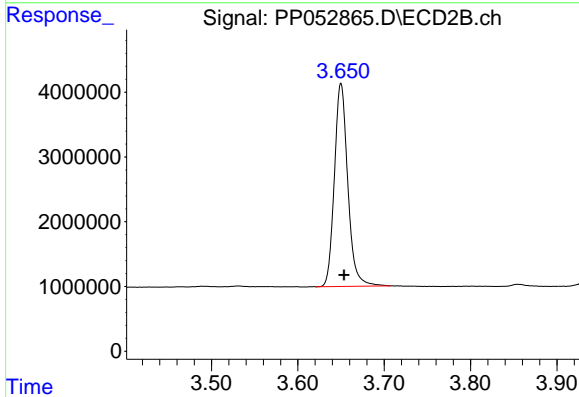
Volume Inj. : 2 µl
 Signal #1 Phase : ZB-MR1 Signal #2 Phase: ZB-MR2
 Signal #1 Info : 30Mx0.32mmx 0.50µ Signal #2 Info : 30M x 0.32mm x 0.25µm



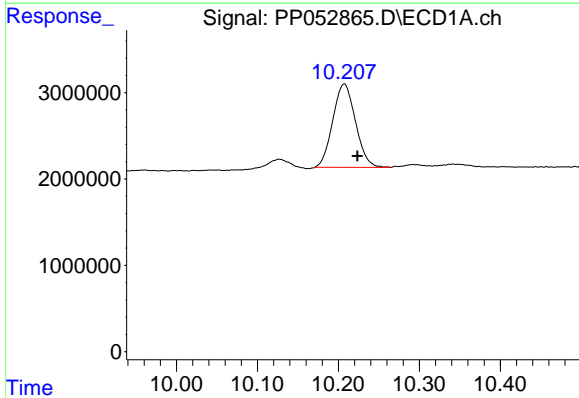


#1 Tetrachloro-m-xylene
 R.T.: 4.404 min
 Delta R.T.: -0.006 min
 Response: 35758494
 Conc: 16.18 ng/ml

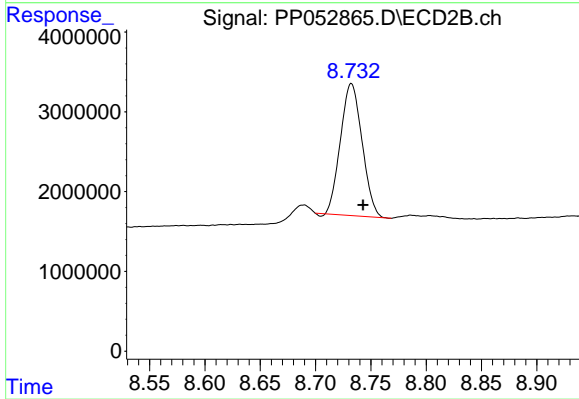
Instrument :
 ECD_P
 ClientSampleId :



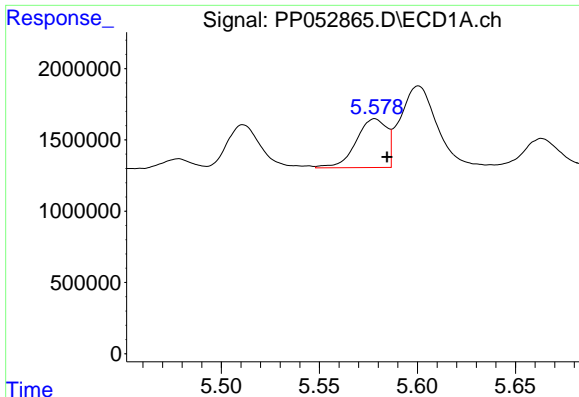
#1 Tetrachloro-m-xylene
 R.T.: 3.650 min
 Delta R.T.: -0.004 min
 Response: 33788255
 Conc: 17.98 ng/ml



#2 Decachlorobiphenyl
 R.T.: 10.207 min
 Delta R.T.: -0.017 min
 Response: 18816364
 Conc: 14.82 ng/ml



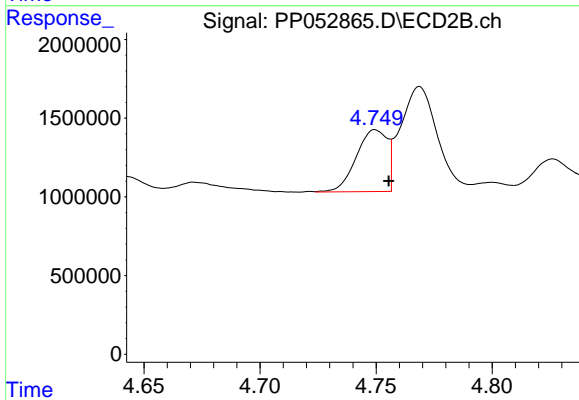
#2 Decachlorobiphenyl
 R.T.: 8.732 min
 Delta R.T.: -0.010 min
 Response: 22487824
 Conc: 13.41 ng/ml



#3 AR-1016-1

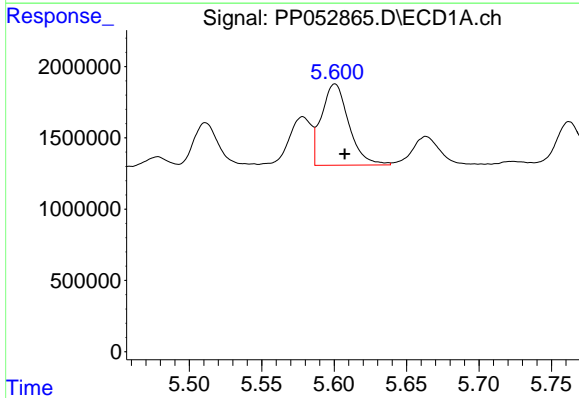
R.T.: 5.578 min
 Delta R.T.: -0.006 min
 Response: 3726767
 Conc: 55.59 ng/ml

Instrument :
 ECD_P
 ClientSampleId :



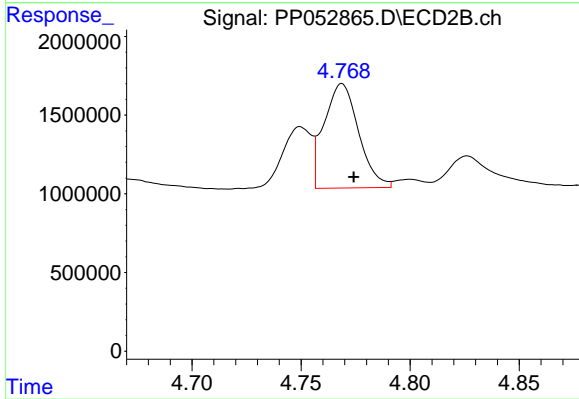
#3 AR-1016-1

R.T.: 4.750 min
 Delta R.T.: -0.006 min
 Response: 3644561
 Conc: 55.37 ng/ml



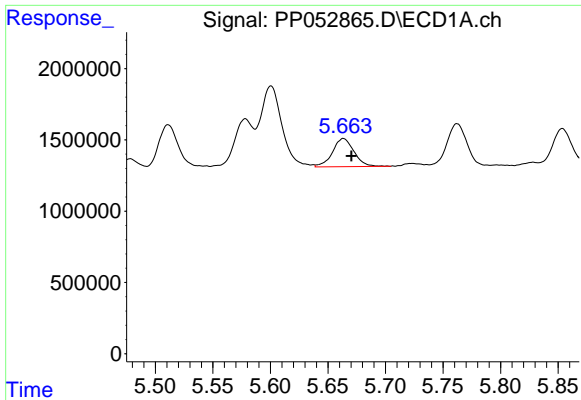
#4 AR-1016-2

R.T.: 5.601 min
 Delta R.T.: -0.007 min
 Response: 7493620
 Conc: 75.02 ng/ml



#4 AR-1016-2

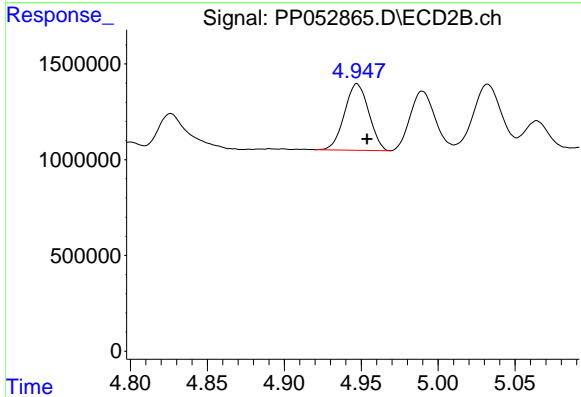
R.T.: 4.769 min
 Delta R.T.: -0.005 min
 Response: 7316225
 Conc: 79.69 ng/ml



#5 AR-1016-3

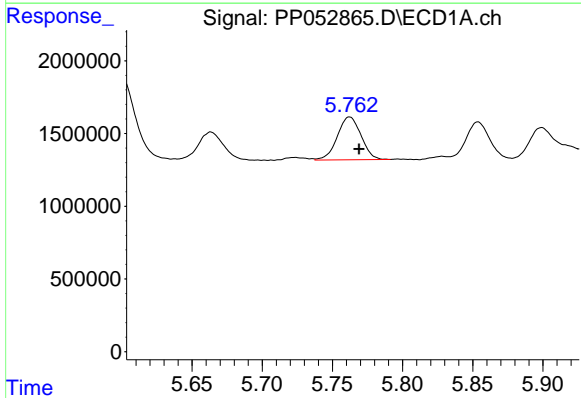
R.T.: 5.663 min
 Delta R.T.: -0.007 min
 Response: 2573173
 Conc: 42.28 ng/ml

Instrument :
 ECD_P
 ClientSampleId :



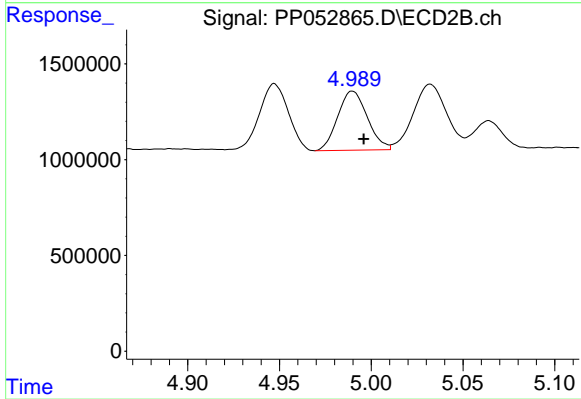
#5 AR-1016-3

R.T.: 4.947 min
 Delta R.T.: -0.007 min
 Response: 3798576
 Conc: 78.13 ng/ml



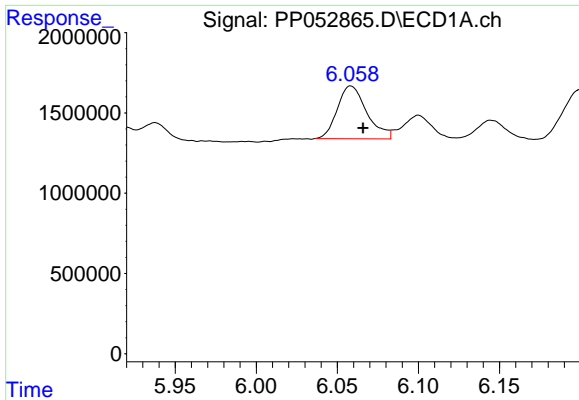
#6 AR-1016-4

R.T.: 5.762 min
 Delta R.T.: -0.007 min
 Response: 3472448
 Conc: 71.71 ng/ml



#6 AR-1016-4

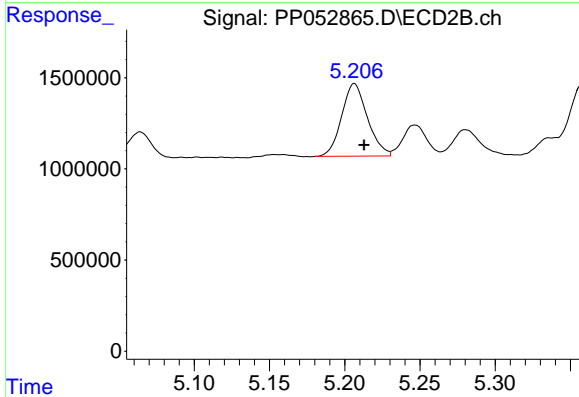
R.T.: 4.990 min
 Delta R.T.: -0.006 min
 Response: 3472056
 Conc: 89.12 ng/ml



#7 AR-1016-5

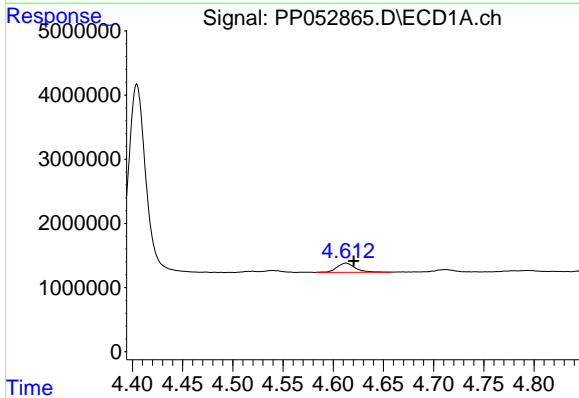
R.T.: 6.058 min
 Delta R.T.: -0.008 min
 Response: 4168714
 Conc: 86.55 ng/ml

Instrument :
 ECD_P
 ClientSampleId :



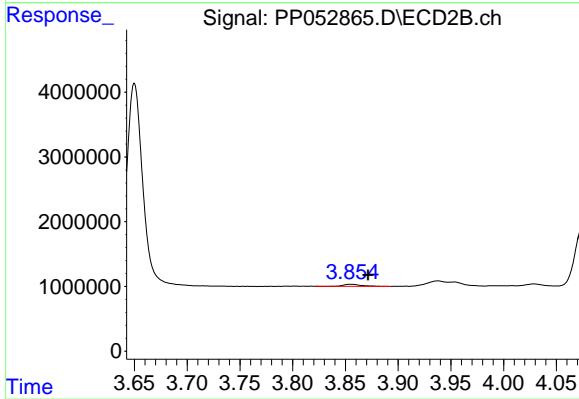
#7 AR-1016-5

R.T.: 5.206 min
 Delta R.T.: -0.006 min
 Response: 4750503
 Conc: 94.54 ng/ml



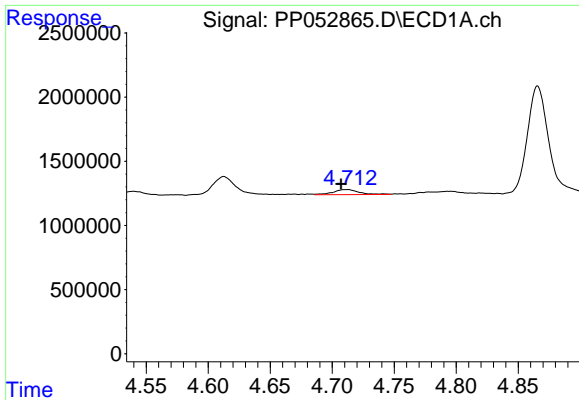
#8 AR-1221-1

R.T.: 4.613 min
 Delta R.T.: -0.008 min
 Response: 1862817
 Conc: 72.65 ng/ml



#8 AR-1221-1

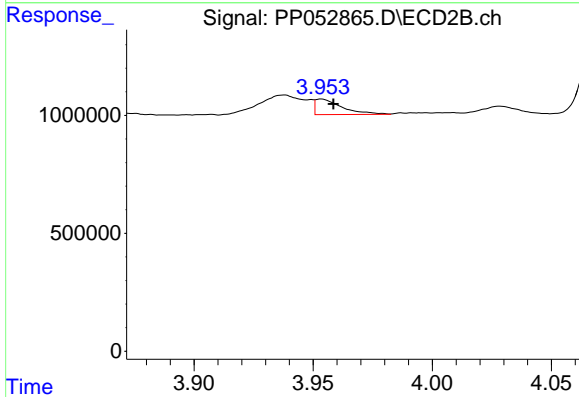
R.T.: 3.854 min
 Delta R.T.: -0.017 min
 Response: 367909
 Conc: 15.67 ng/ml



#9 AR-1221-2

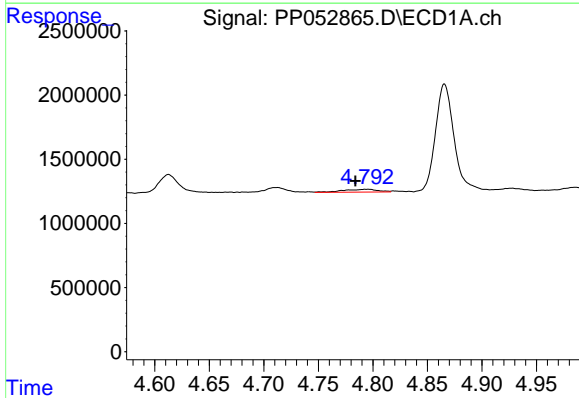
R.T.: 4.712 min
 Delta R.T.: 0.005 min
 Response: 554342
 Conc: 29.14 ng/ml

Instrument :
 ECD_P
 ClientSampleId :



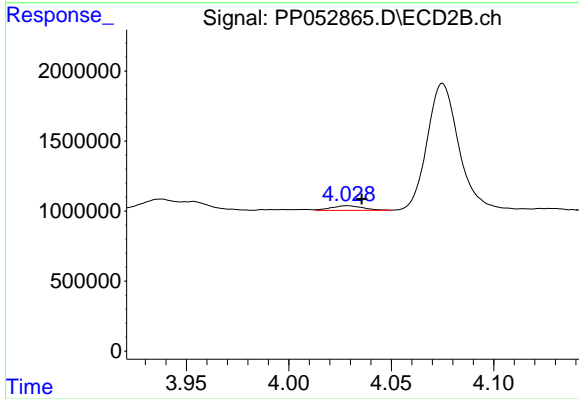
#9 AR-1221-2

R.T.: 3.954 min
 Delta R.T.: -0.005 min
 Response: 520506
 Conc: 29.73 ng/ml



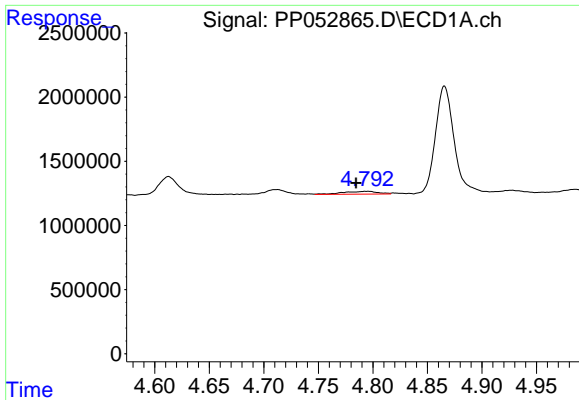
#10 AR-1221-3

R.T.: 4.794 min
 Delta R.T.: 0.010 min
 Response: 479881
 Conc: 8.42 ng/ml



#10 AR-1221-3

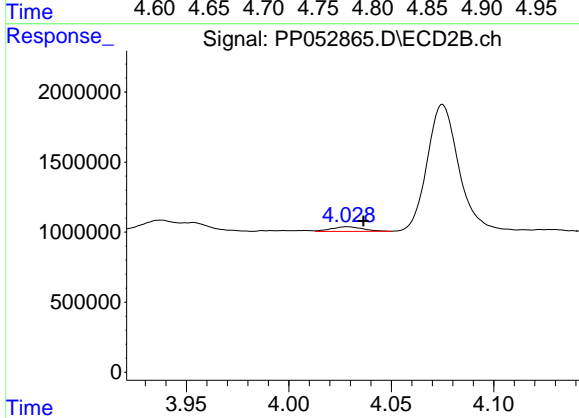
R.T.: 4.028 min
 Delta R.T.: -0.007 min
 Response: 346931
 Conc: 6.39 ng/ml



#11 AR-1232-1

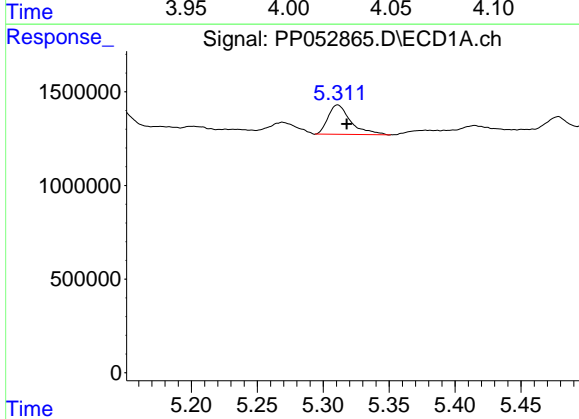
R.T.: 4.794 min
 Delta R.T.: 0.010 min
 Response: 479881
 Conc: 11.06 ng/ml

Instrument :
 ECD_P
 ClientSampleId :



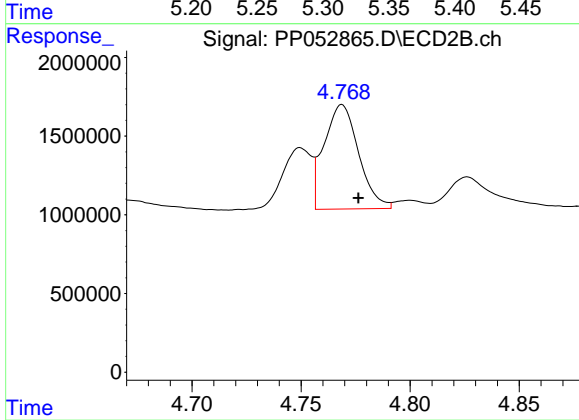
#11 AR-1232-1

R.T.: 4.028 min
 Delta R.T.: -0.008 min
 Response: 346931
 Conc: 8.32 ng/ml



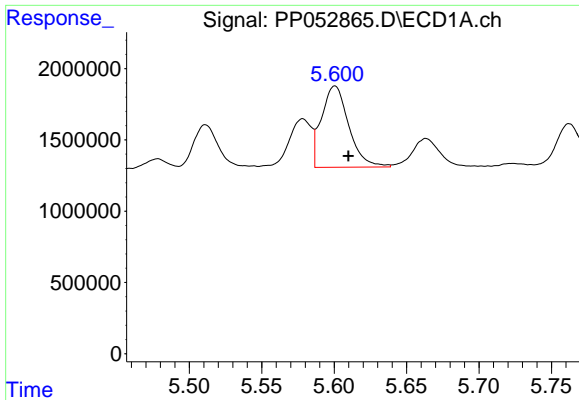
#12 AR-1232-2

R.T.: 5.311 min
 Delta R.T.: -0.007 min
 Response: 1878506
 Conc: 75.71 ng/ml



#12 AR-1232-2

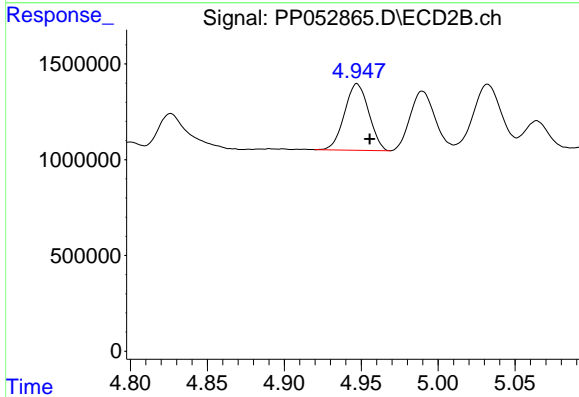
R.T.: 4.769 min
 Delta R.T.: -0.007 min
 Response: 7316225
 Conc: 176.48 ng/ml



#13 AR-1232-3

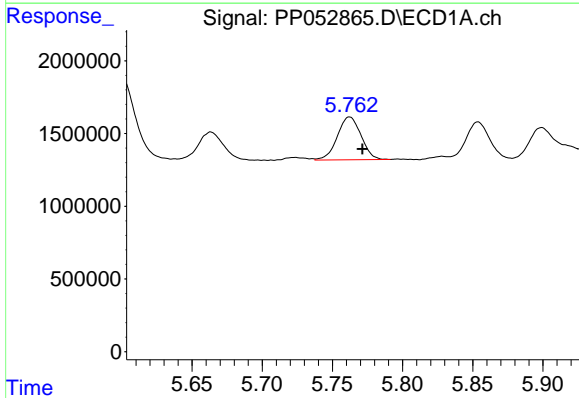
R.T.: 5.601 min
 Delta R.T.: -0.009 min
 Response: 7493620
 Conc: 171.18 ng/ml

Instrument :
 ECD_P
 ClientSampleId :



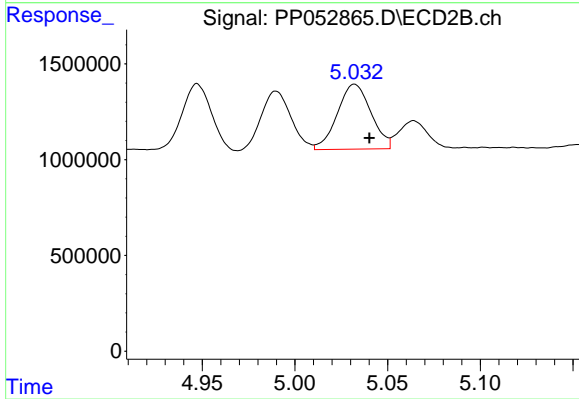
#13 AR-1232-3

R.T.: 4.947 min
 Delta R.T.: -0.008 min
 Response: 3798576
 Conc: 171.88 ng/ml



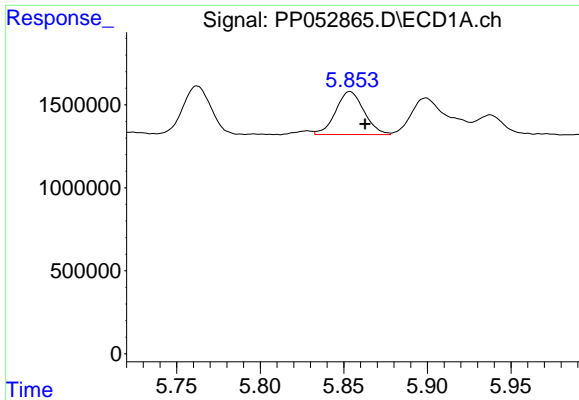
#14 AR-1232-4

R.T.: 5.762 min
 Delta R.T.: -0.009 min
 Response: 3472448
 Conc: 162.68 ng/ml



#14 AR-1232-4

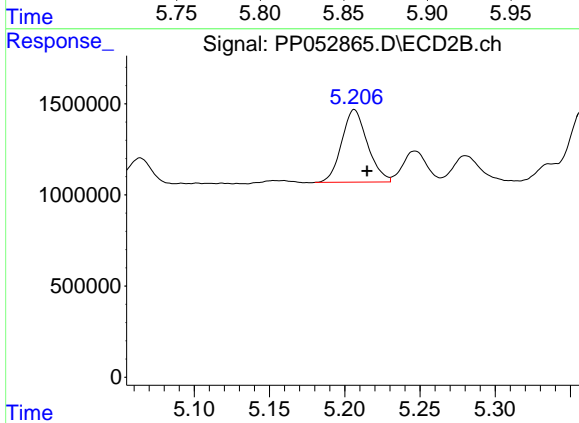
R.T.: 5.032 min
 Delta R.T.: -0.008 min
 Response: 4288581
 Conc: 208.67 ng/ml



#15 AR-1232-5

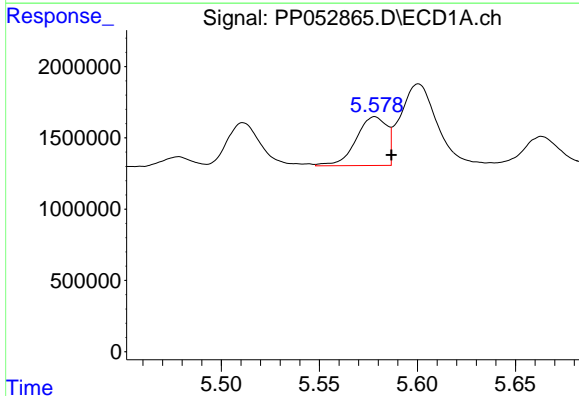
R.T.: 5.854 min
 Delta R.T.: -0.009 min
 Response: 3046516
 Conc: 176.99 ng/ml

Instrument :
 ECD_P
 ClientSampleId :



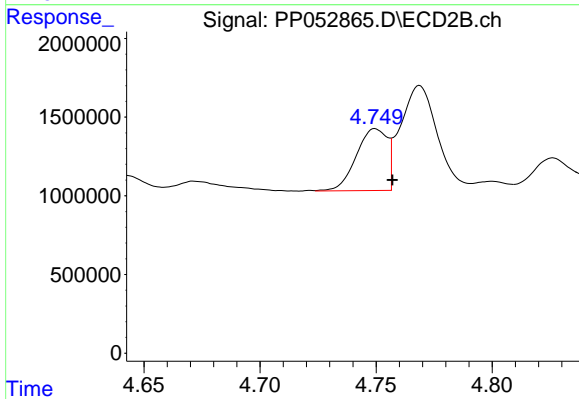
#15 AR-1232-5

R.T.: 5.206 min
 Delta R.T.: -0.008 min
 Response: 4750503
 Conc: 204.62 ng/ml



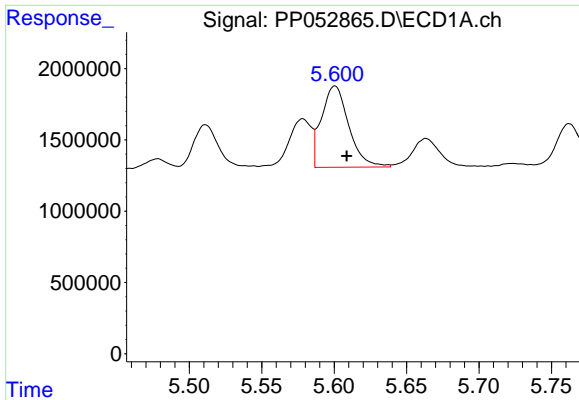
#16 AR-1242-1

R.T.: 5.578 min
 Delta R.T.: -0.008 min
 Response: 3726767
 Conc: 66.22 ng/ml



#16 AR-1242-1

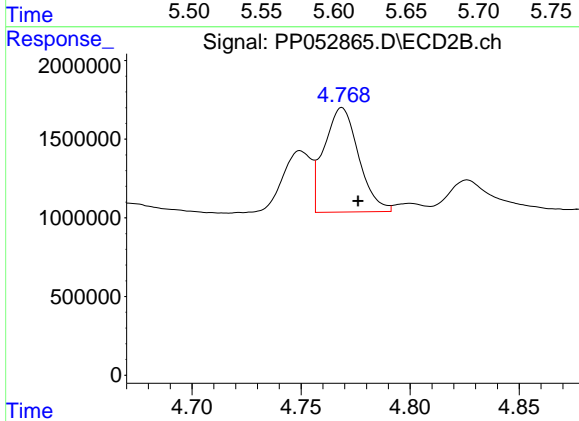
R.T.: 4.750 min
 Delta R.T.: -0.008 min
 Response: 3644561
 Conc: 65.31 ng/ml



#17 AR-1242-2

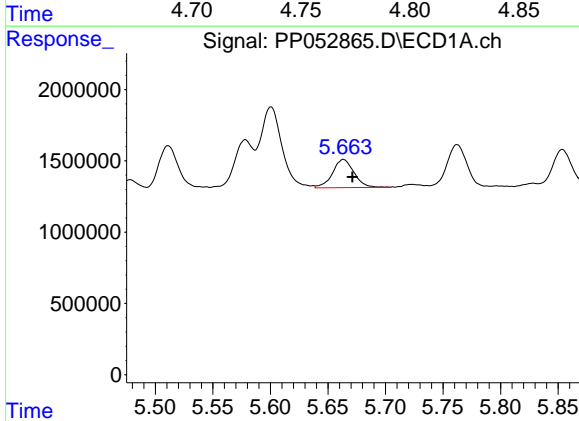
R.T.: 5.601 min
 Delta R.T.: -0.008 min
 Response: 7493620
 Conc: 90.71 ng/ml

Instrument :
 ECD_P
 ClientSampleId :



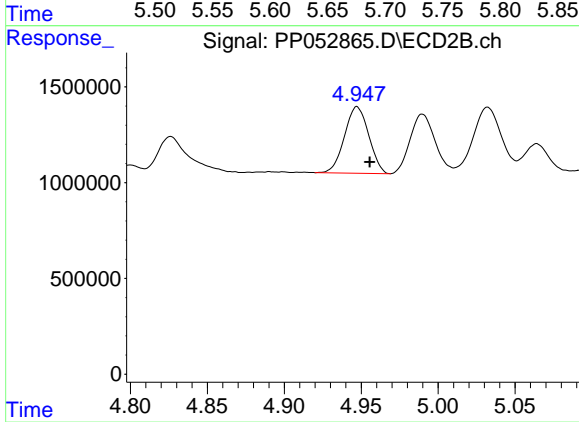
#17 AR-1242-2

R.T.: 4.769 min
 Delta R.T.: -0.007 min
 Response: 7316225
 Conc: 94.86 ng/ml



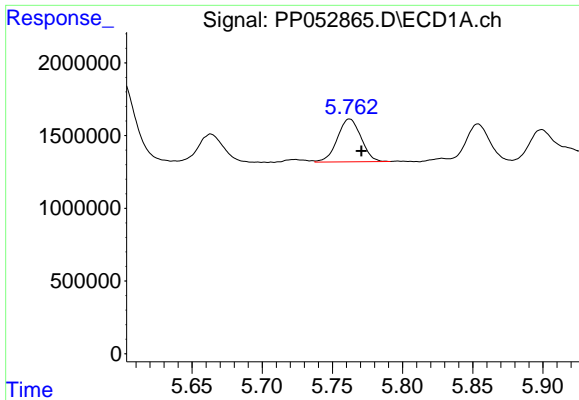
#18 AR-1242-3

R.T.: 5.663 min
 Delta R.T.: -0.008 min
 Response: 2573173
 Conc: 50.60 ng/ml



#18 AR-1242-3

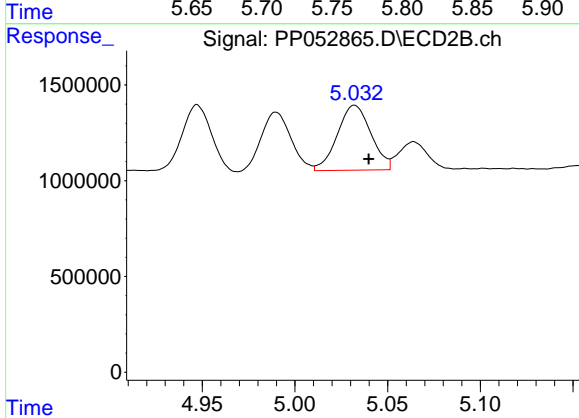
R.T.: 4.947 min
 Delta R.T.: -0.008 min
 Response: 3798576
 Conc: 92.58 ng/ml



#19 AR-1242-4

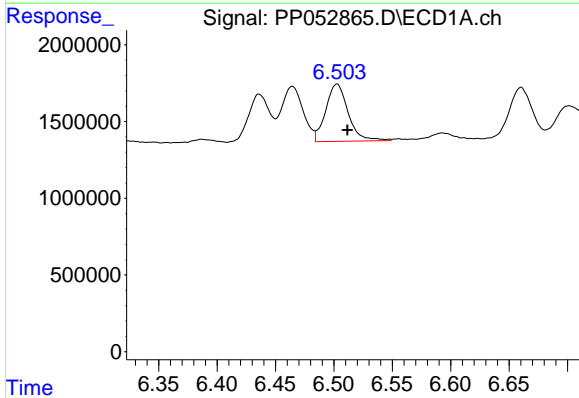
R.T.: 5.762 min
 Delta R.T.: -0.008 min
 Response: 3472448
 Conc: 85.72 ng/ml

Instrument :
 ECD_P
 ClientSampleId :



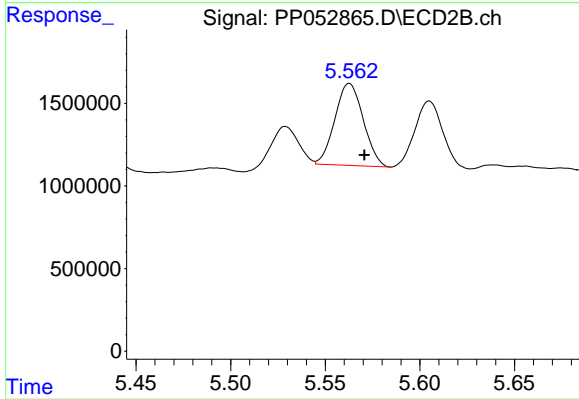
#19 AR-1242-4

R.T.: 5.032 min
 Delta R.T.: -0.008 min
 Response: 4288581
 Conc: 101.11 ng/ml



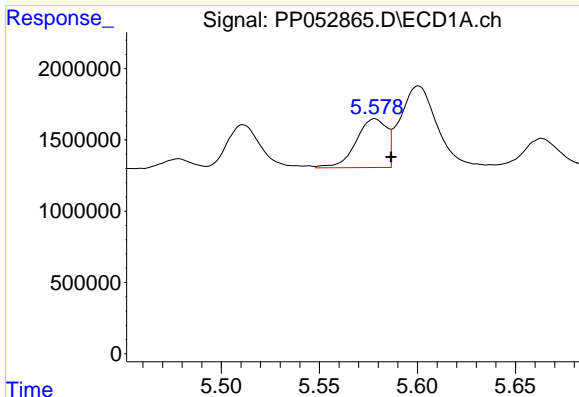
#20 AR-1242-5

R.T.: 6.503 min
 Delta R.T.: -0.009 min
 Response: 4990547
 Conc: 125.18 ng/ml



#20 AR-1242-5

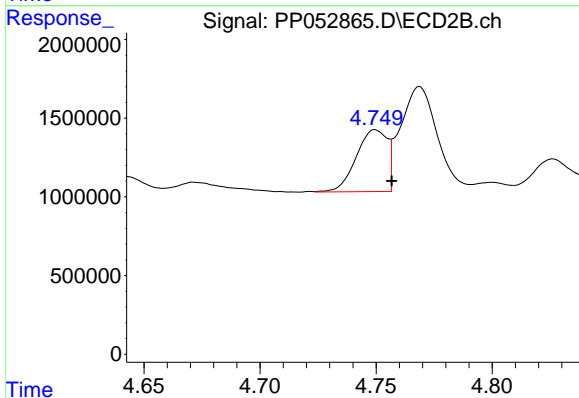
R.T.: 5.563 min
 Delta R.T.: -0.008 min
 Response: 5179990
 Conc: 102.48 ng/ml



#21 AR-1248-1

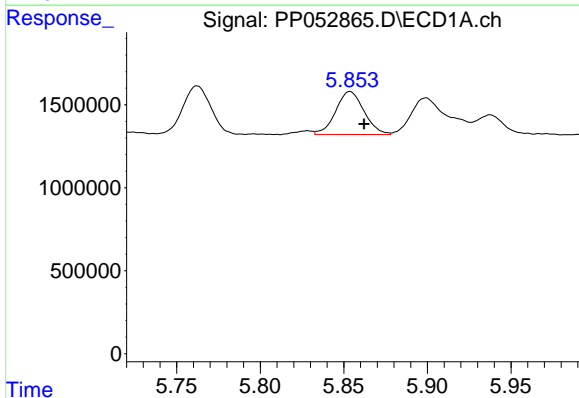
R.T.: 5.578 min
 Delta R.T.: -0.008 min
 Response: 3726767
 Conc: 91.75 ng/ml

Instrument :
 ECD_P
 ClientSampleId :



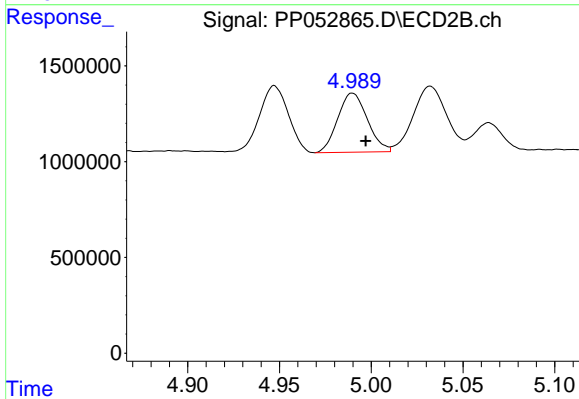
#21 AR-1248-1

R.T.: 4.750 min
 Delta R.T.: -0.007 min
 Response: 3644561
 Conc: 91.06 ng/ml



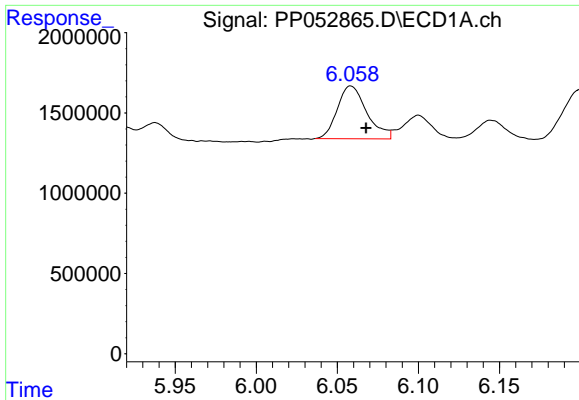
#22 AR-1248-2

R.T.: 5.854 min
 Delta R.T.: -0.009 min
 Response: 3046516
 Conc: 51.19 ng/ml



#22 AR-1248-2

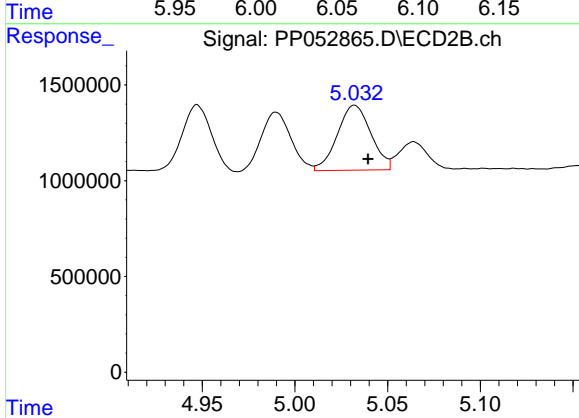
R.T.: 4.990 min
 Delta R.T.: -0.007 min
 Response: 3472056
 Conc: 61.32 ng/ml



#23 AR-1248-3

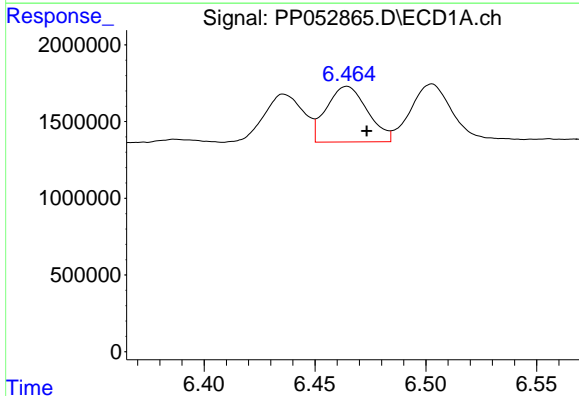
R.T.: 6.058 min
 Delta R.T.: -0.009 min
 Response: 4168714
 Conc: 64.21 ng/ml

Instrument :
 ECD_P
 ClientSampleId :



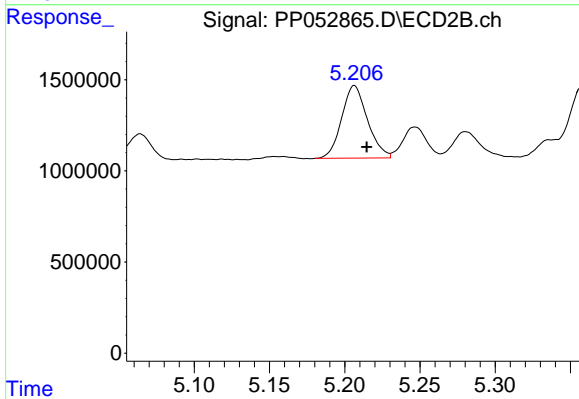
#23 AR-1248-3

R.T.: 5.032 min
 Delta R.T.: -0.007 min
 Response: 4288581
 Conc: 73.04 ng/ml



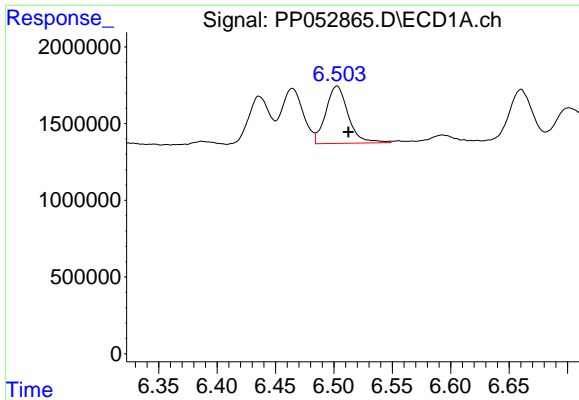
#24 AR-1248-4

R.T.: 6.464 min
 Delta R.T.: -0.009 min
 Response: 4671613
 Conc: 72.54 ng/ml



#24 AR-1248-4

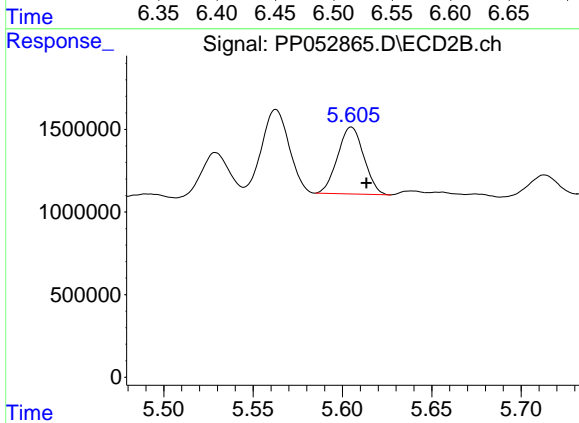
R.T.: 5.206 min
 Delta R.T.: -0.008 min
 Response: 4750503
 Conc: 68.22 ng/ml



#25 AR-1248-5

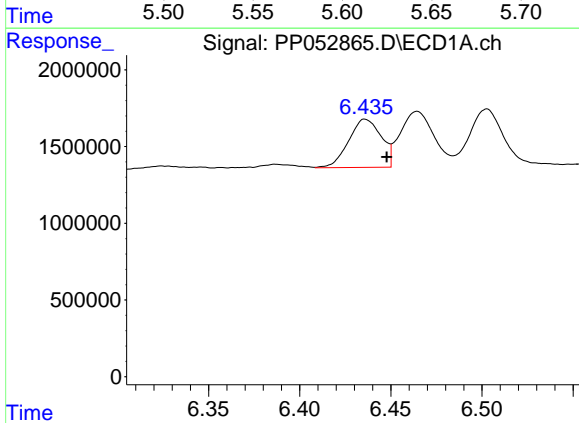
R.T.: 6.503 min
 Delta R.T.: -0.010 min
 Response: 4990547
 Conc: 78.78 ng/ml

Instrument :
 ECD_P
 ClientSampleId :



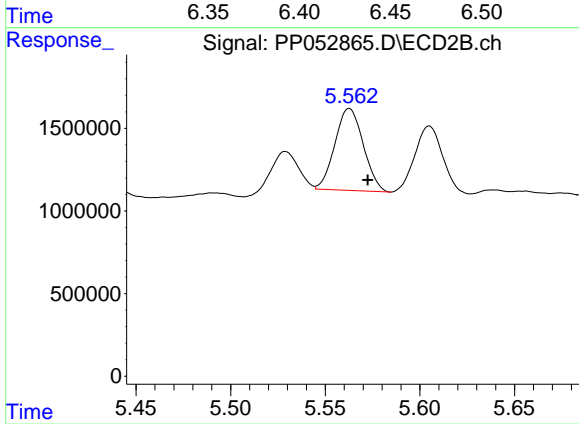
#25 AR-1248-5

R.T.: 5.605 min
 Delta R.T.: -0.008 min
 Response: 4128993
 Conc: 65.08 ng/ml



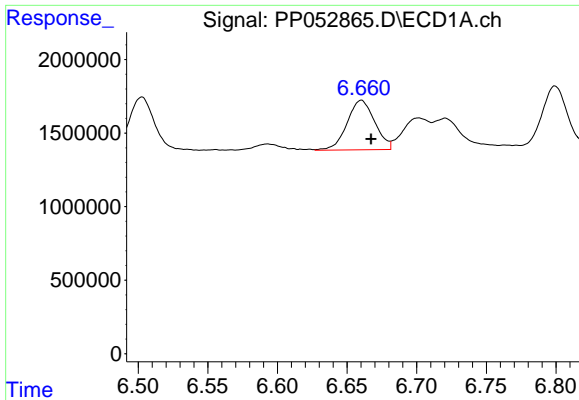
#26 AR-1254-1

R.T.: 6.436 min
 Delta R.T.: -0.012 min
 Response: 3908939
 Conc: 51.50 ng/ml



#26 AR-1254-1

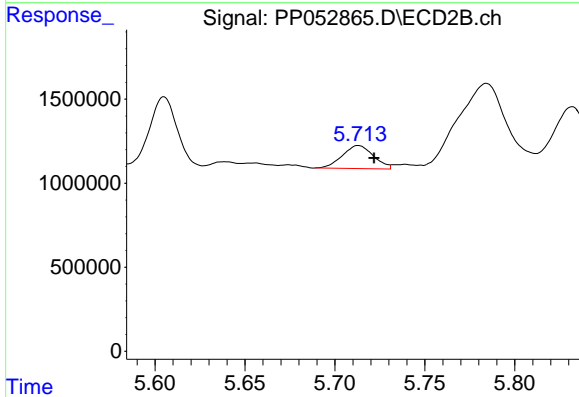
R.T.: 5.563 min
 Delta R.T.: -0.010 min
 Response: 5179990
 Conc: 48.24 ng/ml



#27 AR-1254-2

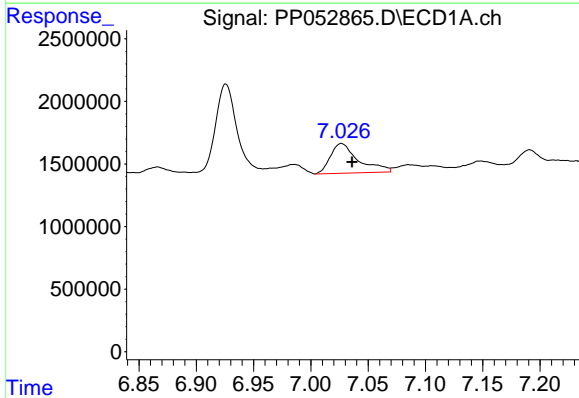
R.T.: 6.660 min
 Delta R.T.: -0.007 min
 Response: 4650680
 Conc: 41.61 ng/ml

Instrument :
 ECD_P
 ClientSampleId :



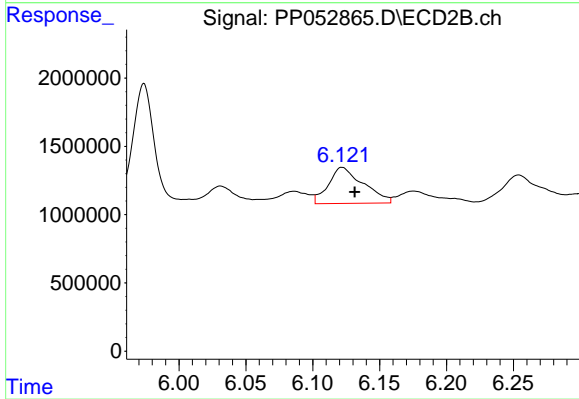
#27 AR-1254-2

R.T.: 5.713 min
 Delta R.T.: -0.009 min
 Response: 1651710
 Conc: 17.28 ng/ml



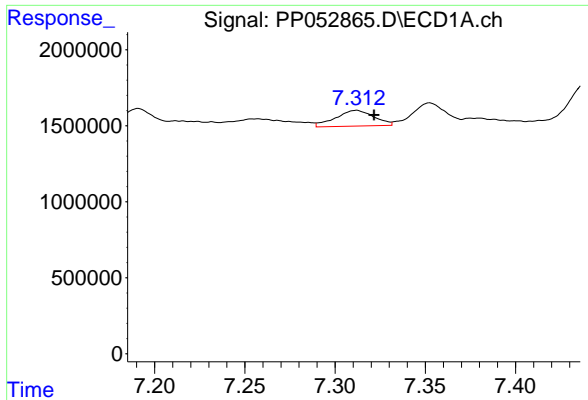
#28 AR-1254-3

R.T.: 7.027 min
 Delta R.T.: -0.009 min
 Response: 4026150
 Conc: 36.17 ng/ml



#28 AR-1254-3

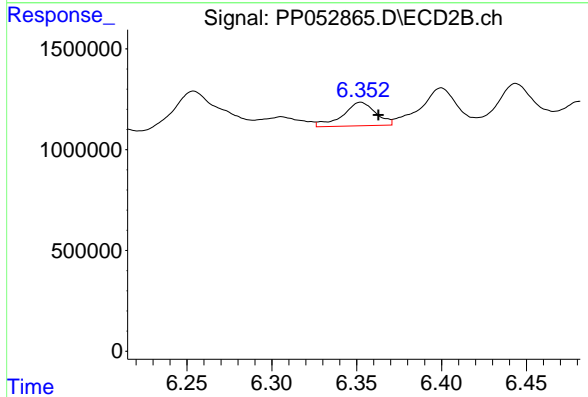
R.T.: 6.122 min
 Delta R.T.: -0.009 min
 Response: 4793731
 Conc: 31.38 ng/ml



#29 AR-1254-4

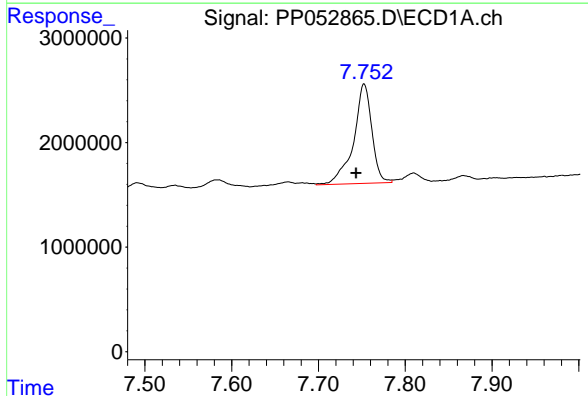
R.T.: 7.312 min
Delta R.T.: -0.010 min
Response: 1527456
Conc: 21.69 ng/ml

Instrument :
ECD_P
ClientSampleId :



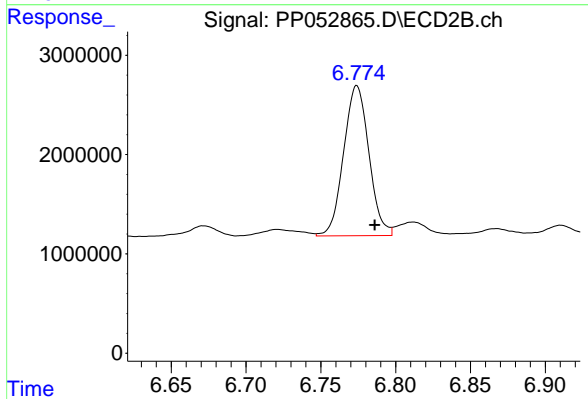
#29 AR-1254-4

R.T.: 6.352 min
Delta R.T.: -0.010 min
Response: 1585398
Conc: 17.46 ng/ml



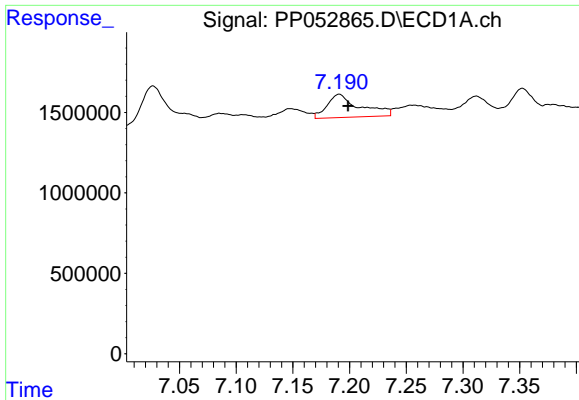
#30 AR-1254-5

R.T.: 7.753 min
Delta R.T.: 0.009 min
Response: 13921887
Conc: 176.82 ng/ml



#30 AR-1254-5

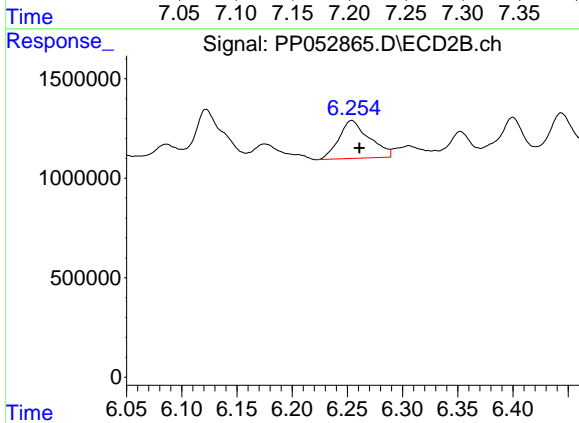
R.T.: 6.774 min
Delta R.T.: -0.012 min
Response: 17796937
Conc: 127.92 ng/ml



#31 AR-1260-1

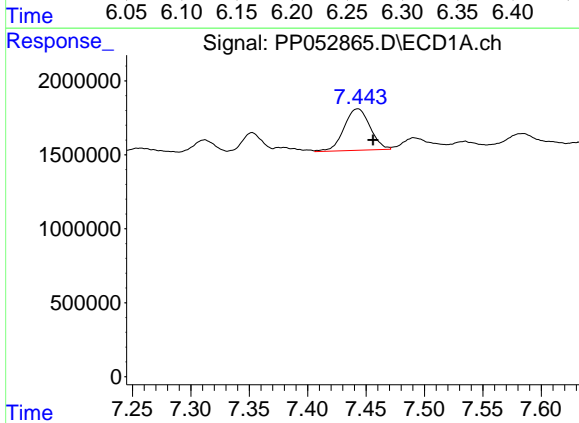
R.T.: 7.191 min
 Delta R.T.: -0.008 min
 Response: 2913944
 Conc: 34.11 ng/ml

Instrument :
 ECD_P
 ClientSampleId :



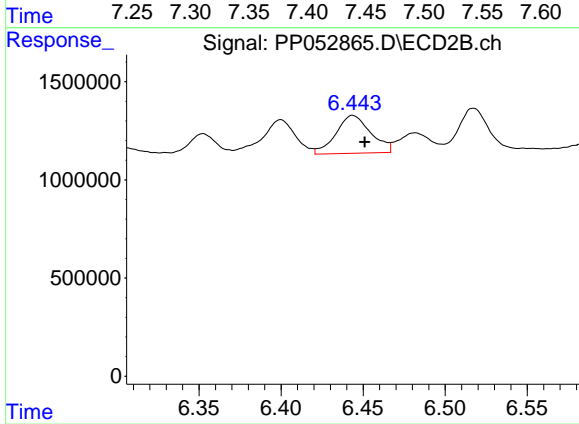
#31 AR-1260-1

R.T.: 6.254 min
 Delta R.T.: -0.007 min
 Response: 3646007
 Conc: 35.85 ng/ml



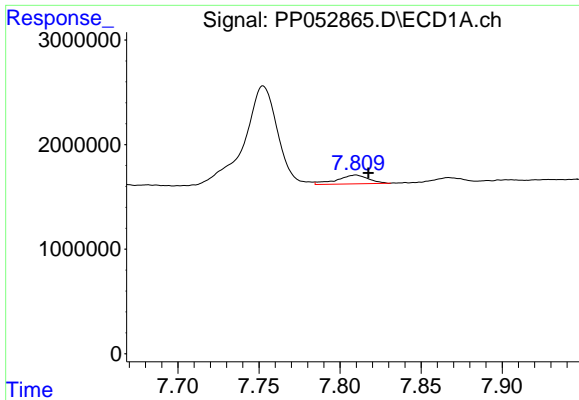
#32 AR-1260-2

R.T.: 7.443 min
 Delta R.T.: -0.013 min
 Response: 4330150
 Conc: 46.37 ng/ml



#32 AR-1260-2

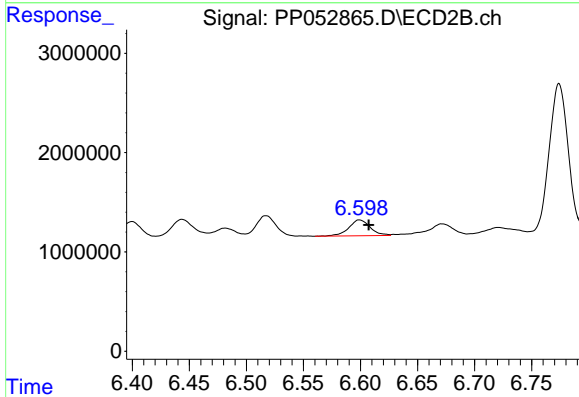
R.T.: 6.444 min
 Delta R.T.: -0.007 min
 Response: 2849733
 Conc: 23.43 ng/ml



#33 AR-1260-3

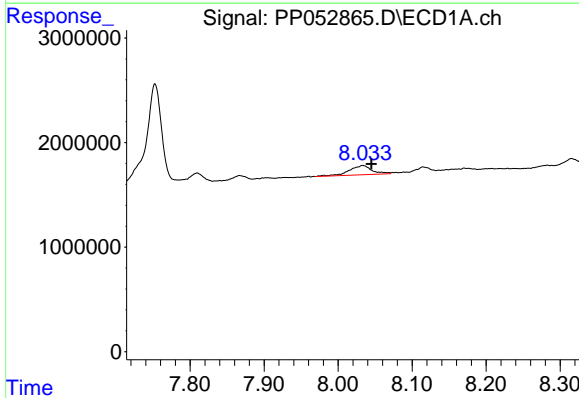
R.T.: 7.810 min
 Delta R.T.: -0.008 min
 Response: 1142622
 Conc: 18.08 ng/ml

Instrument :
 ECD_P
 ClientSampleId :



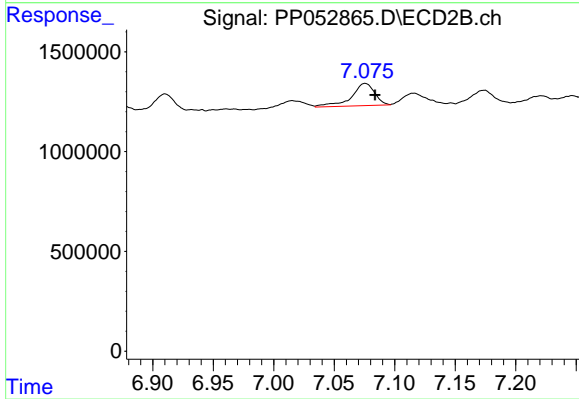
#33 AR-1260-3

R.T.: 6.599 min
 Delta R.T.: -0.008 min
 Response: 2105942
 Conc: 18.05 ng/ml



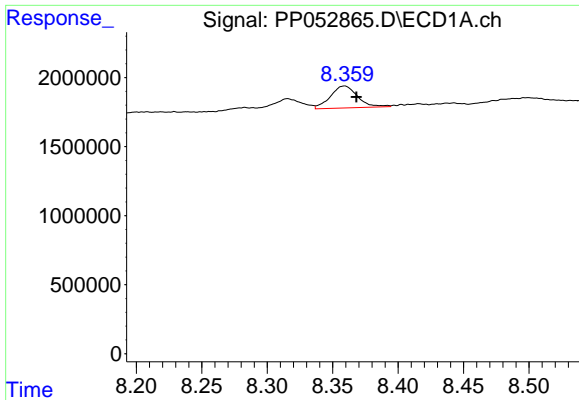
#34 AR-1260-4

R.T.: 8.033 min
 Delta R.T.: -0.012 min
 Response: 1889154
 Conc: 26.38 ng/ml



#34 AR-1260-4

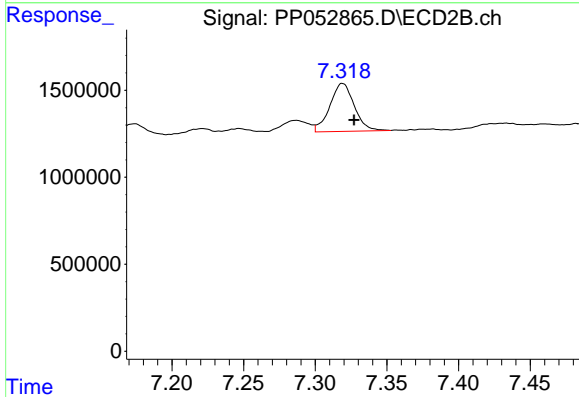
R.T.: 7.076 min
 Delta R.T.: -0.008 min
 Response: 1504020
 Conc: 16.70 ng/ml



#35 AR-1260-5

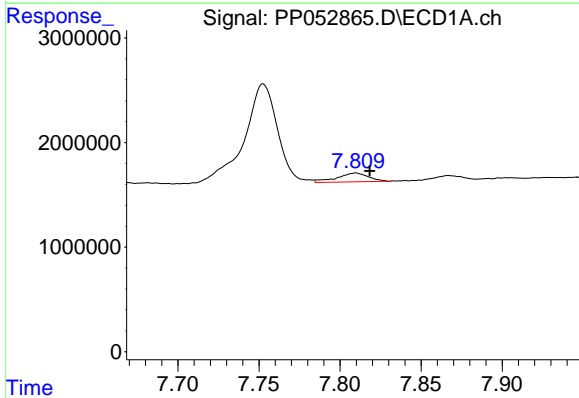
R.T.: 8.359 min
 Delta R.T.: -0.009 min
 Response: 2286231
 Conc: 17.99 ng/ml

Instrument :
 ECD_P
 ClientSampleId :



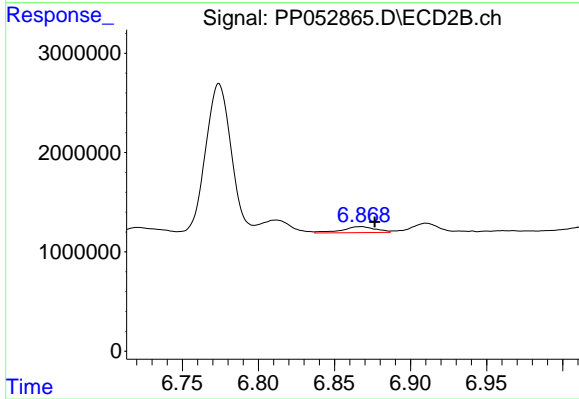
#35 AR-1260-5

R.T.: 7.319 min
 Delta R.T.: -0.008 min
 Response: 3255250
 Conc: 15.89 ng/ml



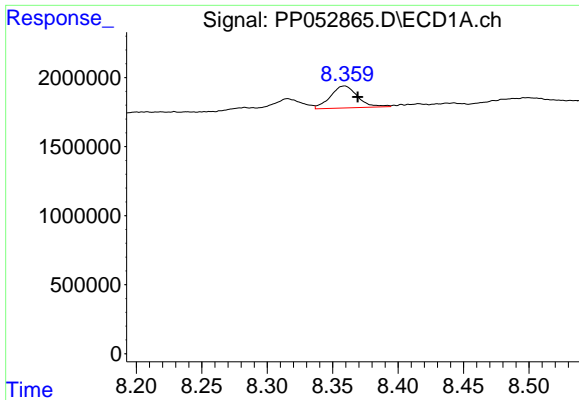
#36 AR-1262-1

R.T.: 7.810 min
 Delta R.T.: -0.009 min
 Response: 1142622
 Conc: 11.92 ng/ml



#36 AR-1262-1

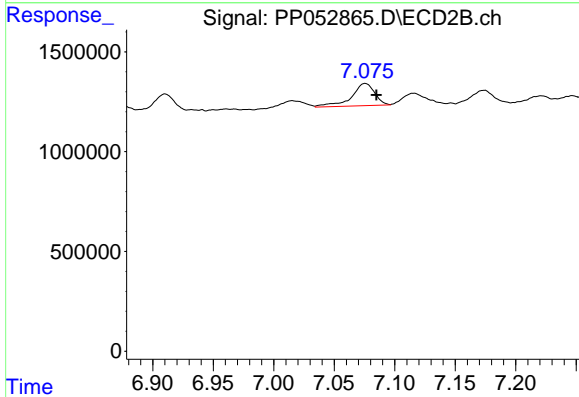
R.T.: 6.867 min
 Delta R.T.: -0.009 min
 Response: 921577
 Conc: 16.09 ng/ml



#37 AR-1262-2

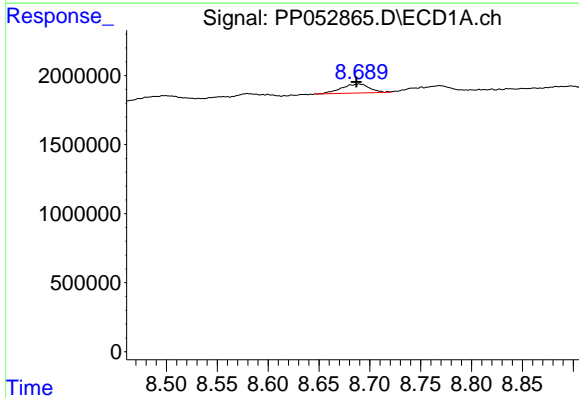
R.T.: 8.359 min
 Delta R.T.: -0.010 min
 Response: 2286231
 Conc: 15.37 ng/ml

Instrument :
 ECD_P
 ClientSampleId :



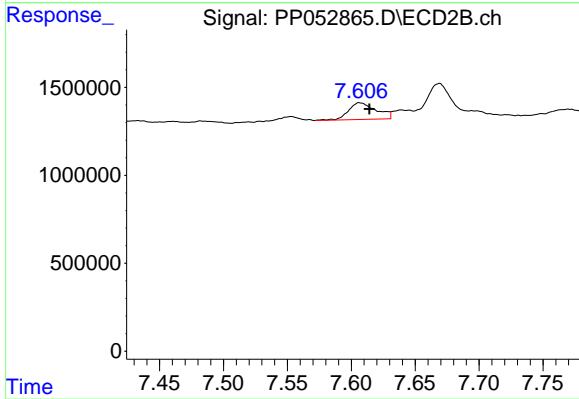
#37 AR-1262-2

R.T.: 7.076 min
 Delta R.T.: -0.009 min
 Response: 1504020
 Conc: 12.15 ng/ml



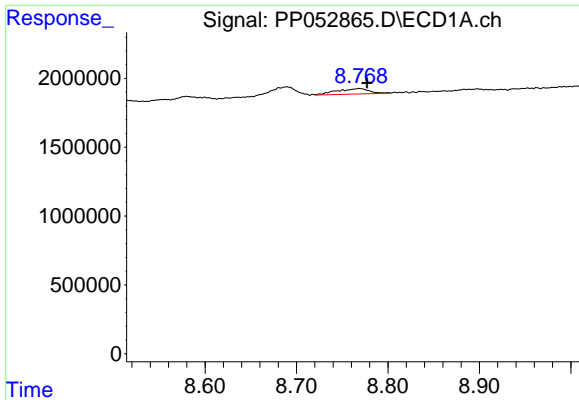
#38 AR-1262-3

R.T.: 8.689 min
 Delta R.T.: 0.003 min
 Response: 1239684
 Conc: 12.49 ng/ml



#38 AR-1262-3

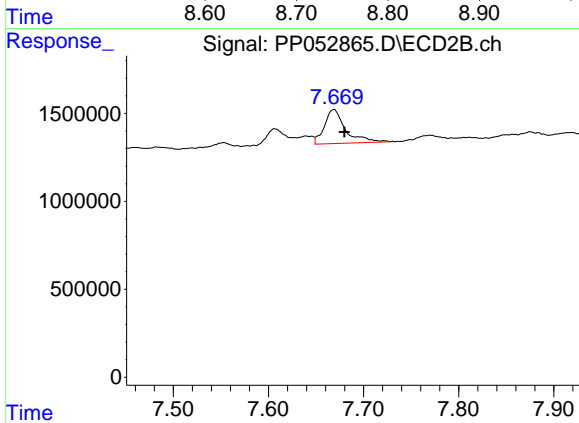
R.T.: 7.607 min
 Delta R.T.: -0.007 min
 Response: 1432993
 Conc: 14.20 ng/ml



#39 AR-1262-4

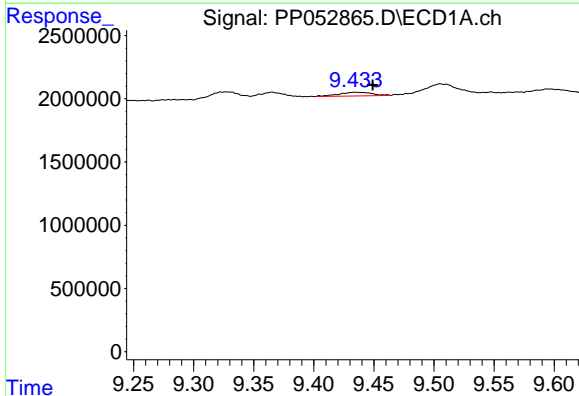
R.T.: 8.769 min
 Delta R.T.: -0.009 min
 Response: 969903
 Conc: 20.82 ng/ml

Instrument :
 ECD_P
 ClientSampleId :



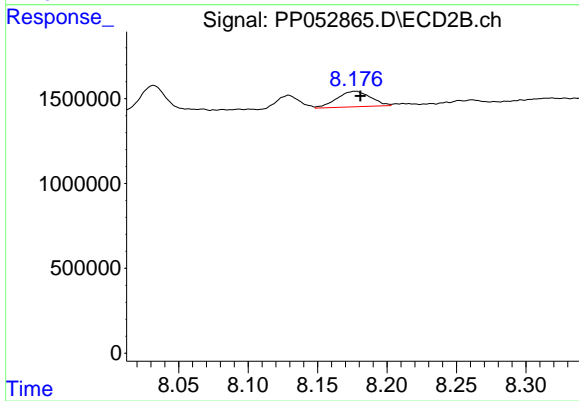
#39 AR-1262-4

R.T.: 7.669 min
 Delta R.T.: -0.011 min
 Response: 3002351
 Conc: 16.78 ng/ml



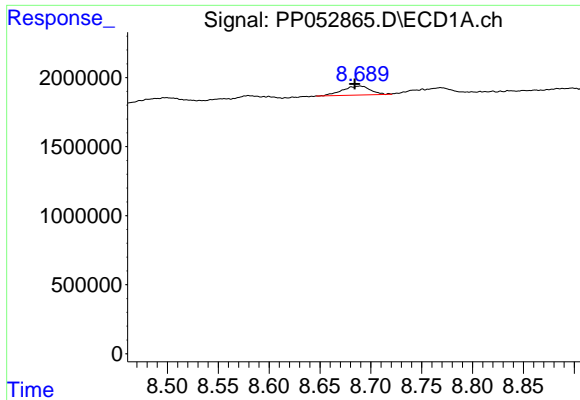
#40 AR-1262-5

R.T.: 9.434 min
 Delta R.T.: -0.015 min
 Response: 559977
 Conc: 12.24 ng/ml



#40 AR-1262-5

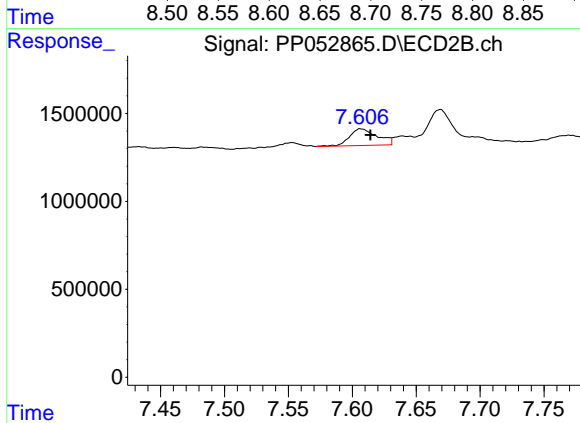
R.T.: 8.177 min
 Delta R.T.: -0.004 min
 Response: 1558878
 Conc: 20.82 ng/ml



#41 AR-1268-1

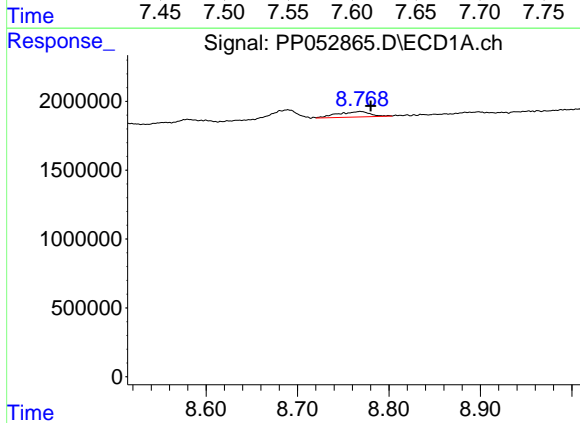
R.T.: 8.689 min
 Delta R.T.: 0.005 min
 Response: 1239684
 Conc: 6.59 ng/ml

Instrument :
 ECD_P
 ClientSampleId :



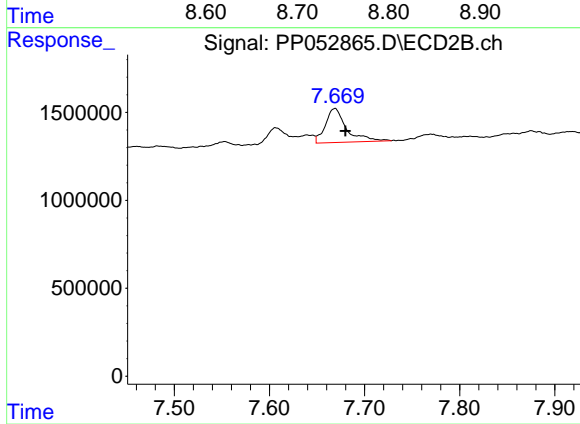
#41 AR-1268-1

R.T.: 7.607 min
 Delta R.T.: -0.007 min
 Response: 1432993
 Conc: 4.67 ng/ml



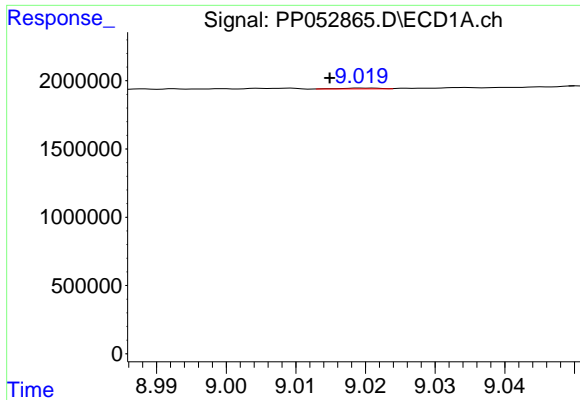
#42 AR-1268-2

R.T.: 8.769 min
 Delta R.T.: -0.012 min
 Response: 969903
 Conc: 5.93 ng/ml



#42 AR-1268-2

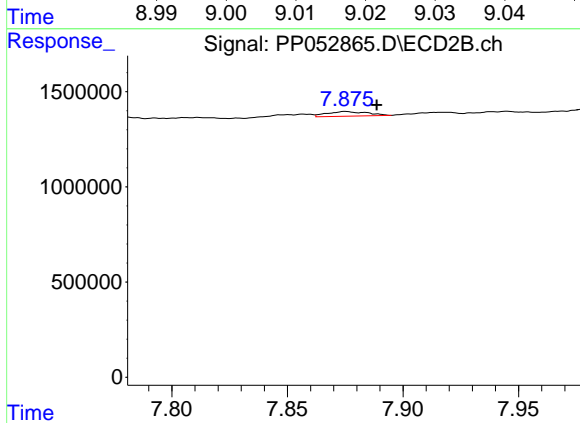
R.T.: 7.669 min
 Delta R.T.: -0.011 min
 Response: 3002351
 Conc: 11.07 ng/ml



#43 AR-1268-3

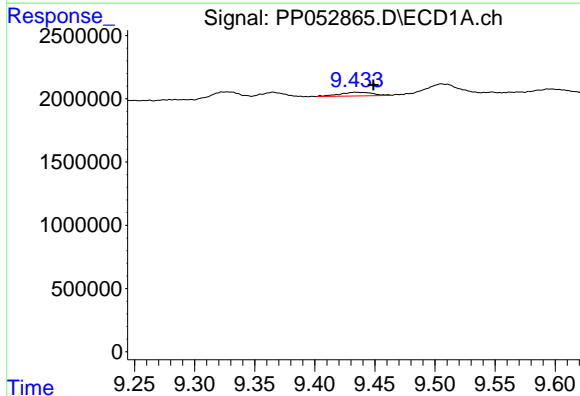
R.T.: 9.020 min
 Delta R.T.: 0.005 min
 Response: 22934
 Conc: 0.15 ng/ml

Instrument :
 ECD_P
 ClientSampleId :



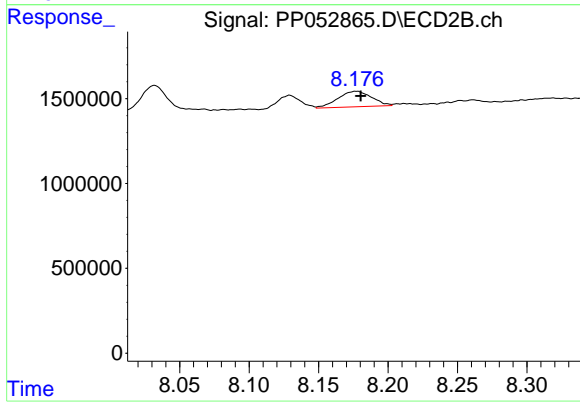
#43 AR-1268-3

R.T.: 7.875 min
 Delta R.T.: -0.013 min
 Response: 297481
 Conc: 1.27 ng/ml



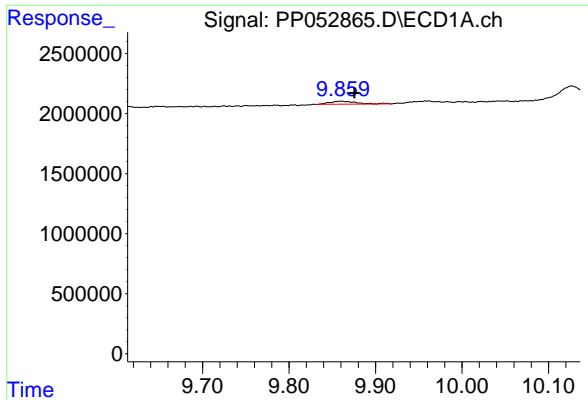
#44 AR-1268-4

R.T.: 9.434 min
 Delta R.T.: -0.015 min
 Response: 559977
 Conc: 11.01 ng/ml



#44 AR-1268-4

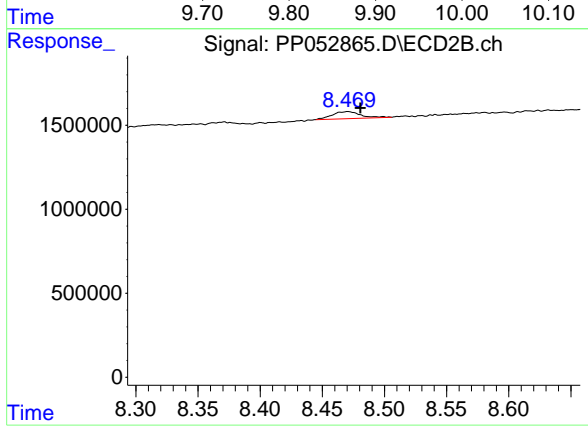
R.T.: 8.177 min
 Delta R.T.: -0.003 min
 Response: 1558878
 Conc: 18.35 ng/ml



#45 AR-1268-5

R.T.: 9.860 min
Delta R.T.: -0.016 min
Response: 547807
Conc: 1.28 ng/ml

Instrument :
ECD_P
ClientSampleId :



#45 AR-1268-5

R.T.: 8.470 min
Delta R.T.: -0.010 min
Response: 658248
Conc: 1.00 ng/ml