

Data Path : Z:\pestpcbsrv\HPCHEM1\ECD\_P\Data\PP102822\  
 Data File : PP052867.D  
 Signal(s) : Signal #1: ECD1A.ch Signal #2: ECD2B.ch  
 Acq On : 29 Oct 2022 06:13  
 Operator : YP\AJ  
 Sample : N5316-08  
 Misc :  
 ALS Vial : 44 Sample Multiplier: 1

Instrument :  
 ECD\_P  
 ClientSampleId :

Integration File signal 1: autoint1.e  
 Integration File signal 2: autoint2.e  
 Quant Time: Oct 29 09:43:27 2022  
 Quant Method : Z:\pestpcbsrv\HPCHEM1\ECD\_P\methods\PP102622.M  
 Quant Title : GC EXTRACTABLES  
 QLast Update : Thu Oct 27 04:46:37 2022  
 Response via : Initial Calibration  
 Integrator: ChemStation

Volume Inj. : 2 µl  
 Signal #1 Phase : ZB-MR1 Signal #2 Phase: ZB-MR2  
 Signal #1 Info : 30Mx0.32mmx 0.50µ Signal #2 Info : 30M x 0.32mm x 0.25µm

Compound	RT#1	RT#2	Resp#1	Resp#2	ng/ml	ng/ml
-----						
System Monitoring Compounds						
1) SA Tetrachlo...	4.405	3.650	36649523	34855764	16.586	18.548
2) SA Decachlor...	10.209	8.732	20739624	26606678	16.339	15.865
Target Compounds						
3) L1 AR-1016-1	5.580	4.751	945799	751343	14.107	11.414
4) L1 AR-1016-2	5.601	4.769	1509877	937826	15.116	10.216 #
5) L1 AR-1016-3	5.664	4.948	682056	612995	11.207	12.608
6) L1 AR-1016-4	5.763	4.991	416726	668546	8.605	17.160 #
7) L1 AR-1016-5	6.058	5.205	495445	587968	10.286	11.702
8) L2 AR-1221-1	4.613	0.000	4916282	0	191.731	N.D. #
9) L2 AR-1221-2	4.711	3.938f	538315	3779773	28.298	215.918 #
10) L2 AR-1221-3	4.794	4.027	414424	1480856	7.270	27.282 #
11) L3 AR-1232-1	4.794	4.027	414424	1480856	9.551	35.516 #
12) L3 AR-1232-2	5.319	4.769	1189852	937826	47.957	22.622 #
13) L3 AR-1232-3	5.601	4.948	1509877	612995	34.491	27.737
14) L3 AR-1232-4	5.763	5.031	416726	699231	19.523	34.022 #
15) L3 AR-1232-5	5.854	5.205	357007	587968	20.741	25.325
16) L4 AR-1242-1	5.580	4.751	945799	751343	16.805	13.463
17) L4 AR-1242-2	5.601	4.769	1509877	937826	18.278	12.159 #
18) L4 AR-1242-3	5.664	4.948	682056	612995	13.411	14.941
19) L4 AR-1242-4	5.763	5.031	416726	699231	10.287	16.486 #
20) L4 AR-1242-5	6.504	5.563	666988	969848	16.730	19.186
21) L5 AR-1248-1	5.580	4.751	945799	751343	23.286	18.772
22) L5 AR-1248-2	5.854	4.991	357007	668546	5.998	11.807 #
23) L5 AR-1248-3	6.058	5.031	495445	699231	7.632	11.909 #
24) L5 AR-1248-4	6.468	5.205	688200	587968	10.686	8.444
25) L5 AR-1248-5	6.504	5.604	666988	441307	10.529	6.956 #
26) L6 AR-1254-1	6.437	5.563	933915	969848	12.304	9.032 #
27) L6 AR-1254-2	6.659	5.714	1225442	694528	10.964	7.266 #
28) L6 AR-1254-3	7.027	6.123	1470061	2484228	13.207	16.260
29) L6 AR-1254-4	7.313	6.353	766137	698830	10.879	7.697 #
30) L6 AR-1254-5	7.752	6.774	7348166	9373202	93.330	67.370 #
31) L7 AR-1260-1	7.192	6.254	1930322	2103337	22.597	20.679
32) L7 AR-1260-2	7.444	6.445	2132359	2026969	22.835	16.667 #
33) L7 AR-1260-3	7.809	6.599	614296	1237141	9.722	10.606
34) L7 AR-1260-4	8.034	7.074	1460094	956754	20.392	10.626 #
35) L7 AR-1260-5	8.359	7.319	1407309	1971214	11.072	9.623
36) L8 AR-1262-1	7.809	6.868	614296	441689	6.409	7.712
37) L8 AR-1262-2	8.359	7.074	1407309	956754	9.461	7.726
38) L8 AR-1262-3	8.689	7.607	803247	783955	8.095	7.768
39) L8 AR-1262-4	8.773	7.668	703601	1515023	15.102	8.467 #
40) L8 AR-1262-5	9.436	8.176	323588	864248	7.071	11.540 #
41) L9 AR-1268-1	8.689	7.607	803247	783955	4.271	2.557 #

Data Path : Z:\pestpcbsrv\HPCHEM1\ECD\_P\Data\PP102822\  
 Data File : PP052867.D  
 Signal(s) : Signal #1: ECD1A.ch Signal #2: ECD2B.ch  
 Acq On : 29 Oct 2022 06:13  
 Operator : YP\AJ  
 Sample : N5316-08  
 Misc :  
 ALS Vial : 44 Sample Multiplier: 1

Instrument :  
 ECD\_P  
 ClientSampleId :

Integration File signal 1: autoint1.e  
 Integration File signal 2: autoint2.e  
 Quant Time: Oct 29 09:43:27 2022  
 Quant Method : Z:\pestpcbsrv\HPCHEM1\ECD\_P\methods\PP102622.M  
 Quant Title : GC EXTRACTABLES  
 QLast Update : Thu Oct 27 04:46:37 2022  
 Response via : Initial Calibration  
 Integrator: ChemStation

Volume Inj. : 2 µl  
 Signal #1 Phase : ZB-MR1 Signal #2 Phase: ZB-MR2  
 Signal #1 Info : 30Mx0.32mmx 0.50µ Signal #2 Info : 30M x 0.32mm x 0.25µm

	Compound	RT#1	RT#2	Resp#1	Resp#2	ng/ml	ng/ml
42)	L9 AR-1268-2	8.773	7.668	703601	1515023	4.299	5.586 #
43)	L9 AR-1268-3	9.007	7.876	151162	169322	0.998	0.722 #
44)	L9 AR-1268-4	9.436	8.176	323588	864248	6.363	10.174 #
45)	L9 AR-1268-5	9.858f	8.468	269273	418742	0.627	0.639

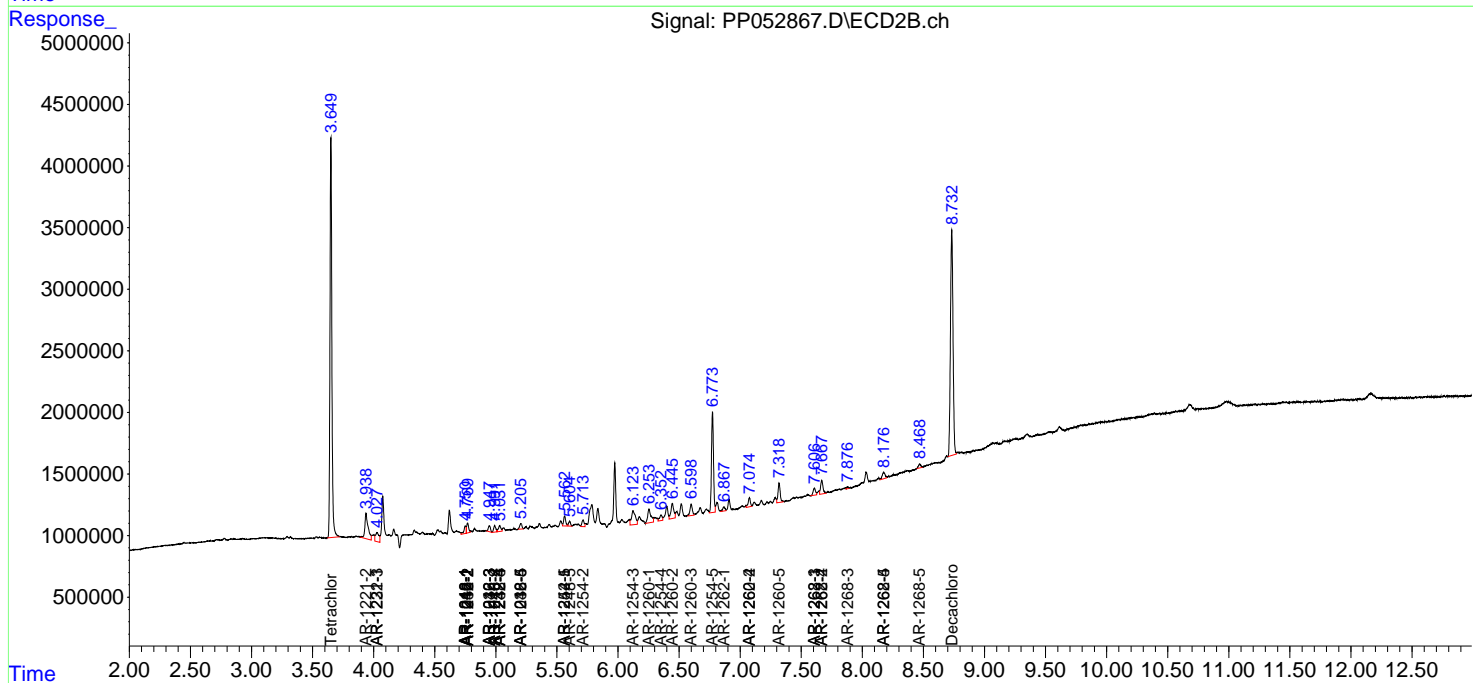
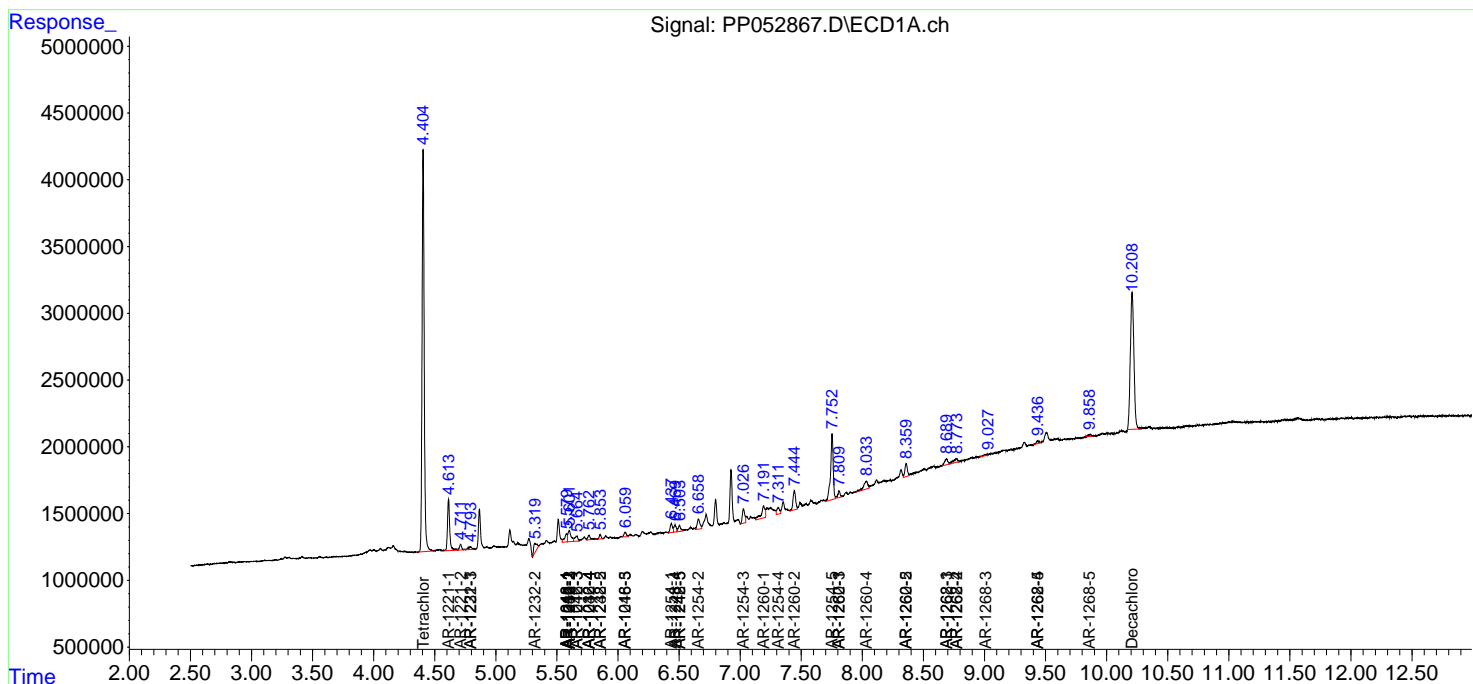
(f)=RT Delta > 1/2 Window (#)=Amounts differ by > 25% (m)=manual int.

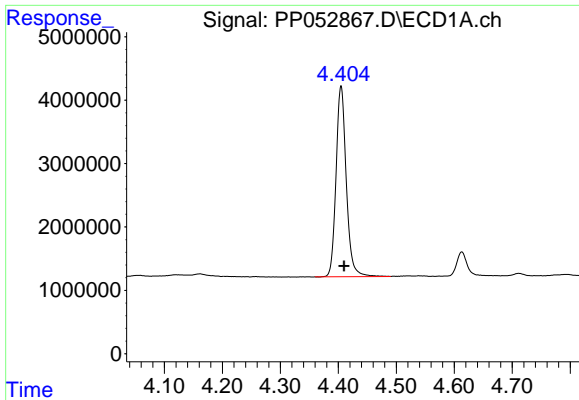
Data Path : Z:\pestpcbsrv\HPCHEM1\ECD\_P\Data\PP102822\  
 Data File : PP052867.D  
 Signal(s) : Signal #1: ECD1A.ch Signal #2: ECD2B.ch  
 Acq On : 29 Oct 2022 06:13  
 Operator : YP\AJ  
 Sample : N5316-08  
 Misc :  
 ALS Vial : 44 Sample Multiplier: 1

Instrument :  
 ECD\_P  
 ClientSampleId :

Integration File signal 1: autoint1.e  
 Integration File signal 2: autoint2.e  
 Quant Time: Oct 29 09:43:27 2022  
 Quant Method : Z:\pestpcbsrv\HPCHEM1\ECD\_P\methods\PP102622.M  
 Quant Title : GC EXTRACTABLES  
 QLast Update : Thu Oct 27 04:46:37 2022  
 Response via : Initial Calibration  
 Integrator: ChemStation

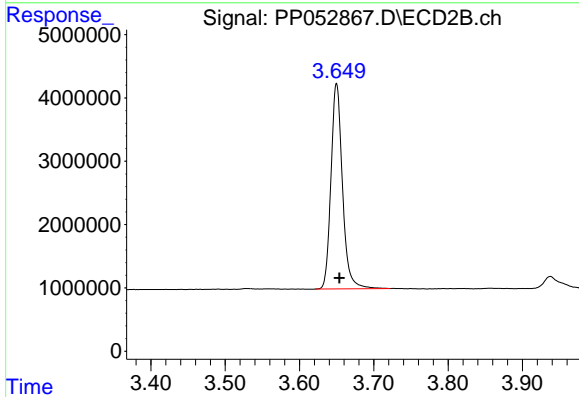
Volume Inj. : 2 µl  
 Signal #1 Phase : ZB-MR1 Signal #2 Phase: ZB-MR2  
 Signal #1 Info : 30Mx0.32mmx 0.50µ Signal #2 Info : 30M x 0.32mm x 0.25µm



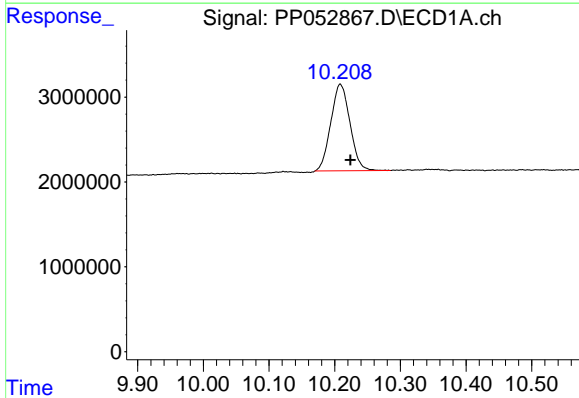


#1 Tetrachloro-m-xylene  
 R.T.: 4.405 min  
 Delta R.T.: -0.005 min  
 Response: 36649523  
 Conc: 16.59 ng/ml

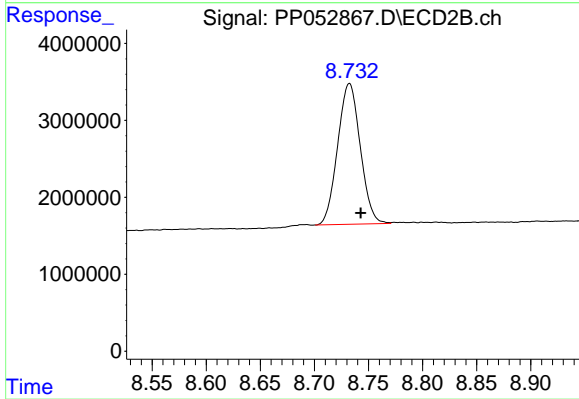
Instrument :  
 ECD\_P  
 ClientSampleId :



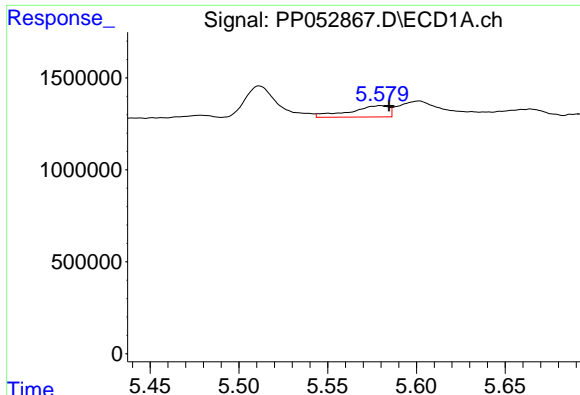
#1 Tetrachloro-m-xylene  
 R.T.: 3.650 min  
 Delta R.T.: -0.004 min  
 Response: 34855764  
 Conc: 18.55 ng/ml



#2 Decachlorobiphenyl  
 R.T.: 10.209 min  
 Delta R.T.: -0.015 min  
 Response: 20739624  
 Conc: 16.34 ng/ml



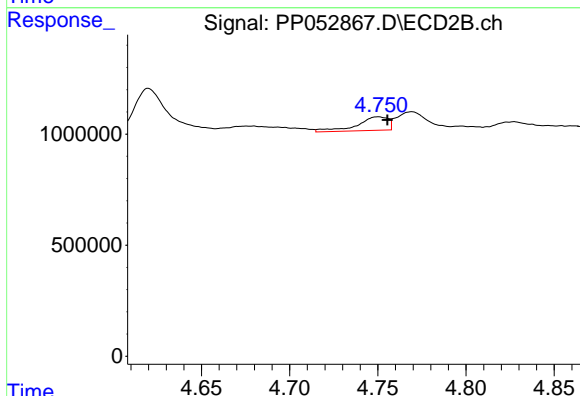
#2 Decachlorobiphenyl  
 R.T.: 8.732 min  
 Delta R.T.: -0.010 min  
 Response: 26606678  
 Conc: 15.86 ng/ml



#3 AR-1016-1

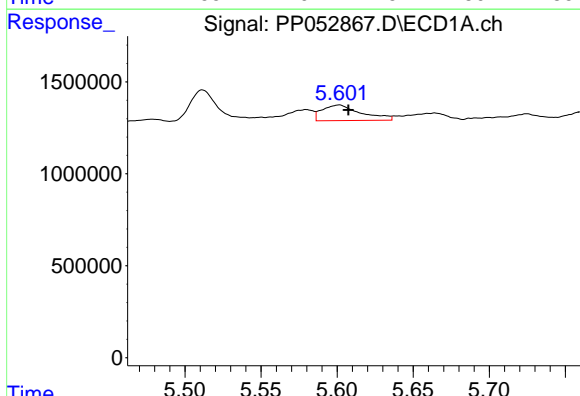
R.T.: 5.580 min  
 Delta R.T.: -0.005 min  
 Response: 945799  
 Conc: 14.11 ng/ml

Instrument :  
 ECD\_P  
 ClientSampleId :



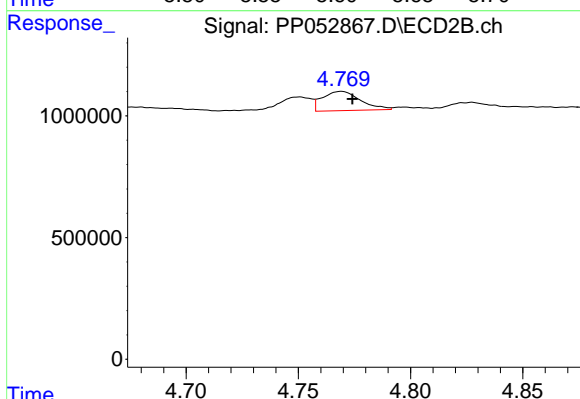
#3 AR-1016-1

R.T.: 4.751 min  
 Delta R.T.: -0.005 min  
 Response: 751343  
 Conc: 11.41 ng/ml



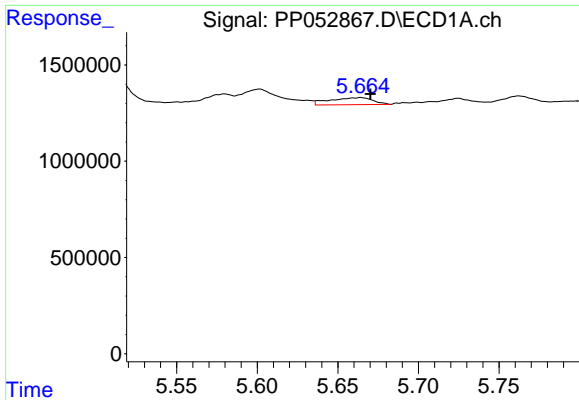
#4 AR-1016-2

R.T.: 5.601 min  
 Delta R.T.: -0.006 min  
 Response: 1509877  
 Conc: 15.12 ng/ml



#4 AR-1016-2

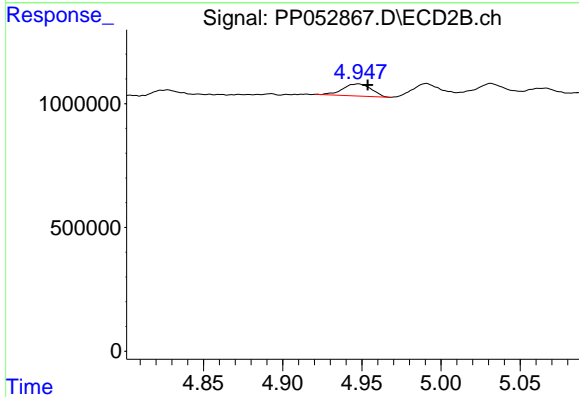
R.T.: 4.769 min  
 Delta R.T.: -0.005 min  
 Response: 937826  
 Conc: 10.22 ng/ml



#5 AR-1016-3

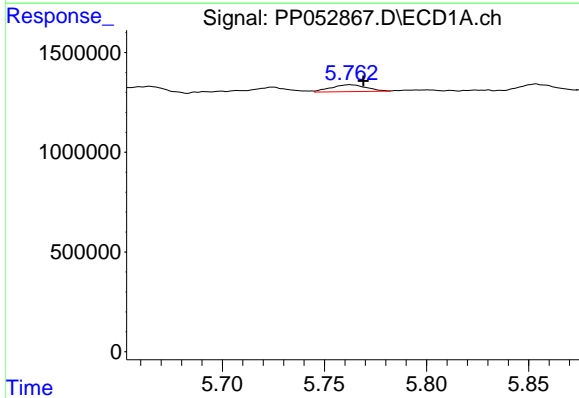
R.T.: 5.664 min  
 Delta R.T.: -0.006 min  
 Response: 682056  
 Conc: 11.21 ng/ml

Instrument :  
 ECD\_P  
 ClientSampleId :



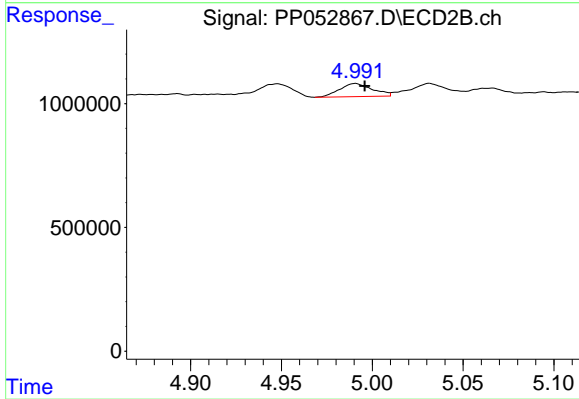
#5 AR-1016-3

R.T.: 4.948 min  
 Delta R.T.: -0.006 min  
 Response: 612995  
 Conc: 12.61 ng/ml



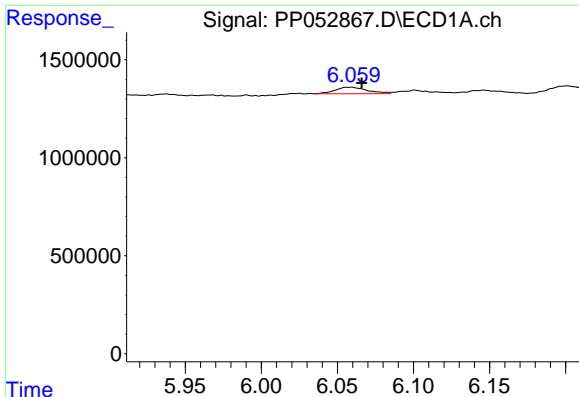
#6 AR-1016-4

R.T.: 5.763 min  
 Delta R.T.: -0.007 min  
 Response: 416726  
 Conc: 8.61 ng/ml



#6 AR-1016-4

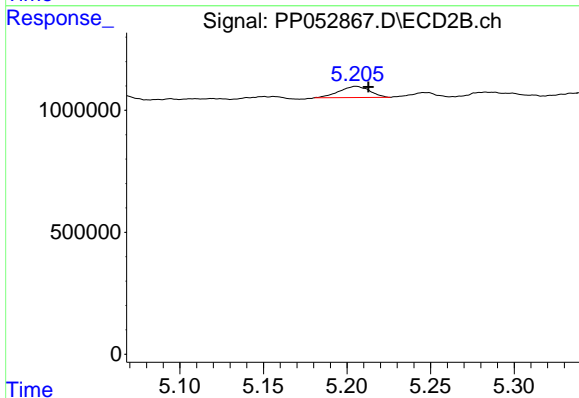
R.T.: 4.991 min  
 Delta R.T.: -0.005 min  
 Response: 668546  
 Conc: 17.16 ng/ml



#7 AR-1016-5

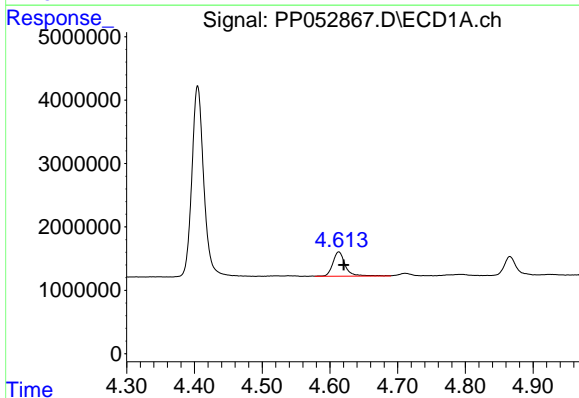
R.T.: 6.058 min  
 Delta R.T.: -0.008 min  
 Response: 495445  
 Conc: 10.29 ng/ml

Instrument :  
 ECD\_P  
 ClientSampleId :



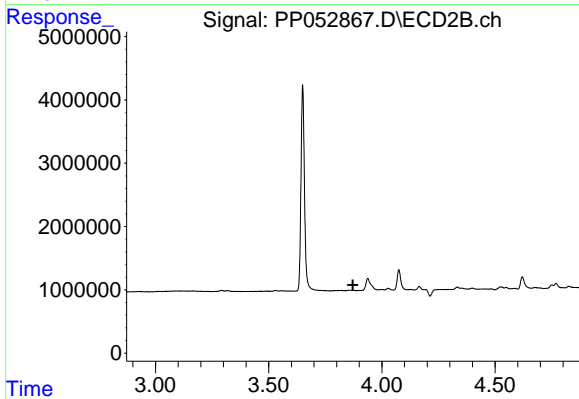
#7 AR-1016-5

R.T.: 5.205 min  
 Delta R.T.: -0.007 min  
 Response: 587968  
 Conc: 11.70 ng/ml



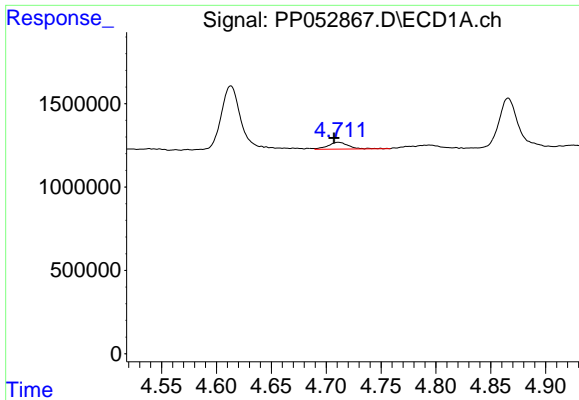
#8 AR-1221-1

R.T.: 4.613 min  
 Delta R.T.: -0.007 min  
 Response: 4916282  
 Conc: 191.73 ng/ml



#8 AR-1221-1

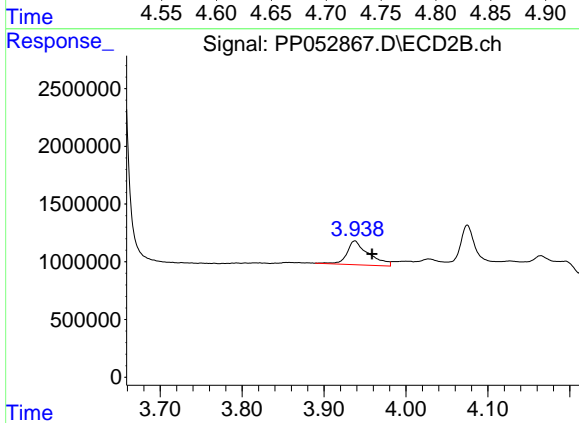
R.T.: 0.000 min  
 Exp R.T. : 3.872 min  
 Response: 0  
 Conc: N.D.



#9 AR-1221-2

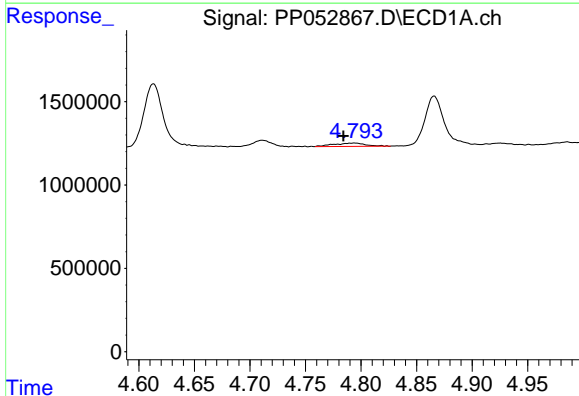
R.T.: 4.711 min  
 Delta R.T.: 0.004 min  
 Response: 538315  
 Conc: 28.30 ng/ml

Instrument :  
 ECD\_P  
 ClientSampleId :



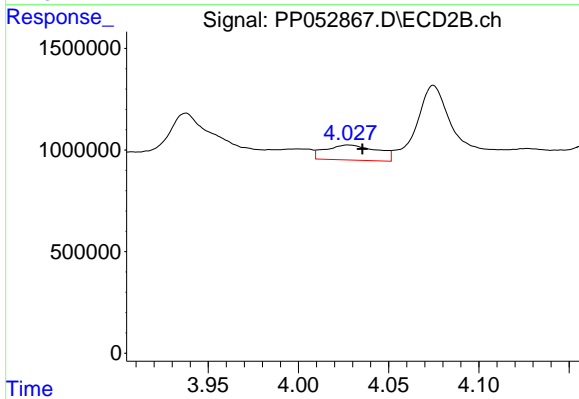
#9 AR-1221-2

R.T.: 3.938 min  
 Delta R.T.: -0.021 min  
 Response: 3779773  
 Conc: 215.92 ng/ml



#10 AR-1221-3

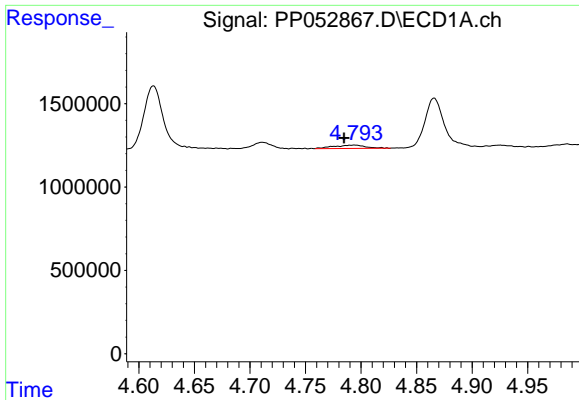
R.T.: 4.794 min  
 Delta R.T.: 0.010 min  
 Response: 414424  
 Conc: 7.27 ng/ml



#10 AR-1221-3

R.T.: 4.027 min  
 Delta R.T.: -0.008 min  
 Response: 1480856  
 Conc: 27.28 ng/ml

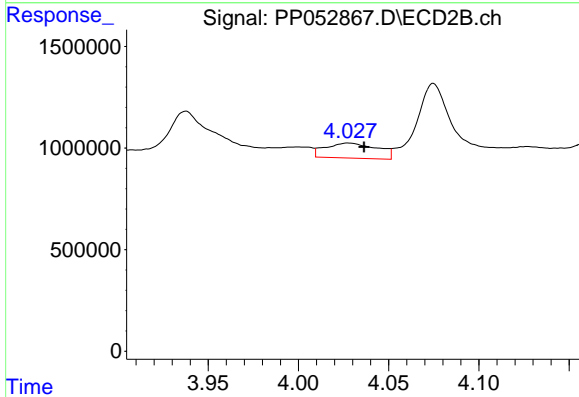




#11 AR-1232-1

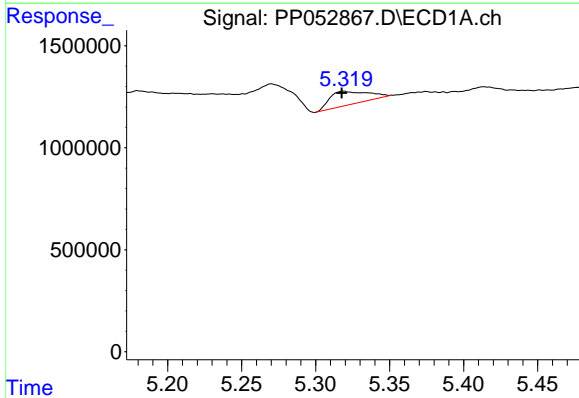
R.T.: 4.794 min  
 Delta R.T.: 0.009 min  
 Response: 414424  
 Conc: 9.55 ng/ml

Instrument :  
 ECD\_P  
 ClientSampleId :



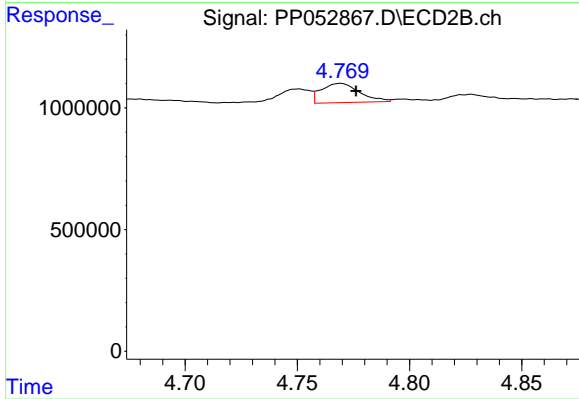
#11 AR-1232-1

R.T.: 4.027 min  
 Delta R.T.: -0.009 min  
 Response: 1480856  
 Conc: 35.52 ng/ml



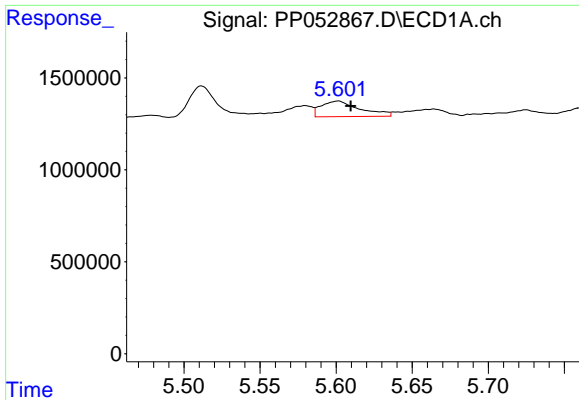
#12 AR-1232-2

R.T.: 5.319 min  
 Delta R.T.: 0.001 min  
 Response: 1189852  
 Conc: 47.96 ng/ml



#12 AR-1232-2

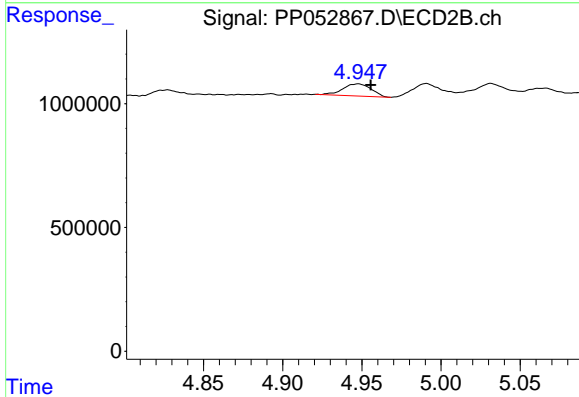
R.T.: 4.769 min  
 Delta R.T.: -0.007 min  
 Response: 937826  
 Conc: 22.62 ng/ml



#13 AR-1232-3

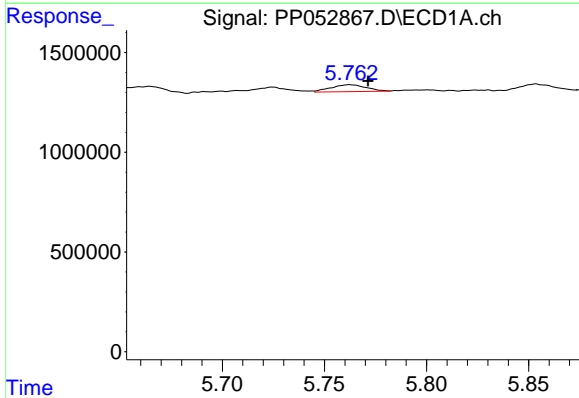
R.T.: 5.601 min  
 Delta R.T.: -0.008 min  
 Response: 1509877  
 Conc: 34.49 ng/ml

Instrument :  
 ECD\_P  
 ClientSampleId :



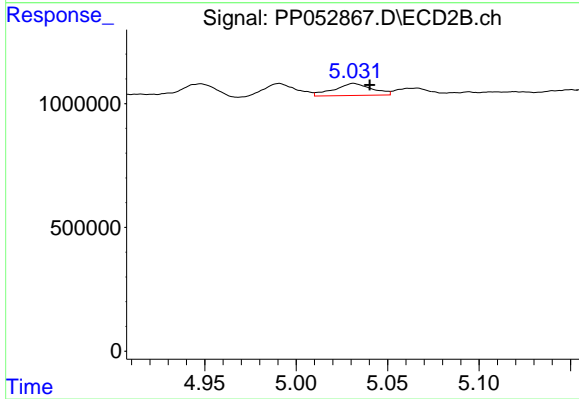
#13 AR-1232-3

R.T.: 4.948 min  
 Delta R.T.: -0.008 min  
 Response: 612995  
 Conc: 27.74 ng/ml



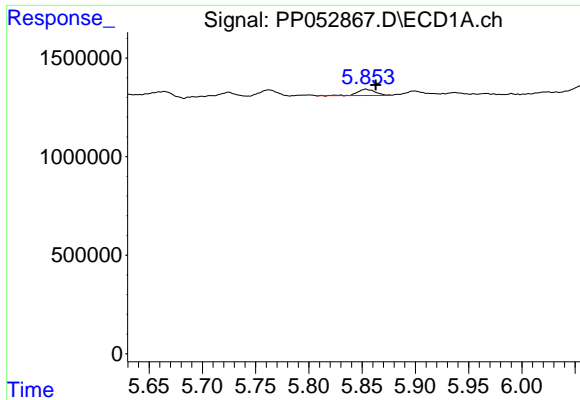
#14 AR-1232-4

R.T.: 5.763 min  
 Delta R.T.: -0.009 min  
 Response: 416726  
 Conc: 19.52 ng/ml



#14 AR-1232-4

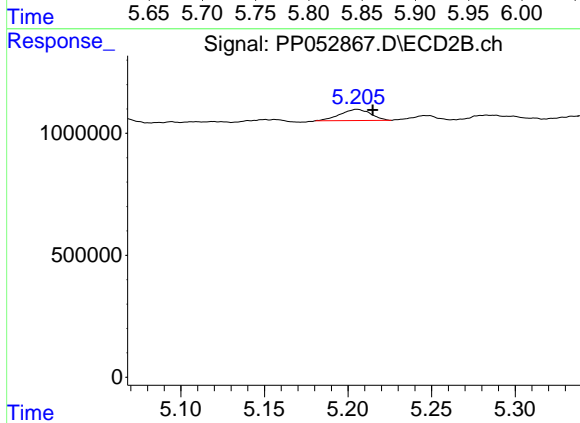
R.T.: 5.031 min  
 Delta R.T.: -0.009 min  
 Response: 699231  
 Conc: 34.02 ng/ml



#15 AR-1232-5

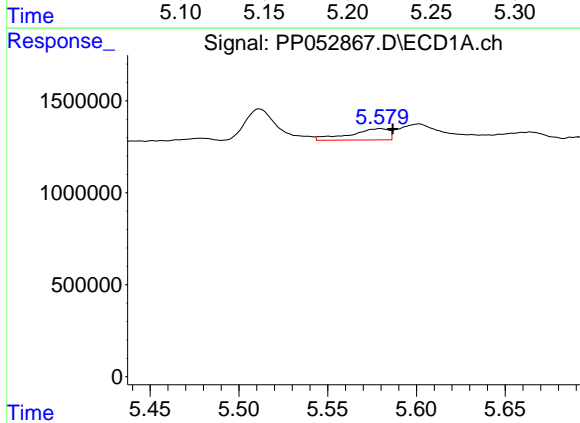
R.T.: 5.854 min  
 Delta R.T.: -0.009 min  
 Response: 357007  
 Conc: 20.74 ng/ml

Instrument :  
 ECD\_P  
 ClientSampleId :



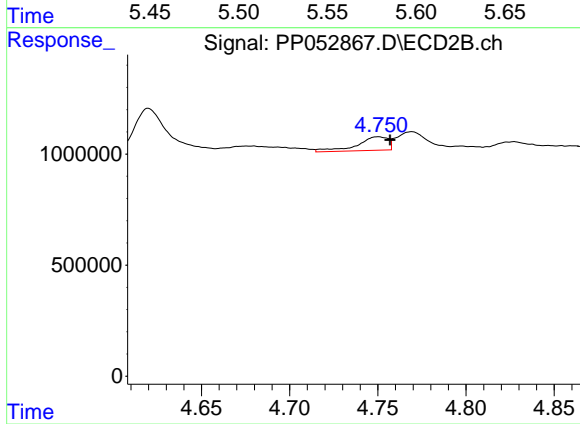
#15 AR-1232-5

R.T.: 5.205 min  
 Delta R.T.: -0.009 min  
 Response: 587968  
 Conc: 25.33 ng/ml



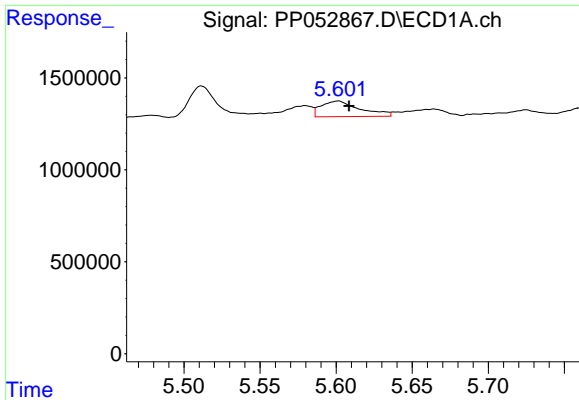
#16 AR-1242-1

R.T.: 5.580 min  
 Delta R.T.: -0.007 min  
 Response: 945799  
 Conc: 16.81 ng/ml



#16 AR-1242-1

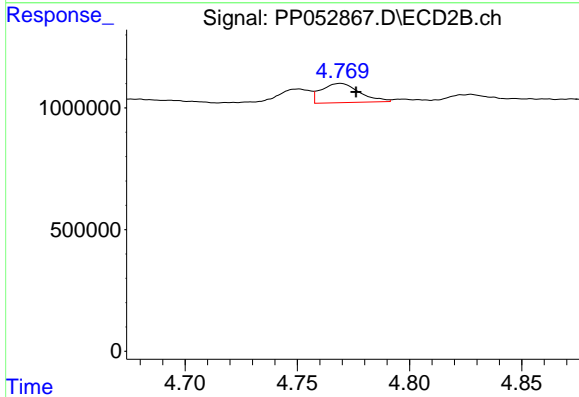
R.T.: 4.751 min  
 Delta R.T.: -0.007 min  
 Response: 751343  
 Conc: 13.46 ng/ml



#17 AR-1242-2

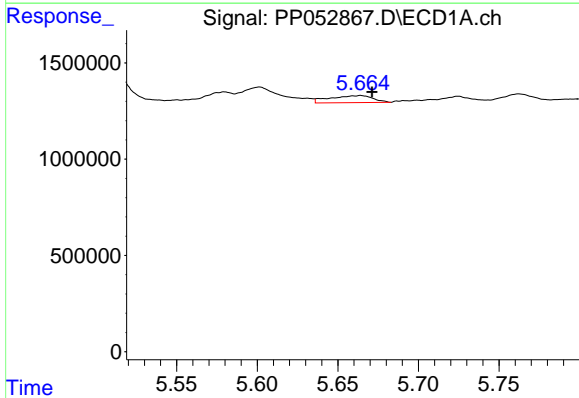
R.T.: 5.601 min  
 Delta R.T.: -0.007 min  
 Response: 1509877  
 Conc: 18.28 ng/ml

Instrument :  
 ECD\_P  
 ClientSampleId :



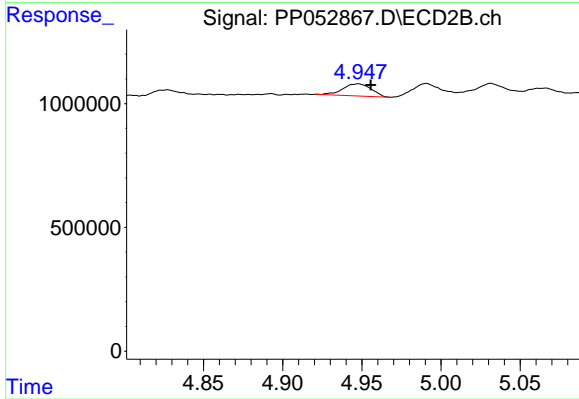
#17 AR-1242-2

R.T.: 4.769 min  
 Delta R.T.: -0.007 min  
 Response: 937826  
 Conc: 12.16 ng/ml



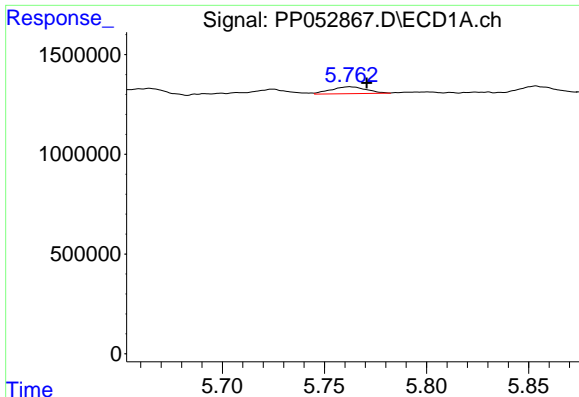
#18 AR-1242-3

R.T.: 5.664 min  
 Delta R.T.: -0.007 min  
 Response: 682056  
 Conc: 13.41 ng/ml



#18 AR-1242-3

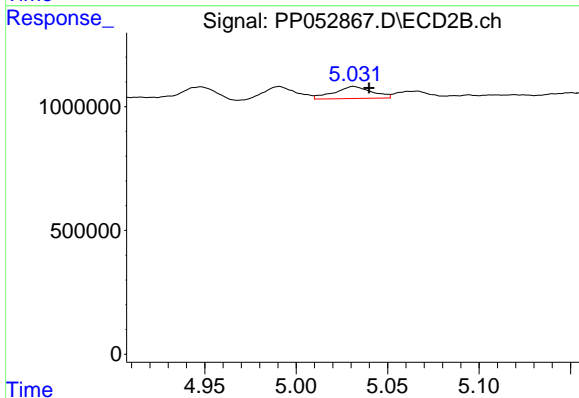
R.T.: 4.948 min  
 Delta R.T.: -0.008 min  
 Response: 612995  
 Conc: 14.94 ng/ml



#19 AR-1242-4

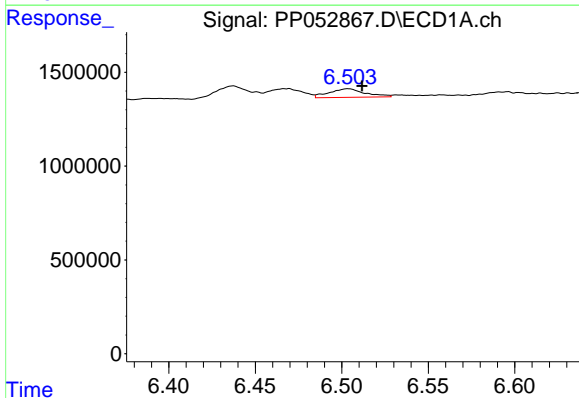
R.T.: 5.763 min  
 Delta R.T.: -0.008 min  
 Response: 416726  
 Conc: 10.29 ng/ml

Instrument :  
 ECD\_P  
 ClientSampleId :



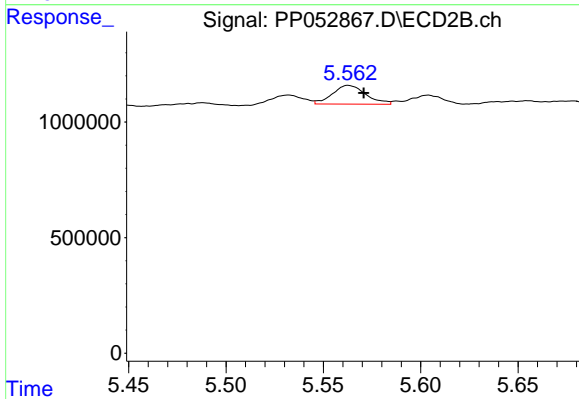
#19 AR-1242-4

R.T.: 5.031 min  
 Delta R.T.: -0.009 min  
 Response: 699231  
 Conc: 16.49 ng/ml



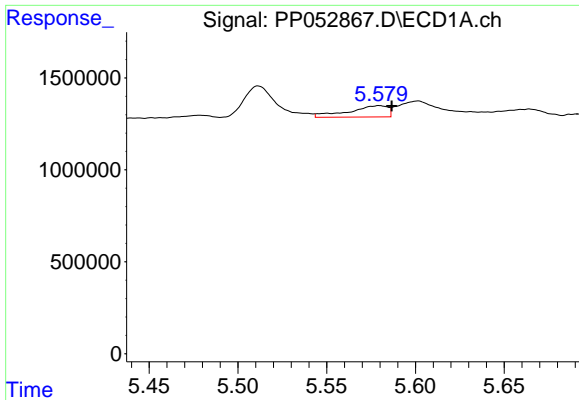
#20 AR-1242-5

R.T.: 6.504 min  
 Delta R.T.: -0.008 min  
 Response: 666988  
 Conc: 16.73 ng/ml



#20 AR-1242-5

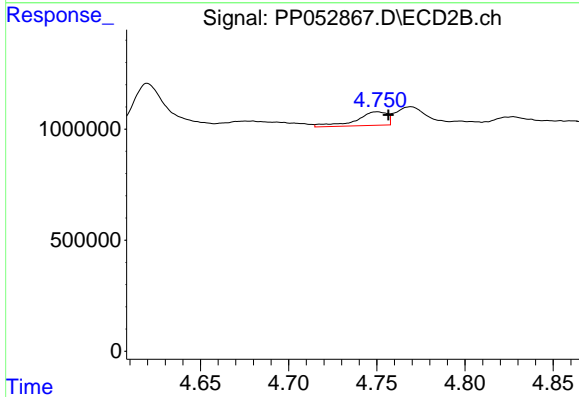
R.T.: 5.563 min  
 Delta R.T.: -0.008 min  
 Response: 969848  
 Conc: 19.19 ng/ml



#21 AR-1248-1

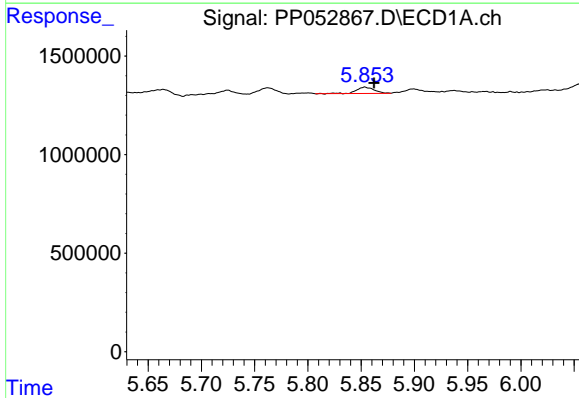
R.T.: 5.580 min  
 Delta R.T.: -0.007 min  
 Response: 945799  
 Conc: 23.29 ng/ml

Instrument :  
 ECD\_P  
 ClientSampleId :



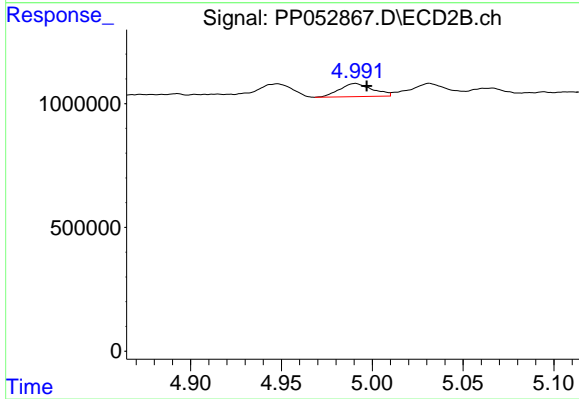
#21 AR-1248-1

R.T.: 4.751 min  
 Delta R.T.: -0.006 min  
 Response: 751343  
 Conc: 18.77 ng/ml



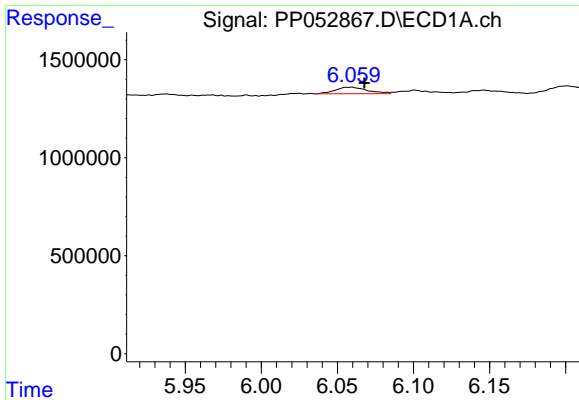
#22 AR-1248-2

R.T.: 5.854 min  
 Delta R.T.: -0.009 min  
 Response: 357007  
 Conc: 6.00 ng/ml



#22 AR-1248-2

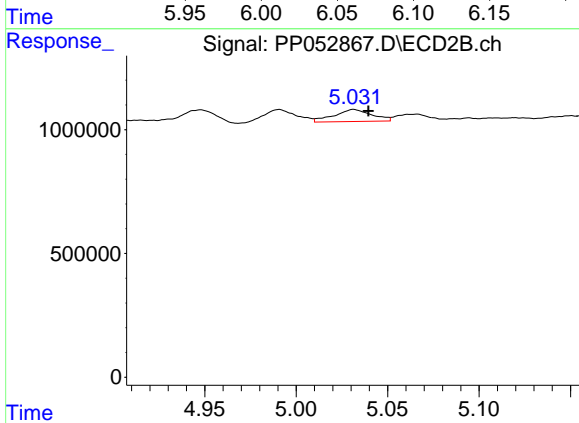
R.T.: 4.991 min  
 Delta R.T.: -0.006 min  
 Response: 668546  
 Conc: 11.81 ng/ml



#23 AR-1248-3

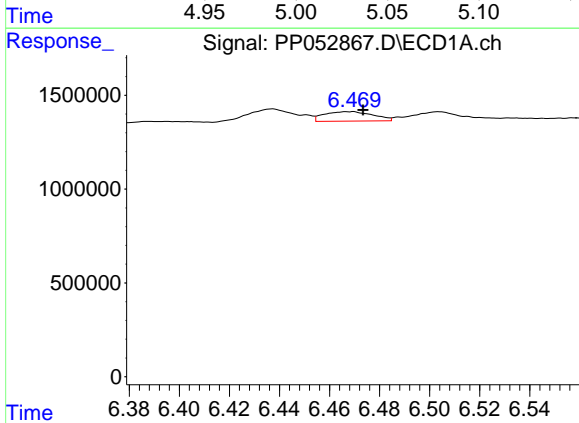
R.T.: 6.058 min  
 Delta R.T.: -0.009 min  
 Response: 495445  
 Conc: 7.63 ng/ml

Instrument :  
 ECD\_P  
 ClientSampleId :



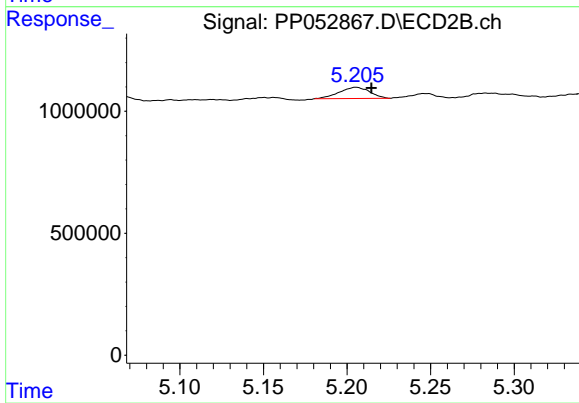
#23 AR-1248-3

R.T.: 5.031 min  
 Delta R.T.: -0.008 min  
 Response: 699231  
 Conc: 11.91 ng/ml



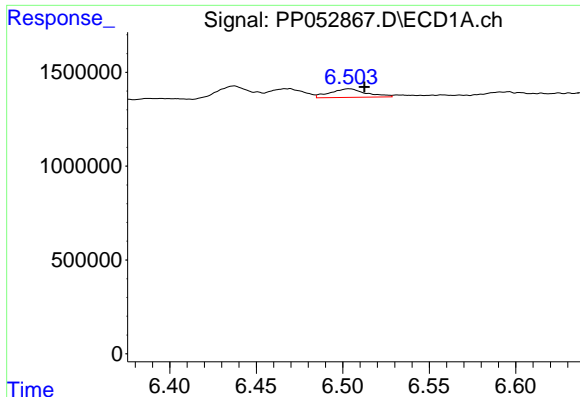
#24 AR-1248-4

R.T.: 6.468 min  
 Delta R.T.: -0.005 min  
 Response: 688200  
 Conc: 10.69 ng/ml



#24 AR-1248-4

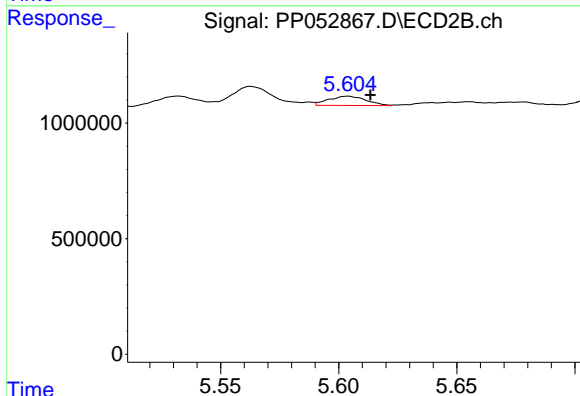
R.T.: 5.205 min  
 Delta R.T.: -0.009 min  
 Response: 587968  
 Conc: 8.44 ng/ml



#25 AR-1248-5

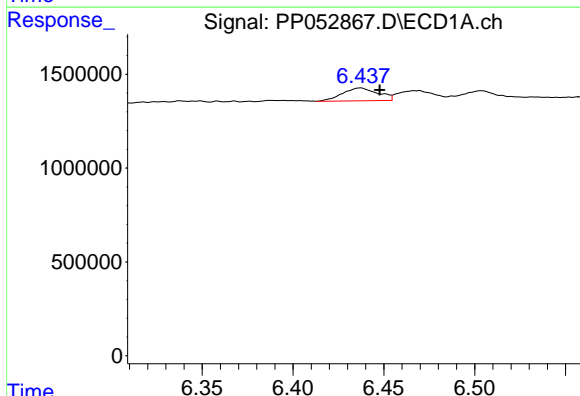
R.T.: 6.504 min  
 Delta R.T.: -0.009 min  
 Response: 666988  
 Conc: 10.53 ng/ml

Instrument :  
 ECD\_P  
 ClientSampleId :



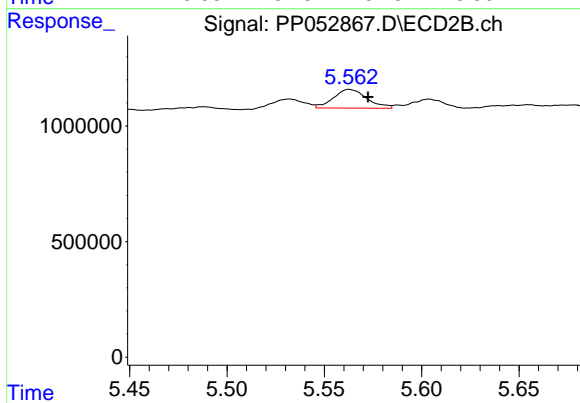
#25 AR-1248-5

R.T.: 5.604 min  
 Delta R.T.: -0.009 min  
 Response: 441307  
 Conc: 6.96 ng/ml



#26 AR-1254-1

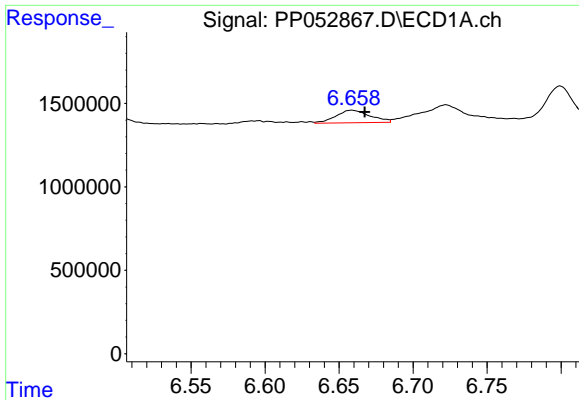
R.T.: 6.437 min  
 Delta R.T.: -0.011 min  
 Response: 933915  
 Conc: 12.30 ng/ml



#26 AR-1254-1

R.T.: 5.563 min  
 Delta R.T.: -0.010 min  
 Response: 969848  
 Conc: 9.03 ng/ml

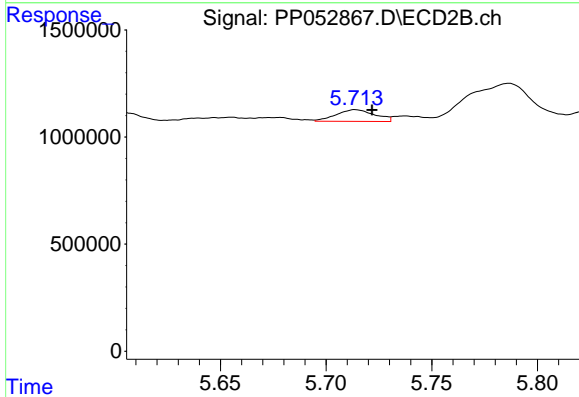




#27 AR-1254-2

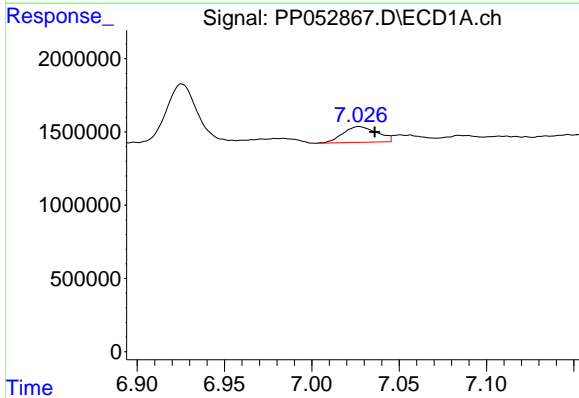
R.T.: 6.659 min  
 Delta R.T.: -0.009 min  
 Response: 1225442  
 Conc: 10.96 ng/ml

Instrument :  
 ECD\_P  
 ClientSampleId :



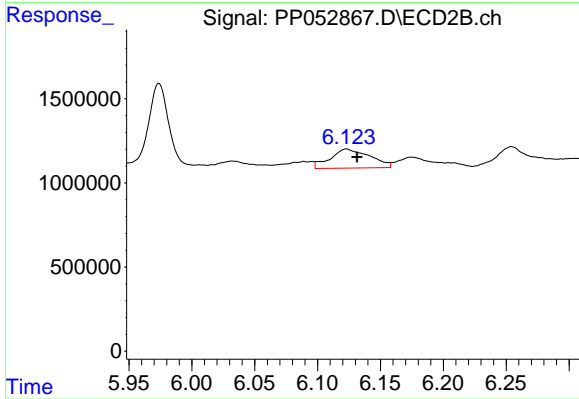
#27 AR-1254-2

R.T.: 5.714 min  
 Delta R.T.: -0.008 min  
 Response: 694528  
 Conc: 7.27 ng/ml



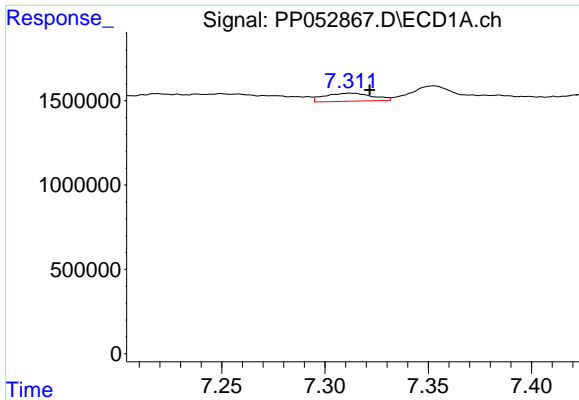
#28 AR-1254-3

R.T.: 7.027 min  
 Delta R.T.: -0.009 min  
 Response: 1470061  
 Conc: 13.21 ng/ml



#28 AR-1254-3

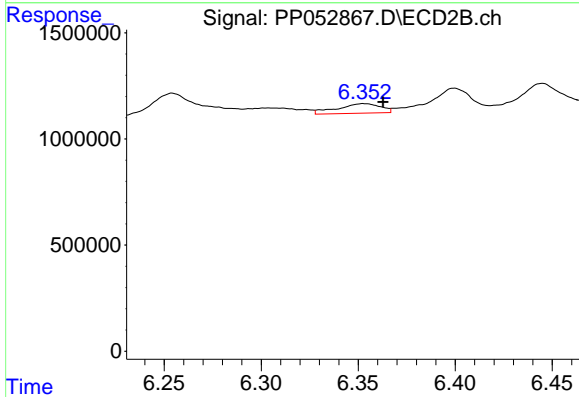
R.T.: 6.123 min  
 Delta R.T.: -0.009 min  
 Response: 2484228  
 Conc: 16.26 ng/ml



#29 AR-1254-4

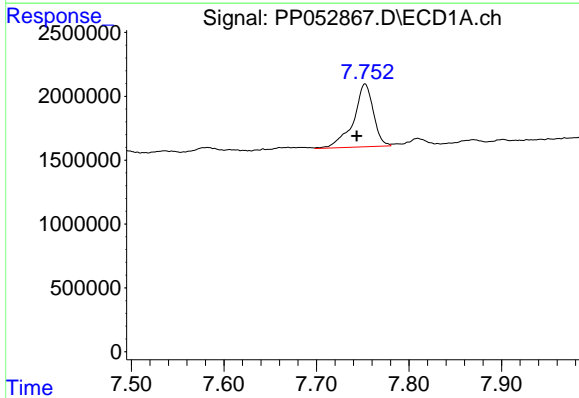
R.T.: 7.313 min  
 Delta R.T.: -0.009 min  
 Response: 766137  
 Conc: 10.88 ng/ml

Instrument :  
 ECD\_P  
 ClientSampleId :



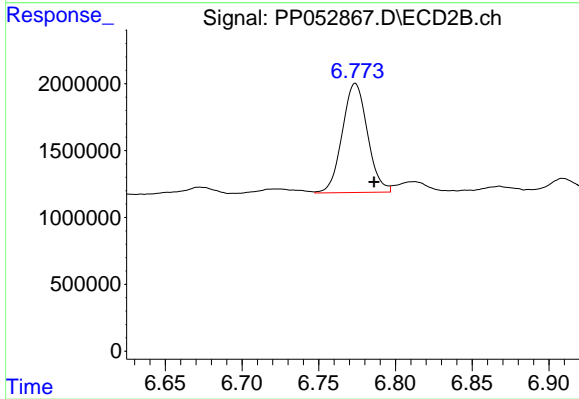
#29 AR-1254-4

R.T.: 6.353 min  
 Delta R.T.: -0.010 min  
 Response: 698830  
 Conc: 7.70 ng/ml



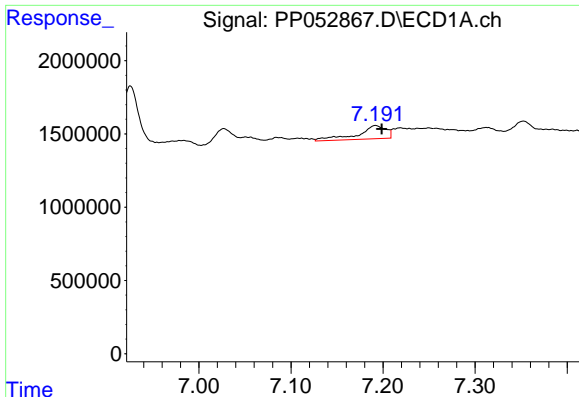
#30 AR-1254-5

R.T.: 7.752 min  
 Delta R.T.: 0.009 min  
 Response: 7348166  
 Conc: 93.33 ng/ml



#30 AR-1254-5

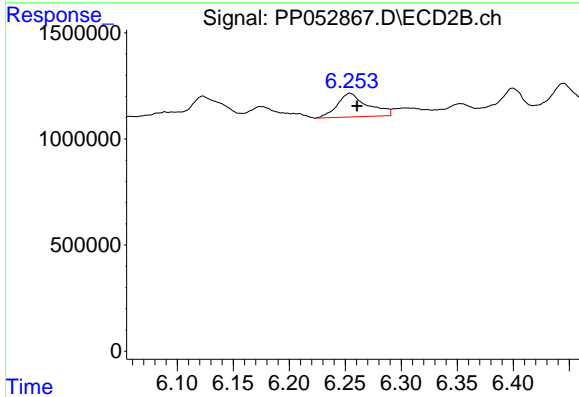
R.T.: 6.774 min  
 Delta R.T.: -0.012 min  
 Response: 9373202  
 Conc: 67.37 ng/ml



#31 AR-1260-1

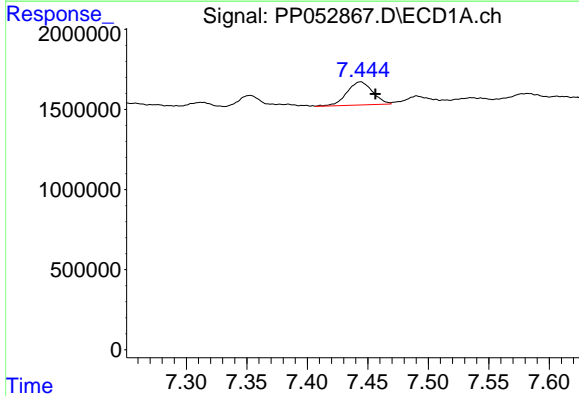
R.T.: 7.192 min  
 Delta R.T.: -0.007 min  
 Response: 1930322  
 Conc: 22.60 ng/ml

Instrument :  
 ECD\_P  
 ClientSampleId :



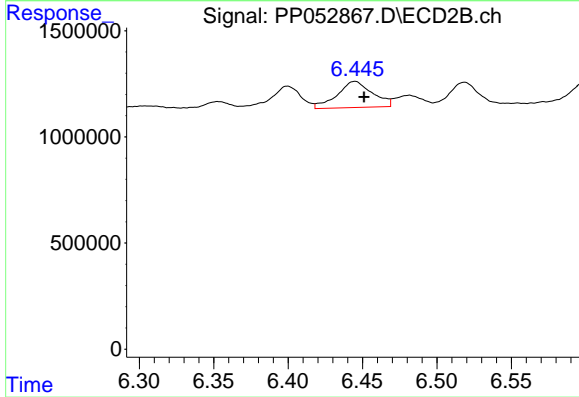
#31 AR-1260-1

R.T.: 6.254 min  
 Delta R.T.: -0.007 min  
 Response: 2103337  
 Conc: 20.68 ng/ml



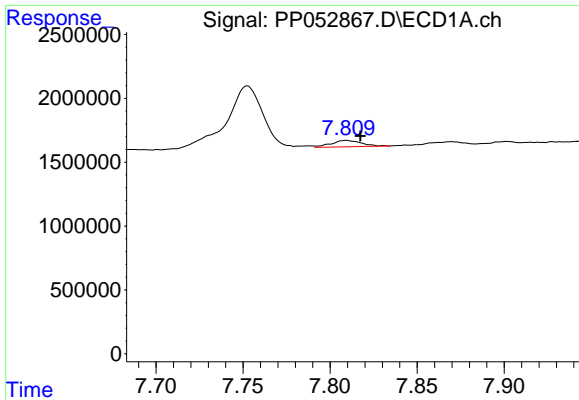
#32 AR-1260-2

R.T.: 7.444 min  
 Delta R.T.: -0.012 min  
 Response: 2132359  
 Conc: 22.83 ng/ml



#32 AR-1260-2

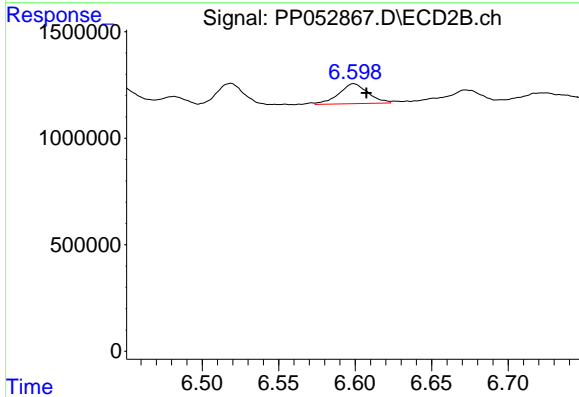
R.T.: 6.445 min  
 Delta R.T.: -0.006 min  
 Response: 2026969  
 Conc: 16.67 ng/ml



#33 AR-1260-3

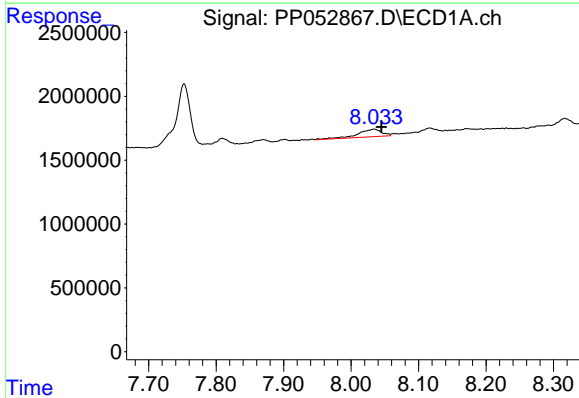
R.T.: 7.809 min  
 Delta R.T.: -0.008 min  
 Response: 614296  
 Conc: 9.72 ng/ml

Instrument :  
 ECD\_P  
 ClientSampleId :



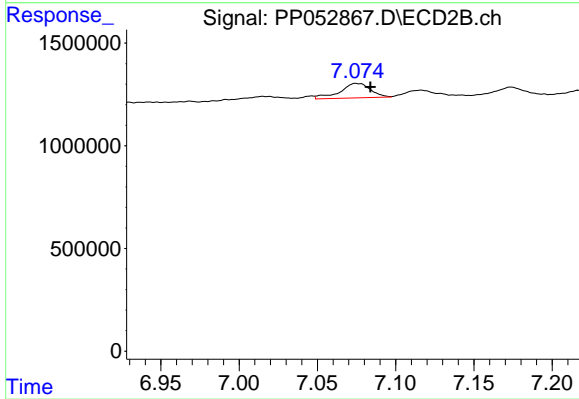
#33 AR-1260-3

R.T.: 6.599 min  
 Delta R.T.: -0.008 min  
 Response: 1237141  
 Conc: 10.61 ng/ml



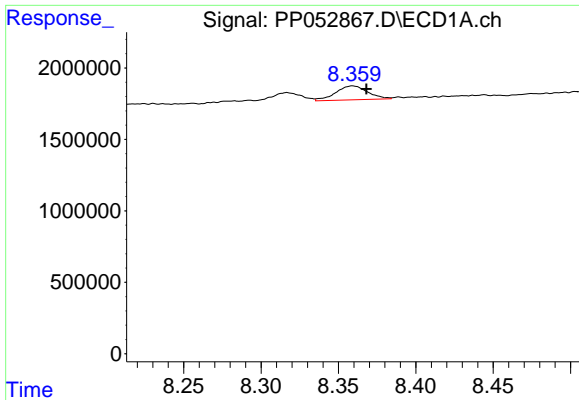
#34 AR-1260-4

R.T.: 8.034 min  
 Delta R.T.: -0.011 min  
 Response: 1460094  
 Conc: 20.39 ng/ml



#34 AR-1260-4

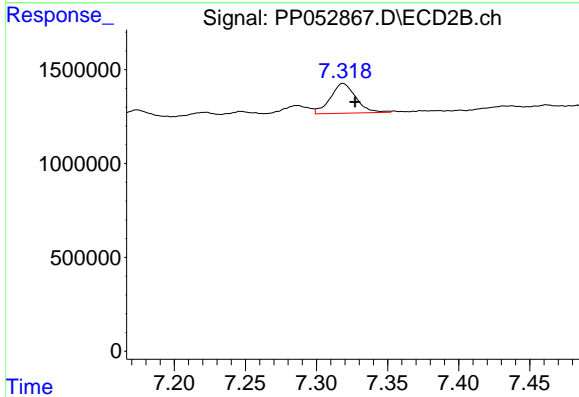
R.T.: 7.074 min  
 Delta R.T.: -0.009 min  
 Response: 956754  
 Conc: 10.63 ng/ml



#35 AR-1260-5

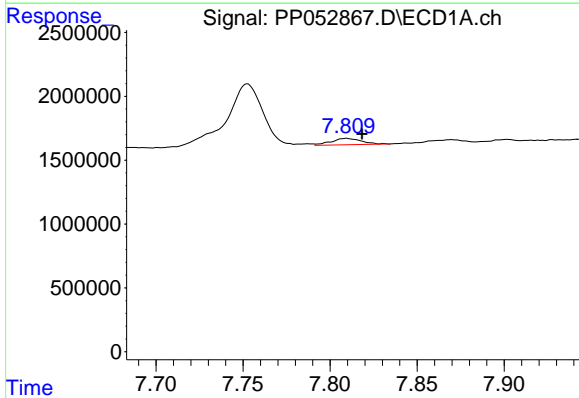
R.T.: 8.359 min  
 Delta R.T.: -0.009 min  
 Response: 1407309  
 Conc: 11.07 ng/ml

Instrument :  
 ECD\_P  
 ClientSampleId :



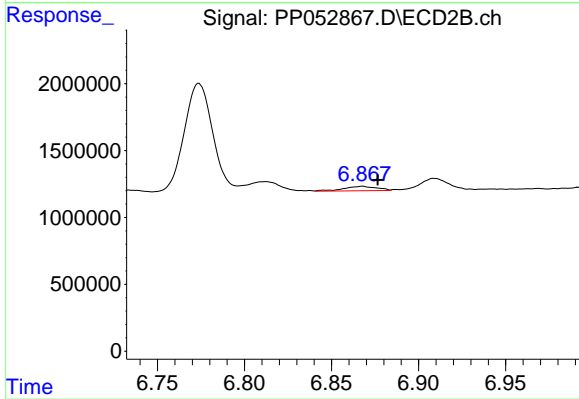
#35 AR-1260-5

R.T.: 7.319 min  
 Delta R.T.: -0.008 min  
 Response: 1971214  
 Conc: 9.62 ng/ml



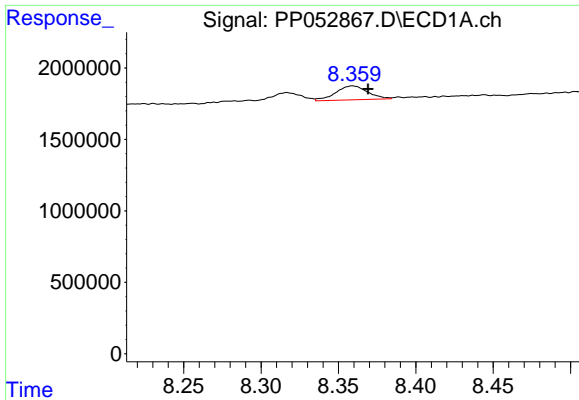
#36 AR-1262-1

R.T.: 7.809 min  
 Delta R.T.: -0.009 min  
 Response: 614296  
 Conc: 6.41 ng/ml



#36 AR-1262-1

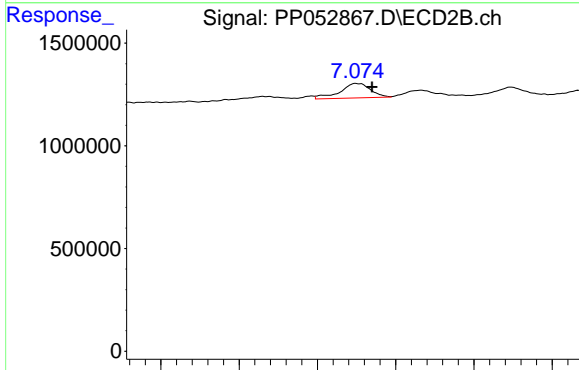
R.T.: 6.868 min  
 Delta R.T.: -0.009 min  
 Response: 441689  
 Conc: 7.71 ng/ml



#37 AR-1262-2

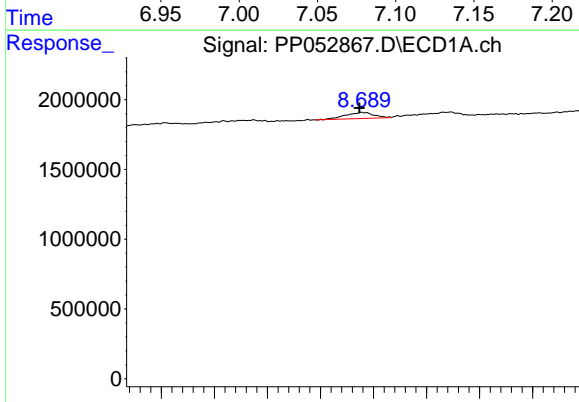
R.T.: 8.359 min  
 Delta R.T.: -0.010 min  
 Response: 1407309  
 Conc: 9.46 ng/ml

Instrument :  
 ECD\_P  
 ClientSampleId :



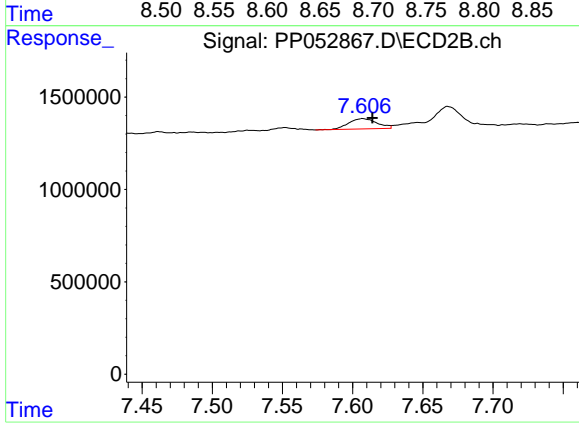
#37 AR-1262-2

R.T.: 7.074 min  
 Delta R.T.: -0.010 min  
 Response: 956754  
 Conc: 7.73 ng/ml



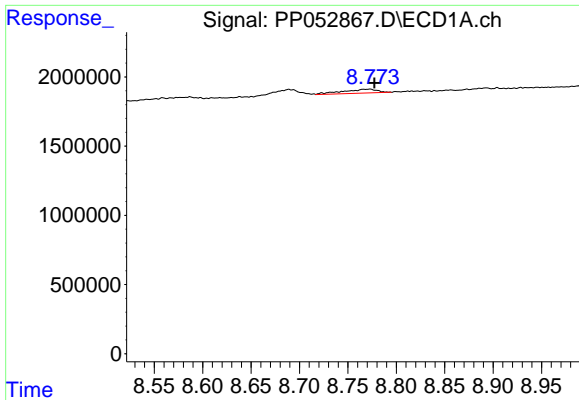
#38 AR-1262-3

R.T.: 8.689 min  
 Delta R.T.: 0.002 min  
 Response: 803247  
 Conc: 8.10 ng/ml



#38 AR-1262-3

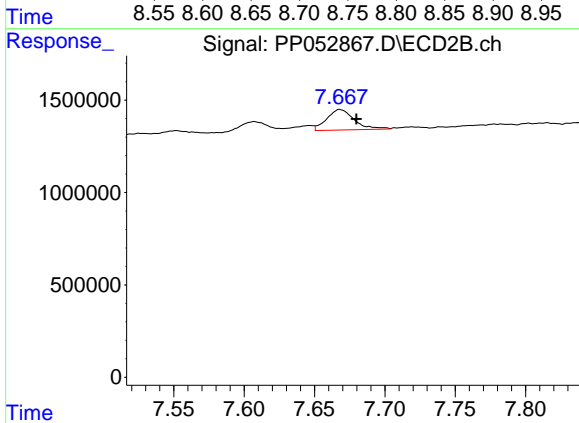
R.T.: 7.607 min  
 Delta R.T.: -0.007 min  
 Response: 783955  
 Conc: 7.77 ng/ml



#39 AR-1262-4

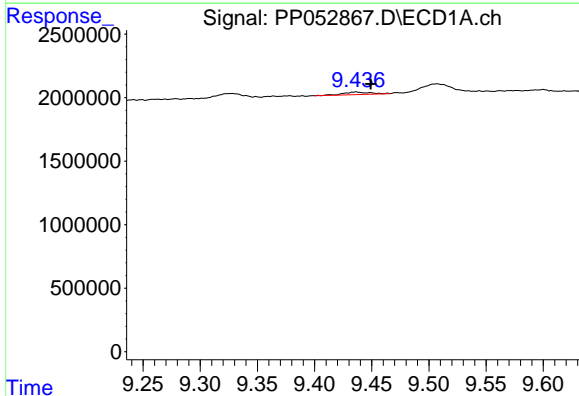
R.T.: 8.773 min  
 Delta R.T.: -0.005 min  
 Response: 703601  
 Conc: 15.10 ng/ml

Instrument :  
 ECD\_P  
 ClientSampleId :



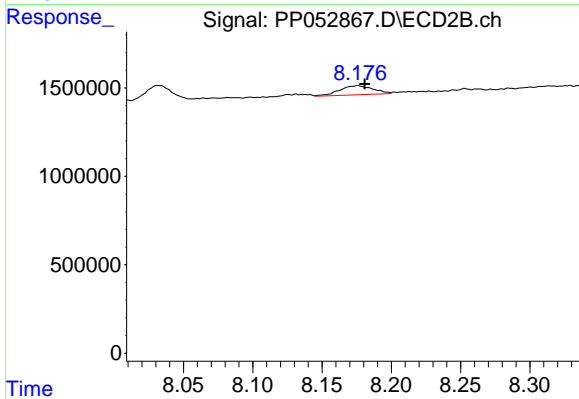
#39 AR-1262-4

R.T.: 7.668 min  
 Delta R.T.: -0.012 min  
 Response: 1515023  
 Conc: 8.47 ng/ml



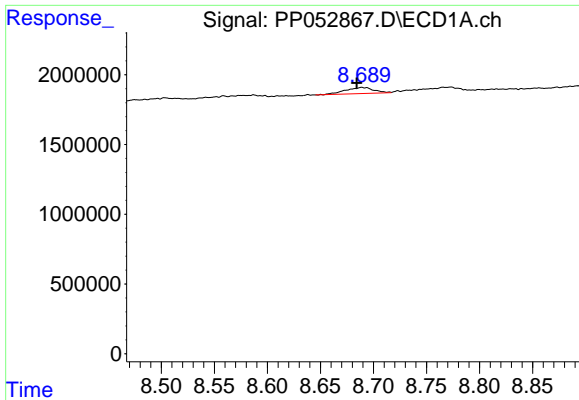
#40 AR-1262-5

R.T.: 9.436 min  
 Delta R.T.: -0.013 min  
 Response: 323588  
 Conc: 7.07 ng/ml



#40 AR-1262-5

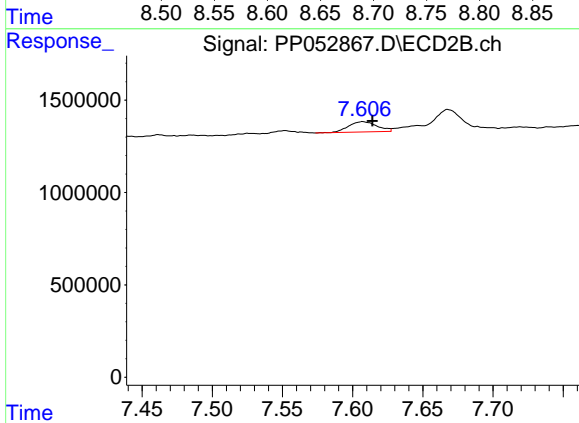
R.T.: 8.176 min  
 Delta R.T.: -0.005 min  
 Response: 864248  
 Conc: 11.54 ng/ml



#41 AR-1268-1

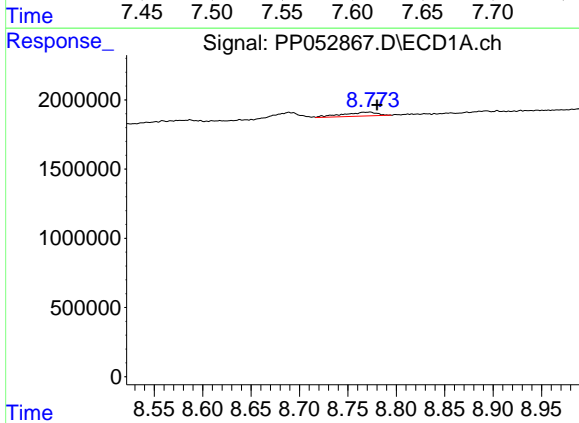
R.T.: 8.689 min  
 Delta R.T.: 0.005 min  
 Response: 803247  
 Conc: 4.27 ng/ml

Instrument :  
 ECD\_P  
 ClientSampleId :



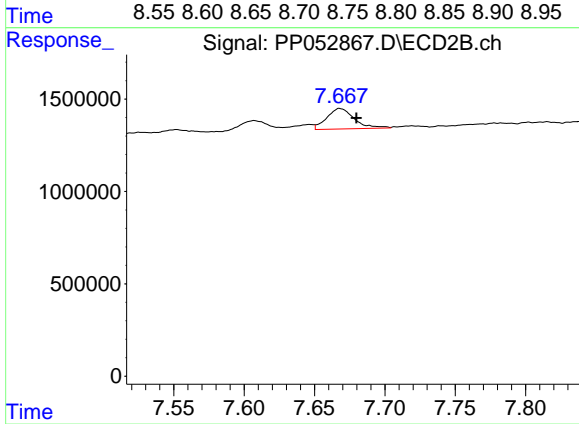
#41 AR-1268-1

R.T.: 7.607 min  
 Delta R.T.: -0.007 min  
 Response: 783955  
 Conc: 2.56 ng/ml



#42 AR-1268-2

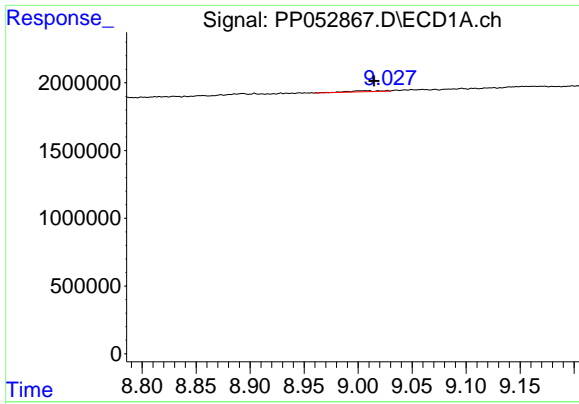
R.T.: 8.773 min  
 Delta R.T.: -0.007 min  
 Response: 703601  
 Conc: 4.30 ng/ml



#42 AR-1268-2

R.T.: 7.668 min  
 Delta R.T.: -0.012 min  
 Response: 1515023  
 Conc: 5.59 ng/ml

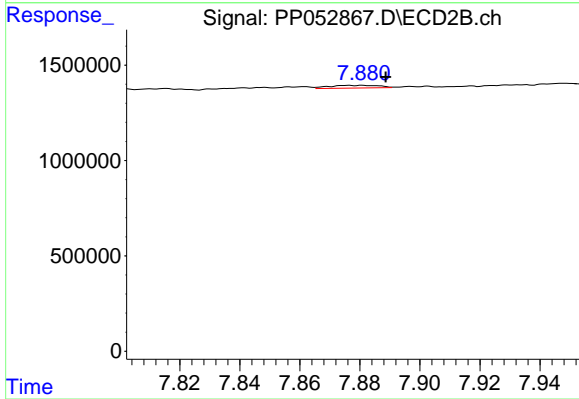




#43 AR-1268-3

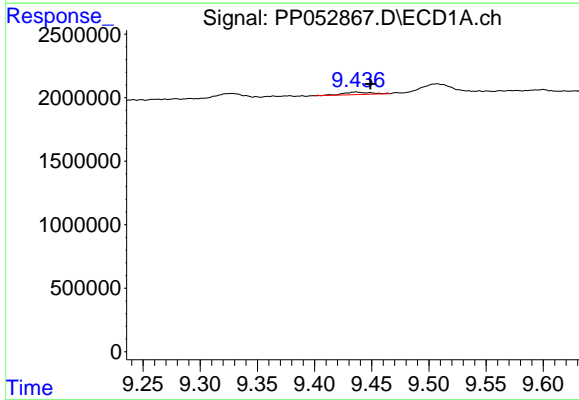
R.T.: 9.007 min  
 Delta R.T.: -0.008 min  
 Response: 151162  
 Conc: 1.00 ng/ml

Instrument :  
 ECD\_P  
 ClientSampleId :



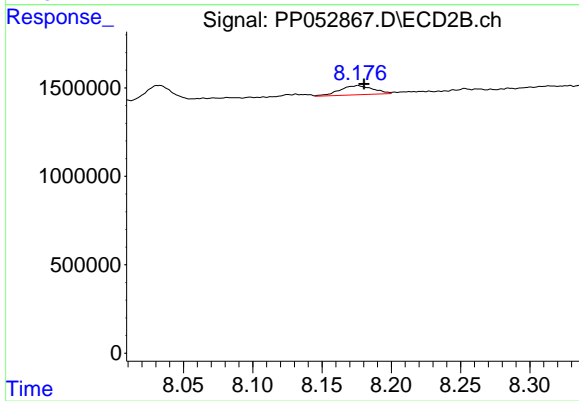
#43 AR-1268-3

R.T.: 7.876 min  
 Delta R.T.: -0.012 min  
 Response: 169322  
 Conc: 0.72 ng/ml



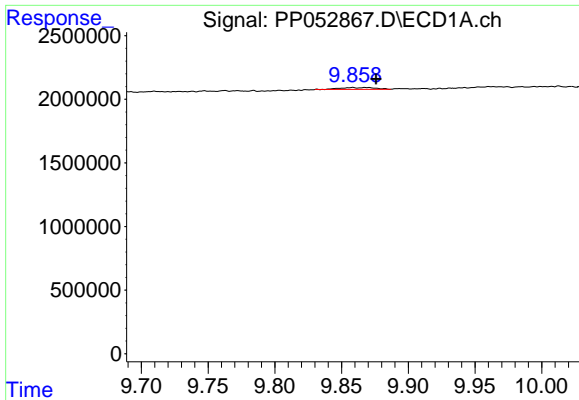
#44 AR-1268-4

R.T.: 9.436 min  
 Delta R.T.: -0.012 min  
 Response: 323588  
 Conc: 6.36 ng/ml



#44 AR-1268-4

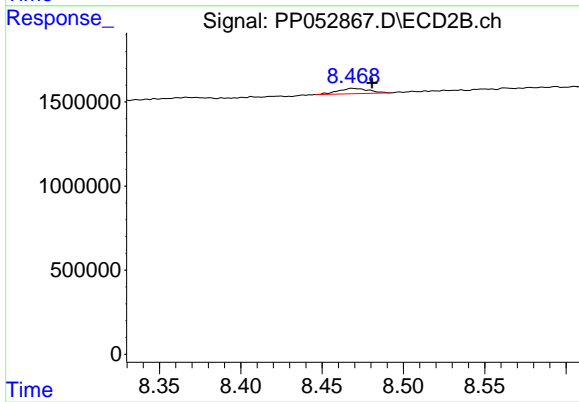
R.T.: 8.176 min  
 Delta R.T.: -0.004 min  
 Response: 864248  
 Conc: 10.17 ng/ml



#45 AR-1268-5

R.T.: 9.858 min  
Delta R.T.: -0.018 min  
Response: 269273  
Conc: 0.63 ng/ml

Instrument :  
ECD\_P  
ClientSampleId :



#45 AR-1268-5

R.T.: 8.468 min  
Delta R.T.: -0.012 min  
Response: 418742  
Conc: 0.64 ng/ml