

Data Path : Z:\pestpcbsrv\HPCHEM1\ECD_P\Data\PP102822\
 Data File : PP052851.D
 Signal(s) : Signal #1: ECD1A.ch Signal #2: ECD2B.ch
 Acq On : 29 Oct 2022 01:51
 Operator : YP\AJ
 Sample : PB148614BSD
 Misc :
 ALS Vial : 28 Sample Multiplier: 1

Instrument :
 ECD_P
ClientSampleId :
 PB148614BSD

Integration File signal 1: autoint1.e
 Integration File signal 2: autoint2.e
 Quant Time: Oct 29 09:30:40 2022
 Quant Method : Z:\pestpcbsrv\HPCHEM1\ECD_P\methods\PP102622.M
 Quant Title : GC EXTRACTABLES
 QLast Update : Thu Oct 27 04:46:37 2022
 Response via : Initial Calibration
 Integrator: ChemStation

Volume Inj. : 2 µl
 Signal #1 Phase : ZB-MR1 Signal #2 Phase: ZB-MR2
 Signal #1 Info : 30Mx0.32mmx 0.50µ Signal #2 Info : 30M x 0.32mm x 0.25µm

Compound	RT#1	RT#2	Resp#1	Resp#2	ng/ml	ng/ml

System Monitoring Compounds						
1) SA Tetrachlo...	4.405	3.651	40758528	35833656	18.445	19.068
2) SA Decachlor...	10.209	8.733	27100305	35179578	21.350	20.976
Target Compounds						
3) L1 AR-1016-1	5.579	4.751	27540487	28355047	410.782	430.770
4) L1 AR-1016-2	5.601	4.770	40957198	39681546	410.047	432.244
5) L1 AR-1016-3	5.664	4.949	24944707	21013440	409.865	432.196
6) L1 AR-1016-4	5.763	4.991	20078090	17361302	414.608	445.623
7) L1 AR-1016-5	6.059	5.208	19949894	22123479	414.200	440.303
31) L7 AR-1260-1	7.191	6.255	35972750	43236136	421.101	425.084
32) L7 AR-1260-2	7.449	6.445	39941581	52915609	427.726	435.113
33) L7 AR-1260-3	7.810	6.601	26112947	50012501	413.274	428.750
34) L7 AR-1260-4	8.037	7.077	31081549	37716954	434.086	418.889
35) L7 AR-1260-5	8.360	7.321	55731437	86261743	438.465	421.102

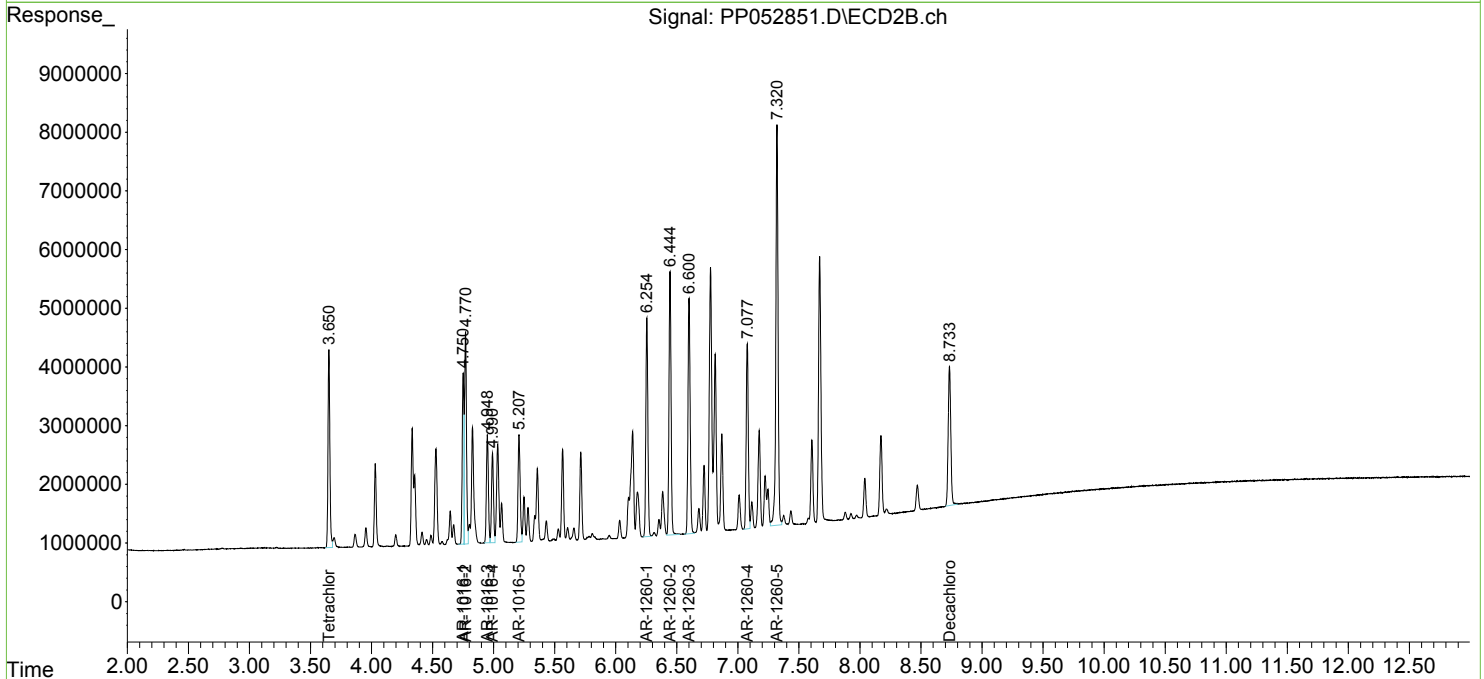
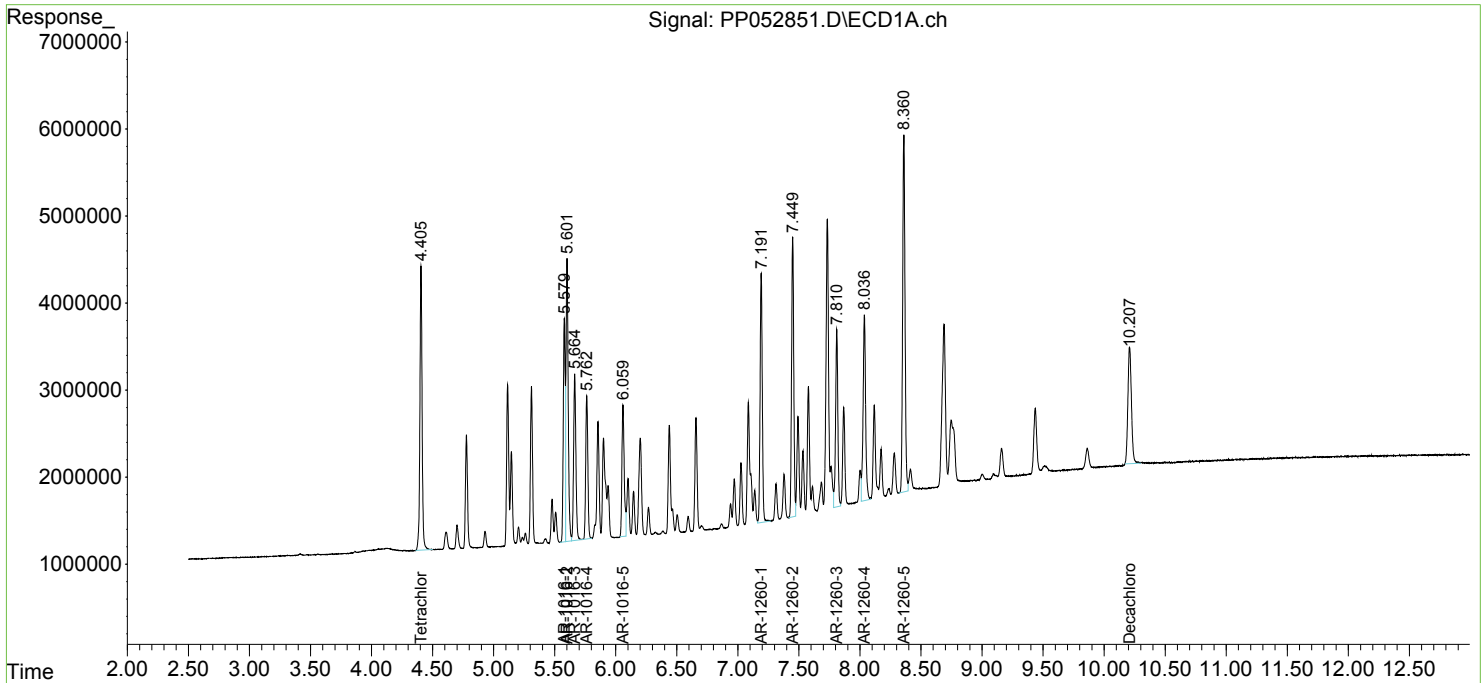
(f)=RT Delta > 1/2 Window (#)=Amounts differ by > 25% (m)=manual int.

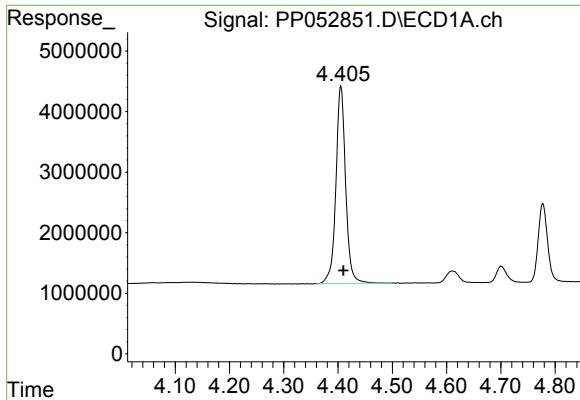
Data Path : Z:\pestpcbsrv\HPCHEM1\ECD_P\Data\PP102822\
 Data File : PP052851.D
 Signal(s) : Signal #1: ECD1A.ch Signal #2: ECD2B.ch
 Acq On : 29 Oct 2022 01:51
 Operator : YP\AJ
 Sample : PB148614BSD
 Misc :
 ALS Vial : 28 Sample Multiplier: 1

Instrument :
 ECD_P
 ClientSampleId :
 PB148614BSD

Integration File signal 1: autoint1.e
 Integration File signal 2: autoint2.e
 Quant Time: Oct 29 09:30:40 2022
 Quant Method : Z:\pestpcbsrv\HPCHEM1\ECD_P\methods\PP102622.M
 Quant Title : GC EXTRACTABLES
 QLast Update : Thu Oct 27 04:46:37 2022
 Response via : Initial Calibration
 Integrator: ChemStation

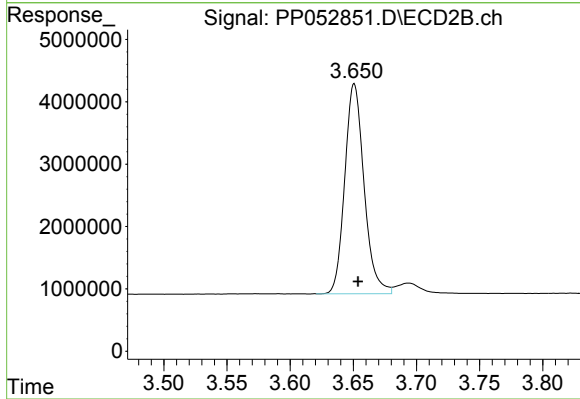
Volume Inj. : 2 µl
 Signal #1 Phase : ZB-MR1 Signal #2 Phase: ZB-MR2
 Signal #1 Info : 30Mx0.32mmx 0.50µ Signal #2 Info : 30M x 0.32mm x 0.25µm



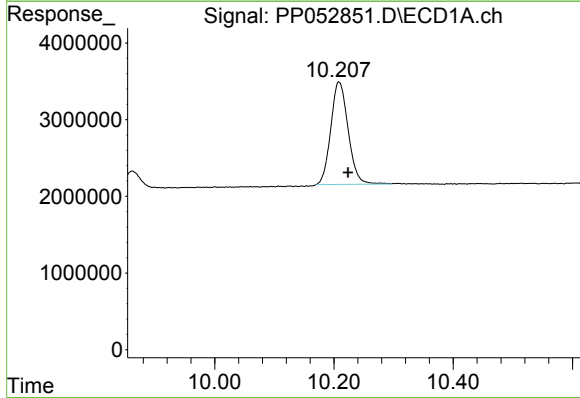


#1 Tetrachloro-m-xylene
 R.T.: 4.405 min
 Delta R.T.: -0.005 min
 Response: 40758528
 Conc: 18.45 ng/ml

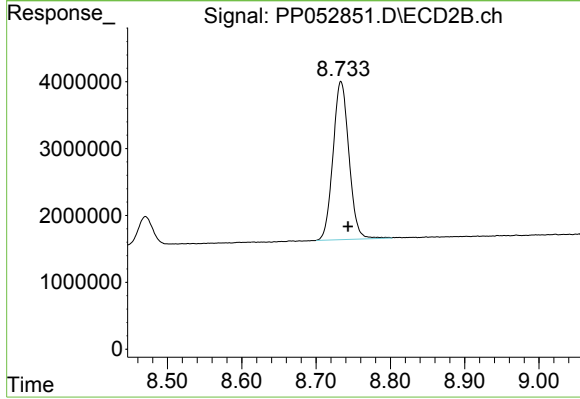
Instrument :
 ECD_P
 ClientSampleId :
 PB148614BSD



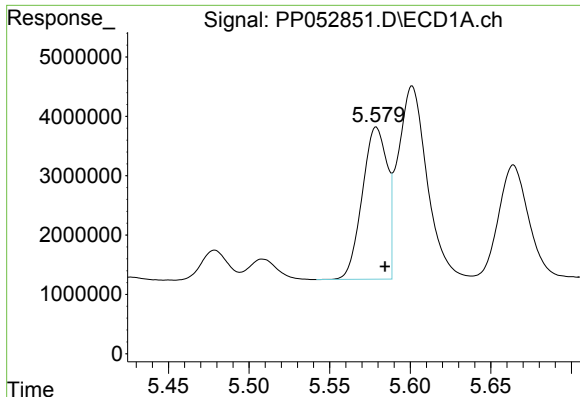
#1 Tetrachloro-m-xylene
 R.T.: 3.651 min
 Delta R.T.: -0.003 min
 Response: 35833656
 Conc: 19.07 ng/ml



#2 Decachlorobiphenyl
 R.T.: 10.209 min
 Delta R.T.: -0.015 min
 Response: 27100305
 Conc: 21.35 ng/ml



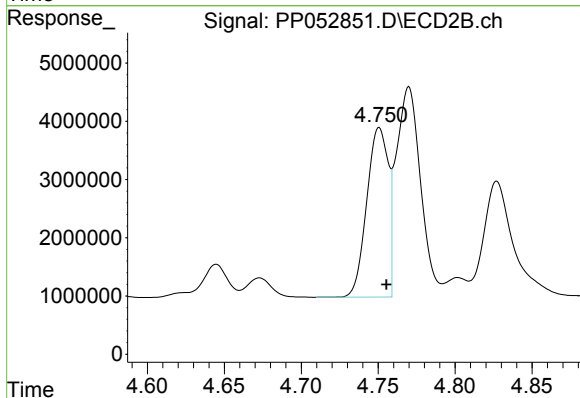
#2 Decachlorobiphenyl
 R.T.: 8.733 min
 Delta R.T.: -0.009 min
 Response: 35179578
 Conc: 20.98 ng/ml



#3 AR-1016-1

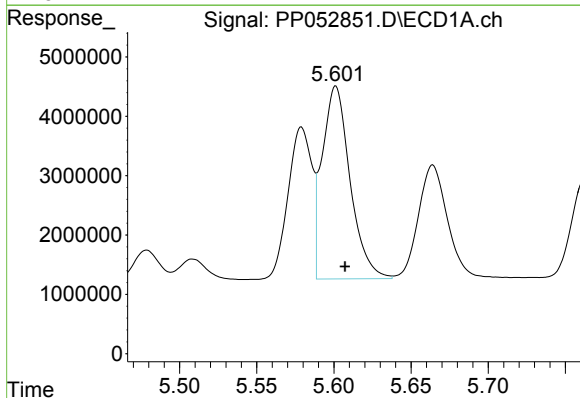
R.T.: 5.579 min
 Delta R.T.: -0.005 min
 Response: 27540487
 Conc: 410.78 ng/ml

Instrument :
 ECD_P
 ClientSampleId :
 PB148614BSD



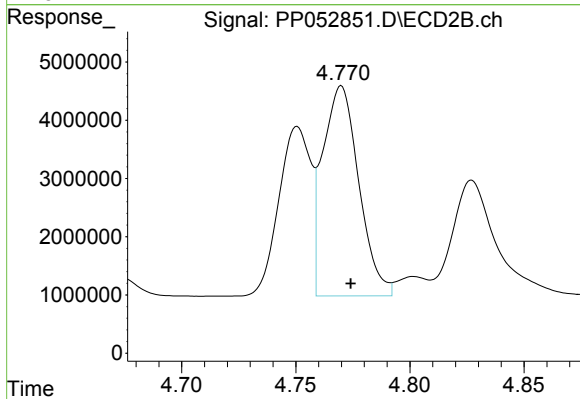
#3 AR-1016-1

R.T.: 4.751 min
 Delta R.T.: -0.005 min
 Response: 28355047
 Conc: 430.77 ng/ml



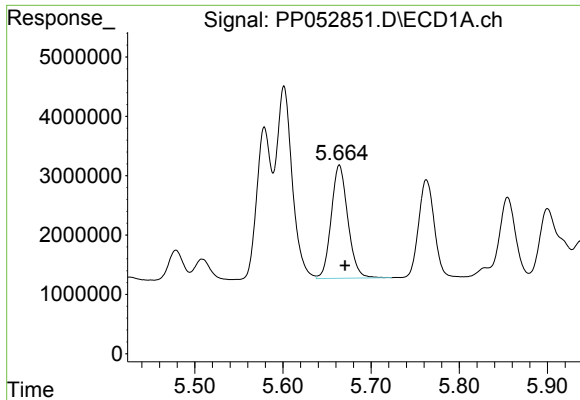
#4 AR-1016-2

R.T.: 5.601 min
 Delta R.T.: -0.006 min
 Response: 40957198
 Conc: 410.05 ng/ml



#4 AR-1016-2

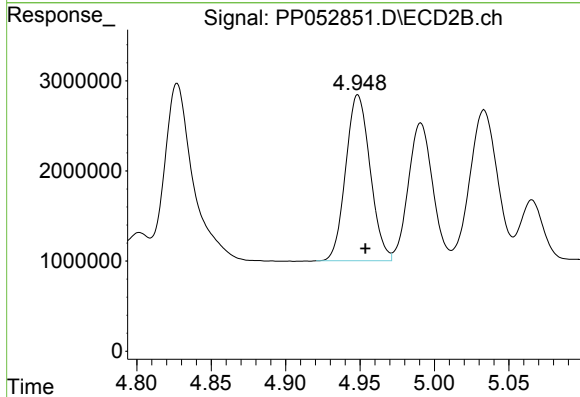
R.T.: 4.770 min
 Delta R.T.: -0.004 min
 Response: 39681546
 Conc: 432.24 ng/ml



#5 AR-1016-3

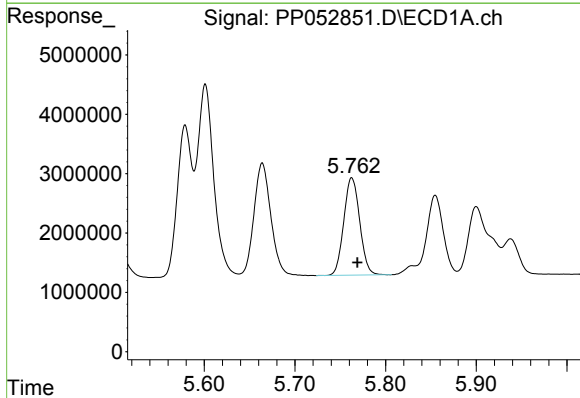
R.T.: 5.664 min
 Delta R.T.: -0.006 min
 Response: 24944707
 Conc: 409.87 ng/ml

Instrument :
 ECD_P
 ClientSampleId :
 PB148614BSD



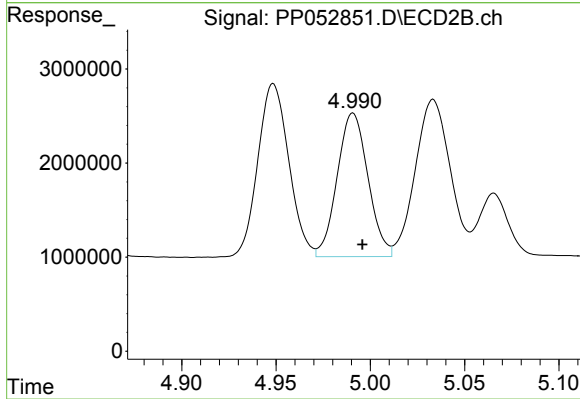
#5 AR-1016-3

R.T.: 4.949 min
 Delta R.T.: -0.005 min
 Response: 21013440
 Conc: 432.20 ng/ml



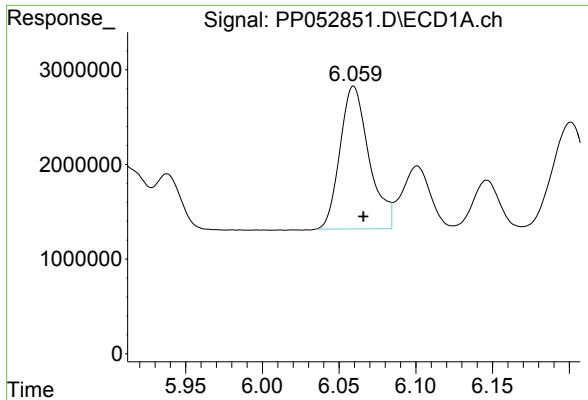
#6 AR-1016-4

R.T.: 5.763 min
 Delta R.T.: -0.006 min
 Response: 20078090
 Conc: 414.61 ng/ml



#6 AR-1016-4

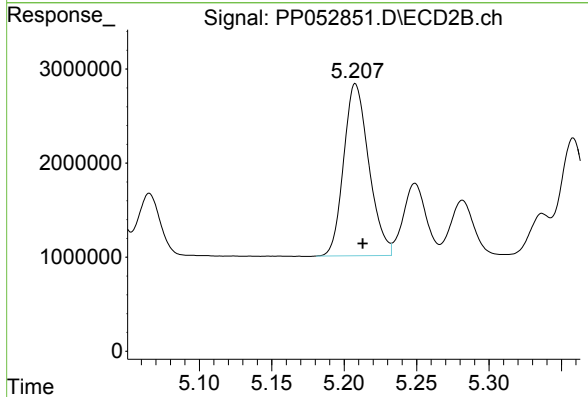
R.T.: 4.991 min
 Delta R.T.: -0.005 min
 Response: 17361302
 Conc: 445.62 ng/ml



#7 AR-1016-5

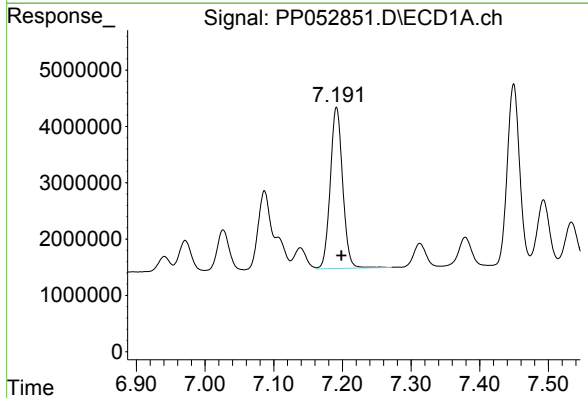
R.T.: 6.059 min
 Delta R.T.: -0.006 min
 Response: 19949894
 Conc: 414.20 ng/ml

Instrument :
 ECD_P
 ClientSampleId :
 PB148614BSD



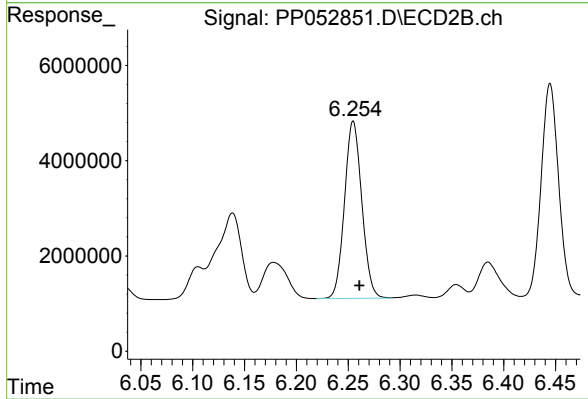
#7 AR-1016-5

R.T.: 5.208 min
 Delta R.T.: -0.005 min
 Response: 22123479
 Conc: 440.30 ng/ml



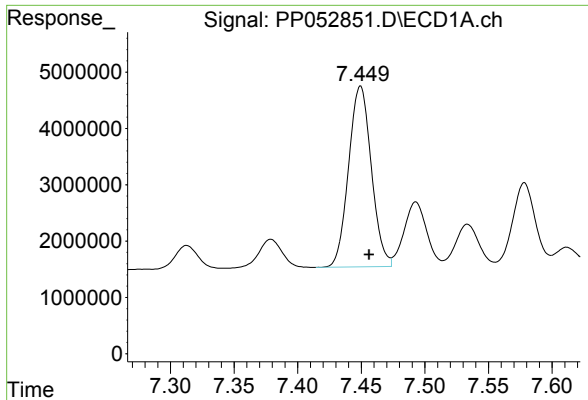
#31 AR-1260-1

R.T.: 7.191 min
 Delta R.T.: -0.007 min
 Response: 35972750
 Conc: 421.10 ng/ml



#31 AR-1260-1

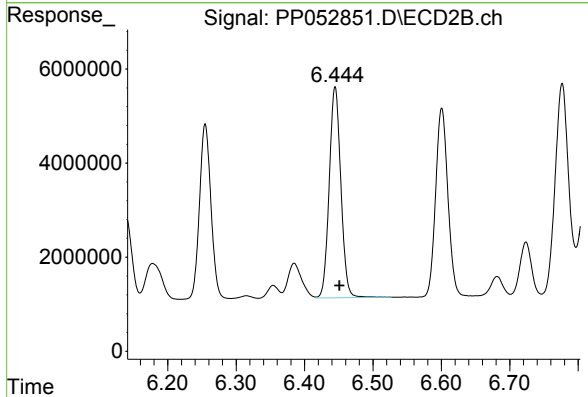
R.T.: 6.255 min
 Delta R.T.: -0.006 min
 Response: 43236136
 Conc: 425.08 ng/ml



#32 AR-1260-2

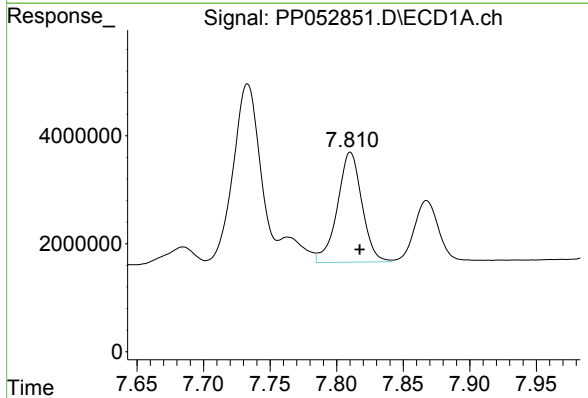
R.T.: 7.449 min
 Delta R.T.: -0.007 min
 Response: 39941581
 Conc: 427.73 ng/ml

Instrument :
 ECD_P
 ClientSampleId :
 PB148614BSD



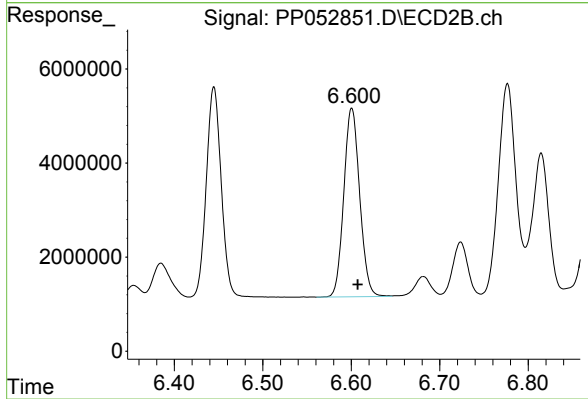
#32 AR-1260-2

R.T.: 6.445 min
 Delta R.T.: -0.006 min
 Response: 52915609
 Conc: 435.11 ng/ml



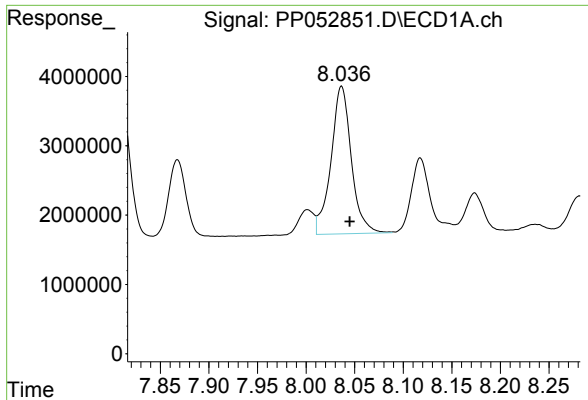
#33 AR-1260-3

R.T.: 7.810 min
 Delta R.T.: -0.007 min
 Response: 26112947
 Conc: 413.27 ng/ml



#33 AR-1260-3

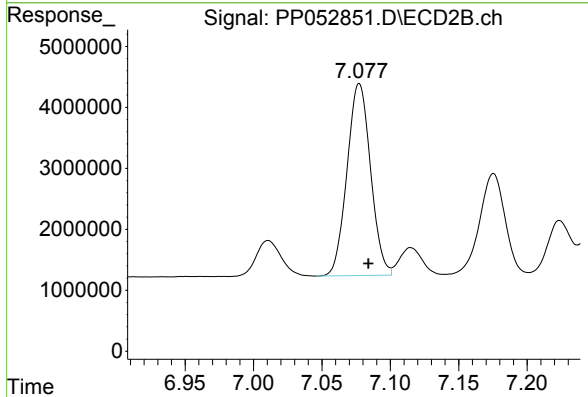
R.T.: 6.601 min
 Delta R.T.: -0.007 min
 Response: 50012501
 Conc: 428.75 ng/ml



#34 AR-1260-4

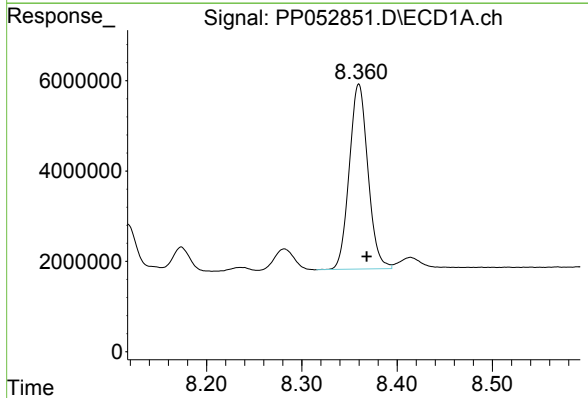
R.T.: 8.037 min
 Delta R.T.: -0.008 min
 Response: 31081549
 Conc: 434.09 ng/ml

Instrument :
 ECD_P
 ClientSampleId :
 PB148614BSD



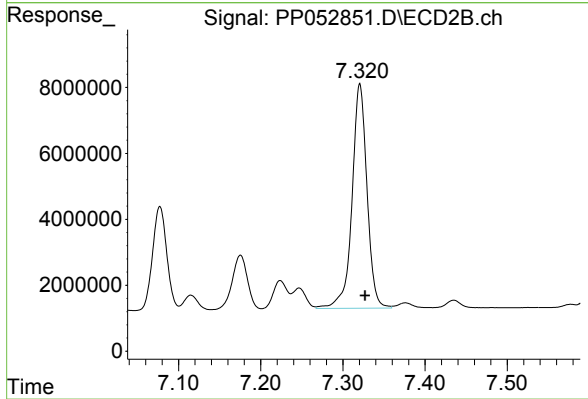
#34 AR-1260-4

R.T.: 7.077 min
 Delta R.T.: -0.006 min
 Response: 37716954
 Conc: 418.89 ng/ml



#35 AR-1260-5

R.T.: 8.360 min
 Delta R.T.: -0.008 min
 Response: 55731437
 Conc: 438.47 ng/ml



#35 AR-1260-5

R.T.: 7.321 min
 Delta R.T.: -0.006 min
 Response: 86261743
 Conc: 421.10 ng/ml