

Data Path : Z:\pestpcbsrv\HPCHEM1\ECD\_P\Data\PP103020\  
 Data File : PP030960.D  
 Signal(s) : Signal #1: ECD1A.CH Signal #2: ECD2B.CH  
 Acq On : 29 Oct 2020 12:16  
 Operator : DD\AJ  
 Sample : MDL-AR1248-W-12  
 Misc :  
 ALS Vial : 14 Sample Multiplier: 1

**Instrument :**  
 ECD\_P  
**ClientSampleId :**  
 MDL-AR1248-W-12

**Manual Integrations**  
**APPROVED**  
 Ankita  
 10/30/2020 3:52:35 PM

Integration File signal 1: autoint1.e  
 Integration File signal 2: autoint2.e  
 Quant Time: Oct 29 17:10:27 2020  
 Quant Method : Z:\pestpcbsrv\HPCHEM1\ECD\_O\methods\AR1248PP102920.M  
 Quant Title : GC EXTRACTABLES  
 QLast Update : Wed Oct 28 16:58:01 2020  
 Response via : Initial Calibration  
 Integrator: ChemStation 6890 Scale Mode: Small noise peaks clipped

Volume Inj. : 2 µl  
 Signal #1 Phase : ZB-MR2 Signal #2 Phase: ZB-MR2  
 Signal #1 Info : 30Mx0.32mmx 0.50µ Signal #2 Info : 30M x 0.32mm x 0.25µm

Compound	RT#1	RT#2	Resp#1	Resp#2	ng/ml	ng/ml
-----						
System Monitoring Compounds						
1) SA Tetrachlo...	4.802	4.081	1149177	1014343	19.275	18.806
2) SA Decachlor...	10.691	9.416	674547	710502	19.832m	19.502
Target Compounds						
21) L5 AR-1248-1	6.108	5.344	24821	19659	24.864	23.110
22) L5 AR-1248-2	6.403	5.609	31857	26649	25.431	23.057
23) L5 AR-1248-3	6.617	5.655	42096	25068	27.460	20.486 #
24) L5 AR-1248-4	7.044	5.839	42298	31553	26.431	21.415
25) L5 AR-1248-5	7.083	6.263	40703	30428	25.468	22.783
-----						

(f)=RT Delta > 1/2 Window (#)=Amounts differ by > 25% (m)=manual int.

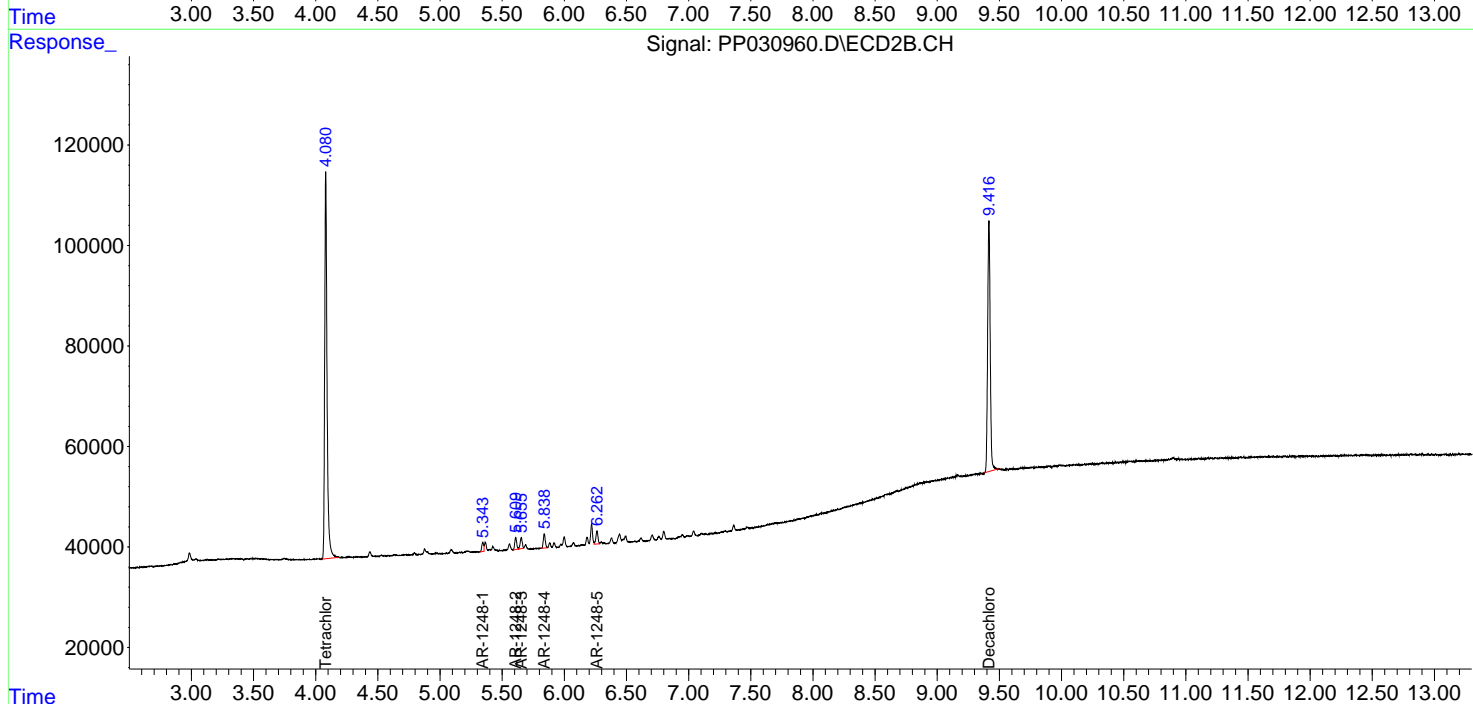
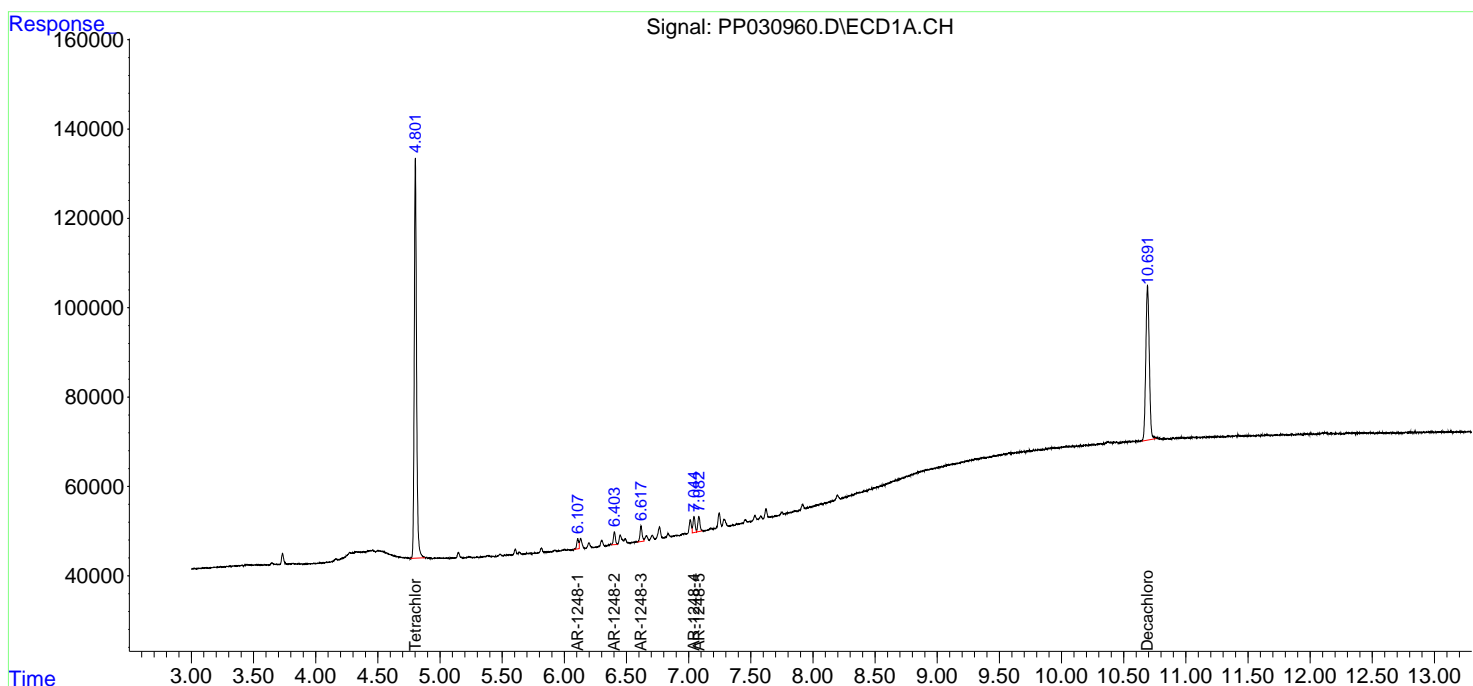
Data Path : Z:\pestpcbsrv\HPCHEM1\ECD\_P\Data\PP103020\  
 Data File : PP030960.D  
 Signal(s) : Signal #1: ECD1A.CH Signal #2: ECD2B.CH  
 Acq On : 29 Oct 2020 12:16  
 Operator : DD\AJ  
 Sample : MDL-AR1248-W-12  
 Misc :  
 ALS Vial : 14 Sample Multiplier: 1

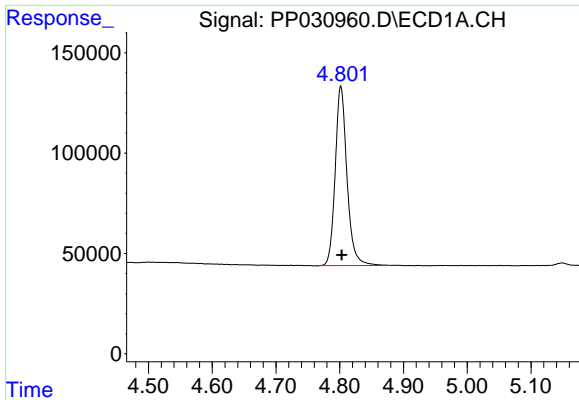
**Instrument :**  
 ECD\_P  
**Client Sampled :**  
 MDL-AR1248-W-12

**Manual Integrations**  
**APPROVED**  
 Ankita  
 10/30/2020 3:52:35 PM

Integration File signal 1: autoint1.e  
 Integration File signal 2: autoint2.e  
 Quant Time: Oct 29 17:10:27 2020  
 Quant Method : Z:\pestpcbsrv\HPCHEM1\ECD\_O\methods\AR1248PP102920.M  
 Quant Title : GC EXTRACTABLES  
 QLast Update : Wed Oct 28 16:58:01 2020  
 Response via : Initial Calibration  
 Integrator: ChemStation 6890 Scale Mode: Small noise peaks clipped

Volume Inj. : 2 µl  
 Signal #1 Phase : ZB-MR1 Signal #2 Phase: ZB-MR2  
 Signal #1 Info : 30Mx0.32mmx 0.50µ Signal #2 Info : 30M x 0.32mm x 0.25µm

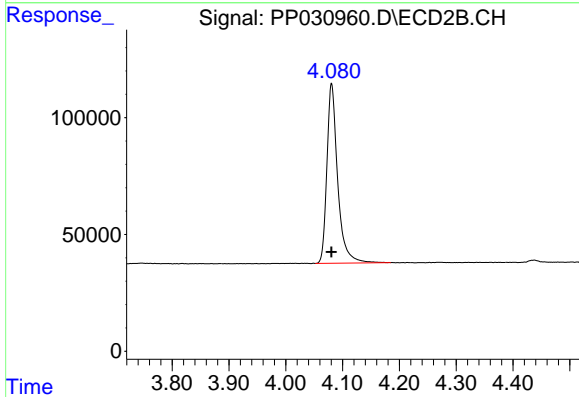




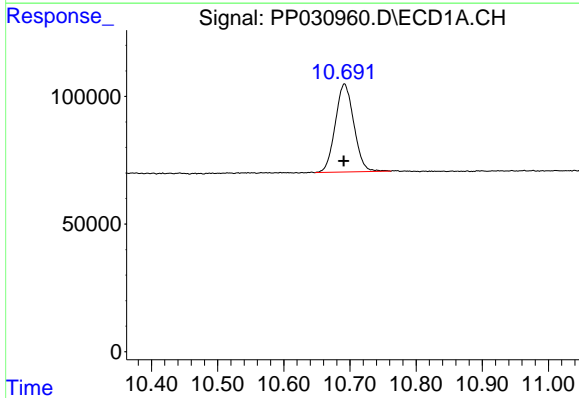
#1 Tetrachloro-m-xylene  
 R.T.: 4.802 min  
 Delta R.T.: -0.001 min  
 Response: 1149177  
 Conc: 19.28 ng/ml

**Instrument :**  
 ECD\_P  
**ClientSampled :**  
 MDL-AR1248-W-12

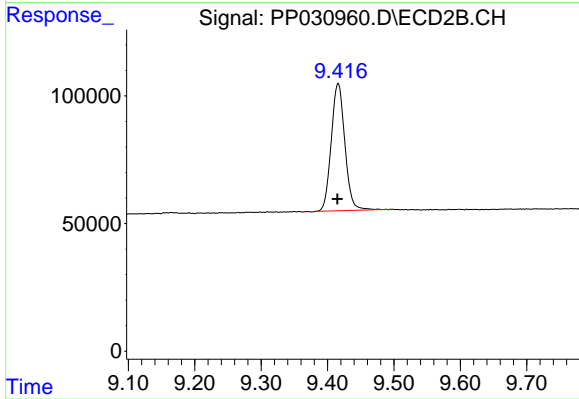
**Manual Integrations**  
**APPROVED**  
 Ankita  
 10/30/2020 3:52:35 PM



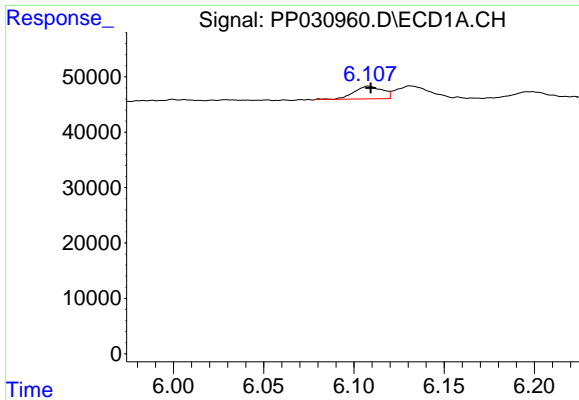
#1 Tetrachloro-m-xylene  
 R.T.: 4.081 min  
 Delta R.T.: 0.000 min  
 Response: 1014343  
 Conc: 18.81 ng/ml



#2 Decachlorobiphenyl  
 R.T.: 10.691 min  
 Delta R.T.: 0.000 min  
 Response: 674547  
 Conc: 19.83 ng/ml m



#2 Decachlorobiphenyl  
 R.T.: 9.416 min  
 Delta R.T.: 0.001 min  
 Response: 710502  
 Conc: 19.50 ng/ml

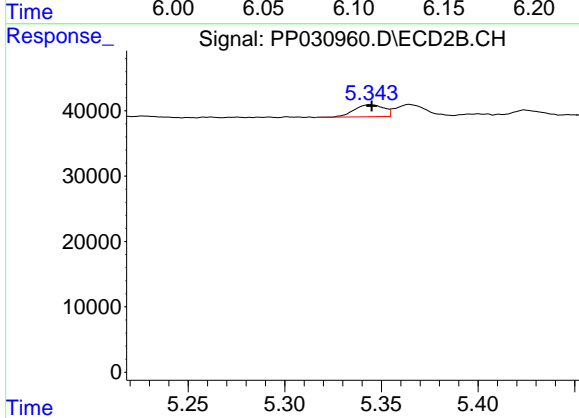


#21 AR-1248-1

R.T.: 6.108 min  
 Delta R.T.: -0.001 min  
 Response: 24821  
 Conc: 24.86 ng/ml

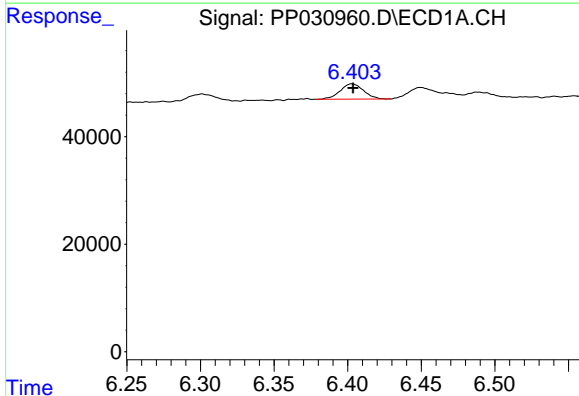
**Instrument :**  
 ECD\_P  
**ClientSampleId :**  
 MDL-AR1248-W-12

**Manual Integrations**  
**APPROVED**  
 Ankita  
 10/30/2020 3:52:35 PM



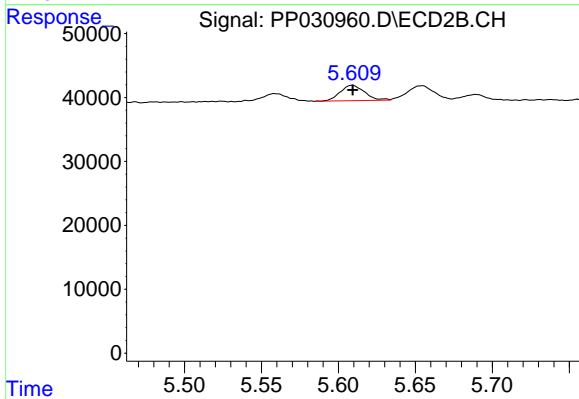
#21 AR-1248-1

R.T.: 5.344 min  
 Delta R.T.: 0.000 min  
 Response: 19659  
 Conc: 23.11 ng/ml



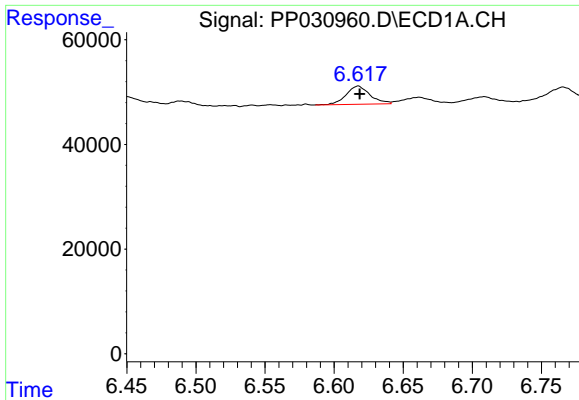
#22 AR-1248-2

R.T.: 6.403 min  
 Delta R.T.: 0.000 min  
 Response: 31857  
 Conc: 25.43 ng/ml



#22 AR-1248-2

R.T.: 5.609 min  
 Delta R.T.: 0.000 min  
 Response: 26649  
 Conc: 23.06 ng/ml

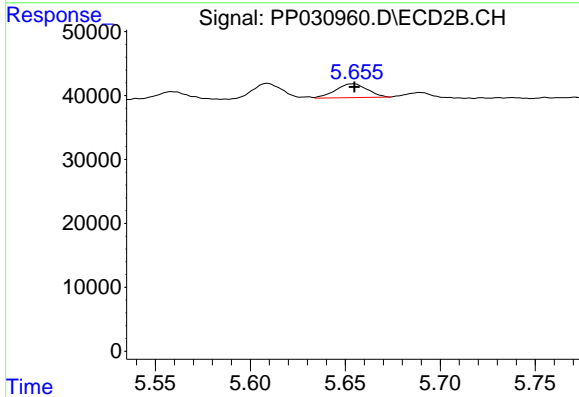


#23 AR-1248-3

R.T.: 6.617 min  
 Delta R.T.: 0.000 min  
 Response: 42096  
 Conc: 27.46 ng/ml

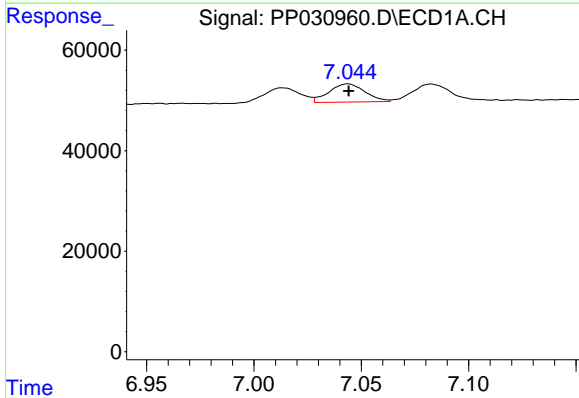
**Instrument :**  
 ECD\_P  
**ClientSampled :**  
 MDL-AR1248-W-12

**Manual Integrations**  
**APPROVED**  
 Ankita  
 10/30/2020 3:52:35 PM



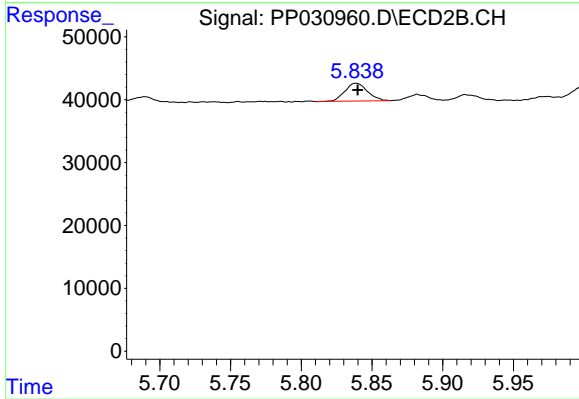
#23 AR-1248-3

R.T.: 5.655 min  
 Delta R.T.: 0.000 min  
 Response: 25068  
 Conc: 20.49 ng/ml



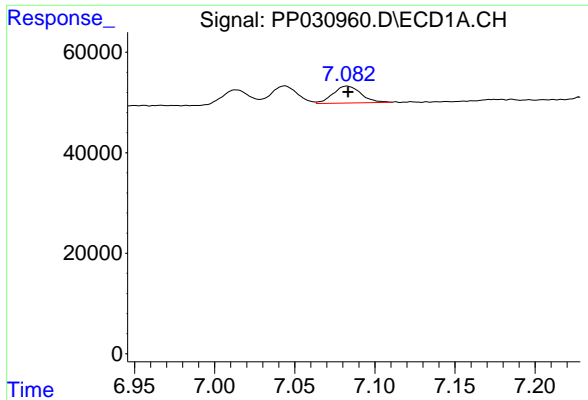
#24 AR-1248-4

R.T.: 7.044 min  
 Delta R.T.: 0.000 min  
 Response: 42298  
 Conc: 26.43 ng/ml



#24 AR-1248-4

R.T.: 5.839 min  
 Delta R.T.: -0.001 min  
 Response: 31553  
 Conc: 21.42 ng/ml

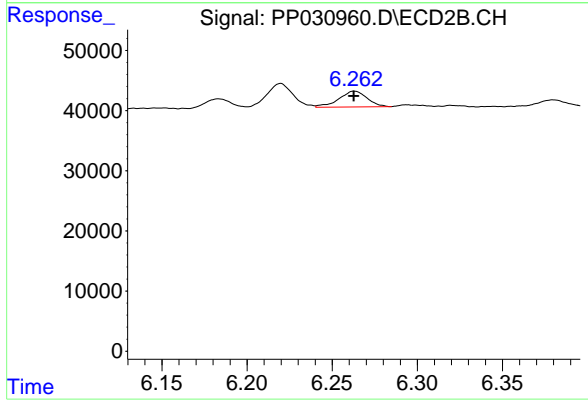


#25 AR-1248-5

R.T.: 7.083 min  
Delta R.T.: 0.000 min  
Response: 40703  
Conc: 25.47 ng/ml

**Instrument :**  
ECD\_P  
**ClientSampleId :**  
MDL-AR1248-W-12

**Manual Integrations**  
**APPROVED**  
Ankita  
10/30/2020 3:52:35 PM



#25 AR-1248-5

R.T.: 6.263 min  
Delta R.T.: 0.000 min  
Response: 30428  
Conc: 22.78 ng/ml