

Data Path : Z:\pestpcbsrv\HPCHEM1\ECD\_L\Data\PL110123\  
 Data File : PL086374.D  
 Signal(s) : Signal #1: ECD1A.ch Signal #2: ECD2B.ch  
 Acq On : 01 Nov 2023 09:03  
 Operator : AR\AJ  
 Sample : PSTDICC075  
 Misc :  
 ALS Vial : 6 Sample Multiplier: 1

Instrument :  
 ECD\_P  
 ClientSampleId :

Integration File signal 1: autoint1.e  
 Integration File signal 2: autoint2.e  
 Quant Time: Nov 01 12:23:07 2023  
 Quant Method : Z:\pestpcbsrv\HPCHEM1\ECD\_L\methods\PL110123.M  
 Quant Title : GC Extractables  
 QLast Update : Wed Nov 01 12:17:23 2023  
 Response via : Initial Calibration  
 Integrator: ChemStation

Volume Inj. : 1 µl  
 Signal #1 Phase : ZB-MR2 Signal #2 Phase: ZB-MR1  
 Signal #1 Info : 30M x 0.32mm x0.2 Signal #2 Info : 30M x 0.32mm x0.5µm

Compound	RT#1	RT#2	Resp#1	Resp#2	ng/ml	ng/ml
-----						
System Monitoring Compounds						
1) SA Tetrachlo...	3.353	2.618	235.4E6	70742916	74.063	73.715
28) SA Decachlor...	8.855	7.770	186.7E6	80181876	73.598	73.685
Target Compounds						
2) A alpha-BHC	3.807	3.117	363.0E6	103.0E6	74.103	74.046
3) MA gamma-BHC...	4.138	3.444	349.2E6	101.9E6	74.113	73.933
4) MA Heptachlor	4.726	3.780	332.5E6	98473532	73.760	74.143
5) MB Aldrin	5.065	4.056	336.1E6	98726121	74.032	74.060
6) B beta-BHC	4.342	3.746	138.3E6	41569526	73.877	73.743
7) B delta-BHC	4.585	3.971	335.3E6	100.1E6	73.850	74.137
8) B Heptachlo...	5.495	4.562	291.1E6	89666699	74.050	73.876
9) A Endosulfan I	5.880	4.929	270.9E6	86397322	73.940	74.230
10) B gamma-Chl...	5.753	4.814	294.3E6	90904164	73.871	74.031
11) B alpha-Chl...	5.832	4.877	293.9E6	92676095	73.924	73.975
12) B 4,4'-DDE	6.016	5.076	240.5E6	77484401	73.677	73.851
13) MA Dieldrin	6.156	5.195	289.2E6	92063410	73.859	73.987
14) MA Endrin	6.385	5.468	253.6E6	84412655	73.727	73.847
15) B Endosulfa...	6.608	5.767	236.6E6	81306445	73.967	74.073
16) A 4,4'-DDD	6.535	5.632	178.2E6	63031132	73.619	73.744
17) MA 4,4'-DDT	6.850	5.883	196.2E6	73066734	73.786	73.903
18) B Endrin al...	6.739	5.948	172.8E6	60555686	73.431	73.350
19) B Endosulfa...	6.975	6.172	221.8E6	77856508	73.779	73.782
20) A Methoxychlor	7.336	6.467	102.7E6	42342343	73.506	73.730
21) B Endrin ke...	7.457	6.674	239.1E6	94218351	73.858	73.935
22) Mirex	7.930	6.851	190.3E6	79781834	73.691	73.662
23) Chlordane-1	0.000	3.601	0	16466	N.D.	750.000 #
24) Chlordane-2	5.065	4.198	336.1E6	147509	750.000	750.000
25) Chlordane-3	5.753	4.814	294.3E6	90904164	750.000	750.000
26) Chlordane-4	5.832	4.877	293.9E6	92676095	750.000	750.000

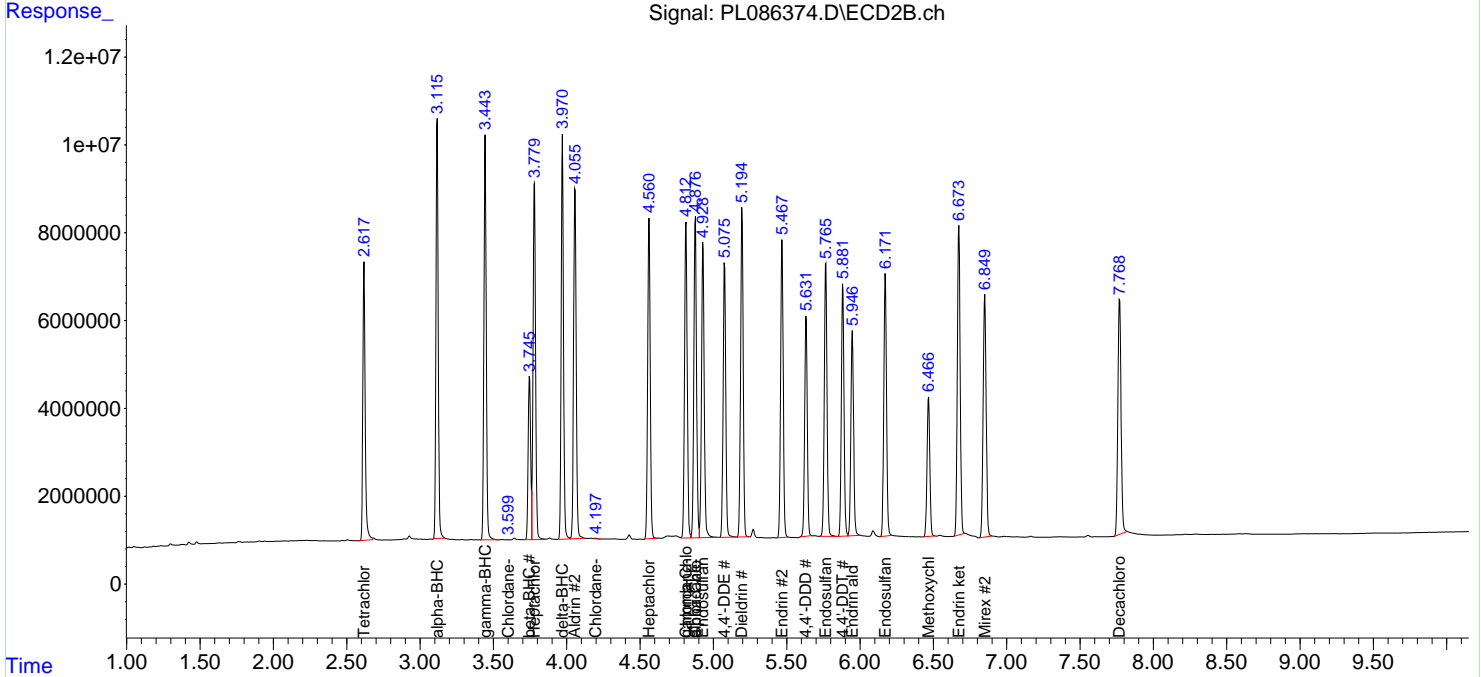
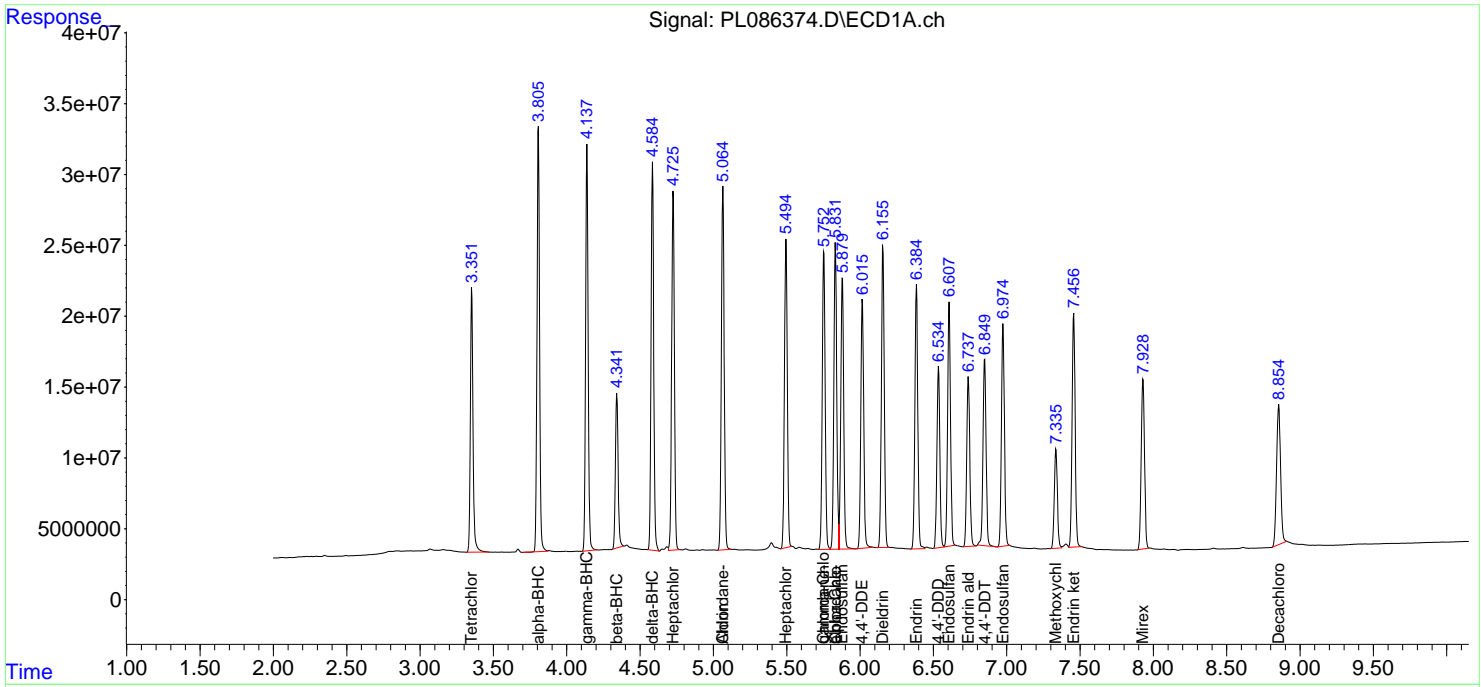
(f)=RT Delta > 1/2 Window (#)=Amounts differ by > 25% (m)=manual int.

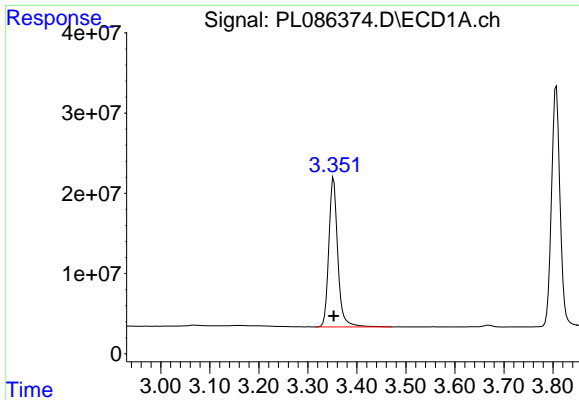
Data Path : Z:\pestpcbsrv\HPCHEM1\ECD\_L\Data\PL110123\  
 Data File : PL086374.D  
 Signal(s) : Signal #1: ECD1A.ch Signal #2: ECD2B.ch  
 Acq On : 01 Nov 2023 09:03  
 Operator : AR\AJ  
 Sample : PSTDICC075  
 Misc :  
 ALS Vial : 6 Sample Multiplier: 1

Instrument :  
 ECD\_P  
 ClientSampleId :

Integration File signal 1: autoint1.e  
 Integration File signal 2: autoint2.e  
 Quant Time: Nov 01 12:23:07 2023  
 Quant Method : Z:\pestpcbsrv\HPCHEM1\ECD\_L\methods\PL110123.M  
 Quant Title : GC Extractables  
 QLast Update : Wed Nov 01 12:17:23 2023  
 Response via : Initial Calibration  
 Integrator: ChemStation

Volume Inj. : 1 µl  
 Signal #1 Phase : ZB-MR2 Signal #2 Phase: ZB-MR1  
 Signal #1 Info : 30M x 0.32mm x0.2 Signal #2 Info : 30M x 0.32mm x0.5µm

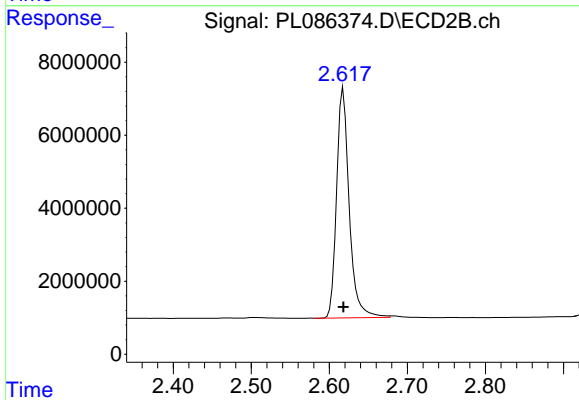




#1 Tetrachloro-m-xylene

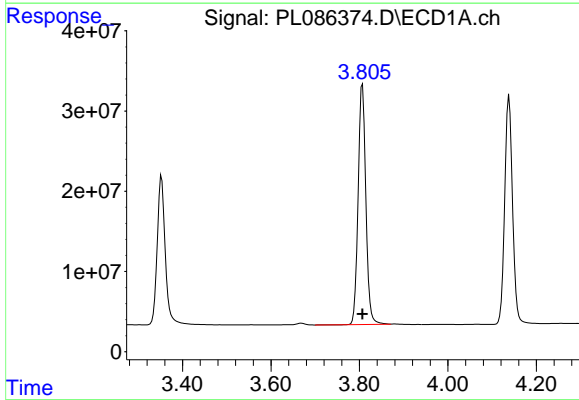
R.T.: 3.353 min  
 Delta R.T.: 0.000 min  
 Response: 235352670  
 Conc: 74.06 ng/ml

Instrument :  
 ECD\_P  
 ClientSampleId :



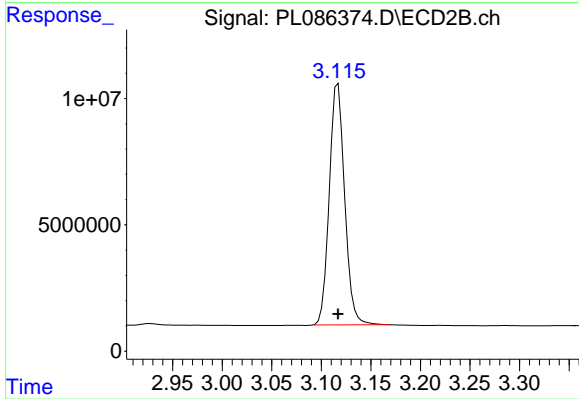
#1 Tetrachloro-m-xylene

R.T.: 2.618 min  
 Delta R.T.: 0.000 min  
 Response: 70742916  
 Conc: 73.71 ng/ml



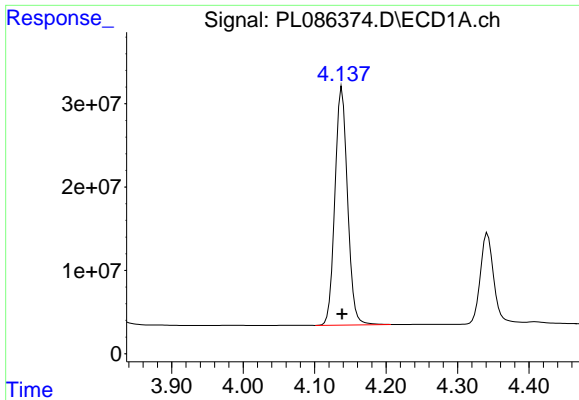
#2 alpha-BHC

R.T.: 3.807 min  
 Delta R.T.: 0.000 min  
 Response: 363049163  
 Conc: 74.10 ng/ml



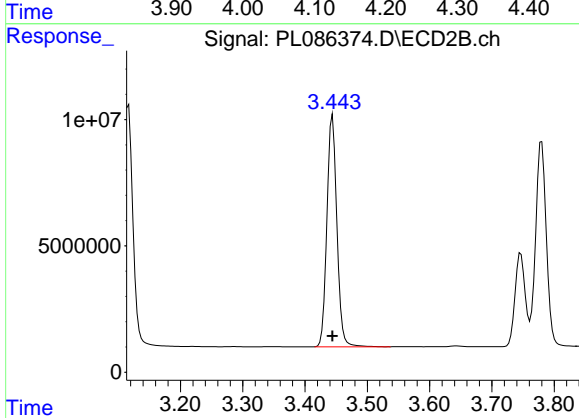
#2 alpha-BHC

R.T.: 3.117 min  
 Delta R.T.: 0.000 min  
 Response: 103043627  
 Conc: 74.05 ng/ml

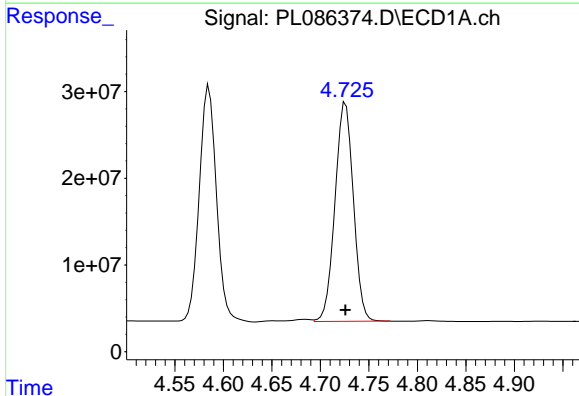


#3 gamma-BHC (Lindane)  
 R.T.: 4.138 min  
 Delta R.T.: 0.000 min  
 Response: 349182029  
 Conc: 74.11 ng/ml

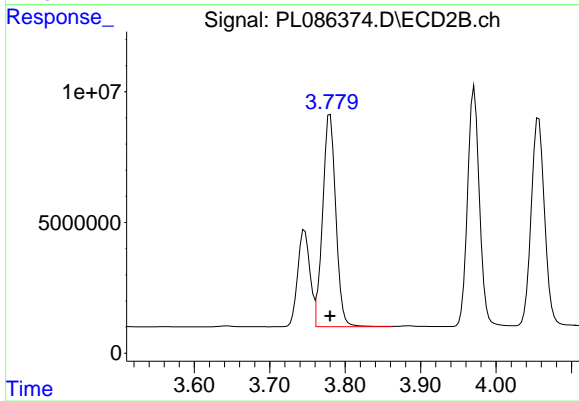
Instrument :  
 ECD\_P  
 ClientSampleId :



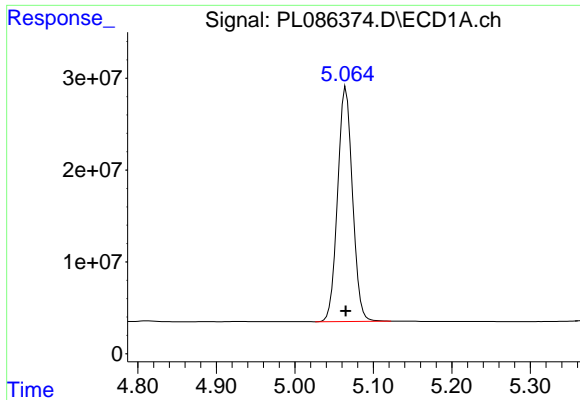
#3 gamma-BHC (Lindane)  
 R.T.: 3.444 min  
 Delta R.T.: 0.000 min  
 Response: 101894222  
 Conc: 73.93 ng/ml



#4 Heptachlor  
 R.T.: 4.726 min  
 Delta R.T.: 0.000 min  
 Response: 332467408  
 Conc: 73.76 ng/ml



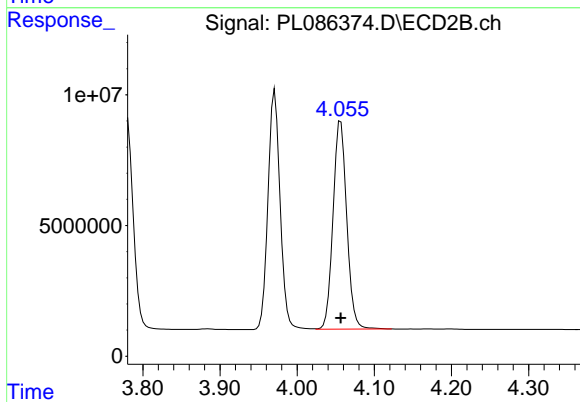
#4 Heptachlor  
 R.T.: 3.780 min  
 Delta R.T.: 0.000 min  
 Response: 98473532  
 Conc: 74.14 ng/ml



#5 Aldrin

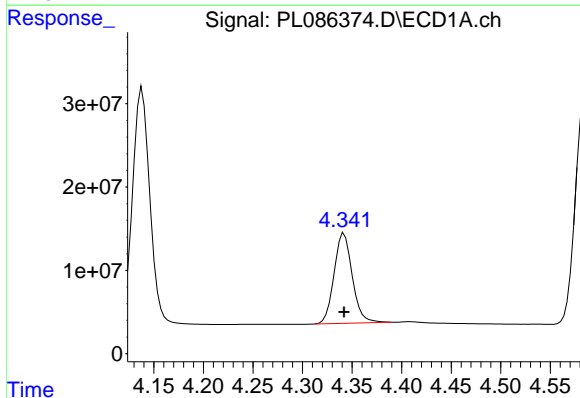
R.T.: 5.065 min  
 Delta R.T.: 0.000 min  
 Response: 336136217  
 Conc: 74.03 ng/ml

Instrument :  
 ECD\_P  
 ClientSampleId :



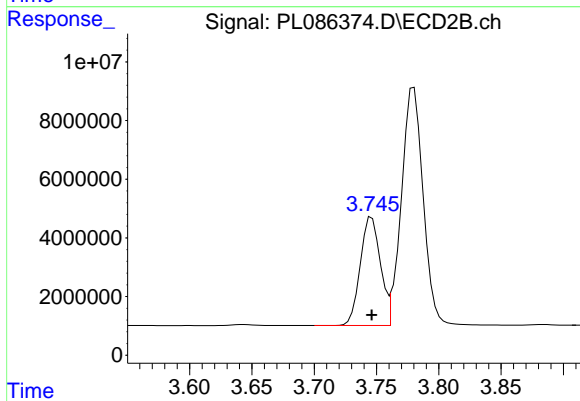
#5 Aldrin

R.T.: 4.056 min  
 Delta R.T.: 0.000 min  
 Response: 98726121  
 Conc: 74.06 ng/ml



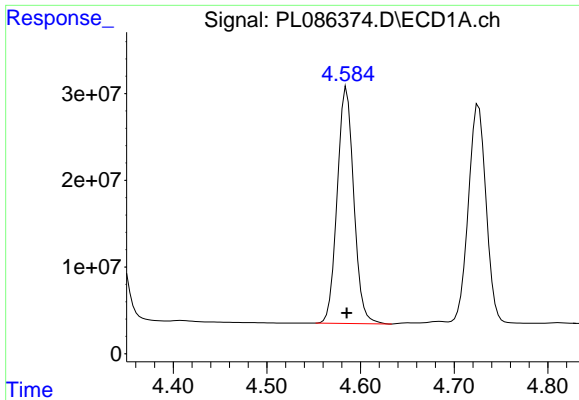
#6 beta-BHC

R.T.: 4.342 min  
 Delta R.T.: 0.000 min  
 Response: 138279454  
 Conc: 73.88 ng/ml



#6 beta-BHC

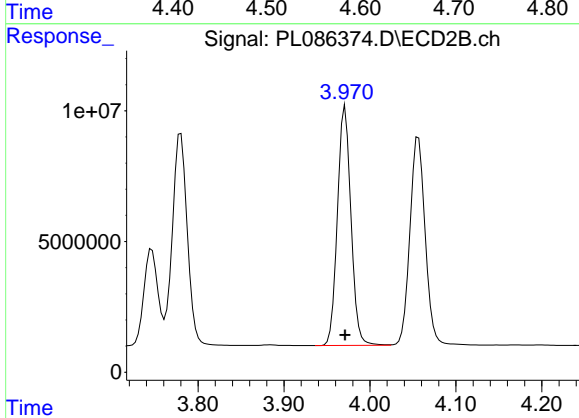
R.T.: 3.746 min  
 Delta R.T.: 0.000 min  
 Response: 41569526  
 Conc: 73.74 ng/ml



#7 delta-BHC

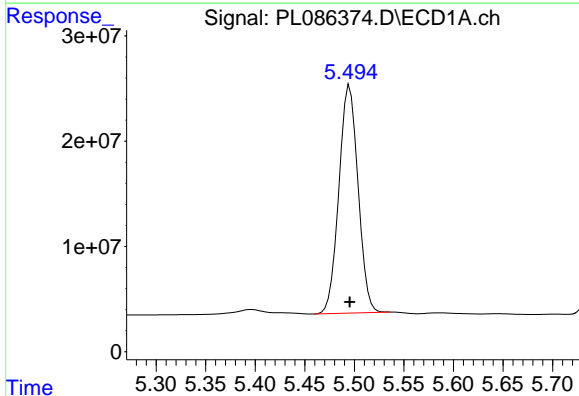
R.T.: 4.585 min  
 Delta R.T.: 0.000 min  
 Response: 335258652  
 Conc: 73.85 ng/ml

Instrument :  
 ECD\_P  
 ClientSampleId :



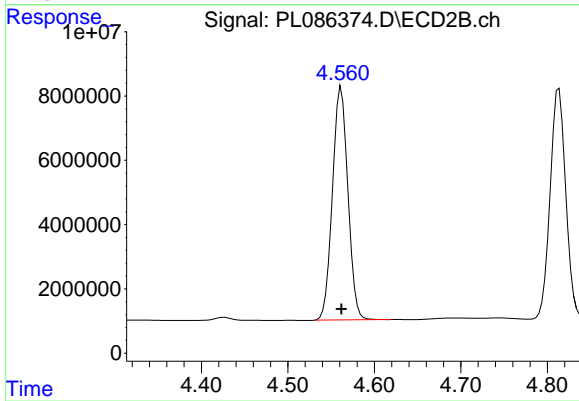
#7 delta-BHC

R.T.: 3.971 min  
 Delta R.T.: 0.000 min  
 Response: 100115065  
 Conc: 74.14 ng/ml



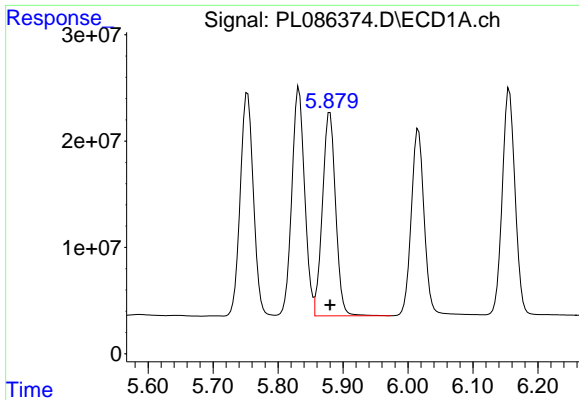
#8 Heptachlor epoxide

R.T.: 5.495 min  
 Delta R.T.: 0.000 min  
 Response: 291100912  
 Conc: 74.05 ng/ml



#8 Heptachlor epoxide

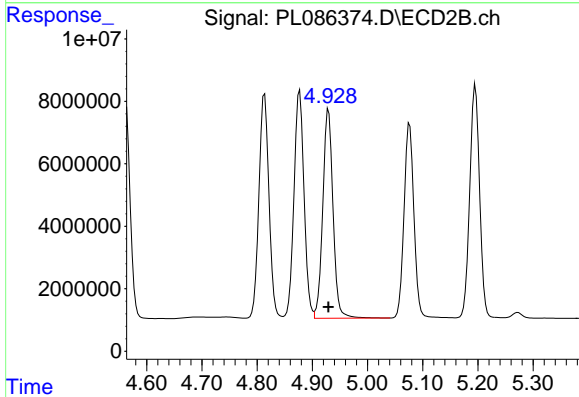
R.T.: 4.562 min  
 Delta R.T.: 0.000 min  
 Response: 89666699  
 Conc: 73.88 ng/ml



#9 Endosulfan I

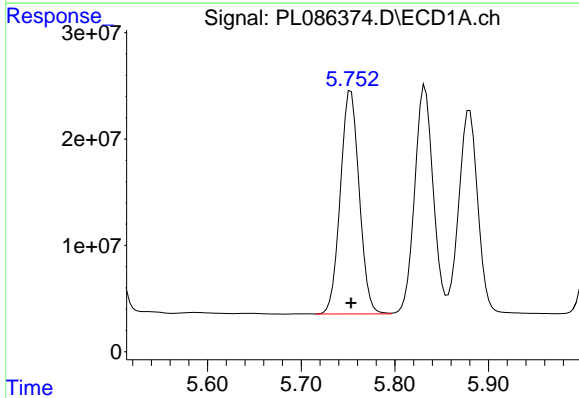
R.T.: 5.880 min  
 Delta R.T.: 0.000 min  
 Response: 270890014  
 Conc: 73.94 ng/ml

Instrument :  
 ECD\_P  
 ClientSampleId :



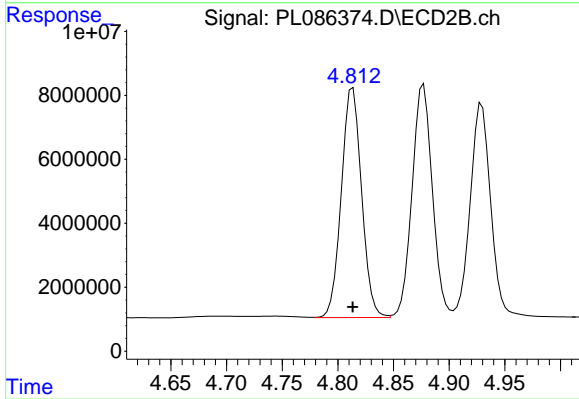
#9 Endosulfan I

R.T.: 4.929 min  
 Delta R.T.: 0.000 min  
 Response: 86397322  
 Conc: 74.23 ng/ml



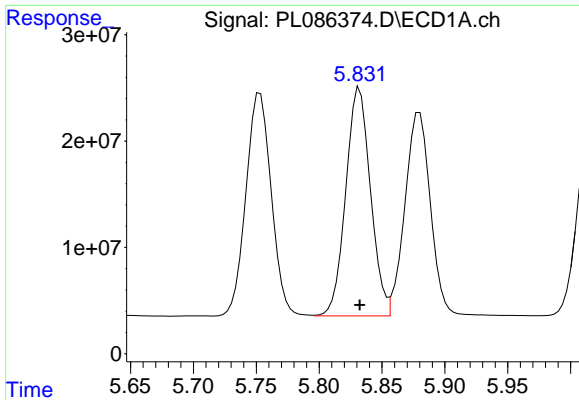
#10 gamma-Chlordane

R.T.: 5.753 min  
 Delta R.T.: 0.000 min  
 Response: 294329738  
 Conc: 73.87 ng/ml



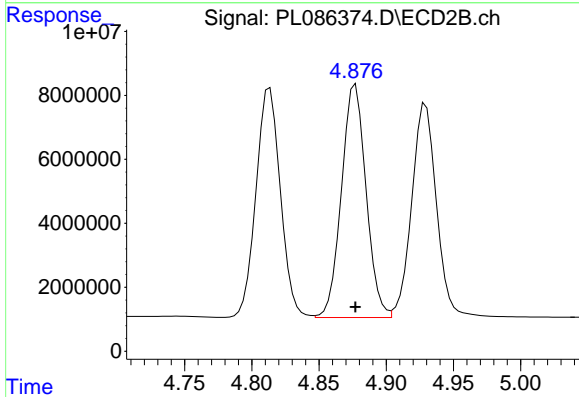
#10 gamma-Chlordane

R.T.: 4.814 min  
 Delta R.T.: 0.000 min  
 Response: 90904164  
 Conc: 74.03 ng/ml

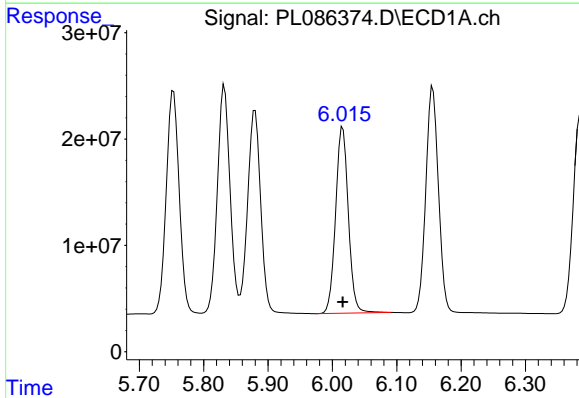


#11 alpha-Chlordane  
 R.T.: 5.832 min  
 Delta R.T.: 0.000 min  
 Response: 293863926  
 Conc: 73.92 ng/ml

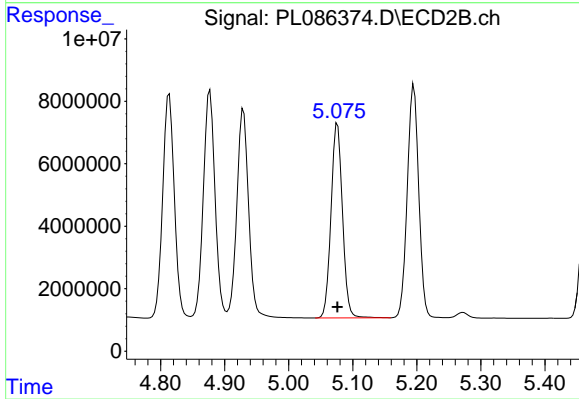
Instrument :  
 ECD\_P  
 ClientSampleId :



#11 alpha-Chlordane  
 R.T.: 4.877 min  
 Delta R.T.: 0.000 min  
 Response: 92676095  
 Conc: 73.98 ng/ml

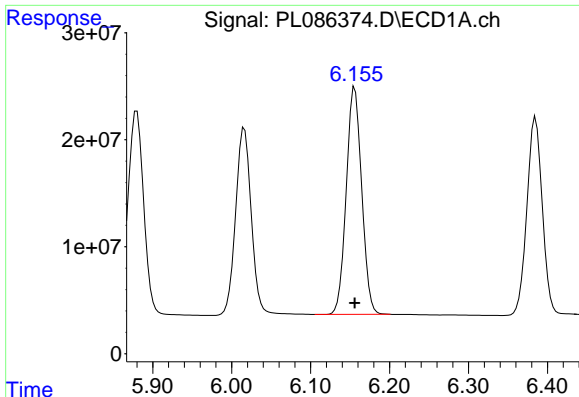


#12 4,4'-DDE  
 R.T.: 6.016 min  
 Delta R.T.: 0.000 min  
 Response: 240461710  
 Conc: 73.68 ng/ml



#12 4,4'-DDE  
 R.T.: 5.076 min  
 Delta R.T.: 0.000 min  
 Response: 77484401  
 Conc: 73.85 ng/ml

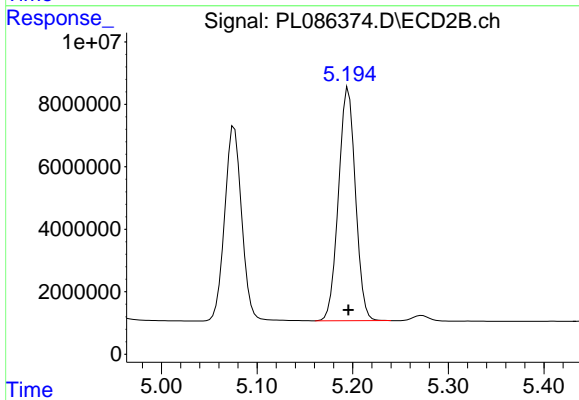




#13 Dieldrin

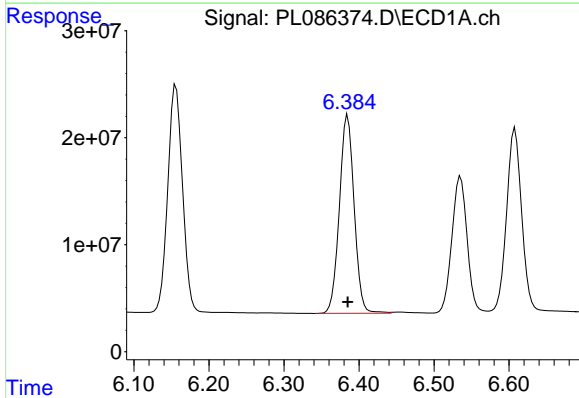
R.T.: 6.156 min  
 Delta R.T.: 0.000 min  
 Response: 289156838  
 Conc: 73.86 ng/ml

Instrument :  
 ECD\_P  
 ClientSampleId :



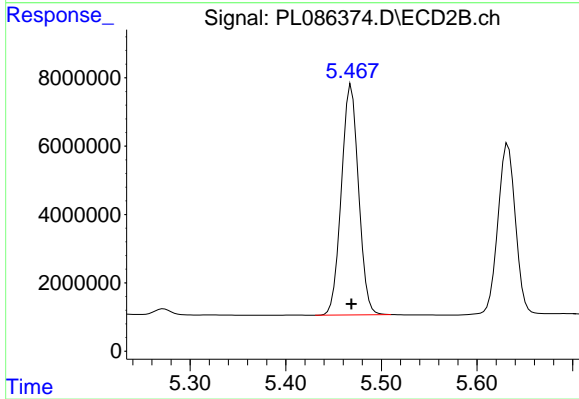
#13 Dieldrin

R.T.: 5.195 min  
 Delta R.T.: 0.000 min  
 Response: 92063410  
 Conc: 73.99 ng/ml



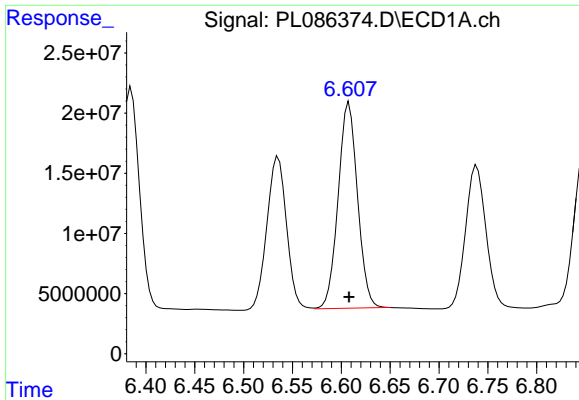
#14 Endrin

R.T.: 6.385 min  
 Delta R.T.: 0.000 min  
 Response: 253638060  
 Conc: 73.73 ng/ml



#14 Endrin

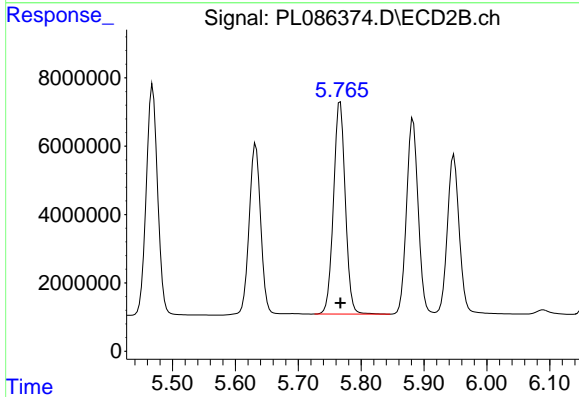
R.T.: 5.468 min  
 Delta R.T.: 0.000 min  
 Response: 84412655  
 Conc: 73.85 ng/ml



#15 Endosulfan II

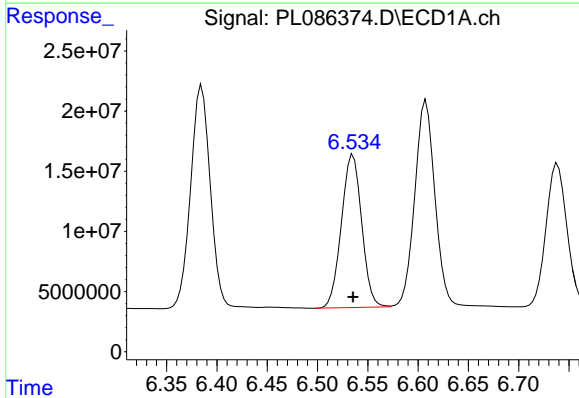
R.T.: 6.608 min  
 Delta R.T.: 0.000 min  
 Response: 236635839  
 Conc: 73.97 ng/ml

Instrument :  
 ECD\_P  
 ClientSampleId :



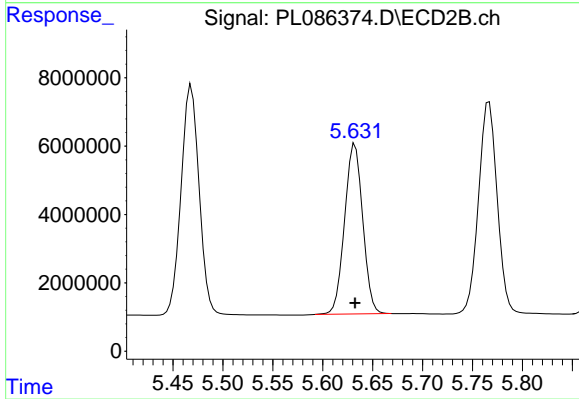
#15 Endosulfan II

R.T.: 5.767 min  
 Delta R.T.: 0.000 min  
 Response: 81306445  
 Conc: 74.07 ng/ml



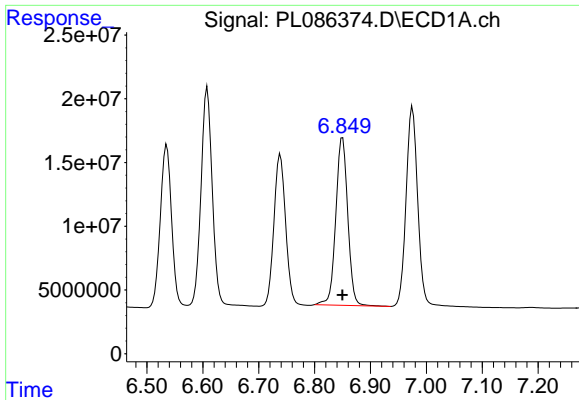
#16 4,4'-DDD

R.T.: 6.535 min  
 Delta R.T.: 0.000 min  
 Response: 178193395  
 Conc: 73.62 ng/ml



#16 4,4'-DDD

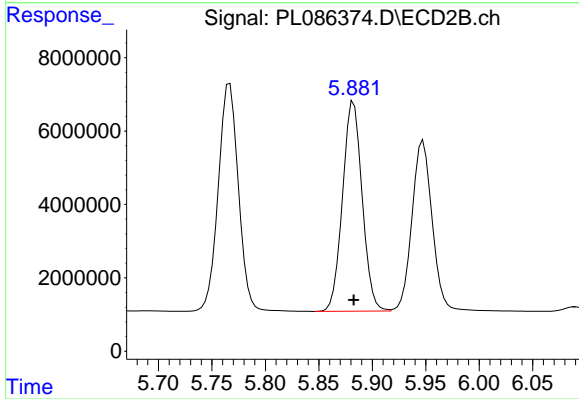
R.T.: 5.632 min  
 Delta R.T.: 0.000 min  
 Response: 63031132  
 Conc: 73.74 ng/ml



#17 4,4'-DDT

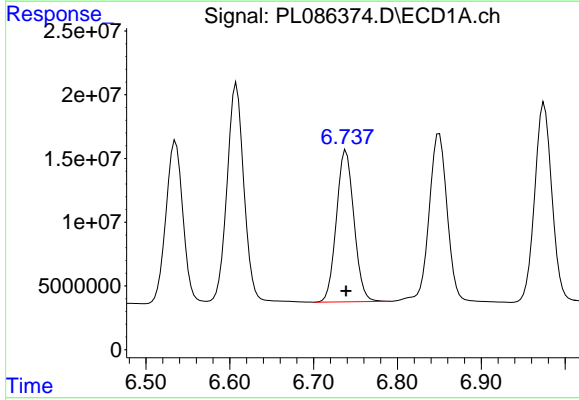
R.T.: 6.850 min  
 Delta R.T.: 0.000 min  
 Response: 196178058  
 Conc: 73.79 ng/ml

Instrument :  
 ECD\_P  
 ClientSampleId :



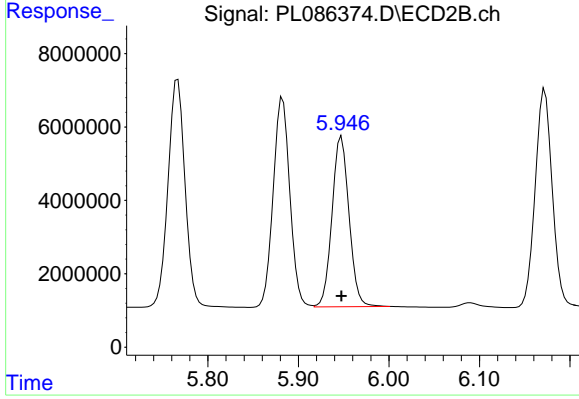
#17 4,4'-DDT

R.T.: 5.883 min  
 Delta R.T.: 0.000 min  
 Response: 73066734  
 Conc: 73.90 ng/ml



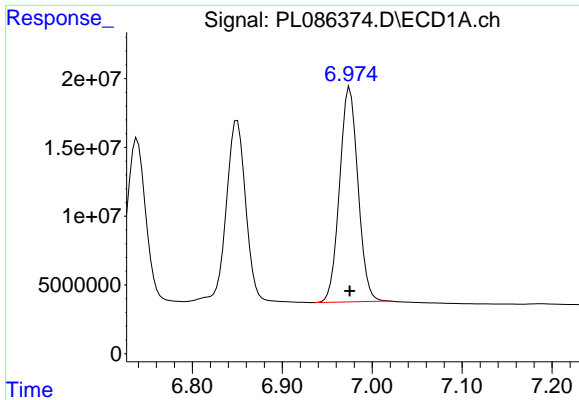
#18 Endrin aldehyde

R.T.: 6.739 min  
 Delta R.T.: 0.000 min  
 Response: 172787916  
 Conc: 73.43 ng/ml



#18 Endrin aldehyde

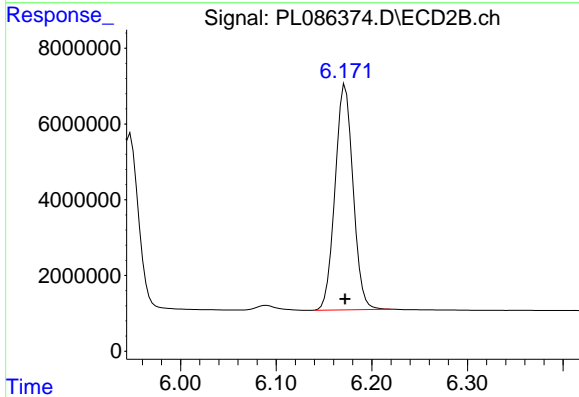
R.T.: 5.948 min  
 Delta R.T.: 0.000 min  
 Response: 60555686  
 Conc: 73.35 ng/ml



#19 Endosulfan Sulfate

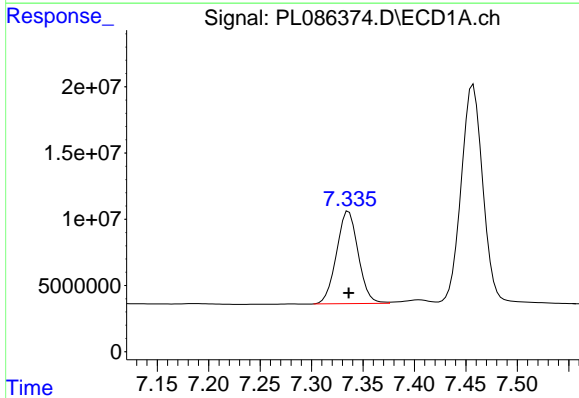
R.T.: 6.975 min  
 Delta R.T.: 0.000 min  
 Response: 221843455  
 Conc: 73.78 ng/ml

Instrument :  
 ECD\_P  
 ClientSampleId :



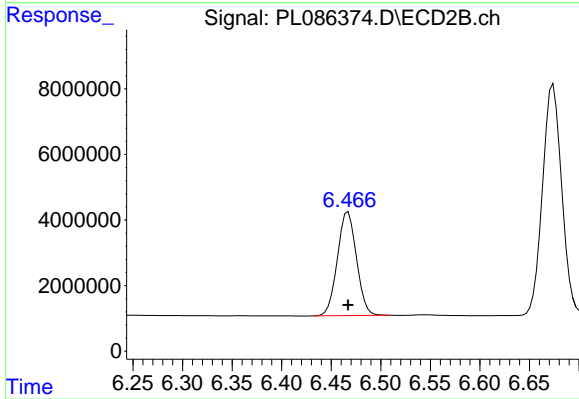
#19 Endosulfan Sulfate

R.T.: 6.172 min  
 Delta R.T.: 0.000 min  
 Response: 77856508  
 Conc: 73.78 ng/ml



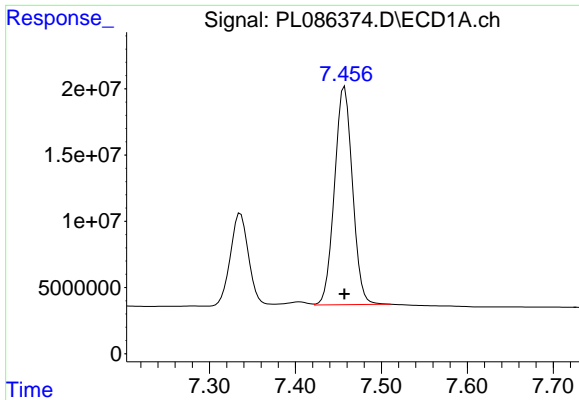
#20 Methoxychlor

R.T.: 7.336 min  
 Delta R.T.: 0.000 min  
 Response: 102701265  
 Conc: 73.51 ng/ml



#20 Methoxychlor

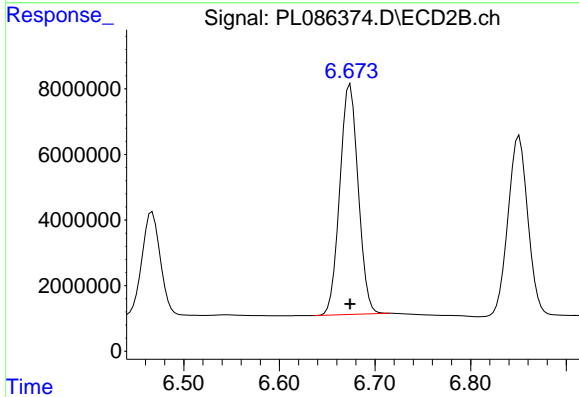
R.T.: 6.467 min  
 Delta R.T.: 0.000 min  
 Response: 42342343  
 Conc: 73.73 ng/ml



#21 Endrin ketone

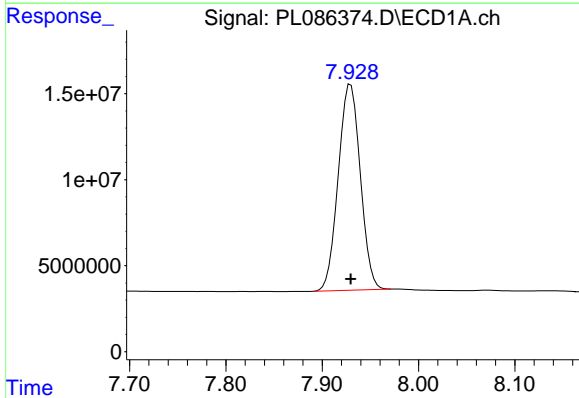
R.T.: 7.457 min  
 Delta R.T.: 0.000 min  
 Response: 239110460  
 Conc: 73.86 ng/ml

Instrument :  
 ECD\_P  
 ClientSampleId :



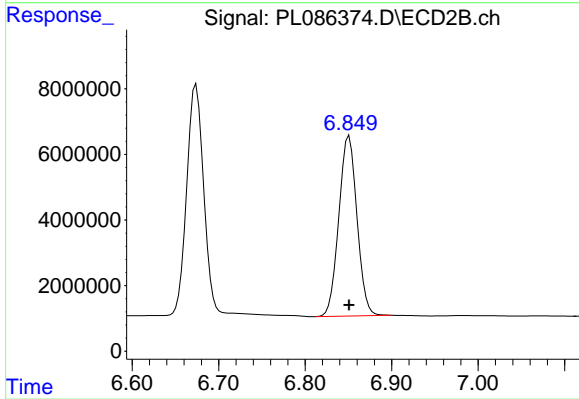
#21 Endrin ketone

R.T.: 6.674 min  
 Delta R.T.: 0.000 min  
 Response: 94218351  
 Conc: 73.93 ng/ml



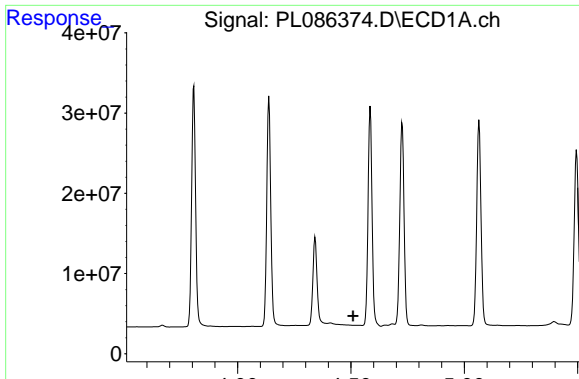
#22 Mirex

R.T.: 7.930 min  
 Delta R.T.: 0.000 min  
 Response: 190348317  
 Conc: 73.69 ng/ml



#22 Mirex

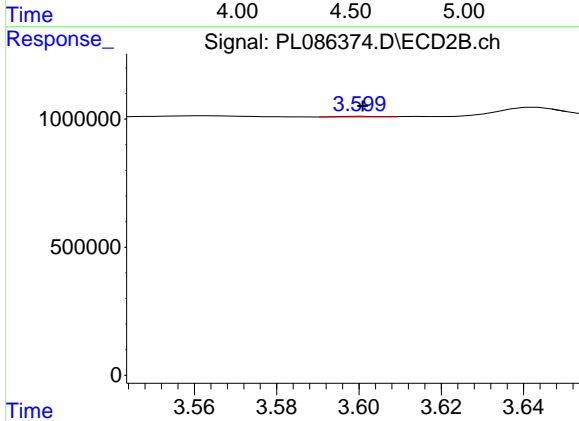
R.T.: 6.851 min  
 Delta R.T.: 0.000 min  
 Response: 79781834  
 Conc: 73.66 ng/ml



#23 Chlordane-1

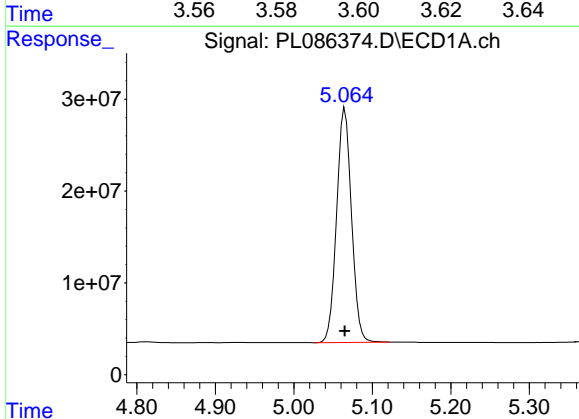
R.T.: 0.000 min  
 Exp R.T.: 4.510 min  
 Response: 0  
 Conc: N.D.

Instrument :  
 ECD\_P  
 ClientSampleId :



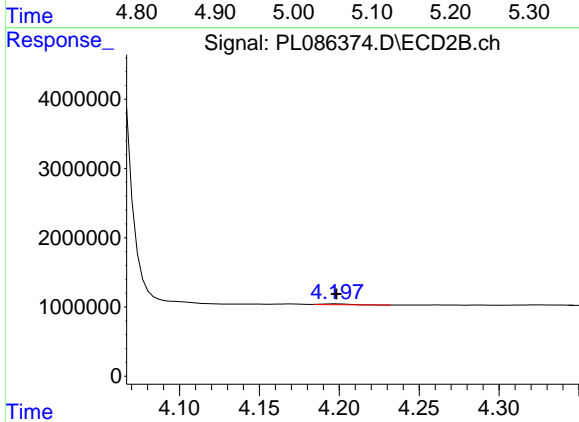
#23 Chlordane-1

R.T.: 3.601 min  
 Delta R.T.: 0.000 min  
 Response: 16466  
 Conc: 750.00 ng/ml



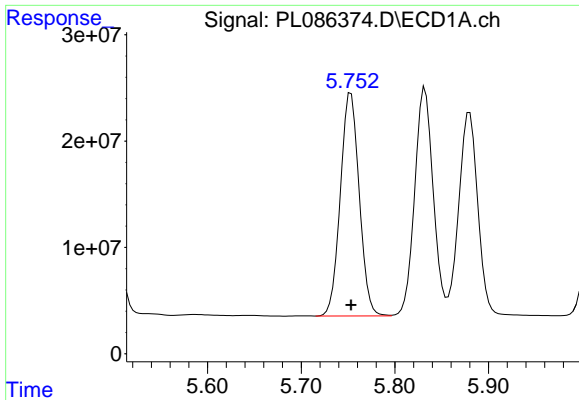
#24 Chlordane-2

R.T.: 5.065 min  
 Delta R.T.: 0.000 min  
 Response: 336136217  
 Conc: 750.00 ng/ml



#24 Chlordane-2

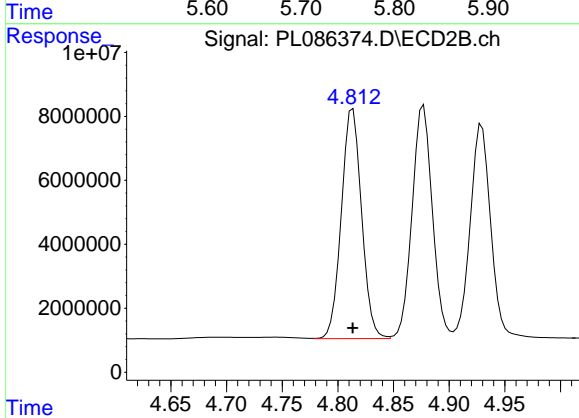
R.T.: 4.198 min  
 Delta R.T.: 0.000 min  
 Response: 147509  
 Conc: 750.00 ng/ml



#25 Chlordane-3

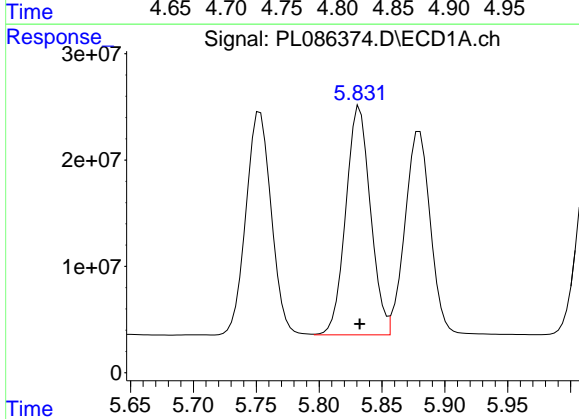
R.T.: 5.753 min  
 Delta R.T.: 0.000 min  
 Response: 294329738  
 Conc: 750.00 ng/ml

Instrument :  
 ECD\_P  
 ClientSampleId :



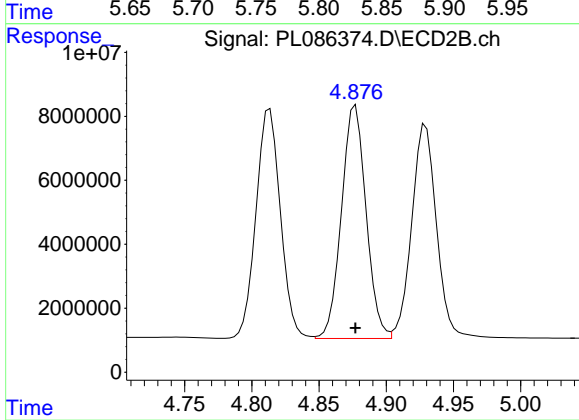
#25 Chlordane-3

R.T.: 4.814 min  
 Delta R.T.: 0.000 min  
 Response: 90904164  
 Conc: 750.00 ng/ml



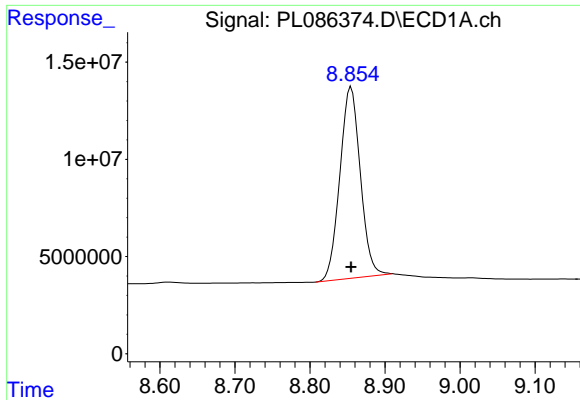
#26 Chlordane-4

R.T.: 5.832 min  
 Delta R.T.: 0.000 min  
 Response: 293863926  
 Conc: 750.00 ng/ml



#26 Chlordane-4

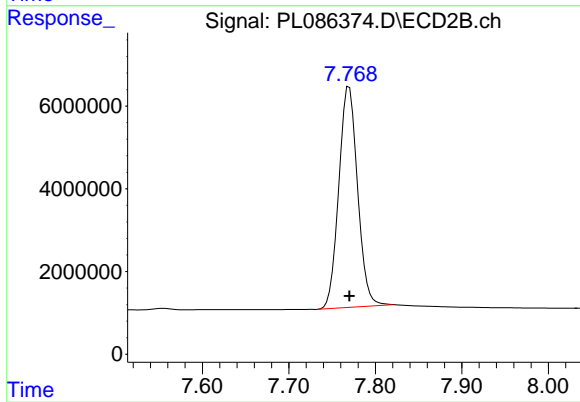
R.T.: 4.877 min  
 Delta R.T.: 0.000 min  
 Response: 92676095  
 Conc: 750.00 ng/ml



#28 Decachlorobiphenyl

R.T.: 8.855 min  
Delta R.T.: 0.000 min  
Response: 186690772  
Conc: 73.60 ng/ml

Instrument :  
ECD\_P  
ClientSampleId :



#28 Decachlorobiphenyl

R.T.: 7.770 min  
Delta R.T.: 0.000 min  
Response: 80181876  
Conc: 73.69 ng/ml