

Data Path : Z:\pestpcbsrv\HPCHEM1\ECD_P\Data\PP103023\
 Data File : PP061354.D
 Signal(s) : Signal #1: ECD1A.ch Signal #2: ECD2B.ch
 Acq On : 30 Oct 2023 21:18
 Operator : YP\AJ
 Sample : 05135-02
 Misc :
 ALS Vial : 29 Sample Multiplier: 1

Instrument :
 ECD_P
 ClientSampleId :

Integration File signal 1: autoint1.e
 Integration File signal 2: autoint2.e
 Quant Time: Oct 31 03:01:54 2023
 Quant Method : Z:\pestpcbsrv\HPCHEM1\ECD_P\methods\PP102723.M
 Quant Title : GC EXTRACTABLES
 QLast Update : Fri Oct 27 18:44:48 2023
 Response via : Initial Calibration
 Integrator: ChemStation

Volume Inj. : 2 µl
 Signal #1 Phase : ZB-MR1 Signal #2 Phase: ZB-MR2
 Signal #1 Info : 30Mx0.32mmx 0.50µ Signal #2 Info : 30M x 0.32mm x 0.25µm

Compound	RT#1	RT#2	Resp#1	Resp#2	ng/ml	ng/ml

System Monitoring Compounds						
1) SA Tetrachlo...	4.558	3.692	41684150	28426440	16.875	19.021
2) SA Decachlor...	10.535	8.762	31217265	23183244	16.555	15.096
Target Compounds						
3) L1 AR-1016-1	5.775f	4.793	5195483	553688	63.843	10.698 #
4) L1 AR-1016-2	5.775	4.811	5195483	2297157	44.678	32.480 #
5) L1 AR-1016-3	5.845	4.990	626854	1761662	8.864	44.654 #
6) L1 AR-1016-4	5.937	5.031	2183020	3845354	37.399	122.244 #
7) L1 AR-1016-5	6.238	5.247	5855721	5004001	101.999	119.034
9) L2 AR-1221-2	4.872	3.997	620222	747683	27.850	52.505 #
10) L2 AR-1221-3	4.937	0.000	173558	0	2.679	N.D. #
11) L3 AR-1232-1	4.937	0.000	173558	0	3.252	N.D. #
12) L3 AR-1232-2	5.479	4.811	2030170	2297157	68.620	71.875
13) L3 AR-1232-3	5.775	4.990	5195483	1761662	104.212	99.910
14) L3 AR-1232-4	5.937	5.073	2183020	3847634	86.546	241.329 #
15) L3 AR-1232-5	6.030	5.247	6325842	5004001	292.922	277.145
16) L4 AR-1242-1	5.775f	4.793	5195483	553688	79.422	13.095 #
17) L4 AR-1242-2	5.775	4.811	5195483	2297157	56.065	40.407 #
18) L4 AR-1242-3	5.845	4.990	626854	1761662	10.983	54.889 #
19) L4 AR-1242-4	5.937	5.073	2183020	3847634	44.906	119.631 #
20) L4 AR-1242-5	6.687	5.603	8659989	7334051	167.421	184.761
21) L5 AR-1248-1	5.775f	4.793	5195483	553688	106.464	17.817 #
22) L5 AR-1248-2	6.030	5.031	6325842	3845354	83.943	88.155
23) L5 AR-1248-3	6.238	5.073	5855721	3847634	70.215	82.788
24) L5 AR-1248-4	6.647	5.247	5158638	5004001	58.520	89.802 #
25) L5 AR-1248-5	6.687	5.642	8659989	7433892	102.130	142.871 #
26) L6 AR-1254-1	6.620	5.603	7629836	7334051	86.150	93.068
27) L6 AR-1254-2	6.846	5.751	10075619	2982090	75.542	42.698 #
28) L6 AR-1254-3	7.215	6.159	6308871	6003726	45.616	52.920
29) L6 AR-1254-4	7.503	6.388	4704425	2941877	47.258	42.328
30) L6 AR-1254-5	7.927	6.810	3764064	2966188	34.203	28.033
31) L7 AR-1260-1	7.380	6.290	2366429	3504790	21.036	43.075 #
32) L7 AR-1260-2	7.639	6.479	3964312	2108736	30.643	21.621 #
33) L7 AR-1260-3	8.004	6.633	2277009	2116792	26.810	22.872
34) L7 AR-1260-4	8.236	7.109	2807438	1481559	27.774	20.206 #
35) L7 AR-1260-5	8.576	7.352	4461778	3098214	23.037	18.144
36) L8 AR-1262-1	8.004	6.901	2277009	817860	17.124	18.145
37) L8 AR-1262-2	8.576	7.109	4461778	1481559	19.090	14.801
38) L8 AR-1262-3	8.923f	7.638	3033801	807932	19.109	10.152 #
39) L8 AR-1262-4	9.004	7.701	3323413	2377921	27.586	16.459 #
40) L8 AR-1262-5	9.711	8.202	1128089	655829	13.875	9.488 #
41) L9 AR-1268-1	8.923f	7.638	3033801	807932	10.594	3.470 #
42) L9 AR-1268-2	9.004	7.701	3323413	2377921	12.708	11.331

Data Path : Z:\pestpcbsrv\HPCHEM1\ECD_P\Data\PP103023\
 Data File : PP061354.D
 Signal(s) : Signal #1: ECD1A.ch Signal #2: ECD2B.ch
 Acq On : 30 Oct 2023 21:18
 Operator : YP\AJ
 Sample : 05135-02
 Misc :
 ALS Vial : 29 Sample Multiplier: 1

Instrument :
 ECD_P
 ClientSampleId :

Integration File signal 1: autoint1.e
 Integration File signal 2: autoint2.e
 Quant Time: Oct 31 03:01:54 2023
 Quant Method : Z:\pestpcbsrv\HPCHEM1\ECD_P\methods\PP102723.M
 Quant Title : GC EXTRACTABLES
 QLast Update : Fri Oct 27 18:44:48 2023
 Response via : Initial Calibration
 Integrator: ChemStation

Volume Inj. : 2 µl
 Signal #1 Phase : ZB-MR1 Signal #2 Phase: ZB-MR2
 Signal #1 Info : 30Mx0.32mmx 0.50µ Signal #2 Info : 30M x 0.32mm x 0.25µm

	Compound	RT#1	RT#2	Resp#1	Resp#2	ng/ml	ng/ml
43)	L9 AR-1268-3	9.270f	0.000	394849	0	1.734	N.D. #
44)	L9 AR-1268-4	9.711	8.202	1128089	655829	12.462	8.484 #
45)	L9 AR-1268-5	0.000	8.501	0	405604	N.D.	0.715 #

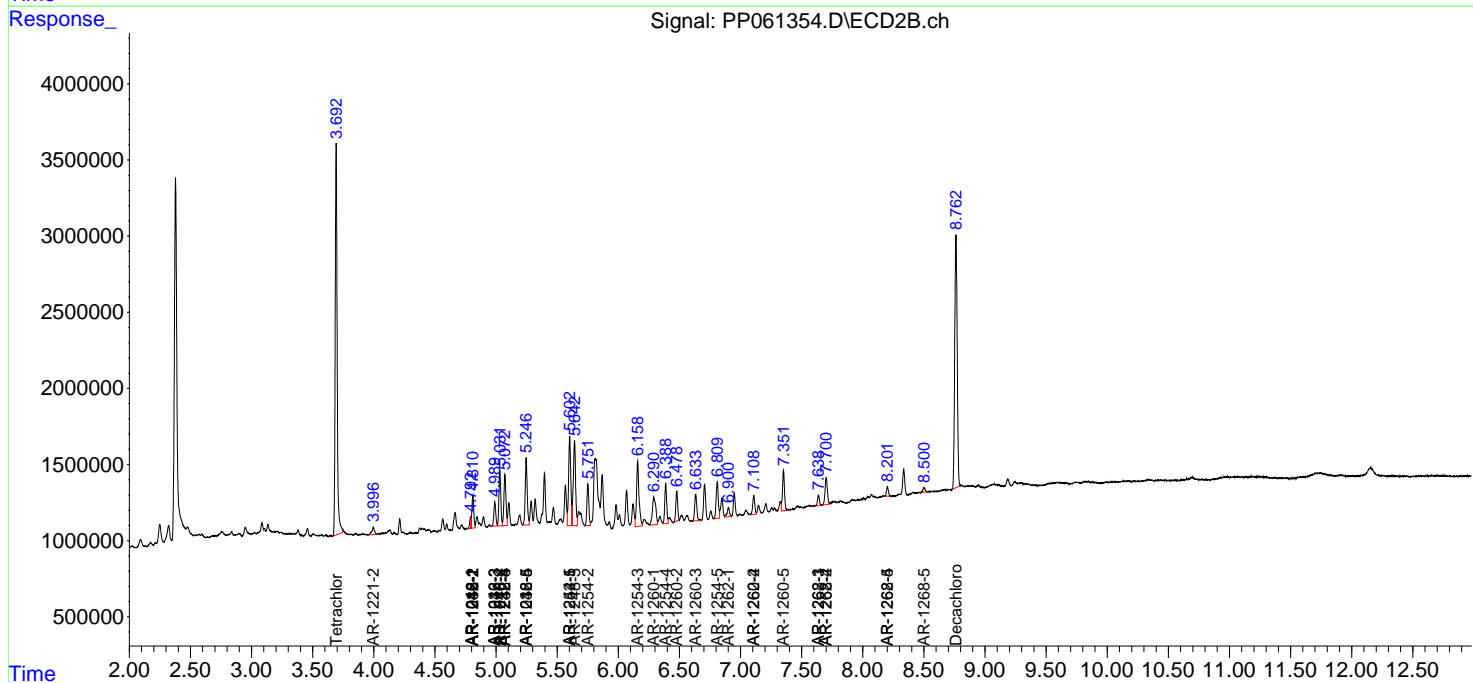
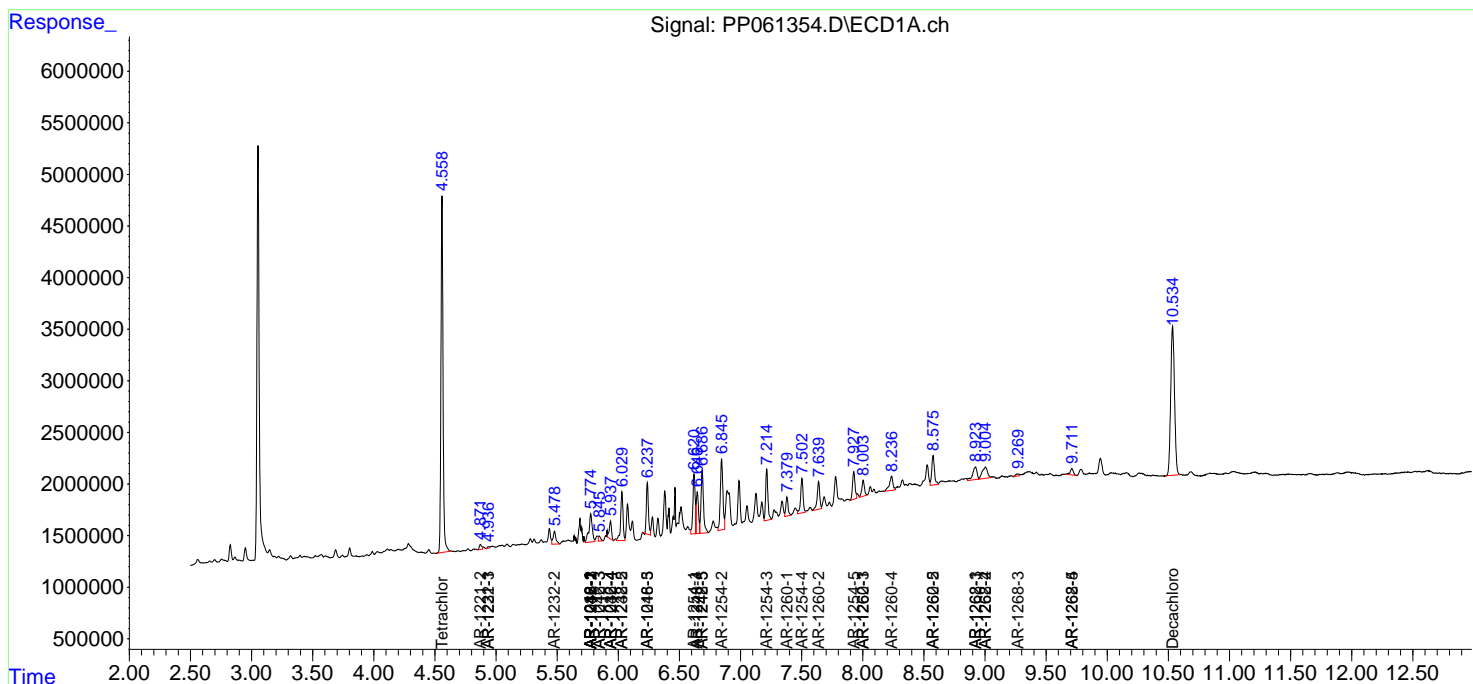
(f)=RT Delta > 1/2 Window (#)=Amounts differ by > 25% (m)=manual int.

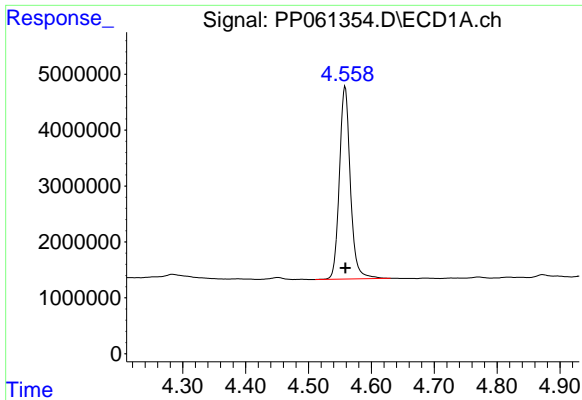
Data Path : Z:\pestpcbsrv\HPCHEM1\ECD_P\Data\PP103023\
 Data File : PP061354.D
 Signal(s) : Signal #1: ECD1A.ch Signal #2: ECD2B.ch
 Acq On : 30 Oct 2023 21:18
 Operator : YP\AJ
 Sample : 05135-02
 Misc :
 ALS Vial : 29 Sample Multiplier: 1

Instrument :
 ECD_P
 ClientSampleId :

Integration File signal 1: autoint1.e
 Integration File signal 2: autoint2.e
 Quant Time: Oct 31 03:01:54 2023
 Quant Method : Z:\pestpcbsrv\HPCHEM1\ECD_P\methods\PP102723.M
 Quant Title : GC EXTRACTABLES
 QLast Update : Fri Oct 27 18:44:48 2023
 Response via : Initial Calibration
 Integrator: ChemStation

Volume Inj. : 2 µl
 Signal #1 Phase : ZB-MR1 Signal #2 Phase: ZB-MR2
 Signal #1 Info : 30Mx0.32mmx 0.50µ Signal #2 Info : 30M x 0.32mm x 0.25µm

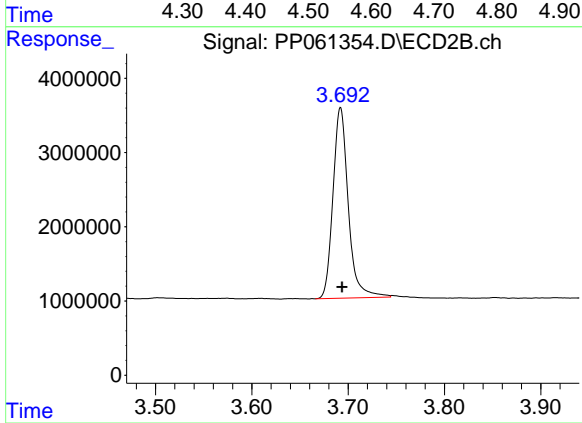




#1 Tetrachloro-m-xylene

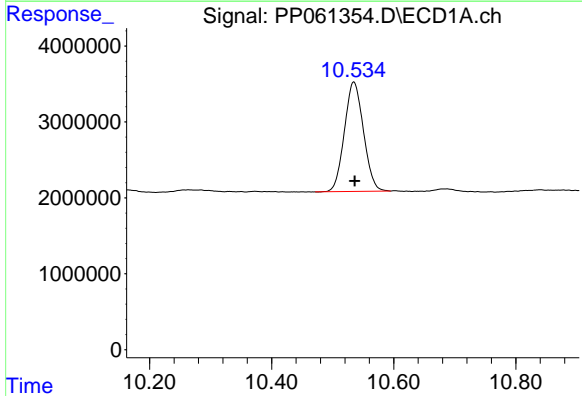
R.T.: 4.558 min
Delta R.T.: 0.000 min
Response: 41684150
Conc: 16.87 ng/ml

Instrument :
ECD_P
ClientSampleId :



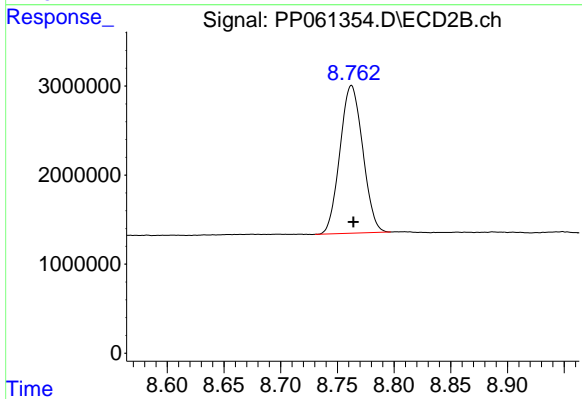
#1 Tetrachloro-m-xylene

R.T.: 3.692 min
Delta R.T.: -0.002 min
Response: 28426440
Conc: 19.02 ng/ml



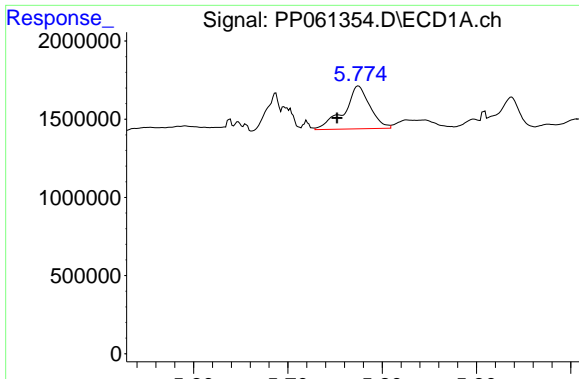
#2 Decachlorobiphenyl

R.T.: 10.535 min
Delta R.T.: -0.001 min
Response: 31217265
Conc: 16.55 ng/ml



#2 Decachlorobiphenyl

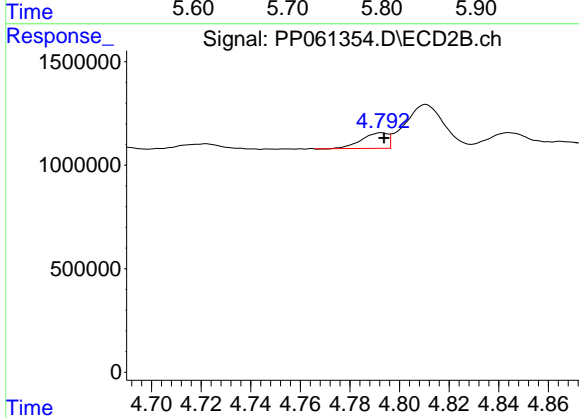
R.T.: 8.762 min
Delta R.T.: -0.002 min
Response: 23183244
Conc: 15.10 ng/ml



#3 AR-1016-1

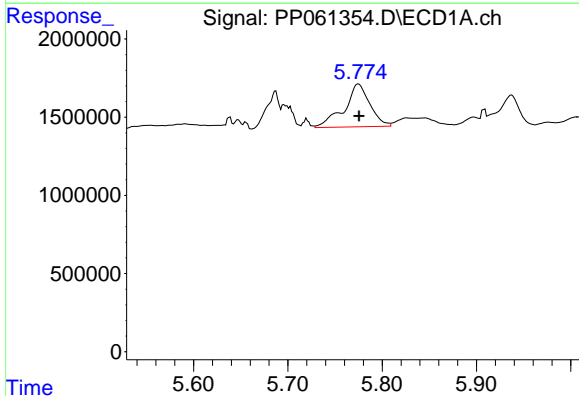
R.T.: 5.775 min
 Delta R.T.: 0.023 min
 Response: 5195483
 Conc: 63.84 ng/ml

Instrument :
 ECD_P
 ClientSampleId :



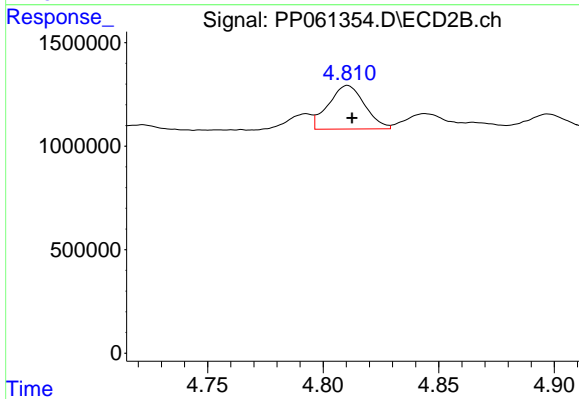
#3 AR-1016-1

R.T.: 4.793 min
 Delta R.T.: -0.001 min
 Response: 553688
 Conc: 10.70 ng/ml



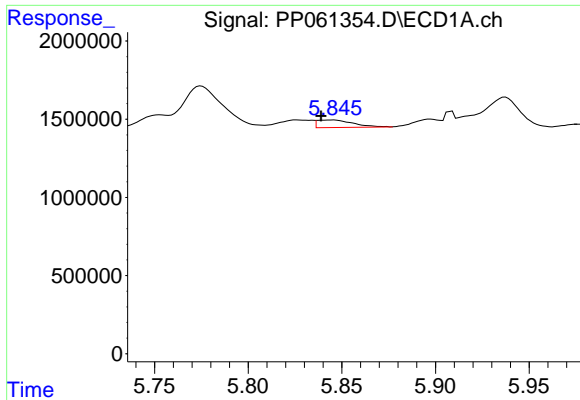
#4 AR-1016-2

R.T.: 5.775 min
 Delta R.T.: 0.000 min
 Response: 5195483
 Conc: 44.68 ng/ml



#4 AR-1016-2

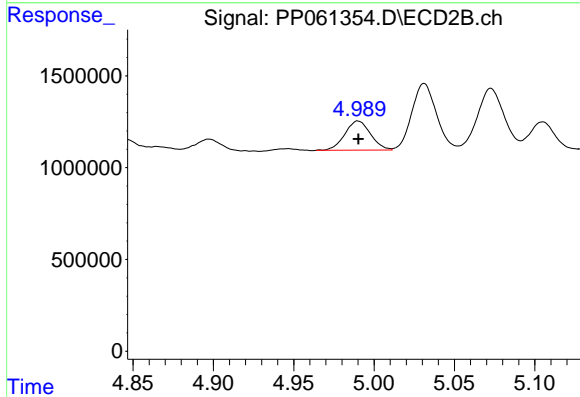
R.T.: 4.811 min
 Delta R.T.: -0.002 min
 Response: 2297157
 Conc: 32.48 ng/ml



#5 AR-1016-3

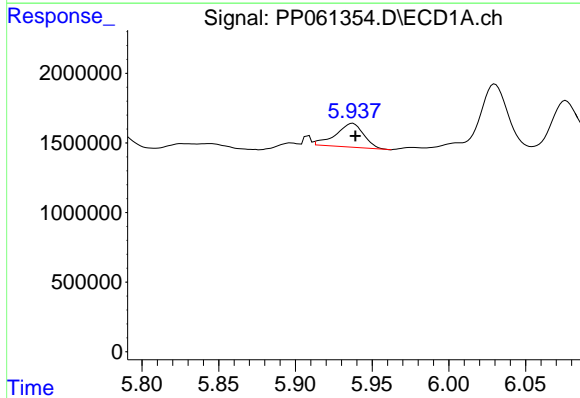
R.T.: 5.845 min
 Delta R.T.: 0.006 min
 Response: 626854
 Conc: 8.86 ng/ml

Instrument :
 ECD_P
 ClientSampleId :



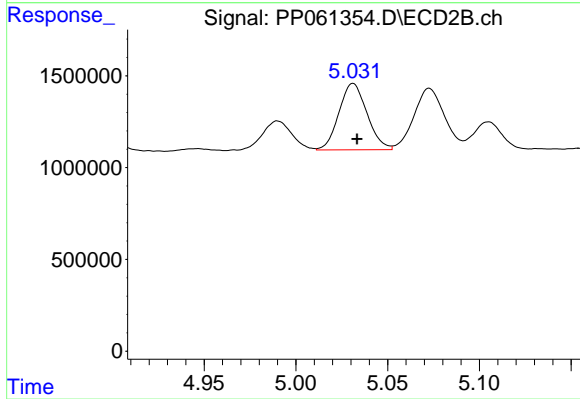
#5 AR-1016-3

R.T.: 4.990 min
 Delta R.T.: 0.000 min
 Response: 1761662
 Conc: 44.65 ng/ml



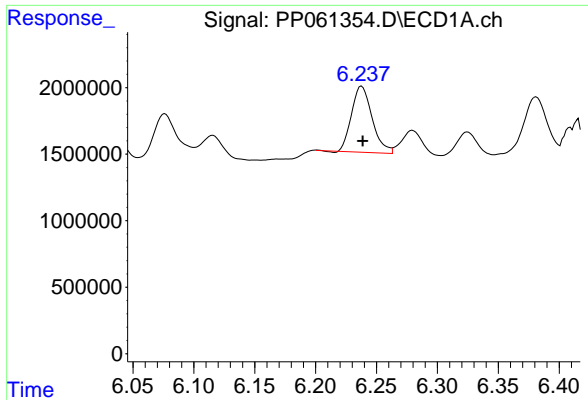
#6 AR-1016-4

R.T.: 5.937 min
 Delta R.T.: -0.002 min
 Response: 2183020
 Conc: 37.40 ng/ml



#6 AR-1016-4

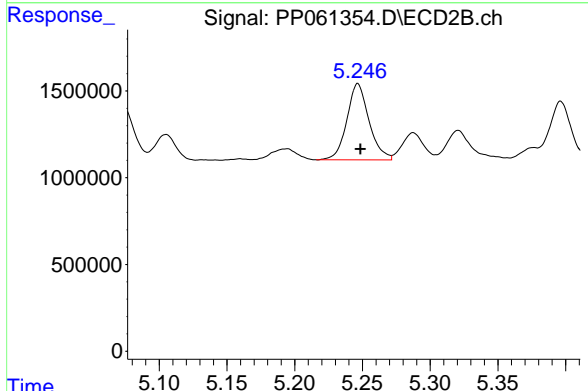
R.T.: 5.031 min
 Delta R.T.: -0.002 min
 Response: 3845354
 Conc: 122.24 ng/ml



#7 AR-1016-5

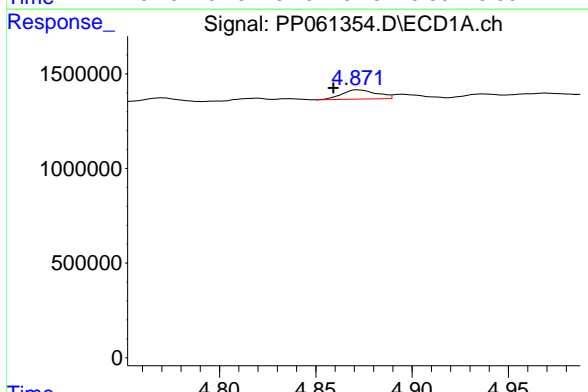
R.T.: 6.238 min
 Delta R.T.: 0.000 min
 Response: 5855721
 Conc: 102.00 ng/ml

Instrument :
 ECD_P
 ClientSampleId :



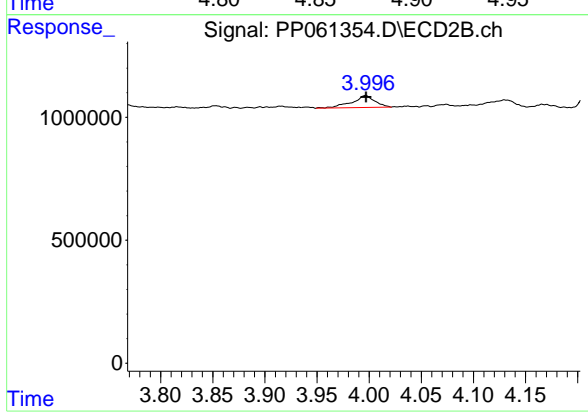
#7 AR-1016-5

R.T.: 5.247 min
 Delta R.T.: -0.002 min
 Response: 5004001
 Conc: 119.03 ng/ml



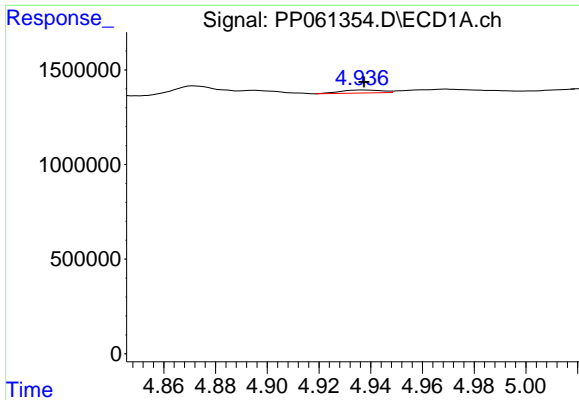
#9 AR-1221-2

R.T.: 4.872 min
 Delta R.T.: 0.013 min
 Response: 620222
 Conc: 27.85 ng/ml



#9 AR-1221-2

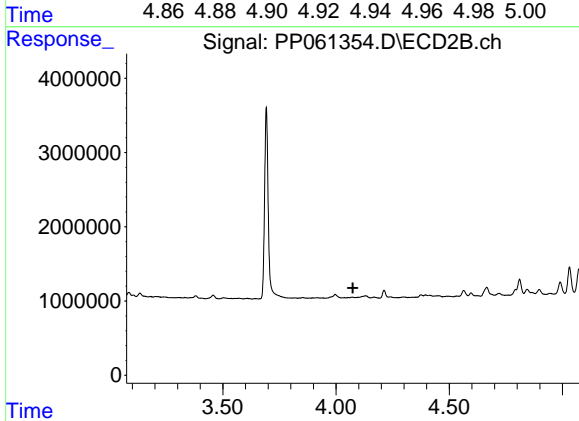
R.T.: 3.997 min
 Delta R.T.: 0.000 min
 Response: 747683
 Conc: 52.51 ng/ml



#10 AR-1221-3

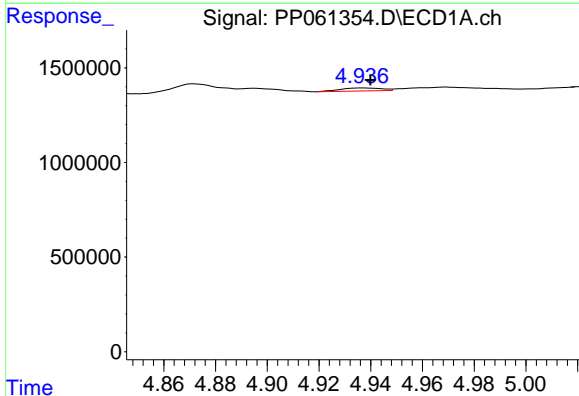
R.T.: 4.937 min
 Delta R.T.: 0.000 min
 Response: 173558
 Conc: 2.68 ng/ml

Instrument :
 ECD_P
 ClientSampleId :



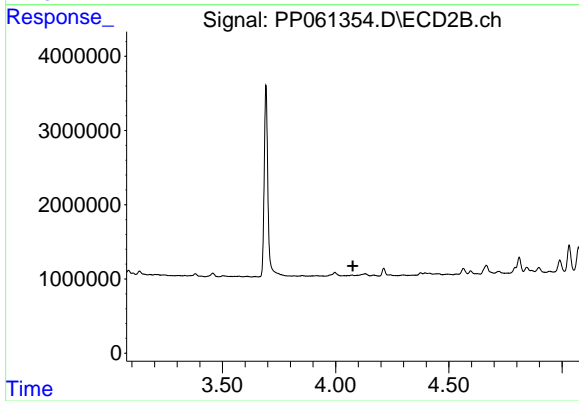
#10 AR-1221-3

R.T.: 0.000 min
 Exp R.T. : 4.074 min
 Response: 0
 Conc: N.D.



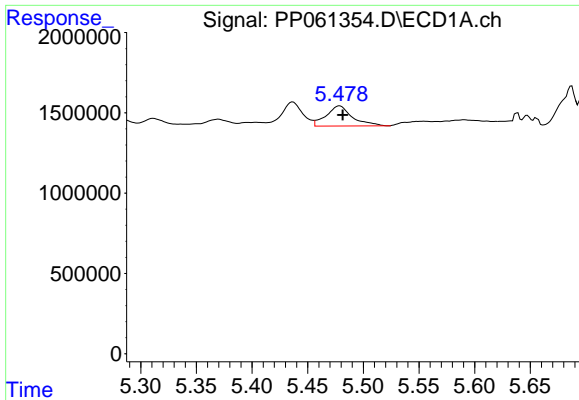
#11 AR-1232-1

R.T.: 4.937 min
 Delta R.T.: -0.003 min
 Response: 173558
 Conc: 3.25 ng/ml



#11 AR-1232-1

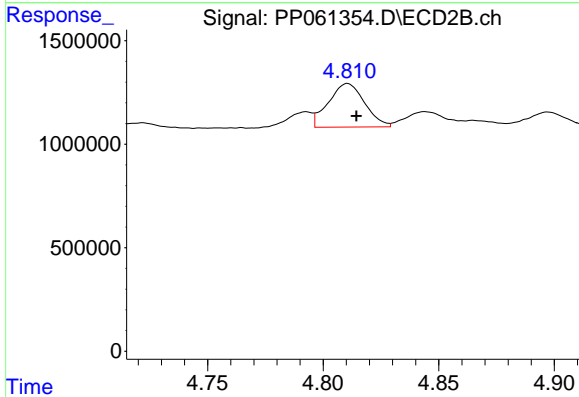
R.T.: 0.000 min
 Exp R.T. : 4.077 min
 Response: 0
 Conc: N.D.



#12 AR-1232-2

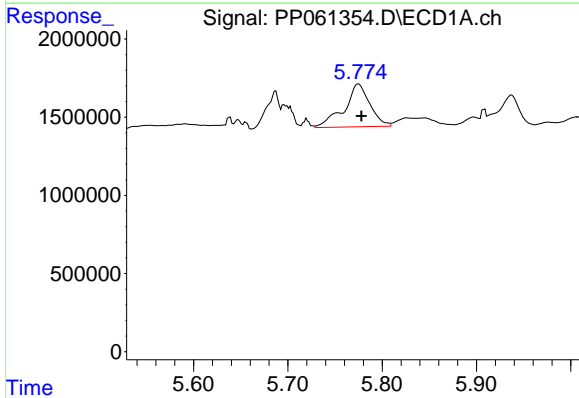
R.T.: 5.479 min
 Delta R.T.: -0.003 min
 Response: 2030170
 Conc: 68.62 ng/ml

Instrument :
 ECD_P
 ClientSampleId :



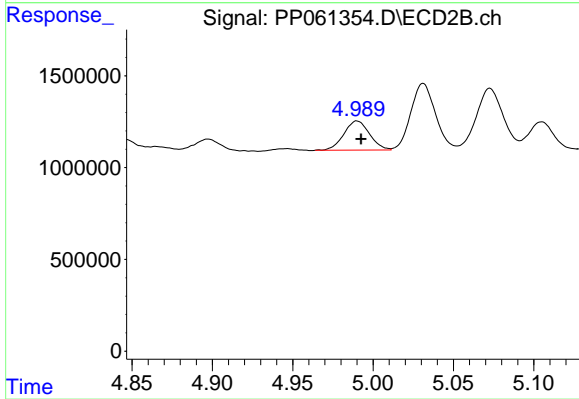
#12 AR-1232-2

R.T.: 4.811 min
 Delta R.T.: -0.004 min
 Response: 2297157
 Conc: 71.87 ng/ml



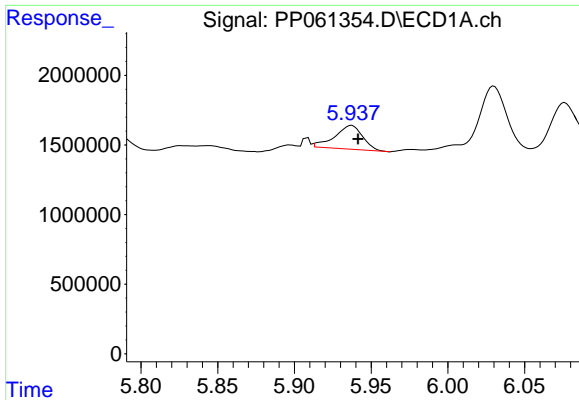
#13 AR-1232-3

R.T.: 5.775 min
 Delta R.T.: -0.003 min
 Response: 5195483
 Conc: 104.21 ng/ml



#13 AR-1232-3

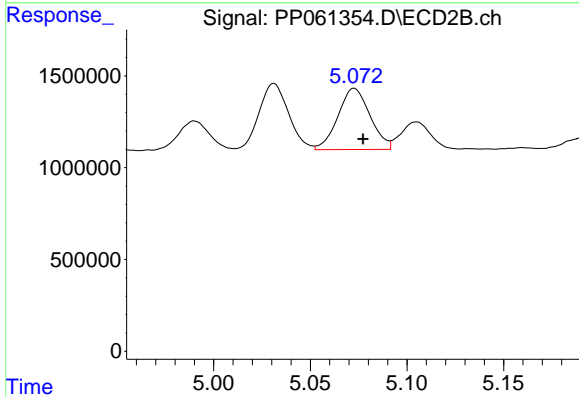
R.T.: 4.990 min
 Delta R.T.: -0.003 min
 Response: 1761662
 Conc: 99.91 ng/ml



#14 AR-1232-4

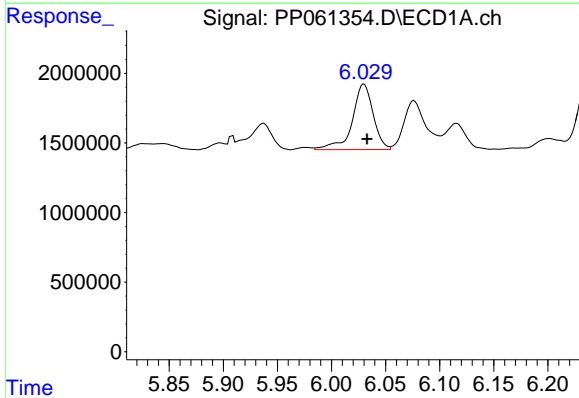
R.T.: 5.937 min
 Delta R.T.: -0.004 min
 Response: 2183020
 Conc: 86.55 ng/ml

Instrument :
 ECD_P
 ClientSampleId :



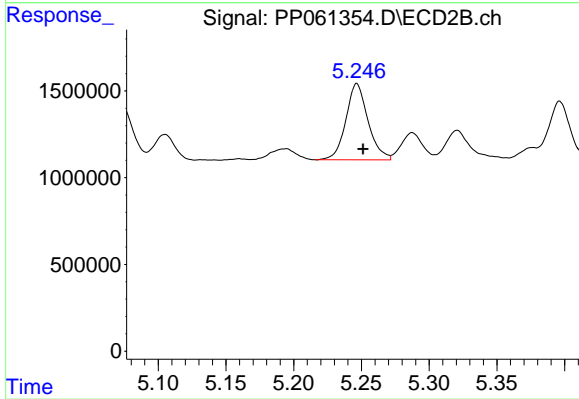
#14 AR-1232-4

R.T.: 5.073 min
 Delta R.T.: -0.005 min
 Response: 3847634
 Conc: 241.33 ng/ml



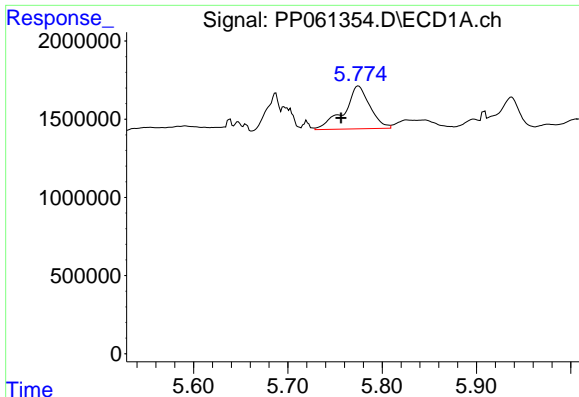
#15 AR-1232-5

R.T.: 6.030 min
 Delta R.T.: -0.003 min
 Response: 6325842
 Conc: 292.92 ng/ml



#15 AR-1232-5

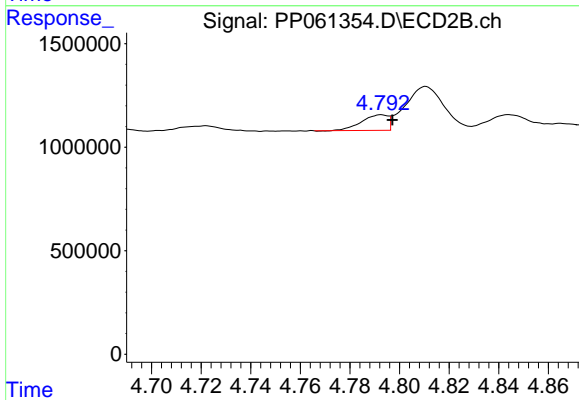
R.T.: 5.247 min
 Delta R.T.: -0.005 min
 Response: 5004001
 Conc: 277.14 ng/ml



#16 AR-1242-1

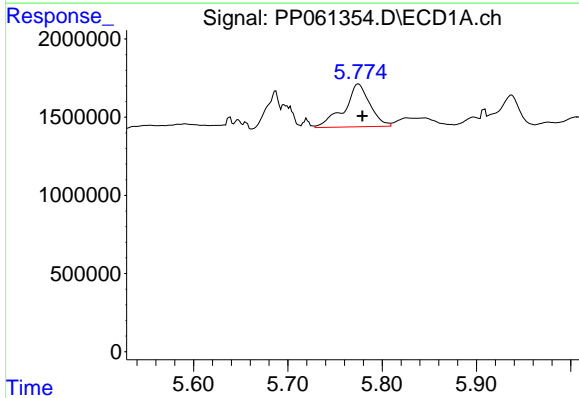
R.T.: 5.775 min
 Delta R.T.: 0.019 min
 Response: 5195483
 Conc: 79.42 ng/ml

Instrument :
 ECD_P
 ClientSampleId :



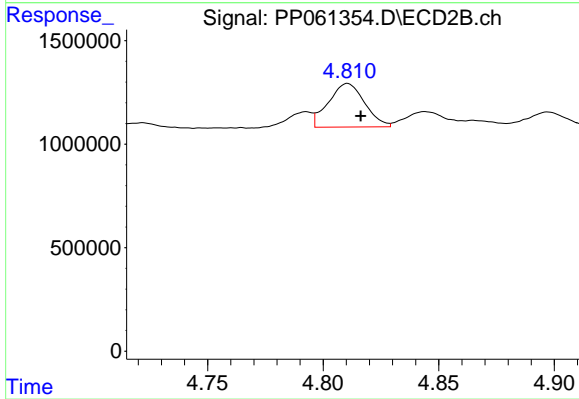
#16 AR-1242-1

R.T.: 4.793 min
 Delta R.T.: -0.005 min
 Response: 553688
 Conc: 13.10 ng/ml



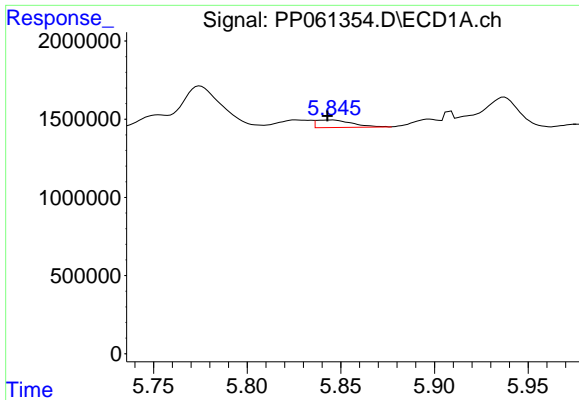
#17 AR-1242-2

R.T.: 5.775 min
 Delta R.T.: -0.004 min
 Response: 5195483
 Conc: 56.07 ng/ml



#17 AR-1242-2

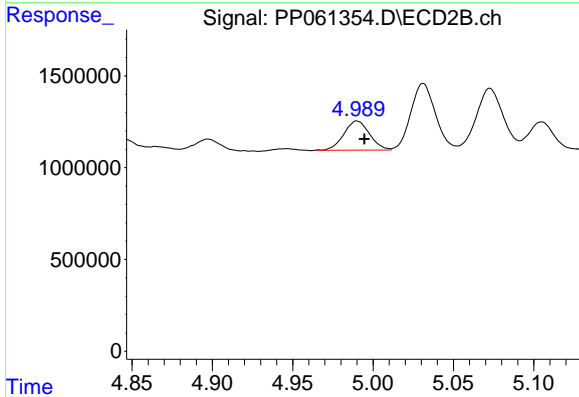
R.T.: 4.811 min
 Delta R.T.: -0.006 min
 Response: 2297157
 Conc: 40.41 ng/ml



#18 AR-1242-3

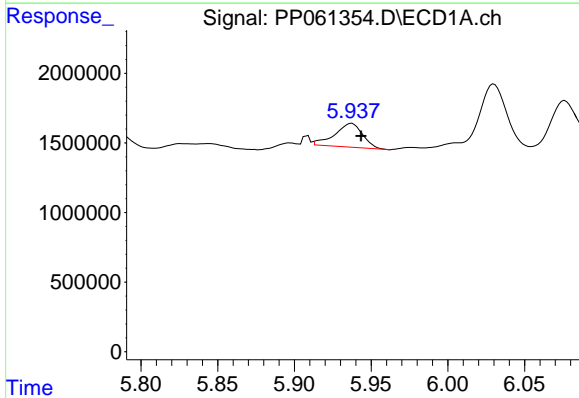
R.T.: 5.845 min
 Delta R.T.: 0.002 min
 Response: 626854
 Conc: 10.98 ng/ml

Instrument :
 ECD_P
 ClientSampleId :



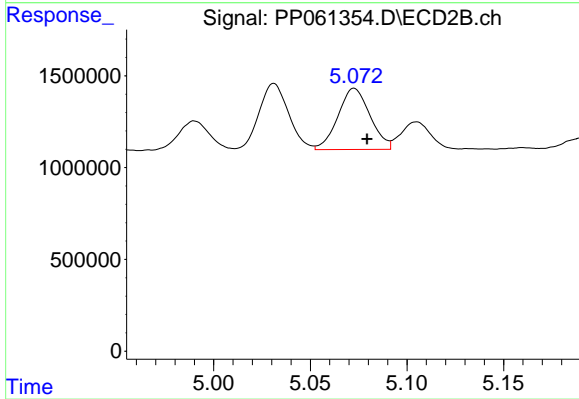
#18 AR-1242-3

R.T.: 4.990 min
 Delta R.T.: -0.005 min
 Response: 1761662
 Conc: 54.89 ng/ml



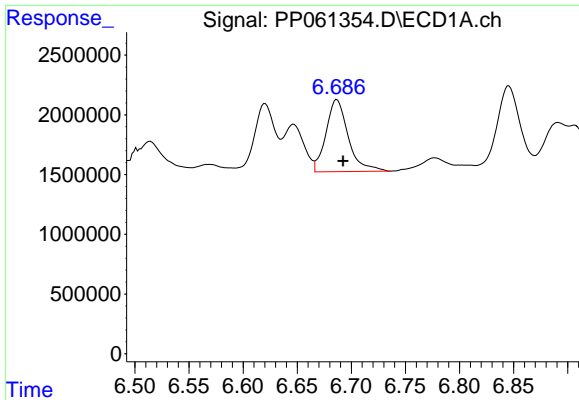
#19 AR-1242-4

R.T.: 5.937 min
 Delta R.T.: -0.006 min
 Response: 2183020
 Conc: 44.91 ng/ml



#19 AR-1242-4

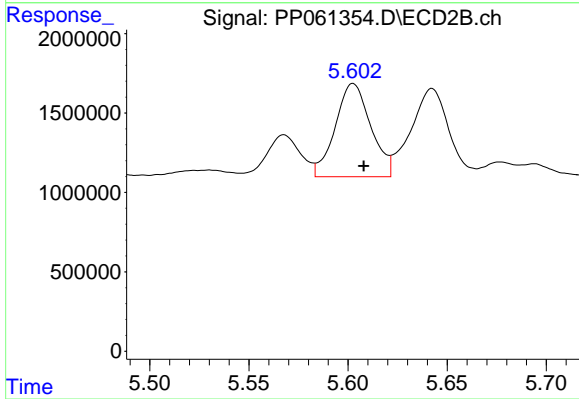
R.T.: 5.073 min
 Delta R.T.: -0.007 min
 Response: 3847634
 Conc: 119.63 ng/ml



#20 AR-1242-5

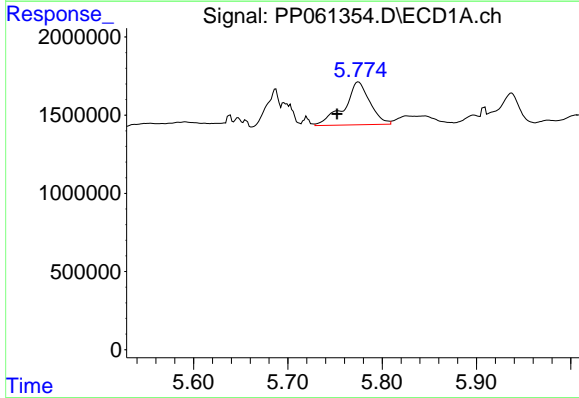
R.T.: 6.687 min
 Delta R.T.: -0.006 min
 Response: 8659989
 Conc: 167.42 ng/ml

Instrument :
 ECD_P
 ClientSampleId :



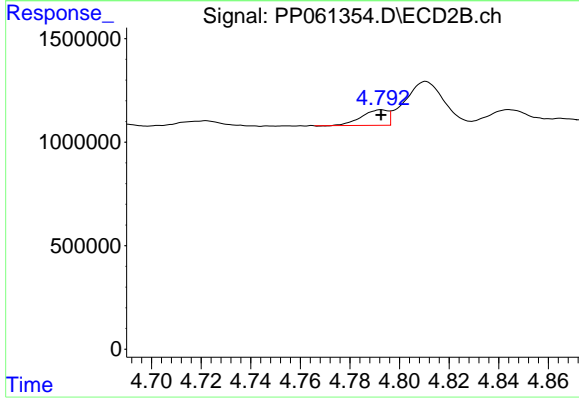
#20 AR-1242-5

R.T.: 5.603 min
 Delta R.T.: -0.005 min
 Response: 7334051
 Conc: 184.76 ng/ml



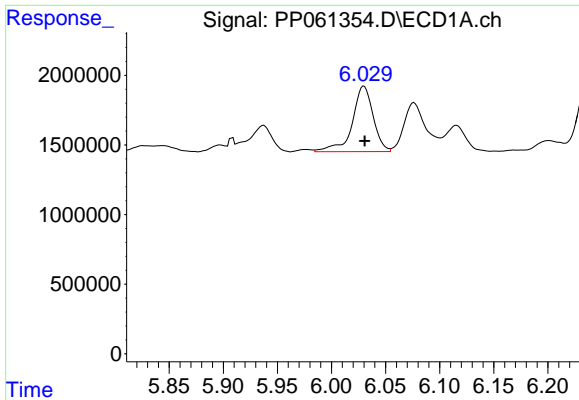
#21 AR-1248-1

R.T.: 5.775 min
 Delta R.T.: 0.023 min
 Response: 5195483
 Conc: 106.46 ng/ml



#21 AR-1248-1

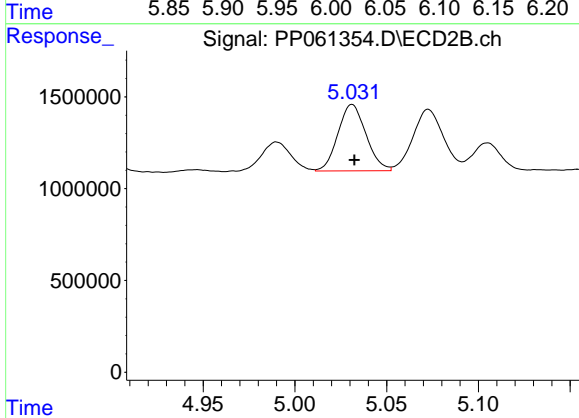
R.T.: 4.793 min
 Delta R.T.: 0.000 min
 Response: 553688
 Conc: 17.82 ng/ml



#22 AR-1248-2

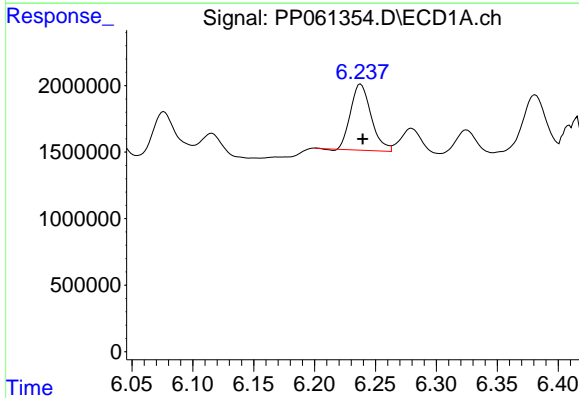
R.T.: 6.030 min
 Delta R.T.: 0.000 min
 Response: 6325842
 Conc: 83.94 ng/ml

Instrument :
 ECD_P
 ClientSampleId :



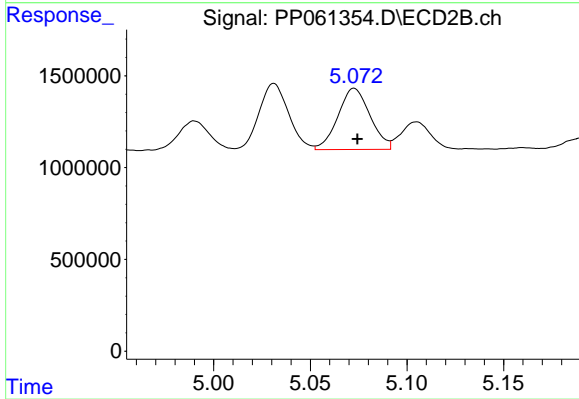
#22 AR-1248-2

R.T.: 5.031 min
 Delta R.T.: -0.001 min
 Response: 3845354
 Conc: 88.15 ng/ml



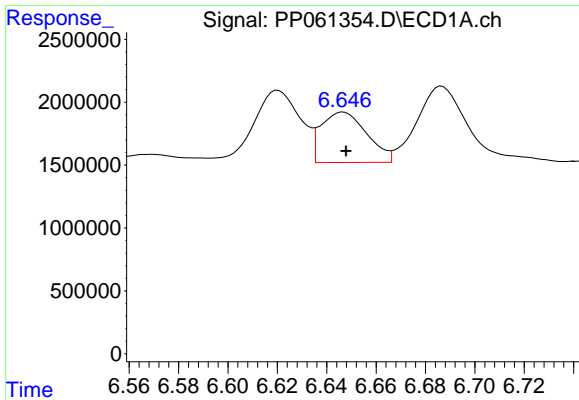
#23 AR-1248-3

R.T.: 6.238 min
 Delta R.T.: -0.002 min
 Response: 5855721
 Conc: 70.21 ng/ml



#23 AR-1248-3

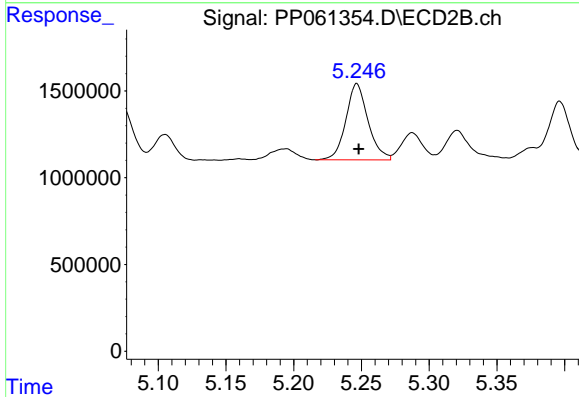
R.T.: 5.073 min
 Delta R.T.: -0.002 min
 Response: 3847634
 Conc: 82.79 ng/ml



#24 AR-1248-4

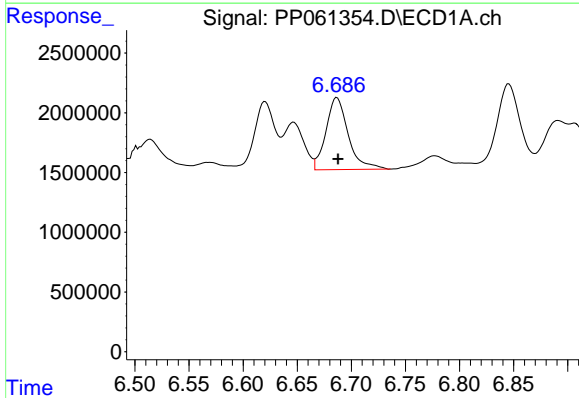
R.T.: 6.647 min
 Delta R.T.: -0.001 min
 Response: 5158638
 Conc: 58.52 ng/ml

Instrument :
 ECD_P
 ClientSampleId :



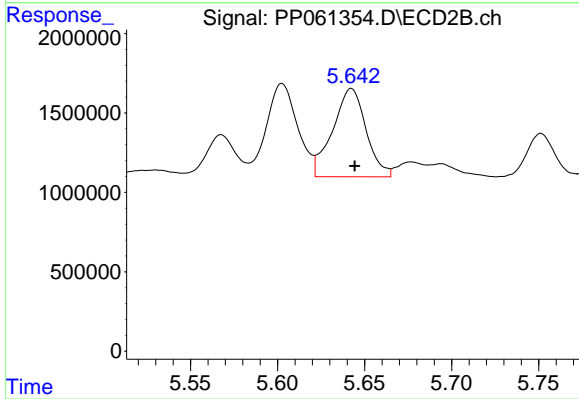
#24 AR-1248-4

R.T.: 5.247 min
 Delta R.T.: -0.001 min
 Response: 5004001
 Conc: 89.80 ng/ml



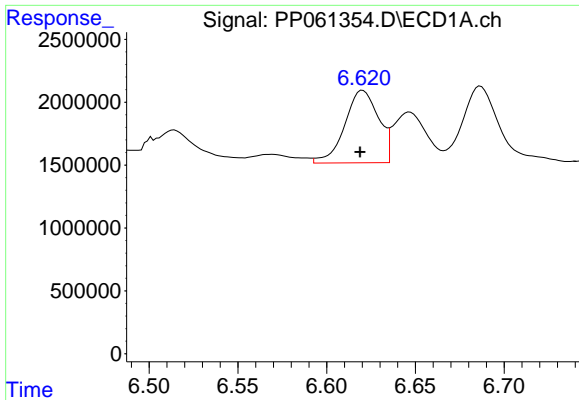
#25 AR-1248-5

R.T.: 6.687 min
 Delta R.T.: -0.001 min
 Response: 8659989
 Conc: 102.13 ng/ml



#25 AR-1248-5

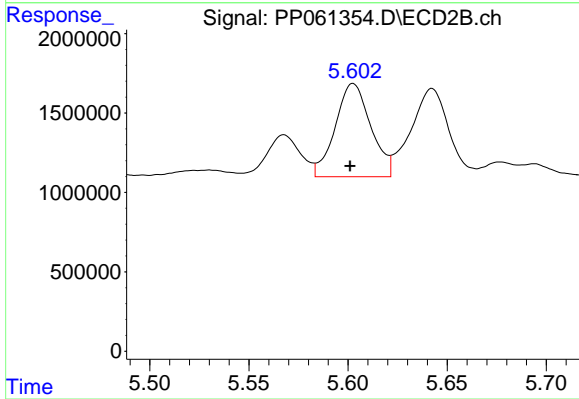
R.T.: 5.642 min
 Delta R.T.: -0.002 min
 Response: 7433892
 Conc: 142.87 ng/ml



#26 AR-1254-1

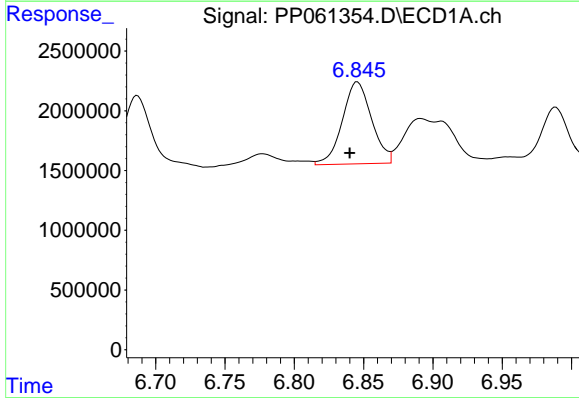
R.T.: 6.620 min
 Delta R.T.: 0.002 min
 Response: 7629836
 Conc: 86.15 ng/ml

Instrument :
 ECD_P
 ClientSampleId :



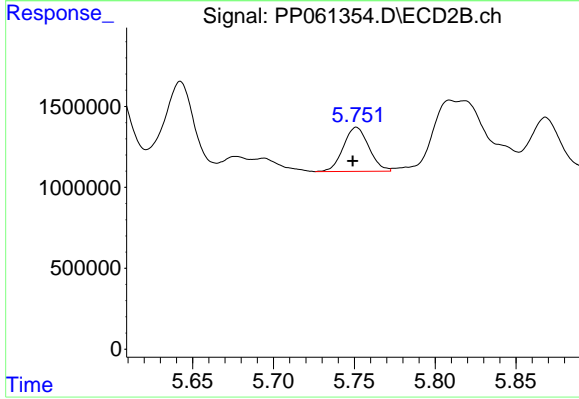
#26 AR-1254-1

R.T.: 5.603 min
 Delta R.T.: 0.002 min
 Response: 7334051
 Conc: 93.07 ng/ml



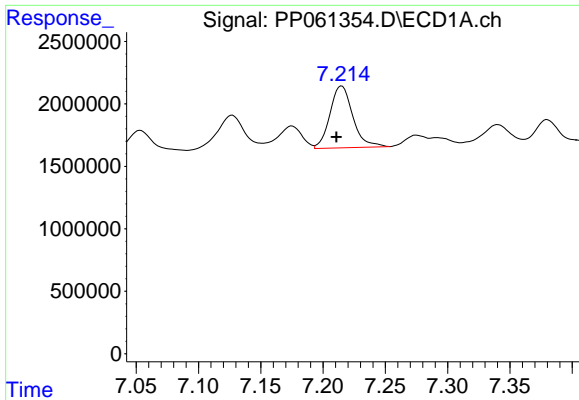
#27 AR-1254-2

R.T.: 6.846 min
 Delta R.T.: 0.006 min
 Response: 10075619
 Conc: 75.54 ng/ml



#27 AR-1254-2

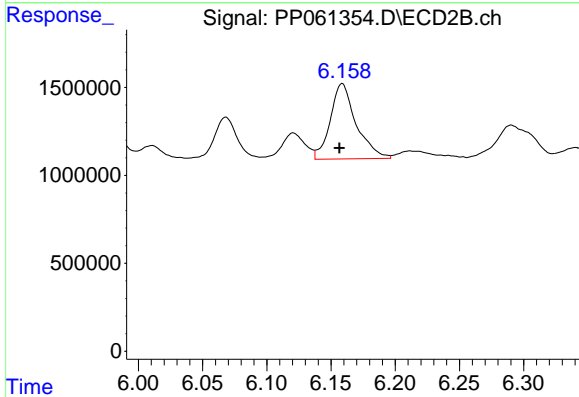
R.T.: 5.751 min
 Delta R.T.: 0.002 min
 Response: 2982090
 Conc: 42.70 ng/ml



#28 AR-1254-3

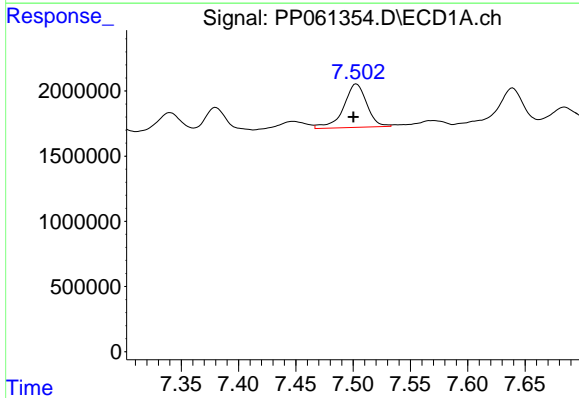
R.T.: 7.215 min
 Delta R.T.: 0.004 min
 Response: 6308871
 Conc: 45.62 ng/ml

Instrument :
 ECD_P
 ClientSampleId :



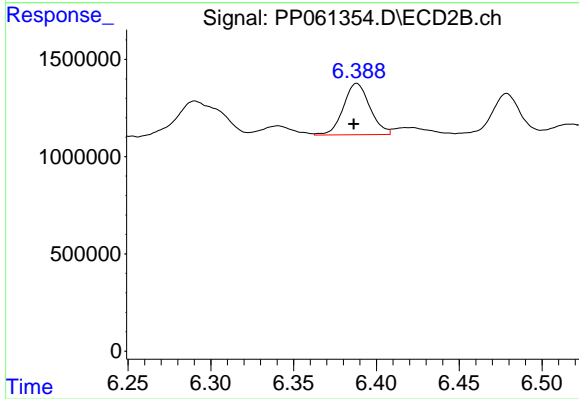
#28 AR-1254-3

R.T.: 6.159 min
 Delta R.T.: 0.002 min
 Response: 6003726
 Conc: 52.92 ng/ml



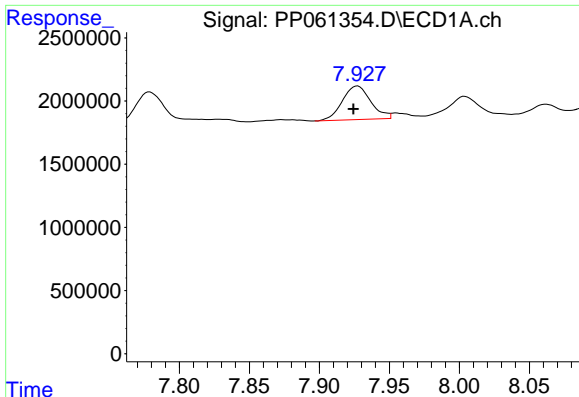
#29 AR-1254-4

R.T.: 7.503 min
 Delta R.T.: 0.003 min
 Response: 4704425
 Conc: 47.26 ng/ml



#29 AR-1254-4

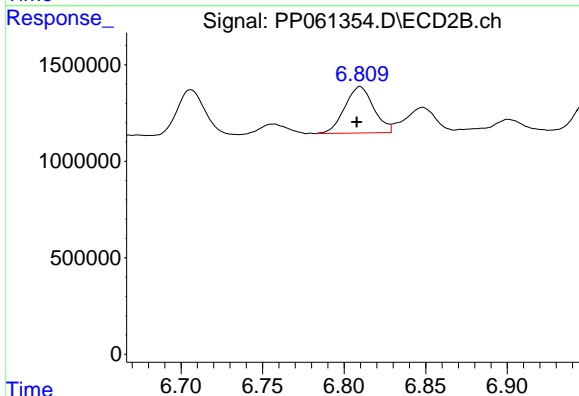
R.T.: 6.388 min
 Delta R.T.: 0.002 min
 Response: 2941877
 Conc: 42.33 ng/ml



#30 AR-1254-5

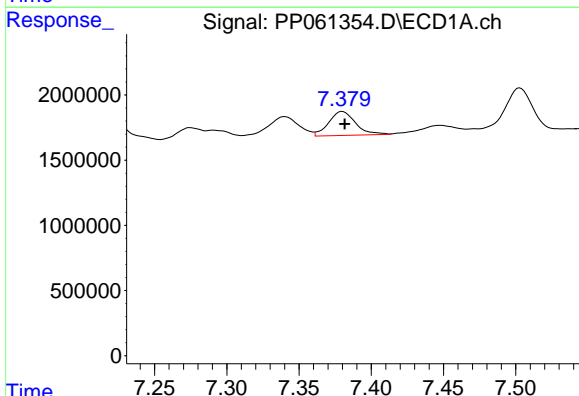
R.T.: 7.927 min
 Delta R.T.: 0.003 min
 Response: 3764064
 Conc: 34.20 ng/ml

Instrument :
 ECD_P
 ClientSampleId :



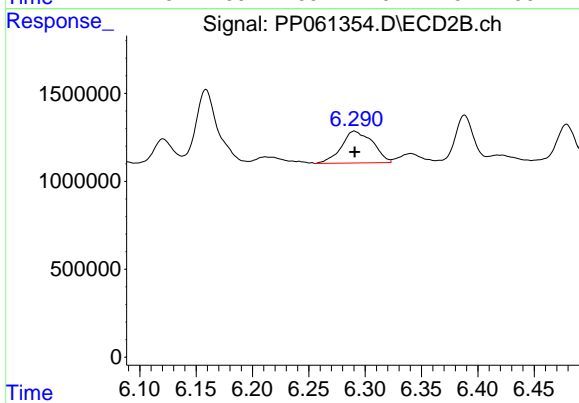
#30 AR-1254-5

R.T.: 6.810 min
 Delta R.T.: 0.002 min
 Response: 2966188
 Conc: 28.03 ng/ml



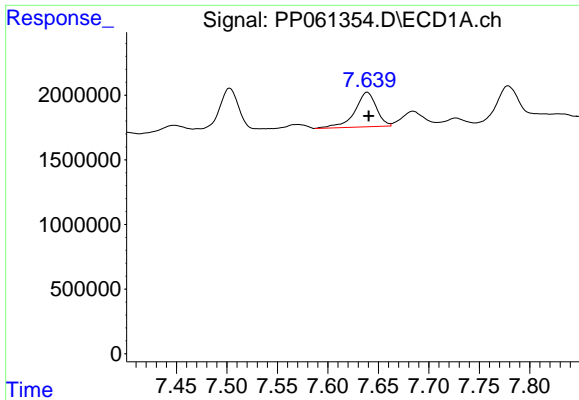
#31 AR-1260-1

R.T.: 7.380 min
 Delta R.T.: -0.002 min
 Response: 2366429
 Conc: 21.04 ng/ml



#31 AR-1260-1

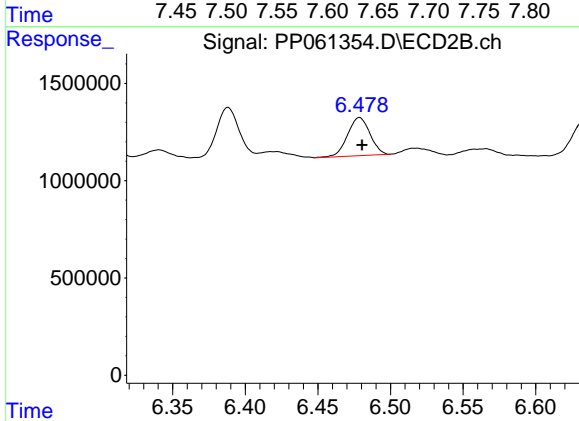
R.T.: 6.290 min
 Delta R.T.: 0.000 min
 Response: 3504790
 Conc: 43.08 ng/ml



#32 AR-1260-2

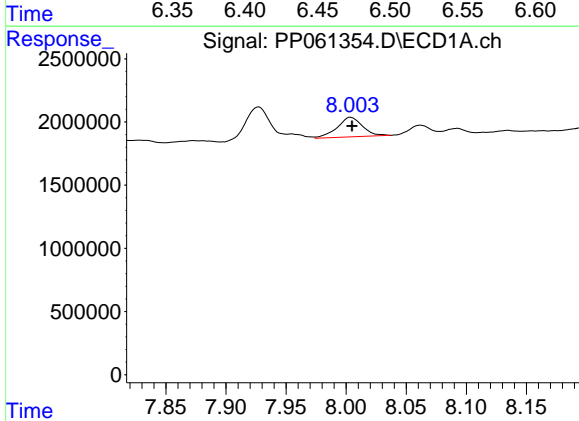
R.T.: 7.639 min
 Delta R.T.: -0.001 min
 Response: 3964312
 Conc: 30.64 ng/ml

Instrument :
 ECD_P
 ClientSampleId :



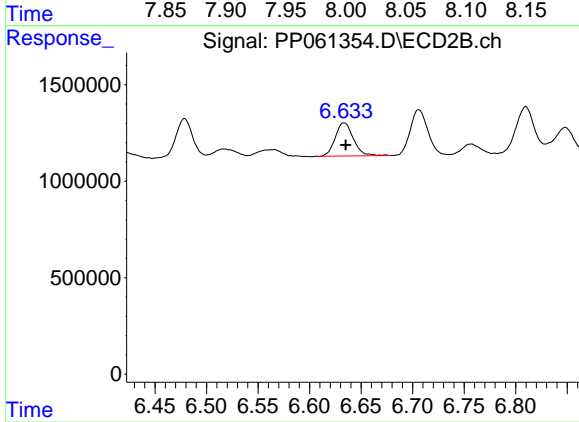
#32 AR-1260-2

R.T.: 6.479 min
 Delta R.T.: -0.002 min
 Response: 2108736
 Conc: 21.62 ng/ml



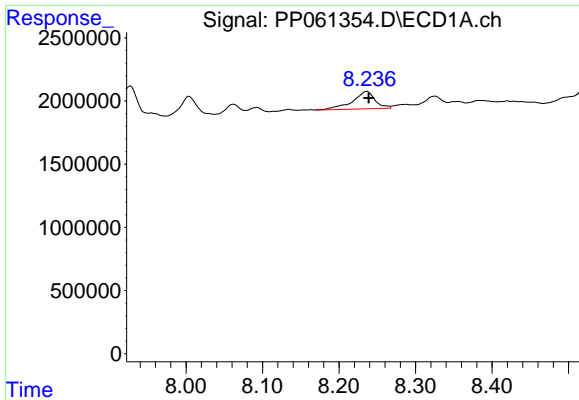
#33 AR-1260-3

R.T.: 8.004 min
 Delta R.T.: 0.000 min
 Response: 2277009
 Conc: 26.81 ng/ml



#33 AR-1260-3

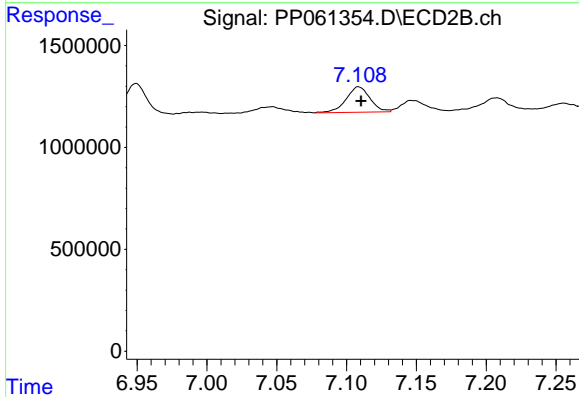
R.T.: 6.633 min
 Delta R.T.: -0.002 min
 Response: 2116792
 Conc: 22.87 ng/ml



#34 AR-1260-4

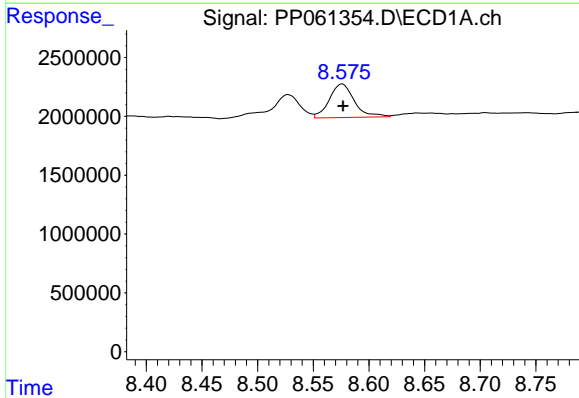
R.T.: 8.236 min
 Delta R.T.: -0.002 min
 Response: 2807438
 Conc: 27.77 ng/ml

Instrument :
 ECD_P
 ClientSampleId :



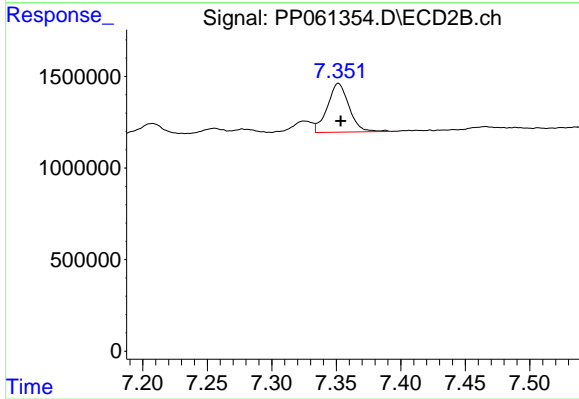
#34 AR-1260-4

R.T.: 7.109 min
 Delta R.T.: -0.002 min
 Response: 1481559
 Conc: 20.21 ng/ml



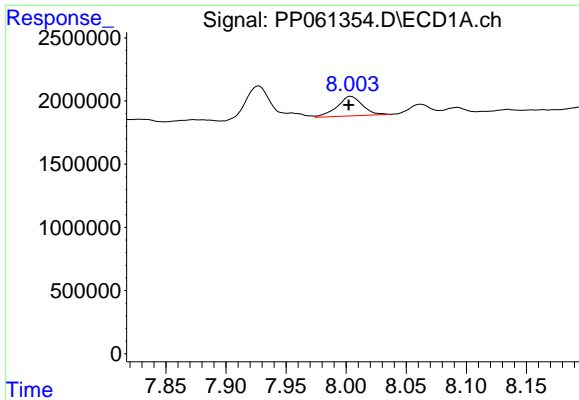
#35 AR-1260-5

R.T.: 8.576 min
 Delta R.T.: 0.000 min
 Response: 4461778
 Conc: 23.04 ng/ml



#35 AR-1260-5

R.T.: 7.352 min
 Delta R.T.: -0.002 min
 Response: 3098214
 Conc: 18.14 ng/ml

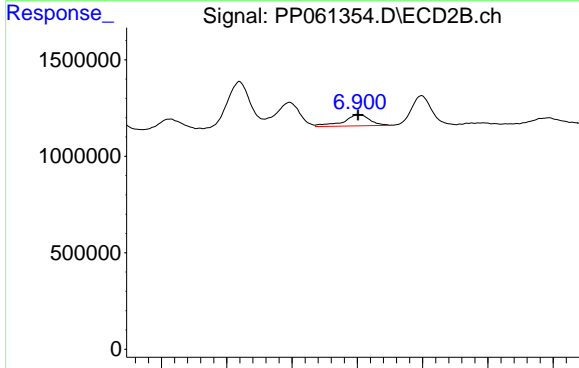


#36 AR-1262-1

R.T.: 8.004 min
 Delta R.T.: 0.002 min
 Response: 2277009
 Conc: 17.12 ng/ml

Instrument :
 ECD_P
 ClientSampleId :

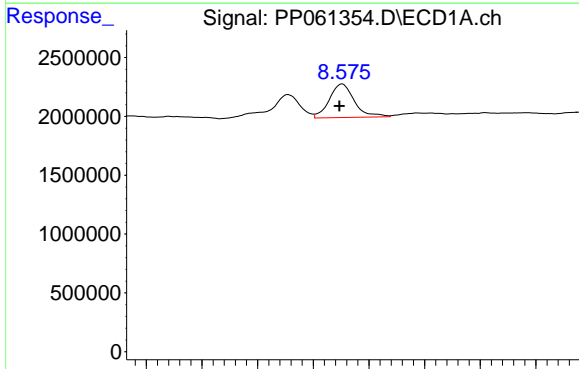
Time 7.85 7.90 7.95 8.00 8.05 8.10 8.15



#36 AR-1262-1

R.T.: 6.901 min
 Delta R.T.: 0.000 min
 Response: 817860
 Conc: 18.15 ng/ml

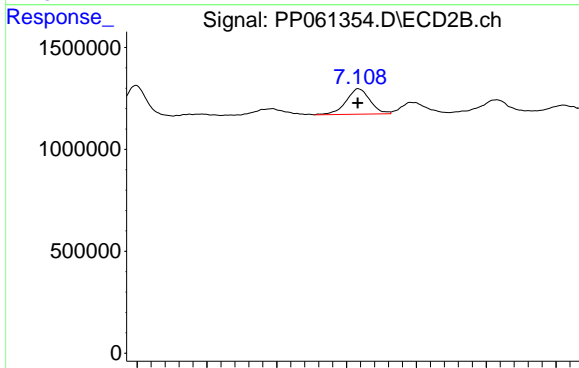
Time 6.75 6.80 6.85 6.90 6.95 7.00 7.05



#37 AR-1262-2

R.T.: 8.576 min
 Delta R.T.: 0.002 min
 Response: 4461778
 Conc: 19.09 ng/ml

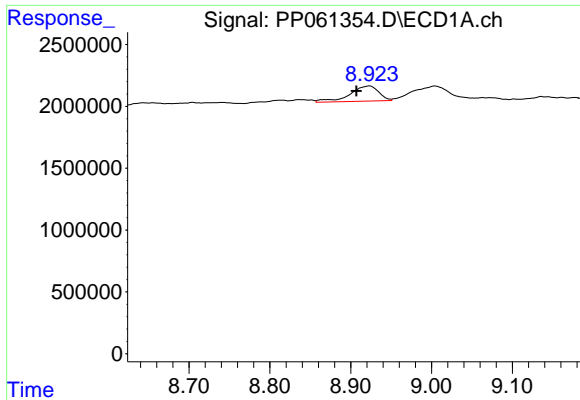
Time 8.40 8.45 8.50 8.55 8.60 8.65 8.70 8.75



#37 AR-1262-2

R.T.: 7.109 min
 Delta R.T.: 0.000 min
 Response: 1481559
 Conc: 14.80 ng/ml

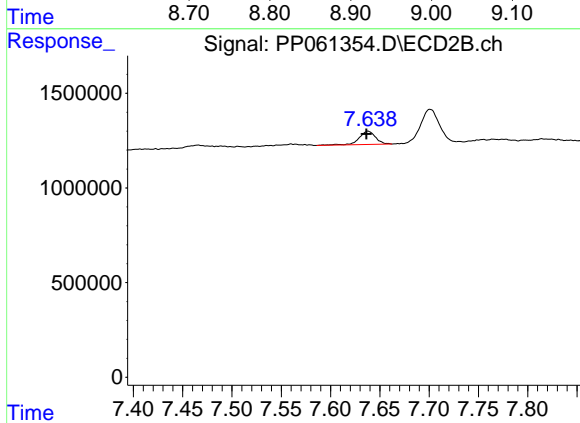
Time 6.95 7.00 7.05 7.10 7.15 7.20 7.25



#38 AR-1262-3

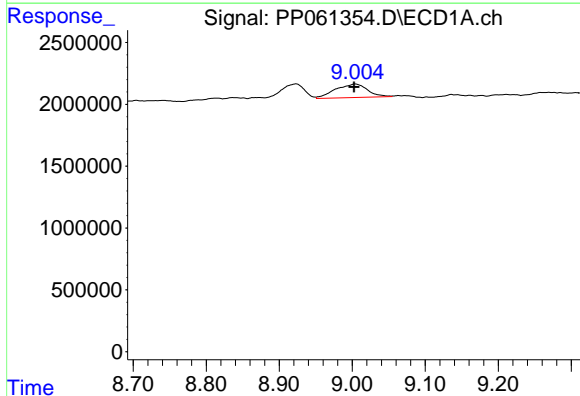
R.T.: 8.923 min
 Delta R.T.: 0.016 min
 Response: 3033801
 Conc: 19.11 ng/ml

Instrument :
 ECD_P
 ClientSampleId :



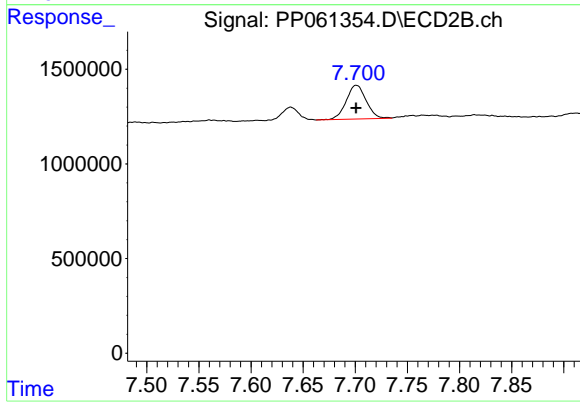
#38 AR-1262-3

R.T.: 7.638 min
 Delta R.T.: 0.002 min
 Response: 807932
 Conc: 10.15 ng/ml



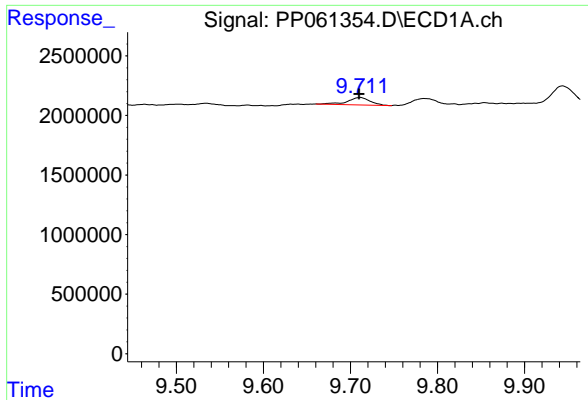
#39 AR-1262-4

R.T.: 9.004 min
 Delta R.T.: 0.002 min
 Response: 3323413
 Conc: 27.59 ng/ml



#39 AR-1262-4

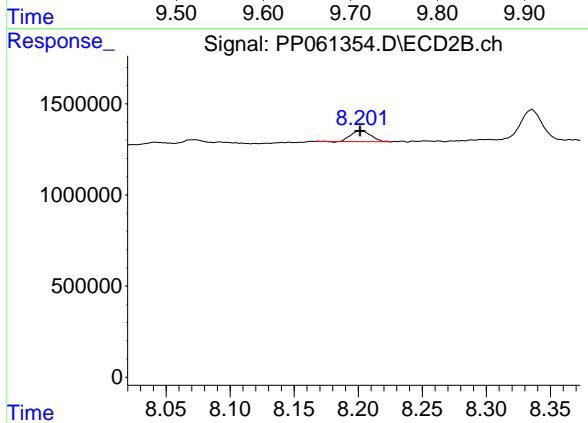
R.T.: 7.701 min
 Delta R.T.: 0.000 min
 Response: 2377921
 Conc: 16.46 ng/ml



#40 AR-1262-5

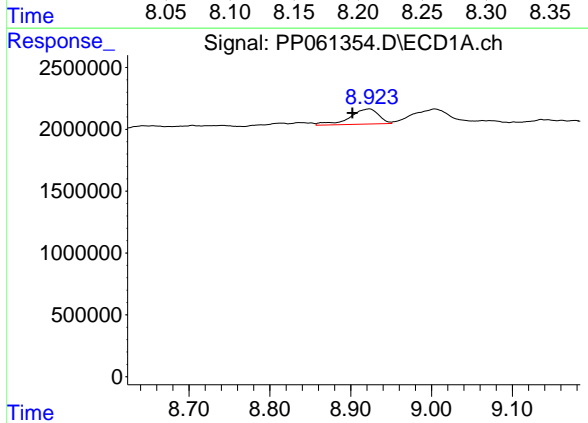
R.T.: 9.711 min
 Delta R.T.: 0.001 min
 Response: 1128089
 Conc: 13.87 ng/ml

Instrument :
 ECD_P
 ClientSampleId :



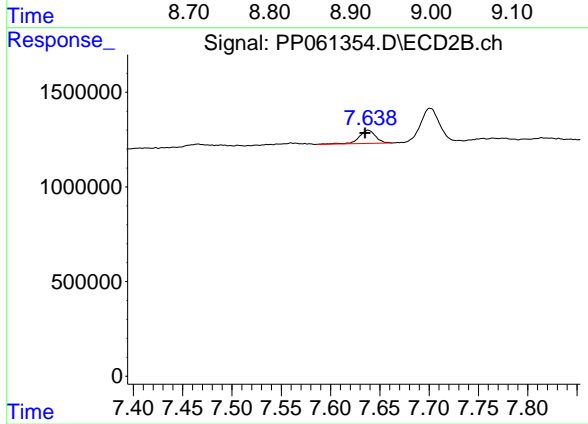
#40 AR-1262-5

R.T.: 8.202 min
 Delta R.T.: 0.000 min
 Response: 655829
 Conc: 9.49 ng/ml



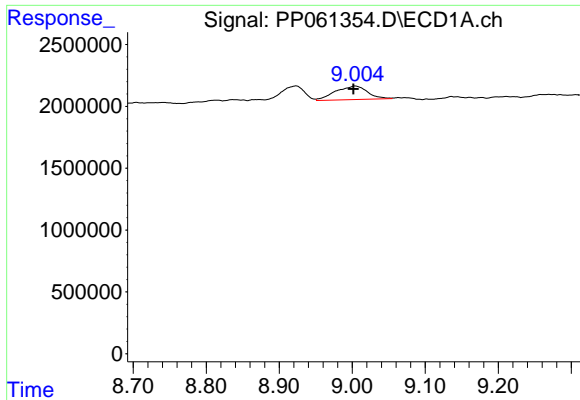
#41 AR-1268-1

R.T.: 8.923 min
 Delta R.T.: 0.021 min
 Response: 3033801
 Conc: 10.59 ng/ml



#41 AR-1268-1

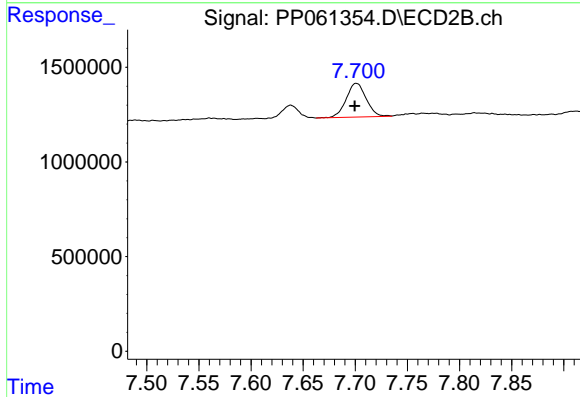
R.T.: 7.638 min
 Delta R.T.: 0.003 min
 Response: 807932
 Conc: 3.47 ng/ml



#42 AR-1268-2

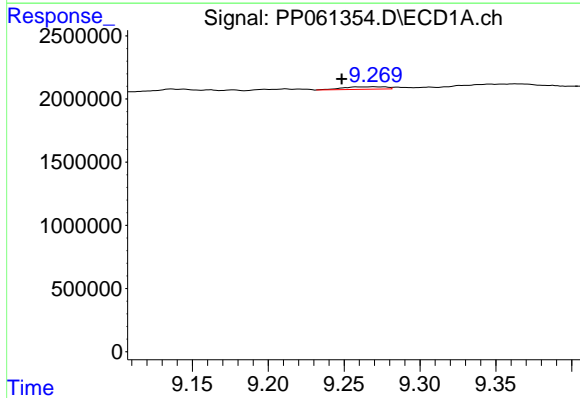
R.T.: 9.004 min
 Delta R.T.: 0.003 min
 Response: 3323413
 Conc: 12.71 ng/ml

Instrument :
 ECD_P
 ClientSampleId :



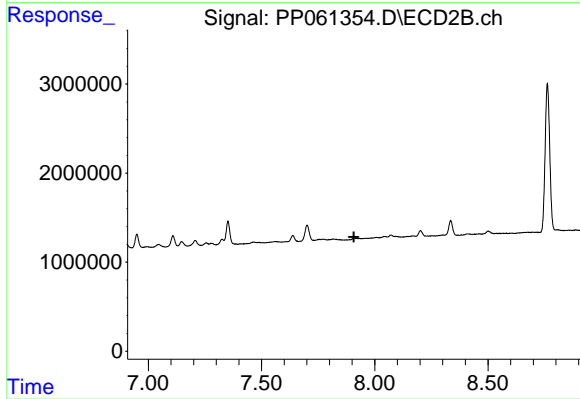
#42 AR-1268-2

R.T.: 7.701 min
 Delta R.T.: 0.002 min
 Response: 2377921
 Conc: 11.33 ng/ml



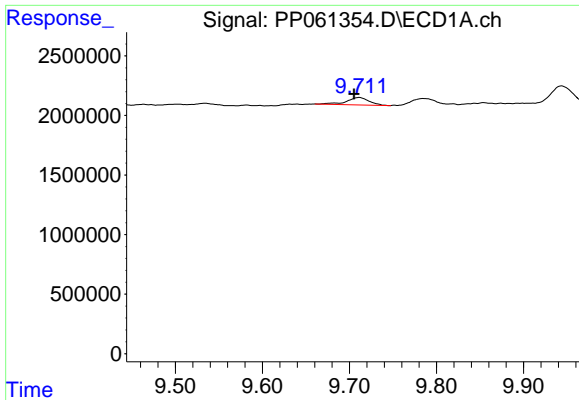
#43 AR-1268-3

R.T.: 9.270 min
 Delta R.T.: 0.021 min
 Response: 394849
 Conc: 1.73 ng/ml



#43 AR-1268-3

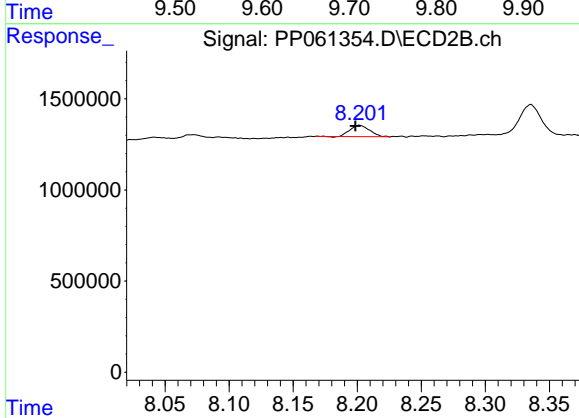
R.T.: 0.000 min
 Exp R.T. : 7.908 min
 Response: 0
 Conc: N.D.



#44 AR-1268-4

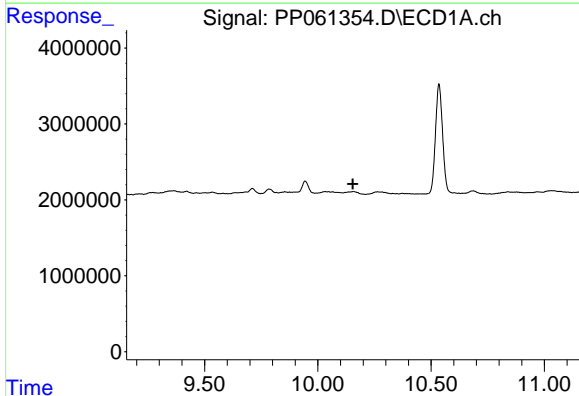
R.T.: 9.711 min
 Delta R.T.: 0.006 min
 Response: 1128089
 Conc: 12.46 ng/ml

Instrument :
 ECD_P
 ClientSampleId :



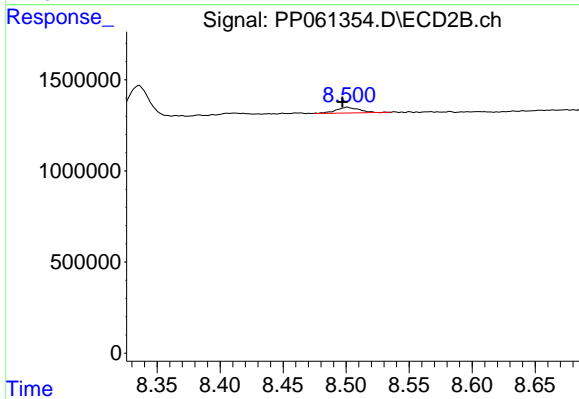
#44 AR-1268-4

R.T.: 8.202 min
 Delta R.T.: 0.003 min
 Response: 655829
 Conc: 8.48 ng/ml



#45 AR-1268-5

R.T.: 0.000 min
 Exp R.T. : 10.155 min
 Response: 0
 Conc: N.D.



#45 AR-1268-5

R.T.: 8.501 min
 Delta R.T.: 0.004 min
 Response: 405604
 Conc: 0.71 ng/ml