

Data Path : Z:\pestpcbsrv\HPCHEM1\ECD\_P\Data\PP103124\  
 Data File : PP068318.D  
 Signal(s) : Signal #1: ECD1A.ch Signal #2: ECD2B.ch  
 Acq On : 31 Oct 2024 13:57  
 Operator : YP\AJ  
 Sample : AR1660CCC500  
 Misc :  
 ALS Vial : 3 Sample Multiplier: 1

Instrument :  
 ECD\_P  
 ClientSampleId :  
 AR1660CCC500

Integration File signal 1: autoint1.e  
 Integration File signal 2: autoint2.e  
 Quant Time: Nov 01 00:37:38 2024  
 Quant Method : Z:\pestpcbsrv\HPCHEM1\ECD\_P\methods\PP100824.M  
 Quant Title : GC EXTRACTABLES  
 QLast Update : Wed Oct 09 05:48:32 2024  
 Response via : Initial Calibration  
 Integrator: ChemStation

Volume Inj. : 2 µl  
 Signal #1 Phase : ZB-MR1 Signal #2 Phase: ZB-MR2  
 Signal #1 Info : 30Mx0.32mmx 0.50µ Signal #2 Info : 30M x 0.32mm x 0.25µm

Compound	RT#1	RT#2	Resp#1	Resp#2	ng/ml	ng/ml
System Monitoring Compounds						
1) SA Tetrachlo...	4.762	4.054	47187730	47963873	50.978	47.470
2) SA Decachlor...	10.676	9.212	57370873	54113605	49.831	48.253
Target Compounds						
3) L1 AR-1016-1	5.926	5.161	16296072	15826676	492.825	452.355
4) L1 AR-1016-2	5.947	5.181	24384164	22395043	499.974	464.931
5) L1 AR-1016-3	6.011	5.361	17478398	12425214	554.659	461.261
6) L1 AR-1016-4	6.110	5.401	13786311	11279850	535.523	468.333
7) L1 AR-1016-5	6.404	5.619	12453866	14251269	460.114	468.640
8) L2 AR-1221-1	4.959	4.267	1587351	1843373	123.916	139.966
9) L2 AR-1221-2	5.050	4.358	4117507	2734428	435.228	274.507 #
10) L2 AR-1221-3	5.127	4.435	10984774	9804507	379.993	314.942
11) L3 AR-1232-1	5.127	4.435	10984774	9804507	480.527	402.931
12) L3 AR-1232-2	5.659	5.181	12548774	22395043	1064.987	1001.344
13) L3 AR-1232-3	5.947	5.361	24384164	12425214	1094.687	1040.306
14) L3 AR-1232-4	6.110	5.444	13786311	13280774	1221.387	1151.709
15) L3 AR-1232-5	6.199	5.619	11702999	14251269	1283.198	1059.550
16) L4 AR-1242-1	5.926	5.161	16296072	15826676	583.312	544.313
17) L4 AR-1242-2	5.947	5.181	24384164	22395043	600.082	557.816
18) L4 AR-1242-3	6.011	5.361	17478398	12425214	648.194	552.354
19) L4 AR-1242-4	6.110	5.444	13786311	13280774	642.704	559.480
20) L4 AR-1242-5	6.845	5.975	3597984	14069553	149.134	491.091 #
21) L5 AR-1248-1	5.926	5.161	16296072	15826676	760.685	698.325
22) L5 AR-1248-2	6.199	5.401	11702999	11279850	348.131	340.824
23) L5 AR-1248-3	6.404	5.444	12453866	13280774	340.033	385.233
24) L5 AR-1248-4	6.780	5.619	16077369	14251269	397.456	347.966
25) L5 AR-1248-5	6.845	6.016	3597984	3184138	90.718	85.039
26) L6 AR-1254-1	6.780	5.975	16077369	14069553	359.010	238.128 #
27) L6 AR-1254-2	6.996	6.122	10866094	10309707	164.394	196.509
28) L6 AR-1254-3	7.362	6.546	5980916	23746283	86.115	285.384 #
29) L6 AR-1254-4	7.646	6.760	4132075	2435919	82.800	50.460 #
30) L6 AR-1254-5	8.061	7.179	39285271	33116579	662.565	450.252 #
31) L7 AR-1260-1	7.527	6.662	25026661	26079136	463.253	457.834
32) L7 AR-1260-2	7.779	6.848	29514981	30610567	466.487	458.899
33) L7 AR-1260-3	8.141	7.006	25246804	29419239	486.931	461.832
34) L7 AR-1260-4	8.380	7.480	29032614	25818052	482.314	466.934
35) L7 AR-1260-5	8.717	7.718	51816568	56912317	481.065	465.356
36) L8 AR-1262-1	8.380	7.218	29032614	27232582	404.516	346.147
37) L8 AR-1262-2	8.717	7.480	51816568	25818052	426.192	363.829
38) L8 AR-1262-3	9.063	8.005	35767336	14911946	404.085	261.158 #
39) L8 AR-1262-4	9.135	8.069	13200542	43269481	188.728	430.815 #
40) L8 AR-1262-5	9.852	8.596	17235213	17675062	368.342	353.376
41) L9 AR-1268-1	9.063	8.005	35767336	14911946	234.312	93.702 #

Data Path : Z:\pestpcbsrv\HPCHEM1\ECD\_P\Data\PP103124\  
 Data File : PP068318.D  
 Signal(s) : Signal #1: ECD1A.ch Signal #2: ECD2B.ch  
 Acq On : 31 Oct 2024 13:57  
 Operator : YP\AJ  
 Sample : AR1660CCC500  
 Misc :  
 ALS Vial : 3 Sample Multiplier: 1

Instrument :  
 ECD\_P  
 ClientSampleId :  
 AR1660CCC500

Integration File signal 1: autoint1.e  
 Integration File signal 2: autoint2.e  
 Quant Time: Nov 01 00:37:38 2024  
 Quant Method : Z:\pestpcbsrv\HPCHEM1\ECD\_P\methods\PP100824.M  
 Quant Title : GC EXTRACTABLES  
 QLast Update : Wed Oct 09 05:48:32 2024  
 Response via : Initial Calibration  
 Integrator: ChemStation

Volume Inj. : 2 µl  
 Signal #1 Phase : ZB-MR1 Signal #2 Phase: ZB-MR2  
 Signal #1 Info : 30Mx0.32mmx 0.50µ Signal #2 Info : 30M x 0.32mm x 0.25µm

	Compound	RT#1	RT#2	Resp#1	Resp#2	ng/ml	ng/ml
42)	L9 AR-1268-2	9.145	8.069	11435355	43269481	83.717	302.190 #
43)	L9 AR-1268-3	9.404	8.288	752462	875387	6.223	6.865
44)	L9 AR-1268-4	9.852	8.596	17235213	17675062	339.143	312.966
45)	L9 AR-1268-5	10.302	8.923	5261183	5247293	14.087	13.880

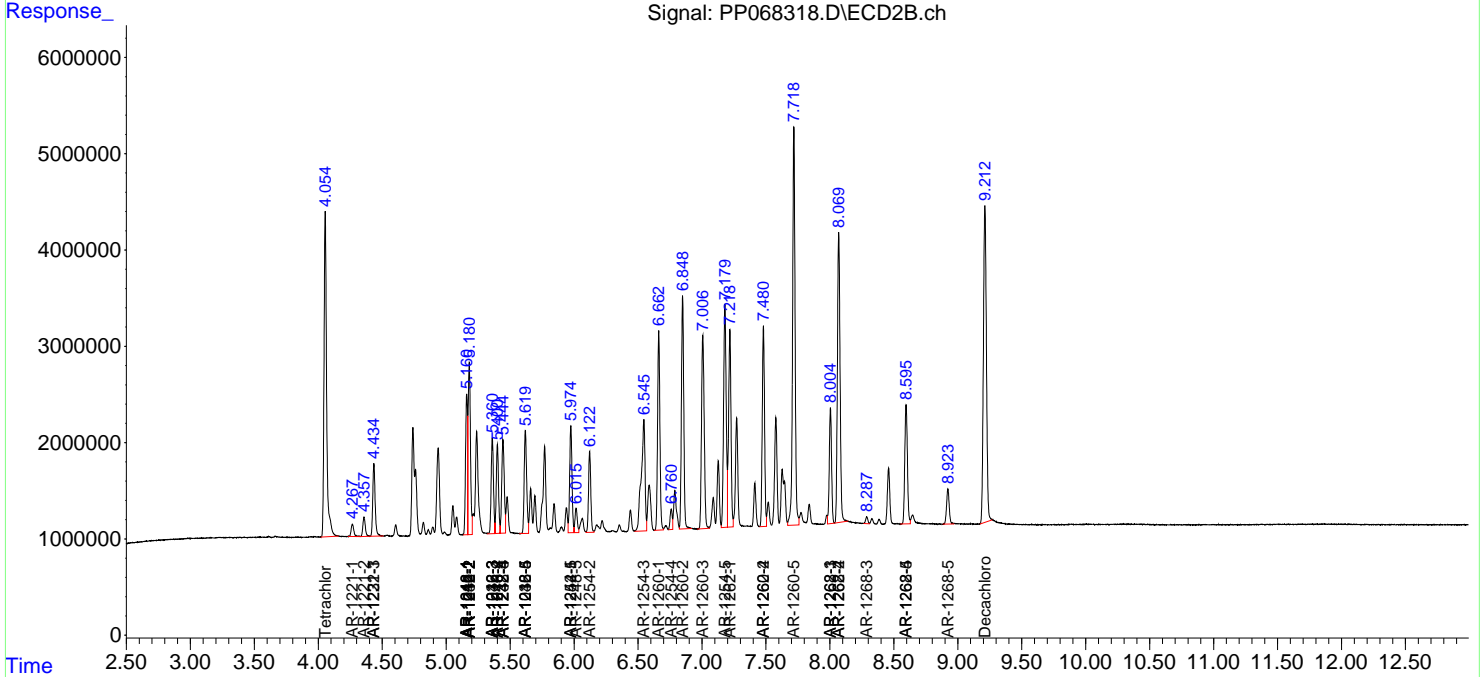
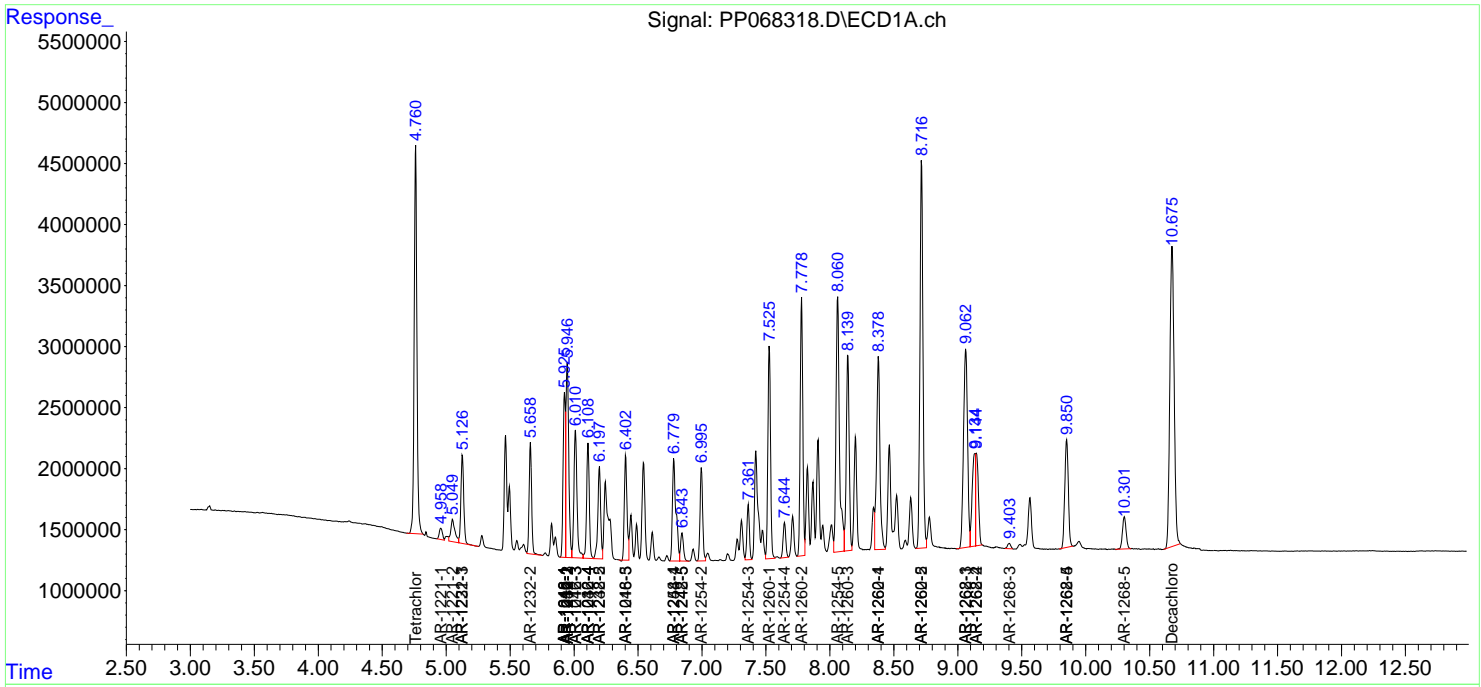
(f)=RT Delta > 1/2 Window (#)=Amounts differ by > 25% (m)=manual int.

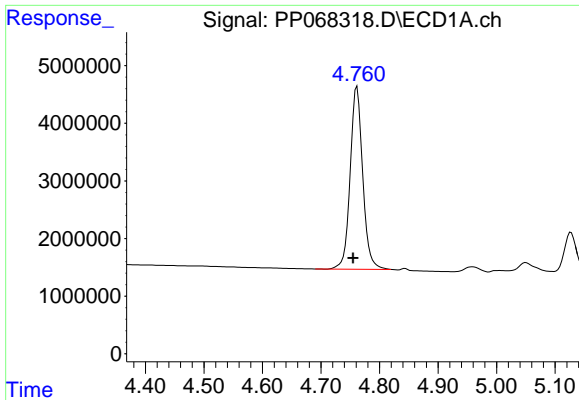
Data Path : Z:\pestpcbsrv\HPCHEM1\ECD\_P\Data\PP103124\  
 Data File : PP068318.D  
 Signal(s) : Signal #1: ECD1A.ch Signal #2: ECD2B.ch  
 Acq On : 31 Oct 2024 13:57  
 Operator : YP\AJ  
 Sample : AR1660CCC500  
 Misc :  
 ALS Vial : 3 Sample Multiplier: 1

Instrument :  
 ECD\_P  
 ClientSampleId :  
 AR1660CCC500

Integration File signal 1: autoint1.e  
 Integration File signal 2: autoint2.e  
 Quant Time: Nov 01 00:37:38 2024  
 Quant Method : Z:\pestpcbsrv\HPCHEM1\ECD\_P\methods\PP100824.M  
 Quant Title : GC EXTRACTABLES  
 QLast Update : Wed Oct 09 05:48:32 2024  
 Response via : Initial Calibration  
 Integrator: ChemStation

Volume Inj. : 2 µl  
 Signal #1 Phase : ZB-MR1 Signal #2 Phase: ZB-MR2  
 Signal #1 Info : 30Mx0.32mmx 0.50µ Signal #2 Info : 30M x 0.32mm x 0.25µm

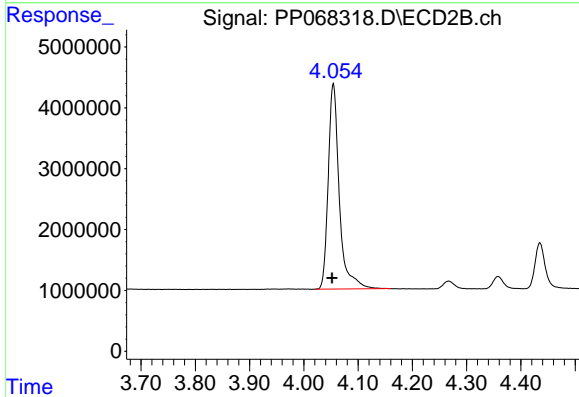




#1 Tetrachloro-m-xylene

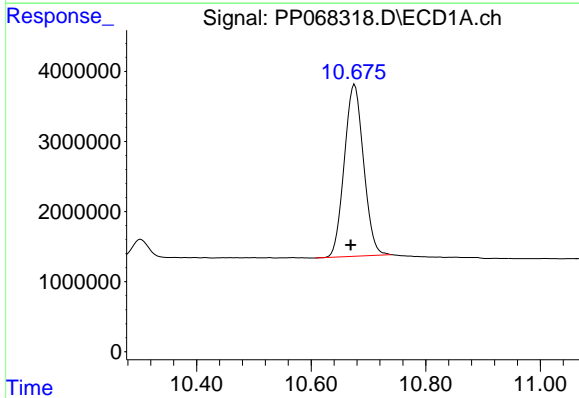
R.T.: 4.762 min  
Delta R.T.: 0.007 min  
Response: 47187730  
Conc: 50.98 ng/ml

Instrument :  
ECD\_P  
ClientSampleId :  
AR1660CCC500



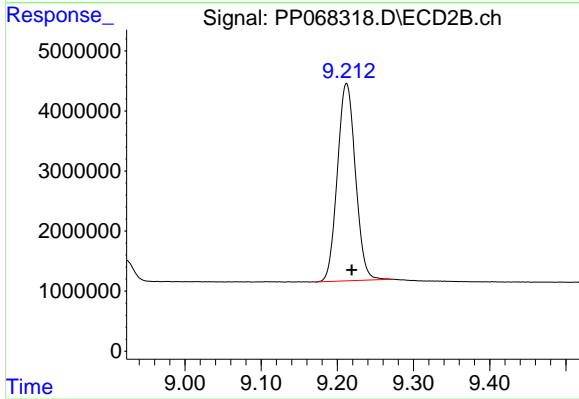
#1 Tetrachloro-m-xylene

R.T.: 4.054 min  
Delta R.T.: 0.002 min  
Response: 47963873  
Conc: 47.47 ng/ml



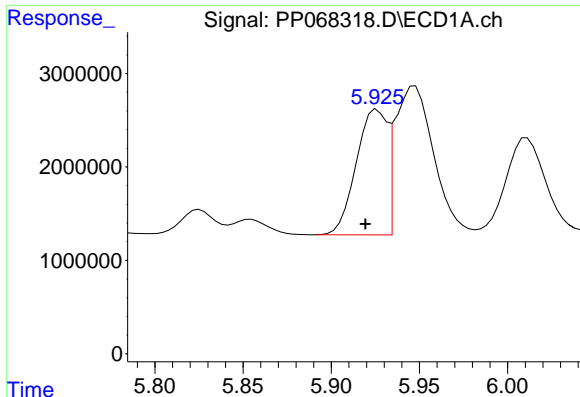
#2 Decachlorobiphenyl

R.T.: 10.676 min  
Delta R.T.: 0.007 min  
Response: 57370873  
Conc: 49.83 ng/ml



#2 Decachlorobiphenyl

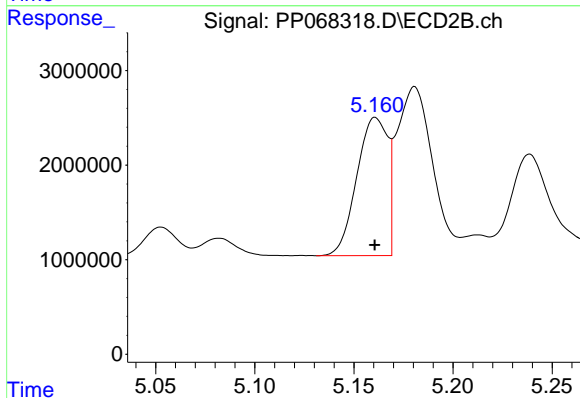
R.T.: 9.212 min  
Delta R.T.: -0.007 min  
Response: 54113605  
Conc: 48.25 ng/ml



#3 AR-1016-1

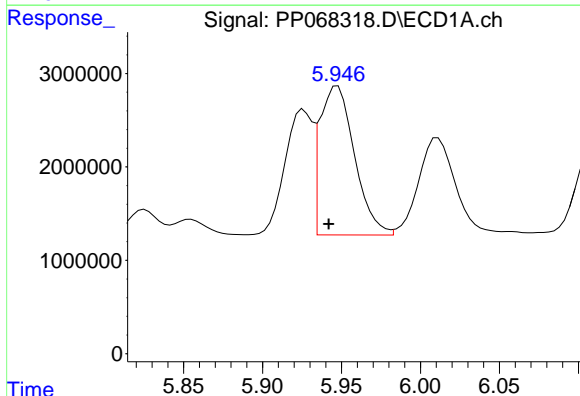
R.T.: 5.926 min  
 Delta R.T.: 0.007 min  
 Response: 16296072  
 Conc: 492.82 ng/ml

Instrument :  
 ECD\_P  
 ClientSampleId :  
 AR1660CCC500



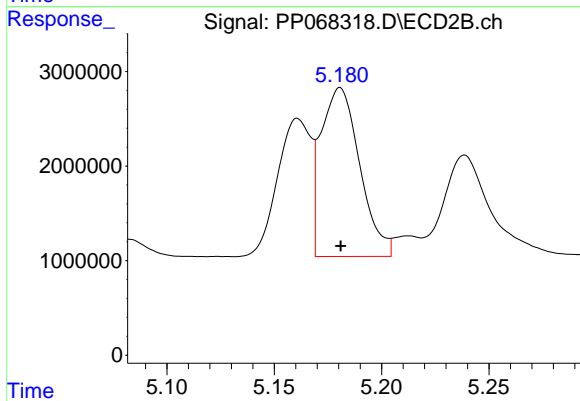
#3 AR-1016-1

R.T.: 5.161 min  
 Delta R.T.: 0.000 min  
 Response: 15826676  
 Conc: 452.36 ng/ml



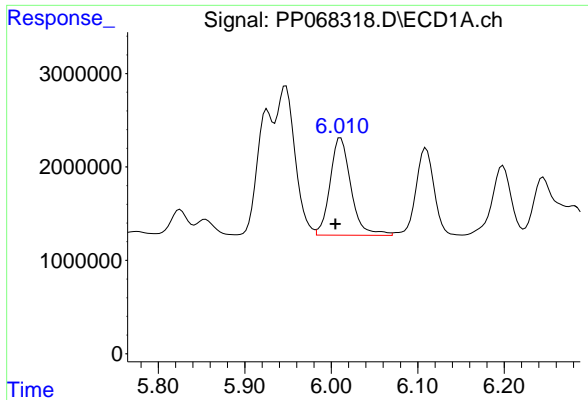
#4 AR-1016-2

R.T.: 5.947 min  
 Delta R.T.: 0.006 min  
 Response: 24384164  
 Conc: 499.97 ng/ml



#4 AR-1016-2

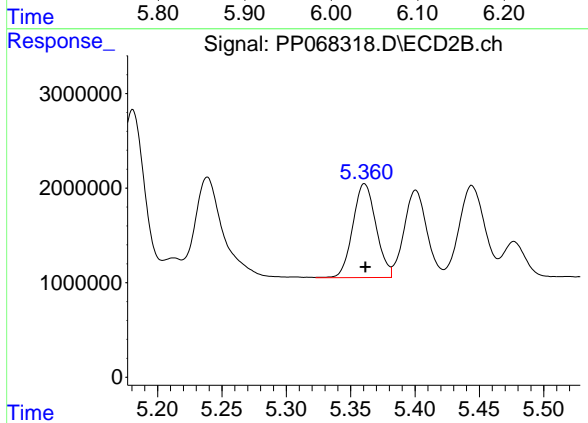
R.T.: 5.181 min  
 Delta R.T.: 0.000 min  
 Response: 22395043  
 Conc: 464.93 ng/ml



#5 AR-1016-3

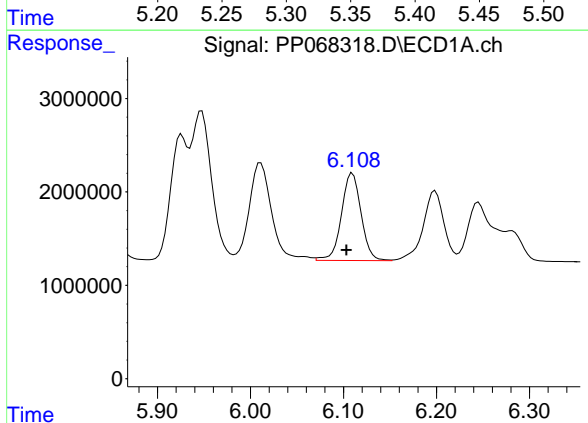
R.T.: 6.011 min  
 Delta R.T.: 0.006 min  
 Response: 17478398  
 Conc: 554.66 ng/ml

Instrument :  
 ECD\_P  
 ClientSampleId :  
 AR1660CCC500



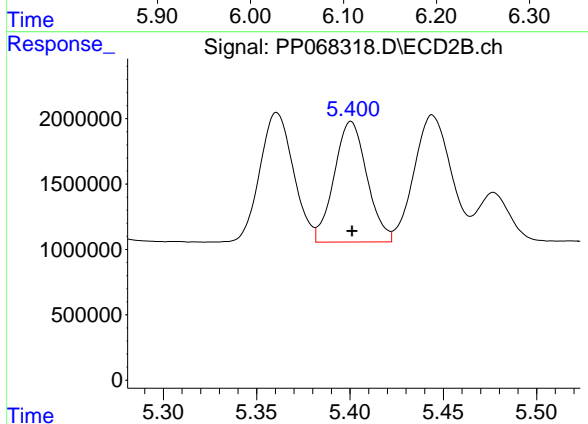
#5 AR-1016-3

R.T.: 5.361 min  
 Delta R.T.: 0.000 min  
 Response: 12425214  
 Conc: 461.26 ng/ml



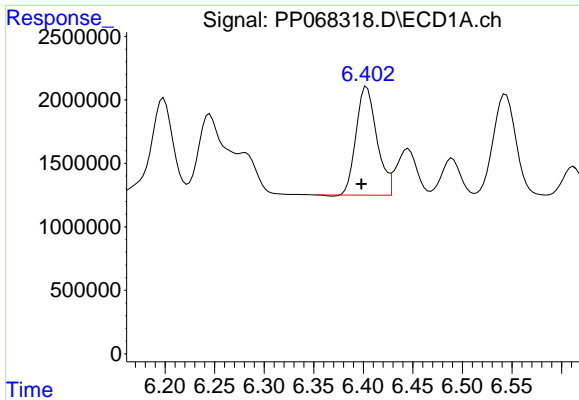
#6 AR-1016-4

R.T.: 6.110 min  
 Delta R.T.: 0.006 min  
 Response: 13786311  
 Conc: 535.52 ng/ml



#6 AR-1016-4

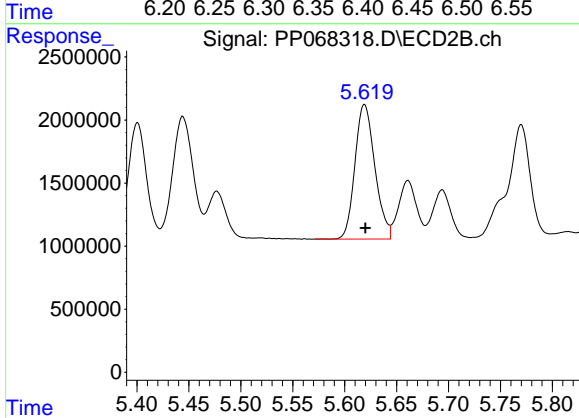
R.T.: 5.401 min  
 Delta R.T.: 0.000 min  
 Response: 11279850  
 Conc: 468.33 ng/ml



#7 AR-1016-5

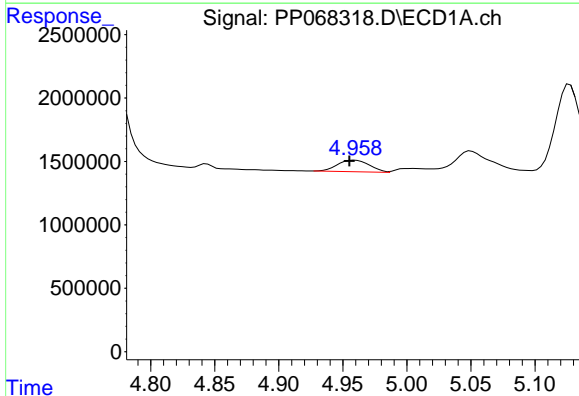
R.T.: 6.404 min  
 Delta R.T.: 0.005 min  
 Response: 12453866  
 Conc: 460.11 ng/ml

Instrument :  
 ECD\_P  
 ClientSampleId :  
 AR1660CCC500



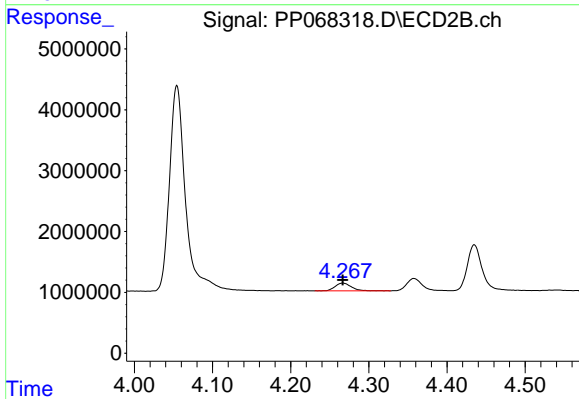
#7 AR-1016-5

R.T.: 5.619 min  
 Delta R.T.: -0.001 min  
 Response: 14251269  
 Conc: 468.64 ng/ml



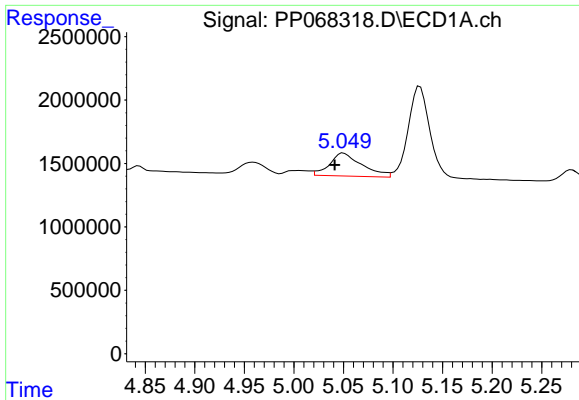
#8 AR-1221-1

R.T.: 4.959 min  
 Delta R.T.: 0.004 min  
 Response: 1587351  
 Conc: 123.92 ng/ml



#8 AR-1221-1

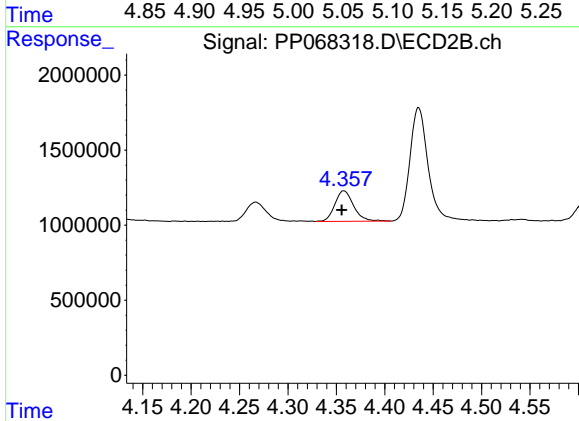
R.T.: 4.267 min  
 Delta R.T.: 0.000 min  
 Response: 1843373  
 Conc: 139.97 ng/ml



#9 AR-1221-2

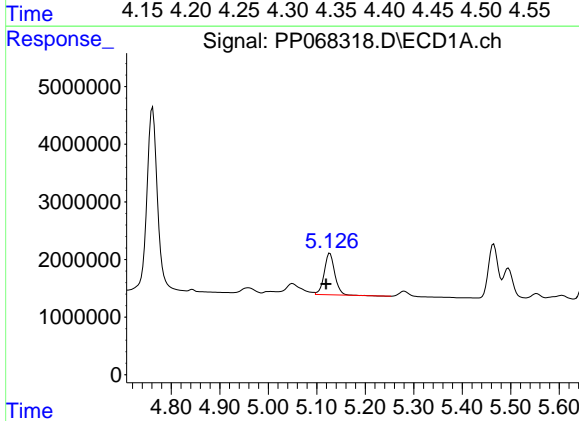
R.T.: 5.050 min  
 Delta R.T.: 0.009 min  
 Response: 4117507  
 Conc: 435.23 ng/ml

Instrument :  
 ECD\_P  
 ClientSampleId :  
 AR1660CCC500



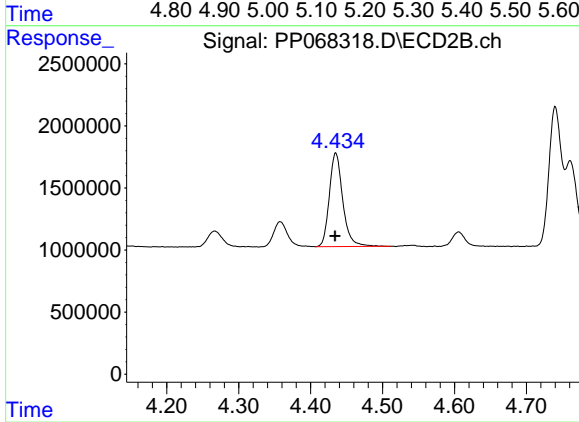
#9 AR-1221-2

R.T.: 4.358 min  
 Delta R.T.: 0.002 min  
 Response: 2734428  
 Conc: 274.51 ng/ml



#10 AR-1221-3

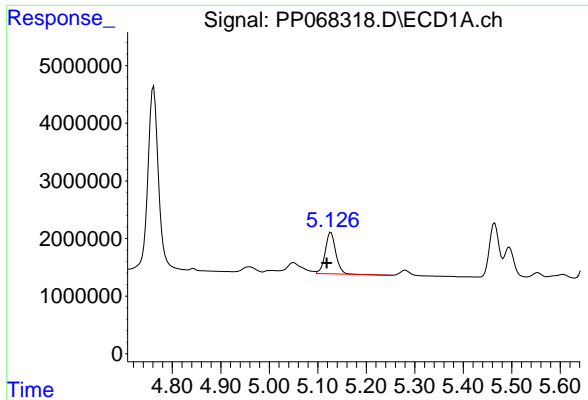
R.T.: 5.127 min  
 Delta R.T.: 0.008 min  
 Response: 10984774  
 Conc: 379.99 ng/ml



#10 AR-1221-3

R.T.: 4.435 min  
 Delta R.T.: 0.001 min  
 Response: 9804507  
 Conc: 314.94 ng/ml

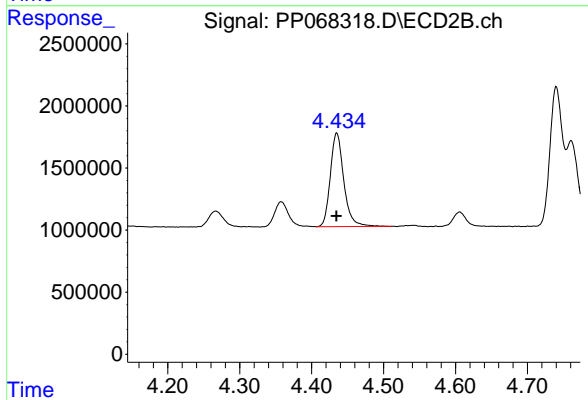




#11 AR-1232-1

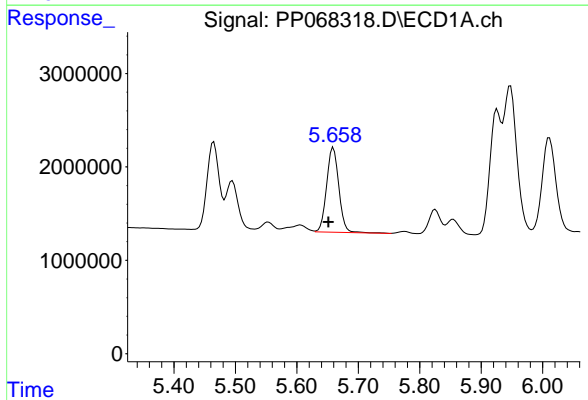
R.T.: 5.127 min  
 Delta R.T.: 0.009 min  
 Response: 10984774  
 Conc: 480.53 ng/ml

Instrument :  
 ECD\_P  
 ClientSampleId :  
 AR1660CCC500



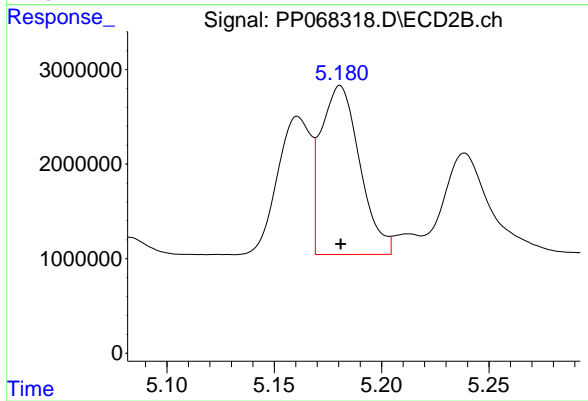
#11 AR-1232-1

R.T.: 4.435 min  
 Delta R.T.: 0.000 min  
 Response: 9804507  
 Conc: 402.93 ng/ml



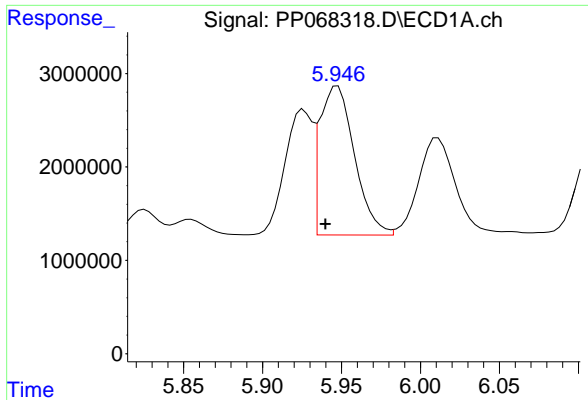
#12 AR-1232-2

R.T.: 5.659 min  
 Delta R.T.: 0.008 min  
 Response: 12548774  
 Conc: 1064.99 ng/ml



#12 AR-1232-2

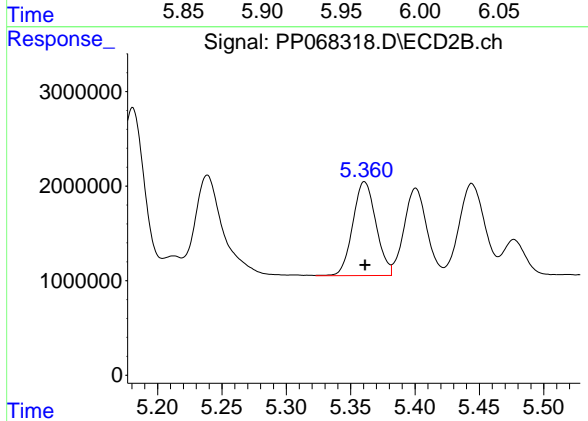
R.T.: 5.181 min  
 Delta R.T.: 0.000 min  
 Response: 22395043  
 Conc: 1001.34 ng/ml



#13 AR-1232-3

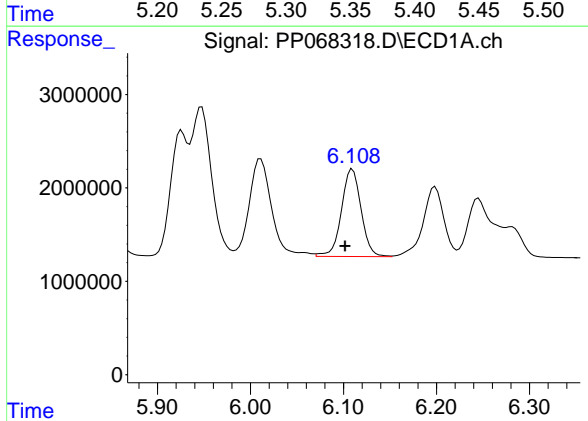
R.T.: 5.947 min  
 Delta R.T.: 0.008 min  
 Response: 24384164  
 Conc: 1094.69 ng/ml

Instrument :  
 ECD\_P  
 ClientSampleId :  
 AR1660CCC500



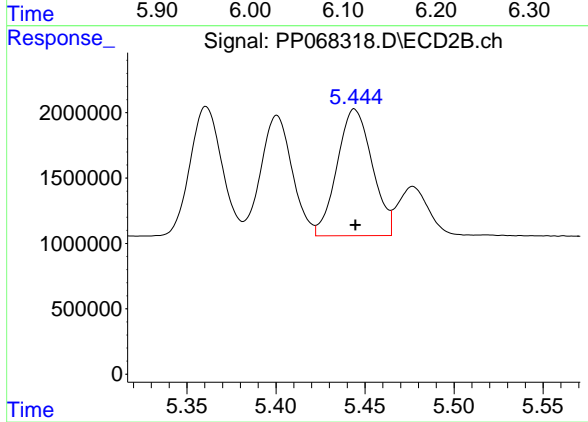
#13 AR-1232-3

R.T.: 5.361 min  
 Delta R.T.: 0.000 min  
 Response: 12425214  
 Conc: 1040.31 ng/ml



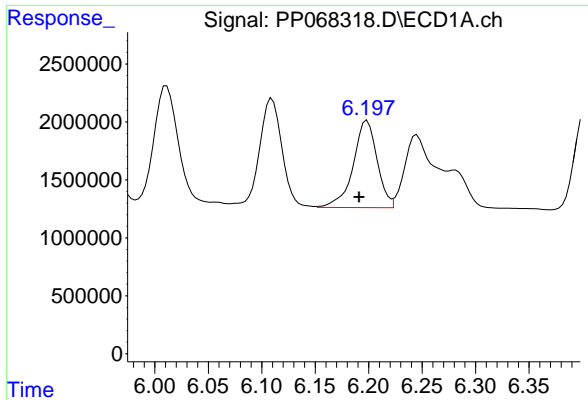
#14 AR-1232-4

R.T.: 6.110 min  
 Delta R.T.: 0.008 min  
 Response: 13786311  
 Conc: 1221.39 ng/ml



#14 AR-1232-4

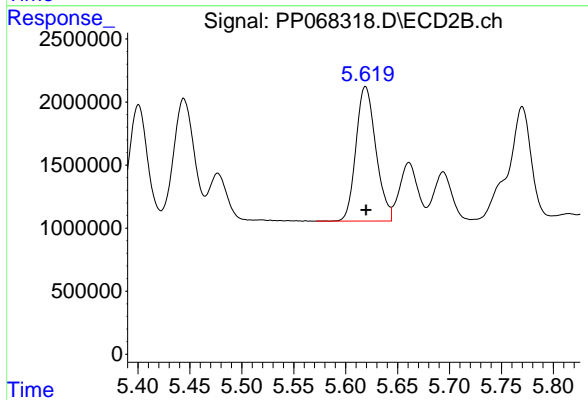
R.T.: 5.444 min  
 Delta R.T.: 0.000 min  
 Response: 13280774  
 Conc: 1151.71 ng/ml



#15 AR-1232-5

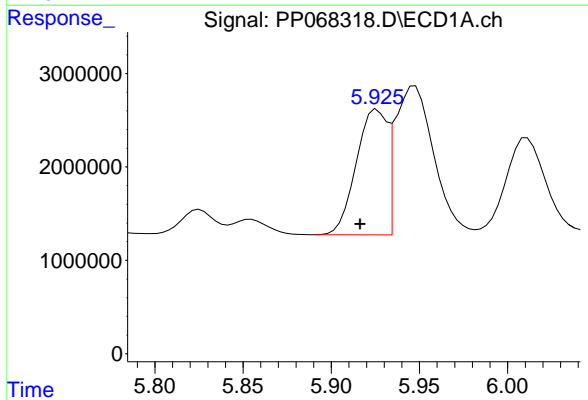
R.T.: 6.199 min  
 Delta R.T.: 0.007 min  
 Response: 11702999  
 Conc: 1283.20 ng/ml

Instrument :  
 ECD\_P  
 ClientSampleId :  
 AR1660CCC500



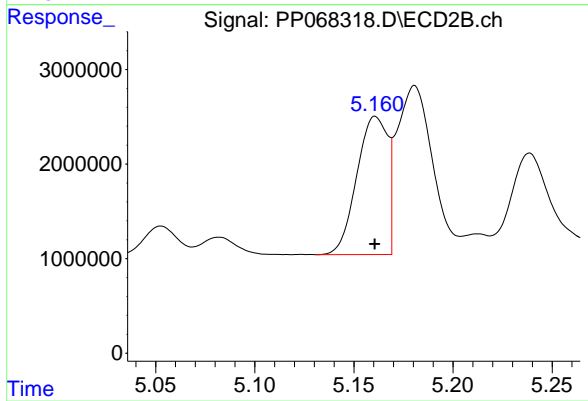
#15 AR-1232-5

R.T.: 5.619 min  
 Delta R.T.: 0.000 min  
 Response: 14251269  
 Conc: 1059.55 ng/ml



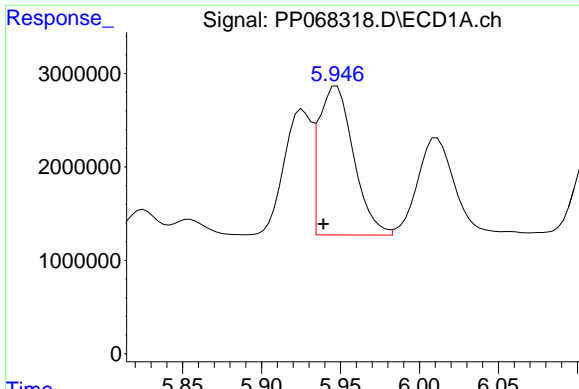
#16 AR-1242-1

R.T.: 5.926 min  
 Delta R.T.: 0.010 min  
 Response: 16296072  
 Conc: 583.31 ng/ml



#16 AR-1242-1

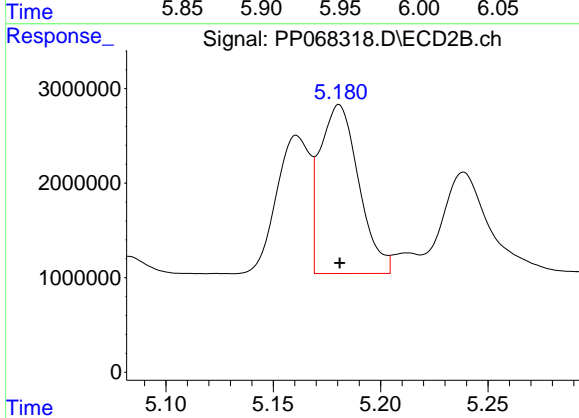
R.T.: 5.161 min  
 Delta R.T.: 0.000 min  
 Response: 15826676  
 Conc: 544.31 ng/ml



#17 AR-1242-2

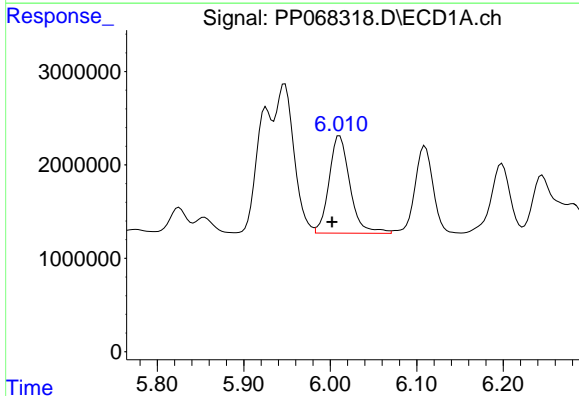
R.T.: 5.947 min  
 Delta R.T.: 0.008 min  
 Response: 24384164  
 Conc: 600.08 ng/ml

Instrument :  
 ECD\_P  
 ClientSampleId :  
 AR1660CCC500



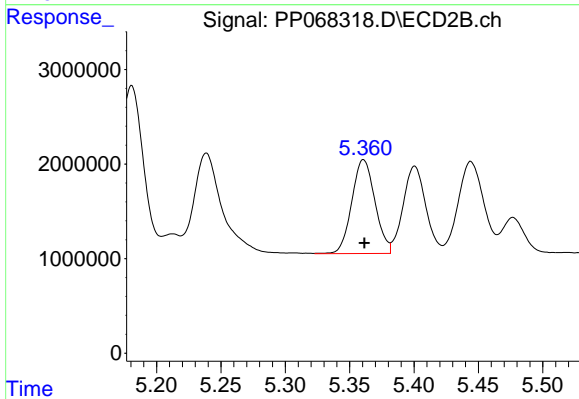
#17 AR-1242-2

R.T.: 5.181 min  
 Delta R.T.: 0.000 min  
 Response: 22395043  
 Conc: 557.82 ng/ml



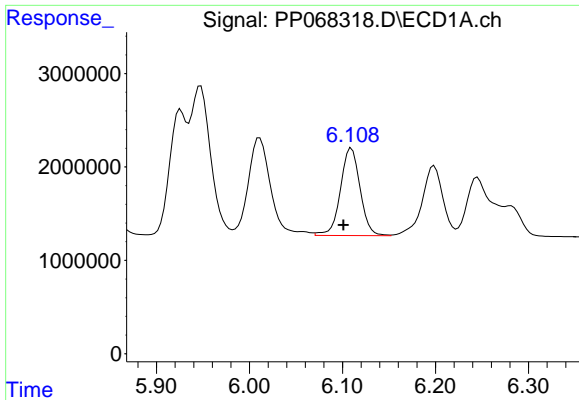
#18 AR-1242-3

R.T.: 6.011 min  
 Delta R.T.: 0.009 min  
 Response: 17478398  
 Conc: 648.19 ng/ml



#18 AR-1242-3

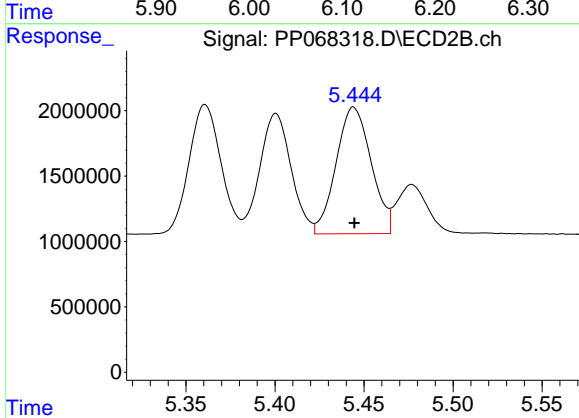
R.T.: 5.361 min  
 Delta R.T.: 0.000 min  
 Response: 12425214  
 Conc: 552.35 ng/ml



#19 AR-1242-4

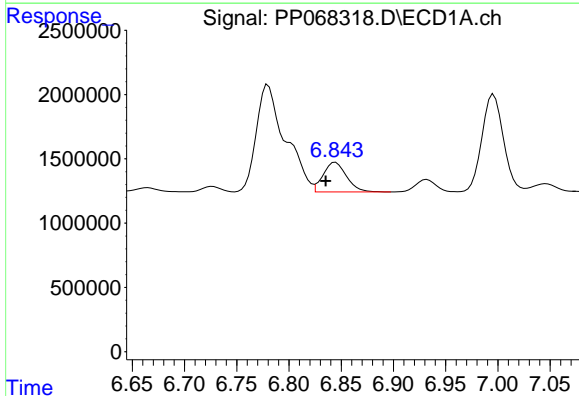
R.T.: 6.110 min  
 Delta R.T.: 0.009 min  
 Response: 13786311  
 Conc: 642.70 ng/ml

Instrument :  
 ECD\_P  
 ClientSampleId :  
 AR1660CCC500



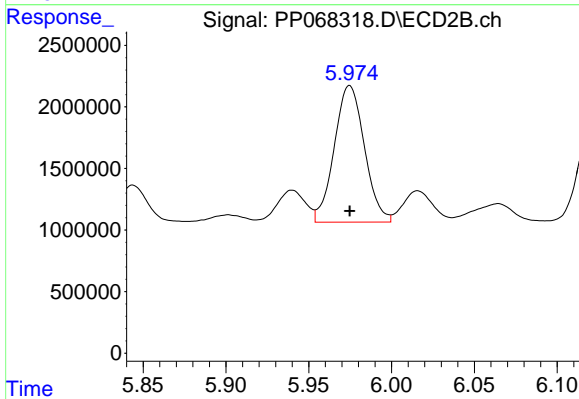
#19 AR-1242-4

R.T.: 5.444 min  
 Delta R.T.: 0.000 min  
 Response: 13280774  
 Conc: 559.48 ng/ml



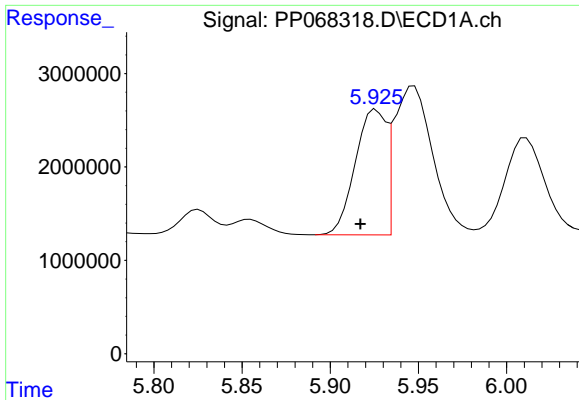
#20 AR-1242-5

R.T.: 6.845 min  
 Delta R.T.: 0.009 min  
 Response: 3597984  
 Conc: 149.13 ng/ml



#20 AR-1242-5

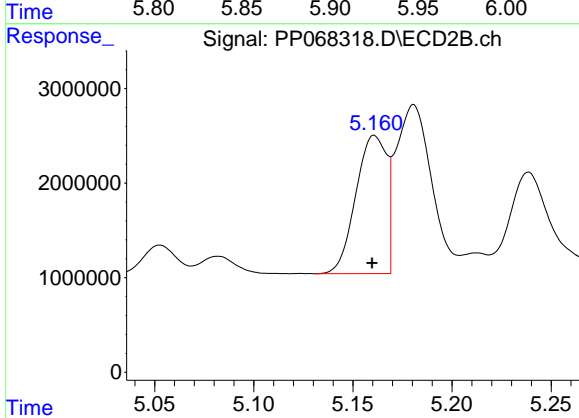
R.T.: 5.975 min  
 Delta R.T.: 0.000 min  
 Response: 14069553  
 Conc: 491.09 ng/ml



#21 AR-1248-1

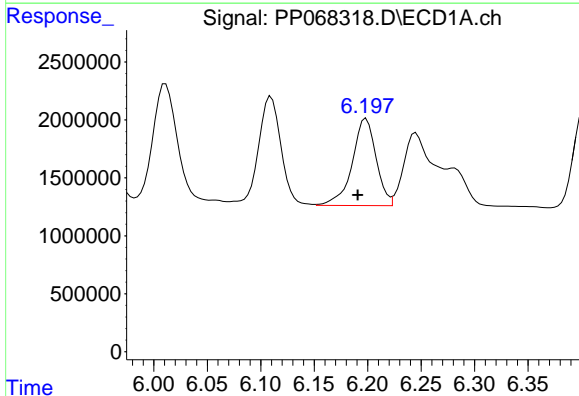
R.T.: 5.926 min  
 Delta R.T.: 0.009 min  
 Response: 16296072  
 Conc: 760.69 ng/ml

Instrument :  
 ECD\_P  
 ClientSampleId :  
 AR1660CCC500



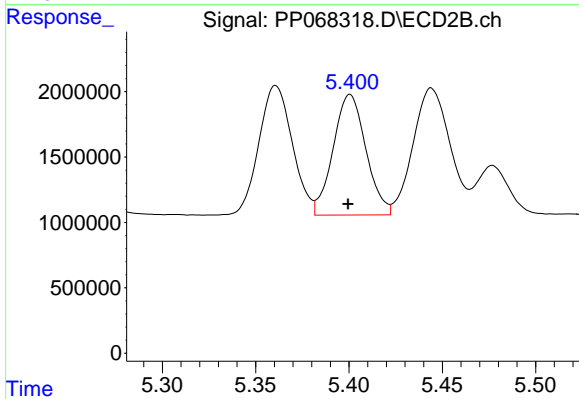
#21 AR-1248-1

R.T.: 5.161 min  
 Delta R.T.: 0.001 min  
 Response: 15826676  
 Conc: 698.32 ng/ml



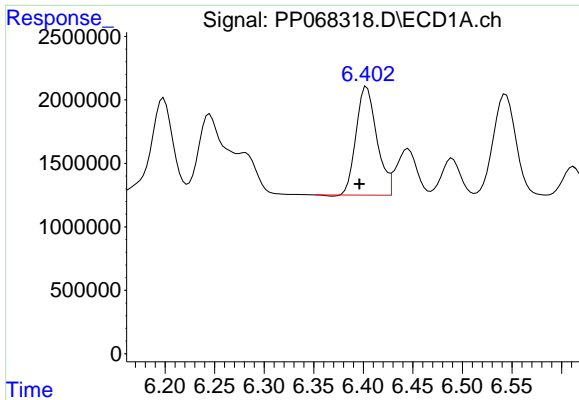
#22 AR-1248-2

R.T.: 6.199 min  
 Delta R.T.: 0.008 min  
 Response: 11702999  
 Conc: 348.13 ng/ml



#22 AR-1248-2

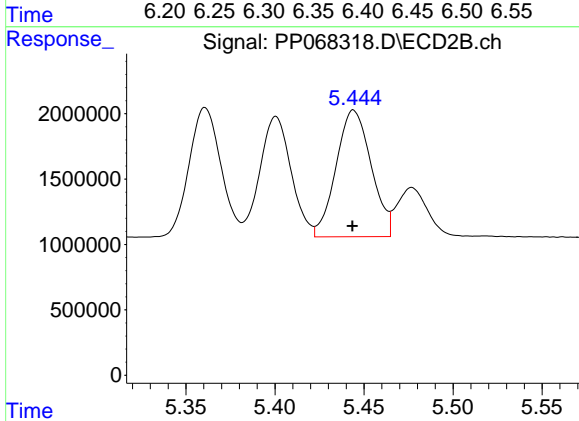
R.T.: 5.401 min  
 Delta R.T.: 0.000 min  
 Response: 11279850  
 Conc: 340.82 ng/ml



#23 AR-1248-3

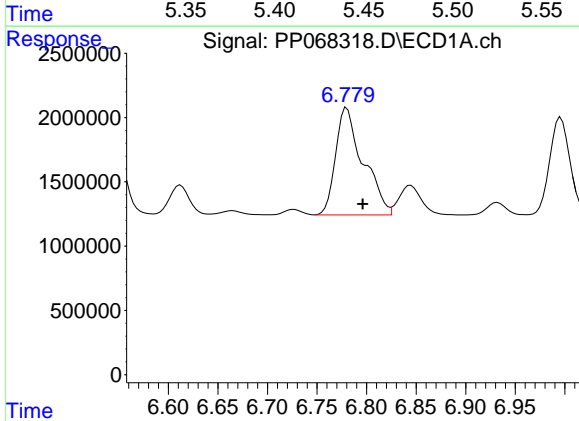
R.T.: 6.404 min  
 Delta R.T.: 0.007 min  
 Response: 12453866  
 Conc: 340.03 ng/ml

Instrument :  
 ECD\_P  
 ClientSampleId :  
 AR1660CCC500



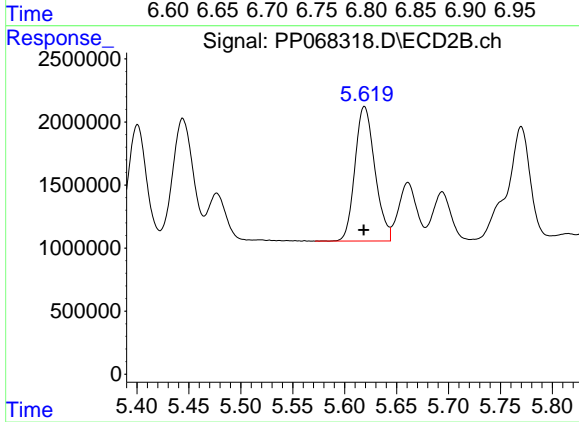
#23 AR-1248-3

R.T.: 5.444 min  
 Delta R.T.: 0.000 min  
 Response: 13280774  
 Conc: 385.23 ng/ml



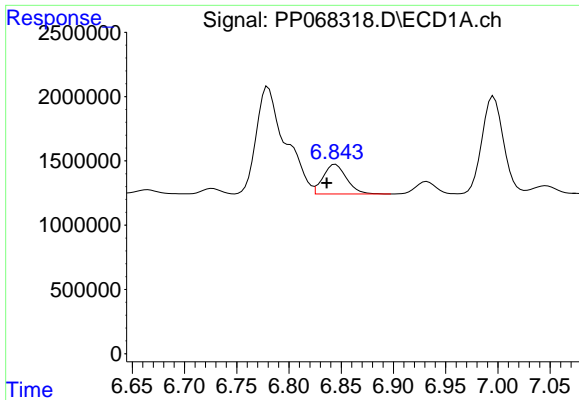
#24 AR-1248-4

R.T.: 6.780 min  
 Delta R.T.: -0.016 min  
 Response: 16077369  
 Conc: 397.46 ng/ml



#24 AR-1248-4

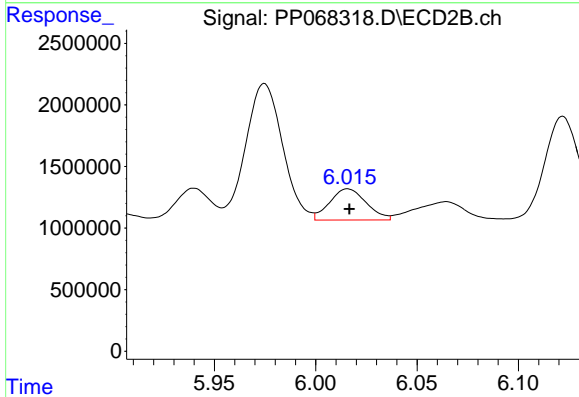
R.T.: 5.619 min  
 Delta R.T.: 0.000 min  
 Response: 14251269  
 Conc: 347.97 ng/ml



#25 AR-1248-5

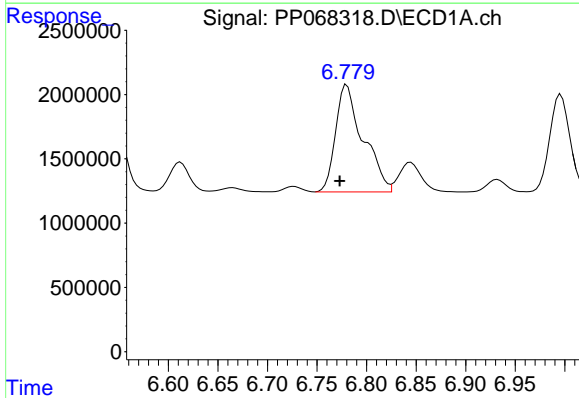
R.T.: 6.845 min  
 Delta R.T.: 0.008 min  
 Response: 3597984  
 Conc: 90.72 ng/ml

Instrument :  
 ECD\_P  
 ClientSampleId :  
 AR1660CCC500



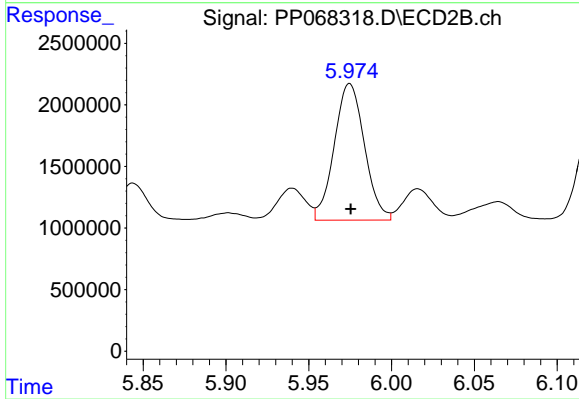
#25 AR-1248-5

R.T.: 6.016 min  
 Delta R.T.: 0.000 min  
 Response: 3184138  
 Conc: 85.04 ng/ml



#26 AR-1254-1

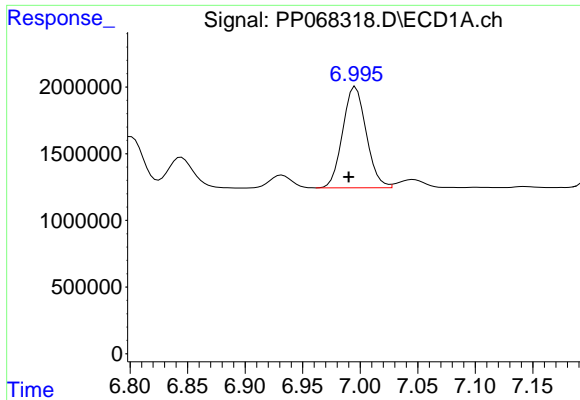
R.T.: 6.780 min  
 Delta R.T.: 0.007 min  
 Response: 16077369  
 Conc: 359.01 ng/ml



#26 AR-1254-1

R.T.: 5.975 min  
 Delta R.T.: 0.000 min  
 Response: 14069553  
 Conc: 238.13 ng/ml

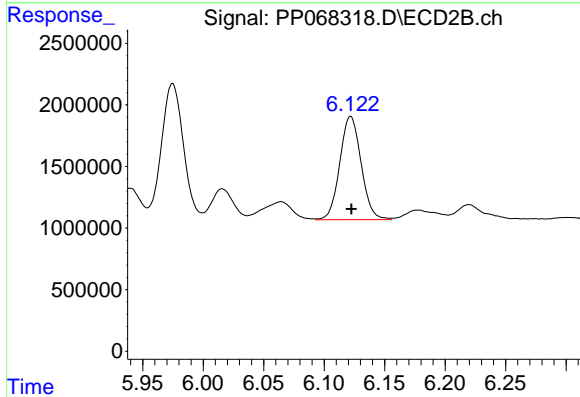




#27 AR-1254-2

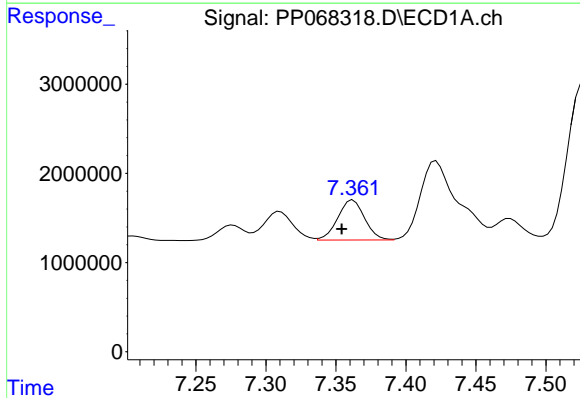
R.T.: 6.996 min  
 Delta R.T.: 0.006 min  
 Response: 10866094  
 Conc: 164.39 ng/ml

Instrument :  
 ECD\_P  
 ClientSampleId :  
 AR1660CCC500



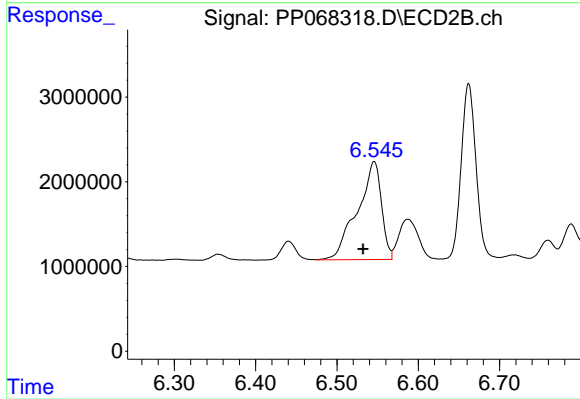
#27 AR-1254-2

R.T.: 6.122 min  
 Delta R.T.: 0.000 min  
 Response: 10309707  
 Conc: 196.51 ng/ml



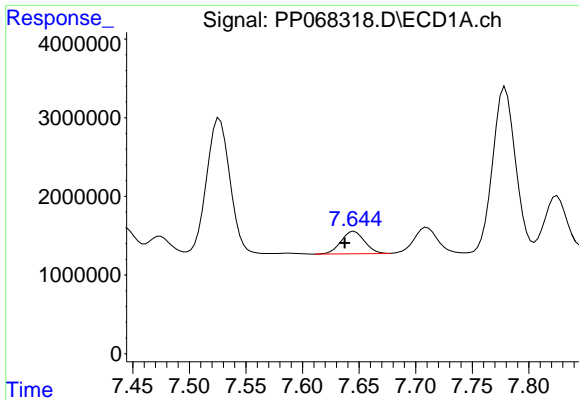
#28 AR-1254-3

R.T.: 7.362 min  
 Delta R.T.: 0.008 min  
 Response: 5980916  
 Conc: 86.11 ng/ml



#28 AR-1254-3

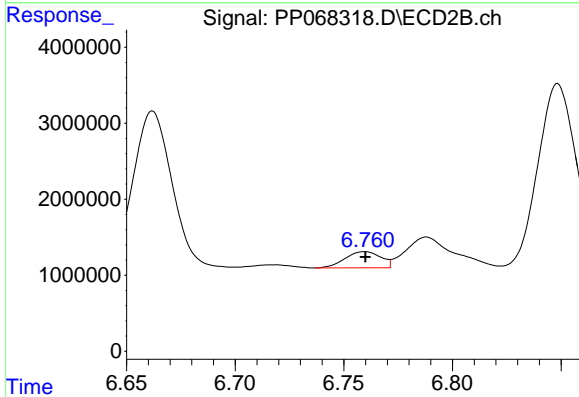
R.T.: 6.546 min  
 Delta R.T.: 0.014 min  
 Response: 23746283  
 Conc: 285.38 ng/ml



#29 AR-1254-4

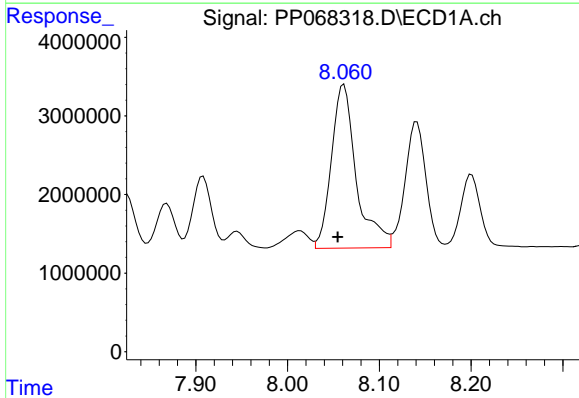
R.T.: 7.646 min  
 Delta R.T.: 0.008 min  
 Response: 4132075  
 Conc: 82.80 ng/ml

Instrument :  
 ECD\_P  
 ClientSampleId :  
 AR1660CCC500



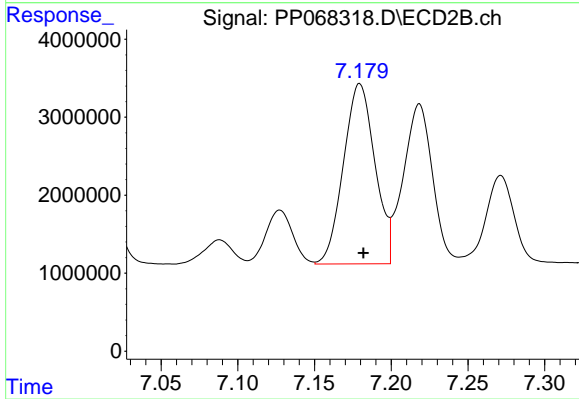
#29 AR-1254-4

R.T.: 6.760 min  
 Delta R.T.: 0.000 min  
 Response: 2435919  
 Conc: 50.46 ng/ml



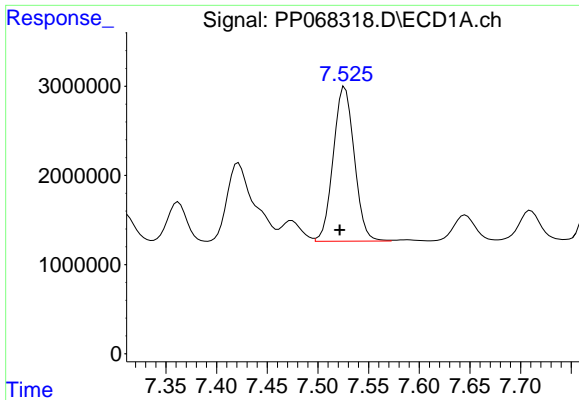
#30 AR-1254-5

R.T.: 8.061 min  
 Delta R.T.: 0.007 min  
 Response: 39285271  
 Conc: 662.56 ng/ml



#30 AR-1254-5

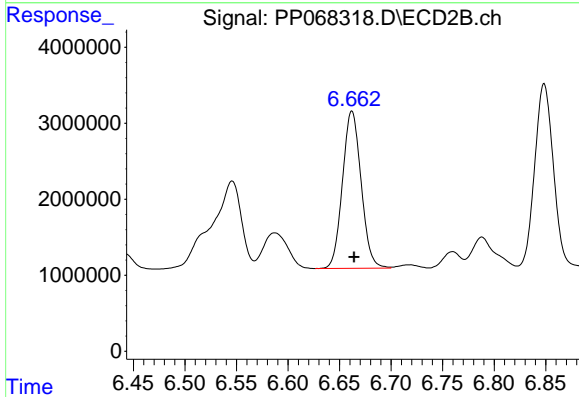
R.T.: 7.179 min  
 Delta R.T.: -0.002 min  
 Response: 33116579  
 Conc: 450.25 ng/ml



#31 AR-1260-1

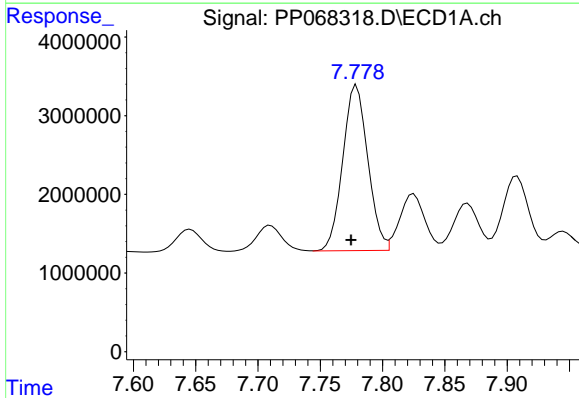
R.T.: 7.527 min  
 Delta R.T.: 0.005 min  
 Response: 25026661  
 Conc: 463.25 ng/ml

Instrument :  
 ECD\_P  
 ClientSampleId :  
 AR1660CCC500



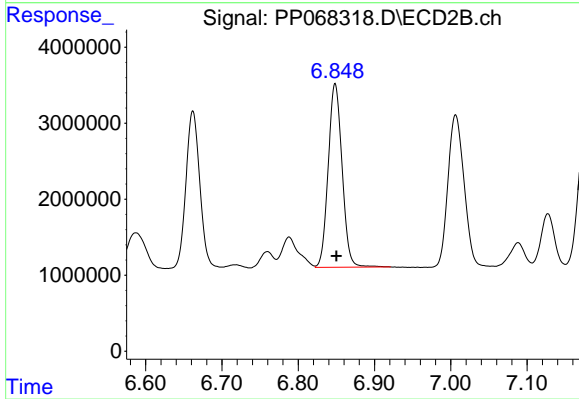
#31 AR-1260-1

R.T.: 6.662 min  
 Delta R.T.: -0.002 min  
 Response: 26079136  
 Conc: 457.83 ng/ml



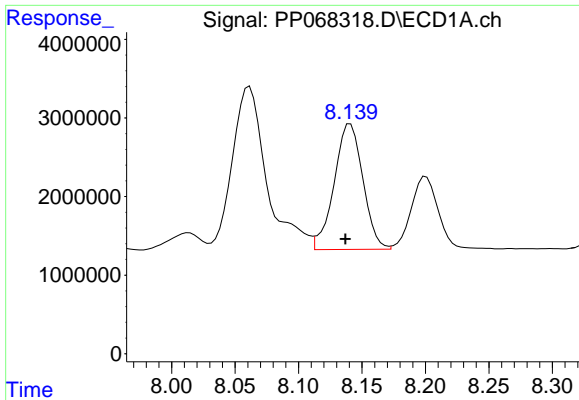
#32 AR-1260-2

R.T.: 7.779 min  
 Delta R.T.: 0.005 min  
 Response: 29514981  
 Conc: 466.49 ng/ml



#32 AR-1260-2

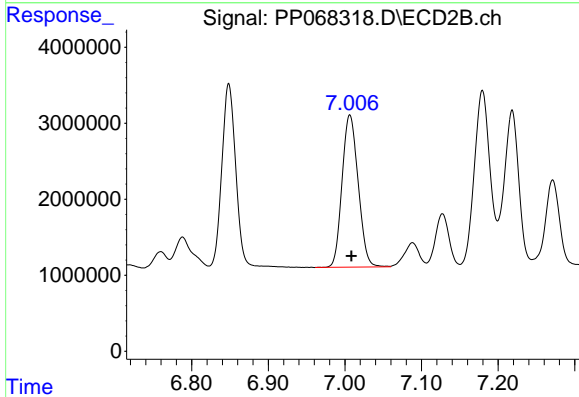
R.T.: 6.848 min  
 Delta R.T.: -0.002 min  
 Response: 30610567  
 Conc: 458.90 ng/ml



#33 AR-1260-3

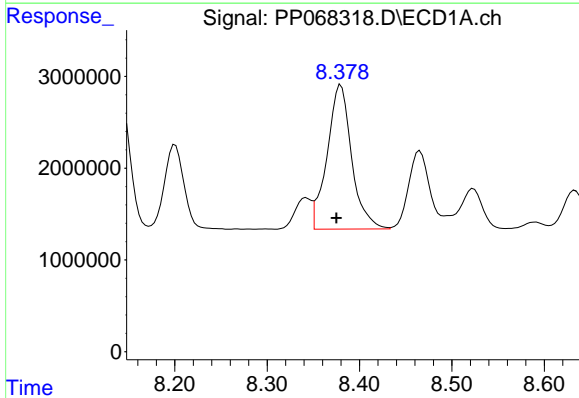
R.T.: 8.141 min  
 Delta R.T.: 0.004 min  
 Response: 25246804  
 Conc: 486.93 ng/ml

Instrument :  
 ECD\_P  
 ClientSampleId :  
 AR1660CCC500



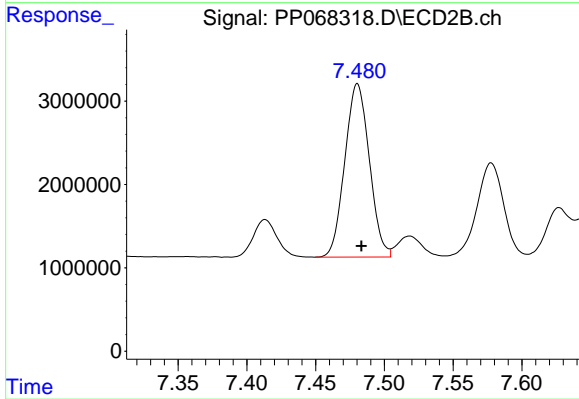
#33 AR-1260-3

R.T.: 7.006 min  
 Delta R.T.: -0.002 min  
 Response: 29419239  
 Conc: 461.83 ng/ml



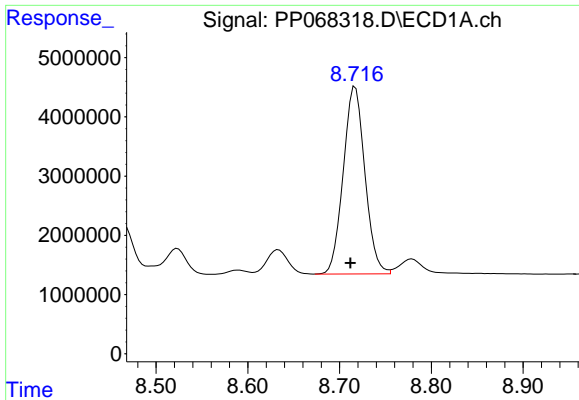
#34 AR-1260-4

R.T.: 8.380 min  
 Delta R.T.: 0.005 min  
 Response: 29032614  
 Conc: 482.31 ng/ml



#34 AR-1260-4

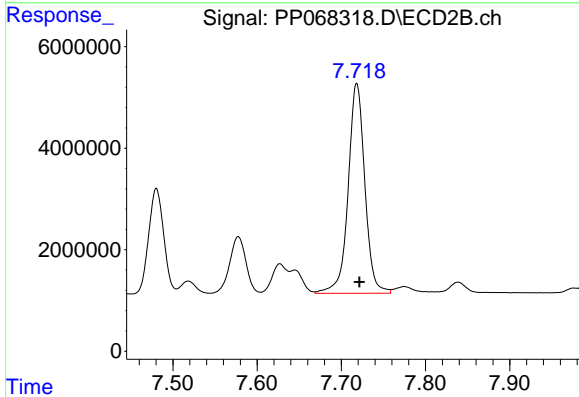
R.T.: 7.480 min  
 Delta R.T.: -0.003 min  
 Response: 25818052  
 Conc: 466.93 ng/ml



#35 AR-1260-5

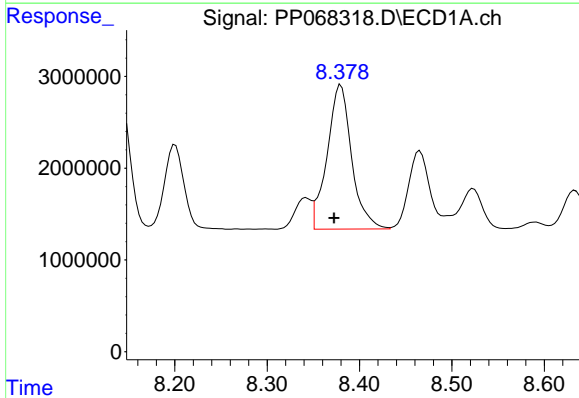
R.T.: 8.717 min  
 Delta R.T.: 0.005 min  
 Response: 51816568  
 Conc: 481.07 ng/ml

Instrument :  
 ECD\_P  
 ClientSampleId :  
 AR1660CCC500



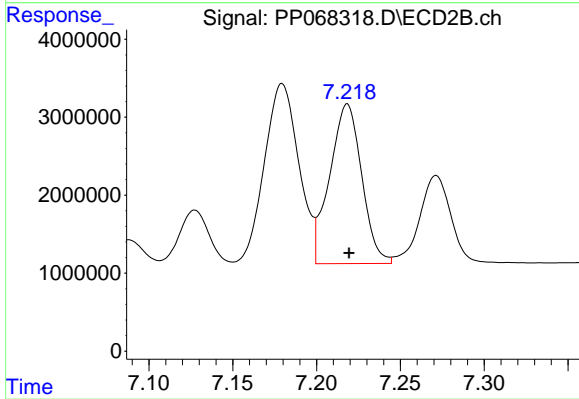
#35 AR-1260-5

R.T.: 7.718 min  
 Delta R.T.: -0.003 min  
 Response: 56912317  
 Conc: 465.36 ng/ml



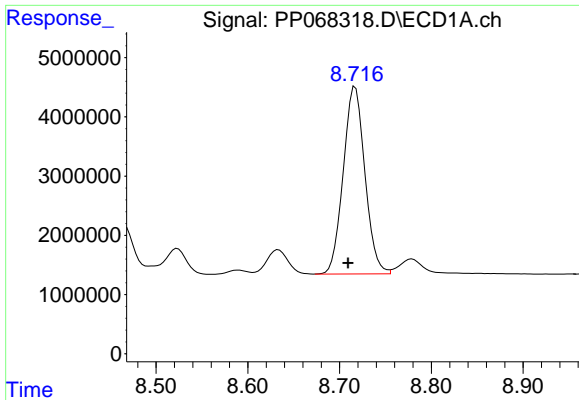
#36 AR-1262-1

R.T.: 8.380 min  
 Delta R.T.: 0.007 min  
 Response: 29032614  
 Conc: 404.52 ng/ml



#36 AR-1262-1

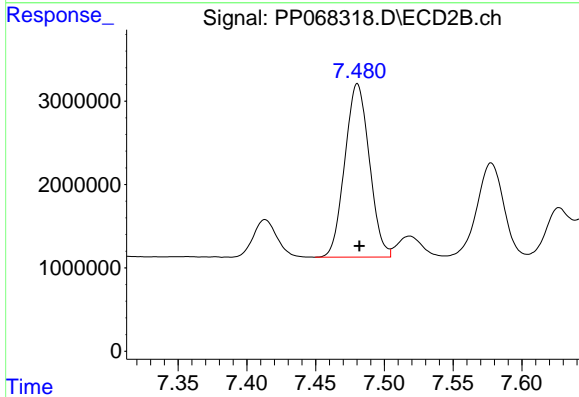
R.T.: 7.218 min  
 Delta R.T.: -0.001 min  
 Response: 27232582  
 Conc: 346.15 ng/ml



#37 AR-1262-2

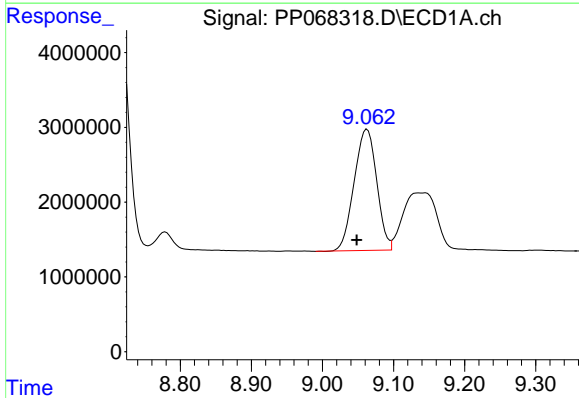
R.T.: 8.717 min  
 Delta R.T.: 0.008 min  
 Response: 51816568  
 Conc: 426.19 ng/ml

Instrument :  
 ECD\_P  
 ClientSampleId :  
 AR1660CCC500



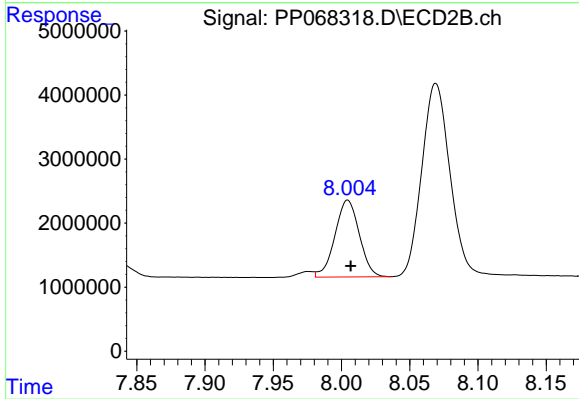
#37 AR-1262-2

R.T.: 7.480 min  
 Delta R.T.: -0.002 min  
 Response: 25818052  
 Conc: 363.83 ng/ml



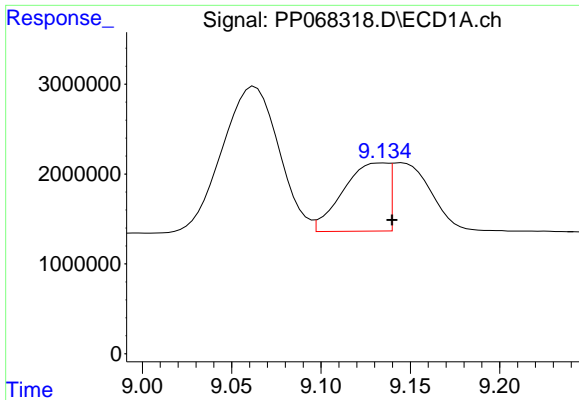
#38 AR-1262-3

R.T.: 9.063 min  
 Delta R.T.: 0.015 min  
 Response: 35767336  
 Conc: 404.09 ng/ml



#38 AR-1262-3

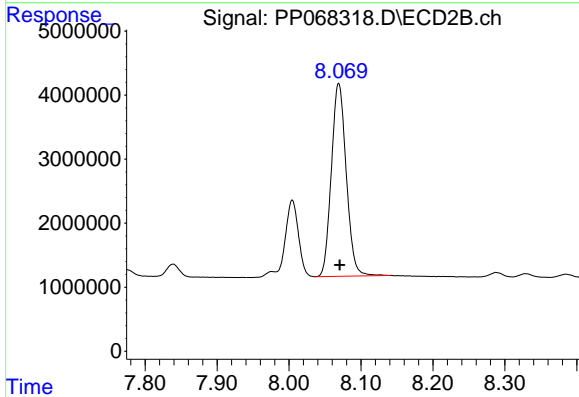
R.T.: 8.005 min  
 Delta R.T.: -0.002 min  
 Response: 14911946  
 Conc: 261.16 ng/ml



#39 AR-1262-4

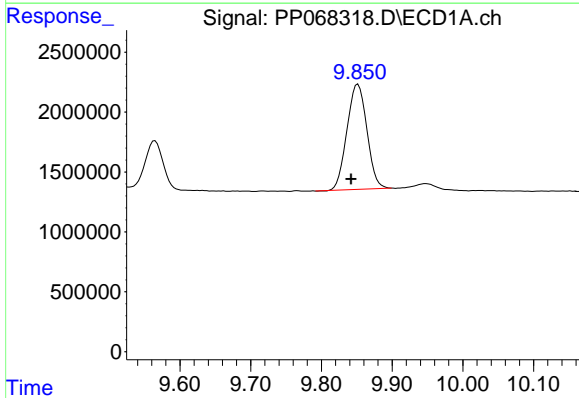
R.T.: 9.135 min  
 Delta R.T.: -0.004 min  
 Response: 13200542  
 Conc: 188.73 ng/ml

Instrument :  
 ECD\_P  
 ClientSampleId :  
 AR1660CCC500



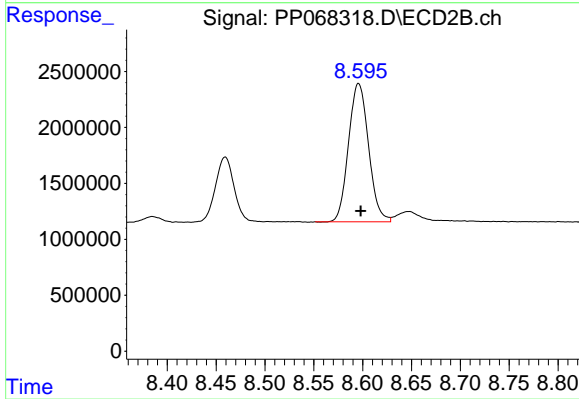
#39 AR-1262-4

R.T.: 8.069 min  
 Delta R.T.: -0.001 min  
 Response: 43269481  
 Conc: 430.81 ng/ml



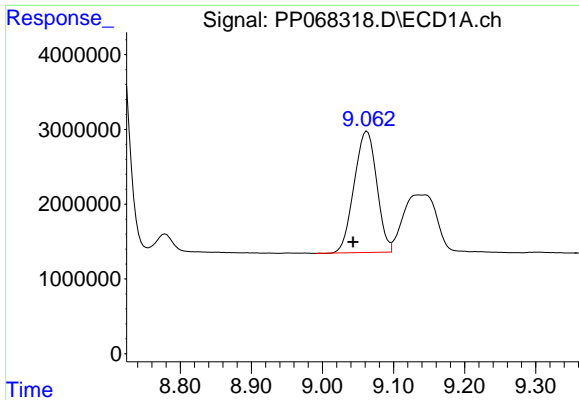
#40 AR-1262-5

R.T.: 9.852 min  
 Delta R.T.: 0.010 min  
 Response: 17235213  
 Conc: 368.34 ng/ml



#40 AR-1262-5

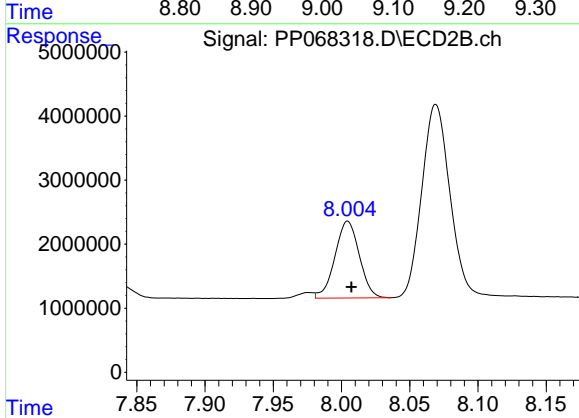
R.T.: 8.596 min  
 Delta R.T.: -0.002 min  
 Response: 17675062  
 Conc: 353.38 ng/ml



#41 AR-1268-1

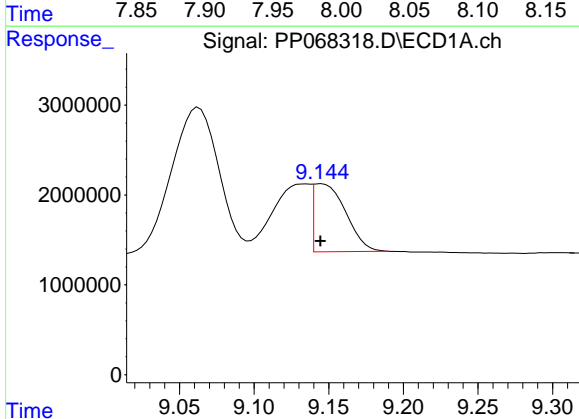
R.T.: 9.063 min  
 Delta R.T.: 0.020 min  
 Response: 35767336  
 Conc: 234.31 ng/ml

Instrument :  
 ECD\_P  
 ClientSampleId :  
 AR1660CCC500



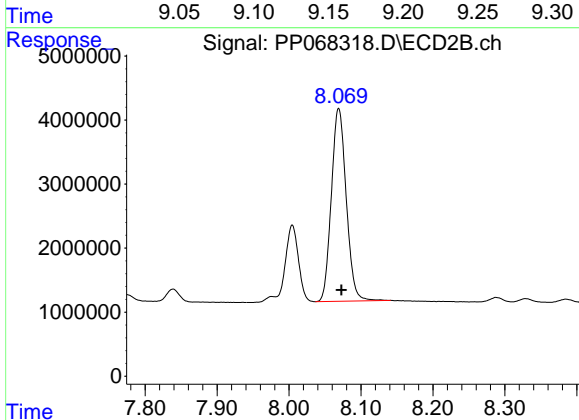
#41 AR-1268-1

R.T.: 8.005 min  
 Delta R.T.: -0.003 min  
 Response: 14911946  
 Conc: 93.70 ng/ml



#42 AR-1268-2

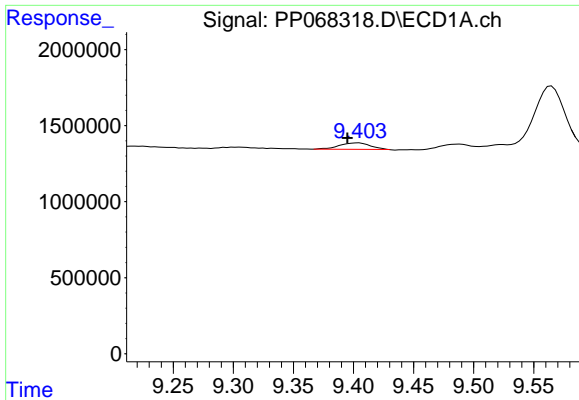
R.T.: 9.145 min  
 Delta R.T.: 0.000 min  
 Response: 11435355  
 Conc: 83.72 ng/ml



#42 AR-1268-2

R.T.: 8.069 min  
 Delta R.T.: -0.004 min  
 Response: 43269481  
 Conc: 302.19 ng/ml

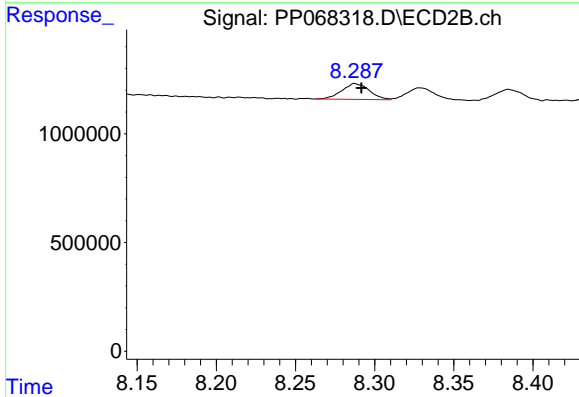




#43 AR-1268-3

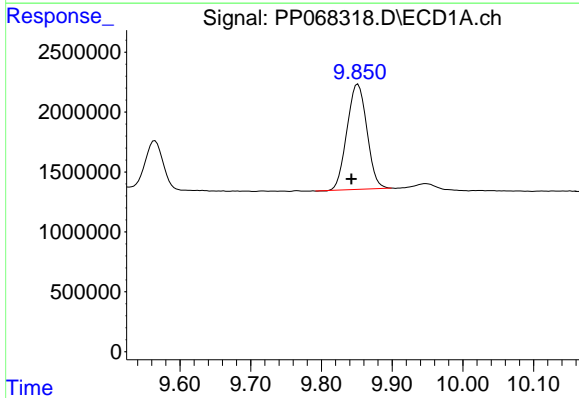
R.T.: 9.404 min  
 Delta R.T.: 0.009 min  
 Response: 752462  
 Conc: 6.22 ng/ml

Instrument :  
 ECD\_P  
 ClientSampleId :  
 AR1660CCC500



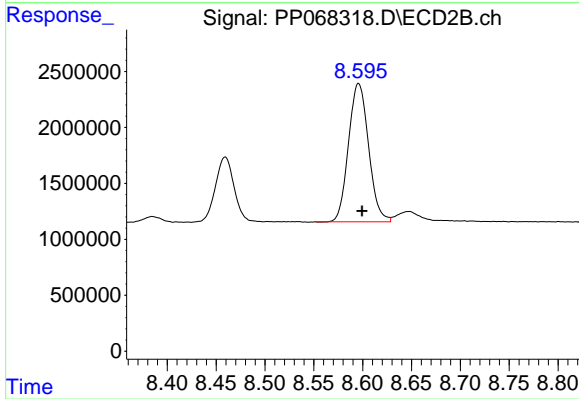
#43 AR-1268-3

R.T.: 8.288 min  
 Delta R.T.: -0.004 min  
 Response: 875387  
 Conc: 6.87 ng/ml



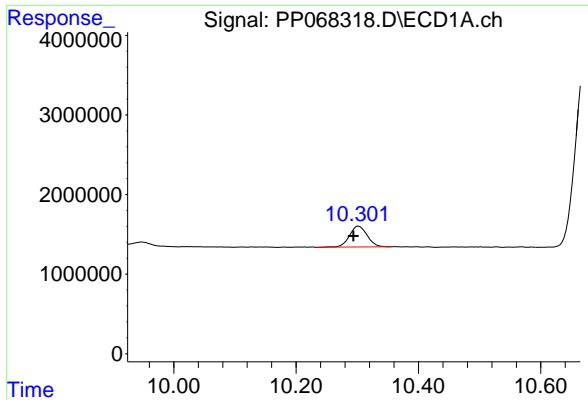
#44 AR-1268-4

R.T.: 9.852 min  
 Delta R.T.: 0.009 min  
 Response: 17235213  
 Conc: 339.14 ng/ml



#44 AR-1268-4

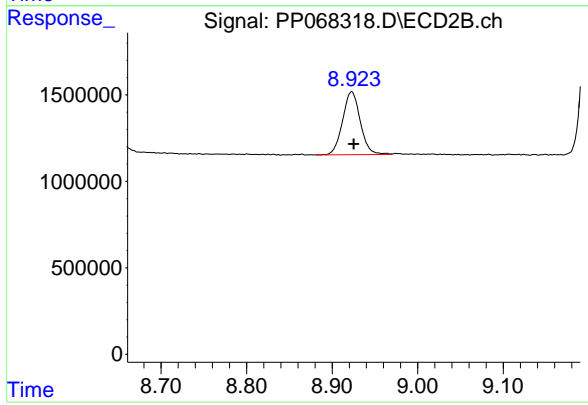
R.T.: 8.596 min  
 Delta R.T.: -0.003 min  
 Response: 17675062  
 Conc: 312.97 ng/ml



#45 AR-1268-5

R.T.: 10.302 min  
Delta R.T.: 0.009 min  
Response: 5261183  
Conc: 14.09 ng/ml

Instrument :  
ECD\_P  
ClientSampleId :  
AR1660CCC500



#45 AR-1268-5

R.T.: 8.923 min  
Delta R.T.: -0.003 min  
Response: 5247293  
Conc: 13.88 ng/ml