

Data Path : Z:\pestpcbsrv\HPCHEM1\ECD_P\Data\PP110120\
 Data File : PP031009.D
 Signal(s) : Signal #1: ECD1A.CH Signal #2: ECD2B.CH
 Acq On : 30 Oct 2020 15:57
 Operator : DD\AJ
 Sample : MDL-AR1262-S-3
 Misc :
 ALS Vial : 10 Sample Multiplier: 1

Instrument :
 ECD_P
 ClientSampleId :

Integration File signal 1: autoint1.e
 Integration File signal 2: autoint2.e
 Quant Time: Oct 31 02:43:29 2020
 Quant Method : Z:\pestpcbsrv\HPCHEM1\ECD_O\methods\AR1262PP110120.M
 Quant Title : GC EXTRACTABLES
 QLast Update : Sat Oct 31 02:26:29 2020
 Response via : Initial Calibration
 Integrator: ChemStation 6890 Scale Mode: Small noise peaks clipped

Volume Inj. : 2 µl
 Signal #1 Phase : ZB-MR1 Signal #2 Phase: ZB-MR2
 Signal #1 Info : 30Mx0.32mmx 0.50µ Signal #2 Info : 30M x 0.32mm x 0.25µm

Compound	RT#1	RT#2	Resp#1	Resp#2	ng/ml	ng/ml

System Monitoring Compounds						
1) SA Tetrachlo...	4.801	4.079	1058189	925538	16.587	16.021
2) SA Decachlor...	10.689	9.409	618169	662270	16.646	16.748
Target Compounds						
36) L8 AR-1262-1	8.420	7.508	52187	52072	22.235	19.945
37) L8 AR-1262-2	8.964	8.017	84093	93917	19.856	19.942
38) L8 AR-1262-3	9.266	8.305	62380	43678	20.886	21.994
39) L8 AR-1262-4	9.354	8.369	29311	78579	11.987	21.730 #
40) L8 AR-1262-5	9.982	8.866	28744	33339	18.378	20.232

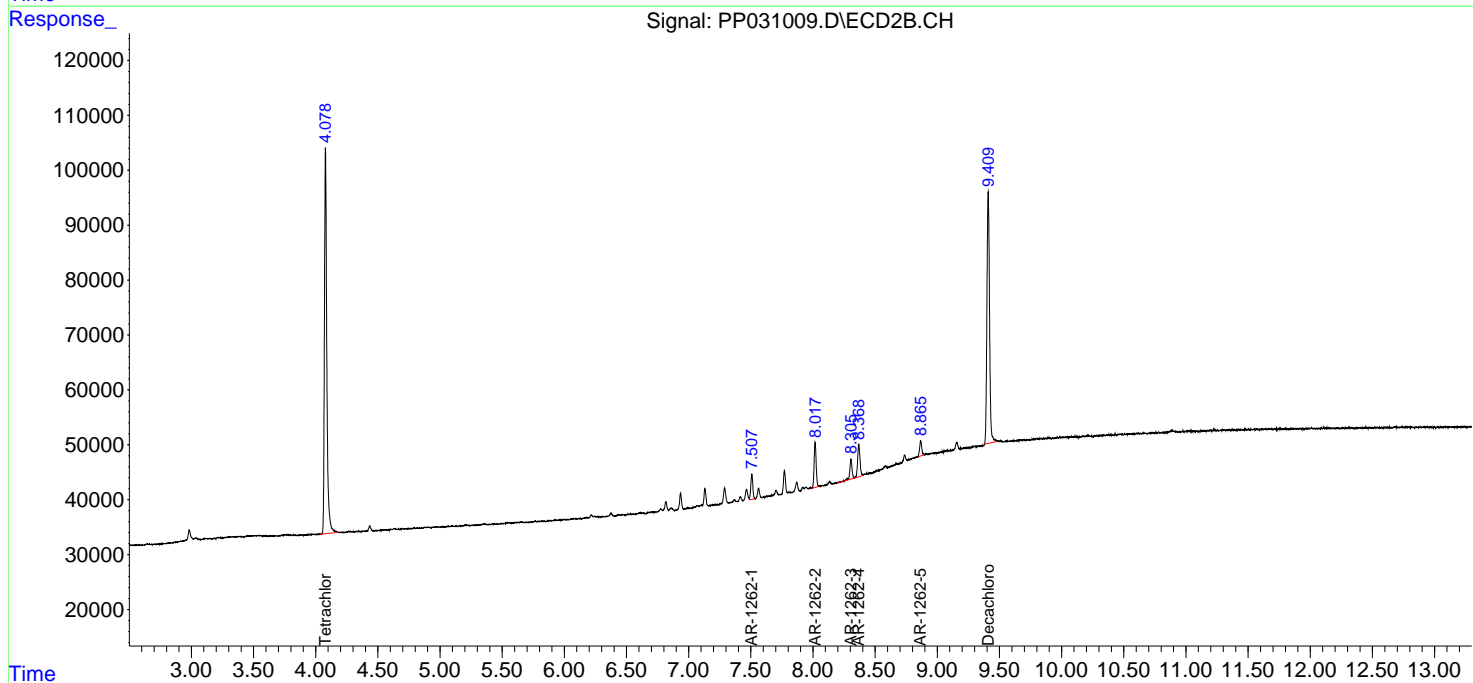
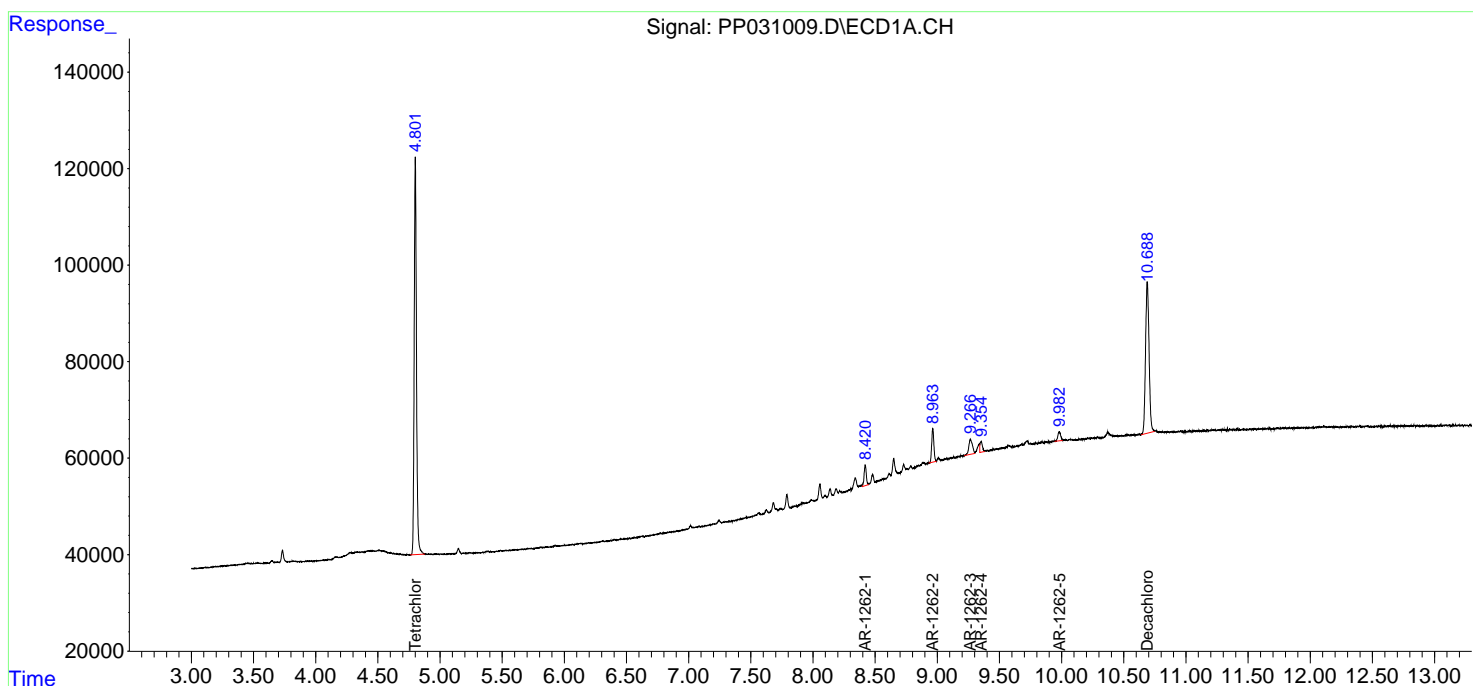
(f)=RT Delta > 1/2 Window (#)=Amounts differ by > 25% (m)=manual int.

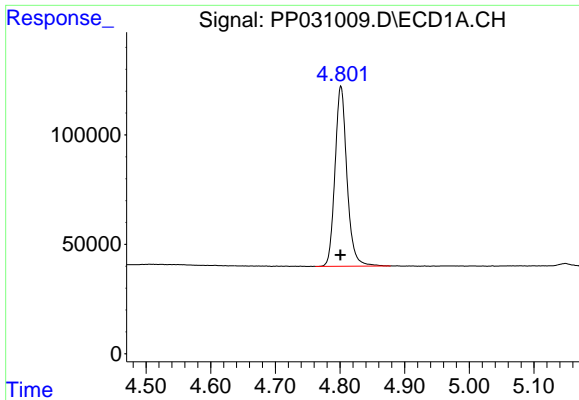
Data Path : Z:\pestpcbsrv\HPCHEM1\ECD_P\Data\PP110120\
 Data File : PP031009.D
 Signal(s) : Signal #1: ECD1A.CH Signal #2: ECD2B.CH
 Acq On : 30 Oct 2020 15:57
 Operator : DD\AJ
 Sample : MDL-AR1262-S-3
 Misc :
 ALS Vial : 10 Sample Multiplier: 1

Instrument :
 ECD_P
 ClientSampled :

Integration File signal 1: autoint1.e
 Integration File signal 2: autoint2.e
 Quant Time: Oct 31 02:43:29 2020
 Quant Method : Z:\pestpcbsrv\HPCHEM1\ECD_O\methods\AR1262PP110120.M
 Quant Title : GC EXTRACTABLES
 QLast Update : Sat Oct 31 02:26:29 2020
 Response via : Initial Calibration
 Integrator: ChemStation 6890 Scale Mode: Small noise peaks clipped

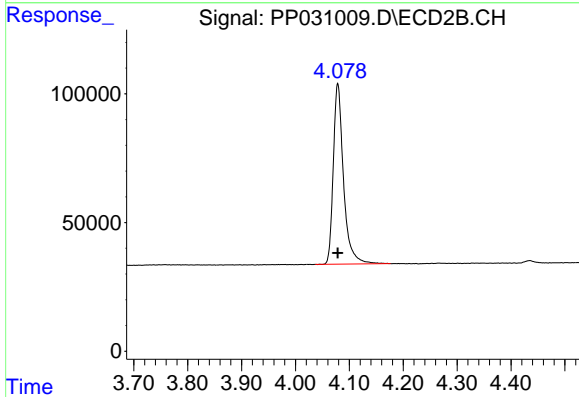
Volume Inj. : 2 µl
 Signal #1 Phase : ZB-MR1 Signal #2 Phase: ZB-MR2
 Signal #1 Info : 30Mx0.32mmx 0.50µ Signal #2 Info : 30M x 0.32mm x 0.25µm



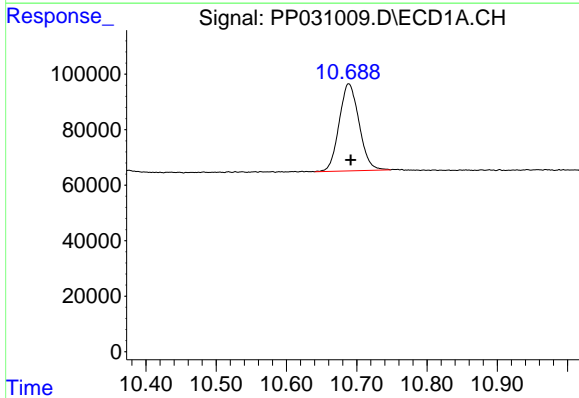


#1 Tetrachloro-m-xylene
 R.T.: 4.801 min
 Delta R.T.: 0.000 min
 Response: 1058189
 Conc: 16.59 ng/ml

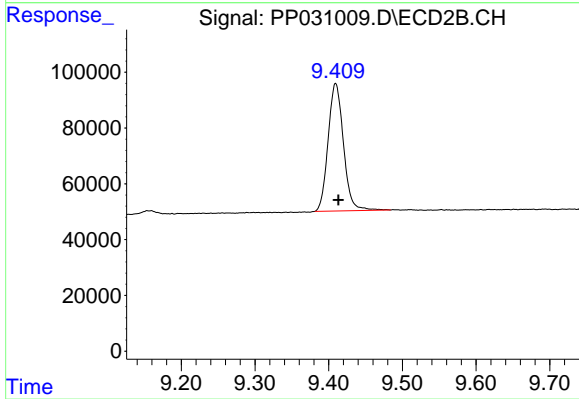
Instrument :
 ECD_P
 ClientSampleId :



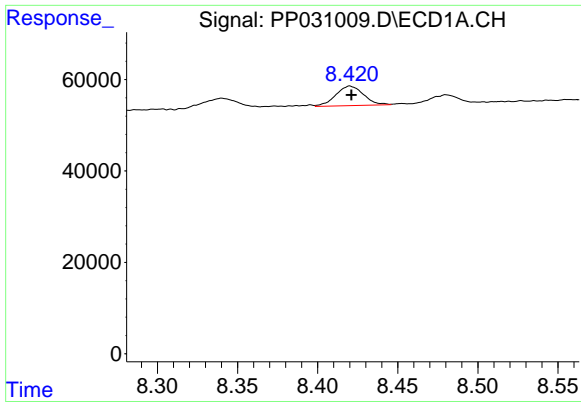
#1 Tetrachloro-m-xylene
 R.T.: 4.079 min
 Delta R.T.: 0.000 min
 Response: 925538
 Conc: 16.02 ng/ml



#2 Decachlorobiphenyl
 R.T.: 10.689 min
 Delta R.T.: -0.003 min
 Response: 618169
 Conc: 16.65 ng/ml



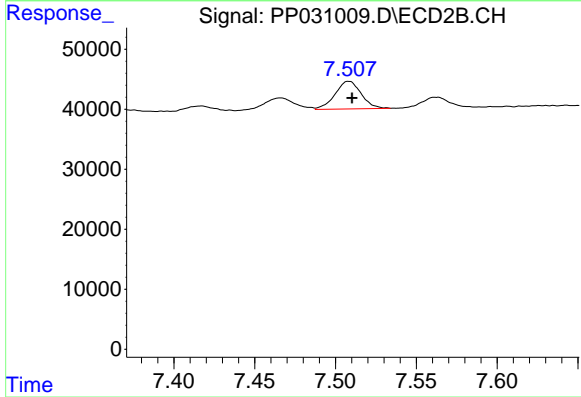
#2 Decachlorobiphenyl
 R.T.: 9.409 min
 Delta R.T.: -0.004 min
 Response: 662270
 Conc: 16.75 ng/ml



#36 AR-1262-1

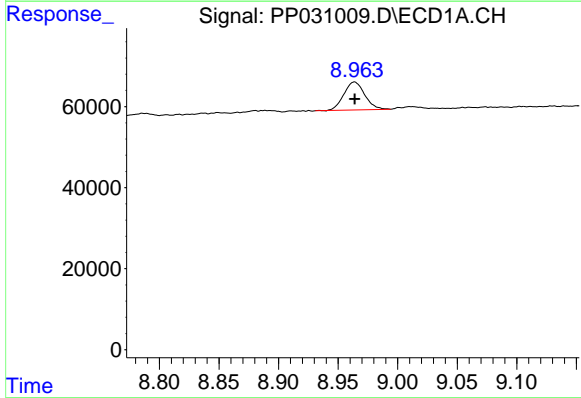
R.T.: 8.420 min
 Delta R.T.: 0.000 min
 Response: 52187
 Conc: 22.23 ng/ml

Instrument :
 ECD_P
 ClientSampleId :



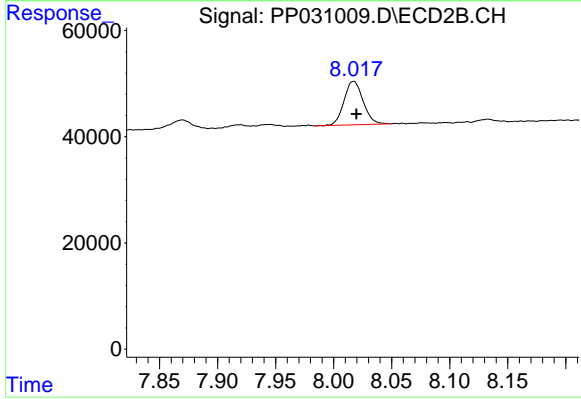
#36 AR-1262-1

R.T.: 7.508 min
 Delta R.T.: -0.002 min
 Response: 52072
 Conc: 19.95 ng/ml



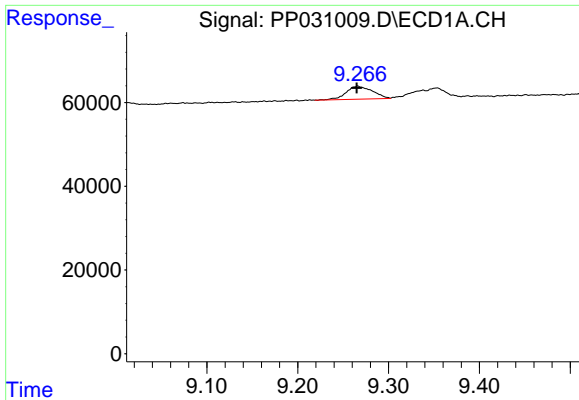
#37 AR-1262-2

R.T.: 8.964 min
 Delta R.T.: 0.000 min
 Response: 84093
 Conc: 19.86 ng/ml



#37 AR-1262-2

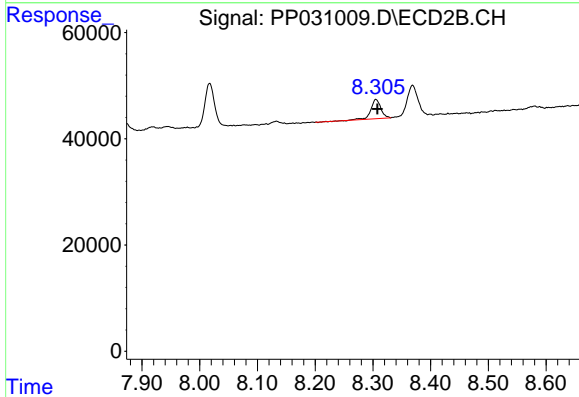
R.T.: 8.017 min
 Delta R.T.: -0.002 min
 Response: 93917
 Conc: 19.94 ng/ml



#38 AR-1262-3

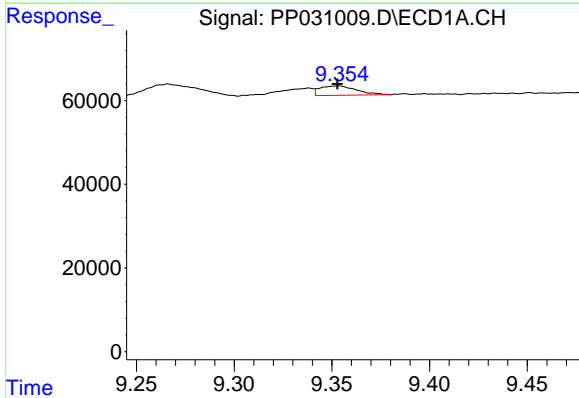
R.T.: 9.266 min
 Delta R.T.: 0.001 min
 Response: 62380
 Conc: 20.89 ng/ml

Instrument :
 ECD_P
 ClientSampleId :



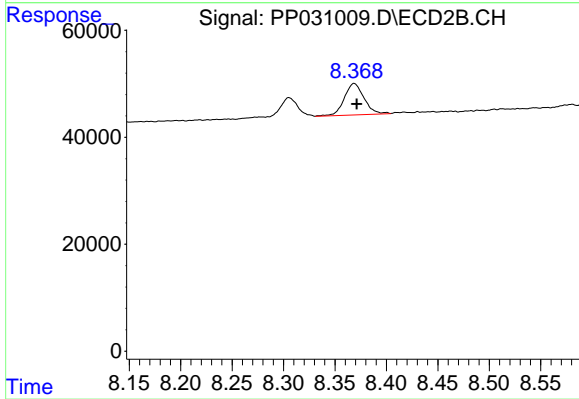
#38 AR-1262-3

R.T.: 8.305 min
 Delta R.T.: -0.002 min
 Response: 43678
 Conc: 21.99 ng/ml



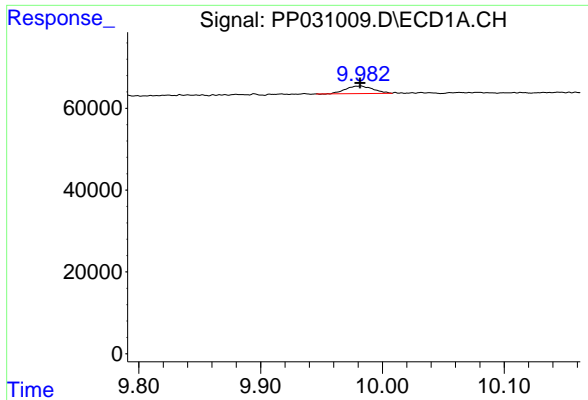
#39 AR-1262-4

R.T.: 9.354 min
 Delta R.T.: 0.000 min
 Response: 29311
 Conc: 11.99 ng/ml



#39 AR-1262-4

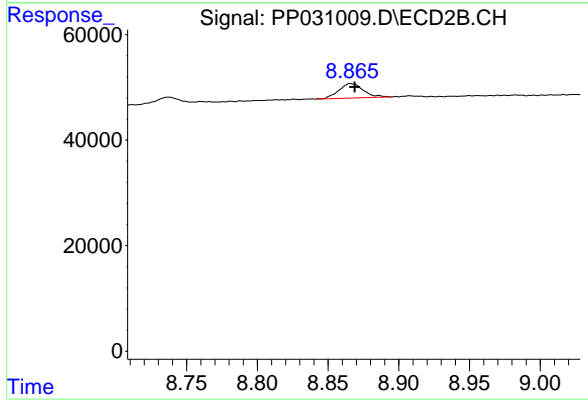
R.T.: 8.369 min
 Delta R.T.: -0.003 min
 Response: 78579
 Conc: 21.73 ng/ml



#40 AR-1262-5

R.T.: 9.982 min
Delta R.T.: 0.000 min
Response: 28744
Conc: 18.38 ng/ml

Instrument :
ECD_P
ClientSampleId :



#40 AR-1262-5

R.T.: 8.866 min
Delta R.T.: -0.003 min
Response: 33339
Conc: 20.23 ng/ml