

Data Path : Z:\pestpcbsrv\HPCHEM1\ECD_P\Data\PP110120\
 Data File : PP031017.D
 Signal(s) : Signal #1: ECD1A.CH Signal #2: ECD2B.CH
 Acq On : 30 Oct 2020 18:11
 Operator : DD\AJ
 Sample : MDL-AR1262-W-9
 Misc :
 ALS Vial : 18 Sample Multiplier: 1

Instrument :
 ECD_P
 ClientSampleId :

Integration File signal 1: autoint1.e
 Integration File signal 2: autoint2.e
 Quant Time: Oct 31 02:45:06 2020
 Quant Method : Z:\pestpcbsrv\HPCHEM1\ECD_O\methods\AR1262PP110120.M
 Quant Title : GC EXTRACTABLES
 QLast Update : Sat Oct 31 02:26:29 2020
 Response via : Initial Calibration
 Integrator: ChemStation 6890 Scale Mode: Small noise peaks clipped

Volume Inj. : 2 µl
 Signal #1 Phase : ZB-MR1 Signal #2 Phase: ZB-MR2
 Signal #1 Info : 30Mx0.32mmx 0.50µ Signal #2 Info : 30M x 0.32mm x 0.25µm

| Compound | RT#1 | RT#2 | Resp#1 | Resp#2 | ng/ml | ng/ml |
|-----------------------------|--------|-------|---------|--------|--------|----------|
| ----- | | | | | | |
| System Monitoring Compounds | | | | | | |
| 1) SA Tetrachlo... | 4.801 | 4.078 | 1027612 | 894077 | 16.107 | 15.476 |
| 2) SA Decachlor... | 10.688 | 9.408 | 616893 | 649993 | 16.611 | 16.438 |
| Target Compounds | | | | | | |
| 36) L8 AR-1262-1 | 8.421 | 7.507 | 52894 | 54055 | 22.536 | 20.705 |
| 37) L8 AR-1262-2 | 8.964 | 8.016 | 87700 | 97375 | 20.708 | 20.677 |
| 38) L8 AR-1262-3 | 9.265 | 8.304 | 60751 | 45092 | 20.341 | 22.706 |
| 39) L8 AR-1262-4 | 9.353 | 8.368 | 32698 | 76868 | 13.372 | 21.257 # |
| 40) L8 AR-1262-5 | 9.979 | 8.864 | 33127 | 32969 | 21.180 | 20.007 |
| ----- | | | | | | |

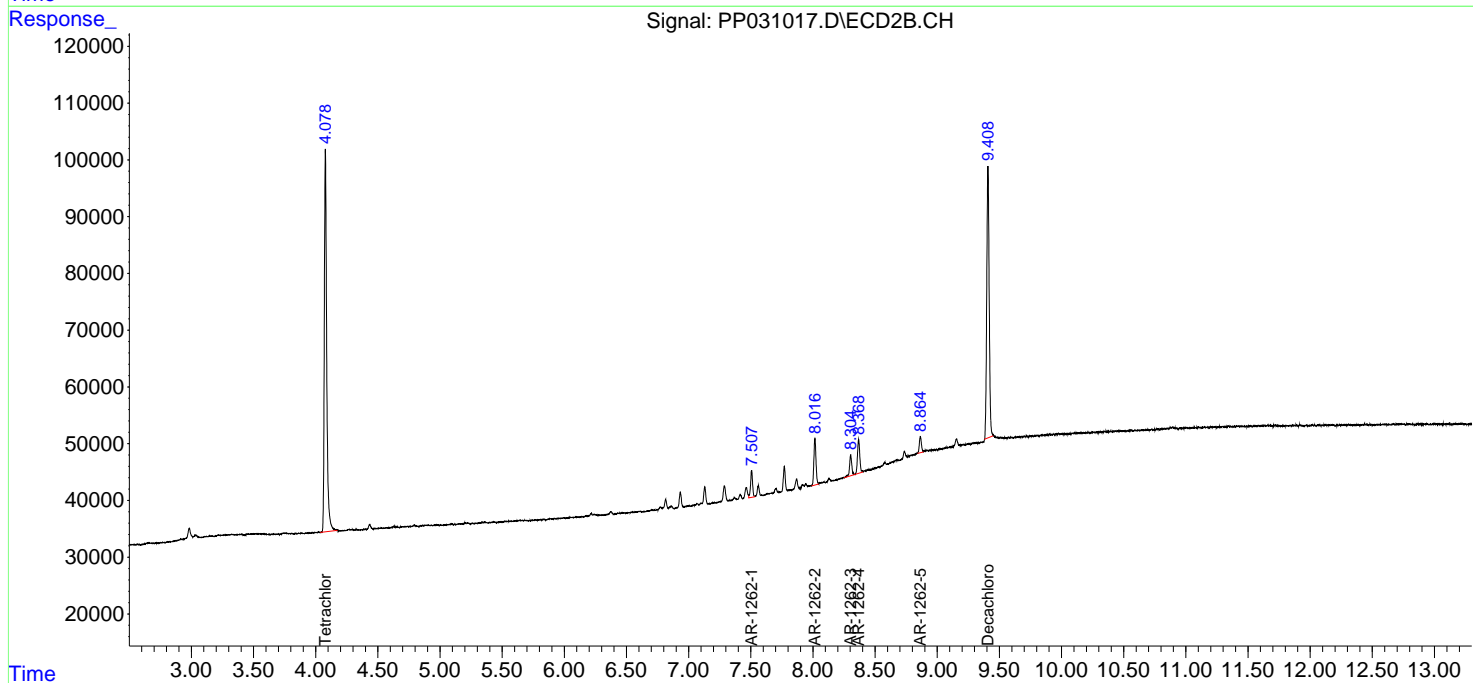
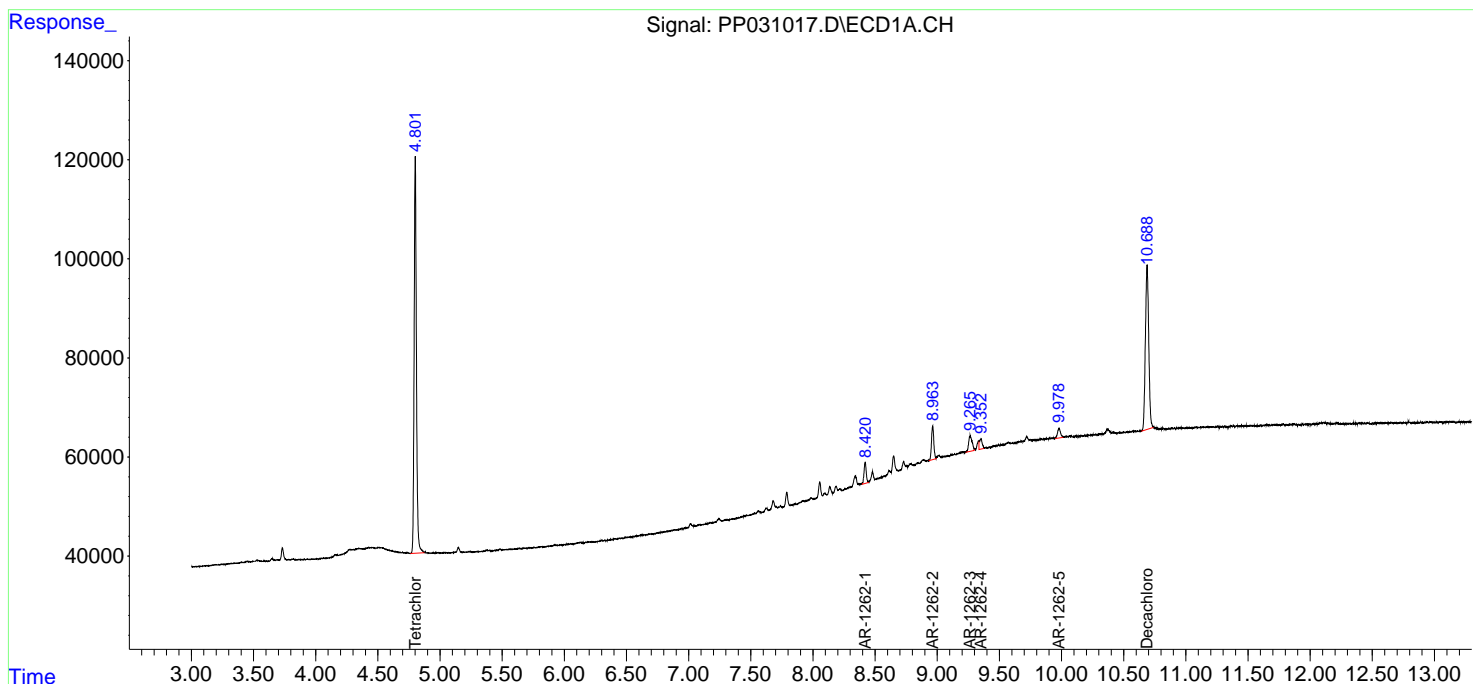
(f)=RT Delta > 1/2 Window (#)=Amounts differ by > 25% (m)=manual int.

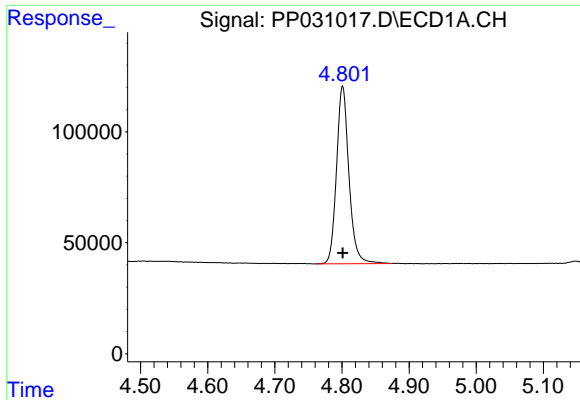
Data Path : Z:\pestpcbsrv\HPCHEM1\ECD_P\Data\PP110120\
 Data File : PP031017.D
 Signal(s) : Signal #1: ECD1A.CH Signal #2: ECD2B.CH
 Acq On : 30 Oct 2020 18:11
 Operator : DD\AJ
 Sample : MDL-AR1262-W-9
 Misc :
 ALS Vial : 18 Sample Multiplier: 1

Instrument :
 ECD_P
 ClientSampled :

Integration File signal 1: autoint1.e
 Integration File signal 2: autoint2.e
 Quant Time: Oct 31 02:45:06 2020
 Quant Method : Z:\pestpcbsrv\HPCHEM1\ECD_O\methods\AR1262PP110120.M
 Quant Title : GC EXTRACTABLES
 QLast Update : Sat Oct 31 02:26:29 2020
 Response via : Initial Calibration
 Integrator: ChemStation 6890 Scale Mode: Small noise peaks clipped

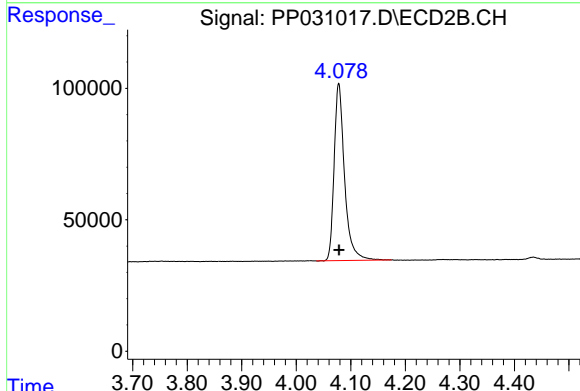
Volume Inj. : 2 µl
 Signal #1 Phase : ZB-MR1 Signal #2 Phase: ZB-MR2
 Signal #1 Info : 30Mx0.32mmx 0.50µ Signal #2 Info : 30M x 0.32mm x 0.25µm



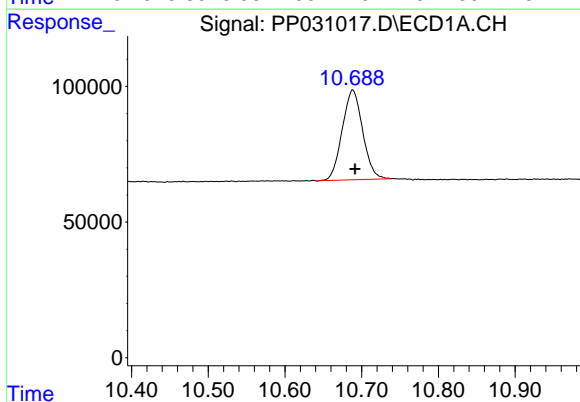


#1 Tetrachloro-m-xylene
 R.T.: 4.801 min
 Delta R.T.: 0.000 min
 Response: 1027612
 Conc: 16.11 ng/ml

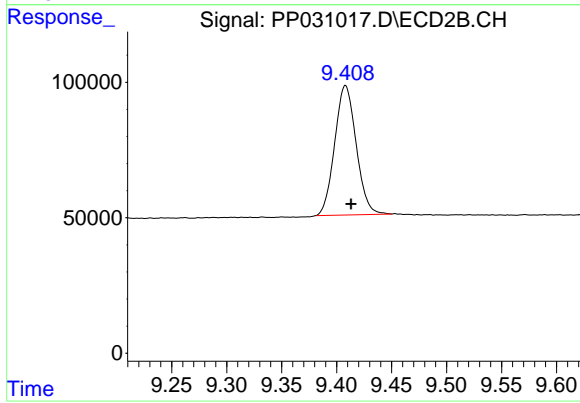
Instrument :
 ECD_P
 ClientSampleId :



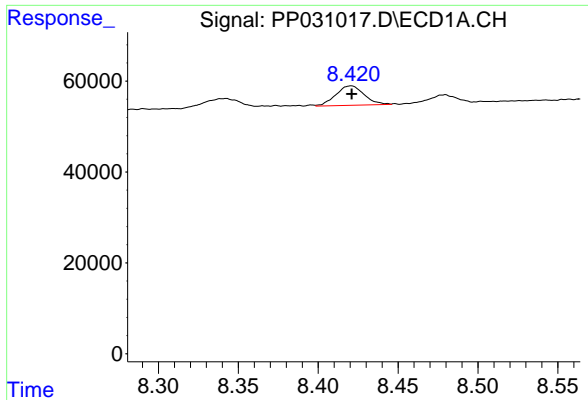
#1 Tetrachloro-m-xylene
 R.T.: 4.078 min
 Delta R.T.: 0.000 min
 Response: 894077
 Conc: 15.48 ng/ml



#2 Decachlorobiphenyl
 R.T.: 10.688 min
 Delta R.T.: -0.003 min
 Response: 616893
 Conc: 16.61 ng/ml

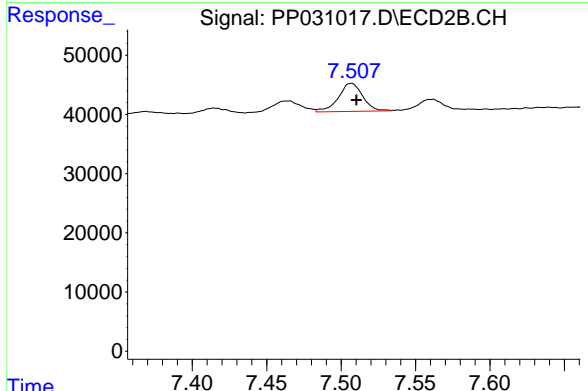


#2 Decachlorobiphenyl
 R.T.: 9.408 min
 Delta R.T.: -0.005 min
 Response: 649993
 Conc: 16.44 ng/ml

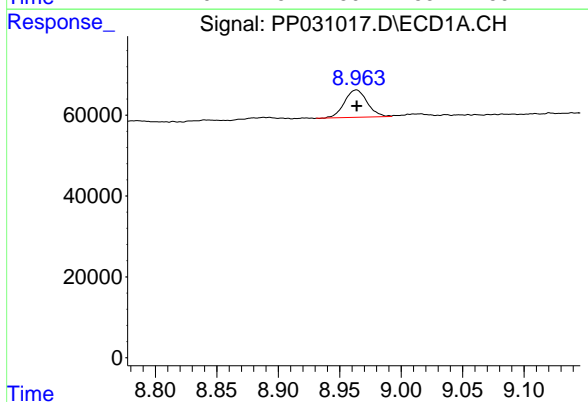


#36 AR-1262-1
 R.T.: 8.421 min
 Delta R.T.: 0.000 min
 Response: 52894
 Conc: 22.54 ng/ml

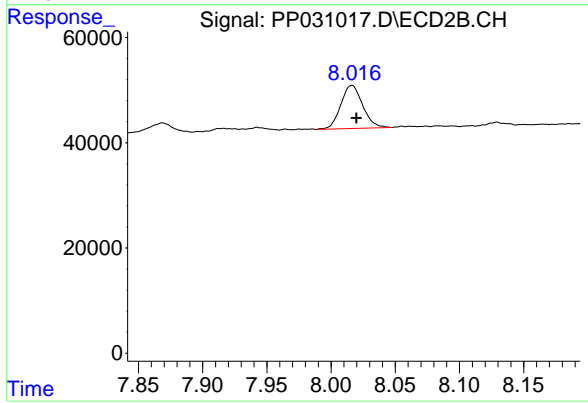
Instrument :
 ECD_P
 ClientSampleId :



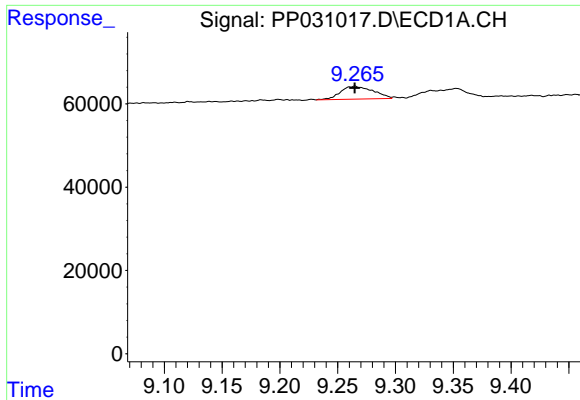
#36 AR-1262-1
 R.T.: 7.507 min
 Delta R.T.: -0.003 min
 Response: 54055
 Conc: 20.71 ng/ml



#37 AR-1262-2
 R.T.: 8.964 min
 Delta R.T.: 0.000 min
 Response: 87700
 Conc: 20.71 ng/ml



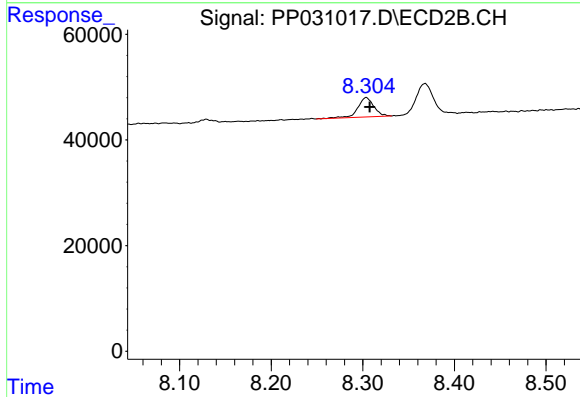
#37 AR-1262-2
 R.T.: 8.016 min
 Delta R.T.: -0.003 min
 Response: 97375
 Conc: 20.68 ng/ml



#38 AR-1262-3

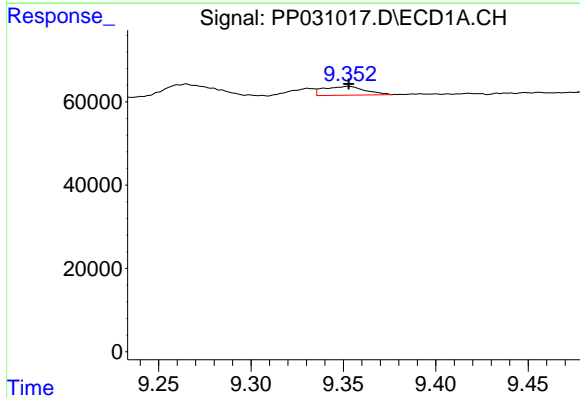
R.T.: 9.265 min
 Delta R.T.: 0.000 min
 Response: 60751
 Conc: 20.34 ng/ml

Instrument :
 ECD_P
 ClientSampleId :



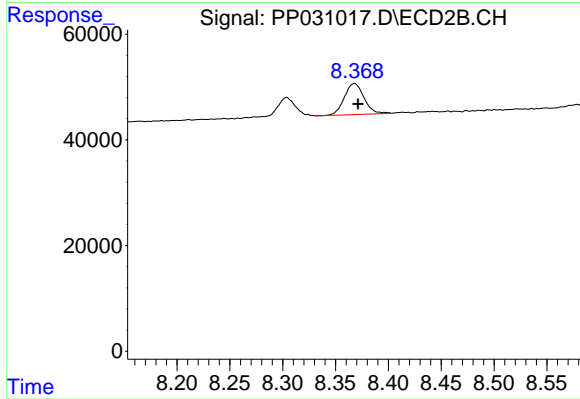
#38 AR-1262-3

R.T.: 8.304 min
 Delta R.T.: -0.004 min
 Response: 45092
 Conc: 22.71 ng/ml



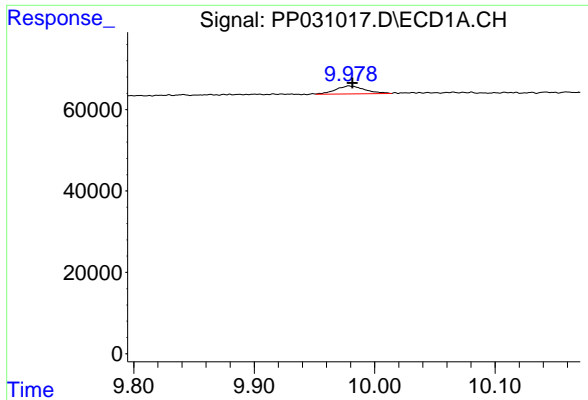
#39 AR-1262-4

R.T.: 9.353 min
 Delta R.T.: 0.000 min
 Response: 32698
 Conc: 13.37 ng/ml



#39 AR-1262-4

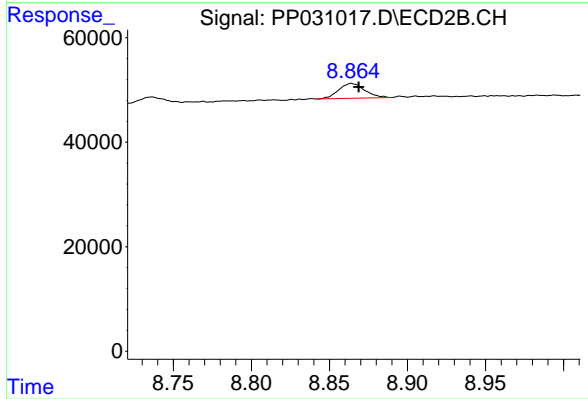
R.T.: 8.368 min
 Delta R.T.: -0.003 min
 Response: 76868
 Conc: 21.26 ng/ml



#40 AR-1262-5

R.T.: 9.979 min
Delta R.T.: -0.003 min
Response: 33127
Conc: 21.18 ng/ml

Instrument :
ECD_P
ClientSampleId :



#40 AR-1262-5

R.T.: 8.864 min
Delta R.T.: -0.005 min
Response: 32969
Conc: 20.01 ng/ml