

Data Path : Z:\pestpcbsrv\HPCHEM1\ECD_P\Data\PP110120\
 Data File : PP030991.D
 Signal(s) : Signal #1: ECD1A.CH Signal #2: ECD2B.CH
 Acq On : 30 Oct 2020 10:38
 Operator : DD\AJ
 Sample : AR1262ICC050
 Misc :
 ALS Vial : 7 Sample Multiplier: 1

Instrument :
 ECD_P
ClientSampleId :
 AR1262ICC050

Manual Integrations
APPROVED

Ankita
 11/2/2020 3:00:02 PM

Integration File signal 1: autoint1.e
 Integration File signal 2: autoint2.e
 Quant Time: Oct 30 12:34:56 2020
 Quant Method : Z:\pestpcbsrv\HPCHEM1\ECD_O\methods\AR1268PP110120.M
 Quant Title : GC EXTRACTABLES
 QLast Update : Fri Oct 30 12:33:28 2020
 Response via : Initial Calibration
 Integrator: ChemStation 6890 Scale Mode: Small noise peaks clipped

Volume Inj. : 2 µl
 Signal #1 Phase : ZB-MR1 Signal #2 Phase: ZB-MR2
 Signal #1 Info : 30Mx0.32mmx 0.50µ Signal #2 Info : 30M x 0.32mm x 0.25µm

Compound	RT#1	RT#2	Resp#1	Resp#2	ng/ml	ng/ml

System Monitoring Compounds						
1) SA Tetrachlo...	4.801	4.080	358138	330520	5.704	5.852
2) SA Decachlor...	10.693	9.413	205038	206158	5.587	5.232
Target Compounds						
36) L8 AR-1262-1	8.421	7.510	149833	167137	67.944m	68.424m
37) L8 AR-1262-2	8.965	8.020	282841	304247	72.908	69.821
38) L8 AR-1262-3	9.266	8.308	194836	127421	70.042m	69.134
39) L8 AR-1262-4	9.353	8.372	149476	212708	63.432m	61.694
40) L8 AR-1262-5	9.983	8.869	94195	96776	63.214	61.212

(f)=RT Delta > 1/2 Window (#)=Amounts differ by > 25% (m)=manual int.

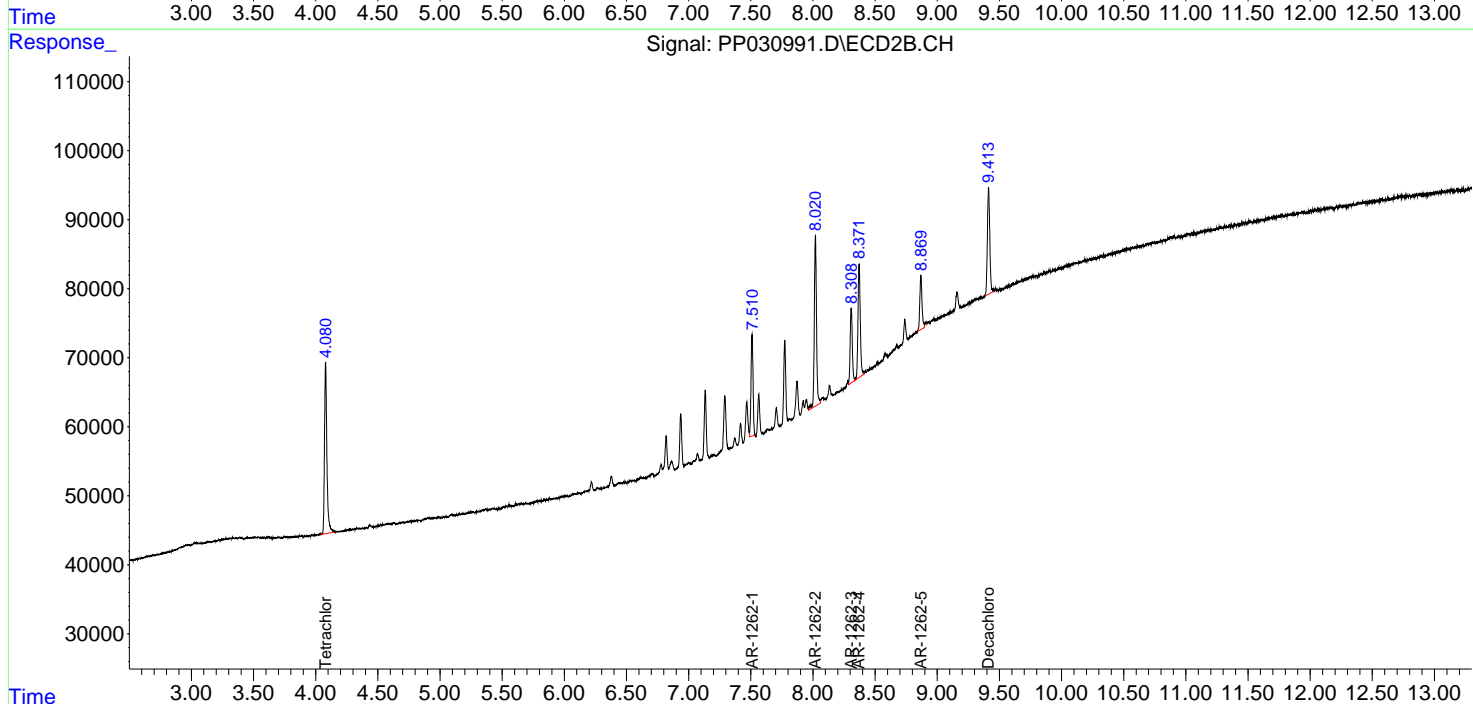
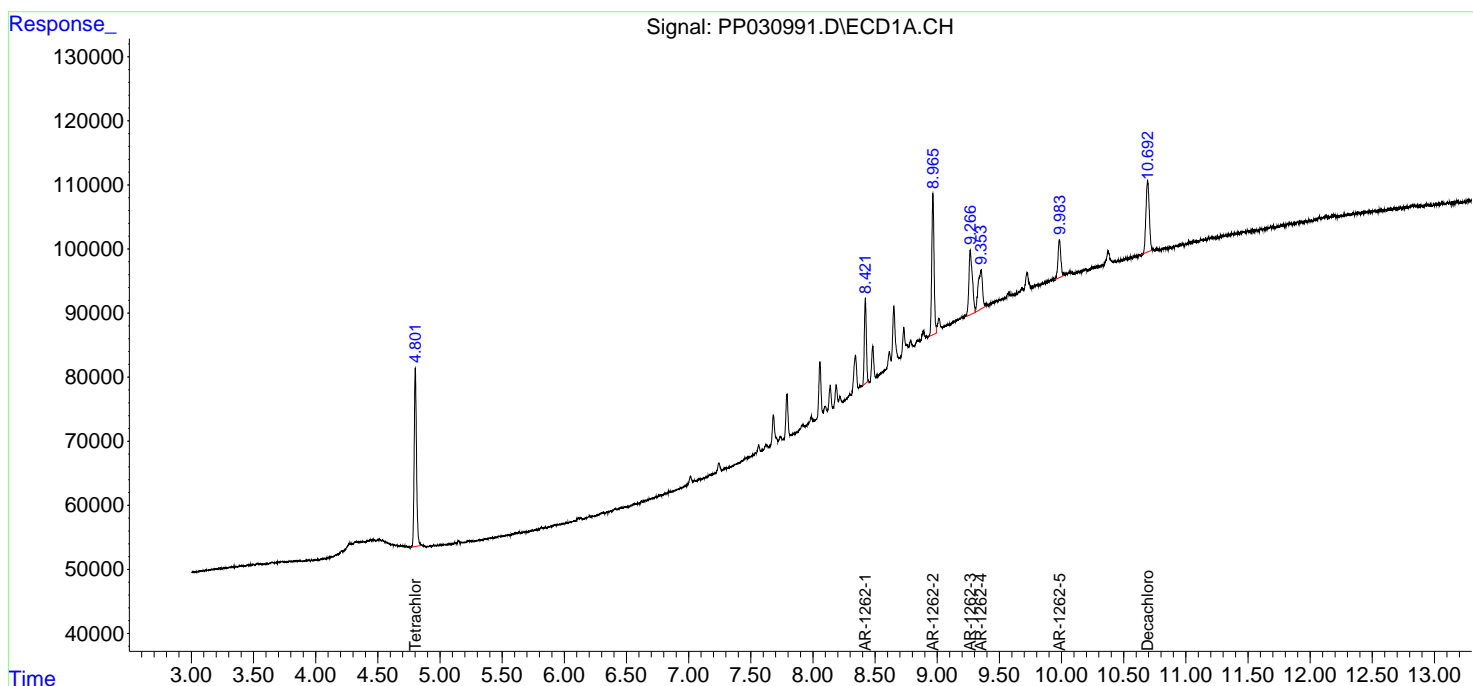
Data Path : Z:\pestpcbsrv\HPCHEM1\ECD_P\Data\PP110120\
 Data File : PP030991.D
 Signal(s) : Signal #1: ECD1A.CH Signal #2: ECD2B.CH
 Acq On : 30 Oct 2020 10:38
 Operator : DD\AJ
 Sample : AR1262ICC050
 Misc :
 ALS Vial : 7 Sample Multiplier: 1

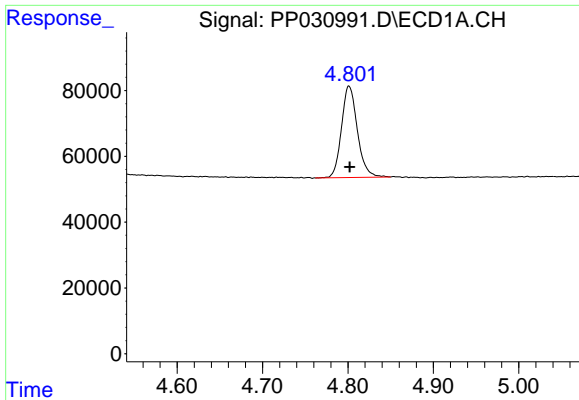
Instrument :
 ECD_P
Client Sampled :
 AR1262ICC050

Manual Integrations
APPROVED
 Ankita
 11/2/2020 3:00:02 PM

Integration File signal 1: autoint1.e
 Integration File signal 2: autoint2.e
 Quant Time: Oct 30 12:34:56 2020
 Quant Method : Z:\pestpcbsrv\HPCHEM1\ECD_O\methods\AR1268PP110120.M
 Quant Title : GC EXTRACTABLES
 QLast Update : Fri Oct 30 12:33:28 2020
 Response via : Initial Calibration
 Integrator: ChemStation 6890 Scale Mode: Small noise peaks clipped

Volume Inj. : 2 µl
 Signal #1 Phase : ZB-MR1 Signal #2 Phase: ZB-MR2
 Signal #1 Info : 30Mx0.32mmx 0.50µ Signal #2 Info : 30M x 0.32mm x 0.25µm

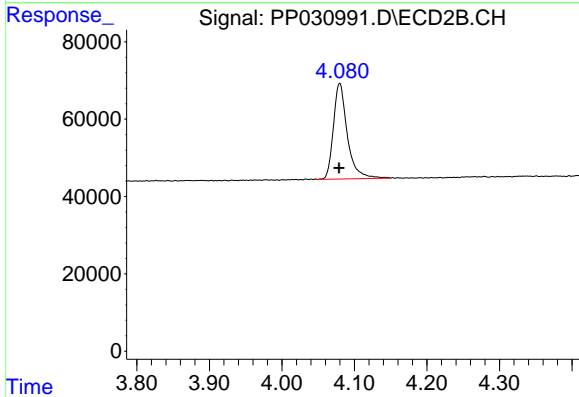




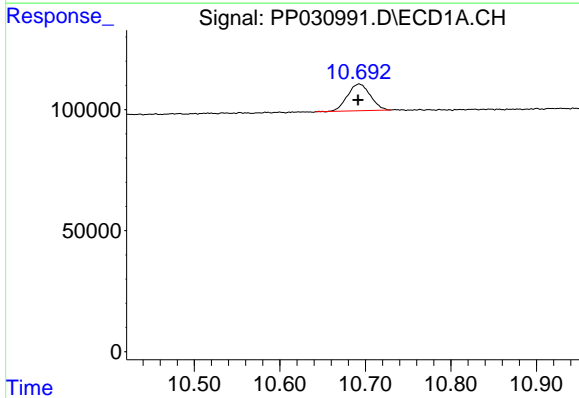
#1 Tetrachloro-m-xylene
 R.T.: 4.801 min
 Delta R.T.: 0.000 min
 Response: 358138
 Conc: 5.70 ng/ml

Instrument :
 ECD_P
ClientSampleId :
 AR1262ICC050

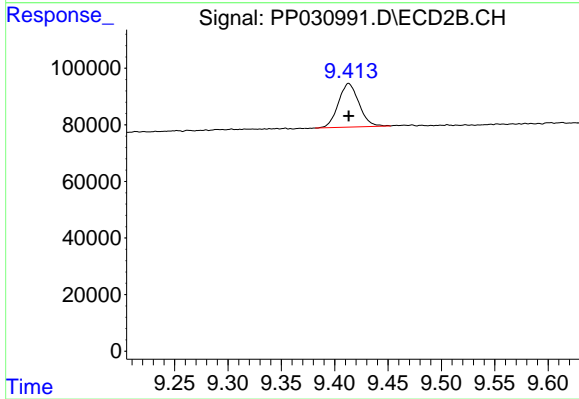
Manual Integrations
APPROVED
 Ankita
 11/2/2020 3:00:02 PM



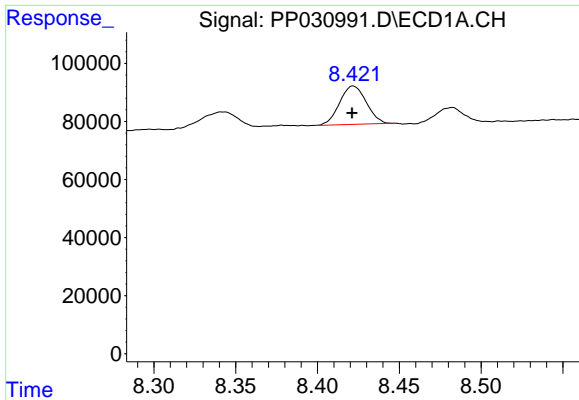
#1 Tetrachloro-m-xylene
 R.T.: 4.080 min
 Delta R.T.: 0.001 min
 Response: 330520
 Conc: 5.85 ng/ml



#2 Decachlorobiphenyl
 R.T.: 10.693 min
 Delta R.T.: 0.001 min
 Response: 205038
 Conc: 5.59 ng/ml



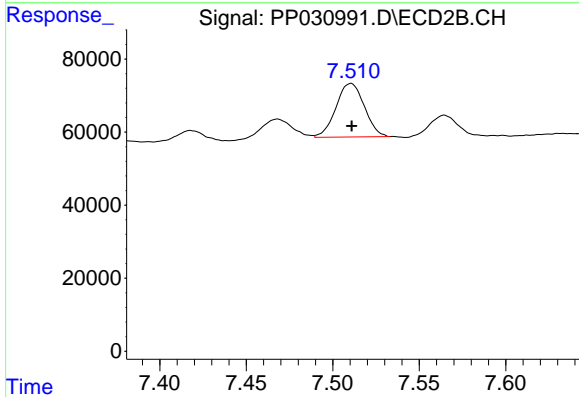
#2 Decachlorobiphenyl
 R.T.: 9.413 min
 Delta R.T.: 0.000 min
 Response: 206158
 Conc: 5.23 ng/ml



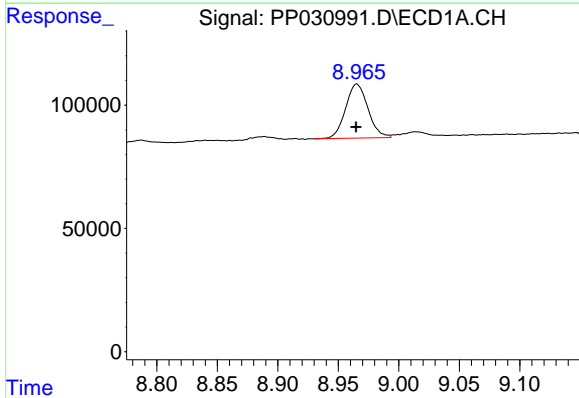
#36 AR-1262-1
 R.T.: 8.421 min
 Delta R.T.: 0.000 min
 Response: 149833
 Conc: 67.94 ng/ml m

Instrument :
 ECD_P
ClientSampleId :
 AR1262ICC050

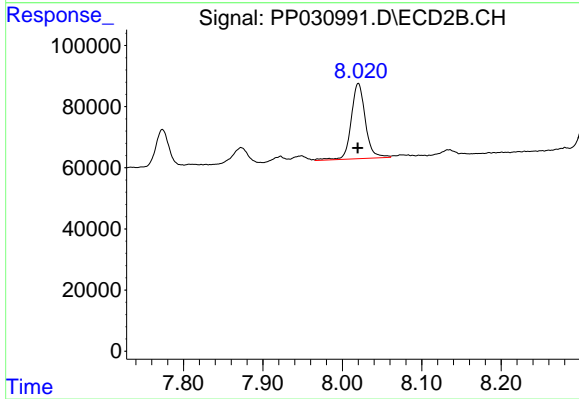
Manual Integrations
APPROVED
 Ankita
 11/2/2020 3:00:02 PM



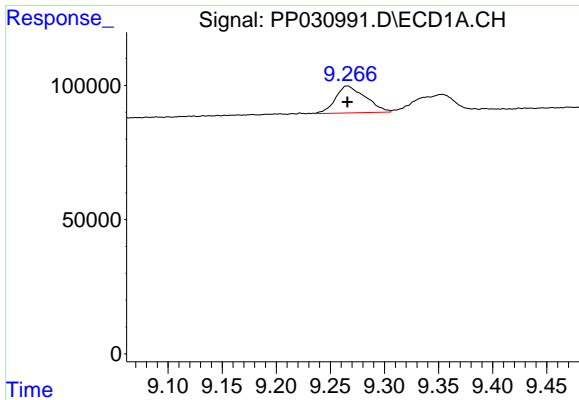
#36 AR-1262-1
 R.T.: 7.510 min
 Delta R.T.: 0.000 min
 Response: 167137
 Conc: 68.42 ng/ml m



#37 AR-1262-2
 R.T.: 8.965 min
 Delta R.T.: 0.000 min
 Response: 282841
 Conc: 72.91 ng/ml



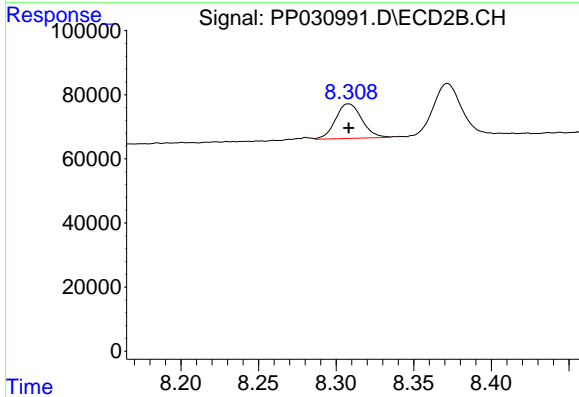
#37 AR-1262-2
 R.T.: 8.020 min
 Delta R.T.: 0.000 min
 Response: 304247
 Conc: 69.82 ng/ml



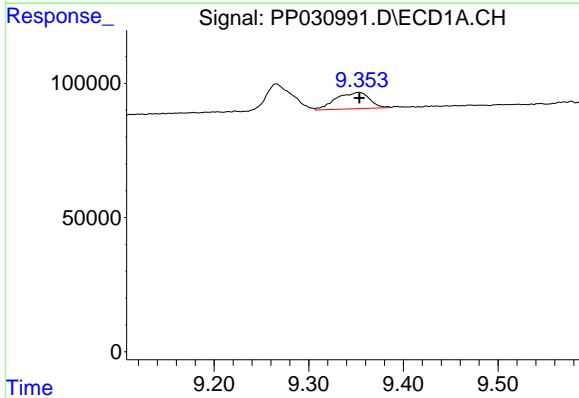
#38 AR-1262-3
 R.T.: 9.266 min
 Delta R.T.: 0.000 min
 Response: 194836
 Conc: 70.04 ng/ml m

Instrument :
 ECD_P
ClientSampleId :
 AR1262ICC050

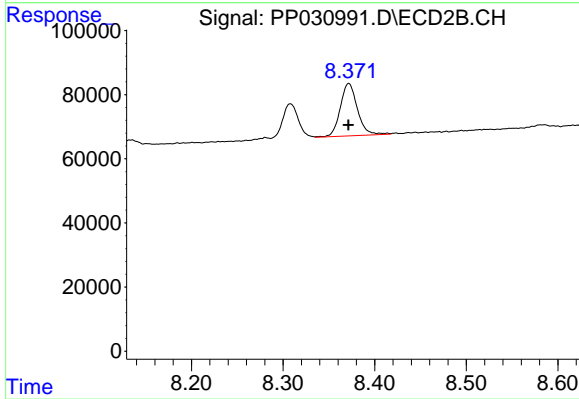
Manual Integrations
APPROVED
 Ankita
 11/2/2020 3:00:02 PM



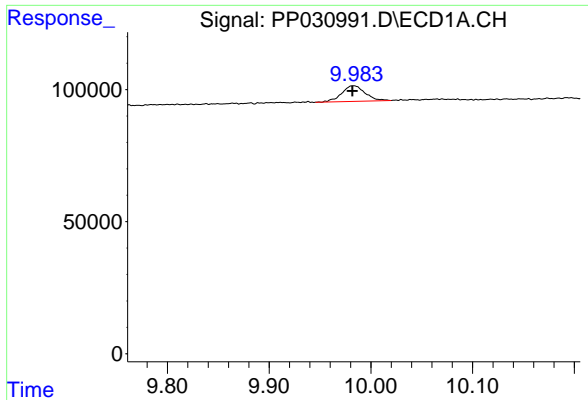
#38 AR-1262-3
 R.T.: 8.308 min
 Delta R.T.: 0.000 min
 Response: 127421
 Conc: 69.13 ng/ml



#39 AR-1262-4
 R.T.: 9.353 min
 Delta R.T.: 0.000 min
 Response: 149476
 Conc: 63.43 ng/ml m



#39 AR-1262-4
 R.T.: 8.372 min
 Delta R.T.: 0.000 min
 Response: 212708
 Conc: 61.69 ng/ml



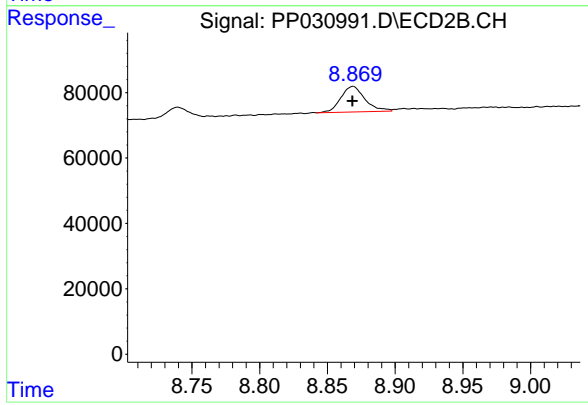
#40 AR-1262-5

R.T.: 9.983 min
Delta R.T.: 0.001 min
Response: 94195
Conc: 63.21 ng/ml

Instrument :
ECD_P
ClientSampleId :
AR1262ICC050

Manual Integrations
APPROVED

Ankita
11/2/2020 3:00:02 PM



#40 AR-1262-5

R.T.: 8.869 min
Delta R.T.: 0.000 min
Response: 96776
Conc: 61.21 ng/ml