

Data Path : Z:\pestpcbsrv\HPCHEM1\ECD_P\Data\PP110120\
 Data File : PP031012.D
 Signal(s) : Signal #1: ECD1A.CH Signal #2: ECD2B.CH
 Acq On : 30 Oct 2020 16:47
 Operator : DD\AJ
 Sample : MDL-AR1268-S-3
 Misc :
 ALS Vial : 13 Sample Multiplier: 1

Instrument :
 ECD_P
ClientSampleId :
 MDL-AR1268-S-3

Manual Integrations
APPROVED
 Ankita
 11/2/2020 3:00:14 PM

Integration File signal 1: autoint1.e
 Integration File signal 2: autoint2.e
 Quant Time: Oct 31 02:51:07 2020
 Quant Method : Z:\pestpcbsrv\HPCHEM1\ECD_O\methods\AR1268PP110120.M
 Quant Title : GC EXTRACTABLES
 QLast Update : Sat Oct 31 02:37:11 2020
 Response via : Initial Calibration
 Integrator: ChemStation 6890 Scale Mode: Small noise peaks clipped

Volume Inj. : 2 µl
 Signal #1 Phase : ZB-MR1 Signal #2 Phase: ZB-MR2
 Signal #1 Info : 30Mx0.32mmx 0.50µ Signal #2 Info : 30M x 0.32mm x 0.25µm

Compound	RT#1	RT#2	Resp#1	Resp#2	ng/ml	ng/ml

System Monitoring Compounds						
1) SA Tetrachlo...	4.801	4.078	1081800	942805	18.153	17.911
2) SA Decachlor...	10.690	9.410	700253	741379	12.203	11.742
Target Compounds						
41) L9 AR-1268-1	9.262	8.305	120378	125871	24.713m	23.398m
42) L9 AR-1268-2	9.352	8.370	110077	119350	22.727m	22.609
43) L9 AR-1268-3	9.571	8.580	96074	108361	23.744m	24.573
44) L9 AR-1268-4	9.980	8.866	36656	36571	22.823	20.333
45) L9 AR-1268-5	10.373	9.157	293547	303460	22.838	21.234

(f)=RT Delta > 1/2 Window (#)=Amounts differ by > 25% (m)=manual int.

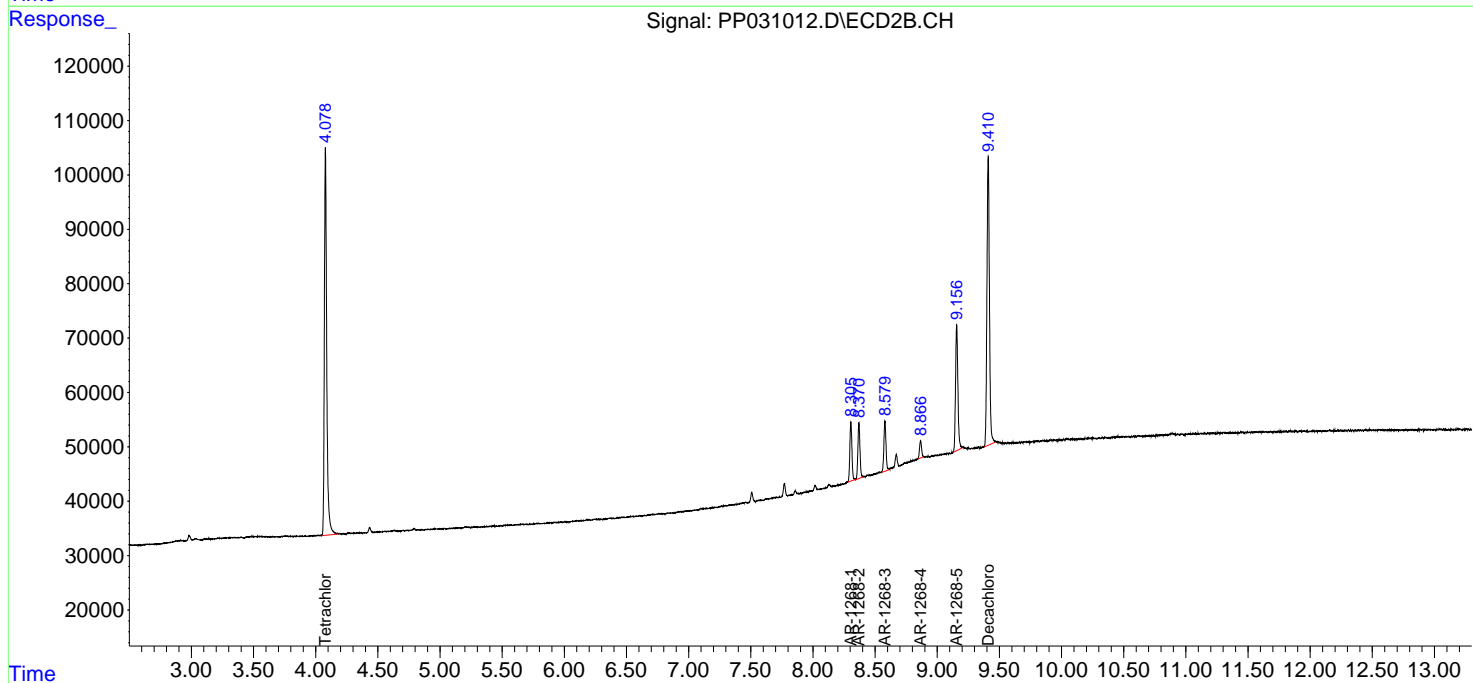
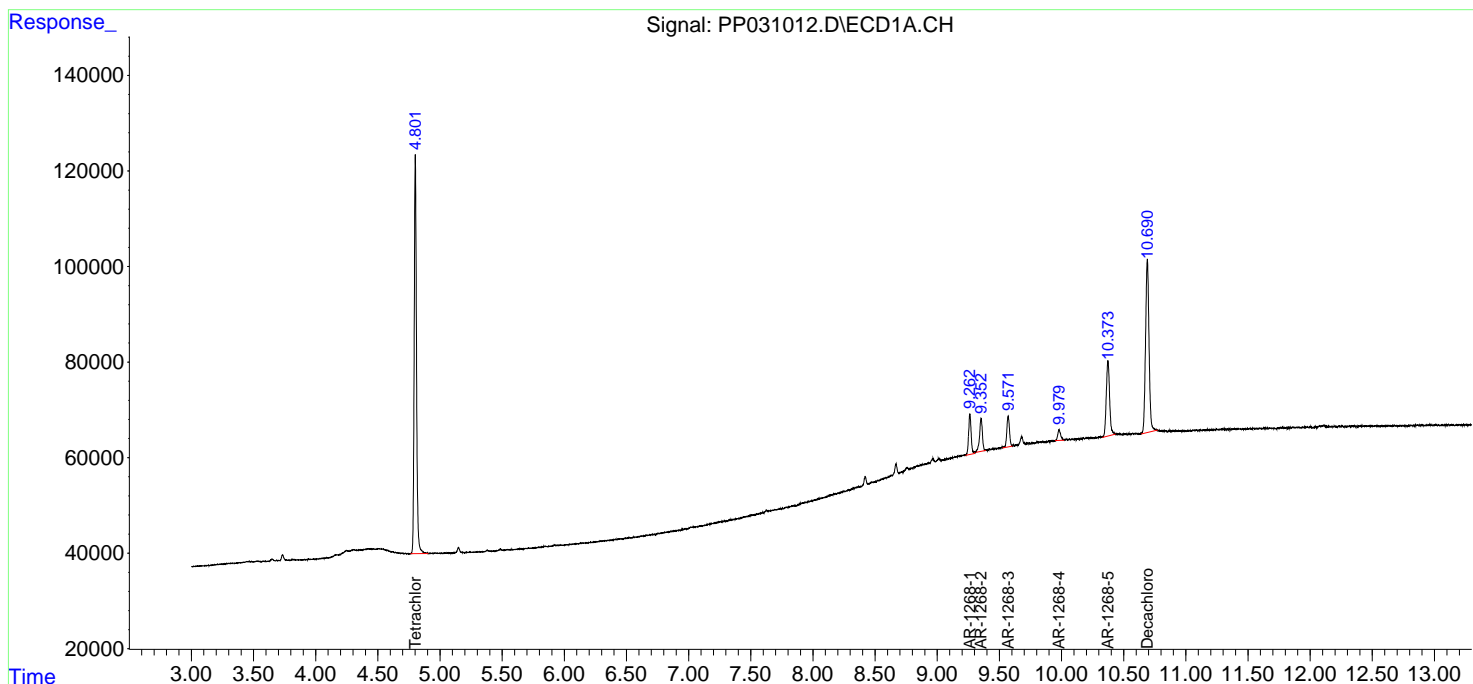
Data Path : Z:\pestpcbsrv\HPCHEM1\ECD_P\Data\PP110120\
 Data File : PP031012.D
 Signal(s) : Signal #1: ECD1A.CH Signal #2: ECD2B.CH
 Acq On : 30 Oct 2020 16:47
 Operator : DD\AJ
 Sample : MDL-AR1268-S-3
 Misc :
 ALS Vial : 13 Sample Multiplier: 1

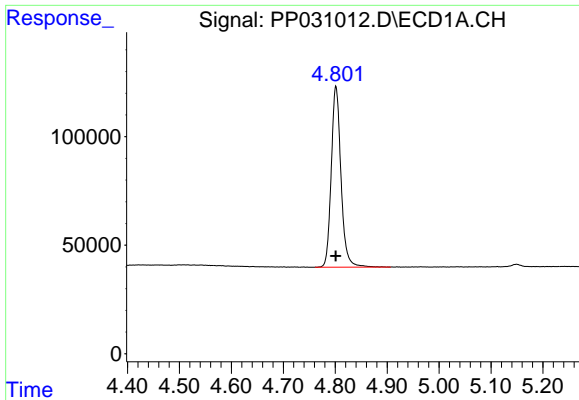
Instrument :
 ECD_P
Client Sampled :
 MDL-AR1268-S-3

Manual Integrations
APPROVED
 Ankita
 11/2/2020 3:00:14 PM

Integration File signal 1: autoint1.e
 Integration File signal 2: autoint2.e
 Quant Time: Oct 31 02:51:07 2020
 Quant Method : Z:\pestpcbsrv\HPCHEM1\ECD_O\methods\AR1268PP110120.M
 Quant Title : GC EXTRACTABLES
 QLast Update : Sat Oct 31 02:37:11 2020
 Response via : Initial Calibration
 Integrator: ChemStation 6890 Scale Mode: Small noise peaks clipped

Volume Inj. : 2 µl
 Signal #1 Phase : ZB-MR1 Signal #2 Phase: ZB-MR2
 Signal #1 Info : 30Mx0.32mmx 0.50µ Signal #2 Info : 30M x 0.32mm x 0.25µm





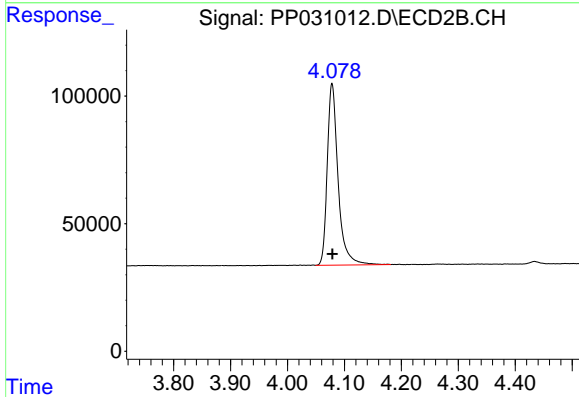
#1 Tetrachloro-m-xylene

R.T.: 4.801 min
 Delta R.T.: 0.000 min
 Response: 1081800
 Conc: 18.15 ng/ml

Instrument :
 ECD_P
 ClientSampleId :
 MDL-AR1268-S-3

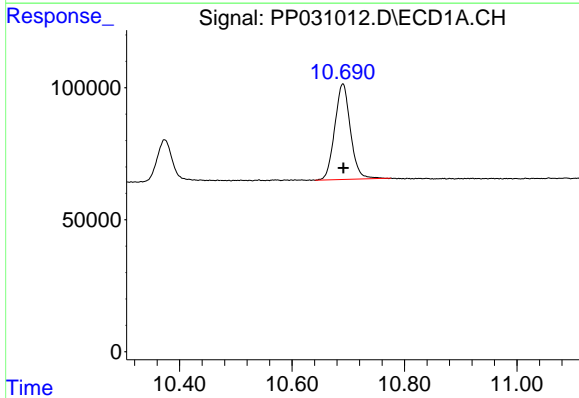
Manual Integrations
 APPROVED

Ankita
 11/2/2020 3:00:14 PM



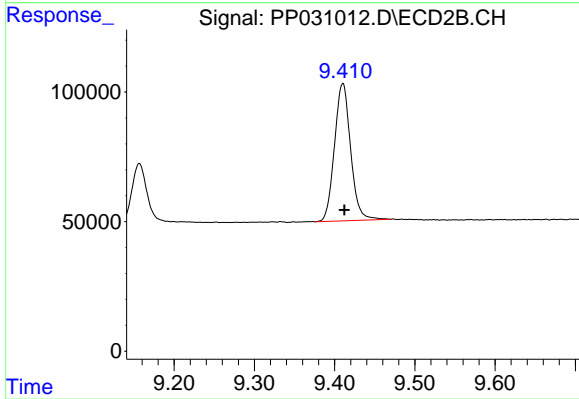
#1 Tetrachloro-m-xylene

R.T.: 4.078 min
 Delta R.T.: 0.000 min
 Response: 942805
 Conc: 17.91 ng/ml



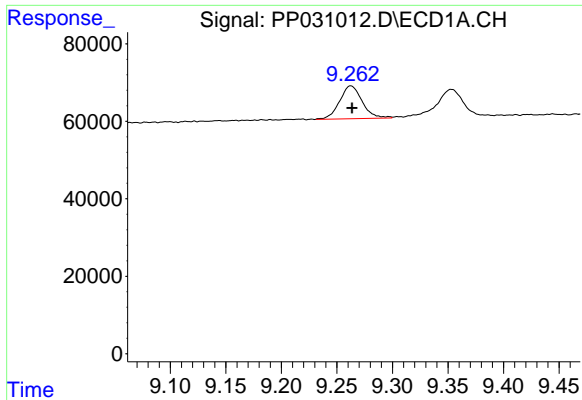
#2 Decachlorobiphenyl

R.T.: 10.690 min
 Delta R.T.: -0.001 min
 Response: 700253
 Conc: 12.20 ng/ml



#2 Decachlorobiphenyl

R.T.: 9.410 min
 Delta R.T.: -0.002 min
 Response: 741379
 Conc: 11.74 ng/ml



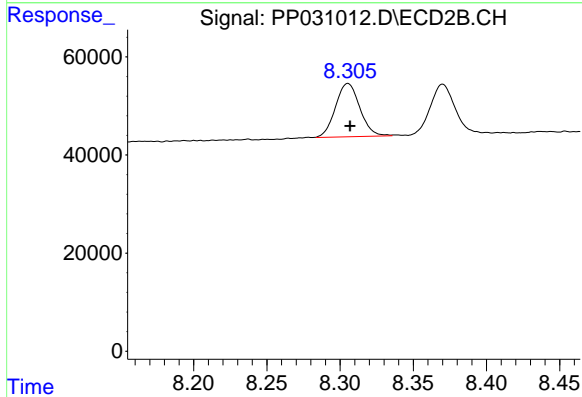
#41 AR-1268-1

R.T.: 9.262 min
 Delta R.T.: -0.002 min
 Response: 120378
 Conc: 24.71 ng/ml m

Instrument :
 ECD_P
 ClientSampleId :
 MDL-AR1268-S-3

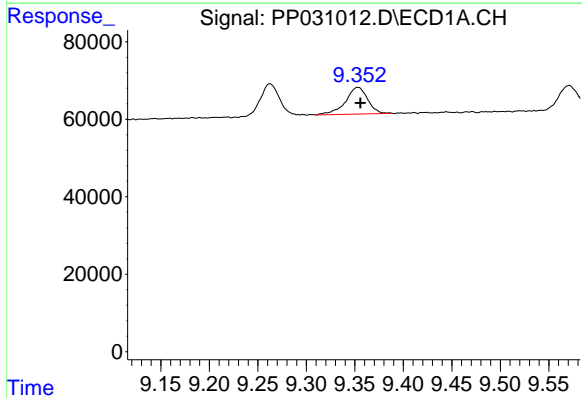
Manual Integrations
 APPROVED

Ankita
 11/2/2020 3:00:14 PM



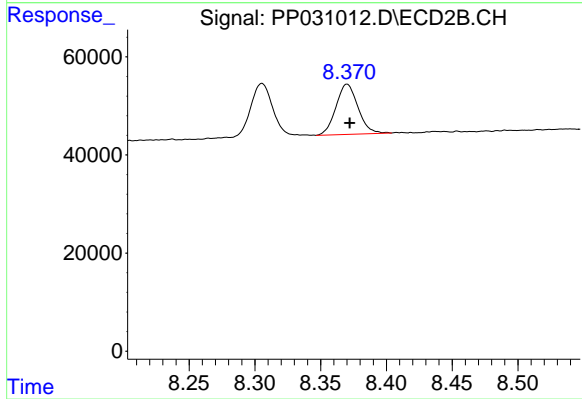
#41 AR-1268-1

R.T.: 8.305 min
 Delta R.T.: -0.002 min
 Response: 125871
 Conc: 23.40 ng/ml m



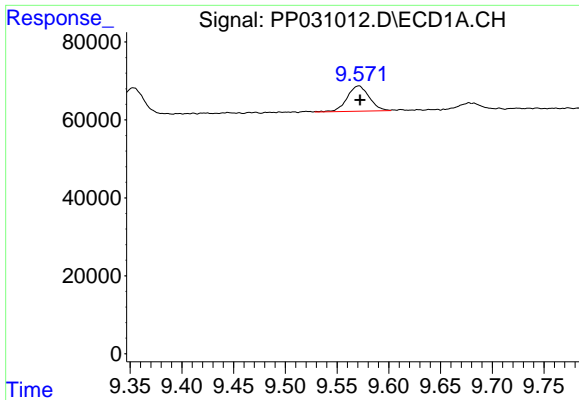
#42 AR-1268-2

R.T.: 9.352 min
 Delta R.T.: -0.003 min
 Response: 110077
 Conc: 22.73 ng/ml m



#42 AR-1268-2

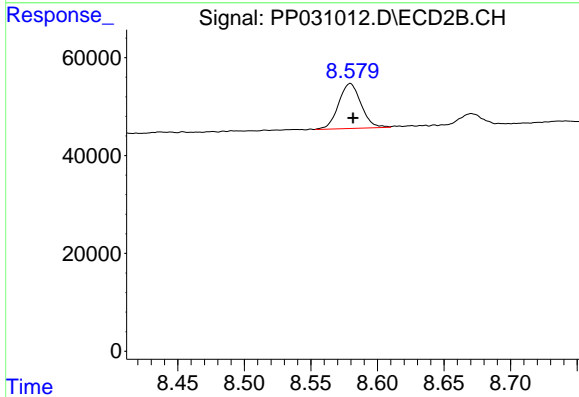
R.T.: 8.370 min
 Delta R.T.: -0.002 min
 Response: 119350
 Conc: 22.61 ng/ml



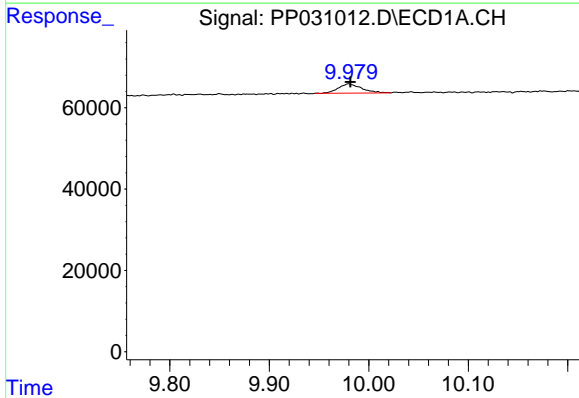
#43 AR-1268-3
 R.T.: 9.571 min
 Delta R.T.: -0.001 min
 Response: 96074
 Conc: 23.74 ng/ml m

Instrument :
 ECD_P
ClientSampleId :
 MDL-AR1268-S-3

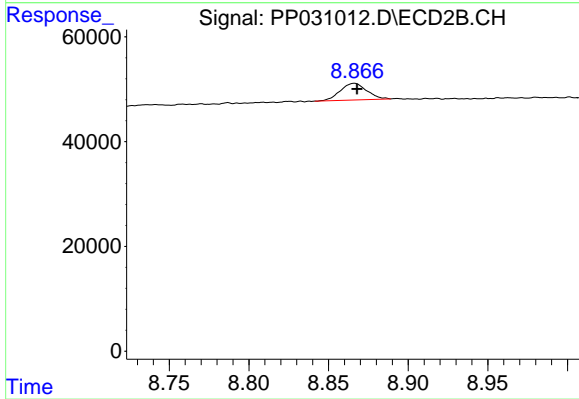
Manual Integrations
APPROVED
 Ankita
 11/2/2020 3:00:14 PM



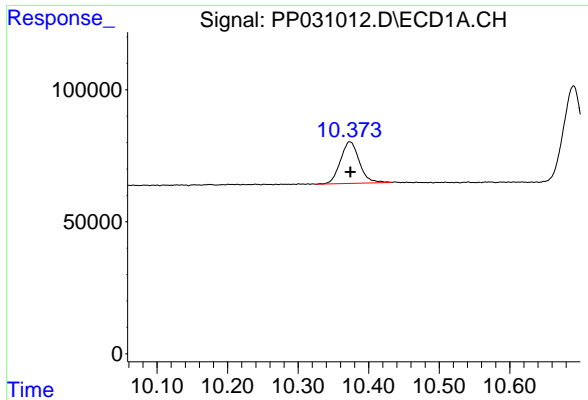
#43 AR-1268-3
 R.T.: 8.580 min
 Delta R.T.: -0.002 min
 Response: 108361
 Conc: 24.57 ng/ml



#44 AR-1268-4
 R.T.: 9.980 min
 Delta R.T.: -0.002 min
 Response: 36656
 Conc: 22.82 ng/ml



#44 AR-1268-4
 R.T.: 8.866 min
 Delta R.T.: -0.001 min
 Response: 36571
 Conc: 20.33 ng/ml



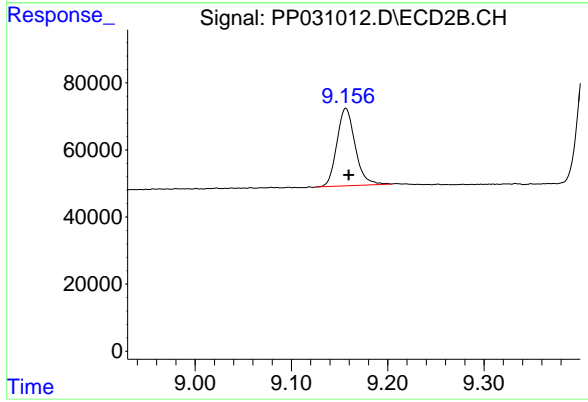
#45 AR-1268-5

R.T.: 10.373 min
Delta R.T.: 0.000 min
Response: 293547
Conc: 22.84 ng/ml

Instrument :
ECD_P
ClientSampleId :
MDL-AR1268-S-3

Manual Integrations
APPROVED

Ankita
11/2/2020 3:00:14 PM



#45 AR-1268-5

R.T.: 9.157 min
Delta R.T.: -0.003 min
Response: 303460
Conc: 21.23 ng/ml