

Data Path : Z:\pestpcbsrv\HPCHEM1\ECD_P\Data\PP110121\
 Data File : PP040600.D
 Signal(s) : Signal #1: ECD1A.CH Signal #2: ECD2B.CH
 Acq On : 01 Nov 2021 18:15
 Operator : AJ\MA
 Sample : AR1660ICC1000
 Misc :
 ALS Vial : 3 Sample Multiplier: 1

Integration File signal 1: autoint1.e
 Integration File signal 2: autoint2.e
 Quant Time: Nov 02 05:35:45 2021
 Quant Method : Z:\pestpcbsrv\HPCHEM1\ECD_P\methods\PP110121.M
 Quant Title : GC EXTRACTABLES
 QLast Update : Tue Nov 02 05:35:16 2021
 Response via : Initial Calibration
 Integrator: ChemStation 6890 Scale Mode: Small noise peaks clipped

Volume Inj. : 2 µl
 Signal #1 Phase : ZB-MR1 Signal #2 Phase: ZB-MR2
 Signal #1 Info : 30Mx0.32mmx 0.50µ Signal #2 Info : 30M x 0.32mm x 0.25µm

Compound	RT#1	RT#2	Resp#1	Resp#2	ng/ml	ng/ml

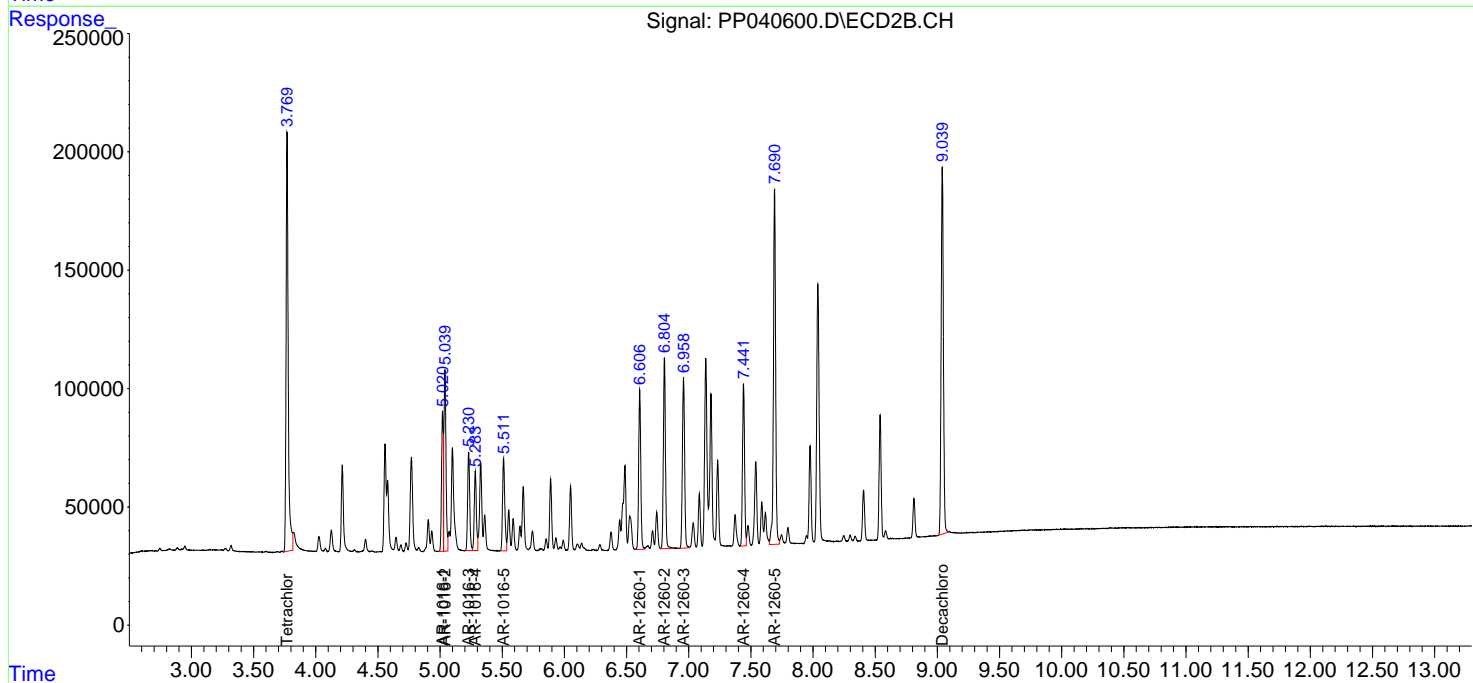
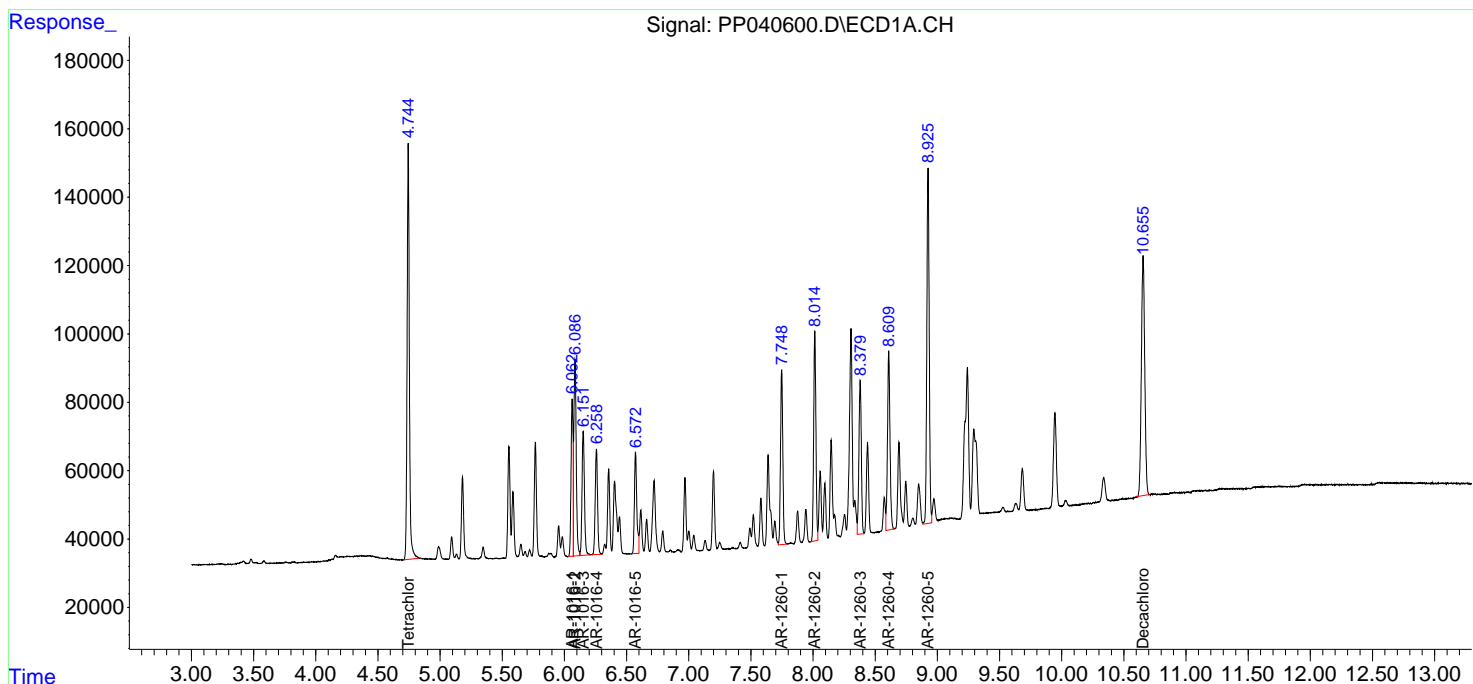
System Monitoring Compounds						
1) SA Tetrachlo...	4.744	3.770	1530207	2119930	90.754	89.979
2) SA Decachlor...	10.655	9.040	1322570	1962119	95.958	90.022
Target Compounds						
3) L1 AR-1016-1	6.063	5.021	514944	586686	887.966	858.331
4) L1 AR-1016-2	6.086	5.039	762476	879061	885.979	877.822
5) L1 AR-1016-3	6.151	5.230	491541	487976	895.115	881.497
6) L1 AR-1016-4	6.258	5.284	404048	390355	904.060	879.184
7) L1 AR-1016-5	6.572	5.511	395748	490413	914.688	893.524
31) L7 AR-1260-1	7.748	6.606	656882	794174	890.223	878.617
32) L7 AR-1260-2	8.014	6.805	764376	931610	875.736	890.283
33) L7 AR-1260-3	8.379	6.959	605751	894372	882.165	891.988
34) L7 AR-1260-4	8.609	7.441	723300	792024	886.489	894.591
35) L7 AR-1260-5	8.925	7.691	1385510	1847240	916.923	918.918

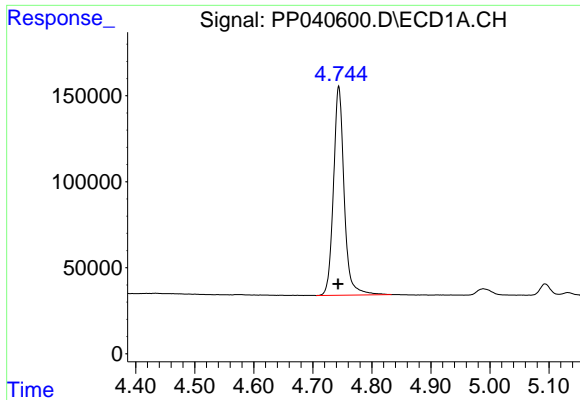
(f)=RT Delta > 1/2 Window (#)=Amounts differ by > 25% (m)=manual int.

Data Path : Z:\pestpcbsrv\HPCHEM1\ECD_P\Data\PP110121\
 Data File : PP040600.D
 Signal(s) : Signal #1: ECD1A.CH Signal #2: ECD2B.CH
 Acq On : 01 Nov 2021 18:15
 Operator : AJ\MA
 Sample : AR1660ICC1000
 Misc :
 ALS Vial : 3 Sample Multiplier: 1

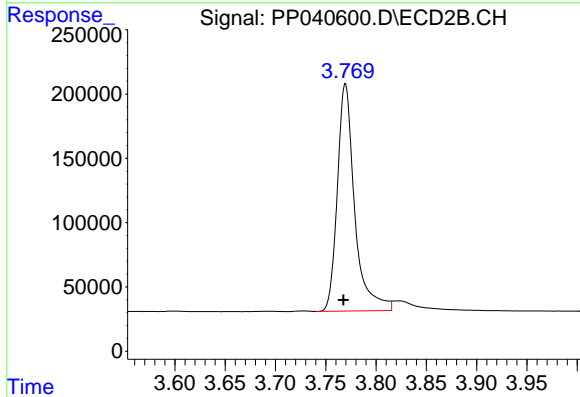
Integration File signal 1: autoint1.e
 Integration File signal 2: autoint2.e
 Quant Time: Nov 02 05:35:45 2021
 Quant Method : Z:\pestpcbsrv\HPCHEM1\ECD_P\methods\PP110121.M
 Quant Title : GC EXTRACTABLES
 QLast Update : Tue Nov 02 05:35:16 2021
 Response via : Initial Calibration
 Integrator: ChemStation 6890 Scale Mode: Small noise peaks clipped

Volume Inj. : 2 µl
 Signal #1 Phase : ZB-MR1 Signal #2 Phase: ZB-MR2
 Signal #1 Info : 30Mx0.32mmx 0.50µ Signal #2 Info : 30M x 0.32mm x 0.25µm

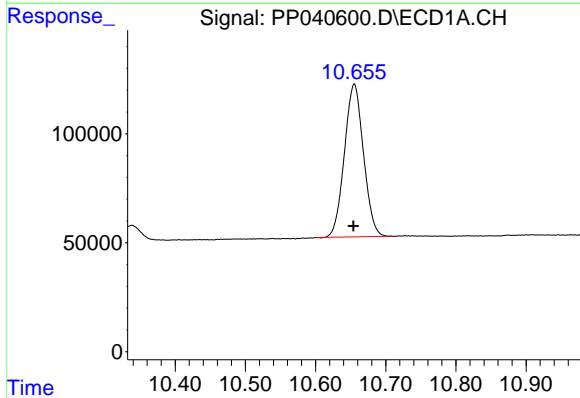




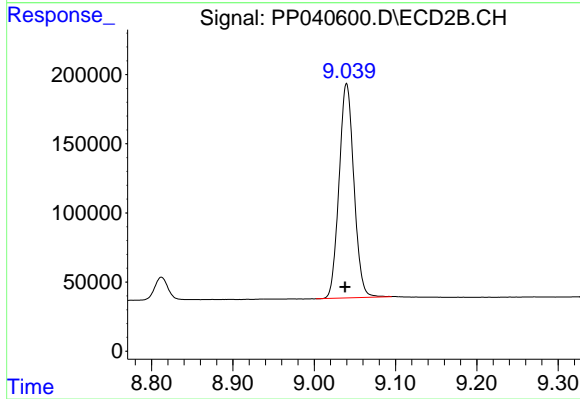
#1 Tetrachloro-m-xylene
R.T.: 4.744 min
Delta R.T.: 0.001 min
Response: 1530207
Conc: 90.75 ng/ml



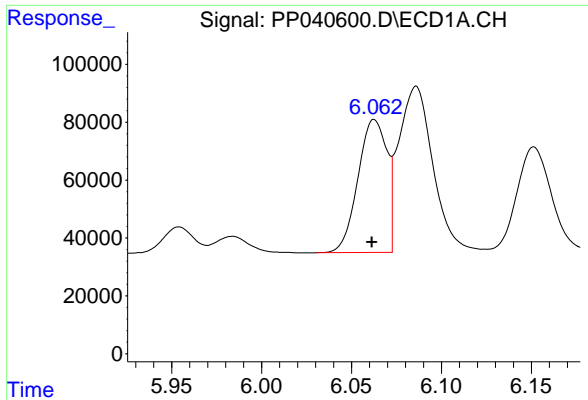
#1 Tetrachloro-m-xylene
R.T.: 3.770 min
Delta R.T.: 0.002 min
Response: 2119930
Conc: 89.98 ng/ml



#2 Decachlorobiphenyl
R.T.: 10.655 min
Delta R.T.: 0.001 min
Response: 1322570
Conc: 95.96 ng/ml

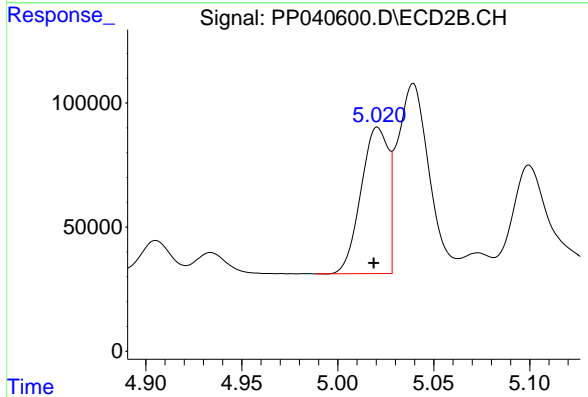


#2 Decachlorobiphenyl
R.T.: 9.040 min
Delta R.T.: 0.002 min
Response: 1962119
Conc: 90.02 ng/ml



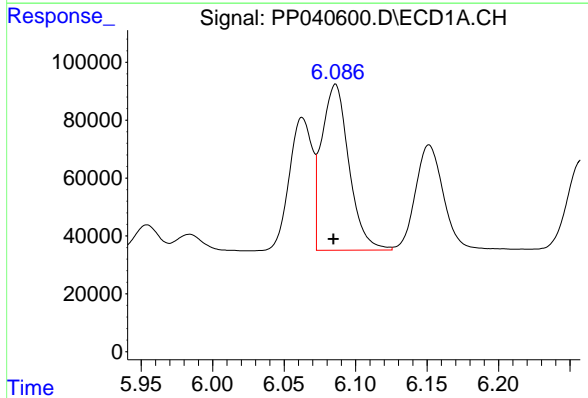
#3 AR-1016-1

R.T.: 6.063 min
Delta R.T.: 0.001 min
Response: 514944
Conc: 887.97 ng/ml



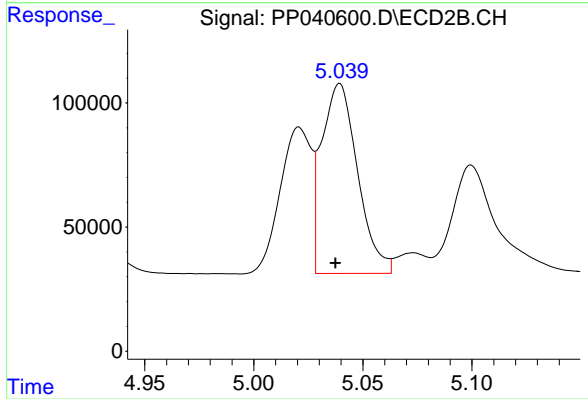
#3 AR-1016-1

R.T.: 5.021 min
Delta R.T.: 0.002 min
Response: 586686
Conc: 858.33 ng/ml



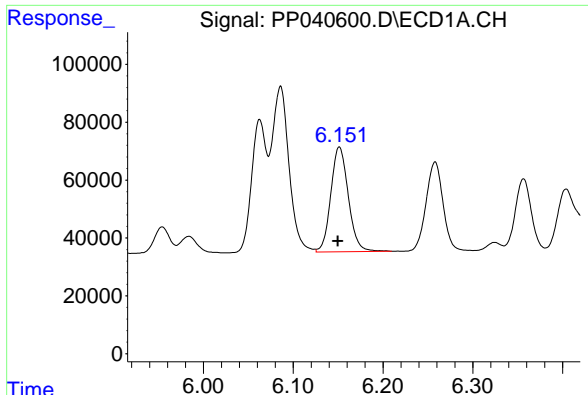
#4 AR-1016-2

R.T.: 6.086 min
Delta R.T.: 0.001 min
Response: 762476
Conc: 885.98 ng/ml



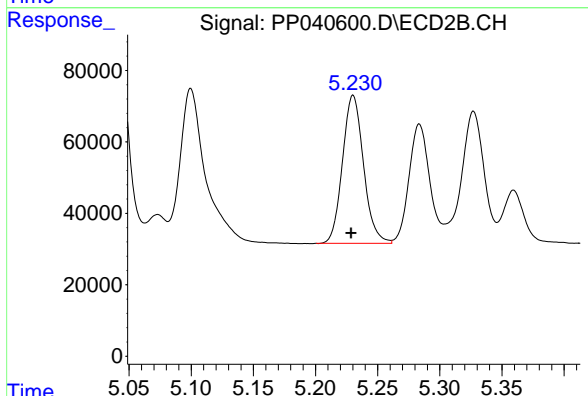
#4 AR-1016-2

R.T.: 5.039 min
Delta R.T.: 0.002 min
Response: 879061
Conc: 877.82 ng/ml



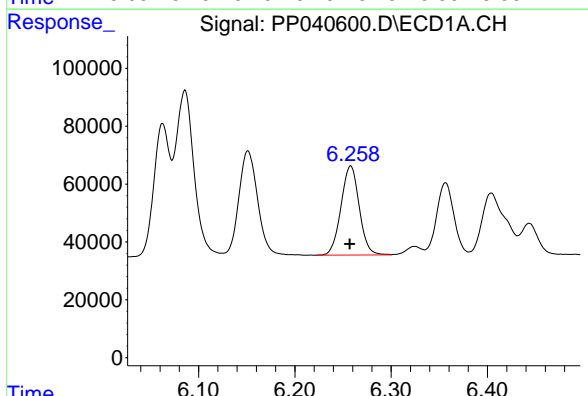
#5 AR-1016-3

R.T.: 6.151 min
Delta R.T.: 0.002 min
Response: 491541
Conc: 895.12 ng/ml



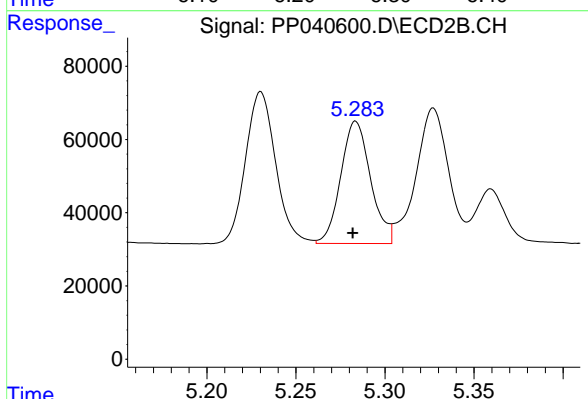
#5 AR-1016-3

R.T.: 5.230 min
Delta R.T.: 0.002 min
Response: 487976
Conc: 881.50 ng/ml



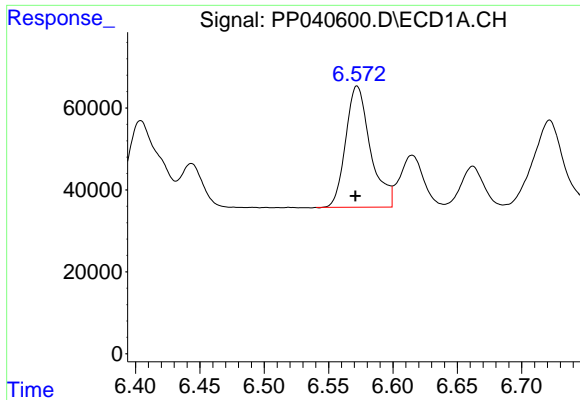
#6 AR-1016-4

R.T.: 6.258 min
Delta R.T.: 0.001 min
Response: 404048
Conc: 904.06 ng/ml



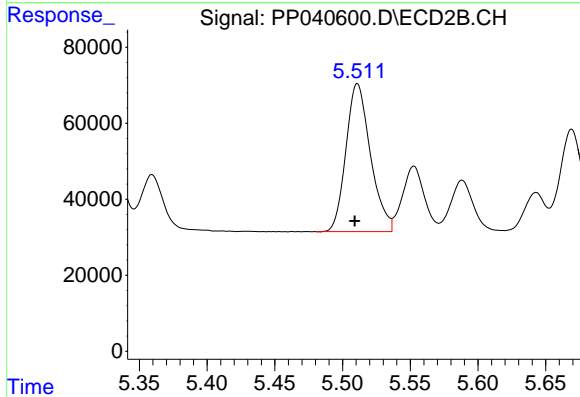
#6 AR-1016-4

R.T.: 5.284 min
Delta R.T.: 0.002 min
Response: 390355
Conc: 879.18 ng/ml



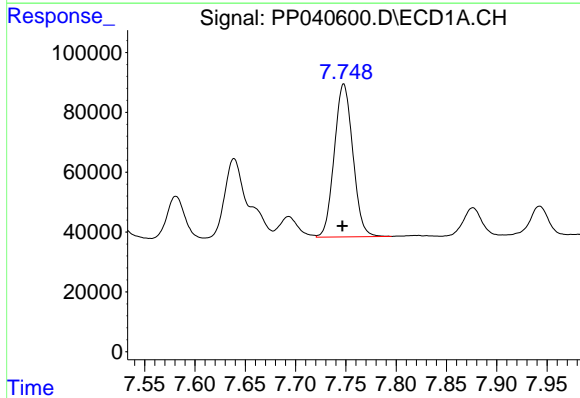
#7 AR-1016-5

R.T.: 6.572 min
Delta R.T.: 0.001 min
Response: 395748
Conc: 914.69 ng/ml



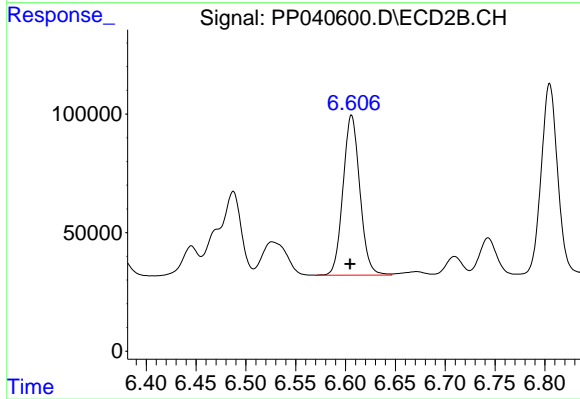
#7 AR-1016-5

R.T.: 5.511 min
Delta R.T.: 0.002 min
Response: 490413
Conc: 893.52 ng/ml



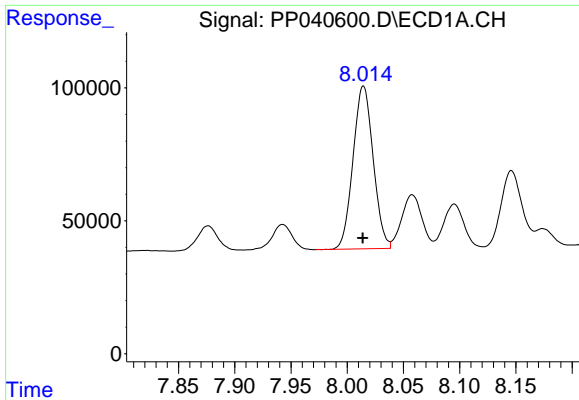
#31 AR-1260-1

R.T.: 7.748 min
Delta R.T.: 0.001 min
Response: 656882
Conc: 890.22 ng/ml



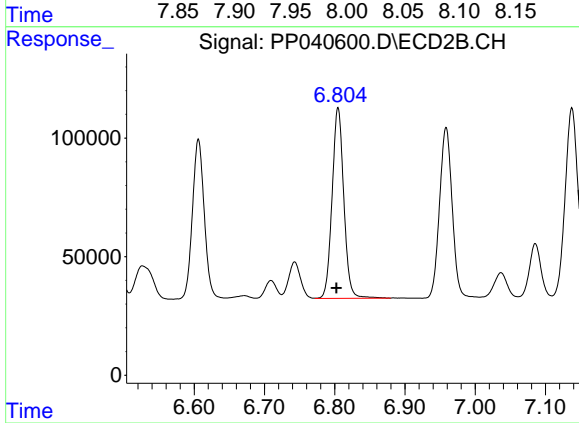
#31 AR-1260-1

R.T.: 6.606 min
Delta R.T.: 0.002 min
Response: 794174
Conc: 878.62 ng/ml



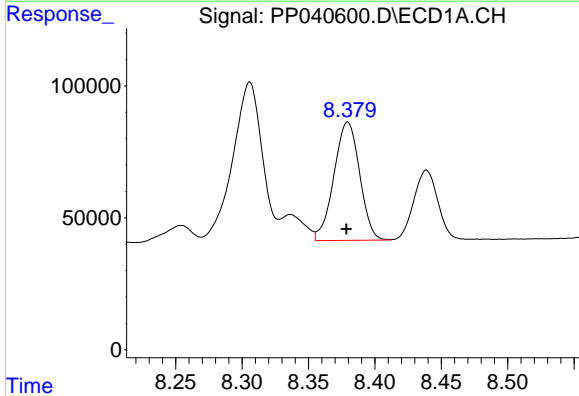
#32 AR-1260-2

R.T.: 8.014 min
Delta R.T.: 0.000 min
Response: 764376
Conc: 875.74 ng/ml



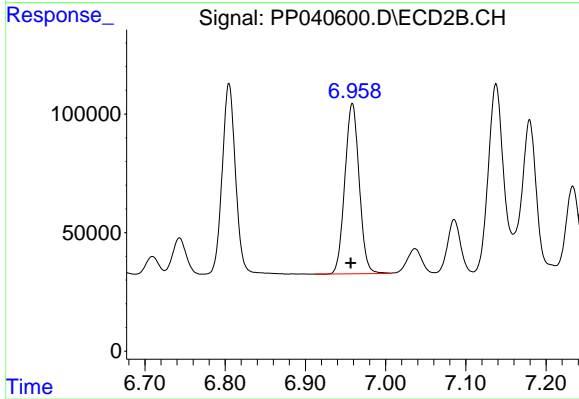
#32 AR-1260-2

R.T.: 6.805 min
Delta R.T.: 0.002 min
Response: 931610
Conc: 890.28 ng/ml



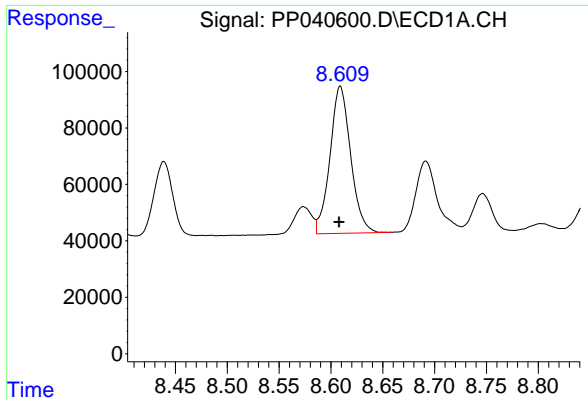
#33 AR-1260-3

R.T.: 8.379 min
Delta R.T.: 0.000 min
Response: 605751
Conc: 882.16 ng/ml



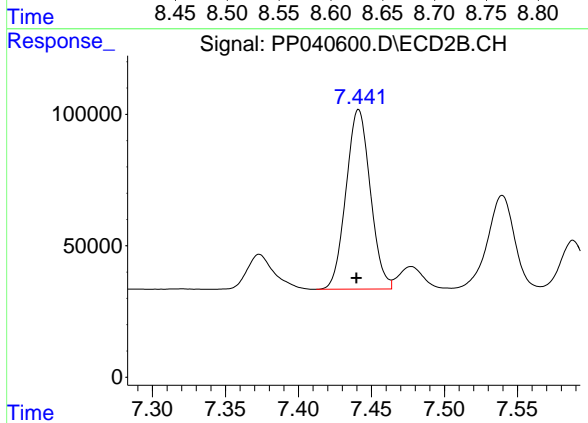
#33 AR-1260-3

R.T.: 6.959 min
Delta R.T.: 0.002 min
Response: 894372
Conc: 891.99 ng/ml



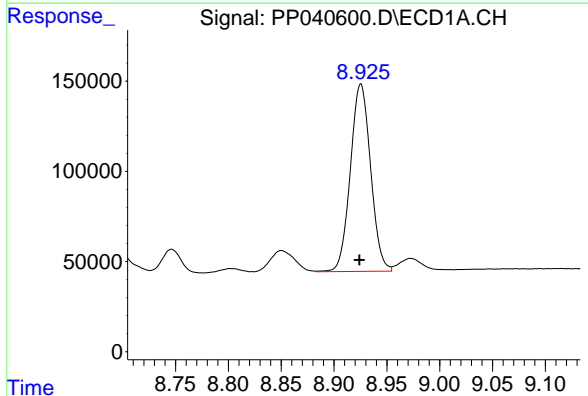
#34 AR-1260-4

R.T.: 8.609 min
Delta R.T.: 0.001 min
Response: 723300
Conc: 886.49 ng/ml



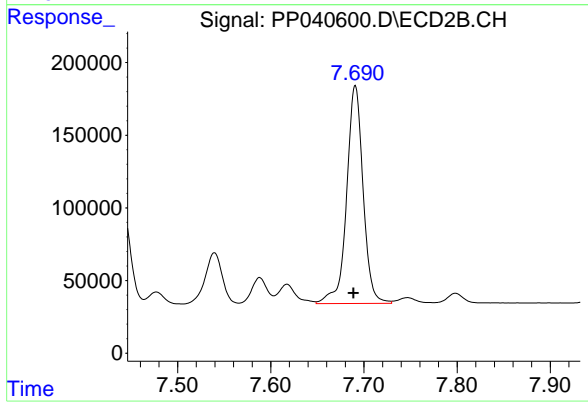
#34 AR-1260-4

R.T.: 7.441 min
Delta R.T.: 0.002 min
Response: 792024
Conc: 894.59 ng/ml



#35 AR-1260-5

R.T.: 8.925 min
Delta R.T.: 0.001 min
Response: 1385510
Conc: 916.92 ng/ml



#35 AR-1260-5

R.T.: 7.691 min
Delta R.T.: 0.002 min
Response: 1847240
Conc: 918.92 ng/ml