

Data Path : Z:\pestpcbsrv\HPCHEM1\ECD\_P\Data\PP110121\  
 Data File : PP040606.D  
 Signal(s) : Signal #1: ECD1A.CH Signal #2: ECD2B.CH  
 Acq On : 01 Nov 2021 19:55  
 Operator : AJ\MA  
 Sample : AR1232ICC500  
 Misc :  
 ALS Vial : 9 Sample Multiplier: 1

Integration File signal 1: autoint1.e  
 Integration File signal 2: autoint2.e  
 Quant Time: Nov 02 02:19:32 2021  
 Quant Method : Z:\pestpcbsrv\HPCHEM1\ECD\_P\methods\PP110121.M  
 Quant Title : GC EXTRACTABLES  
 QLast Update : Tue Nov 02 02:19:16 2021  
 Response via : Initial Calibration  
 Integrator: ChemStation 6890 Scale Mode: Small noise peaks clipped

Volume Inj. : 2 µl  
 Signal #1 Phase : ZB-MR1 Signal #2 Phase: ZB-MR2  
 Signal #1 Info : 30Mx0.32mmx 0.50µ Signal #2 Info : 30M x 0.32mm x 0.25µm

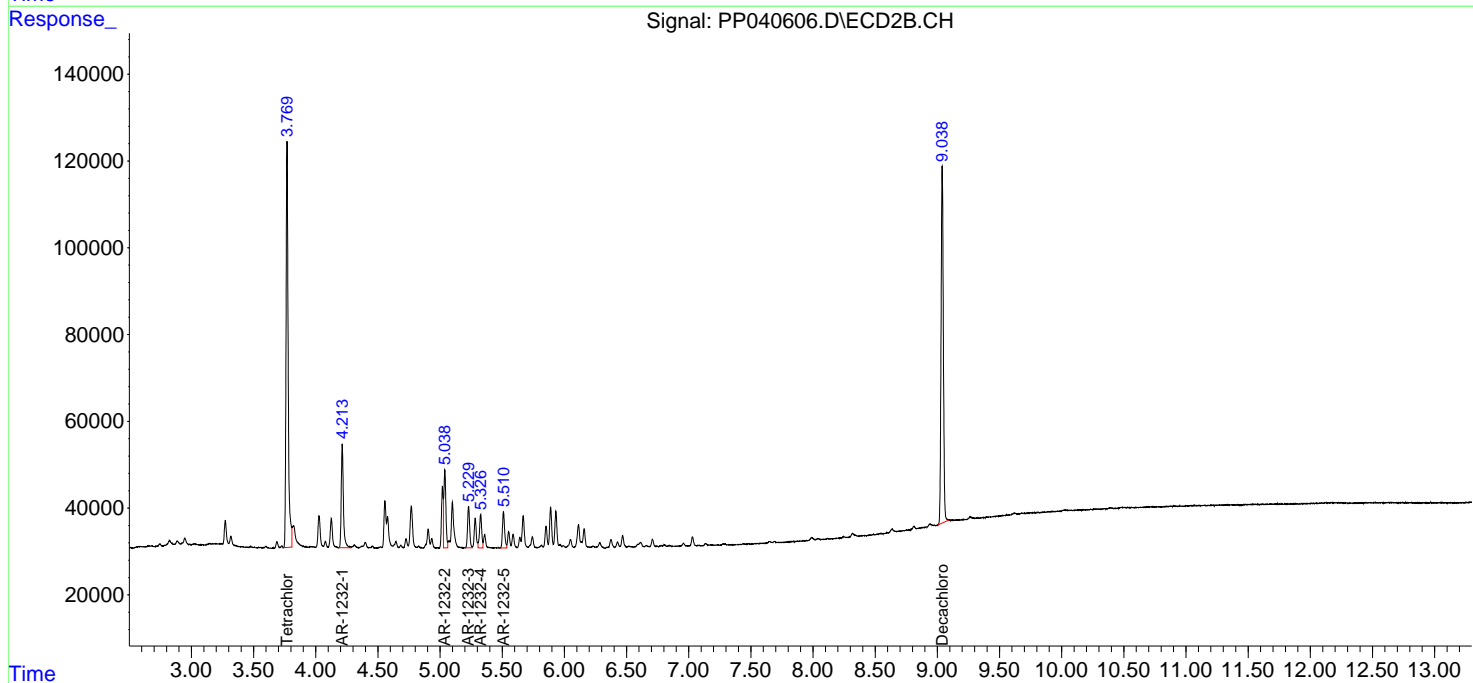
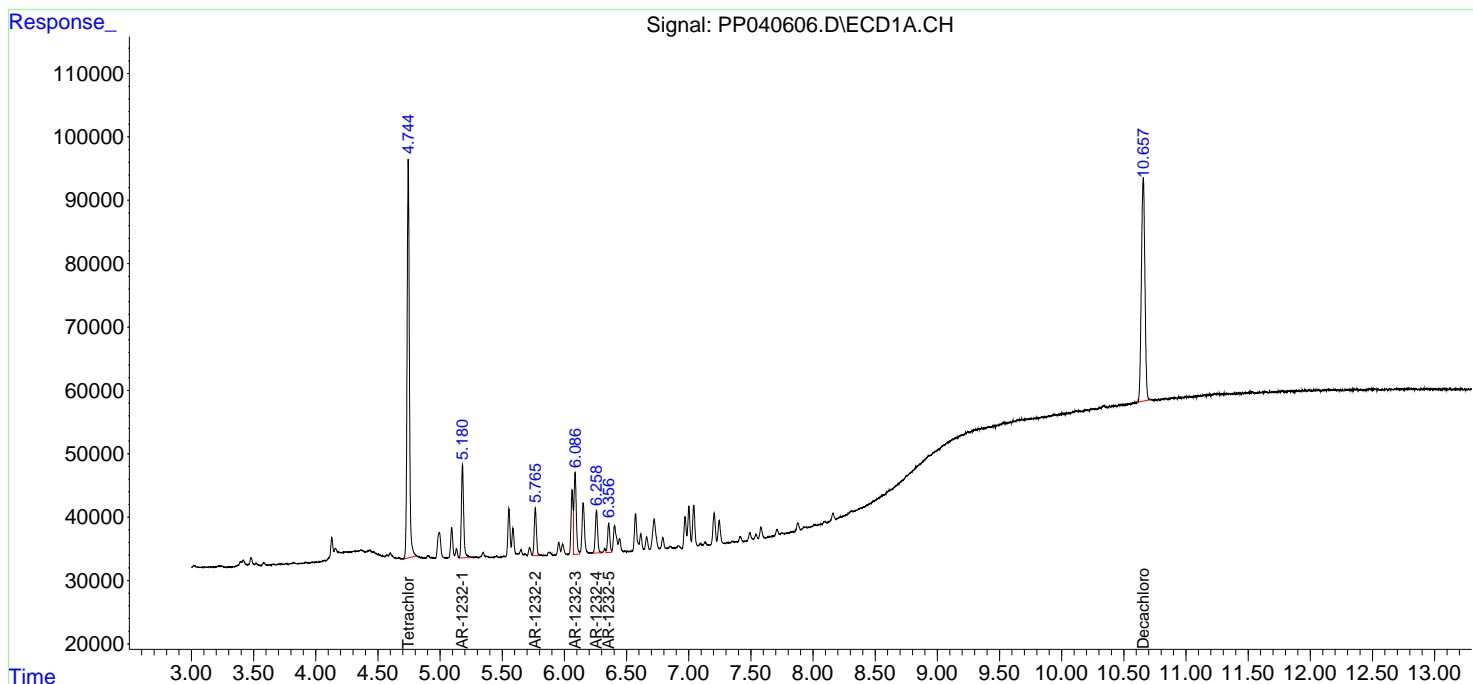
Compound	RT#1	RT#2	Resp#1	Resp#2	ng/ml	ng/ml
-----						
System Monitoring Compounds						
1) SA Tetrachlo...	4.744	3.769	811399	1115760	50.000	50.000
2) SA Decachlor...	10.656	9.039	691505	1046507	50.000	50.000
Target Compounds						
11) L3 AR-1232-1	5.180	4.213	186993	286039	500.000	500.000
12) L3 AR-1232-2	5.766	5.038	92872	205372	500.000	500.000
13) L3 AR-1232-3	6.086	5.229	169760	110317	500.000	500.000
14) L3 AR-1232-4	6.258	5.327	87088	95762	500.000	500.000
15) L3 AR-1232-5	6.357	5.510	57129	100908	500.000	500.000
-----						

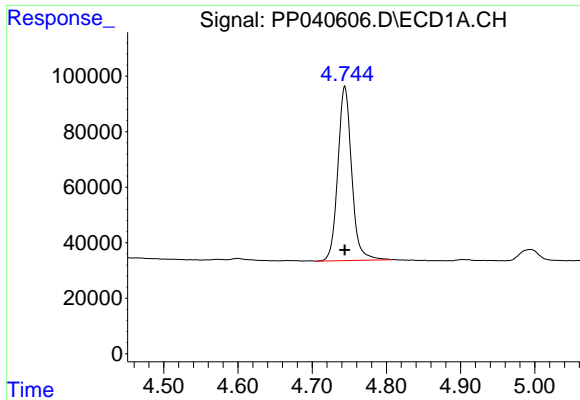
(f)=RT Delta > 1/2 Window (#)=Amounts differ by > 25% (m)=manual int.

Data Path : Z:\pestpcbsrv\HPCHEM1\ECD\_P\Data\PP110121\  
 Data File : PP040606.D  
 Signal(s) : Signal #1: ECD1A.CH Signal #2: ECD2B.CH  
 Acq On : 01 Nov 2021 19:55  
 Operator : AJ\MA  
 Sample : AR1232ICC500  
 Misc :  
 ALS Vial : 9 Sample Multiplier: 1

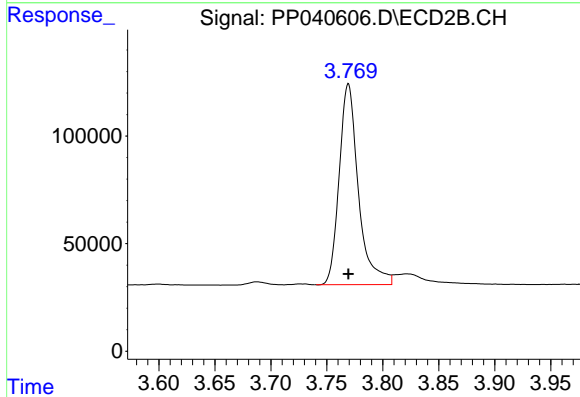
Integration File signal 1: autoint1.e  
 Integration File signal 2: autoint2.e  
 Quant Time: Nov 02 02:19:32 2021  
 Quant Method : Z:\pestpcbsrv\HPCHEM1\ECD\_P\methods\PP110121.M  
 Quant Title : GC EXTRACTABLES  
 QLast Update : Tue Nov 02 02:19:16 2021  
 Response via : Initial Calibration  
 Integrator: ChemStation 6890 Scale Mode: Small noise peaks clipped

Volume Inj. : 2 µl  
 Signal #1 Phase : ZB-MR1 Signal #2 Phase: ZB-MR2  
 Signal #1 Info : 30Mx0.32mmx 0.50µ Signal #2 Info : 30M x 0.32mm x 0.25µm

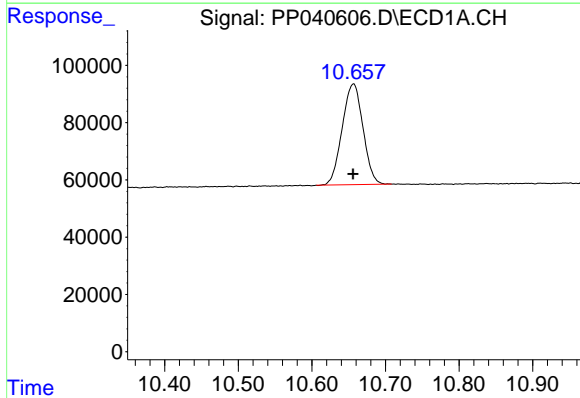




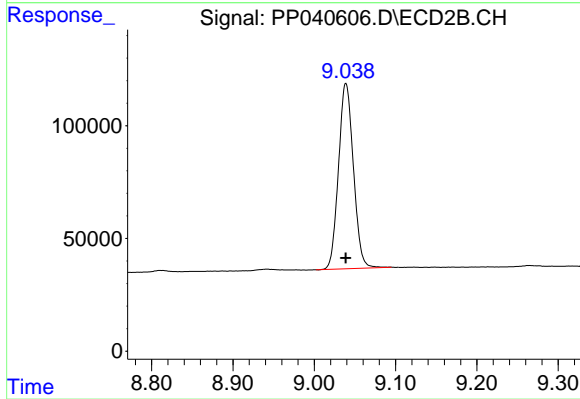
#1 Tetrachloro-m-xylene  
R.T.: 4.744 min  
Delta R.T.: 0.000 min  
Response: 811399  
Conc: 50.00 ng/ml



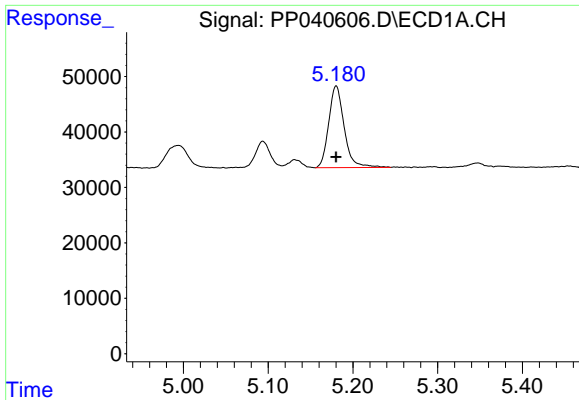
#1 Tetrachloro-m-xylene  
R.T.: 3.769 min  
Delta R.T.: 0.000 min  
Response: 1115760  
Conc: 50.00 ng/ml



#2 Decachlorobiphenyl  
R.T.: 10.656 min  
Delta R.T.: 0.000 min  
Response: 691505  
Conc: 50.00 ng/ml

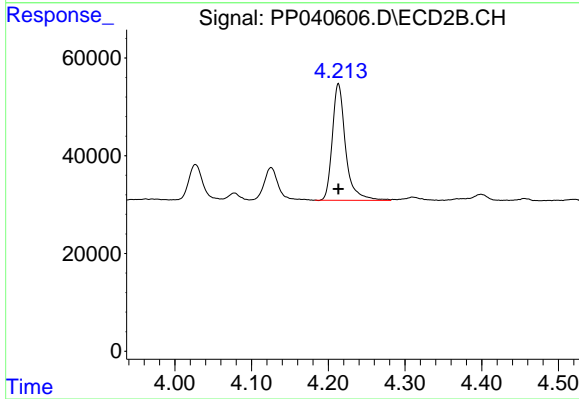


#2 Decachlorobiphenyl  
R.T.: 9.039 min  
Delta R.T.: 0.000 min  
Response: 1046507  
Conc: 50.00 ng/ml



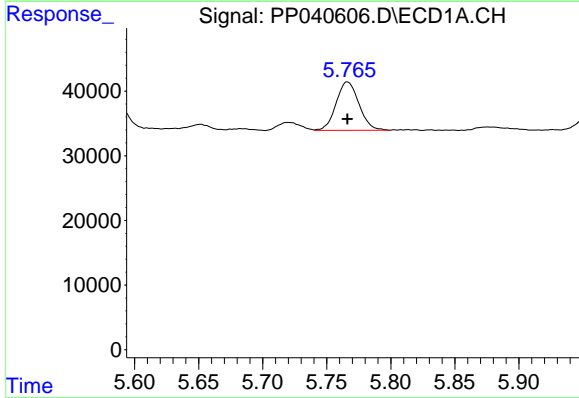
#11 AR-1232-1

R.T.: 5.180 min  
Delta R.T.: 0.000 min  
Response: 186993  
Conc: 500.00 ng/ml



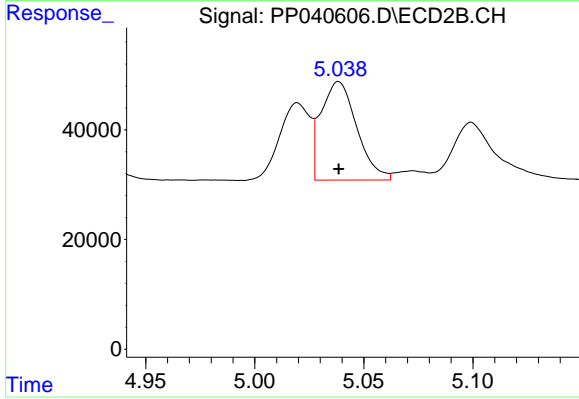
#11 AR-1232-1

R.T.: 4.213 min  
Delta R.T.: 0.000 min  
Response: 286039  
Conc: 500.00 ng/ml



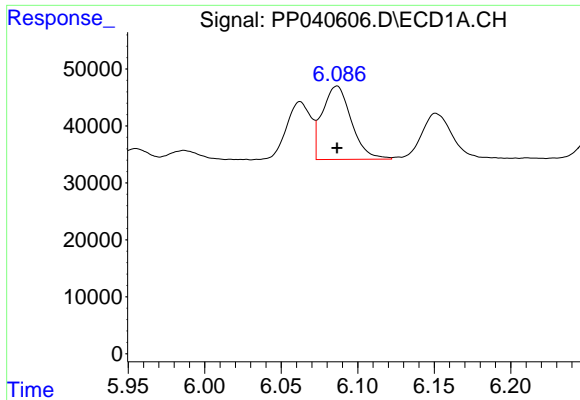
#12 AR-1232-2

R.T.: 5.766 min  
Delta R.T.: 0.000 min  
Response: 92872  
Conc: 500.00 ng/ml



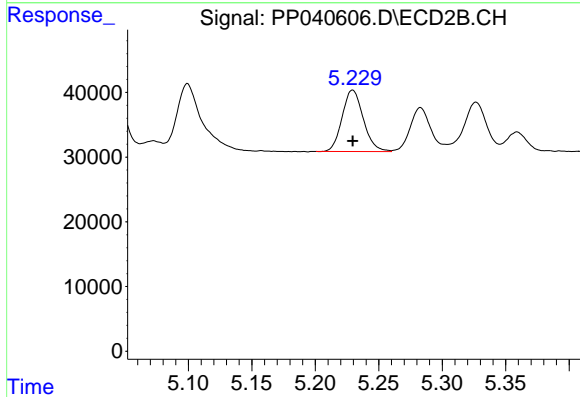
#12 AR-1232-2

R.T.: 5.038 min  
Delta R.T.: 0.000 min  
Response: 205372  
Conc: 500.00 ng/ml



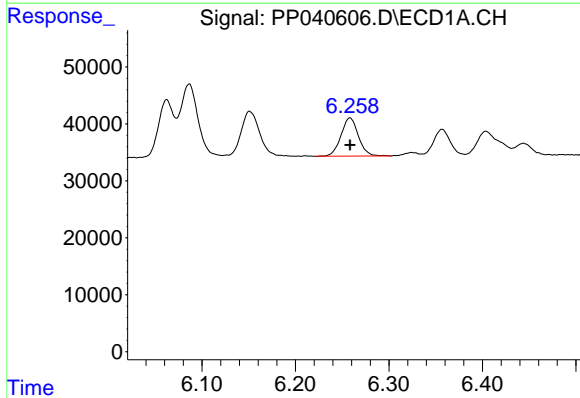
#13 AR-1232-3

R.T.: 6.086 min  
 Delta R.T.: 0.000 min  
 Response: 169760  
 Conc: 500.00 ng/ml



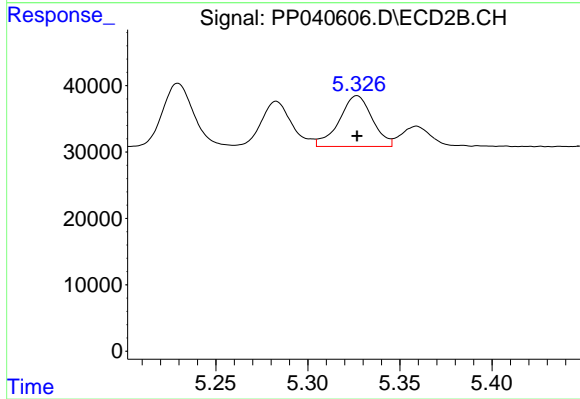
#13 AR-1232-3

R.T.: 5.229 min  
 Delta R.T.: 0.000 min  
 Response: 110317  
 Conc: 500.00 ng/ml



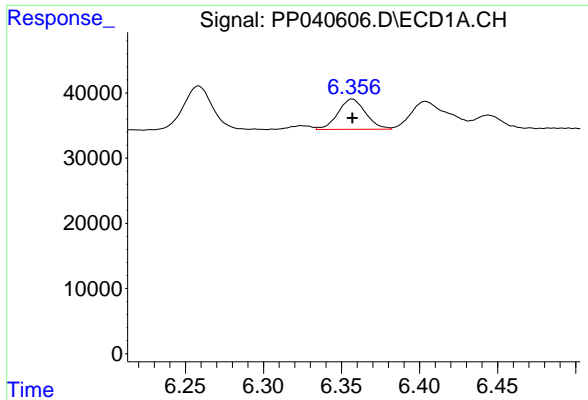
#14 AR-1232-4

R.T.: 6.258 min  
 Delta R.T.: 0.000 min  
 Response: 87088  
 Conc: 500.00 ng/ml



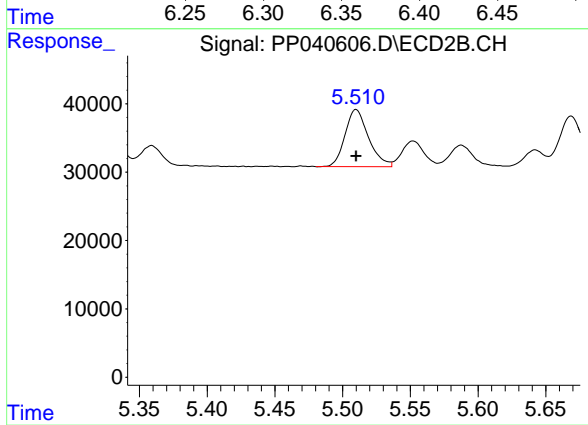
#14 AR-1232-4

R.T.: 5.327 min  
 Delta R.T.: 0.000 min  
 Response: 95762  
 Conc: 500.00 ng/ml



#15 AR-1232-5

R.T.: 6.357 min  
Delta R.T.: 0.000 min  
Response: 57129  
Conc: 500.00 ng/ml



#15 AR-1232-5

R.T.: 5.510 min  
Delta R.T.: 0.000 min  
Response: 100908  
Conc: 500.00 ng/ml