

Data Path : Z:\pestpcbsrv\HPCHEM1\ECD_P\Data\PP110121\
 Data File : PP040616.D
 Signal(s) : Signal #1: ECD1A.CH Signal #2: ECD2B.CH
 Acq On : 01 Nov 2021 22:42
 Operator : AJ\MA
 Sample : AR1248IC050
 Misc :
 ALS Vial : 19 Sample Multiplier: 1

Integration File signal 1: autoint1.e
 Integration File signal 2: autoint2.e
 Quant Time: Nov 02 02:53:54 2021
 Quant Method : Z:\pestpcbsrv\HPCHEM1\ECD_P\methods\PP110121.M
 Quant Title : GC EXTRACTABLES
 QLast Update : Tue Nov 02 02:52:37 2021
 Response via : Initial Calibration
 Integrator: ChemStation 6890 Scale Mode: Small noise peaks clipped

Volume Inj. : 2 µl
 Signal #1 Phase : ZB-MR1 Signal #2 Phase: ZB-MR2
 Signal #1 Info : 30Mx0.32mmx 0.50µ Signal #2 Info : 30M x 0.32mm x 0.25µm

Compound	RT#1	RT#2	Resp#1	Resp#2	ng/ml	ng/ml

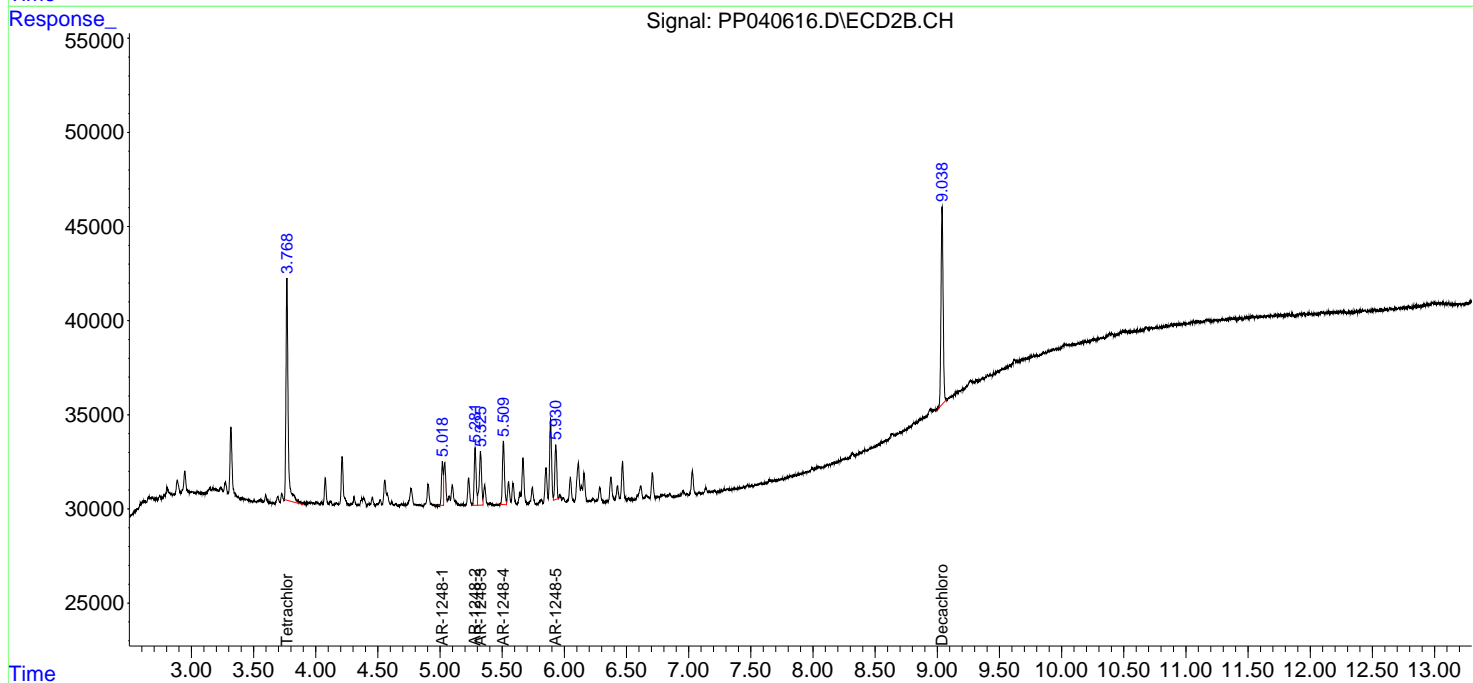
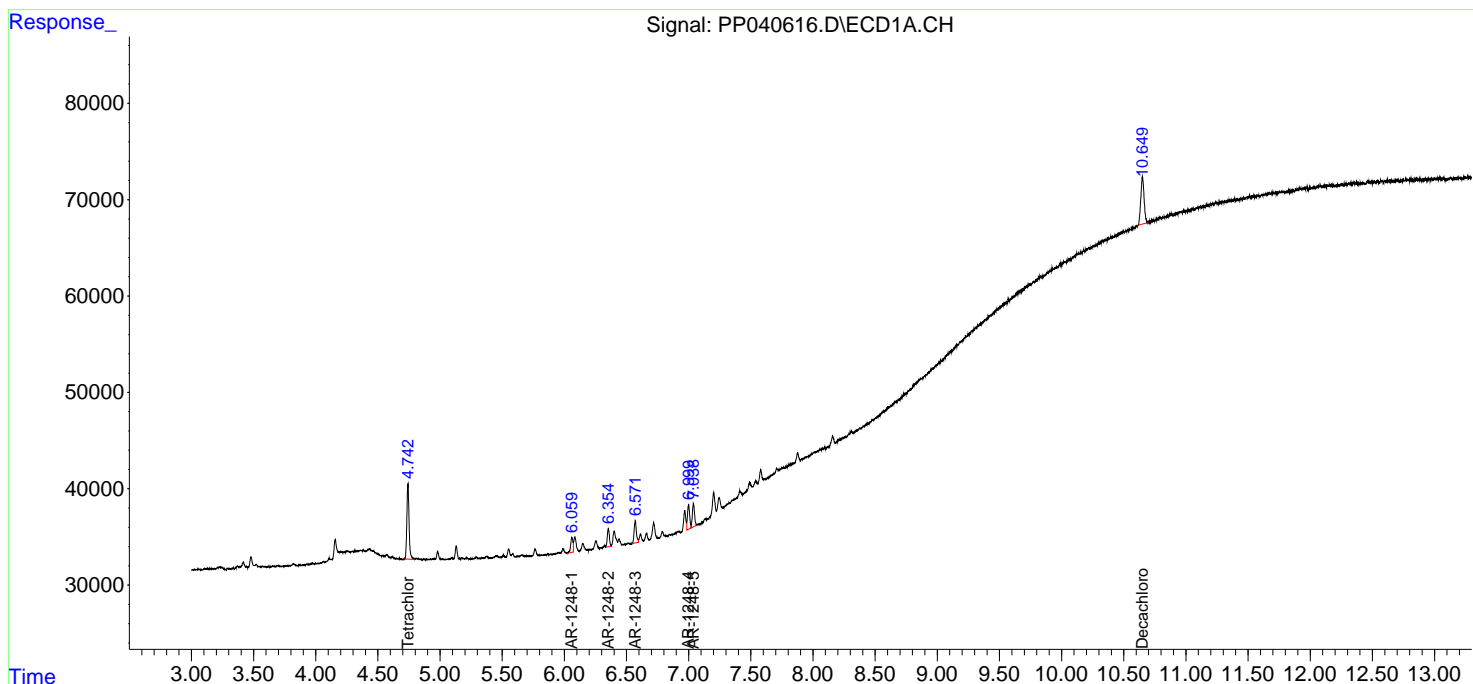
System Monitoring Compounds						
1) SA Tetrachlo...	4.742	3.768	96534	145049	5.973	6.024
2) SA Decachlor...	10.650	9.039	89194	124065	5.400	5.912
Target Compounds						
21) L5 AR-1248-1	6.059	5.019	18823	22271	61.734	60.292
22) L5 AR-1248-2	6.354	5.282	21985	33515	52.338	63.856
23) L5 AR-1248-3	6.571	5.326	28275	37203	54.666	68.080
24) L5 AR-1248-4	6.999	5.510	31113	38369	54.923	61.074
25) L5 AR-1248-5	7.038	5.931	29470	31021	52.083	52.837

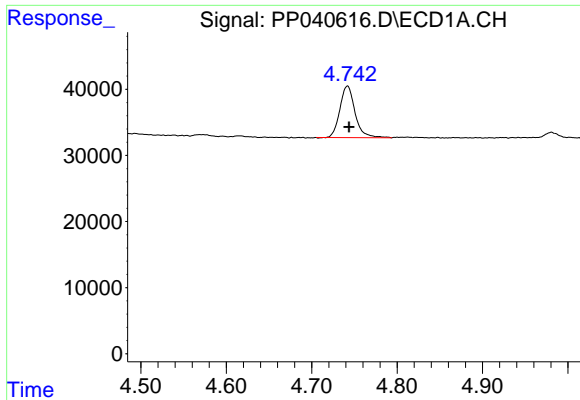
(f)=RT Delta > 1/2 Window (#)=Amounts differ by > 25% (m)=manual int.

Data Path : Z:\pestpcbsrv\HPCHEM1\ECD_P\Data\PP110121\
 Data File : PP040616.D
 Signal(s) : Signal #1: ECD1A.CH Signal #2: ECD2B.CH
 Acq On : 01 Nov 2021 22:42
 Operator : AJ\MA
 Sample : AR1248IC050
 Misc :
 ALS Vial : 19 Sample Multiplier: 1

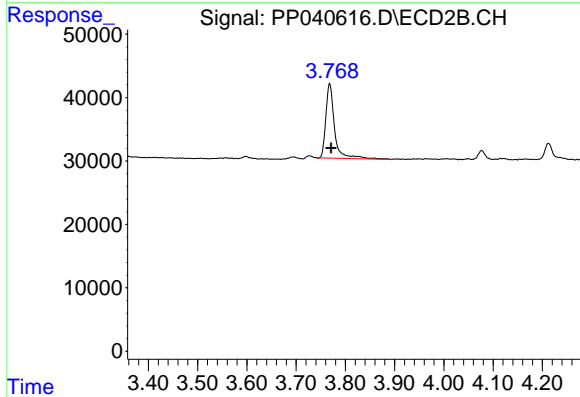
Integration File signal 1: autoint1.e
 Integration File signal 2: autoint2.e
 Quant Time: Nov 02 02:53:54 2021
 Quant Method : Z:\pestpcbsrv\HPCHEM1\ECD_P\methods\PP110121.M
 Quant Title : GC EXTRACTABLES
 QLast Update : Tue Nov 02 02:52:37 2021
 Response via : Initial Calibration
 Integrator: ChemStation 6890 Scale Mode: Small noise peaks clipped

Volume Inj. : 2 µl
 Signal #1 Phase : ZB-MR1 Signal #2 Phase: ZB-MR2
 Signal #1 Info : 30Mx0.32mmx 0.50µ Signal #2 Info : 30M x 0.32mm x 0.25µm

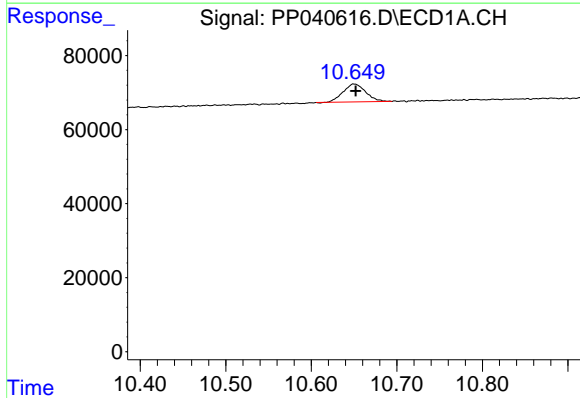




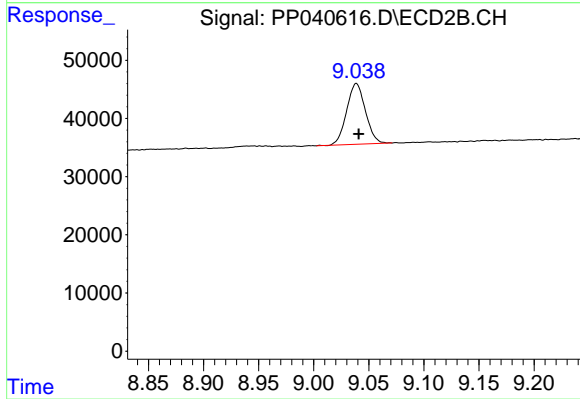
#1 Tetrachloro-m-xylene
 R.T.: 4.742 min
 Delta R.T.: -0.002 min
 Response: 96534
 Conc: 5.97 ng/ml



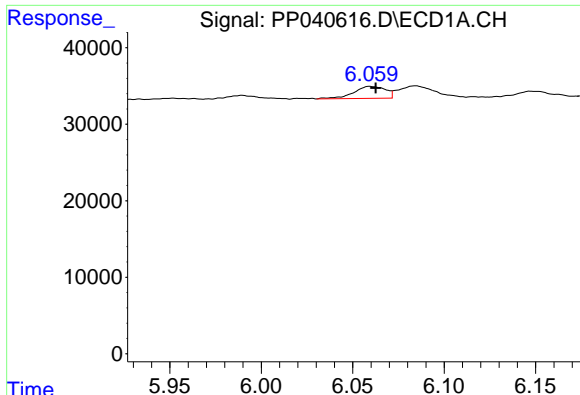
#1 Tetrachloro-m-xylene
 R.T.: 3.768 min
 Delta R.T.: -0.003 min
 Response: 145049
 Conc: 6.02 ng/ml



#2 Decachlorobiphenyl
 R.T.: 10.650 min
 Delta R.T.: -0.002 min
 Response: 89194
 Conc: 5.40 ng/ml

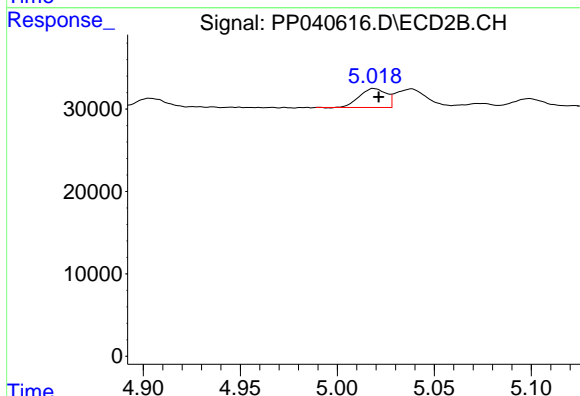


#2 Decachlorobiphenyl
 R.T.: 9.039 min
 Delta R.T.: -0.002 min
 Response: 124065
 Conc: 5.91 ng/ml



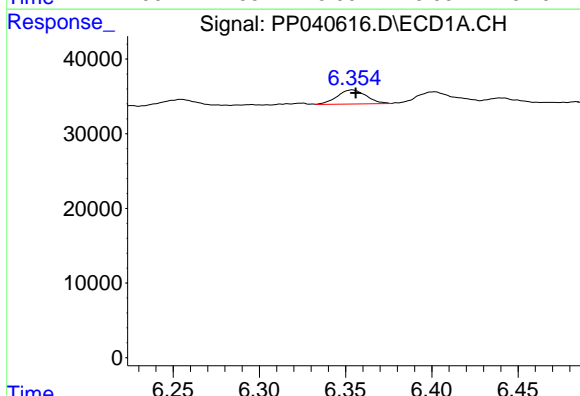
#21 AR-1248-1

R.T.: 6.059 min
Delta R.T.: -0.003 min
Response: 18823
Conc: 61.73 ng/ml



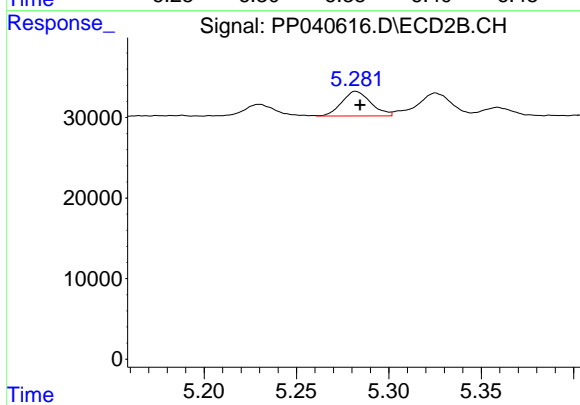
#21 AR-1248-1

R.T.: 5.019 min
Delta R.T.: -0.002 min
Response: 22271
Conc: 60.29 ng/ml



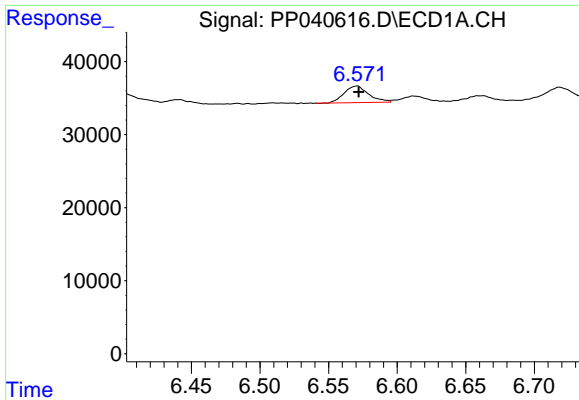
#22 AR-1248-2

R.T.: 6.354 min
Delta R.T.: -0.002 min
Response: 21985
Conc: 52.34 ng/ml

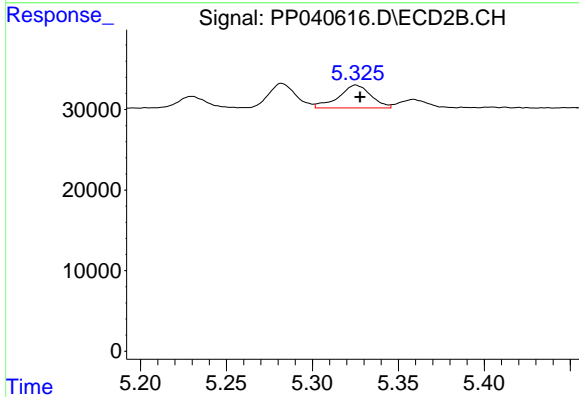


#22 AR-1248-2

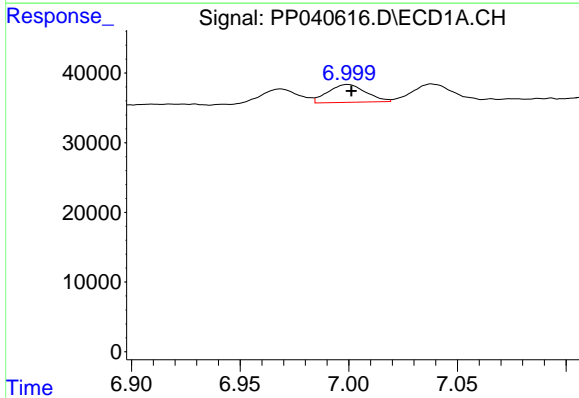
R.T.: 5.282 min
Delta R.T.: -0.002 min
Response: 33515
Conc: 63.86 ng/ml



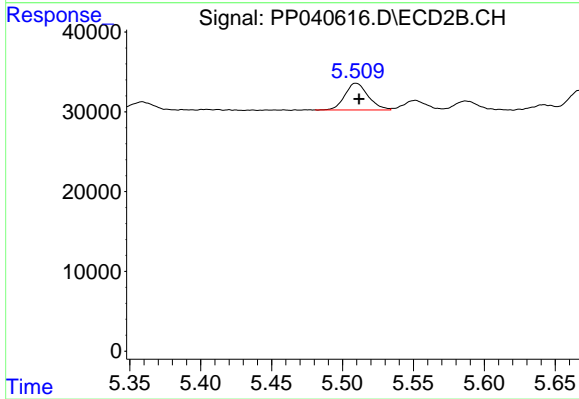
#23 AR-1248-3
 R.T.: 6.571 min
 Delta R.T.: 0.000 min
 Response: 28275
 Conc: 54.67 ng/ml



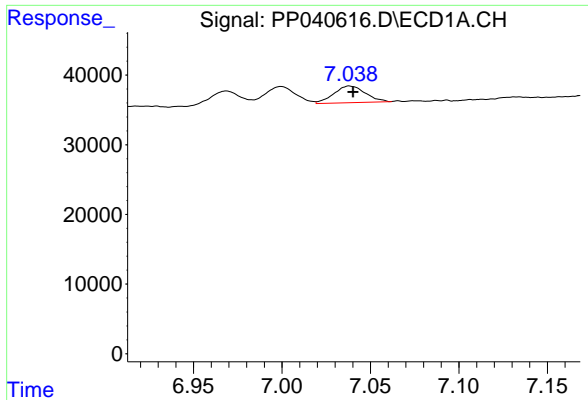
#23 AR-1248-3
 R.T.: 5.326 min
 Delta R.T.: -0.002 min
 Response: 37203
 Conc: 68.08 ng/ml



#24 AR-1248-4
 R.T.: 6.999 min
 Delta R.T.: -0.002 min
 Response: 31113
 Conc: 54.92 ng/ml

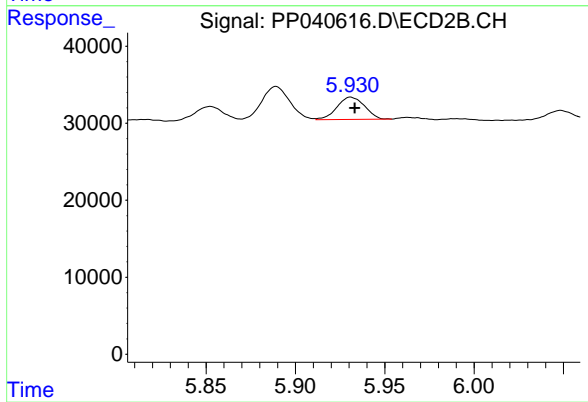


#24 AR-1248-4
 R.T.: 5.510 min
 Delta R.T.: -0.002 min
 Response: 38369
 Conc: 61.07 ng/ml



#25 AR-1248-5

R.T.: 7.038 min
Delta R.T.: -0.002 min
Response: 29470
Conc: 52.08 ng/ml



#25 AR-1248-5

R.T.: 5.931 min
Delta R.T.: -0.002 min
Response: 31021
Conc: 52.84 ng/ml