

Data Path : Z:\pestpcbsrv\HPCHEM1\ECD_P\Data\PP110121\
 Data File : PP040617.D
 Signal(s) : Signal #1: ECD1A.CH Signal #2: ECD2B.CH
 Acq On : 01 Nov 2021 22:59
 Operator : AJ\MA
 Sample : AR1254ICC1000
 Misc :
 ALS Vial : 20 Sample Multiplier: 1

Integration File signal 1: autoint1.e
 Integration File signal 2: autoint2.e
 Quant Time: Nov 02 04:21:20 2021
 Quant Method : Z:\pestpcbsrv\HPCHEM1\ECD_P\methods\PP110121.M
 Quant Title : GC EXTRACTABLES
 QLast Update : Tue Nov 02 04:18:54 2021
 Response via : Initial Calibration
 Integrator: ChemStation 6890 Scale Mode: Small noise peaks clipped

Volume Inj. : 2 µl
 Signal #1 Phase : ZB-MR2 Signal #2 Phase: ZB-MR2
 Signal #1 Info : 30Mx0.32mmx 0.50µ Signal #2 Info : 30M x 0.32mm x 0.25µm

Compound	RT#1	RT#2	Resp#1	Resp#2	ng/ml	ng/ml

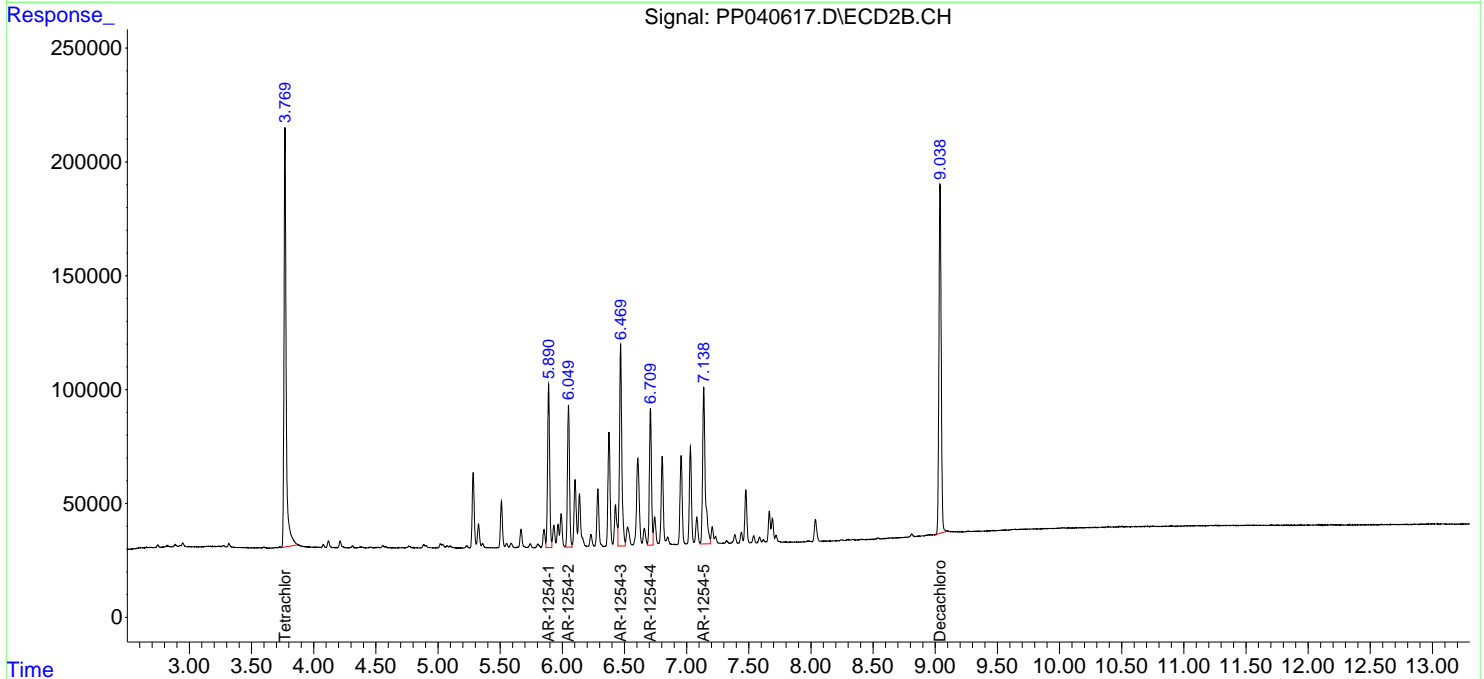
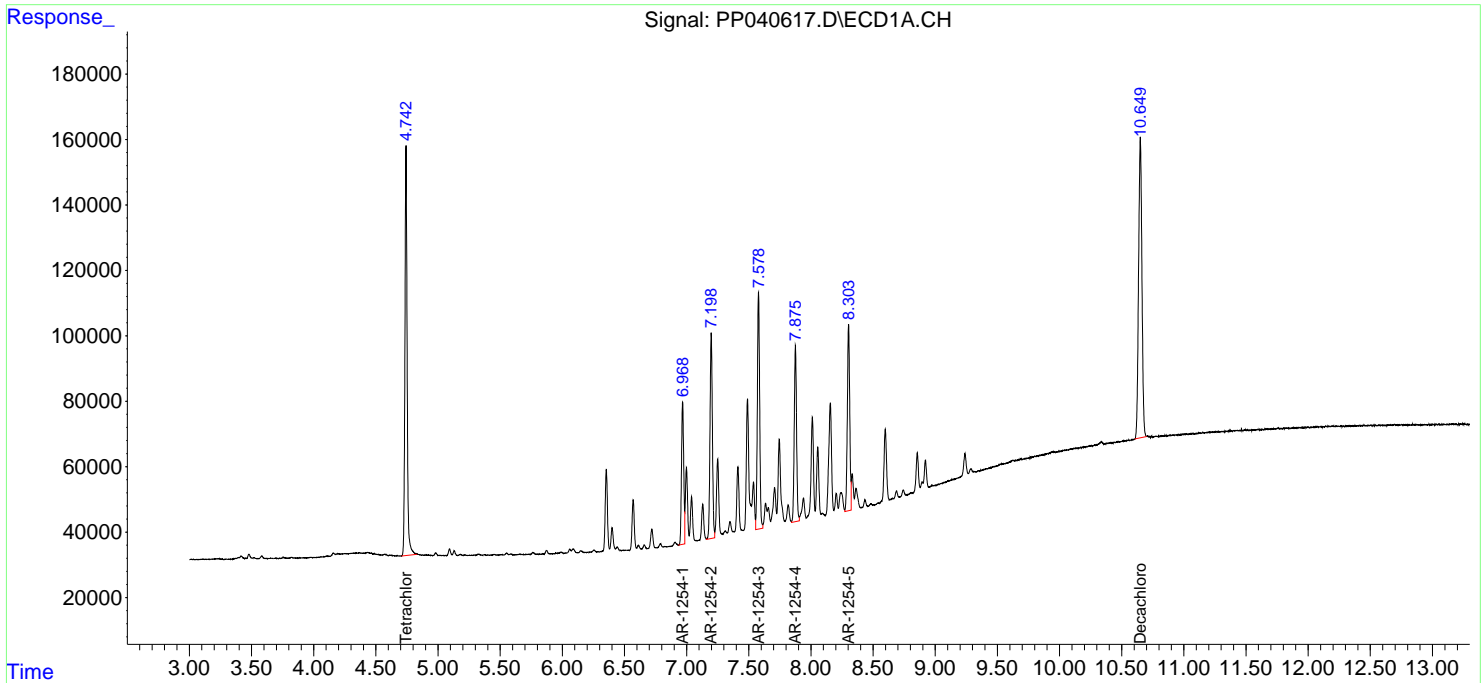
System Monitoring Compounds						
1) SA Tetrachlo...	4.743	3.769	1538532	2234840	90.932	91.344
2) SA Decachlor...	10.650	9.039	1715327	1949030	114.689	89.732
Target Compounds						
26) L6 AR-1254-1	6.968	5.890	536251	828051	863.895	873.011
27) L6 AR-1254-2	7.198	6.050	833898	715942	865.944	871.072
28) L6 AR-1254-3	7.578	6.469	929114	1136354	897.646	891.953
29) L6 AR-1254-4	7.875	6.709	693939	696747	900.524	888.028
30) L6 AR-1254-5	8.303	7.138	760620	1030778	920.076	896.410

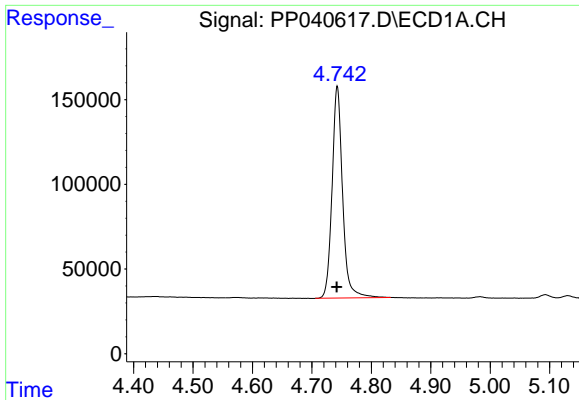
(f)=RT Delta > 1/2 Window (#)=Amounts differ by > 25% (m)=manual int.

Data Path : Z:\pestpcbsrv\HPCHEM1\ECD_P\Data\PP110121\
 Data File : PP040617.D
 Signal(s) : Signal #1: ECD1A.CH Signal #2: ECD2B.CH
 Acq On : 01 Nov 2021 22:59
 Operator : AJ\MA
 Sample : AR1254ICC1000
 Misc :
 ALS Vial : 20 Sample Multiplier: 1

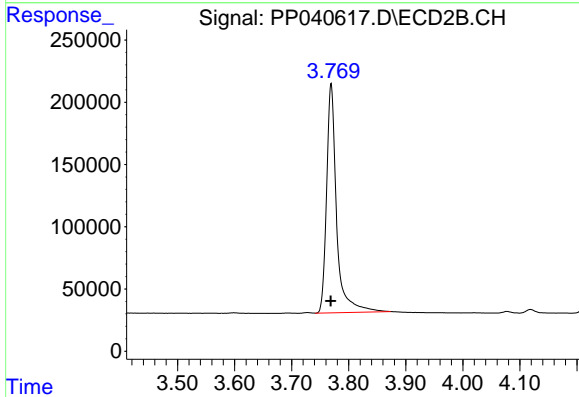
Integration File signal 1: autoint1.e
 Integration File signal 2: autoint2.e
 Quant Time: Nov 02 04:21:20 2021
 Quant Method : Z:\pestpcbsrv\HPCHEM1\ECD_P\methods\PP110121.M
 Quant Title : GC EXTRACTABLES
 QLast Update : Tue Nov 02 04:18:54 2021
 Response via : Initial Calibration
 Integrator: ChemStation 6890 Scale Mode: Small noise peaks clipped

Volume Inj. : 2 µl
 Signal #1 Phase : ZB-MR1 Signal #2 Phase: ZB-MR2
 Signal #1 Info : 30Mx0.32mmx 0.50µ Signal #2 Info : 30M x 0.32mm x 0.25µm

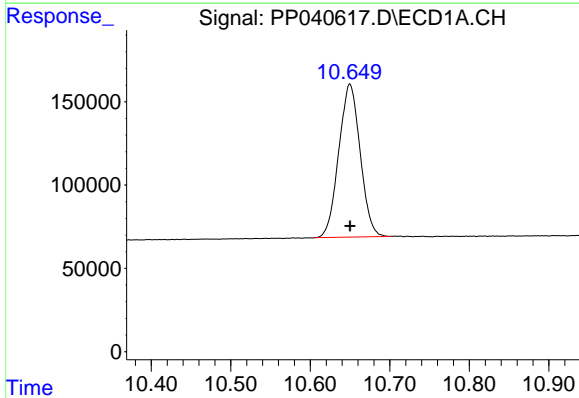




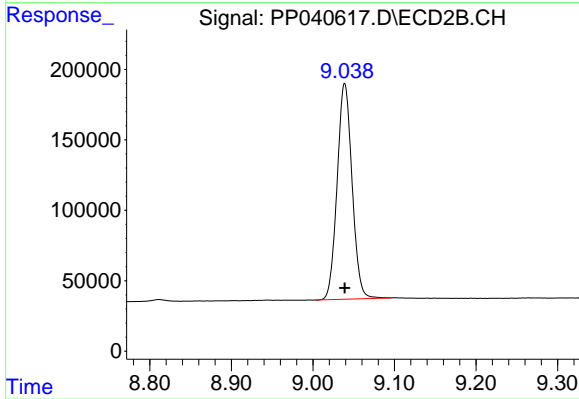
#1 Tetrachloro-m-xylene
R.T.: 4.743 min
Delta R.T.: 0.000 min
Response: 1538532
Conc: 90.93 ng/ml



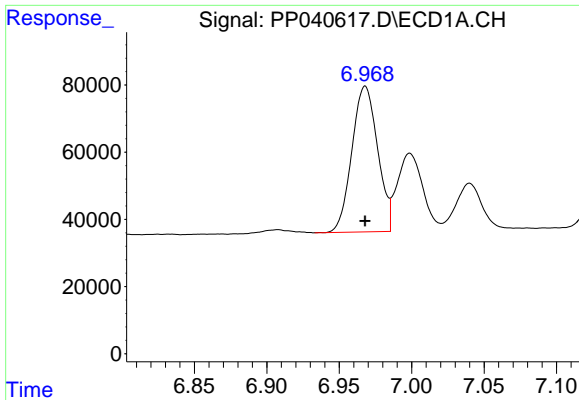
#1 Tetrachloro-m-xylene
R.T.: 3.769 min
Delta R.T.: 0.000 min
Response: 2234840
Conc: 91.34 ng/ml



#2 Decachlorobiphenyl
R.T.: 10.650 min
Delta R.T.: 0.000 min
Response: 1715327
Conc: 114.69 ng/ml

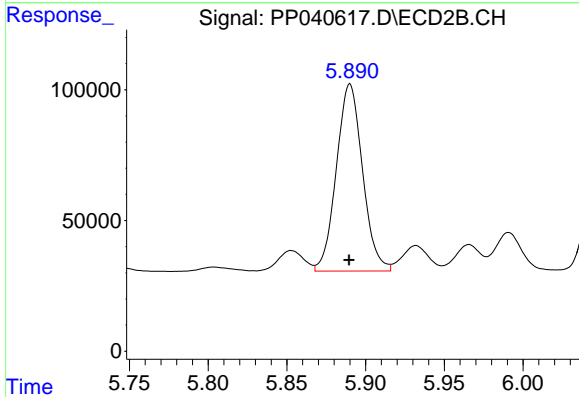


#2 Decachlorobiphenyl
R.T.: 9.039 min
Delta R.T.: 0.000 min
Response: 1949030
Conc: 89.73 ng/ml



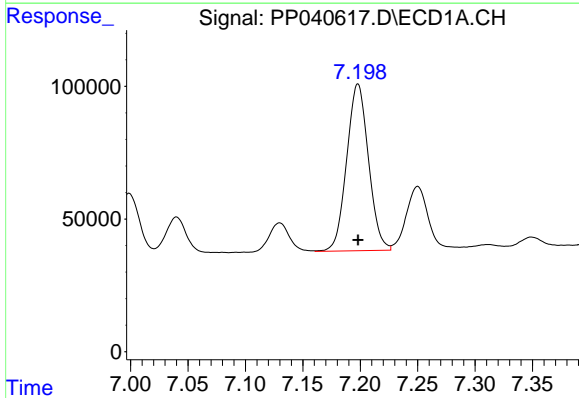
#26 AR-1254-1

R.T.: 6.968 min
Delta R.T.: 0.000 min
Response: 536251
Conc: 863.90 ng/ml



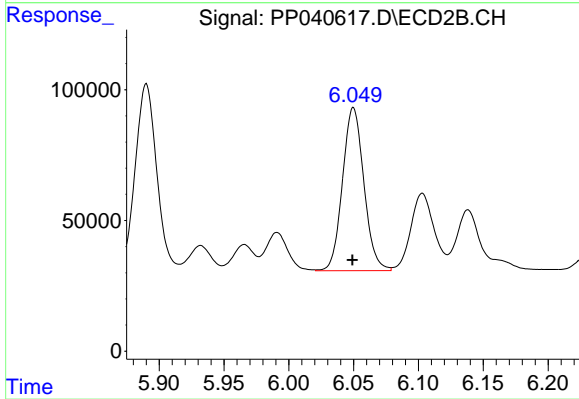
#26 AR-1254-1

R.T.: 5.890 min
Delta R.T.: 0.000 min
Response: 828051
Conc: 873.01 ng/ml



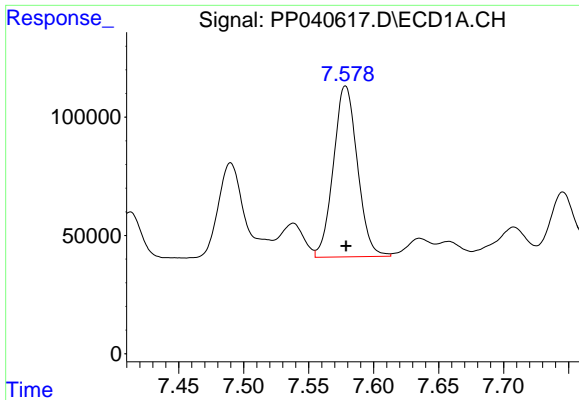
#27 AR-1254-2

R.T.: 7.198 min
Delta R.T.: 0.000 min
Response: 833898
Conc: 865.94 ng/ml



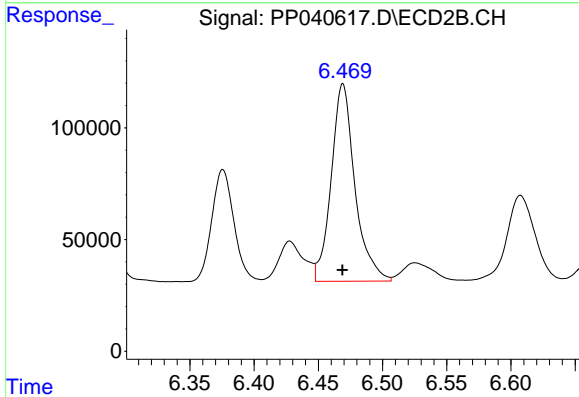
#27 AR-1254-2

R.T.: 6.050 min
Delta R.T.: 0.000 min
Response: 715942
Conc: 871.07 ng/ml



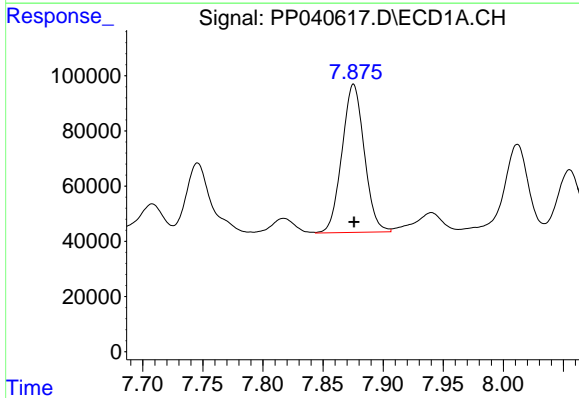
#28 AR-1254-3

R.T.: 7.578 min
Delta R.T.: 0.000 min
Response: 929114
Conc: 897.65 ng/ml



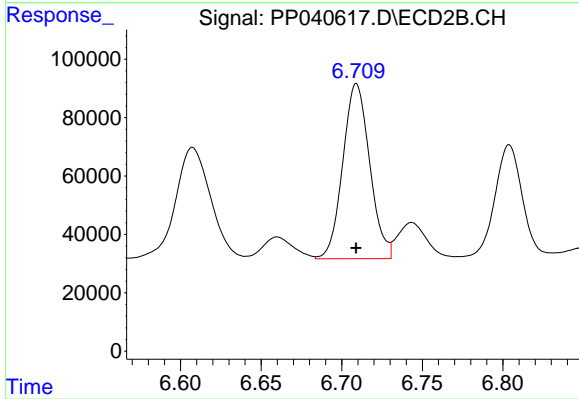
#28 AR-1254-3

R.T.: 6.469 min
Delta R.T.: 0.000 min
Response: 1136354
Conc: 891.95 ng/ml



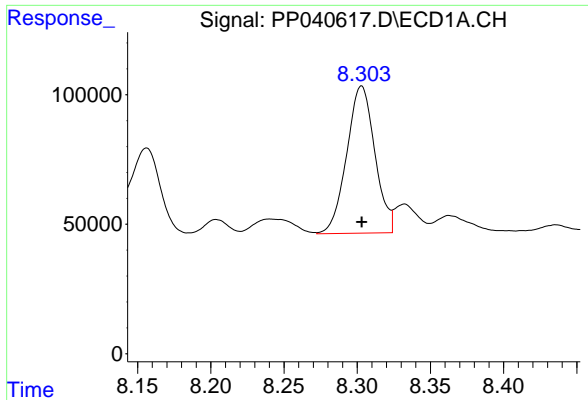
#29 AR-1254-4

R.T.: 7.875 min
Delta R.T.: 0.000 min
Response: 693939
Conc: 900.52 ng/ml



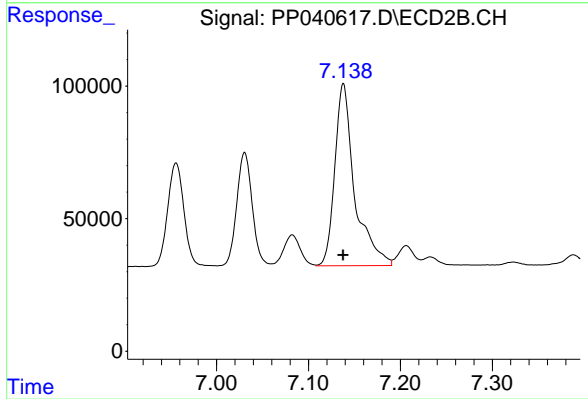
#29 AR-1254-4

R.T.: 6.709 min
Delta R.T.: 0.000 min
Response: 696747
Conc: 888.03 ng/ml



#30 AR-1254-5

R.T.: 8.303 min
Delta R.T.: 0.000 min
Response: 760620
Conc: 920.08 ng/ml



#30 AR-1254-5

R.T.: 7.138 min
Delta R.T.: 0.000 min
Response: 1030778
Conc: 896.41 ng/ml