

Data Path : Z:\pestpcbsrv\HPCHEM1\ECD_P\Data\PP110122\
 Data File : PP052915.D
 Signal(s) : Signal #1: ECD1A.ch Signal #2: ECD2B.ch
 Acq On : 01 Nov 2022 10:43
 Operator : YP\AJ
 Sample : I.BLK
 Misc :
 ALS Vial : 2 Sample Multiplier: 1

Instrument :
 ECD_P
 ClientSampleId :
 I.BLK

Integration File signal 1: autoint1.e
 Integration File signal 2: autoint2.e
 Quant Time: Nov 01 22:18:34 2022
 Quant Method : Z:\pestpcbsrv\HPCHEM1\ECD_P\methods\PP102622.M
 Quant Title : GC EXTRACTABLES
 QLast Update : Thu Oct 27 04:46:37 2022
 Response via : Initial Calibration
 Integrator: ChemStation

Volume Inj. : 2 µl
 Signal #1 Phase : ZB-MR1 Signal #2 Phase: ZB-MR2
 Signal #1 Info : 30Mx0.32mmx 0.50µ Signal #2 Info : 30M x 0.32mm x 0.25µm

Compound	RT#1	RT#2	Resp#1	Resp#2	ng/ml	ng/ml

System Monitoring Compounds						
1) SA Tetrachlo...	4.412	3.653	40238832	36589270	18.210	19.470
2) SA Decachlor...	10.226	8.742	29920526	35773577	23.572	21.330

Target Compounds

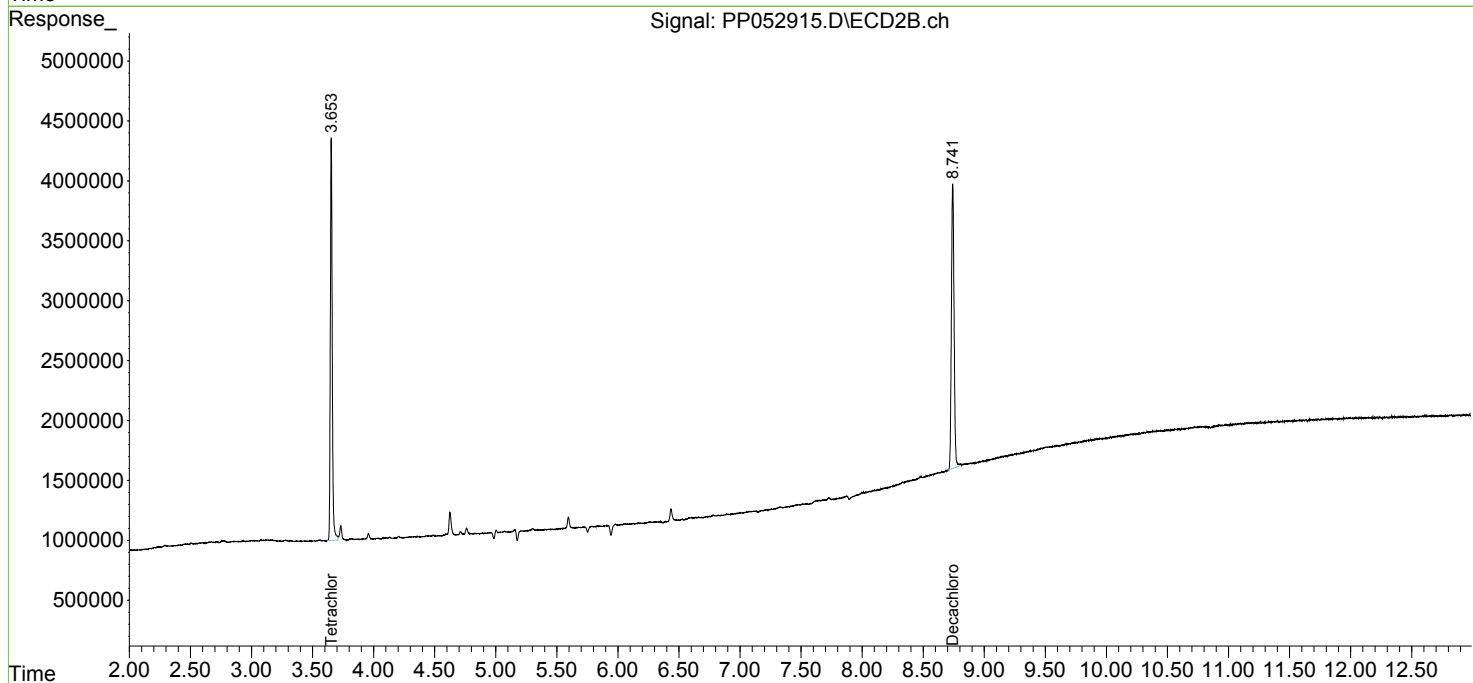
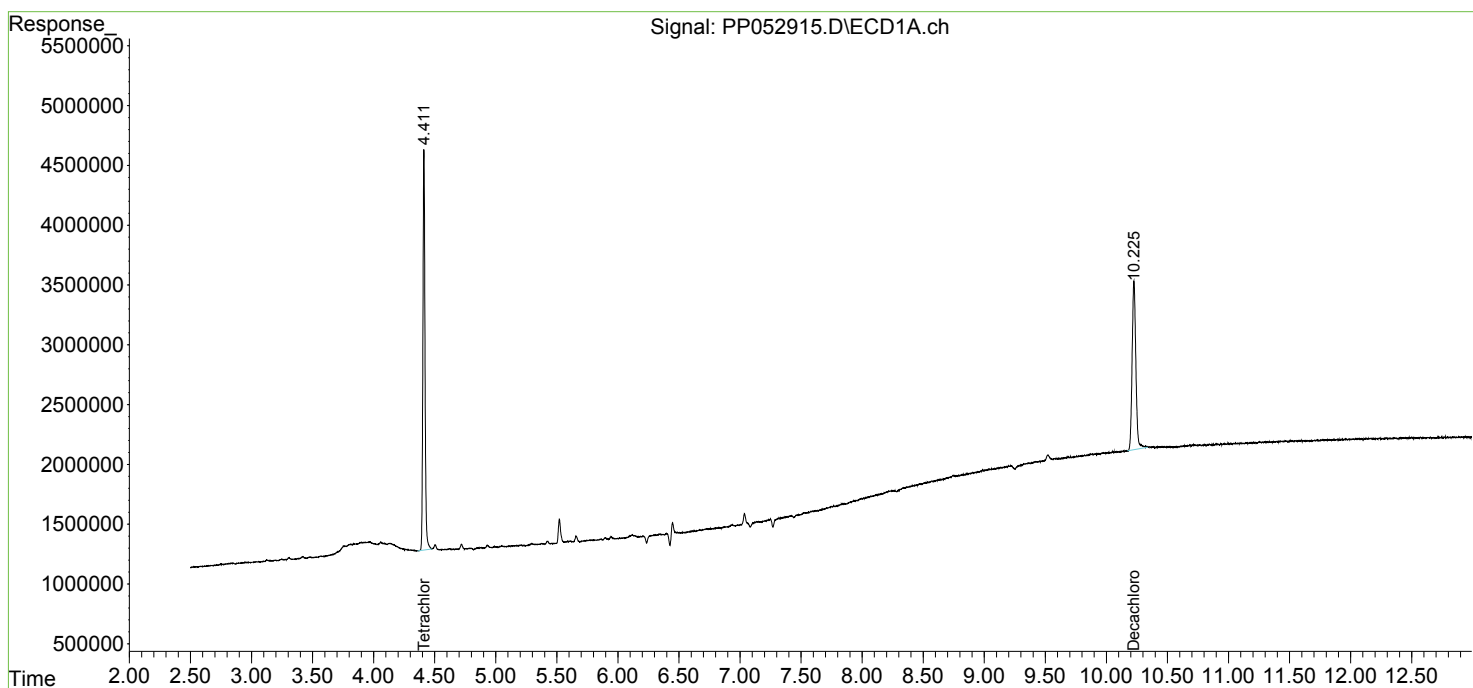
 (f)=RT Delta > 1/2 Window (#)=Amounts differ by > 25% (m)=manual int.

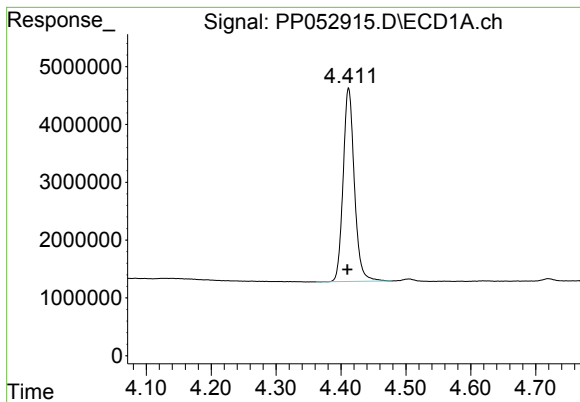
Data Path : Z:\pestpcbsrv\HPCHEM1\ECD_P\Data\PP110122\
 Data File : PP052915.D
 Signal(s) : Signal #1: ECD1A.ch Signal #2: ECD2B.ch
 Acq On : 01 Nov 2022 10:43
 Operator : YP\AJ
 Sample : I.BLK
 Misc :
 ALS Vial : 2 Sample Multiplier: 1

Instrument :
 ECD_P
 ClientSampleId :
 I.BLK

Integration File signal 1: autoint1.e
 Integration File signal 2: autoint2.e
 Quant Time: Nov 01 22:18:34 2022
 Quant Method : Z:\pestpcbsrv\HPCHEM1\ECD_P\methods\PP102622.M
 Quant Title : GC EXTRACTABLES
 QLast Update : Thu Oct 27 04:46:37 2022
 Response via : Initial Calibration
 Integrator: ChemStation

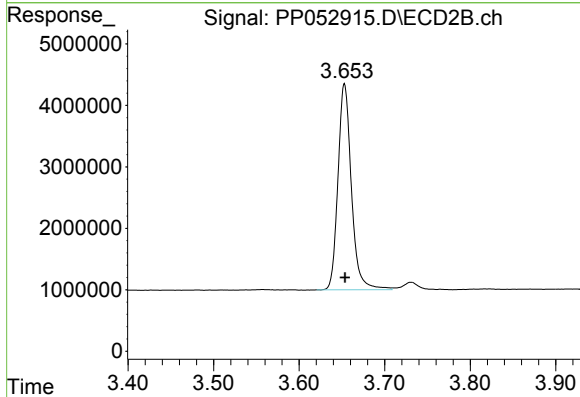
Volume Inj. : 2 µl
 Signal #1 Phase : ZB-MR1 Signal #2 Phase: ZB-MR2
 Signal #1 Info : 30Mx0.32mmx 0.50µ Signal #2 Info : 30M x 0.32mm x 0.25µm



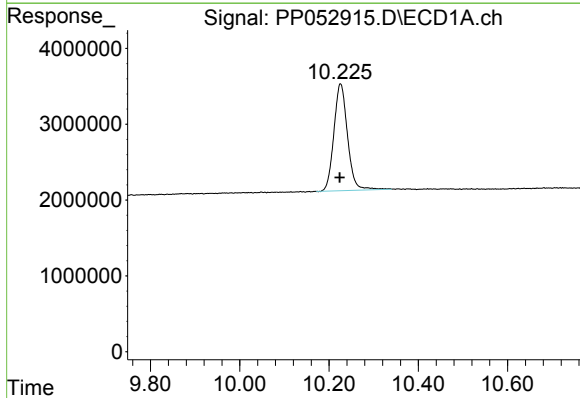


#1 Tetrachloro-m-xylene
 R.T.: 4.412 min
 Delta R.T.: 0.002 min
 Response: 40238832
 Conc: 18.21 ng/ml

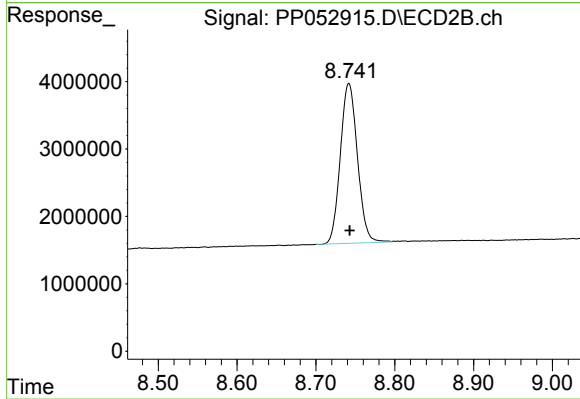
Instrument :
 ECD_P
 ClientSampleId :
 I.BLK



#1 Tetrachloro-m-xylene
 R.T.: 3.653 min
 Delta R.T.: 0.000 min
 Response: 36589270
 Conc: 19.47 ng/ml



#2 Decachlorobiphenyl
 R.T.: 10.226 min
 Delta R.T.: 0.002 min
 Response: 29920526
 Conc: 23.57 ng/ml



#2 Decachlorobiphenyl
 R.T.: 8.742 min
 Delta R.T.: -0.001 min
 Response: 35773577
 Conc: 21.33 ng/ml