

Data Path : Z:\pestpcbsrv\HPCHEM1\ECD_P\Data\PP110222\
 Data File : PP052980.D
 Signal(s) : Signal #1: ECD1A.ch Signal #2: ECD2B.ch
 Acq On : 02 Nov 2022 12:29
 Operator : YP\AJ
 Sample : AR1242CCC500
 Misc :
 ALS Vial : 4 Sample Multiplier: 1

Instrument :
 ECD_P
 ClientSampleId :

Integration File signal 1: autoint1.e
 Integration File signal 2: autoint2.e
 Quant Time: Nov 02 15:33:23 2022
 Quant Method : Z:\pestpcbsrv\HPCHEM1\ECD_P\methods\PP102622.M
 Quant Title : GC EXTRACTABLES
 QLast Update : Thu Oct 27 04:46:37 2022
 Response via : Initial Calibration
 Integrator: ChemStation

Volume Inj. : 2 µl
 Signal #1 Phase : ZB-MR1 Signal #2 Phase: ZB-MR2
 Signal #1 Info : 30Mx0.32mmx 0.50µ Signal #2 Info : 30M x 0.32mm x 0.25µm

Compound	RT#1	RT#2	Resp#1	Resp#2	ng/ml	ng/ml

System Monitoring Compounds						
1) SA Tetrachlo...	4.405	3.650	99142007	90093768	44.867	47.942
2) SA Decachlor...	10.210	8.732	65731023	81317896	51.785	48.487
Target Compounds						
3) L1 AR-1016-1	5.580	4.750	22980797	24051406	342.772	365.389
4) L1 AR-1016-2	5.602	4.770	33187707	32964035	332.262	359.071
5) L1 AR-1016-3	5.664	4.948	20827404	17983379	342.214	369.875
6) L1 AR-1016-4	5.764	4.990	16837600	15329662	347.693	393.476
7) L1 AR-1016-5	6.060	5.207	17476883	19982928	362.856	397.702
8) L2 AR-1221-1	4.611	3.865	2689141	2679610	104.874	114.151
9) L2 AR-1221-2	4.702	3.954	4041214	4002790	212.440	228.658
10) L2 AR-1221-3	4.778	4.030	14193138	14204233	248.998	261.683
11) L3 AR-1232-1	4.778	4.030	14193138	14204233	327.098	340.670
12) L3 AR-1232-2	5.310	4.770	18068470	32964035	728.245	795.147
13) L3 AR-1232-3	5.602	4.948	33187707	17983379	758.132	813.717
14) L3 AR-1232-4	5.764	5.033	16837600	18732867	788.800	911.470
15) L3 AR-1232-5	5.855	5.207	15561014	19982928	904.045	860.719
16) L4 AR-1242-1	5.580	4.750	22980797	24051406	408.324	430.971
17) L4 AR-1242-2	5.602	4.770	33187707	32964035	401.751	427.397
18) L4 AR-1242-3	5.664	4.948	20827404	17983379	409.525	438.319
19) L4 AR-1242-4	5.764	5.033	16837600	18732867	415.645	441.678
20) L4 AR-1242-5	6.504	5.564	16556325	22893878	415.279	452.907
21) L5 AR-1248-1	5.580	4.750	22980797	24051406	565.796	600.921
22) L5 AR-1248-2	5.855	4.990	15561014	15329662	261.445	270.741
23) L5 AR-1248-3	6.060	5.033	17476883	18732867	269.212	319.063
24) L5 AR-1248-4	6.466	5.207	15998894	19982928	248.413	286.975
25) L5 AR-1248-5	6.504	5.606	16556325	17729437	261.355	279.465
26) L6 AR-1254-1	6.438	5.564	12952410	22893878	170.637	213.197
27) L6 AR-1254-2	6.663	5.714	15494119	6905212	138.630	72.242 #
28) L6 AR-1254-3	7.027	6.123	7534375	9262721	67.688	60.626
29) L6 AR-1254-4	7.313	6.354	4755681	6510900	67.533	71.710
30) L6 AR-1254-5	7.735	6.776	2392434	3700770	30.387	26.600
31) L7 AR-1260-1	7.193	6.270	1363039	5035332	15.956	49.506 #
32) L7 AR-1260-2	7.449	6.444	1923619	1964690	20.600	16.155
33) L7 AR-1260-3	7.795f	6.599	493634	1816120	7.812	15.569 #
34) L7 AR-1260-4	8.025f	7.077	842534	187480	11.767	2.082 #
35) L7 AR-1260-5	8.362	7.322	269850	319232	2.123	1.558 #
36) L8 AR-1262-1	7.840f	6.868	92705	83257	0.967	1.454 #
37) L8 AR-1262-2	8.362	7.077	269850	187480	1.814	1.514
38) L8 AR-1262-3	8.693	0.000	268009	0	2.701	N.D. #
39) L8 AR-1262-4	8.798f	7.668	107500	760864	2.307	4.252 #
40) L8 AR-1262-5	9.449	0.000	58486	0	1.278	N.D. #
41) L9 AR-1268-1	8.693	0.000	268009	0	1.425	N.D. #

Data Path : Z:\pestpcbsrv\HPCHEM1\ECD_P\Data\PP110222\
 Data File : PP052980.D
 Signal(s) : Signal #1: ECD1A.ch Signal #2: ECD2B.ch
 Acq On : 02 Nov 2022 12:29
 Operator : YP\AJ
 Sample : AR1242CCC500
 Misc :
 ALS Vial : 4 Sample Multiplier: 1

Instrument :
 ECD_P
 ClientSampleId :

Integration File signal 1: autoint1.e
 Integration File signal 2: autoint2.e
 Quant Time: Nov 02 15:33:23 2022
 Quant Method : Z:\pestpcbsrv\HPCHEM1\ECD_P\methods\PP102622.M
 Quant Title : GC EXTRACTABLES
 QLast Update : Thu Oct 27 04:46:37 2022
 Response via : Initial Calibration
 Integrator: ChemStation

Volume Inj. : 2 µl
 Signal #1 Phase : ZB-MR1 Signal #2 Phase: ZB-MR2
 Signal #1 Info : 30Mx0.32mmx 0.50µ Signal #2 Info : 30M x 0.32mm x 0.25µm

	Compound	RT#1	RT#2	Resp#1	Resp#2	ng/ml	ng/ml
42)	L9 AR-1268-2	8.798f	7.668	107500	760864	0.657	2.805 #
43)	L9 AR-1268-3	9.020	7.888	68046	150792	0.449	0.643 #
44)	L9 AR-1268-4	9.449	0.000	58486	0	1.150	N.D. #
45)	L9 AR-1268-5	9.890	8.469	18358	323168	0.043	0.493 #

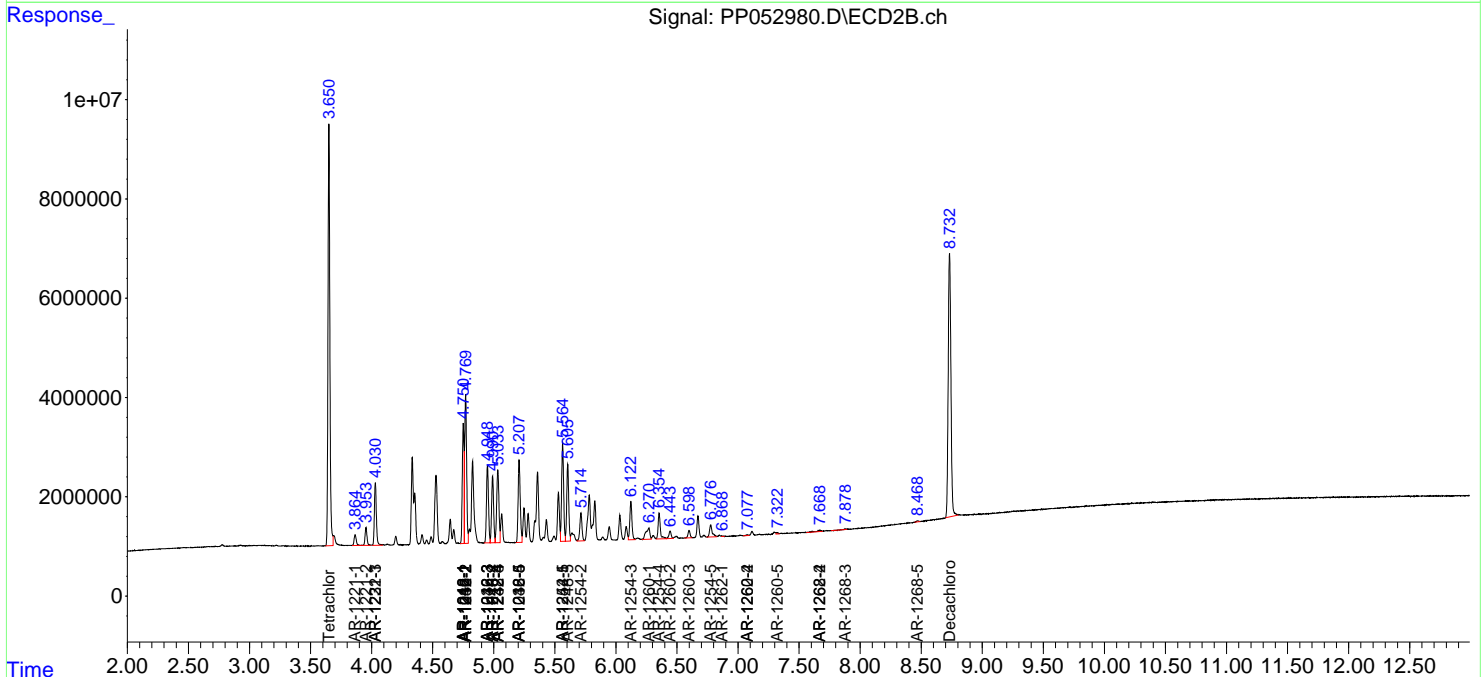
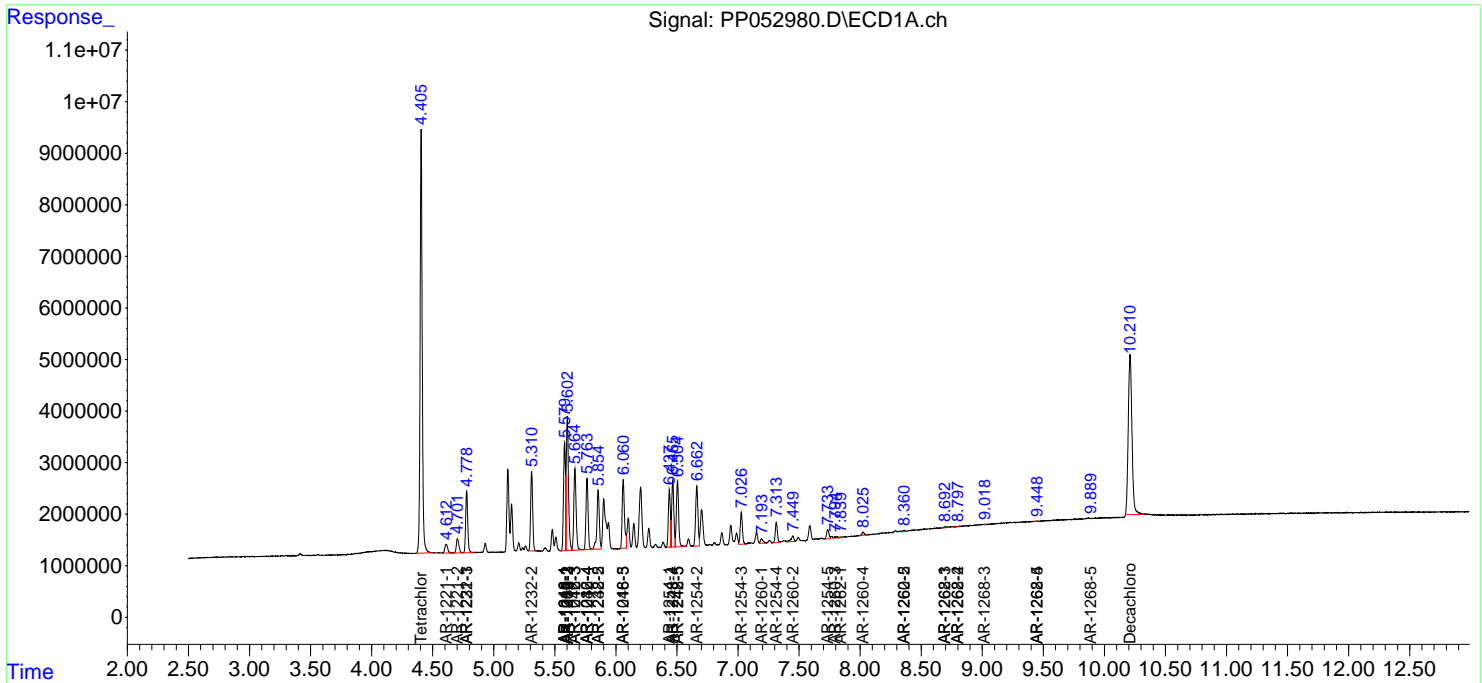
(f)=RT Delta > 1/2 Window (#)=Amounts differ by > 25% (m)=manual int.

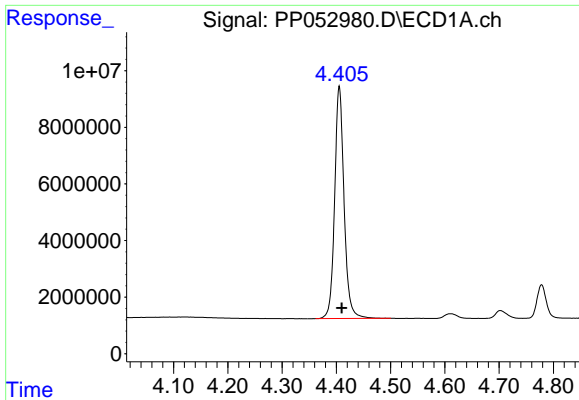
Data Path : Z:\pestpcbsrv\HPCHEM1\ECD_P\Data\PP110222\
 Data File : PP052980.D
 Signal(s) : Signal #1: ECD1A.ch Signal #2: ECD2B.ch
 Acq On : 02 Nov 2022 12:29
 Operator : YP\AJ
 Sample : AR1242CCC500
 Misc :
 ALS Vial : 4 Sample Multiplier: 1

Instrument :
 ECD_P
 ClientSampleId :

Integration File signal 1: autoint1.e
 Integration File signal 2: autoint2.e
 Quant Time: Nov 02 15:33:23 2022
 Quant Method : Z:\pestpcbsrv\HPCHEM1\ECD_P\methods\PP102622.M
 Quant Title : GC EXTRACTABLES
 QLast Update : Thu Oct 27 04:46:37 2022
 Response via : Initial Calibration
 Integrator: ChemStation

Volume Inj. : 2 µl
 Signal #1 Phase : ZB-MR1 Signal #2 Phase: ZB-MR2
 Signal #1 Info : 30Mx0.32mmx 0.50µ Signal #2 Info : 30M x 0.32mm x 0.25µm

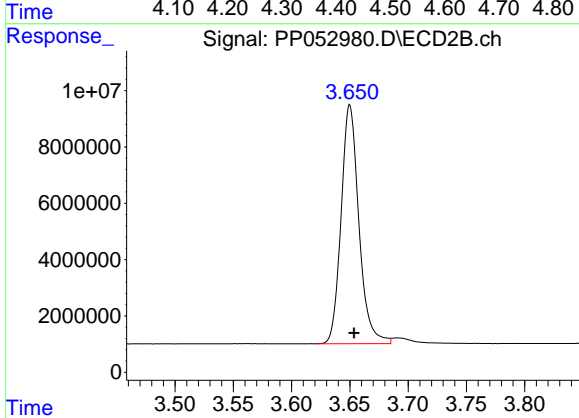




#1 Tetrachloro-m-xylene

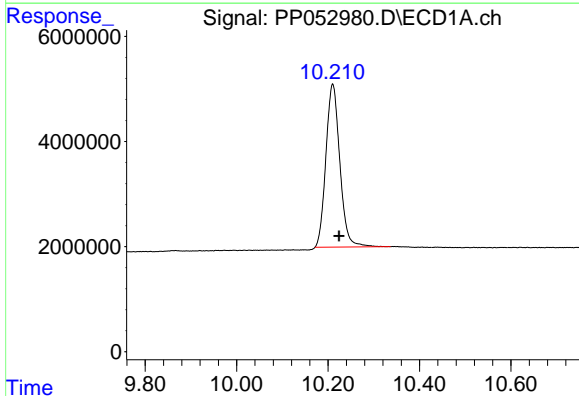
R.T.: 4.405 min
 Delta R.T.: -0.005 min
 Response: 99142007
 Conc: 44.87 ng/ml

Instrument :
 ECD_P
 ClientSampleId :



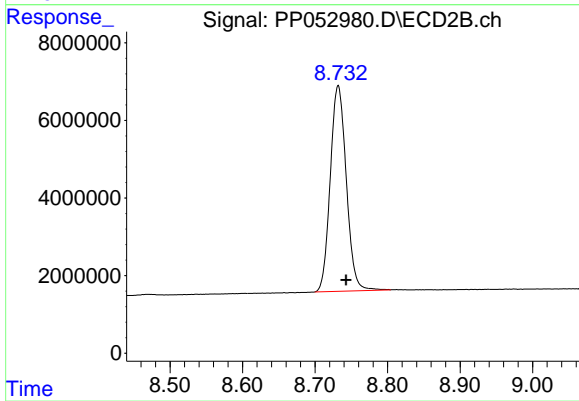
#1 Tetrachloro-m-xylene

R.T.: 3.650 min
 Delta R.T.: -0.004 min
 Response: 90093768
 Conc: 47.94 ng/ml



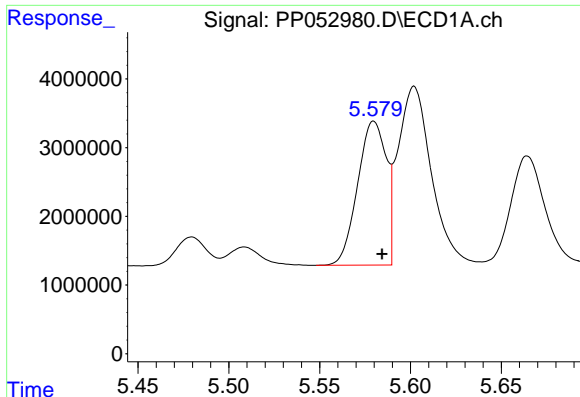
#2 Decachlorobiphenyl

R.T.: 10.210 min
 Delta R.T.: -0.014 min
 Response: 65731023
 Conc: 51.78 ng/ml



#2 Decachlorobiphenyl

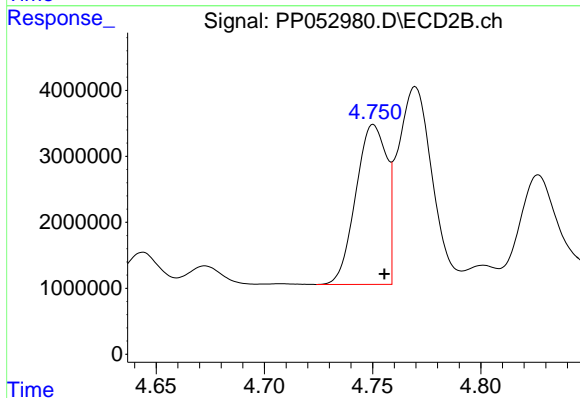
R.T.: 8.732 min
 Delta R.T.: -0.011 min
 Response: 81317896
 Conc: 48.49 ng/ml



#3 AR-1016-1

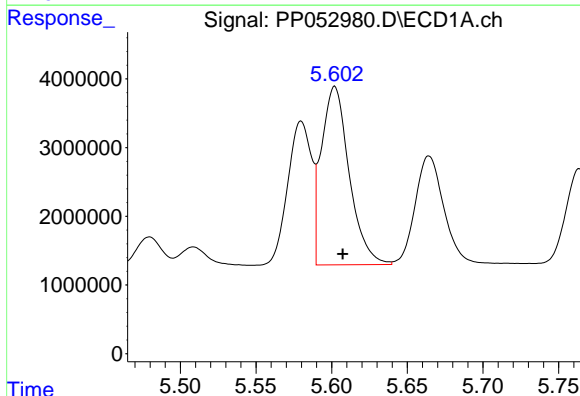
R.T.: 5.580 min
 Delta R.T.: -0.005 min
 Response: 22980797
 Conc: 342.77 ng/ml

Instrument :
 ECD_P
 ClientSampleId :



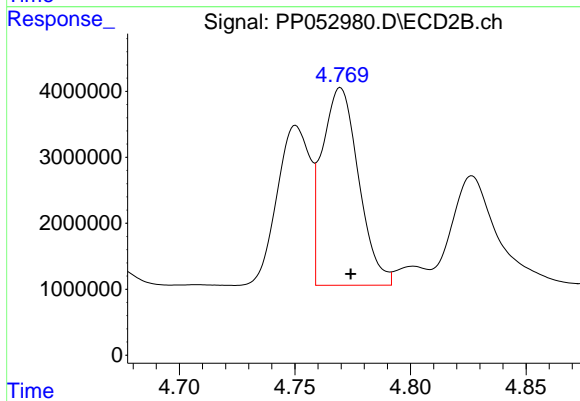
#3 AR-1016-1

R.T.: 4.750 min
 Delta R.T.: -0.005 min
 Response: 24051406
 Conc: 365.39 ng/ml



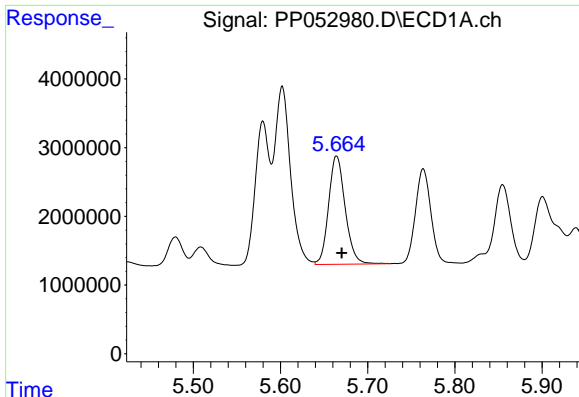
#4 AR-1016-2

R.T.: 5.602 min
 Delta R.T.: -0.005 min
 Response: 33187707
 Conc: 332.26 ng/ml



#4 AR-1016-2

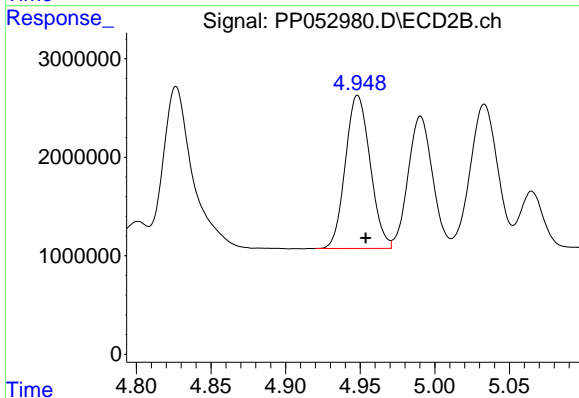
R.T.: 4.770 min
 Delta R.T.: -0.004 min
 Response: 32964035
 Conc: 359.07 ng/ml



#5 AR-1016-3

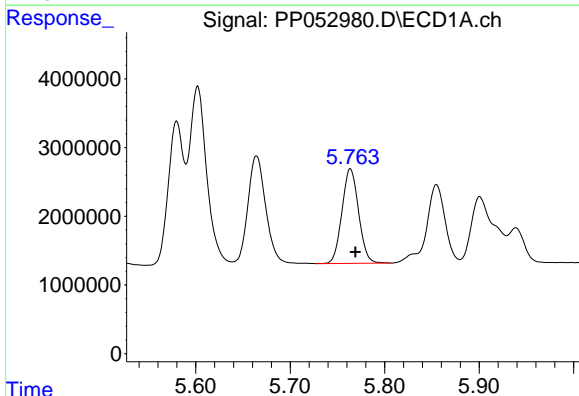
R.T.: 5.664 min
 Delta R.T.: -0.006 min
 Response: 20827404
 Conc: 342.21 ng/ml

Instrument :
 ECD_P
 ClientSampleId :



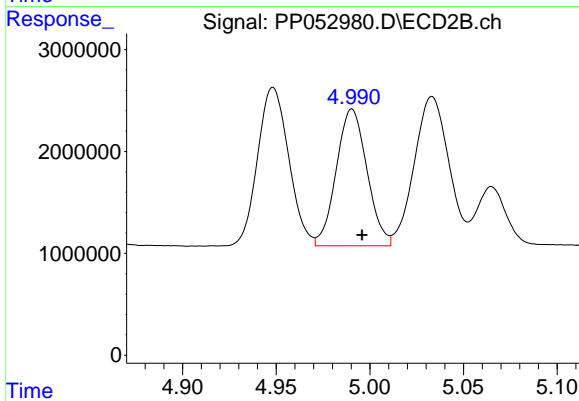
#5 AR-1016-3

R.T.: 4.948 min
 Delta R.T.: -0.005 min
 Response: 17983379
 Conc: 369.88 ng/ml



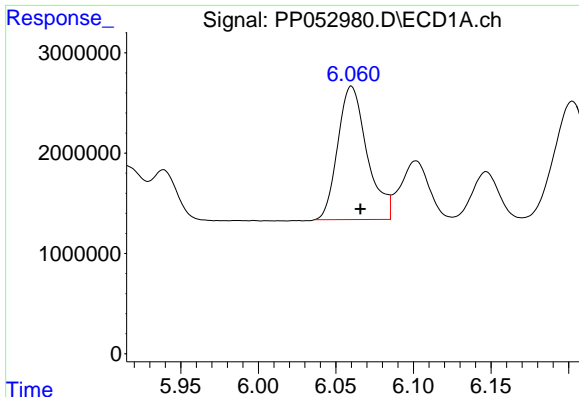
#6 AR-1016-4

R.T.: 5.764 min
 Delta R.T.: -0.005 min
 Response: 16837600
 Conc: 347.69 ng/ml



#6 AR-1016-4

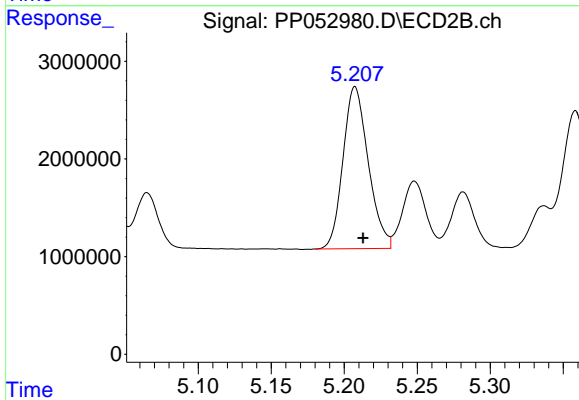
R.T.: 4.990 min
 Delta R.T.: -0.005 min
 Response: 15329662
 Conc: 393.48 ng/ml



#7 AR-1016-5

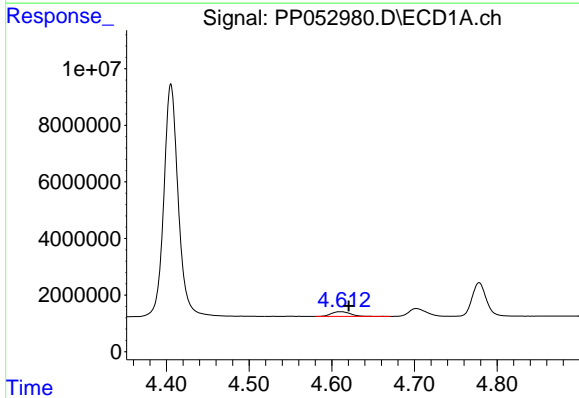
R.T.: 6.060 min
 Delta R.T.: -0.006 min
 Response: 17476883
 Conc: 362.86 ng/ml

Instrument :
 ECD_P
 ClientSampleId :



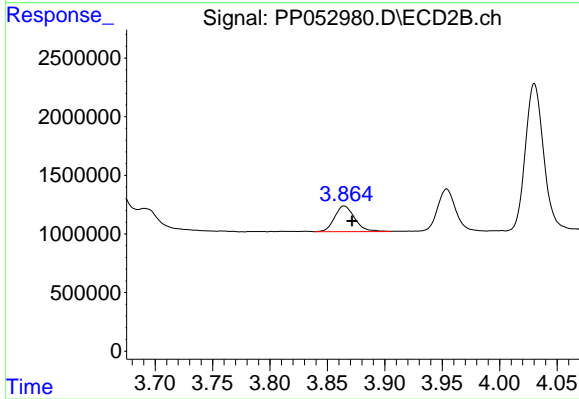
#7 AR-1016-5

R.T.: 5.207 min
 Delta R.T.: -0.005 min
 Response: 19982928
 Conc: 397.70 ng/ml



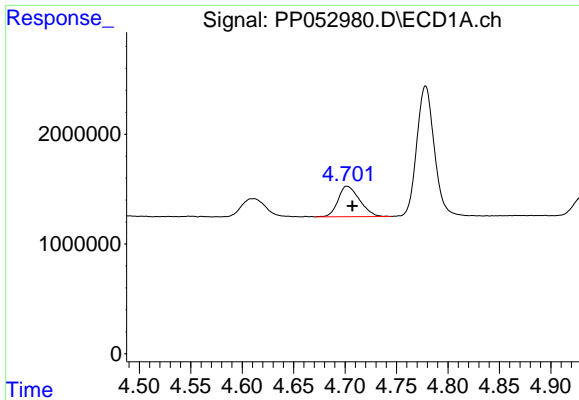
#8 AR-1221-1

R.T.: 4.611 min
 Delta R.T.: -0.010 min
 Response: 2689141
 Conc: 104.87 ng/ml



#8 AR-1221-1

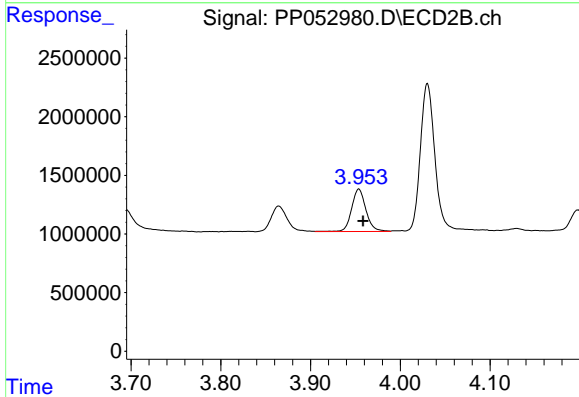
R.T.: 3.865 min
 Delta R.T.: -0.007 min
 Response: 2679610
 Conc: 114.15 ng/ml



#9 AR-1221-2

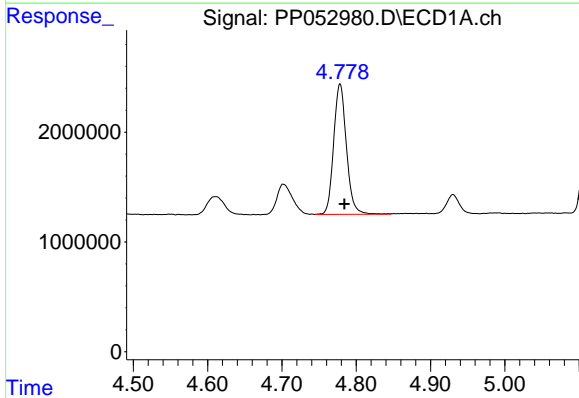
R.T.: 4.702 min
 Delta R.T.: -0.005 min
 Response: 4041214
 Conc: 212.44 ng/ml

Instrument :
 ECD_P
 ClientSampleId :



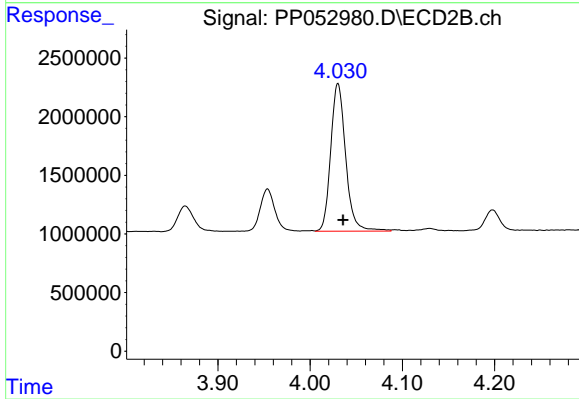
#9 AR-1221-2

R.T.: 3.954 min
 Delta R.T.: -0.005 min
 Response: 4002790
 Conc: 228.66 ng/ml



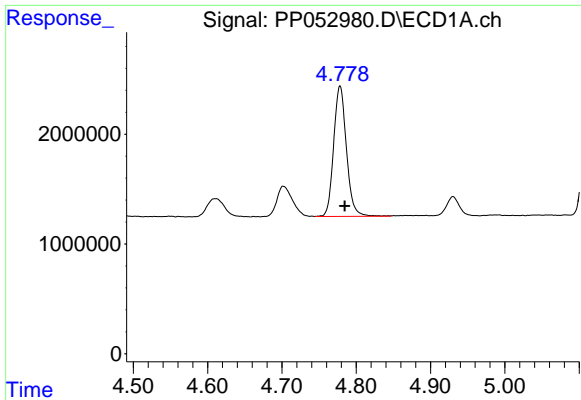
#10 AR-1221-3

R.T.: 4.778 min
 Delta R.T.: -0.006 min
 Response: 14193138
 Conc: 249.00 ng/ml



#10 AR-1221-3

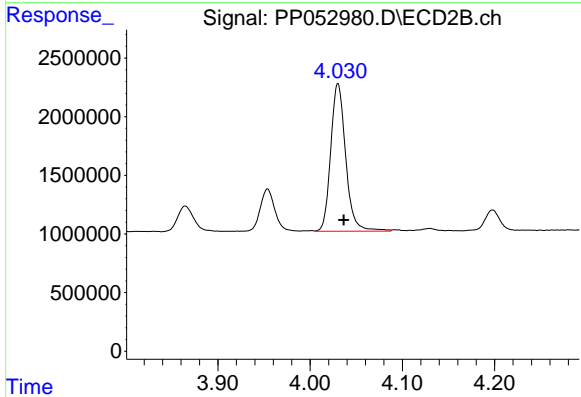
R.T.: 4.030 min
 Delta R.T.: -0.005 min
 Response: 14204233
 Conc: 261.68 ng/ml



#11 AR-1232-1

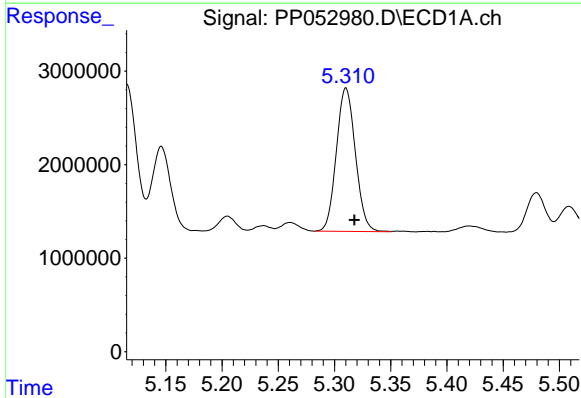
R.T.: 4.778 min
Delta R.T.: -0.006 min
Response: 14193138
Conc: 327.10 ng/ml

Instrument :
ECD_P
ClientSampleId :



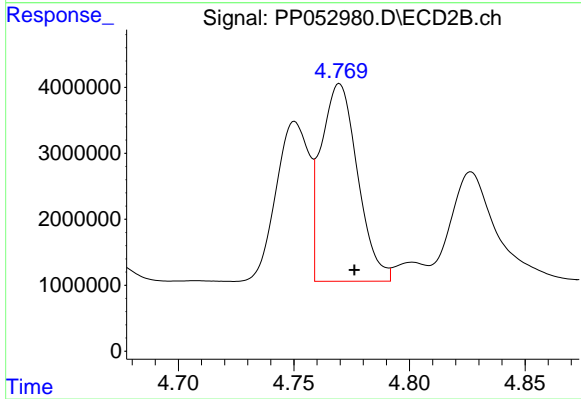
#11 AR-1232-1

R.T.: 4.030 min
Delta R.T.: -0.006 min
Response: 14204233
Conc: 340.67 ng/ml



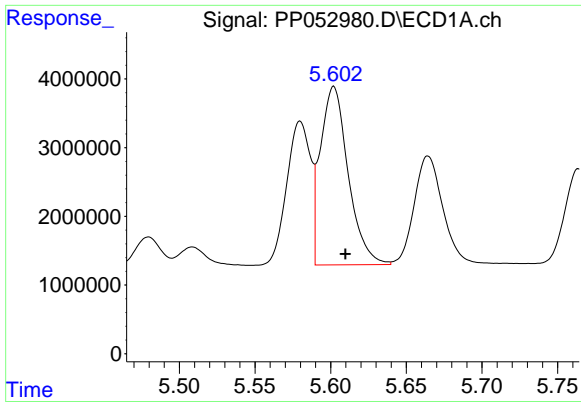
#12 AR-1232-2

R.T.: 5.310 min
Delta R.T.: -0.008 min
Response: 18068470
Conc: 728.24 ng/ml



#12 AR-1232-2

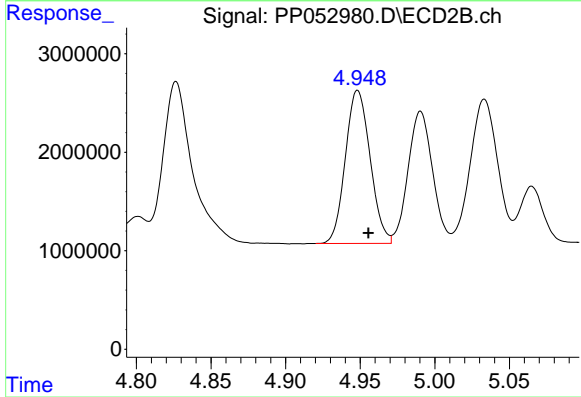
R.T.: 4.770 min
Delta R.T.: -0.006 min
Response: 32964035
Conc: 795.15 ng/ml



#13 AR-1232-3

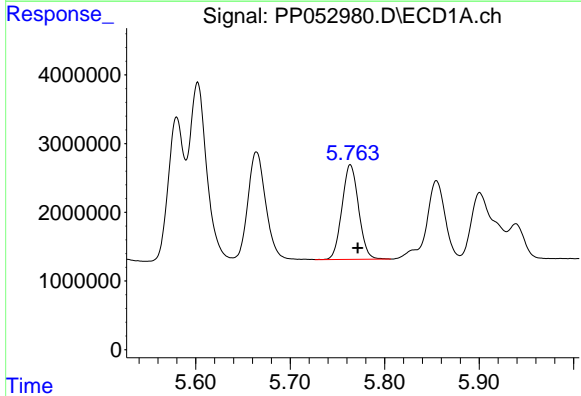
R.T.: 5.602 min
 Delta R.T.: -0.008 min
 Response: 33187707
 Conc: 758.13 ng/ml

Instrument :
 ECD_P
 ClientSampleId :



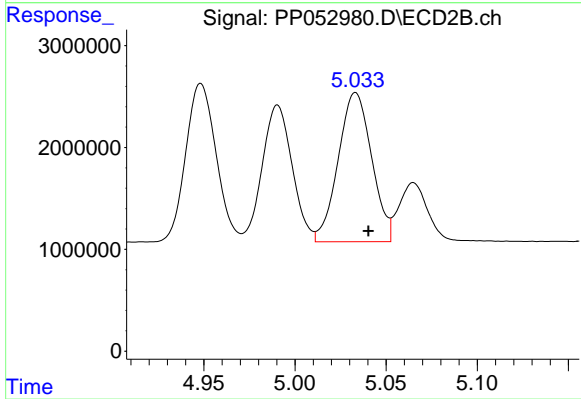
#13 AR-1232-3

R.T.: 4.948 min
 Delta R.T.: -0.007 min
 Response: 17983379
 Conc: 813.72 ng/ml



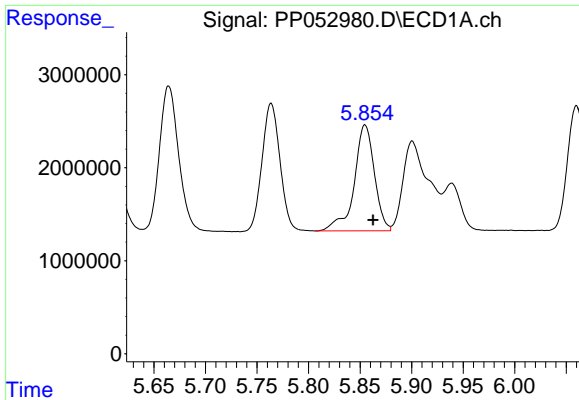
#14 AR-1232-4

R.T.: 5.764 min
 Delta R.T.: -0.008 min
 Response: 16837600
 Conc: 788.80 ng/ml



#14 AR-1232-4

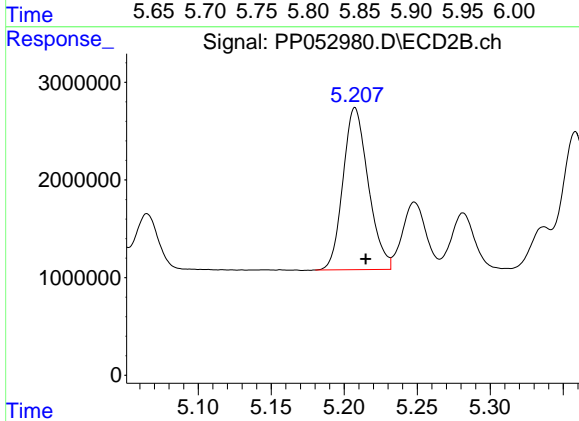
R.T.: 5.033 min
 Delta R.T.: -0.007 min
 Response: 18732867
 Conc: 911.47 ng/ml



#15 AR-1232-5

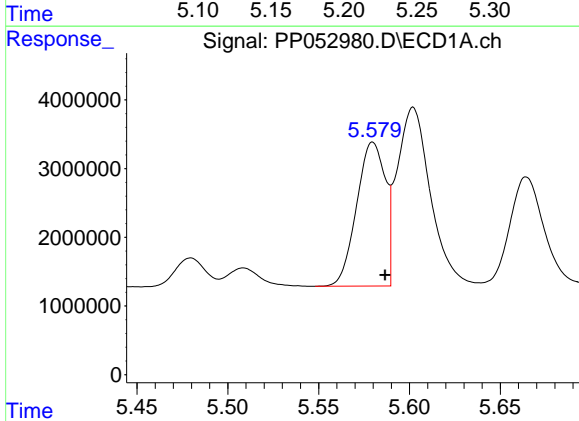
R.T.: 5.855 min
 Delta R.T.: -0.008 min
 Response: 15561014
 Conc: 904.05 ng/ml

Instrument :
 ECD_P
 ClientSampleId :



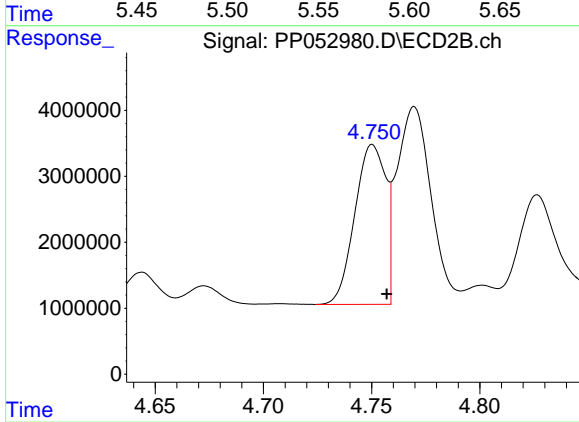
#15 AR-1232-5

R.T.: 5.207 min
 Delta R.T.: -0.007 min
 Response: 19982928
 Conc: 860.72 ng/ml



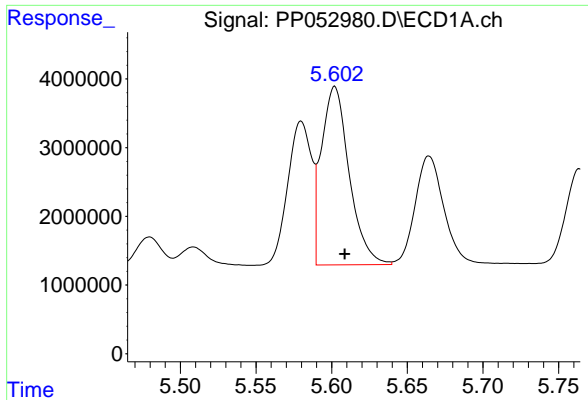
#16 AR-1242-1

R.T.: 5.580 min
 Delta R.T.: -0.007 min
 Response: 22980797
 Conc: 408.32 ng/ml



#16 AR-1242-1

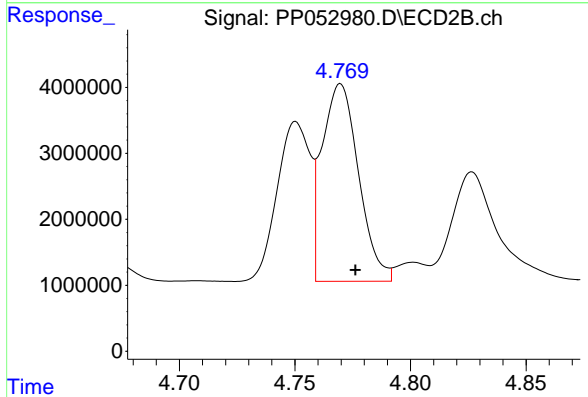
R.T.: 4.750 min
 Delta R.T.: -0.007 min
 Response: 24051406
 Conc: 430.97 ng/ml



#17 AR-1242-2

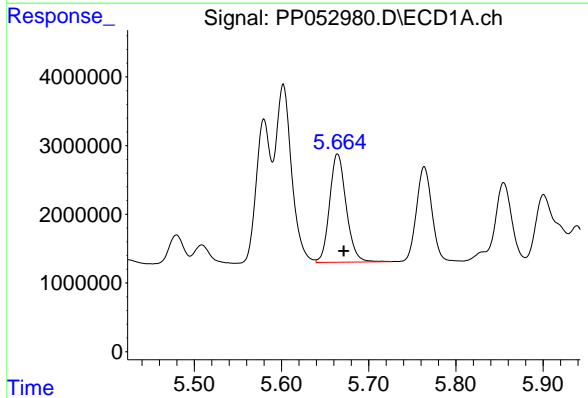
R.T.: 5.602 min
 Delta R.T.: -0.007 min
 Response: 33187707
 Conc: 401.75 ng/ml

Instrument :
 ECD_P
 ClientSampleId :



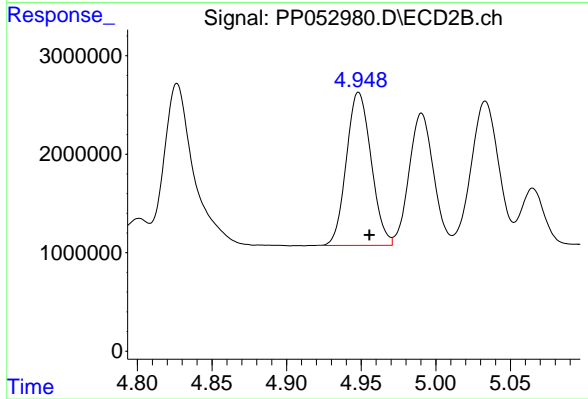
#17 AR-1242-2

R.T.: 4.770 min
 Delta R.T.: -0.006 min
 Response: 32964035
 Conc: 427.40 ng/ml



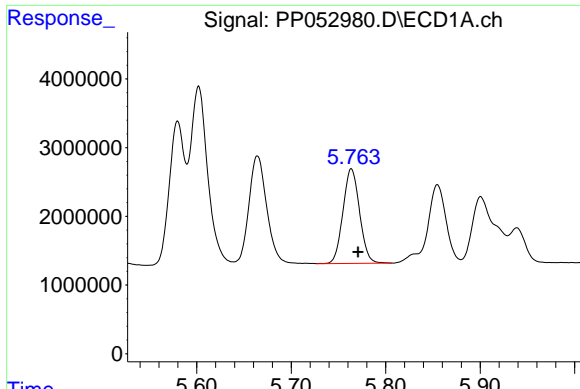
#18 AR-1242-3

R.T.: 5.664 min
 Delta R.T.: -0.007 min
 Response: 20827404
 Conc: 409.52 ng/ml



#18 AR-1242-3

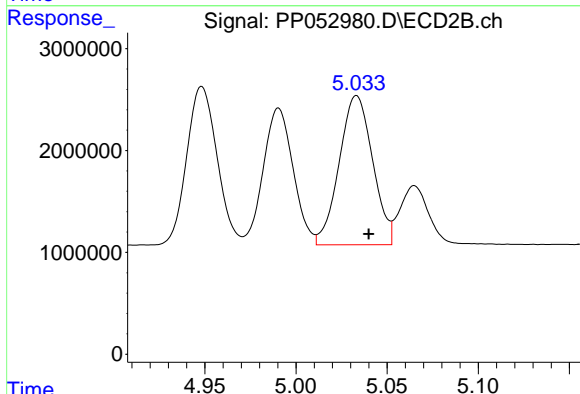
R.T.: 4.948 min
 Delta R.T.: -0.007 min
 Response: 17983379
 Conc: 438.32 ng/ml



#19 AR-1242-4

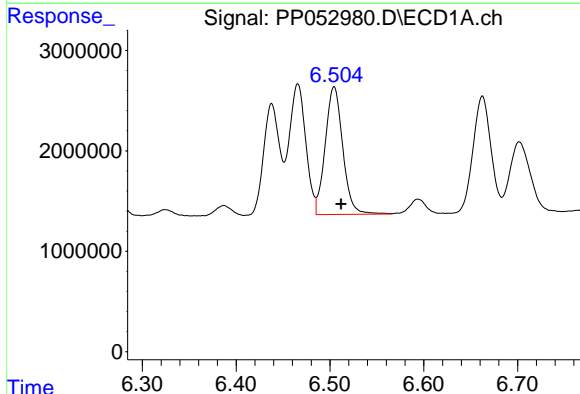
R.T.: 5.764 min
 Delta R.T.: -0.007 min
 Response: 16837600
 Conc: 415.64 ng/ml

Instrument :
 ECD_P
 ClientSampleId :



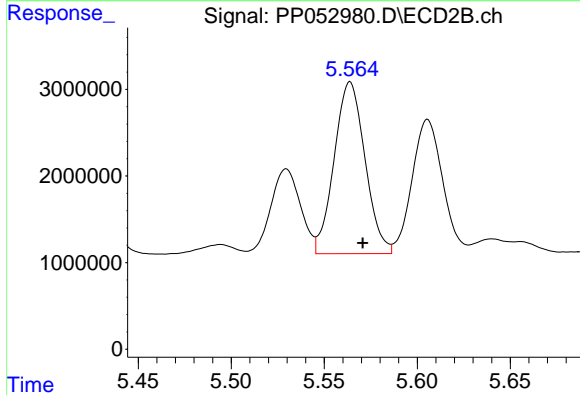
#19 AR-1242-4

R.T.: 5.033 min
 Delta R.T.: -0.007 min
 Response: 18732867
 Conc: 441.68 ng/ml



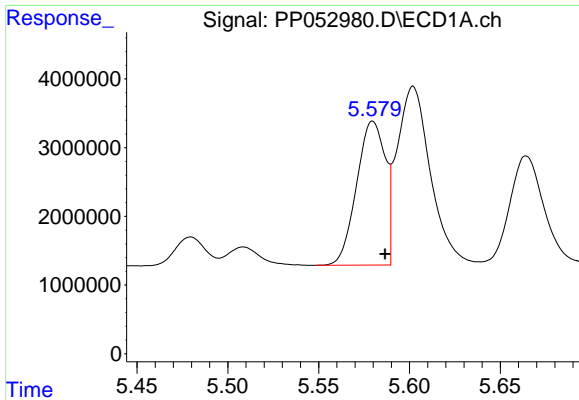
#20 AR-1242-5

R.T.: 6.504 min
 Delta R.T.: -0.007 min
 Response: 16556325
 Conc: 415.28 ng/ml



#20 AR-1242-5

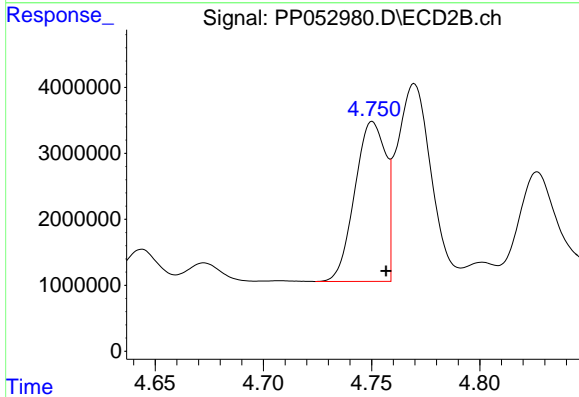
R.T.: 5.564 min
 Delta R.T.: -0.007 min
 Response: 22893878
 Conc: 452.91 ng/ml



#21 AR-1248-1

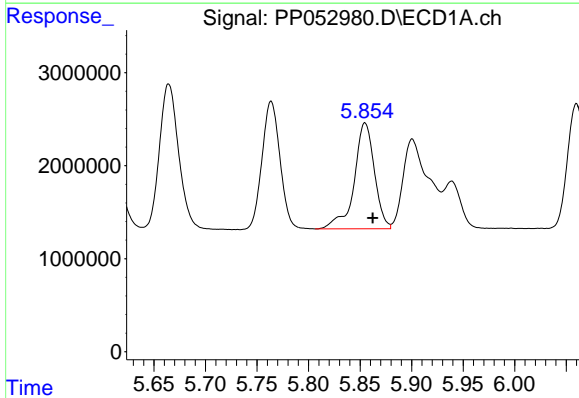
R.T.: 5.580 min
 Delta R.T.: -0.007 min
 Response: 22980797
 Conc: 565.80 ng/ml

Instrument :
 ECD_P
 ClientSampleId :



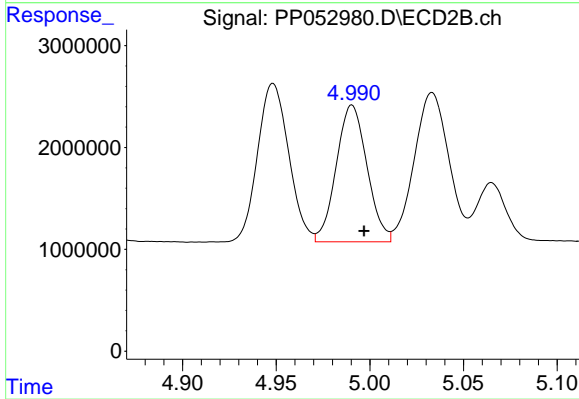
#21 AR-1248-1

R.T.: 4.750 min
 Delta R.T.: -0.006 min
 Response: 24051406
 Conc: 600.92 ng/ml



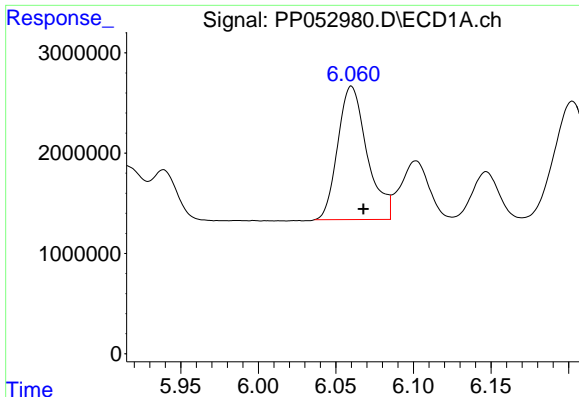
#22 AR-1248-2

R.T.: 5.855 min
 Delta R.T.: -0.007 min
 Response: 15561014
 Conc: 261.45 ng/ml



#22 AR-1248-2

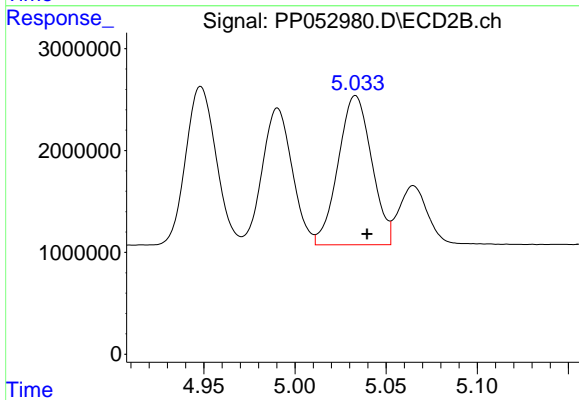
R.T.: 4.990 min
 Delta R.T.: -0.006 min
 Response: 15329662
 Conc: 270.74 ng/ml



#23 AR-1248-3

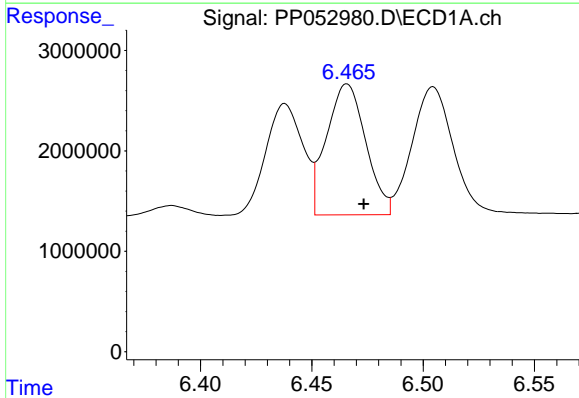
R.T.: 6.060 min
 Delta R.T.: -0.008 min
 Response: 17476883
 Conc: 269.21 ng/ml

Instrument :
 ECD_P
 ClientSampleId :



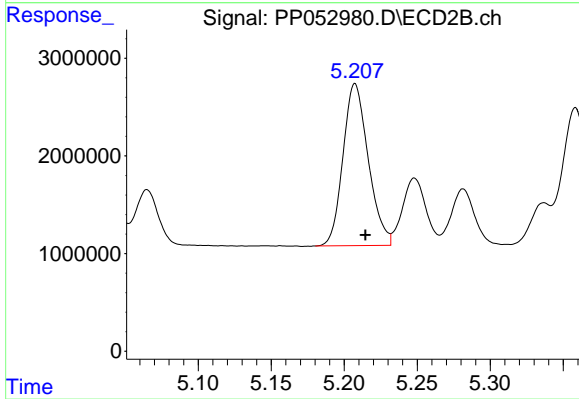
#23 AR-1248-3

R.T.: 5.033 min
 Delta R.T.: -0.006 min
 Response: 18732867
 Conc: 319.06 ng/ml



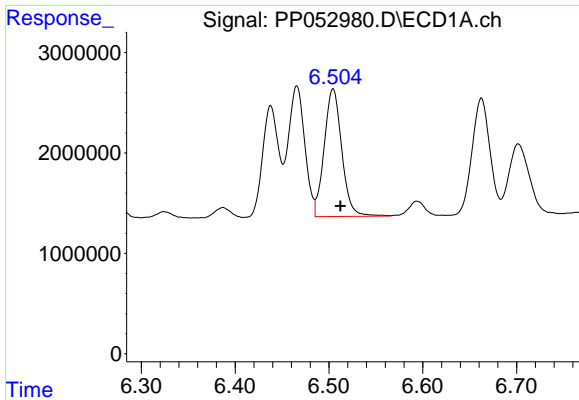
#24 AR-1248-4

R.T.: 6.466 min
 Delta R.T.: -0.008 min
 Response: 15998894
 Conc: 248.41 ng/ml



#24 AR-1248-4

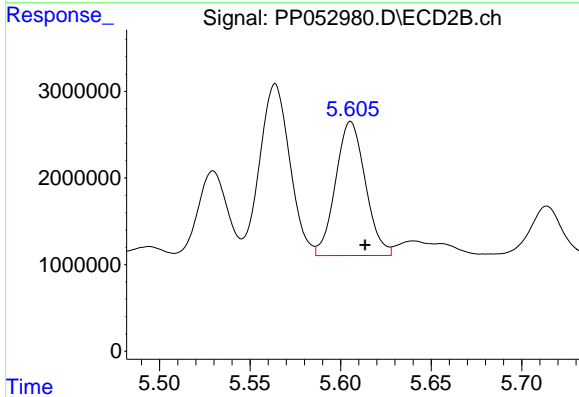
R.T.: 5.207 min
 Delta R.T.: -0.007 min
 Response: 19982928
 Conc: 286.98 ng/ml



#25 AR-1248-5

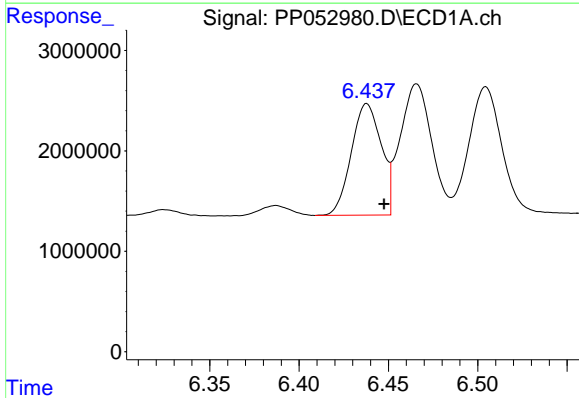
R.T.: 6.504 min
 Delta R.T.: -0.008 min
 Response: 16556325
 Conc: 261.35 ng/ml

Instrument :
 ECD_P
 ClientSampleId :



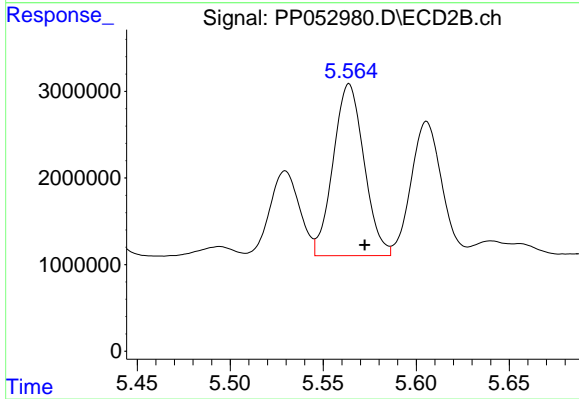
#25 AR-1248-5

R.T.: 5.606 min
 Delta R.T.: -0.008 min
 Response: 17729437
 Conc: 279.46 ng/ml



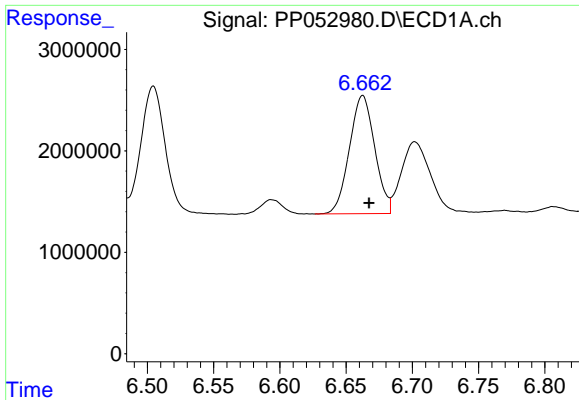
#26 AR-1254-1

R.T.: 6.438 min
 Delta R.T.: -0.010 min
 Response: 12952410
 Conc: 170.64 ng/ml



#26 AR-1254-1

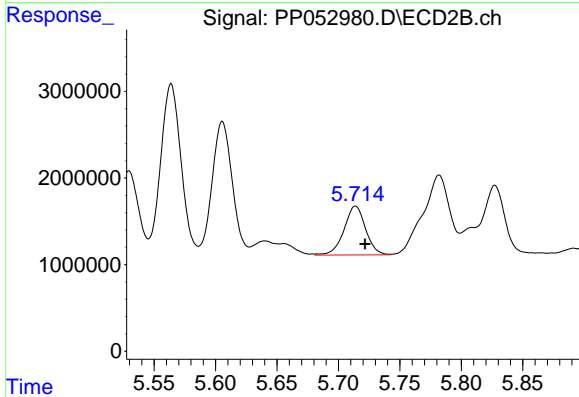
R.T.: 5.564 min
 Delta R.T.: -0.008 min
 Response: 22893878
 Conc: 213.20 ng/ml



#27 AR-1254-2

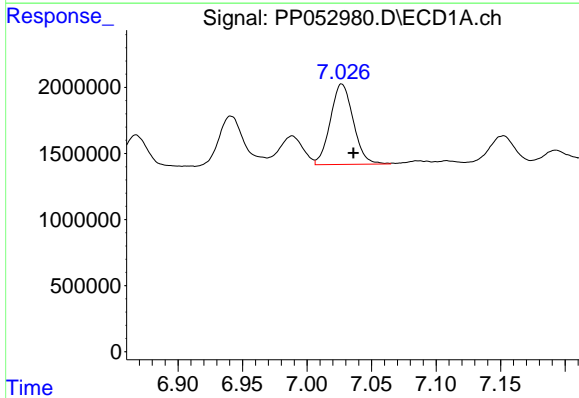
R.T.: 6.663 min
Delta R.T.: -0.005 min
Response: 15494119
Conc: 138.63 ng/ml

Instrument :
ECD_P
ClientSampleId :



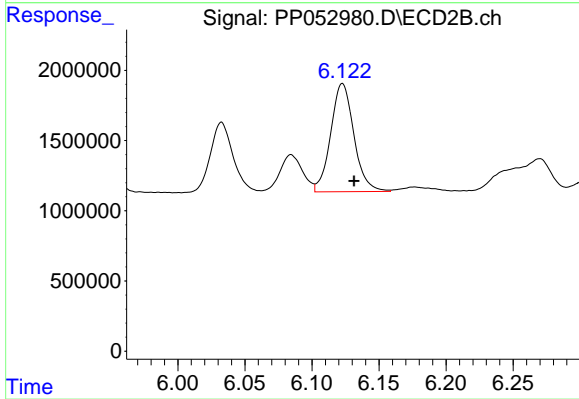
#27 AR-1254-2

R.T.: 5.714 min
Delta R.T.: -0.008 min
Response: 6905212
Conc: 72.24 ng/ml



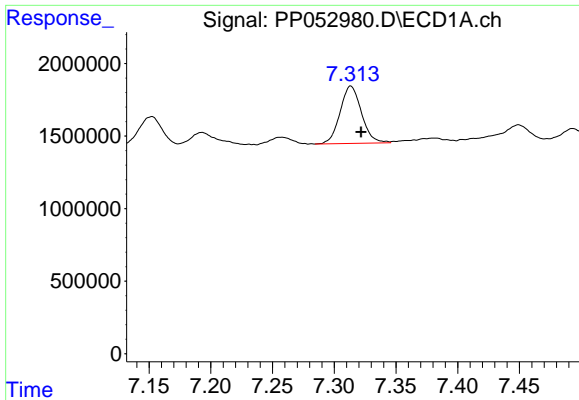
#28 AR-1254-3

R.T.: 7.027 min
Delta R.T.: -0.009 min
Response: 7534375
Conc: 67.69 ng/ml



#28 AR-1254-3

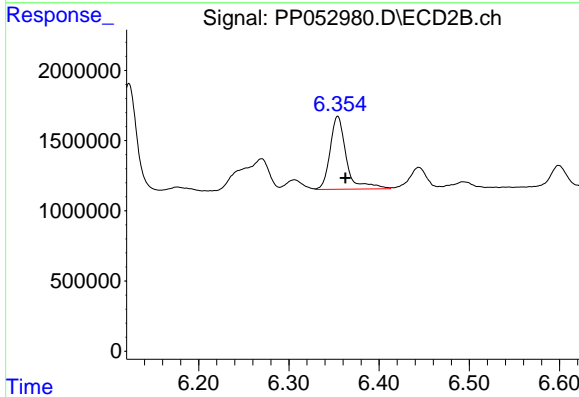
R.T.: 6.123 min
Delta R.T.: -0.009 min
Response: 9262721
Conc: 60.63 ng/ml



#29 AR-1254-4

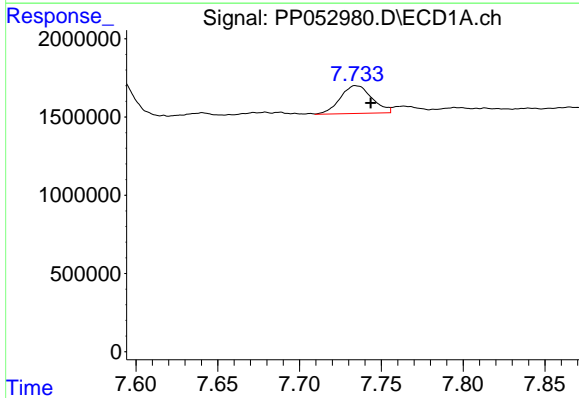
R.T.: 7.313 min
 Delta R.T.: -0.008 min
 Response: 4755681
 Conc: 67.53 ng/ml

Instrument :
 ECD_P
 ClientSampleId :



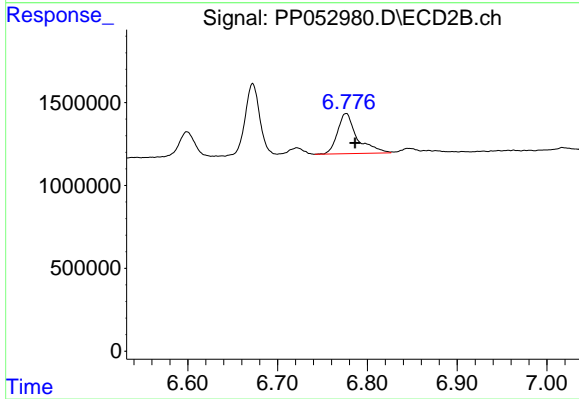
#29 AR-1254-4

R.T.: 6.354 min
 Delta R.T.: -0.009 min
 Response: 6510900
 Conc: 71.71 ng/ml



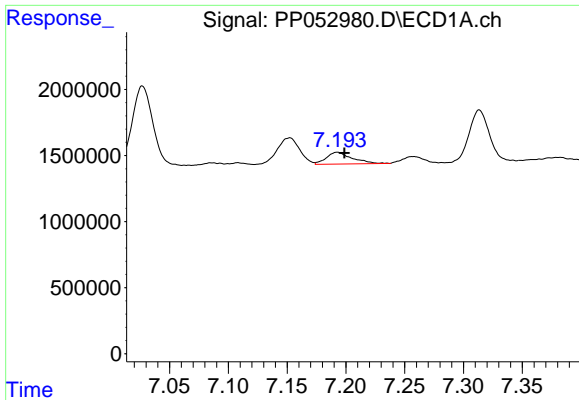
#30 AR-1254-5

R.T.: 7.735 min
 Delta R.T.: -0.009 min
 Response: 2392434
 Conc: 30.39 ng/ml



#30 AR-1254-5

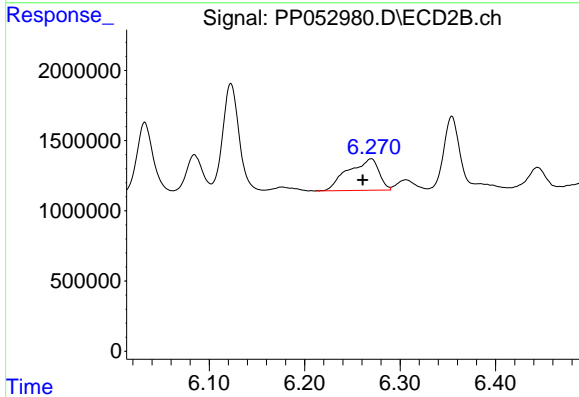
R.T.: 6.776 min
 Delta R.T.: -0.010 min
 Response: 3700770
 Conc: 26.60 ng/ml



#31 AR-1260-1

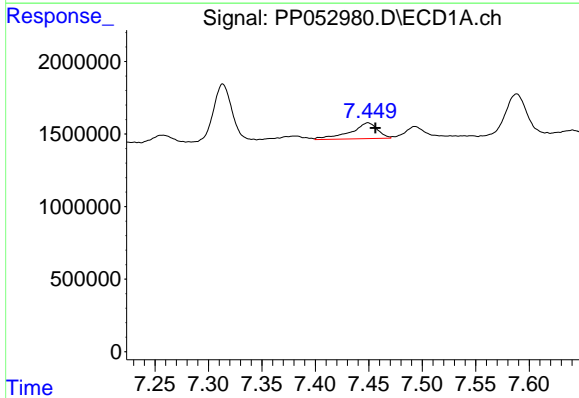
R.T.: 7.193 min
 Delta R.T.: -0.006 min
 Response: 1363039
 Conc: 15.96 ng/ml

Instrument :
 ECD_P
 ClientSampleId :



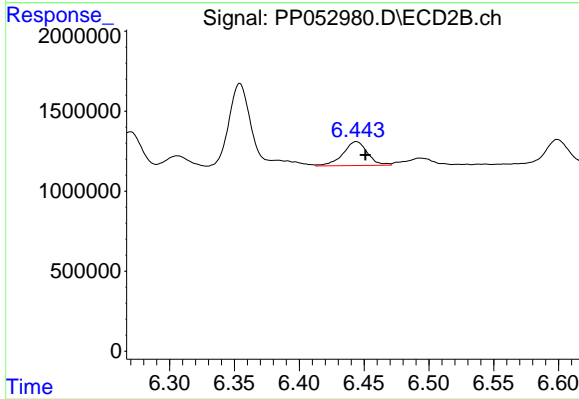
#31 AR-1260-1

R.T.: 6.270 min
 Delta R.T.: 0.009 min
 Response: 5035332
 Conc: 49.51 ng/ml



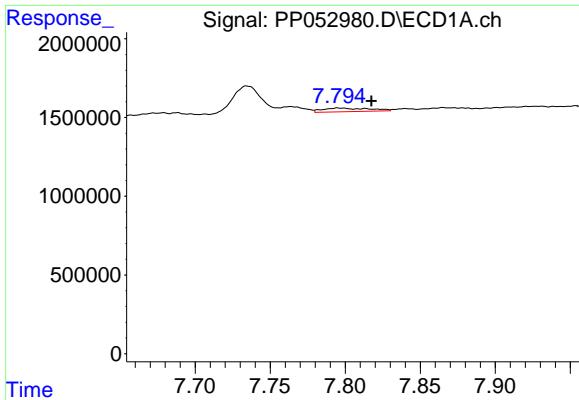
#32 AR-1260-2

R.T.: 7.449 min
 Delta R.T.: -0.007 min
 Response: 1923619
 Conc: 20.60 ng/ml



#32 AR-1260-2

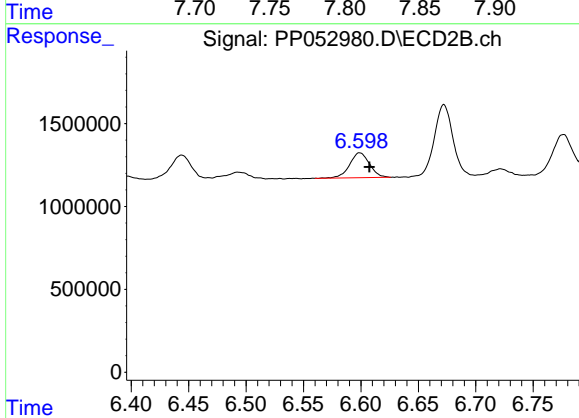
R.T.: 6.444 min
 Delta R.T.: -0.007 min
 Response: 1964690
 Conc: 16.16 ng/ml



#33 AR-1260-3

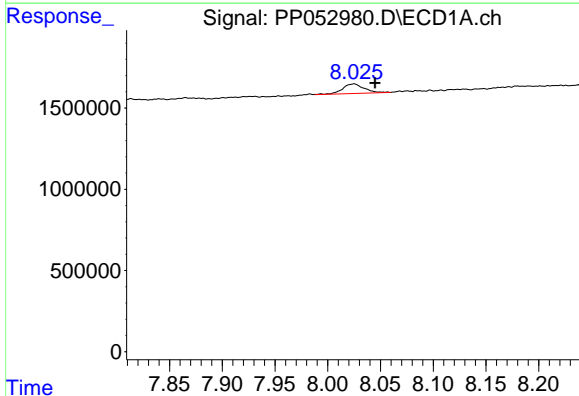
R.T.: 7.795 min
 Delta R.T.: -0.022 min
 Response: 493634
 Conc: 7.81 ng/ml

Instrument :
 ECD_P
 ClientSampleId :



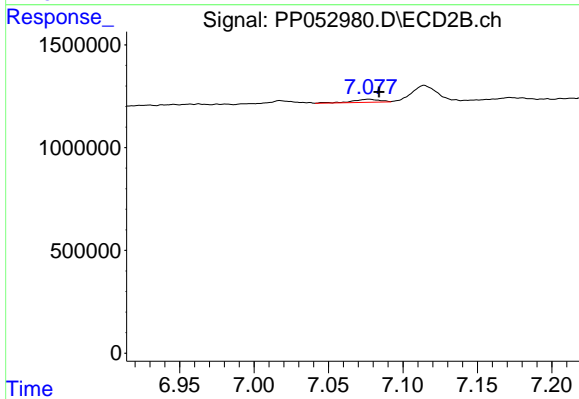
#33 AR-1260-3

R.T.: 6.599 min
 Delta R.T.: -0.008 min
 Response: 1816120
 Conc: 15.57 ng/ml



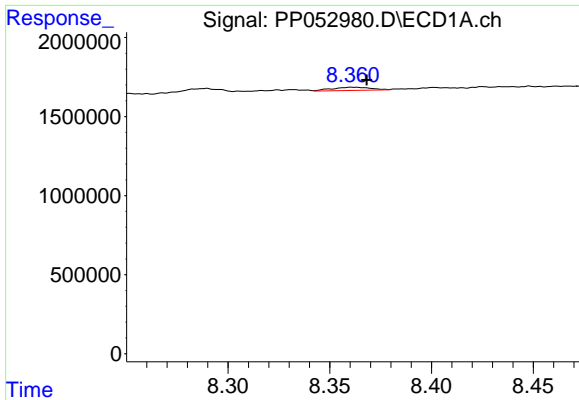
#34 AR-1260-4

R.T.: 8.025 min
 Delta R.T.: -0.020 min
 Response: 842534
 Conc: 11.77 ng/ml



#34 AR-1260-4

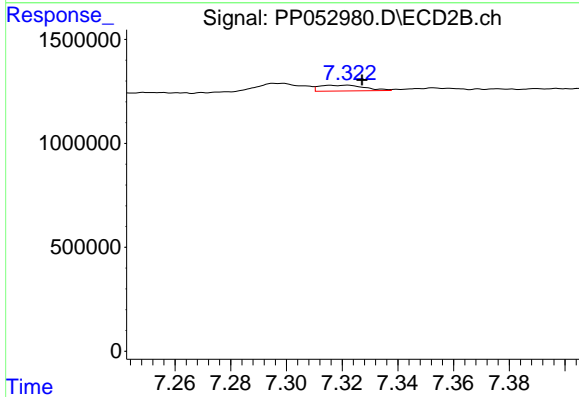
R.T.: 7.077 min
 Delta R.T.: -0.007 min
 Response: 187480
 Conc: 2.08 ng/ml



#35 AR-1260-5

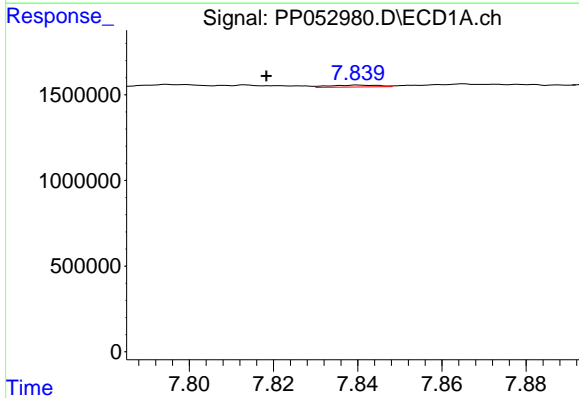
R.T.: 8.362 min
 Delta R.T.: -0.007 min
 Response: 269850
 Conc: 2.12 ng/ml

Instrument :
 ECD_P
 ClientSampleId :



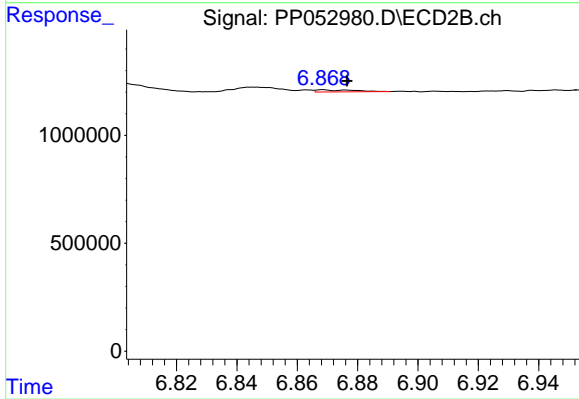
#35 AR-1260-5

R.T.: 7.322 min
 Delta R.T.: -0.005 min
 Response: 319232
 Conc: 1.56 ng/ml



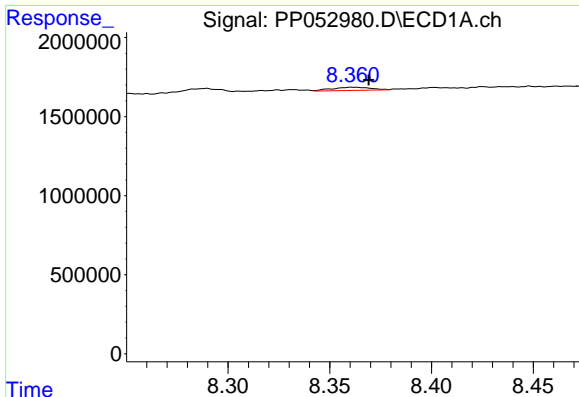
#36 AR-1262-1

R.T.: 7.840 min
 Delta R.T.: 0.022 min
 Response: 92705
 Conc: 0.97 ng/ml



#36 AR-1262-1

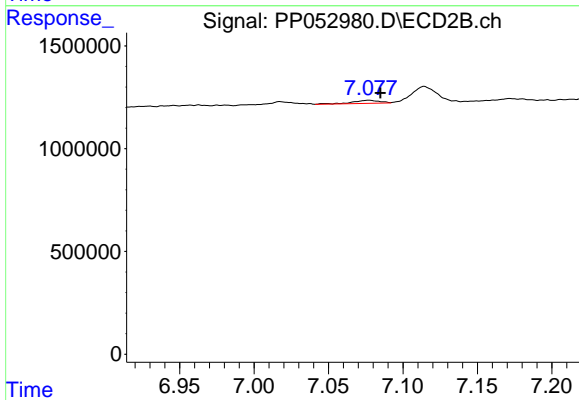
R.T.: 6.868 min
 Delta R.T.: -0.008 min
 Response: 83257
 Conc: 1.45 ng/ml



#37 AR-1262-2

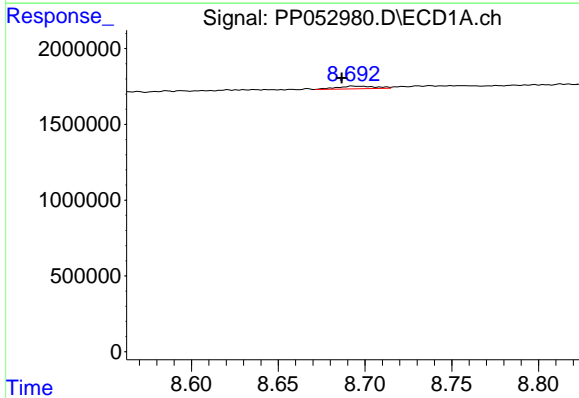
R.T.: 8.362 min
 Delta R.T.: -0.008 min
 Response: 269850
 Conc: 1.81 ng/ml

Instrument :
 ECD_P
 ClientSampleId :



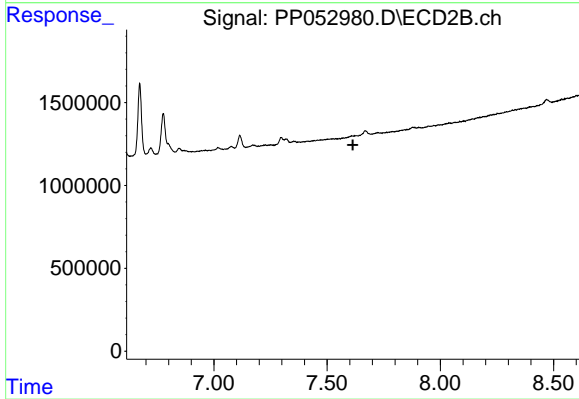
#37 AR-1262-2

R.T.: 7.077 min
 Delta R.T.: -0.008 min
 Response: 187480
 Conc: 1.51 ng/ml



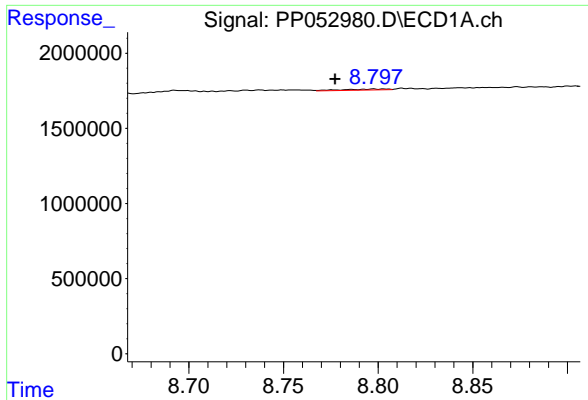
#38 AR-1262-3

R.T.: 8.693 min
 Delta R.T.: 0.007 min
 Response: 268009
 Conc: 2.70 ng/ml



#38 AR-1262-3

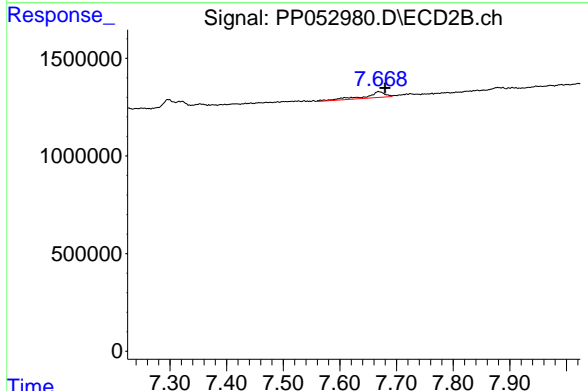
R.T.: 0.000 min
 Exp R.T. : 7.614 min
 Response: 0
 Conc: N.D.



#39 AR-1262-4

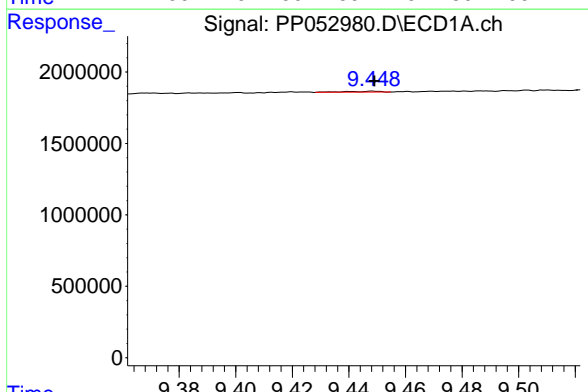
R.T.: 8.798 min
 Delta R.T.: 0.021 min
 Response: 107500
 Conc: 2.31 ng/ml

Instrument :
 ECD_P
 ClientSampleId :



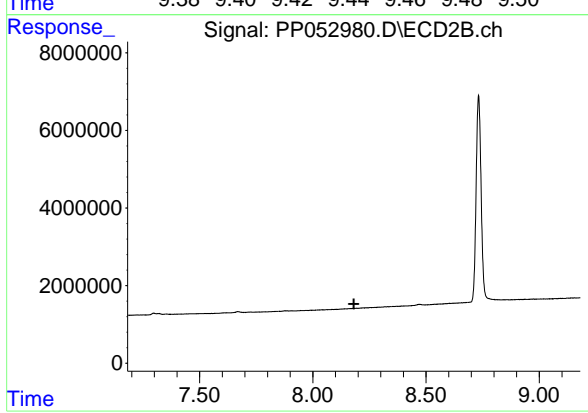
#39 AR-1262-4

R.T.: 7.668 min
 Delta R.T.: -0.011 min
 Response: 760864
 Conc: 4.25 ng/ml



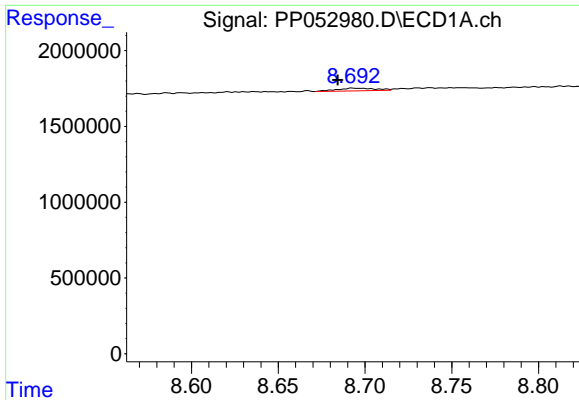
#40 AR-1262-5

R.T.: 9.449 min
 Delta R.T.: 0.000 min
 Response: 58486
 Conc: 1.28 ng/ml



#40 AR-1262-5

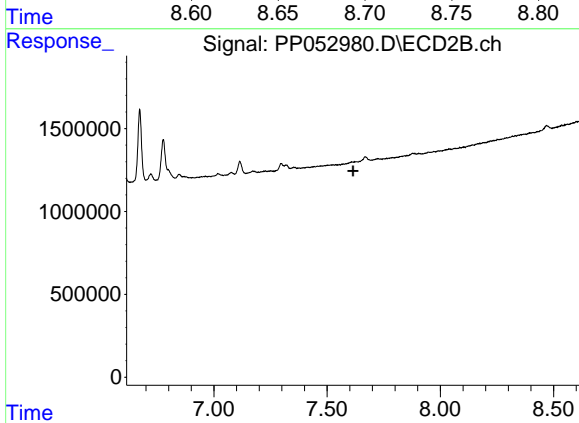
R.T.: 0.000 min
 Exp R.T. : 8.181 min
 Response: 0
 Conc: N.D.



#41 AR-1268-1

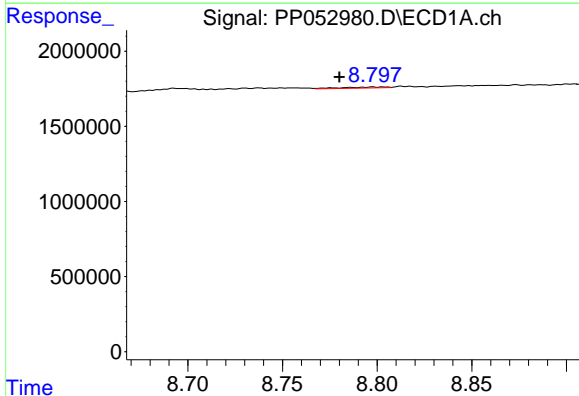
R.T.: 8.693 min
 Delta R.T.: 0.009 min
 Response: 268009
 Conc: 1.42 ng/ml

Instrument :
 ECD_P
 ClientSampleId :



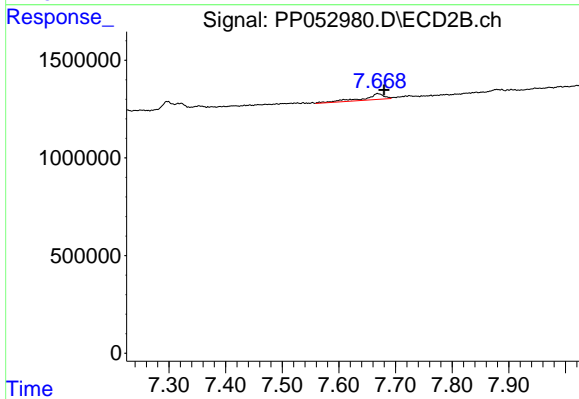
#41 AR-1268-1

R.T.: 0.000 min
 Exp R.T. : 7.614 min
 Response: 0
 Conc: N.D.



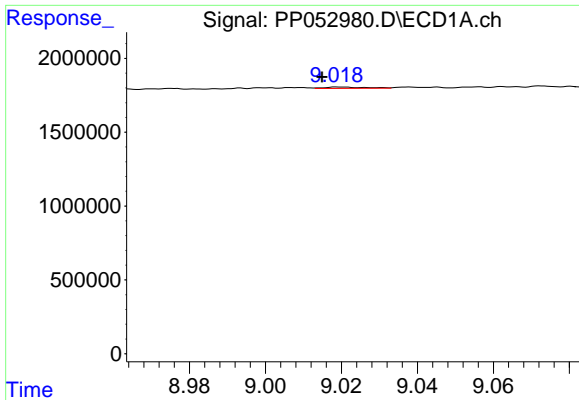
#42 AR-1268-2

R.T.: 8.798 min
 Delta R.T.: 0.018 min
 Response: 107500
 Conc: 0.66 ng/ml



#42 AR-1268-2

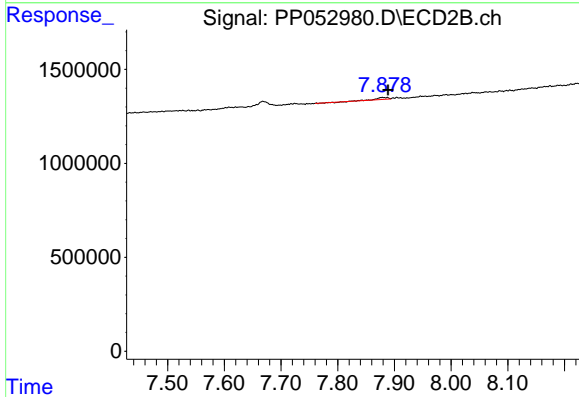
R.T.: 7.668 min
 Delta R.T.: -0.012 min
 Response: 760864
 Conc: 2.81 ng/ml



#43 AR-1268-3

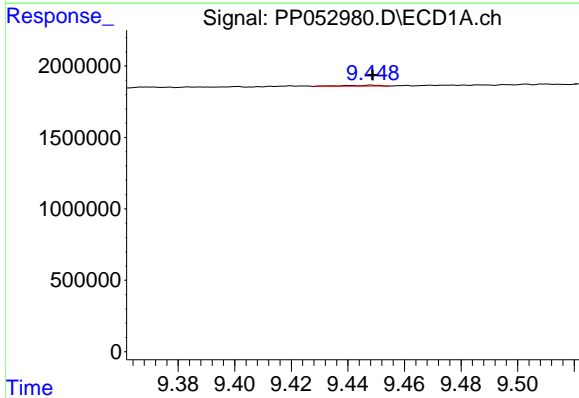
R.T.: 9.020 min
 Delta R.T.: 0.005 min
 Response: 68046
 Conc: 0.45 ng/ml

Instrument :
 ECD_P
 ClientSampleId :



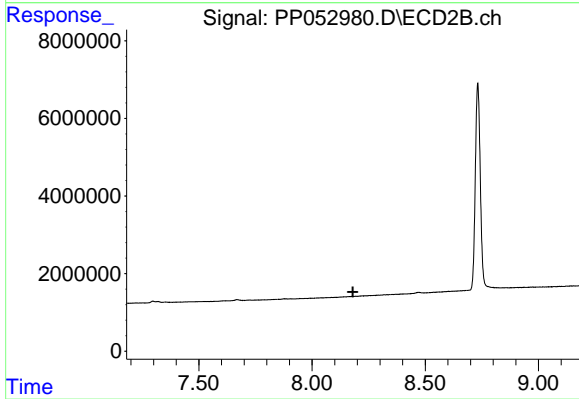
#43 AR-1268-3

R.T.: 7.888 min
 Delta R.T.: 0.000 min
 Response: 150792
 Conc: 0.64 ng/ml



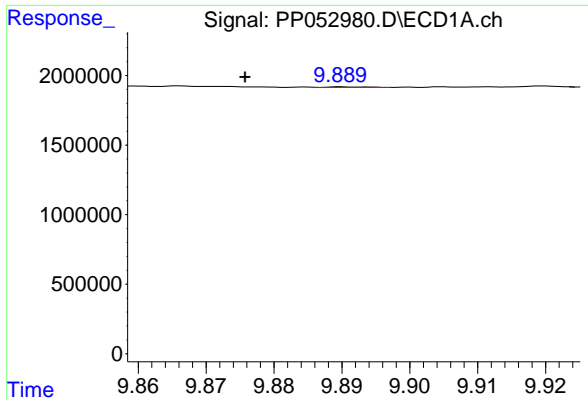
#44 AR-1268-4

R.T.: 9.449 min
 Delta R.T.: 0.000 min
 Response: 58486
 Conc: 1.15 ng/ml



#44 AR-1268-4

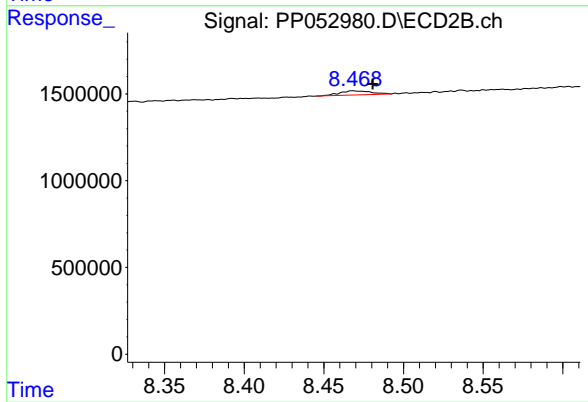
R.T.: 0.000 min
 Exp R.T. : 8.180 min
 Response: 0
 Conc: N.D.



#45 AR-1268-5

R.T.: 9.890 min
Delta R.T.: 0.014 min
Response: 18358
Conc: 0.04 ng/ml

Instrument :
ECD_P
ClientSampleId :



#45 AR-1268-5

R.T.: 8.469 min
Delta R.T.: -0.012 min
Response: 323168
Conc: 0.49 ng/ml