

Data Path : Z:\pestpcbsrv\HPCHEM1\ECD_P\Data\PP110222\
 Data File : PP052990.D
 Signal(s) : Signal #1: ECD1A.ch Signal #2: ECD2B.ch
 Acq On : 02 Nov 2022 15:14
 Operator : YP\AJ
 Sample : N5396-13
 Misc :
 ALS Vial : 18 Sample Multiplier: 1

Instrument :
 ECD_P
 ClientSampleId :
 TP-I

Integration File signal 1: autoint1.e
 Integration File signal 2: autoint2.e
 Quant Time: Nov 02 22:13:57 2022
 Quant Method : Z:\pestpcbsrv\HPCHEM1\ECD_P\methods\PP102622.M
 Quant Title : GC EXTRACTABLES
 QLast Update : Thu Oct 27 04:46:37 2022
 Response via : Initial Calibration
 Integrator: ChemStation

Volume Inj. : 2 µl
 Signal #1 Phase : ZB-MR1 Signal #2 Phase: ZB-MR2
 Signal #1 Info : 30Mx0.32mmx 0.50µ Signal #2 Info : 30M x 0.32mm x 0.25µm

Compound	RT#1	RT#2	Resp#1	Resp#2	ng/ml	ng/ml

System Monitoring Compounds						
1) SA Tetrachlo...	4.408	3.652	38054458	35089432	17.222	18.672
2) SA Decachlor...	10.213	8.735	18593823	21373261	14.649	12.744

Target Compounds

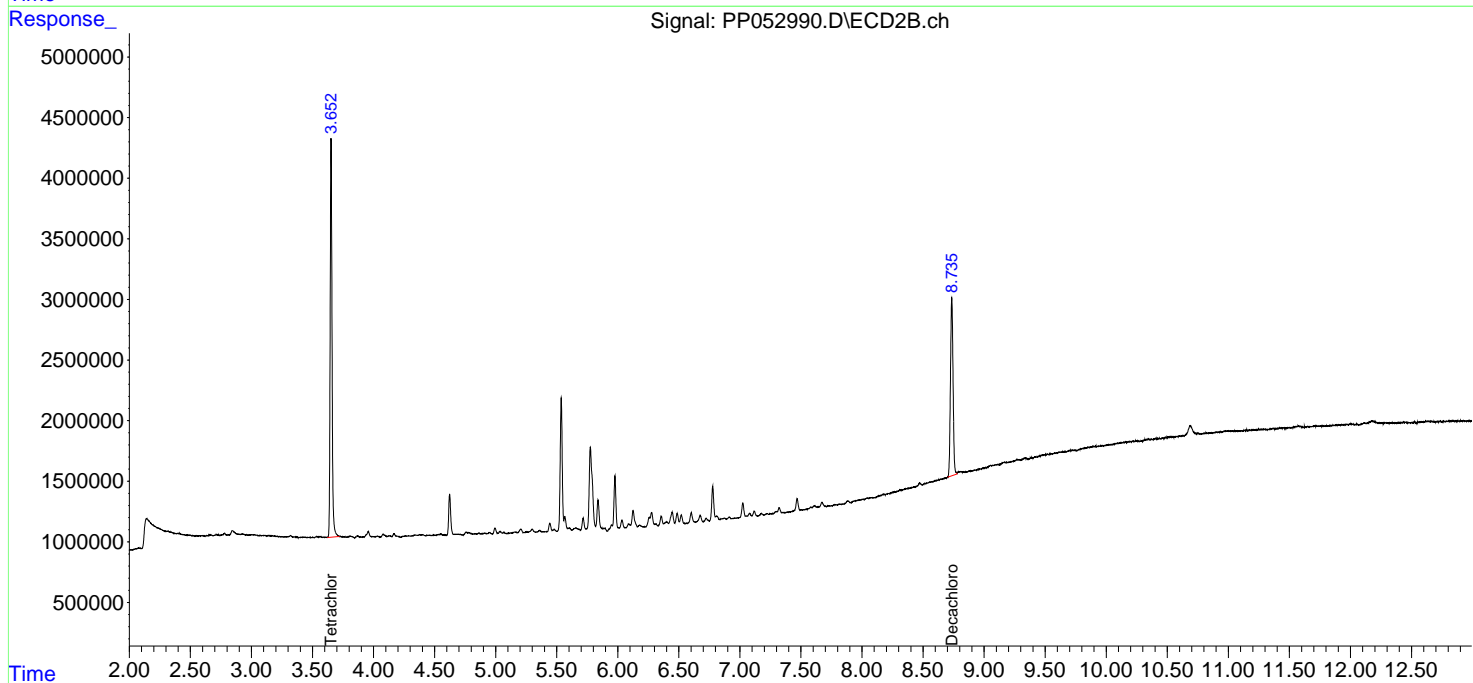
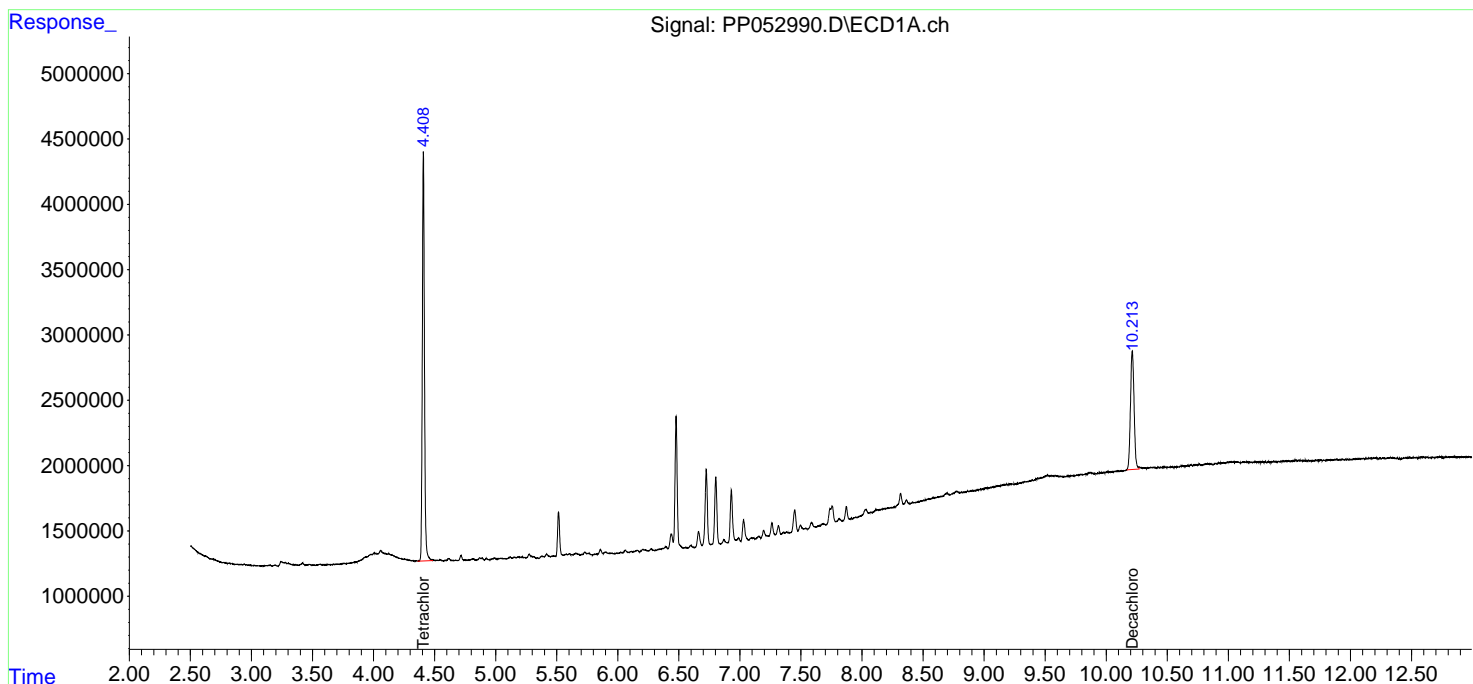
 (f)=RT Delta > 1/2 Window (#)=Amounts differ by > 25% (m)=manual int.

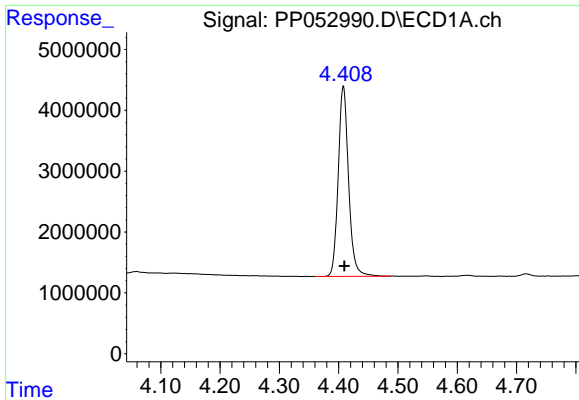
Data Path : Z:\pestpcbsrv\HPCHEM1\ECD_P\Data\PP110222\
Data File : PP052990.D
Signal(s) : Signal #1: ECD1A.ch Signal #2: ECD2B.ch
Acq On : 02 Nov 2022 15:14
Operator : YP\AJ
Sample : N5396-13
Misc :
ALS Vial : 18 Sample Multiplier: 1

Instrument :
ECD_P
ClientSampleId :
TP-I

Integration File signal 1: autoint1.e
Integration File signal 2: autoint2.e
Quant Time: Nov 02 22:13:57 2022
Quant Method : Z:\pestpcbsrv\HPCHEM1\ECD_P\methods\PP102622.M
Quant Title : GC EXTRACTABLES
QLast Update : Thu Oct 27 04:46:37 2022
Response via : Initial Calibration
Integrator: ChemStation

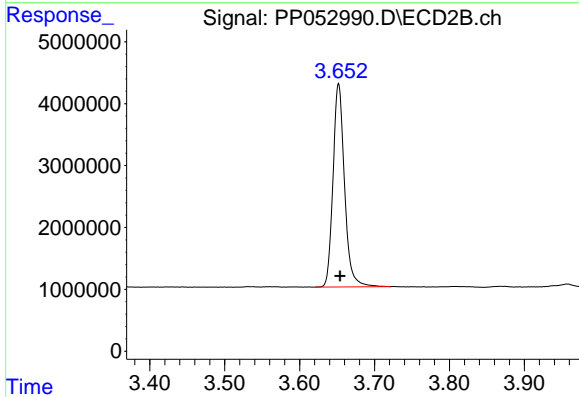
Volume Inj. : 2 µl
Signal #1 Phase : ZB-MR1 Signal #2 Phase: ZB-MR2
Signal #1 Info : 30Mx0.32mmx 0.50µ Signal #2 Info : 30M x 0.32mm x 0.25µm



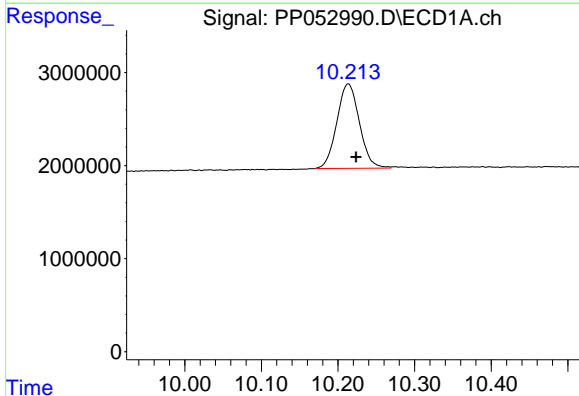


#1 Tetrachloro-m-xylene
R.T.: 4.408 min
Delta R.T.: -0.002 min
Response: 38054458
Conc: 17.22 ng/ml

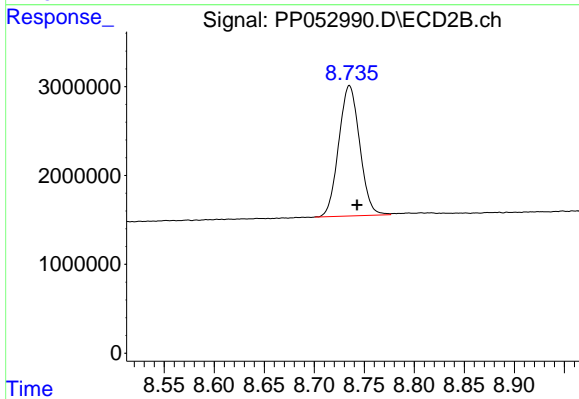
Instrument :
ECD_P
ClientSampleId :
TP-I



#1 Tetrachloro-m-xylene
R.T.: 3.652 min
Delta R.T.: -0.002 min
Response: 35089432
Conc: 18.67 ng/ml



#2 Decachlorobiphenyl
R.T.: 10.213 min
Delta R.T.: -0.010 min
Response: 18593823
Conc: 14.65 ng/ml



#2 Decachlorobiphenyl
R.T.: 8.735 min
Delta R.T.: -0.008 min
Response: 21373261
Conc: 12.74 ng/ml