

Data Path : Z:\pestpcbsrv\HPCHEM1\ECD_P\Data\PP110222\
 Data File : PP053007.D
 Signal(s) : Signal #1: ECD1A.ch Signal #2: ECD2B.ch
 Acq On : 02 Nov 2022 20:56
 Operator : YP\AJ
 Sample : N5395-10
 Misc :
 ALS Vial : 32 Sample Multiplier: 1

Instrument :
 ECD_P
ClientSampleId :
 S-7-103122

Manual Integrations
APPROVED

Reviewed By :Yogesh Patel 11/03/2022
 Supervised By :Ankita Jodhani 11/03/2022

Integration File signal 1: autoint1.e
 Integration File signal 2: autoint2.e
 Quant Time: Nov 02 22:36:06 2022
 Quant Method : Z:\pestpcbsrv\HPCHEM1\ECD_P\methods\PP102622.M
 Quant Title : GC EXTRACTABLES
 QLast Update : Thu Oct 27 04:46:37 2022
 Response via : Initial Calibration
 Integrator: ChemStation

Volume Inj. : 2 µl
 Signal #1 Phase : ZB-MR1 Signal #2 Phase: ZB-MR2
 Signal #1 Info : 30Mx0.32mmx 0.50µ Signal #2 Info : 30M x 0.32mm x 0.25µm

Compound	RT#1	RT#2	Resp#1	Resp#2	ng/ml	ng/ml

System Monitoring Compounds						
1) SA Tetrachlo...	4.406	3.650	42314149	37572770	19.149	19.994
2) SA Decachlor...	10.211	8.732	23311404	27573086	18.365	16.441
Target Compounds						
26) L6 AR-1254-1	6.441	5.564	2131348	1494804	28.079	13.920 #
27) L6 AR-1254-2	6.660	5.715	2047689	1270911	18.321	13.296 #
28) L6 AR-1254-3	7.029	6.124	2709612	2328618	24.343	15.241 #
29) L6 AR-1254-4	7.314	6.354	954505	1039766	13.554	11.452
30) L6 AR-1254-5	7.735	6.776	1274330	1717936	16.185m	12.348

(f)=RT Delta > 1/2 Window (#)=Amounts differ by > 25% (m)=manual int.

Data Path : Z:\pestpcbsrv\HPCHEM1\ECD_P\Data\PP110222\
 Data File : PP053007.D
 Signal(s) : Signal #1: ECD1A.ch Signal #2: ECD2B.ch
 Acq On : 02 Nov 2022 20:56
 Operator : YP\AJ
 Sample : N5395-10
 Misc :
 ALS Vial : 32 Sample Multiplier: 1

Instrument :

ECD_P

ClientSampleId :

S-7-103122

Manual Integrations

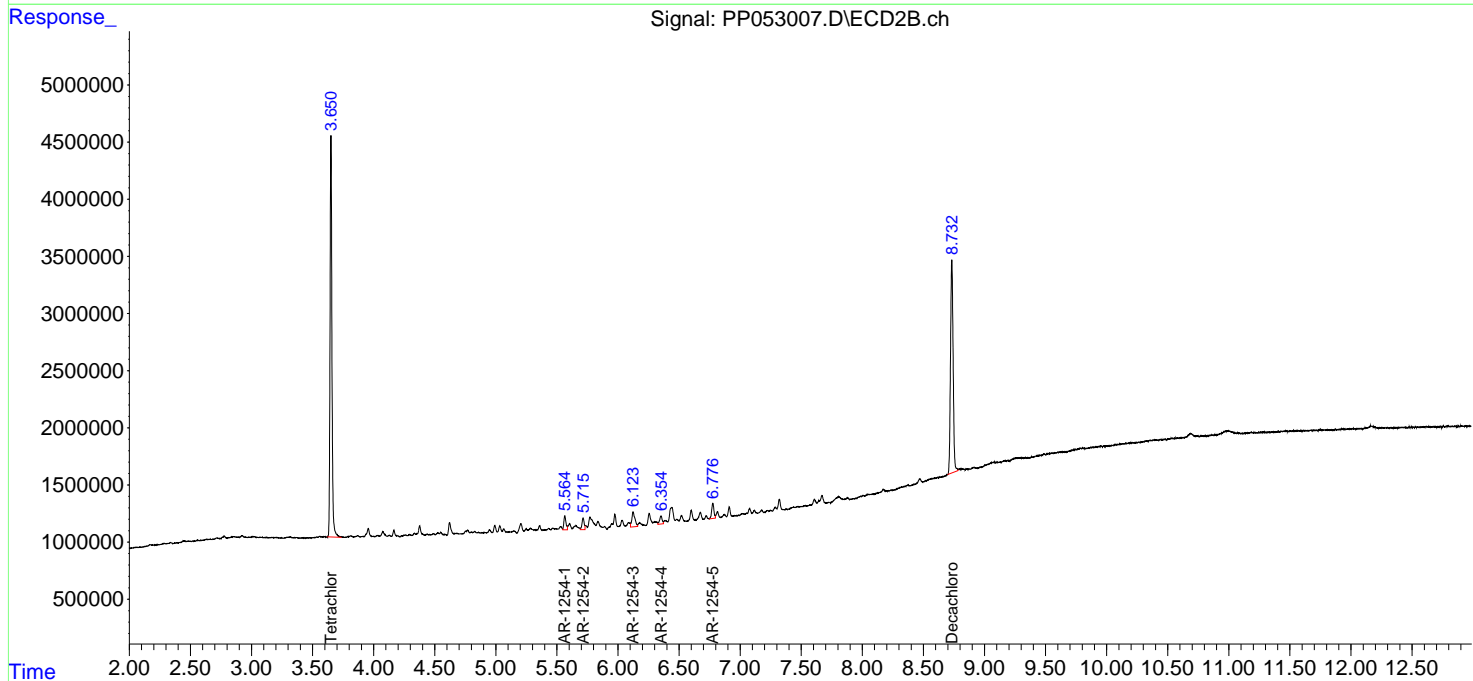
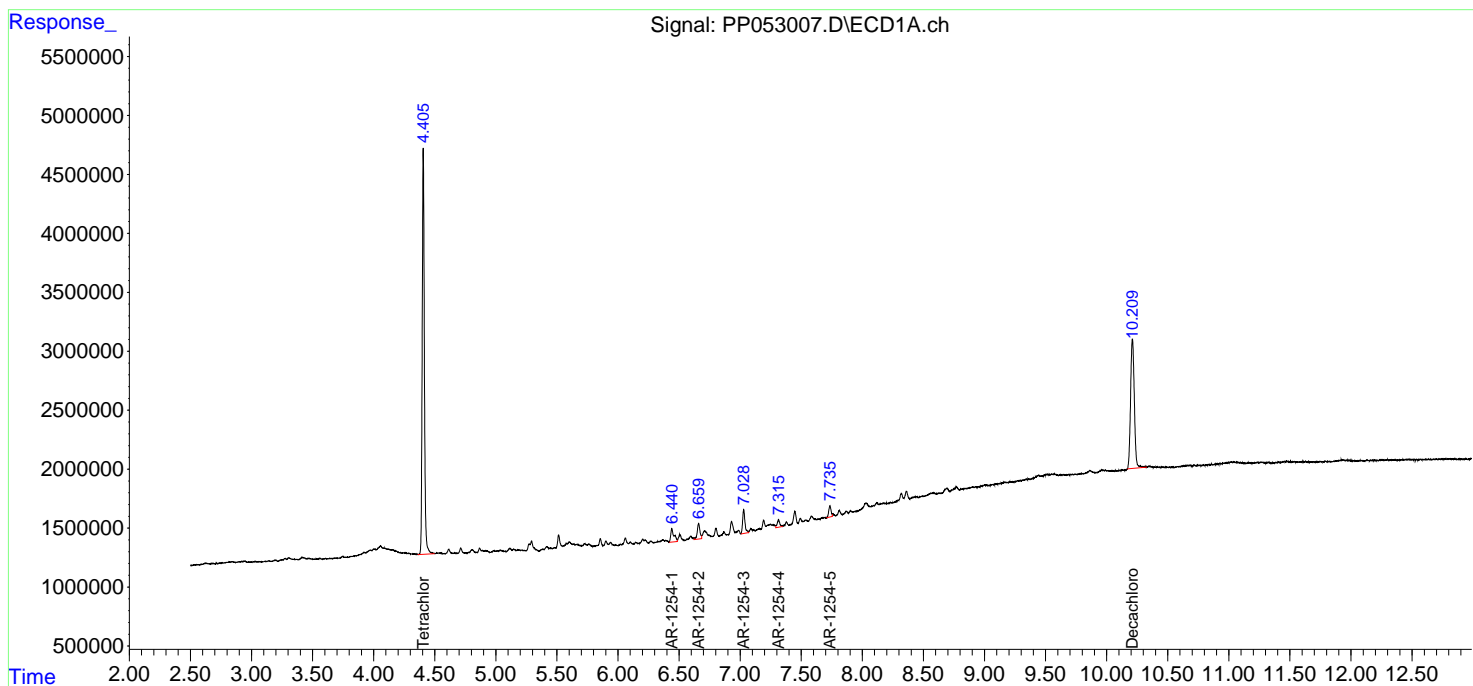
APPROVED

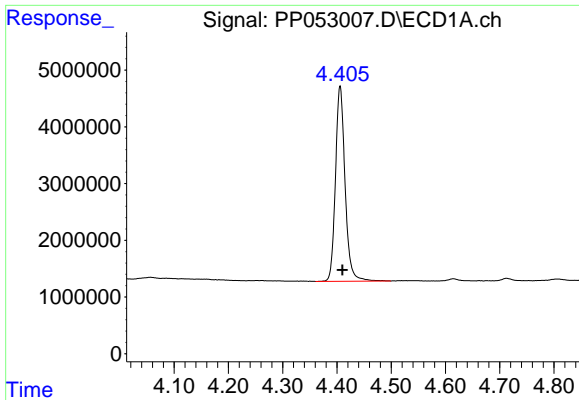
Reviewed By :Yogesh Patel 11/03/2022

Supervised By :Ankita Jodhani 11/03/2022

Integration File signal 1: autoint1.e
 Integration File signal 2: autoint2.e
 Quant Time: Nov 02 22:36:06 2022
 Quant Method : Z:\pestpcbsrv\HPCHEM1\ECD_P\methods\PP102622.M
 Quant Title : GC EXTRACTABLES
 QLast Update : Thu Oct 27 04:46:37 2022
 Response via : Initial Calibration
 Integrator: ChemStation

Volume Inj. : 2 µl
 Signal #1 Phase : ZB-MR1 Signal #2 Phase: ZB-MR2
 Signal #1 Info : 30Mx0.32mmx 0.50µ Signal #2 Info : 30M x 0.32mm x 0.25µm



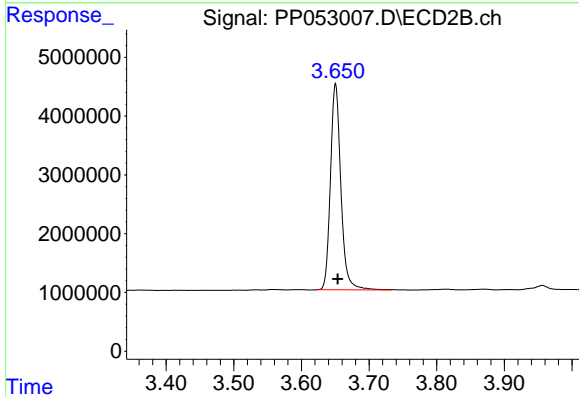


#1 Tetrachloro-m-xylene
 R.T.: 4.406 min
 Delta R.T.: -0.004 min
 Response: 42314149
 Conc: 19.15 ng/ml

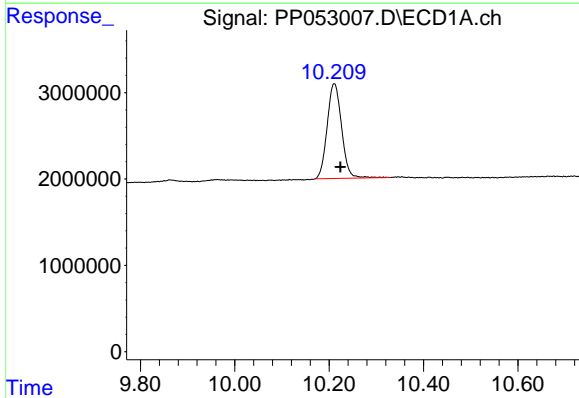
Instrument :
 ECD_P
 ClientSampleId :
 S-7-103122

Manual Integrations
 APPROVED

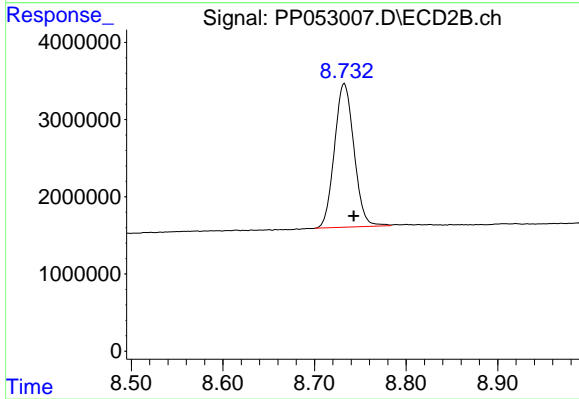
Reviewed By :Yogesh Patel 11/03/2022
 Supervised By :Ankita Jodhani 11/03/2022



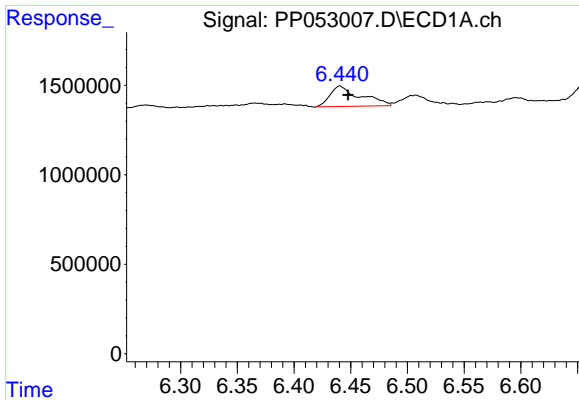
#1 Tetrachloro-m-xylene
 R.T.: 3.650 min
 Delta R.T.: -0.003 min
 Response: 37572770
 Conc: 19.99 ng/ml



#2 Decachlorobiphenyl
 R.T.: 10.211 min
 Delta R.T.: -0.013 min
 Response: 23311404
 Conc: 18.37 ng/ml



#2 Decachlorobiphenyl
 R.T.: 8.732 min
 Delta R.T.: -0.010 min
 Response: 27573086
 Conc: 16.44 ng/ml



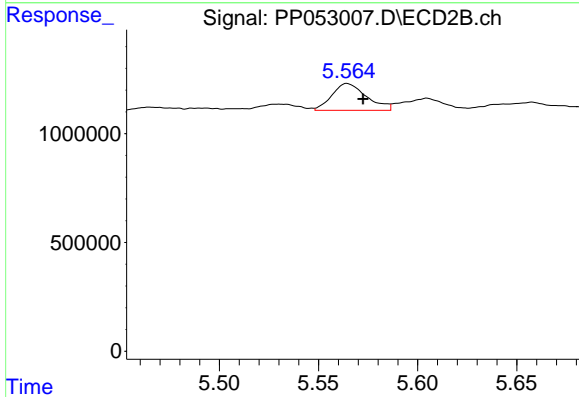
#26 AR-1254-1

R.T.: 6.441 min
 Delta R.T.: -0.007 min
 Response: 2131348
 Conc: 28.08 ng/ml

Instrument :
 ECD_P
 ClientSampleId :
 S-7-103122

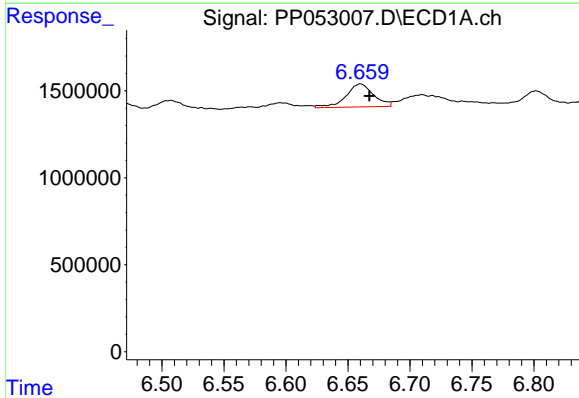
Manual Integrations
 APPROVED

Reviewed By :Yogesh Patel 11/03/2022
 Supervised By :Ankita Jodhani 11/03/2022



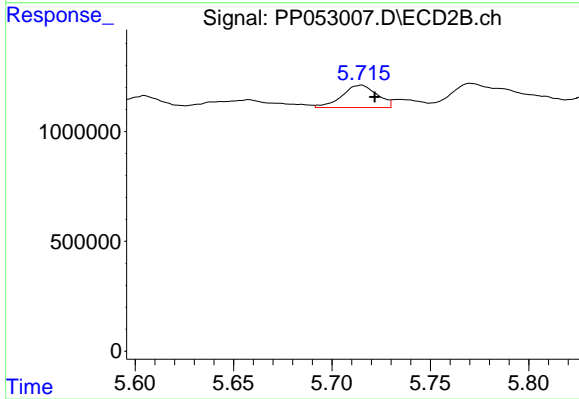
#26 AR-1254-1

R.T.: 5.564 min
 Delta R.T.: -0.008 min
 Response: 1494804
 Conc: 13.92 ng/ml



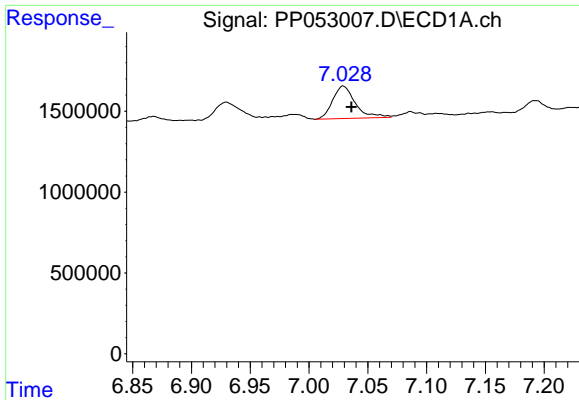
#27 AR-1254-2

R.T.: 6.660 min
 Delta R.T.: -0.007 min
 Response: 2047689
 Conc: 18.32 ng/ml



#27 AR-1254-2

R.T.: 5.715 min
 Delta R.T.: -0.007 min
 Response: 1270911
 Conc: 13.30 ng/ml



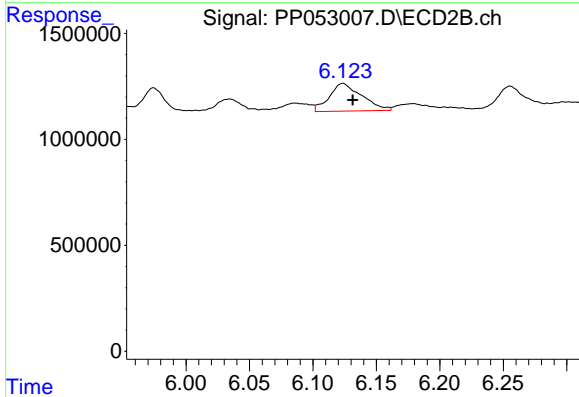
#28 AR-1254-3

R.T.: 7.029 min
 Delta R.T.: -0.007 min
 Response: 2709612
 Conc: 24.34 ng/ml

Instrument :
 ECD_P
 ClientSampleId :
 S-7-103122

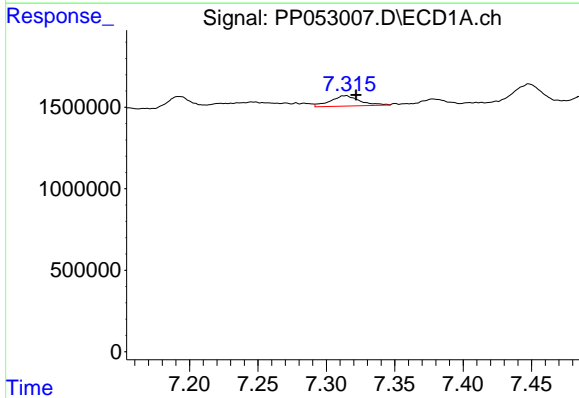
Manual Integrations
 APPROVED

Reviewed By :Yogesh Patel 11/03/2022
 Supervised By :Ankita Jodhani 11/03/2022



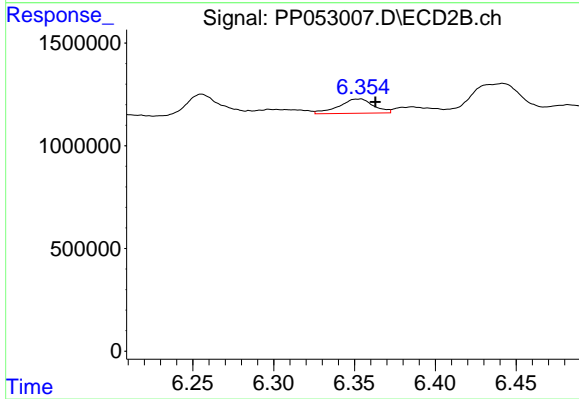
#28 AR-1254-3

R.T.: 6.124 min
 Delta R.T.: -0.008 min
 Response: 2328618
 Conc: 15.24 ng/ml



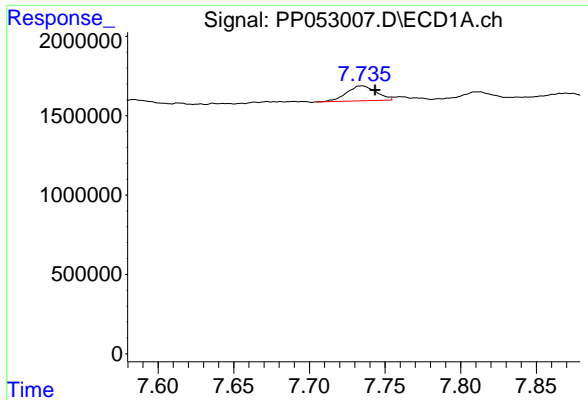
#29 AR-1254-4

R.T.: 7.314 min
 Delta R.T.: -0.008 min
 Response: 954505
 Conc: 13.55 ng/ml



#29 AR-1254-4

R.T.: 6.354 min
 Delta R.T.: -0.009 min
 Response: 1039766
 Conc: 11.45 ng/ml



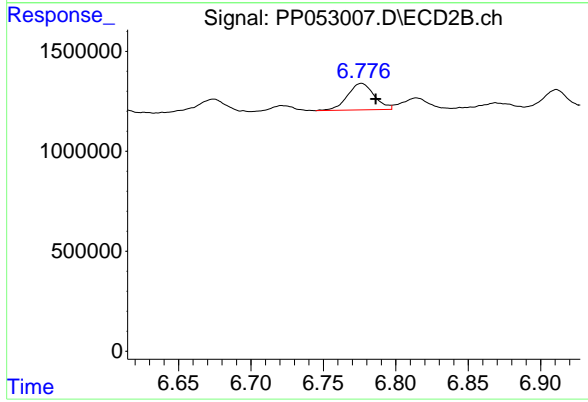
#30 AR-1254-5

R.T.: 7.735 min
Delta R.T.: -0.009 min
Response: 1274330
Conc: 16.19 ng/ml

Instrument :
ECD_P
ClientSampleId :
S-7-103122

Manual Integrations
APPROVED

Reviewed By :Yogesh Patel 11/03/2022
Supervised By :Ankita Jodhani 11/03/2022



#30 AR-1254-5

R.T.: 6.776 min
Delta R.T.: -0.010 min
Response: 1717936
Conc: 12.35 ng/ml