

Data Path : Z:\pestpcbsrv\HPCHEM1\ECD_P\Data\PP110222\
 Data File : PP053011.D
 Signal(s) : Signal #1: ECD1A.ch Signal #2: ECD2B.ch
 Acq On : 02 Nov 2022 22:22
 Operator : YP\AJ
 Sample : AR1660CCC500
 Misc :
 ALS Vial : 3 Sample Multiplier: 1

Instrument :
 ECD_P
 ClientSampleId :
 AR1660CCC500

Integration File signal 1: autoint1.e
 Integration File signal 2: autoint2.e
 Quant Time: Nov 03 04:17:19 2022
 Quant Method : Z:\pestpcbsrv\HPCHEM1\ECD_P\methods\PP102622.M
 Quant Title : GC EXTRACTABLES
 QLast Update : Thu Oct 27 04:46:37 2022
 Response via : Initial Calibration
 Integrator: ChemStation

Volume Inj. : 2 µl
 Signal #1 Phase : ZB-MR1 Signal #2 Phase: ZB-MR2
 Signal #1 Info : 30Mx0.32mmx 0.50µ Signal #2 Info : 30M x 0.32mm x 0.25µm

Compound	RT#1	RT#2	Resp#1	Resp#2	ng/ml	ng/ml

System Monitoring Compounds						
1) SA Tetrachlo...	4.406	3.650	102.7E6	90901294	46.497	48.372
2) SA Decachlor...	10.210	8.732	69072872	80525588	54.418	48.014
Target Compounds						
3) L1 AR-1016-1	5.579	4.750	31999194	31947511	477.286	485.347
4) L1 AR-1016-2	5.601	4.769	46892188	45482646	469.466	495.434
5) L1 AR-1016-3	5.664	4.948	28840575	24240480	473.878	498.569
6) L1 AR-1016-4	5.763	4.991	23273477	19569321	480.593	502.298
7) L1 AR-1016-5	6.059	5.207	22902235	25681422	475.497	511.114
31) L7 AR-1260-1	7.191	6.254	41226240	49122332	482.599	482.955
32) L7 AR-1260-2	7.448	6.444	46099484	59506293	493.670	489.307
33) L7 AR-1260-3	7.809	6.599	30860807	56239569	488.415	482.133
34) L7 AR-1260-4	8.037	7.076	36893796	41718724	515.261	463.333
35) L7 AR-1260-5	8.360	7.319	67003487	93777866	527.148	457.793

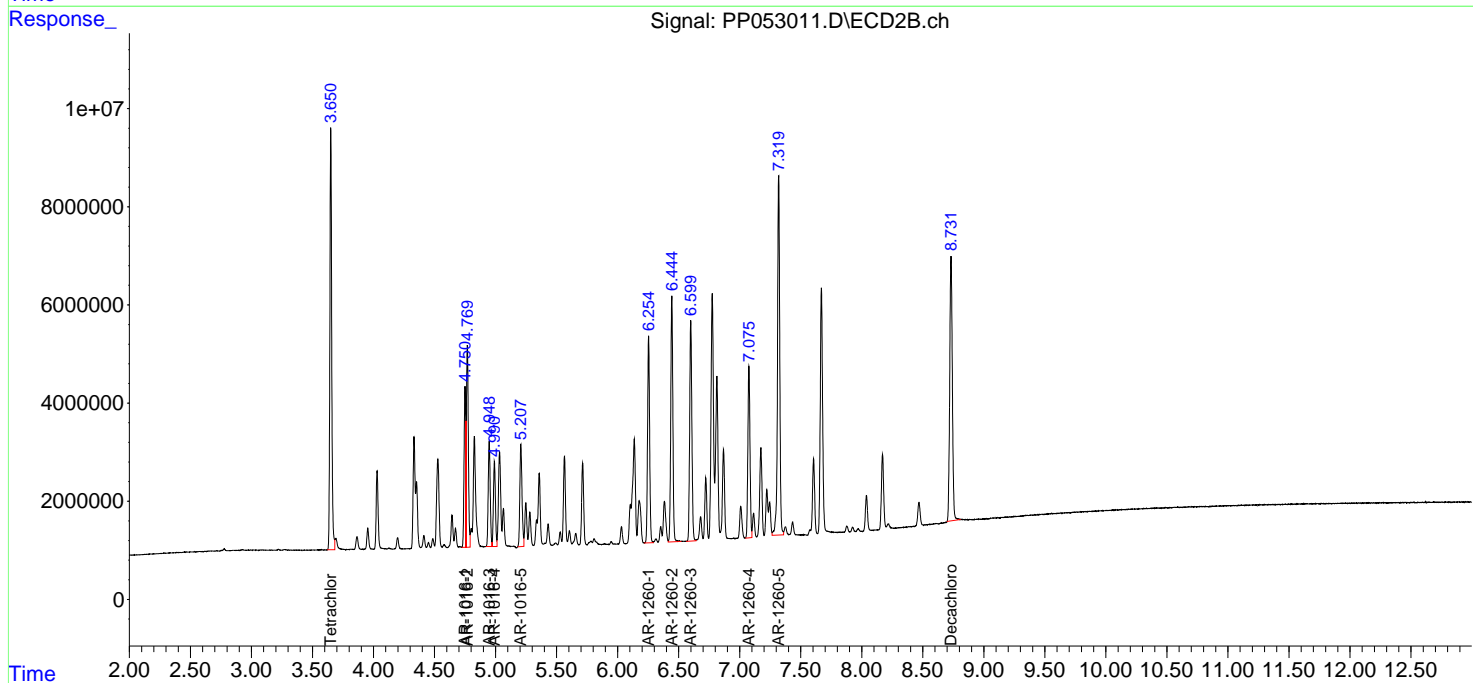
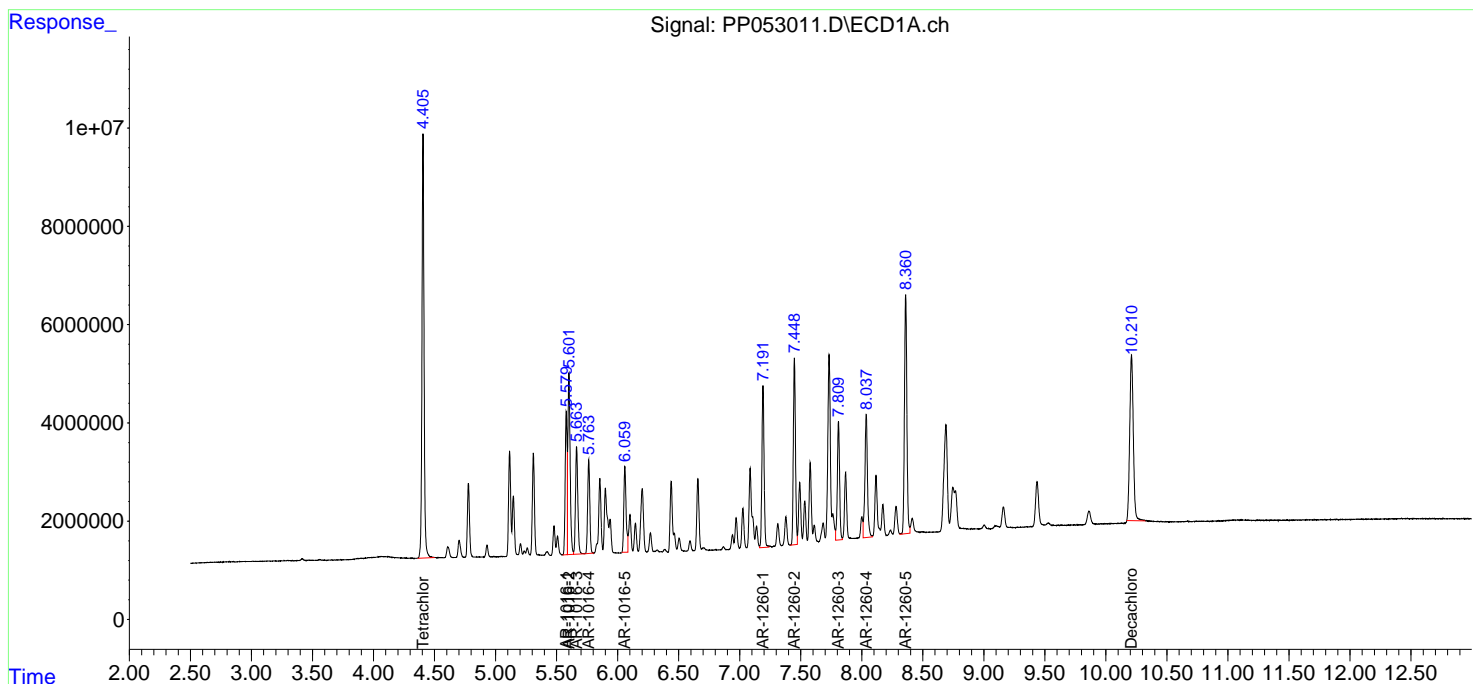
(f)=RT Delta > 1/2 Window (#)=Amounts differ by > 25% (m)=manual int.

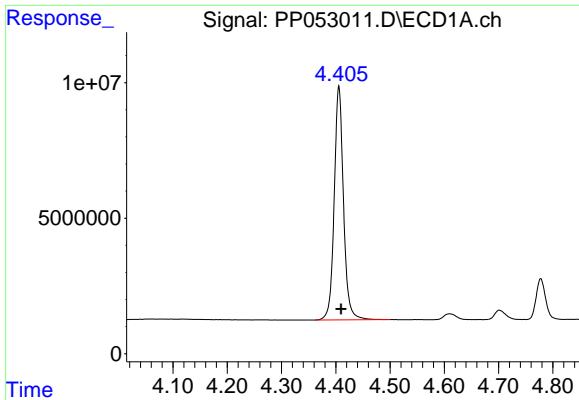
Data Path : Z:\pestpcbsrv\HPCHEM1\ECD_P\Data\PP110222\
 Data File : PP053011.D
 Signal(s) : Signal #1: ECD1A.ch Signal #2: ECD2B.ch
 Acq On : 02 Nov 2022 22:22
 Operator : YP\AJ
 Sample : AR1660CCC500
 Misc :
 ALS Vial : 3 Sample Multiplier: 1

Instrument :
 ECD_P
 ClientSampleId :
 AR1660CCC500

Integration File signal 1: autoint1.e
 Integration File signal 2: autoint2.e
 Quant Time: Nov 03 04:17:19 2022
 Quant Method : Z:\pestpcbsrv\HPCHEM1\ECD_P\methods\PP102622.M
 Quant Title : GC EXTRACTABLES
 QLast Update : Thu Oct 27 04:46:37 2022
 Response via : Initial Calibration
 Integrator: ChemStation

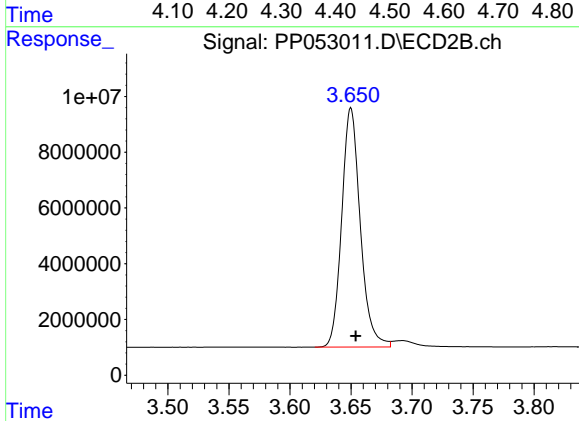
Volume Inj. : 2 µl
 Signal #1 Phase : ZB-MR1 Signal #2 Phase: ZB-MR2
 Signal #1 Info : 30Mx0.32mmx 0.50µ Signal #2 Info : 30M x 0.32mm x 0.25µm



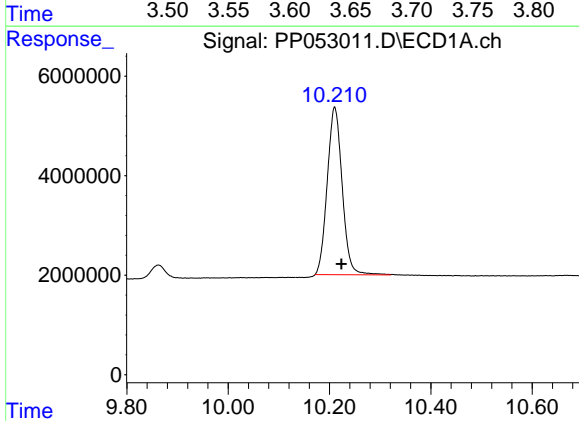


#1 Tetrachloro-m-xylene
 R.T.: 4.406 min
 Delta R.T.: -0.004 min
 Response: 102743858
 Conc: 46.50 ng/ml

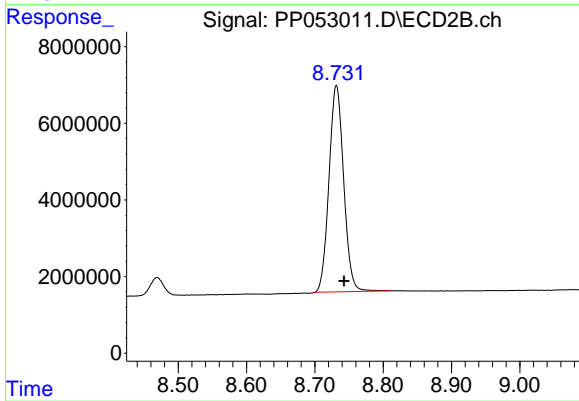
Instrument :
 ECD_P
 ClientSampleId :
 AR1660CCC500



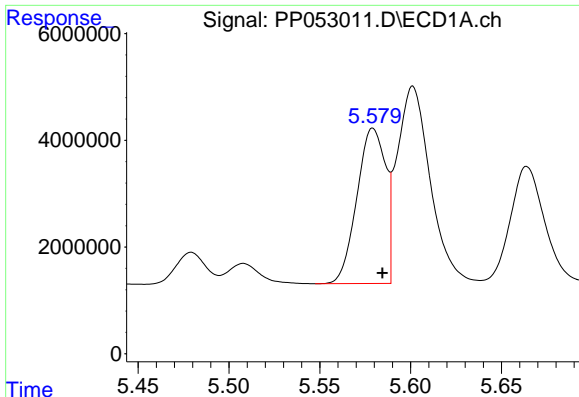
#1 Tetrachloro-m-xylene
 R.T.: 3.650 min
 Delta R.T.: -0.004 min
 Response: 90901294
 Conc: 48.37 ng/ml



#2 Decachlorobiphenyl
 R.T.: 10.210 min
 Delta R.T.: -0.014 min
 Response: 69072872
 Conc: 54.42 ng/ml



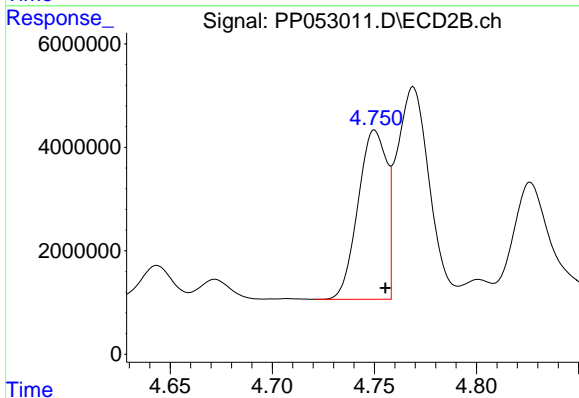
#2 Decachlorobiphenyl
 R.T.: 8.732 min
 Delta R.T.: -0.011 min
 Response: 80525588
 Conc: 48.01 ng/ml



#3 AR-1016-1

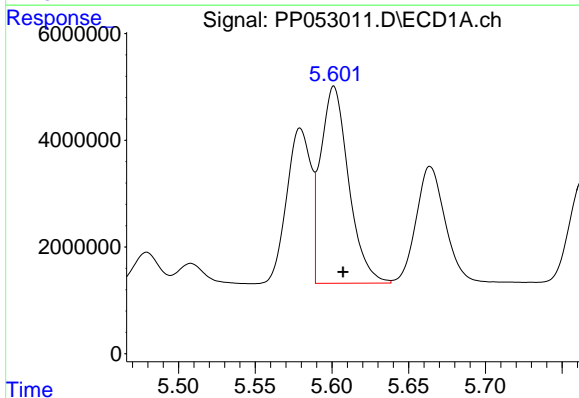
R.T.: 5.579 min
 Delta R.T.: -0.005 min
 Response: 31999194
 Conc: 477.29 ng/ml

Instrument :
 ECD_P
 ClientSampleId :
 AR1660CCC500



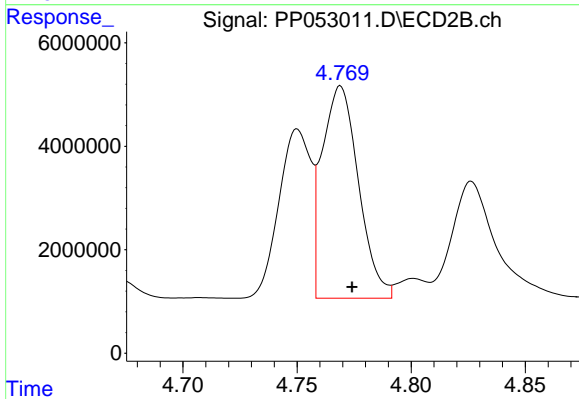
#3 AR-1016-1

R.T.: 4.750 min
 Delta R.T.: -0.005 min
 Response: 31947511
 Conc: 485.35 ng/ml



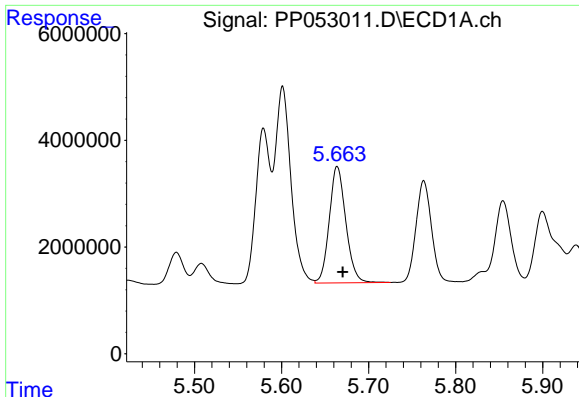
#4 AR-1016-2

R.T.: 5.601 min
 Delta R.T.: -0.006 min
 Response: 46892188
 Conc: 469.47 ng/ml



#4 AR-1016-2

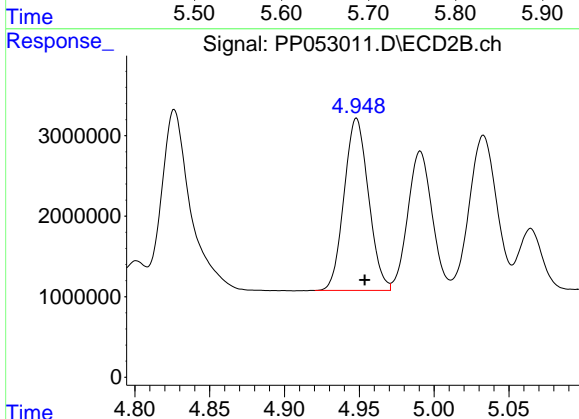
R.T.: 4.769 min
 Delta R.T.: -0.005 min
 Response: 45482646
 Conc: 495.43 ng/ml



#5 AR-1016-3

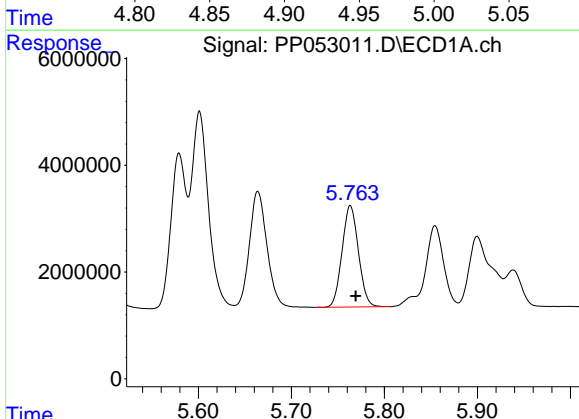
R.T.: 5.664 min
 Delta R.T.: -0.006 min
 Response: 28840575
 Conc: 473.88 ng/ml

Instrument :
 ECD_P
 ClientSampleId :
 AR1660CCC500



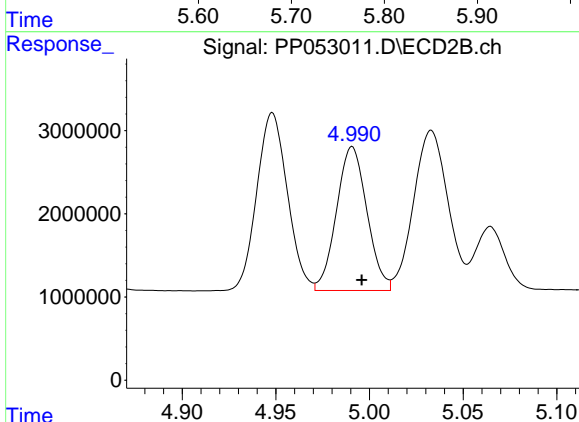
#5 AR-1016-3

R.T.: 4.948 min
 Delta R.T.: -0.006 min
 Response: 24240480
 Conc: 498.57 ng/ml



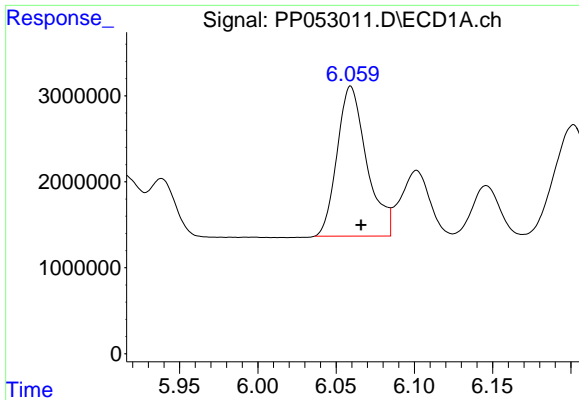
#6 AR-1016-4

R.T.: 5.763 min
 Delta R.T.: -0.006 min
 Response: 23273477
 Conc: 480.59 ng/ml



#6 AR-1016-4

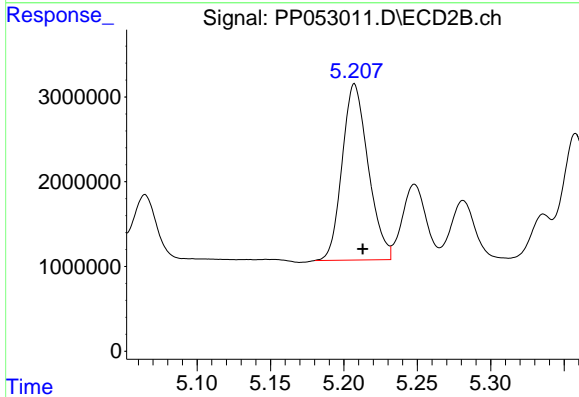
R.T.: 4.991 min
 Delta R.T.: -0.005 min
 Response: 19569321
 Conc: 502.30 ng/ml



#7 AR-1016-5

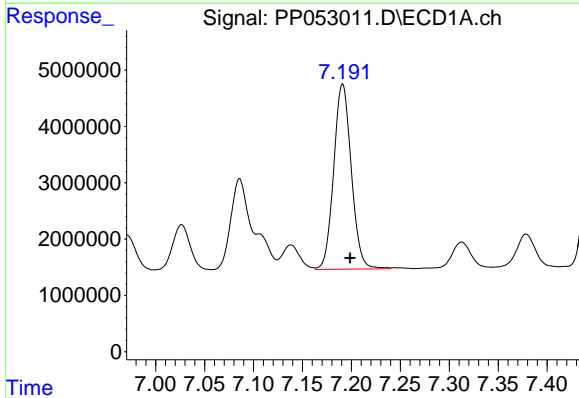
R.T.: 6.059 min
 Delta R.T.: -0.007 min
 Response: 22902235
 Conc: 475.50 ng/ml

Instrument :
 ECD_P
 ClientSampleId :
 AR1660CCC500



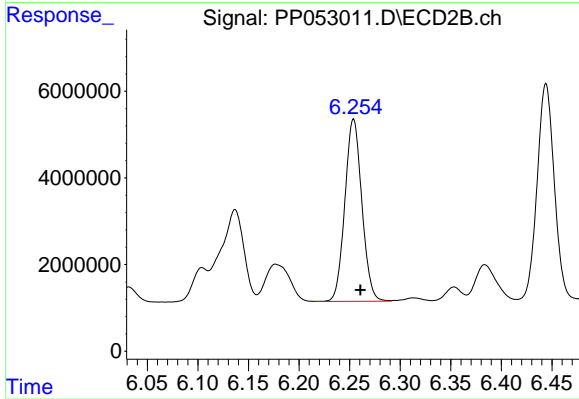
#7 AR-1016-5

R.T.: 5.207 min
 Delta R.T.: -0.006 min
 Response: 25681422
 Conc: 511.11 ng/ml



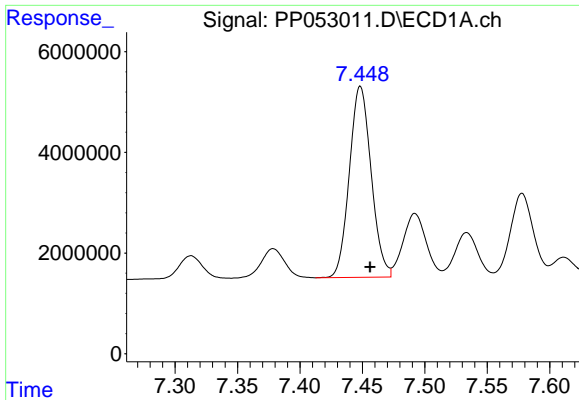
#31 AR-1260-1

R.T.: 7.191 min
 Delta R.T.: -0.008 min
 Response: 41226240
 Conc: 482.60 ng/ml



#31 AR-1260-1

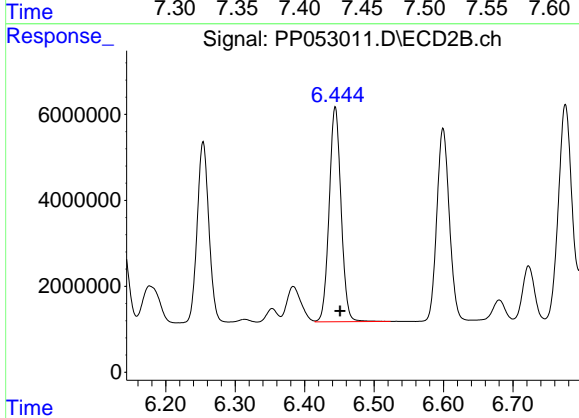
R.T.: 6.254 min
 Delta R.T.: -0.007 min
 Response: 49122332
 Conc: 482.96 ng/ml



#32 AR-1260-2

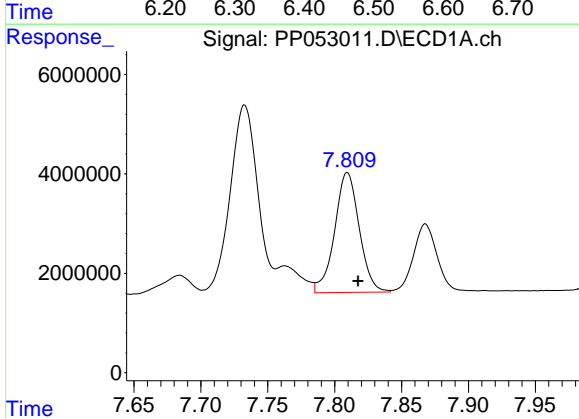
R.T.: 7.448 min
Delta R.T.: -0.008 min
Response: 46099484
Conc: 493.67 ng/ml

Instrument :
ECD_P
ClientSampleId :
AR1660CCC500



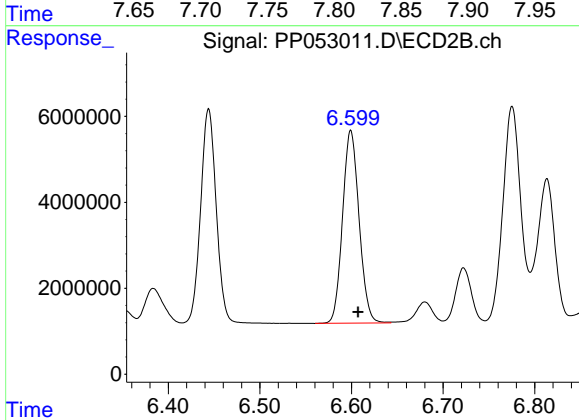
#32 AR-1260-2

R.T.: 6.444 min
Delta R.T.: -0.007 min
Response: 59506293
Conc: 489.31 ng/ml



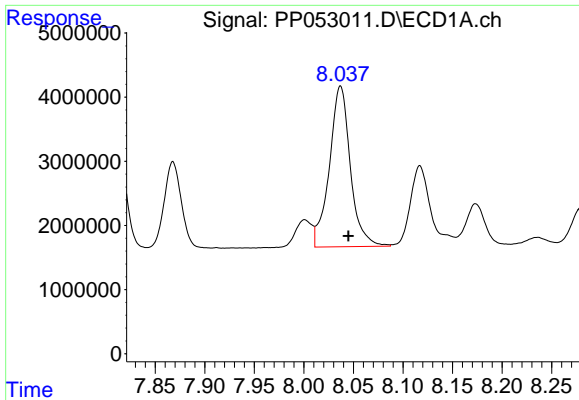
#33 AR-1260-3

R.T.: 7.809 min
Delta R.T.: -0.008 min
Response: 30860807
Conc: 488.42 ng/ml



#33 AR-1260-3

R.T.: 6.599 min
Delta R.T.: -0.008 min
Response: 56239569
Conc: 482.13 ng/ml

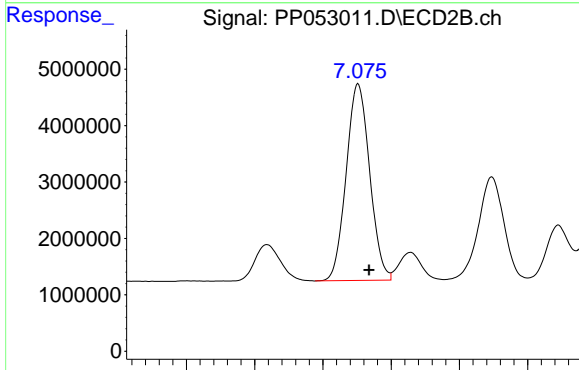


#34 AR-1260-4

R.T.: 8.037 min
 Delta R.T.: -0.008 min
 Response: 36893796
 Conc: 515.26 ng/ml

Instrument :
 ECD_P
 ClientSampleId :
 AR1660CCC500

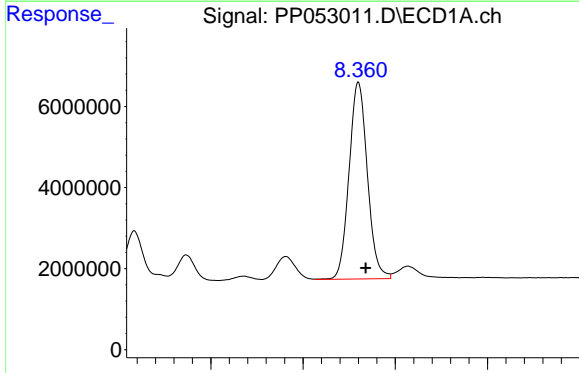
Time 7.85 7.90 7.95 8.00 8.05 8.10 8.15 8.20 8.25



#34 AR-1260-4

R.T.: 7.076 min
 Delta R.T.: -0.008 min
 Response: 41718724
 Conc: 463.33 ng/ml

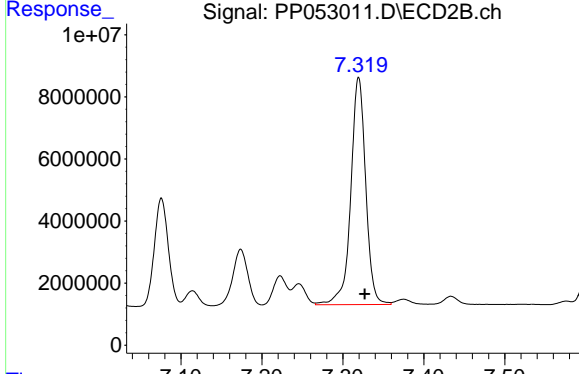
Time 6.95 7.00 7.05 7.10 7.15 7.20



#35 AR-1260-5

R.T.: 8.360 min
 Delta R.T.: -0.008 min
 Response: 67003487
 Conc: 527.15 ng/ml

Time 8.20 8.30 8.40 8.50



#35 AR-1260-5

R.T.: 7.319 min
 Delta R.T.: -0.008 min
 Response: 93777866
 Conc: 457.79 ng/ml

Time 7.10 7.20 7.30 7.40 7.50