

Data Path : Z:\pestpcbsrv\HPCHEM1\ECD\_P\Data\PP110420\  
 Data File : PP031072.D  
 Signal(s) : Signal #1: ECD1A.CH Signal #2: ECD2B.CH  
 Acq On : 03 Nov 2020 16:06  
 Operator : DD\AJ  
 Sample : AR1660ICC1000  
 Misc :  
 ALS Vial : 3 Sample Multiplier: 1

Instrument :  
 ECD\_P  
 ClientSampleId :  
 AR1660ICC1000

Integration File signal 1: autoint1.e  
 Integration File signal 2: autoint2.e  
 Quant Time: Nov 04 07:12:48 2020  
 Quant Method : Z:\pestpcbsrv\HPCHEM1\ECD\_P\methods\PP110420.M  
 Quant Title : GC EXTRACTABLES  
 QLast Update : Wed Nov 04 07:12:11 2020  
 Response via : Initial Calibration  
 Integrator: ChemStation 6890 Scale Mode: Small noise peaks clipped

Volume Inj. : 2 µl  
 Signal #1 Phase : ZB-MR1 Signal #2 Phase: ZB-MR2  
 Signal #1 Info : 30Mx0.32mmx 0.50µ Signal #2 Info : 30M x 0.32mm x 0.25µm

Compound	RT#1	RT#2	Resp#1	Resp#2	ng/ml	ng/ml
-----						
System Monitoring Compounds						
1) SA Tetrachlo...	4.801	4.076	6361318	6460074	96.862	98.045
2) SA Decachlor...	10.688	9.404	3674687	4018977	93.228	95.716
Target Compounds						
3) L1 AR-1016-1	6.107	5.339	1717956	1713808	916.662	951.868
4) L1 AR-1016-2	6.130	5.360	2548958	2460046	922.683	927.860
5) L1 AR-1016-3	6.196	5.552	1545185	1198996	906.184	933.949
6) L1 AR-1016-4	6.302	5.604	1296866	850462	920.209	913.938
7) L1 AR-1016-5	6.617	5.833	1163023	1223905	906.795	920.904
31) L7 AR-1260-1	7.789	6.931	1669609	1792434	921.011	913.144
32) L7 AR-1260-2	8.054	7.127	1942688	2116243	928.929	939.435
33) L7 AR-1260-3	8.419	7.283	1518451	2041865	929.227	920.081
34) L7 AR-1260-4	8.648	7.767	1720535	1673992	882.454	920.989
35) L7 AR-1260-5	8.962	8.013	3485691	4286422	942.209	949.568
-----						

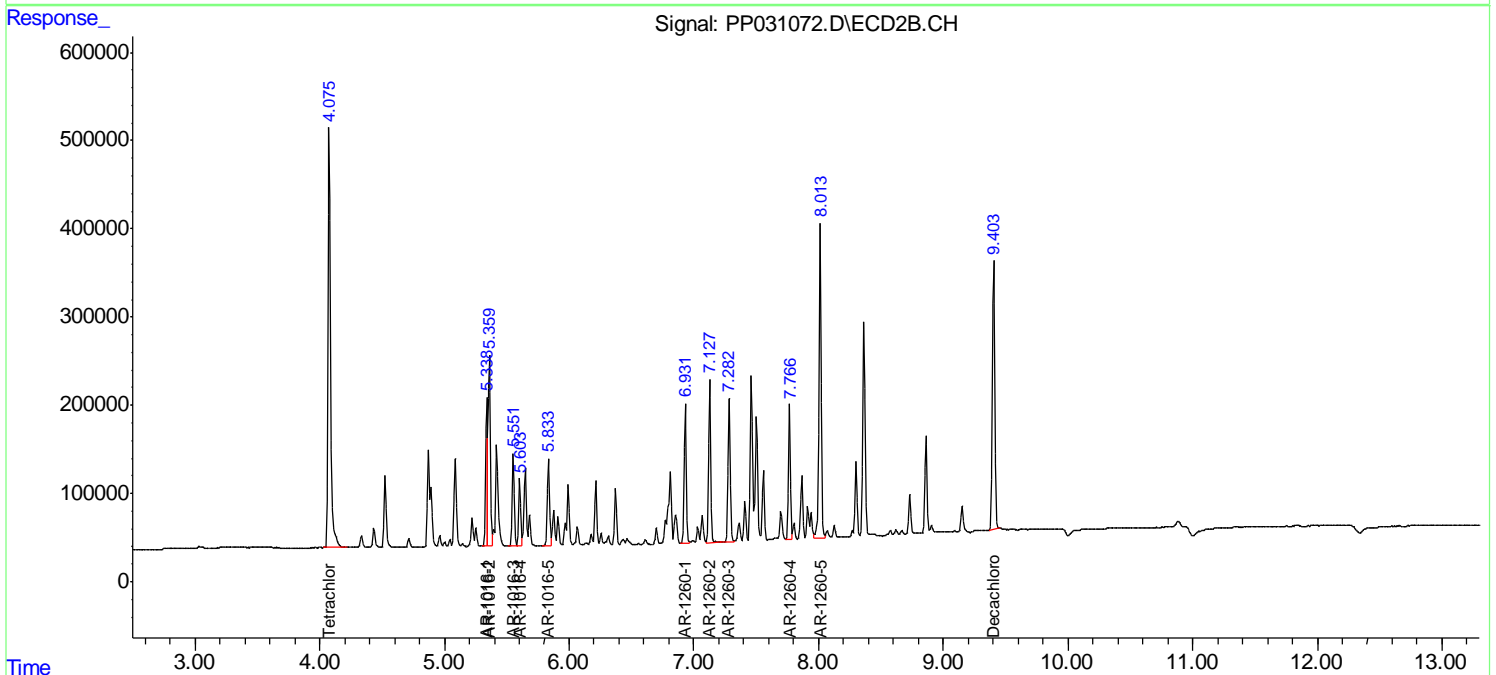
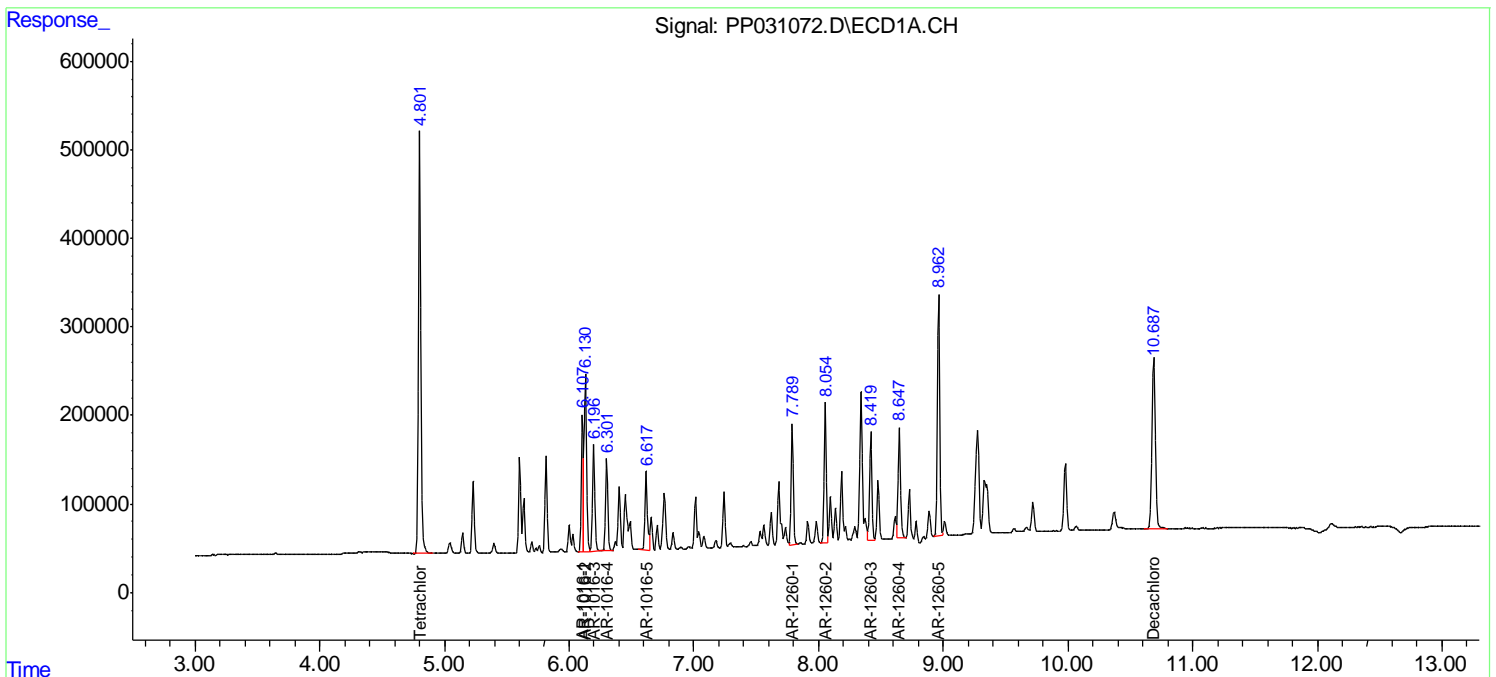
(f)=RT Delta > 1/2 Window (#)=Amounts differ by > 25% (m)=manual int.

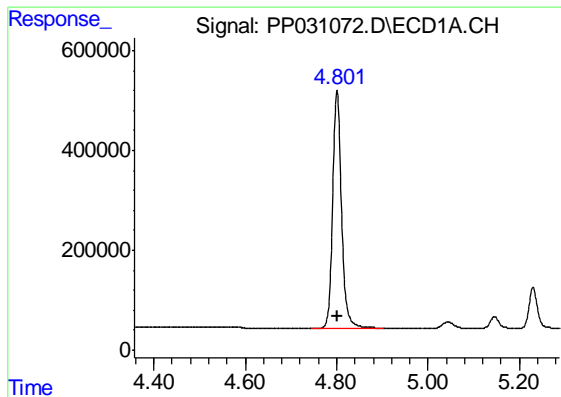
Data Path : Z:\pestpcbsrv\HPCHEM1\ECD\_P\Data\PP110420\  
 Data File : PP031072.D  
 Signal(s) : Signal #1: ECD1A.CH Signal #2: ECD2B.CH  
 Acq On : 03 Nov 2020 16:06  
 Operator : DD\AJ  
 Sample : AR1660ICC1000  
 Misc :  
 ALS Vial : 3 Sample Multiplier: 1

Instrument :  
 ECD\_P  
 Client Sampled :  
 AR1660ICC1000

Integration File signal 1: autoint1.e  
 Integration File signal 2: autoint2.e  
 Quant Time: Nov 04 07:12:48 2020  
 Quant Method : Z:\pestpcbsrv\HPCHEM1\ECD\_P\methods\PP110420.M  
 Quant Title : GC EXTRACTABLES  
 QLast Update : Wed Nov 04 07:12:11 2020  
 Response via : Initial Calibration  
 Integrator: ChemStation 6890 Scale Mode: Small noise peaks clipped

Volume Inj. : 2 µl  
 Signal #1 Phase : ZB-MR1 Signal #2 Phase: ZB-MR2  
 Signal #1 Info : 30Mx0.32mmx 0.50µ Signal #2 Info : 30M x 0.32mm x 0.25µm

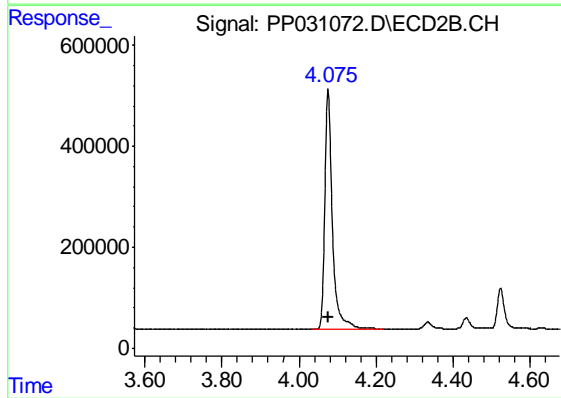




#1 Tetrachloro-m-xylene

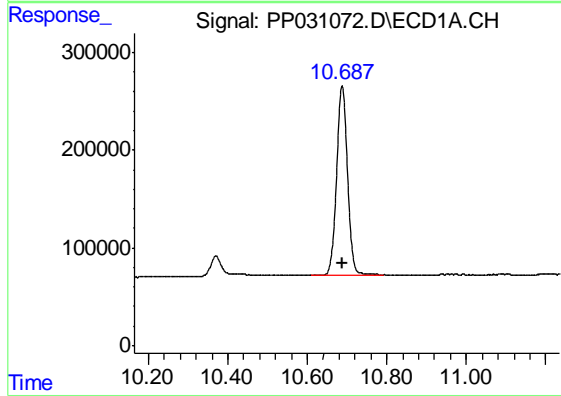
R.T.: 4.801 min  
Delta R.T.: 0.000 min  
Response: 6361318  
Conc: 96.86 ng/ml

Instrument :  
ECD\_P  
ClientSampleId :  
AR1660ICC1000



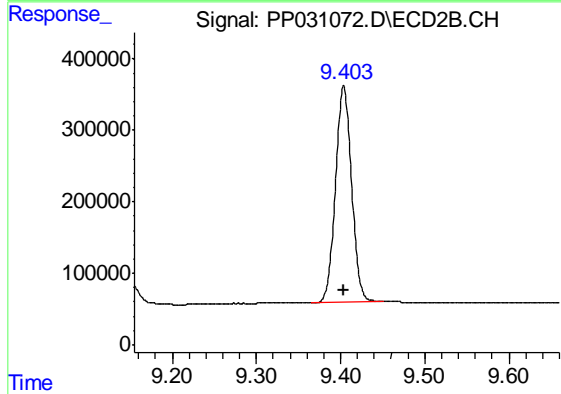
#1 Tetrachloro-m-xylene

R.T.: 4.076 min  
Delta R.T.: 0.000 min  
Response: 6460074  
Conc: 98.05 ng/ml



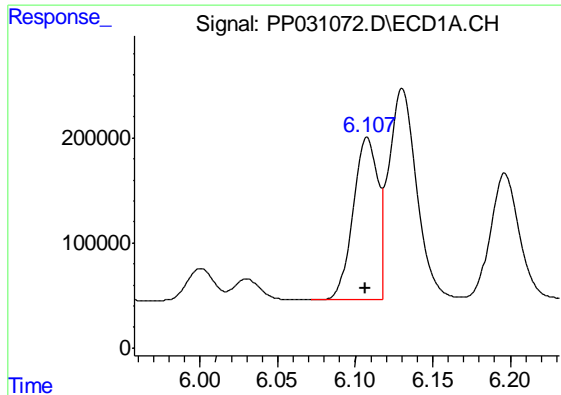
#2 Decachlorobiphenyl

R.T.: 10.688 min  
Delta R.T.: 0.000 min  
Response: 3674687  
Conc: 93.23 ng/ml



#2 Decachlorobiphenyl

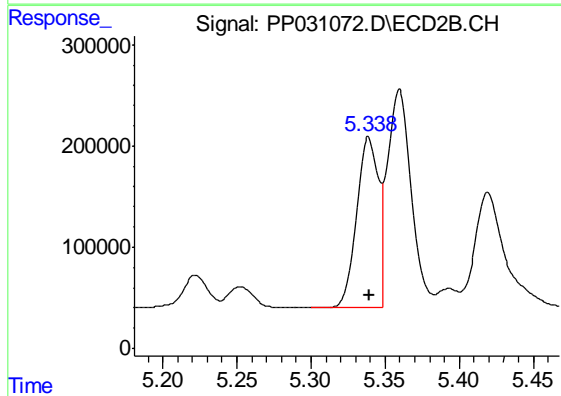
R.T.: 9.404 min  
Delta R.T.: 0.000 min  
Response: 4018977  
Conc: 95.72 ng/ml



#3 AR-1016-1

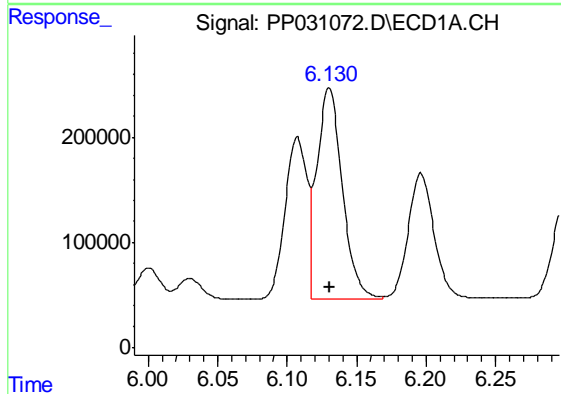
R.T.: 6.107 min  
 Delta R.T.: 0.000 min  
 Response: 1717956  
 Conc: 916.66 ng/ml

Instrument :  
 ECD\_P  
 ClientSampleId :  
 AR1660ICC1000



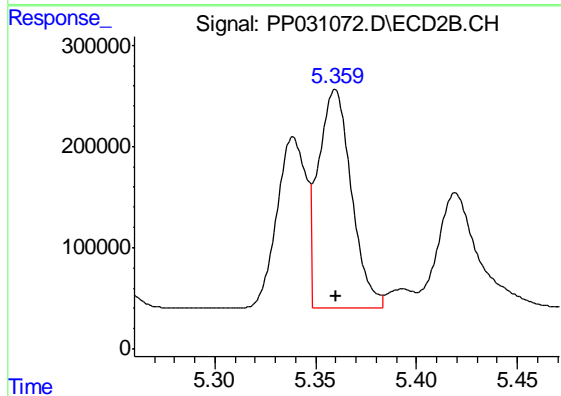
#3 AR-1016-1

R.T.: 5.339 min  
 Delta R.T.: 0.000 min  
 Response: 1713808  
 Conc: 951.87 ng/ml



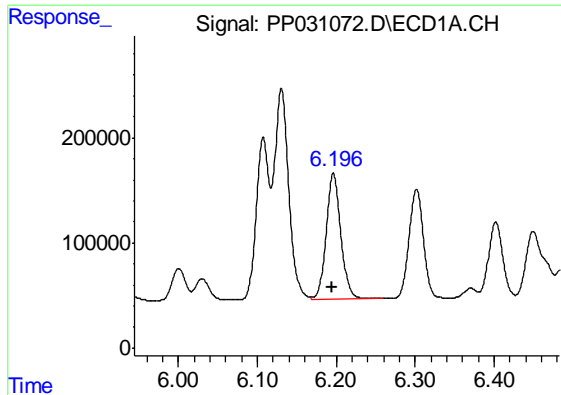
#4 AR-1016-2

R.T.: 6.130 min  
 Delta R.T.: 0.000 min  
 Response: 2548958  
 Conc: 922.68 ng/ml



#4 AR-1016-2

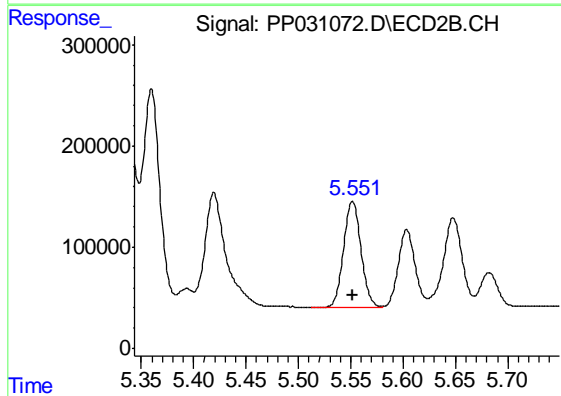
R.T.: 5.360 min  
 Delta R.T.: 0.000 min  
 Response: 2460046  
 Conc: 927.86 ng/ml



#5 AR-1016-3

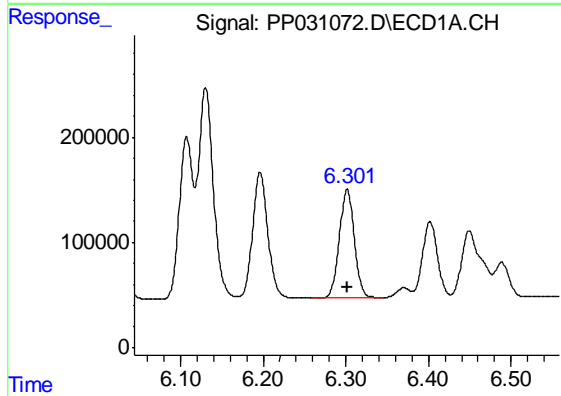
R.T.: 6.196 min  
 Delta R.T.: 0.000 min  
 Response: 1545185  
 Conc: 906.18 ng/ml

Instrument :  
 ECD\_P  
 ClientSampleId :  
 AR1660ICC1000



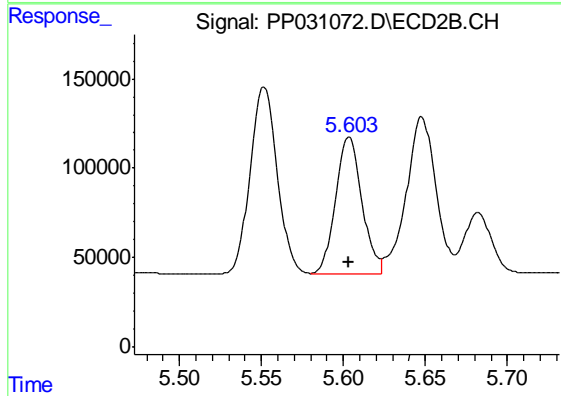
#5 AR-1016-3

R.T.: 5.552 min  
 Delta R.T.: 0.000 min  
 Response: 1198996  
 Conc: 933.95 ng/ml



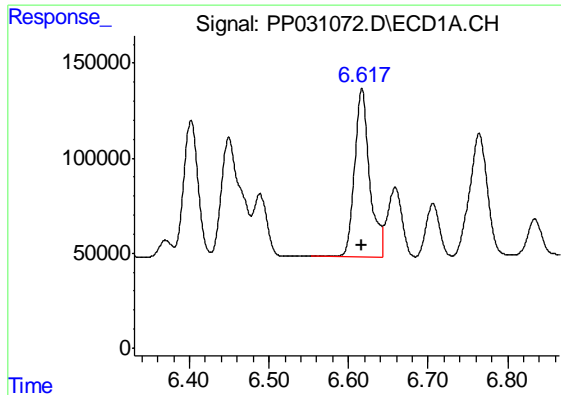
#6 AR-1016-4

R.T.: 6.302 min  
 Delta R.T.: 0.000 min  
 Response: 1296866  
 Conc: 920.21 ng/ml



#6 AR-1016-4

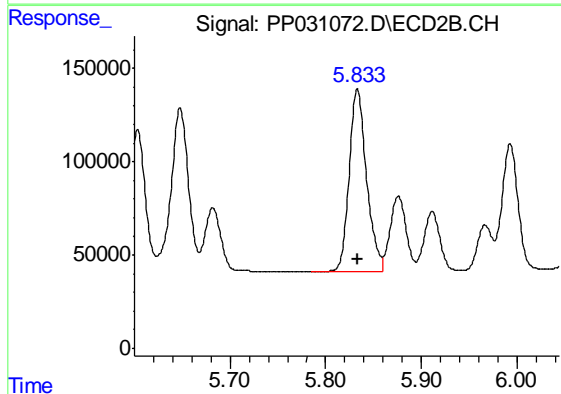
R.T.: 5.604 min  
 Delta R.T.: 0.000 min  
 Response: 850462  
 Conc: 913.94 ng/ml



#7 AR-1016-5

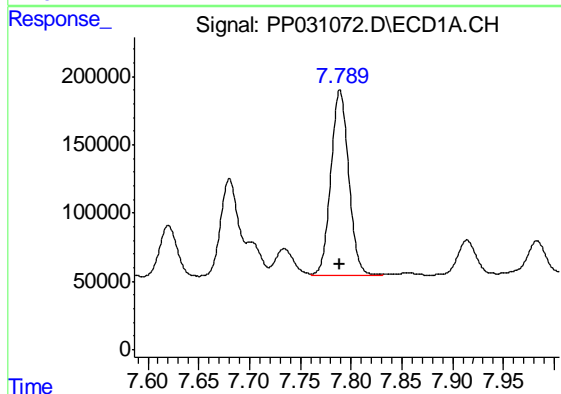
R.T.: 6.617 min  
Delta R.T.: 0.000 min  
Response: 1163023  
Conc: 906.80 ng/ml

Instrument :  
ECD\_P  
ClientSampleId :  
AR1660ICC1000



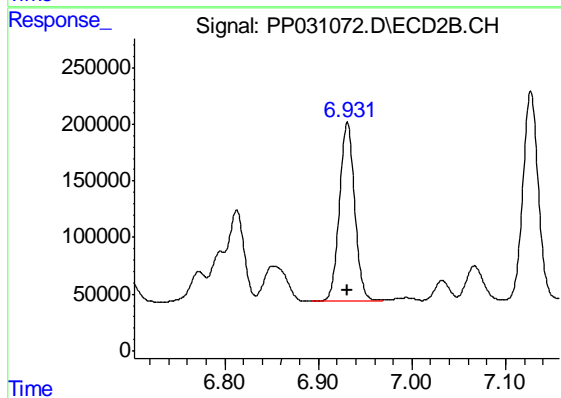
#7 AR-1016-5

R.T.: 5.833 min  
Delta R.T.: 0.000 min  
Response: 1223905  
Conc: 920.90 ng/ml



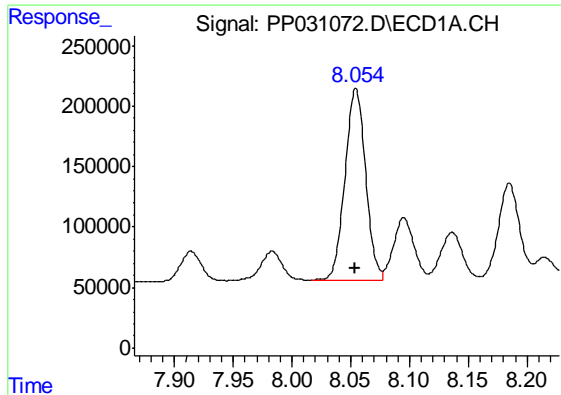
#31 AR-1260-1

R.T.: 7.789 min  
Delta R.T.: 0.000 min  
Response: 1669609  
Conc: 921.01 ng/ml



#31 AR-1260-1

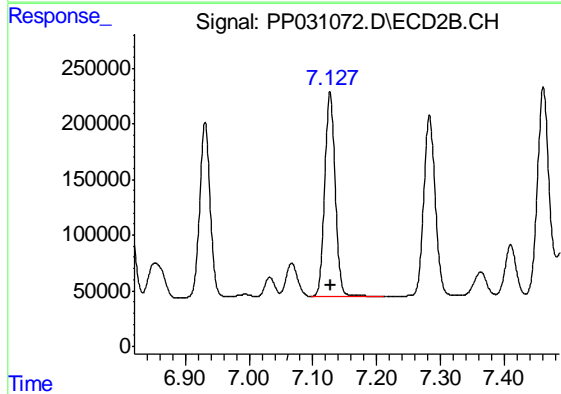
R.T.: 6.931 min  
Delta R.T.: 0.000 min  
Response: 1792434  
Conc: 913.14 ng/ml



#32 AR-1260-2

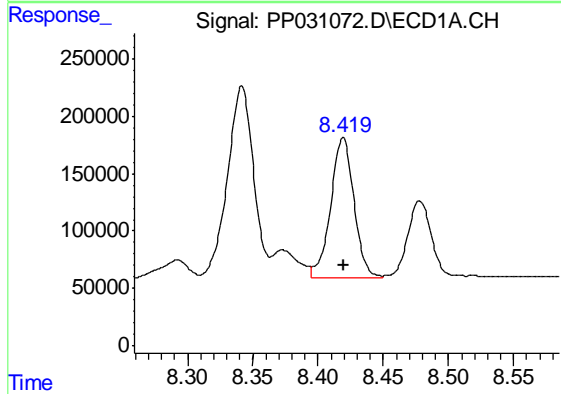
R.T.: 8.054 min  
 Delta R.T.: 0.000 min  
 Response: 1942688  
 Conc: 928.93 ng/ml

Instrument :  
 ECD\_P  
 ClientSampleId :  
 AR1660ICC1000



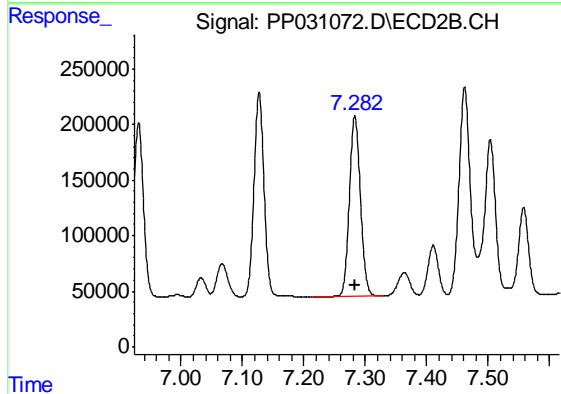
#32 AR-1260-2

R.T.: 7.127 min  
 Delta R.T.: 0.000 min  
 Response: 2116243  
 Conc: 939.43 ng/ml



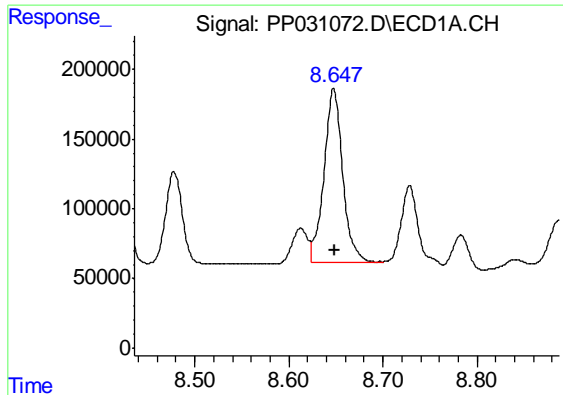
#33 AR-1260-3

R.T.: 8.419 min  
 Delta R.T.: 0.000 min  
 Response: 1518451  
 Conc: 929.23 ng/ml



#33 AR-1260-3

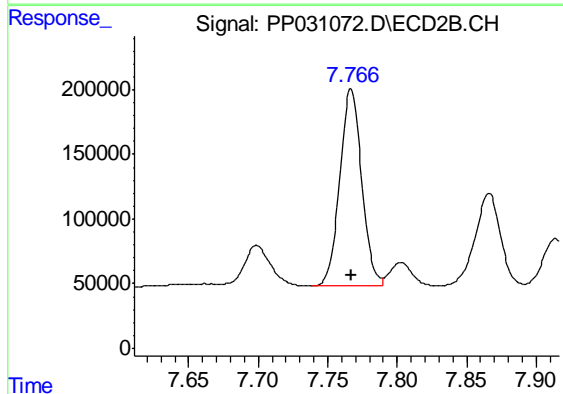
R.T.: 7.283 min  
 Delta R.T.: 0.000 min  
 Response: 2041865  
 Conc: 920.08 ng/ml



#34 AR-1260-4

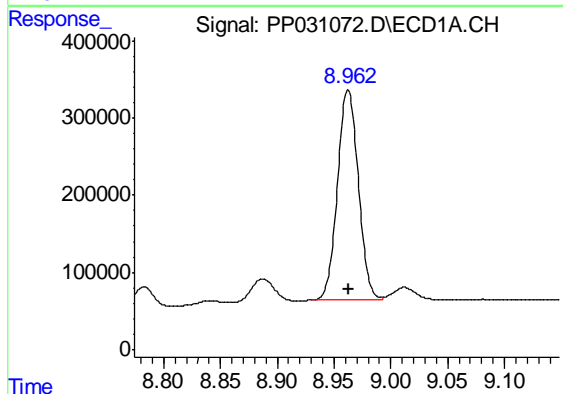
R.T.: 8.648 min  
 Delta R.T.: 0.000 min  
 Response: 1720535  
 Conc: 882.45 ng/ml

Instrument :  
 ECD\_P  
 ClientSampleId :  
 AR1660ICC1000



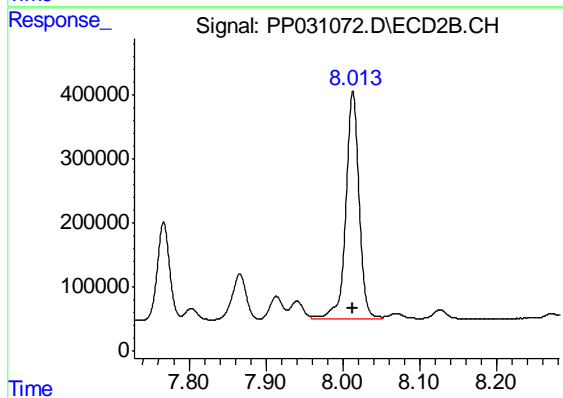
#34 AR-1260-4

R.T.: 7.767 min  
 Delta R.T.: 0.000 min  
 Response: 1673992  
 Conc: 920.99 ng/ml



#35 AR-1260-5

R.T.: 8.962 min  
 Delta R.T.: 0.000 min  
 Response: 3485691  
 Conc: 942.21 ng/ml



#35 AR-1260-5

R.T.: 8.013 min  
 Delta R.T.: 0.000 min  
 Response: 4286422  
 Conc: 949.57 ng/ml