

Data Path : Z:\pestpcbsrv\HPCHEM1\ECD_P\Data\PP110420\
 Data File : PP031097.D
 Signal(s) : Signal #1: ECD1A.CH Signal #2: ECD2B.CH
 Acq On : 04 Nov 2020 12:35
 Operator : DD\AJ
 Sample : AR1660CCC500
 Misc :
 ALS Vial : 3 Sample Multiplier: 1

Instrument :
 ECD_P
 ClientSampled :
 AR1660CCC500

Integration File signal 1: autoint1.e
 Integration File signal 2: autoint2.e
 Quant Time: Nov 05 05:01:21 2020
 Quant Method : Z:\pestpcbsrv\HPCHEM1\ECD_P\methods\PP110420.M
 Quant Title : GC EXTRACTABLES
 QLast Update : Wed Nov 04 08:24:38 2020
 Response via : Initial Calibration
 Integrator: ChemStation 6890 Scale Mode: Small noise peaks clipped

Volume Inj. : 2 µl
 Signal #1 Phase : ZB-MR1 Signal #2 Phase: ZB-MR2
 Signal #1 Info : 30Mx0.32mmx 0.50µ Signal #2 Info : 30M x 0.32mm x 0.25µm

Compound	RT#1	RT#2	Resp#1	Resp#2	ng/ml	ng/ml
System Monitoring Compounds						
1) SA Tetrachlo...	4.800	4.075	3272730	3318575	48.999	49.927
2) SA Decachlor...	10.682	9.399	2037636	2294685	50.962	54.955
Target Compounds						
3) L1 AR-1016-1	6.105	5.336	944909	924347	485.295	498.227
4) L1 AR-1016-2	6.129	5.357	1394400	1355841	488.450	498.802
5) L1 AR-1016-3	6.195	5.549	868325	733602	498.534	579.193
6) L1 AR-1016-4	6.299	5.600	721042	532582	499.003	577.484
7) L1 AR-1016-5	6.614	5.830	659163	690572	528.775	526.137
8) L2 AR-1221-1	5.042	4.333	102897	95624	170.398	169.785
9) L2 AR-1221-2	5.144	4.433	156807	144259	349.106	347.713
10) L2 AR-1221-3	5.229	4.522	560791	544352	415.503	415.088
11) L3 AR-1232-1	5.229	4.522	560791	544352	458.532	454.437
12) L3 AR-1232-2	5.813	5.357	737082	1355841	1213.837	1275.849
13) L3 AR-1232-3	6.129	5.549	1394400	733602	1248.207	1430.868
14) L3 AR-1232-4	6.299	5.645	721042	656603	1270.448	1503.374
15) L3 AR-1232-5	6.400	5.830	447281	690572	1290.817	1430.069
16) L4 AR-1242-1	6.105	5.336	944909	924347	703.324	718.257
17) L4 AR-1242-2	6.129	5.357	1394400	1355841	713.978	726.077
18) L4 AR-1242-3	6.195	5.549	868325	733602	711.993	781.378
19) L4 AR-1242-4	6.299	5.645	721042	656603	711.708	757.151
20) L4 AR-1242-5	7.079	6.210	103959	488275	108.941	490.478 #
21) L5 AR-1248-1	6.105	5.336	944909	924347	979.890	998.967
22) L5 AR-1248-2	6.400	5.600	447281	532582	386.725	483.241
23) L5 AR-1248-3	6.614	5.645	659163	656603	463.289	542.493
24) L5 AR-1248-4	7.040	5.830	123085	690572	80.759	467.922 #
25) L5 AR-1248-5	7.079	6.253	103959	95841	68.525	75.887
26) L6 AR-1254-1	7.011	6.210	424236	488275	302.163	248.272
27) L6 AR-1254-2	7.239	6.369	451314	431463	216.513	262.571
28) L6 AR-1254-3	7.618	6.809f	316966	821194	137.331	299.889 #
29) L6 AR-1254-4	7.912	7.030	192130	110721	117.354	68.617 #
30) L6 AR-1254-5	8.339	7.458	1265603	1443032	749.710	659.073
31) L7 AR-1260-1	7.787	6.927	980914	1050591	534.023	524.202
32) L7 AR-1260-2	8.052	7.123	1121372	1257789	520.523	537.100
33) L7 AR-1260-3	8.417	7.279	794464	1226010	482.643	539.263
34) L7 AR-1260-4	8.644	7.762	777596	1031220	418.208	565.220 #
35) L7 AR-1260-5	8.960	8.010	2083300	2566574	552.534	570.302
36) L8 AR-1262-1	8.417	7.500	794464	1144610	395.411	492.787
37) L8 AR-1262-2	8.960	8.010	2083300	2566574	573.186	619.084
38) L8 AR-1262-3	9.274	8.297	1386230	586725	536.245	346.063 #
39) L8 AR-1262-4	9.346	8.360	451105	1934345	219.107	609.136 #
40) L8 AR-1262-5	9.976	8.858	733618	751273	517.902	467.432
41) L9 AR-1268-1	9.274	8.297	1386230	586725	317.346	119.848 #

Data Path : Z:\pestpcbsrv\HPCHEM1\ECD_P\Data\PP110420\
 Data File : PP031097.D
 Signal(s) : Signal #1: ECD1A.CH Signal #2: ECD2B.CH
 Acq On : 04 Nov 2020 12:35
 Operator : DD\AJ
 Sample : AR1660CCC500
 Misc :
 ALS Vial : 3 Sample Multiplier: 1

Instrument :
 ECD_P
 ClientSampleId :
 AR1660CCC500

Integration File signal 1: autoint1.e
 Integration File signal 2: autoint2.e
 Quant Time: Nov 05 05:01:21 2020
 Quant Method : Z:\pestpcbsrv\HPCHEM1\ECD_P\methods\PP110420.M
 Quant Title : GC EXTRACTABLES
 QLast Update : Wed Nov 04 08:24:38 2020
 Response via : Initial Calibration
 Integrator: ChemStation 6890 Scale Mode: Small noise peaks clipped

Volume Inj. : 2 µl
 Signal #1 Phase : ZB-MR1 Signal #2 Phase: ZB-MR2
 Signal #1 Info : 30Mx0.32mmx 0.50µ Signal #2 Info : 30M x 0.32mm x 0.25µm

	Compound	RT#1	RT#2	Resp#1	Resp#2	ng/ml	ng/ml
42)	L9 AR-1268-2	9.346	8.360	451105	1934345	104.904	406.722 #
43)	L9 AR-1268-3	9.565	8.571	68445	32987	18.925	8.244 #
44)	L9 AR-1268-4	9.976	8.858	733618	751273	463.180	443.415
45)	L9 AR-1268-5	10.365	9.147	248036	219847	20.740	16.393

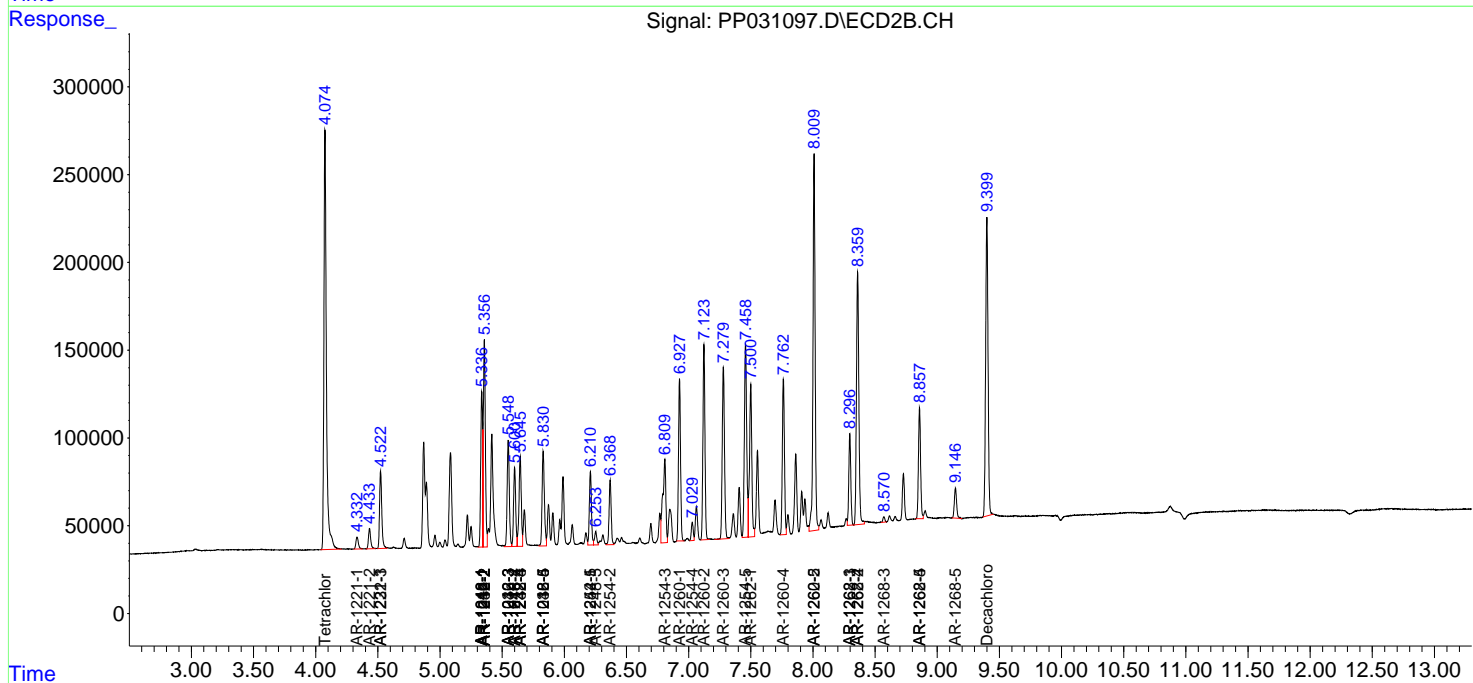
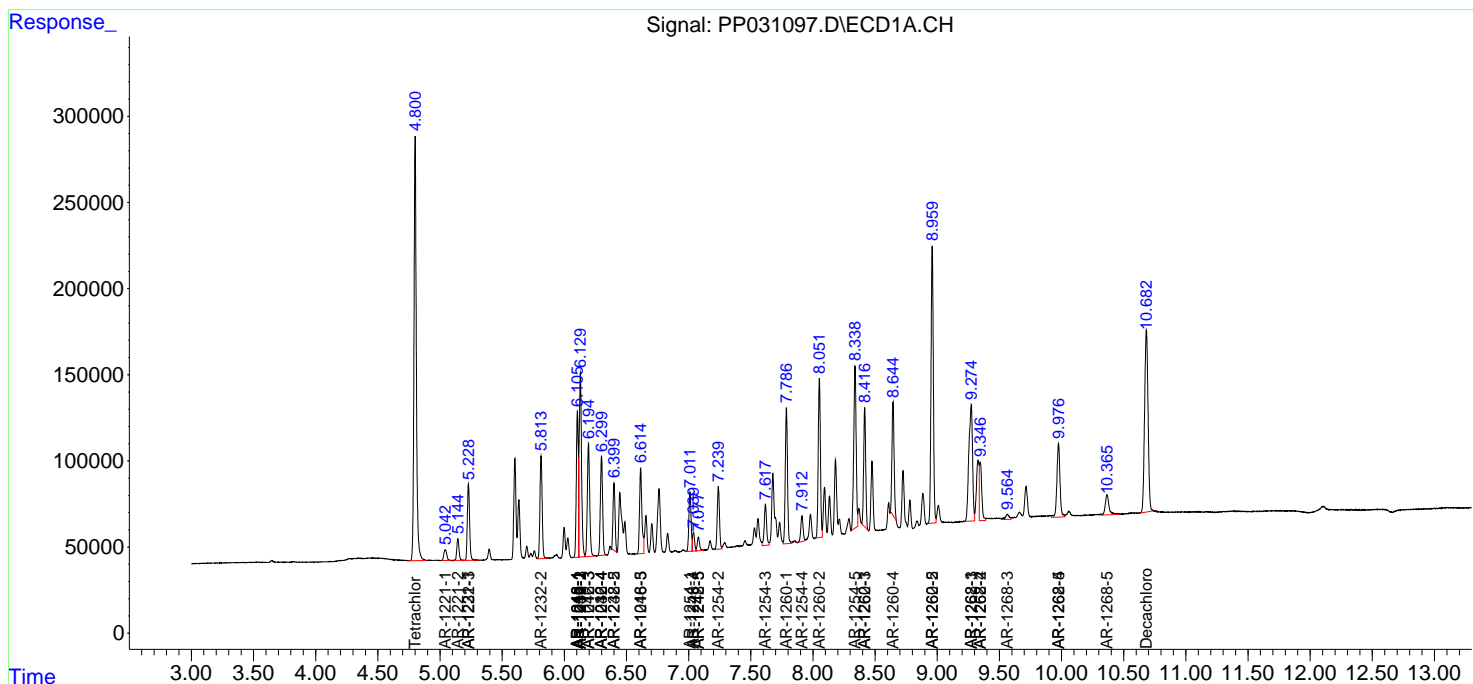
(f)=RT Delta > 1/2 Window (#)=Amounts differ by > 25% (m)=manual int.

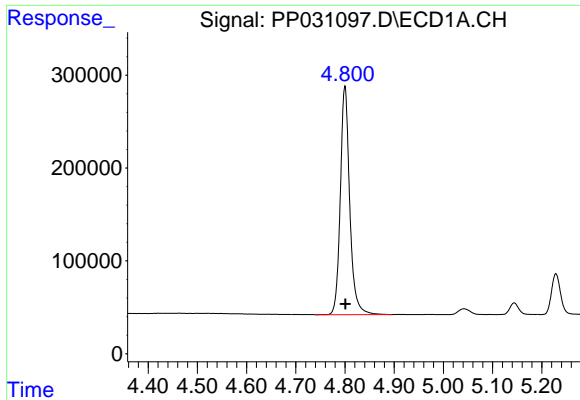
Data Path : Z:\pestpcbsrv\HPCHEM1\ECD_P\Data\PP110420\
 Data File : PP031097.D
 Signal(s) : Signal #1: ECD1A.CH Signal #2: ECD2B.CH
 Acq On : 04 Nov 2020 12:35
 Operator : DD\AJ
 Sample : AR1660CCC500
 Misc :
 ALS Vial : 3 Sample Multiplier: 1

Instrument :
 ECD_P
 ClientSampled :
 AR1660CCC500

Integration File signal 1: autoint1.e
 Integration File signal 2: autoint2.e
 Quant Time: Nov 05 05:01:21 2020
 Quant Method : Z:\pestpcbsrv\HPCHEM1\ECD_P\methods\PP110420.M
 Quant Title : GC EXTRACTABLES
 QLast Update : Wed Nov 04 08:24:38 2020
 Response via : Initial Calibration
 Integrator: ChemStation 6890 Scale Mode: Small noise peaks clipped

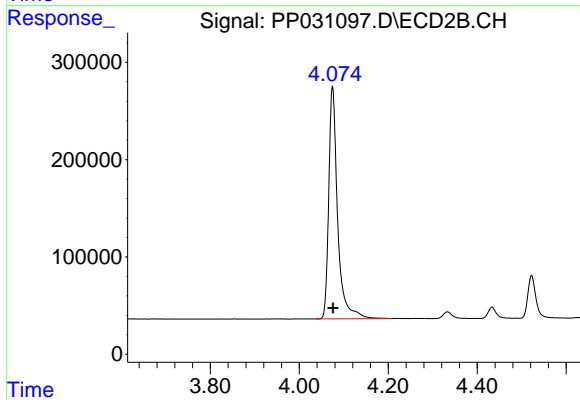
Volume Inj. : 2 µl
 Signal #1 Phase : ZB-MR1 Signal #2 Phase: ZB-MR2
 Signal #1 Info : 30Mx0.32mmx 0.50µ Signal #2 Info : 30M x 0.32mm x 0.25µm



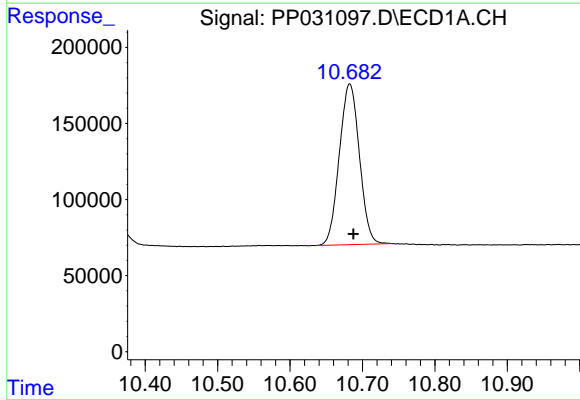


#1 Tetrachloro-m-xylene
 R.T.: 4.800 min
 Delta R.T.: -0.001 min
 Response: 3272730
 Conc: 49.00 ng/ml

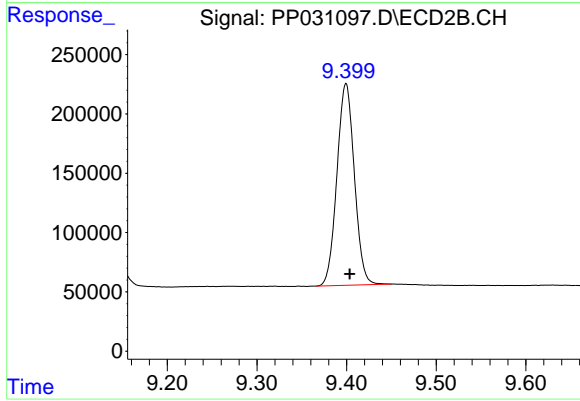
Instrument :
 ECD_P
 ClientSampleId :
 AR1660CCC500



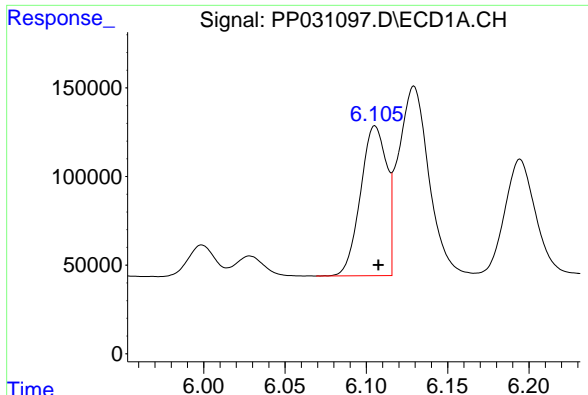
#1 Tetrachloro-m-xylene
 R.T.: 4.075 min
 Delta R.T.: 0.000 min
 Response: 3318575
 Conc: 49.93 ng/ml



#2 Decachlorobiphenyl
 R.T.: 10.682 min
 Delta R.T.: -0.005 min
 Response: 2037636
 Conc: 50.96 ng/ml



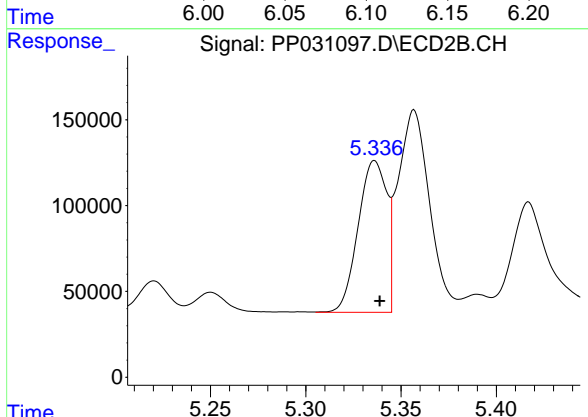
#2 Decachlorobiphenyl
 R.T.: 9.399 min
 Delta R.T.: -0.004 min
 Response: 2294685
 Conc: 54.95 ng/ml



#3 AR-1016-1

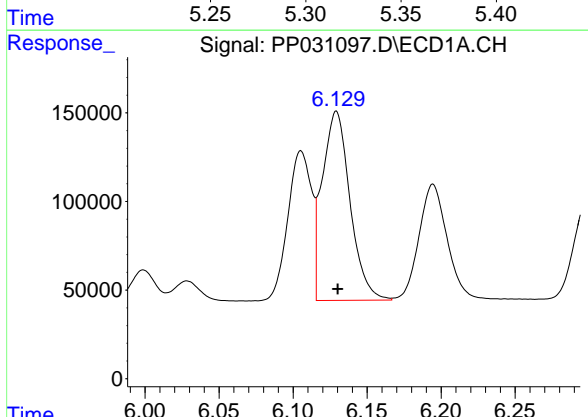
R.T.: 6.105 min
 Delta R.T.: -0.002 min
 Response: 944909
 Conc: 485.30 ng/ml

Instrument :
 ECD_P
 ClientSampleId :
 AR1660CCC500



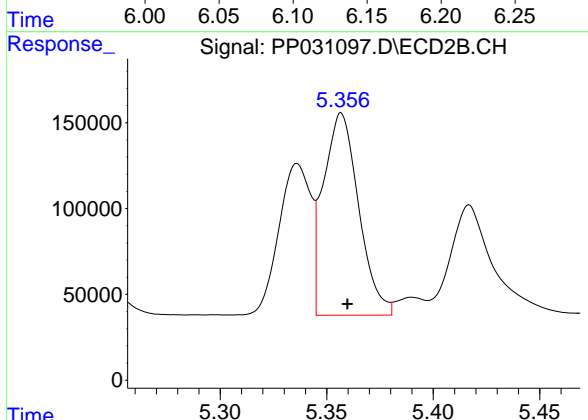
#3 AR-1016-1

R.T.: 5.336 min
 Delta R.T.: -0.003 min
 Response: 924347
 Conc: 498.23 ng/ml



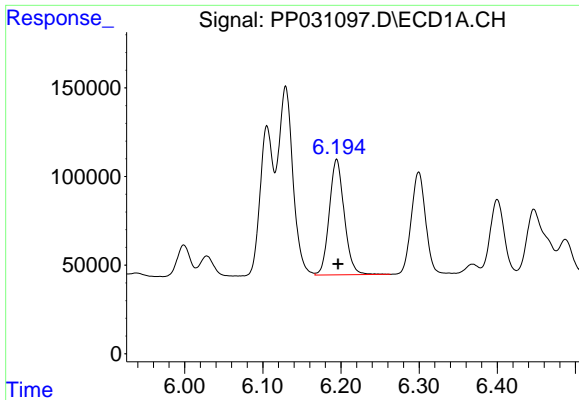
#4 AR-1016-2

R.T.: 6.129 min
 Delta R.T.: -0.001 min
 Response: 1394400
 Conc: 488.45 ng/ml



#4 AR-1016-2

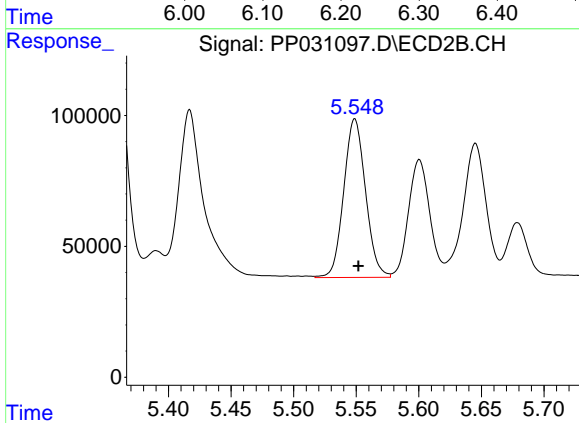
R.T.: 5.357 min
 Delta R.T.: -0.003 min
 Response: 1355841
 Conc: 498.80 ng/ml



#5 AR-1016-3

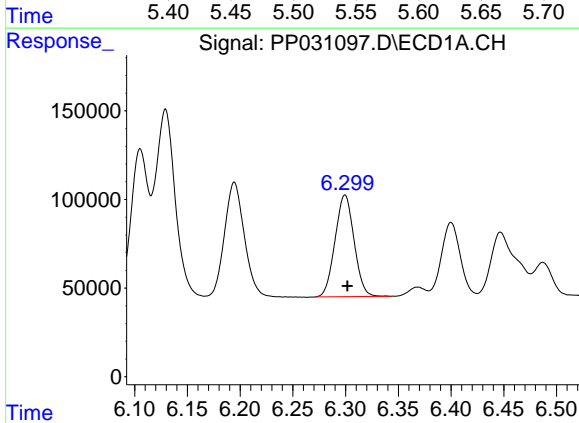
R.T.: 6.195 min
Delta R.T.: -0.002 min
Response: 868325
Conc: 498.53 ng/ml

Instrument :
ECD_P
ClientSampleId :
AR1660CCC500



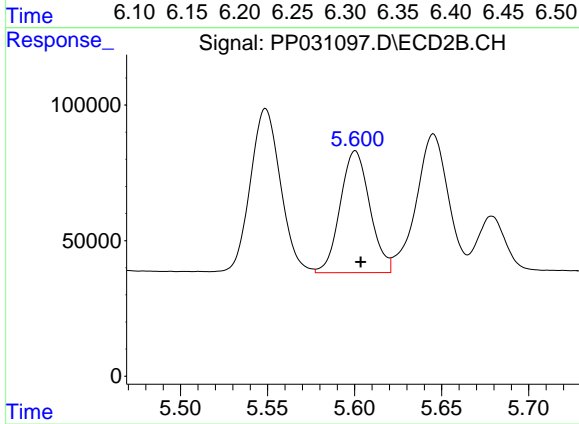
#5 AR-1016-3

R.T.: 5.549 min
Delta R.T.: -0.003 min
Response: 733602
Conc: 579.19 ng/ml



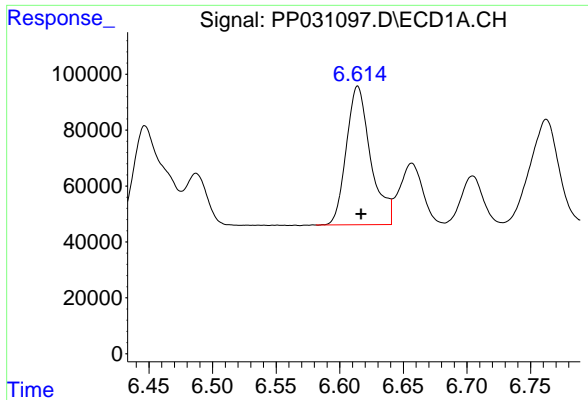
#6 AR-1016-4

R.T.: 6.299 min
Delta R.T.: -0.002 min
Response: 721042
Conc: 499.00 ng/ml



#6 AR-1016-4

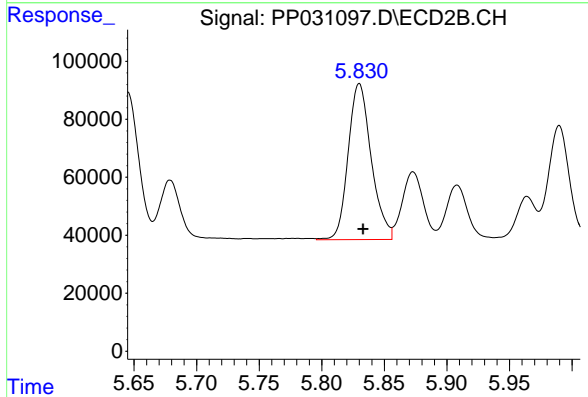
R.T.: 5.600 min
Delta R.T.: -0.003 min
Response: 532582
Conc: 577.48 ng/ml



#7 AR-1016-5

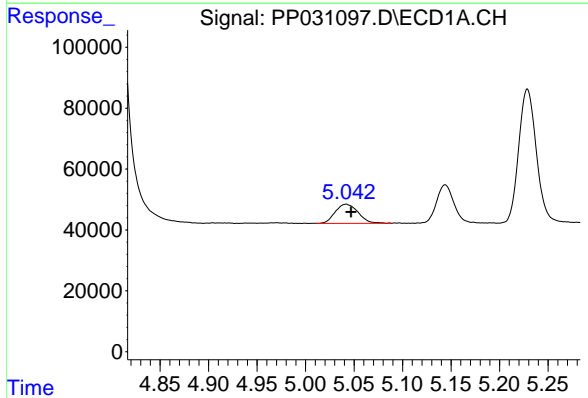
R.T.: 6.614 min
 Delta R.T.: -0.003 min
 Response: 659163
 Conc: 528.77 ng/ml

Instrument :
 ECD_P
 ClientSampleId :
 AR1660CCC500



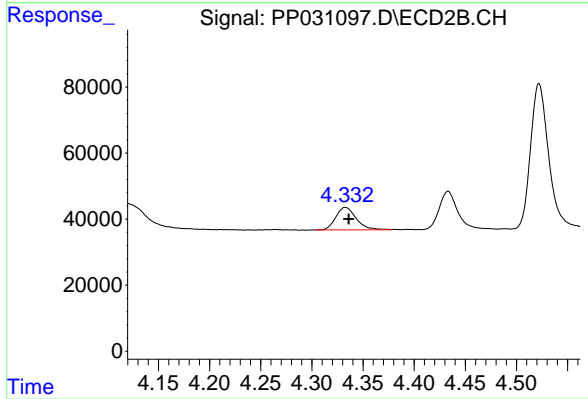
#7 AR-1016-5

R.T.: 5.830 min
 Delta R.T.: -0.003 min
 Response: 690572
 Conc: 526.14 ng/ml



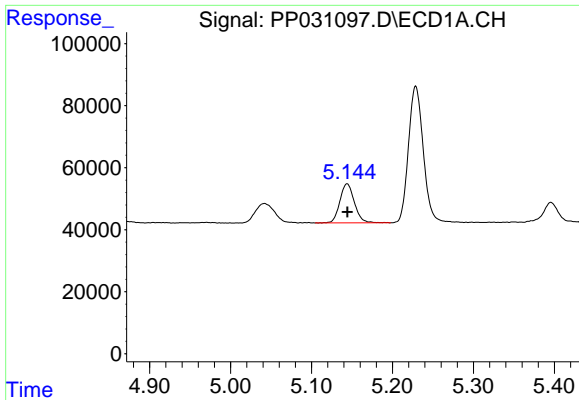
#8 AR-1221-1

R.T.: 5.042 min
 Delta R.T.: -0.005 min
 Response: 102897
 Conc: 170.40 ng/ml



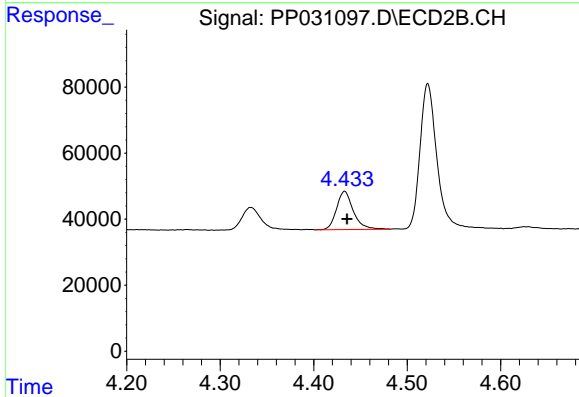
#8 AR-1221-1

R.T.: 4.333 min
 Delta R.T.: -0.003 min
 Response: 95624
 Conc: 169.79 ng/ml

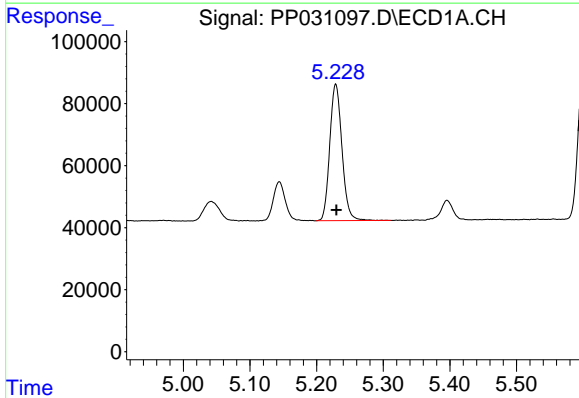


#9 AR-1221-2
 R.T.: 5.144 min
 Delta R.T.: 0.000 min
 Response: 156807
 Conc: 349.11 ng/ml

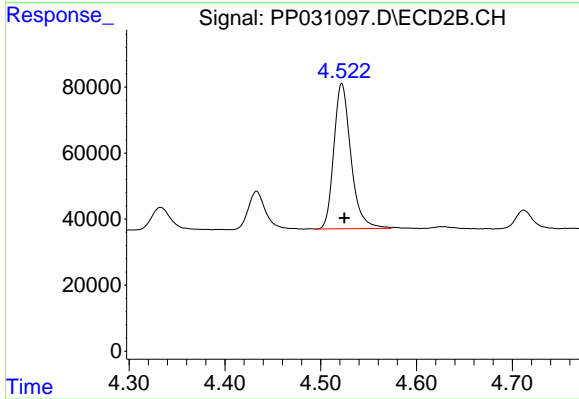
Instrument :
 ECD_P
ClientSampleId :
 AR1660CCC500



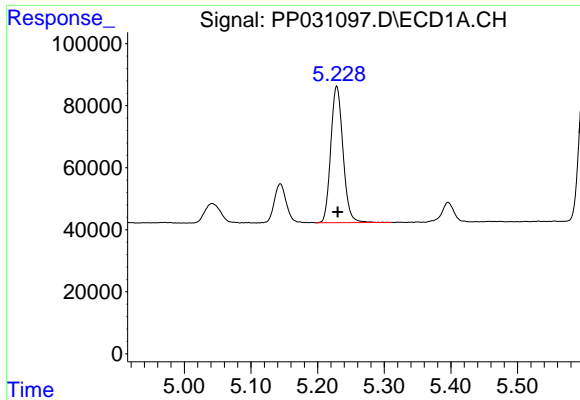
#9 AR-1221-2
 R.T.: 4.433 min
 Delta R.T.: -0.002 min
 Response: 144259
 Conc: 347.71 ng/ml



#10 AR-1221-3
 R.T.: 5.229 min
 Delta R.T.: 0.000 min
 Response: 560791
 Conc: 415.50 ng/ml



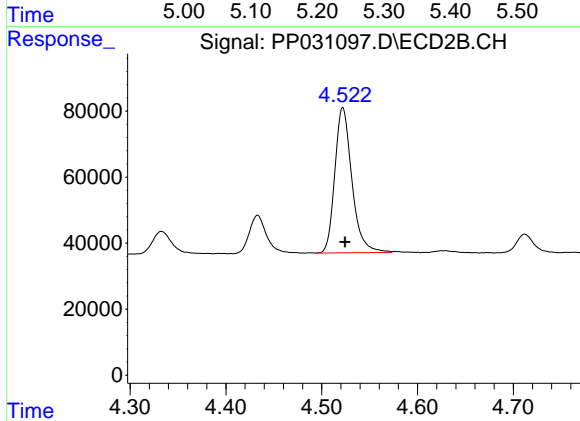
#10 AR-1221-3
 R.T.: 4.522 min
 Delta R.T.: -0.003 min
 Response: 544352
 Conc: 415.09 ng/ml



#11 AR-1232-1

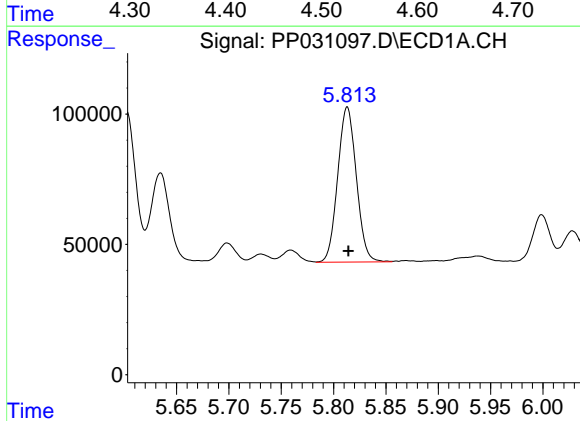
R.T.: 5.229 min
 Delta R.T.: -0.002 min
 Response: 560791
 Conc: 458.53 ng/ml

Instrument :
 ECD_P
 ClientSampleId :
 AR1660CCC500



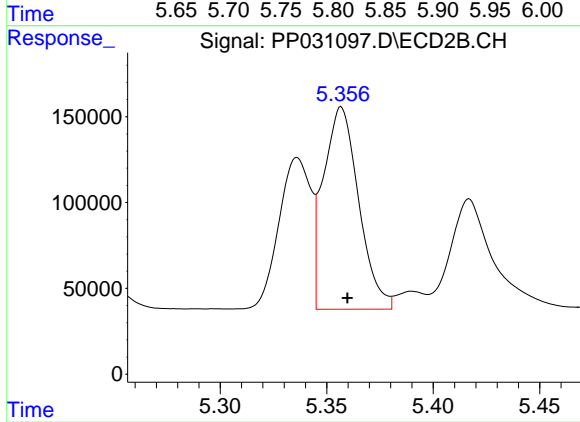
#11 AR-1232-1

R.T.: 4.522 min
 Delta R.T.: -0.002 min
 Response: 544352
 Conc: 454.44 ng/ml



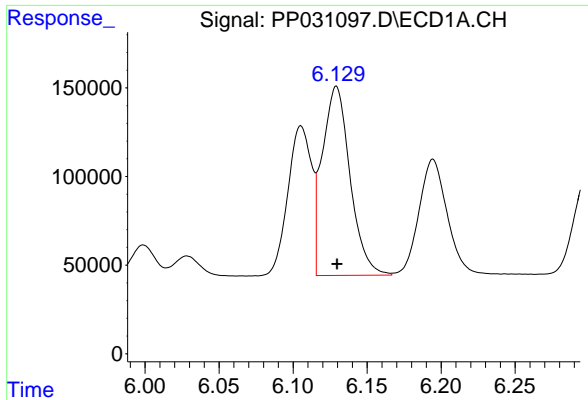
#12 AR-1232-2

R.T.: 5.813 min
 Delta R.T.: 0.000 min
 Response: 737082
 Conc: 1213.84 ng/ml



#12 AR-1232-2

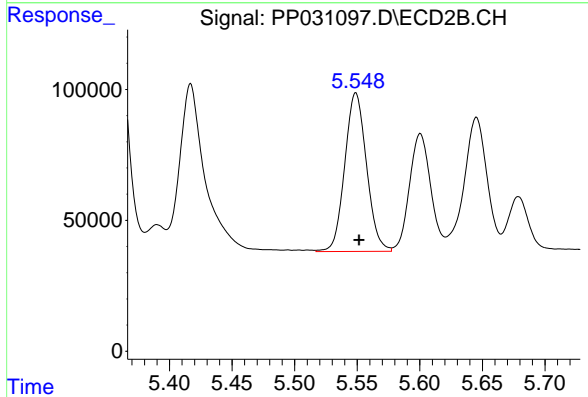
R.T.: 5.357 min
 Delta R.T.: -0.003 min
 Response: 1355841
 Conc: 1275.85 ng/ml



#13 AR-1232-3

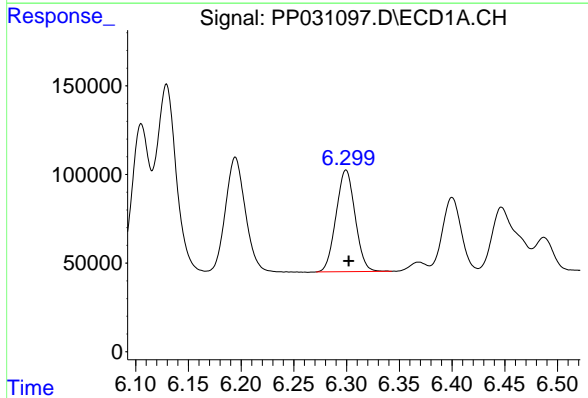
R.T.: 6.129 min
 Delta R.T.: 0.000 min
 Response: 1394400
 Conc: 1248.21 ng/ml

Instrument :
 ECD_P
 ClientSampleId :
 AR1660CCC500



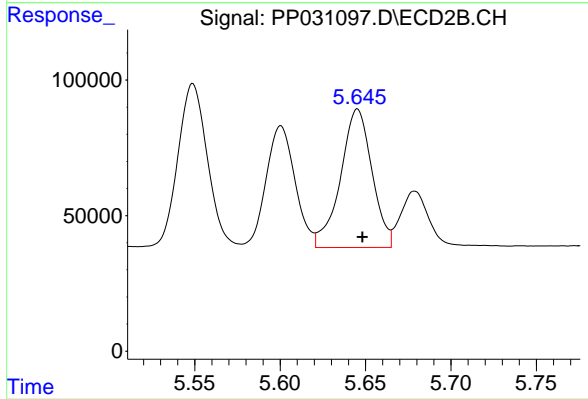
#13 AR-1232-3

R.T.: 5.549 min
 Delta R.T.: -0.003 min
 Response: 733602
 Conc: 1430.87 ng/ml



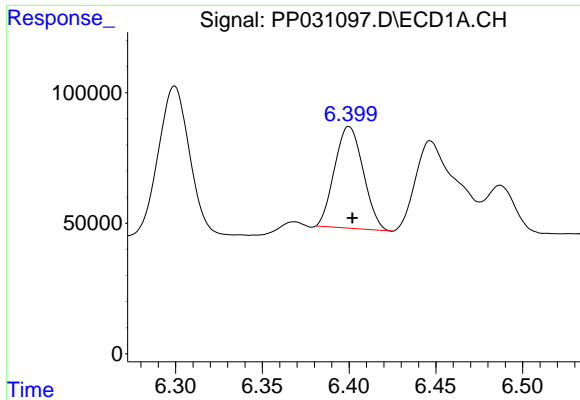
#14 AR-1232-4

R.T.: 6.299 min
 Delta R.T.: -0.002 min
 Response: 721042
 Conc: 1270.45 ng/ml



#14 AR-1232-4

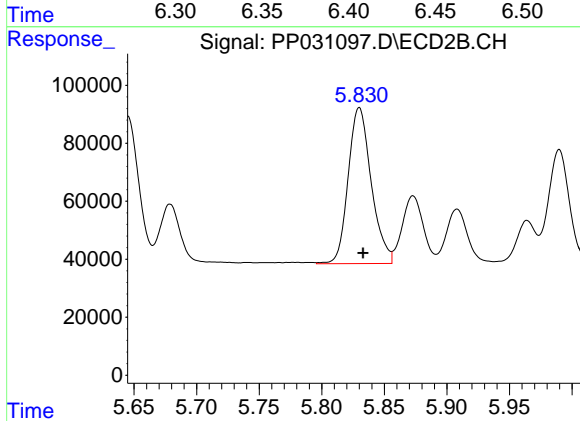
R.T.: 5.645 min
 Delta R.T.: -0.003 min
 Response: 656603
 Conc: 1503.37 ng/ml



#15 AR-1232-5

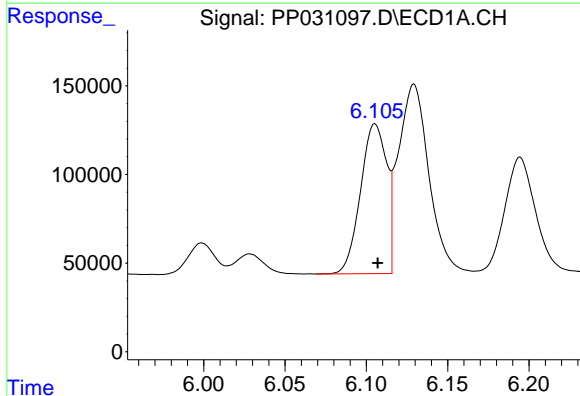
R.T.: 6.400 min
 Delta R.T.: -0.002 min
 Response: 447281
 Conc: 1290.82 ng/ml

Instrument :
 ECD_P
 ClientSampleId :
 AR1660CCC500



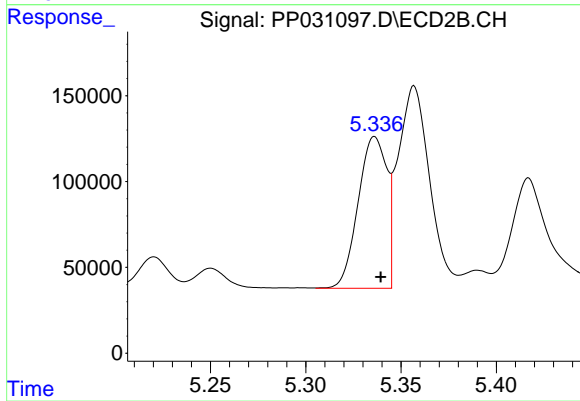
#15 AR-1232-5

R.T.: 5.830 min
 Delta R.T.: -0.003 min
 Response: 690572
 Conc: 1430.07 ng/ml



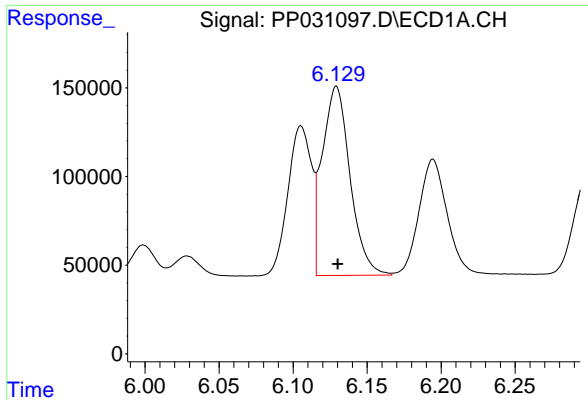
#16 AR-1242-1

R.T.: 6.105 min
 Delta R.T.: -0.002 min
 Response: 944909
 Conc: 703.32 ng/ml



#16 AR-1242-1

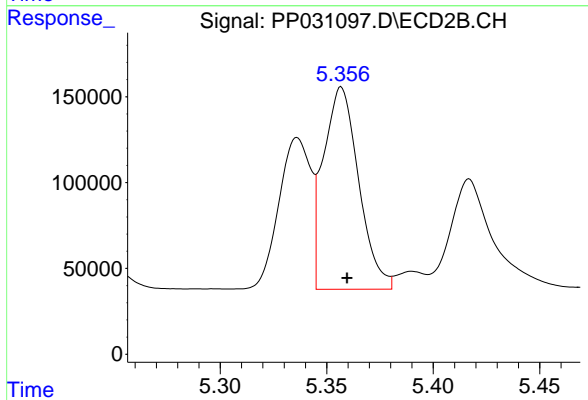
R.T.: 5.336 min
 Delta R.T.: -0.003 min
 Response: 924347
 Conc: 718.26 ng/ml



#17 AR-1242-2

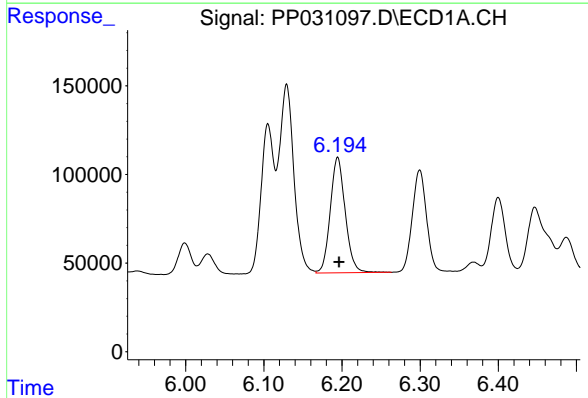
R.T.: 6.129 min
 Delta R.T.: -0.001 min
 Response: 1394400
 Conc: 713.98 ng/ml

Instrument :
 ECD_P
 ClientSampleId :
 AR1660CCC500



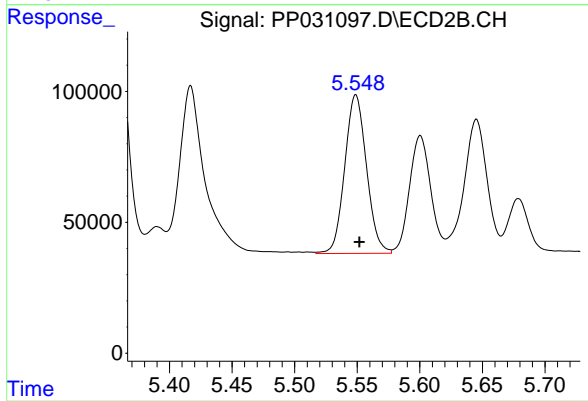
#17 AR-1242-2

R.T.: 5.357 min
 Delta R.T.: -0.003 min
 Response: 1355841
 Conc: 726.08 ng/ml



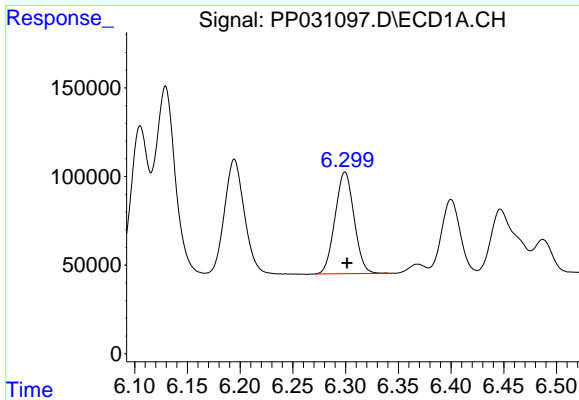
#18 AR-1242-3

R.T.: 6.195 min
 Delta R.T.: -0.002 min
 Response: 868325
 Conc: 711.99 ng/ml



#18 AR-1242-3

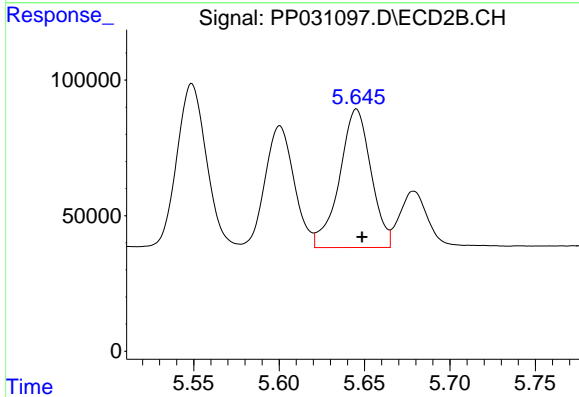
R.T.: 5.549 min
 Delta R.T.: -0.003 min
 Response: 733602
 Conc: 781.38 ng/ml



#19 AR-1242-4

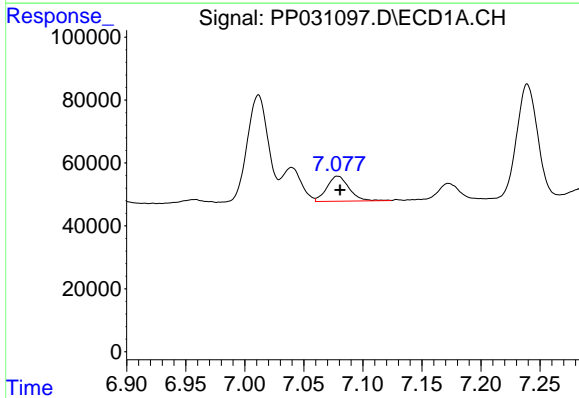
R.T.: 6.299 min
 Delta R.T.: -0.002 min
 Response: 721042
 Conc: 711.71 ng/ml

Instrument :
 ECD_P
 ClientSampleId :
 AR1660CCC500



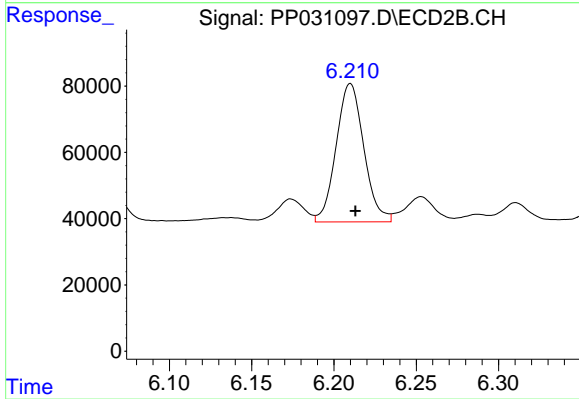
#19 AR-1242-4

R.T.: 5.645 min
 Delta R.T.: -0.003 min
 Response: 656603
 Conc: 757.15 ng/ml



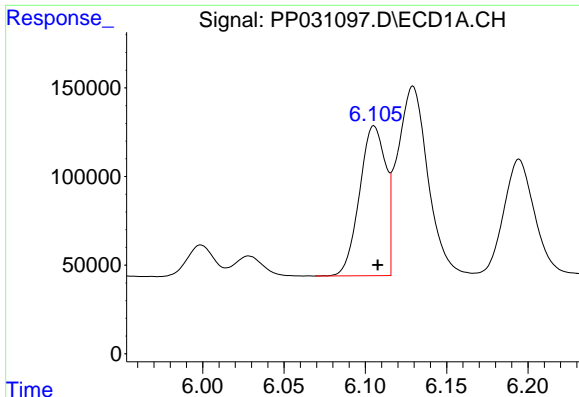
#20 AR-1242-5

R.T.: 7.079 min
 Delta R.T.: -0.002 min
 Response: 103959
 Conc: 108.94 ng/ml



#20 AR-1242-5

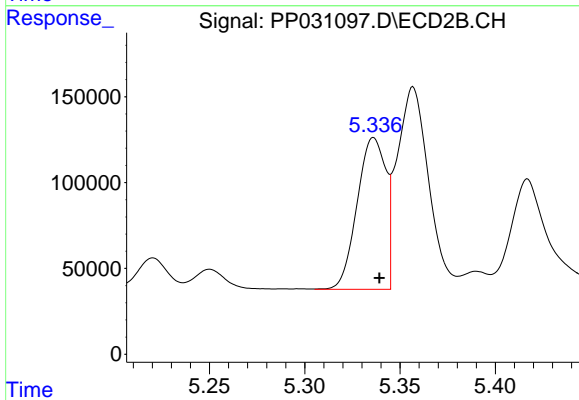
R.T.: 6.210 min
 Delta R.T.: -0.003 min
 Response: 488275
 Conc: 490.48 ng/ml



#21 AR-1248-1

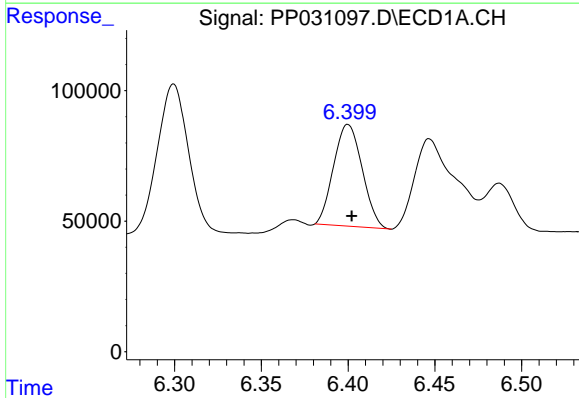
R.T.: 6.105 min
 Delta R.T.: -0.002 min
 Response: 944909
 Conc: 979.89 ng/ml

Instrument :
 ECD_P
 ClientSampled :
 AR1660CCC500



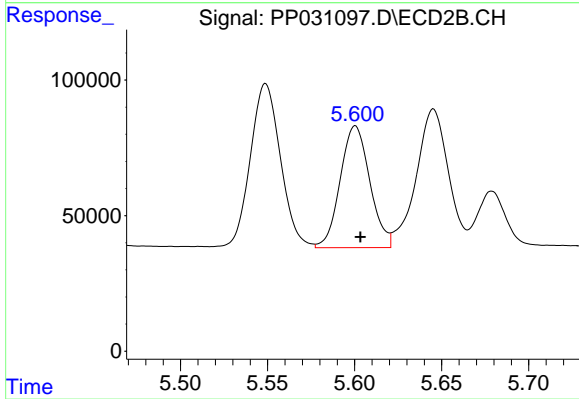
#21 AR-1248-1

R.T.: 5.336 min
 Delta R.T.: -0.003 min
 Response: 924347
 Conc: 998.97 ng/ml



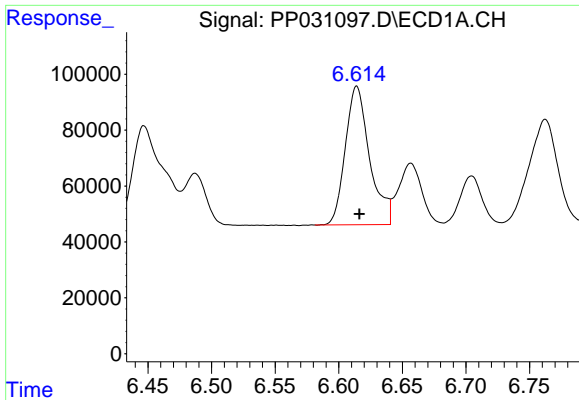
#22 AR-1248-2

R.T.: 6.400 min
 Delta R.T.: -0.002 min
 Response: 447281
 Conc: 386.73 ng/ml



#22 AR-1248-2

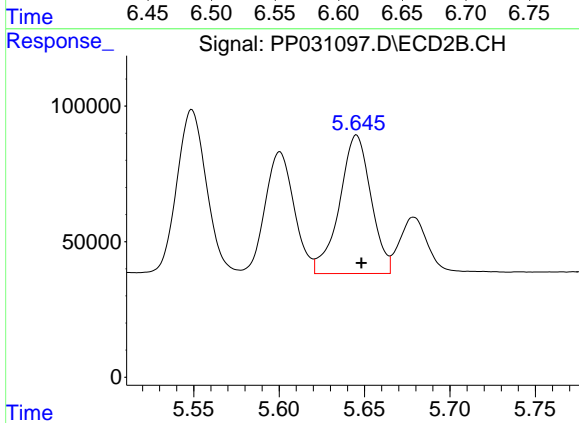
R.T.: 5.600 min
 Delta R.T.: -0.003 min
 Response: 532582
 Conc: 483.24 ng/ml



#23 AR-1248-3

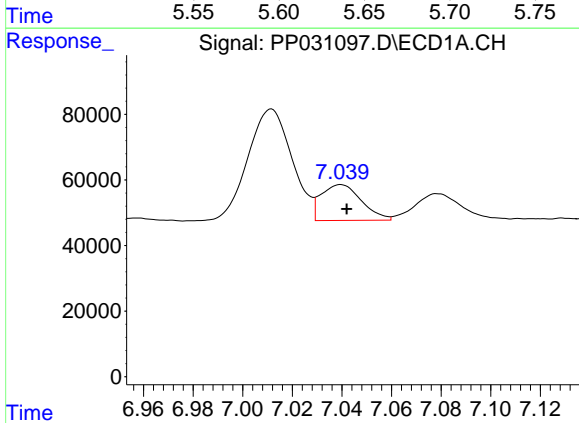
R.T.: 6.614 min
 Delta R.T.: -0.002 min
 Response: 659163
 Conc: 463.29 ng/ml

Instrument :
 ECD_P
 ClientSampled :
 AR1660CCC500



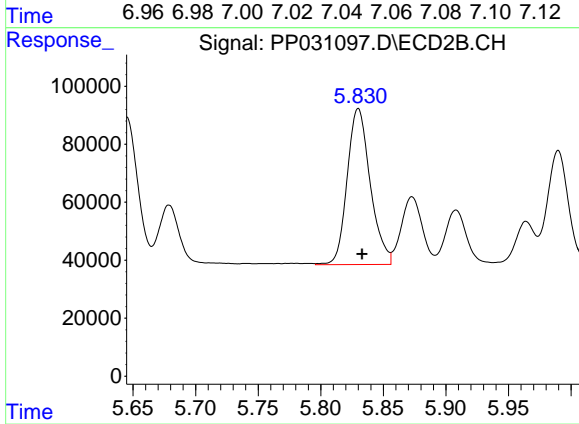
#23 AR-1248-3

R.T.: 5.645 min
 Delta R.T.: -0.003 min
 Response: 656603
 Conc: 542.49 ng/ml



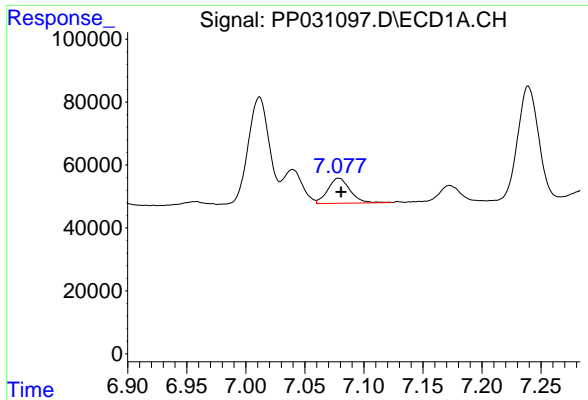
#24 AR-1248-4

R.T.: 7.040 min
 Delta R.T.: -0.002 min
 Response: 123085
 Conc: 80.76 ng/ml



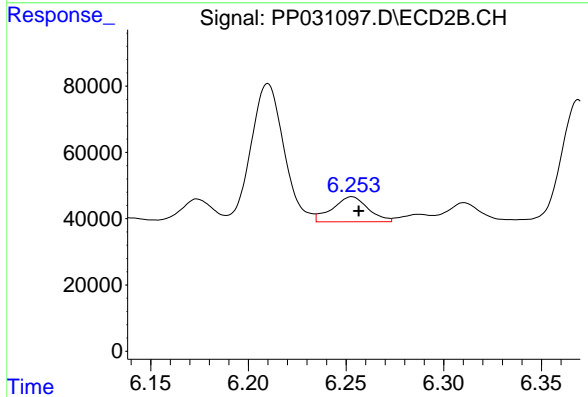
#24 AR-1248-4

R.T.: 5.830 min
 Delta R.T.: -0.003 min
 Response: 690572
 Conc: 467.92 ng/ml

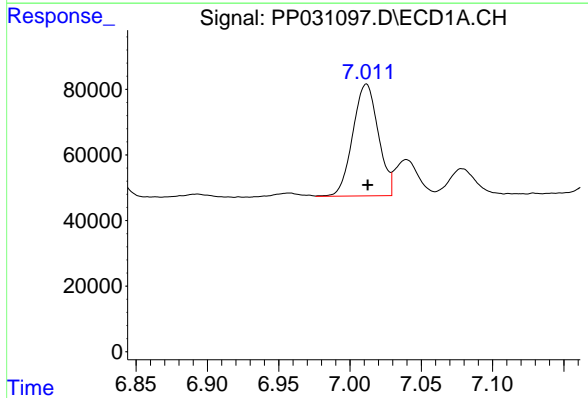


#25 AR-1248-5
 R.T.: 7.079 min
 Delta R.T.: -0.002 min
 Response: 103959
 Conc: 68.53 ng/ml

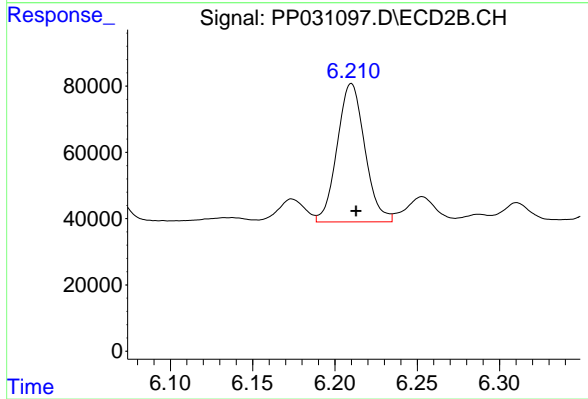
Instrument :
 ECD_P
 ClientSampleId :
 AR1660CCC500



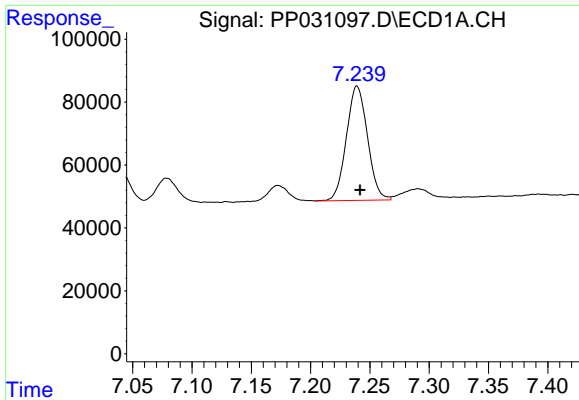
#25 AR-1248-5
 R.T.: 6.253 min
 Delta R.T.: -0.003 min
 Response: 95841
 Conc: 75.89 ng/ml



#26 AR-1254-1
 R.T.: 7.011 min
 Delta R.T.: -0.001 min
 Response: 424236
 Conc: 302.16 ng/ml



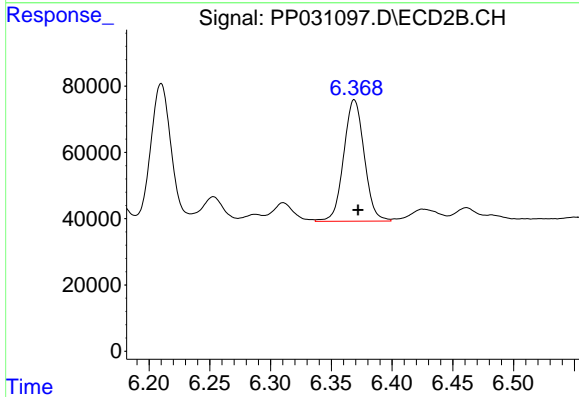
#26 AR-1254-1
 R.T.: 6.210 min
 Delta R.T.: -0.003 min
 Response: 488275
 Conc: 248.27 ng/ml



#27 AR-1254-2

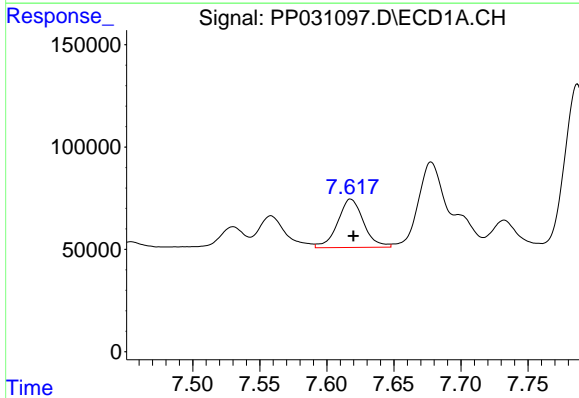
R.T.: 7.239 min
 Delta R.T.: -0.002 min
 Response: 451314
 Conc: 216.51 ng/ml

Instrument :
 ECD_P
 ClientSampleId :
 AR1660CCC500



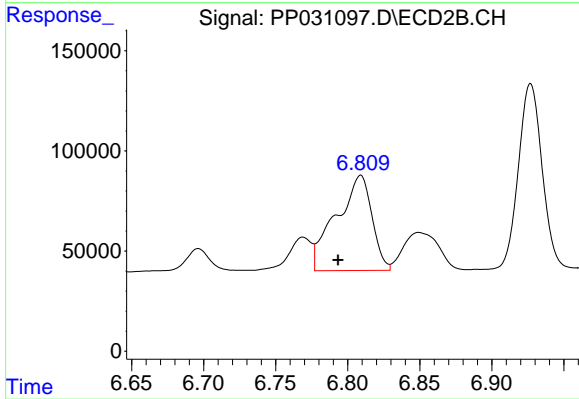
#27 AR-1254-2

R.T.: 6.369 min
 Delta R.T.: -0.003 min
 Response: 431463
 Conc: 262.57 ng/ml



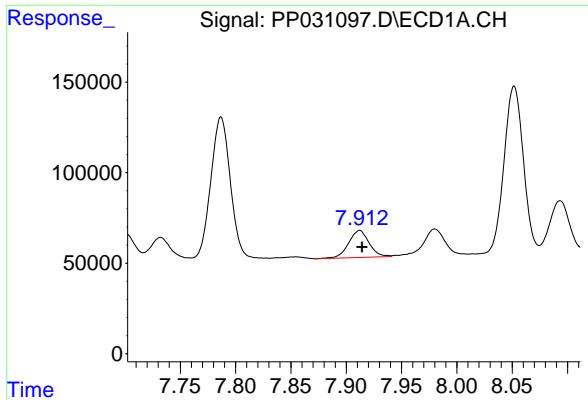
#28 AR-1254-3

R.T.: 7.618 min
 Delta R.T.: -0.002 min
 Response: 316966
 Conc: 137.33 ng/ml



#28 AR-1254-3

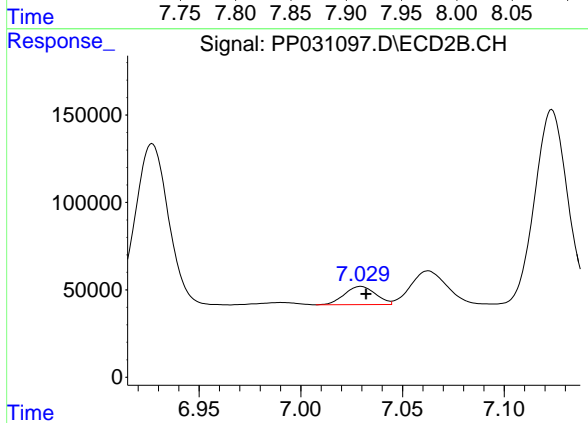
R.T.: 6.809 min
 Delta R.T.: 0.016 min
 Response: 821194
 Conc: 299.89 ng/ml



#29 AR-1254-4

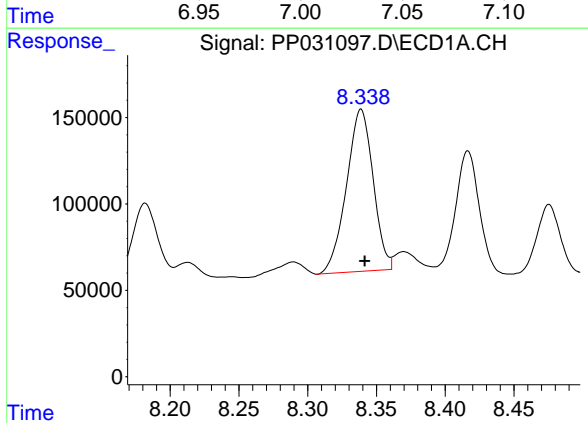
R.T.: 7.912 min
 Delta R.T.: -0.002 min
 Response: 192130
 Conc: 117.35 ng/ml

Instrument :
 ECD_P
 ClientSampleId :
 AR1660CCC500



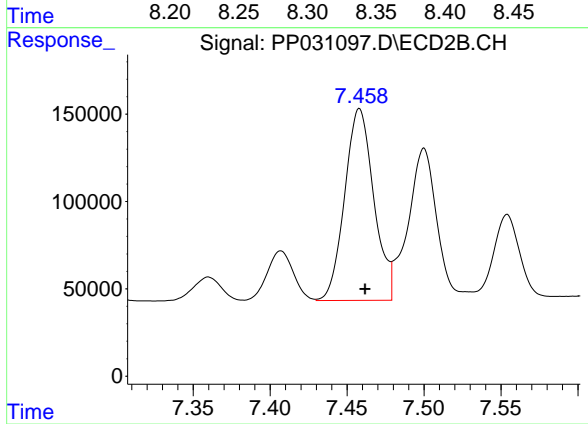
#29 AR-1254-4

R.T.: 7.030 min
 Delta R.T.: -0.003 min
 Response: 110721
 Conc: 68.62 ng/ml



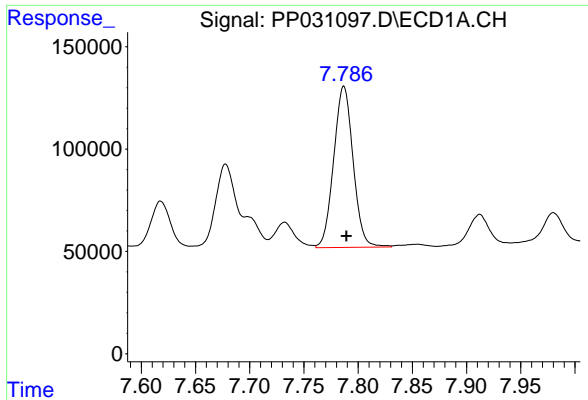
#30 AR-1254-5

R.T.: 8.339 min
 Delta R.T.: -0.003 min
 Response: 1265603
 Conc: 749.71 ng/ml



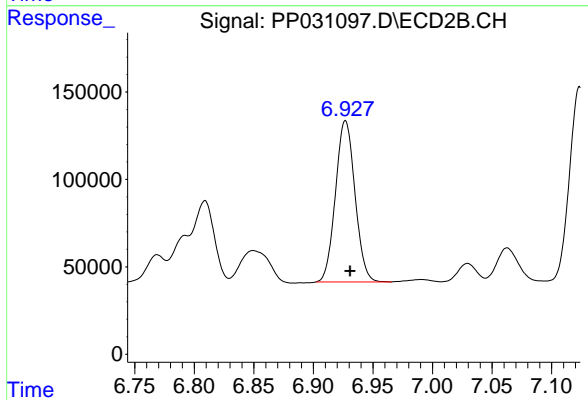
#30 AR-1254-5

R.T.: 7.458 min
 Delta R.T.: -0.004 min
 Response: 1443032
 Conc: 659.07 ng/ml

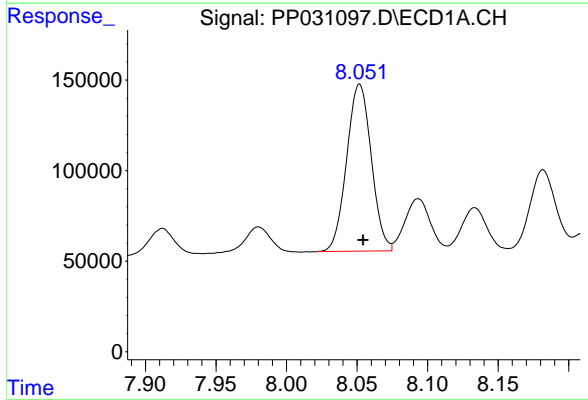


#31 AR-1260-1
 R.T.: 7.787 min
 Delta R.T.: -0.002 min
 Response: 980914
 Conc: 534.02 ng/ml

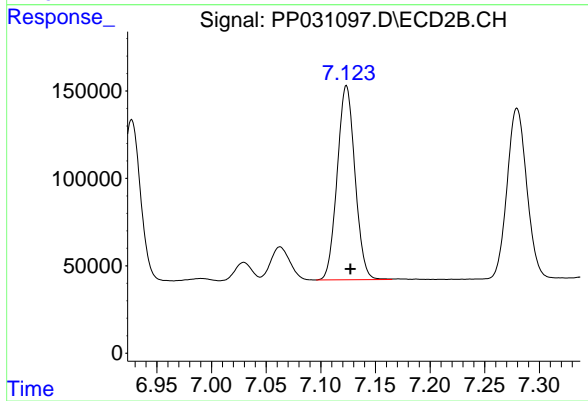
Instrument :
 ECD_P
 ClientSampleId :
 AR1660CCC500



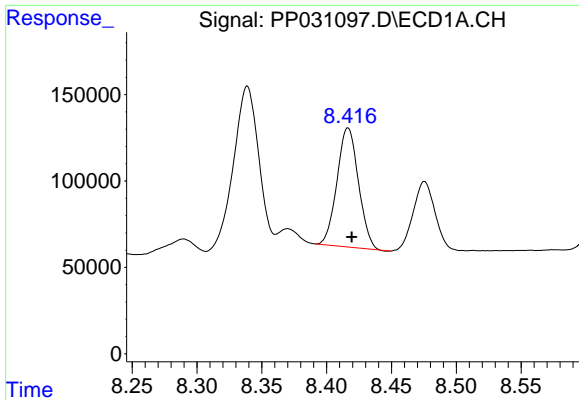
#31 AR-1260-1
 R.T.: 6.927 min
 Delta R.T.: -0.004 min
 Response: 1050591
 Conc: 524.20 ng/ml



#32 AR-1260-2
 R.T.: 8.052 min
 Delta R.T.: -0.003 min
 Response: 1121372
 Conc: 520.52 ng/ml



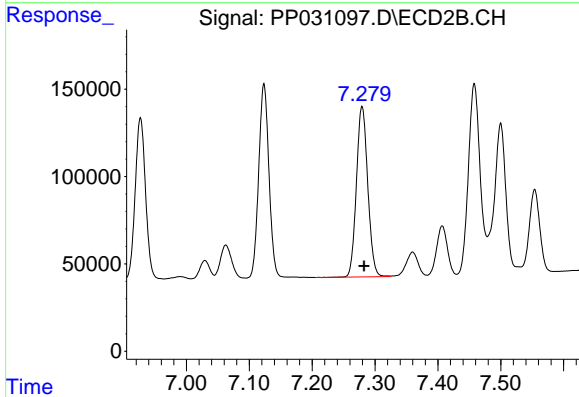
#32 AR-1260-2
 R.T.: 7.123 min
 Delta R.T.: -0.004 min
 Response: 1257789
 Conc: 537.10 ng/ml



#33 AR-1260-3

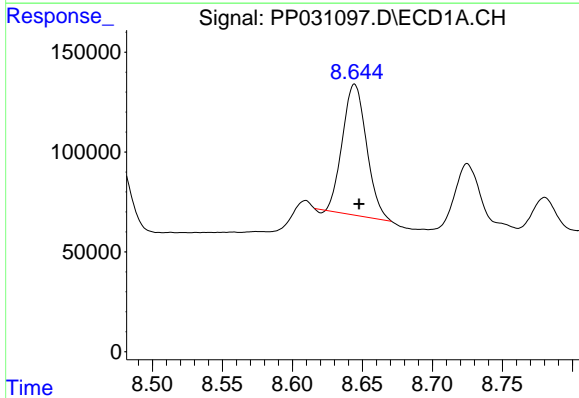
R.T.: 8.417 min
 Delta R.T.: -0.003 min
 Response: 794464
 Conc: 482.64 ng/ml

Instrument :
 ECD_P
 ClientSampleId :
 AR1660CCC500



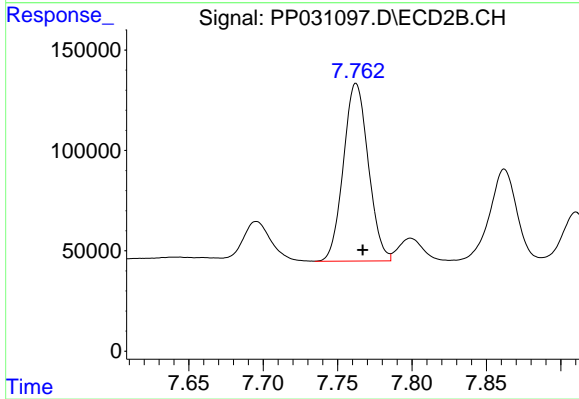
#33 AR-1260-3

R.T.: 7.279 min
 Delta R.T.: -0.003 min
 Response: 1226010
 Conc: 539.26 ng/ml



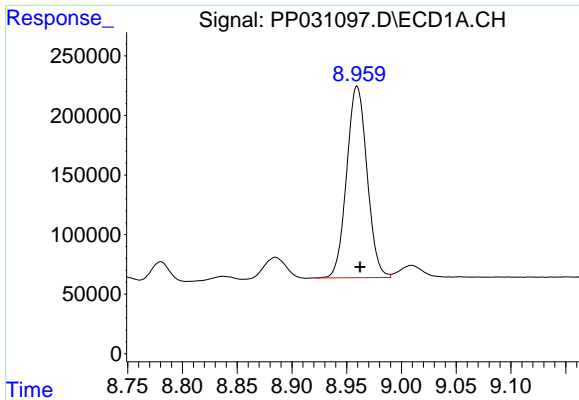
#34 AR-1260-4

R.T.: 8.644 min
 Delta R.T.: -0.003 min
 Response: 777596
 Conc: 418.21 ng/ml



#34 AR-1260-4

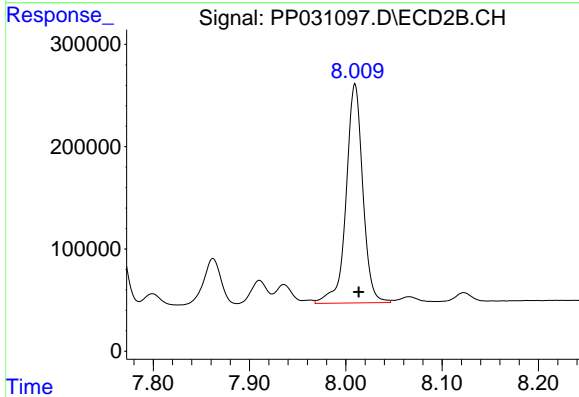
R.T.: 7.762 min
 Delta R.T.: -0.004 min
 Response: 1031220
 Conc: 565.22 ng/ml



#35 AR-1260-5

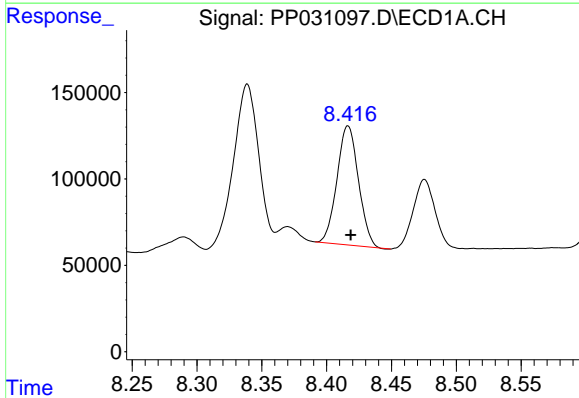
R.T.: 8.960 min
 Delta R.T.: -0.003 min
 Response: 2083300
 Conc: 552.53 ng/ml

Instrument :
 ECD_P
 ClientSampleId :
 AR1660CCC500



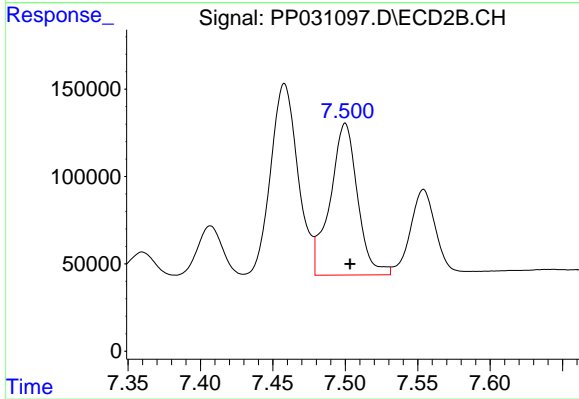
#35 AR-1260-5

R.T.: 8.010 min
 Delta R.T.: -0.004 min
 Response: 2566574
 Conc: 570.30 ng/ml



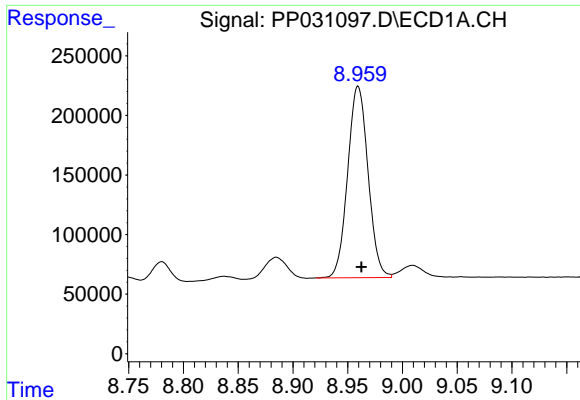
#36 AR-1262-1

R.T.: 8.417 min
 Delta R.T.: -0.002 min
 Response: 794464
 Conc: 395.41 ng/ml



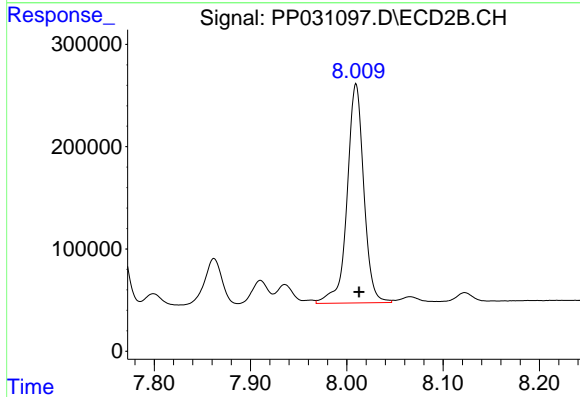
#36 AR-1262-1

R.T.: 7.500 min
 Delta R.T.: -0.003 min
 Response: 1144610
 Conc: 492.79 ng/ml

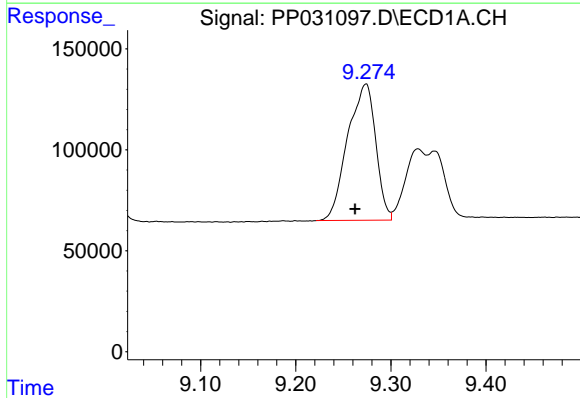


#37 AR-1262-2
R.T.: 8.960 min
Delta R.T.: -0.003 min
Response: 2083300
Conc: 573.19 ng/ml

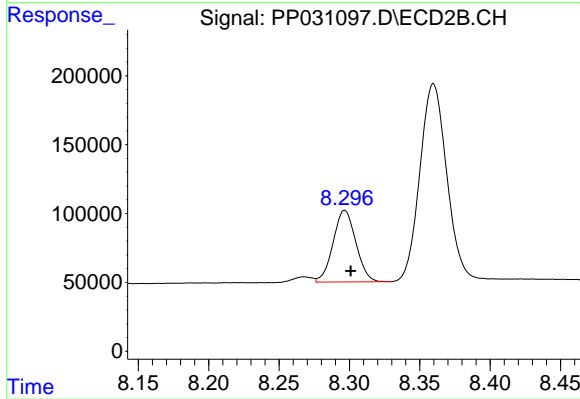
Instrument :
ECD_P
ClientSampleId :
AR1660CCC500



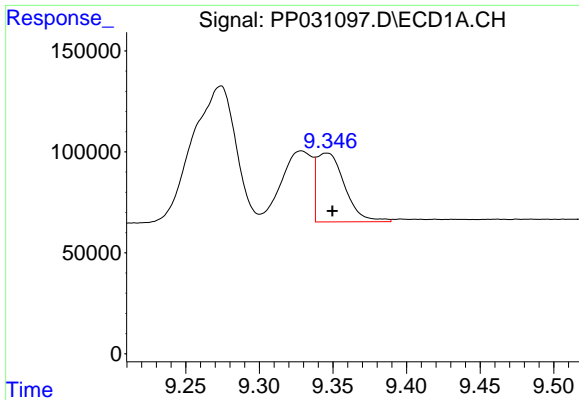
#37 AR-1262-2
R.T.: 8.010 min
Delta R.T.: -0.003 min
Response: 2566574
Conc: 619.08 ng/ml



#38 AR-1262-3
R.T.: 9.274 min
Delta R.T.: 0.012 min
Response: 1386230
Conc: 536.24 ng/ml



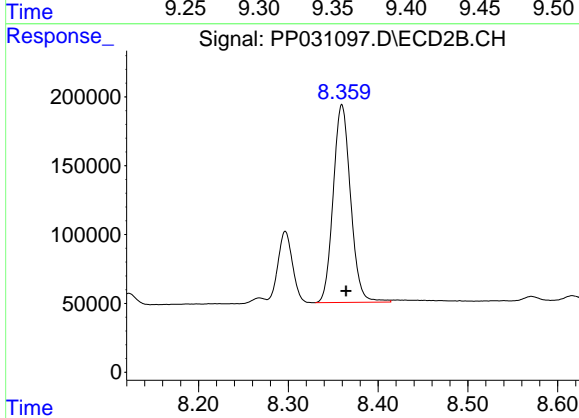
#38 AR-1262-3
R.T.: 8.297 min
Delta R.T.: -0.004 min
Response: 586725
Conc: 346.06 ng/ml



#39 AR-1262-4

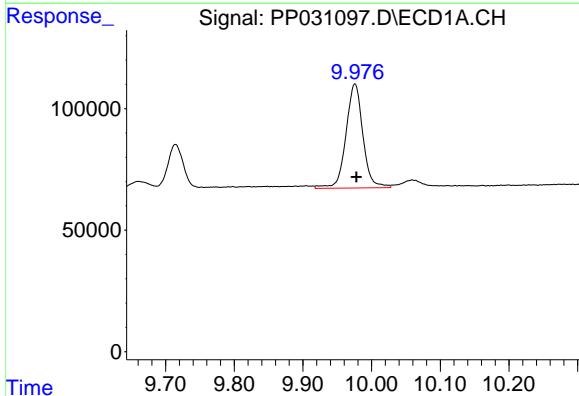
R.T.: 9.346 min
Delta R.T.: -0.004 min
Response: 451105
Conc: 219.11 ng/ml

Instrument :
ECD_P
ClientSampleId :
AR1660CCC500



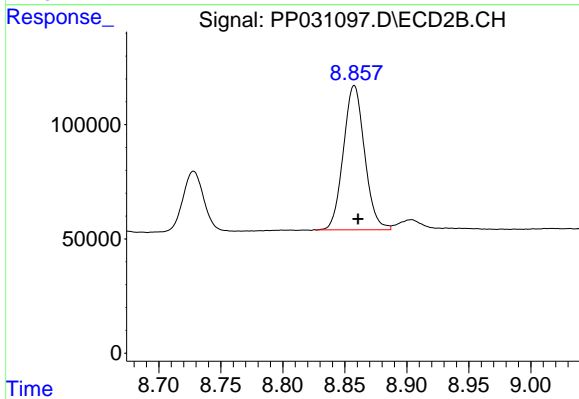
#39 AR-1262-4

R.T.: 8.360 min
Delta R.T.: -0.005 min
Response: 1934345
Conc: 609.14 ng/ml



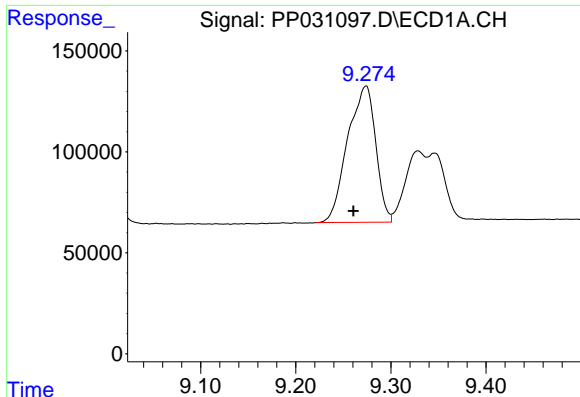
#40 AR-1262-5

R.T.: 9.976 min
Delta R.T.: -0.002 min
Response: 733618
Conc: 517.90 ng/ml



#40 AR-1262-5

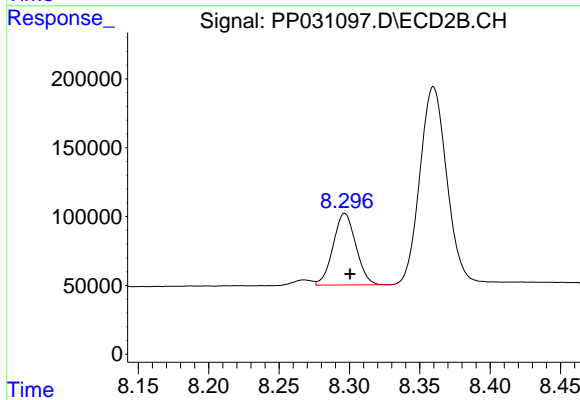
R.T.: 8.858 min
Delta R.T.: -0.003 min
Response: 751273
Conc: 467.43 ng/ml



#41 AR-1268-1

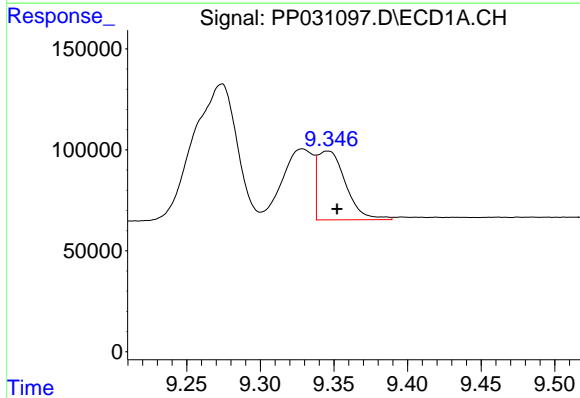
R.T.: 9.274 min
Delta R.T.: 0.013 min
Response: 1386230
Conc: 317.35 ng/ml

Instrument :
ECD_P
ClientSampleId :
AR1660CCC500



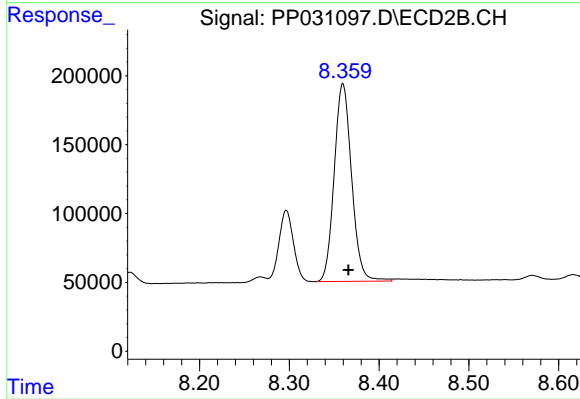
#41 AR-1268-1

R.T.: 8.297 min
Delta R.T.: -0.004 min
Response: 586725
Conc: 119.85 ng/ml



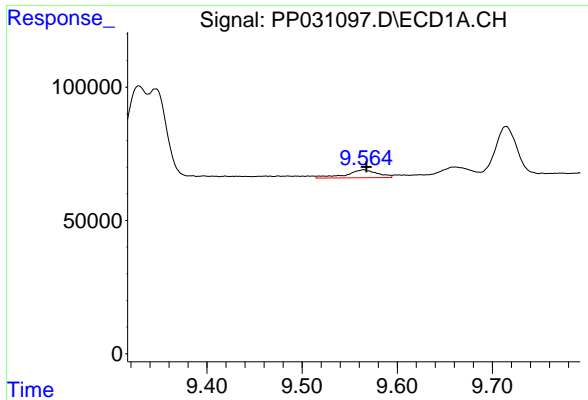
#42 AR-1268-2

R.T.: 9.346 min
Delta R.T.: -0.006 min
Response: 451105
Conc: 104.90 ng/ml



#42 AR-1268-2

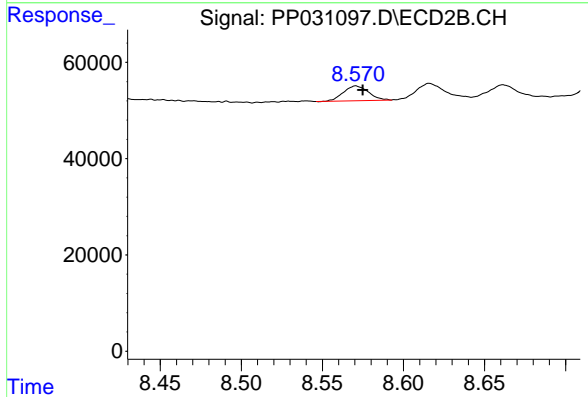
R.T.: 8.360 min
Delta R.T.: -0.006 min
Response: 1934345
Conc: 406.72 ng/ml



#43 AR-1268-3

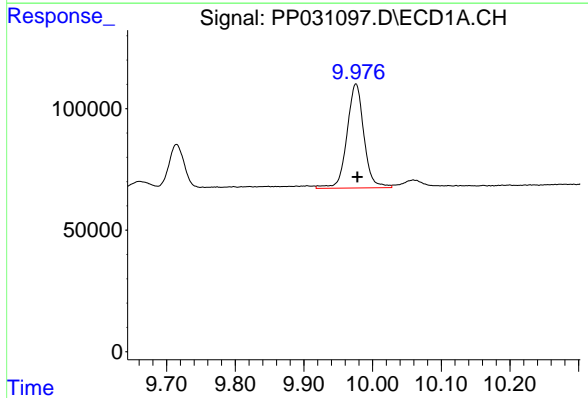
R.T.: 9.565 min
 Delta R.T.: -0.003 min
 Response: 68445
 Conc: 18.93 ng/ml

Instrument :
 ECD_P
ClientSampleId :
 AR1660CCC500



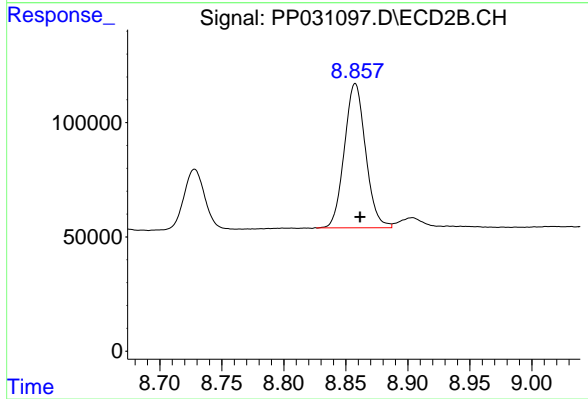
#43 AR-1268-3

R.T.: 8.571 min
 Delta R.T.: -0.004 min
 Response: 32987
 Conc: 8.24 ng/ml



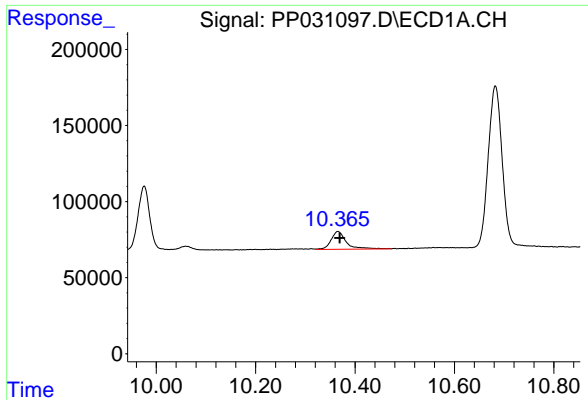
#44 AR-1268-4

R.T.: 9.976 min
 Delta R.T.: -0.002 min
 Response: 733618
 Conc: 463.18 ng/ml



#44 AR-1268-4

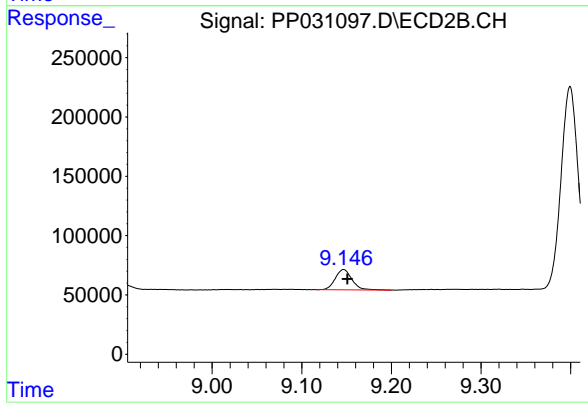
R.T.: 8.858 min
 Delta R.T.: -0.004 min
 Response: 751273
 Conc: 443.41 ng/ml



#45 AR-1268-5

R.T.: 10.365 min
Delta R.T.: -0.004 min
Response: 248036
Conc: 20.74 ng/ml

Instrument :
ECD_P
ClientSampleId :
AR1660CCC500



#45 AR-1268-5

R.T.: 9.147 min
Delta R.T.: -0.004 min
Response: 219847
Conc: 16.39 ng/ml