

Data Path : Z:\pestpcbsrv\HPCHEM1\ECD_P\Data\PP110420\
 Data File : PP031101.D
 Signal(s) : Signal #1: ECD1A.CH Signal #2: ECD2B.CH
 Acq On : 04 Nov 2020 13:41
 Operator : DD\AJ
 Sample : L4214-07
 Misc : AR1232 LOD 25 PPB
 ALS Vial : 16 Sample Multiplier: 1

Instrument :
 ECD_P
 ClientSampleId :
 LOD-MDL-WATER-01-QT4-2020

Integration File signal 1: autoint1.e
 Integration File signal 2: autoint2.e
 Quant Time: Nov 05 05:02:19 2020
 Quant Method : Z:\pestpcbsrv\HPCHEM1\ECD_P\methods\PP110420.M
 Quant Title : GC EXTRACTABLES
 QLast Update : Wed Nov 04 08:24:38 2020
 Response via : Initial Calibration
 Integrator: ChemStation 6890 Scale Mode: Small noise peaks clipped

Volume Inj. : 2 µl
 Signal #1 Phase : ZB-MR1 Signal #2 Phase: ZB-MR2
 Signal #1 Info : 30Mx0.32mmx 0.50µ Signal #2 Info : 30M x 0.32mm x 0.25µm

Compound	RT#1	RT#2	Resp#1	Resp#2	ng/ml	ng/ml
System Monitoring Compounds						
1) SA Tetrachlo...	4.800	4.076	914653	873324	13.694	13.139
2) SA Decachlor...	10.682	9.399	576902	638803	14.428	15.298
Target Compounds						
3) L1 AR-1016-1	6.105	5.335	16728	17063	8.591	9.197
4) L1 AR-1016-2	6.129	5.356	25295	22063	8.861	8.117
5) L1 AR-1016-3	6.196	5.549	17726	13404	10.177	10.583
6) L1 AR-1016-4	6.302	5.600	12110	5553	8.381	6.021 #
7) L1 AR-1016-5	6.614	5.828	11403	9945	9.147	7.577
8) L2 AR-1221-1	5.043	4.337	11398	7797	18.874	13.844 #
9) L2 AR-1221-2	5.146	4.432	19412	16027	43.217	38.632
10) L2 AR-1221-3	5.229	4.525	26413	24256	19.570	18.496
11) L3 AR-1232-1	5.229	4.525	26413	24256	21.597	20.249
12) L3 AR-1232-2	5.814	5.356	13797	22063	22.721	20.762
13) L3 AR-1232-3	6.129	5.549	25295	13404	22.643	26.145
14) L3 AR-1232-4	6.302	5.647	12110	9400	21.338	21.523
15) L3 AR-1232-5	6.401	5.828	7227	9945	20.856	20.594
16) L4 AR-1242-1	6.105	5.335	16728	17063	12.451	13.259
17) L4 AR-1242-2	6.129	5.356	25295	22063	12.952	11.815
18) L4 AR-1242-3	6.196	5.549	17726	13404	14.535	14.277
19) L4 AR-1242-4	6.302	5.647	12110	9400	11.954	10.840
20) L4 AR-1242-5	7.078	6.209	14810	10245	15.519	10.291 #
21) L5 AR-1248-1	6.105	5.335	16728	17063	17.347	18.440
22) L5 AR-1248-2	6.401	5.600	7227	5553	6.248	5.039
23) L5 AR-1248-3	6.614	5.647	11403	9400	8.014	7.766
24) L5 AR-1248-4	7.041	5.828	14912	9945	9.784	6.738 #
25) L5 AR-1248-5	7.078	6.253	14810	10424	9.762	8.254
26) L6 AR-1254-1	7.011	6.209	19306	10245	13.751	5.209 #
27) L6 AR-1254-2	7.247	0.000	19339	0	9.277	N.D. #
28) L6 AR-1254-3	7.623	0.000	98521	0	42.686	N.D. #
30) L6 AR-1254-5	0.000	7.489f	0	544	N.D.	0.249 #
31) L7 AR-1260-1	7.792	0.000	2386	0	1.299	N.D. #
32) L7 AR-1260-2	0.000	7.118	0	1062	N.D.	0.453 #
35) L7 AR-1260-5	8.966	8.013	11427	1211	3.031	0.269 #
36) L8 AR-1262-1	0.000	7.507	0	1070	N.D.	0.461 #
37) L8 AR-1262-2	8.966	8.013	11427	1211	3.144	0.292 #
38) L8 AR-1262-3	0.000	8.303	0	4257	N.D.	2.511 #
39) L8 AR-1262-4	9.366f	8.366	10795	975	5.243	0.307 #
40) L8 AR-1262-5	9.949f	0.000	1414	0	0.999	N.D. #
41) L9 AR-1268-1	0.000	8.303	0	4257	N.D.	0.870 #
42) L9 AR-1268-2	9.366	8.366	10795	975	2.510	0.205 #
43) L9 AR-1268-3	9.568	8.566	5346	2087	1.478	0.521 #
44) L9 AR-1268-4	9.949f	0.000	1414	0	0.893	N.D. #

Data Path : Z:\pestpcbsrv\HPCHEM1\ECD_P\Data\PP110420\
 Data File : PP031101.D
 Signal(s) : Signal #1: ECD1A.CH Signal #2: ECD2B.CH
 Acq On : 04 Nov 2020 13:41
 Operator : DD\AJ
 Sample : L4214-07
 Misc : AR1232 LOD 25 PPB
 ALS Vial : 16 Sample Multiplier: 1

Instrument :
 ECD_P
ClientSampleId :
 LOD-MDL-WATER-01-QT4-2020

Integration File signal 1: autoint1.e
 Integration File signal 2: autoint2.e
 Quant Time: Nov 05 05:02:19 2020
 Quant Method : Z:\pestpcbsrv\HPCHEM1\ECD_P\methods\PP110420.M
 Quant Title : GC EXTRACTABLES
 QLast Update : Wed Nov 04 08:24:38 2020
 Response via : Initial Calibration
 Integrator: ChemStation 6890 Scale Mode: Small noise peaks clipped

Volume Inj. : 2 µl
 Signal #1 Phase : ZB-MR1 Signal #2 Phase: ZB-MR2
 Signal #1 Info : 30Mx0.32mmx 0.50µ Signal #2 Info : 30M x 0.32mm x 0.25µm

	Compound	RT#1	RT#2	Resp#1	Resp#2	ng/ml	ng/ml
45)	L9 AR-1268-5	10.380	9.146	61889	4187	5.175	0.312 #

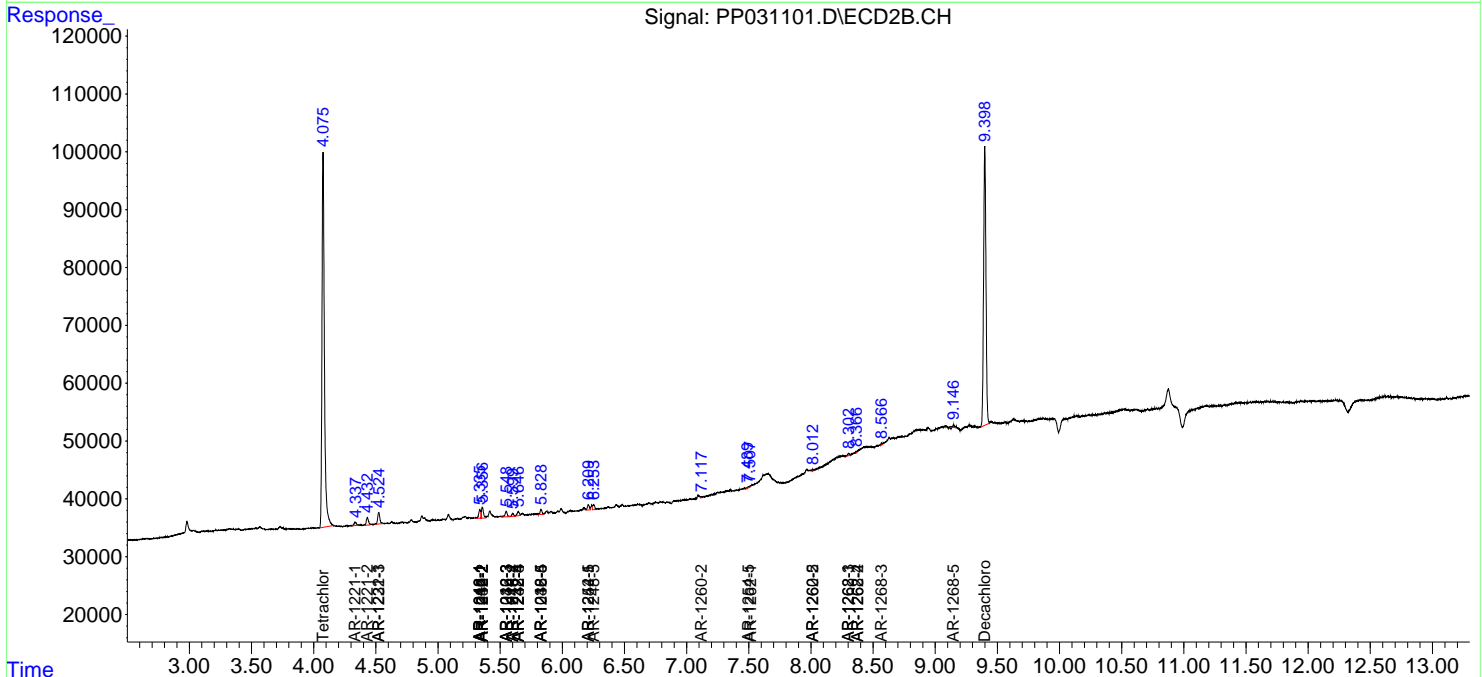
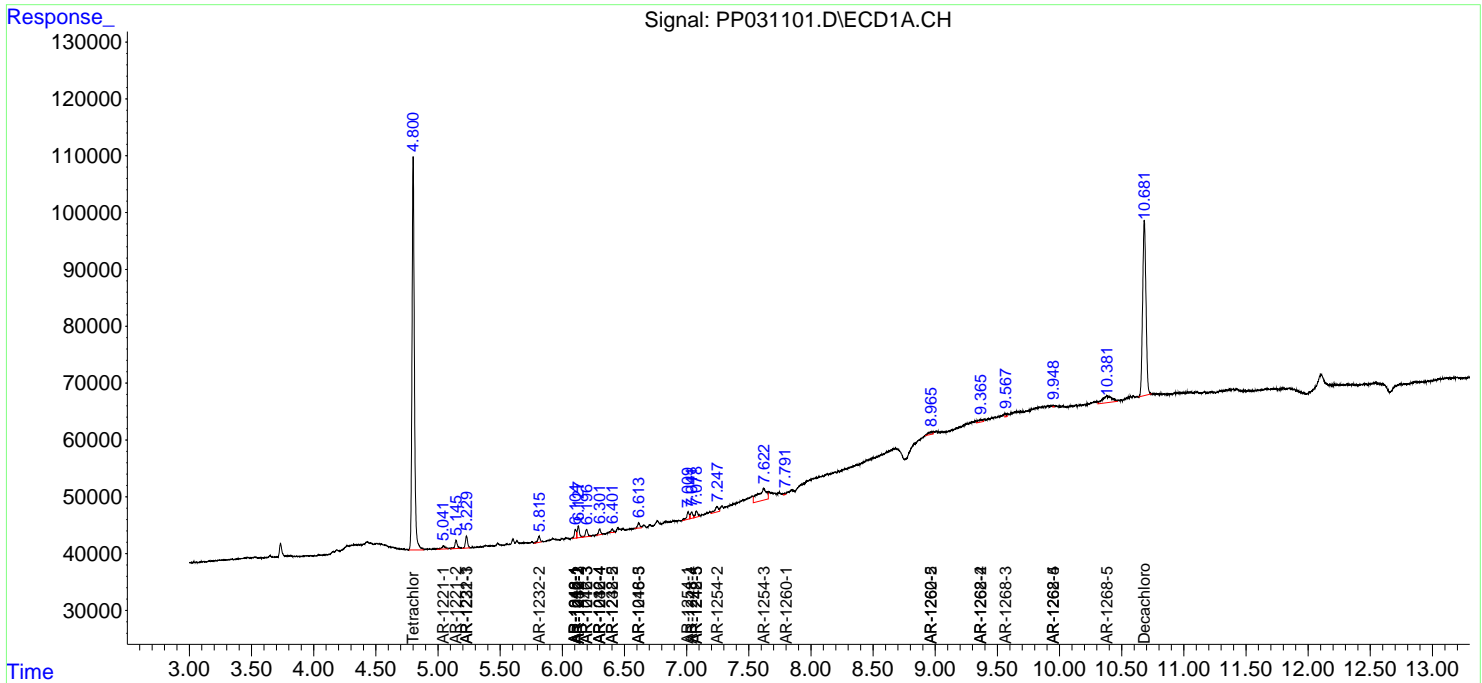
(f)=RT Delta > 1/2 Window (#)=Amounts differ by > 25% (m)=manual int.

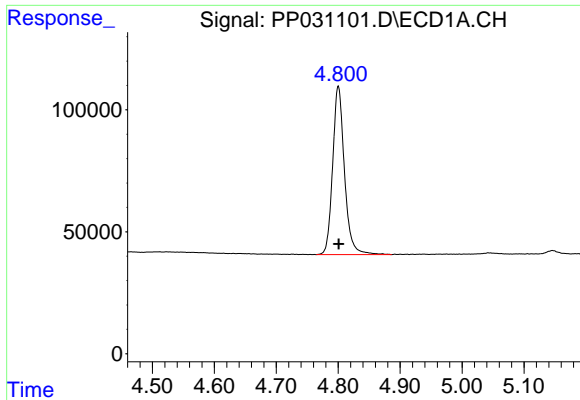
Data Path : Z:\pestpcbsrv\HPCHEM1\ECD_P\Data\PP110420\
 Data File : PP031101.D
 Signal(s) : Signal #1: ECD1A.CH Signal #2: ECD2B.CH
 Acq On : 04 Nov 2020 13:41
 Operator : DD\AJ
 Sample : L4214-07
 Misc : AR1232 LOD 25 PPB
 ALS Vial : 16 Sample Multiplier: 1

Instrument :
 ECD_P
Client Sampled :
 LOD-MDL-WATER-01-QT4-2020

Integration File signal 1: autoint1.e
 Integration File signal 2: autoint2.e
 Quant Time: Nov 05 05:02:19 2020
 Quant Method : Z:\pestpcbsrv\HPCHEM1\ECD_P\methods\PP110420.M
 Quant Title : GC EXTRACTABLES
 QLast Update : Wed Nov 04 08:24:38 2020
 Response via : Initial Calibration
 Integrator: ChemStation 6890 Scale Mode: Small noise peaks clipped

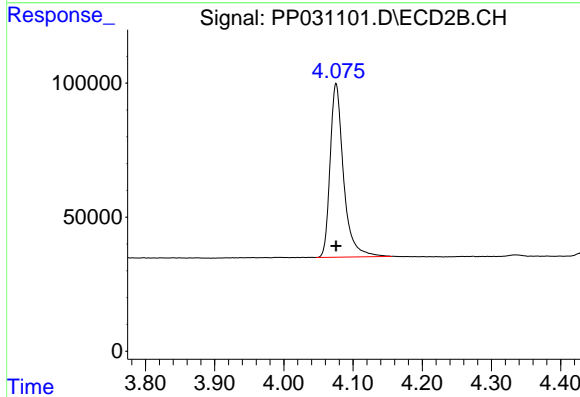
Volume Inj. : 2 µl
 Signal #1 Phase : ZB-MR1 Signal #2 Phase: ZB-MR2
 Signal #1 Info : 30Mx0.32mmx 0.50µ Signal #2 Info : 30M x 0.32mm x 0.25µm



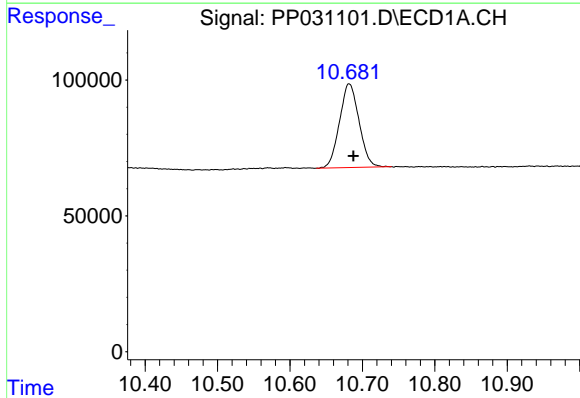


#1 Tetrachloro-m-xylene
 R.T.: 4.800 min
 Delta R.T.: 0.000 min
 Response: 914653
 Conc: 13.69 ng/ml

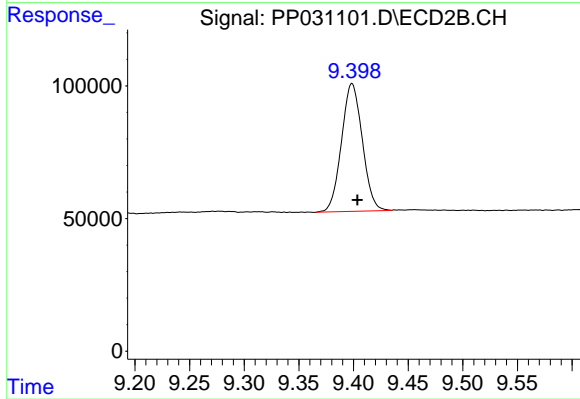
Instrument :
 ECD_P
ClientSampleId :
 LOD-MDL-WATER-01-QT4-2020



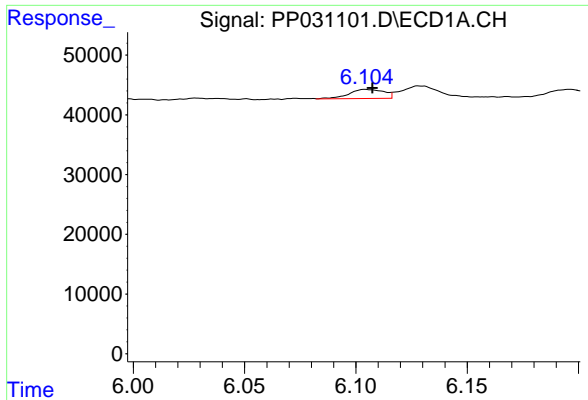
#1 Tetrachloro-m-xylene
 R.T.: 4.076 min
 Delta R.T.: 0.000 min
 Response: 873324
 Conc: 13.14 ng/ml



#2 Decachlorobiphenyl
 R.T.: 10.682 min
 Delta R.T.: -0.006 min
 Response: 576902
 Conc: 14.43 ng/ml

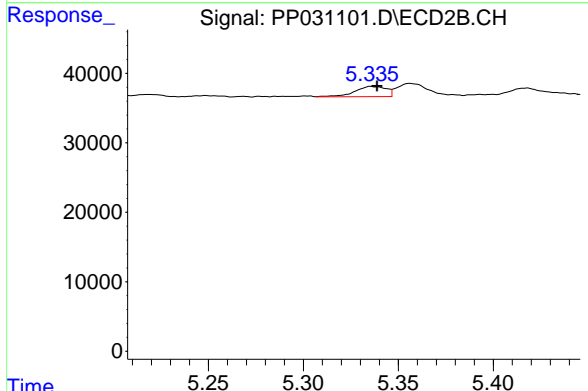


#2 Decachlorobiphenyl
 R.T.: 9.399 min
 Delta R.T.: -0.005 min
 Response: 638803
 Conc: 15.30 ng/ml

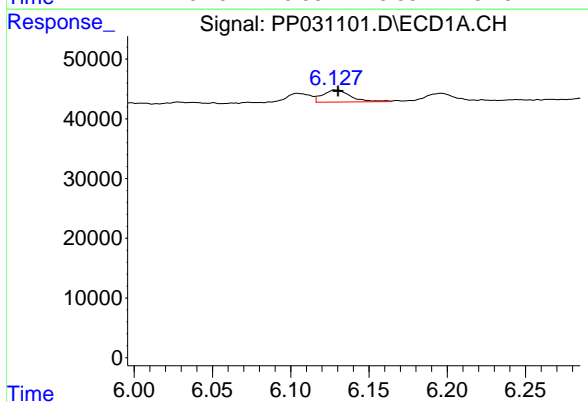


#3 AR-1016-1
 R.T.: 6.105 min
 Delta R.T.: -0.003 min
 Response: 16728
 Conc: 8.59 ng/ml

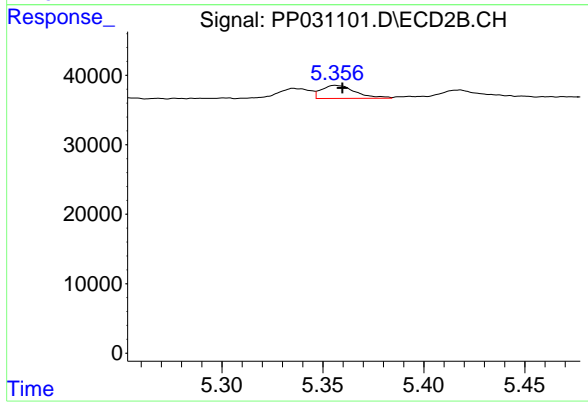
Instrument :
 ECD_P
ClientSampleId :
 LOD-MDL-WATER-01-QT4-2020



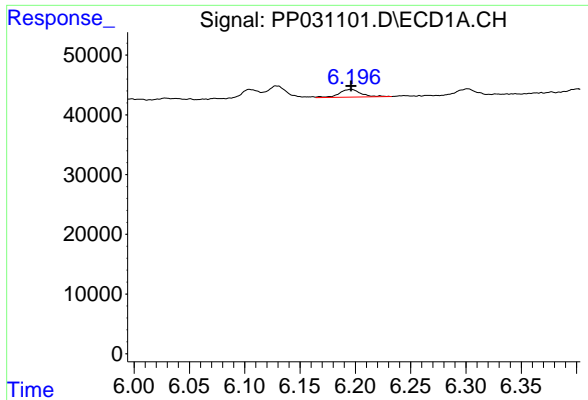
#3 AR-1016-1
 R.T.: 5.335 min
 Delta R.T.: -0.003 min
 Response: 17063
 Conc: 9.20 ng/ml



#4 AR-1016-2
 R.T.: 6.129 min
 Delta R.T.: -0.001 min
 Response: 25295
 Conc: 8.86 ng/ml

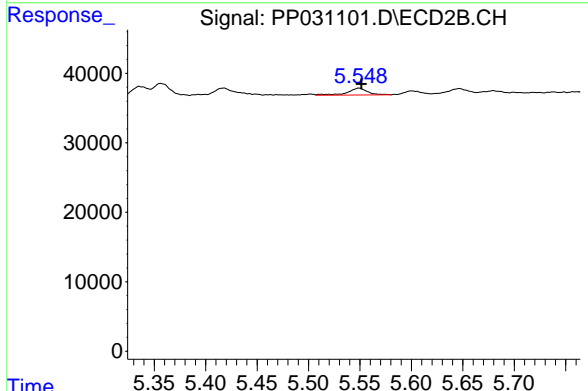


#4 AR-1016-2
 R.T.: 5.356 min
 Delta R.T.: -0.004 min
 Response: 22063
 Conc: 8.12 ng/ml

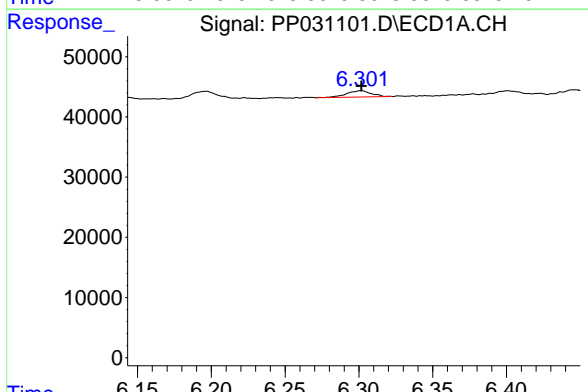


#5 AR-1016-3
 R.T.: 6.196 min
 Delta R.T.: 0.000 min
 Response: 17726
 Conc: 10.18 ng/ml

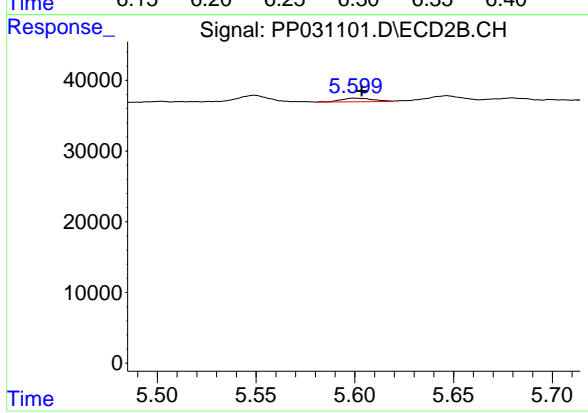
Instrument :
 ECD_P
ClientSampleId :
 LOD-MDL-WATER-01-QT4-2020



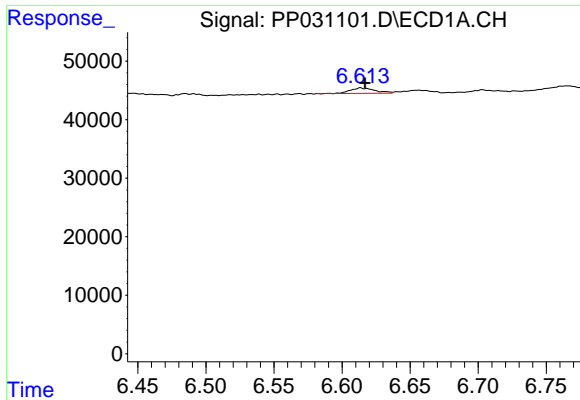
#5 AR-1016-3
 R.T.: 5.549 min
 Delta R.T.: -0.003 min
 Response: 13404
 Conc: 10.58 ng/ml



#6 AR-1016-4
 R.T.: 6.302 min
 Delta R.T.: 0.000 min
 Response: 12110
 Conc: 8.38 ng/ml



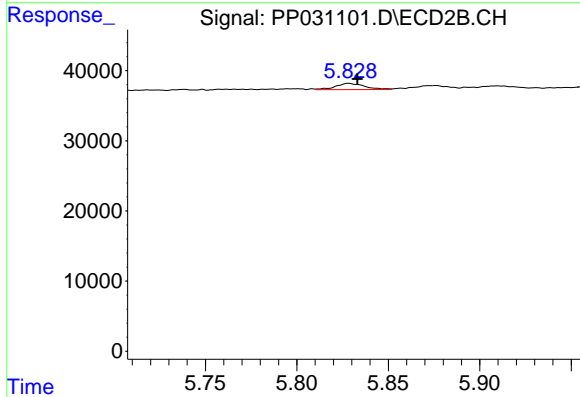
#6 AR-1016-4
 R.T.: 5.600 min
 Delta R.T.: -0.004 min
 Response: 5553
 Conc: 6.02 ng/ml



#7 AR-1016-5

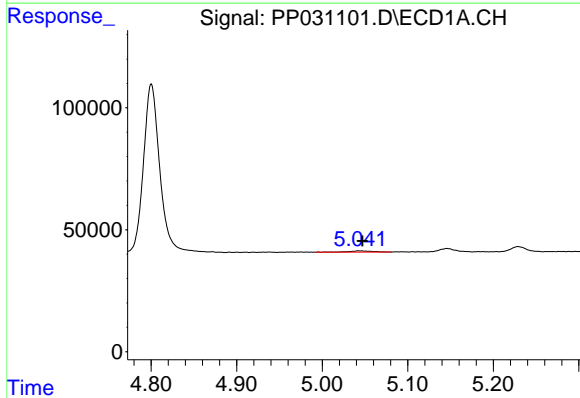
R.T.: 6.614 min
 Delta R.T.: -0.003 min
 Response: 11403
 Conc: 9.15 ng/ml

Instrument :
 ECD_P
 ClientSampleId :
 LOD-MDL-WATER-01-QT4-2020



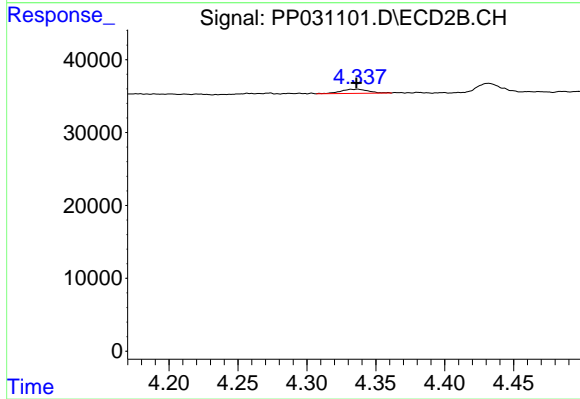
#7 AR-1016-5

R.T.: 5.828 min
 Delta R.T.: -0.005 min
 Response: 9945
 Conc: 7.58 ng/ml



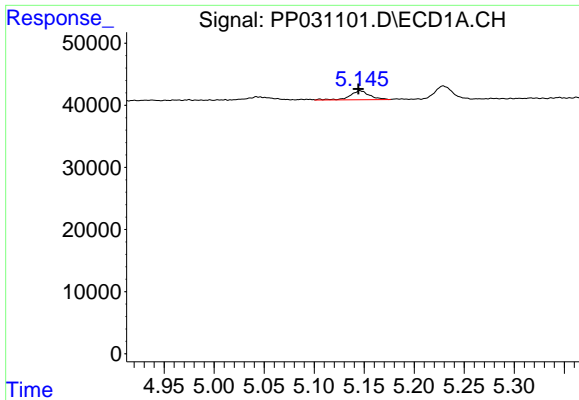
#8 AR-1221-1

R.T.: 5.043 min
 Delta R.T.: -0.004 min
 Response: 11398
 Conc: 18.87 ng/ml



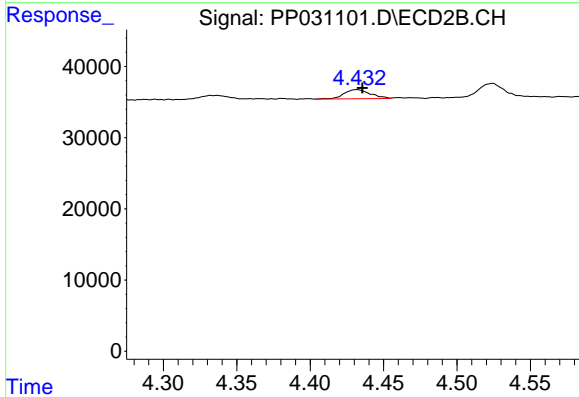
#8 AR-1221-1

R.T.: 4.337 min
 Delta R.T.: 0.000 min
 Response: 7797
 Conc: 13.84 ng/ml

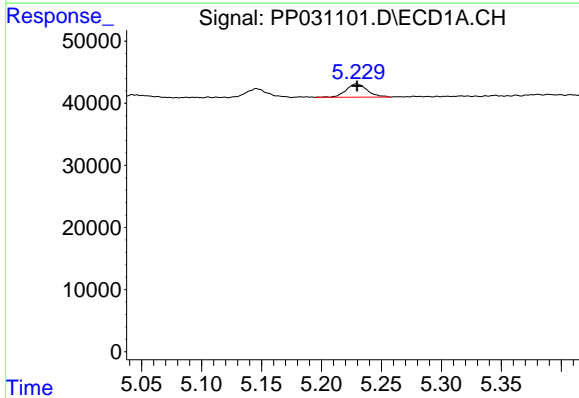


#9 AR-1221-2
 R.T.: 5.146 min
 Delta R.T.: 0.002 min
 Response: 19412
 Conc: 43.22 ng/ml

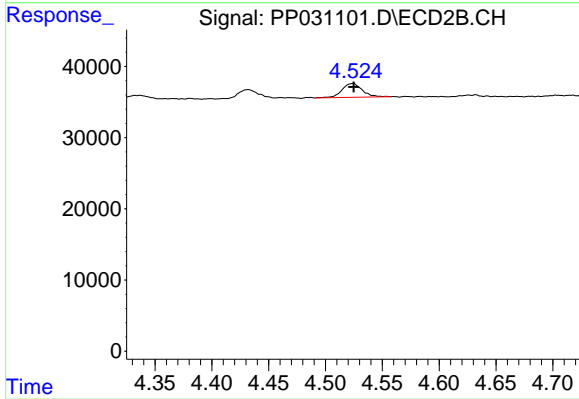
Instrument :
 ECD_P
ClientSampleId :
 LOD-MDL-WATER-01-QT4-2020



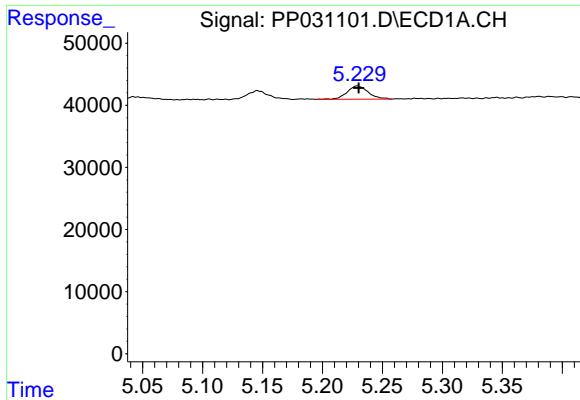
#9 AR-1221-2
 R.T.: 4.432 min
 Delta R.T.: -0.003 min
 Response: 16027
 Conc: 38.63 ng/ml



#10 AR-1221-3
 R.T.: 5.229 min
 Delta R.T.: 0.000 min
 Response: 26413
 Conc: 19.57 ng/ml

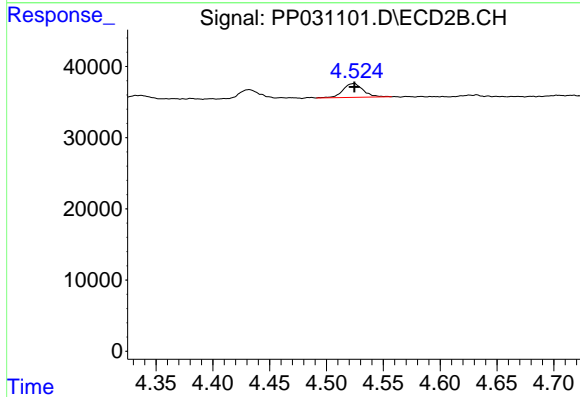


#10 AR-1221-3
 R.T.: 4.525 min
 Delta R.T.: 0.000 min
 Response: 24256
 Conc: 18.50 ng/ml

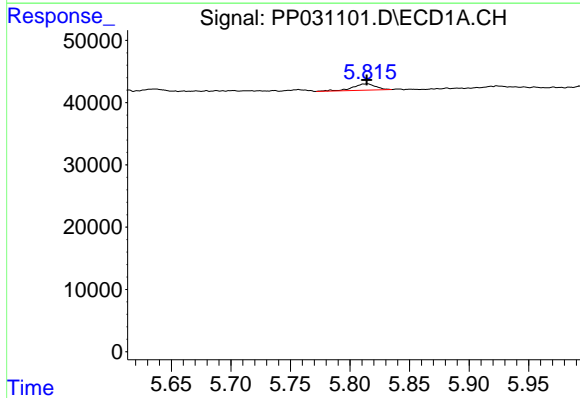


#11 AR-1232-1
 R.T.: 5.229 min
 Delta R.T.: -0.001 min
 Response: 26413
 Conc: 21.60 ng/ml

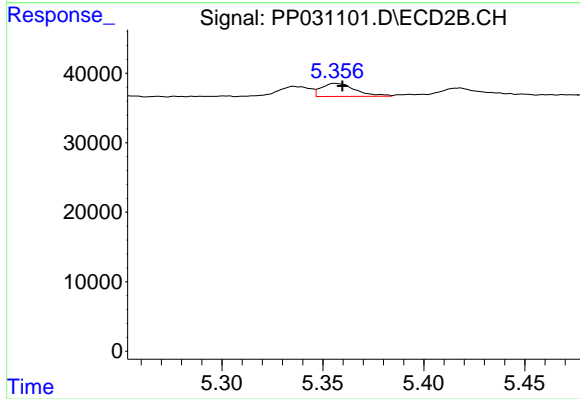
Instrument :
 ECD_P
ClientSampleId :
 LOD-MDL-WATER-01-QT4-2020



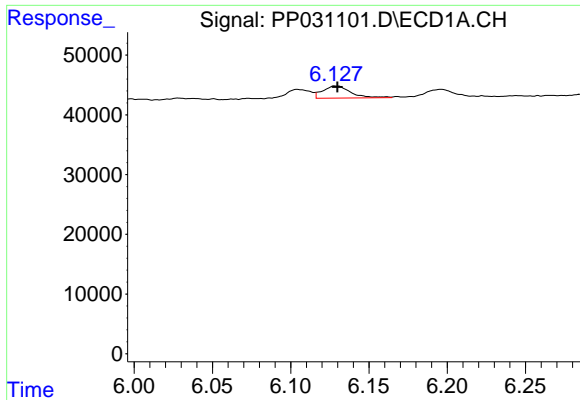
#11 AR-1232-1
 R.T.: 4.525 min
 Delta R.T.: 0.000 min
 Response: 24256
 Conc: 20.25 ng/ml



#12 AR-1232-2
 R.T.: 5.814 min
 Delta R.T.: 0.000 min
 Response: 13797
 Conc: 22.72 ng/ml

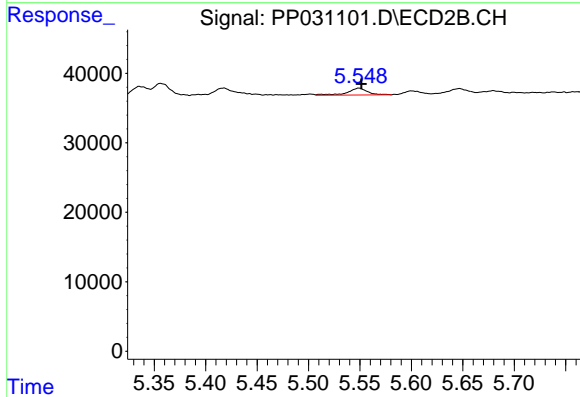


#12 AR-1232-2
 R.T.: 5.356 min
 Delta R.T.: -0.004 min
 Response: 22063
 Conc: 20.76 ng/ml

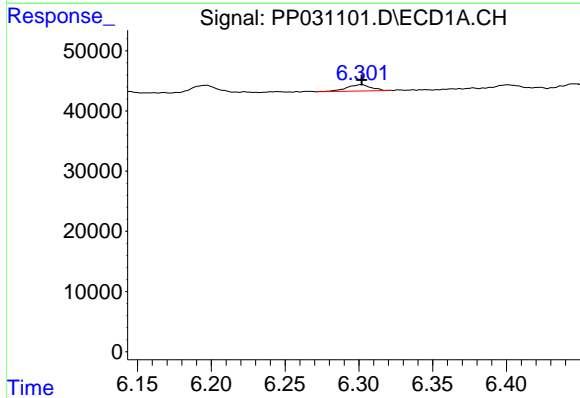


#13 AR-1232-3
 R.T.: 6.129 min
 Delta R.T.: 0.000 min
 Response: 25295
 Conc: 22.64 ng/ml

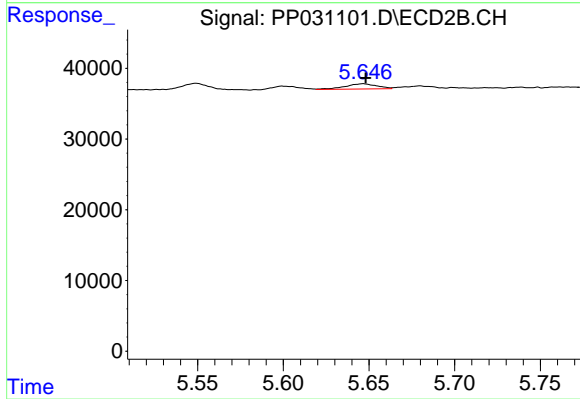
Instrument :
 ECD_P
ClientSampleId :
 LOD-MDL-WATER-01-QT4-2020



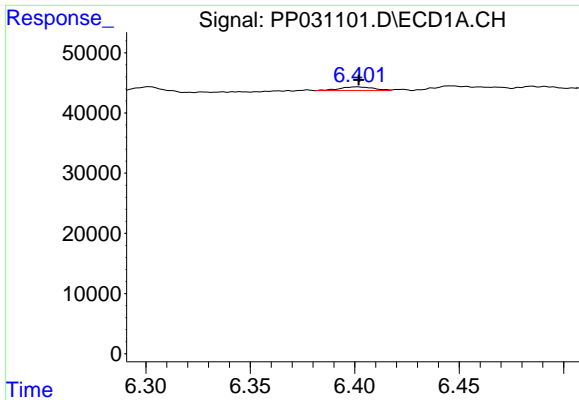
#13 AR-1232-3
 R.T.: 5.549 min
 Delta R.T.: -0.003 min
 Response: 13404
 Conc: 26.14 ng/ml



#14 AR-1232-4
 R.T.: 6.302 min
 Delta R.T.: 0.000 min
 Response: 12110
 Conc: 21.34 ng/ml

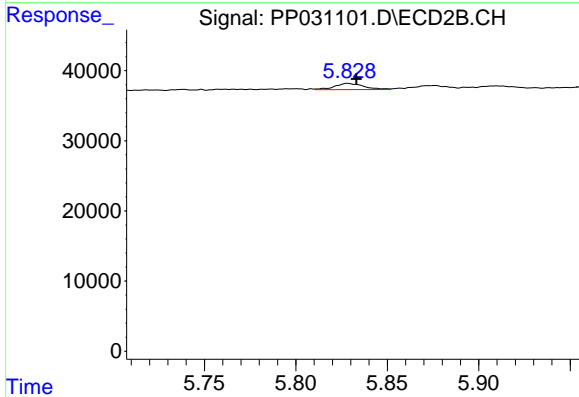


#14 AR-1232-4
 R.T.: 5.647 min
 Delta R.T.: -0.001 min
 Response: 9400
 Conc: 21.52 ng/ml

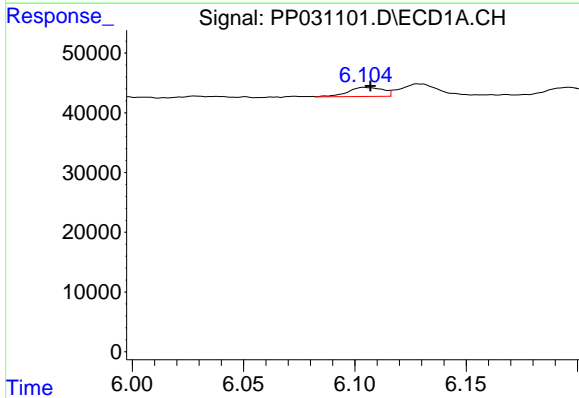


#15 AR-1232-5
 R.T.: 6.401 min
 Delta R.T.: 0.000 min
 Response: 7227
 Conc: 20.86 ng/ml

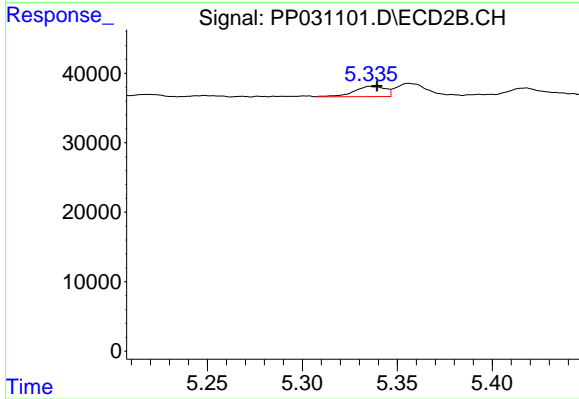
Instrument :
 ECD_P
ClientSampleId :
 LOD-MDL-WATER-01-QT4-2020



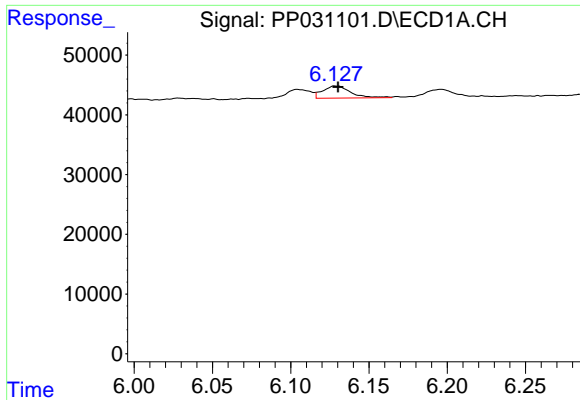
#15 AR-1232-5
 R.T.: 5.828 min
 Delta R.T.: -0.005 min
 Response: 9945
 Conc: 20.59 ng/ml



#16 AR-1242-1
 R.T.: 6.105 min
 Delta R.T.: -0.002 min
 Response: 16728
 Conc: 12.45 ng/ml

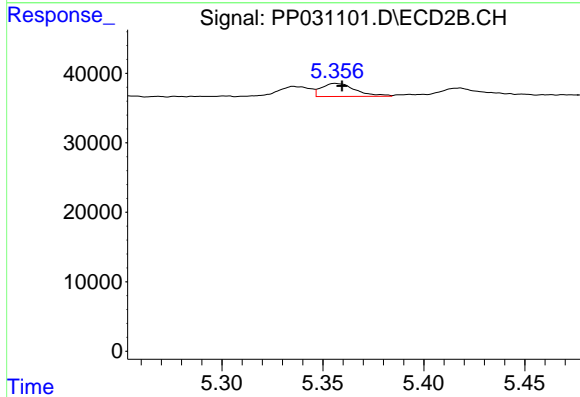


#16 AR-1242-1
 R.T.: 5.335 min
 Delta R.T.: -0.004 min
 Response: 17063
 Conc: 13.26 ng/ml

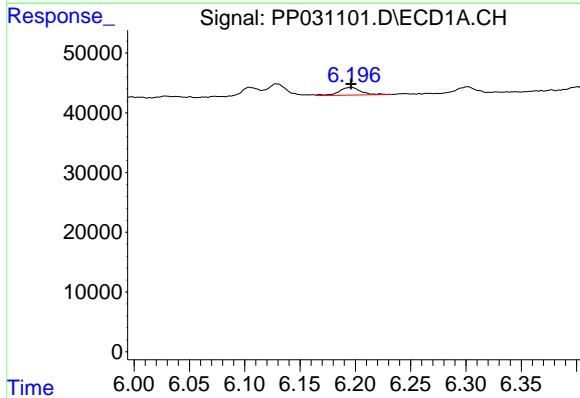


#17 AR-1242-2
 R.T.: 6.129 min
 Delta R.T.: -0.001 min
 Response: 25295
 Conc: 12.95 ng/ml

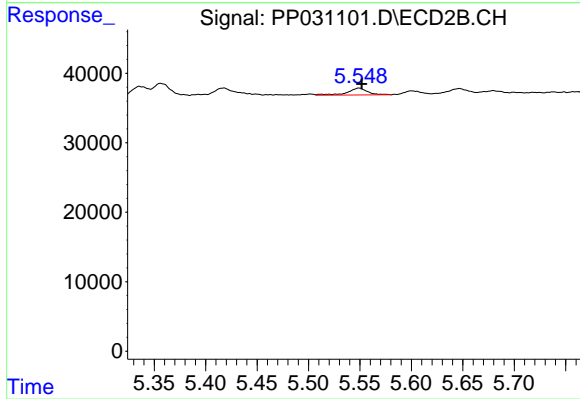
Instrument :
 ECD_P
 ClientSampleId :
 LOD-MDL-WATER-01-QT4-2020



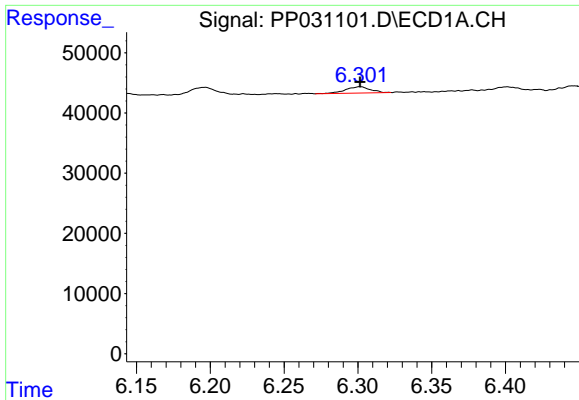
#17 AR-1242-2
 R.T.: 5.356 min
 Delta R.T.: -0.003 min
 Response: 22063
 Conc: 11.82 ng/ml



#18 AR-1242-3
 R.T.: 6.196 min
 Delta R.T.: 0.000 min
 Response: 17726
 Conc: 14.53 ng/ml

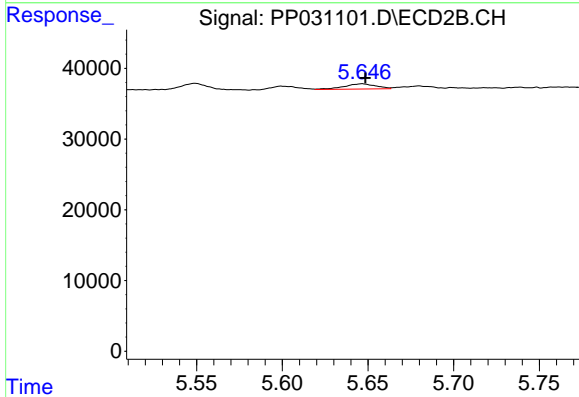


#18 AR-1242-3
 R.T.: 5.549 min
 Delta R.T.: -0.003 min
 Response: 13404
 Conc: 14.28 ng/ml

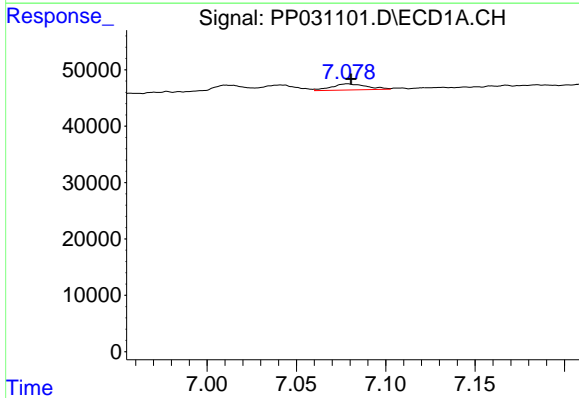


#19 AR-1242-4
 R.T.: 6.302 min
 Delta R.T.: 0.000 min
 Response: 12110
 Conc: 11.95 ng/ml

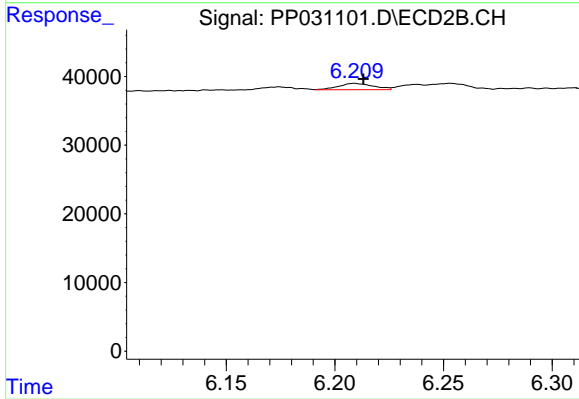
Instrument :
 ECD_P
ClientSampleId :
 LOD-MDL-WATER-01-QT4-2020



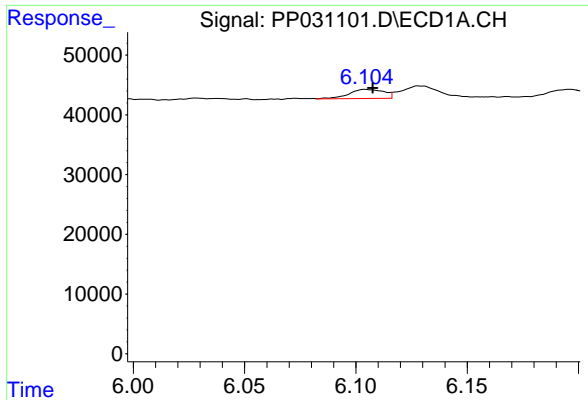
#19 AR-1242-4
 R.T.: 5.647 min
 Delta R.T.: -0.002 min
 Response: 9400
 Conc: 10.84 ng/ml



#20 AR-1242-5
 R.T.: 7.078 min
 Delta R.T.: -0.002 min
 Response: 14810
 Conc: 15.52 ng/ml

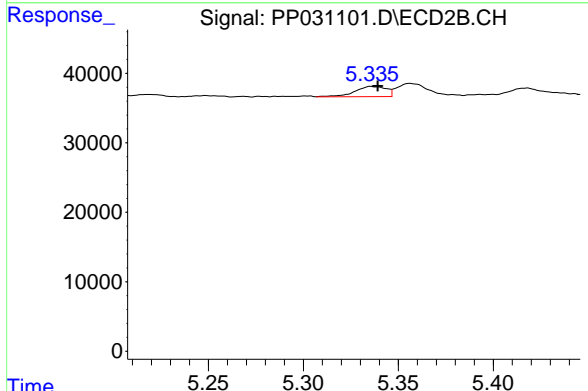


#20 AR-1242-5
 R.T.: 6.209 min
 Delta R.T.: -0.004 min
 Response: 10245
 Conc: 10.29 ng/ml

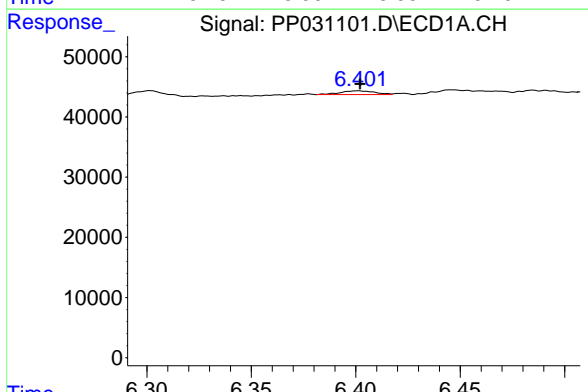


#21 AR-1248-1
 R.T.: 6.105 min
 Delta R.T.: -0.003 min
 Response: 16728
 Conc: 17.35 ng/ml

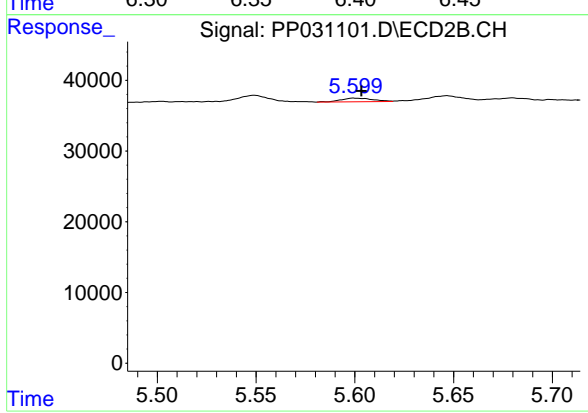
Instrument :
 ECD_P
ClientSampleId :
 LOD-MDL-WATER-01-QT4-2020



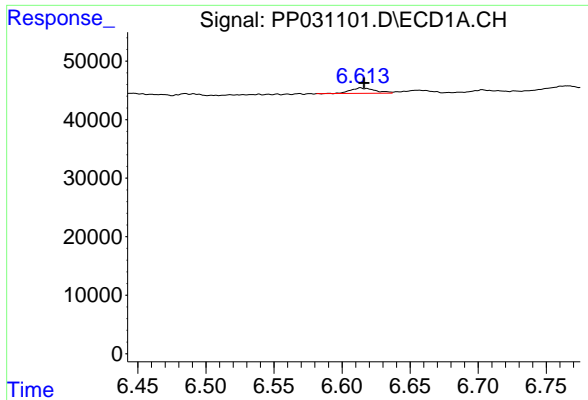
#21 AR-1248-1
 R.T.: 5.335 min
 Delta R.T.: -0.004 min
 Response: 17063
 Conc: 18.44 ng/ml



#22 AR-1248-2
 R.T.: 6.401 min
 Delta R.T.: 0.000 min
 Response: 7227
 Conc: 6.25 ng/ml



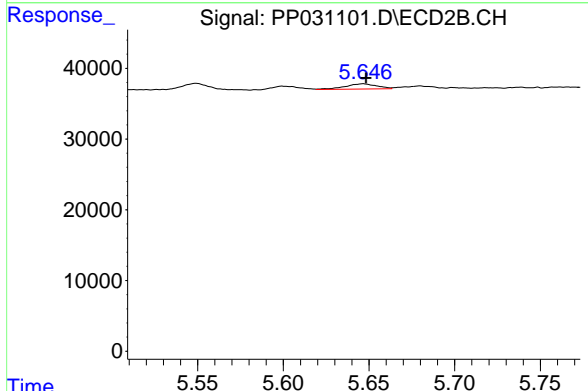
#22 AR-1248-2
 R.T.: 5.600 min
 Delta R.T.: -0.004 min
 Response: 5553
 Conc: 5.04 ng/ml



#23 AR-1248-3

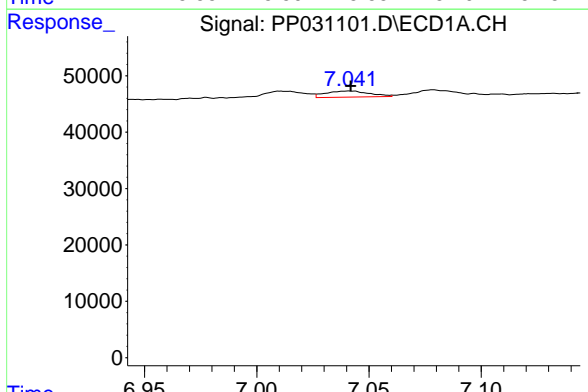
R.T.: 6.614 min
 Delta R.T.: -0.002 min
 Response: 11403
 Conc: 8.01 ng/ml

Instrument :
 ECD_P
ClientSampleId :
 LOD-MDL-WATER-01-QT4-2020



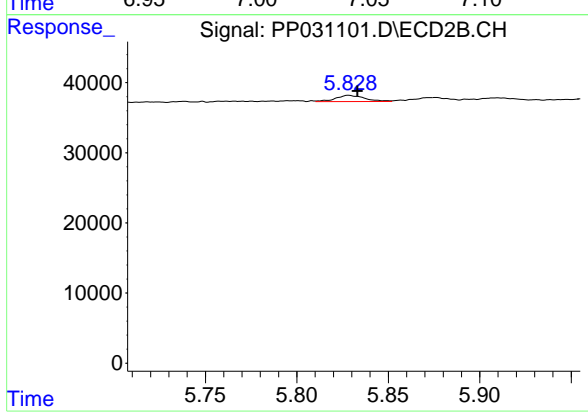
#23 AR-1248-3

R.T.: 5.647 min
 Delta R.T.: -0.002 min
 Response: 9400
 Conc: 7.77 ng/ml



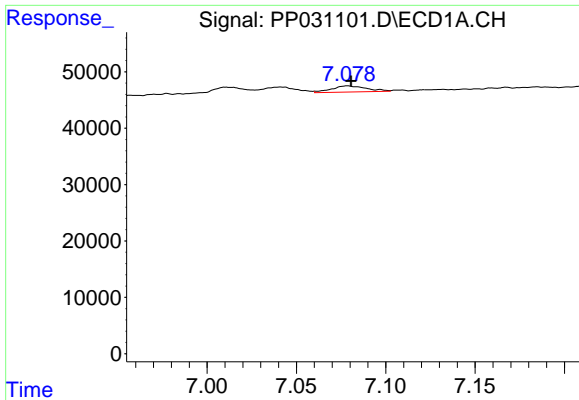
#24 AR-1248-4

R.T.: 7.041 min
 Delta R.T.: 0.000 min
 Response: 14912
 Conc: 9.78 ng/ml



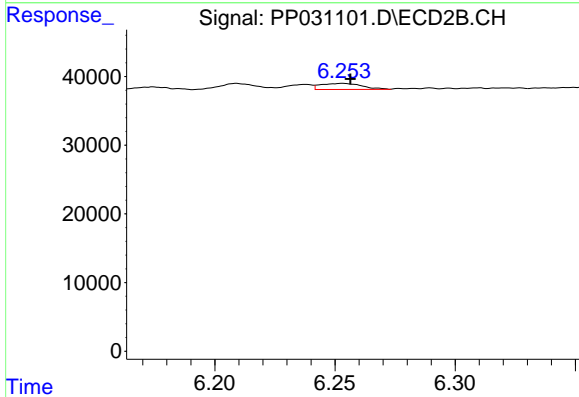
#24 AR-1248-4

R.T.: 5.828 min
 Delta R.T.: -0.005 min
 Response: 9945
 Conc: 6.74 ng/ml

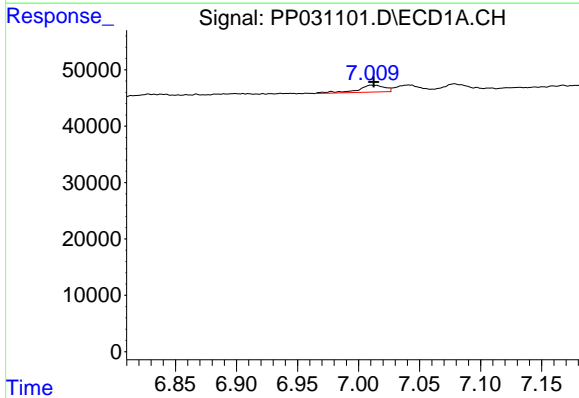


#25 AR-1248-5
 R.T.: 7.078 min
 Delta R.T.: -0.002 min
 Response: 14810
 Conc: 9.76 ng/ml

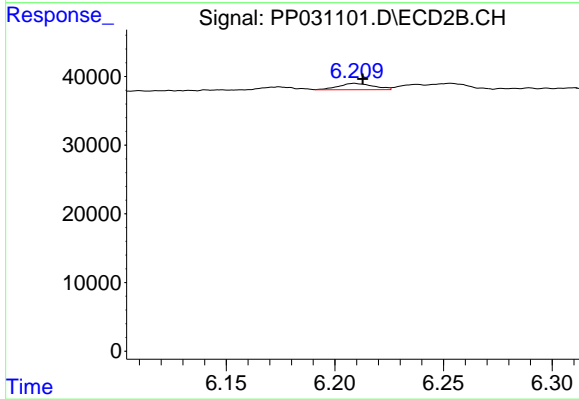
Instrument :
 ECD_P
ClientSampleId :
 LOD-MDL-WATER-01-QT4-2020



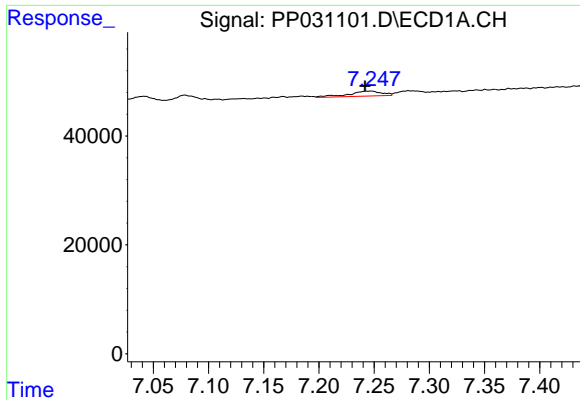
#25 AR-1248-5
 R.T.: 6.253 min
 Delta R.T.: -0.003 min
 Response: 10424
 Conc: 8.25 ng/ml



#26 AR-1254-1
 R.T.: 7.011 min
 Delta R.T.: -0.001 min
 Response: 19306
 Conc: 13.75 ng/ml



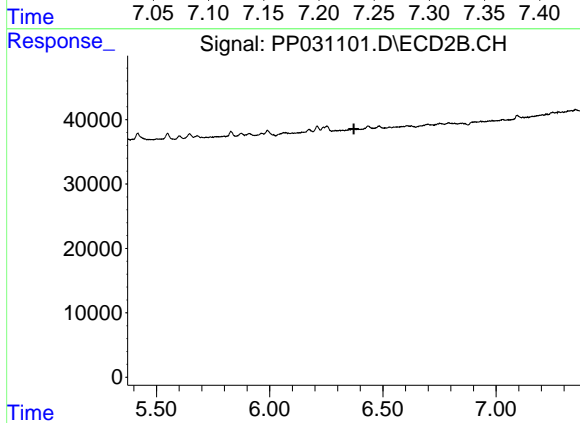
#26 AR-1254-1
 R.T.: 6.209 min
 Delta R.T.: -0.004 min
 Response: 10245
 Conc: 5.21 ng/ml



#27 AR-1254-2

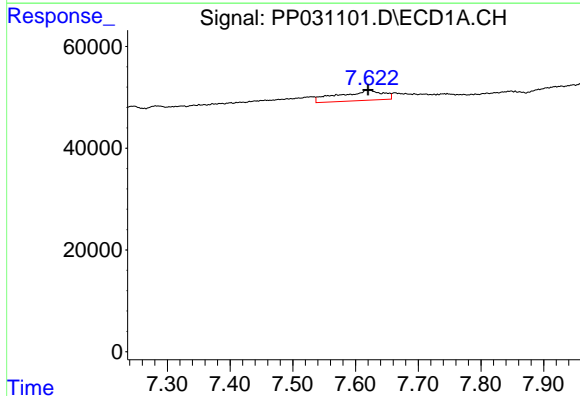
R.T.: 7.247 min
 Delta R.T.: 0.005 min
 Response: 19339
 Conc: 9.28 ng/ml

Instrument :
 ECD_P
ClientSampled :
 LOD-MDL-WATER-01-QT4-2020



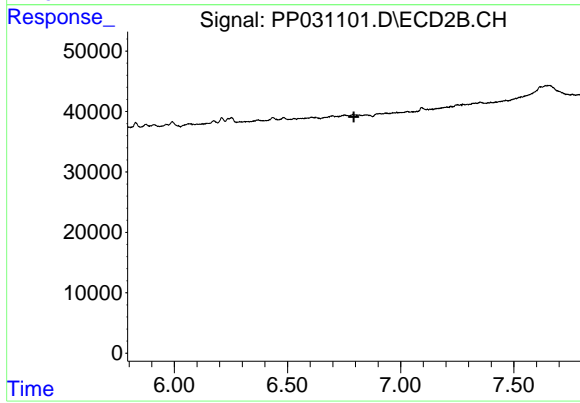
#27 AR-1254-2

R.T.: 0.000 min
 Exp R.T. : 6.372 min
 Response: 0
 Conc: N.D.



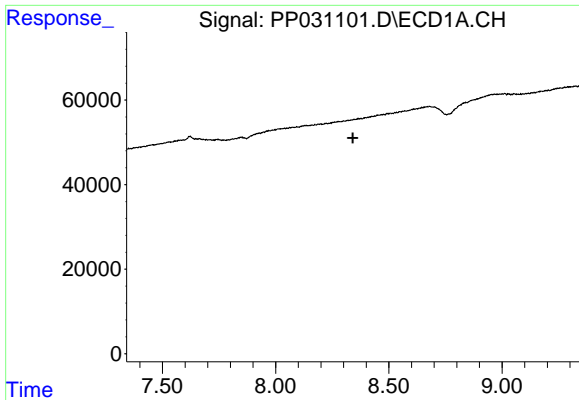
#28 AR-1254-3

R.T.: 7.623 min
 Delta R.T.: 0.003 min
 Response: 98521
 Conc: 42.69 ng/ml



#28 AR-1254-3

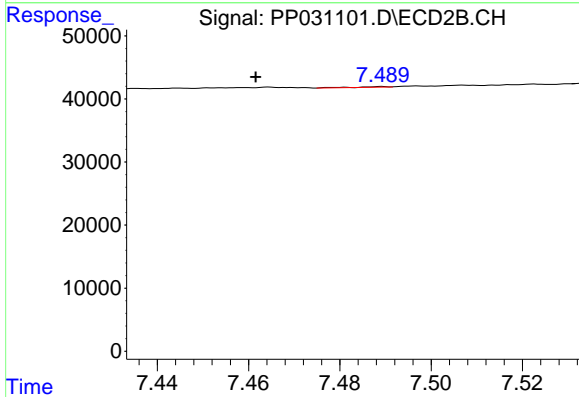
R.T.: 0.000 min
 Exp R.T. : 6.793 min
 Response: 0
 Conc: N.D.



#30 AR-1254-5

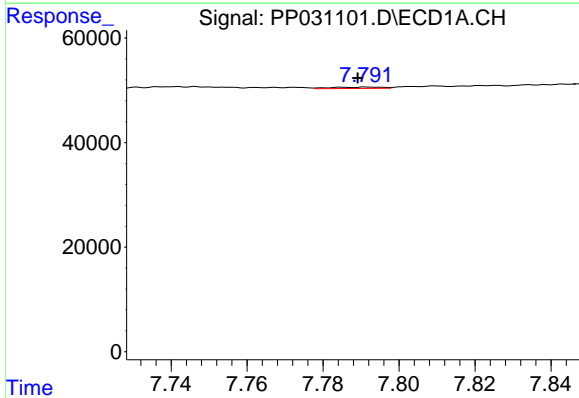
R.T.: 0.000 min
 Exp R.T.: 8.341 min
 Response: 0
 Conc: N.D.

Instrument :
 ECD_P
ClientSampled :
 LOD-MDL-WATER-01-QT4-2020



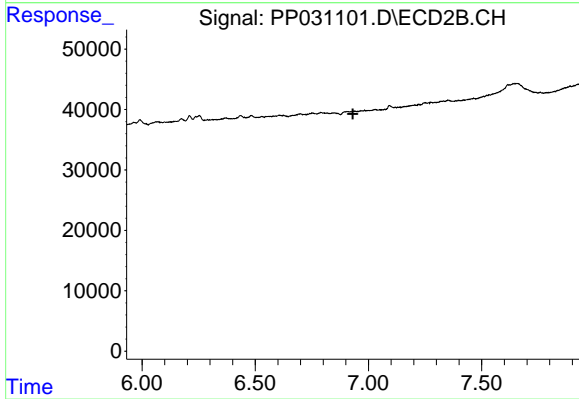
#30 AR-1254-5

R.T.: 7.489 min
 Delta R.T.: 0.028 min
 Response: 544
 Conc: 0.25 ng/ml



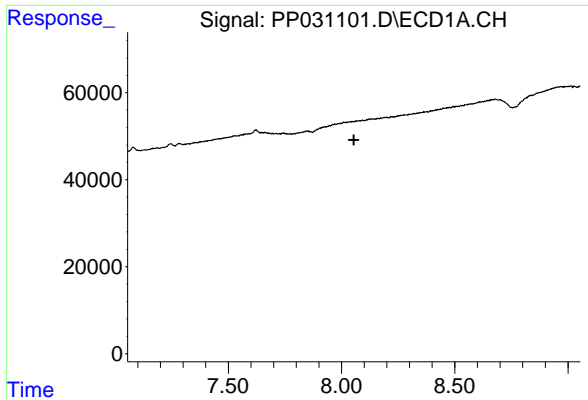
#31 AR-1260-1

R.T.: 7.792 min
 Delta R.T.: 0.003 min
 Response: 2386
 Conc: 1.30 ng/ml



#31 AR-1260-1

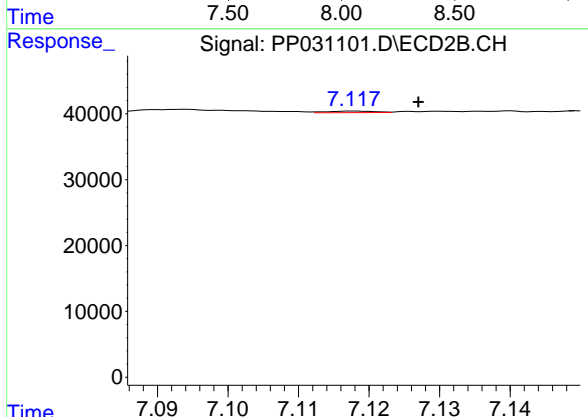
R.T.: 0.000 min
 Exp R.T.: 6.931 min
 Response: 0
 Conc: N.D.



#32 AR-1260-2

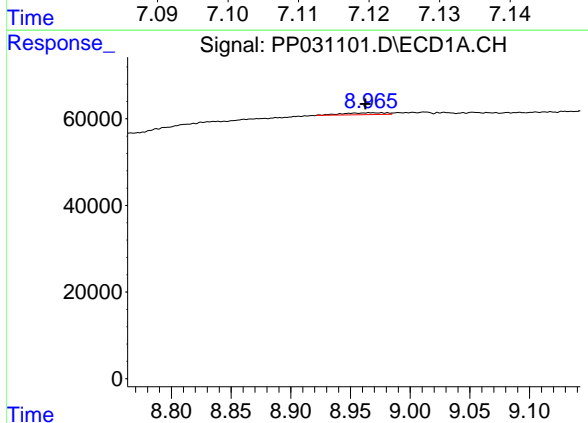
R.T.: 0.000 min
 Exp R.T.: 8.054 min
 Response: 0
 Conc: N.D.

Instrument :
 ECD_P
 ClientSampleId :
 LOD-MDL-WATER-01-QT4-2020



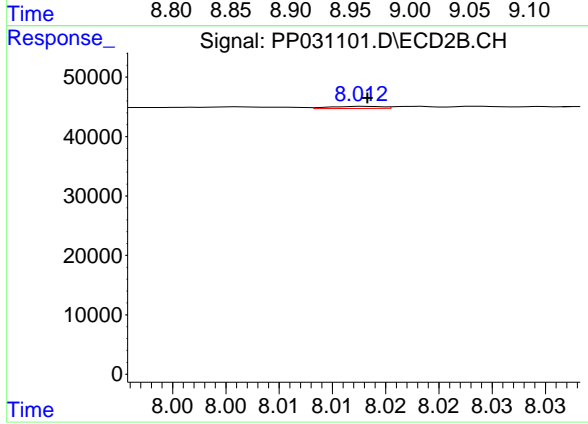
#32 AR-1260-2

R.T.: 7.118 min
 Delta R.T.: -0.009 min
 Response: 1062
 Conc: 0.45 ng/ml



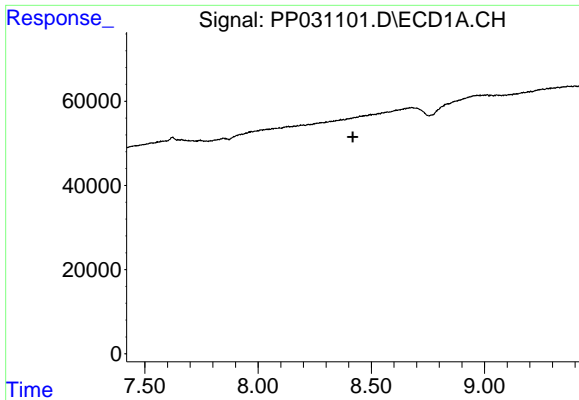
#35 AR-1260-5

R.T.: 8.966 min
 Delta R.T.: 0.004 min
 Response: 11427
 Conc: 3.03 ng/ml



#35 AR-1260-5

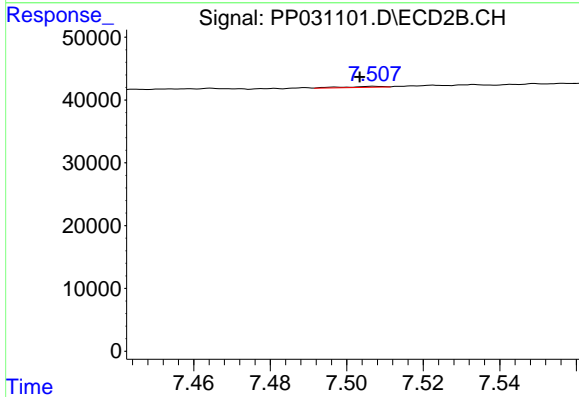
R.T.: 8.013 min
 Delta R.T.: 0.000 min
 Response: 1211
 Conc: 0.27 ng/ml



#36 AR-1262-1

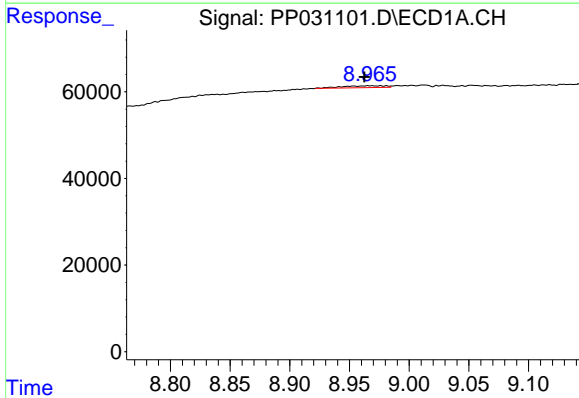
R.T.: 0.000 min
 Exp R.T.: 8.419 min
 Response: 0
 Conc: N.D.

Instrument :
 ECD_P
 ClientSampleId :
 LOD-MDL-WATER-01-QT4-2020



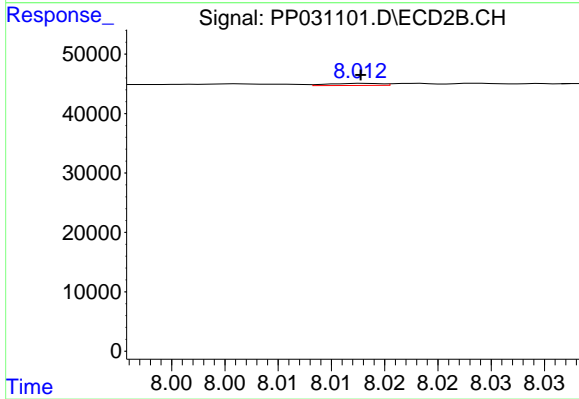
#36 AR-1262-1

R.T.: 7.507 min
 Delta R.T.: 0.004 min
 Response: 1070
 Conc: 0.46 ng/ml



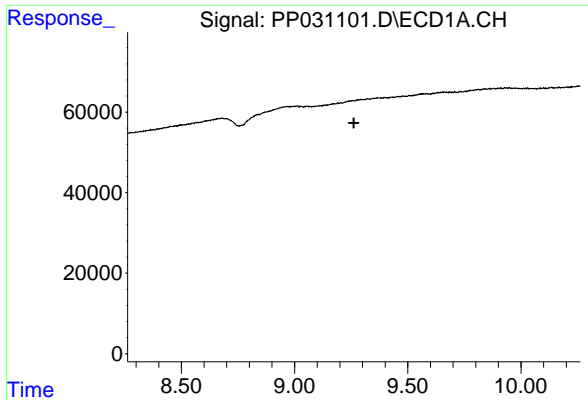
#37 AR-1262-2

R.T.: 8.966 min
 Delta R.T.: 0.004 min
 Response: 11427
 Conc: 3.14 ng/ml



#37 AR-1262-2

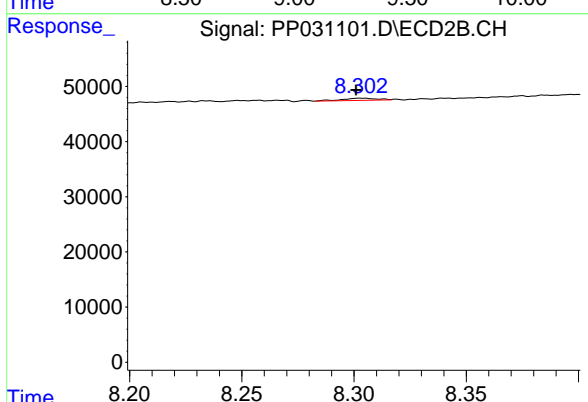
R.T.: 8.013 min
 Delta R.T.: 0.000 min
 Response: 1211
 Conc: 0.29 ng/ml



#38 AR-1262-3

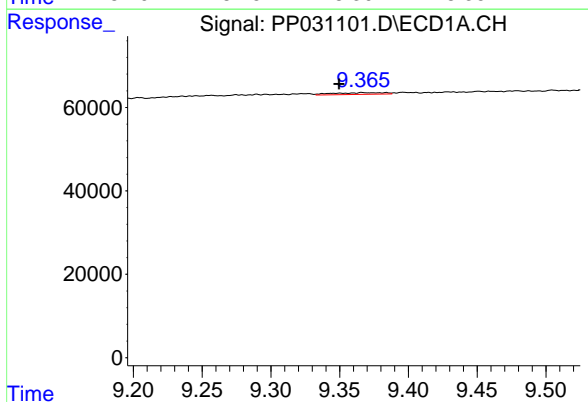
R.T.: 0.000 min
 Exp R.T.: 9.262 min
 Response: 0
 Conc: N.D.

Instrument :
 ECD_P
ClientSampled :
 LOD-MDL-WATER-01-QT4-2020



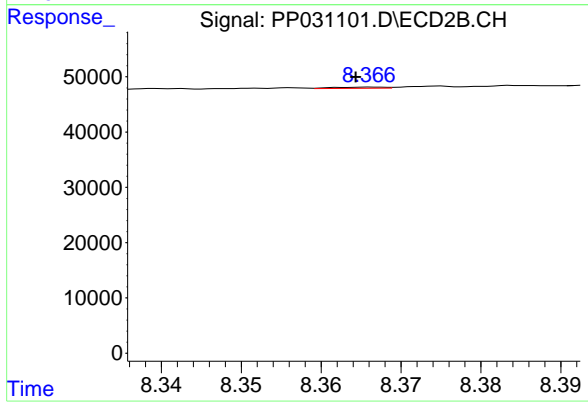
#38 AR-1262-3

R.T.: 8.303 min
 Delta R.T.: 0.002 min
 Response: 4257
 Conc: 2.51 ng/ml



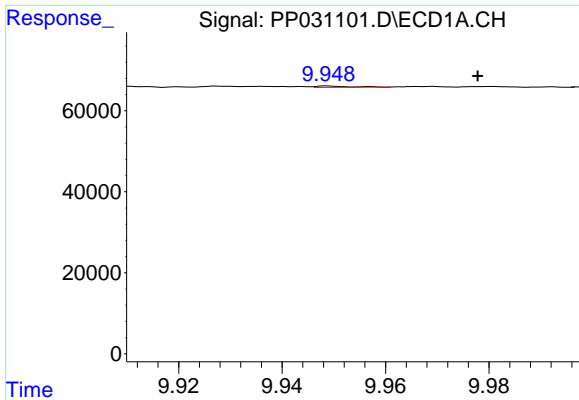
#39 AR-1262-4

R.T.: 9.366 min
 Delta R.T.: 0.017 min
 Response: 10795
 Conc: 5.24 ng/ml



#39 AR-1262-4

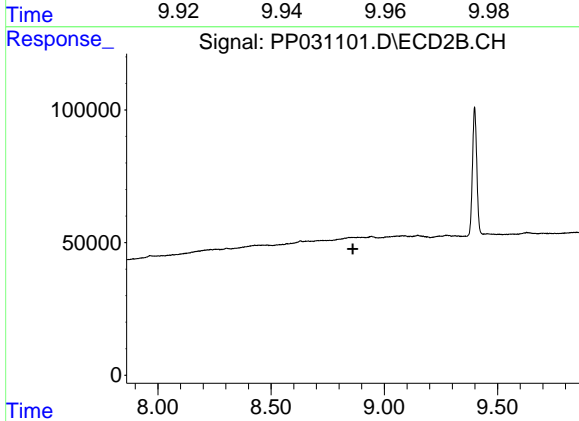
R.T.: 8.366 min
 Delta R.T.: 0.002 min
 Response: 975
 Conc: 0.31 ng/ml



#40 AR-1262-5

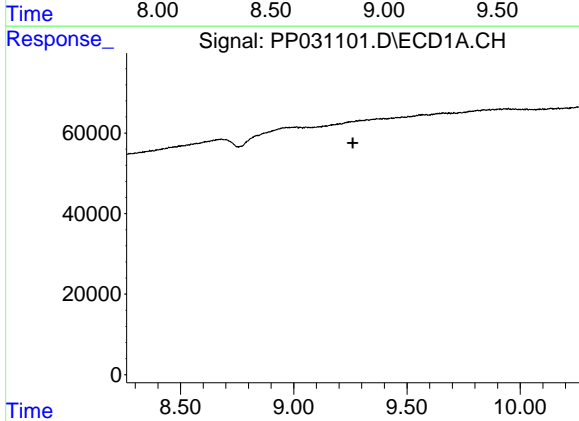
R.T.: 9.949 min
 Delta R.T.: -0.029 min
 Response: 1414
 Conc: 1.00 ng/ml

Instrument :
 ECD_P
ClientSampled :
 LOD-MDL-WATER-01-QT4-2020



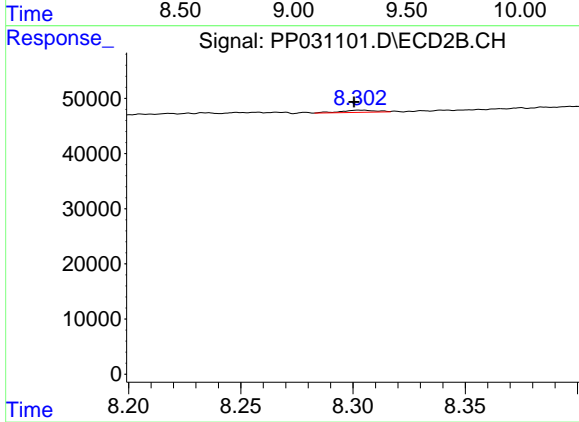
#40 AR-1262-5

R.T.: 0.000 min
 Exp R.T. : 8.861 min
 Response: 0
 Conc: N.D.



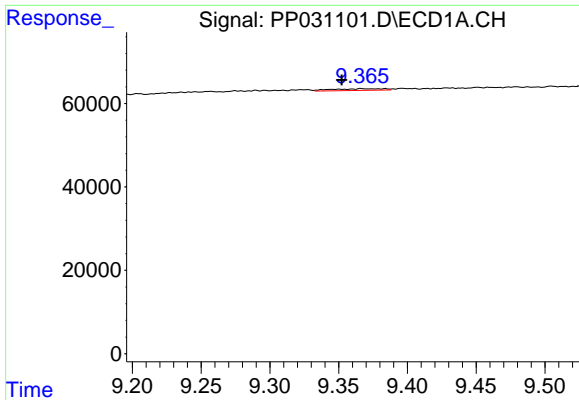
#41 AR-1268-1

R.T.: 0.000 min
 Exp R.T. : 9.261 min
 Response: 0
 Conc: N.D.



#41 AR-1268-1

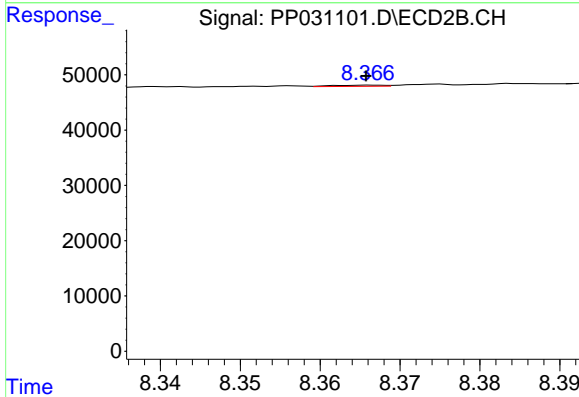
R.T.: 8.303 min
 Delta R.T.: 0.002 min
 Response: 4257
 Conc: 0.87 ng/ml



#42 AR-1268-2

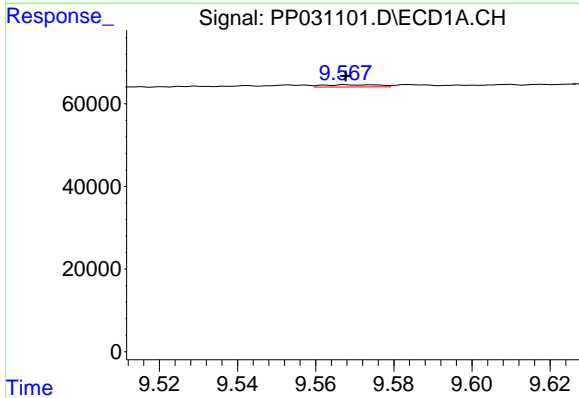
R.T.: 9.366 min
 Delta R.T.: 0.014 min
 Response: 10795
 Conc: 2.51 ng/ml

Instrument :
 ECD_P
ClientSampleId :
 LOD-MDL-WATER-01-QT4-2020



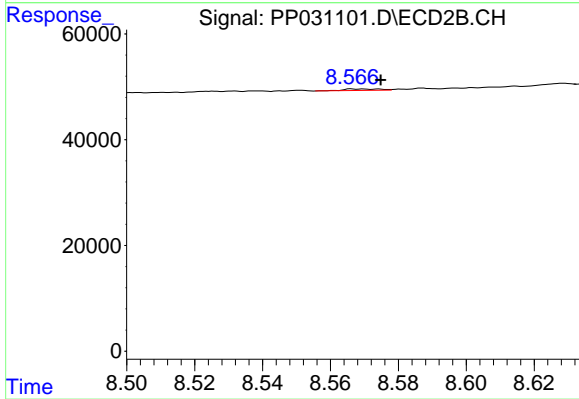
#42 AR-1268-2

R.T.: 8.366 min
 Delta R.T.: 0.000 min
 Response: 975
 Conc: 0.21 ng/ml



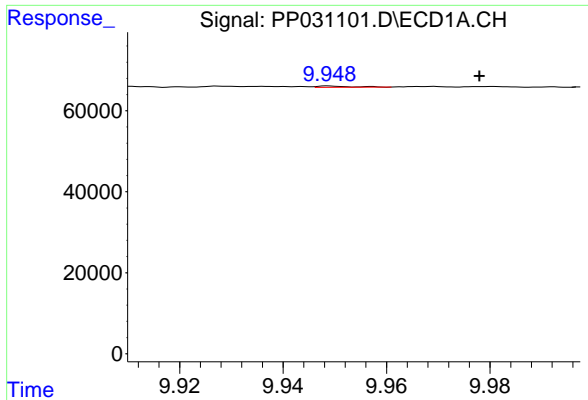
#43 AR-1268-3

R.T.: 9.568 min
 Delta R.T.: 0.000 min
 Response: 5346
 Conc: 1.48 ng/ml



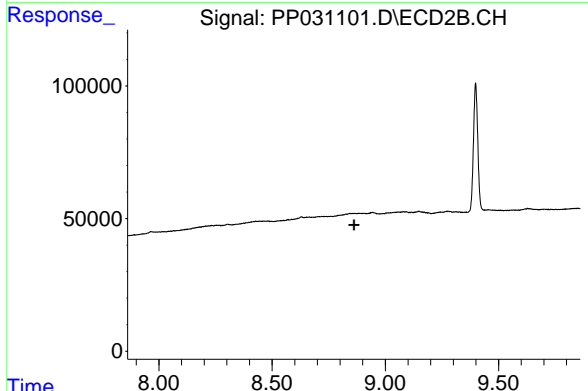
#43 AR-1268-3

R.T.: 8.566 min
 Delta R.T.: -0.009 min
 Response: 2087
 Conc: 0.52 ng/ml

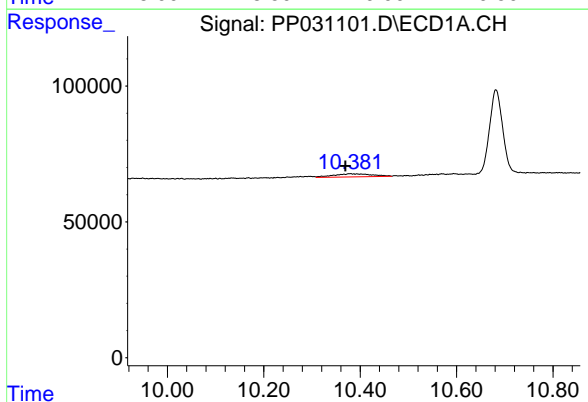


#44 AR-1268-4
 R.T.: 9.949 min
 Delta R.T.: -0.029 min
 Response: 1414
 Conc: 0.89 ng/ml

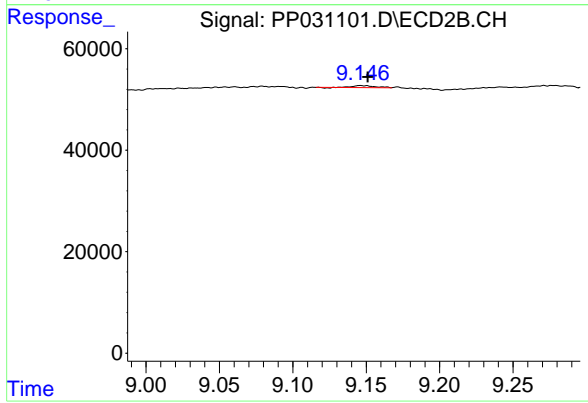
Instrument :
 ECD_P
ClientSampled :
 LOD-MDL-WATER-01-QT4-2020



#44 AR-1268-4
 R.T.: 0.000 min
 Exp R.T. : 8.862 min
 Response: 0
 Conc: N.D.



#45 AR-1268-5
 R.T.: 10.380 min
 Delta R.T.: 0.011 min
 Response: 61889
 Conc: 5.18 ng/ml



#45 AR-1268-5
 R.T.: 9.146 min
 Delta R.T.: -0.005 min
 Response: 4187
 Conc: 0.31 ng/ml