

Data Path : Z:\pestpcbsrv\HPCHEM1\ECD_P\Data\PP110420\
 Data File : PP031112.D
 Signal(s) : Signal #1: ECD1A.CH Signal #2: ECD2B.CH
 Acq On : 04 Nov 2020 16:44
 Operator : DD\AJ
 Sample : L4214-02
 Misc : AR1232 LOQ 50 PPB
 ALS Vial : 25 Sample Multiplier: 1

Instrument :
 ECD_P
 ClientSampleId :
 LOQ-SOIL-02-QT4-2020

Integration File signal 1: autoint1.e
 Integration File signal 2: autoint2.e
 Quant Time: Nov 05 05:05:09 2020
 Quant Method : Z:\pestpcbsrv\HPCHEM1\ECD_P\methods\PP110420.M
 Quant Title : GC EXTRACTABLES
 QLast Update : Wed Nov 04 08:24:38 2020
 Response via : Initial Calibration
 Integrator: ChemStation 6890 Scale Mode: Small noise peaks clipped

Volume Inj. : 2 µl
 Signal #1 Phase : ZB-MR1 Signal #2 Phase: ZB-MR2
 Signal #1 Info : 30Mx0.32mmx 0.50µ Signal #2 Info : 30M x 0.32mm x 0.25µm

Compound	RT#1	RT#2	Resp#1	Resp#2	ng/ml	ng/ml
System Monitoring Compounds						
1) SA Tetrachlo...	4.800	4.075	972896	929125	14.566	13.978
2) SA Decachlor...	10.681	9.398	635381	699754	15.891	16.758
Target Compounds						
3) L1 AR-1016-1	6.105	5.336	35861	30648	18.418	16.520
4) L1 AR-1016-2	6.128	5.356	54259	44363	19.007	16.321
5) L1 AR-1016-3	6.194	5.548	32241	23761	18.510	18.760
6) L1 AR-1016-4	6.299	5.601	23815	13071	16.481	14.173
7) L1 AR-1016-5	6.614	5.830	24501	19477	19.655	14.839
8) L2 AR-1221-1	5.046	4.335	20582	19558	34.083	34.726
9) L2 AR-1221-2	5.144	4.433	27368	23712	60.931	57.154
10) L2 AR-1221-3	5.229	4.522	56072	49913	41.545	38.060
11) L3 AR-1232-1	5.229	4.522	56072	49913	45.848	41.668
12) L3 AR-1232-2	5.812	5.356	28019	44363	46.142	41.745
13) L3 AR-1232-3	6.128	5.548	54259	23761	48.570	46.345
14) L3 AR-1232-4	6.299	5.644	23815	18055	41.960	41.339
15) L3 AR-1232-5	6.400	5.830	13047	19477	37.653	40.333
16) L4 AR-1242-1	6.105	5.336	35861	30648	26.692	23.815
17) L4 AR-1242-2	6.128	5.356	54259	44363	27.782	23.757
18) L4 AR-1242-3	6.194	5.548	32241	23761	26.436	25.309
19) L4 AR-1242-4	6.299	5.644	23815	18055	23.506	20.820
20) L4 AR-1242-5	7.078	6.209	22831	23565	23.925	23.671
21) L5 AR-1248-1	6.105	5.336	35861	30648	37.188	33.123
22) L5 AR-1248-2	6.400	5.601	13047	13071	11.281	11.860
23) L5 AR-1248-3	6.614	5.644	24501	18055	17.221	14.917
24) L5 AR-1248-4	7.040	5.830	22551	19477	14.796	13.197
25) L5 AR-1248-5	7.078	6.253	22831	25147	15.049	19.911 #
26) L6 AR-1254-1	7.011	6.209	20027	23565	14.264	11.982
27) L6 AR-1254-2	7.242	6.369	20562	4301	9.864	2.617 #
28) L6 AR-1254-3	7.620	6.790	90017	5540	39.001	2.023 #
29) L6 AR-1254-4	0.000	7.028	0	3177	N.D.	1.969 #
30) L6 AR-1254-5	0.000	7.464	0	488	N.D.	0.223 #
31) L7 AR-1260-1	7.788	0.000	4513	0	2.457	N.D. #
35) L7 AR-1260-5	0.000	8.014	0	3233	N.D.	0.718 #
37) L8 AR-1262-2	0.000	8.014	0	3233	N.D.	0.780 #
38) L8 AR-1262-3	0.000	8.301	0	3611	N.D.	2.130 #
39) L8 AR-1262-4	0.000	8.366	0	1767	N.D.	0.556 #
40) L8 AR-1262-5	9.997f	0.000	69518	0	49.076	N.D. #
41) L9 AR-1268-1	0.000	8.301	0	3611	N.D.	0.738 #
42) L9 AR-1268-2	0.000	8.366	0	1767	N.D.	0.371 #
43) L9 AR-1268-3	0.000	8.576	0	1551	N.D.	0.388 #
44) L9 AR-1268-4	9.997f	0.000	69518	0	43.891	N.D. #
45) L9 AR-1268-5	10.388f	9.148	70063	3904	5.859	0.291 #

Data Path : Z:\pestpcbsrv\HPCHEM1\ECD_P\Data\PP110420\
 Data File : PP031112.D
 Signal(s) : Signal #1: ECD1A.CH Signal #2: ECD2B.CH
 Acq On : 04 Nov 2020 16:44
 Operator : DD\AJ
 Sample : L4214-02
 Misc : AR1232 LOQ 50 PPB
 ALS Vial : 25 Sample Multiplier: 1

Instrument :
 ECD_P
ClientSampleId :
 LOQ-SOIL-02-QT4-2020

Integration File signal 1: autoint1.e
 Integration File signal 2: autoint2.e
 Quant Time: Nov 05 05:05:09 2020
 Quant Method : Z:\pestpcbsrv\HPCHEM1\ECD_P\methods\PP110420.M
 Quant Title : GC EXTRACTABLES
 QLast Update : Wed Nov 04 08:24:38 2020
 Response via : Initial Calibration
 Integrator: ChemStation 6890 Scale Mode: Small noise peaks clipped

Volume Inj. : 2 µl
 Signal #1 Phase : ZB-MR1 Signal #2 Phase: ZB-MR2
 Signal #1 Info : 30Mx0.32mmx 0.50µ Signal #2 Info : 30M x 0.32mm x 0.25µm

Compound	RT#1	RT#2	Resp#1	Resp#2	ng/ml	ng/ml

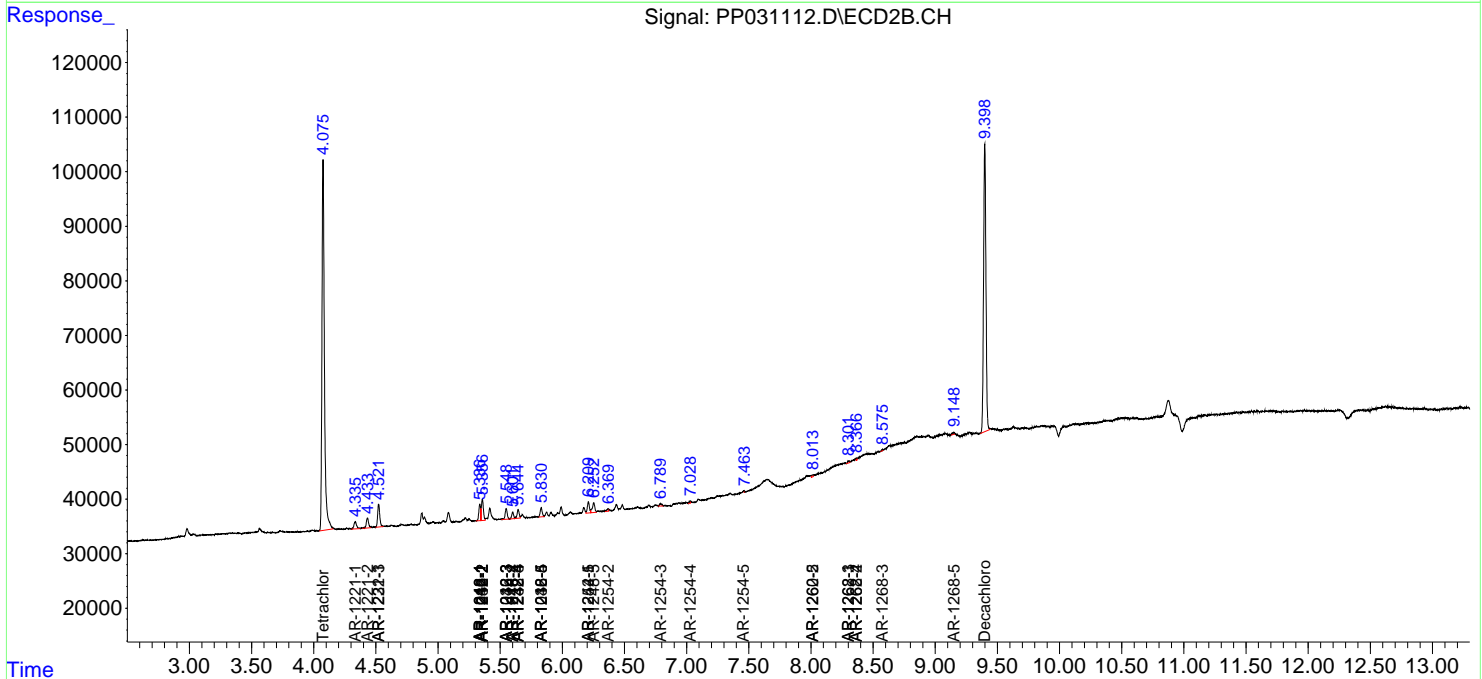
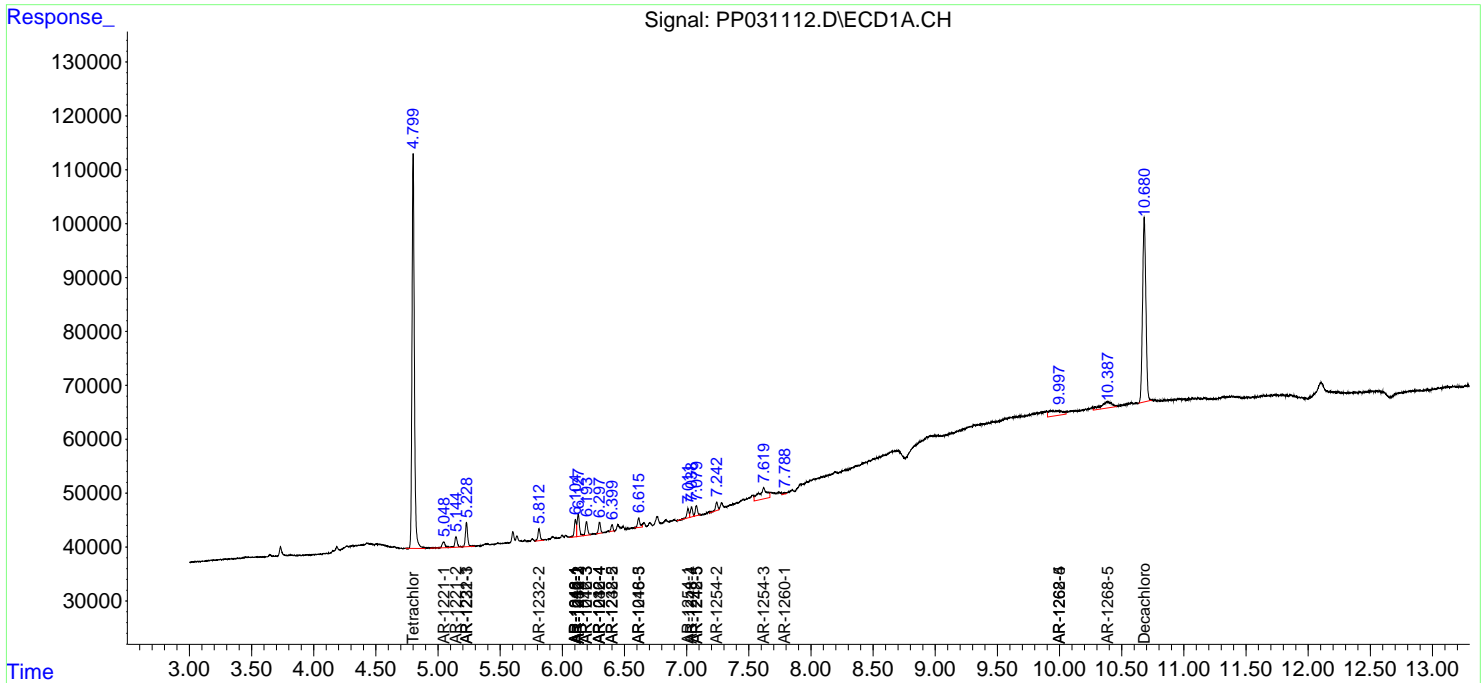
(f)=RT Delta > 1/2 Window (#)=Amounts differ by > 25% (m)=manual int.

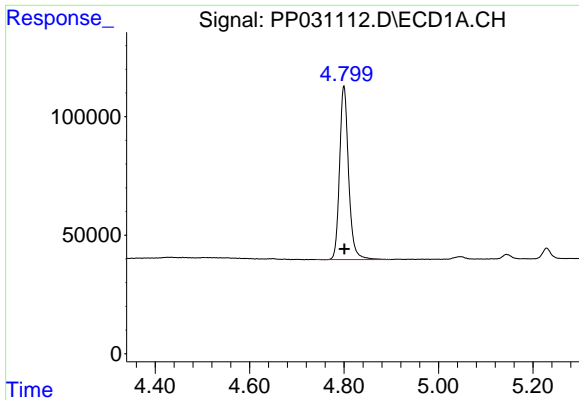
Data Path : Z:\pestpcbsrv\HPCHEM1\ECD_P\Data\PP110420\
 Data File : PP031112.D
 Signal(s) : Signal #1: ECD1A.CH Signal #2: ECD2B.CH
 Acq On : 04 Nov 2020 16:44
 Operator : DD\AJ
 Sample : L4214-02
 Misc : AR1232 LOQ 50 PPB
 ALS Vial : 25 Sample Multiplier: 1

Instrument :
 ECD_P
 Client Sampled :
 LOQ-SOIL-02-QT4-2020

Integration File signal 1: autoint1.e
 Integration File signal 2: autoint2.e
 Quant Time: Nov 05 05:05:09 2020
 Quant Method : Z:\pestpcbsrv\HPCHEM1\ECD_P\methods\PP110420.M
 Quant Title : GC EXTRACTABLES
 QLast Update : Wed Nov 04 08:24:38 2020
 Response via : Initial Calibration
 Integrator: ChemStation 6890 Scale Mode: Small noise peaks clipped

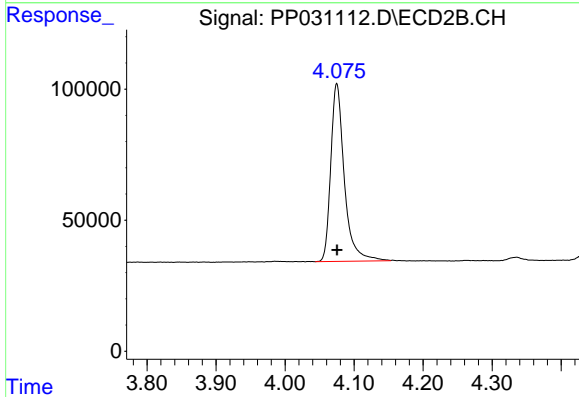
Volume Inj. : 2 µl
 Signal #1 Phase : ZB-MR1 Signal #2 Phase: ZB-MR2
 Signal #1 Info : 30Mx0.32mmx 0.50µ Signal #2 Info : 30M x 0.32mm x 0.25µm



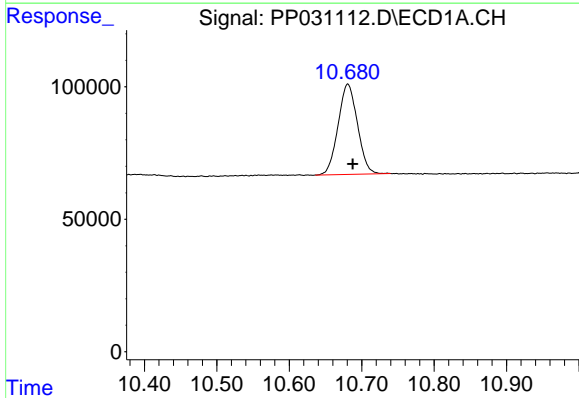


#1 Tetrachloro-m-xylene
 R.T.: 4.800 min
 Delta R.T.: -0.001 min
 Response: 972896
 Conc: 14.57 ng/ml

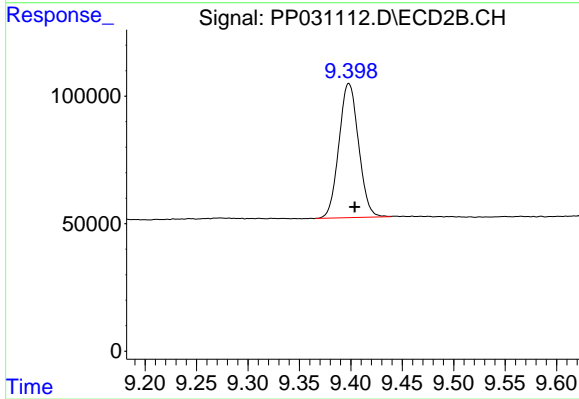
Instrument :
 ECD_P
ClientSampleId :
 LOQ-SOIL-02-QT4-2020



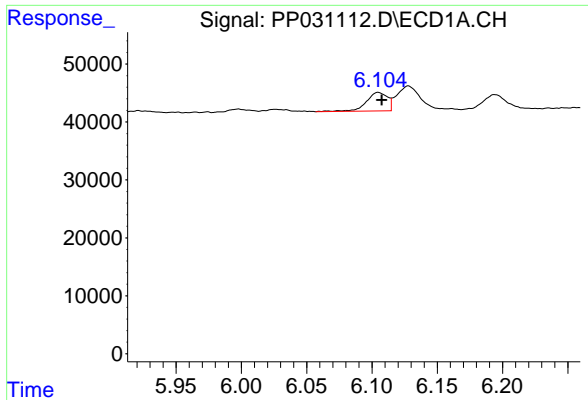
#1 Tetrachloro-m-xylene
 R.T.: 4.075 min
 Delta R.T.: 0.000 min
 Response: 929125
 Conc: 13.98 ng/ml



#2 Decachlorobiphenyl
 R.T.: 10.681 min
 Delta R.T.: -0.007 min
 Response: 635381
 Conc: 15.89 ng/ml

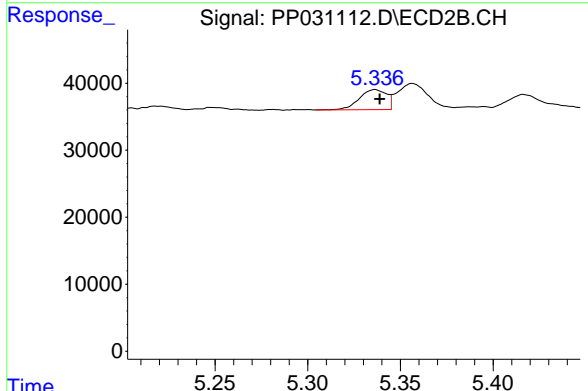


#2 Decachlorobiphenyl
 R.T.: 9.398 min
 Delta R.T.: -0.006 min
 Response: 699754
 Conc: 16.76 ng/ml

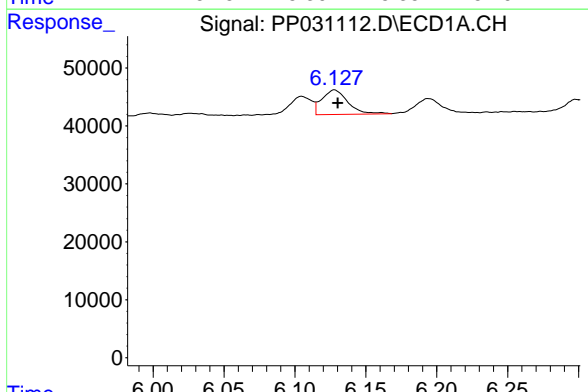


#3 AR-1016-1
 R.T.: 6.105 min
 Delta R.T.: -0.002 min
 Response: 35861
 Conc: 18.42 ng/ml

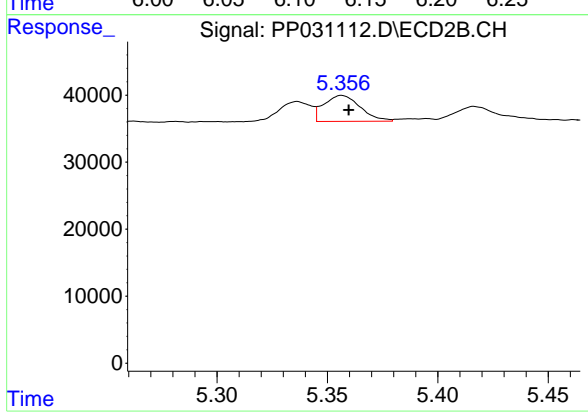
Instrument :
 ECD_P
ClientSampleId :
 LOQ-SOIL-02-QT4-2020



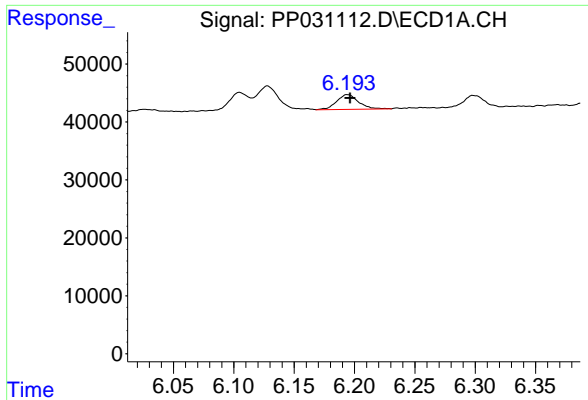
#3 AR-1016-1
 R.T.: 5.336 min
 Delta R.T.: -0.002 min
 Response: 30648
 Conc: 16.52 ng/ml



#4 AR-1016-2
 R.T.: 6.128 min
 Delta R.T.: -0.002 min
 Response: 54259
 Conc: 19.01 ng/ml

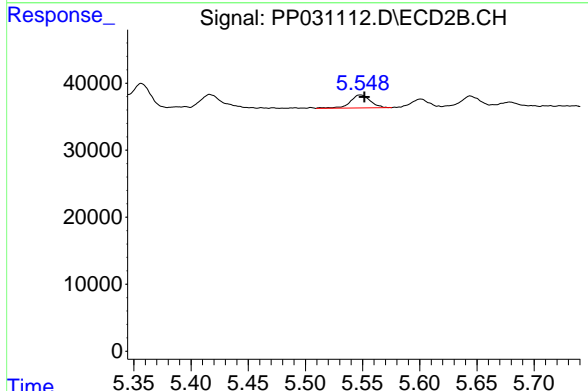


#4 AR-1016-2
 R.T.: 5.356 min
 Delta R.T.: -0.003 min
 Response: 44363
 Conc: 16.32 ng/ml

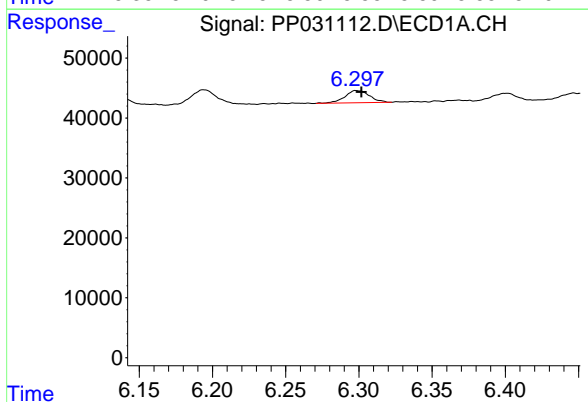


#5 AR-1016-3
 R.T.: 6.194 min
 Delta R.T.: -0.002 min
 Response: 32241
 Conc: 18.51 ng/ml

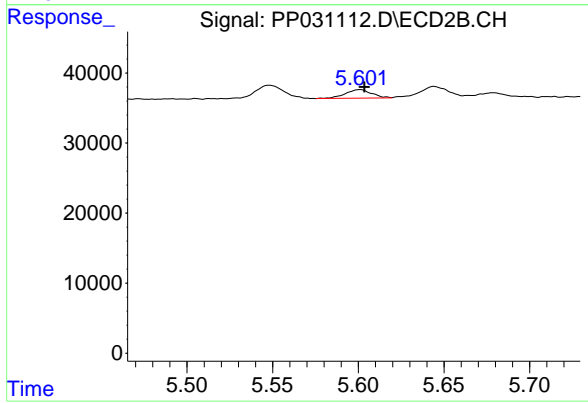
Instrument :
 ECD_P
ClientSampleId :
 LOQ-SOIL-02-QT4-2020



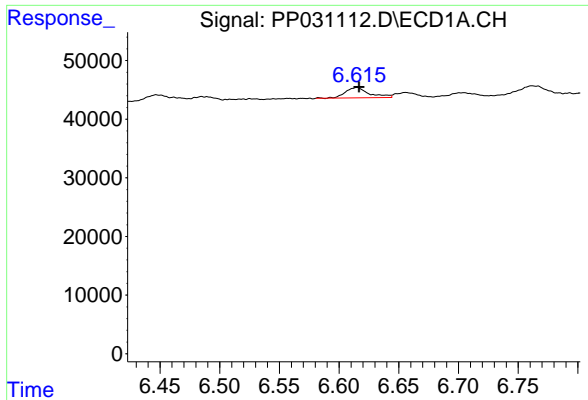
#5 AR-1016-3
 R.T.: 5.548 min
 Delta R.T.: -0.003 min
 Response: 23761
 Conc: 18.76 ng/ml



#6 AR-1016-4
 R.T.: 6.299 min
 Delta R.T.: -0.003 min
 Response: 23815
 Conc: 16.48 ng/ml

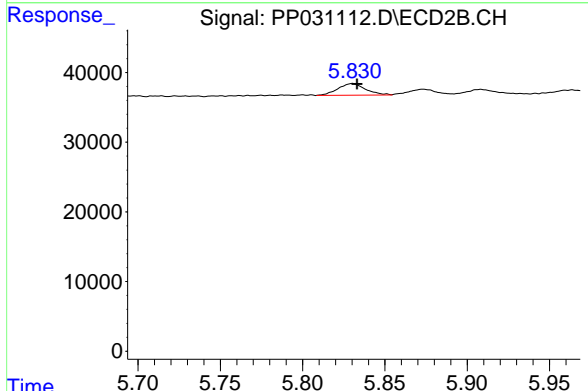


#6 AR-1016-4
 R.T.: 5.601 min
 Delta R.T.: -0.003 min
 Response: 13071
 Conc: 14.17 ng/ml

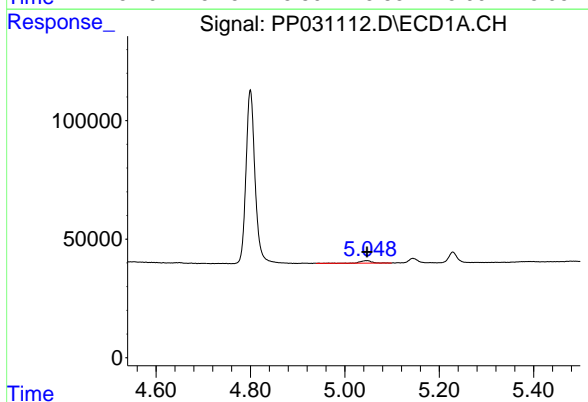


#7 AR-1016-5
 R.T.: 6.614 min
 Delta R.T.: -0.002 min
 Response: 24501
 Conc: 19.65 ng/ml

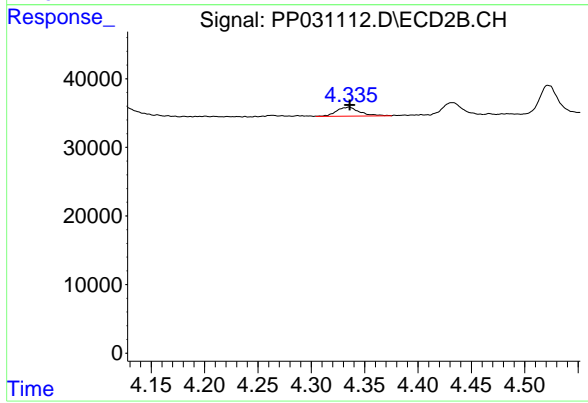
Instrument :
 ECD_P
ClientSampleId :
 LOQ-SOIL-02-QT4-2020



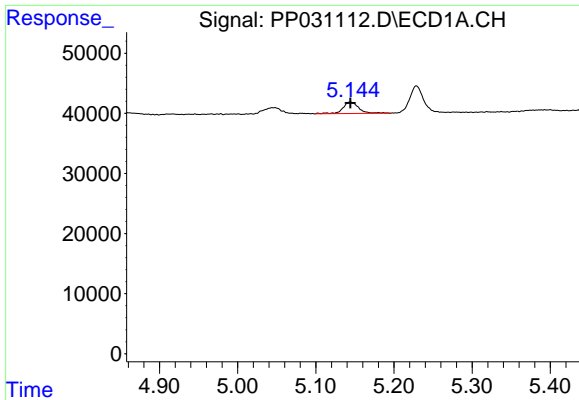
#7 AR-1016-5
 R.T.: 5.830 min
 Delta R.T.: -0.003 min
 Response: 19477
 Conc: 14.84 ng/ml



#8 AR-1221-1
 R.T.: 5.046 min
 Delta R.T.: -0.001 min
 Response: 20582
 Conc: 34.08 ng/ml

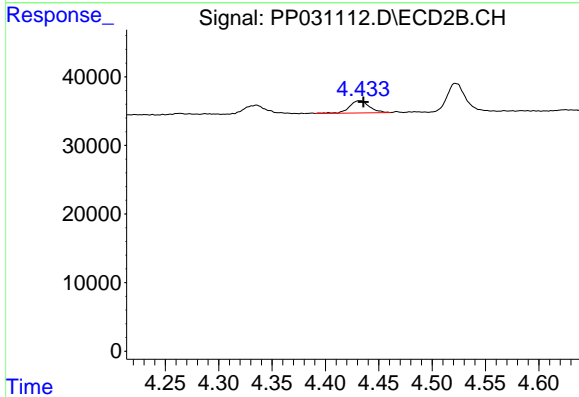


#8 AR-1221-1
 R.T.: 4.335 min
 Delta R.T.: 0.000 min
 Response: 19558
 Conc: 34.73 ng/ml

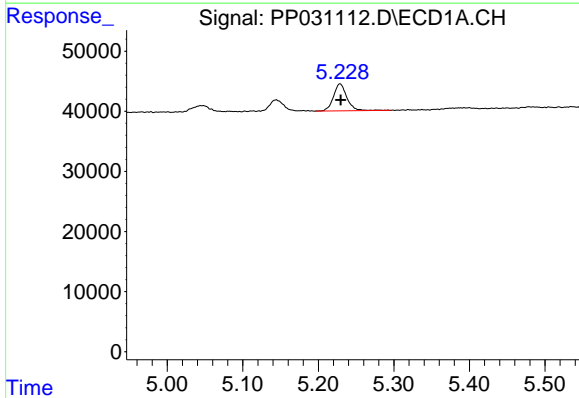


#9 AR-1221-2
 R.T.: 5.144 min
 Delta R.T.: 0.000 min
 Response: 27368
 Conc: 60.93 ng/ml

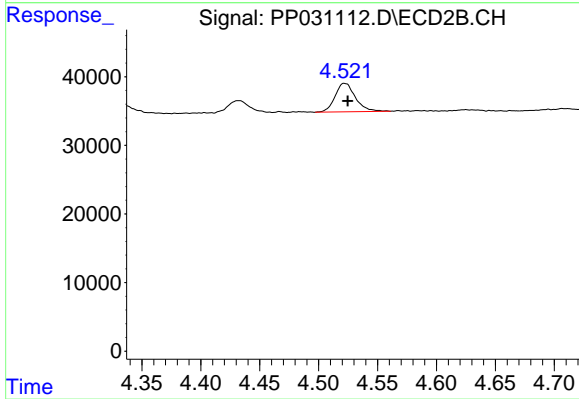
Instrument :
 ECD_P
 ClientSampleId :
 LOQ-SOIL-02-QT4-2020



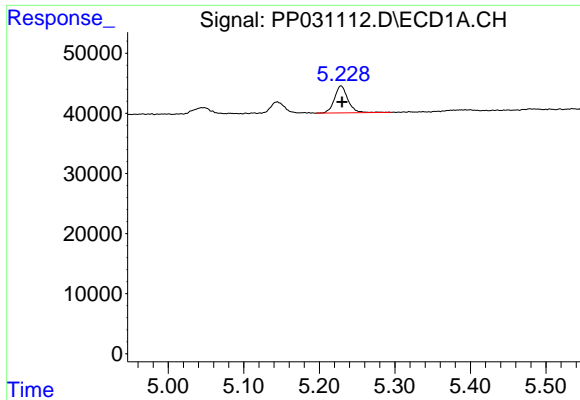
#9 AR-1221-2
 R.T.: 4.433 min
 Delta R.T.: -0.003 min
 Response: 23712
 Conc: 57.15 ng/ml



#10 AR-1221-3
 R.T.: 5.229 min
 Delta R.T.: 0.000 min
 Response: 56072
 Conc: 41.55 ng/ml

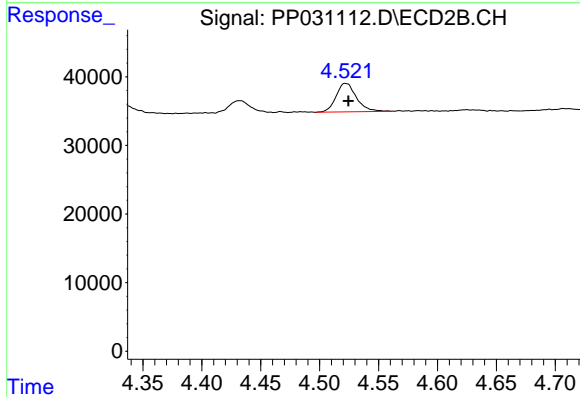


#10 AR-1221-3
 R.T.: 4.522 min
 Delta R.T.: -0.003 min
 Response: 49913
 Conc: 38.06 ng/ml

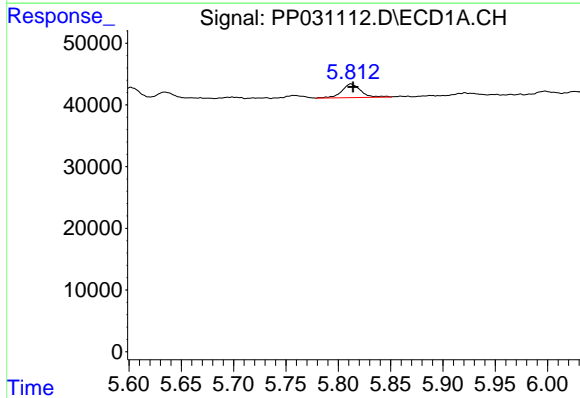


#11 AR-1232-1
 R.T.: 5.229 min
 Delta R.T.: -0.001 min
 Response: 56072
 Conc: 45.85 ng/ml

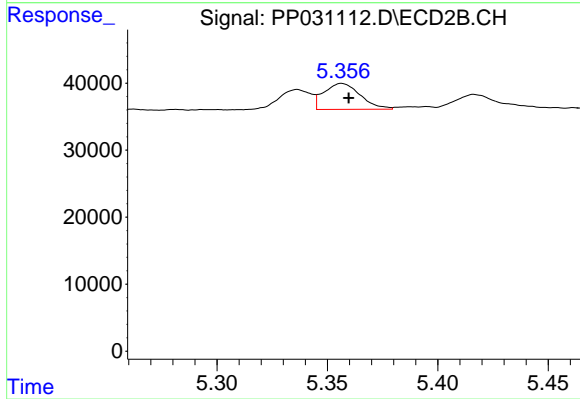
Instrument :
 ECD_P
ClientSampleId :
 LOQ-SOIL-02-QT4-2020



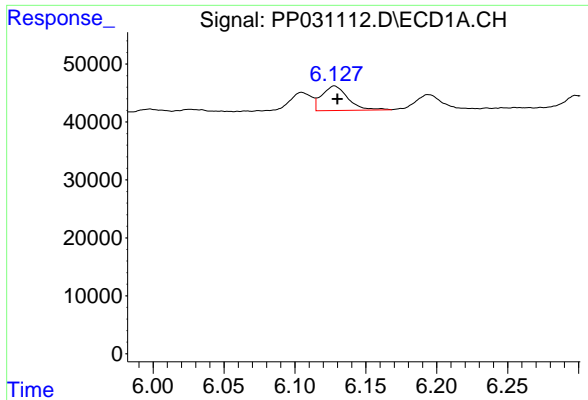
#11 AR-1232-1
 R.T.: 4.522 min
 Delta R.T.: -0.003 min
 Response: 49913
 Conc: 41.67 ng/ml



#12 AR-1232-2
 R.T.: 5.812 min
 Delta R.T.: -0.002 min
 Response: 28019
 Conc: 46.14 ng/ml

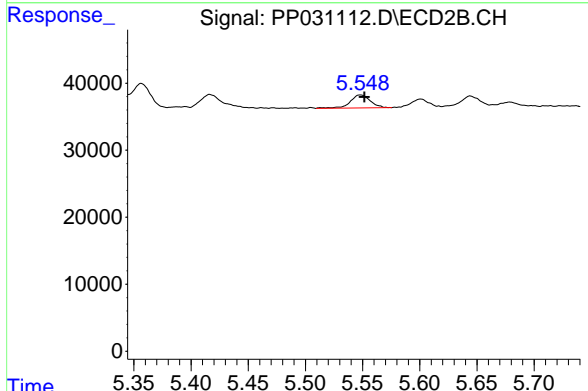


#12 AR-1232-2
 R.T.: 5.356 min
 Delta R.T.: -0.003 min
 Response: 44363
 Conc: 41.75 ng/ml

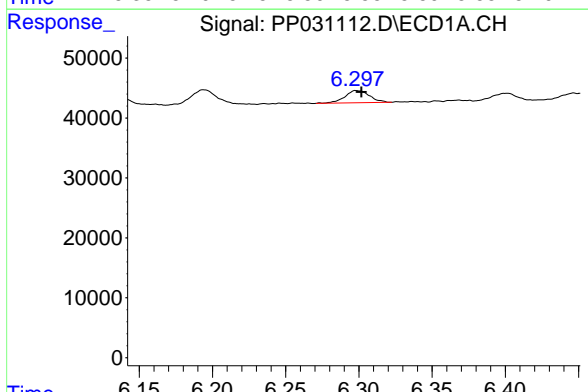


#13 AR-1232-3
 R.T.: 6.128 min
 Delta R.T.: -0.002 min
 Response: 54259
 Conc: 48.57 ng/ml

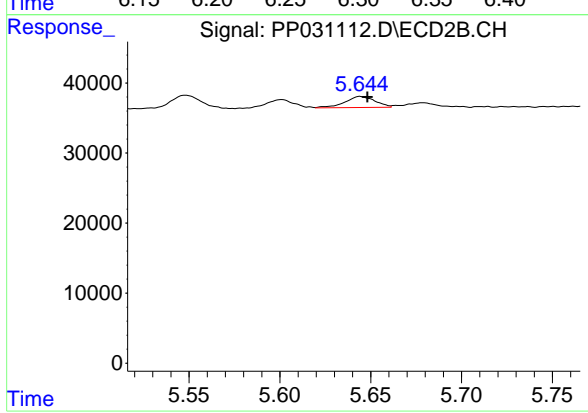
Instrument :
 ECD_P
ClientSampleId :
 LOQ-SOIL-02-QT4-2020



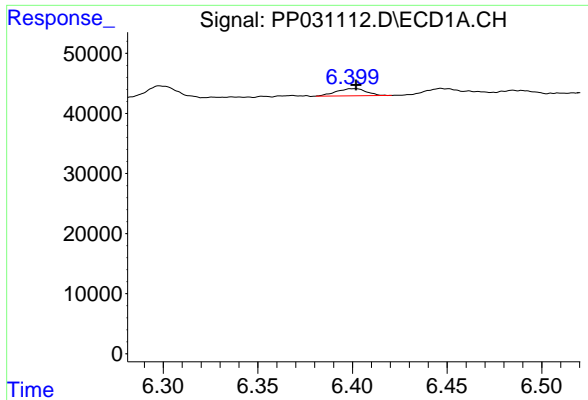
#13 AR-1232-3
 R.T.: 5.548 min
 Delta R.T.: -0.003 min
 Response: 23761
 Conc: 46.35 ng/ml



#14 AR-1232-4
 R.T.: 6.299 min
 Delta R.T.: -0.003 min
 Response: 23815
 Conc: 41.96 ng/ml



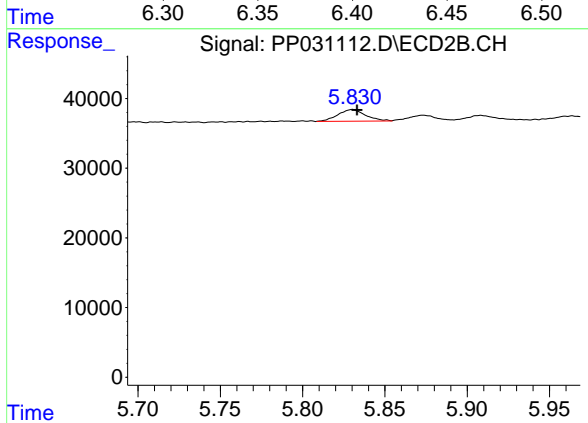
#14 AR-1232-4
 R.T.: 5.644 min
 Delta R.T.: -0.004 min
 Response: 18055
 Conc: 41.34 ng/ml



#15 AR-1232-5

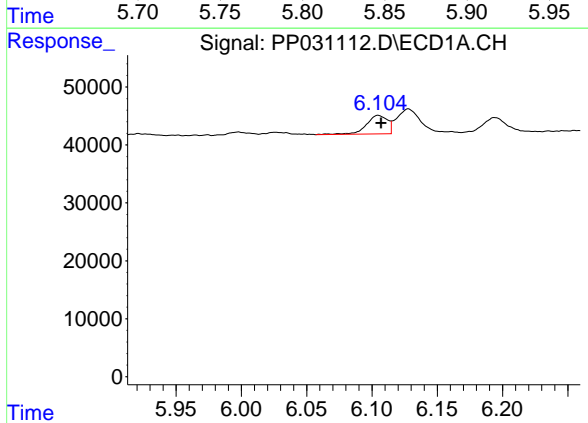
R.T.: 6.400 min
 Delta R.T.: -0.001 min
 Response: 13047
 Conc: 37.65 ng/ml

Instrument :
 ECD_P
 ClientSampleId :
 LOQ-SOIL-02-QT4-2020



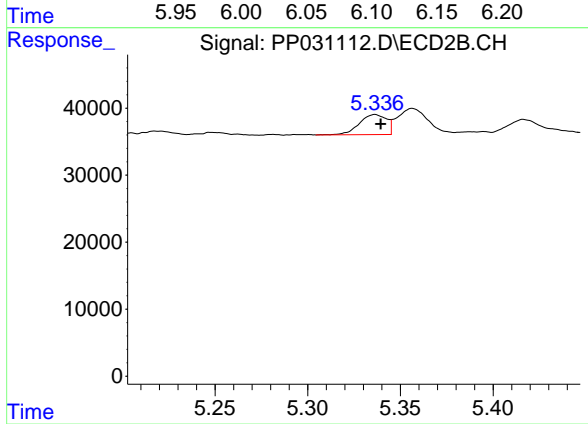
#15 AR-1232-5

R.T.: 5.830 min
 Delta R.T.: -0.003 min
 Response: 19477
 Conc: 40.33 ng/ml



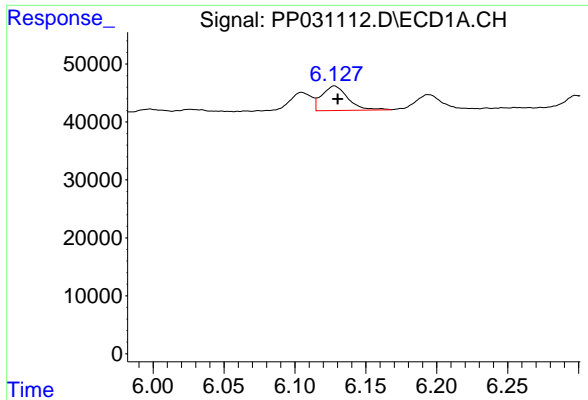
#16 AR-1242-1

R.T.: 6.105 min
 Delta R.T.: -0.002 min
 Response: 35861
 Conc: 26.69 ng/ml



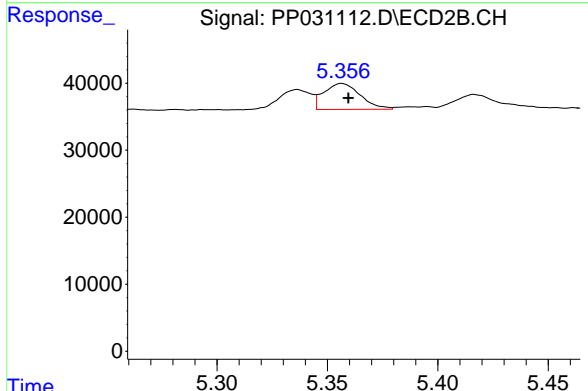
#16 AR-1242-1

R.T.: 5.336 min
 Delta R.T.: -0.003 min
 Response: 30648
 Conc: 23.82 ng/ml

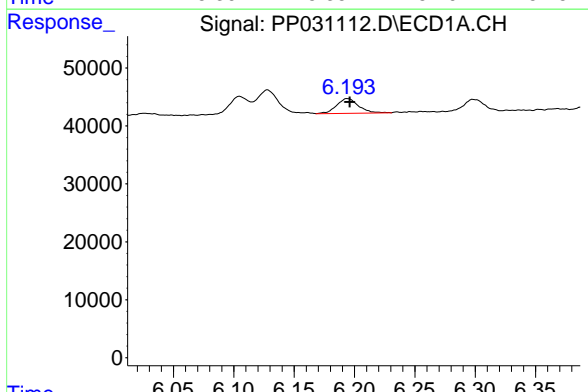


#17 AR-1242-2
 R.T.: 6.128 min
 Delta R.T.: -0.002 min
 Response: 54259
 Conc: 27.78 ng/ml

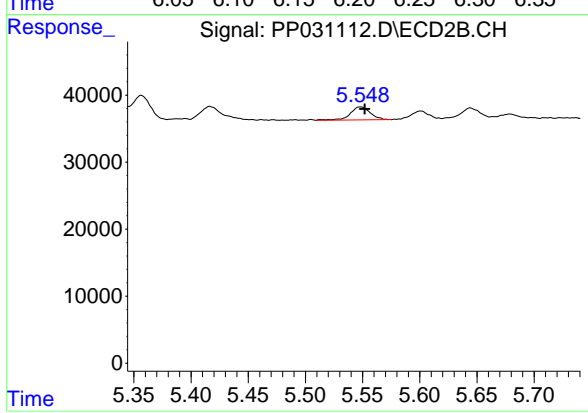
Instrument :
 ECD_P
ClientSampleId :
 LOQ-SOIL-02-QT4-2020



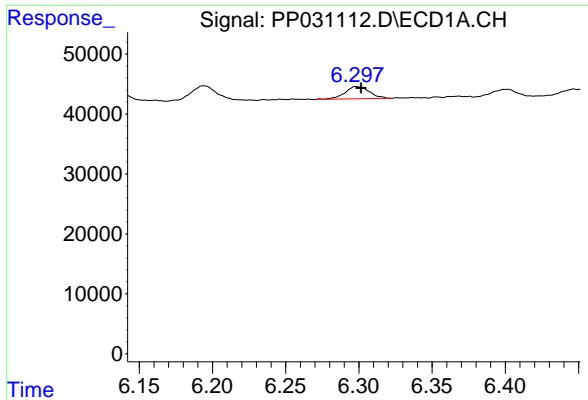
#17 AR-1242-2
 R.T.: 5.356 min
 Delta R.T.: -0.003 min
 Response: 44363
 Conc: 23.76 ng/ml



#18 AR-1242-3
 R.T.: 6.194 min
 Delta R.T.: -0.002 min
 Response: 32241
 Conc: 26.44 ng/ml

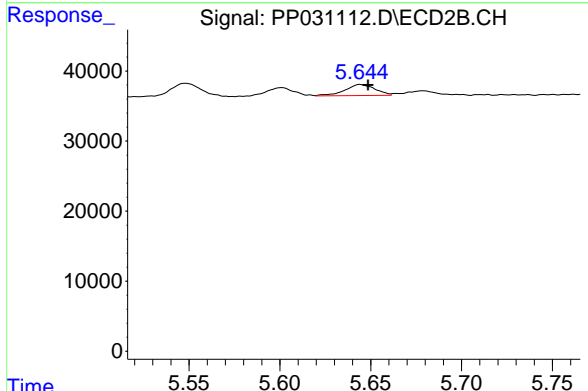


#18 AR-1242-3
 R.T.: 5.548 min
 Delta R.T.: -0.003 min
 Response: 23761
 Conc: 25.31 ng/ml

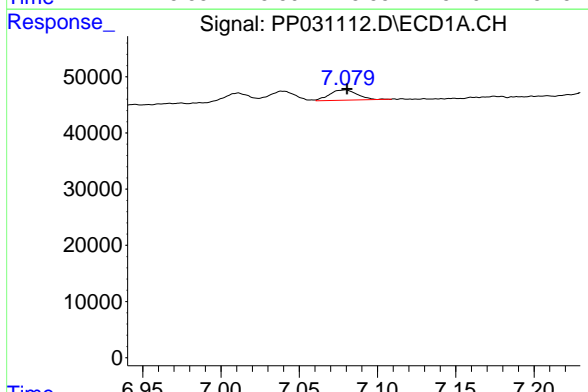


#19 AR-1242-4
 R.T.: 6.299 min
 Delta R.T.: -0.002 min
 Response: 23815
 Conc: 23.51 ng/ml

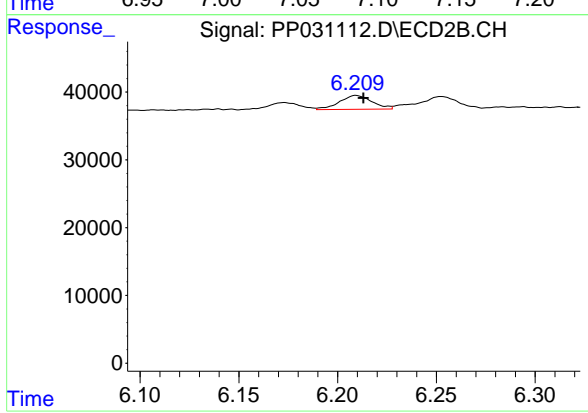
Instrument :
 ECD_P
ClientSampleId :
 LOQ-SOIL-02-QT4-2020



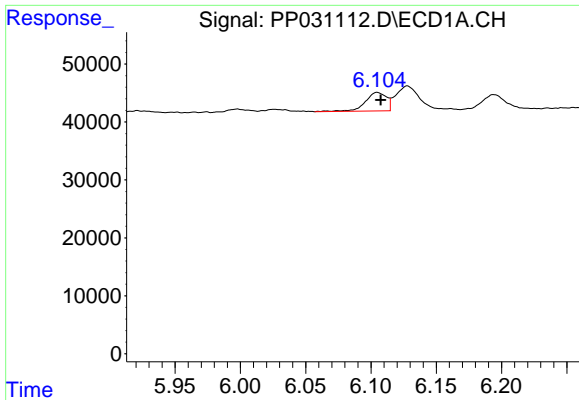
#19 AR-1242-4
 R.T.: 5.644 min
 Delta R.T.: -0.004 min
 Response: 18055
 Conc: 20.82 ng/ml



#20 AR-1242-5
 R.T.: 7.078 min
 Delta R.T.: -0.002 min
 Response: 22831
 Conc: 23.93 ng/ml

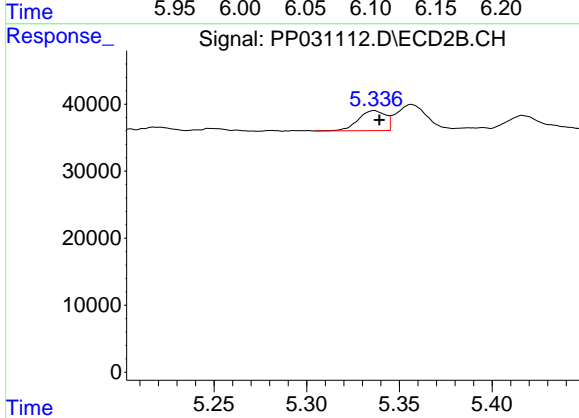


#20 AR-1242-5
 R.T.: 6.209 min
 Delta R.T.: -0.004 min
 Response: 23565
 Conc: 23.67 ng/ml

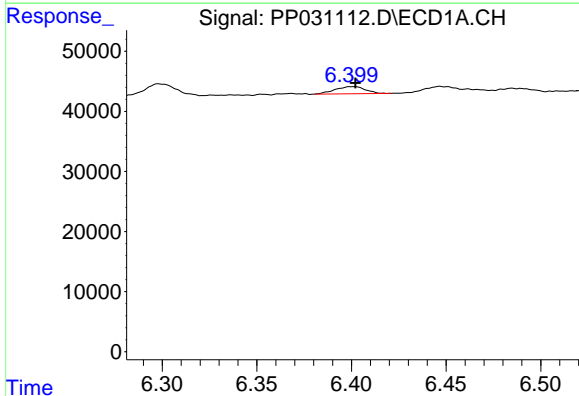


#21 AR-1248-1
 R.T.: 6.105 min
 Delta R.T.: -0.002 min
 Response: 35861
 Conc: 37.19 ng/ml

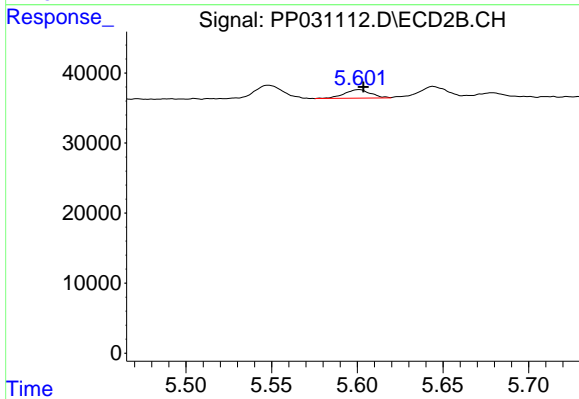
Instrument :
 ECD_P
ClientSampleId :
 LOQ-SOIL-02-QT4-2020



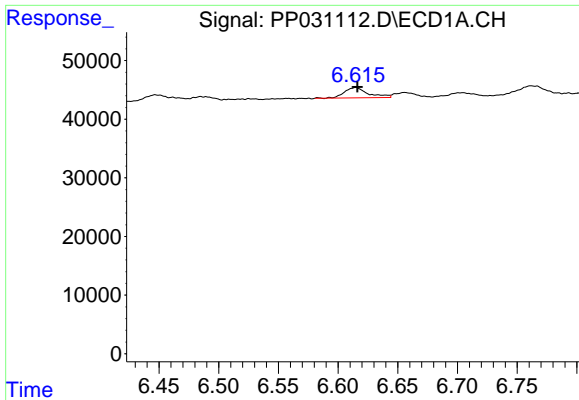
#21 AR-1248-1
 R.T.: 5.336 min
 Delta R.T.: -0.003 min
 Response: 30648
 Conc: 33.12 ng/ml



#22 AR-1248-2
 R.T.: 6.400 min
 Delta R.T.: -0.002 min
 Response: 13047
 Conc: 11.28 ng/ml



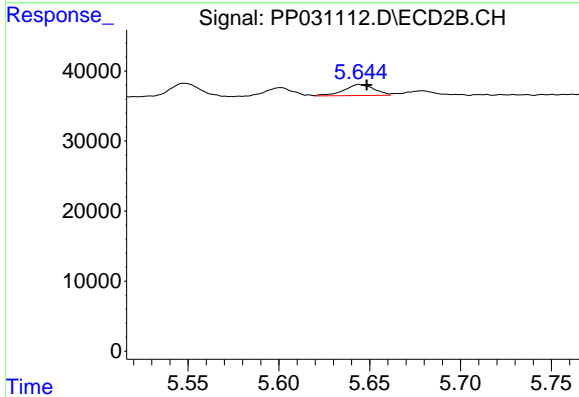
#22 AR-1248-2
 R.T.: 5.601 min
 Delta R.T.: -0.002 min
 Response: 13071
 Conc: 11.86 ng/ml



#23 AR-1248-3

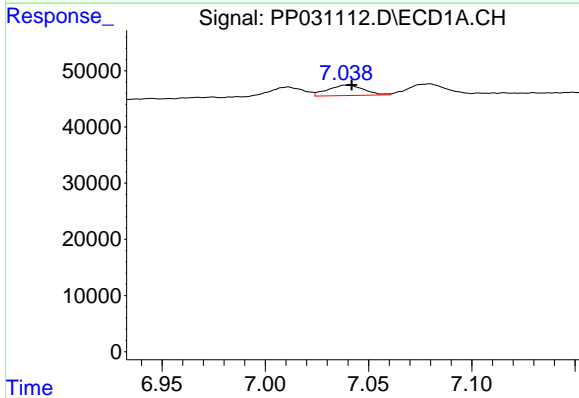
R.T.: 6.614 min
 Delta R.T.: -0.002 min
 Response: 24501
 Conc: 17.22 ng/ml

Instrument :
 ECD_P
ClientSampleId :
 LOQ-SOIL-02-QT4-2020



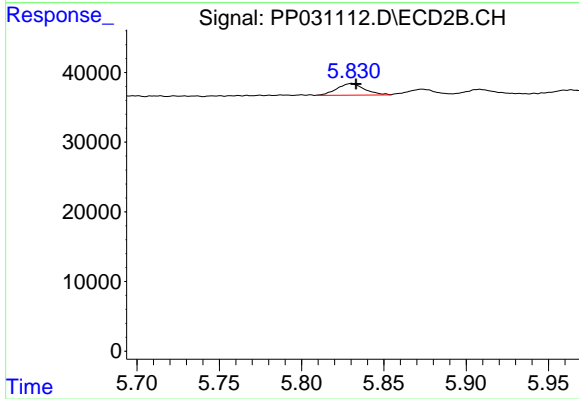
#23 AR-1248-3

R.T.: 5.644 min
 Delta R.T.: -0.004 min
 Response: 18055
 Conc: 14.92 ng/ml



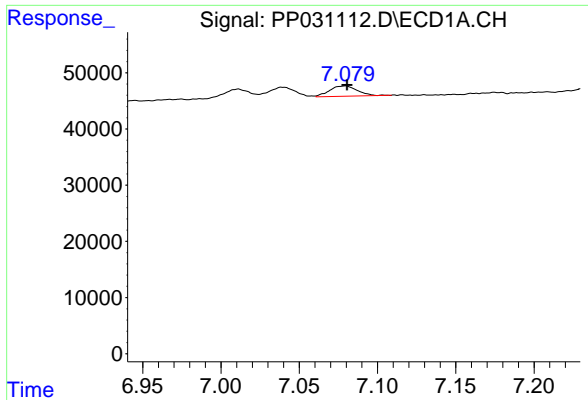
#24 AR-1248-4

R.T.: 7.040 min
 Delta R.T.: -0.002 min
 Response: 22551
 Conc: 14.80 ng/ml



#24 AR-1248-4

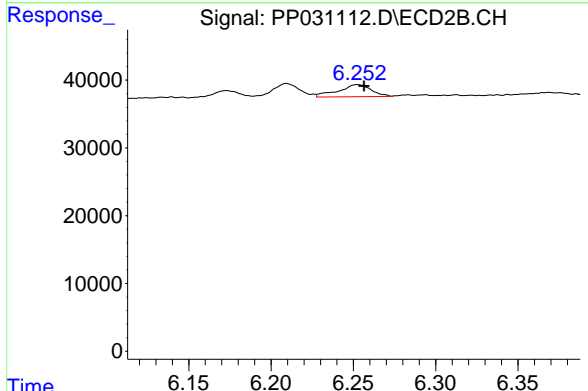
R.T.: 5.830 min
 Delta R.T.: -0.003 min
 Response: 19477
 Conc: 13.20 ng/ml



#25 AR-1248-5

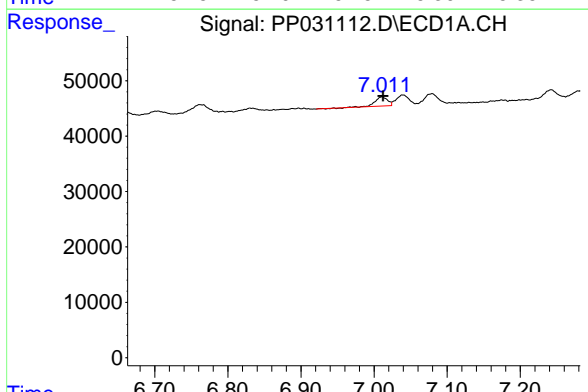
R.T.: 7.078 min
 Delta R.T.: -0.002 min
 Response: 22831
 Conc: 15.05 ng/ml

Instrument :
 ECD_P
ClientSampleId :
 LOQ-SOIL-02-QT4-2020



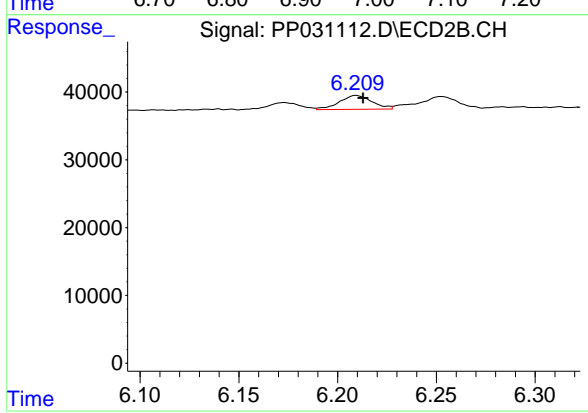
#25 AR-1248-5

R.T.: 6.253 min
 Delta R.T.: -0.004 min
 Response: 25147
 Conc: 19.91 ng/ml



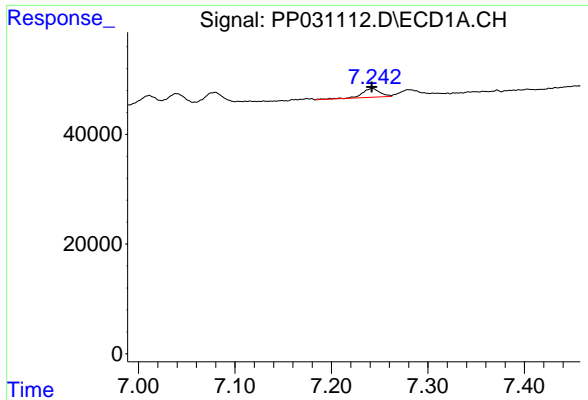
#26 AR-1254-1

R.T.: 7.011 min
 Delta R.T.: -0.002 min
 Response: 20027
 Conc: 14.26 ng/ml



#26 AR-1254-1

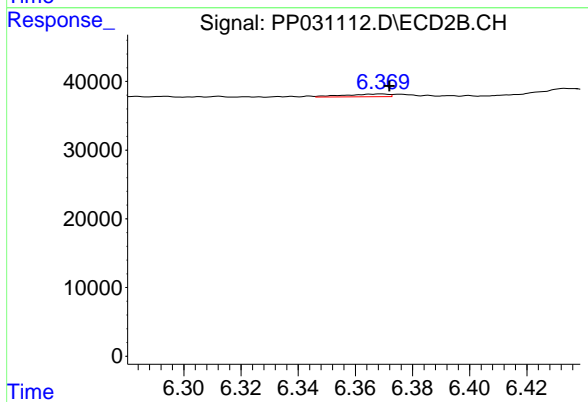
R.T.: 6.209 min
 Delta R.T.: -0.004 min
 Response: 23565
 Conc: 11.98 ng/ml



#27 AR-1254-2

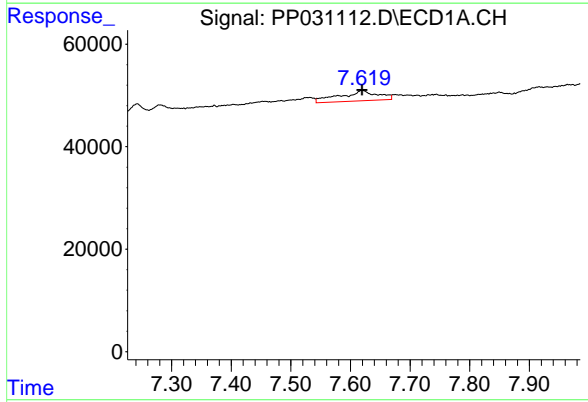
R.T.: 7.242 min
 Delta R.T.: 0.000 min
 Response: 20562
 Conc: 9.86 ng/ml

Instrument :
 ECD_P
ClientSampleId :
 LOQ-SOIL-02-QT4-2020



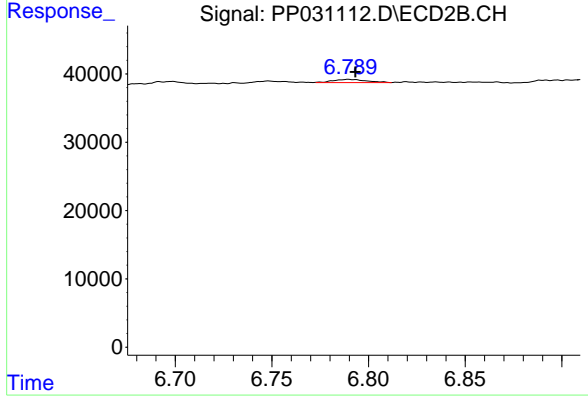
#27 AR-1254-2

R.T.: 6.369 min
 Delta R.T.: -0.003 min
 Response: 4301
 Conc: 2.62 ng/ml



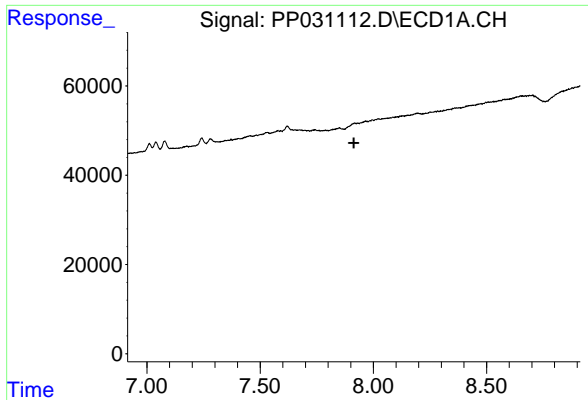
#28 AR-1254-3

R.T.: 7.620 min
 Delta R.T.: 0.000 min
 Response: 90017
 Conc: 39.00 ng/ml



#28 AR-1254-3

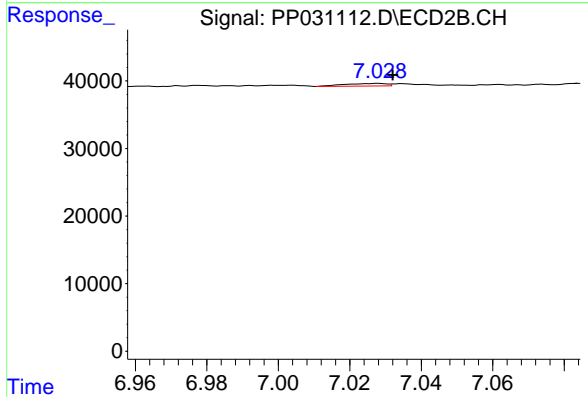
R.T.: 6.790 min
 Delta R.T.: -0.004 min
 Response: 5540
 Conc: 2.02 ng/ml



#29 AR-1254-4

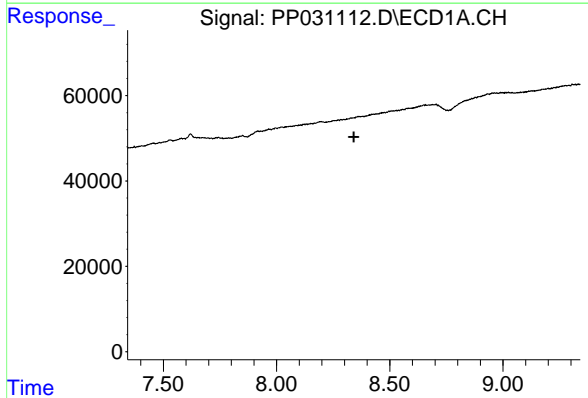
R.T.: 0.000 min
 Exp R.T. : 7.914 min
 Response: 0
 Conc: N.D.

Instrument :
 ECD_P
ClientSampled :
 LOQ-SOIL-02-QT4-2020



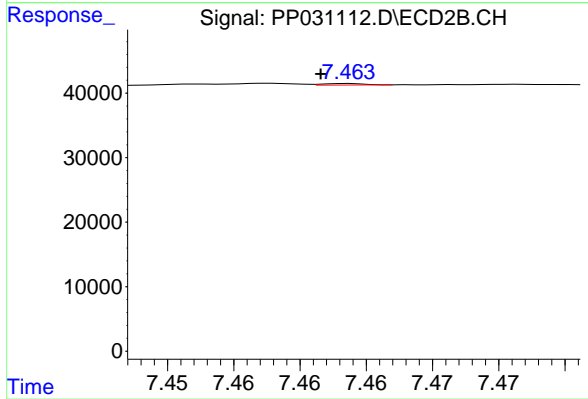
#29 AR-1254-4

R.T.: 7.028 min
 Delta R.T.: -0.004 min
 Response: 3177
 Conc: 1.97 ng/ml



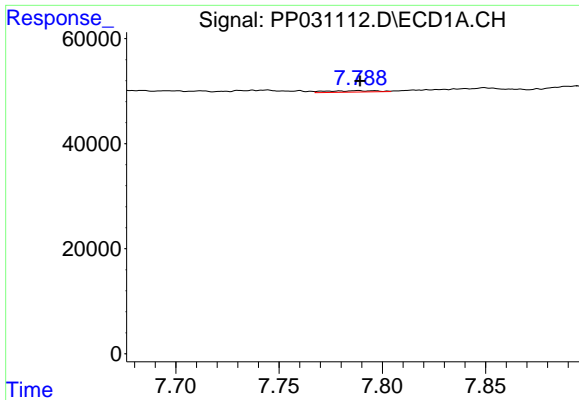
#30 AR-1254-5

R.T.: 0.000 min
 Exp R.T. : 8.341 min
 Response: 0
 Conc: N.D.



#30 AR-1254-5

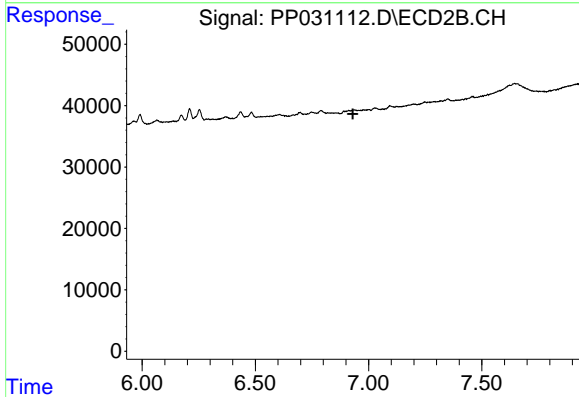
R.T.: 7.464 min
 Delta R.T.: 0.002 min
 Response: 488
 Conc: 0.22 ng/ml



#31 AR-1260-1

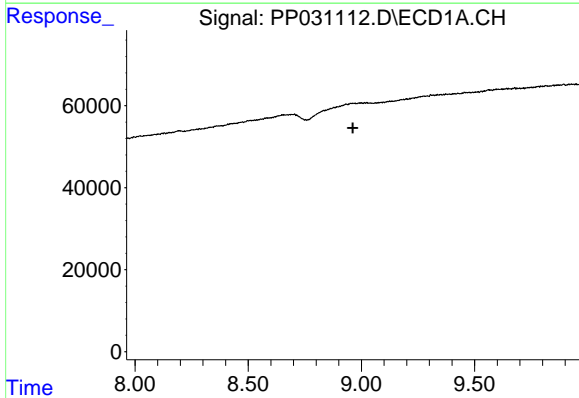
R.T.: 7.788 min
 Delta R.T.: 0.000 min
 Response: 4513
 Conc: 2.46 ng/ml

Instrument :
 ECD_P
ClientSampled :
 LOQ-SOIL-02-QT4-2020



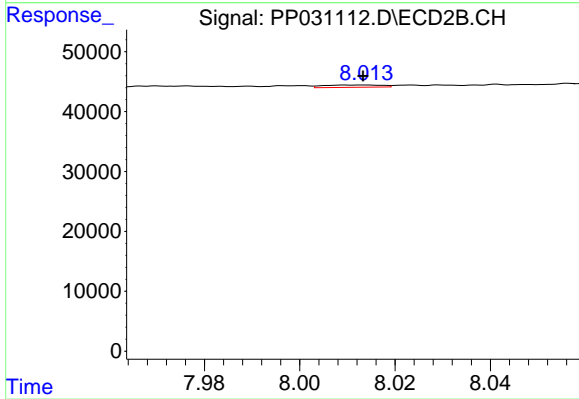
#31 AR-1260-1

R.T.: 0.000 min
 Exp R.T. : 6.931 min
 Response: 0
 Conc: N.D.



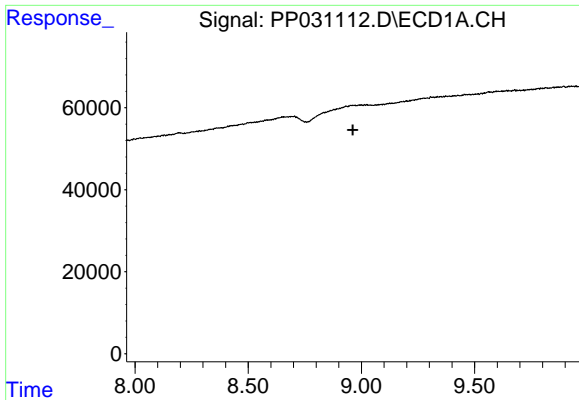
#35 AR-1260-5

R.T.: 0.000 min
 Exp R.T. : 8.962 min
 Response: 0
 Conc: N.D.



#35 AR-1260-5

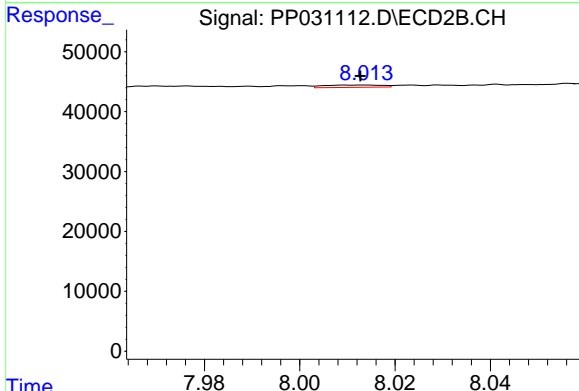
R.T.: 8.014 min
 Delta R.T.: 0.000 min
 Response: 3233
 Conc: 0.72 ng/ml



#37 AR-1262-2

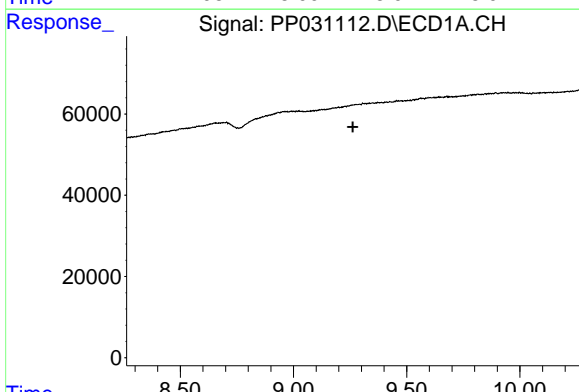
R.T.: 0.000 min
 Exp R.T. : 8.963 min
 Response: 0
 Conc: N.D.

Instrument :
 ECD_P
ClientSampled :
 LOQ-SOIL-02-QT4-2020



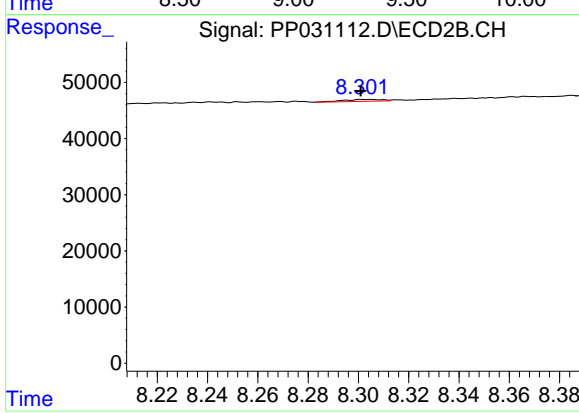
#37 AR-1262-2

R.T.: 8.014 min
 Delta R.T.: 0.000 min
 Response: 3233
 Conc: 0.78 ng/ml



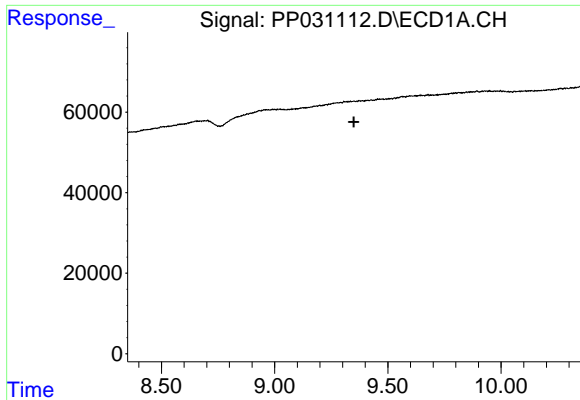
#38 AR-1262-3

R.T.: 0.000 min
 Exp R.T. : 9.262 min
 Response: 0
 Conc: N.D.



#38 AR-1262-3

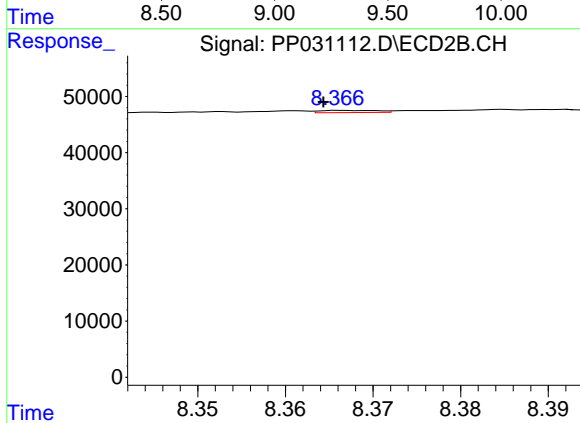
R.T.: 8.301 min
 Delta R.T.: 0.000 min
 Response: 3611
 Conc: 2.13 ng/ml



#39 AR-1262-4

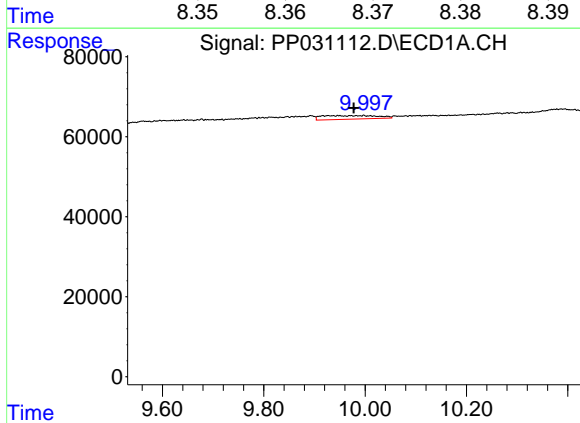
R.T.: 0.000 min
 Exp R.T.: 9.350 min
 Response: 0
 Conc: N.D.

Instrument :
 ECD_P
ClientSampled :
 LOQ-SOIL-02-QT4-2020



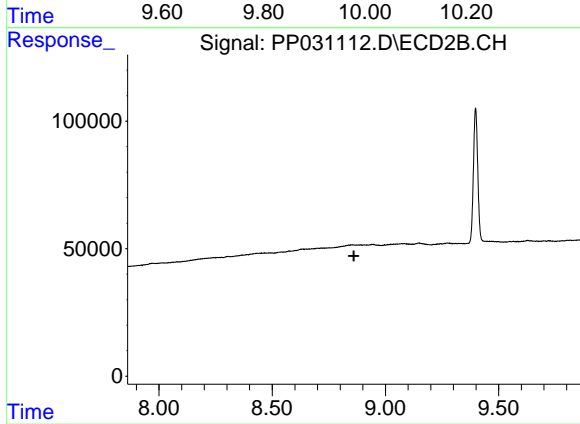
#39 AR-1262-4

R.T.: 8.366 min
 Delta R.T.: 0.002 min
 Response: 1767
 Conc: 0.56 ng/ml



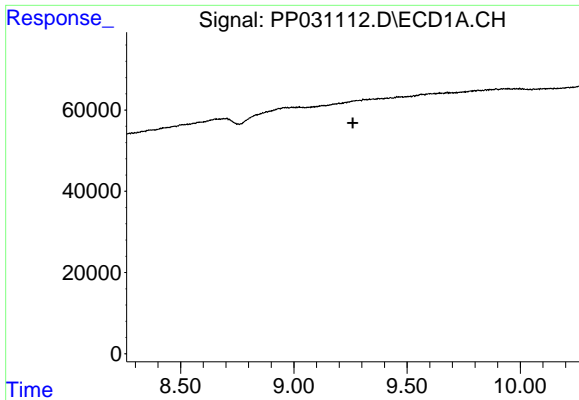
#40 AR-1262-5

R.T.: 9.997 min
 Delta R.T.: 0.019 min
 Response: 69518
 Conc: 49.08 ng/ml



#40 AR-1262-5

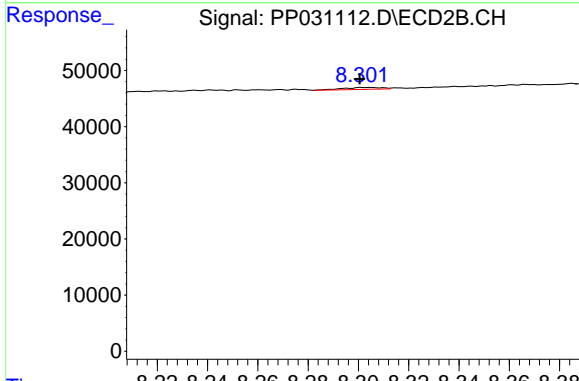
R.T.: 0.000 min
 Exp R.T.: 8.861 min
 Response: 0
 Conc: N.D.



#41 AR-1268-1

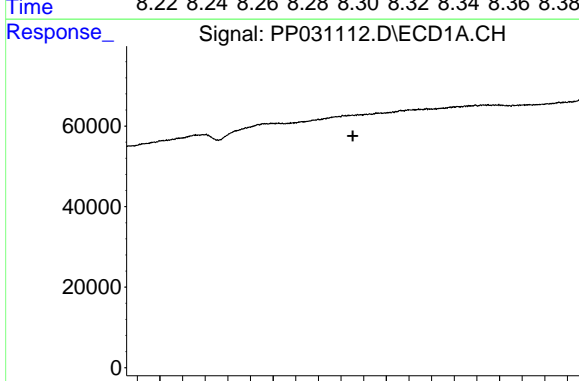
R.T.: 0.000 min
 Exp R.T. : 9.261 min
 Response: 0
 Conc: N.D.

Instrument :
 ECD_P
 ClientSampled :
 LOQ-SOIL-02-QT4-2020



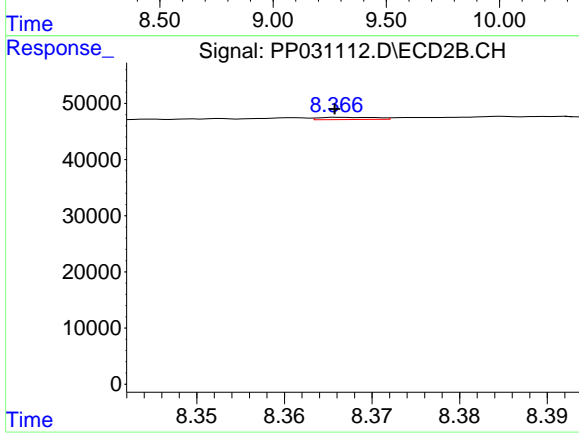
#41 AR-1268-1

R.T.: 8.301 min
 Delta R.T.: 0.000 min
 Response: 3611
 Conc: 0.74 ng/ml



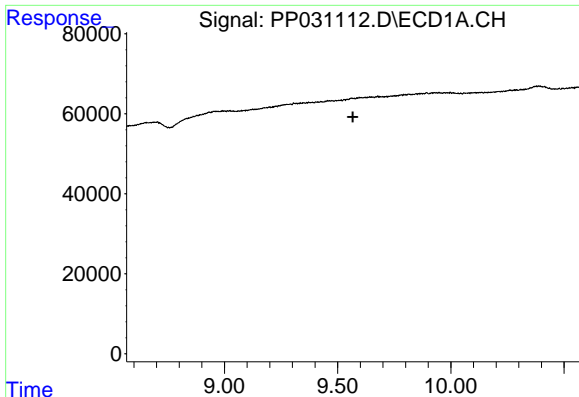
#42 AR-1268-2

R.T.: 0.000 min
 Exp R.T. : 9.352 min
 Response: 0
 Conc: N.D.



#42 AR-1268-2

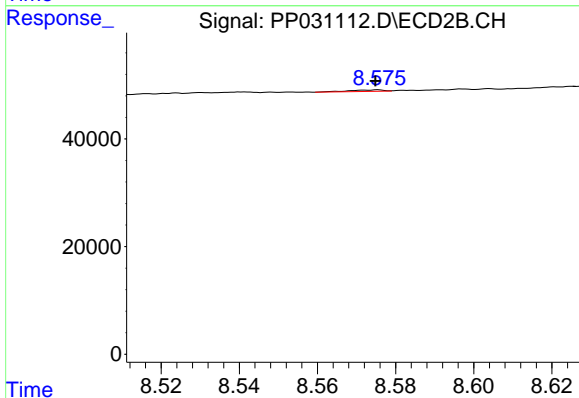
R.T.: 8.366 min
 Delta R.T.: 0.000 min
 Response: 1767
 Conc: 0.37 ng/ml



#43 AR-1268-3

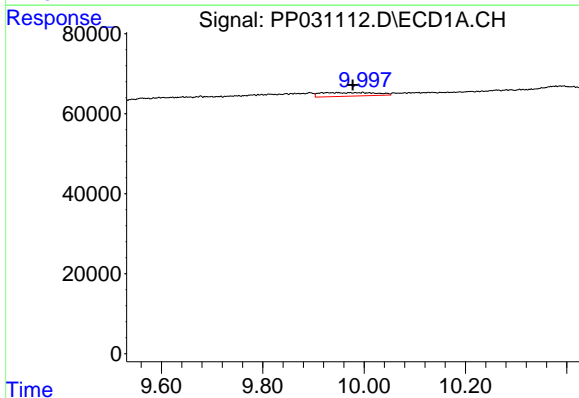
R.T.: 0.000 min
 Exp R.T.: 9.568 min
 Response: 0
 Conc: N.D.

Instrument :
 ECD_P
ClientSampled :
 LOQ-SOIL-02-QT4-2020



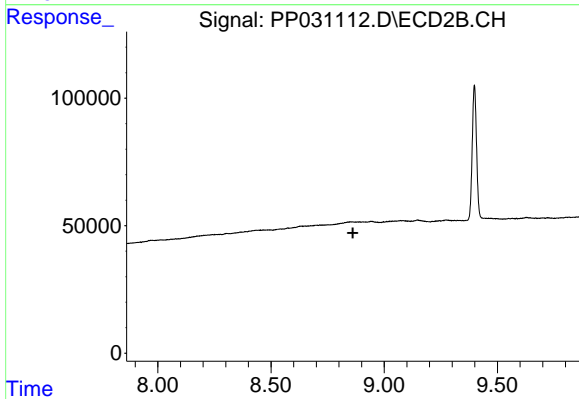
#43 AR-1268-3

R.T.: 8.576 min
 Delta R.T.: 0.000 min
 Response: 1551
 Conc: 0.39 ng/ml



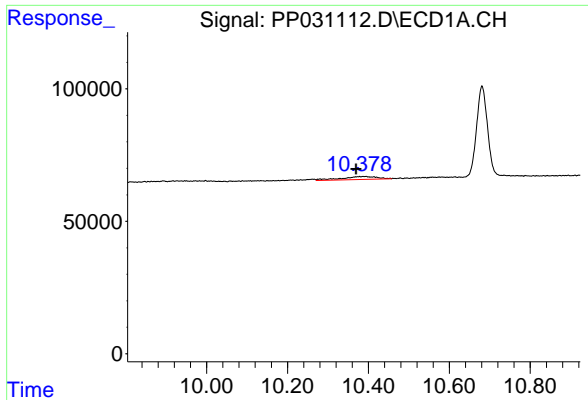
#44 AR-1268-4

R.T.: 9.997 min
 Delta R.T.: 0.019 min
 Response: 69518
 Conc: 43.89 ng/ml



#44 AR-1268-4

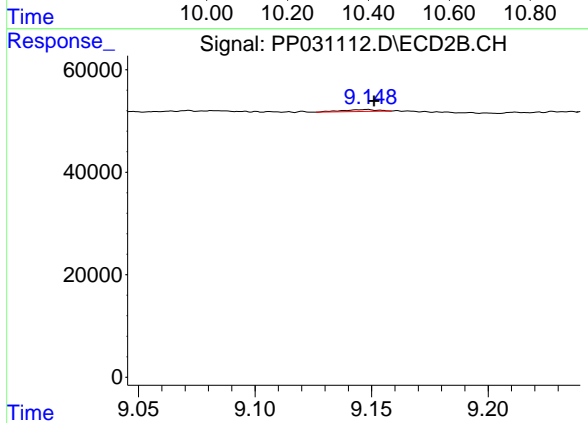
R.T.: 0.000 min
 Exp R.T.: 8.862 min
 Response: 0
 Conc: N.D.



#45 AR-1268-5

R.T.: 10.388 min
Delta R.T.: 0.019 min
Response: 70063
Conc: 5.86 ng/ml

Instrument :
ECD_P
ClientSampleId :
LOQ-SOIL-02-QT4-2020



#45 AR-1268-5

R.T.: 9.148 min
Delta R.T.: -0.003 min
Response: 3904
Conc: 0.29 ng/ml