

Data Path : Z:\pestpcbsrv\HPCHEM1\ECD\_P\Data\PP110420\  
 Data File : PP031116.D  
 Signal(s) : Signal #1: ECD1A.CH Signal #2: ECD2B.CH  
 Acq On : 04 Nov 2020 17:51  
 Operator : DD\AJ  
 Sample : L4214-02  
 Misc : AR1262 LOQ 50 PPB  
 ALS Vial : 29 Sample Multiplier: 1

Instrument :  
 ECD\_P  
 ClientSampleId :  
 LOQ-SOIL-02-QT4-2020

Integration File signal 1: autoint1.e  
 Integration File signal 2: autoint2.e  
 Quant Time: Nov 05 05:06:10 2020  
 Quant Method : Z:\pestpcbsrv\HPCHEM1\ECD\_P\methods\PP110420.M  
 Quant Title : GC EXTRACTABLES  
 QLast Update : Wed Nov 04 08:24:38 2020  
 Response via : Initial Calibration  
 Integrator: ChemStation 6890 Scale Mode: Small noise peaks clipped

Volume Inj. : 2 µl  
 Signal #1 Phase : ZB-MR1 Signal #2 Phase: ZB-MR2  
 Signal #1 Info : 30Mx0.32mmx 0.50µ Signal #2 Info : 30M x 0.32mm x 0.25µm

Compound	RT#1	RT#2	Resp#1	Resp#2	ng/ml	ng/ml
System Monitoring Compounds						
1) SA Tetrachlo...	4.800	4.075	938193	889534	14.047	13.383
2) SA Decachlor...	10.682	9.397	634979	705100	15.881	16.886
Target Compounds						
3) L1 AR-1016-1	6.107	0.000	7159	0	3.677	N.D. #
4) L1 AR-1016-2	6.132	0.000	3020	0	1.058	N.D. #
9) L2 AR-1221-2	5.148	4.431	12845	10049	28.598	24.222
13) L3 AR-1232-3	6.132	0.000	3020	0	2.704	N.D. #
16) L4 AR-1242-1	6.107	0.000	7159	0	5.329	N.D. #
17) L4 AR-1242-2	6.132	0.000	3020	0	1.547	N.D. #
20) L4 AR-1242-5	7.086	6.209	6968	12835	7.302	12.893 #
21) L5 AR-1248-1	6.107	0.000	7159	0	7.424	N.D. #
24) L5 AR-1248-4	7.013f	0.000	34244	0	22.468	N.D. #
25) L5 AR-1248-5	7.086	6.237f	6968	7703	4.593	6.099 #
26) L6 AR-1254-1	7.013	6.209	34244	12835	24.390	6.526 #
27) L6 AR-1254-2	7.241	6.369	29249	15718	14.032	9.565 #
28) L6 AR-1254-3	7.622	6.809f	64597	50159	27.988	18.317 #
29) L6 AR-1254-4	7.913	0.000	15097	0	9.221	N.D. #
30) L6 AR-1254-5	8.337	7.458	63862	62524	37.830	28.556
31) L7 AR-1260-1	7.786	6.927	78682	64608	42.835	32.237
32) L7 AR-1260-2	8.052	7.123	75726	79926	35.151	34.130
33) L7 AR-1260-3	8.416	7.281	98248	84281	59.687	37.071 #
34) L7 AR-1260-4	8.645	7.762	72995	108614	39.258	59.532 #
35) L7 AR-1260-5	8.959	8.009	202348	226088	53.667	50.238
36) L8 AR-1262-1	8.416	7.500	98248	127016	48.899	54.684
37) L8 AR-1262-2	8.959	8.009	202348	226088	55.673	54.535
38) L8 AR-1262-3	9.258	8.297	149174	123065	57.706	72.586 #
39) L8 AR-1262-4	9.348	8.360	136710	175174	66.401	55.163
40) L8 AR-1262-5	9.974	8.856	162270	79478	114.556	49.450 #
41) L9 AR-1268-1	9.258	8.297	149174	123065	34.150	25.138 #
42) L9 AR-1268-2	9.348	8.360	136710	175174	31.792	36.833
43) L9 AR-1268-3	9.568	8.572	38582	7045	10.668	1.761 #
44) L9 AR-1268-4	9.974	8.856	162270	79478	102.451	46.910 #
45) L9 AR-1268-5	10.367	9.145	88884	37196	7.432	2.774 #

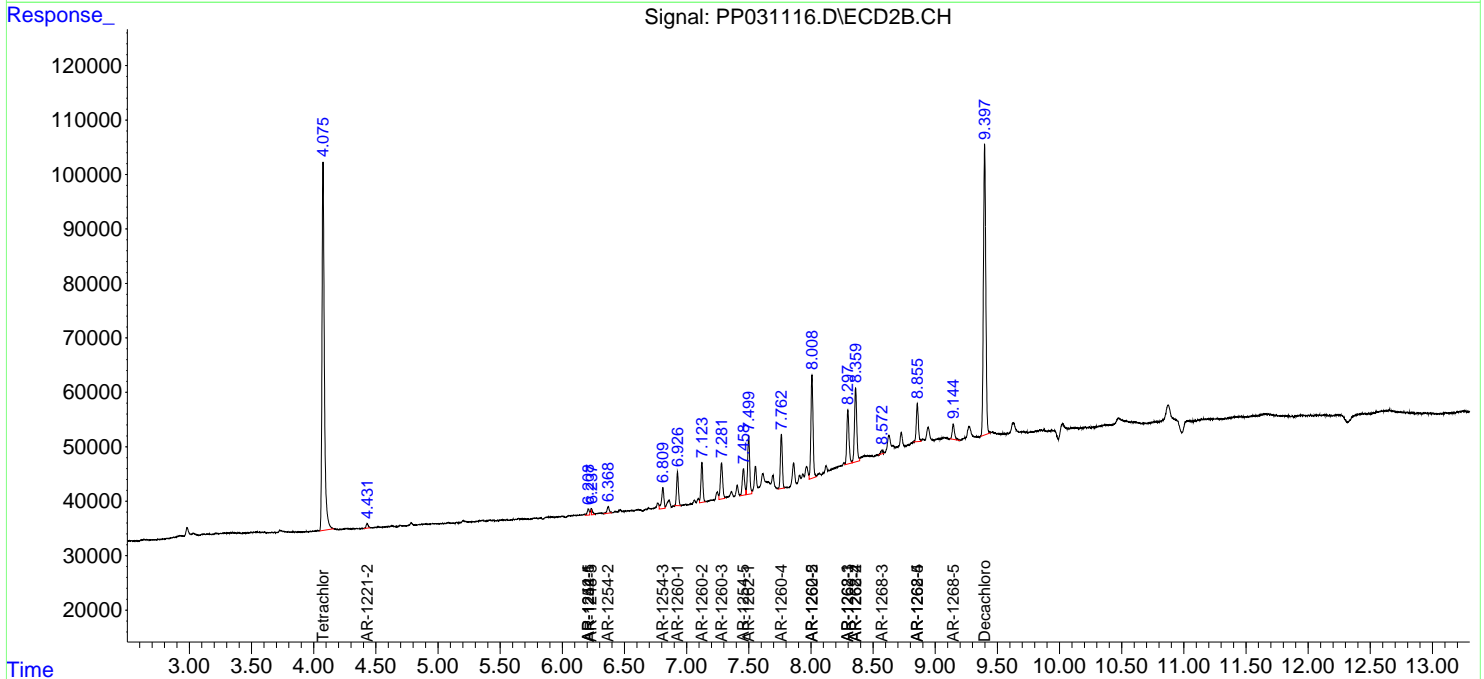
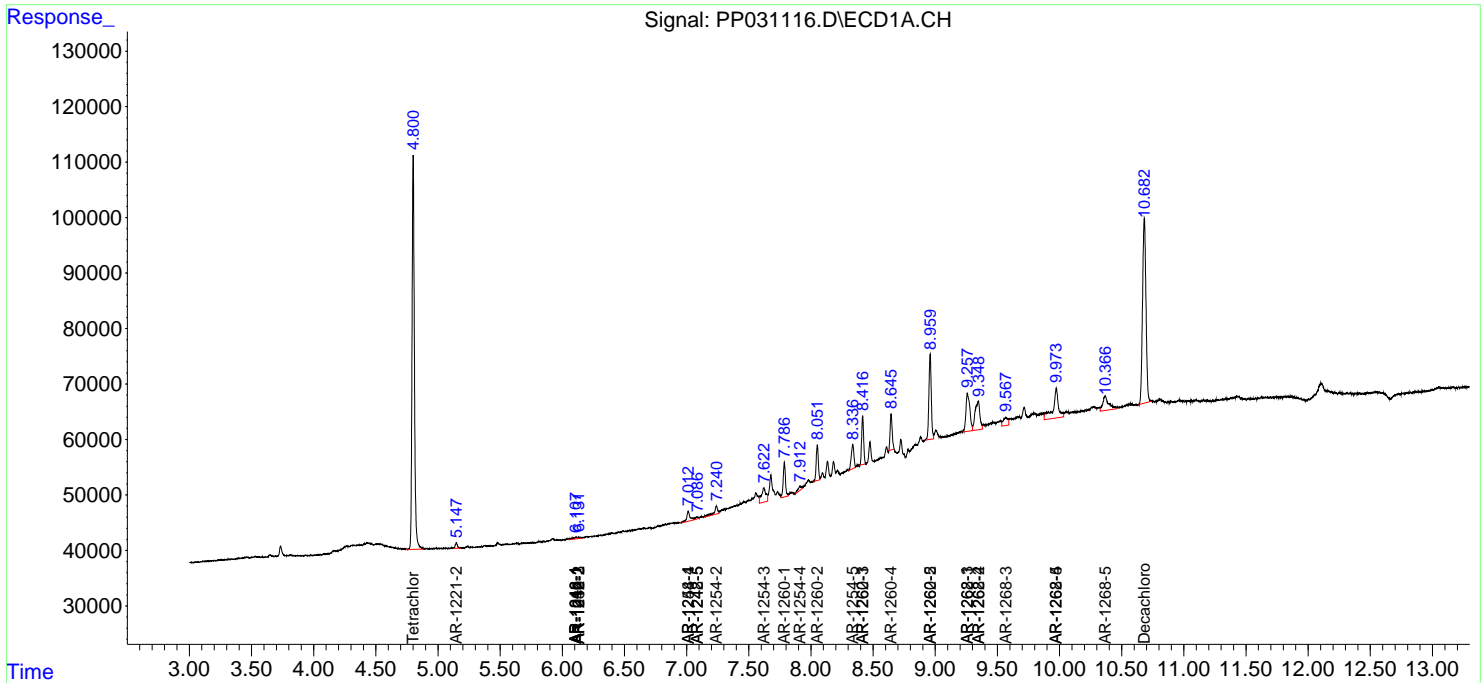
(f)=RT Delta > 1/2 Window (#)=Amounts differ by > 25% (m)=manual int.

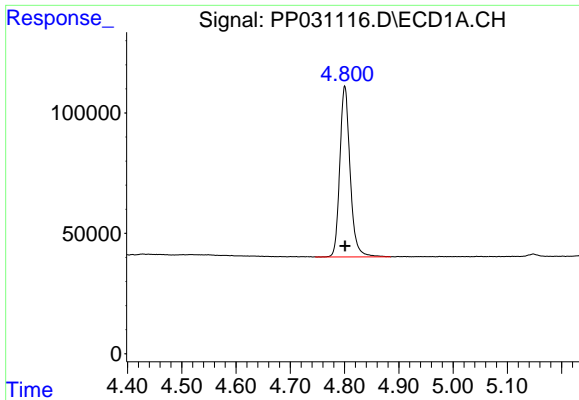
Data Path : Z:\pestpcbsrv\HPCHEM1\ECD\_P\Data\PP110420\  
 Data File : PP031116.D  
 Signal(s) : Signal #1: ECD1A.CH Signal #2: ECD2B.CH  
 Acq On : 04 Nov 2020 17:51  
 Operator : DD\AJ  
 Sample : L4214-02  
 Misc : AR1262 LOQ 50 PPB  
 ALS Vial : 29 Sample Multiplier: 1

**Instrument :**  
 ECD\_P  
**Client Sampled :**  
 LOQ-SOIL-02-QT4-2020

Integration File signal 1: autoint1.e  
 Integration File signal 2: autoint2.e  
 Quant Time: Nov 05 05:06:10 2020  
 Quant Method : Z:\pestpcbsrv\HPCHEM1\ECD\_P\methods\PP110420.M  
 Quant Title : GC EXTRACTABLES  
 QLast Update : Wed Nov 04 08:24:38 2020  
 Response via : Initial Calibration  
 Integrator: ChemStation 6890 Scale Mode: Small noise peaks clipped

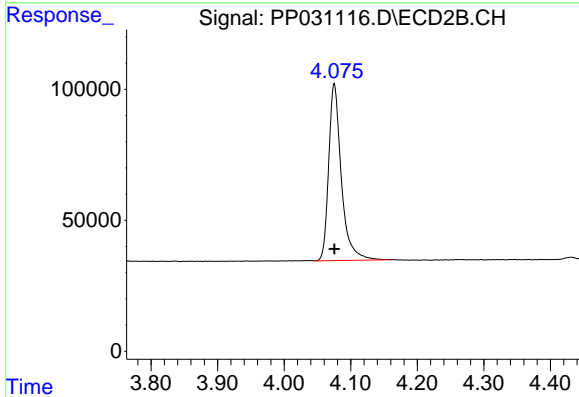
Volume Inj. : 2 µl  
 Signal #1 Phase : ZB-MR1 Signal #2 Phase: ZB-MR2  
 Signal #1 Info : 30Mx0.32mmx 0.50µ Signal #2 Info : 30M x 0.32mm x 0.25µm



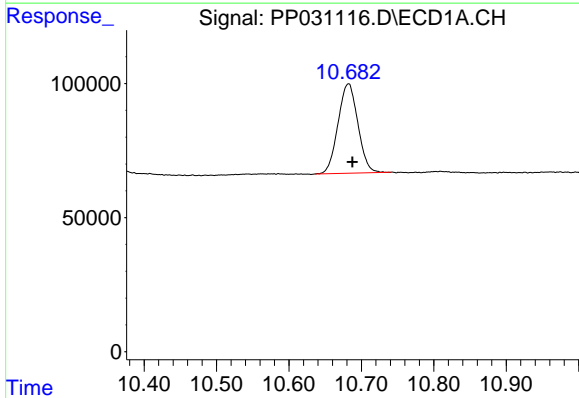


#1 Tetrachloro-m-xylene  
 R.T.: 4.800 min  
 Delta R.T.: 0.000 min  
 Response: 938193  
 Conc: 14.05 ng/ml

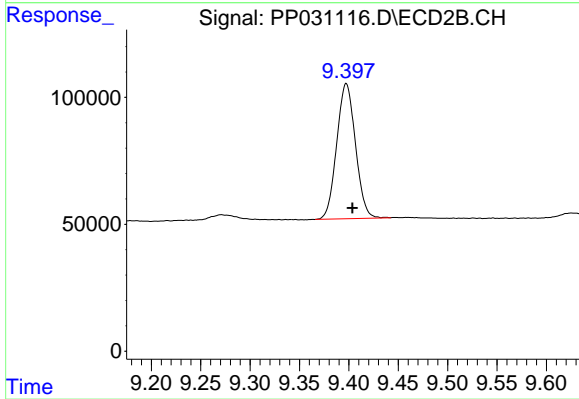
**Instrument :**  
 ECD\_P  
**ClientSampleId :**  
 LOQ-SOIL-02-QT4-2020



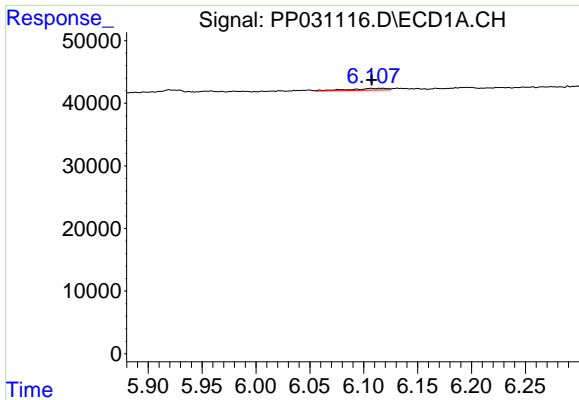
#1 Tetrachloro-m-xylene  
 R.T.: 4.075 min  
 Delta R.T.: 0.000 min  
 Response: 889534  
 Conc: 13.38 ng/ml



#2 Decachlorobiphenyl  
 R.T.: 10.682 min  
 Delta R.T.: -0.005 min  
 Response: 634979  
 Conc: 15.88 ng/ml

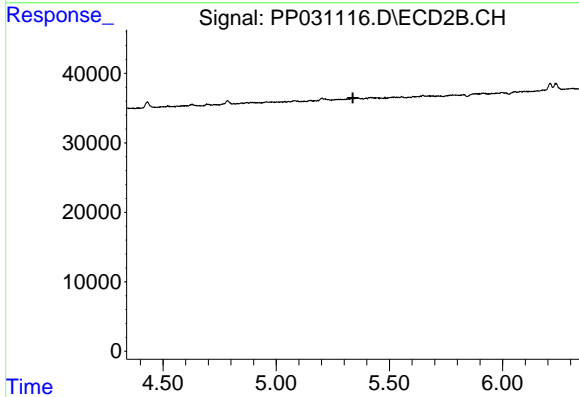


#2 Decachlorobiphenyl  
 R.T.: 9.397 min  
 Delta R.T.: -0.006 min  
 Response: 705100  
 Conc: 16.89 ng/ml

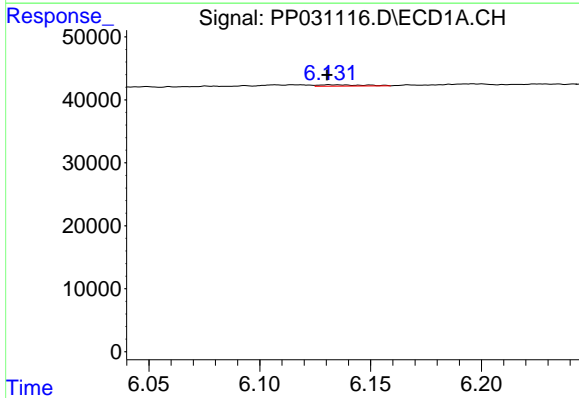


#3 AR-1016-1  
 R.T.: 6.107 min  
 Delta R.T.: 0.000 min  
 Response: 7159  
 Conc: 3.68 ng/ml

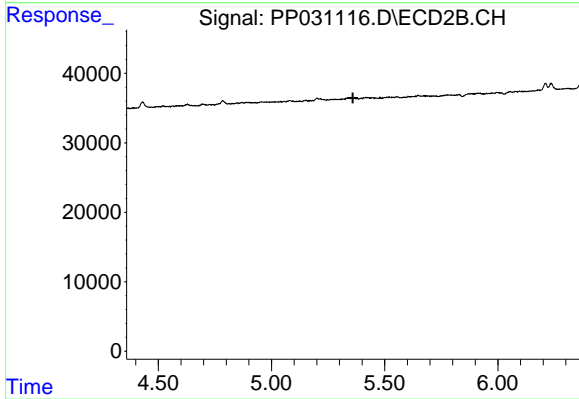
Instrument :  
 ECD\_P  
 ClientSampleId :  
 LOQ-SOIL-02-QT4-2020



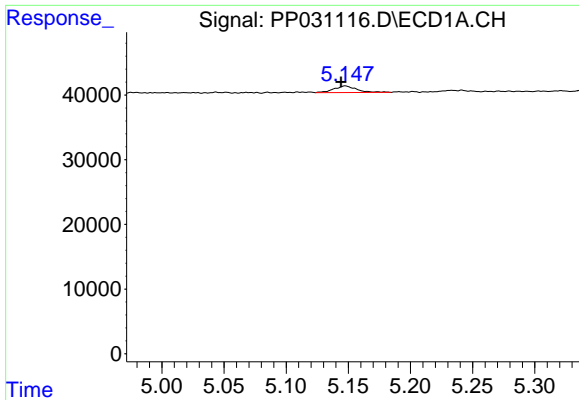
#3 AR-1016-1  
 R.T.: 0.000 min  
 Exp R.T. : 5.339 min  
 Response: 0  
 Conc: N.D.



#4 AR-1016-2  
 R.T.: 6.132 min  
 Delta R.T.: 0.001 min  
 Response: 3020  
 Conc: 1.06 ng/ml



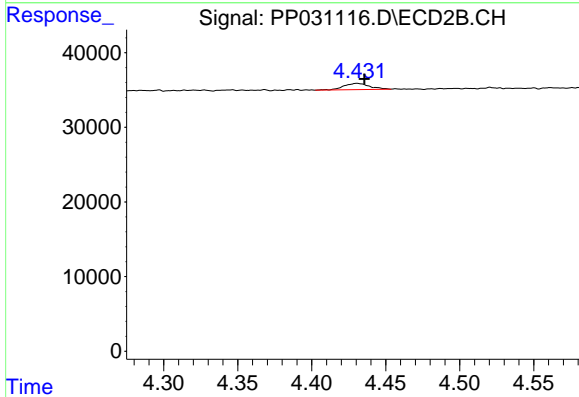
#4 AR-1016-2  
 R.T.: 0.000 min  
 Exp R.T. : 5.360 min  
 Response: 0  
 Conc: N.D.



#9 AR-1221-2

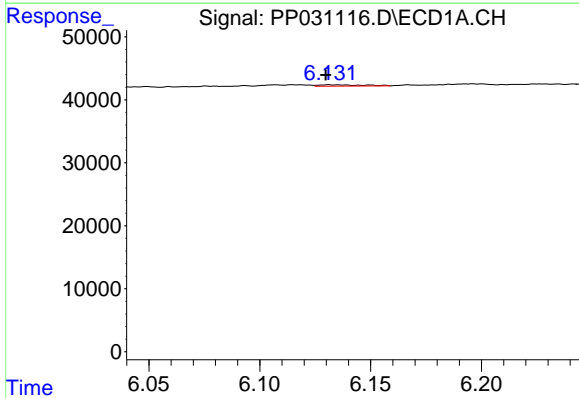
R.T.: 5.148 min  
 Delta R.T.: 0.003 min  
 Response: 12845  
 Conc: 28.60 ng/ml

Instrument :  
 ECD\_P  
 ClientSampleId :  
 LOQ-SOIL-02-QT4-2020



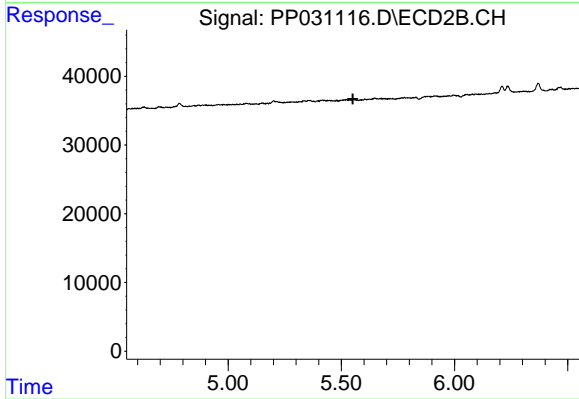
#9 AR-1221-2

R.T.: 4.431 min  
 Delta R.T.: -0.005 min  
 Response: 10049  
 Conc: 24.22 ng/ml



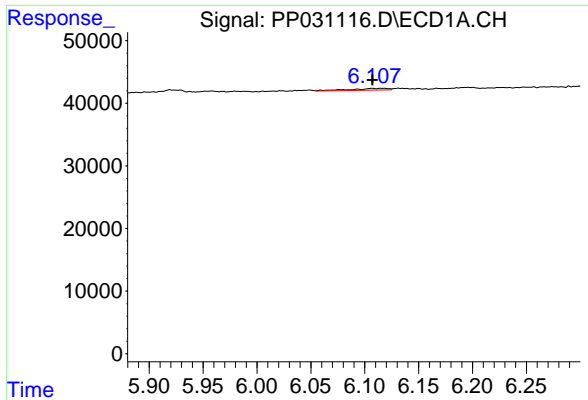
#13 AR-1232-3

R.T.: 6.132 min  
 Delta R.T.: 0.002 min  
 Response: 3020  
 Conc: 2.70 ng/ml



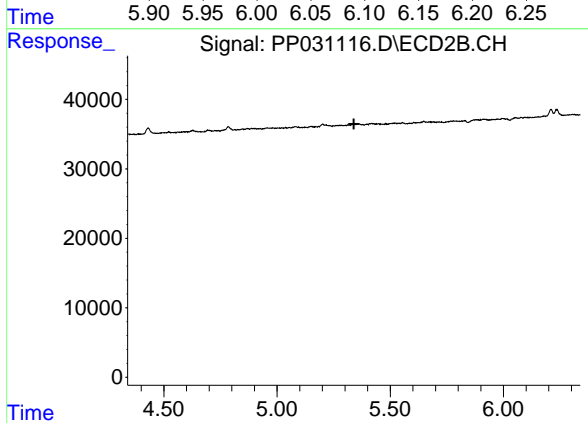
#13 AR-1232-3

R.T.: 0.000 min  
 Exp R.T. : 5.551 min  
 Response: 0  
 Conc: N.D.

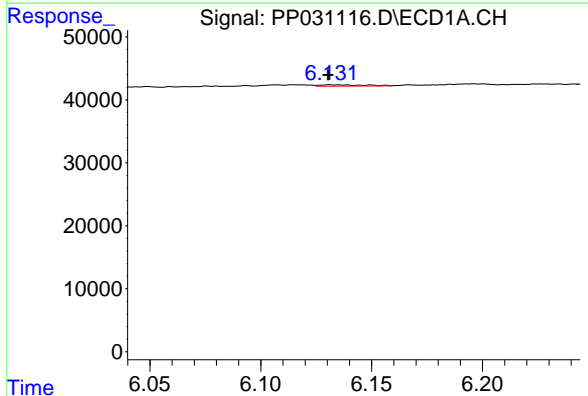


#16 AR-1242-1  
 R.T.: 6.107 min  
 Delta R.T.: 0.000 min  
 Response: 7159  
 Conc: 5.33 ng/ml

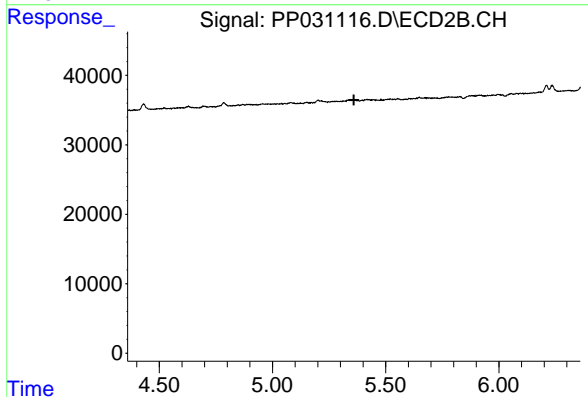
Instrument :  
 ECD\_P  
 ClientSampleId :  
 LOQ-SOIL-02-QT4-2020



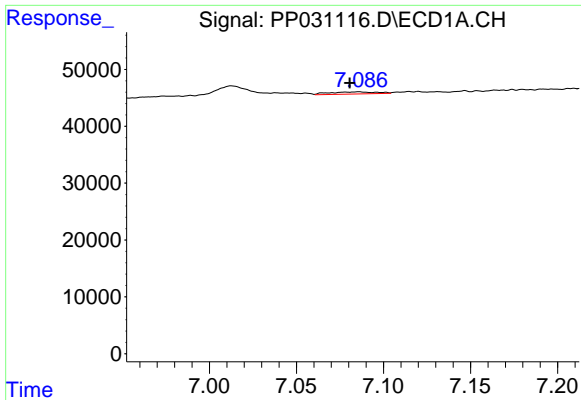
#16 AR-1242-1  
 R.T.: 0.000 min  
 Exp R.T. : 5.339 min  
 Response: 0  
 Conc: N.D.



#17 AR-1242-2  
 R.T.: 6.132 min  
 Delta R.T.: 0.001 min  
 Response: 3020  
 Conc: 1.55 ng/ml



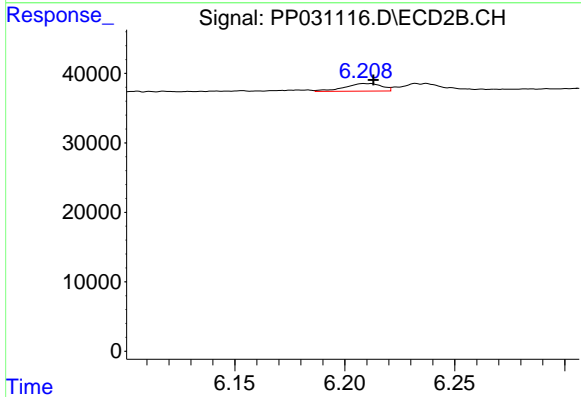
#17 AR-1242-2  
 R.T.: 0.000 min  
 Exp R.T. : 5.359 min  
 Response: 0  
 Conc: N.D.



#20 AR-1242-5

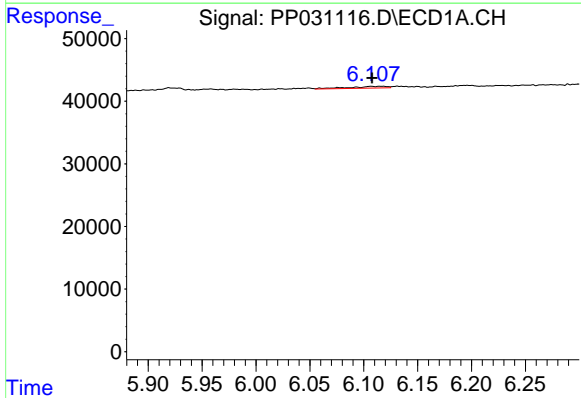
R.T.: 7.086 min  
 Delta R.T.: 0.005 min  
 Response: 6968  
 Conc: 7.30 ng/ml

Instrument :  
 ECD\_P  
 ClientSampleId :  
 LOQ-SOIL-02-QT4-2020



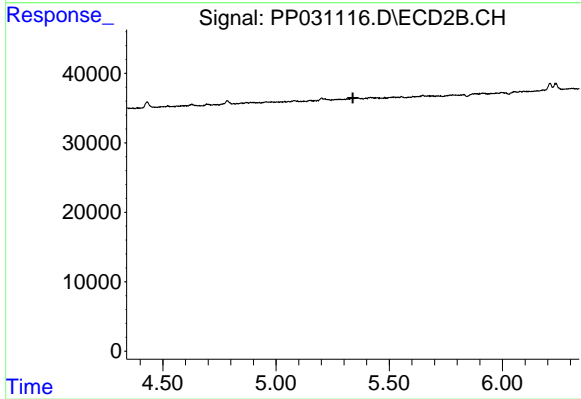
#20 AR-1242-5

R.T.: 6.209 min  
 Delta R.T.: -0.004 min  
 Response: 12835  
 Conc: 12.89 ng/ml



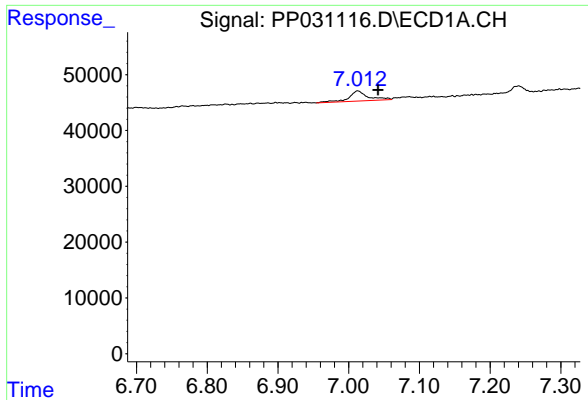
#21 AR-1248-1

R.T.: 6.107 min  
 Delta R.T.: 0.000 min  
 Response: 7159  
 Conc: 7.42 ng/ml



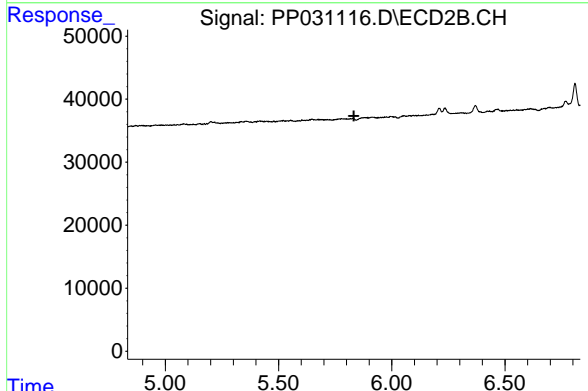
#21 AR-1248-1

R.T.: 0.000 min  
 Exp R.T. : 5.339 min  
 Response: 0  
 Conc: N.D.

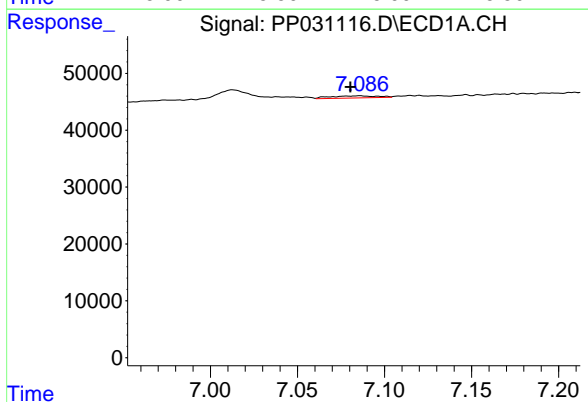


#24 AR-1248-4  
 R.T.: 7.013 min  
 Delta R.T.: -0.029 min  
 Response: 34244  
 Conc: 22.47 ng/ml

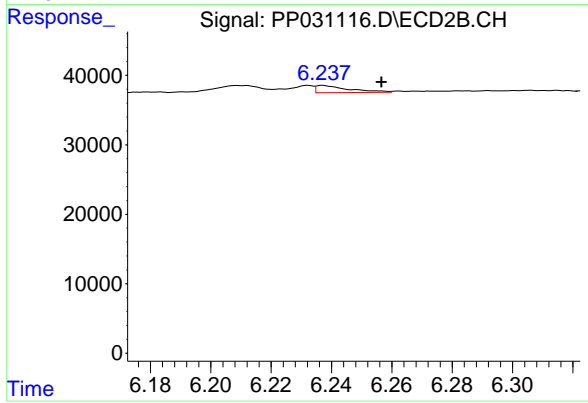
**Instrument :**  
 ECD\_P  
**ClientSampleId :**  
 LOQ-SOIL-02-QT4-2020



#24 AR-1248-4  
 R.T.: 0.000 min  
 Exp R.T. : 5.833 min  
 Response: 0  
 Conc: N.D.

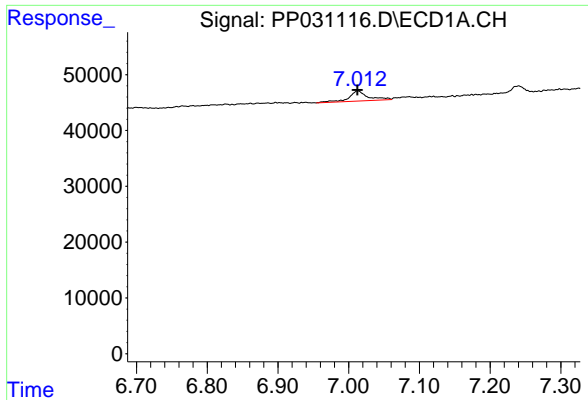


#25 AR-1248-5  
 R.T.: 7.086 min  
 Delta R.T.: 0.005 min  
 Response: 6968  
 Conc: 4.59 ng/ml



#25 AR-1248-5  
 R.T.: 6.237 min  
 Delta R.T.: -0.019 min  
 Response: 7703  
 Conc: 6.10 ng/ml

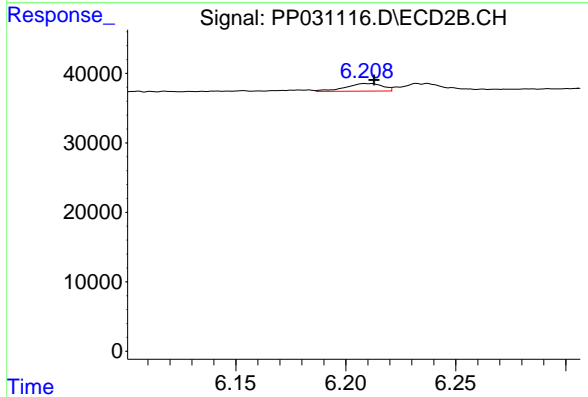




#26 AR-1254-1

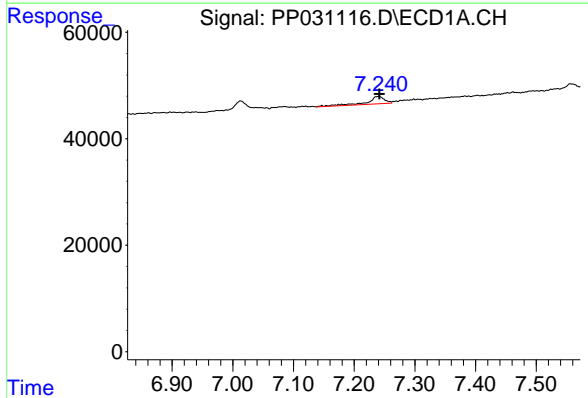
R.T.: 7.013 min  
 Delta R.T.: 0.000 min  
 Response: 34244  
 Conc: 24.39 ng/ml

Instrument :  
 ECD\_P  
 ClientSampleId :  
 LOQ-SOIL-02-QT4-2020



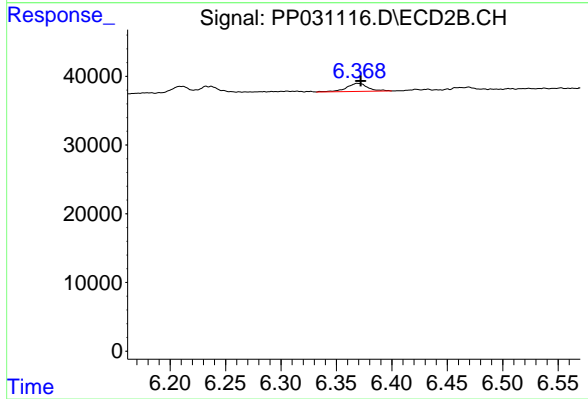
#26 AR-1254-1

R.T.: 6.209 min  
 Delta R.T.: -0.004 min  
 Response: 12835  
 Conc: 6.53 ng/ml



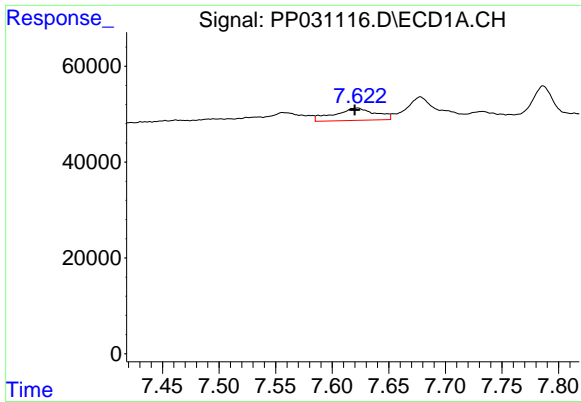
#27 AR-1254-2

R.T.: 7.241 min  
 Delta R.T.: -0.001 min  
 Response: 29249  
 Conc: 14.03 ng/ml



#27 AR-1254-2

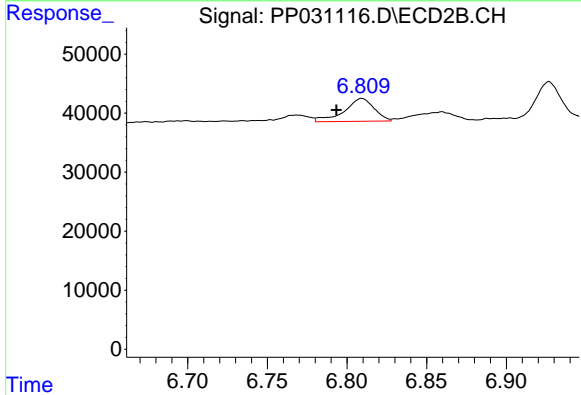
R.T.: 6.369 min  
 Delta R.T.: -0.003 min  
 Response: 15718  
 Conc: 9.57 ng/ml



#28 AR-1254-3

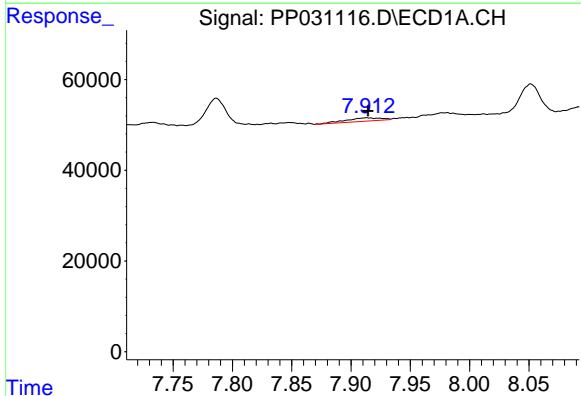
R.T.: 7.622 min  
 Delta R.T.: 0.002 min  
 Response: 64597  
 Conc: 27.99 ng/ml

**Instrument :**  
 ECD\_P  
**ClientSampleId :**  
 LOQ-SOIL-02-QT4-2020



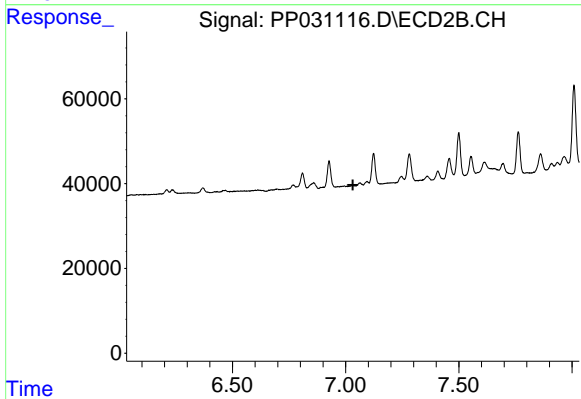
#28 AR-1254-3

R.T.: 6.809 min  
 Delta R.T.: 0.016 min  
 Response: 50159  
 Conc: 18.32 ng/ml



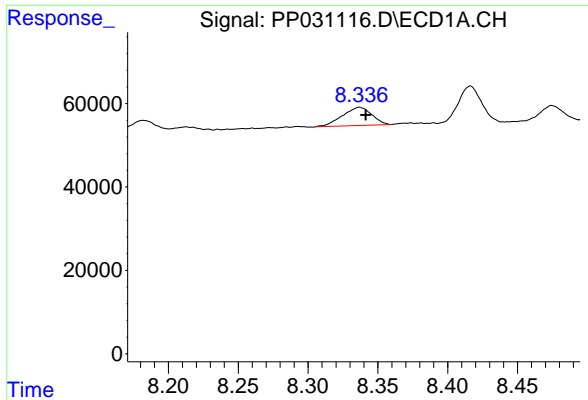
#29 AR-1254-4

R.T.: 7.913 min  
 Delta R.T.: -0.002 min  
 Response: 15097  
 Conc: 9.22 ng/ml



#29 AR-1254-4

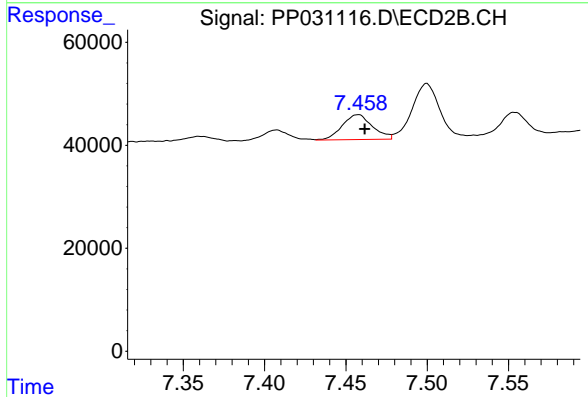
R.T.: 0.000 min  
 Exp R.T. : 7.032 min  
 Response: 0  
 Conc: N.D.



#30 AR-1254-5

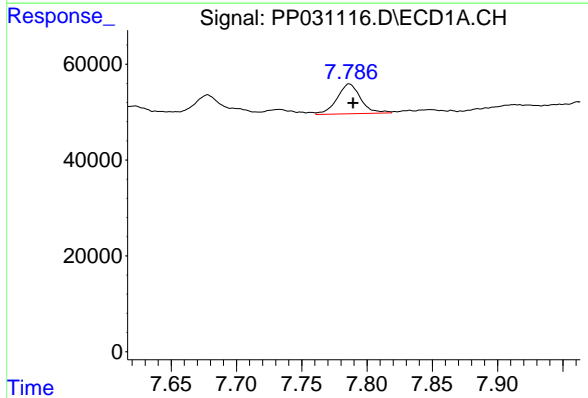
R.T.: 8.337 min  
 Delta R.T.: -0.005 min  
 Response: 63862  
 Conc: 37.83 ng/ml

Instrument :  
 ECD\_P  
 ClientSampleId :  
 LOQ-SOIL-02-QT4-2020



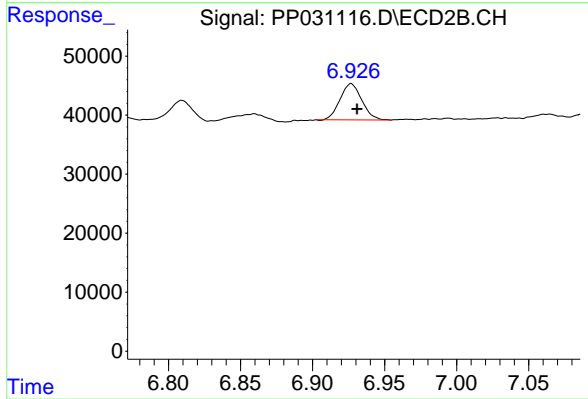
#30 AR-1254-5

R.T.: 7.458 min  
 Delta R.T.: -0.004 min  
 Response: 62524  
 Conc: 28.56 ng/ml



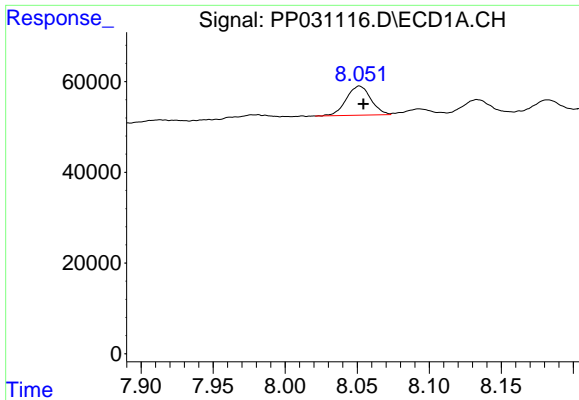
#31 AR-1260-1

R.T.: 7.786 min  
 Delta R.T.: -0.003 min  
 Response: 78682  
 Conc: 42.84 ng/ml



#31 AR-1260-1

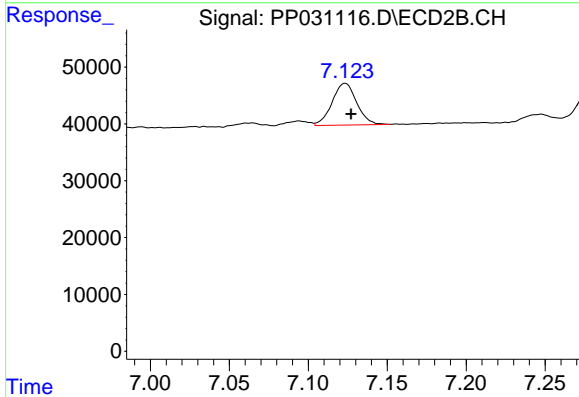
R.T.: 6.927 min  
 Delta R.T.: -0.004 min  
 Response: 64608  
 Conc: 32.24 ng/ml



#32 AR-1260-2

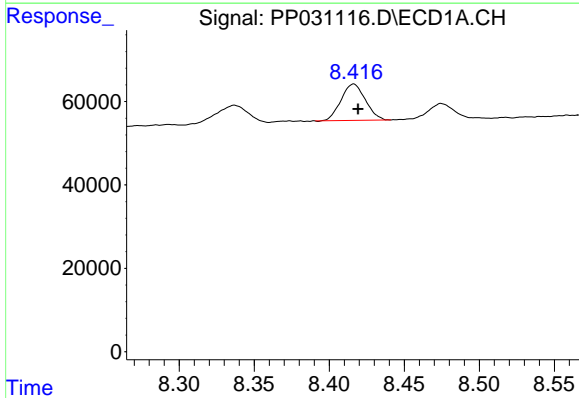
R.T.: 8.052 min  
 Delta R.T.: -0.003 min  
 Response: 75726  
 Conc: 35.15 ng/ml

Instrument :  
 ECD\_P  
 ClientSampleId :  
 LOQ-SOIL-02-QT4-2020



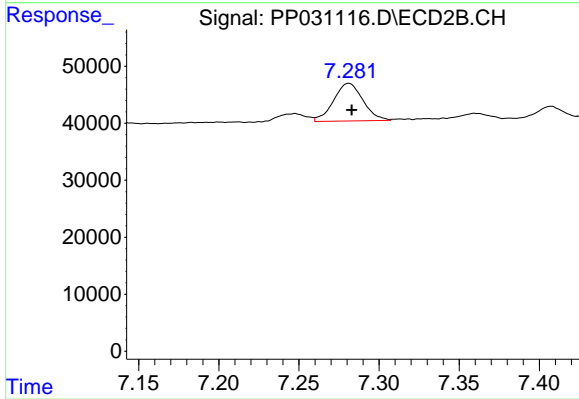
#32 AR-1260-2

R.T.: 7.123 min  
 Delta R.T.: -0.004 min  
 Response: 79926  
 Conc: 34.13 ng/ml



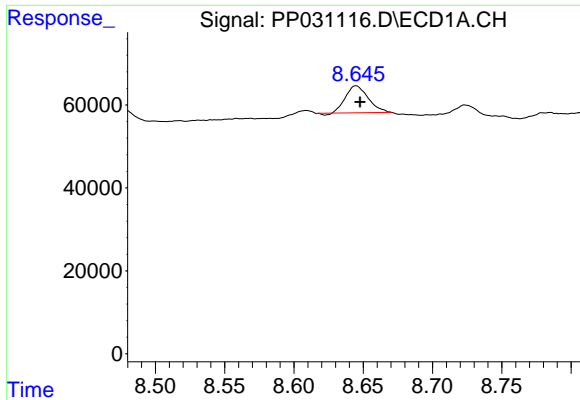
#33 AR-1260-3

R.T.: 8.416 min  
 Delta R.T.: -0.003 min  
 Response: 98248  
 Conc: 59.69 ng/ml



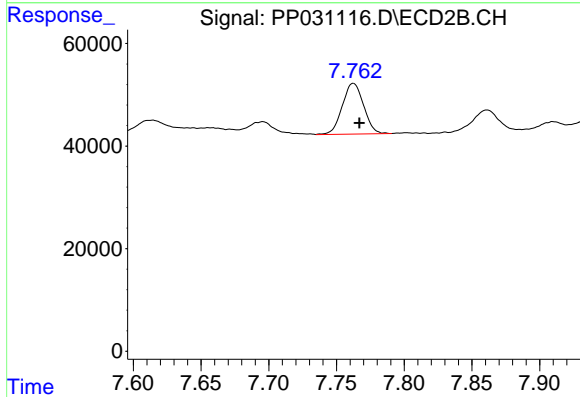
#33 AR-1260-3

R.T.: 7.281 min  
 Delta R.T.: -0.002 min  
 Response: 84281  
 Conc: 37.07 ng/ml

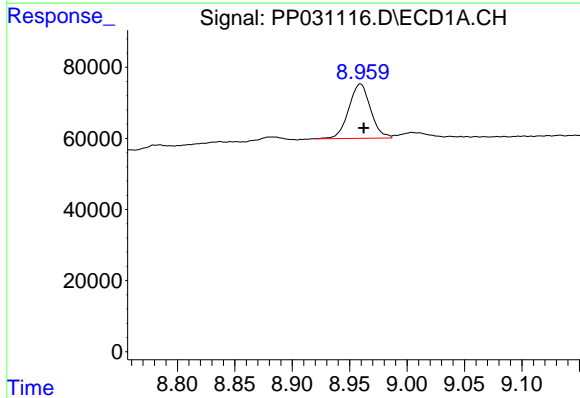


#34 AR-1260-4  
 R.T.: 8.645 min  
 Delta R.T.: -0.003 min  
 Response: 72995  
 Conc: 39.26 ng/ml

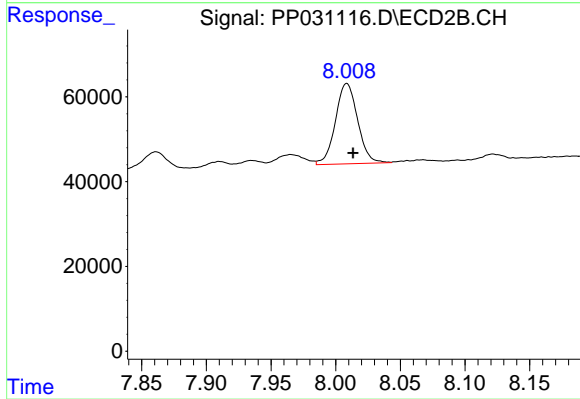
Instrument :  
 ECD\_P  
 ClientSampleId :  
 LOQ-SOIL-02-QT4-2020



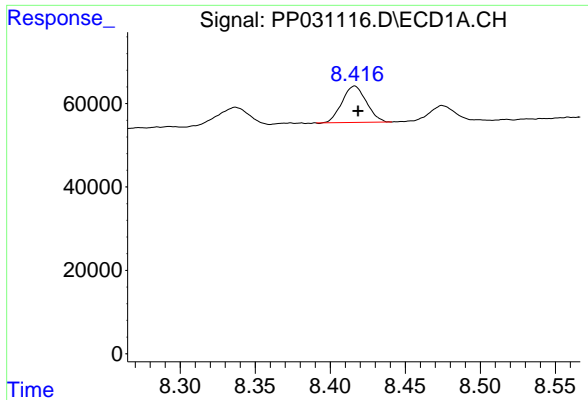
#34 AR-1260-4  
 R.T.: 7.762 min  
 Delta R.T.: -0.004 min  
 Response: 108614  
 Conc: 59.53 ng/ml



#35 AR-1260-5  
 R.T.: 8.959 min  
 Delta R.T.: -0.003 min  
 Response: 202348  
 Conc: 53.67 ng/ml



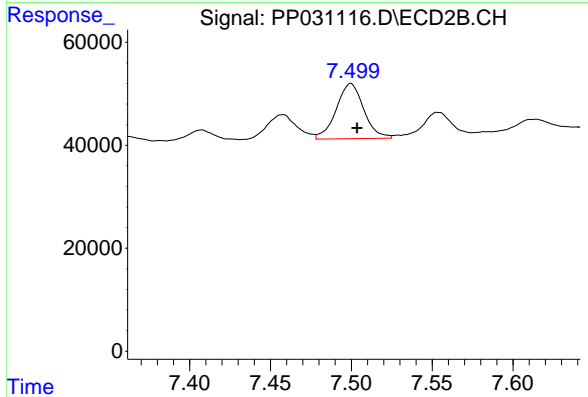
#35 AR-1260-5  
 R.T.: 8.009 min  
 Delta R.T.: -0.005 min  
 Response: 226088  
 Conc: 50.24 ng/ml



#36 AR-1262-1

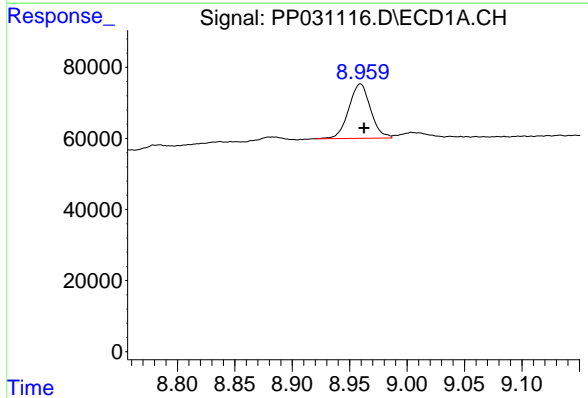
R.T.: 8.416 min  
 Delta R.T.: -0.002 min  
 Response: 98248  
 Conc: 48.90 ng/ml

**Instrument :**  
 ECD\_P  
**ClientSampleId :**  
 LOQ-SOIL-02-QT4-2020



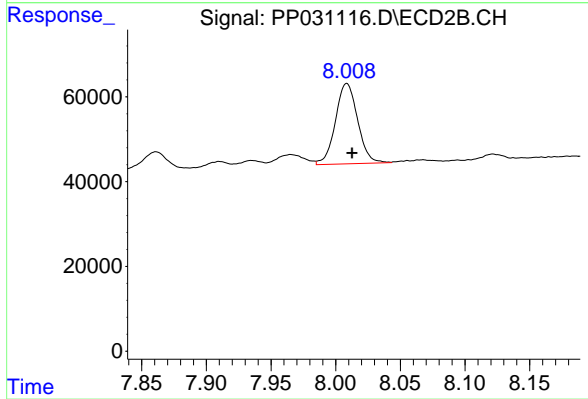
#36 AR-1262-1

R.T.: 7.500 min  
 Delta R.T.: -0.004 min  
 Response: 127016  
 Conc: 54.68 ng/ml



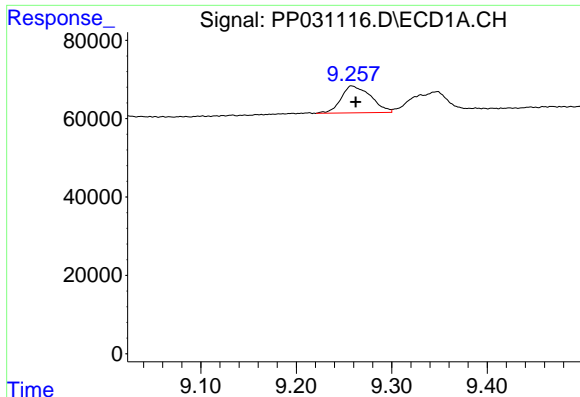
#37 AR-1262-2

R.T.: 8.959 min  
 Delta R.T.: -0.003 min  
 Response: 202348  
 Conc: 55.67 ng/ml



#37 AR-1262-2

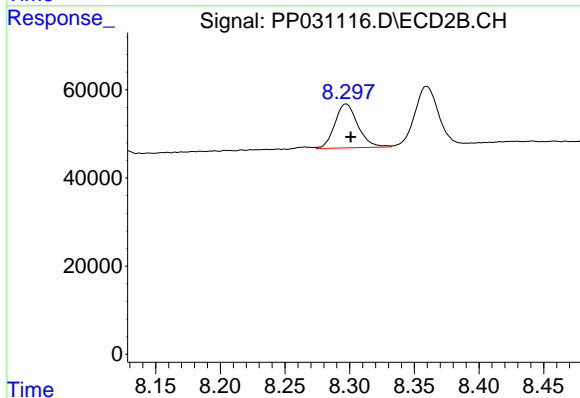
R.T.: 8.009 min  
 Delta R.T.: -0.004 min  
 Response: 226088  
 Conc: 54.53 ng/ml



#38 AR-1262-3

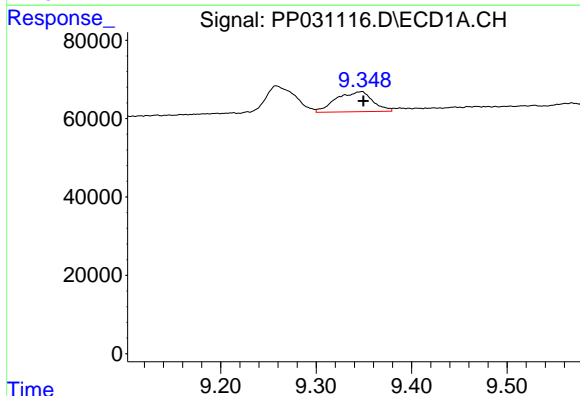
R.T.: 9.258 min  
 Delta R.T.: -0.004 min  
 Response: 149174  
 Conc: 57.71 ng/ml

Instrument :  
 ECD\_P  
 ClientSampleId :  
 LOQ-SOIL-02-QT4-2020



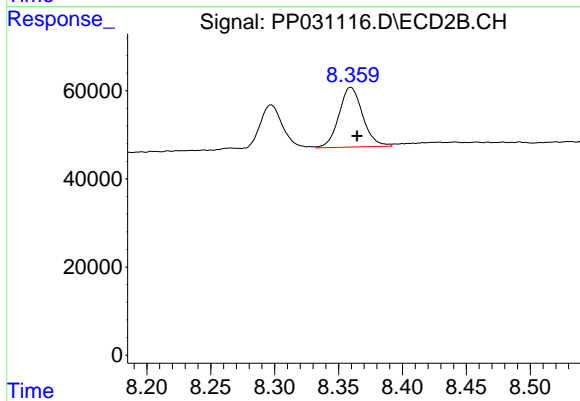
#38 AR-1262-3

R.T.: 8.297 min  
 Delta R.T.: -0.004 min  
 Response: 123065  
 Conc: 72.59 ng/ml



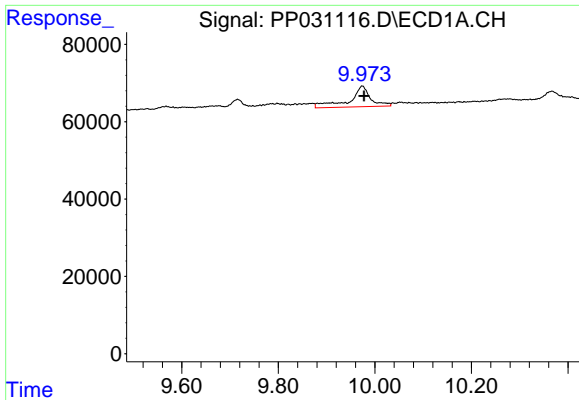
#39 AR-1262-4

R.T.: 9.348 min  
 Delta R.T.: -0.002 min  
 Response: 136710  
 Conc: 66.40 ng/ml



#39 AR-1262-4

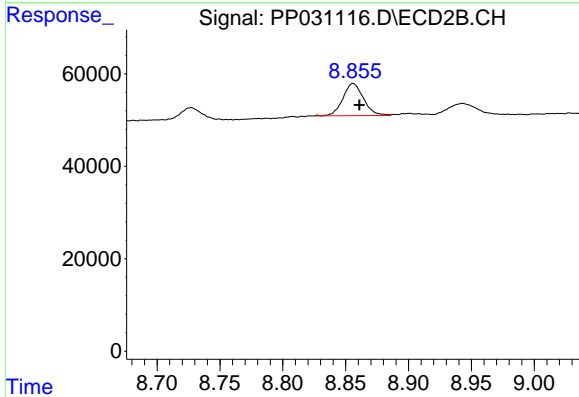
R.T.: 8.360 min  
 Delta R.T.: -0.005 min  
 Response: 175174  
 Conc: 55.16 ng/ml



#40 AR-1262-5

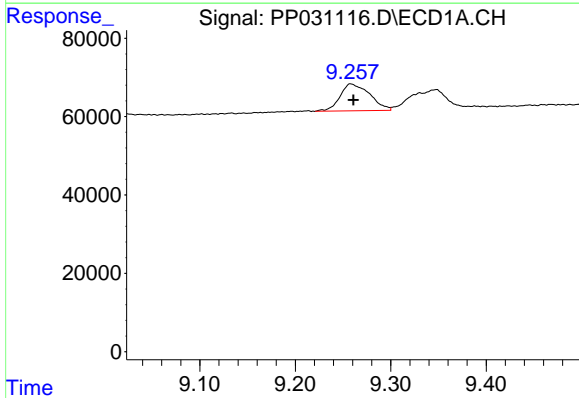
R.T.: 9.974 min  
 Delta R.T.: -0.004 min  
 Response: 162270  
 Conc: 114.56 ng/ml

**Instrument :**  
 ECD\_P  
**ClientSampleId :**  
 LOQ-SOIL-02-QT4-2020



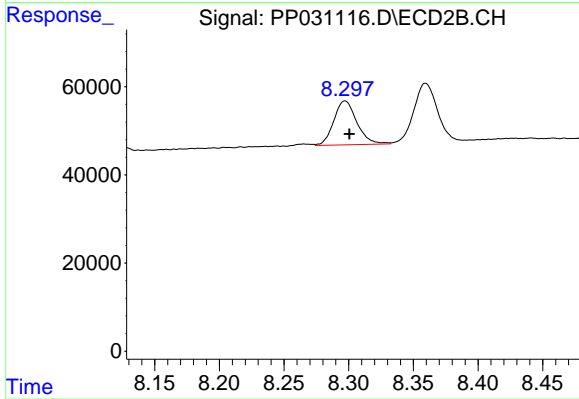
#40 AR-1262-5

R.T.: 8.856 min  
 Delta R.T.: -0.005 min  
 Response: 79478  
 Conc: 49.45 ng/ml



#41 AR-1268-1

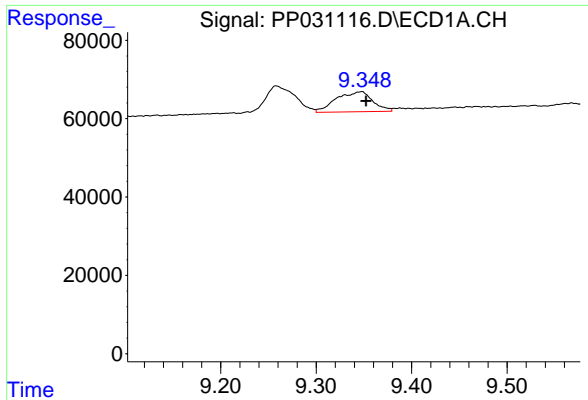
R.T.: 9.258 min  
 Delta R.T.: -0.003 min  
 Response: 149174  
 Conc: 34.15 ng/ml



#41 AR-1268-1

R.T.: 8.297 min  
 Delta R.T.: -0.003 min  
 Response: 123065  
 Conc: 25.14 ng/ml

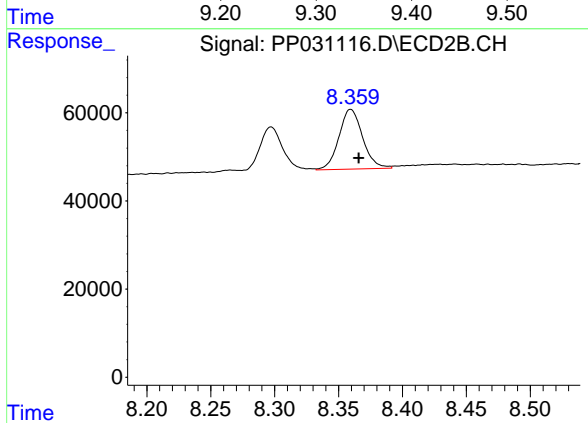




#42 AR-1268-2

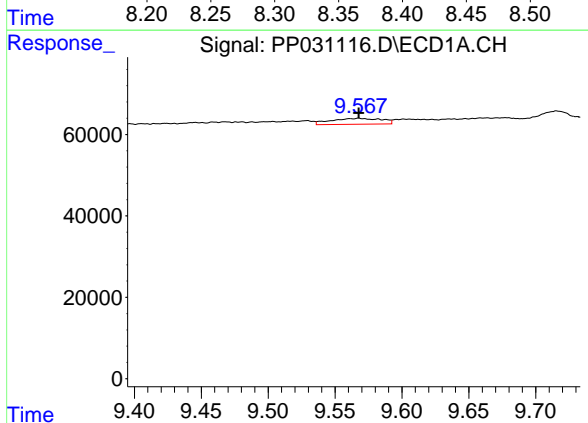
R.T.: 9.348 min  
 Delta R.T.: -0.005 min  
 Response: 136710  
 Conc: 31.79 ng/ml

Instrument :  
 ECD\_P  
 ClientSampleId :  
 LOQ-SOIL-02-QT4-2020



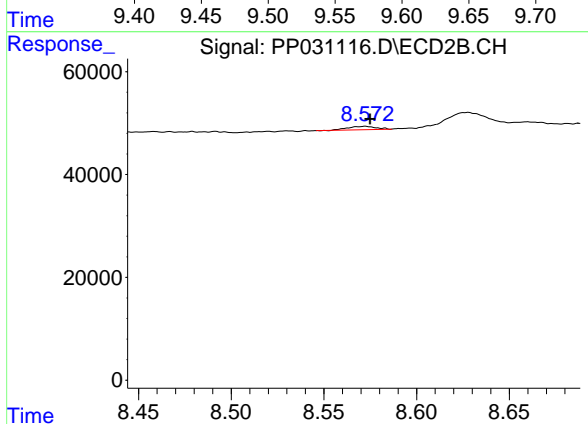
#42 AR-1268-2

R.T.: 8.360 min  
 Delta R.T.: -0.006 min  
 Response: 175174  
 Conc: 36.83 ng/ml



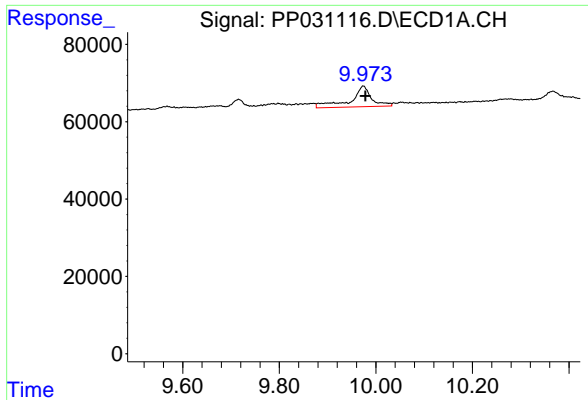
#43 AR-1268-3

R.T.: 9.568 min  
 Delta R.T.: 0.000 min  
 Response: 38582  
 Conc: 10.67 ng/ml



#43 AR-1268-3

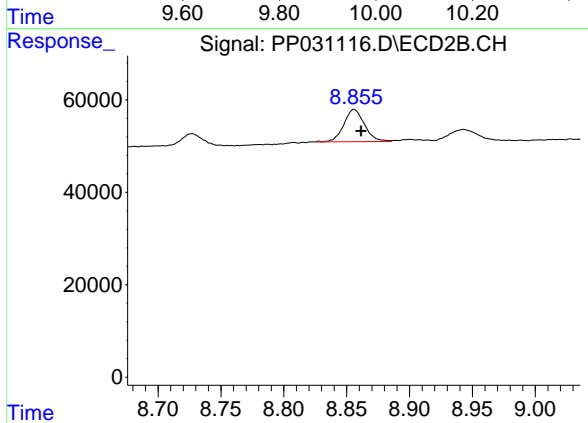
R.T.: 8.572 min  
 Delta R.T.: -0.003 min  
 Response: 7045  
 Conc: 1.76 ng/ml



#44 AR-1268-4

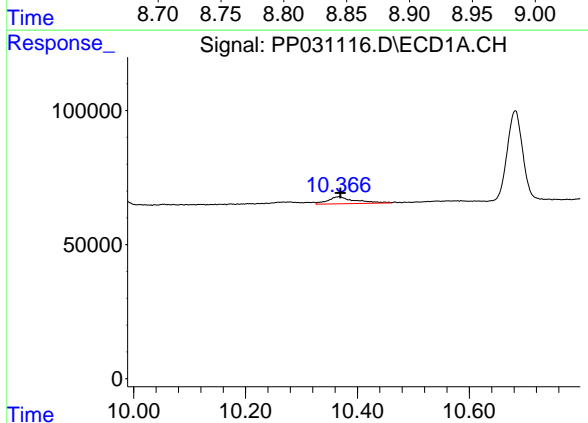
R.T.: 9.974 min  
 Delta R.T.: -0.004 min  
 Response: 162270  
 Conc: 102.45 ng/ml

**Instrument :**  
 ECD\_P  
**ClientSampled :**  
 LOQ-SOIL-02-QT4-2020



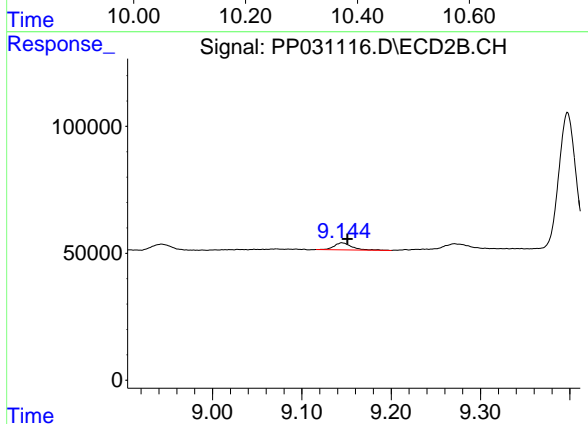
#44 AR-1268-4

R.T.: 8.856 min  
 Delta R.T.: -0.006 min  
 Response: 79478  
 Conc: 46.91 ng/ml



#45 AR-1268-5

R.T.: 10.367 min  
 Delta R.T.: -0.002 min  
 Response: 88884  
 Conc: 7.43 ng/ml



#45 AR-1268-5

R.T.: 9.145 min  
 Delta R.T.: -0.006 min  
 Response: 37196  
 Conc: 2.77 ng/ml