

Data Path : Z:\pestpcbsrv\HPCHEM1\ECD\_P\Data\PP110420\  
 Data File : PP031130.D  
 Signal(s) : Signal #1: ECD1A.CH Signal #2: ECD2B.CH  
 Acq On : 04 Nov 2020 21:44  
 Operator : DD\AJ  
 Sample : AR1660CCC500  
 Misc :  
 ALS Vial : 3 Sample Multiplier: 1

Instrument :  
 ECD\_P  
 ClientSampled :

Integration File signal 1: autoint1.e  
 Integration File signal 2: autoint2.e  
 Quant Time: Nov 05 07:46:42 2020  
 Quant Method : Z:\pestpcbsrv\HPCHEM1\ECD\_P\methods\PP110420.M  
 Quant Title : GC EXTRACTABLES  
 QLast Update : Wed Nov 04 08:24:38 2020  
 Response via : Initial Calibration  
 Integrator: ChemStation 6890 Scale Mode: Small noise peaks clipped

Volume Inj. : 2 µl  
 Signal #1 Phase : ZB-MR1 Signal #2 Phase: ZB-MR2  
 Signal #1 Info : 30Mx0.32mmx 0.50µ Signal #2 Info : 30M x 0.32mm x 0.25µm

Compound	RT#1	RT#2	Resp#1	Resp#2	ng/ml	ng/ml
System Monitoring Compounds						
1) SA Tetrachlo...	4.799	4.074	3037384	3030592	45.476	45.594
2) SA Decachlor...	10.679	9.395	1907977	2154874	47.719	51.606
Target Compounds						
3) L1 AR-1016-1	6.104	5.335	885146	844337	454.602	455.101
4) L1 AR-1016-2	6.127	5.355	1301764	1236384	456.000	454.855
5) L1 AR-1016-3	6.193	5.547	806632	670707	463.114	529.536
6) L1 AR-1016-4	6.299	5.599	674230	490522	466.606	531.878
7) L1 AR-1016-5	6.613	5.828	625691	613844	501.924	467.680
8) L2 AR-1221-1	5.041	4.332	93067	85026	154.120	150.967
9) L2 AR-1221-2	5.143	4.432	142673	131552	317.639	317.084
10) L2 AR-1221-3	5.228	4.521	521733	508564	386.564	387.799
11) L3 AR-1232-1	5.228	4.521	521733	508564	426.596	424.561
12) L3 AR-1232-2	5.812	5.355	685578	1236384	1129.018	1163.440
13) L3 AR-1232-3	6.127	5.547	1301764	670707	1165.283	1308.194
14) L3 AR-1232-4	6.299	5.644	674230	603194	1187.967	1381.087
15) L3 AR-1232-5	6.399	5.828	419025	613844	1209.273	1271.178
16) L4 AR-1242-1	6.104	5.335	885146	844337	658.841	656.086
17) L4 AR-1242-2	6.127	5.355	1301764	1236384	666.546	662.106
18) L4 AR-1242-3	6.193	5.547	806632	670707	661.407	714.387
19) L4 AR-1242-4	6.299	5.644	674230	603194	665.502	695.562
20) L4 AR-1242-5	7.078	6.209	95391	482780	99.963	484.958 #
21) L5 AR-1248-1	6.104	5.335	885146	844337	917.915	912.498
22) L5 AR-1248-2	6.399	5.599	419025	490522	362.295	445.078
23) L5 AR-1248-3	6.613	5.644	625691	603194	439.764	498.365
24) L5 AR-1248-4	7.039	5.828	113127	613844	74.225	415.933 #
25) L5 AR-1248-5	7.078	6.252	95391	95214	62.878	75.391
26) L6 AR-1254-1	7.010	6.209	400381	482780	285.172	245.478
27) L6 AR-1254-2	7.238	6.367	424162	421213	203.487	256.333 #
28) L6 AR-1254-3	7.617	6.808	280598	788158	121.574	287.825 #
29) L6 AR-1254-4	7.910	7.028	197452	104362	120.604	64.676 #
30) L6 AR-1254-5	8.337	7.456	1253962	1380715	742.815	630.611
31) L7 AR-1260-1	7.785	6.925	915685	1012560	498.512	505.226
32) L7 AR-1260-2	8.050	7.122	1069004	1200881	496.214	512.799
33) L7 AR-1260-3	8.415	7.278	824206	1166668	500.711	513.161
34) L7 AR-1260-4	8.644	7.761	997643	991468	536.554	543.432
35) L7 AR-1260-5	8.957	8.008	1954835	2433231	518.462	540.673
36) L8 AR-1262-1	8.415	7.498	824206	1090886	410.214	469.658
37) L8 AR-1262-2	8.957	8.008	1954835	2433231	537.841	586.920
38) L8 AR-1262-3	9.272	8.295	1298983	589871	502.494	347.918 #
39) L8 AR-1262-4	9.344	8.357	396779	1863916	192.720	586.957 #
40) L8 AR-1262-5	9.974	8.855	642612	702897	453.656	437.333
41) L9 AR-1268-1	9.272	8.295	1298983	589871	297.373	120.491 #

Data Path : Z:\pestpcbsrv\HPCHEM1\ECD\_P\Data\PP110420\  
 Data File : PP031130.D  
 Signal(s) : Signal #1: ECD1A.CH Signal #2: ECD2B.CH  
 Acq On : 04 Nov 2020 21:44  
 Operator : DD\AJ  
 Sample : AR1660CCC500  
 Misc :  
 ALS Vial : 3 Sample Multiplier: 1

Instrument :  
 ECD\_P  
 ClientSampleId :

Integration File signal 1: autoint1.e  
 Integration File signal 2: autoint2.e  
 Quant Time: Nov 05 07:46:42 2020  
 Quant Method : Z:\pestpcbsrv\HPCHEM1\ECD\_P\methods\PP110420.M  
 Quant Title : GC EXTRACTABLES  
 QLast Update : Wed Nov 04 08:24:38 2020  
 Response via : Initial Calibration  
 Integrator: ChemStation 6890 Scale Mode: Small noise peaks clipped

Volume Inj. : 2 µl  
 Signal #1 Phase : ZB-MR1 Signal #2 Phase: ZB-MR2  
 Signal #1 Info : 30Mx0.32mmx 0.50µ Signal #2 Info : 30M x 0.32mm x 0.25µm

	Compound	RT#1	RT#2	Resp#1	Resp#2	ng/ml	ng/ml
42)	L9 AR-1268-2	9.344	8.357	396779	1863916	92.271	391.913 #
43)	L9 AR-1268-3	9.562	8.568	31414	32406	8.686	8.099
44)	L9 AR-1268-4	9.974	8.855	642612	702897	405.722	414.862
45)	L9 AR-1268-5	10.363	9.144	224613	207220	18.782	15.452

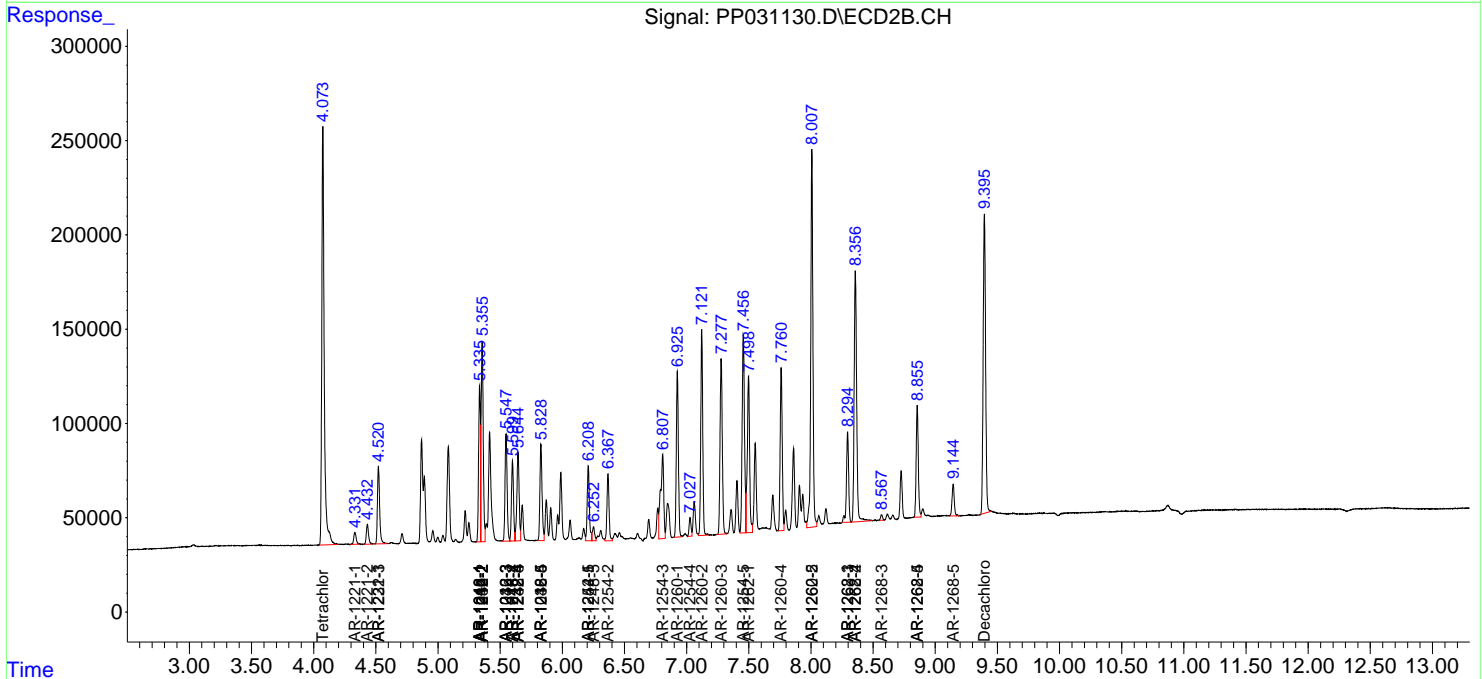
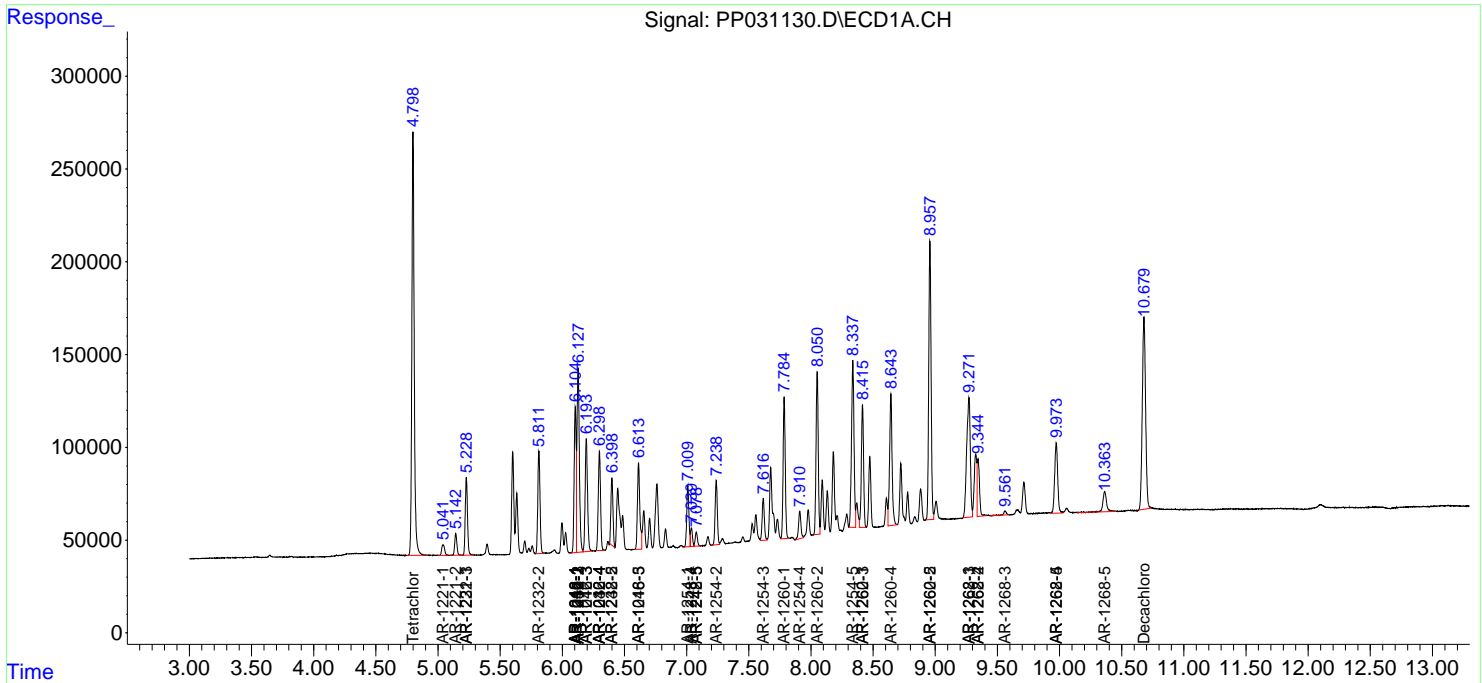
(f)=RT Delta > 1/2 Window (#)=Amounts differ by > 25% (m)=manual int.

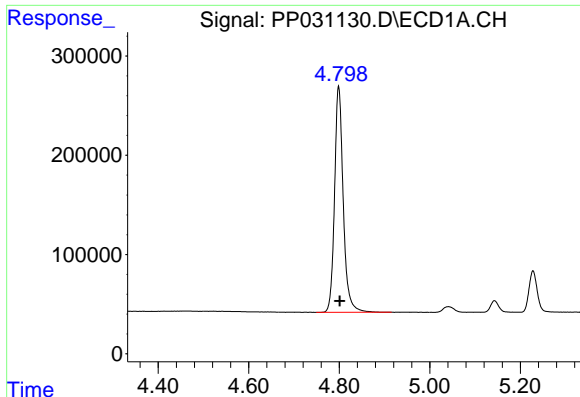
Data Path : Z:\pestpcbsrv\HPCHEM1\ECD\_P\Data\PP110420\  
 Data File : PP031130.D  
 Signal(s) : Signal #1: ECD1A.CH Signal #2: ECD2B.CH  
 Acq On : 04 Nov 2020 21:44  
 Operator : DD\AJ  
 Sample : AR1660CCC500  
 Misc :  
 ALS Vial : 3 Sample Multiplier: 1

Instrument :  
 ECD\_P  
 ClientSampled :

Integration File signal 1: autoint1.e  
 Integration File signal 2: autoint2.e  
 Quant Time: Nov 05 07:46:42 2020  
 Quant Method : Z:\pestpcbsrv\HPCHEM1\ECD\_P\methods\PP110420.M  
 Quant Title : GC EXTRACTABLES  
 QLast Update : Wed Nov 04 08:24:38 2020  
 Response via : Initial Calibration  
 Integrator: ChemStation 6890 Scale Mode: Small noise peaks clipped

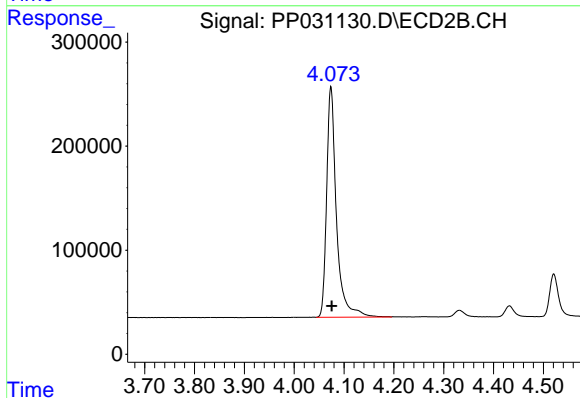
Volume Inj. : 2 µl  
 Signal #1 Phase : ZB-MR1 Signal #2 Phase: ZB-MR2  
 Signal #1 Info : 30Mx0.32mmx 0.50µ Signal #2 Info : 30M x 0.32mm x 0.25µm



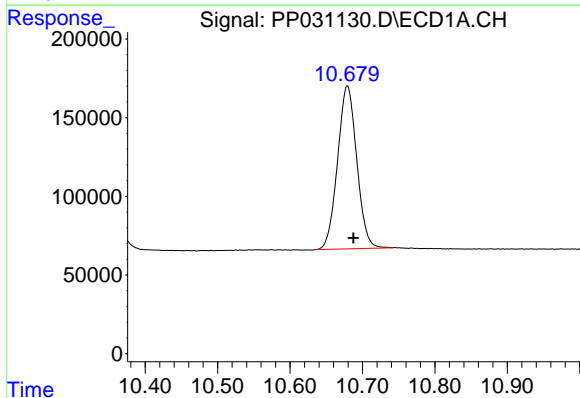


#1 Tetrachloro-m-xylene  
 R.T.: 4.799 min  
 Delta R.T.: -0.002 min  
 Response: 3037384  
 Conc: 45.48 ng/ml

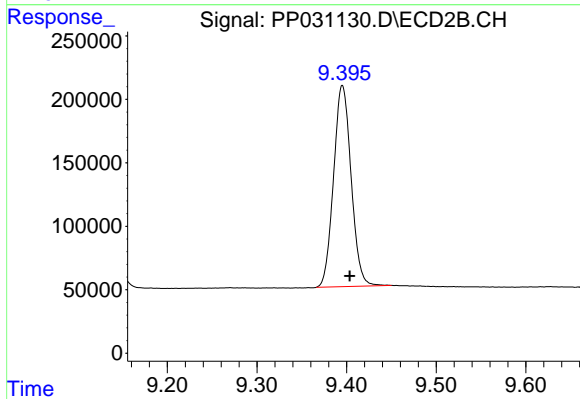
Instrument :  
 ECD\_P  
 ClientSampleId :



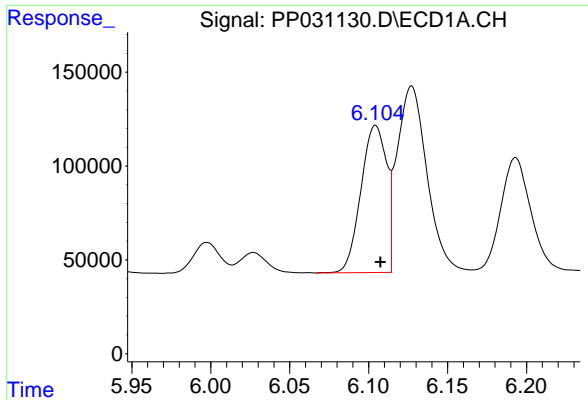
#1 Tetrachloro-m-xylene  
 R.T.: 4.074 min  
 Delta R.T.: -0.002 min  
 Response: 3030592  
 Conc: 45.59 ng/ml



#2 Decachlorobiphenyl  
 R.T.: 10.679 min  
 Delta R.T.: -0.008 min  
 Response: 1907977  
 Conc: 47.72 ng/ml



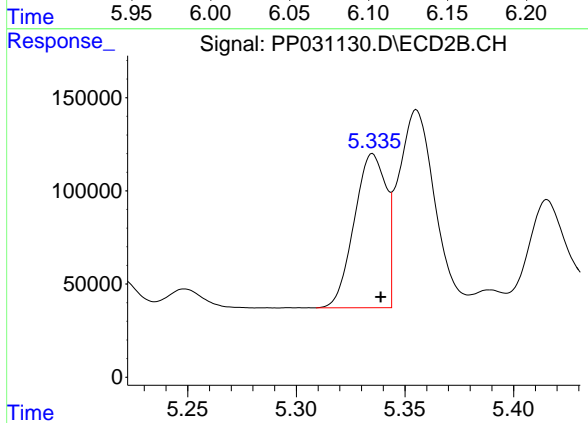
#2 Decachlorobiphenyl  
 R.T.: 9.395 min  
 Delta R.T.: -0.008 min  
 Response: 2154874  
 Conc: 51.61 ng/ml



#3 AR-1016-1

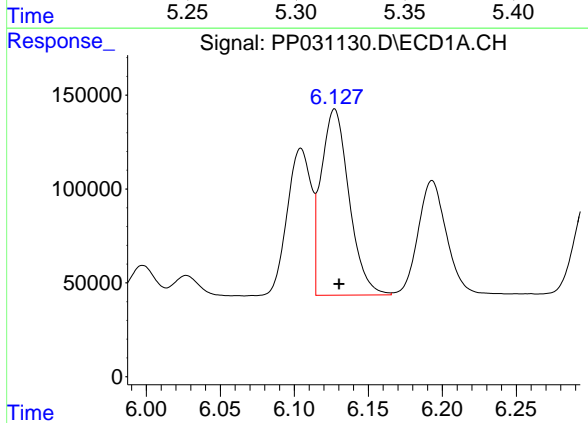
R.T.: 6.104 min  
 Delta R.T.: -0.003 min  
 Response: 885146  
 Conc: 454.60 ng/ml

Instrument :  
 ECD\_P  
 ClientSampled :



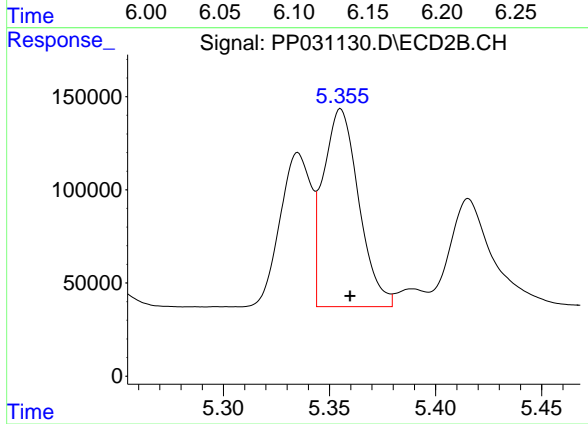
#3 AR-1016-1

R.T.: 5.335 min  
 Delta R.T.: -0.004 min  
 Response: 844337  
 Conc: 455.10 ng/ml



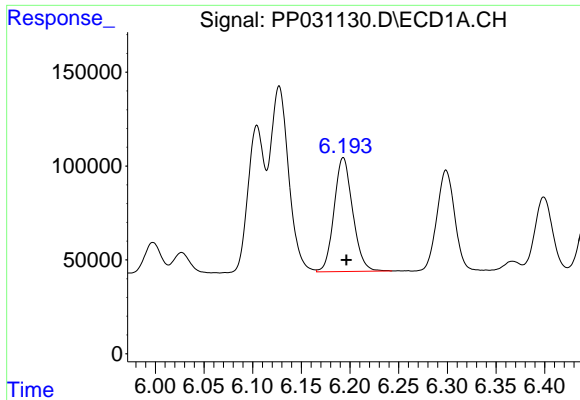
#4 AR-1016-2

R.T.: 6.127 min  
 Delta R.T.: -0.003 min  
 Response: 1301764  
 Conc: 456.00 ng/ml



#4 AR-1016-2

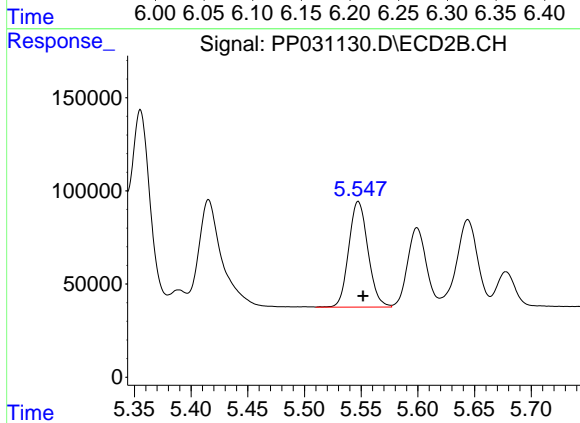
R.T.: 5.355 min  
 Delta R.T.: -0.004 min  
 Response: 1236384  
 Conc: 454.85 ng/ml



#5 AR-1016-3

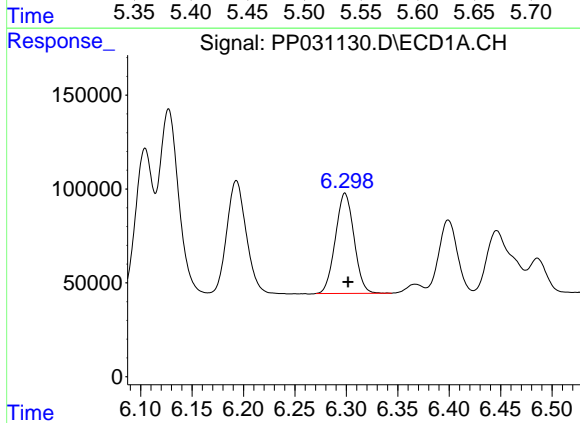
R.T.: 6.193 min  
 Delta R.T.: -0.003 min  
 Response: 806632  
 Conc: 463.11 ng/ml

Instrument :  
 ECD\_P  
 ClientSampled :



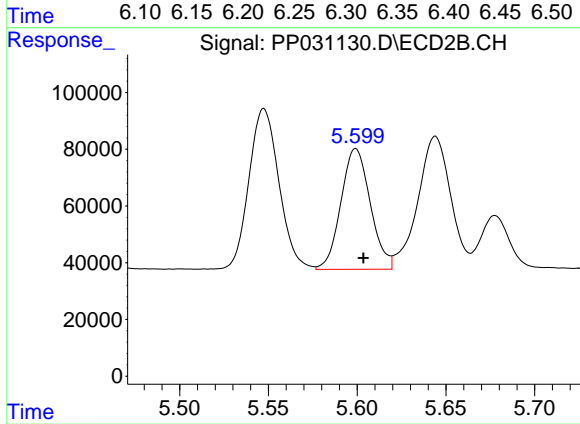
#5 AR-1016-3

R.T.: 5.547 min  
 Delta R.T.: -0.004 min  
 Response: 670707  
 Conc: 529.54 ng/ml



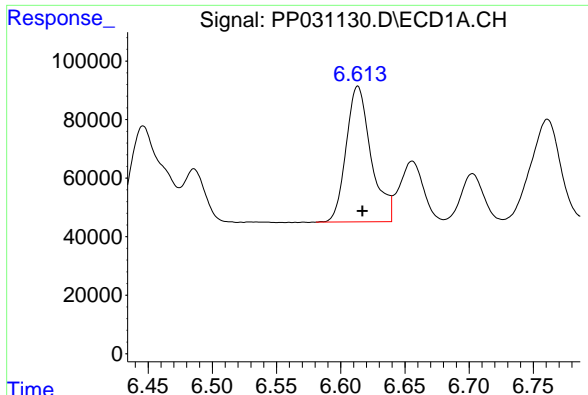
#6 AR-1016-4

R.T.: 6.299 min  
 Delta R.T.: -0.003 min  
 Response: 674230  
 Conc: 466.61 ng/ml



#6 AR-1016-4

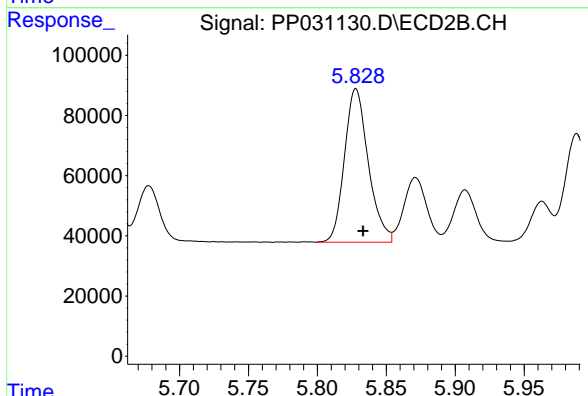
R.T.: 5.599 min  
 Delta R.T.: -0.004 min  
 Response: 490522  
 Conc: 531.88 ng/ml



#7 AR-1016-5

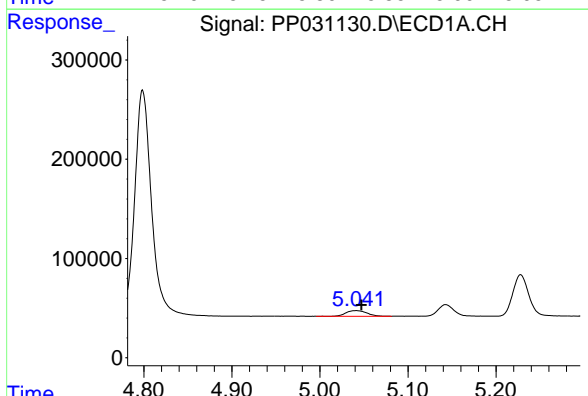
R.T.: 6.613 min  
 Delta R.T.: -0.003 min  
 Response: 625691  
 Conc: 501.92 ng/ml

Instrument :  
 ECD\_P  
 ClientSampleId :



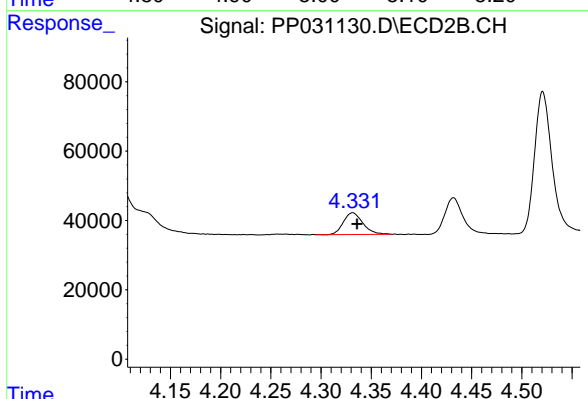
#7 AR-1016-5

R.T.: 5.828 min  
 Delta R.T.: -0.005 min  
 Response: 613844  
 Conc: 467.68 ng/ml



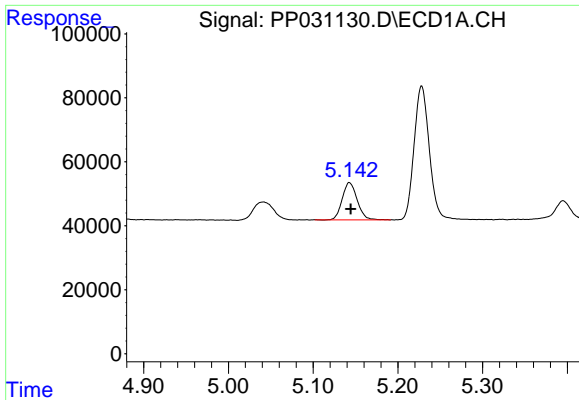
#8 AR-1221-1

R.T.: 5.041 min  
 Delta R.T.: -0.006 min  
 Response: 93067  
 Conc: 154.12 ng/ml



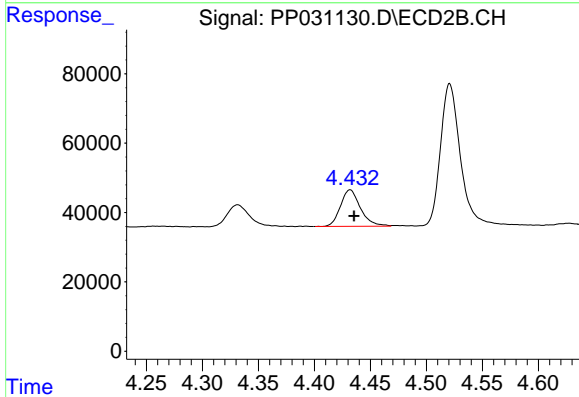
#8 AR-1221-1

R.T.: 4.332 min  
 Delta R.T.: -0.004 min  
 Response: 85026  
 Conc: 150.97 ng/ml

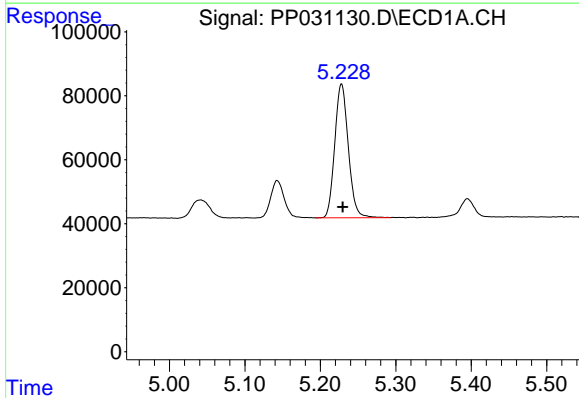


#9 AR-1221-2  
 R.T.: 5.143 min  
 Delta R.T.: -0.001 min  
 Response: 142673  
 Conc: 317.64 ng/ml

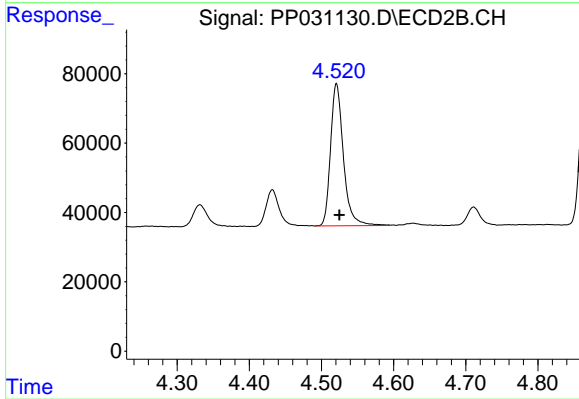
Instrument :  
 ECD\_P  
 ClientSampled :



#9 AR-1221-2  
 R.T.: 4.432 min  
 Delta R.T.: -0.003 min  
 Response: 131552  
 Conc: 317.08 ng/ml

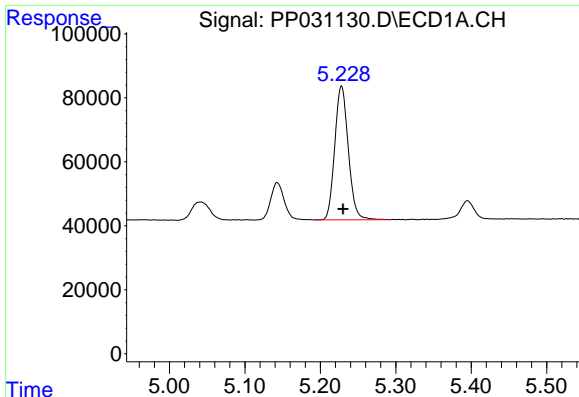


#10 AR-1221-3  
 R.T.: 5.228 min  
 Delta R.T.: -0.002 min  
 Response: 521733  
 Conc: 386.56 ng/ml



#10 AR-1221-3  
 R.T.: 4.521 min  
 Delta R.T.: -0.004 min  
 Response: 508564  
 Conc: 387.80 ng/ml

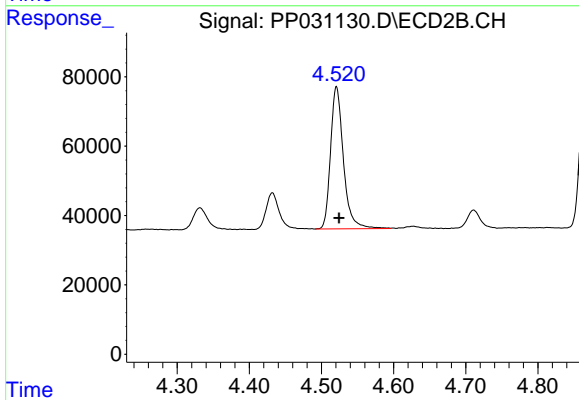




#11 AR-1232-1

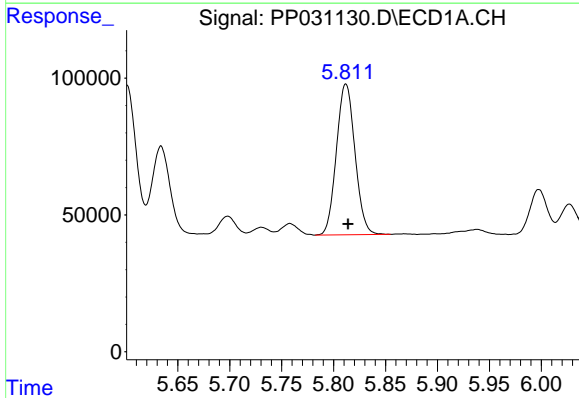
R.T.: 5.228 min  
 Delta R.T.: -0.002 min  
 Response: 521733  
 Conc: 426.60 ng/ml

Instrument :  
 ECD\_P  
 ClientSampleId :



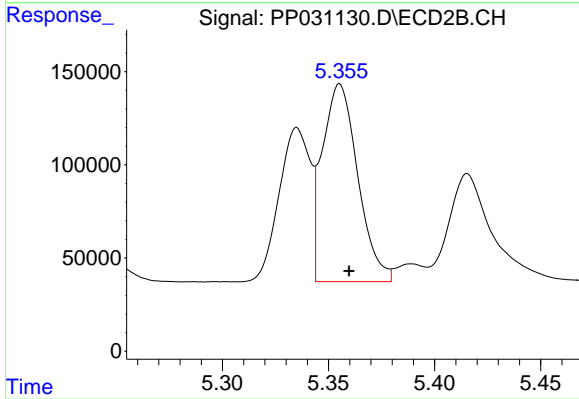
#11 AR-1232-1

R.T.: 4.521 min  
 Delta R.T.: -0.004 min  
 Response: 508564  
 Conc: 424.56 ng/ml



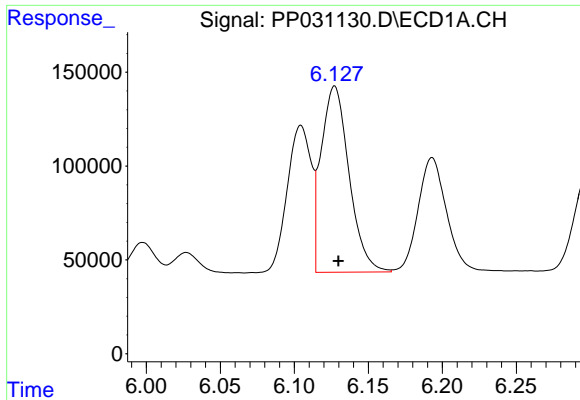
#12 AR-1232-2

R.T.: 5.812 min  
 Delta R.T.: -0.002 min  
 Response: 685578  
 Conc: 1129.02 ng/ml



#12 AR-1232-2

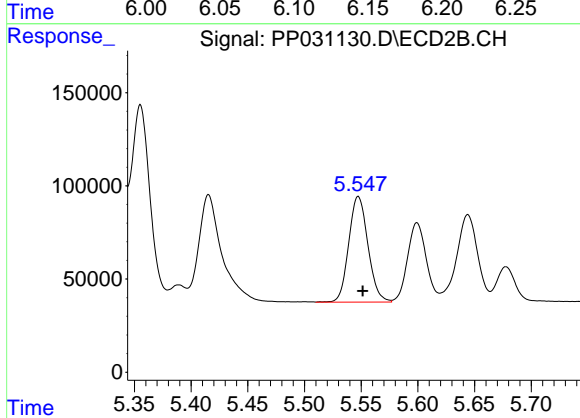
R.T.: 5.355 min  
 Delta R.T.: -0.004 min  
 Response: 1236384  
 Conc: 1163.44 ng/ml



#13 AR-1232-3

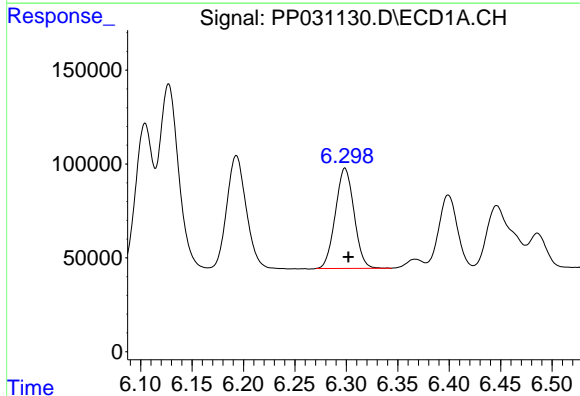
R.T.: 6.127 min  
 Delta R.T.: -0.003 min  
 Response: 1301764  
 Conc: 1165.28 ng/ml

Instrument :  
 ECD\_P  
 ClientSampleId :



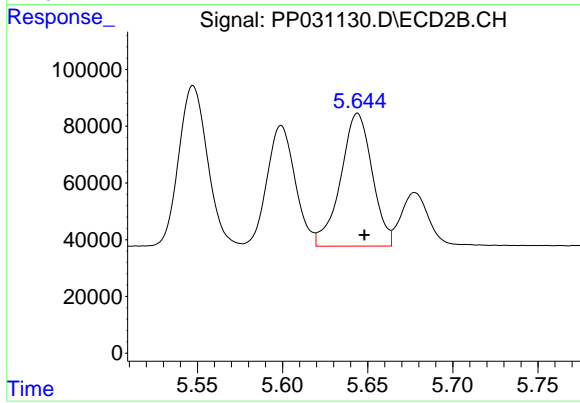
#13 AR-1232-3

R.T.: 5.547 min  
 Delta R.T.: -0.004 min  
 Response: 670707  
 Conc: 1308.19 ng/ml



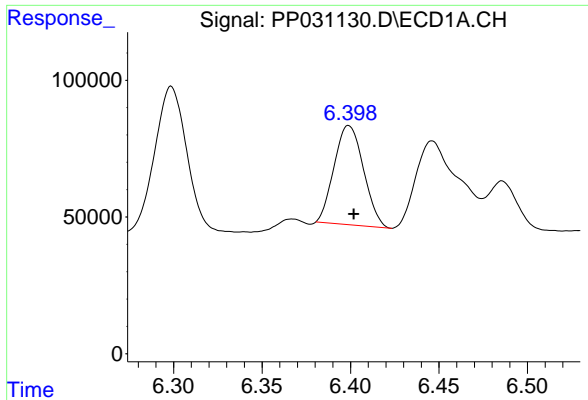
#14 AR-1232-4

R.T.: 6.299 min  
 Delta R.T.: -0.003 min  
 Response: 674230  
 Conc: 1187.97 ng/ml



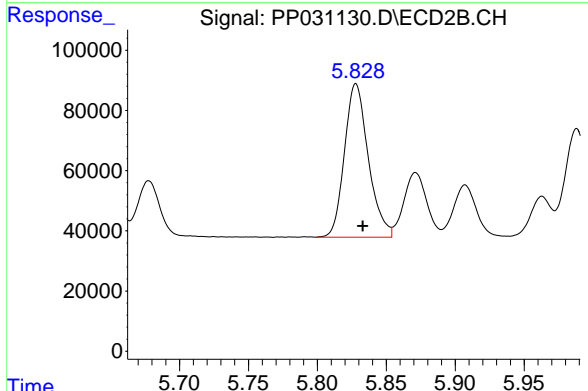
#14 AR-1232-4

R.T.: 5.644 min  
 Delta R.T.: -0.004 min  
 Response: 603194  
 Conc: 1381.09 ng/ml

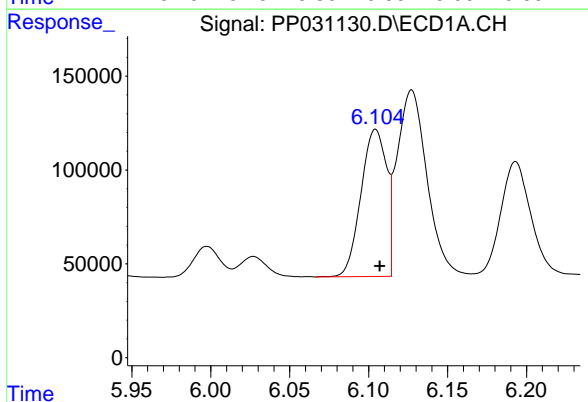


#15 AR-1232-5  
 R.T.: 6.399 min  
 Delta R.T.: -0.003 min  
 Response: 419025  
 Conc: 1209.27 ng/ml

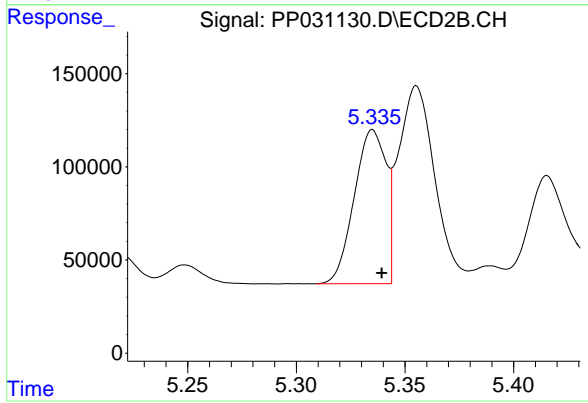
Instrument :  
 ECD\_P  
 ClientSampleId :



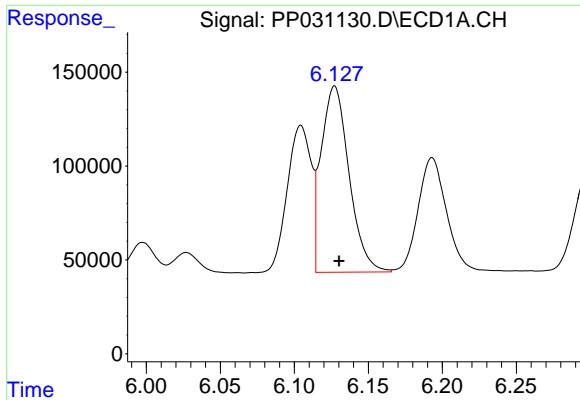
#15 AR-1232-5  
 R.T.: 5.828 min  
 Delta R.T.: -0.005 min  
 Response: 613844  
 Conc: 1271.18 ng/ml



#16 AR-1242-1  
 R.T.: 6.104 min  
 Delta R.T.: -0.003 min  
 Response: 885146  
 Conc: 658.84 ng/ml



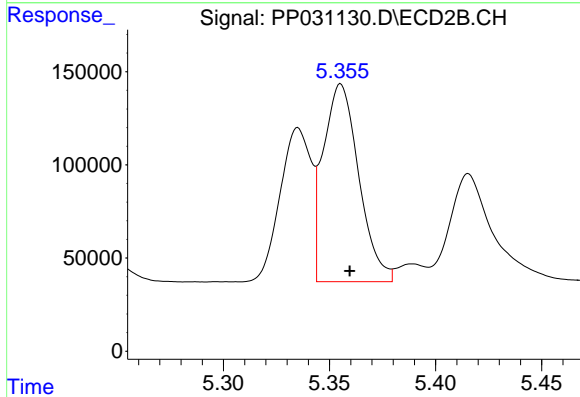
#16 AR-1242-1  
 R.T.: 5.335 min  
 Delta R.T.: -0.004 min  
 Response: 844337  
 Conc: 656.09 ng/ml



#17 AR-1242-2

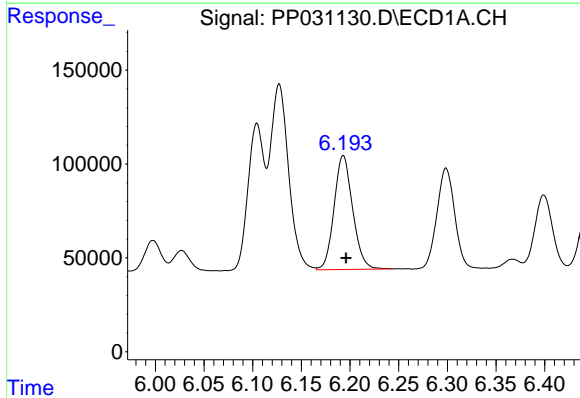
R.T.: 6.127 min  
 Delta R.T.: -0.003 min  
 Response: 1301764  
 Conc: 666.55 ng/ml

Instrument :  
 ECD\_P  
 ClientSampled :



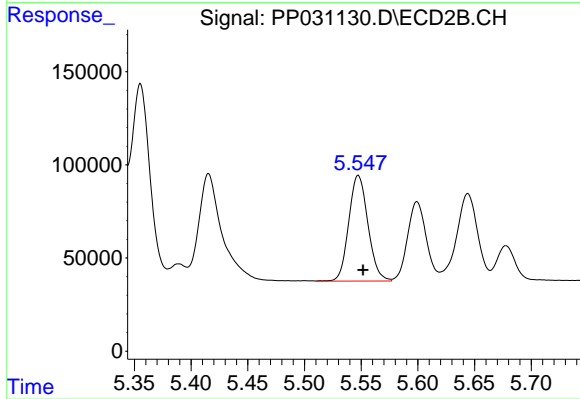
#17 AR-1242-2

R.T.: 5.355 min  
 Delta R.T.: -0.004 min  
 Response: 1236384  
 Conc: 662.11 ng/ml



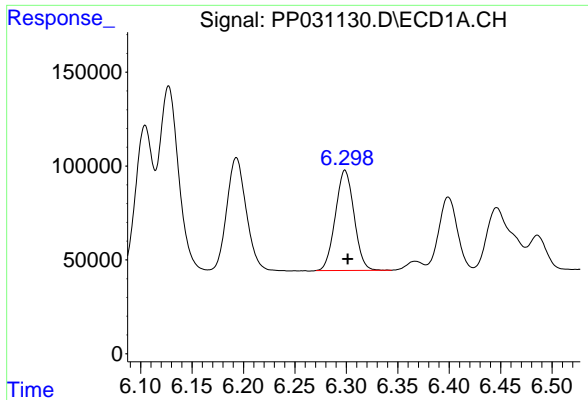
#18 AR-1242-3

R.T.: 6.193 min  
 Delta R.T.: -0.003 min  
 Response: 806632  
 Conc: 661.41 ng/ml



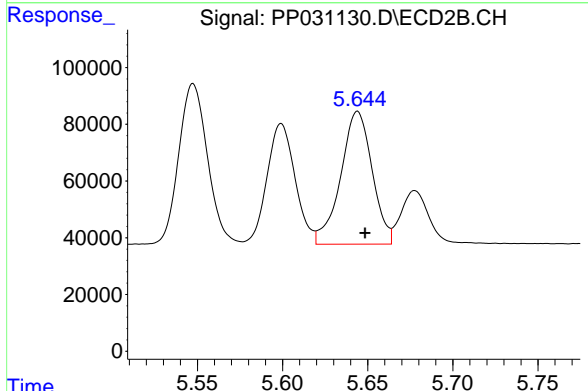
#18 AR-1242-3

R.T.: 5.547 min  
 Delta R.T.: -0.004 min  
 Response: 670707  
 Conc: 714.39 ng/ml

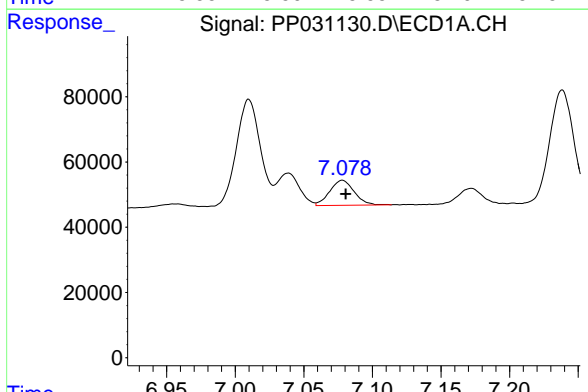


#19 AR-1242-4  
 R.T.: 6.299 min  
 Delta R.T.: -0.003 min  
 Response: 674230  
 Conc: 665.50 ng/ml

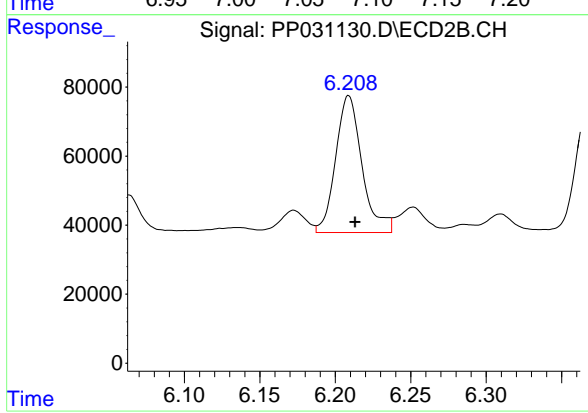
Instrument :  
 ECD\_P  
 ClientSampled :



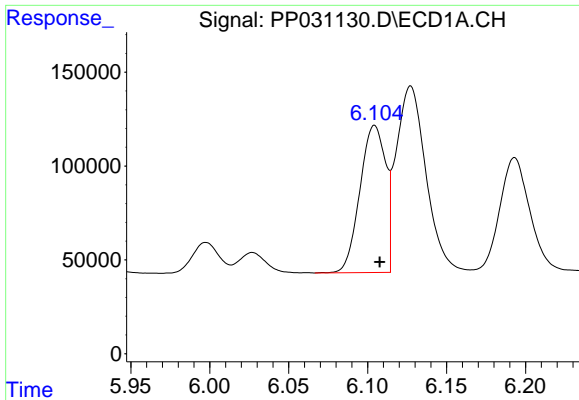
#19 AR-1242-4  
 R.T.: 5.644 min  
 Delta R.T.: -0.004 min  
 Response: 603194  
 Conc: 695.56 ng/ml



#20 AR-1242-5  
 R.T.: 7.078 min  
 Delta R.T.: -0.002 min  
 Response: 95391  
 Conc: 99.96 ng/ml



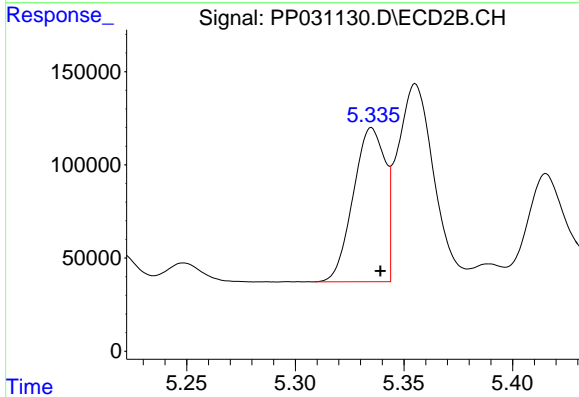
#20 AR-1242-5  
 R.T.: 6.209 min  
 Delta R.T.: -0.004 min  
 Response: 482780  
 Conc: 484.96 ng/ml



#21 AR-1248-1

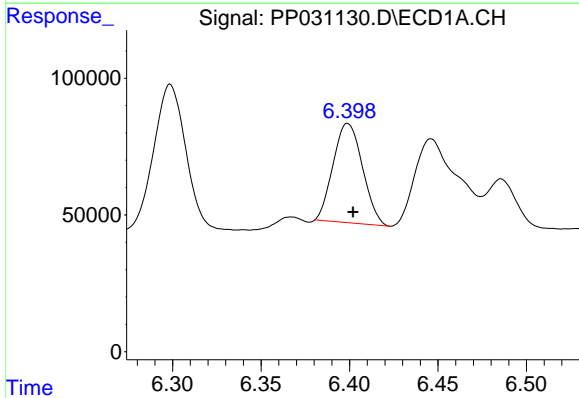
R.T.: 6.104 min  
 Delta R.T.: -0.003 min  
 Response: 885146  
 Conc: 917.92 ng/ml

Instrument :  
 ECD\_P  
 ClientSampled :



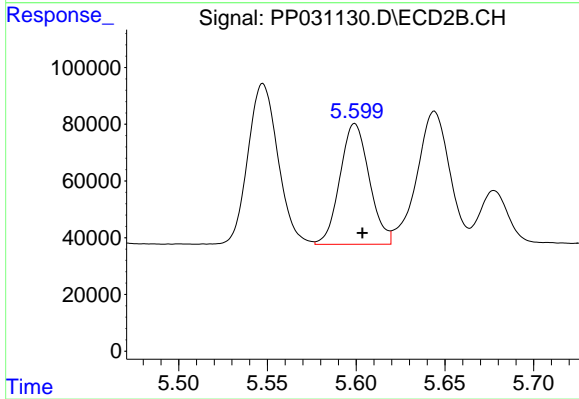
#21 AR-1248-1

R.T.: 5.335 min  
 Delta R.T.: -0.004 min  
 Response: 844337  
 Conc: 912.50 ng/ml



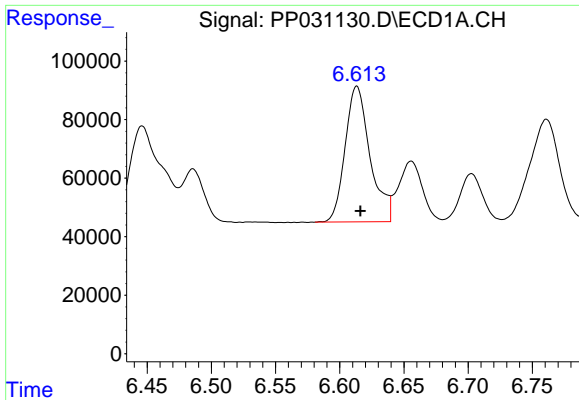
#22 AR-1248-2

R.T.: 6.399 min  
 Delta R.T.: -0.003 min  
 Response: 419025  
 Conc: 362.29 ng/ml



#22 AR-1248-2

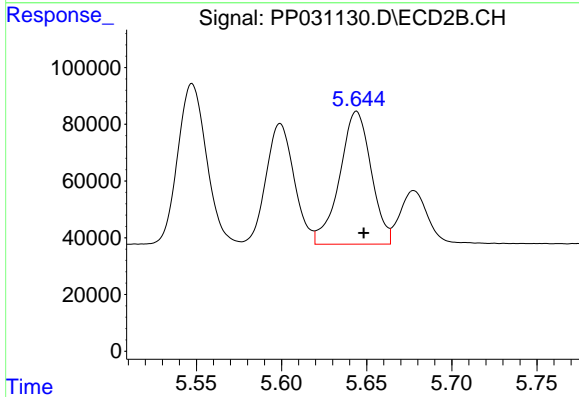
R.T.: 5.599 min  
 Delta R.T.: -0.004 min  
 Response: 490522  
 Conc: 445.08 ng/ml



#23 AR-1248-3

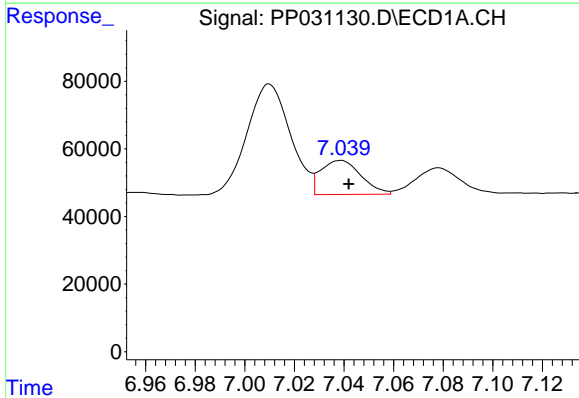
R.T.: 6.613 min  
Delta R.T.: -0.003 min  
Response: 625691  
Conc: 439.76 ng/ml

Instrument :  
ECD\_P  
ClientSampleId :



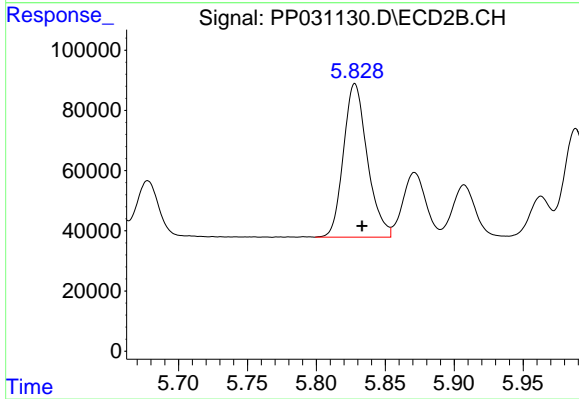
#23 AR-1248-3

R.T.: 5.644 min  
Delta R.T.: -0.004 min  
Response: 603194  
Conc: 498.37 ng/ml



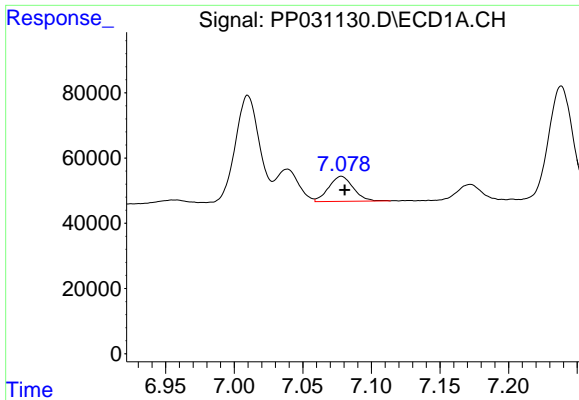
#24 AR-1248-4

R.T.: 7.039 min  
Delta R.T.: -0.003 min  
Response: 113127  
Conc: 74.23 ng/ml



#24 AR-1248-4

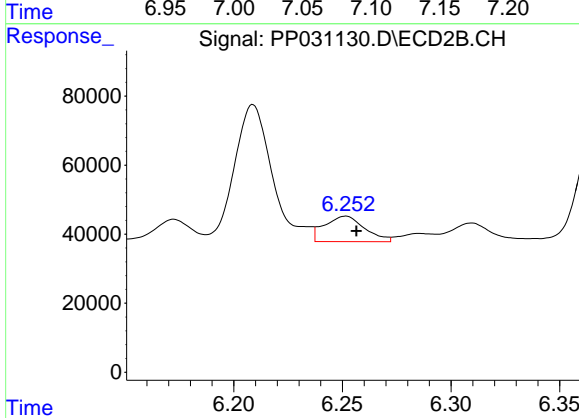
R.T.: 5.828 min  
Delta R.T.: -0.005 min  
Response: 613844  
Conc: 415.93 ng/ml



#25 AR-1248-5

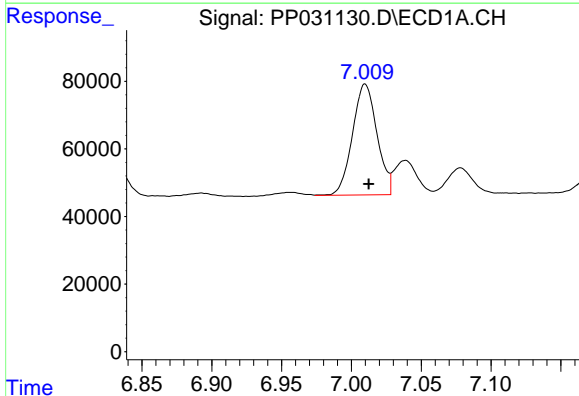
R.T.: 7.078 min  
 Delta R.T.: -0.002 min  
 Response: 95391  
 Conc: 62.88 ng/ml

Instrument :  
 ECD\_P  
 ClientSampleId :



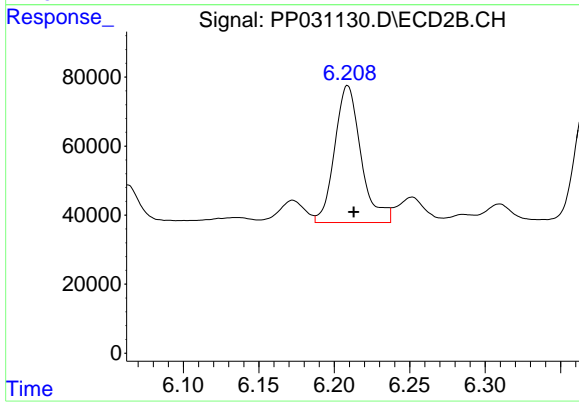
#25 AR-1248-5

R.T.: 6.252 min  
 Delta R.T.: -0.005 min  
 Response: 95214  
 Conc: 75.39 ng/ml



#26 AR-1254-1

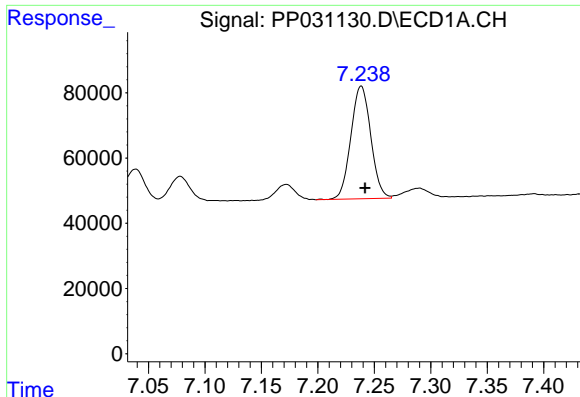
R.T.: 7.010 min  
 Delta R.T.: -0.003 min  
 Response: 400381  
 Conc: 285.17 ng/ml



#26 AR-1254-1

R.T.: 6.209 min  
 Delta R.T.: -0.004 min  
 Response: 482780  
 Conc: 245.48 ng/ml

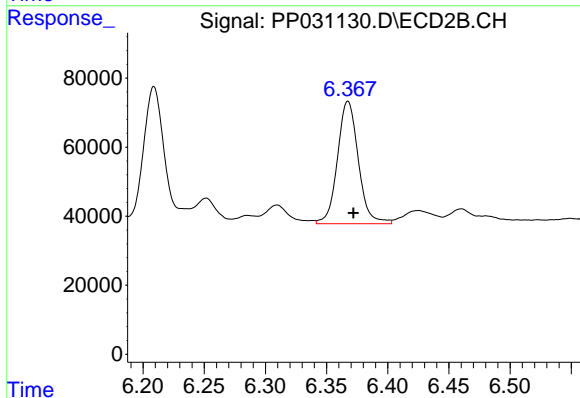




#27 AR-1254-2

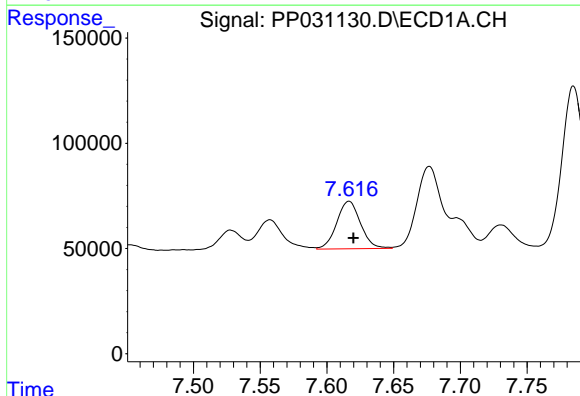
R.T.: 7.238 min  
 Delta R.T.: -0.003 min  
 Response: 424162  
 Conc: 203.49 ng/ml

Instrument :  
 ECD\_P  
 ClientSampled :



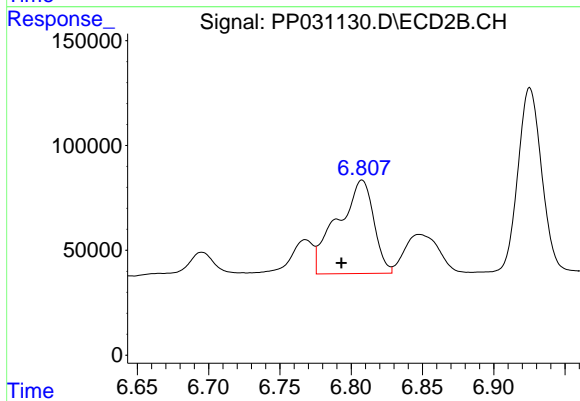
#27 AR-1254-2

R.T.: 6.367 min  
 Delta R.T.: -0.004 min  
 Response: 421213  
 Conc: 256.33 ng/ml



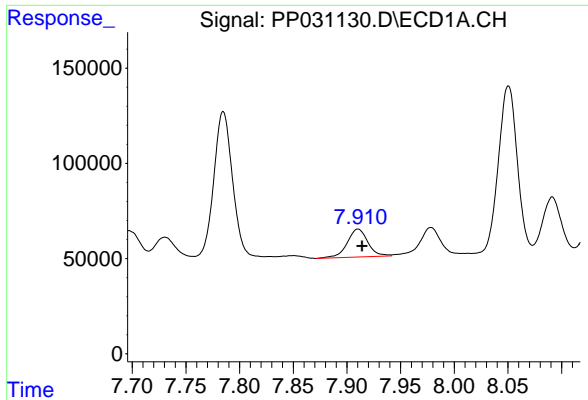
#28 AR-1254-3

R.T.: 7.617 min  
 Delta R.T.: -0.003 min  
 Response: 280598  
 Conc: 121.57 ng/ml



#28 AR-1254-3

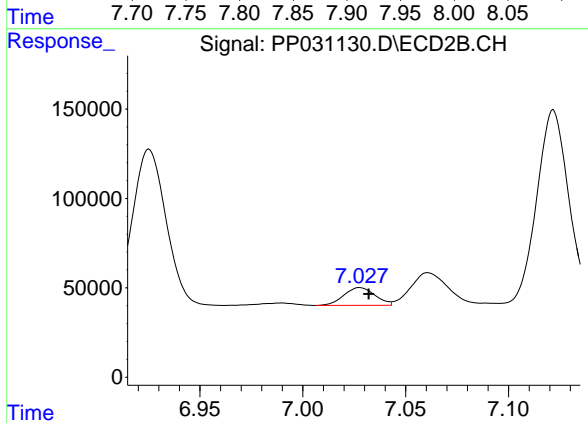
R.T.: 6.808 min  
 Delta R.T.: 0.014 min  
 Response: 788158  
 Conc: 287.83 ng/ml



#29 AR-1254-4

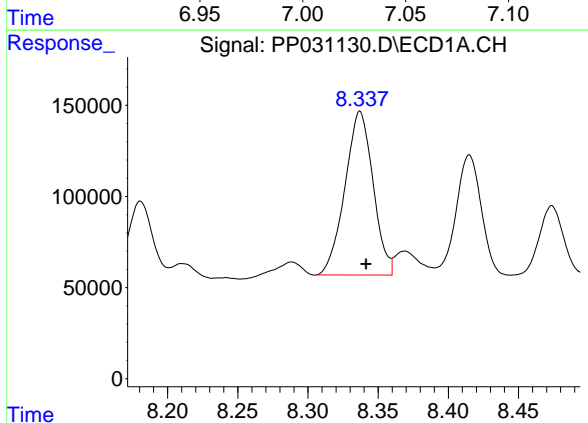
R.T.: 7.910 min  
 Delta R.T.: -0.004 min  
 Response: 197452  
 Conc: 120.60 ng/ml

Instrument :  
 ECD\_P  
 ClientSampleId :



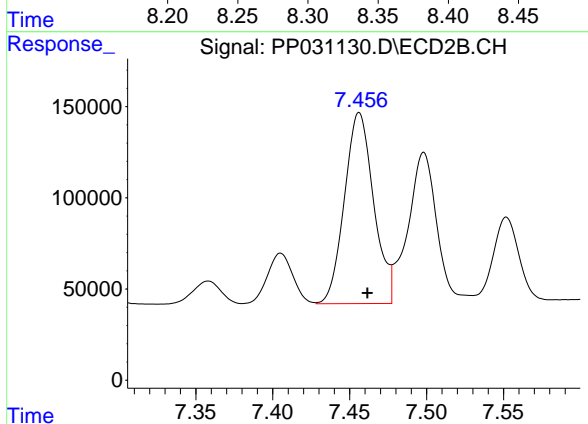
#29 AR-1254-4

R.T.: 7.028 min  
 Delta R.T.: -0.004 min  
 Response: 104362  
 Conc: 64.68 ng/ml



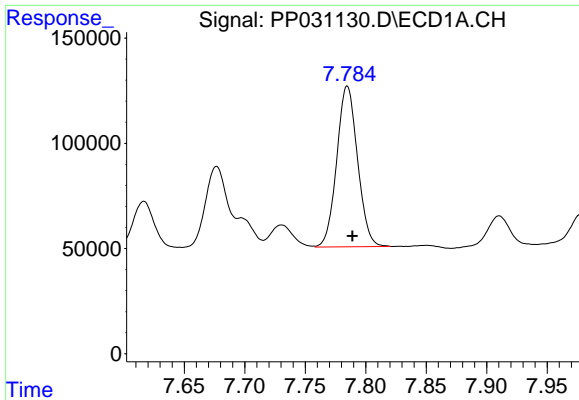
#30 AR-1254-5

R.T.: 8.337 min  
 Delta R.T.: -0.004 min  
 Response: 1253962  
 Conc: 742.81 ng/ml



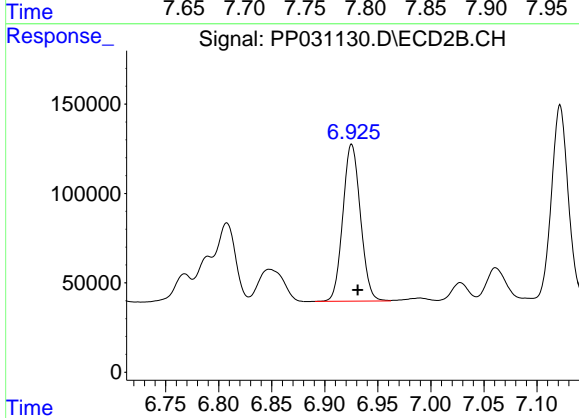
#30 AR-1254-5

R.T.: 7.456 min  
 Delta R.T.: -0.005 min  
 Response: 1380715  
 Conc: 630.61 ng/ml

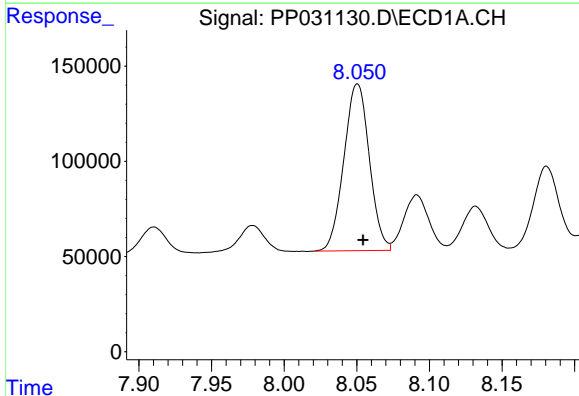


#31 AR-1260-1  
 R.T.: 7.785 min  
 Delta R.T.: -0.004 min  
 Response: 915685  
 Conc: 498.51 ng/ml

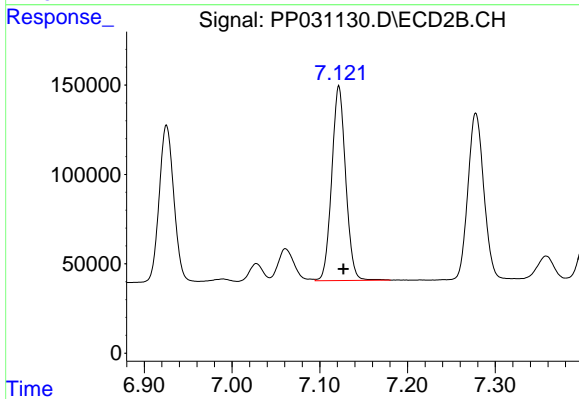
Instrument :  
 ECD\_P  
 ClientSampled :



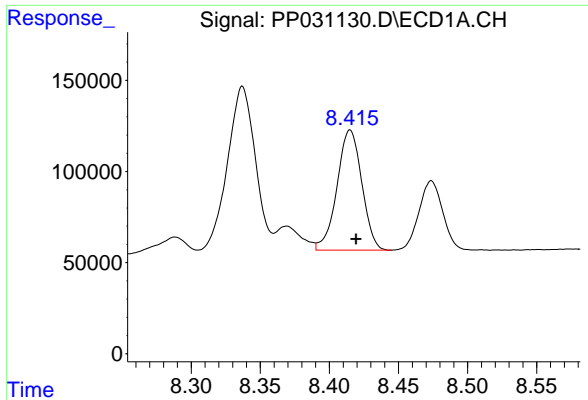
#31 AR-1260-1  
 R.T.: 6.925 min  
 Delta R.T.: -0.006 min  
 Response: 1012560  
 Conc: 505.23 ng/ml



#32 AR-1260-2  
 R.T.: 8.050 min  
 Delta R.T.: -0.004 min  
 Response: 1069004  
 Conc: 496.21 ng/ml



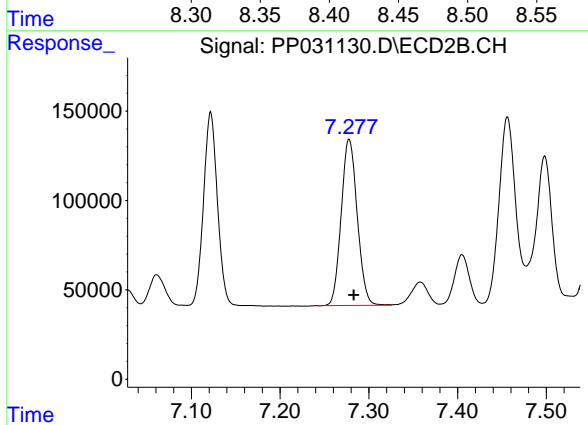
#32 AR-1260-2  
 R.T.: 7.122 min  
 Delta R.T.: -0.005 min  
 Response: 1200881  
 Conc: 512.80 ng/ml



#33 AR-1260-3

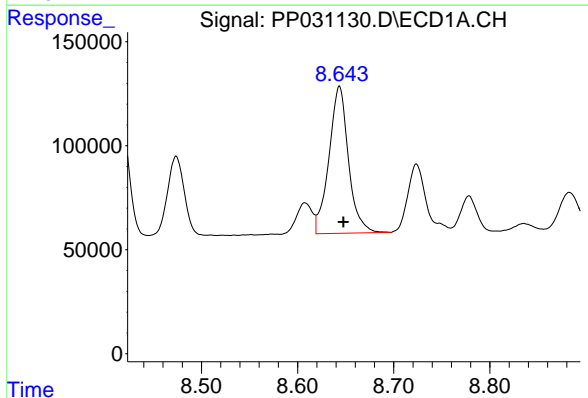
R.T.: 8.415 min  
 Delta R.T.: -0.004 min  
 Response: 824206  
 Conc: 500.71 ng/ml

Instrument :  
 ECD\_P  
 ClientSampleId :



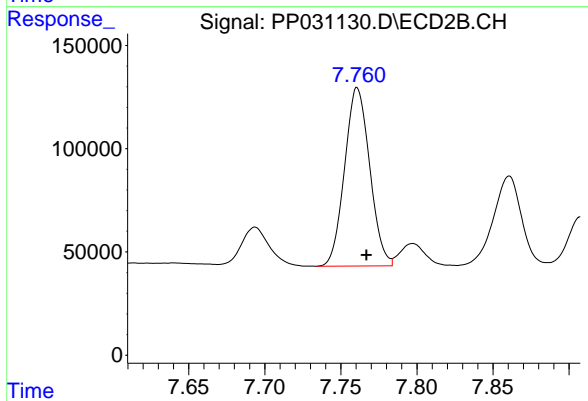
#33 AR-1260-3

R.T.: 7.278 min  
 Delta R.T.: -0.005 min  
 Response: 1166668  
 Conc: 513.16 ng/ml



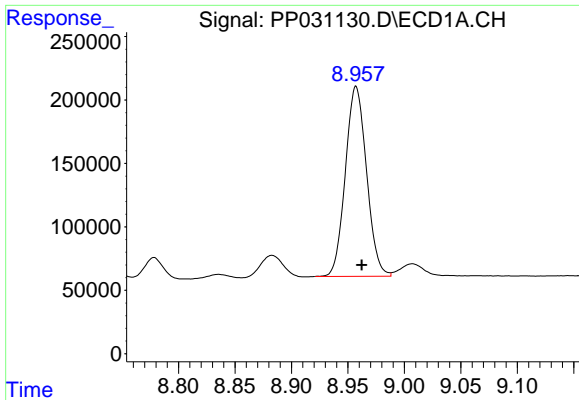
#34 AR-1260-4

R.T.: 8.644 min  
 Delta R.T.: -0.004 min  
 Response: 997643  
 Conc: 536.55 ng/ml



#34 AR-1260-4

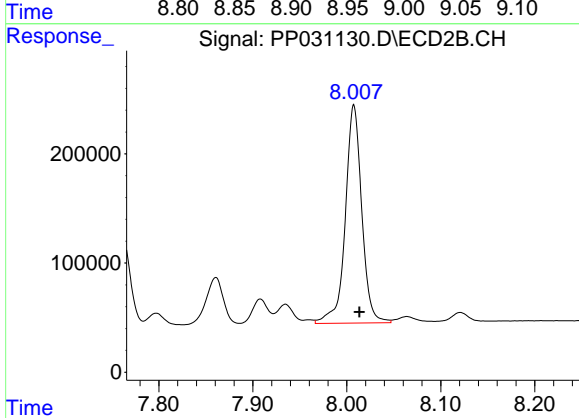
R.T.: 7.761 min  
 Delta R.T.: -0.006 min  
 Response: 991468  
 Conc: 543.43 ng/ml



#35 AR-1260-5

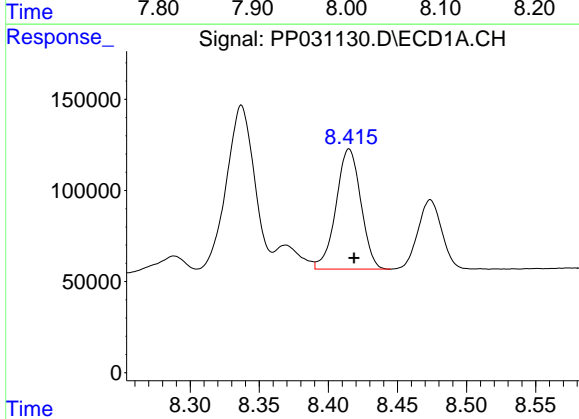
R.T.: 8.957 min  
 Delta R.T.: -0.005 min  
 Response: 1954835  
 Conc: 518.46 ng/ml

Instrument :  
 ECD\_P  
 ClientSampled :



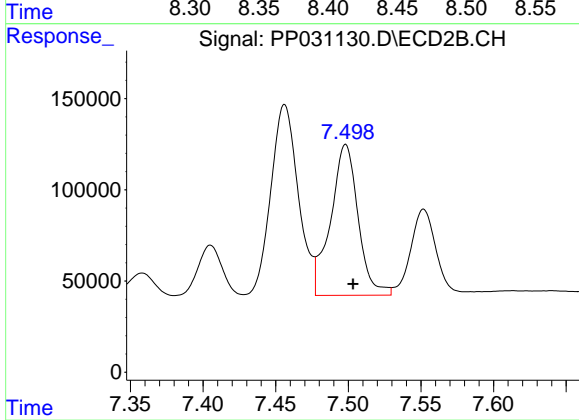
#35 AR-1260-5

R.T.: 8.008 min  
 Delta R.T.: -0.006 min  
 Response: 2433231  
 Conc: 540.67 ng/ml



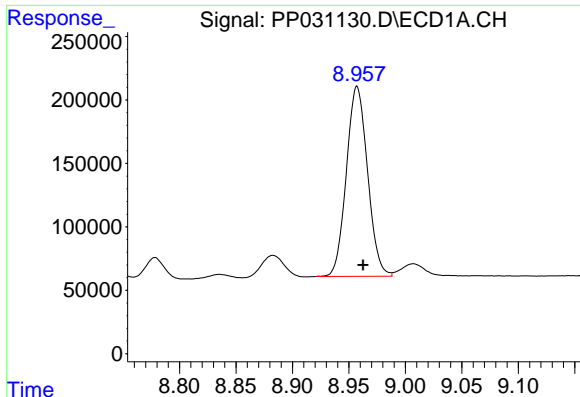
#36 AR-1262-1

R.T.: 8.415 min  
 Delta R.T.: -0.004 min  
 Response: 824206  
 Conc: 410.21 ng/ml



#36 AR-1262-1

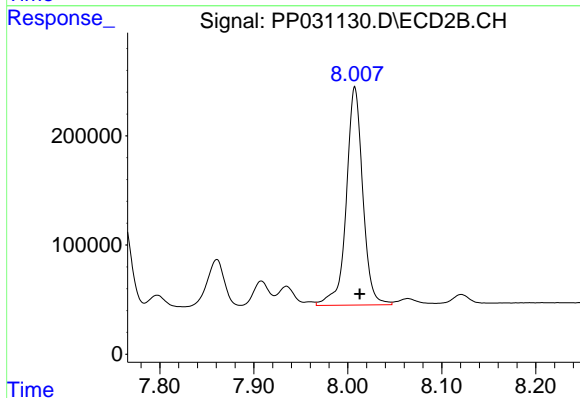
R.T.: 7.498 min  
 Delta R.T.: -0.005 min  
 Response: 1090886  
 Conc: 469.66 ng/ml



#37 AR-1262-2

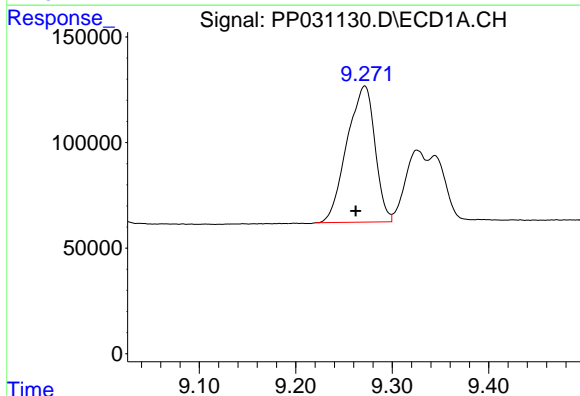
R.T.: 8.957 min  
 Delta R.T.: -0.005 min  
 Response: 1954835  
 Conc: 537.84 ng/ml

Instrument :  
 ECD\_P  
 ClientSampled :



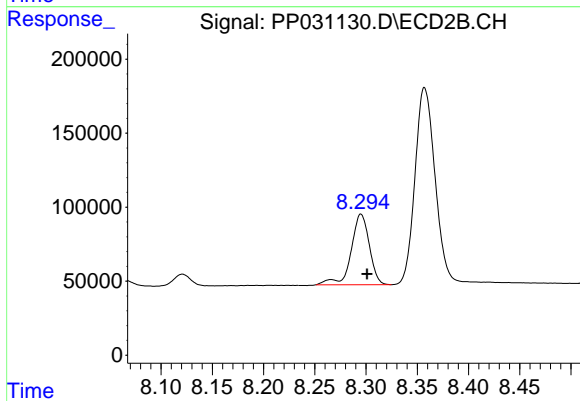
#37 AR-1262-2

R.T.: 8.008 min  
 Delta R.T.: -0.005 min  
 Response: 2433231  
 Conc: 586.92 ng/ml



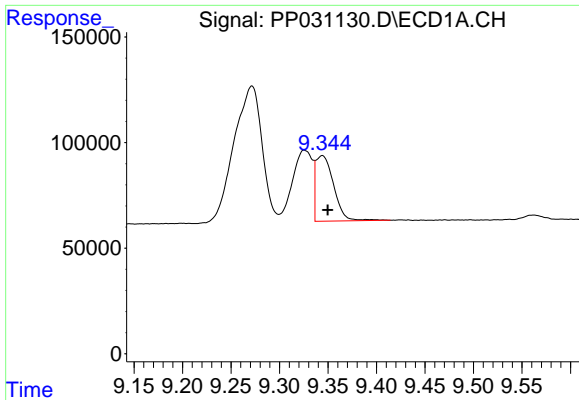
#38 AR-1262-3

R.T.: 9.272 min  
 Delta R.T.: 0.009 min  
 Response: 1298983  
 Conc: 502.49 ng/ml



#38 AR-1262-3

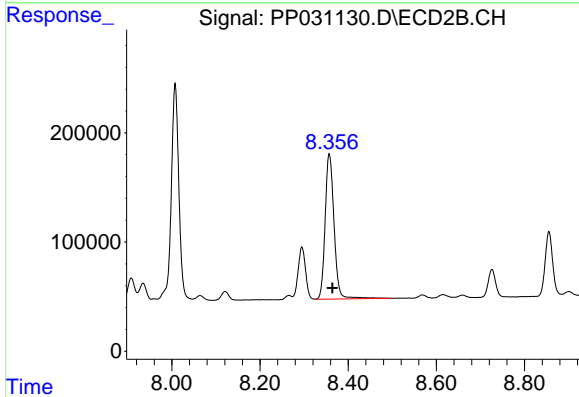
R.T.: 8.295 min  
 Delta R.T.: -0.006 min  
 Response: 589871  
 Conc: 347.92 ng/ml



#39 AR-1262-4

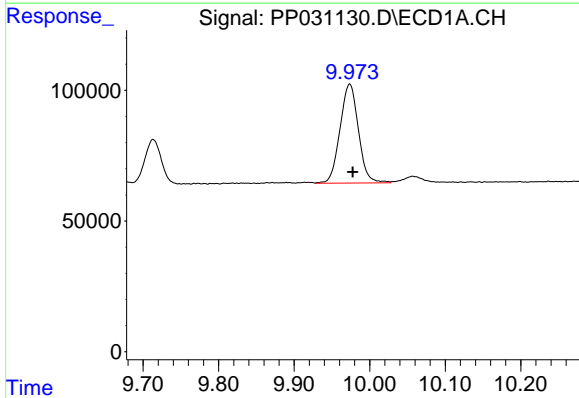
R.T.: 9.344 min  
 Delta R.T.: -0.005 min  
 Response: 396779  
 Conc: 192.72 ng/ml

Instrument :  
 ECD\_P  
 ClientSampled :



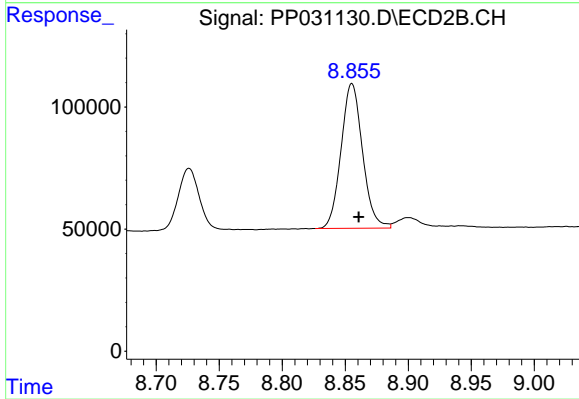
#39 AR-1262-4

R.T.: 8.357 min  
 Delta R.T.: -0.007 min  
 Response: 1863916  
 Conc: 586.96 ng/ml



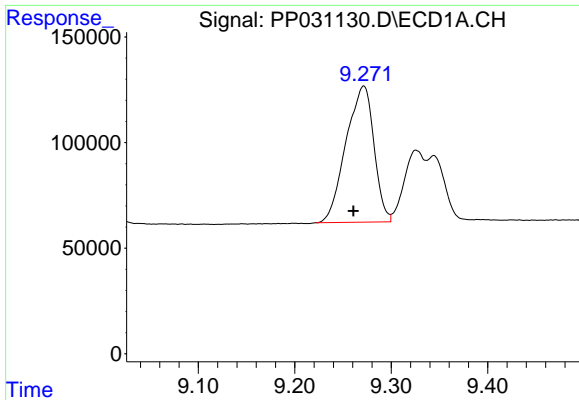
#40 AR-1262-5

R.T.: 9.974 min  
 Delta R.T.: -0.004 min  
 Response: 642612  
 Conc: 453.66 ng/ml



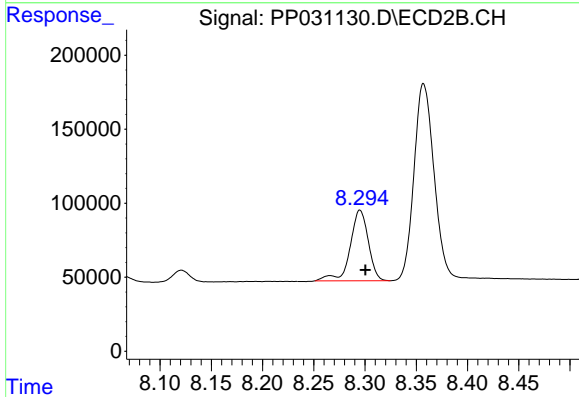
#40 AR-1262-5

R.T.: 8.855 min  
 Delta R.T.: -0.005 min  
 Response: 702897  
 Conc: 437.33 ng/ml

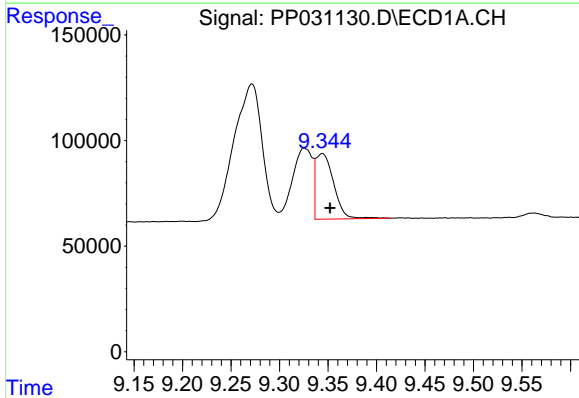


#41 AR-1268-1  
 R.T.: 9.272 min  
 Delta R.T.: 0.011 min  
 Response: 1298983  
 Conc: 297.37 ng/ml

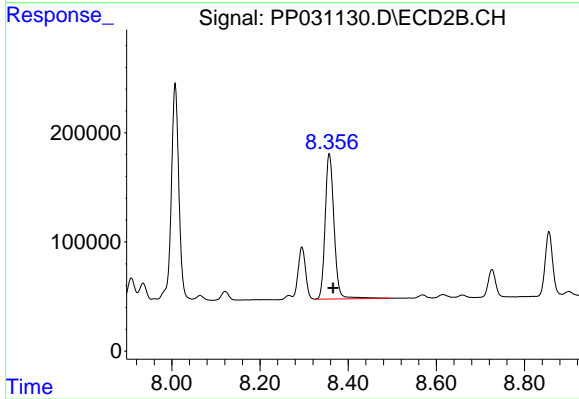
Instrument :  
 ECD\_P  
 ClientSampled :



#41 AR-1268-1  
 R.T.: 8.295 min  
 Delta R.T.: -0.005 min  
 Response: 589871  
 Conc: 120.49 ng/ml

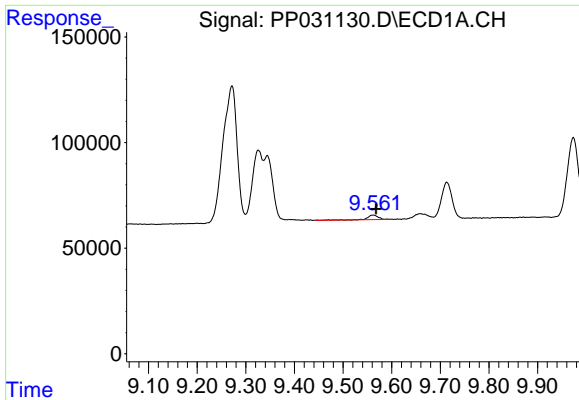


#42 AR-1268-2  
 R.T.: 9.344 min  
 Delta R.T.: -0.008 min  
 Response: 396779  
 Conc: 92.27 ng/ml



#42 AR-1268-2  
 R.T.: 8.357 min  
 Delta R.T.: -0.008 min  
 Response: 1863916  
 Conc: 391.91 ng/ml

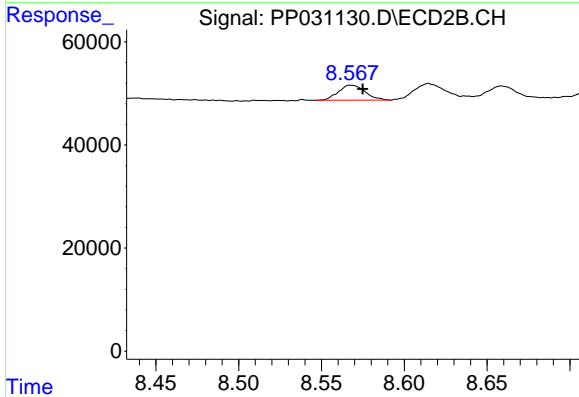




#43 AR-1268-3

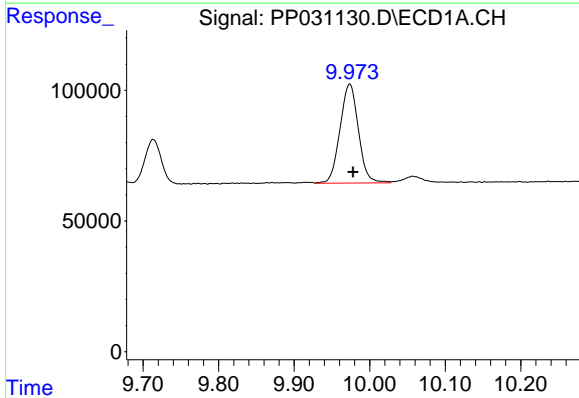
R.T.: 9.562 min  
 Delta R.T.: -0.006 min  
 Response: 31414  
 Conc: 8.69 ng/ml

Instrument :  
 ECD\_P  
 ClientSampleId :



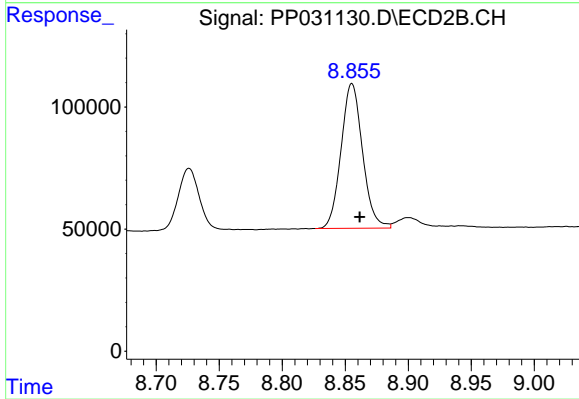
#43 AR-1268-3

R.T.: 8.568 min  
 Delta R.T.: -0.006 min  
 Response: 32406  
 Conc: 8.10 ng/ml



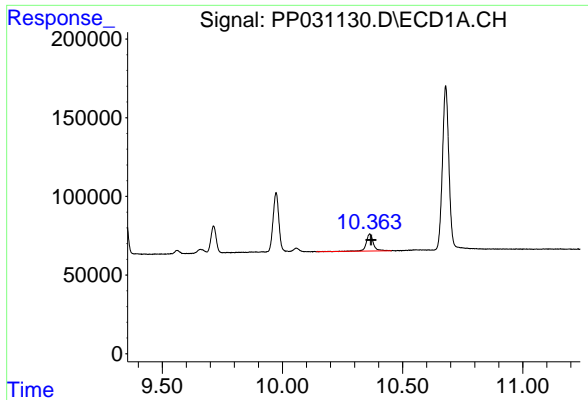
#44 AR-1268-4

R.T.: 9.974 min  
 Delta R.T.: -0.004 min  
 Response: 642612  
 Conc: 405.72 ng/ml



#44 AR-1268-4

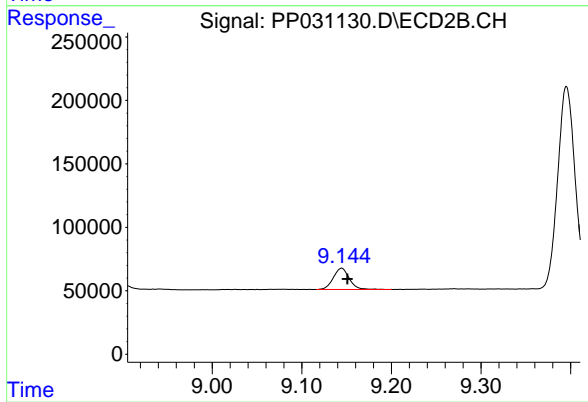
R.T.: 8.855 min  
 Delta R.T.: -0.006 min  
 Response: 702897  
 Conc: 414.86 ng/ml



#45 AR-1268-5

R.T.: 10.363 min  
Delta R.T.: -0.006 min  
Response: 224613  
Conc: 18.78 ng/ml

Instrument :  
ECD\_P  
ClientSampleId :



#45 AR-1268-5

R.T.: 9.144 min  
Delta R.T.: -0.007 min  
Response: 207220  
Conc: 15.45 ng/ml