

Data Path : Z:\pestpcbsrv\HPCHEM1\ECD_P\Data\PP110420\
 Data File : PP031141.D
 Signal(s) : Signal #1: ECD1A.CH Signal #2: ECD2B.CH
 Acq On : 05 Nov 2020 1:04
 Operator : DD\AJ
 Sample : L4214-07
 Misc : AR1660 LOD 40 PPB
 ALS Vial : 48 Sample Multiplier: 1

Instrument :
 ECD_P
 ClientSampleId :
 LOD-MDL-WATER-01-QT4-2020

Integration File signal 1: autoint1.e
 Integration File signal 2: autoint2.e
 Quant Time: Nov 05 05:12:49 2020
 Quant Method : Z:\pestpcbsrv\HPCHEM1\ECD_P\methods\PP110420.M
 Quant Title : GC EXTRACTABLES
 QLast Update : Wed Nov 04 08:24:38 2020
 Response via : Initial Calibration
 Integrator: ChemStation 6890 Scale Mode: Small noise peaks clipped

Volume Inj. : 2 µl
 Signal #1 Phase : ZB-MR1 Signal #2 Phase: ZB-MR2
 Signal #1 Info : 30Mx0.32mmx 0.50µ Signal #2 Info : 30M x 0.32mm x 0.25µm

Compound	RT#1	RT#2	Resp#1	Resp#2	ng/ml	ng/ml
System Monitoring Compounds						
1) SA Tetrachlo...	4.799	4.074	919783	880928	13.771	13.253
2) SA Decachlor...	10.680	9.395	601015	675441	15.031	16.176
Target Compounds						
3) L1 AR-1016-1	6.104	5.335	65013	56793	33.390	30.612
4) L1 AR-1016-2	6.128	5.355	92283	77422	32.326	28.483
5) L1 AR-1016-3	6.194	5.547	55703	42474	31.981	33.534
6) L1 AR-1016-4	6.299	5.598	43996	30554	30.448	33.130
7) L1 AR-1016-5	6.613	5.829	45933	40648	36.847	30.969
8) L2 AR-1221-1	0.000	4.331	0	5581	N.D.	9.910 #
9) L2 AR-1221-2	5.146	4.430	18813	15760	41.884	37.988
10) L2 AR-1221-3	5.228	4.521	36294	29644	26.891	22.605
11) L3 AR-1232-1	5.228	4.521	36294	29644	29.676	24.747
12) L3 AR-1232-2	5.811	5.355	47421	77422	78.094	72.854
13) L3 AR-1232-3	6.128	5.547	92283	42474	82.608	82.844
14) L3 AR-1232-4	6.299	5.643	43996	40635	77.519	93.039
15) L3 AR-1232-5	6.399	5.829	29167	40648	84.173	84.176
16) L4 AR-1242-1	6.104	5.335	65013	56793	48.391	44.131
17) L4 AR-1242-2	6.128	5.355	92283	77422	47.252	41.461
18) L4 AR-1242-3	6.194	5.547	55703	42474	45.675	45.240
19) L4 AR-1242-4	6.299	5.643	43996	40635	43.426	46.858
20) L4 AR-1242-5	7.079	6.207	10362	23059	10.858	23.163 #
21) L5 AR-1248-1	6.104	5.335	65013	56793	67.420	61.378
22) L5 AR-1248-2	6.399	5.598	29167	30554	25.218	27.723
23) L5 AR-1248-3	6.613	5.643	45933	40635	32.283	33.573
24) L5 AR-1248-4	7.040	5.829	11285	40648	7.404	27.542 #
25) L5 AR-1248-5	7.079	6.251	10362	385	6.830	0.305 #
26) L6 AR-1254-1	7.011	6.207	39403	23059	28.065	11.725 #
27) L6 AR-1254-2	7.238	6.367	37071	25891	17.784	15.756
28) L6 AR-1254-3	7.618	6.807	53345	54755	23.113	19.996
29) L6 AR-1254-4	7.911	7.026	20963	5118	12.804	3.172 #
30) L6 AR-1254-5	8.338	7.456	87217	95719	51.665	43.717
31) L7 AR-1260-1	7.785	6.925	74188	63761	40.389	31.814
32) L7 AR-1260-2	8.050	7.122	75517	81297	35.054	34.715
33) L7 AR-1260-3	8.415	7.277	56495	80075	34.321	35.221
34) L7 AR-1260-4	8.643	7.760	53430	67338	28.736	36.909 #
35) L7 AR-1260-5	8.958	8.006	143554	177938	38.073	39.538
36) L8 AR-1262-1	8.415	7.498	56495	81147	28.118	34.936
37) L8 AR-1262-2	8.958	8.006	143554	177938	39.496	42.920
38) L8 AR-1262-3	9.272	8.295	102331	37301	39.585	22.001 #
39) L8 AR-1262-4	9.343	8.357	36070	130083	17.520	40.964 #
40) L8 AR-1262-5	9.971	8.854	74365	49626	52.498	30.877 #
41) L9 AR-1268-1	9.272	8.295	102331	37301	23.426	7.619 #

Data Path : Z:\pestpcbsrv\HPCHEM1\ECD_P\Data\PP110420\
 Data File : PP031141.D
 Signal(s) : Signal #1: ECD1A.CH Signal #2: ECD2B.CH
 Acq On : 05 Nov 2020 1:04
 Operator : DD\AJ
 Sample : L4214-07
 Misc : AR1660 LOD 40 PPB
 ALS Vial : 48 Sample Multiplier: 1

Instrument :
 ECD_P
ClientSampleId :
 LOD-MDL-WATER-01-QT4-2020

Integration File signal 1: autoint1.e
 Integration File signal 2: autoint2.e
 Quant Time: Nov 05 05:12:49 2020
 Quant Method : Z:\pestpcbsrv\HPCHEM1\ECD_P\methods\PP110420.M
 Quant Title : GC EXTRACTABLES
 QLast Update : Wed Nov 04 08:24:38 2020
 Response via : Initial Calibration
 Integrator: ChemStation 6890 Scale Mode: Small noise peaks clipped

Volume Inj. : 2 µl
 Signal #1 Phase : ZB-MR1 Signal #2 Phase: ZB-MR2
 Signal #1 Info : 30Mx0.32mmx 0.50µ Signal #2 Info : 30M x 0.32mm x 0.25µm

	Compound	RT#1	RT#2	Resp#1	Resp#2	ng/ml	ng/ml
42)	L9 AR-1268-2	9.343	8.357	36070	130083	8.388	27.352 #
43)	L9 AR-1268-3	9.568	8.572	20507	4352	5.670	1.088 #
44)	L9 AR-1268-4	9.971	8.854	74365	49626	46.951	29.290 #
45)	L9 AR-1268-5	10.361	9.145	59567	18845	4.981	1.405 #

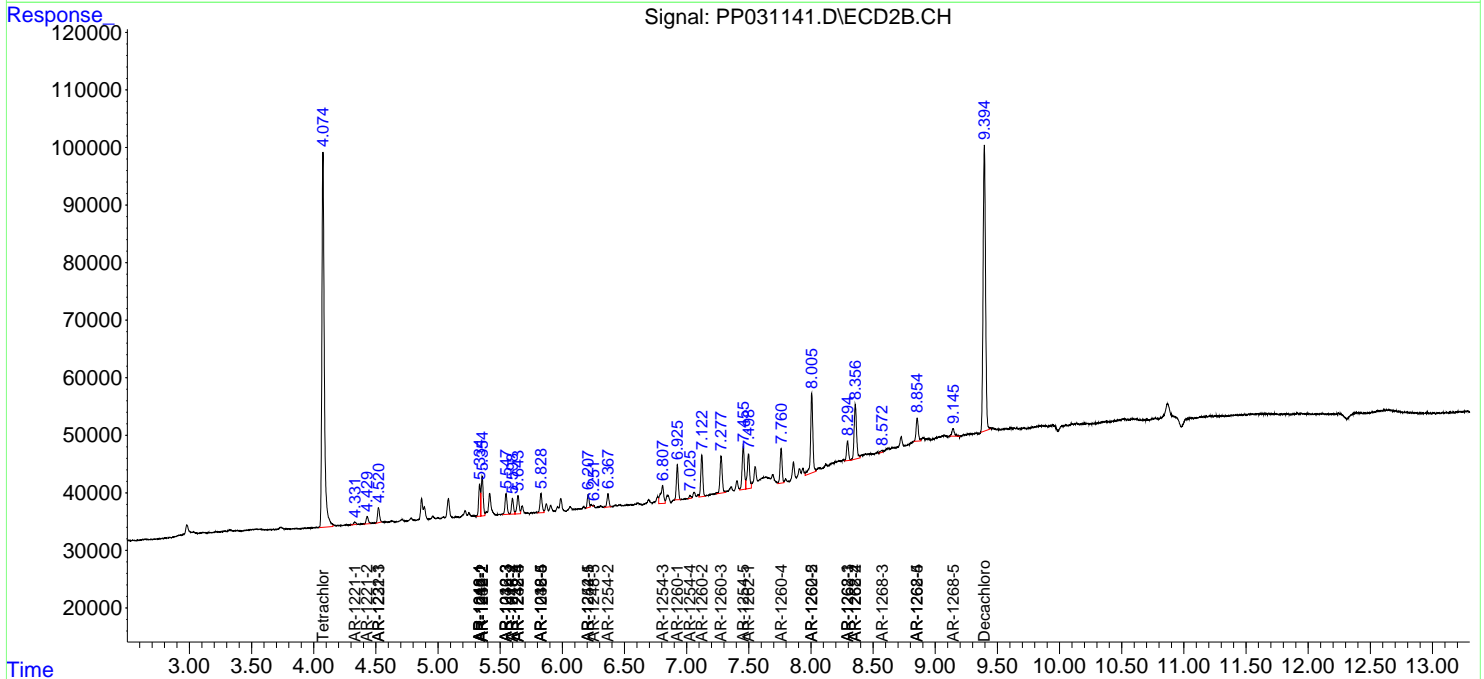
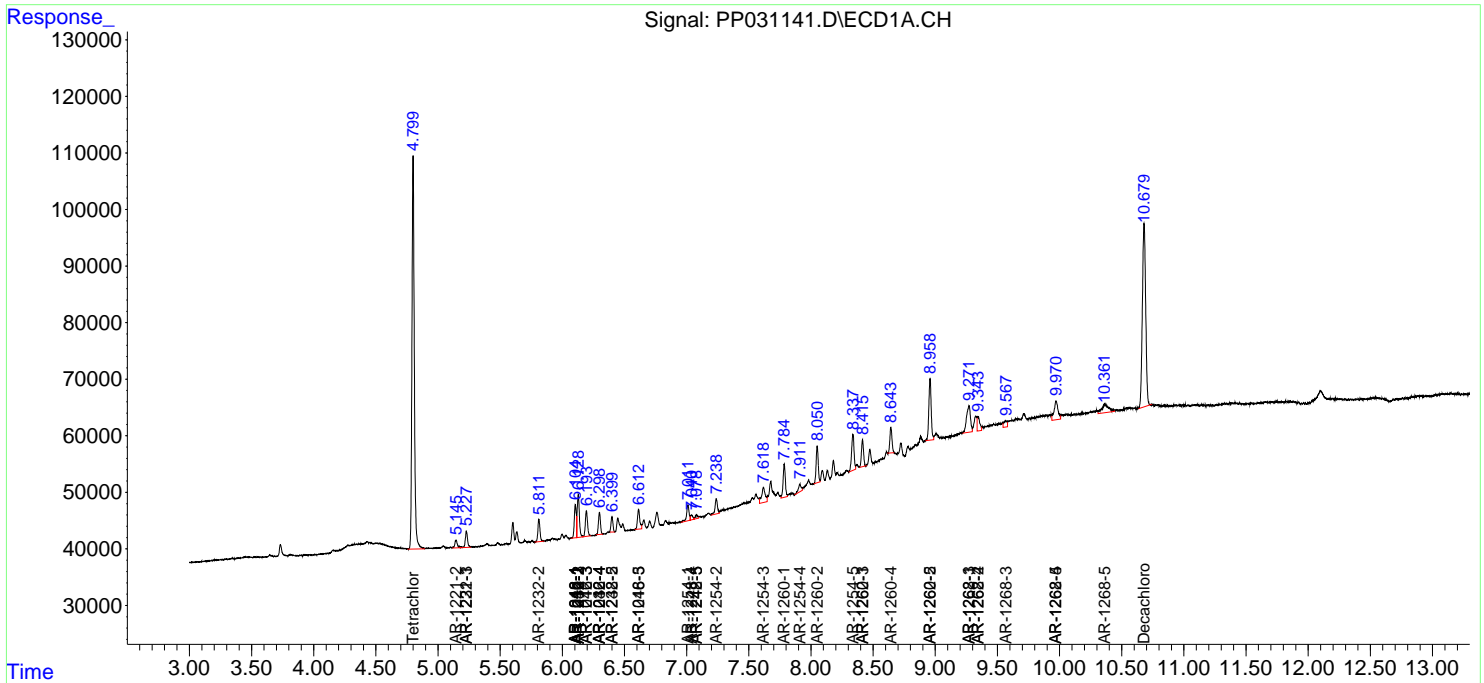
(f)=RT Delta > 1/2 Window (#)=Amounts differ by > 25% (m)=manual int.

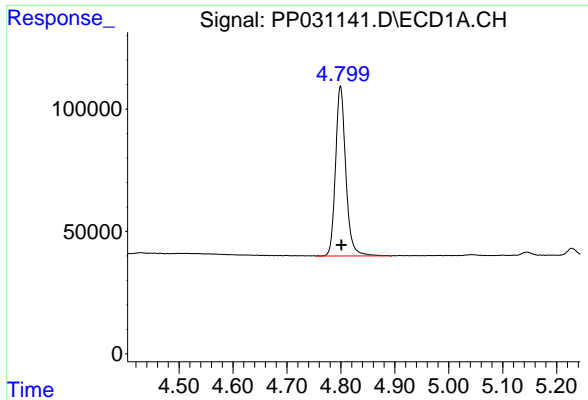
Data Path : Z:\pestpcbsrv\HPCHEM1\ECD_P\Data\PP110420\
 Data File : PP031141.D
 Signal(s) : Signal #1: ECD1A.CH Signal #2: ECD2B.CH
 Acq On : 05 Nov 2020 1:04
 Operator : DD\AJ
 Sample : L4214-07
 Misc : AR1660 LOD 40 PPB
 ALS Vial : 48 Sample Multiplier: 1

Instrument :
 ECD_P
 Client Sampled :
 LOD-MDL-WATER-01-QT4-2020

Integration File signal 1: autoint1.e
 Integration File signal 2: autoint2.e
 Quant Time: Nov 05 05:12:49 2020
 Quant Method : Z:\pestpcbsrv\HPCHEM1\ECD_P\methods\PP110420.M
 Quant Title : GC EXTRACTABLES
 QLast Update : Wed Nov 04 08:24:38 2020
 Response via : Initial Calibration
 Integrator: ChemStation 6890 Scale Mode: Small noise peaks clipped

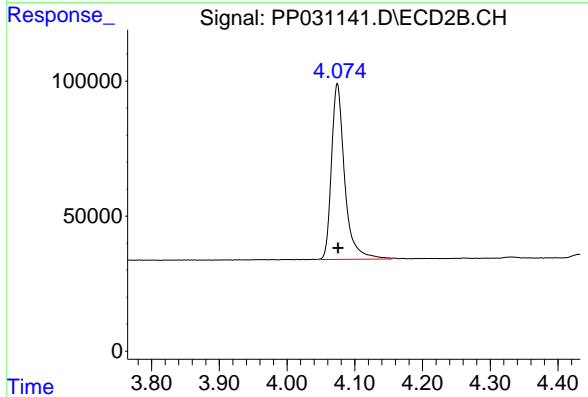
Volume Inj. : 2 µl
 Signal #1 Phase : ZB-MR1 Signal #2 Phase: ZB-MR2
 Signal #1 Info : 30Mx0.32mmx 0.50µ Signal #2 Info : 30M x 0.32mm x 0.25µm



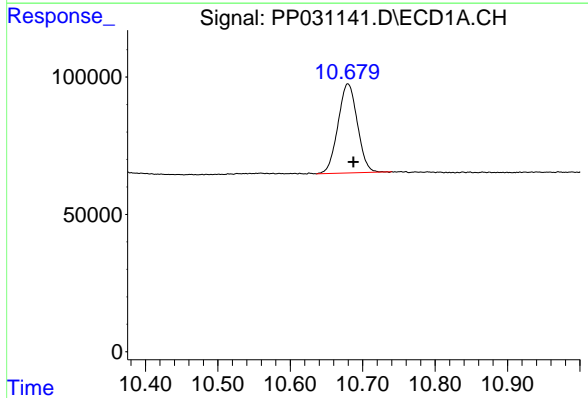


#1 Tetrachloro-m-xylene
 R.T.: 4.799 min
 Delta R.T.: -0.002 min
 Response: 919783
 Conc: 13.77 ng/ml

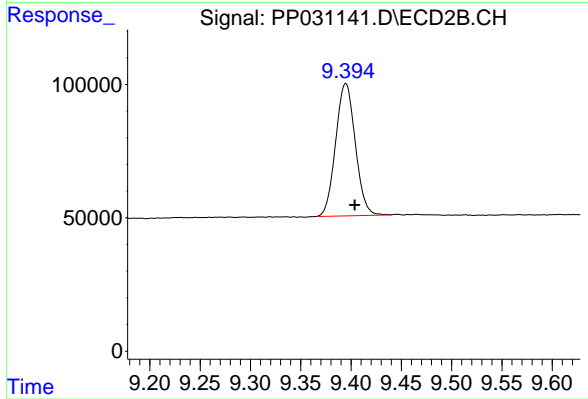
Instrument :
 ECD_P
ClientSampleId :
 LOD-MDL-WATER-01-QT4-2020



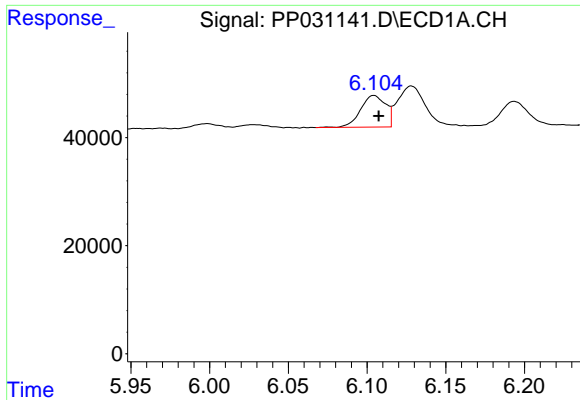
#1 Tetrachloro-m-xylene
 R.T.: 4.074 min
 Delta R.T.: -0.001 min
 Response: 880928
 Conc: 13.25 ng/ml



#2 Decachlorobiphenyl
 R.T.: 10.680 min
 Delta R.T.: -0.008 min
 Response: 601015
 Conc: 15.03 ng/ml

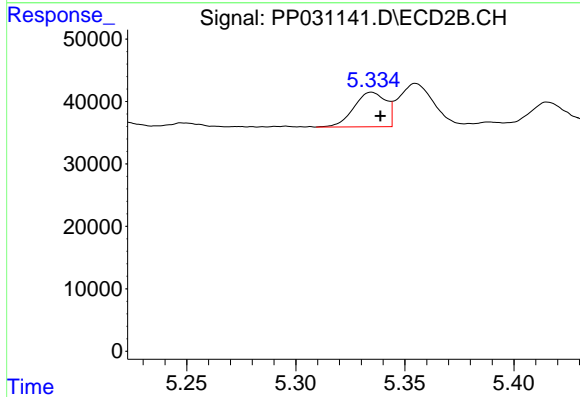


#2 Decachlorobiphenyl
 R.T.: 9.395 min
 Delta R.T.: -0.009 min
 Response: 675441
 Conc: 16.18 ng/ml

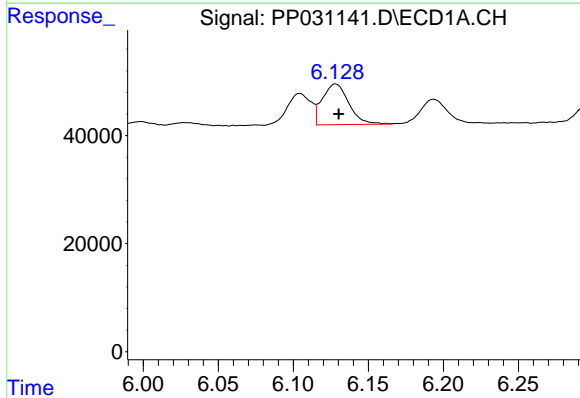


#3 AR-1016-1
 R.T.: 6.104 min
 Delta R.T.: -0.003 min
 Response: 65013
 Conc: 33.39 ng/ml

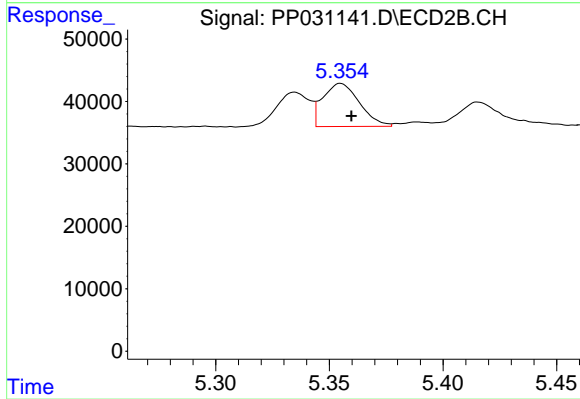
Instrument :
 ECD_P
ClientSampleId :
 LOD-MDL-WATER-01-QT4-2020



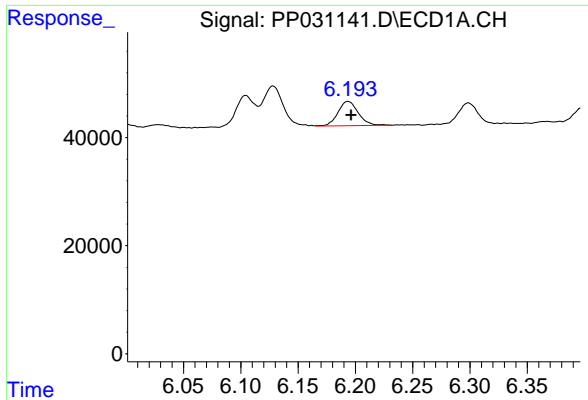
#3 AR-1016-1
 R.T.: 5.335 min
 Delta R.T.: -0.004 min
 Response: 56793
 Conc: 30.61 ng/ml



#4 AR-1016-2
 R.T.: 6.128 min
 Delta R.T.: -0.002 min
 Response: 92283
 Conc: 32.33 ng/ml

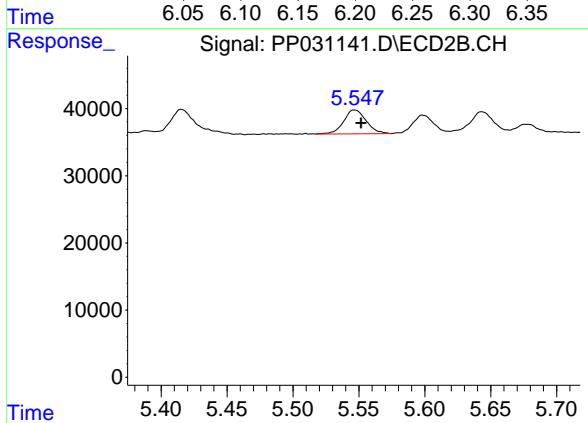


#4 AR-1016-2
 R.T.: 5.355 min
 Delta R.T.: -0.005 min
 Response: 77422
 Conc: 28.48 ng/ml

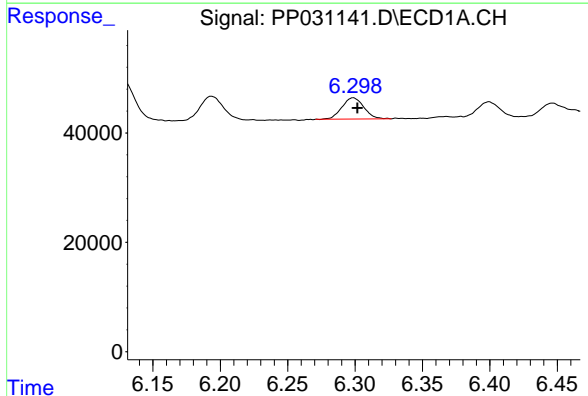


#5 AR-1016-3
 R.T.: 6.194 min
 Delta R.T.: -0.003 min
 Response: 55703
 Conc: 31.98 ng/ml

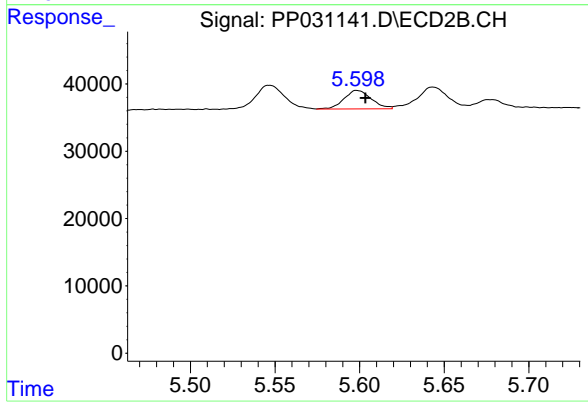
Instrument :
 ECD_P
ClientSampleId :
 LOD-MDL-WATER-01-QT4-2020



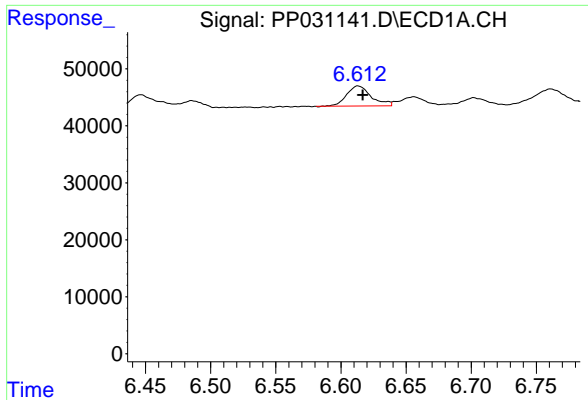
#5 AR-1016-3
 R.T.: 5.547 min
 Delta R.T.: -0.005 min
 Response: 42474
 Conc: 33.53 ng/ml



#6 AR-1016-4
 R.T.: 6.299 min
 Delta R.T.: -0.003 min
 Response: 43996
 Conc: 30.45 ng/ml

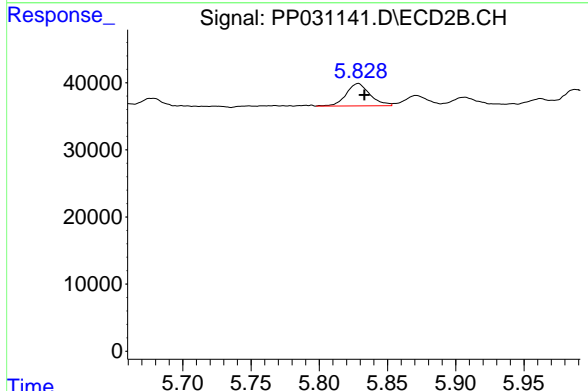


#6 AR-1016-4
 R.T.: 5.598 min
 Delta R.T.: -0.005 min
 Response: 30554
 Conc: 33.13 ng/ml

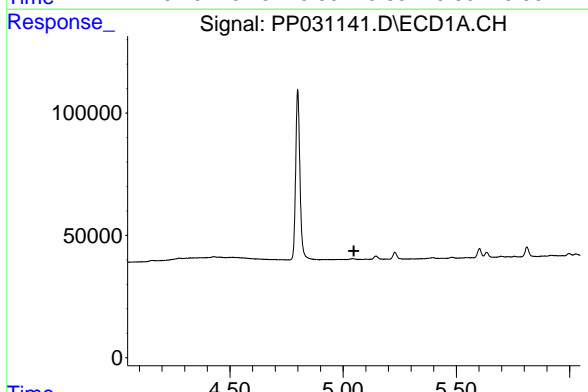


#7 AR-1016-5
 R.T.: 6.613 min
 Delta R.T.: -0.004 min
 Response: 45933
 Conc: 36.85 ng/ml

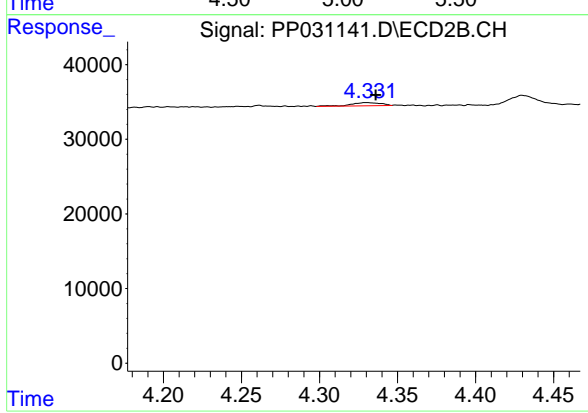
Instrument :
 ECD_P
ClientSampleId :
 LOD-MDL-WATER-01-QT4-2020



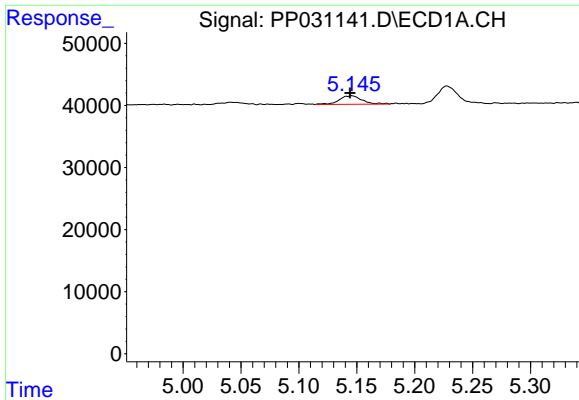
#7 AR-1016-5
 R.T.: 5.829 min
 Delta R.T.: -0.004 min
 Response: 40648
 Conc: 30.97 ng/ml



#8 AR-1221-1
 R.T.: 0.000 min
 Exp R.T. : 5.047 min
 Response: 0
 Conc: N.D.

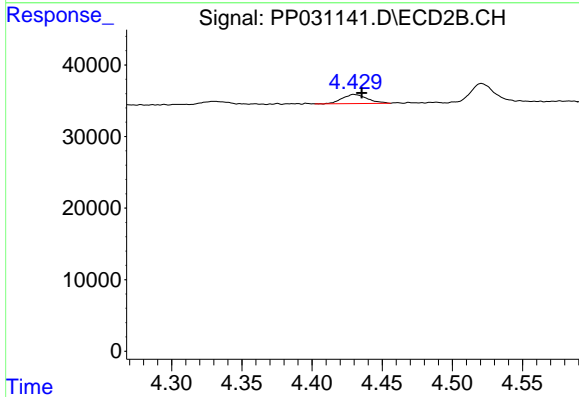


#8 AR-1221-1
 R.T.: 4.331 min
 Delta R.T.: -0.005 min
 Response: 5581
 Conc: 9.91 ng/ml

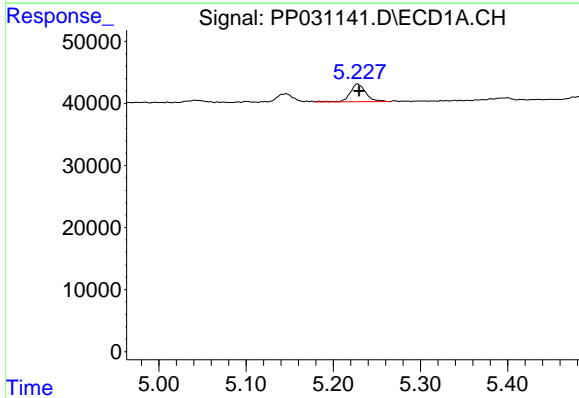


#9 AR-1221-2
 R.T.: 5.146 min
 Delta R.T.: 0.001 min
 Response: 18813
 Conc: 41.88 ng/ml

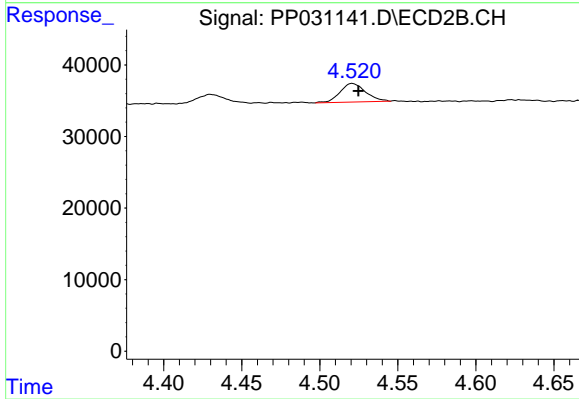
Instrument :
 ECD_P
 ClientSampleId :
 LOD-MDL-WATER-01-QT4-2020



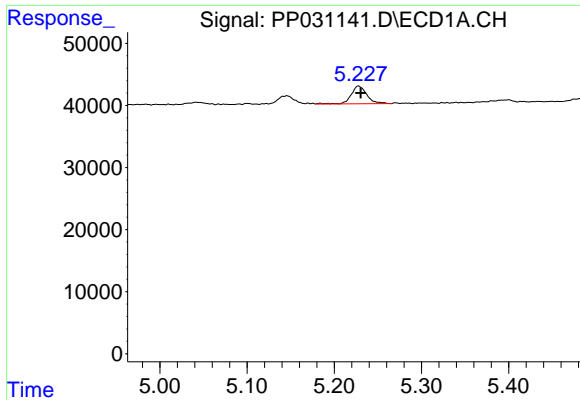
#9 AR-1221-2
 R.T.: 4.430 min
 Delta R.T.: -0.006 min
 Response: 15760
 Conc: 37.99 ng/ml



#10 AR-1221-3
 R.T.: 5.228 min
 Delta R.T.: -0.002 min
 Response: 36294
 Conc: 26.89 ng/ml



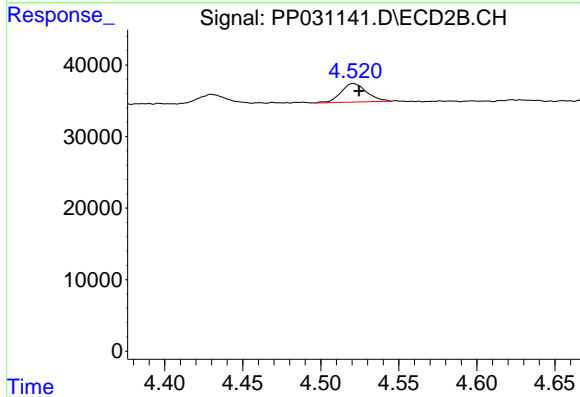
#10 AR-1221-3
 R.T.: 4.521 min
 Delta R.T.: -0.004 min
 Response: 29644
 Conc: 22.60 ng/ml



#11 AR-1232-1

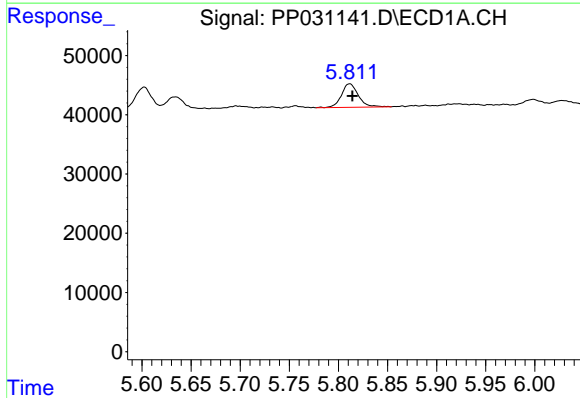
R.T.: 5.228 min
 Delta R.T.: -0.002 min
 Response: 36294
 Conc: 29.68 ng/ml

Instrument :
 ECD_P
ClientSampleId :
 LOD-MDL-WATER-01-QT4-2020



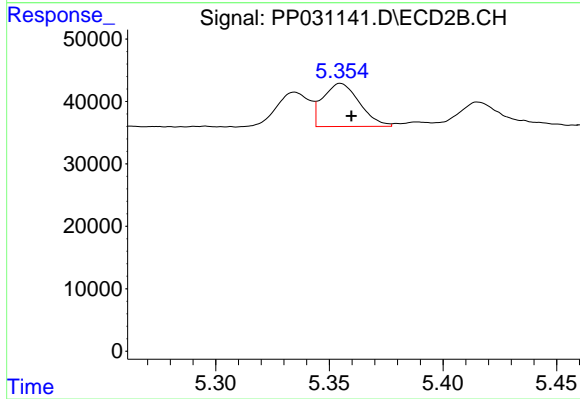
#11 AR-1232-1

R.T.: 4.521 min
 Delta R.T.: -0.004 min
 Response: 29644
 Conc: 24.75 ng/ml



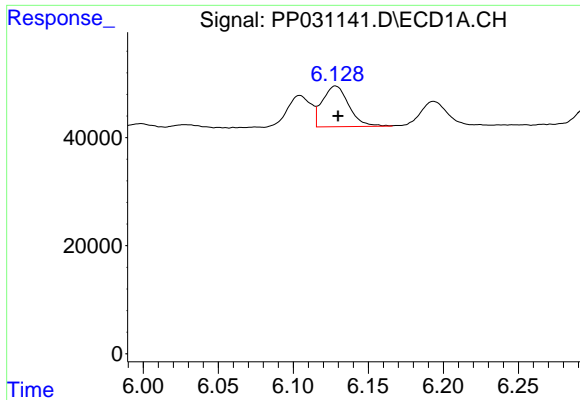
#12 AR-1232-2

R.T.: 5.811 min
 Delta R.T.: -0.003 min
 Response: 47421
 Conc: 78.09 ng/ml



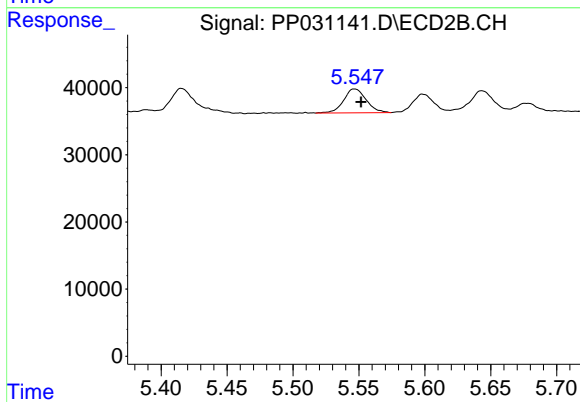
#12 AR-1232-2

R.T.: 5.355 min
 Delta R.T.: -0.005 min
 Response: 77422
 Conc: 72.85 ng/ml

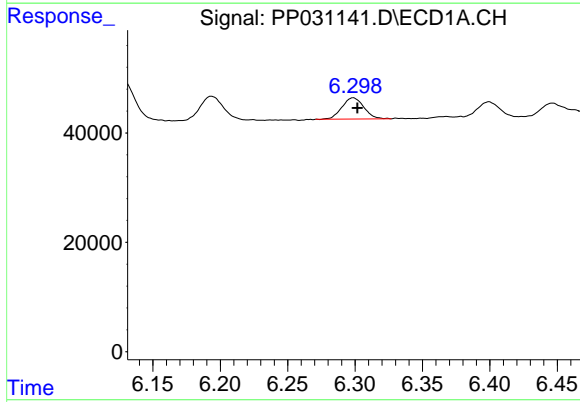


#13 AR-1232-3
 R.T.: 6.128 min
 Delta R.T.: -0.002 min
 Response: 92283
 Conc: 82.61 ng/ml

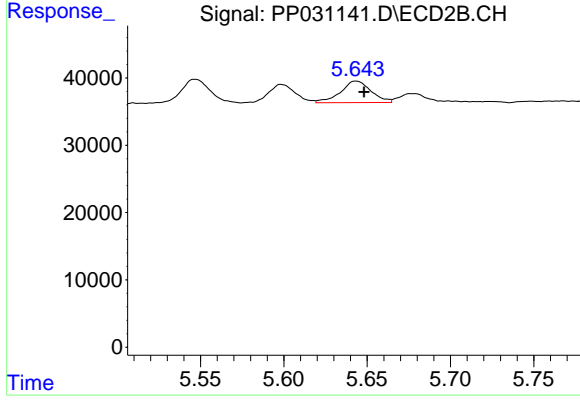
Instrument :
 ECD_P
 ClientSampleId :
 LOD-MDL-WATER-01-QT4-2020



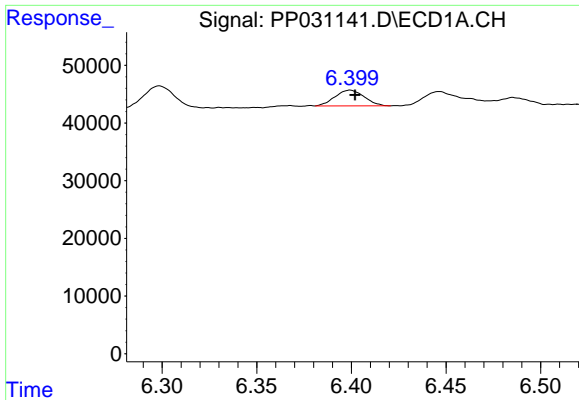
#13 AR-1232-3
 R.T.: 5.547 min
 Delta R.T.: -0.005 min
 Response: 42474
 Conc: 82.84 ng/ml



#14 AR-1232-4
 R.T.: 6.299 min
 Delta R.T.: -0.003 min
 Response: 43996
 Conc: 77.52 ng/ml



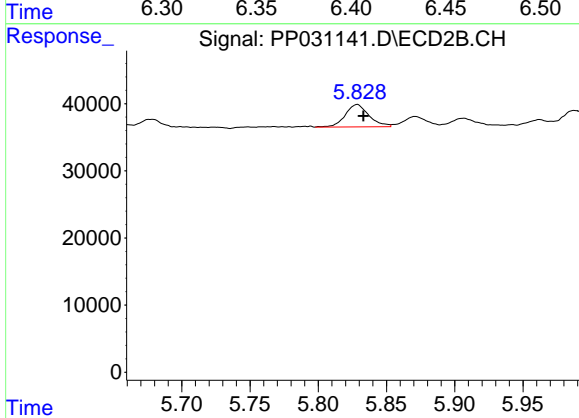
#14 AR-1232-4
 R.T.: 5.643 min
 Delta R.T.: -0.005 min
 Response: 40635
 Conc: 93.04 ng/ml



#15 AR-1232-5

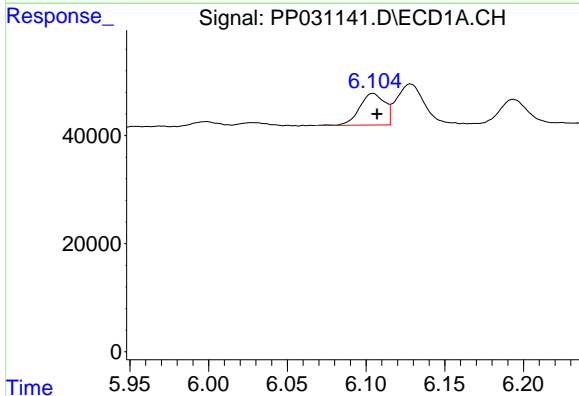
R.T.: 6.399 min
 Delta R.T.: -0.003 min
 Response: 29167
 Conc: 84.17 ng/ml

Instrument :
 ECD_P
ClientSampleId :
 LOD-MDL-WATER-01-QT4-2020



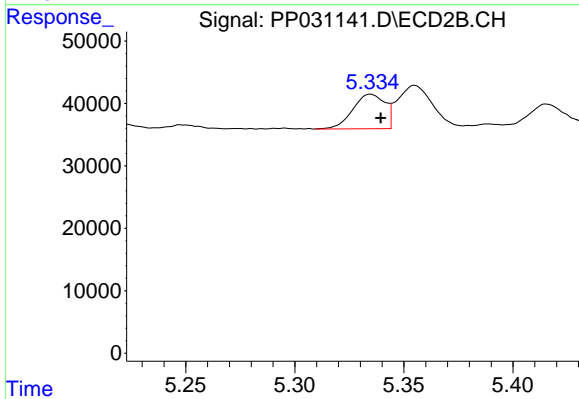
#15 AR-1232-5

R.T.: 5.829 min
 Delta R.T.: -0.004 min
 Response: 40648
 Conc: 84.18 ng/ml



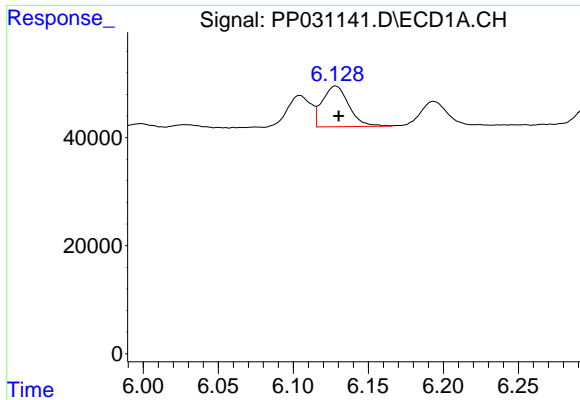
#16 AR-1242-1

R.T.: 6.104 min
 Delta R.T.: -0.003 min
 Response: 65013
 Conc: 48.39 ng/ml



#16 AR-1242-1

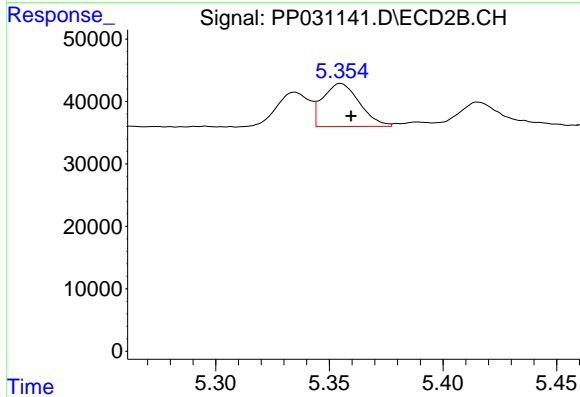
R.T.: 5.335 min
 Delta R.T.: -0.005 min
 Response: 56793
 Conc: 44.13 ng/ml



#17 AR-1242-2

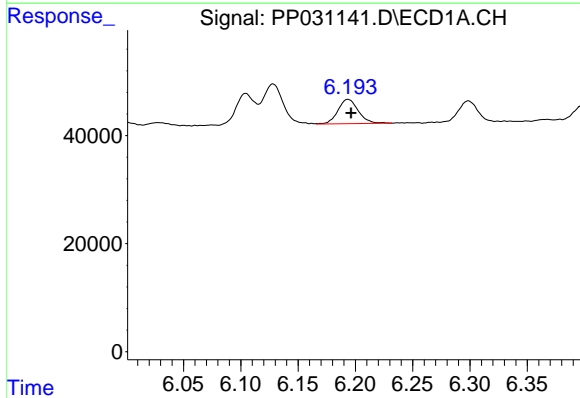
R.T.: 6.128 min
 Delta R.T.: -0.002 min
 Response: 92283
 Conc: 47.25 ng/ml

Instrument :
 ECD_P
ClientSampleId :
 LOD-MDL-WATER-01-QT4-2020



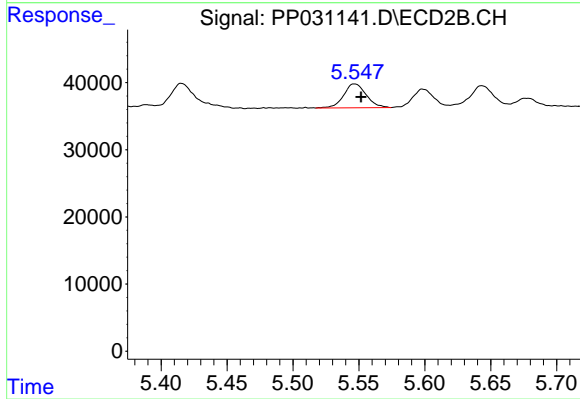
#17 AR-1242-2

R.T.: 5.355 min
 Delta R.T.: -0.005 min
 Response: 77422
 Conc: 41.46 ng/ml



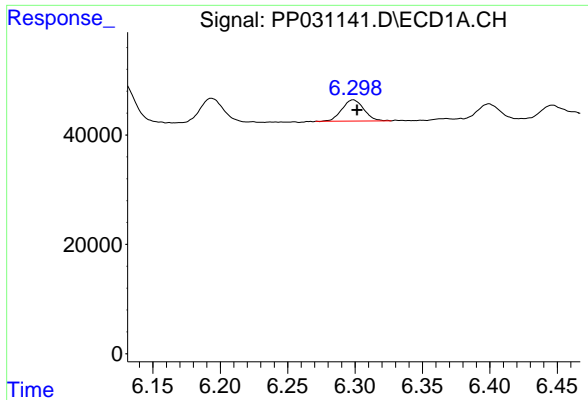
#18 AR-1242-3

R.T.: 6.194 min
 Delta R.T.: -0.003 min
 Response: 55703
 Conc: 45.67 ng/ml



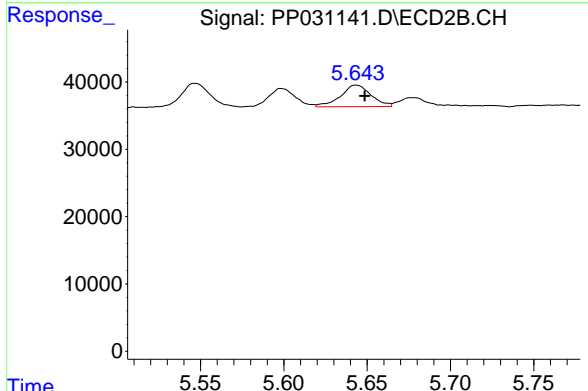
#18 AR-1242-3

R.T.: 5.547 min
 Delta R.T.: -0.005 min
 Response: 42474
 Conc: 45.24 ng/ml

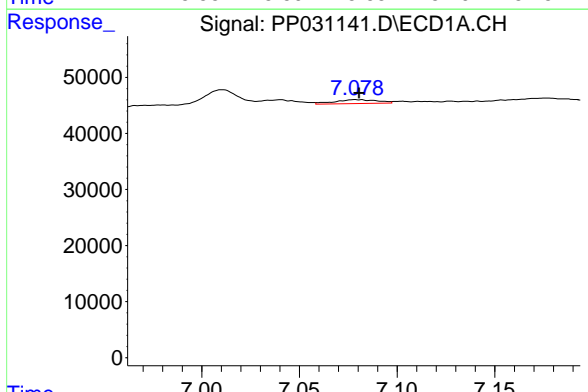


#19 AR-1242-4
 R.T.: 6.299 min
 Delta R.T.: -0.003 min
 Response: 43996
 Conc: 43.43 ng/ml

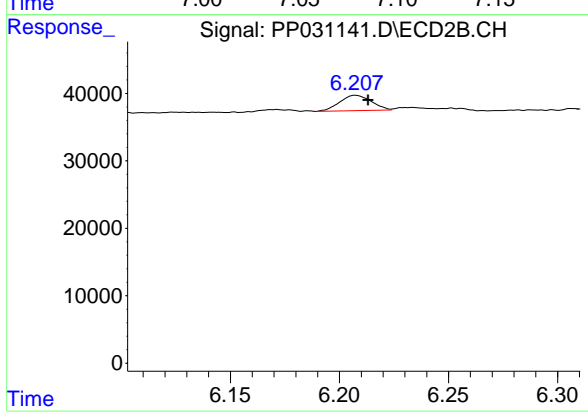
Instrument :
 ECD_P
ClientSampleId :
 LOD-MDL-WATER-01-QT4-2020



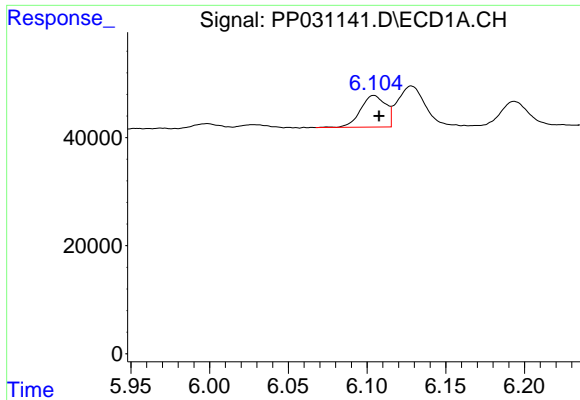
#19 AR-1242-4
 R.T.: 5.643 min
 Delta R.T.: -0.005 min
 Response: 40635
 Conc: 46.86 ng/ml



#20 AR-1242-5
 R.T.: 7.079 min
 Delta R.T.: -0.001 min
 Response: 10362
 Conc: 10.86 ng/ml



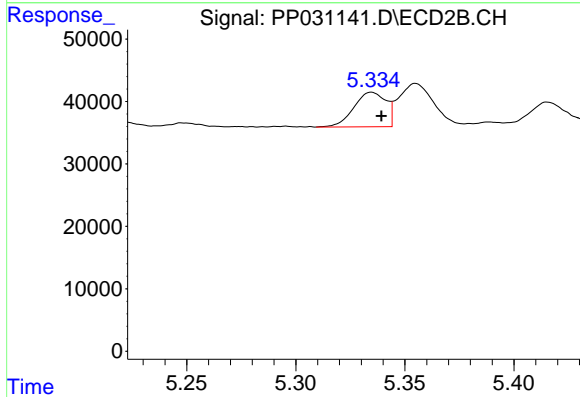
#20 AR-1242-5
 R.T.: 6.207 min
 Delta R.T.: -0.006 min
 Response: 23059
 Conc: 23.16 ng/ml



#21 AR-1248-1

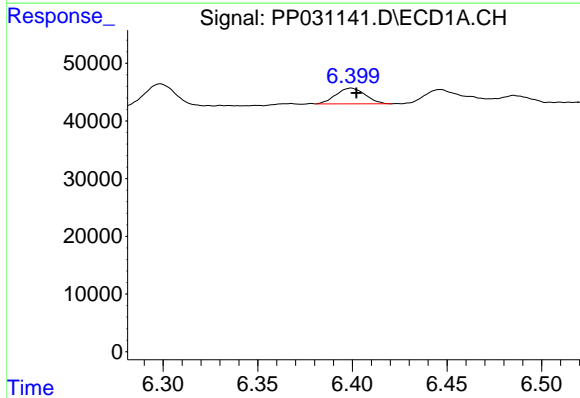
R.T.: 6.104 min
 Delta R.T.: -0.003 min
 Response: 65013
 Conc: 67.42 ng/ml

Instrument :
 ECD_P
ClientSampleId :
 LOD-MDL-WATER-01-QT4-2020



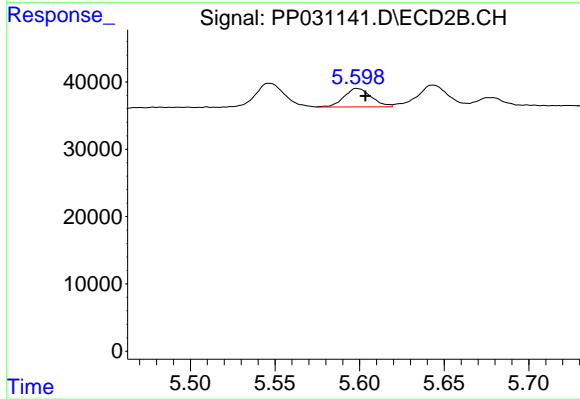
#21 AR-1248-1

R.T.: 5.335 min
 Delta R.T.: -0.004 min
 Response: 56793
 Conc: 61.38 ng/ml



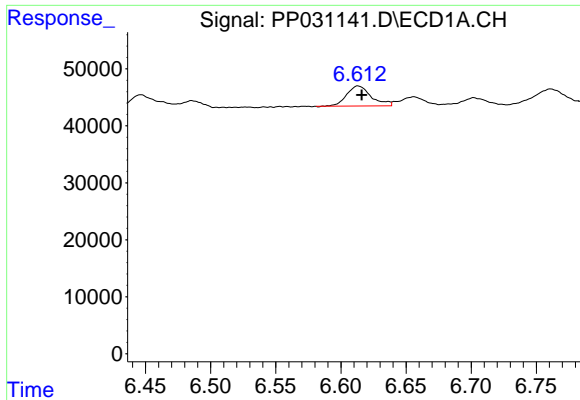
#22 AR-1248-2

R.T.: 6.399 min
 Delta R.T.: -0.003 min
 Response: 29167
 Conc: 25.22 ng/ml



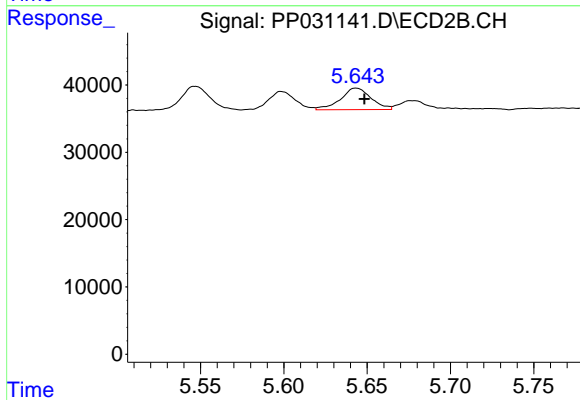
#22 AR-1248-2

R.T.: 5.598 min
 Delta R.T.: -0.005 min
 Response: 30554
 Conc: 27.72 ng/ml

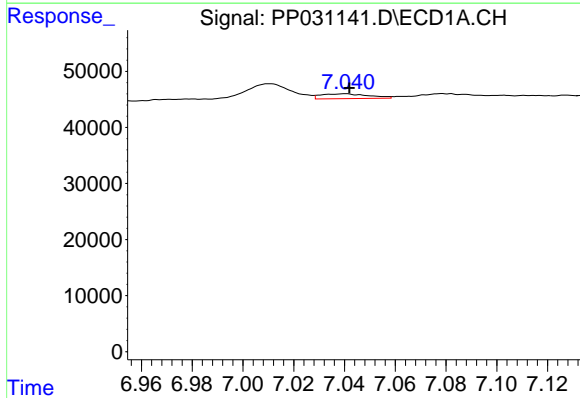


#23 AR-1248-3
 R.T.: 6.613 min
 Delta R.T.: -0.003 min
 Response: 45933
 Conc: 32.28 ng/ml

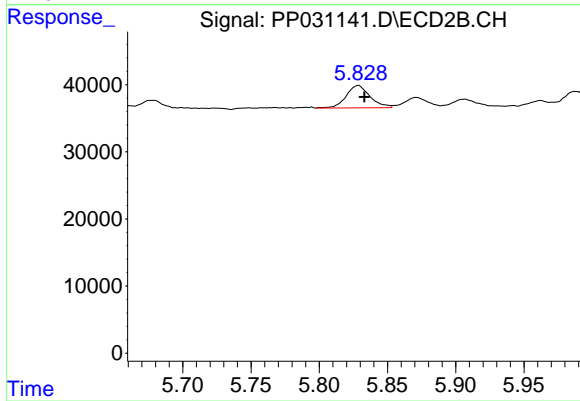
Instrument :
 ECD_P
ClientSampleId :
 LOD-MDL-WATER-01-QT4-2020



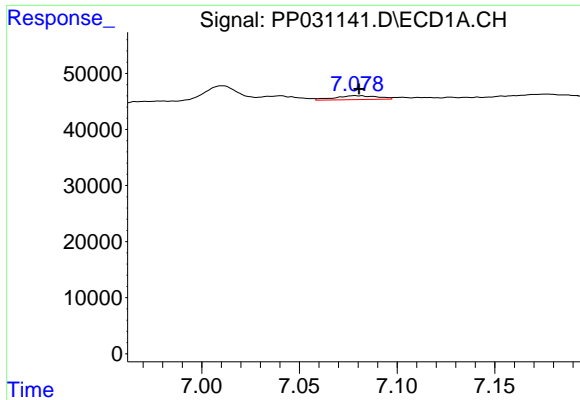
#23 AR-1248-3
 R.T.: 5.643 min
 Delta R.T.: -0.005 min
 Response: 40635
 Conc: 33.57 ng/ml



#24 AR-1248-4
 R.T.: 7.040 min
 Delta R.T.: -0.002 min
 Response: 11285
 Conc: 7.40 ng/ml



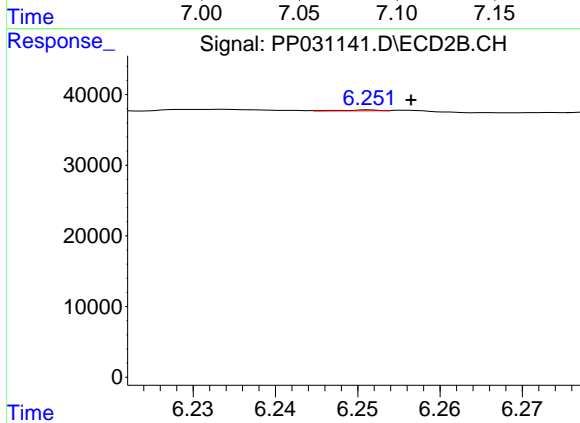
#24 AR-1248-4
 R.T.: 5.829 min
 Delta R.T.: -0.004 min
 Response: 40648
 Conc: 27.54 ng/ml



#25 AR-1248-5

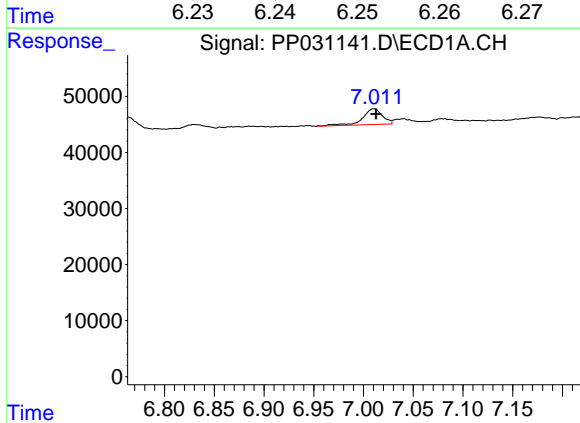
R.T.: 7.079 min
 Delta R.T.: -0.001 min
 Response: 10362
 Conc: 6.83 ng/ml

Instrument :
 ECD_P
 ClientSampleId :
 LOD-MDL-WATER-01-QT4-2020



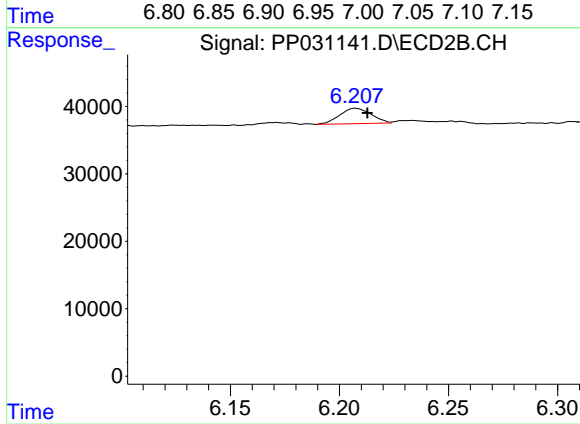
#25 AR-1248-5

R.T.: 6.251 min
 Delta R.T.: -0.005 min
 Response: 385
 Conc: 0.30 ng/ml



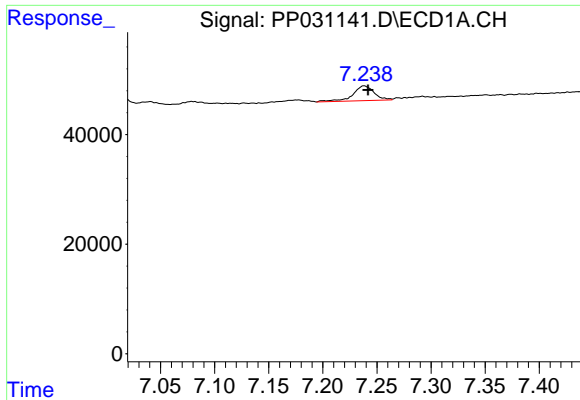
#26 AR-1254-1

R.T.: 7.011 min
 Delta R.T.: -0.002 min
 Response: 39403
 Conc: 28.06 ng/ml



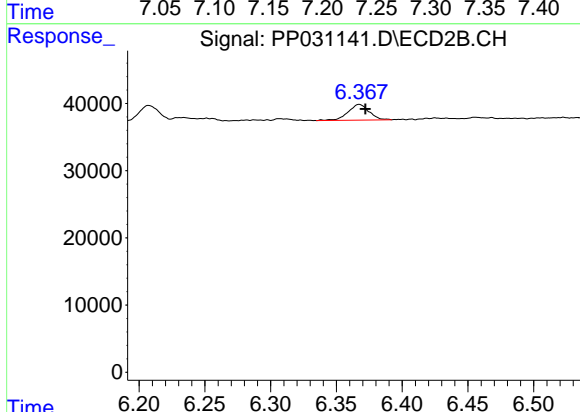
#26 AR-1254-1

R.T.: 6.207 min
 Delta R.T.: -0.006 min
 Response: 23059
 Conc: 11.72 ng/ml

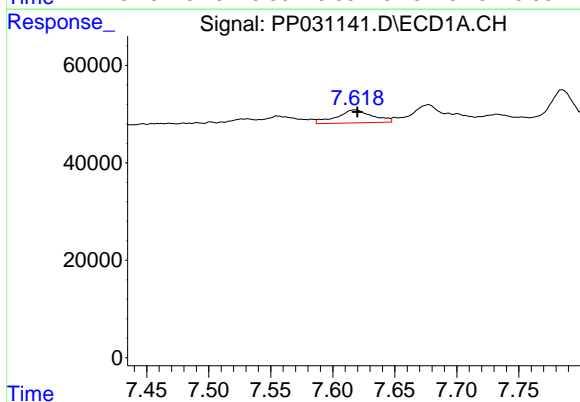


#27 AR-1254-2
 R.T.: 7.238 min
 Delta R.T.: -0.004 min
 Response: 37071
 Conc: 17.78 ng/ml

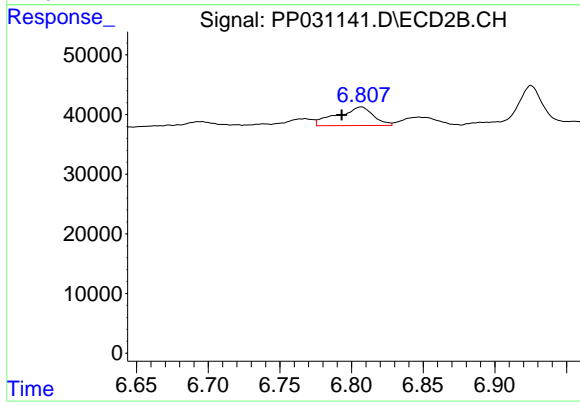
Instrument :
 ECD_P
ClientSampleId :
 LOD-MDL-WATER-01-QT4-2020



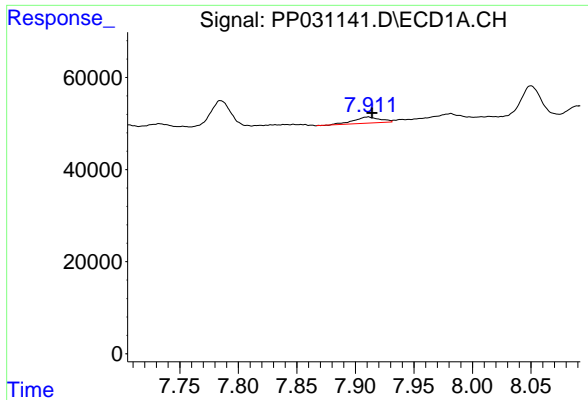
#27 AR-1254-2
 R.T.: 6.367 min
 Delta R.T.: -0.005 min
 Response: 25891
 Conc: 15.76 ng/ml



#28 AR-1254-3
 R.T.: 7.618 min
 Delta R.T.: -0.002 min
 Response: 53345
 Conc: 23.11 ng/ml

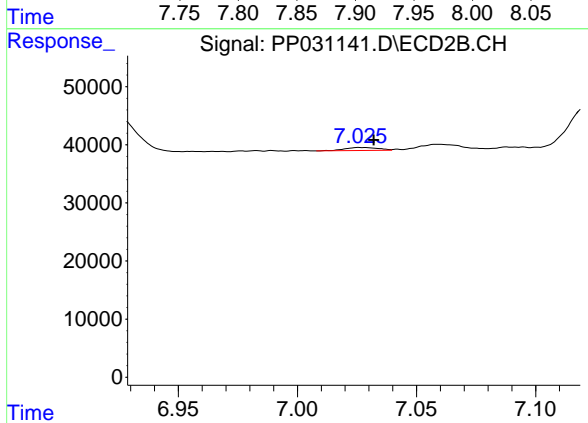


#28 AR-1254-3
 R.T.: 6.807 min
 Delta R.T.: 0.014 min
 Response: 54755
 Conc: 20.00 ng/ml

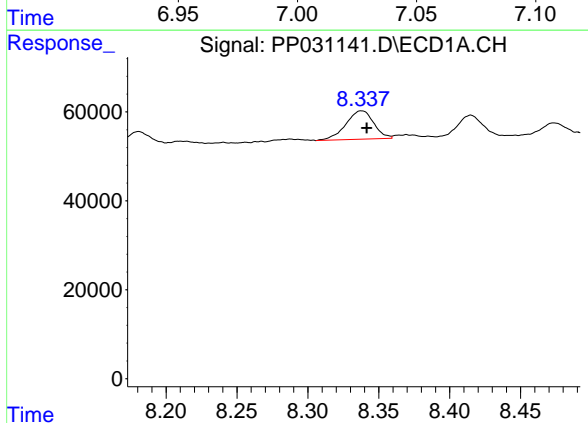


#29 AR-1254-4
 R.T.: 7.911 min
 Delta R.T.: -0.004 min
 Response: 20963
 Conc: 12.80 ng/ml

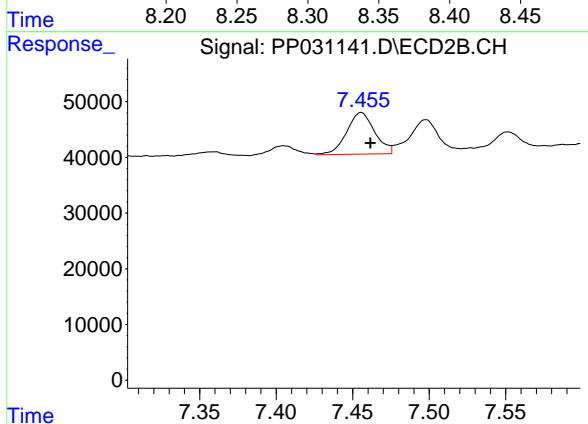
Instrument :
 ECD_P
 ClientSampleId :
 LOD-MDL-WATER-01-QT4-2020



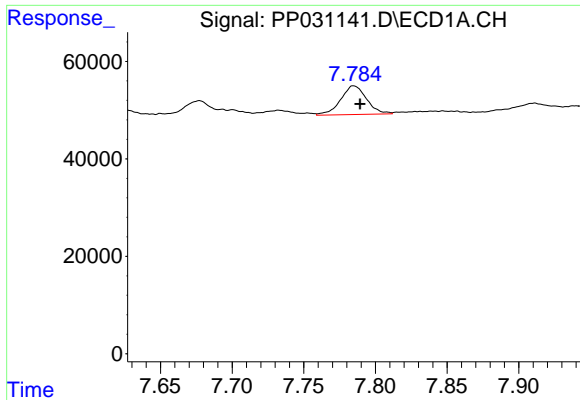
#29 AR-1254-4
 R.T.: 7.026 min
 Delta R.T.: -0.006 min
 Response: 5118
 Conc: 3.17 ng/ml



#30 AR-1254-5
 R.T.: 8.338 min
 Delta R.T.: -0.003 min
 Response: 87217
 Conc: 51.67 ng/ml

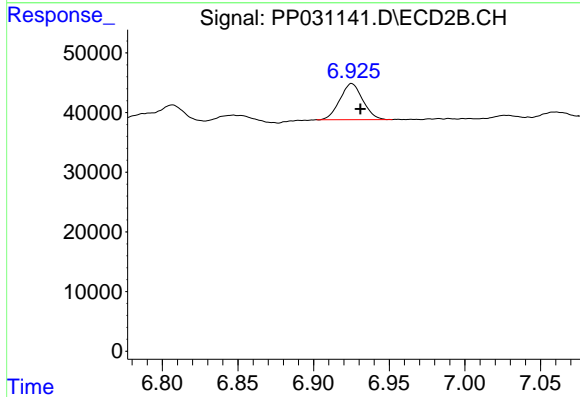


#30 AR-1254-5
 R.T.: 7.456 min
 Delta R.T.: -0.006 min
 Response: 95719
 Conc: 43.72 ng/ml

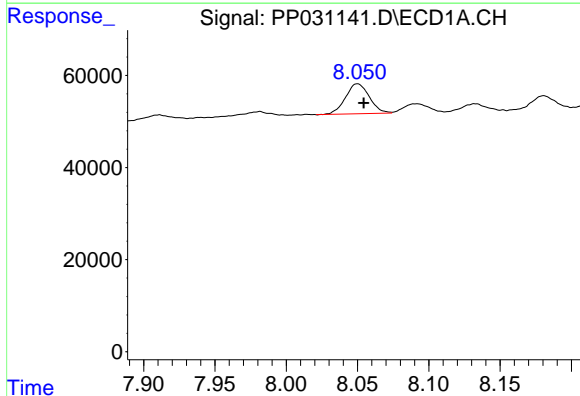


#31 AR-1260-1
 R.T.: 7.785 min
 Delta R.T.: -0.004 min
 Response: 74188
 Conc: 40.39 ng/ml

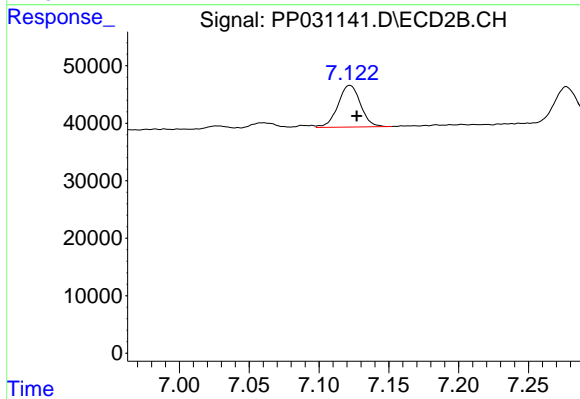
Instrument :
 ECD_P
 ClientSampleId :
 LOD-MDL-WATER-01-QT4-2020



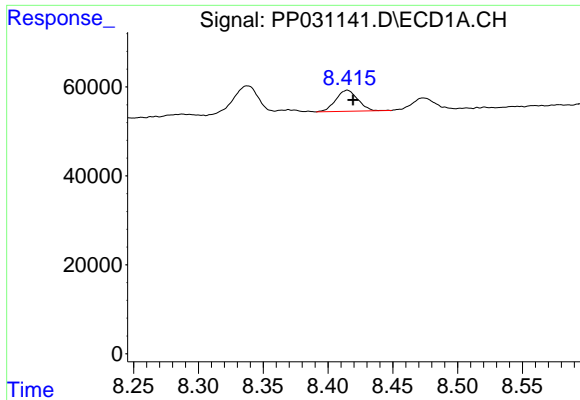
#31 AR-1260-1
 R.T.: 6.925 min
 Delta R.T.: -0.006 min
 Response: 63761
 Conc: 31.81 ng/ml



#32 AR-1260-2
 R.T.: 8.050 min
 Delta R.T.: -0.004 min
 Response: 75517
 Conc: 35.05 ng/ml

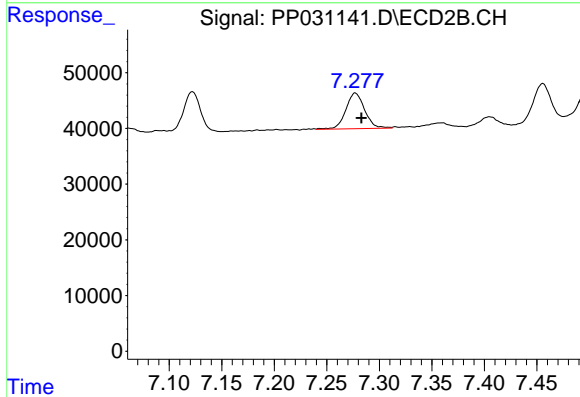


#32 AR-1260-2
 R.T.: 7.122 min
 Delta R.T.: -0.005 min
 Response: 81297
 Conc: 34.72 ng/ml

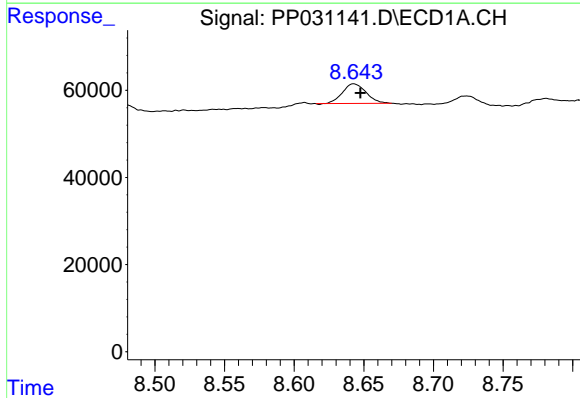


#33 AR-1260-3
 R.T.: 8.415 min
 Delta R.T.: -0.004 min
 Response: 56495
 Conc: 34.32 ng/ml

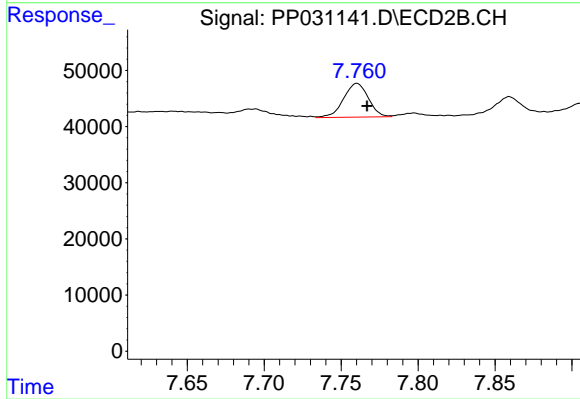
Instrument :
 ECD_P
ClientSampleId :
 LOD-MDL-WATER-01-QT4-2020



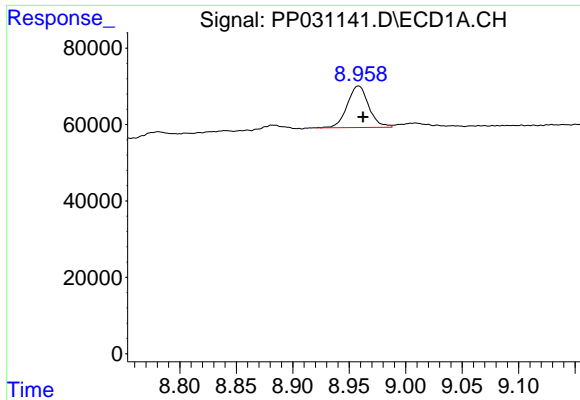
#33 AR-1260-3
 R.T.: 7.277 min
 Delta R.T.: -0.006 min
 Response: 80075
 Conc: 35.22 ng/ml



#34 AR-1260-4
 R.T.: 8.643 min
 Delta R.T.: -0.005 min
 Response: 53430
 Conc: 28.74 ng/ml



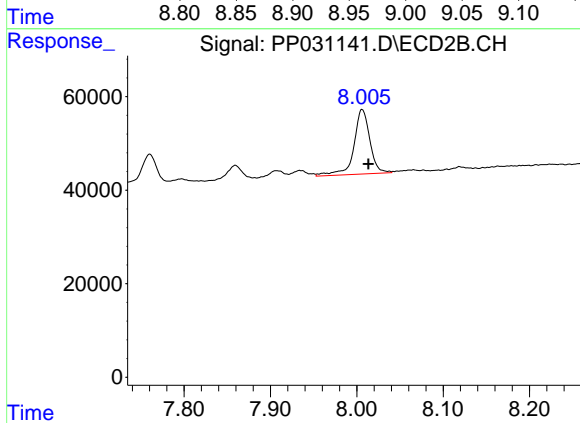
#34 AR-1260-4
 R.T.: 7.760 min
 Delta R.T.: -0.007 min
 Response: 67338
 Conc: 36.91 ng/ml



#35 AR-1260-5

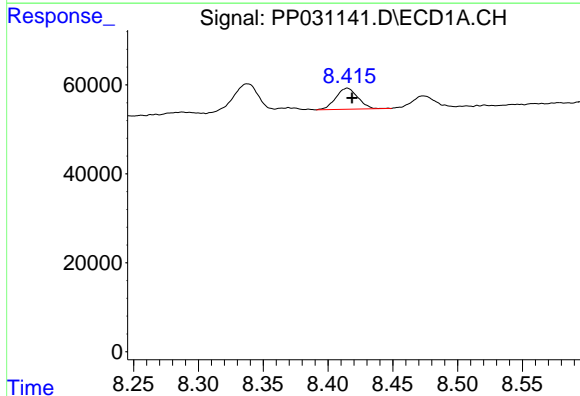
R.T.: 8.958 min
 Delta R.T.: -0.004 min
 Response: 143554
 Conc: 38.07 ng/ml

Instrument :
 ECD_P
 ClientSampleId :
 LOD-MDL-WATER-01-QT4-2020



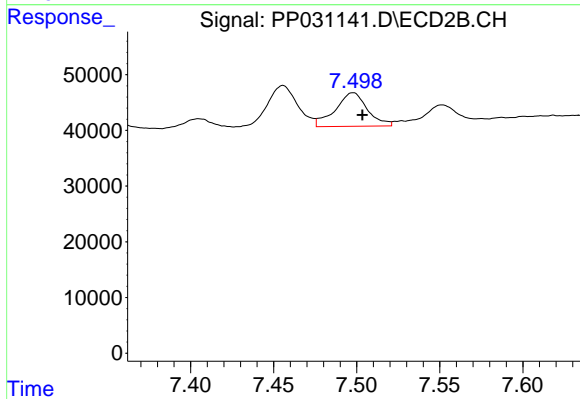
#35 AR-1260-5

R.T.: 8.006 min
 Delta R.T.: -0.007 min
 Response: 177938
 Conc: 39.54 ng/ml



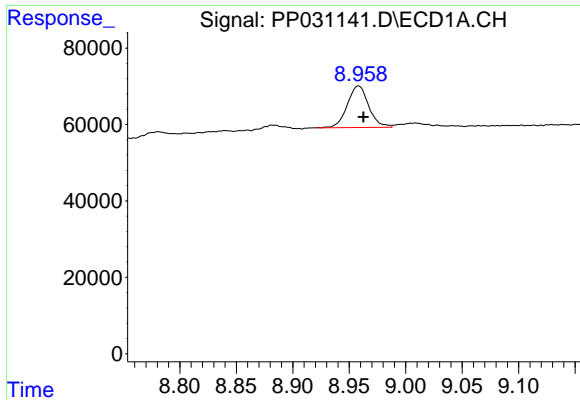
#36 AR-1262-1

R.T.: 8.415 min
 Delta R.T.: -0.004 min
 Response: 56495
 Conc: 28.12 ng/ml



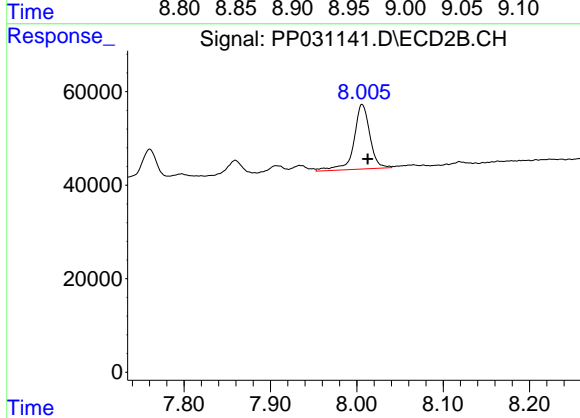
#36 AR-1262-1

R.T.: 7.498 min
 Delta R.T.: -0.006 min
 Response: 81147
 Conc: 34.94 ng/ml

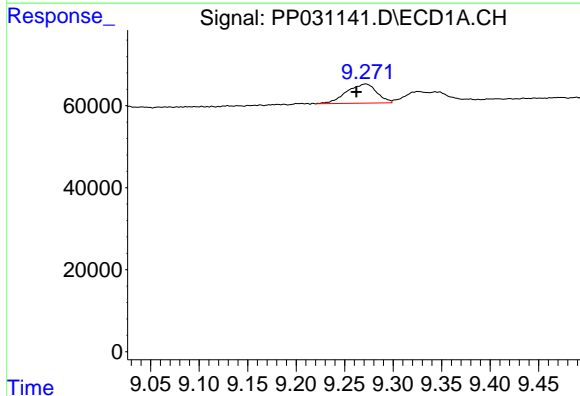


#37 AR-1262-2
 R.T.: 8.958 min
 Delta R.T.: -0.004 min
 Response: 143554
 Conc: 39.50 ng/ml

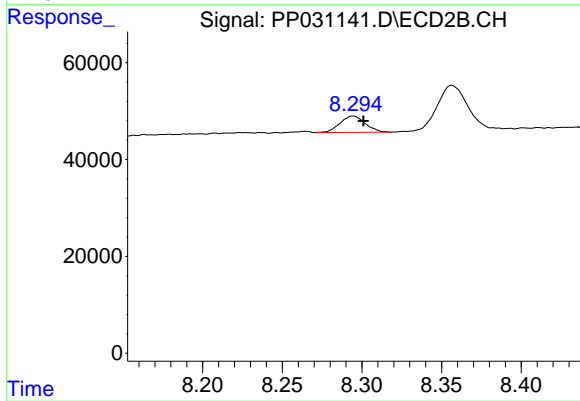
Instrument :
 ECD_P
ClientSampleId :
 LOD-MDL-WATER-01-QT4-2020



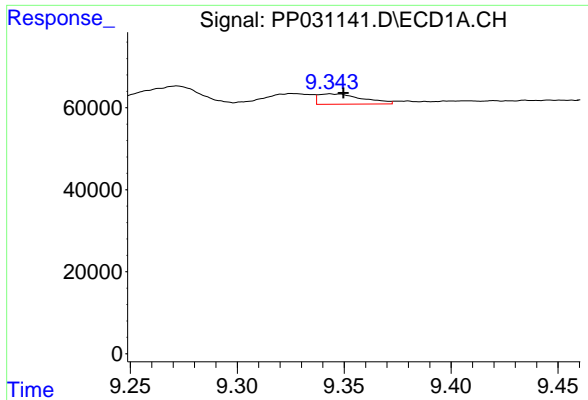
#37 AR-1262-2
 R.T.: 8.006 min
 Delta R.T.: -0.007 min
 Response: 177938
 Conc: 42.92 ng/ml



#38 AR-1262-3
 R.T.: 9.272 min
 Delta R.T.: 0.009 min
 Response: 102331
 Conc: 39.59 ng/ml

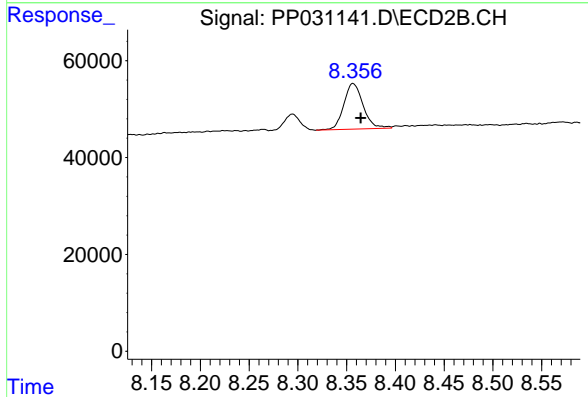


#38 AR-1262-3
 R.T.: 8.295 min
 Delta R.T.: -0.006 min
 Response: 37301
 Conc: 22.00 ng/ml

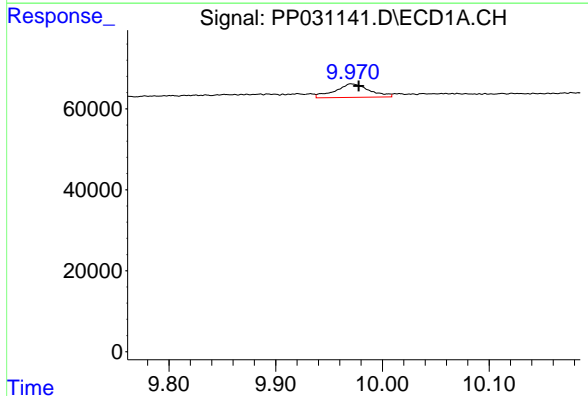


#39 AR-1262-4
 R.T.: 9.343 min
 Delta R.T.: -0.006 min
 Response: 36070
 Conc: 17.52 ng/ml

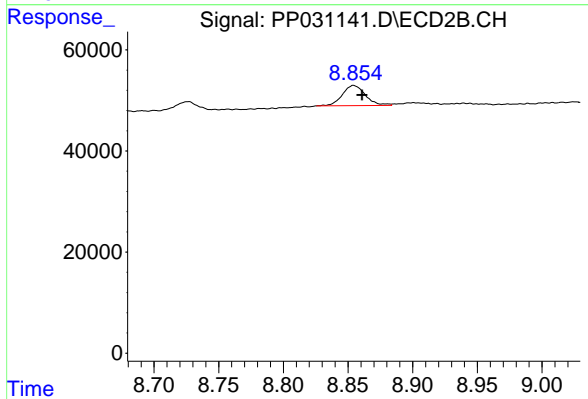
Instrument :
 ECD_P
ClientSampleId :
 LOD-MDL-WATER-01-QT4-2020



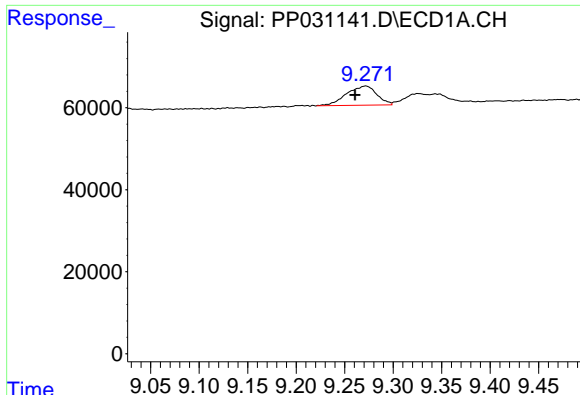
#39 AR-1262-4
 R.T.: 8.357 min
 Delta R.T.: -0.008 min
 Response: 130083
 Conc: 40.96 ng/ml



#40 AR-1262-5
 R.T.: 9.971 min
 Delta R.T.: -0.007 min
 Response: 74365
 Conc: 52.50 ng/ml

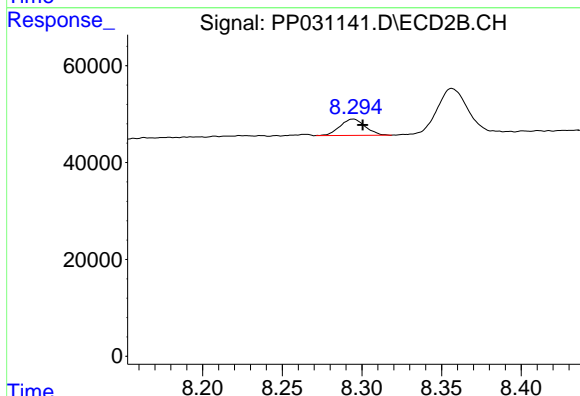


#40 AR-1262-5
 R.T.: 8.854 min
 Delta R.T.: -0.006 min
 Response: 49626
 Conc: 30.88 ng/ml

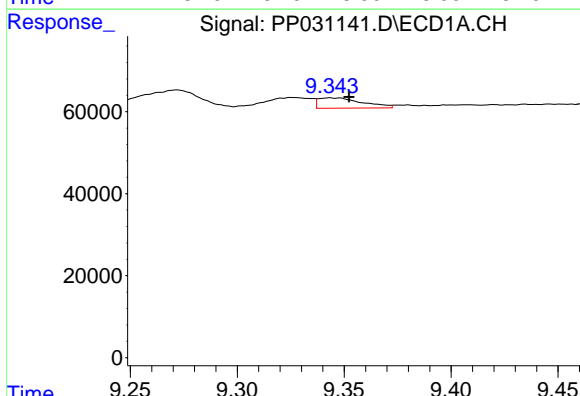


#41 AR-1268-1
 R.T.: 9.272 min
 Delta R.T.: 0.011 min
 Response: 102331
 Conc: 23.43 ng/ml

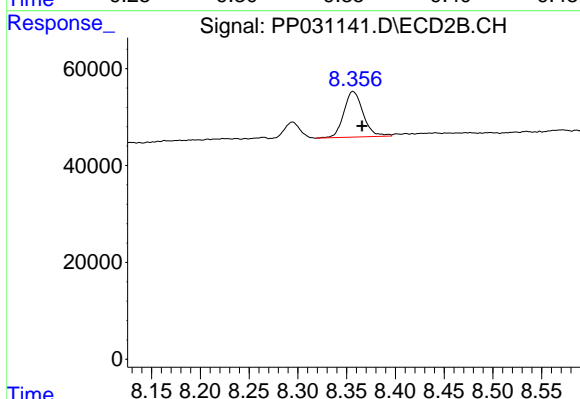
Instrument :
 ECD_P
 ClientSampleId :
 LOD-MDL-WATER-01-QT4-2020



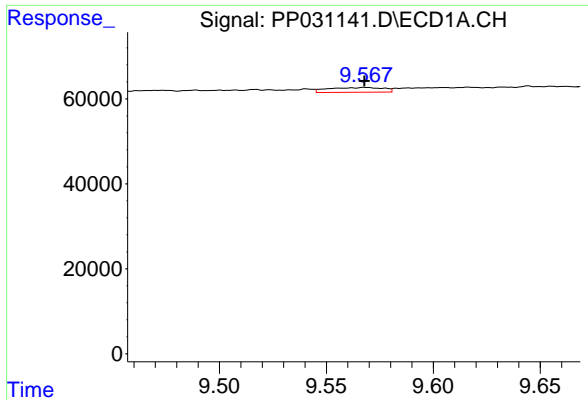
#41 AR-1268-1
 R.T.: 8.295 min
 Delta R.T.: -0.006 min
 Response: 37301
 Conc: 7.62 ng/ml



#42 AR-1268-2
 R.T.: 9.343 min
 Delta R.T.: -0.009 min
 Response: 36070
 Conc: 8.39 ng/ml

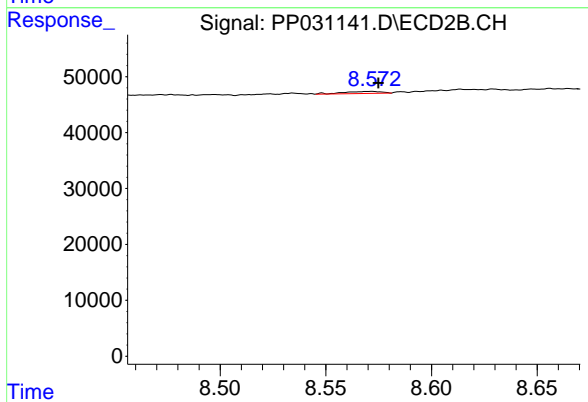


#42 AR-1268-2
 R.T.: 8.357 min
 Delta R.T.: -0.009 min
 Response: 130083
 Conc: 27.35 ng/ml

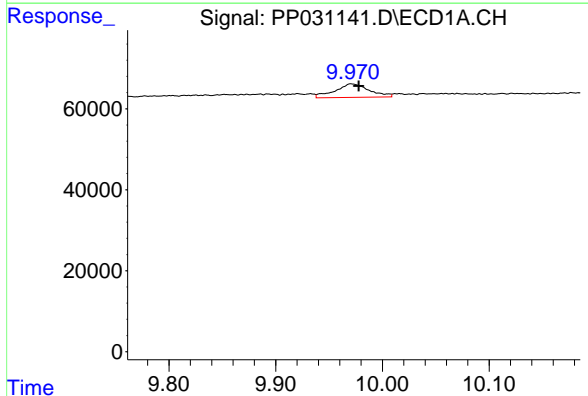


#43 AR-1268-3
 R.T.: 9.568 min
 Delta R.T.: 0.000 min
 Response: 20507
 Conc: 5.67 ng/ml

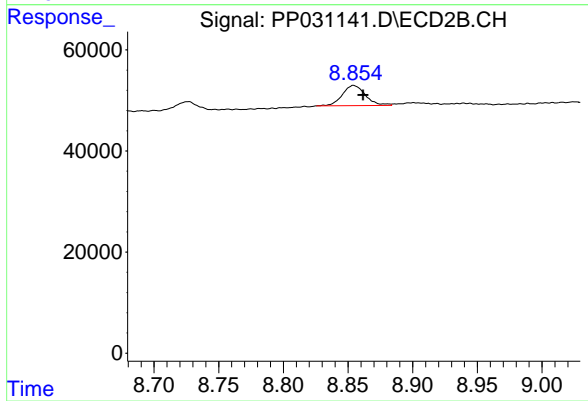
Instrument :
 ECD_P
ClientSampleId :
 LOD-MDL-WATER-01-QT4-2020



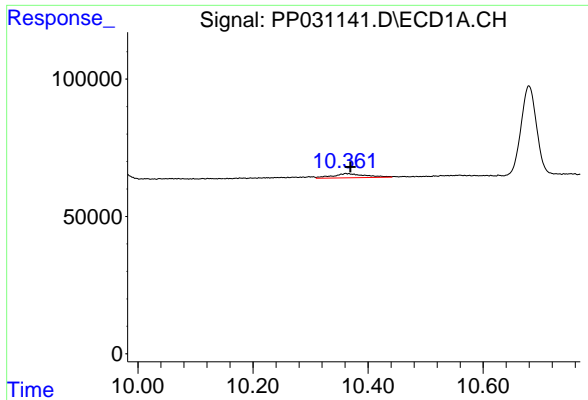
#43 AR-1268-3
 R.T.: 8.572 min
 Delta R.T.: -0.003 min
 Response: 4352
 Conc: 1.09 ng/ml



#44 AR-1268-4
 R.T.: 9.971 min
 Delta R.T.: -0.007 min
 Response: 74365
 Conc: 46.95 ng/ml



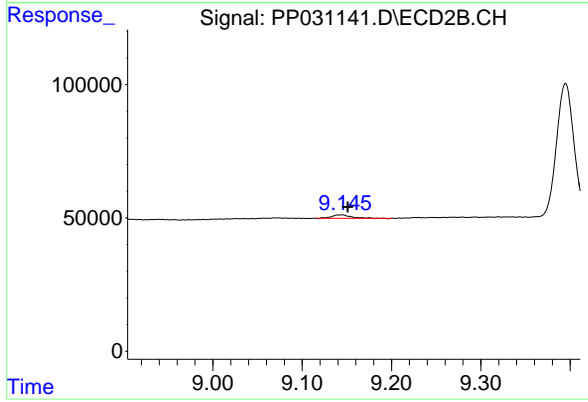
#44 AR-1268-4
 R.T.: 8.854 min
 Delta R.T.: -0.007 min
 Response: 49626
 Conc: 29.29 ng/ml



#45 AR-1268-5

R.T.: 10.361 min
Delta R.T.: -0.009 min
Response: 59567
Conc: 4.98 ng/ml

Instrument :
ECD_P
ClientSampleId :
LOD-MDL-WATER-01-QT4-2020



#45 AR-1268-5

R.T.: 9.145 min
Delta R.T.: -0.006 min
Response: 18845
Conc: 1.41 ng/ml