

Data Path : Z:\pestpcbsrv\HPCHEM1\ECD_P\Data\PP110420\
 Data File : PP031144.D
 Signal(s) : Signal #1: ECD1A.CH Signal #2: ECD2B.CH
 Acq On : 05 Nov 2020 1:54
 Operator : DD\AJ
 Sample : L4214-07
 Misc : AR1242 LOD 40 PPB
 ALS Vial : 51 Sample Multiplier: 1

Instrument :
 ECD_P
 ClientSampleId :
 LOD-MDL-WATER-01-QT4-2020

Integration File signal 1: autoint1.e
 Integration File signal 2: autoint2.e
 Quant Time: Nov 05 05:13:43 2020
 Quant Method : Z:\pestpcbsrv\HPCHEM1\ECD_P\methods\PP110420.M
 Quant Title : GC EXTRACTABLES
 QLast Update : Wed Nov 04 08:24:38 2020
 Response via : Initial Calibration
 Integrator: ChemStation 6890 Scale Mode: Small noise peaks clipped

Volume Inj. : 2 µl
 Signal #1 Phase : ZB-MR1 Signal #2 Phase: ZB-MR2
 Signal #1 Info : 30Mx0.32mmx 0.50µ Signal #2 Info : 30M x 0.32mm x 0.25µm

Compound	RT#1	RT#2	Resp#1	Resp#2	ng/ml	ng/ml
System Monitoring Compounds						
1) SA Tetrachlo...	4.799	4.074	980989	939123	14.687	14.129
2) SA Decachlor...	10.680	9.395	649277	721868	16.239	17.288
Target Compounds						
3) L1 AR-1016-1	6.105	5.334	52996	44532	27.218	24.003
4) L1 AR-1016-2	6.128	5.355	73884	63174	25.881	23.241
5) L1 AR-1016-3	6.193	5.547	44478	37261	25.537	29.418
6) L1 AR-1016-4	6.298	5.599	35597	25066	24.635	27.180
7) L1 AR-1016-5	6.613	5.828	35209	35037	28.244	26.694
8) L2 AR-1221-1	5.048	4.334	7469	6498	12.369	11.537
9) L2 AR-1221-2	5.145	4.429	19578	18471	43.587	44.521
10) L2 AR-1221-3	5.229	4.522	30907	25726	22.900	19.617
11) L3 AR-1232-1	5.229	4.522	30907	25726	25.271	21.477
12) L3 AR-1232-2	5.812	5.355	39512	63174	65.068	59.446
13) L3 AR-1232-3	6.128	5.547	73884	37261	66.138	72.676
14) L3 AR-1232-4	6.298	5.643	35597	32934	62.721	75.407
15) L3 AR-1232-5	6.400	5.828	20561	35037	59.336	72.556
16) L4 AR-1242-1	6.105	5.334	52996	44532	39.447	34.603
17) L4 AR-1242-2	6.128	5.355	73884	63174	37.831	33.831
18) L4 AR-1242-3	6.193	5.547	44478	37261	36.471	39.688
19) L4 AR-1242-4	6.298	5.643	35597	32934	35.136	37.977
20) L4 AR-1242-5	7.078	6.208	39246	37581	41.126	37.751
21) L5 AR-1248-1	6.105	5.334	52996	44532	54.958	48.127
22) L5 AR-1248-2	6.400	5.599	20561	25066	17.777	22.744 #
23) L5 AR-1248-3	6.613	5.643	35209	32934	24.747	27.211
24) L5 AR-1248-4	7.040	5.828	37138	35037	24.367	23.741
25) L5 AR-1248-5	7.078	6.251	39246	36236	25.869	28.692
26) L6 AR-1254-1	7.009	6.208	33645	37581	23.964	19.109
27) L6 AR-1254-2	7.241	6.370	35347	9450	16.958	5.751 #
28) L6 AR-1254-3	7.618	6.788	42082	13114	18.233	4.789 #
29) L6 AR-1254-4	7.914	7.028	22502	11009	13.744	6.822 #
30) L6 AR-1254-5	0.000	7.458	0	15375	N.D.	7.022 #
31) L7 AR-1260-1	7.788	0.000	3706	0	2.018	N.D. #
32) L7 AR-1260-2	0.000	7.122	0	2875	N.D.	1.228 #
33) L7 AR-1260-3	8.431	7.275	2525	15441	1.534	6.792 #
34) L7 AR-1260-4	0.000	7.758	0	1658	N.D.	0.909 #
35) L7 AR-1260-5	8.957	0.000	5744	0	1.523	N.D. #
36) L8 AR-1262-1	8.431	0.000	2525	0	1.257	N.D. #
37) L8 AR-1262-2	8.957	0.000	5744	0	1.580	N.D. #
38) L8 AR-1262-3	9.270	8.308	4425	3231	1.712	1.905
39) L8 AR-1262-4	9.334f	0.000	5261	0	2.555	N.D. #
40) L8 AR-1262-5	9.953f	0.000	23353	0	16.486	N.D. #
41) L9 AR-1268-1	9.270	8.308	4425	3231	1.013	0.660 #

Data Path : Z:\pestpcbsrv\HPCHEM1\ECD_P\Data\PP110420\
 Data File : PP031144.D
 Signal(s) : Signal #1: ECD1A.CH Signal #2: ECD2B.CH
 Acq On : 05 Nov 2020 1:54
 Operator : DD\AJ
 Sample : L4214-07
 Misc : AR1242 LOD 40 PPB
 ALS Vial : 51 Sample Multiplier: 1

Instrument :
 ECD_P
ClientSampleId :
 LOD-MDL-WATER-01-QT4-2020

Integration File signal 1: autoint1.e
 Integration File signal 2: autoint2.e
 Quant Time: Nov 05 05:13:43 2020
 Quant Method : Z:\pestpcbsrv\HPCHEM1\ECD_P\methods\PP110420.M
 Quant Title : GC EXTRACTABLES
 QLast Update : Wed Nov 04 08:24:38 2020
 Response via : Initial Calibration
 Integrator: ChemStation 6890 Scale Mode: Small noise peaks clipped

Volume Inj. : 2 µl
 Signal #1 Phase : ZB-MR1 Signal #2 Phase: ZB-MR2
 Signal #1 Info : 30Mx0.32mmx 0.50µ Signal #2 Info : 30M x 0.32mm x 0.25µm

	Compound	RT#1	RT#2	Resp#1	Resp#2	ng/ml	ng/ml
42)	L9 AR-1268-2	9.334f	0.000	5261	0	1.223	N.D. #
43)	L9 AR-1268-3	9.569	8.568	14458	2319	3.998	0.580 #
44)	L9 AR-1268-4	9.953f	0.000	23353	0	14.744	N.D. #
45)	L9 AR-1268-5	10.367	9.146	21423	8122	1.791	0.606 #

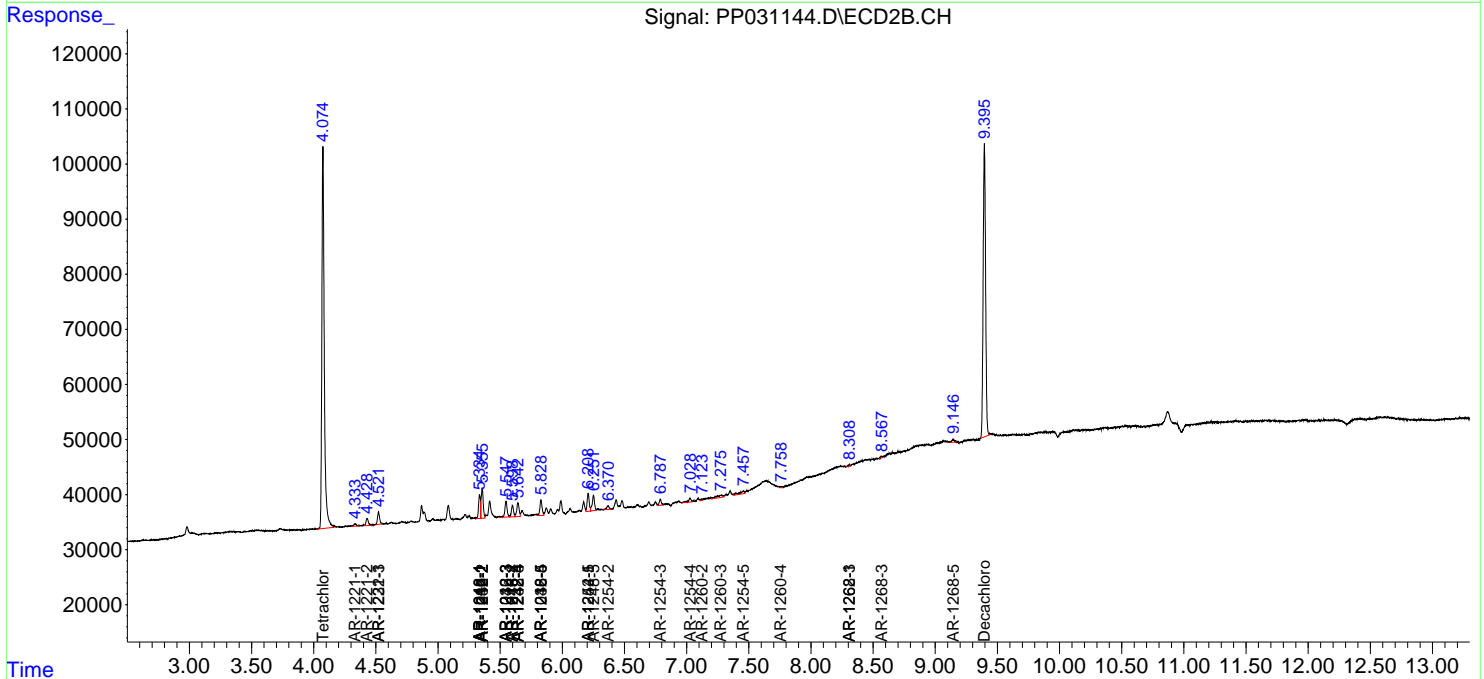
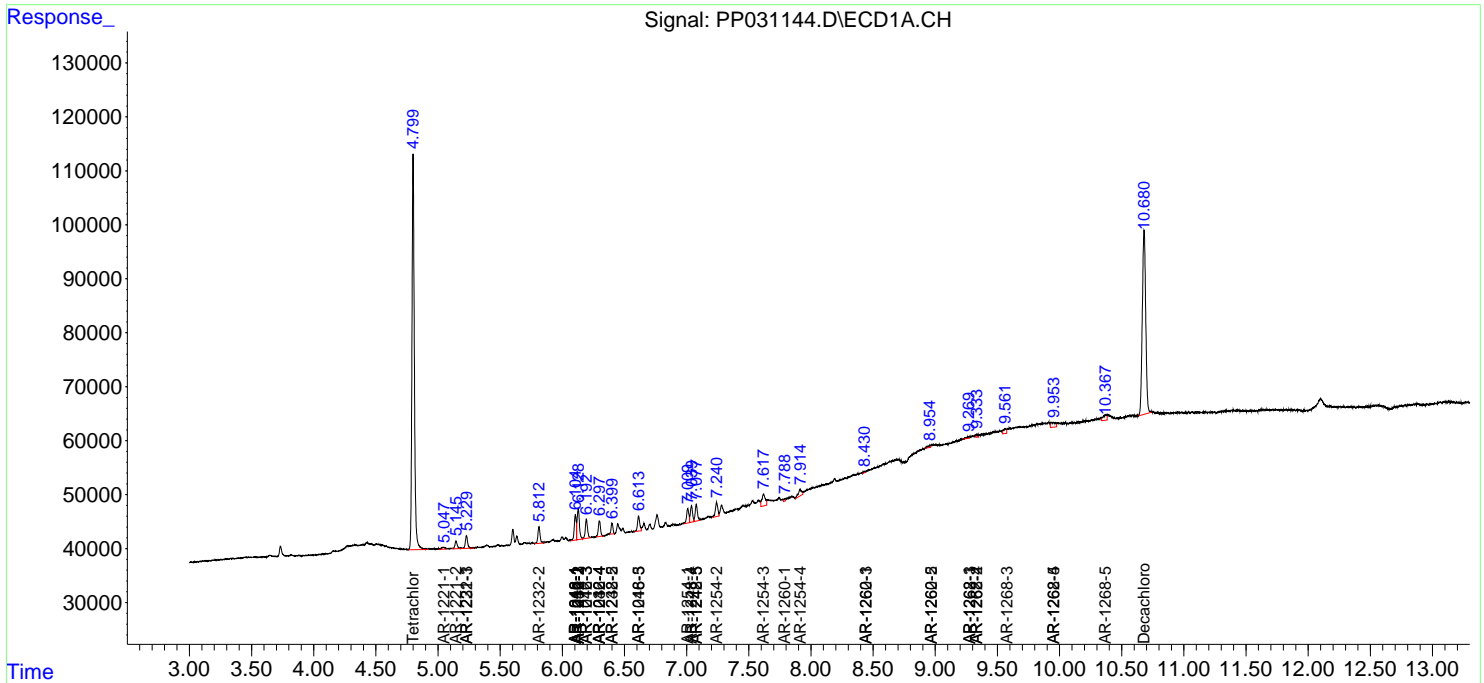
(f)=RT Delta > 1/2 Window (#)=Amounts differ by > 25% (m)=manual int.

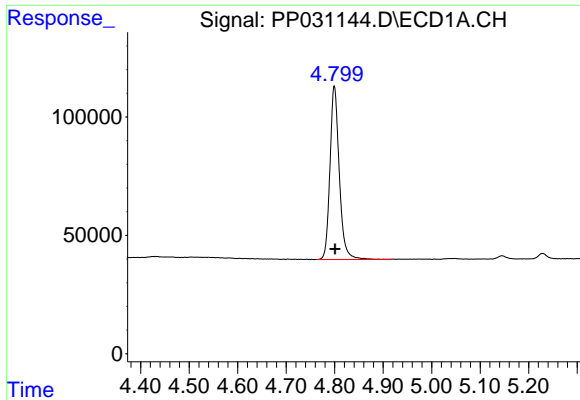
Data Path : Z:\pestpcbsrv\HPCHEM1\ECD_P\Data\PP110420\
 Data File : PP031144.D
 Signal(s) : Signal #1: ECD1A.CH Signal #2: ECD2B.CH
 Acq On : 05 Nov 2020 1:54
 Operator : DD\AJ
 Sample : L4214-07
 Misc : AR1242 LOD 40 PPB
 ALS Vial : 51 Sample Multiplier: 1

Instrument :
 ECD_P
Client Sampled :
 LOD-MDL-WATER-01-QT4-2020

Integration File signal 1: autoint1.e
 Integration File signal 2: autoint2.e
 Quant Time: Nov 05 05:13:43 2020
 Quant Method : Z:\pestpcbsrv\HPCHEM1\ECD_P\methods\PP110420.M
 Quant Title : GC EXTRACTABLES
 QLast Update : Wed Nov 04 08:24:38 2020
 Response via : Initial Calibration
 Integrator: ChemStation 6890 Scale Mode: Small noise peaks clipped

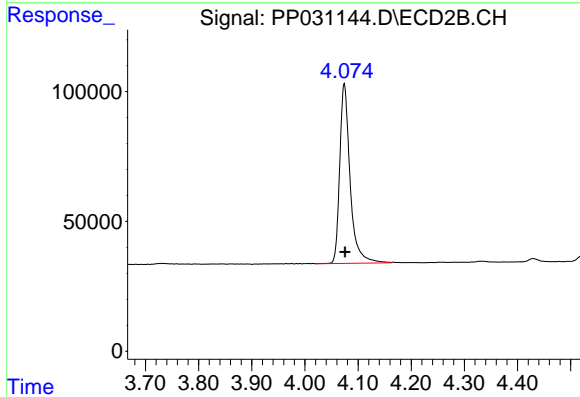
Volume Inj. : 2 µl
 Signal #1 Phase : ZB-MR1 Signal #2 Phase: ZB-MR2
 Signal #1 Info : 30Mx0.32mmx 0.50µ Signal #2 Info : 30M x 0.32mm x 0.25µm



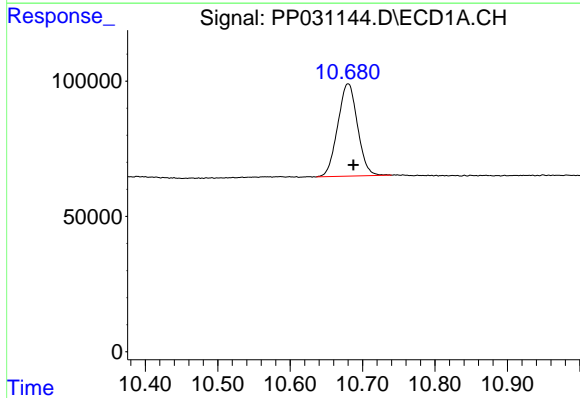


#1 Tetrachloro-m-xylene
 R.T.: 4.799 min
 Delta R.T.: -0.002 min
 Response: 980989
 Conc: 14.69 ng/ml

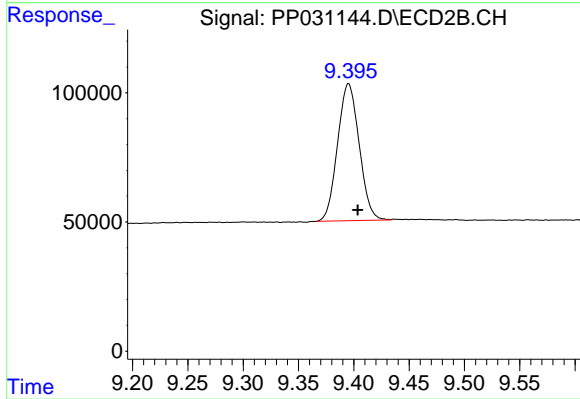
Instrument :
 ECD_P
 ClientSampleId :
 LOD-MDL-WATER-01-QT4-2020



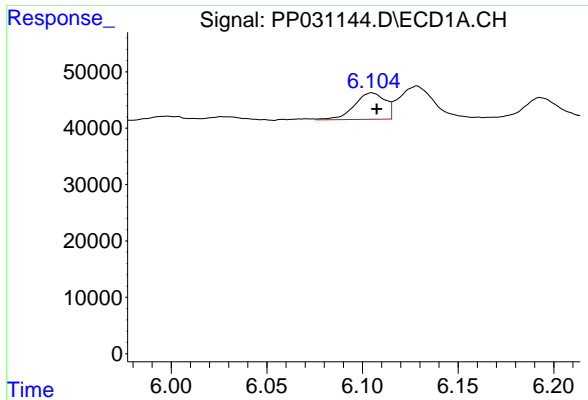
#1 Tetrachloro-m-xylene
 R.T.: 4.074 min
 Delta R.T.: -0.001 min
 Response: 939123
 Conc: 14.13 ng/ml



#2 Decachlorobiphenyl
 R.T.: 10.680 min
 Delta R.T.: -0.007 min
 Response: 649277
 Conc: 16.24 ng/ml

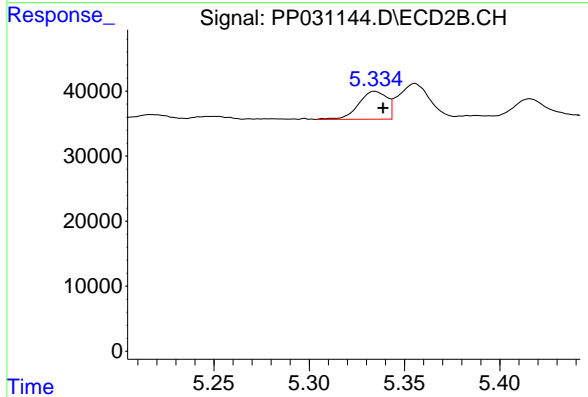


#2 Decachlorobiphenyl
 R.T.: 9.395 min
 Delta R.T.: -0.008 min
 Response: 721868
 Conc: 17.29 ng/ml

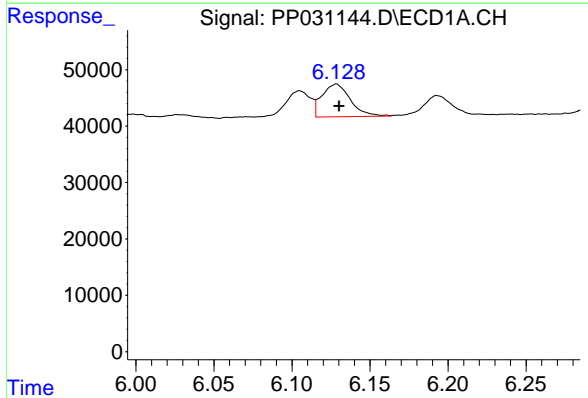


#3 AR-1016-1
 R.T.: 6.105 min
 Delta R.T.: -0.003 min
 Response: 52996
 Conc: 27.22 ng/ml

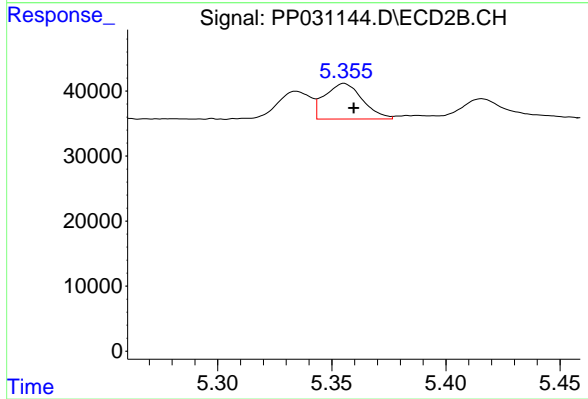
Instrument :
 ECD_P
ClientSampleId :
 LOD-MDL-WATER-01-QT4-2020



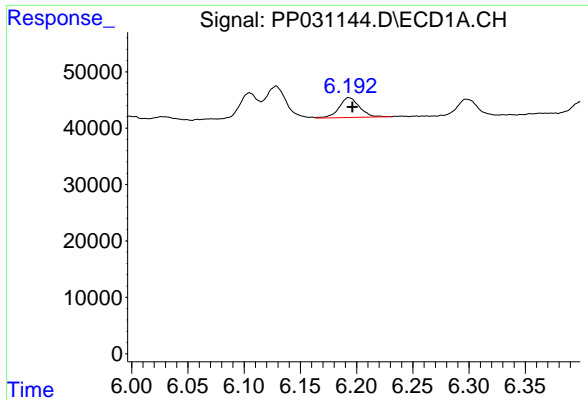
#3 AR-1016-1
 R.T.: 5.334 min
 Delta R.T.: -0.005 min
 Response: 44532
 Conc: 24.00 ng/ml



#4 AR-1016-2
 R.T.: 6.128 min
 Delta R.T.: -0.002 min
 Response: 73884
 Conc: 25.88 ng/ml

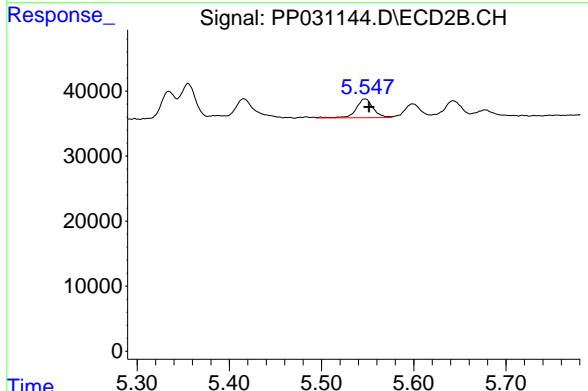


#4 AR-1016-2
 R.T.: 5.355 min
 Delta R.T.: -0.004 min
 Response: 63174
 Conc: 23.24 ng/ml

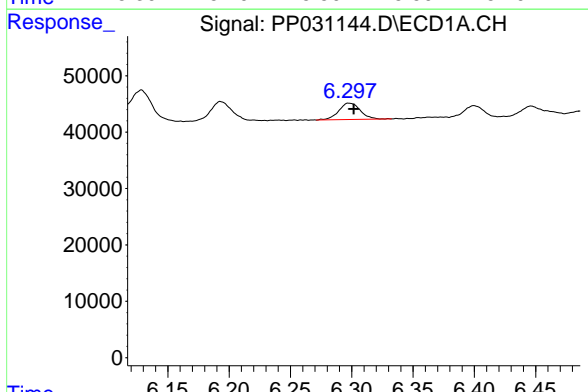


#5 AR-1016-3
 R.T.: 6.193 min
 Delta R.T.: -0.003 min
 Response: 44478
 Conc: 25.54 ng/ml

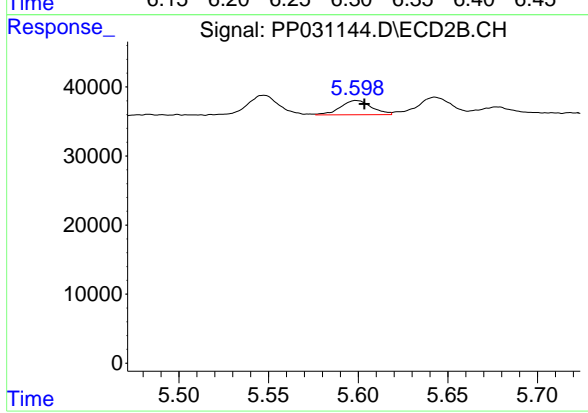
Instrument :
 ECD_P
ClientSampleId :
 LOD-MDL-WATER-01-QT4-2020



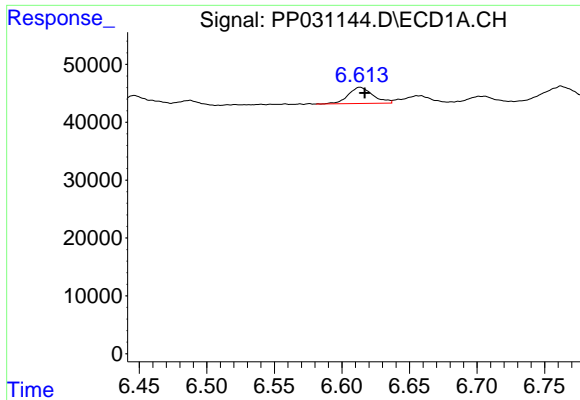
#5 AR-1016-3
 R.T.: 5.547 min
 Delta R.T.: -0.004 min
 Response: 37261
 Conc: 29.42 ng/ml



#6 AR-1016-4
 R.T.: 6.298 min
 Delta R.T.: -0.004 min
 Response: 35597
 Conc: 24.64 ng/ml



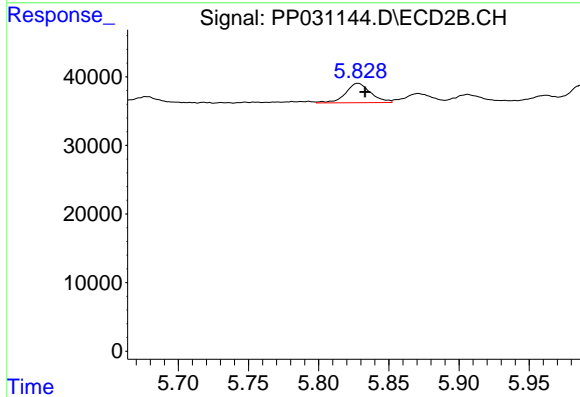
#6 AR-1016-4
 R.T.: 5.599 min
 Delta R.T.: -0.005 min
 Response: 25066
 Conc: 27.18 ng/ml



#7 AR-1016-5

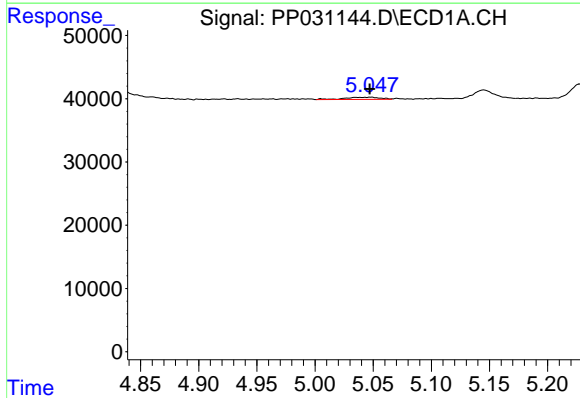
R.T.: 6.613 min
 Delta R.T.: -0.003 min
 Response: 35209
 Conc: 28.24 ng/ml

Instrument :
 ECD_P
 ClientSampleId :
 LOD-MDL-WATER-01-QT4-2020



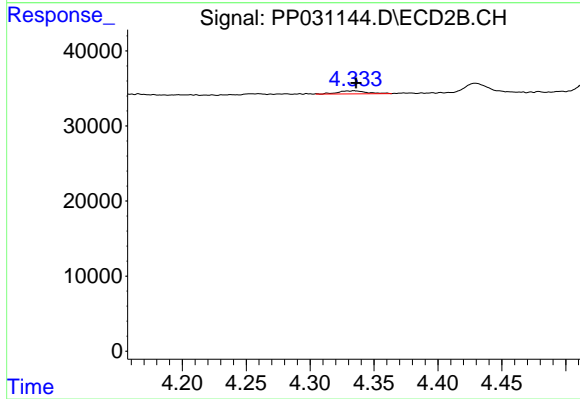
#7 AR-1016-5

R.T.: 5.828 min
 Delta R.T.: -0.005 min
 Response: 35037
 Conc: 26.69 ng/ml



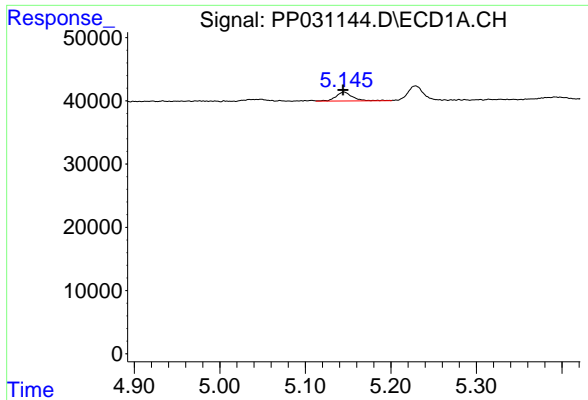
#8 AR-1221-1

R.T.: 5.048 min
 Delta R.T.: 0.000 min
 Response: 7469
 Conc: 12.37 ng/ml



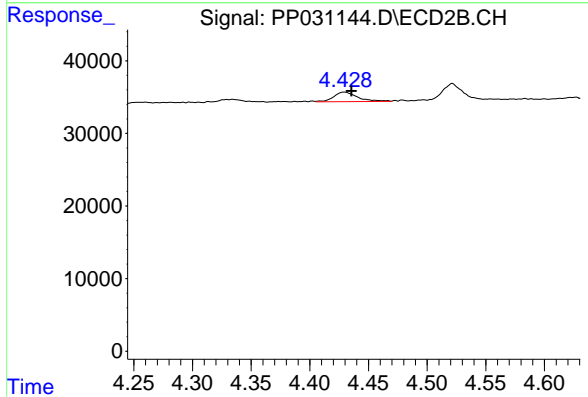
#8 AR-1221-1

R.T.: 4.334 min
 Delta R.T.: -0.002 min
 Response: 6498
 Conc: 11.54 ng/ml

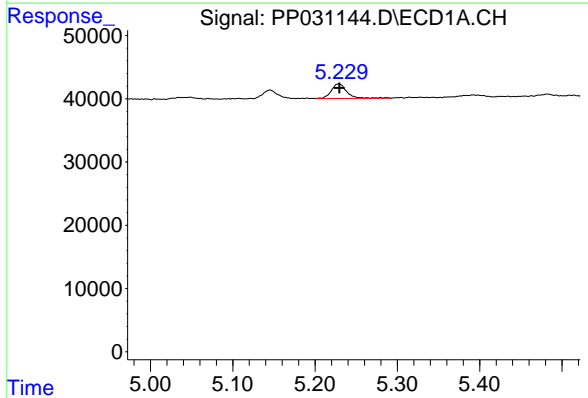


#9 AR-1221-2
 R.T.: 5.145 min
 Delta R.T.: 0.000 min
 Response: 19578
 Conc: 43.59 ng/ml

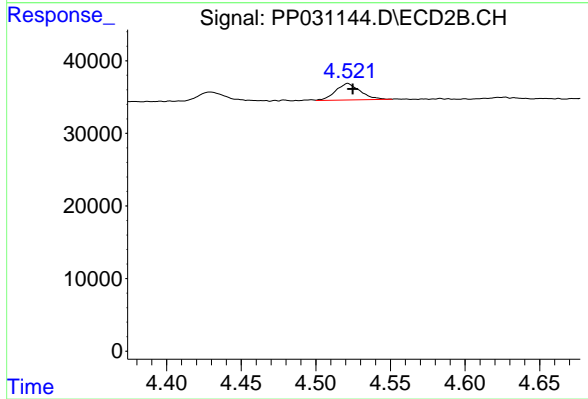
Instrument :
 ECD_P
ClientSampleId :
 LOD-MDL-WATER-01-QT4-2020



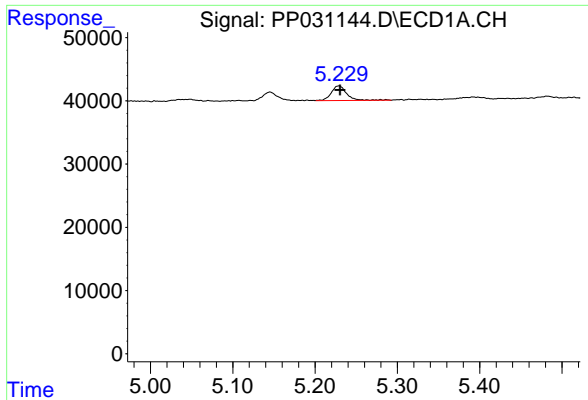
#9 AR-1221-2
 R.T.: 4.429 min
 Delta R.T.: -0.006 min
 Response: 18471
 Conc: 44.52 ng/ml



#10 AR-1221-3
 R.T.: 5.229 min
 Delta R.T.: 0.000 min
 Response: 30907
 Conc: 22.90 ng/ml

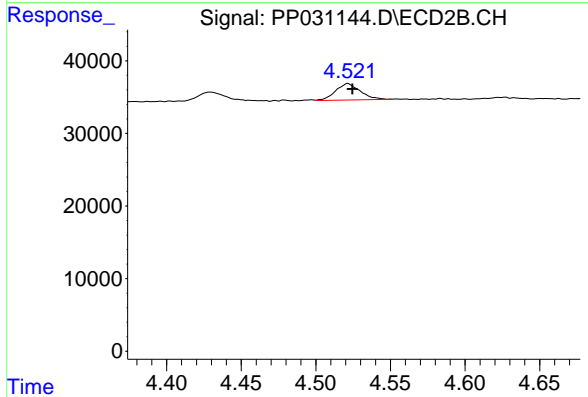


#10 AR-1221-3
 R.T.: 4.522 min
 Delta R.T.: -0.003 min
 Response: 25726
 Conc: 19.62 ng/ml

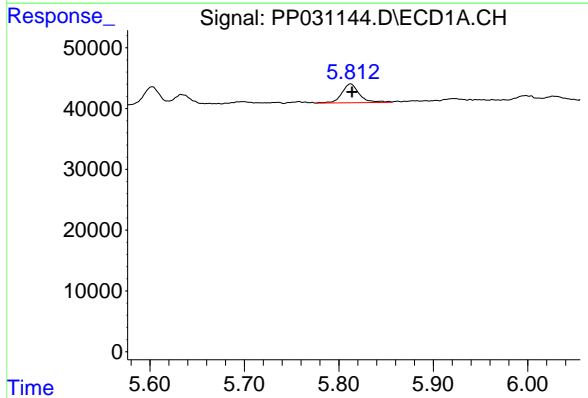


#11 AR-1232-1
 R.T.: 5.229 min
 Delta R.T.: -0.001 min
 Response: 30907
 Conc: 25.27 ng/ml

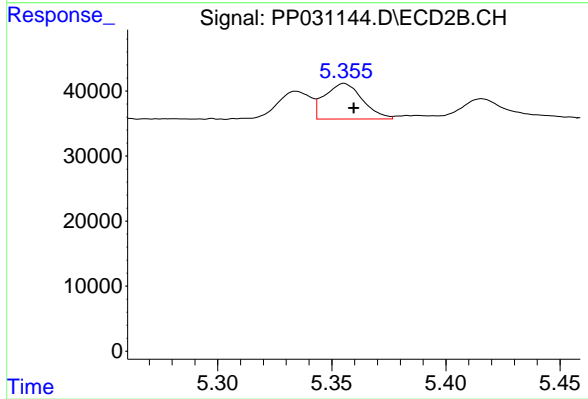
Instrument :
 ECD_P
ClientSampleId :
 LOD-MDL-WATER-01-QT4-2020



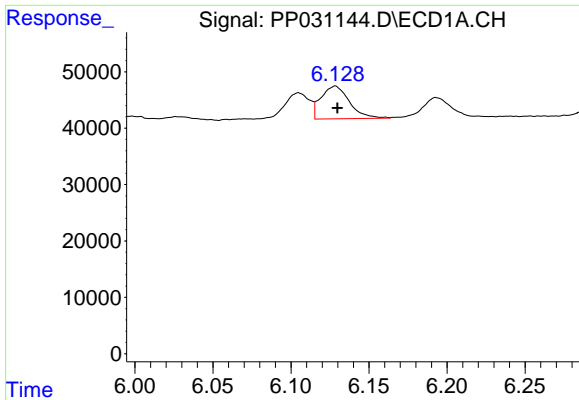
#11 AR-1232-1
 R.T.: 4.522 min
 Delta R.T.: -0.003 min
 Response: 25726
 Conc: 21.48 ng/ml



#12 AR-1232-2
 R.T.: 5.812 min
 Delta R.T.: -0.002 min
 Response: 39512
 Conc: 65.07 ng/ml



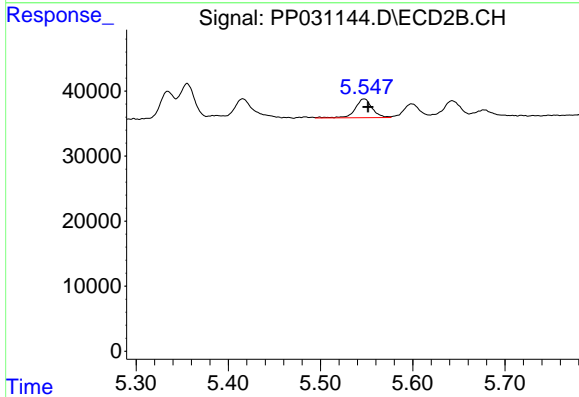
#12 AR-1232-2
 R.T.: 5.355 min
 Delta R.T.: -0.004 min
 Response: 63174
 Conc: 59.45 ng/ml



#13 AR-1232-3

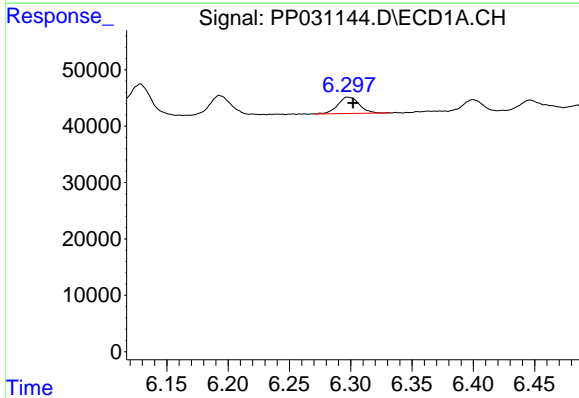
R.T.: 6.128 min
 Delta R.T.: -0.001 min
 Response: 73884
 Conc: 66.14 ng/ml

Instrument :
 ECD_P
 ClientSampleId :
 LOD-MDL-WATER-01-QT4-2020



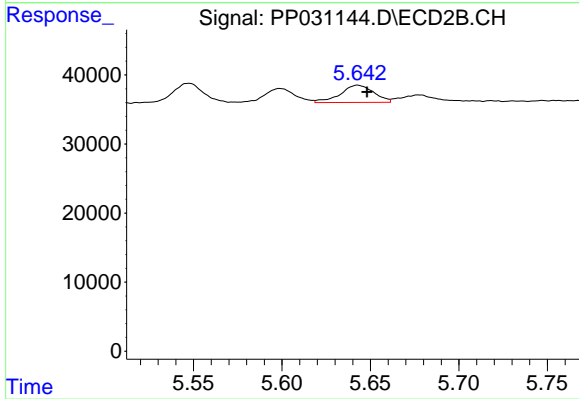
#13 AR-1232-3

R.T.: 5.547 min
 Delta R.T.: -0.004 min
 Response: 37261
 Conc: 72.68 ng/ml



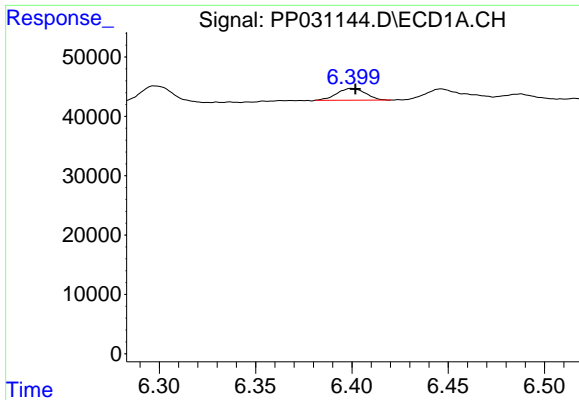
#14 AR-1232-4

R.T.: 6.298 min
 Delta R.T.: -0.004 min
 Response: 35597
 Conc: 62.72 ng/ml



#14 AR-1232-4

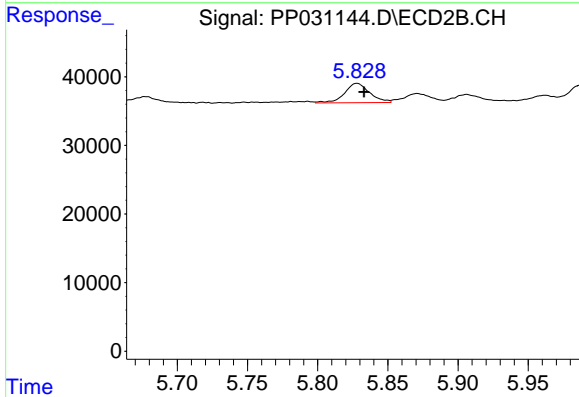
R.T.: 5.643 min
 Delta R.T.: -0.005 min
 Response: 32934
 Conc: 75.41 ng/ml



#15 AR-1232-5

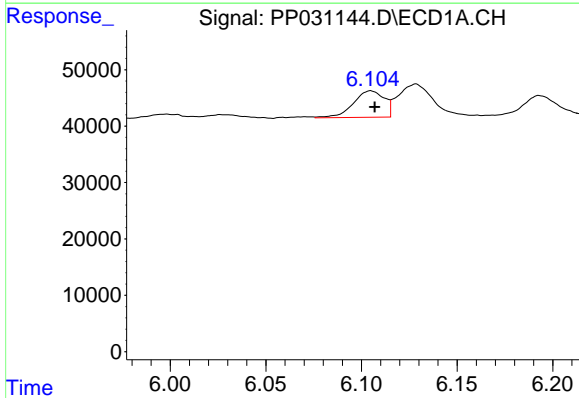
R.T.: 6.400 min
 Delta R.T.: -0.002 min
 Response: 20561
 Conc: 59.34 ng/ml

Instrument :
 ECD_P
ClientSampleId :
 LOD-MDL-WATER-01-QT4-2020



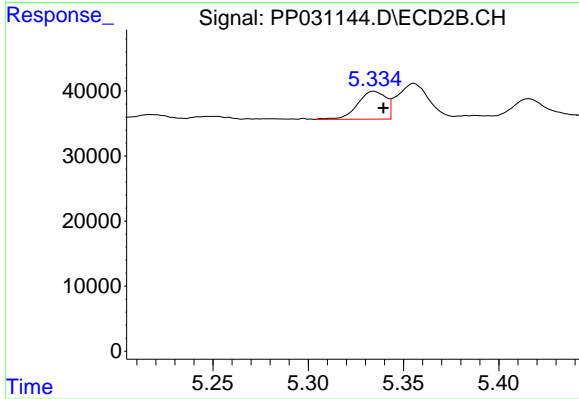
#15 AR-1232-5

R.T.: 5.828 min
 Delta R.T.: -0.005 min
 Response: 35037
 Conc: 72.56 ng/ml



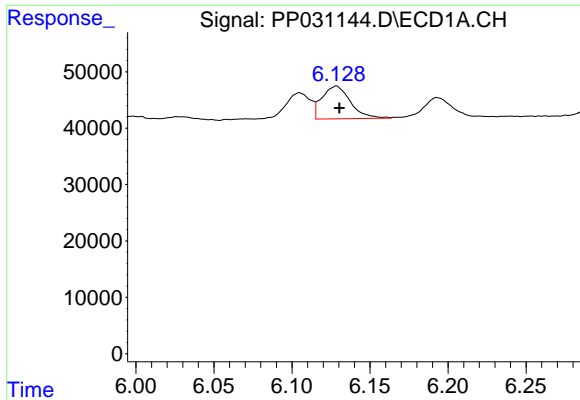
#16 AR-1242-1

R.T.: 6.105 min
 Delta R.T.: -0.002 min
 Response: 52996
 Conc: 39.45 ng/ml



#16 AR-1242-1

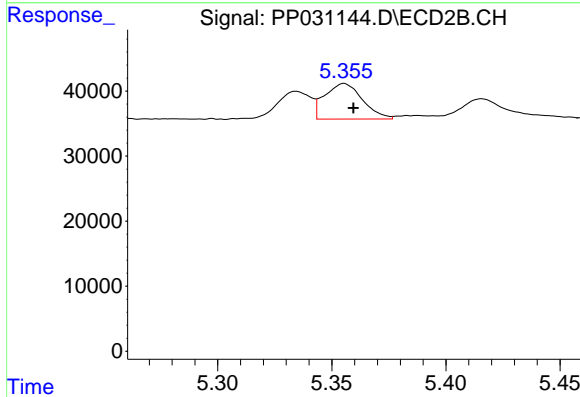
R.T.: 5.334 min
 Delta R.T.: -0.005 min
 Response: 44532
 Conc: 34.60 ng/ml



#17 AR-1242-2

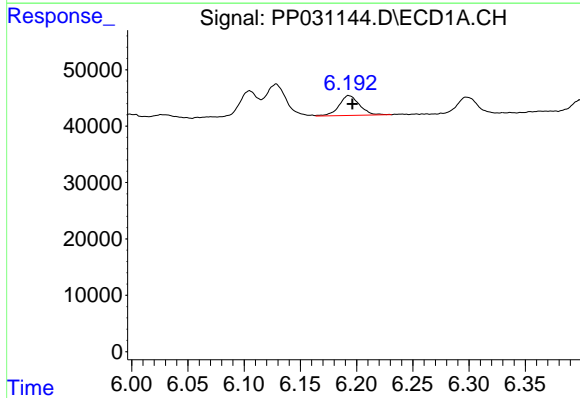
R.T.: 6.128 min
 Delta R.T.: -0.002 min
 Response: 73884
 Conc: 37.83 ng/ml

Instrument :
 ECD_P
 ClientSampleId :
 LOD-MDL-WATER-01-QT4-2020



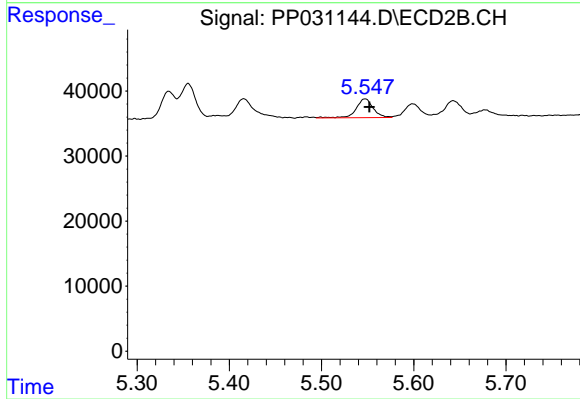
#17 AR-1242-2

R.T.: 5.355 min
 Delta R.T.: -0.004 min
 Response: 63174
 Conc: 33.83 ng/ml



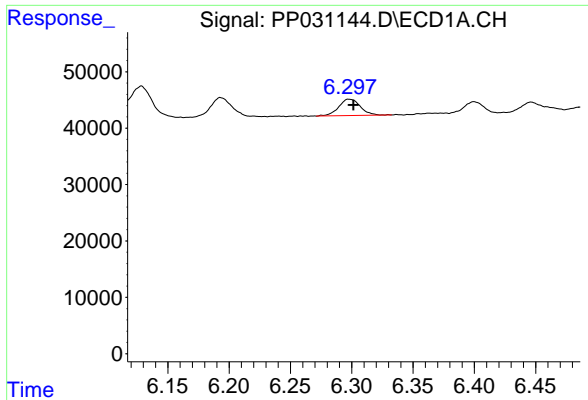
#18 AR-1242-3

R.T.: 6.193 min
 Delta R.T.: -0.003 min
 Response: 44478
 Conc: 36.47 ng/ml



#18 AR-1242-3

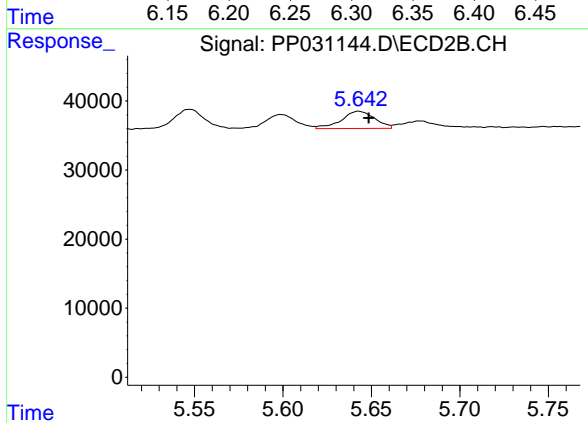
R.T.: 5.547 min
 Delta R.T.: -0.004 min
 Response: 37261
 Conc: 39.69 ng/ml



#19 AR-1242-4

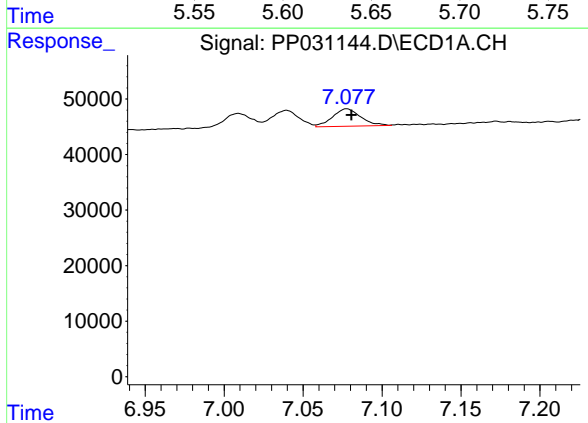
R.T.: 6.298 min
 Delta R.T.: -0.004 min
 Response: 35597
 Conc: 35.14 ng/ml

Instrument :
 ECD_P
ClientSampleId :
 LOD-MDL-WATER-01-QT4-2020



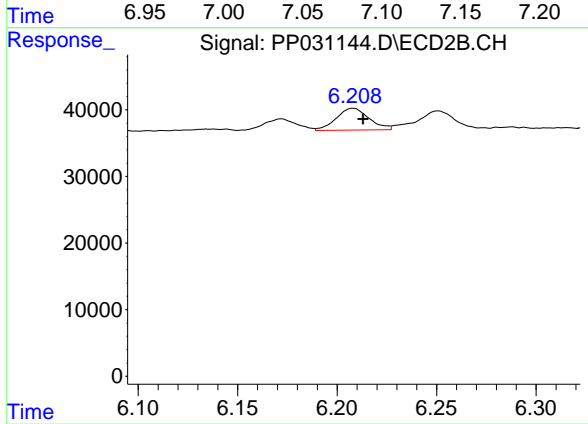
#19 AR-1242-4

R.T.: 5.643 min
 Delta R.T.: -0.006 min
 Response: 32934
 Conc: 37.98 ng/ml



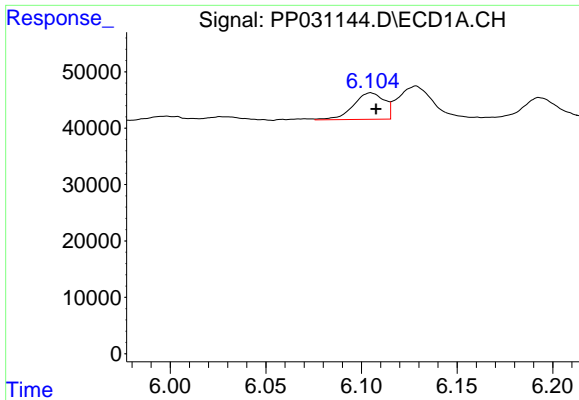
#20 AR-1242-5

R.T.: 7.078 min
 Delta R.T.: -0.003 min
 Response: 39246
 Conc: 41.13 ng/ml



#20 AR-1242-5

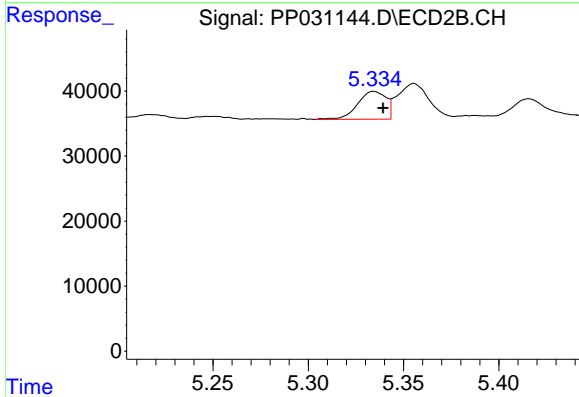
R.T.: 6.208 min
 Delta R.T.: -0.005 min
 Response: 37581
 Conc: 37.75 ng/ml



#21 AR-1248-1

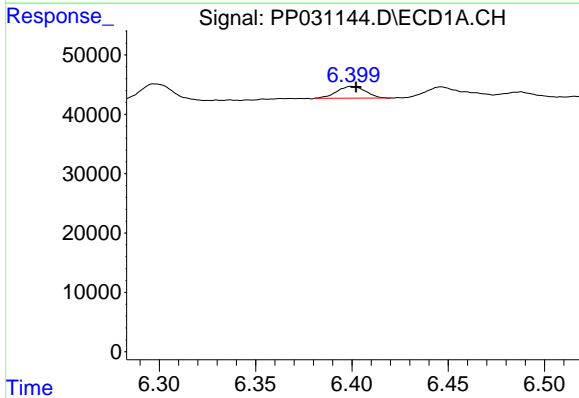
R.T.: 6.105 min
 Delta R.T.: -0.003 min
 Response: 52996
 Conc: 54.96 ng/ml

Instrument :
 ECD_P
ClientSampleId :
 LOD-MDL-WATER-01-QT4-2020



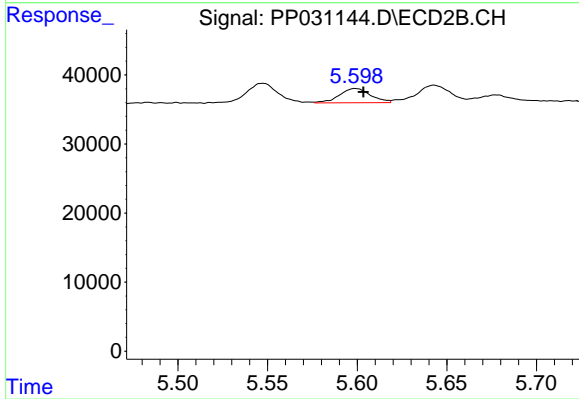
#21 AR-1248-1

R.T.: 5.334 min
 Delta R.T.: -0.005 min
 Response: 44532
 Conc: 48.13 ng/ml



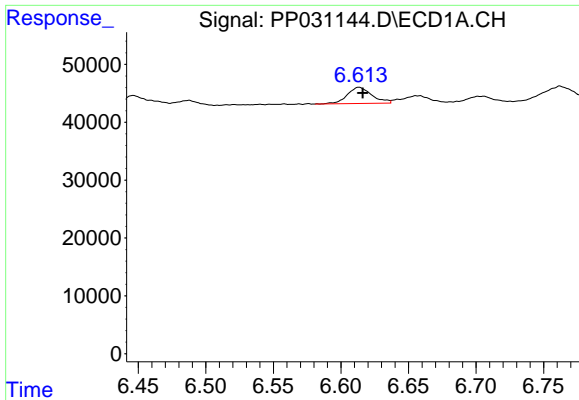
#22 AR-1248-2

R.T.: 6.400 min
 Delta R.T.: -0.002 min
 Response: 20561
 Conc: 17.78 ng/ml



#22 AR-1248-2

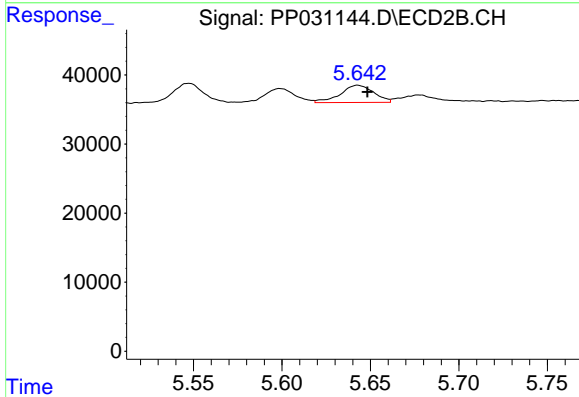
R.T.: 5.599 min
 Delta R.T.: -0.005 min
 Response: 25066
 Conc: 22.74 ng/ml



#23 AR-1248-3

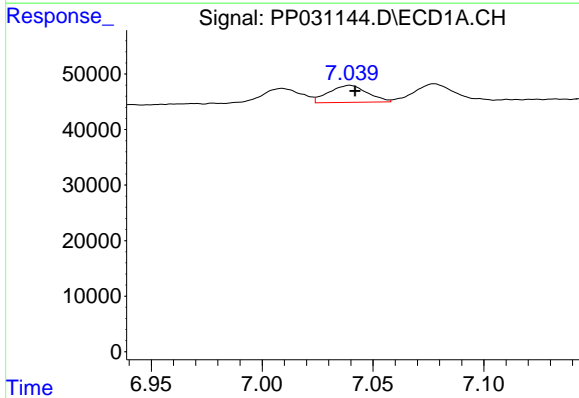
R.T.: 6.613 min
 Delta R.T.: -0.003 min
 Response: 35209
 Conc: 24.75 ng/ml

Instrument :
 ECD_P
ClientSampleId :
 LOD-MDL-WATER-01-QT4-2020



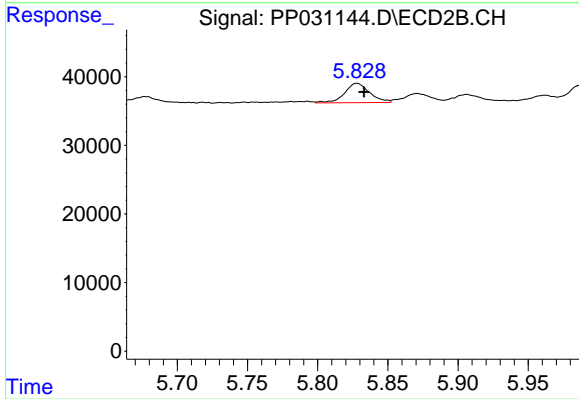
#23 AR-1248-3

R.T.: 5.643 min
 Delta R.T.: -0.005 min
 Response: 32934
 Conc: 27.21 ng/ml



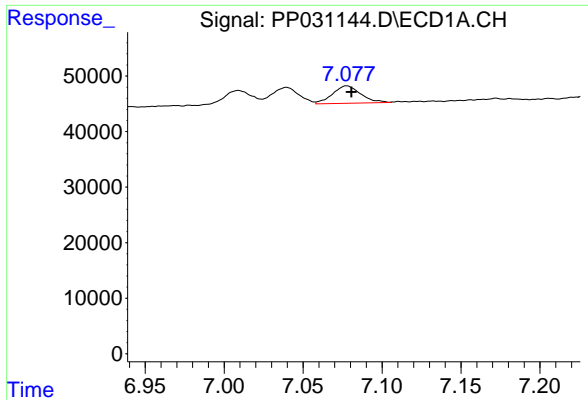
#24 AR-1248-4

R.T.: 7.040 min
 Delta R.T.: -0.002 min
 Response: 37138
 Conc: 24.37 ng/ml



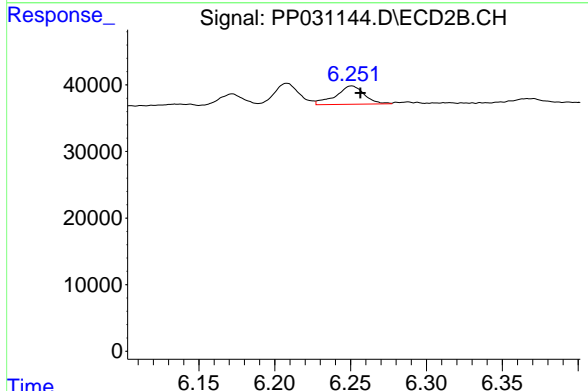
#24 AR-1248-4

R.T.: 5.828 min
 Delta R.T.: -0.005 min
 Response: 35037
 Conc: 23.74 ng/ml

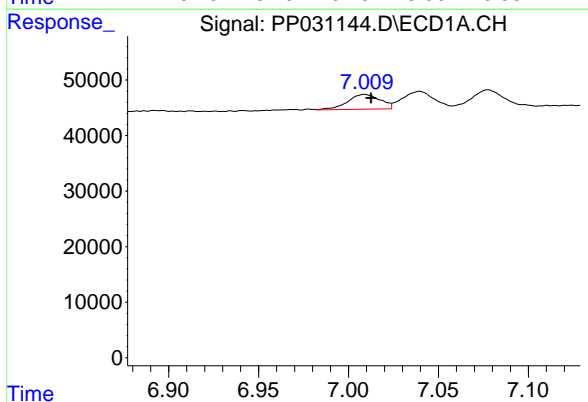


#25 AR-1248-5
 R.T.: 7.078 min
 Delta R.T.: -0.003 min
 Response: 39246
 Conc: 25.87 ng/ml

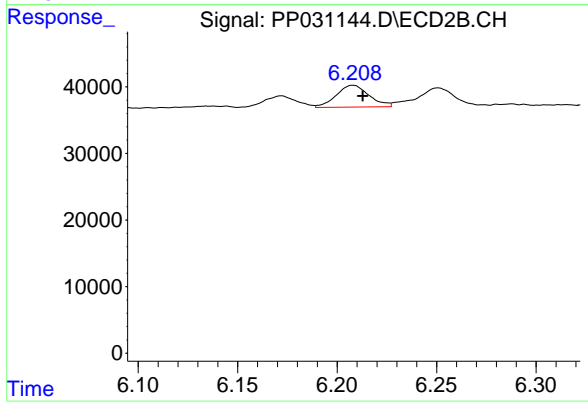
Instrument :
 ECD_P
ClientSampleId :
 LOD-MDL-WATER-01-QT4-2020



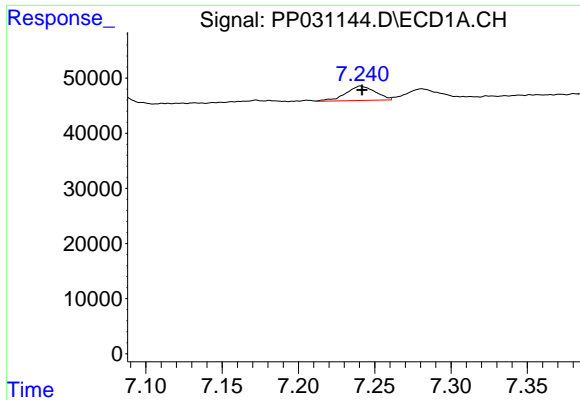
#25 AR-1248-5
 R.T.: 6.251 min
 Delta R.T.: -0.006 min
 Response: 36236
 Conc: 28.69 ng/ml



#26 AR-1254-1
 R.T.: 7.009 min
 Delta R.T.: -0.004 min
 Response: 33645
 Conc: 23.96 ng/ml



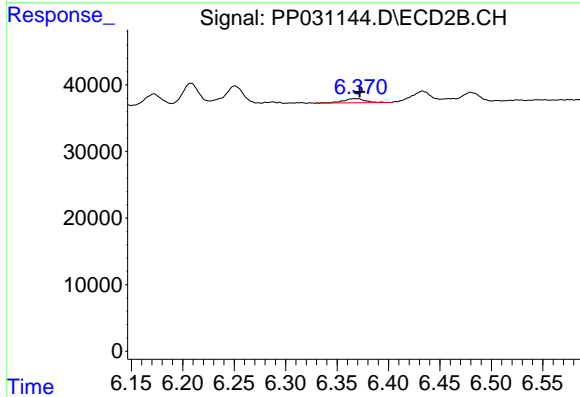
#26 AR-1254-1
 R.T.: 6.208 min
 Delta R.T.: -0.005 min
 Response: 37581
 Conc: 19.11 ng/ml



#27 AR-1254-2

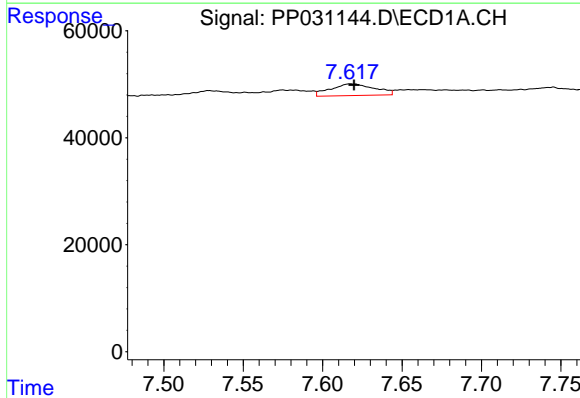
R.T.: 7.241 min
 Delta R.T.: 0.000 min
 Response: 35347
 Conc: 16.96 ng/ml

Instrument :
 ECD_P
ClientSampleId :
 LOD-MDL-WATER-01-QT4-2020



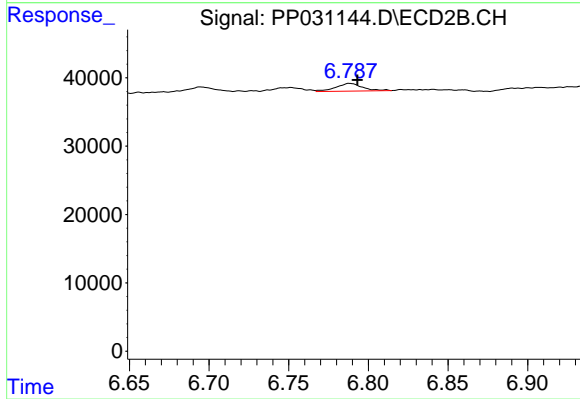
#27 AR-1254-2

R.T.: 6.370 min
 Delta R.T.: -0.002 min
 Response: 9450
 Conc: 5.75 ng/ml



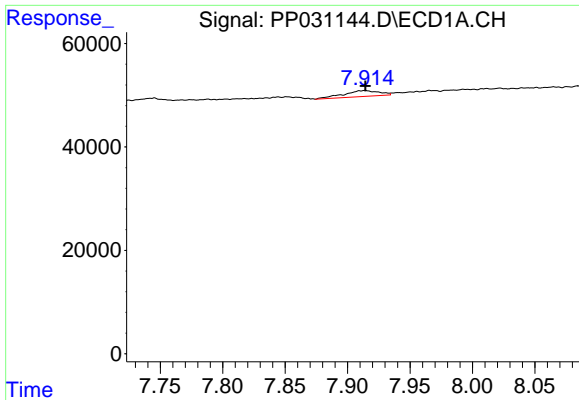
#28 AR-1254-3

R.T.: 7.618 min
 Delta R.T.: -0.001 min
 Response: 42082
 Conc: 18.23 ng/ml



#28 AR-1254-3

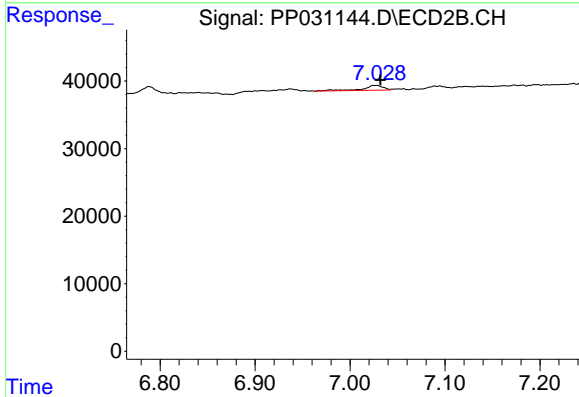
R.T.: 6.788 min
 Delta R.T.: -0.005 min
 Response: 13114
 Conc: 4.79 ng/ml



#29 AR-1254-4

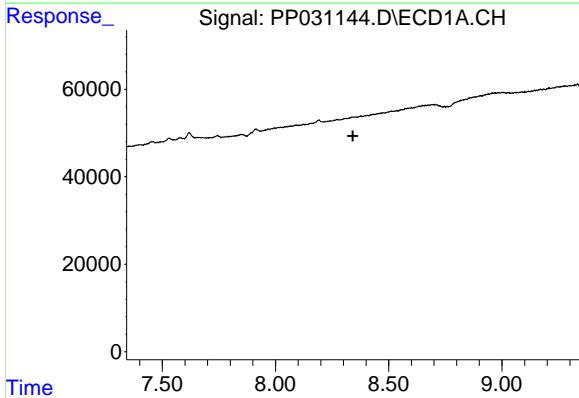
R.T.: 7.914 min
 Delta R.T.: 0.000 min
 Response: 22502
 Conc: 13.74 ng/ml

Instrument :
 ECD_P
ClientSampleId :
 LOD-MDL-WATER-01-QT4-2020



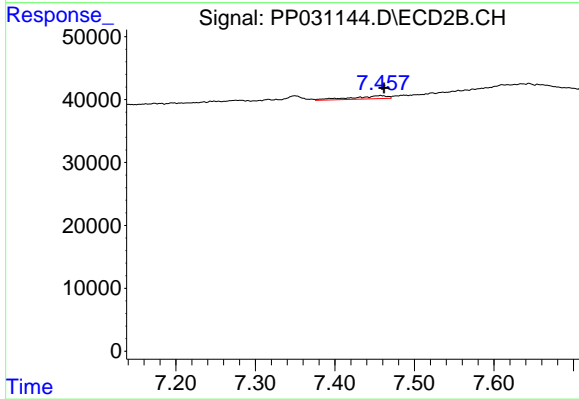
#29 AR-1254-4

R.T.: 7.028 min
 Delta R.T.: -0.004 min
 Response: 11009
 Conc: 6.82 ng/ml



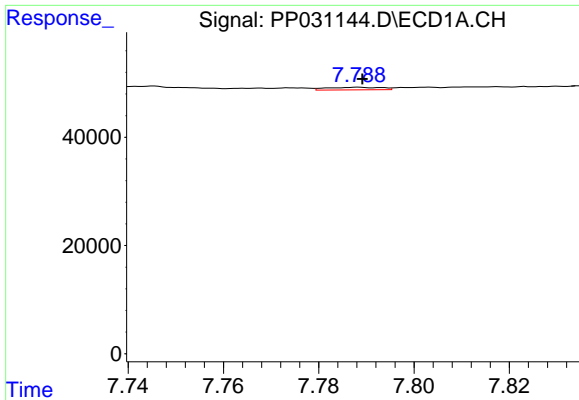
#30 AR-1254-5

R.T.: 0.000 min
 Exp R.T. : 8.341 min
 Response: 0
 Conc: N.D.



#30 AR-1254-5

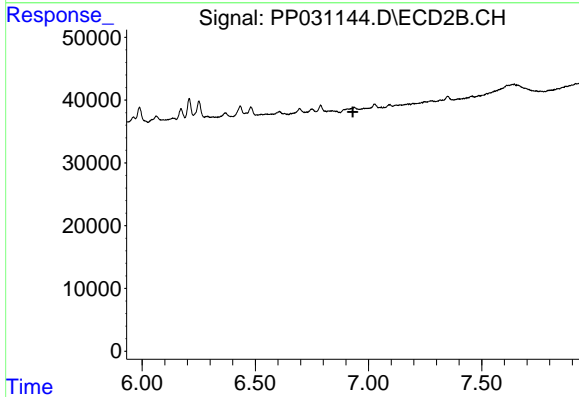
R.T.: 7.458 min
 Delta R.T.: -0.004 min
 Response: 15375
 Conc: 7.02 ng/ml



#31 AR-1260-1

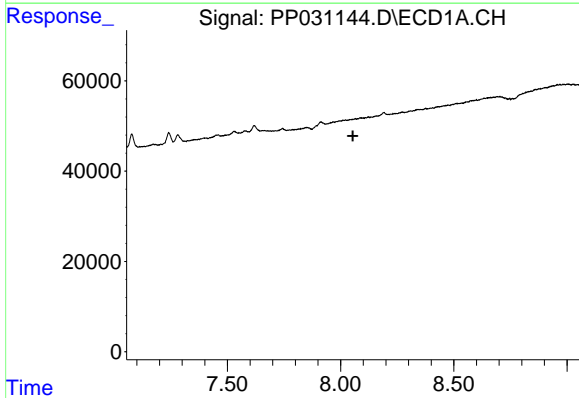
R.T.: 7.788 min
 Delta R.T.: -0.001 min
 Response: 3706
 Conc: 2.02 ng/ml

Instrument :
 ECD_P
ClientSampled :
 LOD-MDL-WATER-01-QT4-2020



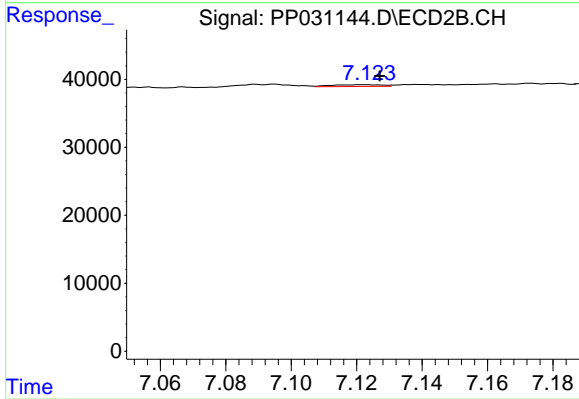
#31 AR-1260-1

R.T.: 0.000 min
 Exp R.T. : 6.931 min
 Response: 0
 Conc: N.D.



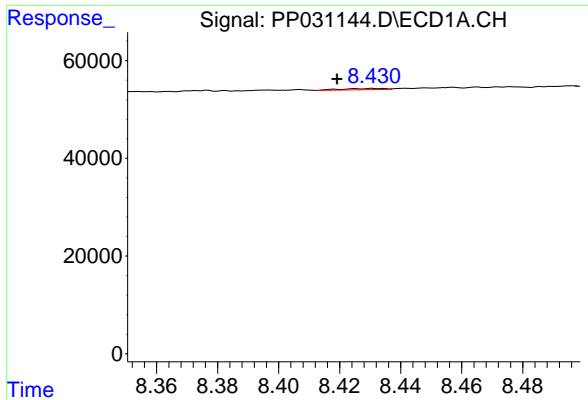
#32 AR-1260-2

R.T.: 0.000 min
 Exp R.T. : 8.054 min
 Response: 0
 Conc: N.D.



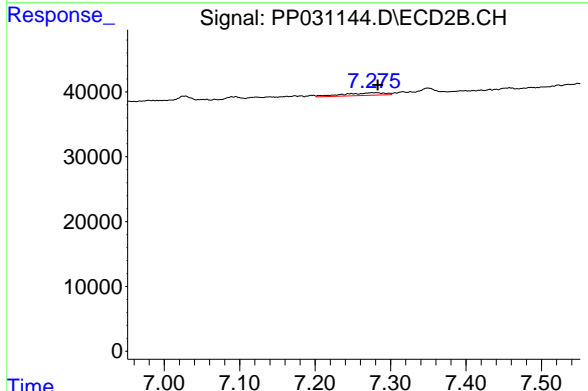
#32 AR-1260-2

R.T.: 7.122 min
 Delta R.T.: -0.005 min
 Response: 2875
 Conc: 1.23 ng/ml

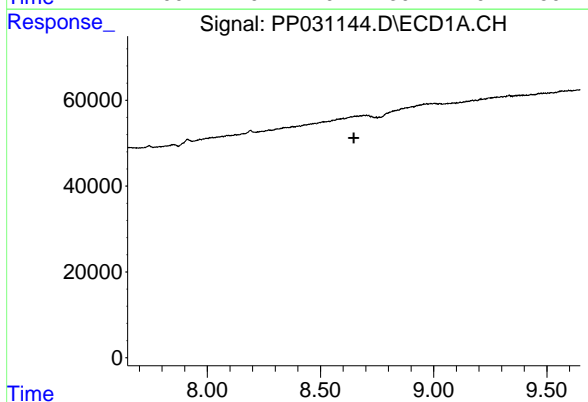


#33 AR-1260-3
 R.T.: 8.431 min
 Delta R.T.: 0.012 min
 Response: 2525
 Conc: 1.53 ng/ml

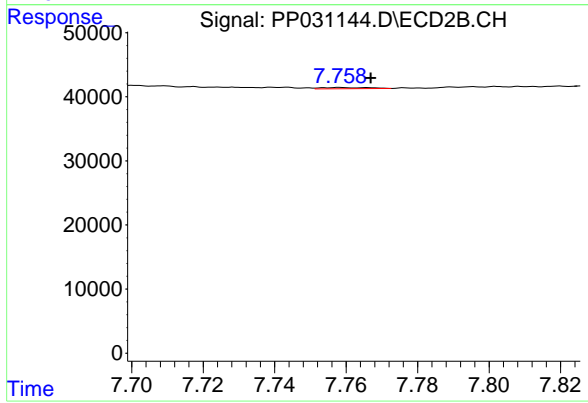
Instrument :
 ECD_P
 ClientSampleId :
 LOD-MDL-WATER-01-QT4-2020



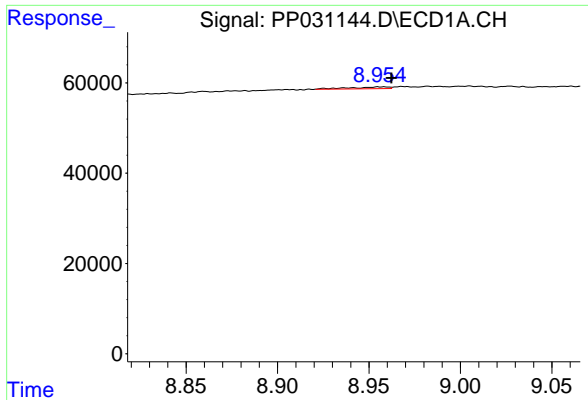
#33 AR-1260-3
 R.T.: 7.275 min
 Delta R.T.: -0.008 min
 Response: 15441
 Conc: 6.79 ng/ml



#34 AR-1260-4
 R.T.: 0.000 min
 Exp R.T. : 8.648 min
 Response: 0
 Conc: N.D.

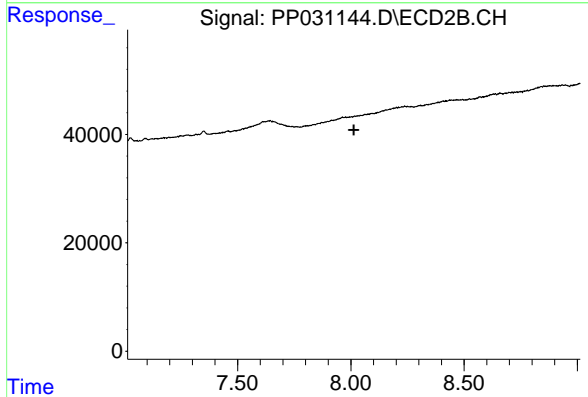


#34 AR-1260-4
 R.T.: 7.758 min
 Delta R.T.: -0.009 min
 Response: 1658
 Conc: 0.91 ng/ml

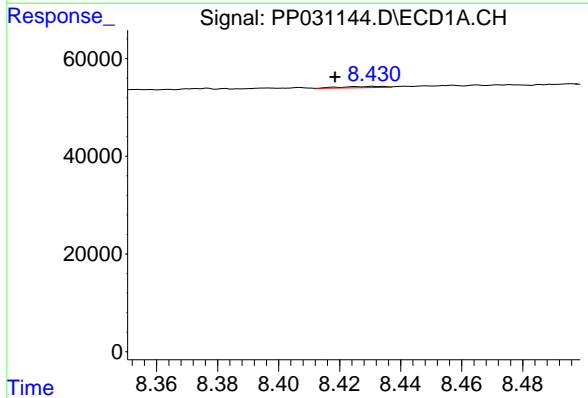


#35 AR-1260-5
 R.T.: 8.957 min
 Delta R.T.: -0.005 min
 Response: 5744
 Conc: 1.52 ng/ml

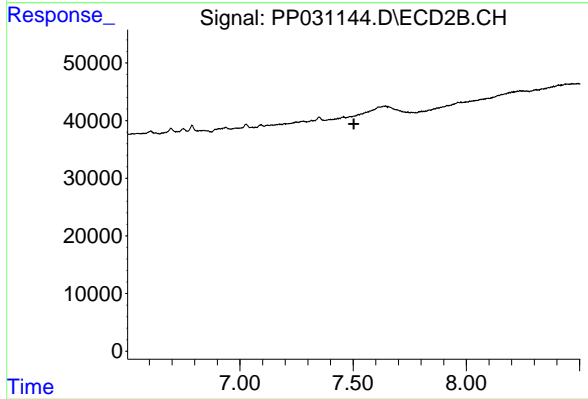
Instrument :
 ECD_P
 ClientSampleId :
 LOD-MDL-WATER-01-QT4-2020



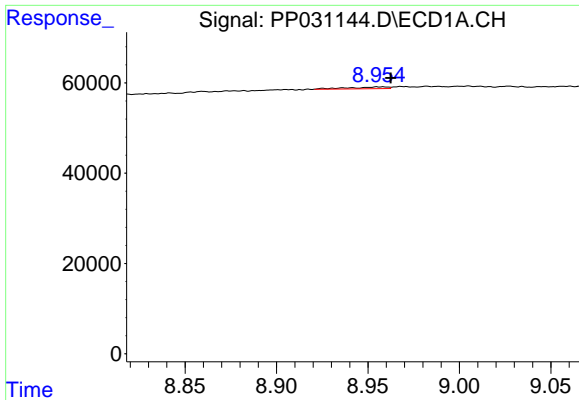
#35 AR-1260-5
 R.T.: 0.000 min
 Exp R.T. : 8.013 min
 Response: 0
 Conc: N.D.



#36 AR-1262-1
 R.T.: 8.431 min
 Delta R.T.: 0.013 min
 Response: 2525
 Conc: 1.26 ng/ml



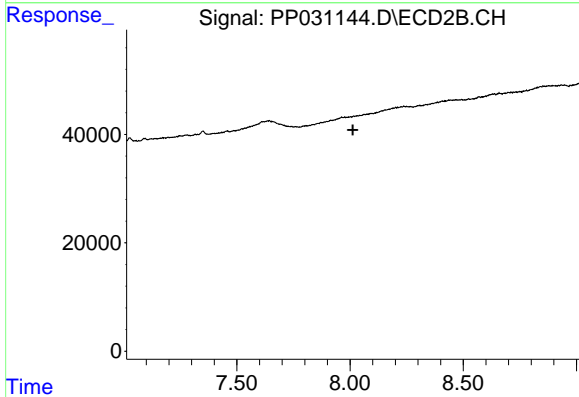
#36 AR-1262-1
 R.T.: 0.000 min
 Exp R.T. : 7.503 min
 Response: 0
 Conc: N.D.



#37 AR-1262-2

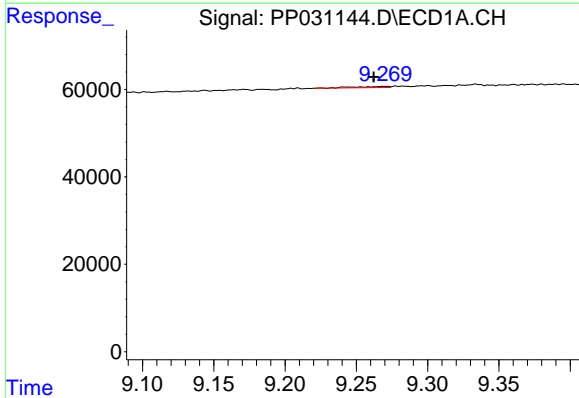
R.T.: 8.957 min
 Delta R.T.: -0.005 min
 Response: 5744
 Conc: 1.58 ng/ml

Instrument :
 ECD_P
ClientSampleId :
 LOD-MDL-WATER-01-QT4-2020



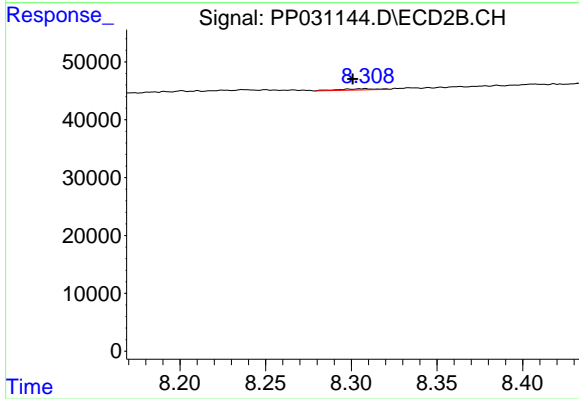
#37 AR-1262-2

R.T.: 0.000 min
 Exp R.T. : 8.013 min
 Response: 0
 Conc: N.D.



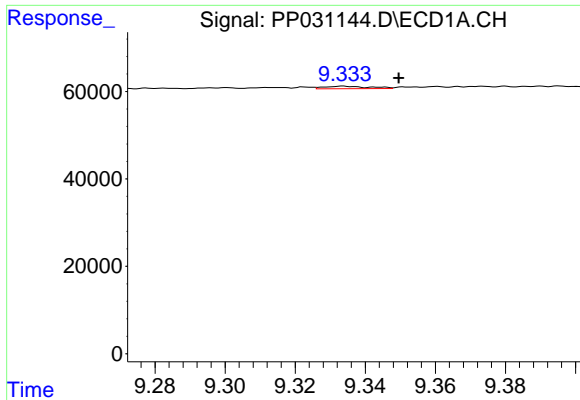
#38 AR-1262-3

R.T.: 9.270 min
 Delta R.T.: 0.008 min
 Response: 4425
 Conc: 1.71 ng/ml



#38 AR-1262-3

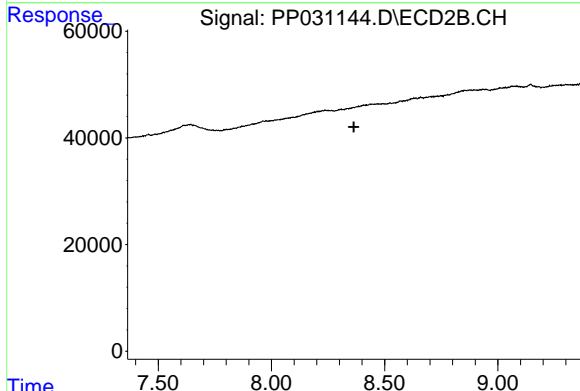
R.T.: 8.308 min
 Delta R.T.: 0.007 min
 Response: 3231
 Conc: 1.91 ng/ml



#39 AR-1262-4

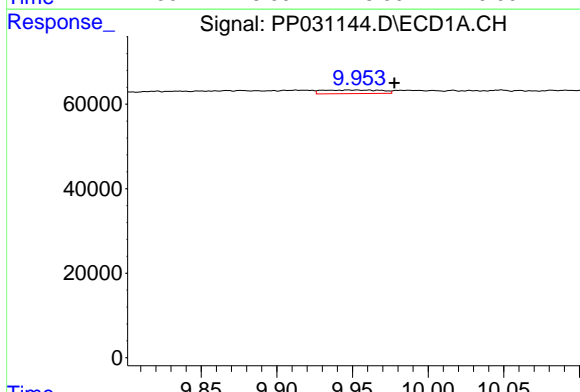
R.T.: 9.334 min
 Delta R.T.: -0.016 min
 Response: 5261
 Conc: 2.56 ng/ml

Instrument :
 ECD_P
ClientSampleId :
 LOD-MDL-WATER-01-QT4-2020



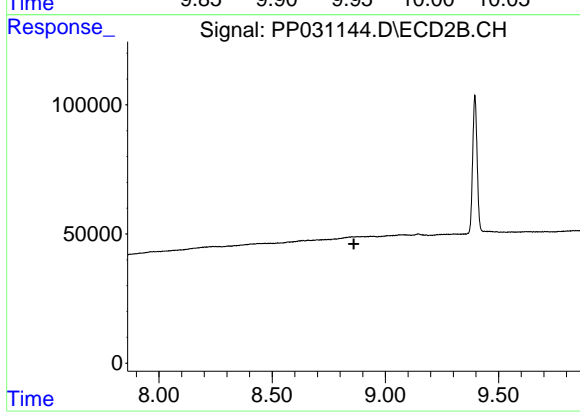
#39 AR-1262-4

R.T.: 0.000 min
 Exp R.T. : 8.364 min
 Response: 0
 Conc: N.D.



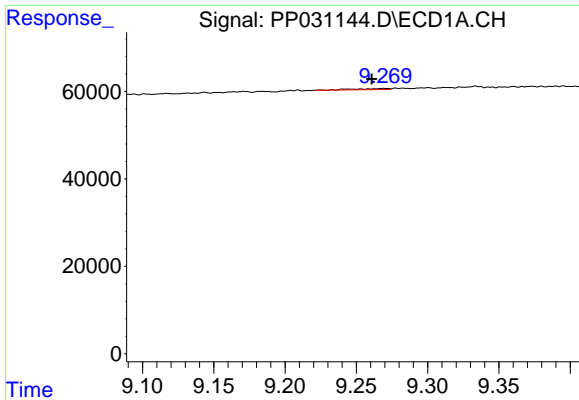
#40 AR-1262-5

R.T.: 9.953 min
 Delta R.T.: -0.025 min
 Response: 23353
 Conc: 16.49 ng/ml



#40 AR-1262-5

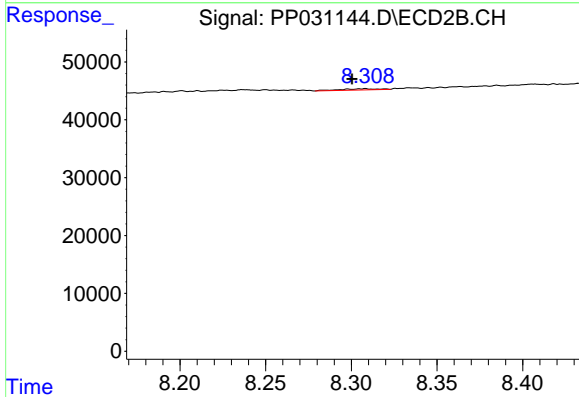
R.T.: 0.000 min
 Exp R.T. : 8.861 min
 Response: 0
 Conc: N.D.



#41 AR-1268-1

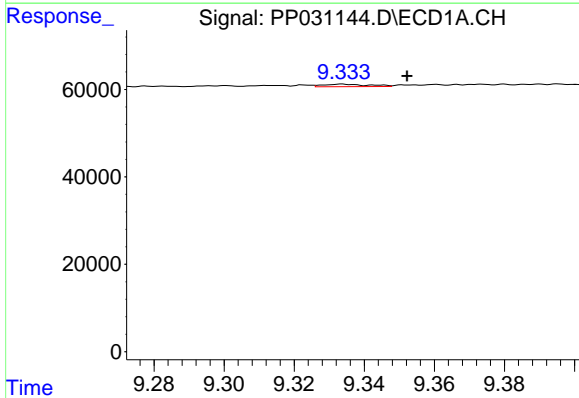
R.T.: 9.270 min
 Delta R.T.: 0.009 min
 Response: 4425
 Conc: 1.01 ng/ml

Instrument :
 ECD_P
ClientSampled :
 LOD-MDL-WATER-01-QT4-2020



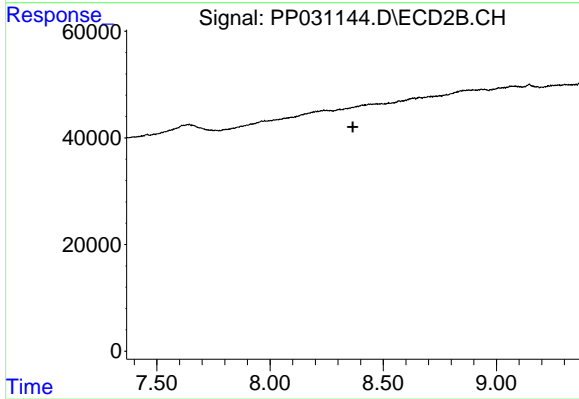
#41 AR-1268-1

R.T.: 8.308 min
 Delta R.T.: 0.008 min
 Response: 3231
 Conc: 0.66 ng/ml



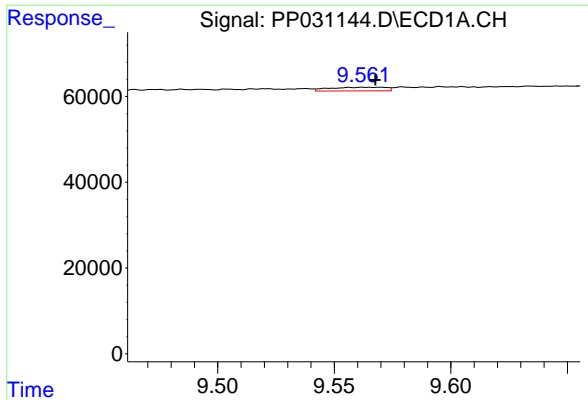
#42 AR-1268-2

R.T.: 9.334 min
 Delta R.T.: -0.018 min
 Response: 5261
 Conc: 1.22 ng/ml



#42 AR-1268-2

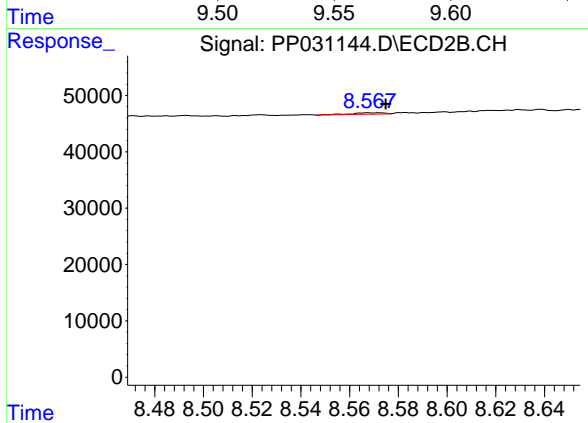
R.T.: 0.000 min
 Exp R.T.: 8.366 min
 Response: 0
 Conc: N.D.



#43 AR-1268-3

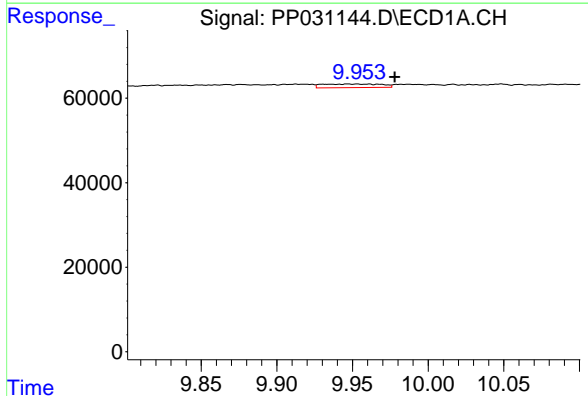
R.T.: 9.569 min
 Delta R.T.: 0.002 min
 Response: 14458
 Conc: 4.00 ng/ml

Instrument :
 ECD_P
ClientSampleId :
 LOD-MDL-WATER-01-QT4-2020



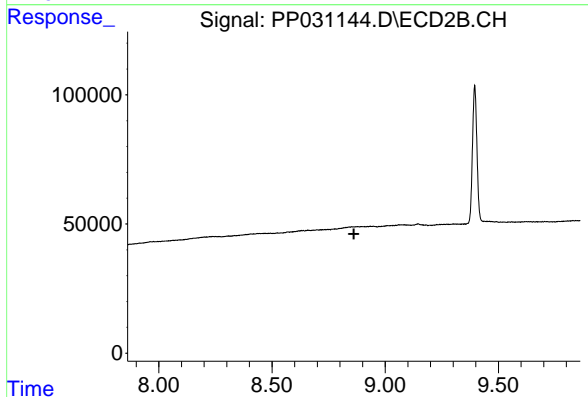
#43 AR-1268-3

R.T.: 8.568 min
 Delta R.T.: -0.007 min
 Response: 2319
 Conc: 0.58 ng/ml



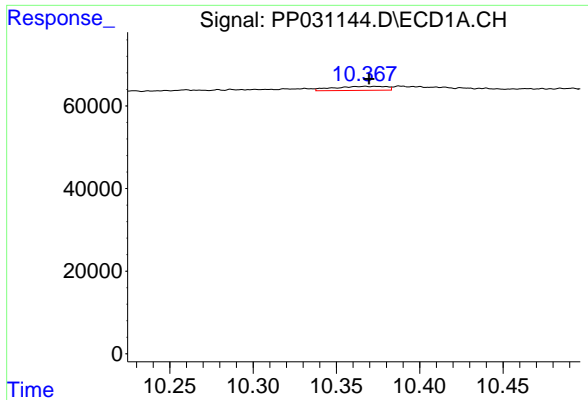
#44 AR-1268-4

R.T.: 9.953 min
 Delta R.T.: -0.025 min
 Response: 23353
 Conc: 14.74 ng/ml



#44 AR-1268-4

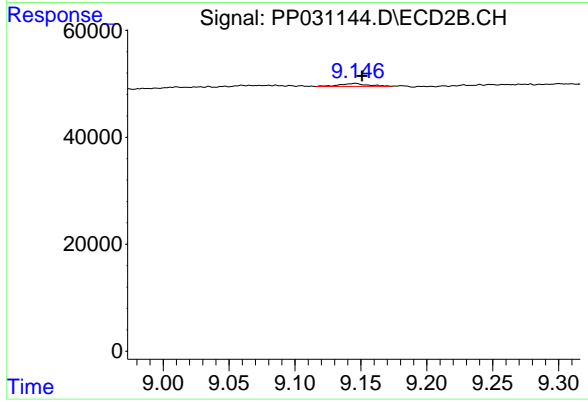
R.T.: 0.000 min
 Exp R.T. : 8.862 min
 Response: 0
 Conc: N.D.



#45 AR-1268-5

R.T.: 10.367 min
Delta R.T.: -0.002 min
Response: 21423
Conc: 1.79 ng/ml

Instrument :
ECD_P
ClientSampleId :
LOD-MDL-WATER-01-QT4-2020



#45 AR-1268-5

R.T.: 9.146 min
Delta R.T.: -0.005 min
Response: 8122
Conc: 0.61 ng/ml