

Data Path : Z:\pestpcbsrv\HPCHEM1\ECD_P\Data\PP110420\
 Data File : PP031149.D
 Signal(s) : Signal #1: ECD1A.CH Signal #2: ECD2B.CH
 Acq On : 05 Nov 2020 3:18
 Operator : DD\AJ
 Sample : I.BLK
 Misc :
 ALS Vial : 2 Sample Multiplier: 1

Instrument :
 ECD_P
 ClientSampled :
 I.BLK

Integration File signal 1: autoint1.e
 Integration File signal 2: autoint2.e
 Quant Time: Nov 05 05:15:10 2020
 Quant Method : Z:\pestpcbsrv\HPCHEM1\ECD_P\methods\PP110420.M
 Quant Title : GC EXTRACTABLES
 QLast Update : Wed Nov 04 08:24:38 2020
 Response via : Initial Calibration
 Integrator: ChemStation 6890 Scale Mode: Small noise peaks clipped

Volume Inj. : 2 µl
 Signal #1 Phase : ZB-MR2 Signal #2 Phase: ZB-MR2
 Signal #1 Info : 30Mx0.32mmx 0.50µ Signal #2 Info : 30M x 0.32mm x 0.25µm

Compound	RT#1	RT#2	Resp#1	Resp#2	ng/ml	ng/ml

System Monitoring Compounds						
1) SA Tetrachlo...	4.798	4.073	1136414	1110141	17.014	16.702
2) SA Decachlor...	10.680	9.395	700203	780293	17.512	18.687
Target Compounds						
9) L2 AR-1221-2	5.145	4.427	15167	13513	33.767	32.572
20) L4 AR-1242-5	0.000	6.233f	0	48945	N.D.	49.165 #
24) L5 AR-1248-4	7.015f	0.000	39691	0	26.042	N.D. #
25) L5 AR-1248-5	0.000	6.233f	0	48945	N.D.	38.754 #
26) L6 AR-1254-1	7.015	6.233f	39691	48945	28.270	24.887
28) L6 AR-1254-3	7.621	0.000	442039	0	191.522	N.D. #
30) L6 AR-1254-5	0.000	7.476	0	5885	N.D.	2.688 #
33) L7 AR-1260-3	0.000	7.274	0	4747	N.D.	2.088 #
35) L7 AR-1260-5	8.964	8.009	11817	4129	3.134	0.917 #
36) L8 AR-1262-1	0.000	7.502	0	2373	N.D.	1.022 #
37) L8 AR-1262-2	8.964	8.009	11817	4129	3.251	0.996 #
38) L8 AR-1262-3	9.283f	8.299	8703	5975	3.367	3.524
39) L8 AR-1262-4	9.354	8.362	17340	1619	8.422	0.510 #
40) L8 AR-1262-5	9.975	0.000	33891	0	23.926	N.D. #
41) L9 AR-1268-1	9.283f	8.299	8703	5975	1.992	1.220 #
42) L9 AR-1268-2	9.354	8.362	17340	1619	4.032	0.340 #
44) L9 AR-1268-4	9.975	0.000	33891	0	21.398	N.D. #
45) L9 AR-1268-5	10.385f	9.142	61010	6827	5.102	0.509 #

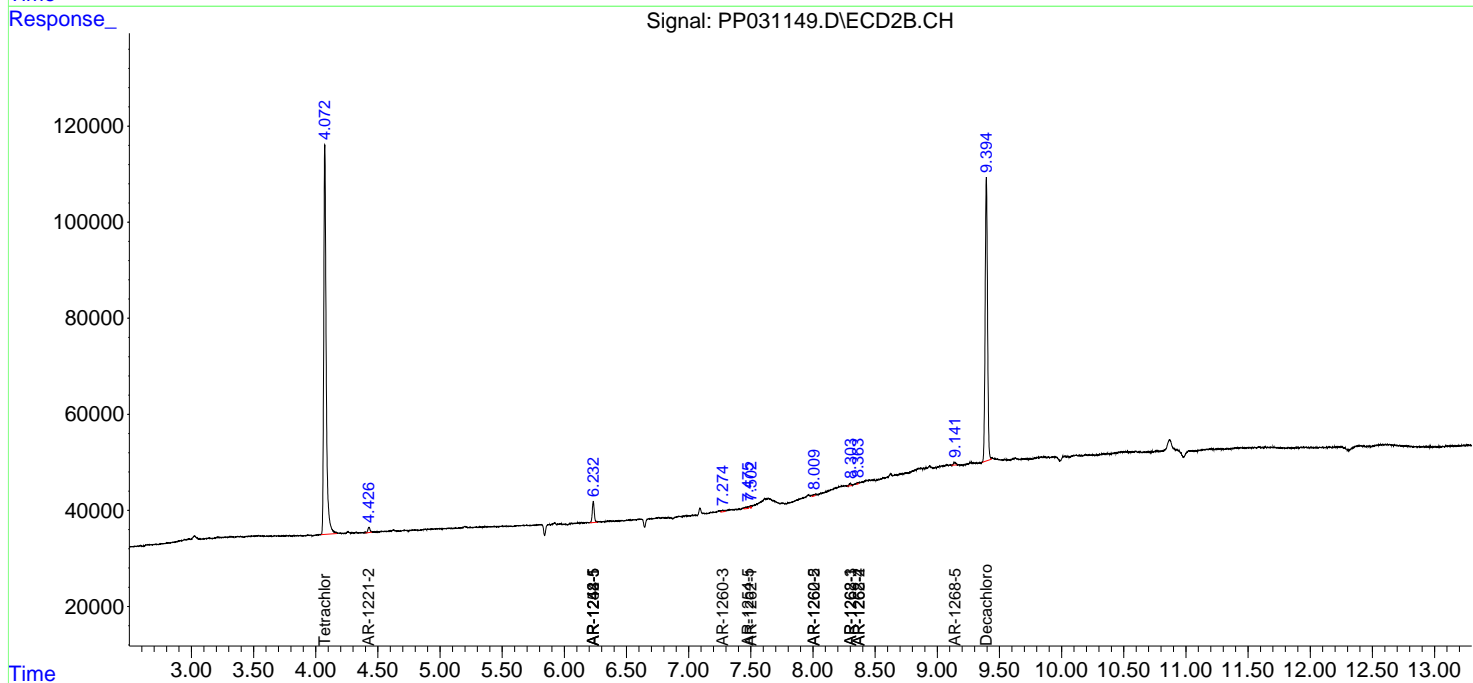
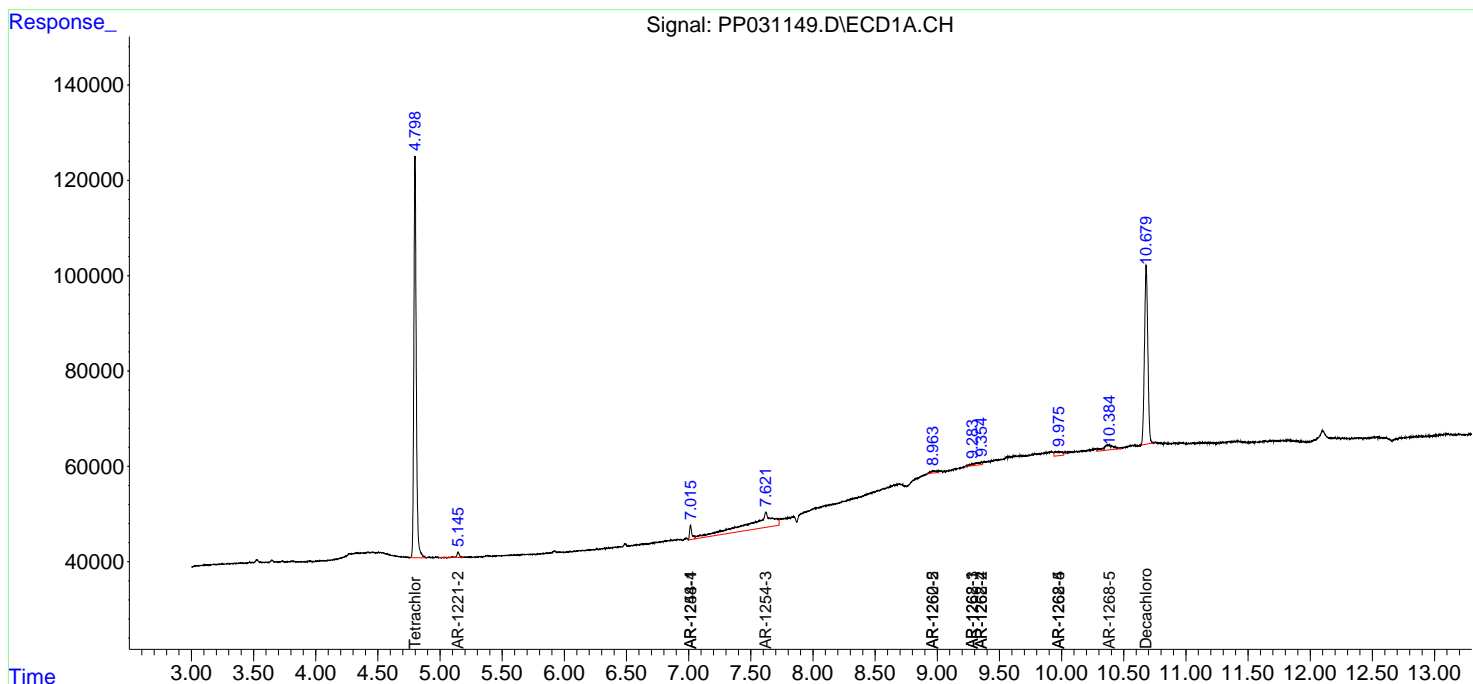
(f)=RT Delta > 1/2 Window (#)=Amounts differ by > 25% (m)=manual int.

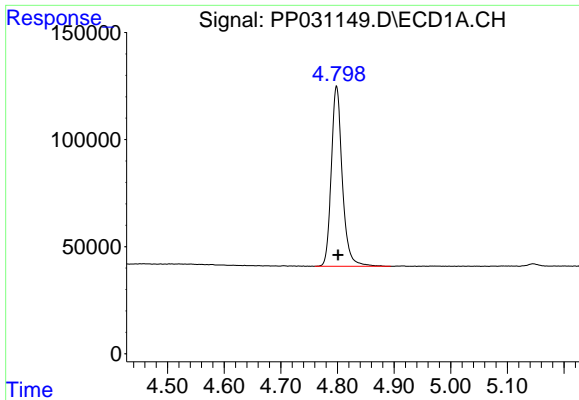
Data Path : Z:\pestpcbsrv\HPCHEM1\ECD_P\Data\PP110420\
 Data File : PP031149.D
 Signal(s) : Signal #1: ECD1A.CH Signal #2: ECD2B.CH
 Acq On : 05 Nov 2020 3:18
 Operator : DD\AJ
 Sample : I.BLK
 Misc :
 ALS Vial : 2 Sample Multiplier: 1

Instrument :
 ECD_P
 ClientSampled :
 I.BLK

Integration File signal 1: autoint1.e
 Integration File signal 2: autoint2.e
 Quant Time: Nov 05 05:15:10 2020
 Quant Method : Z:\pestpcbsrv\HPCHEM1\ECD_P\methods\PP110420.M
 Quant Title : GC EXTRACTABLES
 QLast Update : Wed Nov 04 08:24:38 2020
 Response via : Initial Calibration
 Integrator: ChemStation 6890 Scale Mode: Small noise peaks clipped

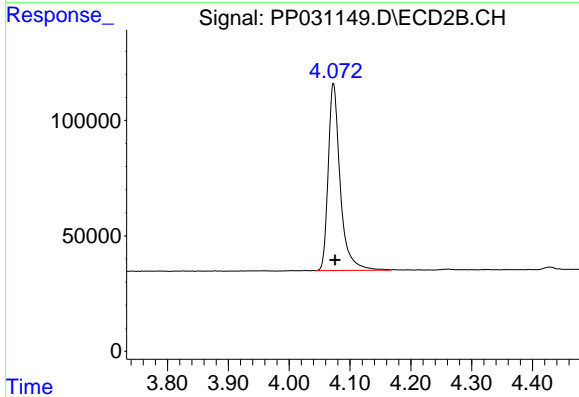
Volume Inj. : 2 µl
 Signal #1 Phase : ZB-MR1 Signal #2 Phase: ZB-MR2
 Signal #1 Info : 30Mx0.32mmx 0.50µ Signal #2 Info : 30M x 0.32mm x 0.25µm



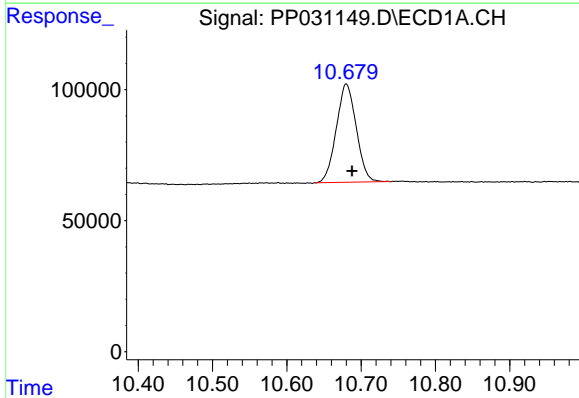


#1 Tetrachloro-m-xylene
 R.T.: 4.798 min
 Delta R.T.: -0.003 min
 Response: 1136414
 Conc: 17.01 ng/ml

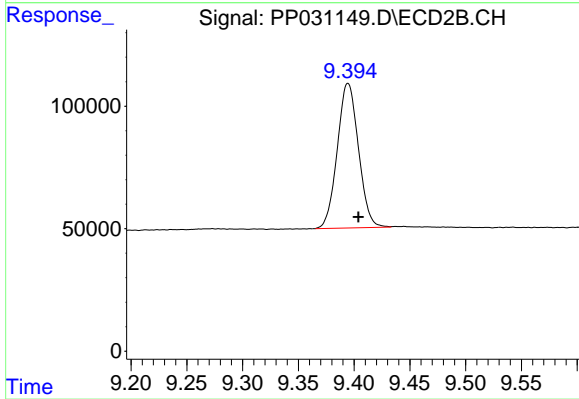
Instrument :
 ECD_P
 ClientSampled :
 I.BLK



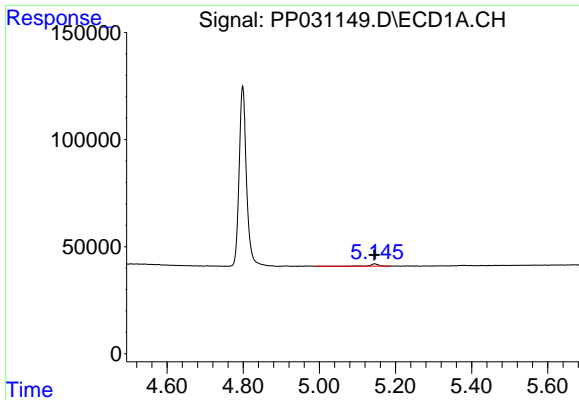
#1 Tetrachloro-m-xylene
 R.T.: 4.073 min
 Delta R.T.: -0.003 min
 Response: 1110141
 Conc: 16.70 ng/ml



#2 Decachlorobiphenyl
 R.T.: 10.680 min
 Delta R.T.: -0.007 min
 Response: 700203
 Conc: 17.51 ng/ml

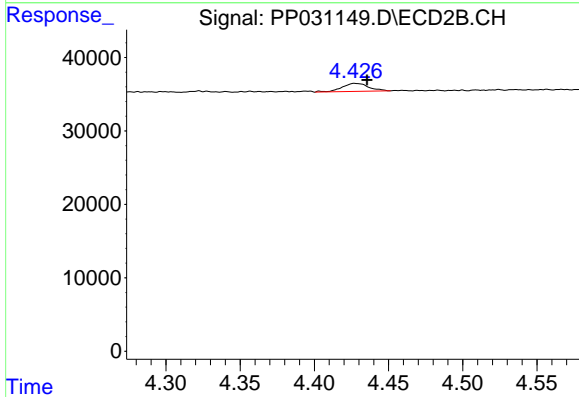


#2 Decachlorobiphenyl
 R.T.: 9.395 min
 Delta R.T.: -0.009 min
 Response: 780293
 Conc: 18.69 ng/ml

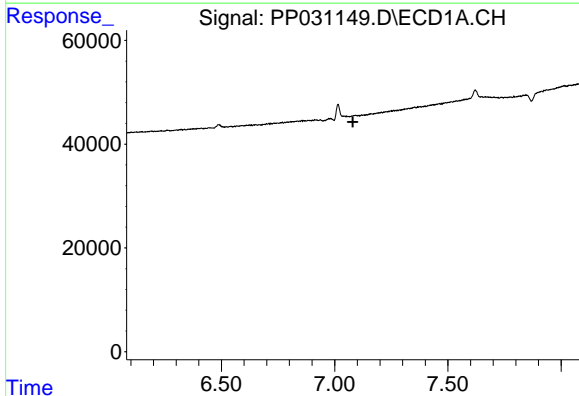


#9 AR-1221-2
 R.T.: 5.145 min
 Delta R.T.: 0.001 min
 Response: 15167
 Conc: 33.77 ng/ml

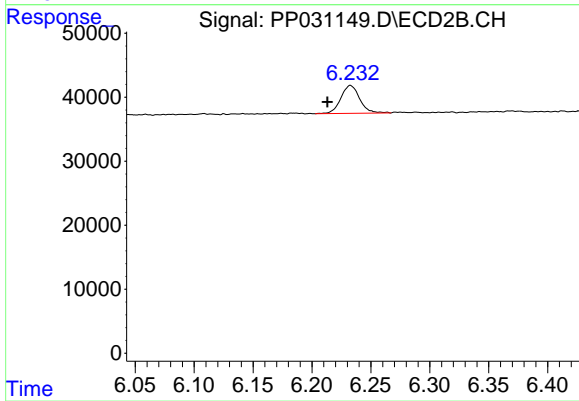
Instrument :
 ECD_P
 ClientSampleId :
 I.BLK



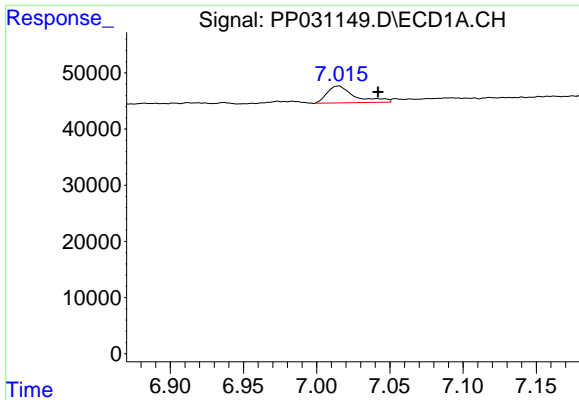
#9 AR-1221-2
 R.T.: 4.427 min
 Delta R.T.: -0.009 min
 Response: 13513
 Conc: 32.57 ng/ml



#20 AR-1242-5
 R.T.: 0.000 min
 Exp R.T. : 7.081 min
 Response: 0
 Conc: N.D.

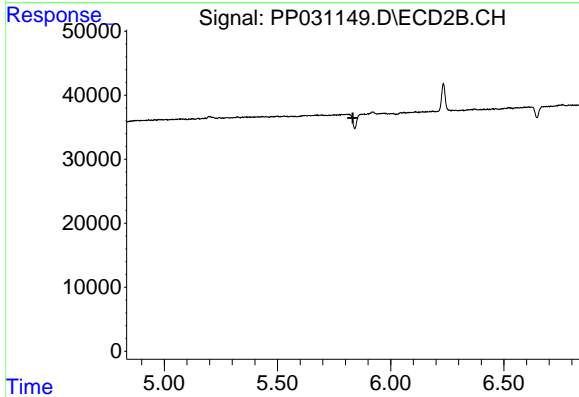


#20 AR-1242-5
 R.T.: 6.233 min
 Delta R.T.: 0.020 min
 Response: 48945
 Conc: 49.17 ng/ml

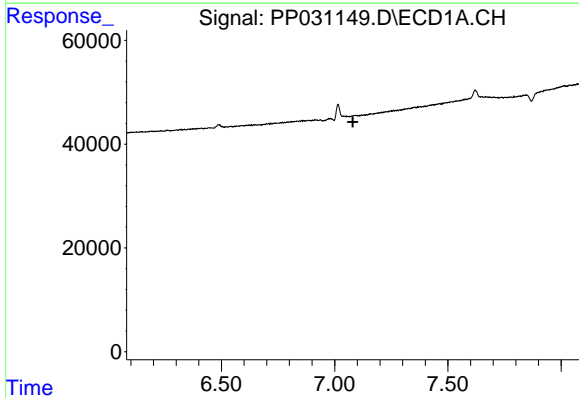


#24 AR-1248-4
 R.T.: 7.015 min
 Delta R.T.: -0.027 min
 Response: 39691
 Conc: 26.04 ng/ml

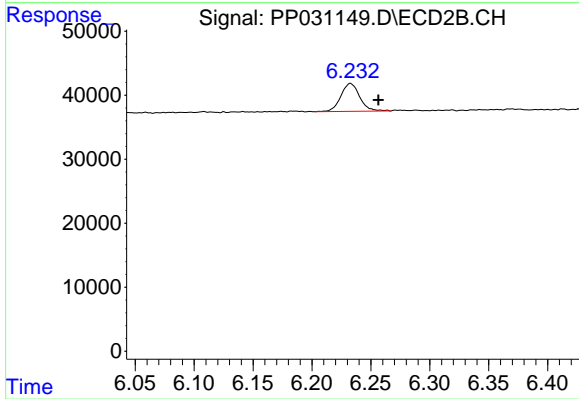
Instrument :
 ECD_P
 ClientSampleId :
 I.BLK



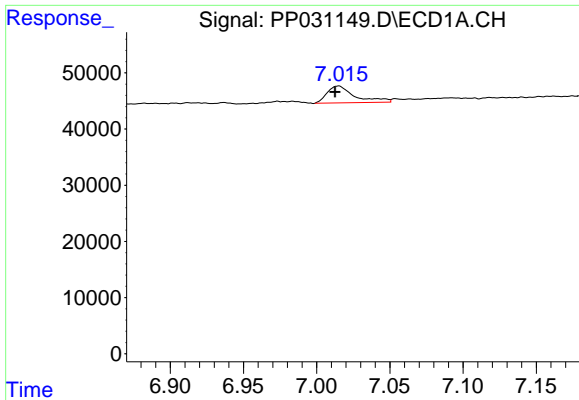
#24 AR-1248-4
 R.T.: 0.000 min
 Exp R.T. : 5.833 min
 Response: 0
 Conc: N.D.



#25 AR-1248-5
 R.T.: 0.000 min
 Exp R.T. : 7.080 min
 Response: 0
 Conc: N.D.



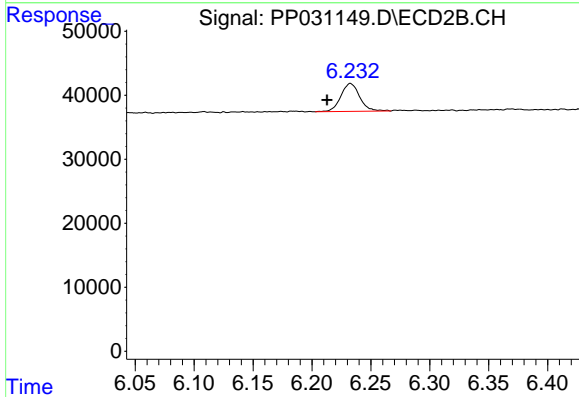
#25 AR-1248-5
 R.T.: 6.233 min
 Delta R.T.: -0.024 min
 Response: 48945
 Conc: 38.75 ng/ml



#26 AR-1254-1

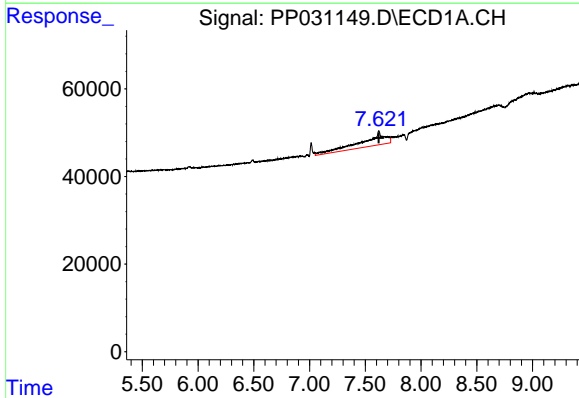
R.T.: 7.015 min
 Delta R.T.: 0.002 min
 Response: 39691
 Conc: 28.27 ng/ml

Instrument :
 ECD_P
 ClientSampled :
 I.BLK



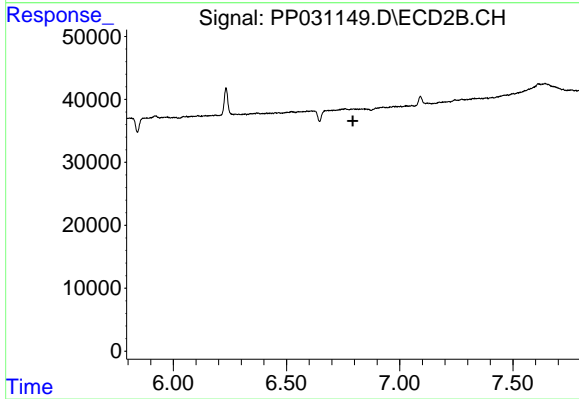
#26 AR-1254-1

R.T.: 6.233 min
 Delta R.T.: 0.020 min
 Response: 48945
 Conc: 24.89 ng/ml



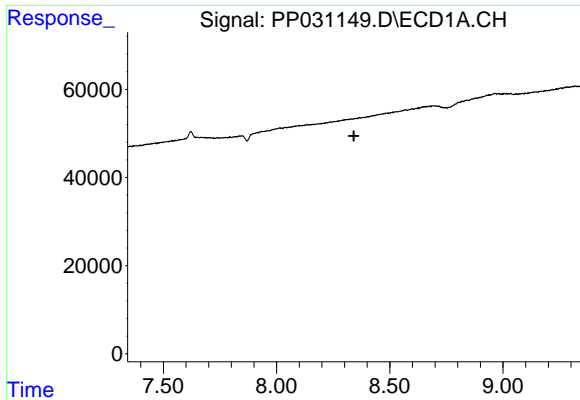
#28 AR-1254-3

R.T.: 7.621 min
 Delta R.T.: 0.001 min
 Response: 442039
 Conc: 191.52 ng/ml



#28 AR-1254-3

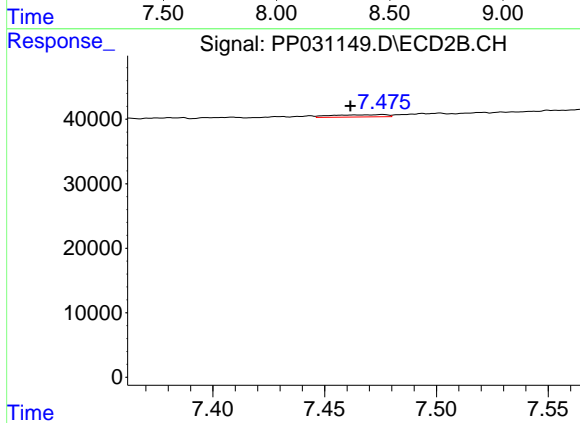
R.T.: 0.000 min
 Exp R.T. : 6.793 min
 Response: 0
 Conc: N.D.



#30 AR-1254-5

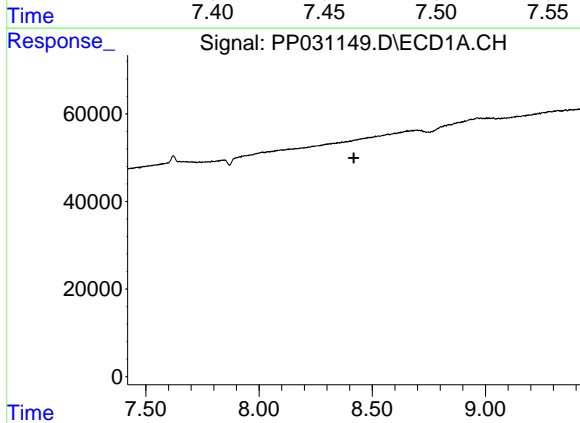
R.T.: 0.000 min
 Exp R.T. : 8.341 min
 Response: 0
 Conc: N.D.

Instrument :
 ECD_P
 ClientSampled :
 I.BLK



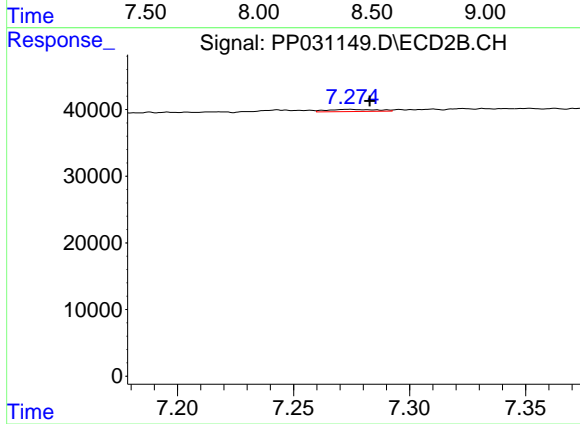
#30 AR-1254-5

R.T.: 7.476 min
 Delta R.T.: 0.015 min
 Response: 5885
 Conc: 2.69 ng/ml



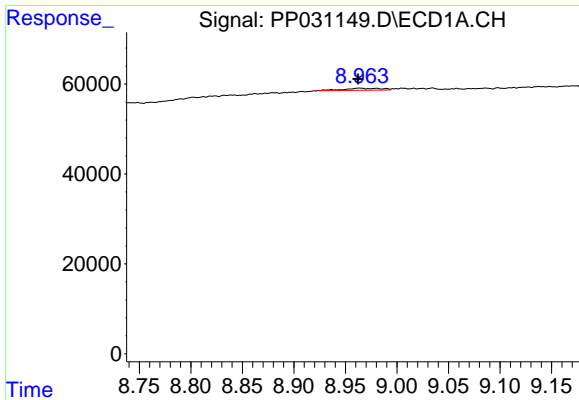
#33 AR-1260-3

R.T.: 0.000 min
 Exp R.T. : 8.419 min
 Response: 0
 Conc: N.D.



#33 AR-1260-3

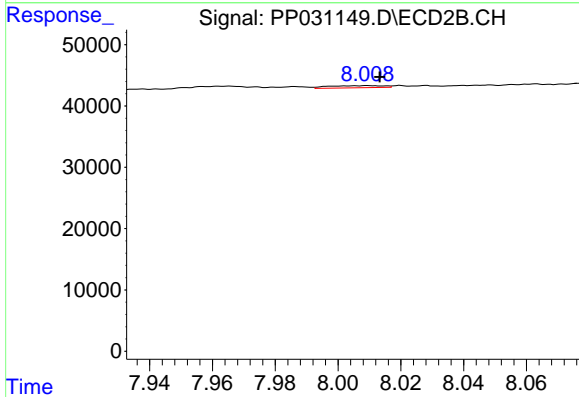
R.T.: 7.274 min
 Delta R.T.: -0.008 min
 Response: 4747
 Conc: 2.09 ng/ml



#35 AR-1260-5

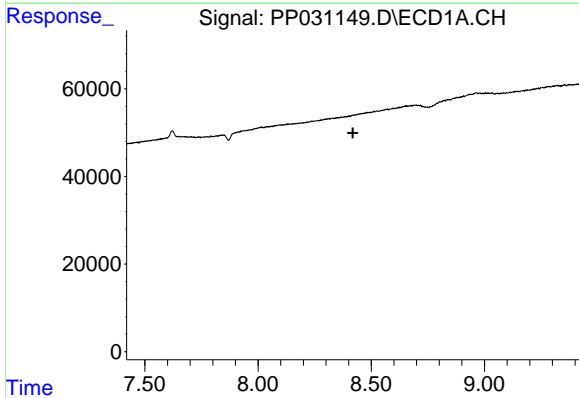
R.T.: 8.964 min
 Delta R.T.: 0.001 min
 Response: 11817
 Conc: 3.13 ng/ml

Instrument :
 ECD_P
 ClientSampleId :
 I.BLK



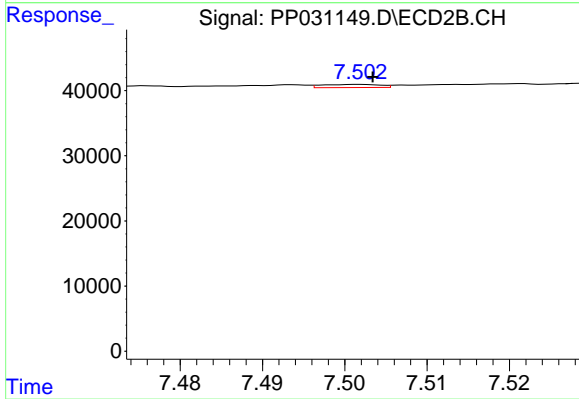
#35 AR-1260-5

R.T.: 8.009 min
 Delta R.T.: -0.004 min
 Response: 4129
 Conc: 0.92 ng/ml



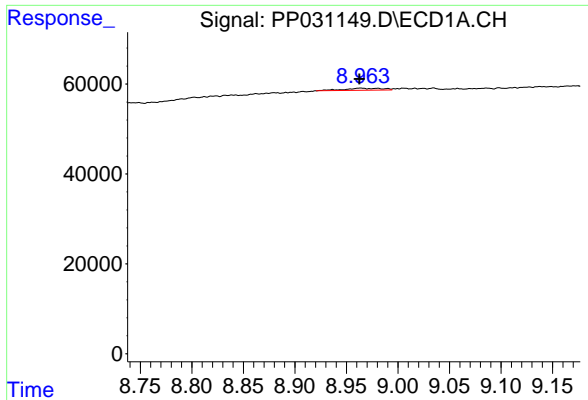
#36 AR-1262-1

R.T.: 0.000 min
 Exp R.T. : 8.419 min
 Response: 0
 Conc: N.D.



#36 AR-1262-1

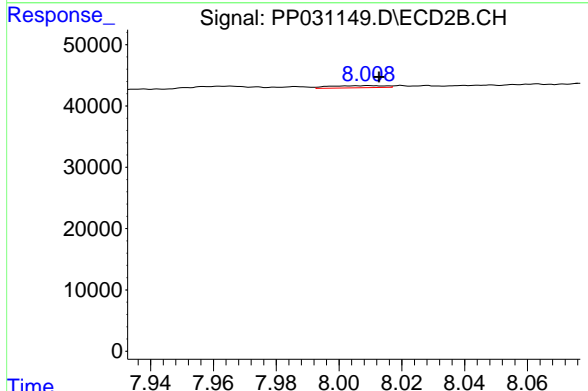
R.T.: 7.502 min
 Delta R.T.: -0.002 min
 Response: 2373
 Conc: 1.02 ng/ml



#37 AR-1262-2

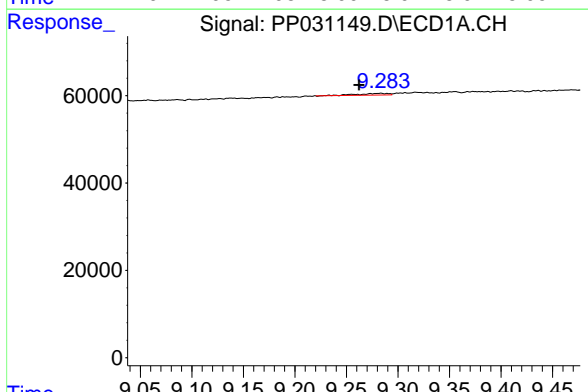
R.T.: 8.964 min
 Delta R.T.: 0.001 min
 Response: 11817
 Conc: 3.25 ng/ml

Instrument :
 ECD_P
 ClientSampleId :
 I.BLK



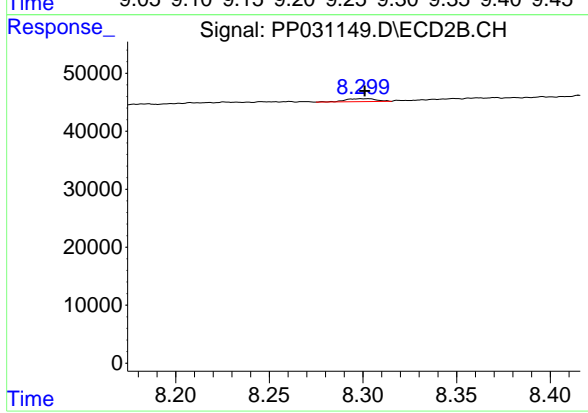
#37 AR-1262-2

R.T.: 8.009 min
 Delta R.T.: -0.003 min
 Response: 4129
 Conc: 1.00 ng/ml



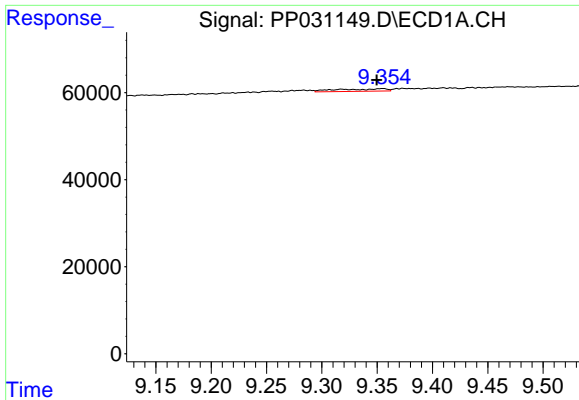
#38 AR-1262-3

R.T.: 9.283 min
 Delta R.T.: 0.021 min
 Response: 8703
 Conc: 3.37 ng/ml



#38 AR-1262-3

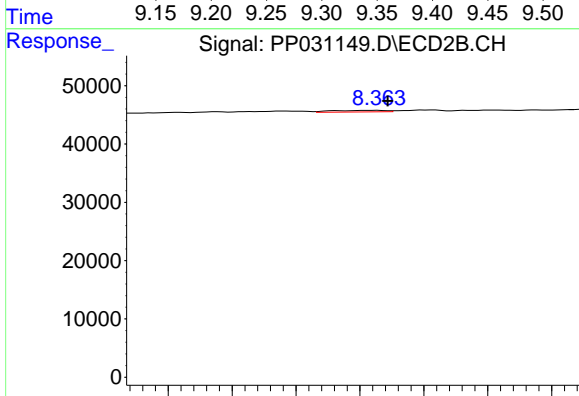
R.T.: 8.299 min
 Delta R.T.: -0.002 min
 Response: 5975
 Conc: 3.52 ng/ml



#39 AR-1262-4

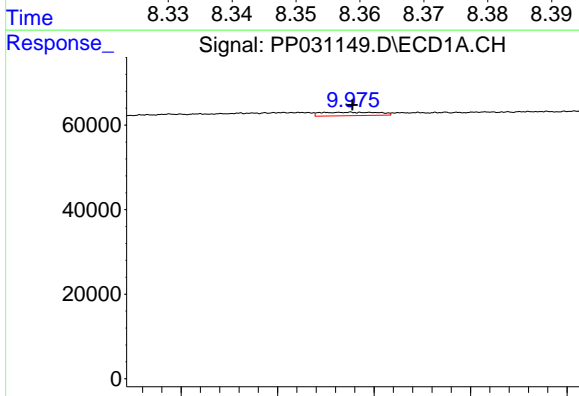
R.T.: 9.354 min
 Delta R.T.: 0.005 min
 Response: 17340
 Conc: 8.42 ng/ml

Instrument :
 ECD_P
 ClientSampled :
 I.BLK



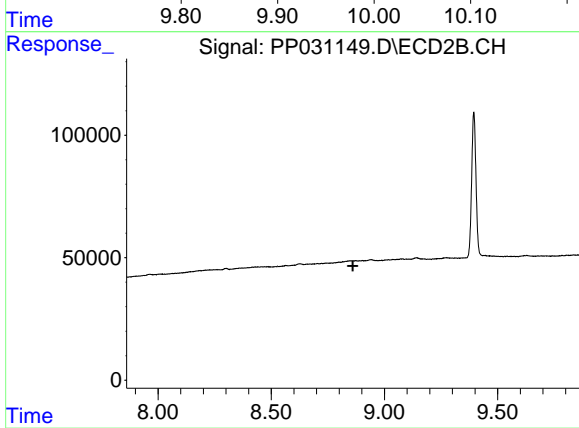
#39 AR-1262-4

R.T.: 8.362 min
 Delta R.T.: -0.002 min
 Response: 1619
 Conc: 0.51 ng/ml



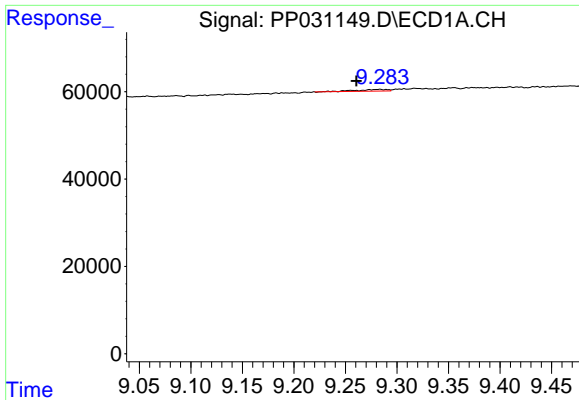
#40 AR-1262-5

R.T.: 9.975 min
 Delta R.T.: -0.002 min
 Response: 33891
 Conc: 23.93 ng/ml



#40 AR-1262-5

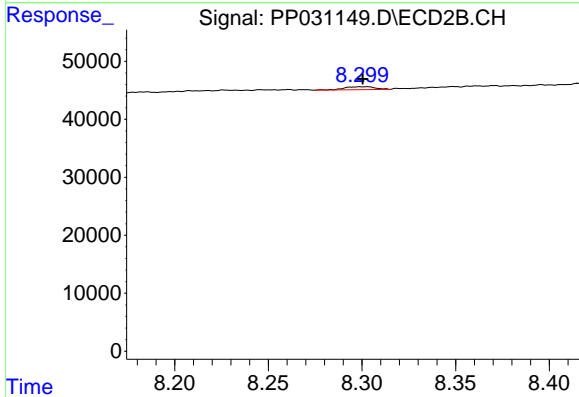
R.T.: 0.000 min
 Exp R.T. : 8.861 min
 Response: 0
 Conc: N.D.



#41 AR-1268-1

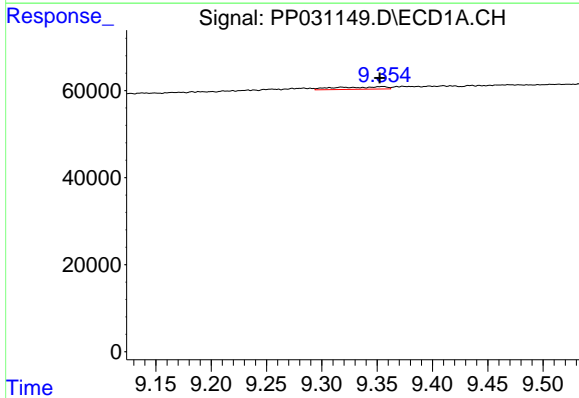
R.T.: 9.283 min
 Delta R.T.: 0.023 min
 Response: 8703
 Conc: 1.99 ng/ml

Instrument :
 ECD_P
 ClientSampled :
 I.BLK



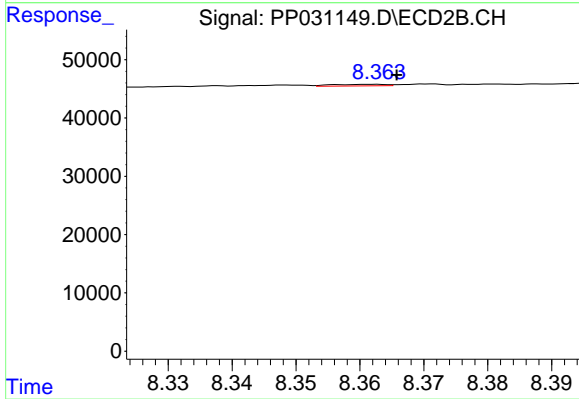
#41 AR-1268-1

R.T.: 8.299 min
 Delta R.T.: -0.001 min
 Response: 5975
 Conc: 1.22 ng/ml



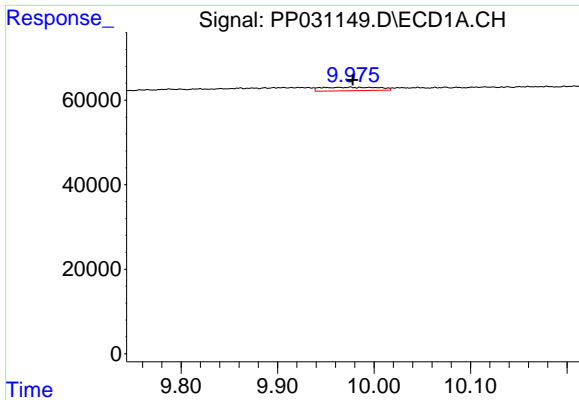
#42 AR-1268-2

R.T.: 9.354 min
 Delta R.T.: 0.002 min
 Response: 17340
 Conc: 4.03 ng/ml



#42 AR-1268-2

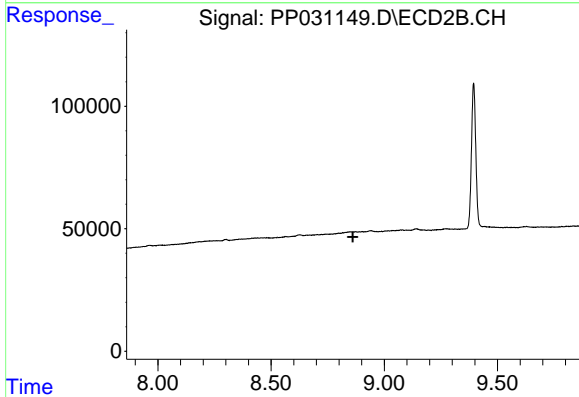
R.T.: 8.362 min
 Delta R.T.: -0.003 min
 Response: 1619
 Conc: 0.34 ng/ml



#44 AR-1268-4

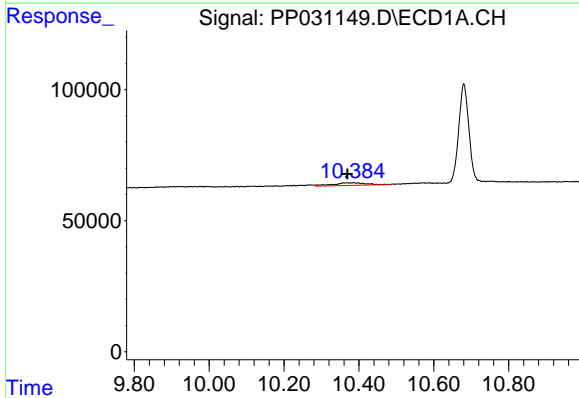
R.T.: 9.975 min
 Delta R.T.: -0.002 min
 Response: 33891
 Conc: 21.40 ng/ml

Instrument :
 ECD_P
 ClientSampled :
 I.BLK



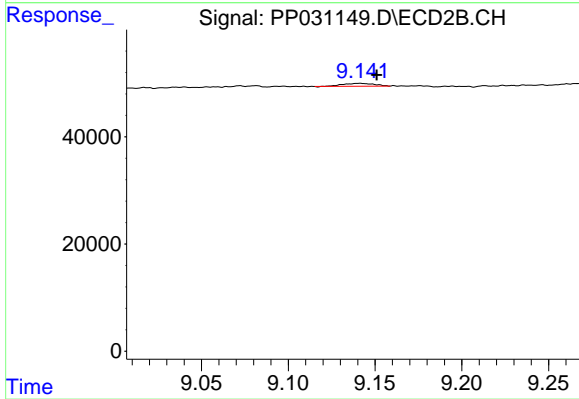
#44 AR-1268-4

R.T.: 0.000 min
 Exp R.T. : 8.862 min
 Response: 0
 Conc: N.D.



#45 AR-1268-5

R.T.: 10.385 min
 Delta R.T.: 0.016 min
 Response: 61010
 Conc: 5.10 ng/ml



#45 AR-1268-5

R.T.: 9.142 min
 Delta R.T.: -0.010 min
 Response: 6827
 Conc: 0.51 ng/ml