

Data Path : Z:\pestpcbsrv\HPCHEM1\ECD\_P\Data\PP110420\  
 Data File : PP031164.D  
 Signal(s) : Signal #1: ECD1A.CH Signal #2: ECD2B.CH  
 Acq On : 05 Nov 2020 8:17  
 Operator : DD\AJ  
 Sample : L4214-09  
 Misc : AR1221 MDL 25 PPB  
 ALS Vial : 67 Sample Multiplier: 1

Instrument :  
 ECD\_P  
 ClientSampleId :

Integration File signal 1: autoint1.e  
 Integration File signal 2: autoint2.e  
 Quant Time: Nov 05 11:13:49 2020  
 Quant Method : Z:\pestpcbsrv\HPCHEM1\ECD\_P\methods\PP110420.M  
 Quant Title : GC EXTRACTABLES  
 QLast Update : Wed Nov 04 08:24:38 2020  
 Response via : Initial Calibration  
 Integrator: ChemStation 6890 Scale Mode: Small noise peaks clipped

Volume Inj. : 2 µl  
 Signal #1 Phase : ZB-MR2 Signal #2 Phase: ZB-MR2  
 Signal #1 Info : 30Mx0.32mmx 0.50µ Signal #2 Info : 30M x 0.32mm x 0.25µm

Compound	RT#1	RT#2	Resp#1	Resp#2	ng/ml	ng/ml
-----						
System Monitoring Compounds						
1) SA Tetrachlo...	4.799	4.072	1067782	1026849	15.987	15.449
2) SA Decachlor...	10.678	9.393	693348	767905	17.341	18.390
Target Compounds						
8) L2 AR-1221-1	0.000	4.334	0	12399	N.D.	22.015 #
9) L2 AR-1221-2	0.000	4.427	0	18270	N.D.	44.037 #
10) L2 AR-1221-3	0.000	4.520	0	24686	N.D.	18.824 #
11) L3 AR-1232-1	0.000	4.520	0	24686	N.D.	20.609 #
20) L4 AR-1242-5	0.000	6.231f	0	3815	N.D.	3.832 #
25) L5 AR-1248-5	0.000	6.231f	0	3815	N.D.	3.021 #
26) L6 AR-1254-1	0.000	6.231f	0	3815	N.D.	1.940 #
30) L6 AR-1254-5	0.000	7.456	0	1449	N.D.	0.662 #
33) L7 AR-1260-3	0.000	7.271	0	8150	N.D.	3.585 #
35) L7 AR-1260-5	0.000	8.016	0	1984	N.D.	0.441 #
36) L8 AR-1262-1	0.000	7.514	0	1706	N.D.	0.735 #
37) L8 AR-1262-2	0.000	8.010	0	2510	N.D.	0.605 #
38) L8 AR-1262-3	0.000	8.299	0	11353	N.D.	6.696 #
41) L9 AR-1268-1	0.000	8.299	0	11353	N.D.	2.319 #
-----						

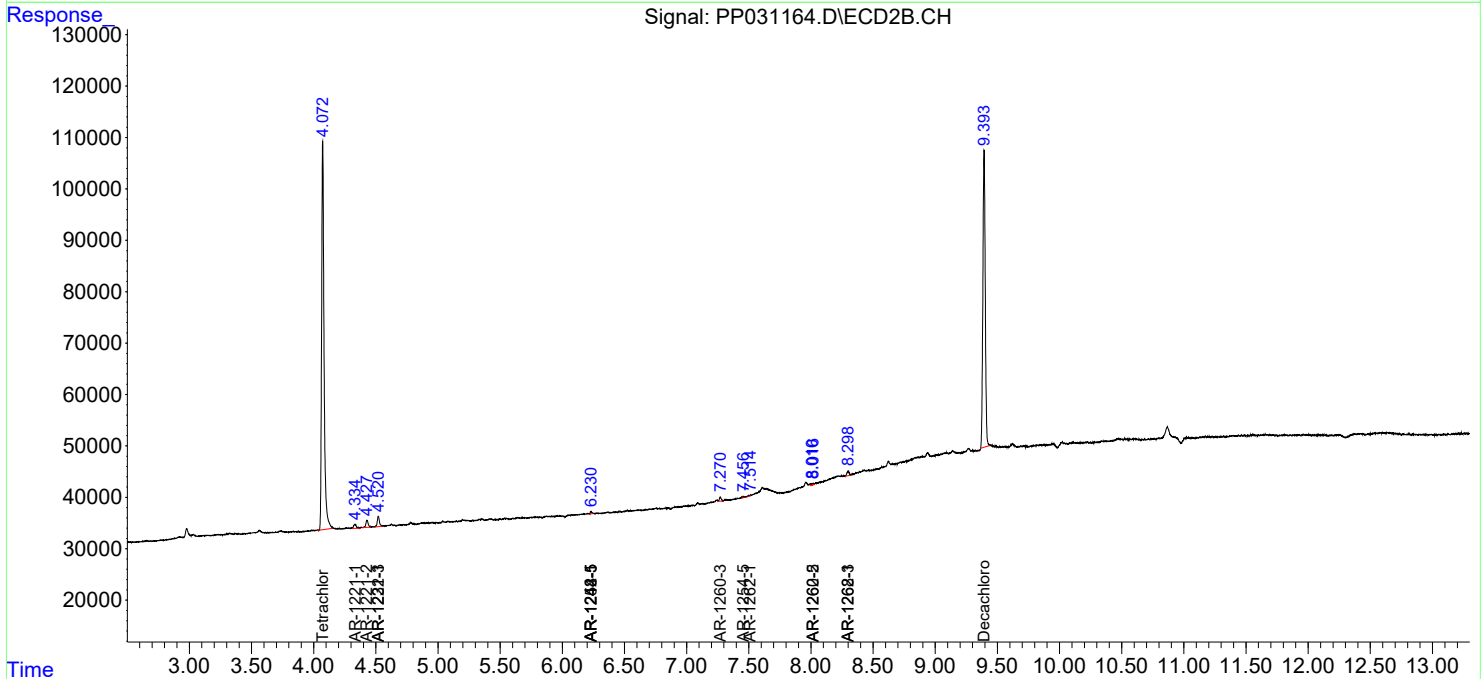
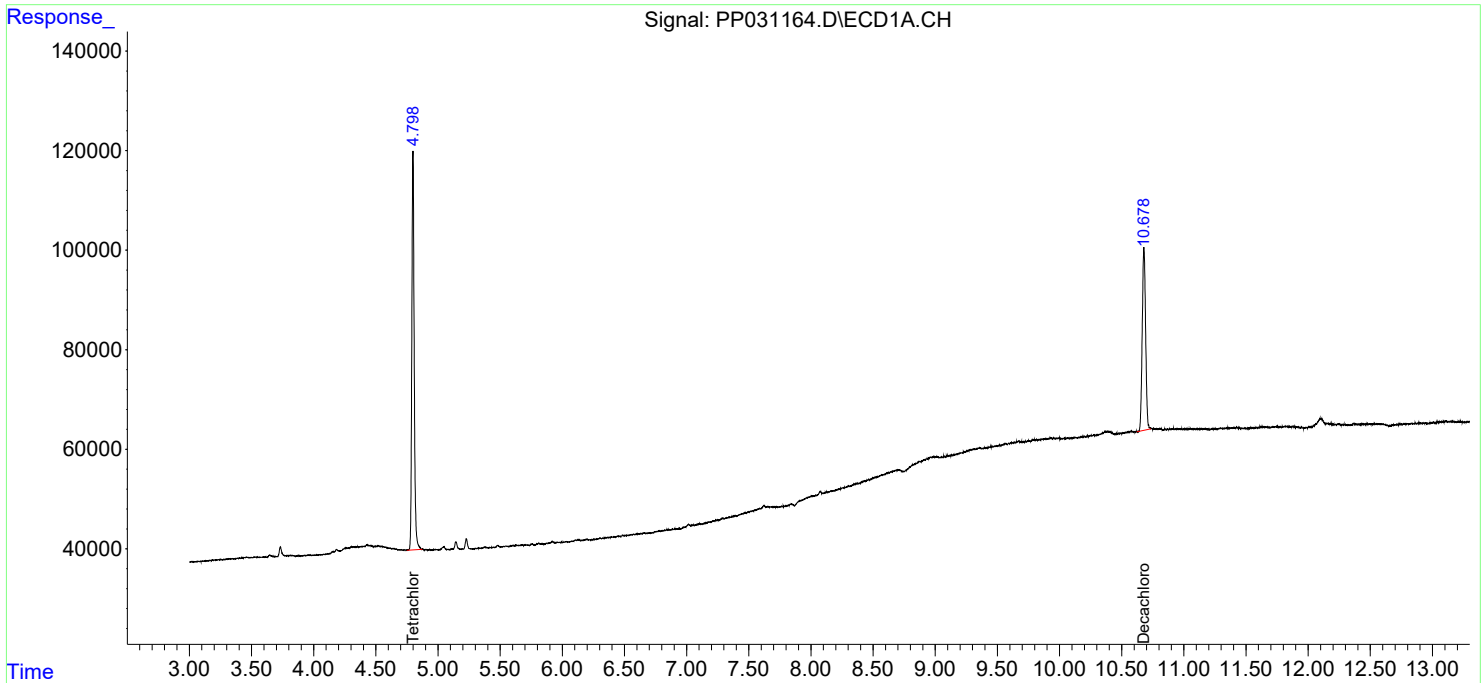
(f)=RT Delta > 1/2 Window (#)=Amounts differ by > 25% (m)=manual int.

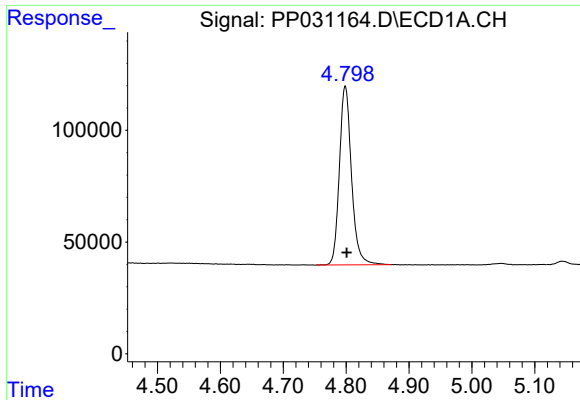
Data Path : Z:\pestpcbsrv\HPCHEM1\ECD\_P\Data\PP110420\  
 Data File : PP031164.D  
 Signal(s) : Signal #1: ECD1A.CH Signal #2: ECD2B.CH  
 Acq On : 05 Nov 2020 8:17  
 Operator : DD\AJ  
 Sample : L4214-09  
 Misc : AR1221 MDL 25 PPB  
 ALS Vial : 67 Sample Multiplier: 1

Instrument :  
 ECD\_P  
 ClientSampleId :

Integration File signal 1: autoint1.e  
 Integration File signal 2: autoint2.e  
 Quant Time: Nov 05 11:13:49 2020  
 Quant Method : Z:\pestpcbsrv\HPCHEM1\ECD\_P\methods\PP110420.M  
 Quant Title : GC EXTRACTABLES  
 QLast Update : Wed Nov 04 08:24:38 2020  
 Response via : Initial Calibration  
 Integrator: ChemStation 6890 Scale Mode: Small noise peaks clipped

Volume Inj. : 2 µl  
 Signal #1 Phase : ZB-MR1 Signal #2 Phase: ZB-MR2  
 Signal #1 Info : 30Mx0.32mmx 0.50µ Signal #2 Info : 30M x 0.32mm x 0.25µm





#1 Tetrachloro-m-xylene

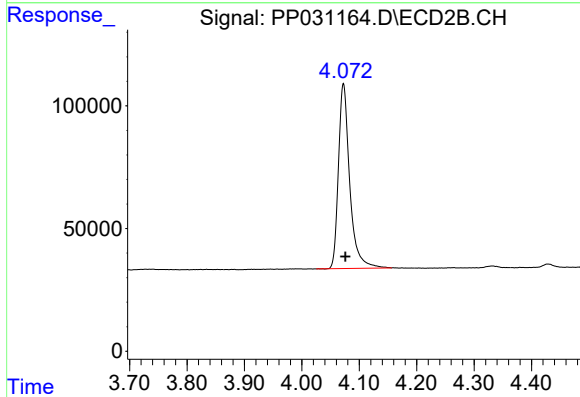
R.T.: 4.799 min

Delta R.T.: -0.002 min

Response: 1067782

Conc: 15.99 ng/ml

Instrument :  
ECD\_P  
ClientSampled :



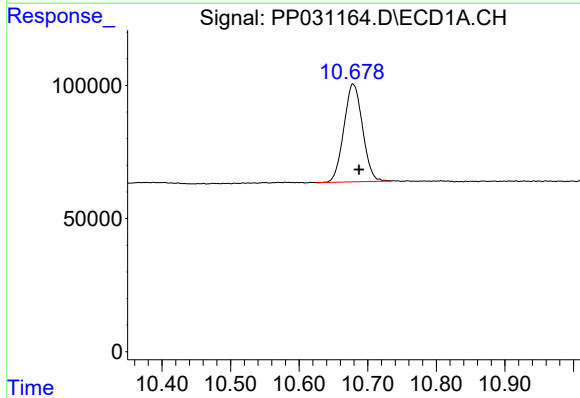
#1 Tetrachloro-m-xylene

R.T.: 4.072 min

Delta R.T.: -0.003 min

Response: 1026849

Conc: 15.45 ng/ml



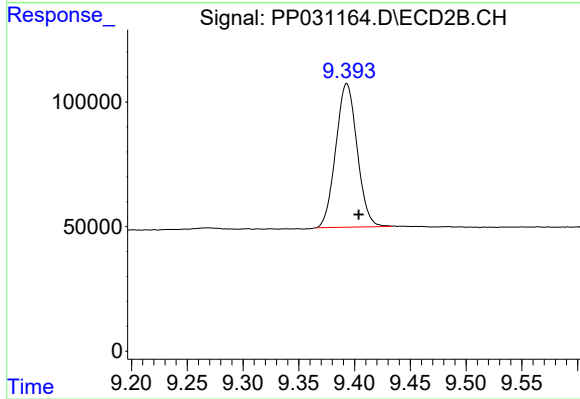
#2 Decachlorobiphenyl

R.T.: 10.678 min

Delta R.T.: -0.009 min

Response: 693348

Conc: 17.34 ng/ml



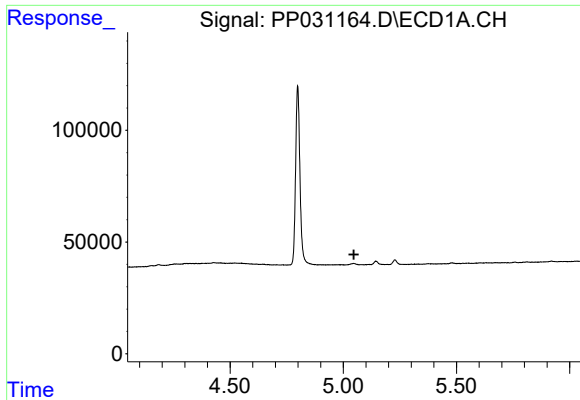
#2 Decachlorobiphenyl

R.T.: 9.393 min

Delta R.T.: -0.011 min

Response: 767905

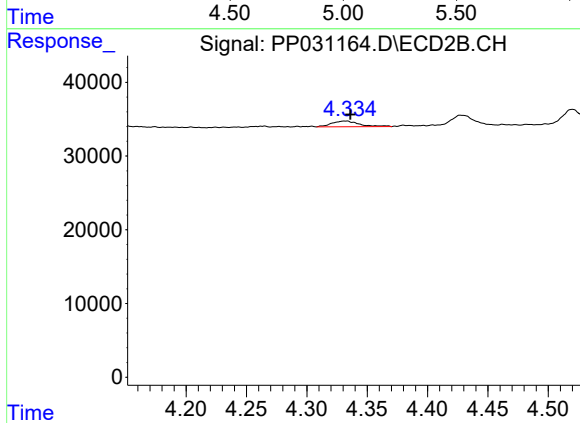
Conc: 18.39 ng/ml



#8 AR-1221-1

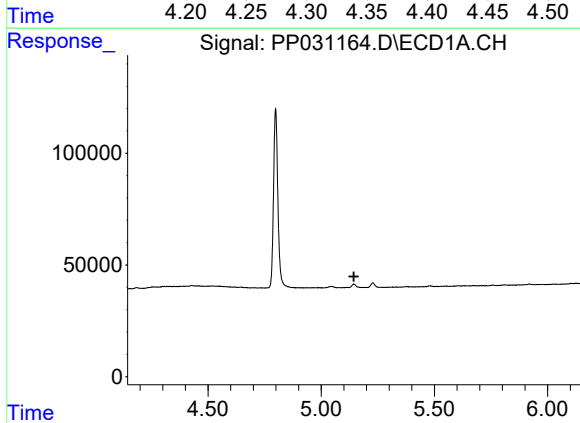
R.T.: 0.000 min  
 Exp R.T. : 5.047 min  
 Response: 0  
 Conc: N.D.

Instrument :  
 ECD\_P  
 ClientSampleId :



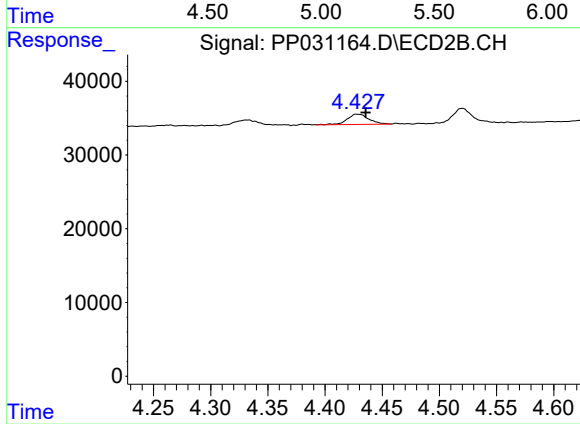
#8 AR-1221-1

R.T.: 4.334 min  
 Delta R.T.: -0.002 min  
 Response: 12399  
 Conc: 22.01 ng/ml



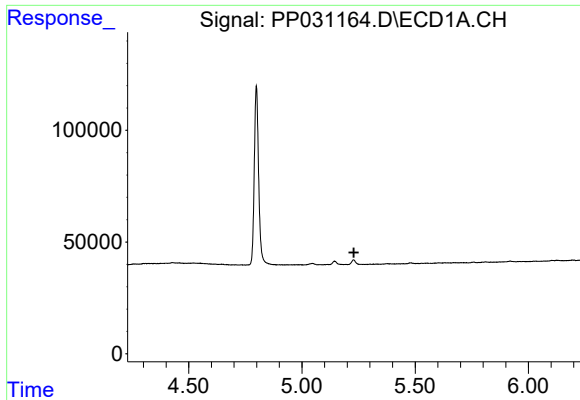
#9 AR-1221-2

R.T.: 0.000 min  
 Exp R.T. : 5.144 min  
 Response: 0  
 Conc: N.D.



#9 AR-1221-2

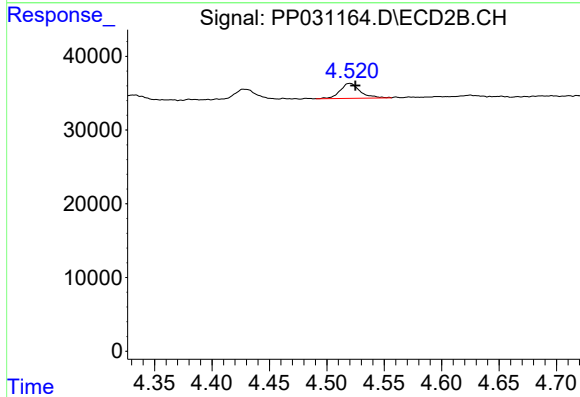
R.T.: 4.427 min  
 Delta R.T.: -0.008 min  
 Response: 18270  
 Conc: 44.04 ng/ml



#10 AR-1221-3

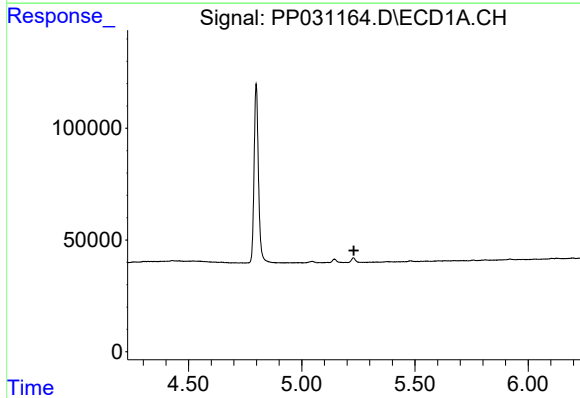
R.T.: 0.000 min  
 Exp R.T. : 5.230 min  
 Response: 0  
 Conc: N.D.

Instrument :  
 ECD\_P  
 ClientSampleId :



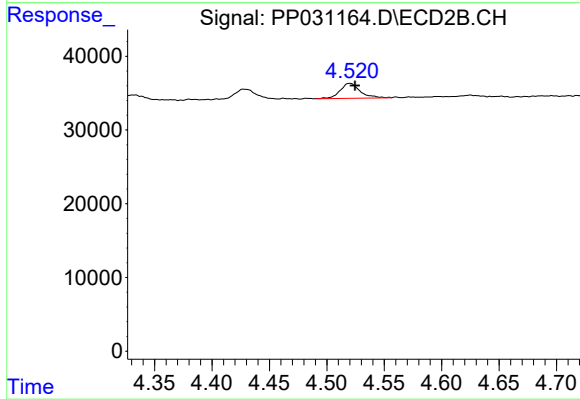
#10 AR-1221-3

R.T.: 4.520 min  
 Delta R.T.: -0.005 min  
 Response: 24686  
 Conc: 18.82 ng/ml



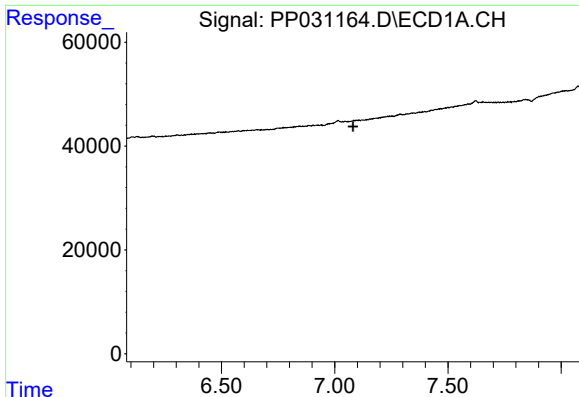
#11 AR-1232-1

R.T.: 0.000 min  
 Exp R.T. : 5.230 min  
 Response: 0  
 Conc: N.D.



#11 AR-1232-1

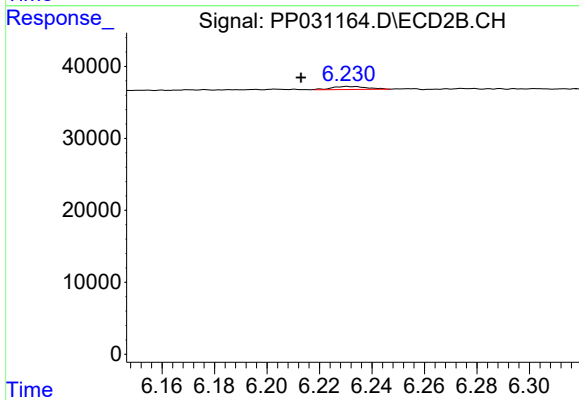
R.T.: 4.520 min  
 Delta R.T.: -0.004 min  
 Response: 24686  
 Conc: 20.61 ng/ml



#20 AR-1242-5

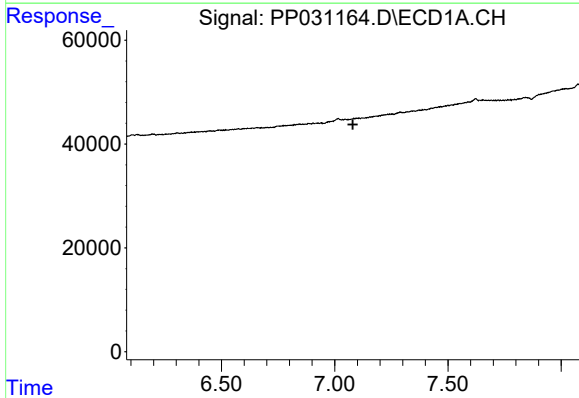
R.T.: 0.000 min  
 Exp R.T. : 7.081 min  
 Response: 0  
 Conc: N.D.

Instrument :  
 ECD\_P  
 ClientSampled :



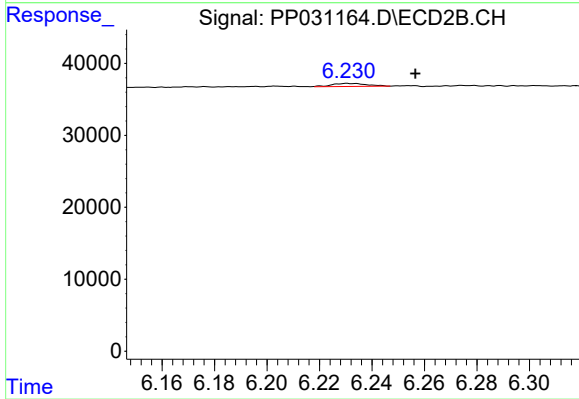
#20 AR-1242-5

R.T.: 6.231 min  
 Delta R.T.: 0.017 min  
 Response: 3815  
 Conc: 3.83 ng/ml



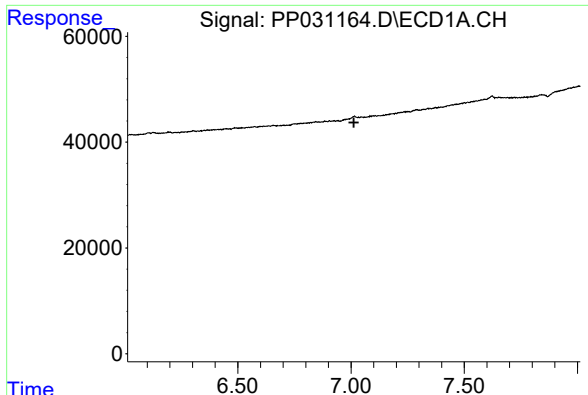
#25 AR-1248-5

R.T.: 0.000 min  
 Exp R.T. : 7.080 min  
 Response: 0  
 Conc: N.D.



#25 AR-1248-5

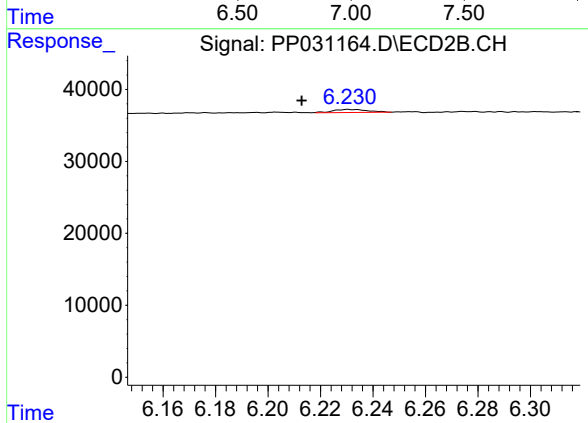
R.T.: 6.231 min  
 Delta R.T.: -0.026 min  
 Response: 3815  
 Conc: 3.02 ng/ml



#26 AR-1254-1

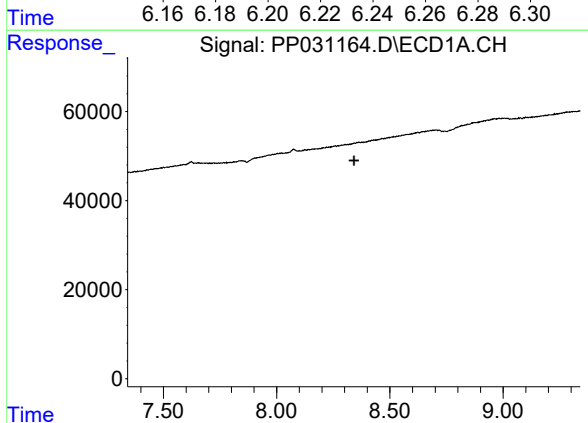
R.T.: 0.000 min  
 Exp R.T. : 7.013 min  
 Response: 0  
 Conc: N.D.

Instrument :  
 ECD\_P  
 ClientSampled :



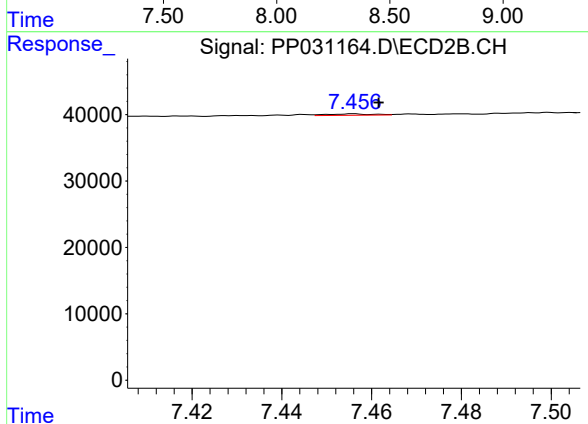
#26 AR-1254-1

R.T.: 6.231 min  
 Delta R.T.: 0.018 min  
 Response: 3815  
 Conc: 1.94 ng/ml



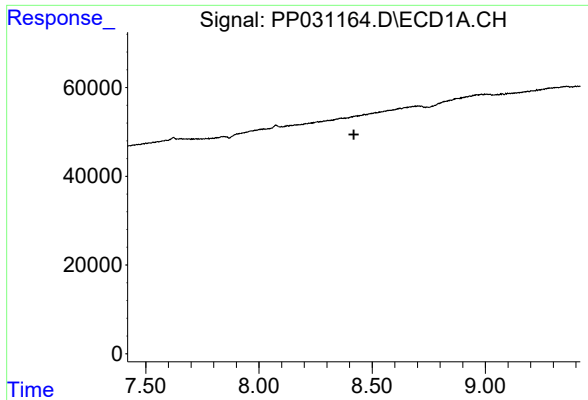
#30 AR-1254-5

R.T.: 0.000 min  
 Exp R.T. : 8.341 min  
 Response: 0  
 Conc: N.D.



#30 AR-1254-5

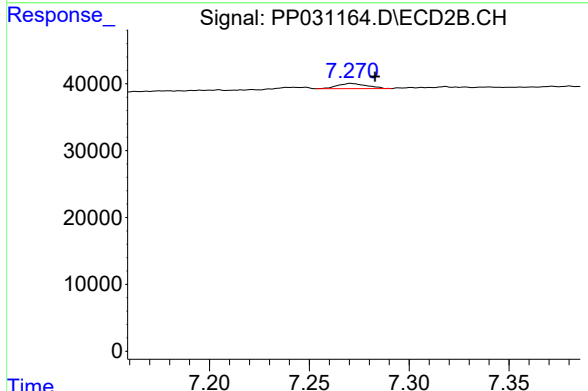
R.T.: 7.456 min  
 Delta R.T.: -0.006 min  
 Response: 1449  
 Conc: 0.66 ng/ml



#33 AR-1260-3

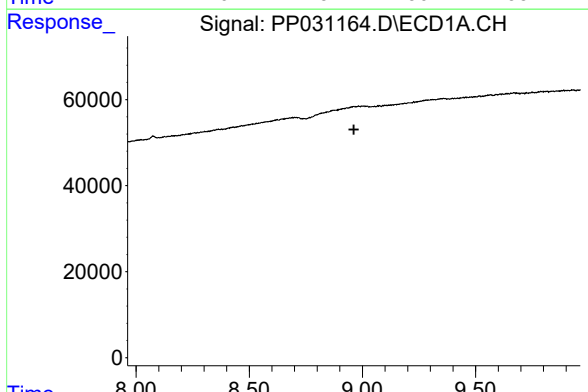
R.T.: 0.000 min  
 Exp R.T. : 8.419 min  
 Response: 0  
 Conc: N.D.

Instrument :  
 ECD\_P  
 ClientSampled :



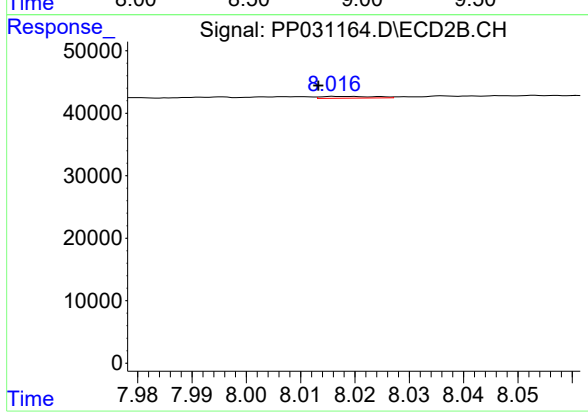
#33 AR-1260-3

R.T.: 7.271 min  
 Delta R.T.: -0.012 min  
 Response: 8150  
 Conc: 3.58 ng/ml



#35 AR-1260-5

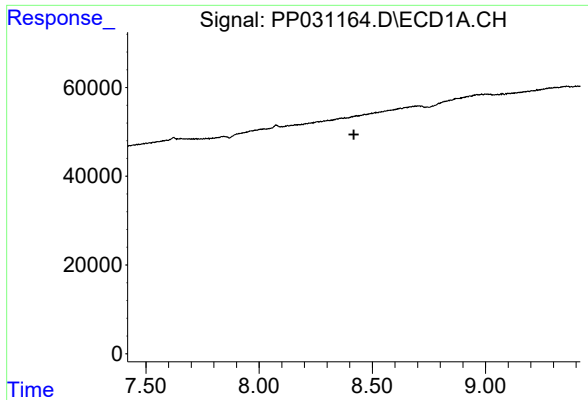
R.T.: 0.000 min  
 Exp R.T. : 8.962 min  
 Response: 0  
 Conc: N.D.



#35 AR-1260-5

R.T.: 8.016 min  
 Delta R.T.: 0.003 min  
 Response: 1984  
 Conc: 0.44 ng/ml

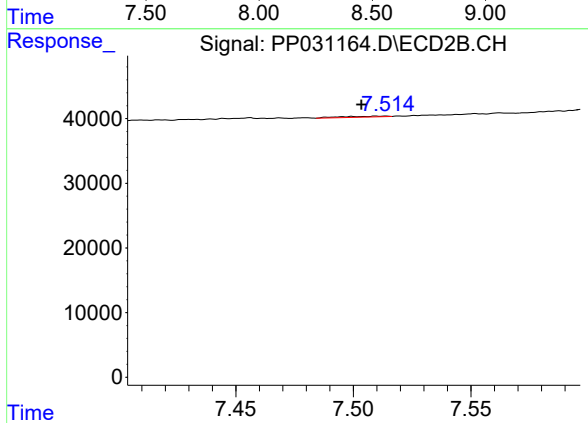




#36 AR-1262-1

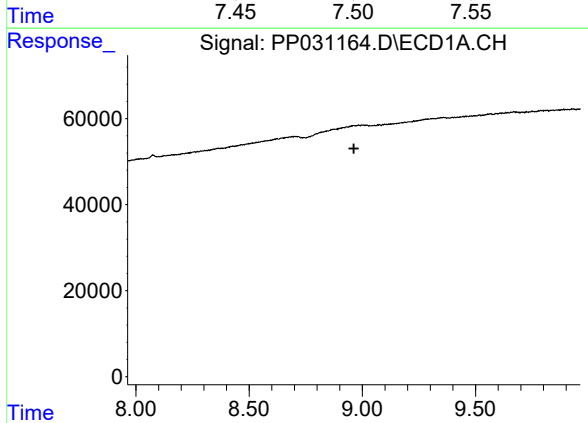
R.T.: 0.000 min  
 Exp R.T. : 8.419 min  
 Response: 0  
 Conc: N.D.

Instrument :  
 ECD\_P  
 ClientSampled :



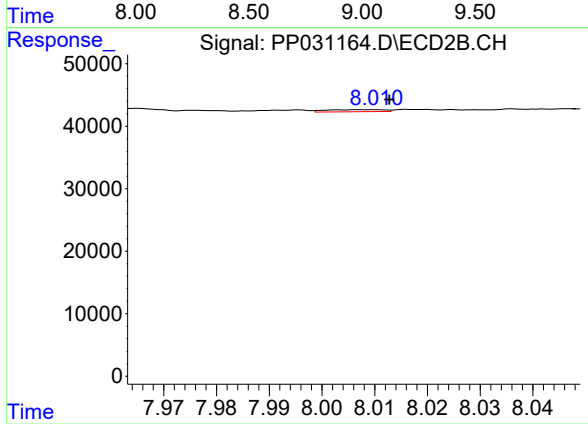
#36 AR-1262-1

R.T.: 7.514 min  
 Delta R.T.: 0.010 min  
 Response: 1706  
 Conc: 0.73 ng/ml



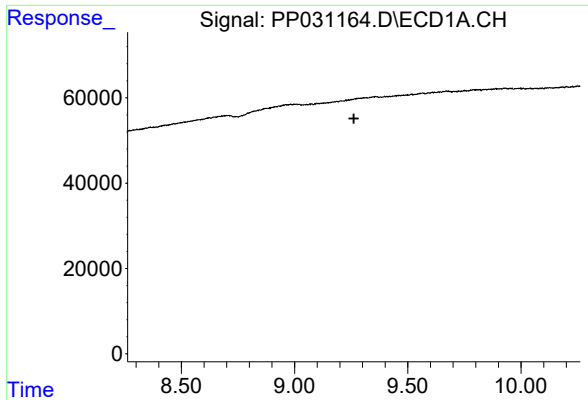
#37 AR-1262-2

R.T.: 0.000 min  
 Exp R.T. : 8.963 min  
 Response: 0  
 Conc: N.D.



#37 AR-1262-2

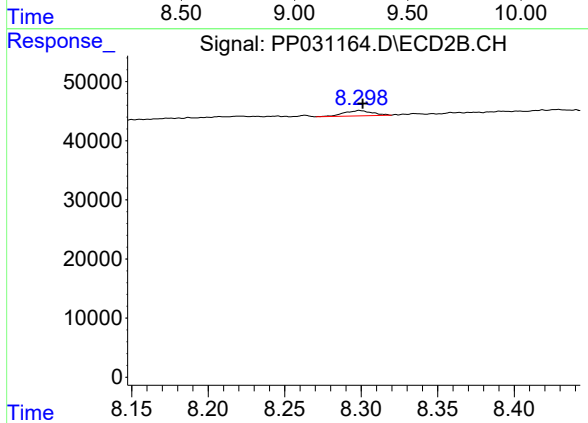
R.T.: 8.010 min  
 Delta R.T.: -0.003 min  
 Response: 2510  
 Conc: 0.61 ng/ml



#38 AR-1262-3

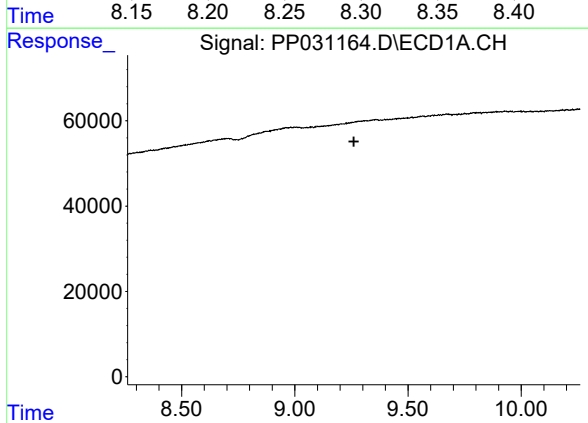
R.T.: 0.000 min  
 Exp R.T. : 9.262 min  
 Response: 0  
 Conc: N.D.

Instrument :  
 ECD\_P  
 ClientSampleId :



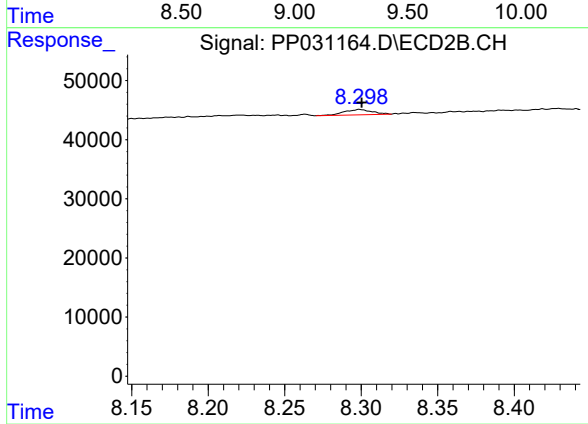
#38 AR-1262-3

R.T.: 8.299 min  
 Delta R.T.: -0.002 min  
 Response: 11353  
 Conc: 6.70 ng/ml



#41 AR-1268-1

R.T.: 0.000 min  
 Exp R.T. : 9.261 min  
 Response: 0  
 Conc: N.D.



#41 AR-1268-1

R.T.: 8.299 min  
 Delta R.T.: -0.002 min  
 Response: 11353  
 Conc: 2.32 ng/ml