

Data Path : Z:\pestpcbsrv\HPCHEM1\ECD\_P\Data\PP110420\  
 Data File : PP031092.D  
 Signal(s) : Signal #1: ECD1A.CH Signal #2: ECD2B.CH  
 Acq On : 04 Nov 2020 11:12  
 Operator : DD\AJ  
 Sample : L4214-01  
 Misc : AR1248 LOD 25 PPB  
 ALS Vial : 9 Sample Multiplier: 1

Instrument :  
 ECD\_P  
 ClientSampleId :  
 LOD-MDL-SOIL-01-QT4-2020

Integration File signal 1: autoint1.e  
 Integration File signal 2: autoint2.e  
 Quant Time: Nov 05 05:00:04 2020  
 Quant Method : Z:\pestpcbsrv\HPCHEM1\ECD\_P\methods\PP110420.M  
 Quant Title : GC EXTRACTABLES  
 QLast Update : Wed Nov 04 08:24:38 2020  
 Response via : Initial Calibration  
 Integrator: ChemStation 6890 Scale Mode: Small noise peaks clipped

Volume Inj. : 2 µl  
 Signal #1 Phase : ZB-MR2 Signal #2 Phase: ZB-MR2  
 Signal #1 Info : 30Mx0.32mmx 0.50µ Signal #2 Info : 30M x 0.32mm x 0.25µm

Compound	RT#1	RT#2	Resp#1	Resp#2	ng/ml	ng/ml
-----						
System Monitoring Compounds						
1) SA Tetrachlo...	4.800	4.075	895559	862353	13.408	12.974
2) SA Decachlor...	10.680	9.398	577851	632596	14.452	15.150
Target Compounds						
21) L5 AR-1248-1	6.106	5.336	25888	17825	26.846	19.264 #
22) L5 AR-1248-2	6.399	5.600	23573	23280	20.381	21.123
23) L5 AR-1248-3	6.614	5.644	34313	28026	24.117	23.155
24) L5 AR-1248-4	7.039	5.829	38364	29599	25.172	20.056
25) L5 AR-1248-5	7.079	6.253	36468	35958	24.038	28.472
-----						

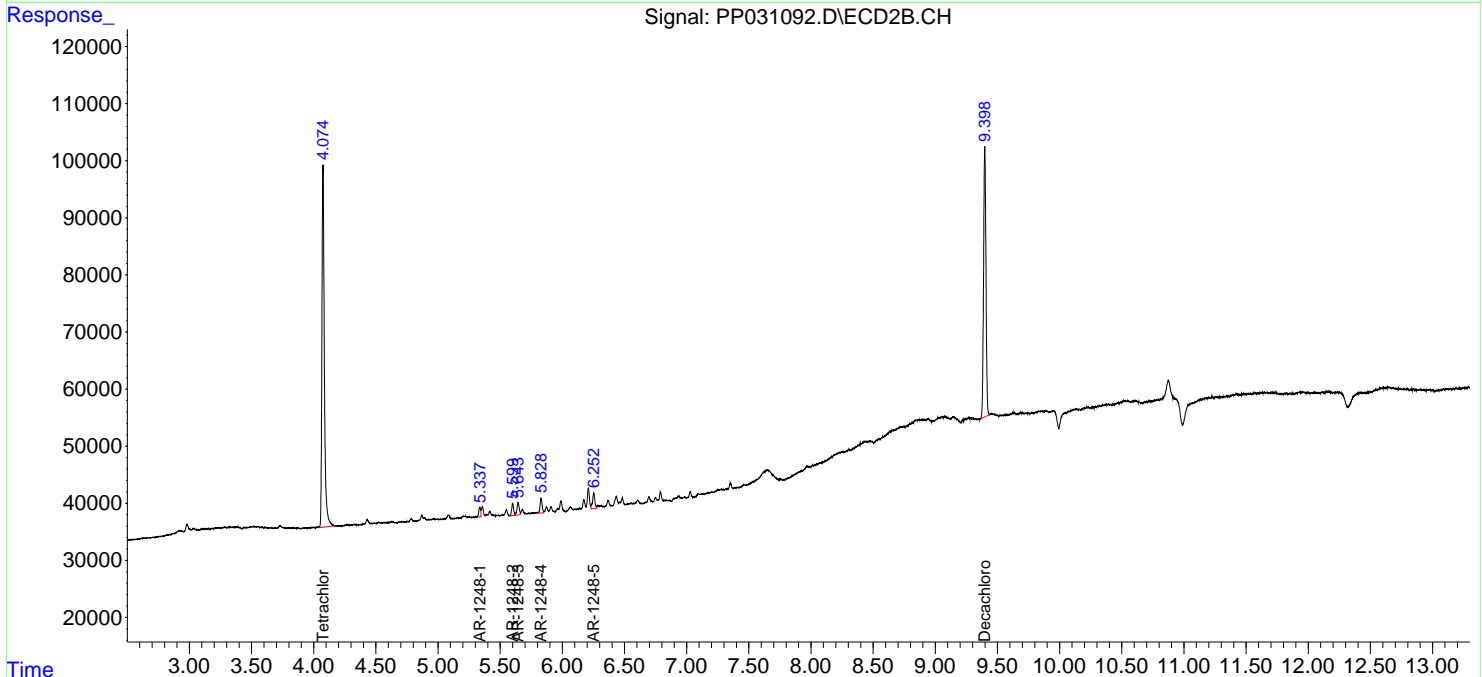
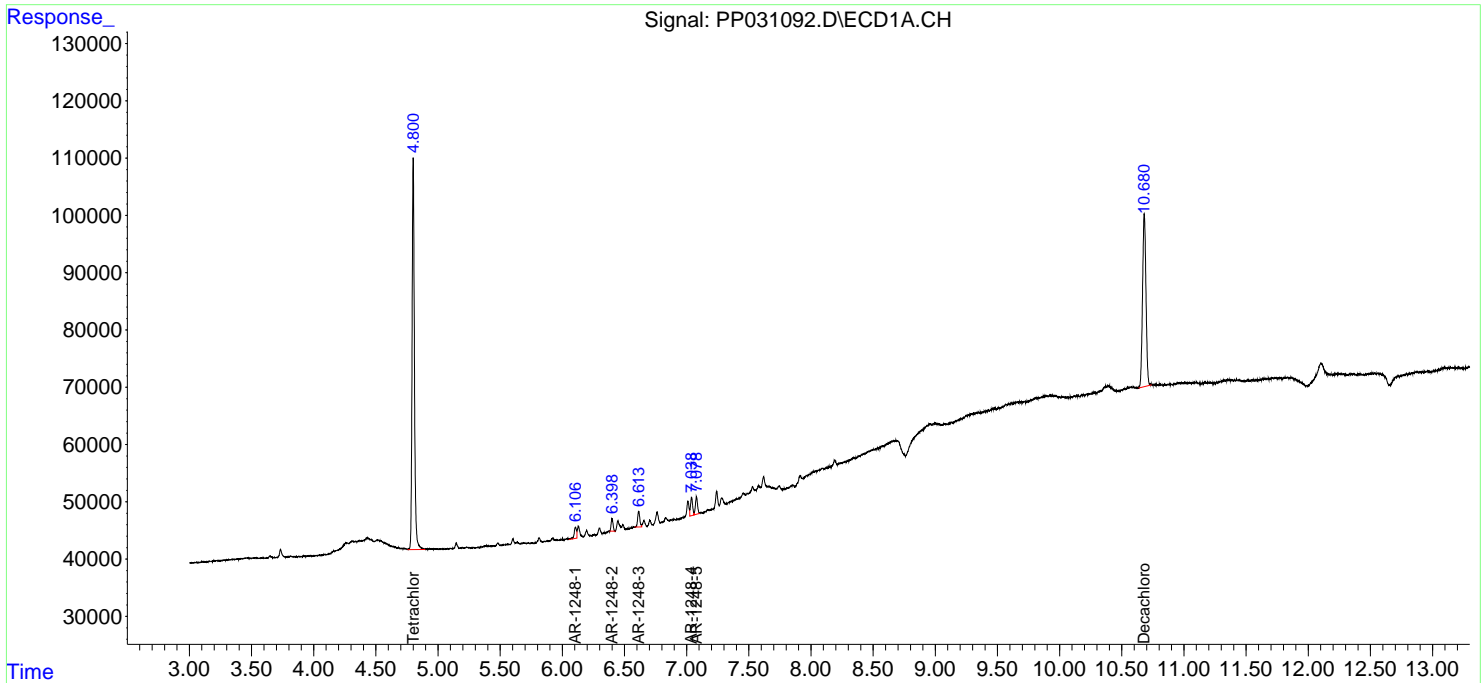
(f)=RT Delta > 1/2 Window (#)=Amounts differ by > 25% (m)=manual int.

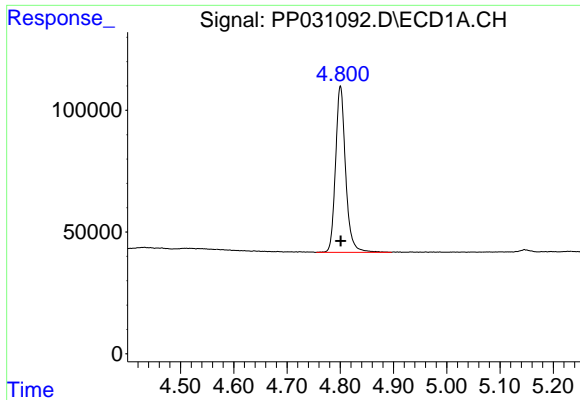
Data Path : Z:\pestpcbsrv\HPCHEM1\ECD\_P\Data\PP110420\  
 Data File : PP031092.D  
 Signal(s) : Signal #1: ECD1A.CH Signal #2: ECD2B.CH  
 Acq On : 04 Nov 2020 11:12  
 Operator : DD\AJ  
 Sample : L4214-01  
 Misc : AR1248 LOD 25 PPB  
 ALS Vial : 9 Sample Multiplier: 1

**Instrument :**  
 ECD\_P  
**ClientSampled :**  
 LOD-MDL-SOIL-01-QT4-2020

Integration File signal 1: autoint1.e  
 Integration File signal 2: autoint2.e  
 Quant Time: Nov 05 05:00:04 2020  
 Quant Method : Z:\pestpcbsrv\HPCHEM1\ECD\_P\methods\PP110420.M  
 Quant Title : GC EXTRACTABLES  
 QLast Update : Wed Nov 04 08:24:38 2020  
 Response via : Initial Calibration  
 Integrator: ChemStation 6890 Scale Mode: Small noise peaks clipped

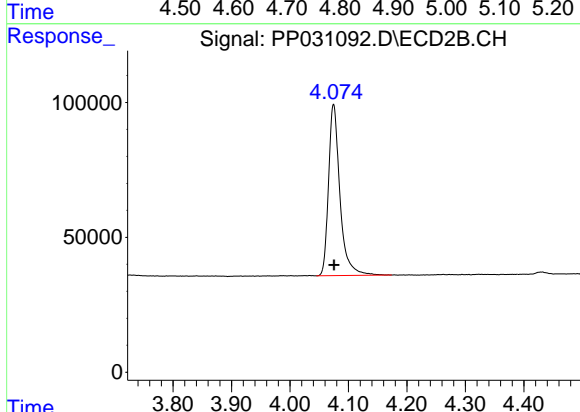
Volume Inj. : 2 µl  
 Signal #1 Phase : ZB-MR1 Signal #2 Phase: ZB-MR2  
 Signal #1 Info : 30Mx0.32mmx 0.50µ Signal #2 Info : 30M x 0.32mm x 0.25µm



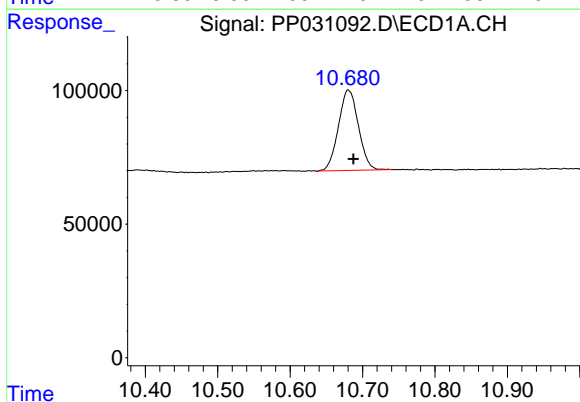


#1 Tetrachloro-m-xylene  
 R.T.: 4.800 min  
 Delta R.T.: 0.000 min  
 Response: 895559  
 Conc: 13.41 ng/ml

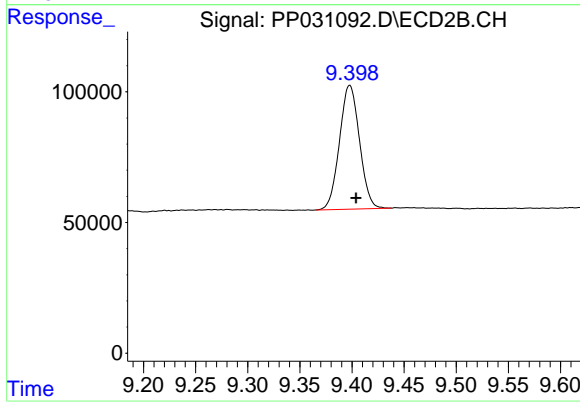
**Instrument :**  
 ECD\_P  
**ClientSampleId :**  
 LOD-MDL-SOIL-01-QT4-2020



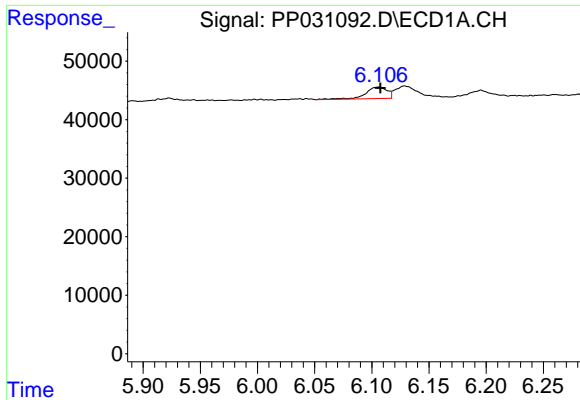
#1 Tetrachloro-m-xylene  
 R.T.: 4.075 min  
 Delta R.T.: 0.000 min  
 Response: 862353  
 Conc: 12.97 ng/ml



#2 Decachlorobiphenyl  
 R.T.: 10.680 min  
 Delta R.T.: -0.007 min  
 Response: 577851  
 Conc: 14.45 ng/ml



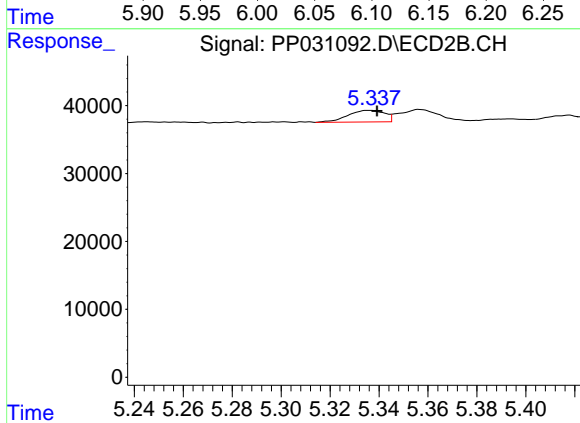
#2 Decachlorobiphenyl  
 R.T.: 9.398 min  
 Delta R.T.: -0.006 min  
 Response: 632596  
 Conc: 15.15 ng/ml



#21 AR-1248-1

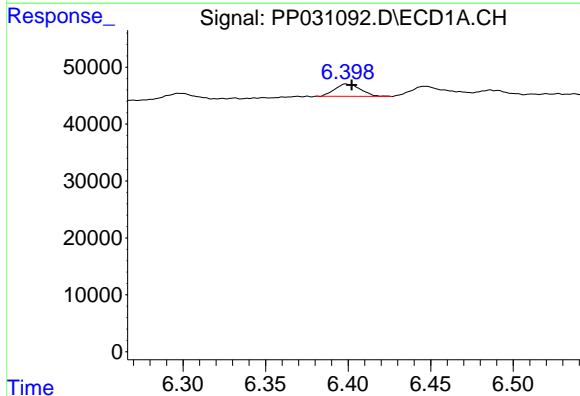
R.T.: 6.106 min  
 Delta R.T.: -0.002 min  
 Response: 25888  
 Conc: 26.85 ng/ml

Instrument :  
 ECD\_P  
 ClientSampleId :  
 LOD-MDL-SOIL-01-QT4-2020



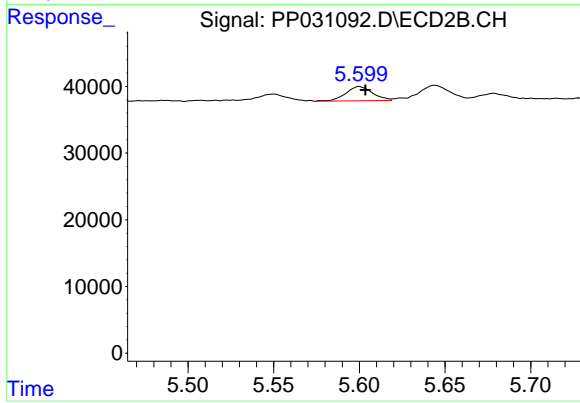
#21 AR-1248-1

R.T.: 5.336 min  
 Delta R.T.: -0.003 min  
 Response: 17825  
 Conc: 19.26 ng/ml



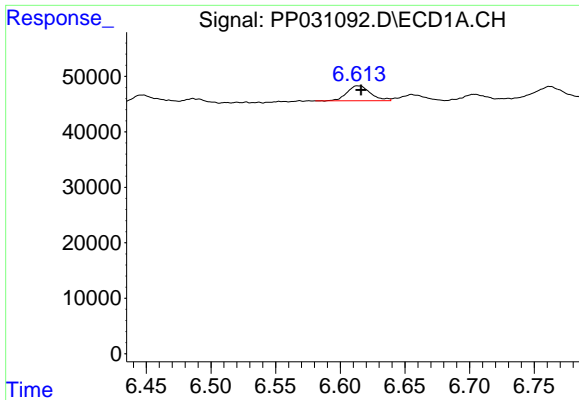
#22 AR-1248-2

R.T.: 6.399 min  
 Delta R.T.: -0.003 min  
 Response: 23573  
 Conc: 20.38 ng/ml



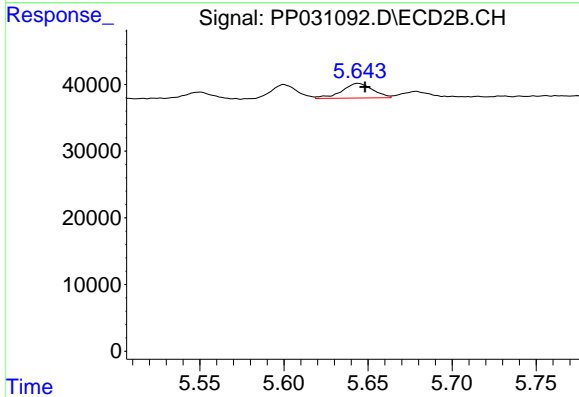
#22 AR-1248-2

R.T.: 5.600 min  
 Delta R.T.: -0.004 min  
 Response: 23280  
 Conc: 21.12 ng/ml

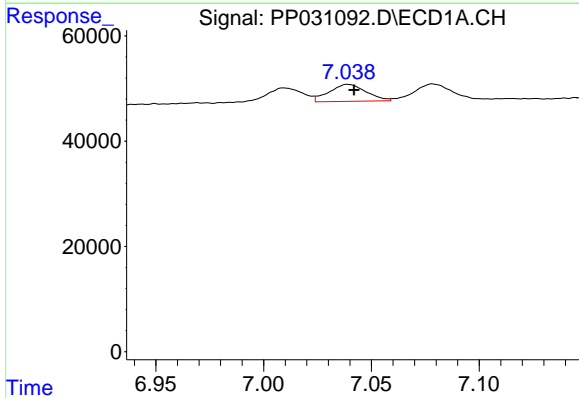


#23 AR-1248-3  
 R.T.: 6.614 min  
 Delta R.T.: -0.002 min  
 Response: 34313  
 Conc: 24.12 ng/ml

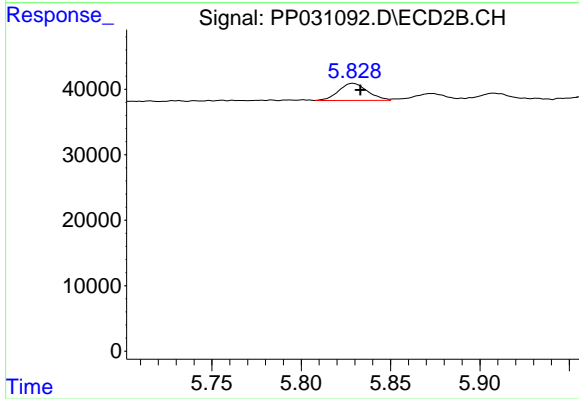
Instrument :  
 ECD\_P  
 ClientSampleId :  
 LOD-MDL-SOIL-01-QT4-2020



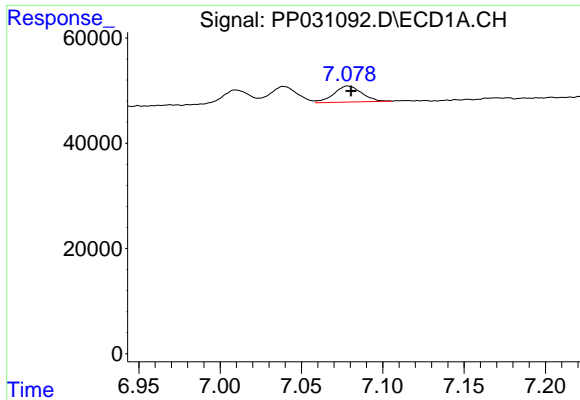
#23 AR-1248-3  
 R.T.: 5.644 min  
 Delta R.T.: -0.004 min  
 Response: 28026  
 Conc: 23.15 ng/ml



#24 AR-1248-4  
 R.T.: 7.039 min  
 Delta R.T.: -0.003 min  
 Response: 38364  
 Conc: 25.17 ng/ml



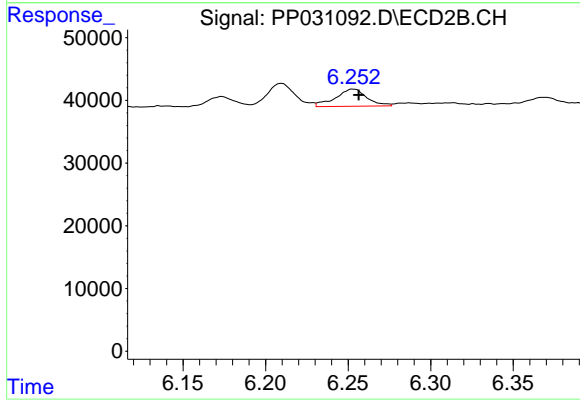
#24 AR-1248-4  
 R.T.: 5.829 min  
 Delta R.T.: -0.004 min  
 Response: 29599  
 Conc: 20.06 ng/ml



#25 AR-1248-5

R.T.: 7.079 min  
Delta R.T.: -0.002 min  
Response: 36468  
Conc: 24.04 ng/ml

Instrument :  
ECD\_P  
ClientSampleId :  
LOD-MDL-SOIL-01-QT4-2020



#25 AR-1248-5

R.T.: 6.253 min  
Delta R.T.: -0.004 min  
Response: 35958  
Conc: 28.47 ng/ml