

Data Path : Z:\pestpcbsrv\HPCHEM1\ECD_P\Data\PP110420\
 Data File : PP031137.D
 Signal(s) : Signal #1: ECD1A.CH Signal #2: ECD2B.CH
 Acq On : 04 Nov 2020 23:58
 Operator : DD\AJ
 Sample : L4214-01
 Misc : AR1262 LOD 40 PPB
 ALS Vial : 46 Sample Multiplier: 1

Instrument :
 ECD_P
Client Sampled :
 LOD-MDL-SOIL-01-QT4-2020

Manual Integrations
APPROVED
 Ankita
 11/5/2020 11:16:35 AM

Integration File signal 1: autoint1.e
 Integration File signal 2: autoint2.e
 Quant Time: Nov 05 05:11:43 2020
 Quant Method : Z:\pestpcbsrv\HPCHEM1\ECD_P\methods\PP110420.M
 Quant Title : GC EXTRACTABLES
 QLast Update : Wed Nov 04 08:24:38 2020
 Response via : Initial Calibration
 Integrator: ChemStation 6890 Scale Mode: Small noise peaks clipped

Volume Inj. : 2 µl
 Signal #1 Phase : ZB-MR1 Signal #2 Phase: ZB-MR2
 Signal #1 Info : 30Mx0.32mmx 0.50µ Signal #2 Info : 30M x 0.32mm x 0.25µm

Compound	RT#1	RT#2	Resp#1	Resp#2	ng/ml	ng/ml

System Monitoring Compounds						
1) SA Tetrachlo...	4.800	4.074	1036597	991200	15.520	14.912
2) SA Decachlor...	10.680	9.394	655238	730086	16.388	17.485
Target Compounds						
36) L8 AR-1262-1	8.415	7.498	86087	112538	42.846	48.451
37) L8 AR-1262-2	8.958	8.007	171907	195250	47.297	47.096
38) L8 AR-1262-3	9.257	8.294	115526	71130	44.690m	41.954
39) L8 AR-1262-4	9.345	8.358	92539	140096	44.947m	44.117
40) L8 AR-1262-5	9.972	8.854	60282	68241	42.557m	42.458

(f)=RT Delta > 1/2 Window (#)=Amounts differ by > 25% (m)=manual int.

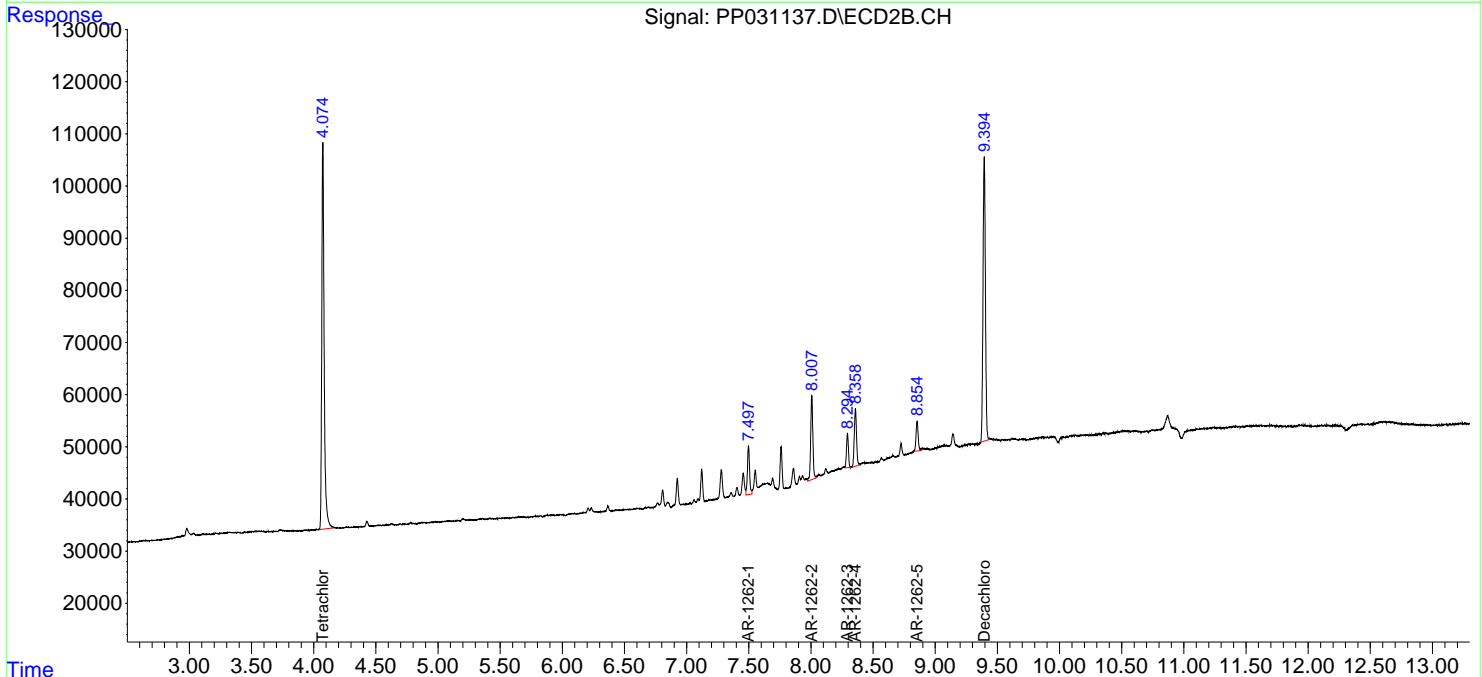
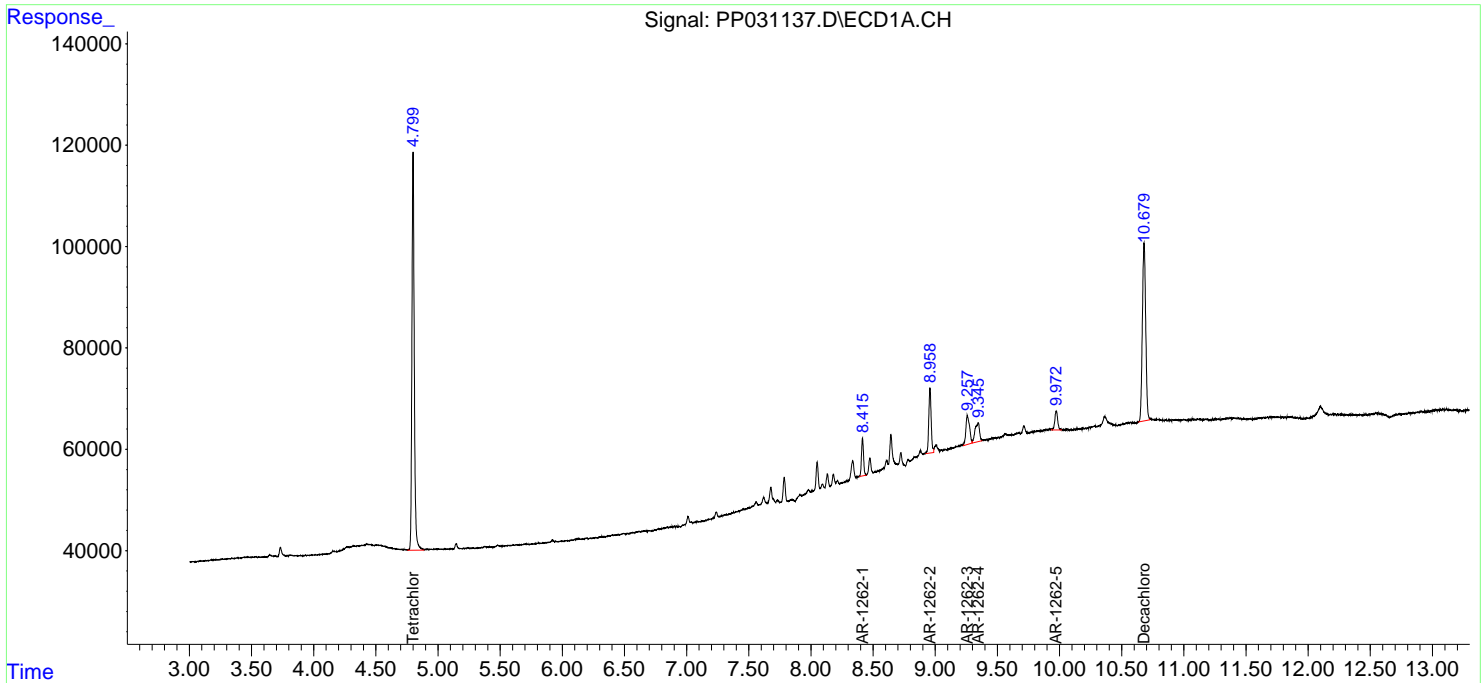
Data Path : Z:\pestpcbsrv\HPCHEM1\ECD_P\Data\PP110420\
 Data File : PP031137.D
 Signal(s) : Signal #1: ECD1A.CH Signal #2: ECD2B.CH
 Acq On : 04 Nov 2020 23:58
 Operator : DD\AJ
 Sample : L4214-01
 Misc : AR1262 LOD 40 PPB
 ALS Vial : 46 Sample Multiplier: 1

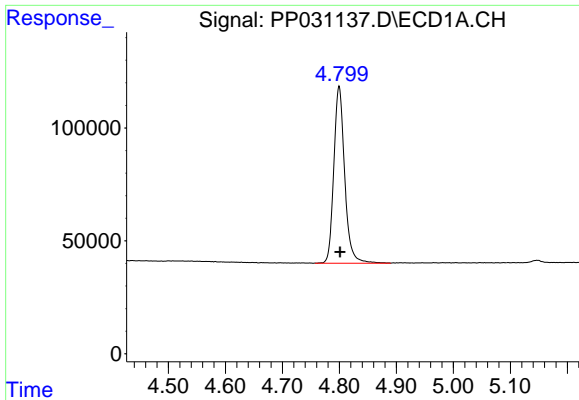
Instrument :
 ECD_P
Client Sampled :
 LOD-MDL-SOIL-01-QT4-2020

Manual Integrations
APPROVED
 Ankita
 11/5/2020 11:16:35 AM

Integration File signal 1: autoint1.e
 Integration File signal 2: autoint2.e
 Quant Time: Nov 05 05:11:43 2020
 Quant Method : Z:\pestpcbsrv\HPCHEM1\ECD_P\methods\PP110420.M
 Quant Title : GC EXTRACTABLES
 QLast Update : Wed Nov 04 08:24:38 2020
 Response via : Initial Calibration
 Integrator: ChemStation 6890 Scale Mode: Small noise peaks clipped

Volume Inj. : 2 µl
 Signal #1 Phase : ZB-MR1 Signal #2 Phase: ZB-MR2
 Signal #1 Info : 30Mx0.32mmx 0.50µ Signal #2 Info : 30M x 0.32mm x 0.25µm

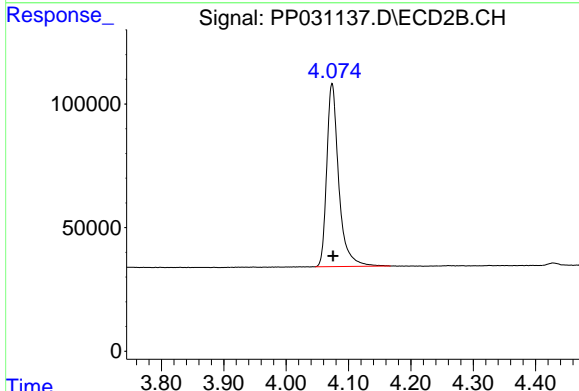




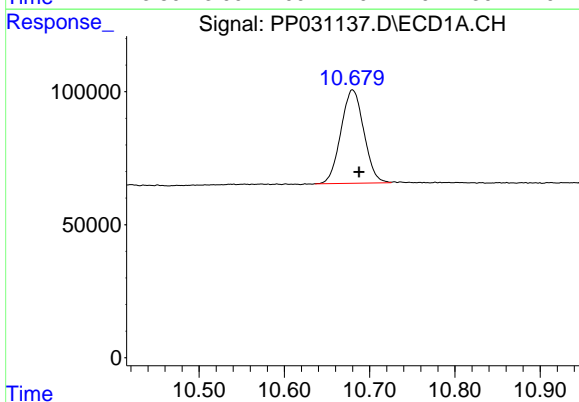
#1 Tetrachloro-m-xylene
 R.T.: 4.800 min
 Delta R.T.: -0.001 min
 Response: 1036597
 Conc: 15.52 ng/ml

Instrument :
 ECD_P
 ClientSampled :
 LOD-MDL-SOIL-01-QT4-2020

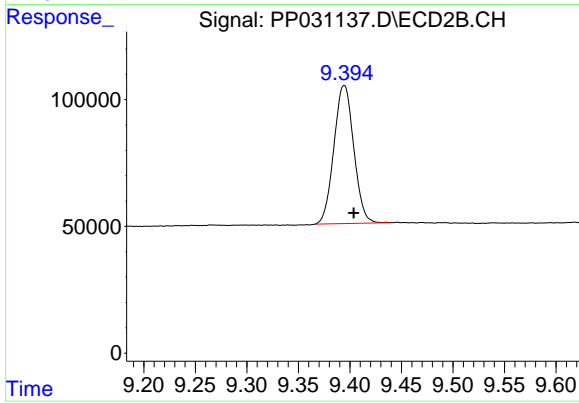
Manual Integrations
 APPROVED
 Ankita
 11/5/2020 11:16:35 AM



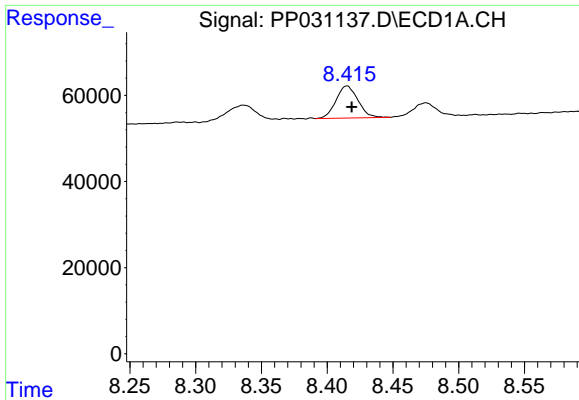
#1 Tetrachloro-m-xylene
 R.T.: 4.074 min
 Delta R.T.: -0.002 min
 Response: 991200
 Conc: 14.91 ng/ml



#2 Decachlorobiphenyl
 R.T.: 10.680 min
 Delta R.T.: -0.008 min
 Response: 655238
 Conc: 16.39 ng/ml



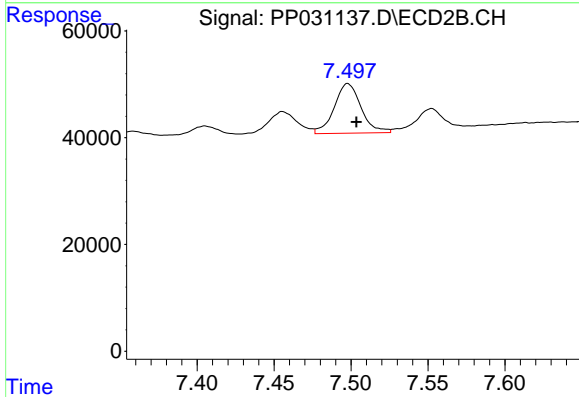
#2 Decachlorobiphenyl
 R.T.: 9.394 min
 Delta R.T.: -0.009 min
 Response: 730086
 Conc: 17.48 ng/ml



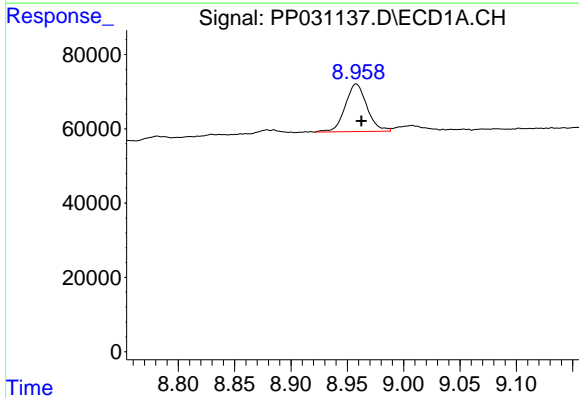
#36 AR-1262-1
 R.T.: 8.415 min
 Delta R.T.: -0.004 min
 Response: 86087
 Conc: 42.85 ng/ml

Instrument :
 ECD_P
ClientSampleId :
 LOD-MDL-SOIL-01-QT4-2020

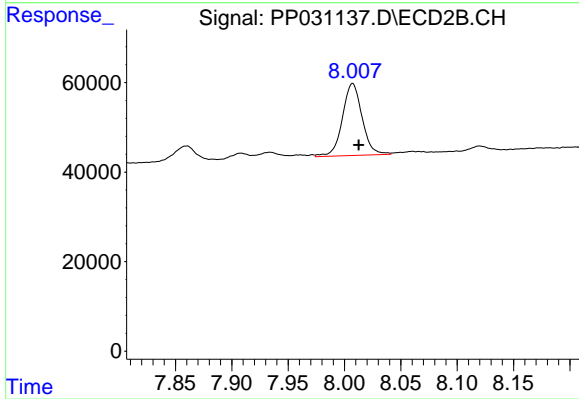
Manual Integrations
APPROVED
 Ankita
 11/5/2020 11:16:35 AM



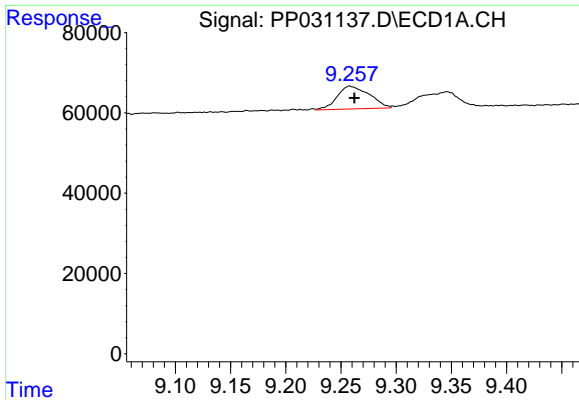
#36 AR-1262-1
 R.T.: 7.498 min
 Delta R.T.: -0.006 min
 Response: 112538
 Conc: 48.45 ng/ml



#37 AR-1262-2
 R.T.: 8.958 min
 Delta R.T.: -0.005 min
 Response: 171907
 Conc: 47.30 ng/ml



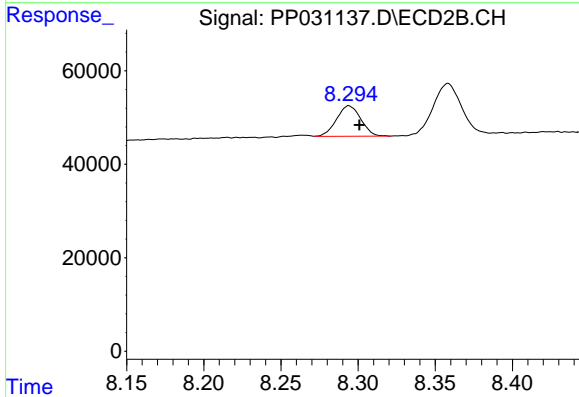
#37 AR-1262-2
 R.T.: 8.007 min
 Delta R.T.: -0.005 min
 Response: 195250
 Conc: 47.10 ng/ml



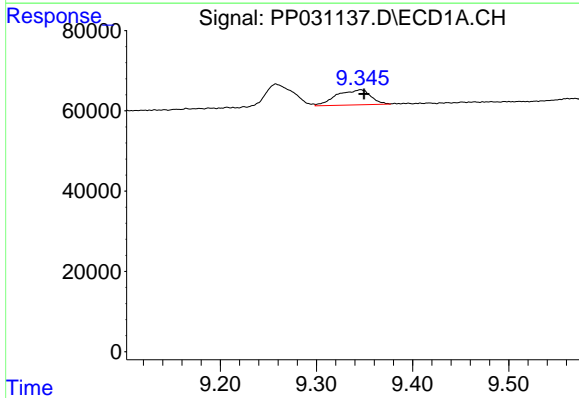
#38 AR-1262-3
 R.T.: 9.257 min
 Delta R.T.: -0.005 min
 Response: 115526
 Conc: 44.69 ng/ml m

Instrument :
 ECD_P
ClientSampled :
 LOD-MDL-SOIL-01-QT4-2020

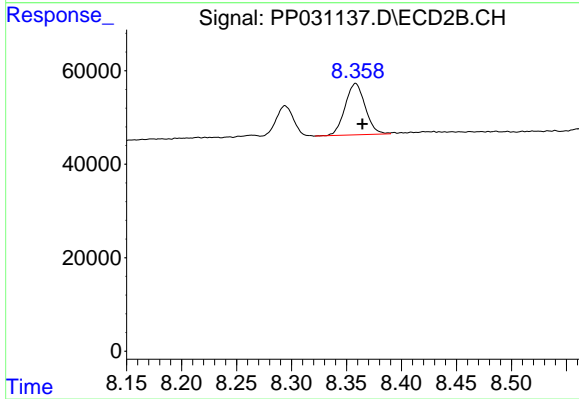
Manual Integrations
APPROVED
 Ankita
 11/5/2020 11:16:35 AM



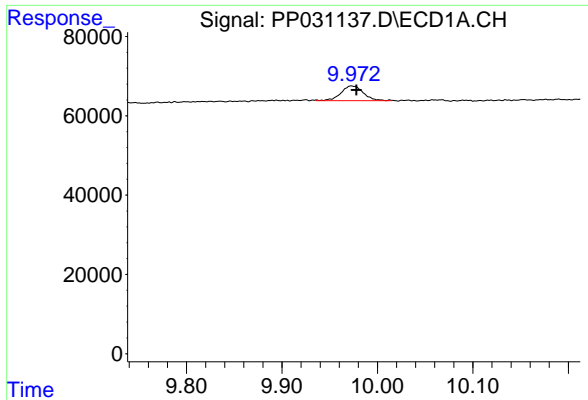
#38 AR-1262-3
 R.T.: 8.294 min
 Delta R.T.: -0.007 min
 Response: 71130
 Conc: 41.95 ng/ml



#39 AR-1262-4
 R.T.: 9.345 min
 Delta R.T.: -0.004 min
 Response: 92539
 Conc: 44.95 ng/ml m



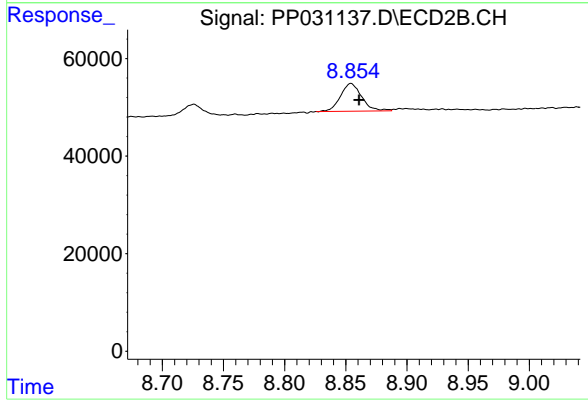
#39 AR-1262-4
 R.T.: 8.358 min
 Delta R.T.: -0.006 min
 Response: 140096
 Conc: 44.12 ng/ml



#40 AR-1262-5
 R.T.: 9.972 min
 Delta R.T.: -0.005 min
 Response: 60282
 Conc: 42.56 ng/ml m

Instrument :
 ECD_P
ClientSampled :
 LOD-MDL-SOIL-01-QT4-2020

Manual Integrations
APPROVED
 Ankita
 11/5/2020 11:16:35 AM



#40 AR-1262-5
 R.T.: 8.854 min
 Delta R.T.: -0.007 min
 Response: 68241
 Conc: 42.46 ng/ml