

Data Path : Z:\pestpcbsrv\HPCHEM1\ECD_P\Data\PP110520\
 Data File : PP031181.D
 Signal(s) : Signal #1: ECD1A.CH Signal #2: ECD2B.CH
 Acq On : 05 Nov 2020 13:02
 Operator : DD\AJ
 Sample : I.BLK
 Misc :
 ALS Vial : 2 Sample Multiplier: 1

Instrument :
 ECD_P
 ClientSampleId :

Integration File signal 1: autoint1.e
 Integration File signal 2: autoint2.e
 Quant Time: Nov 05 14:22:43 2020
 Quant Method : Z:\pestpcbsrv\HPCHEM1\ECD_P\methods\PP110420.M
 Quant Title : GC EXTRACTABLES
 QLast Update : Thu Nov 05 13:03:18 2020
 Response via : Initial Calibration
 Integrator: ChemStation 6890 Scale Mode: Small noise peaks clipped

Volume Inj. : 2 µl
 Signal #1 Phase : ZB-MR2 Signal #2 Phase: ZB-MR2
 Signal #1 Info : 30Mx0.32mmx 0.50µ Signal #2 Info : 30M x 0.32mm x 0.25µm

Compound	RT#1	RT#2	Resp#1	Resp#2	ng/ml	ng/ml

System Monitoring Compounds						
1) SA Tetrachlo...	4.798	4.073	1112865	1089467	16.662	16.391
2) SA Decachlor...	10.679	9.395	697264	781944	17.439	18.726
Target Compounds						
9) L2 AR-1221-2	0.000	4.428	0	13765	N.D.	32.149 #
20) L4 AR-1242-5	0.000	6.234f	0	10282	N.D.	10.329 #
25) L5 AR-1248-5	0.000	6.234f	0	10282	N.D.	8.142 #
26) L6 AR-1254-1	0.000	6.234f	0	10282	N.D.	5.228 #
30) L6 AR-1254-5	0.000	7.491f	0	1213	N.D.	0.554 #
36) L8 AR-1262-1	0.000	7.491	0	1213	N.D.	0.522 #
38) L8 AR-1262-3	0.000	8.299	0	4005	N.D.	2.362 #
41) L9 AR-1268-1	0.000	8.299	0	4005	N.D.	0.818 #
45) L9 AR-1268-5	0.000	9.142	0	5853	N.D.	0.436 #

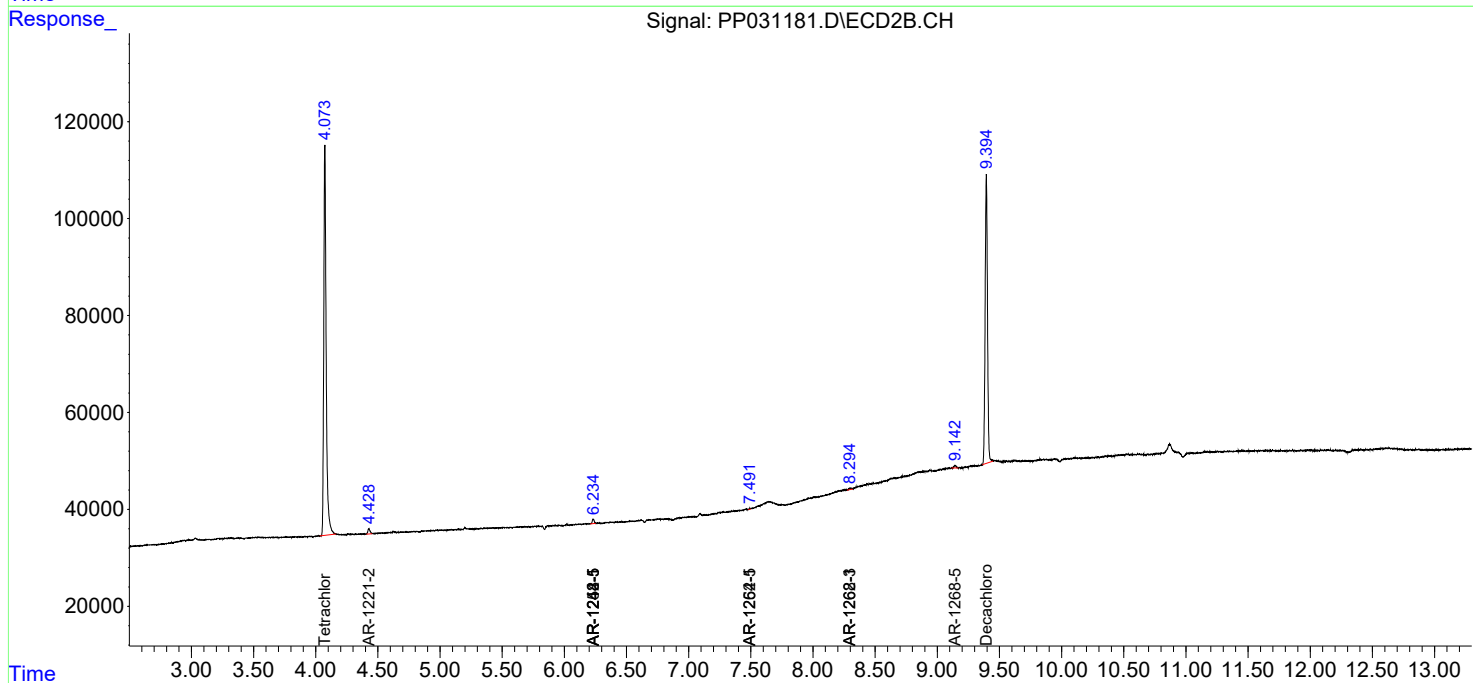
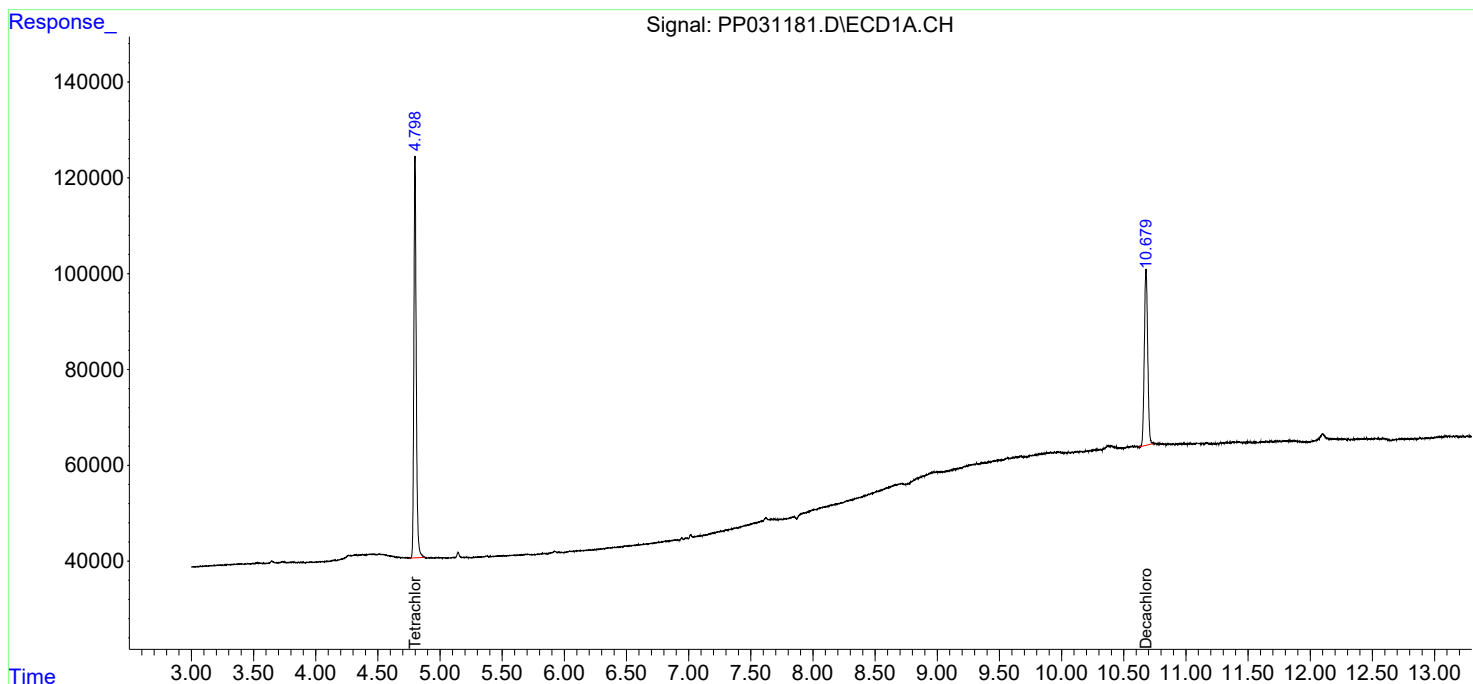
(f)=RT Delta > 1/2 Window (#)=Amounts differ by > 25% (m)=manual int.

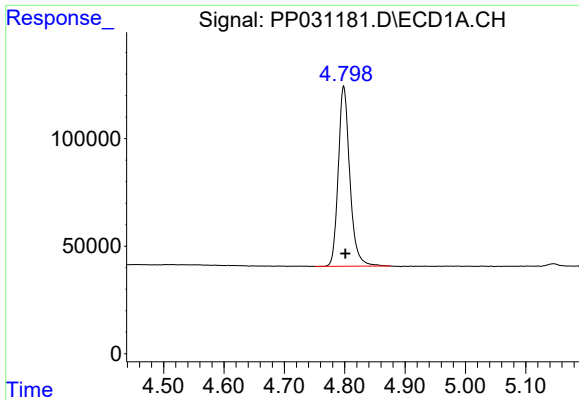
Data Path : Z:\pestpcbsrv\HPCHEM1\ECD_P\Data\PP110520\
 Data File : PP031181.D
 Signal(s) : Signal #1: ECD1A.CH Signal #2: ECD2B.CH
 Acq On : 05 Nov 2020 13:02
 Operator : DD\AJ
 Sample : I.BLK
 Misc :
 ALS Vial : 2 Sample Multiplier: 1

Instrument :
 ECD_P
 ClientSampled :

Integration File signal 1: autoint1.e
 Integration File signal 2: autoint2.e
 Quant Time: Nov 05 14:22:43 2020
 Quant Method : Z:\pestpcbsrv\HPCHEM1\ECD_P\methods\PP110420.M
 Quant Title : GC EXTRACTABLES
 QLast Update : Thu Nov 05 13:03:18 2020
 Response via : Initial Calibration
 Integrator: ChemStation 6890 Scale Mode: Small noise peaks clipped

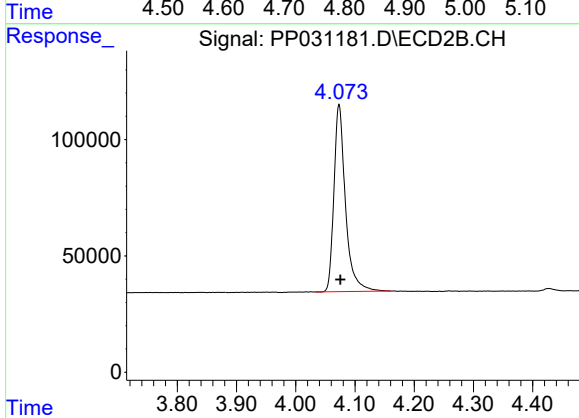
Volume Inj. : 2 µl
 Signal #1 Phase : ZB-MR1 Signal #2 Phase: ZB-MR2
 Signal #1 Info : 30Mx0.32mmx 0.50µ Signal #2 Info : 30M x 0.32mm x 0.25µm



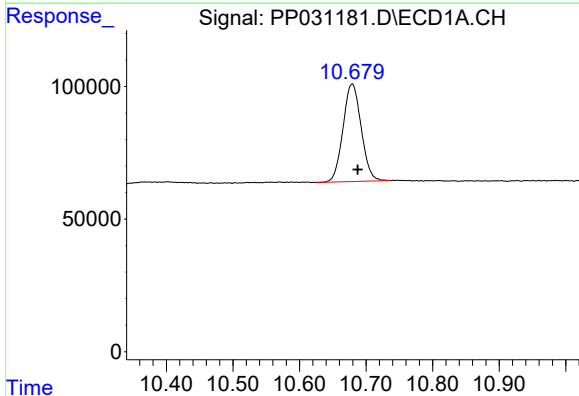


#1 Tetrachloro-m-xylene
 R.T.: 4.798 min
 Delta R.T.: -0.003 min
 Response: 1112865
 Conc: 16.66 ng/ml

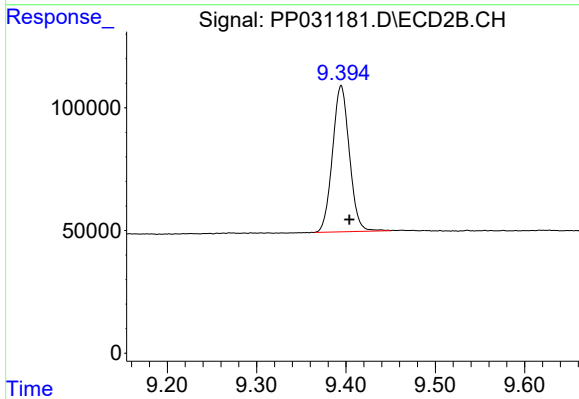
Instrument :
 ECD_P
 ClientSampleId :



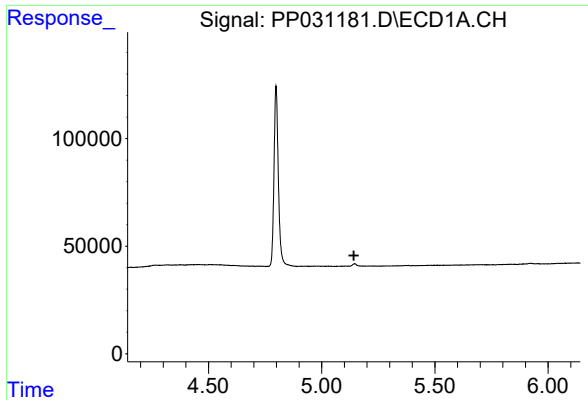
#1 Tetrachloro-m-xylene
 R.T.: 4.073 min
 Delta R.T.: -0.002 min
 Response: 1089467
 Conc: 16.39 ng/ml



#2 Decachlorobiphenyl
 R.T.: 10.679 min
 Delta R.T.: -0.008 min
 Response: 697264
 Conc: 17.44 ng/ml

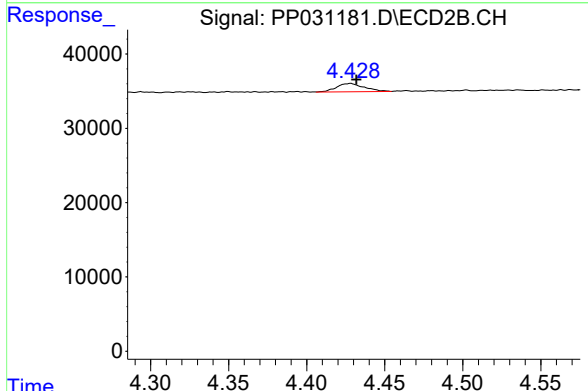


#2 Decachlorobiphenyl
 R.T.: 9.395 min
 Delta R.T.: -0.009 min
 Response: 781944
 Conc: 18.73 ng/ml

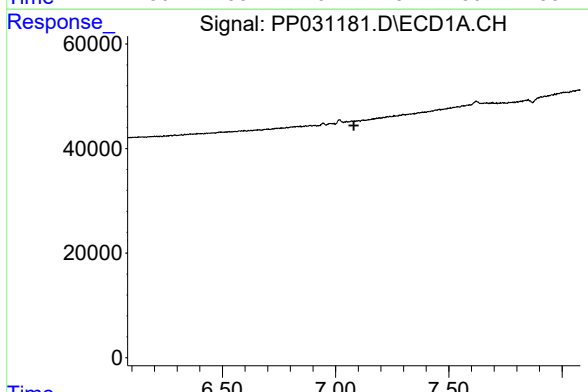


#9 AR-1221-2
 R.T.: 0.000 min
 Exp R.T. : 5.143 min
 Response: 0
 Conc: N.D.

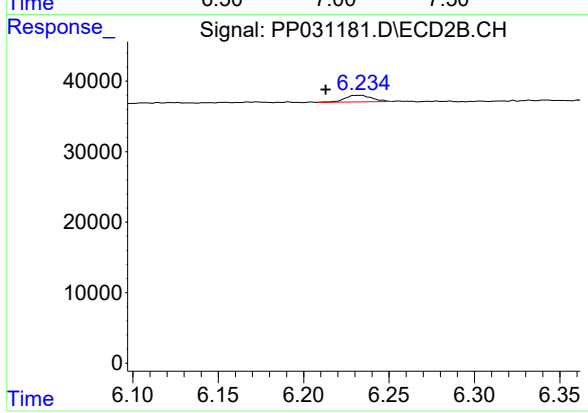
Instrument :
 ECD_P
 ClientSampled :



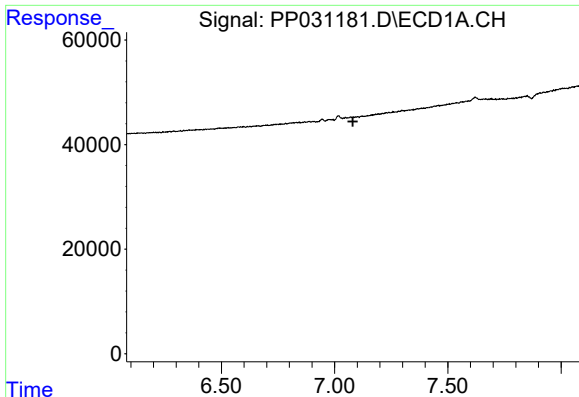
#9 AR-1221-2
 R.T.: 4.428 min
 Delta R.T.: -0.004 min
 Response: 13765
 Conc: 32.15 ng/ml



#20 AR-1242-5
 R.T.: 0.000 min
 Exp R.T. : 7.081 min
 Response: 0
 Conc: N.D.



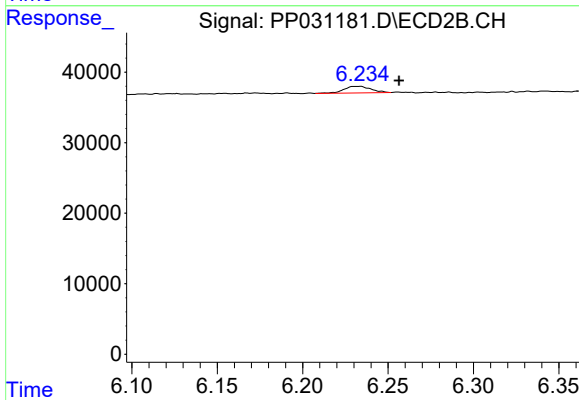
#20 AR-1242-5
 R.T.: 6.234 min
 Delta R.T.: 0.021 min
 Response: 10282
 Conc: 10.33 ng/ml



#25 AR-1248-5

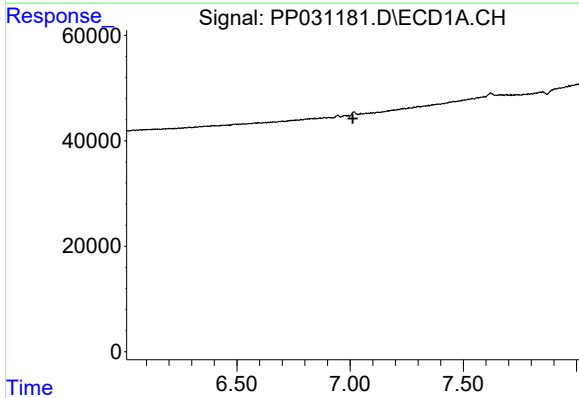
R.T.: 0.000 min
 Exp R.T. : 7.080 min
 Response: 0
 Conc: N.D.

Instrument :
 ECD_P
 ClientSampleId :



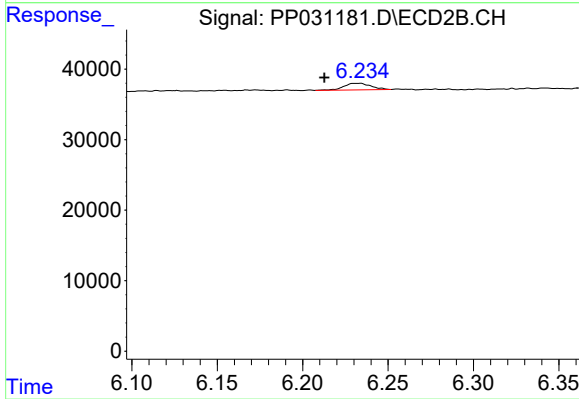
#25 AR-1248-5

R.T.: 6.234 min
 Delta R.T.: -0.023 min
 Response: 10282
 Conc: 8.14 ng/ml



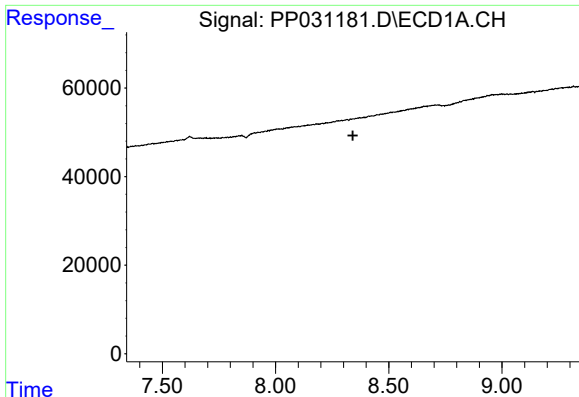
#26 AR-1254-1

R.T.: 0.000 min
 Exp R.T. : 7.013 min
 Response: 0
 Conc: N.D.



#26 AR-1254-1

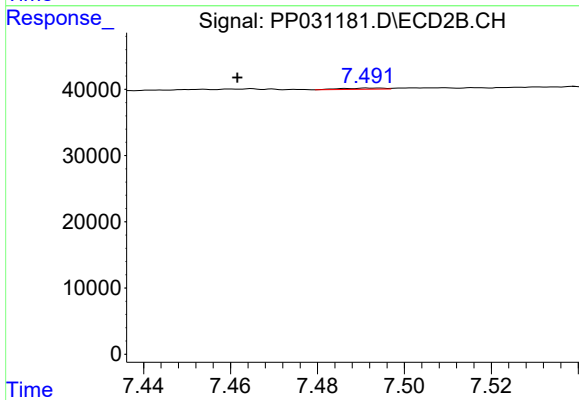
R.T.: 6.234 min
 Delta R.T.: 0.021 min
 Response: 10282
 Conc: 5.23 ng/ml



#30 AR-1254-5

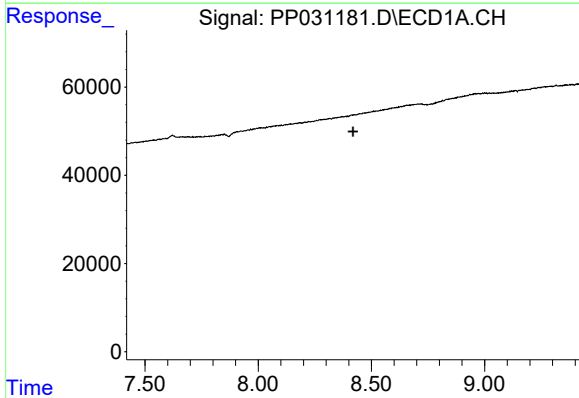
R.T.: 0.000 min
 Exp R.T. : 8.341 min
 Response: 0
 Conc: N.D.

Instrument :
 ECD_P
 ClientSampleId :



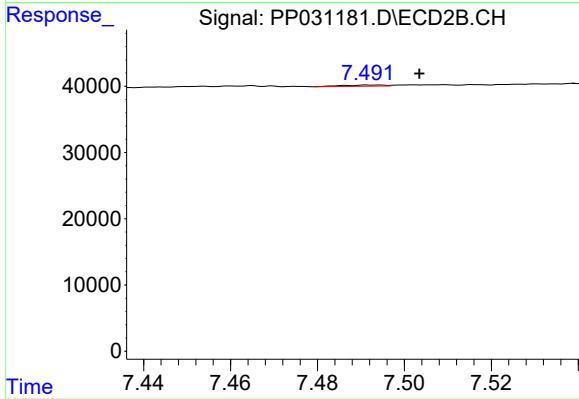
#30 AR-1254-5

R.T.: 7.491 min
 Delta R.T.: 0.030 min
 Response: 1213
 Conc: 0.55 ng/ml



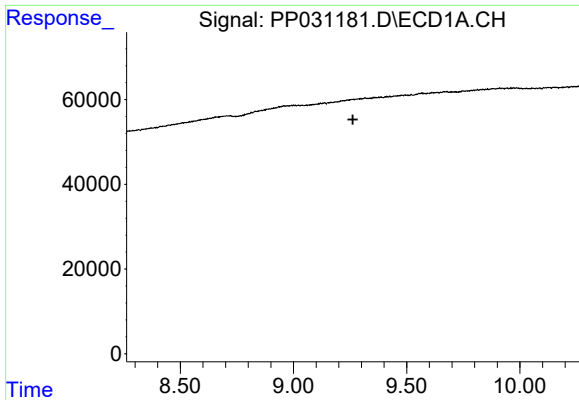
#36 AR-1262-1

R.T.: 0.000 min
 Exp R.T. : 8.419 min
 Response: 0
 Conc: N.D.



#36 AR-1262-1

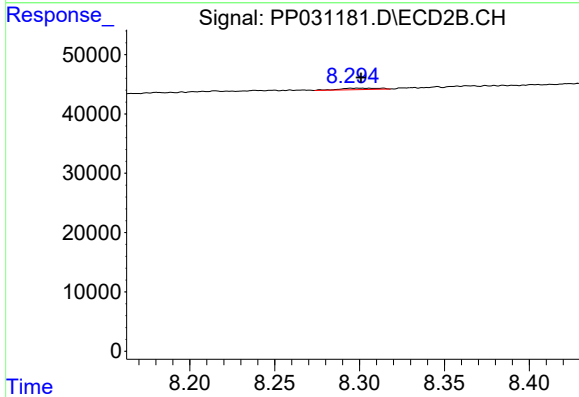
R.T.: 7.491 min
 Delta R.T.: -0.012 min
 Response: 1213
 Conc: 0.52 ng/ml



#38 AR-1262-3

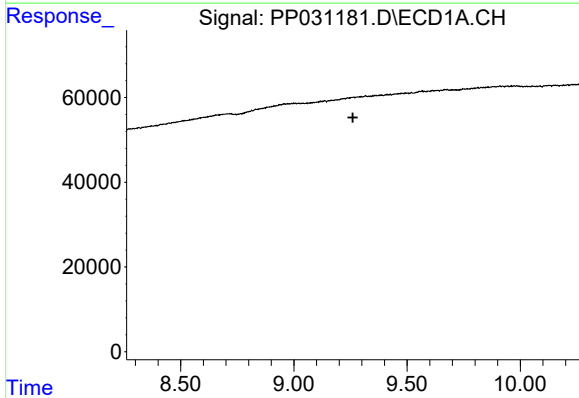
R.T.: 0.000 min
 Exp R.T. : 9.262 min
 Response: 0
 Conc: N.D.

Instrument :
 ECD_P
 ClientSampled :



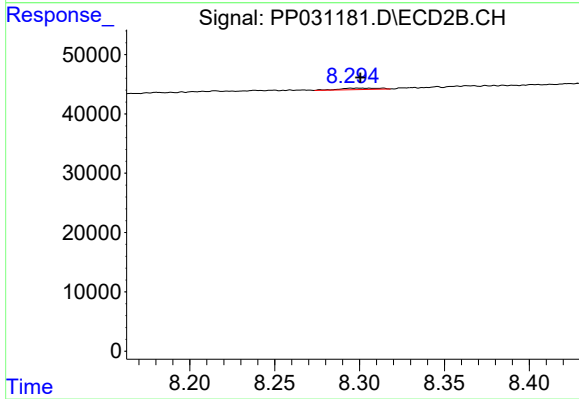
#38 AR-1262-3

R.T.: 8.299 min
 Delta R.T.: -0.002 min
 Response: 4005
 Conc: 2.36 ng/ml



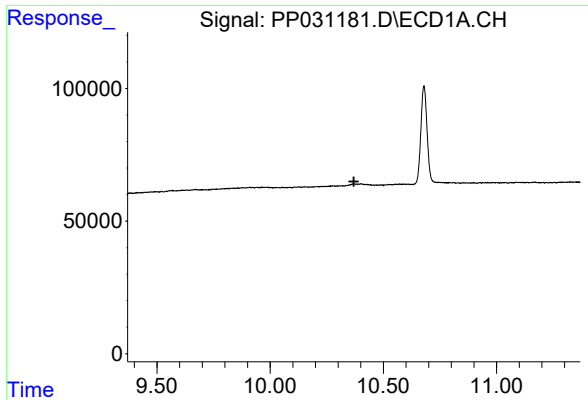
#41 AR-1268-1

R.T.: 0.000 min
 Exp R.T. : 9.261 min
 Response: 0
 Conc: N.D.



#41 AR-1268-1

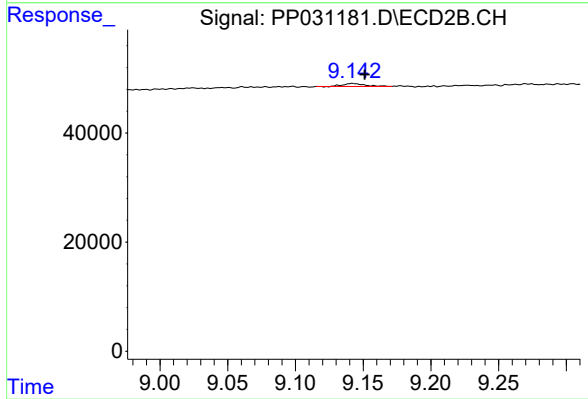
R.T.: 8.299 min
 Delta R.T.: -0.002 min
 Response: 4005
 Conc: 0.82 ng/ml



#45 AR-1268-5

R.T.: 0.000 min
Exp R.T. : 10.369 min
Response: 0
Conc: N.D.

Instrument :
ECD_P
ClientSampleId :



#45 AR-1268-5

R.T.: 9.142 min
Delta R.T.: -0.009 min
Response: 5853
Conc: 0.44 ng/ml