

Data Path : Z:\pestpcbsrv\HPCHEM1\ECD_P\Data\PP110520\
 Data File : PP031184.D
 Signal(s) : Signal #1: ECD1A.CH Signal #2: ECD2B.CH
 Acq On : 05 Nov 2020 14:28
 Operator : DD\AJ
 Sample : PB132699BL
 Misc :
 ALS Vial : 5 Sample Multiplier: 1

Instrument :
 ECD_P
 ClientSampleId :

Integration File signal 1: autoint1.e
 Integration File signal 2: autoint2.e
 Quant Time: Nov 05 14:47:27 2020
 Quant Method : Z:\pestpcbsrv\HPCHEM1\ECD_P\methods\PP110420.M
 Quant Title : GC EXTRACTABLES
 QLast Update : Thu Nov 05 13:03:18 2020
 Response via : Initial Calibration
 Integrator: ChemStation 6890 Scale Mode: Small noise peaks clipped

Volume Inj. : 2 µl
 Signal #1 Phase : ZB-MR2 Signal #2 Phase: ZB-MR2
 Signal #1 Info : 30Mx0.32mmx 0.50µ Signal #2 Info : 30M x 0.32mm x 0.25µm

| | Compound | RT#1 | RT#2 | Resp#1 | Resp#2 | ng/ml | ng/ml |
|-----------------------------|-----------------|--------|--------|---------|---------|--------|----------|
| ----- | | | | | | | |
| System Monitoring Compounds | | | | | | | |
| 1) | SA Tetrachlo... | 4.798 | 4.073 | 1126767 | 1106942 | 16.870 | 16.653 |
| 2) | SA Decachlor... | 10.679 | 9.394 | 697901 | 776930 | 17.455 | 18.606 |
| Target Compounds | | | | | | | |
| 7) | L1 AR-1016-5 | 0.000 | 5.860f | 0 | 10132 | N.D. | 7.719 # |
| 9) | L2 AR-1221-2 | 0.000 | 4.426 | 0 | 14058 | N.D. | 32.833 # |
| 15) | L3 AR-1232-5 | 0.000 | 5.860f | 0 | 10132 | N.D. | 20.981 # |
| 20) | L4 AR-1242-5 | 0.000 | 6.232f | 0 | 24084 | N.D. | 24.193 # |
| 24) | L5 AR-1248-4 | 0.000 | 5.860f | 0 | 10132 | N.D. | 6.865 # |
| 25) | L5 AR-1248-5 | 0.000 | 6.232f | 0 | 24084 | N.D. | 19.070 # |
| 26) | L6 AR-1254-1 | 0.000 | 6.232f | 0 | 24084 | N.D. | 12.246 # |
| 32) | L7 AR-1260-2 | 0.000 | 7.118 | 0 | 504 | N.D. | 0.215 # |
| 35) | L7 AR-1260-5 | 0.000 | 8.019 | 0 | 108 | N.D. | 0.024 # |
| 37) | L8 AR-1262-2 | 0.000 | 8.019 | 0 | 108 | N.D. | 0.026 # |
| 38) | L8 AR-1262-3 | 0.000 | 8.299 | 0 | 3468 | N.D. | 2.045 # |
| 39) | L8 AR-1262-4 | 0.000 | 8.367 | 0 | 986 | N.D. | 0.310 # |
| 41) | L9 AR-1268-1 | 0.000 | 8.299 | 0 | 3468 | N.D. | 0.708 # |
| 42) | L9 AR-1268-2 | 0.000 | 8.367 | 0 | 986 | N.D. | 0.207 # |
| 45) | L9 AR-1268-5 | 0.000 | 9.142 | 0 | 8097 | N.D. | 0.604 # |

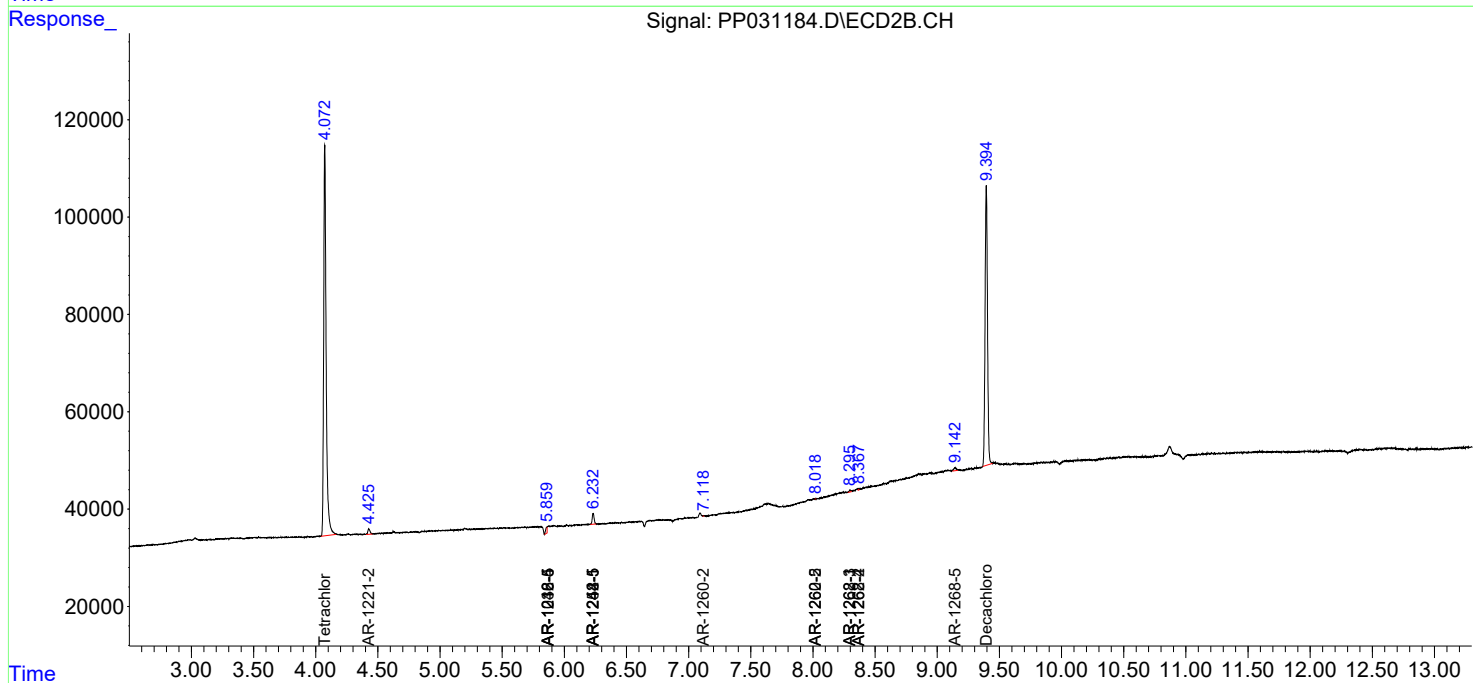
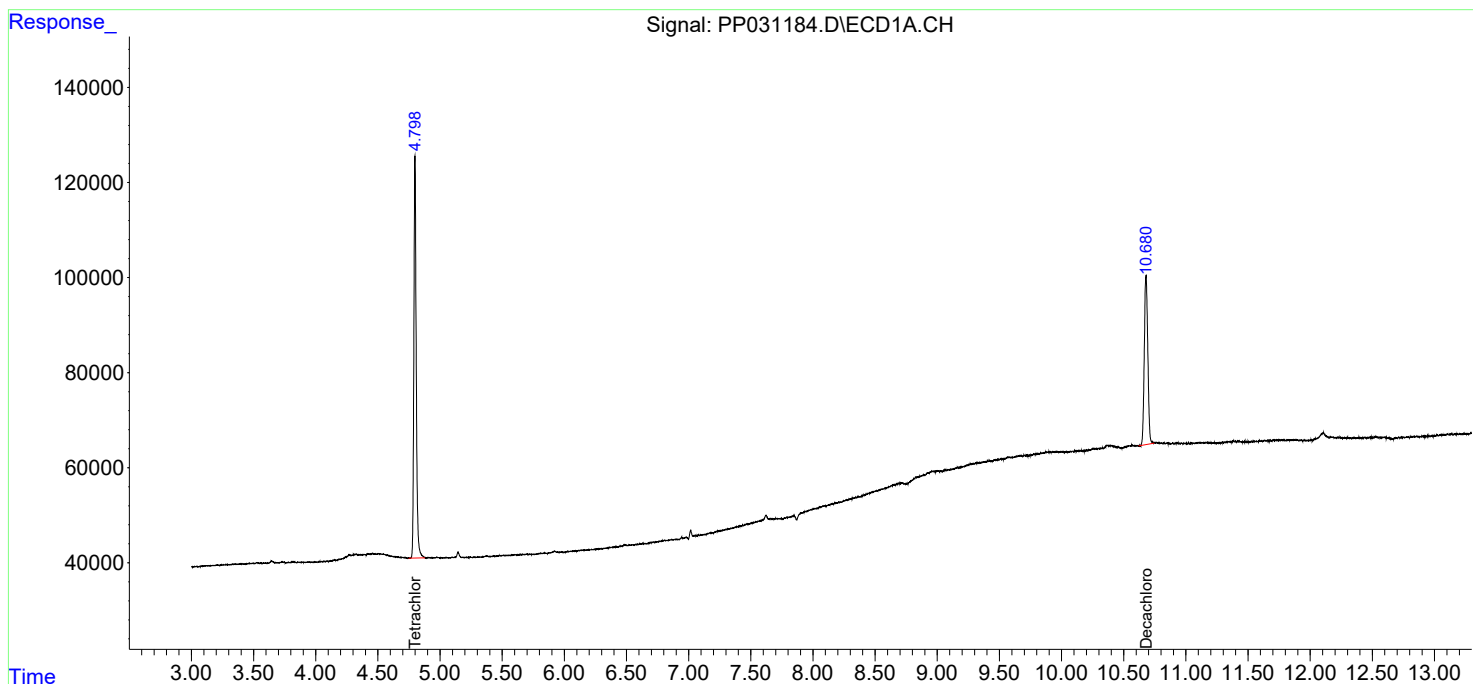
(f)=RT Delta > 1/2 Window (#)=Amounts differ by > 25% (m)=manual int.

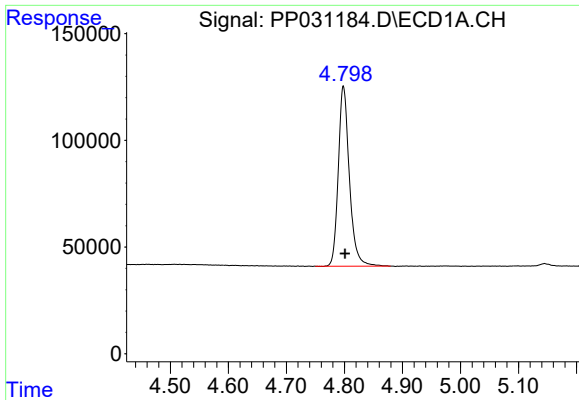
Data Path : Z:\pestpcbsrv\HPCHEM1\ECD_P\Data\PP110520\
 Data File : PP031184.D
 Signal(s) : Signal #1: ECD1A.CH Signal #2: ECD2B.CH
 Acq On : 05 Nov 2020 14:28
 Operator : DD\AJ
 Sample : PB132699BL
 Misc :
 ALS Vial : 5 Sample Multiplier: 1

Instrument :
 ECD_P
 ClientSampled :

Integration File signal 1: autoint1.e
 Integration File signal 2: autoint2.e
 Quant Time: Nov 05 14:47:27 2020
 Quant Method : Z:\pestpcbsrv\HPCHEM1\ECD_P\methods\PP110420.M
 Quant Title : GC EXTRACTABLES
 QLast Update : Thu Nov 05 13:03:18 2020
 Response via : Initial Calibration
 Integrator: ChemStation 6890 Scale Mode: Small noise peaks clipped

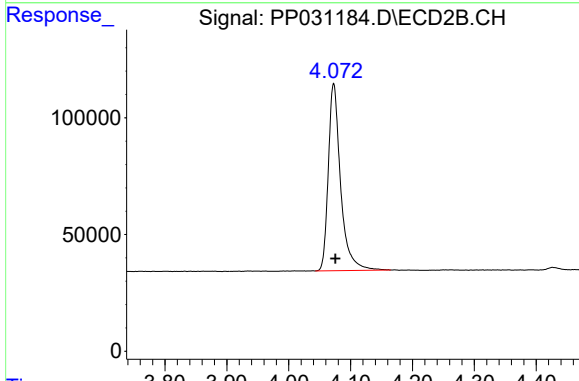
Volume Inj. : 2 µl
 Signal #1 Phase : ZB-MR1 Signal #2 Phase: ZB-MR2
 Signal #1 Info : 30Mx0.32mmx 0.50µ Signal #2 Info : 30M x 0.32mm x 0.25µm



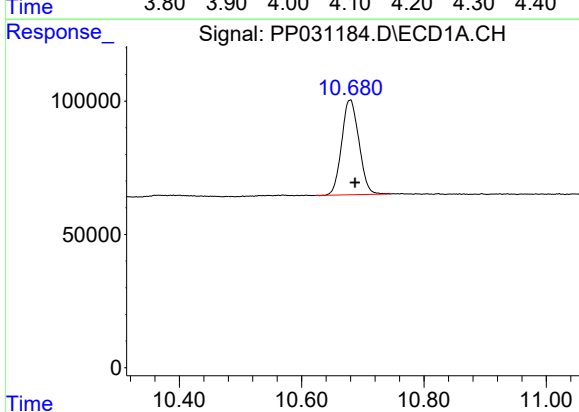


#1 Tetrachloro-m-xylene
 R.T.: 4.798 min
 Delta R.T.: -0.003 min
 Response: 1126767
 Conc: 16.87 ng/ml

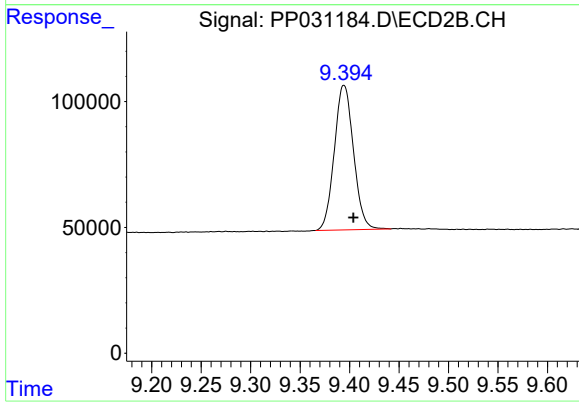
Instrument :
 ECD_P
 ClientSampleId :



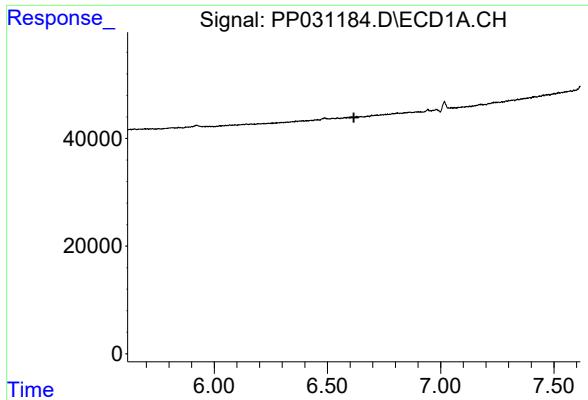
#1 Tetrachloro-m-xylene
 R.T.: 4.073 min
 Delta R.T.: -0.003 min
 Response: 1106942
 Conc: 16.65 ng/ml



#2 Decachlorobiphenyl
 R.T.: 10.679 min
 Delta R.T.: -0.008 min
 Response: 697901
 Conc: 17.45 ng/ml



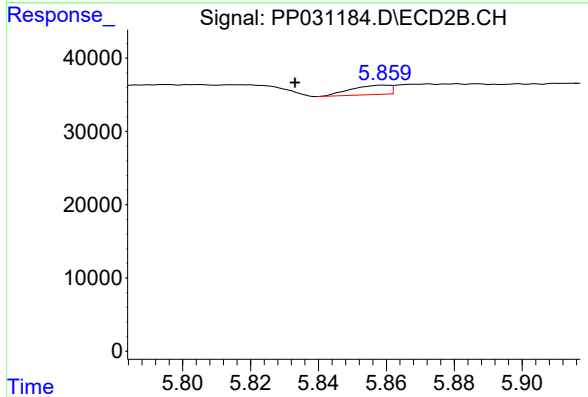
#2 Decachlorobiphenyl
 R.T.: 9.394 min
 Delta R.T.: -0.009 min
 Response: 776930
 Conc: 18.61 ng/ml



#7 AR-1016-5

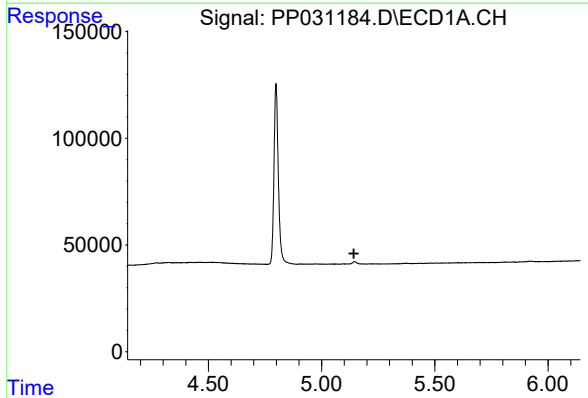
R.T.: 0.000 min
 Exp R.T. : 6.617 min
 Response: 0
 Conc: N.D.

Instrument :
 ECD_P
 ClientSampled :



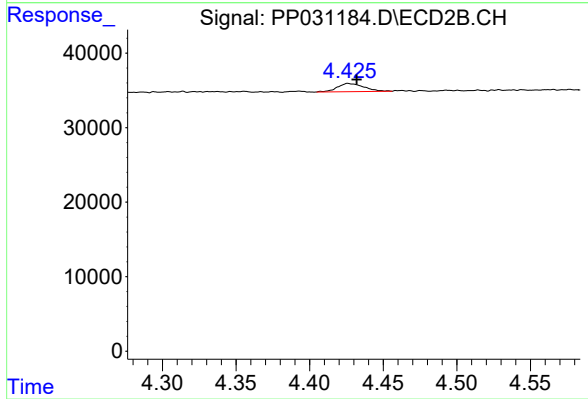
#7 AR-1016-5

R.T.: 5.860 min
 Delta R.T.: 0.026 min
 Response: 10132
 Conc: 7.72 ng/ml



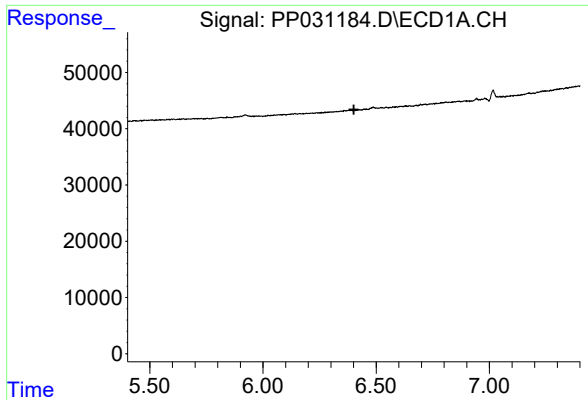
#9 AR-1221-2

R.T.: 0.000 min
 Exp R.T. : 5.143 min
 Response: 0
 Conc: N.D.



#9 AR-1221-2

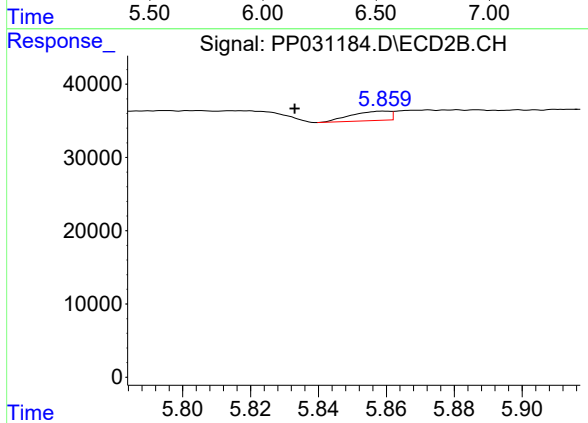
R.T.: 4.426 min
 Delta R.T.: -0.006 min
 Response: 14058
 Conc: 32.83 ng/ml



#15 AR-1232-5

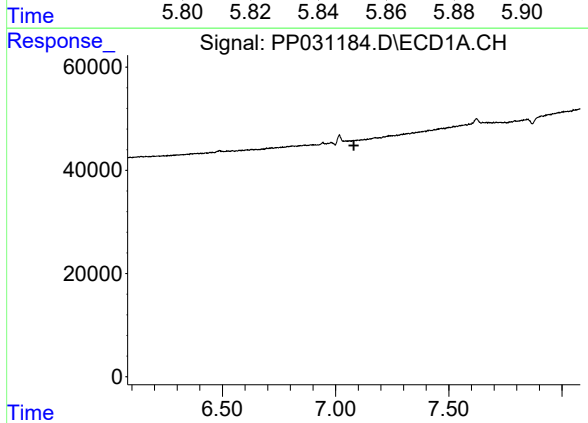
R.T.: 0.000 min
 Exp R.T. : 6.402 min
 Response: 0
 Conc: N.D.

Instrument :
 ECD_P
 ClientSampled :



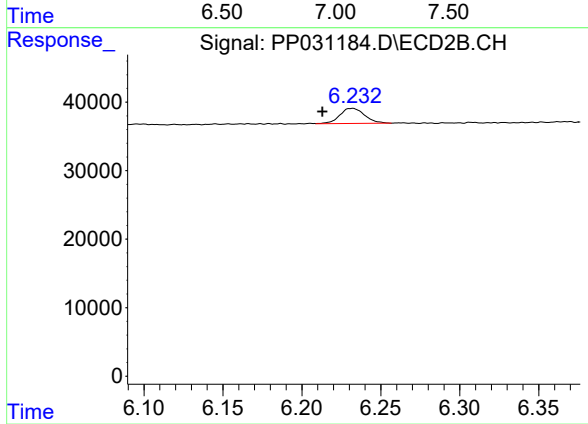
#15 AR-1232-5

R.T.: 5.860 min
 Delta R.T.: 0.027 min
 Response: 10132
 Conc: 20.98 ng/ml



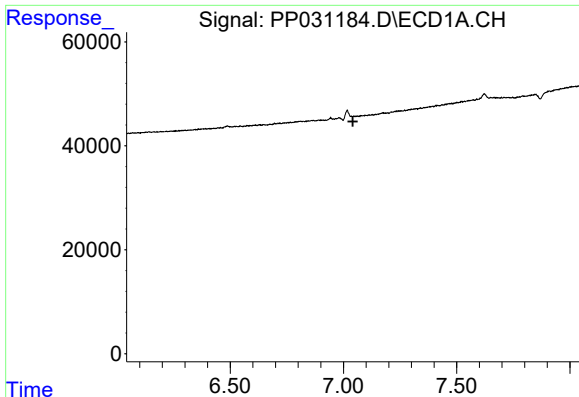
#20 AR-1242-5

R.T.: 0.000 min
 Exp R.T. : 7.081 min
 Response: 0
 Conc: N.D.



#20 AR-1242-5

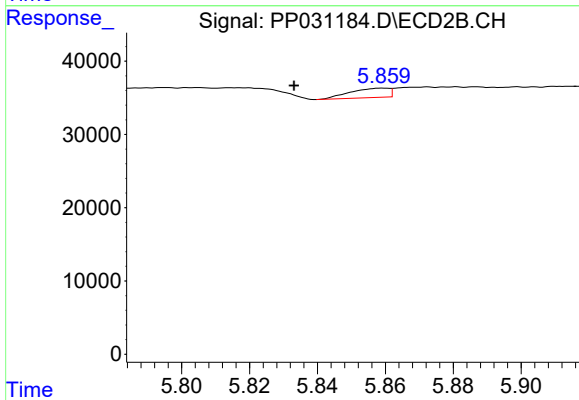
R.T.: 6.232 min
 Delta R.T.: 0.019 min
 Response: 24084
 Conc: 24.19 ng/ml



#24 AR-1248-4

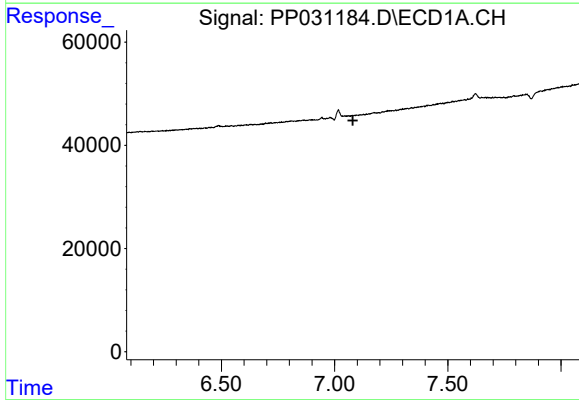
R.T.: 0.000 min
 Exp R.T. : 7.042 min
 Response: 0
 Conc: N.D.

Instrument :
 ECD_P
 ClientSampled :



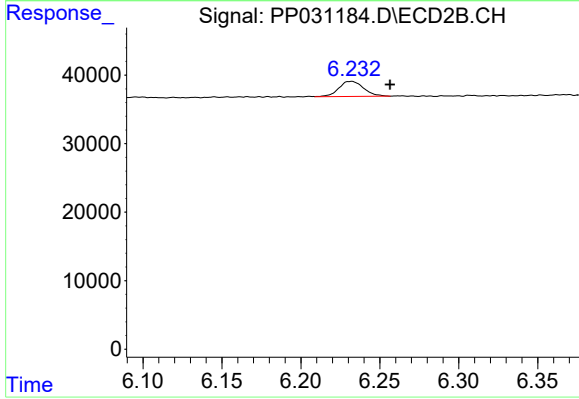
#24 AR-1248-4

R.T.: 5.860 min
 Delta R.T.: 0.026 min
 Response: 10132
 Conc: 6.86 ng/ml



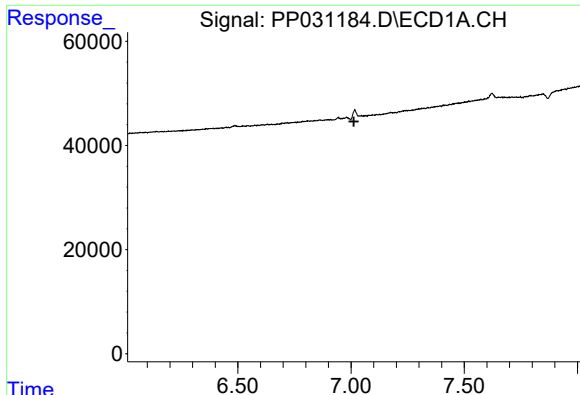
#25 AR-1248-5

R.T.: 0.000 min
 Exp R.T. : 7.080 min
 Response: 0
 Conc: N.D.



#25 AR-1248-5

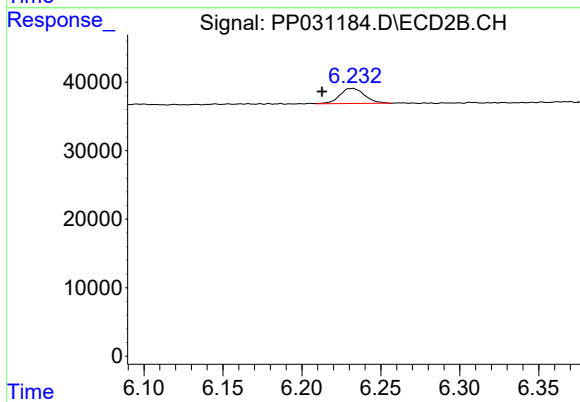
R.T.: 6.232 min
 Delta R.T.: -0.024 min
 Response: 24084
 Conc: 19.07 ng/ml



#26 AR-1254-1

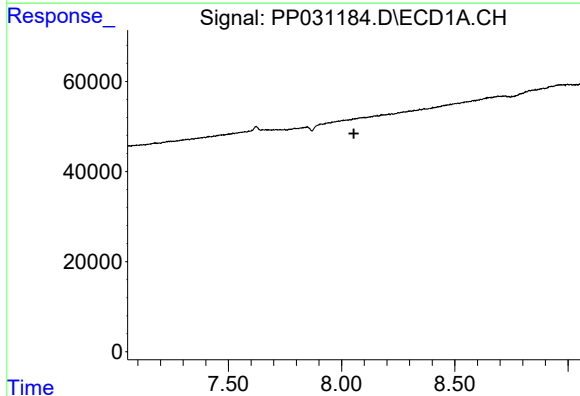
R.T.: 0.000 min
 Exp R.T. : 7.013 min
 Response: 0
 Conc: N.D.

Instrument :
 ECD_P
 ClientSampled :



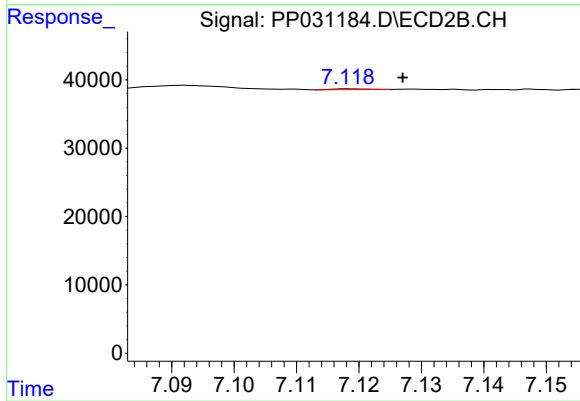
#26 AR-1254-1

R.T.: 6.232 min
 Delta R.T.: 0.019 min
 Response: 24084
 Conc: 12.25 ng/ml



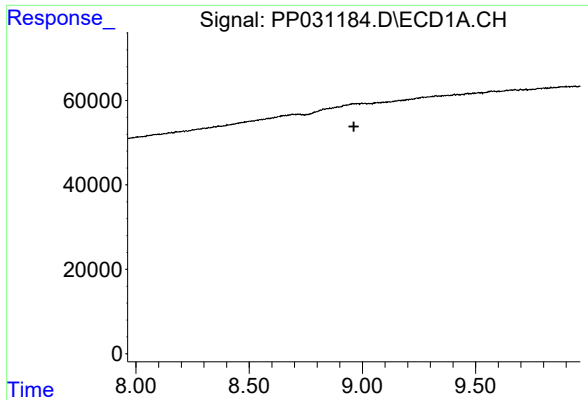
#32 AR-1260-2

R.T.: 0.000 min
 Exp R.T. : 8.054 min
 Response: 0
 Conc: N.D.



#32 AR-1260-2

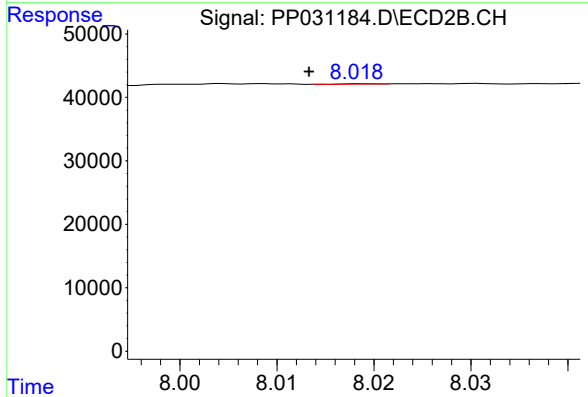
R.T.: 7.118 min
 Delta R.T.: -0.009 min
 Response: 504
 Conc: 0.22 ng/ml



#35 AR-1260-5

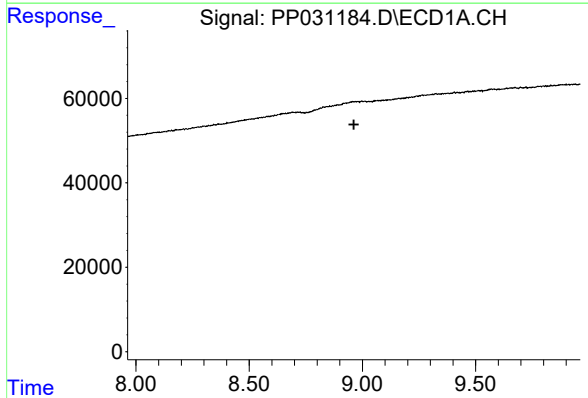
R.T.: 0.000 min
 Exp R.T. : 8.962 min
 Response: 0
 Conc: N.D.

Instrument :
 ECD_P
 ClientSampled :



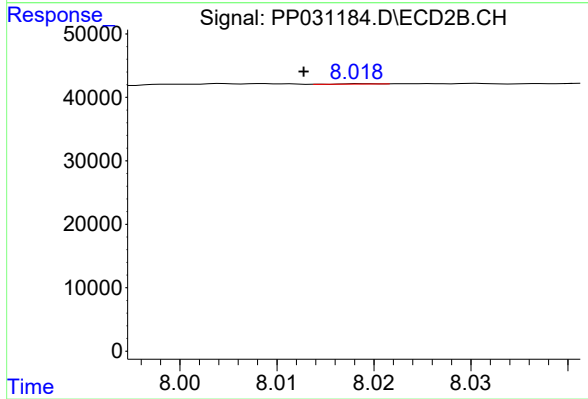
#35 AR-1260-5

R.T.: 8.019 min
 Delta R.T.: 0.006 min
 Response: 108
 Conc: 0.02 ng/ml



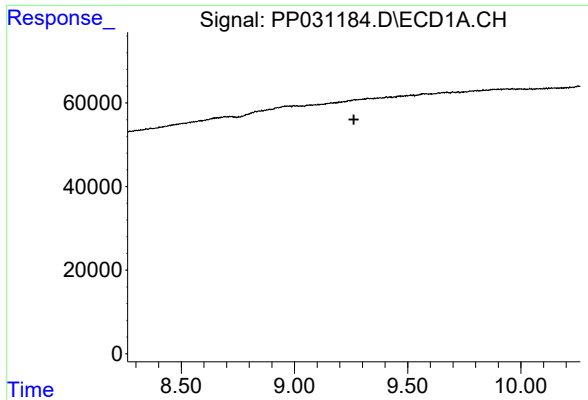
#37 AR-1262-2

R.T.: 0.000 min
 Exp R.T. : 8.963 min
 Response: 0
 Conc: N.D.



#37 AR-1262-2

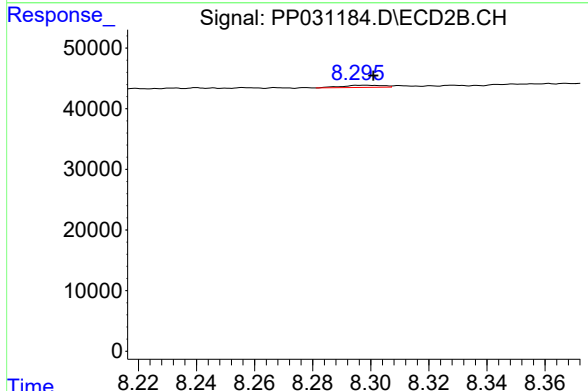
R.T.: 8.019 min
 Delta R.T.: 0.006 min
 Response: 108
 Conc: 0.03 ng/ml



#38 AR-1262-3

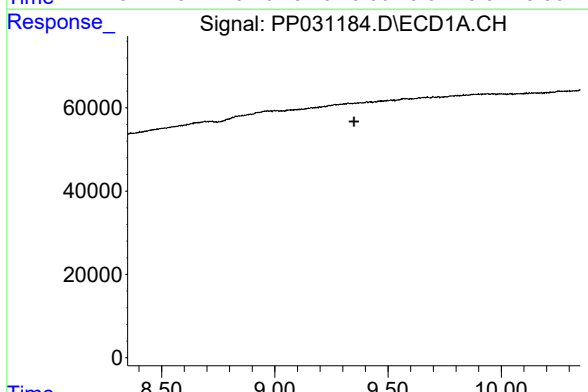
R.T.: 0.000 min
 Exp R.T. : 9.262 min
 Response: 0
 Conc: N.D.

Instrument :
 ECD_P
 ClientSampled :



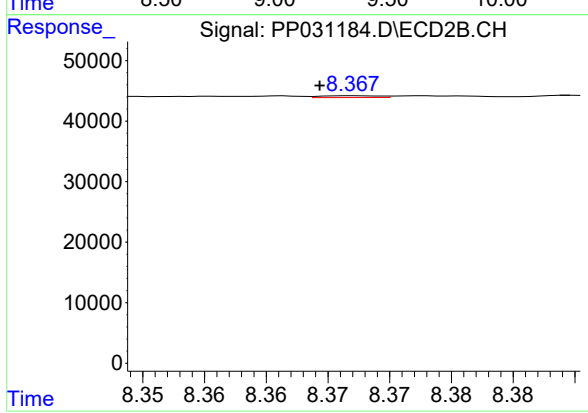
#38 AR-1262-3

R.T.: 8.299 min
 Delta R.T.: -0.002 min
 Response: 3468
 Conc: 2.05 ng/ml



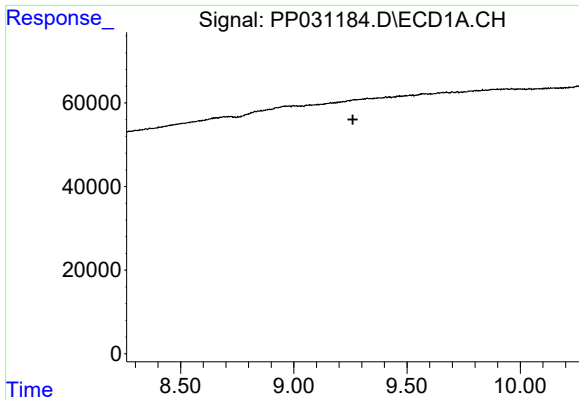
#39 AR-1262-4

R.T.: 0.000 min
 Exp R.T. : 9.350 min
 Response: 0
 Conc: N.D.



#39 AR-1262-4

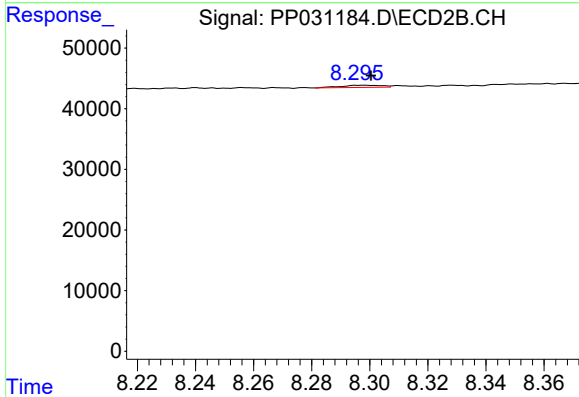
R.T.: 8.367 min
 Delta R.T.: 0.003 min
 Response: 986
 Conc: 0.31 ng/ml



#41 AR-1268-1

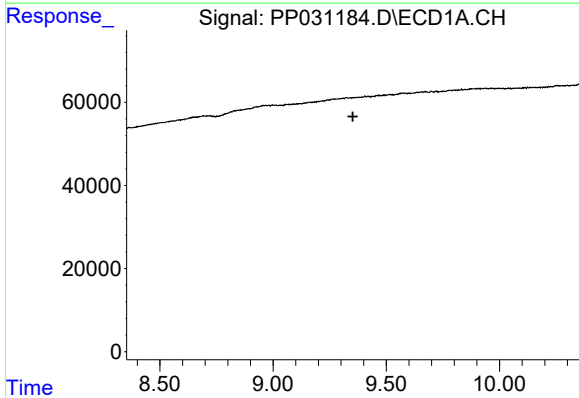
R.T.: 0.000 min
 Exp R.T. : 9.261 min
 Response: 0
 Conc: N.D.

Instrument :
 ECD_P
 ClientSampleId :



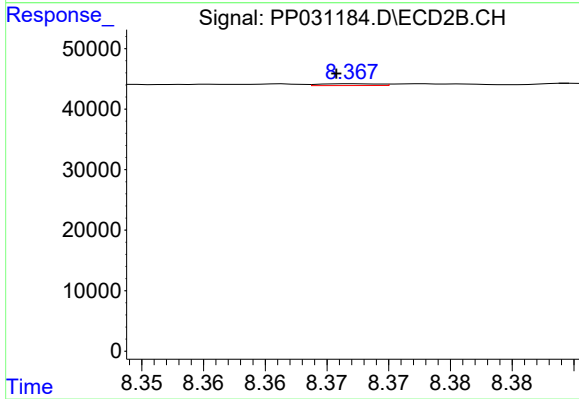
#41 AR-1268-1

R.T.: 8.299 min
 Delta R.T.: -0.002 min
 Response: 3468
 Conc: 0.71 ng/ml



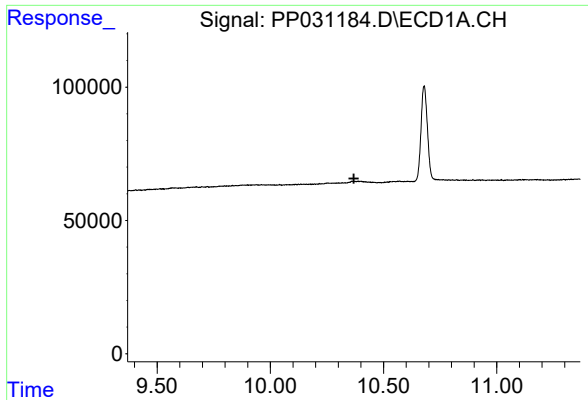
#42 AR-1268-2

R.T.: 0.000 min
 Exp R.T. : 9.352 min
 Response: 0
 Conc: N.D.



#42 AR-1268-2

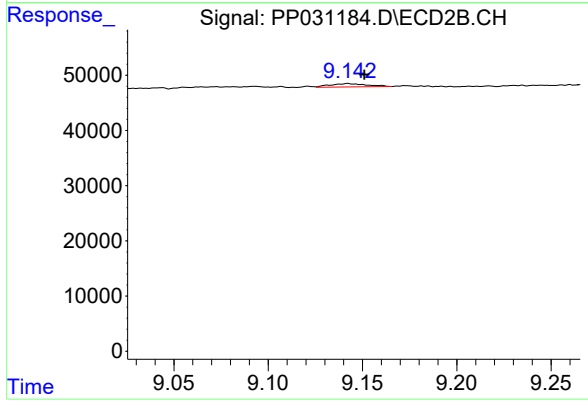
R.T.: 8.367 min
 Delta R.T.: 0.001 min
 Response: 986
 Conc: 0.21 ng/ml



#45 AR-1268-5

R.T.: 0.000 min
Exp R.T. : 10.369 min
Response: 0
Conc: N.D.

Instrument :
ECD_P
ClientSampleId :



#45 AR-1268-5

R.T.: 9.142 min
Delta R.T.: -0.009 min
Response: 8097
Conc: 0.60 ng/ml