

Data Path : Z:\pestpcbsrv\HPCHEM1\ECD_P\Data\PP110521\
 Data File : PP040728.D
 Signal(s) : Signal #1: ECD1A.CH Signal #2: ECD2B.CH
 Acq On : 04 Nov 2021 20:16
 Operator : AJ\MA
 Sample : M4491-01 10X
 Misc :
 ALS Vial : 19 Sample Multiplier: 1

Instrument :
 ECD_P
 ClientSampleId :

Integration File signal 1: autoint1.e
 Integration File signal 2: autoint2.e
 Quant Time: Nov 05 14:48:57 2021
 Quant Method : Z:\pestpcbsrv\HPCHEM1\ECD_P\methods\PP110421.M
 Quant Title : GC EXTRACTABLES
 QLast Update : Thu Nov 04 11:28:51 2021
 Response via : Initial Calibration
 Integrator: ChemStation 6890 Scale Mode: Small noise peaks clipped

Volume Inj. : 2 µl
 Signal #1 Phase : ZB-MR2 Signal #2 Phase: ZB-MR2
 Signal #1 Info : 30Mx0.32mmx 0.50µ Signal #2 Info : 30M x 0.32mm x 0.25µm

	Compound	RT#1	RT#2	Resp#1	Resp#2	ng/ml	ng/ml

System Monitoring Compounds							
1)	SA Tetrachlo...	4.762	3.765	37003	49318	1.827	2.055
2)	SA Decachlor...	10.667	9.035	53746	31902	2.524	1.827 #
Target Compounds							
12)	L3 AR-1232-2	5.785f	0.000	15412	0	65.788	N.D. #
20)	L4 AR-1242-5	0.000	5.912f	0	18738	N.D.	40.684 #
25)	L5 AR-1248-5	0.000	5.912f	0	18738	N.D.	29.667 #
26)	L6 AR-1254-1	6.988	5.912f	-653	18738	N.D.	19.264 #
28)	L6 AR-1254-3	7.609	6.490f	37735	11779	28.029	9.327 #
29)	L6 AR-1254-4	7.897	0.000	12216	0	12.520	N.D. #
30)	L6 AR-1254-5	0.000	7.132	0	13098	N.D.	12.197 #
31)	L7 AR-1260-1	7.755	0.000	19902	0	20.495	N.D. #
32)	L7 AR-1260-2	8.024	0.000	58730	0	50.729	N.D. #
35)	L7 AR-1260-5	8.936	0.000	1074	0	0.514	N.D. #
36)	L8 AR-1262-1	8.349f	7.132	9613	13098	7.672	22.730 #
37)	L8 AR-1262-2	8.930	0.000	2226	0	0.980	N.D. #
38)	L8 AR-1262-3	0.000	7.975	0	7832	N.D.	10.101 #
41)	L9 AR-1268-1	0.000	7.975	0	7832	N.D.	3.653 #
43)	L9 AR-1268-3	0.000	8.241	0	42191	N.D.	24.153 #
44)	L9 AR-1268-4	9.975f	0.000	28004	0	27.561	N.D. #

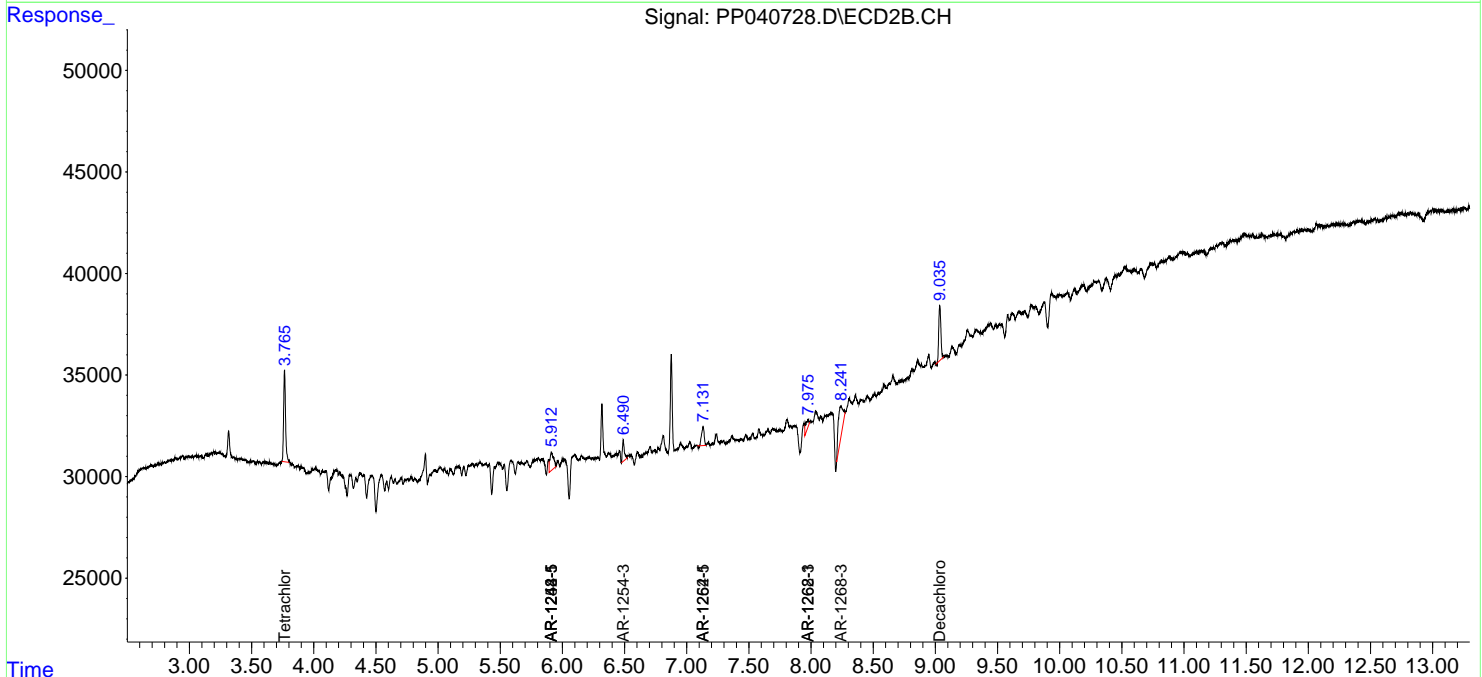
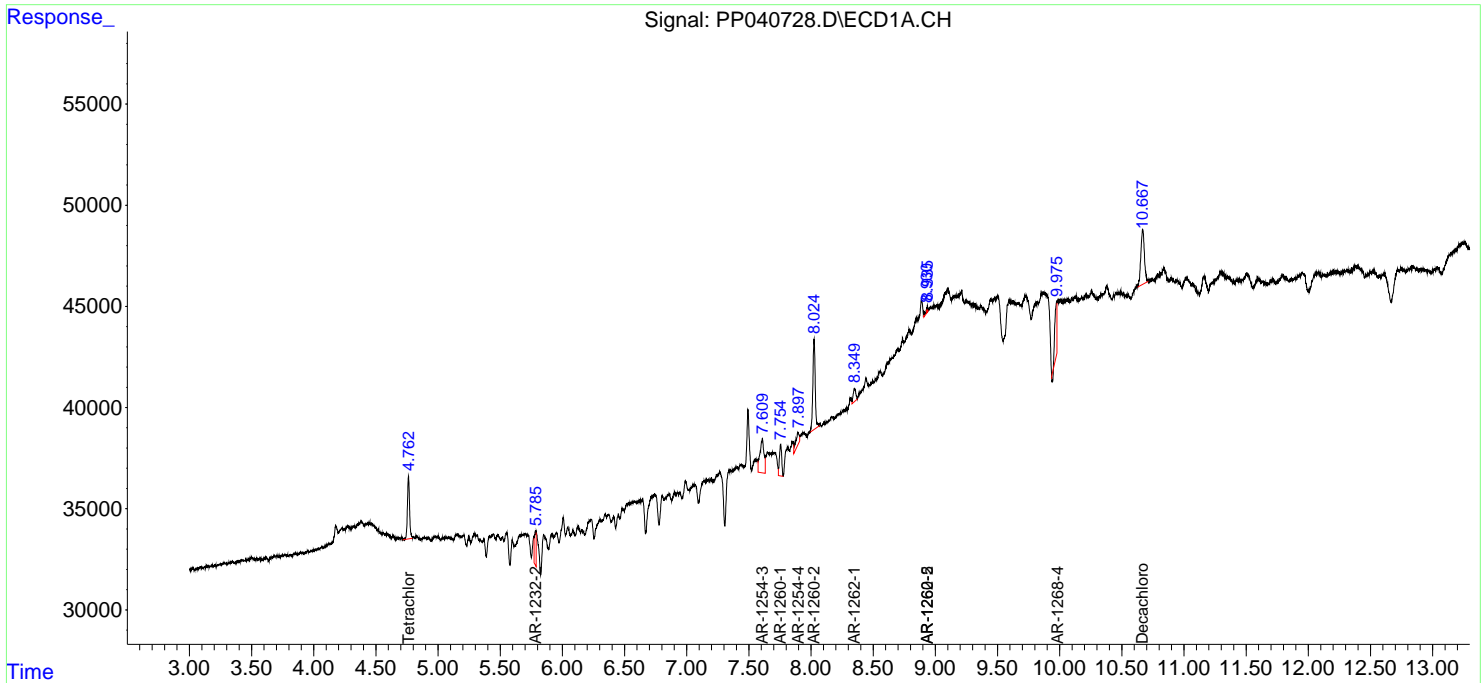
(f)=RT Delta > 1/2 Window (#)=Amounts differ by > 25% (m)=manual int.

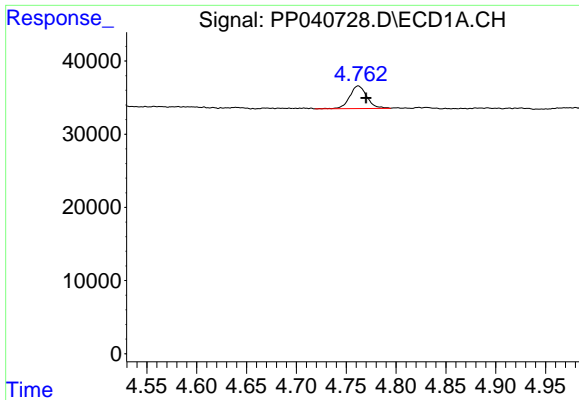
Data Path : Z:\pestpcbsrv\HPCHEM1\ECD_P\Data\PP110521\
 Data File : PP040728.D
 Signal(s) : Signal #1: ECD1A.CH Signal #2: ECD2B.CH
 Acq On : 04 Nov 2021 20:16
 Operator : AJ\MA
 Sample : M4491-01 10X
 Misc :
 ALS Vial : 19 Sample Multiplier: 1

Instrument :
 ECD_P
 ClientSampleId :

Integration File signal 1: autoint1.e
 Integration File signal 2: autoint2.e
 Quant Time: Nov 05 14:48:57 2021
 Quant Method : Z:\pestpcbsrv\HPCHEM1\ECD_P\methods\PP110421.M
 Quant Title : GC EXTRACTABLES
 QLast Update : Thu Nov 04 11:28:51 2021
 Response via : Initial Calibration
 Integrator: ChemStation 6890 Scale Mode: Small noise peaks clipped

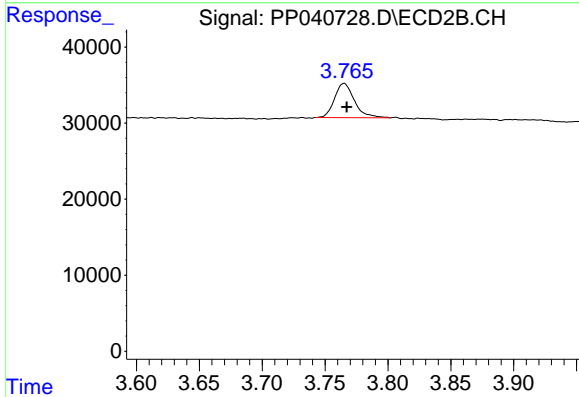
Volume Inj. : 2 µl
 Signal #1 Phase : ZB-MR1 Signal #2 Phase: ZB-MR2
 Signal #1 Info : 30Mx0.32mmx 0.50µ Signal #2 Info : 30M x 0.32mm x 0.25µm



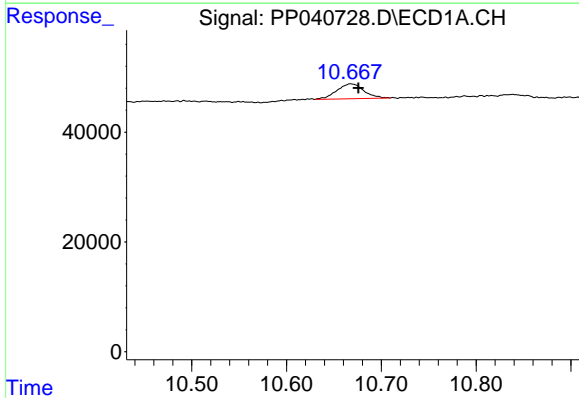


#1 Tetrachloro-m-xylene
 R.T.: 4.762 min
 Delta R.T.: -0.008 min
 Response: 37003
 Conc: 1.83 ng/ml

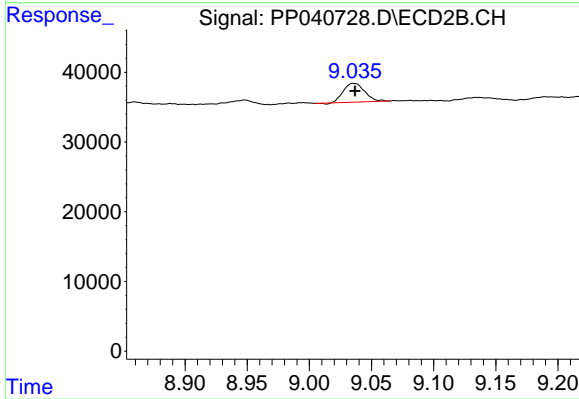
Instrument :
 ECD_P
 ClientSampleId :



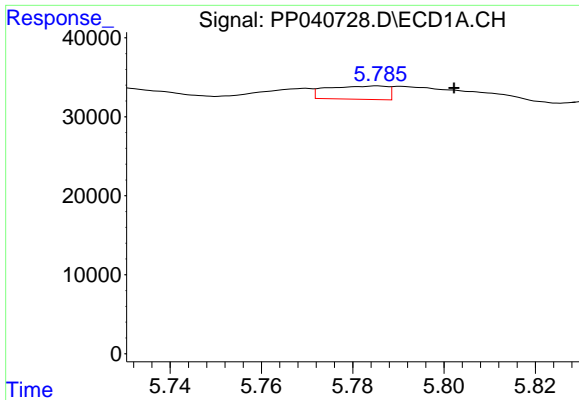
#1 Tetrachloro-m-xylene
 R.T.: 3.765 min
 Delta R.T.: -0.002 min
 Response: 49318
 Conc: 2.06 ng/ml



#2 Decachlorobiphenyl
 R.T.: 10.667 min
 Delta R.T.: -0.009 min
 Response: 53746
 Conc: 2.52 ng/ml



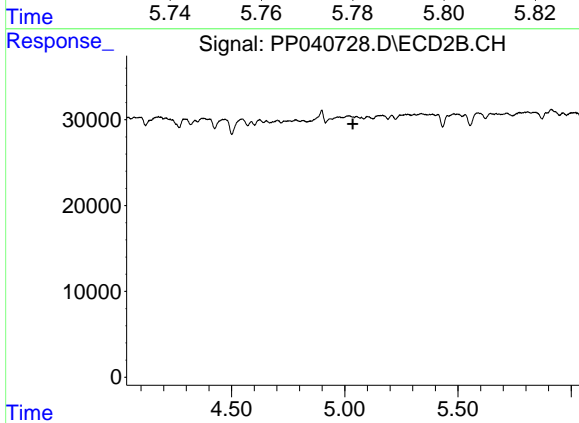
#2 Decachlorobiphenyl
 R.T.: 9.035 min
 Delta R.T.: -0.002 min
 Response: 31902
 Conc: 1.83 ng/ml



#12 AR-1232-2

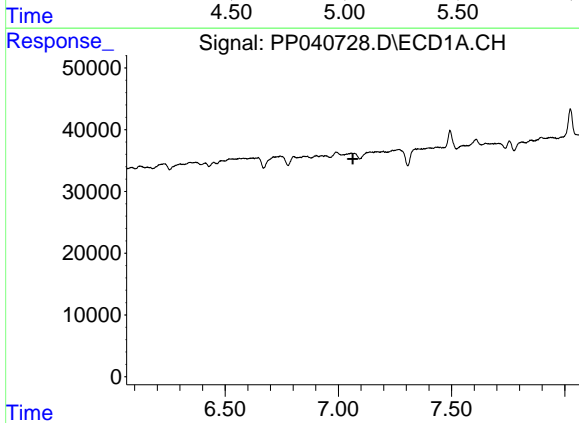
R.T.: 5.785 min
 Delta R.T.: -0.017 min
 Response: 15412
 Conc: 65.79 ng/ml

Instrument :
 ECD_P
 ClientSampleId :



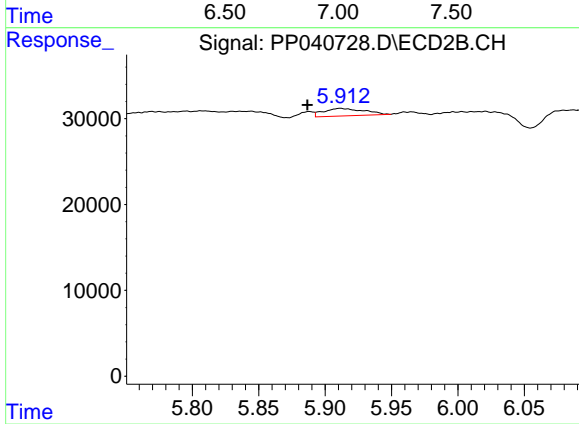
#12 AR-1232-2

R.T.: 0.000 min
 Exp R.T. : 5.036 min
 Response: 0
 Conc: N.D.



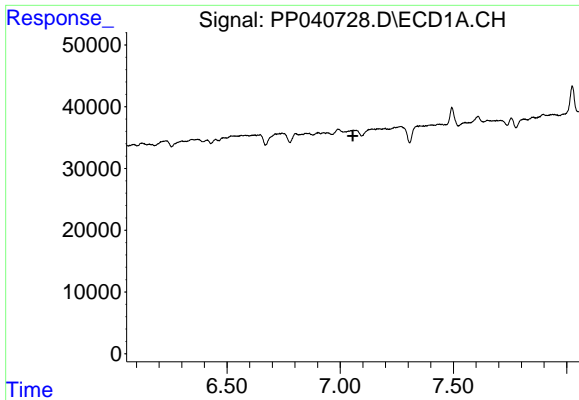
#20 AR-1242-5

R.T.: 0.000 min
 Exp R.T. : 7.064 min
 Response: 0
 Conc: N.D.



#20 AR-1242-5

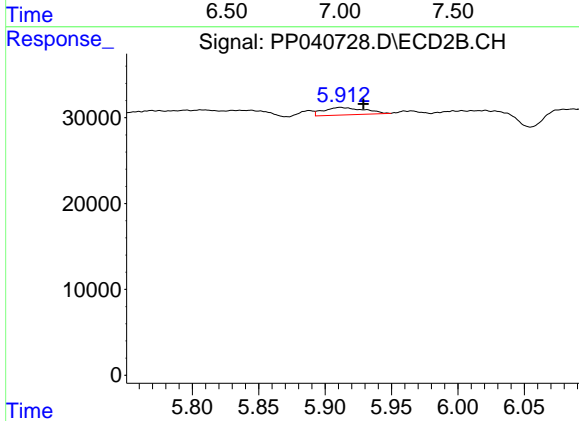
R.T.: 5.912 min
 Delta R.T.: 0.025 min
 Response: 18738
 Conc: 40.68 ng/ml



#25 AR-1248-5

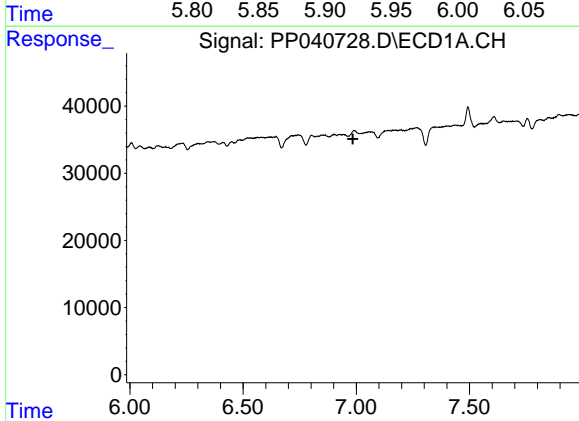
R.T.: 0.000 min
 Exp R.T.: 7.056 min
 Response: 0
 Conc: N.D.

Instrument :
 ECD_P
 ClientSampleId :



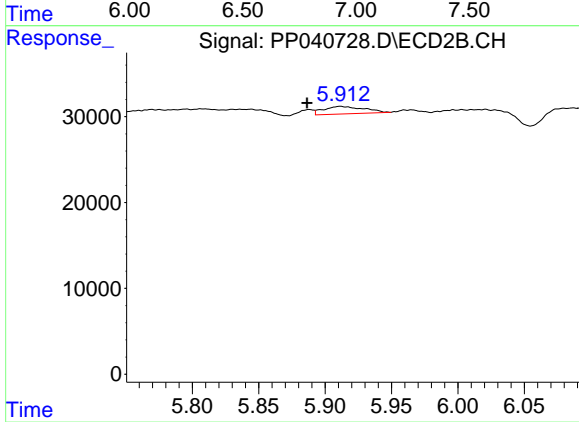
#25 AR-1248-5

R.T.: 5.912 min
 Delta R.T.: -0.017 min
 Response: 18738
 Conc: 29.67 ng/ml



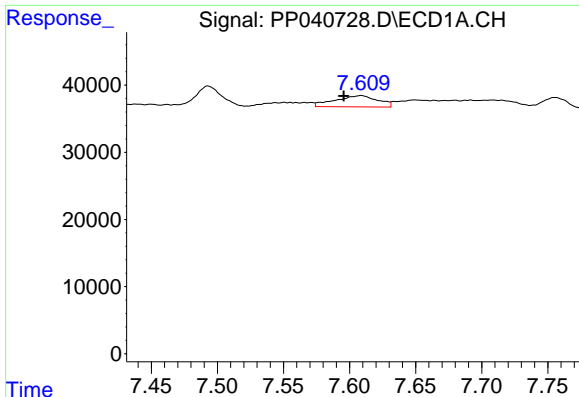
#26 AR-1254-1

R.T.: 6.988 min
 Delta R.T.: 0.003 min
 Response: -653
 Conc: N.D.



#26 AR-1254-1

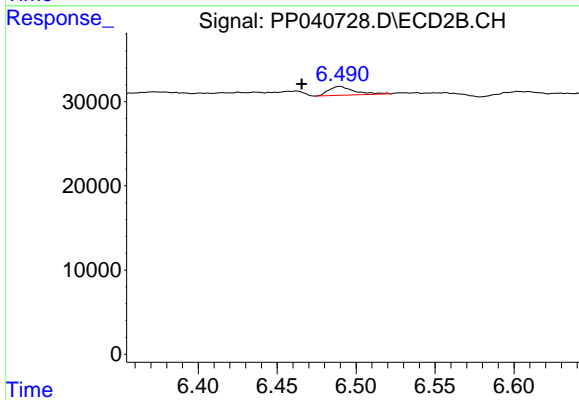
R.T.: 5.912 min
 Delta R.T.: 0.025 min
 Response: 18738
 Conc: 19.26 ng/ml



#28 AR-1254-3

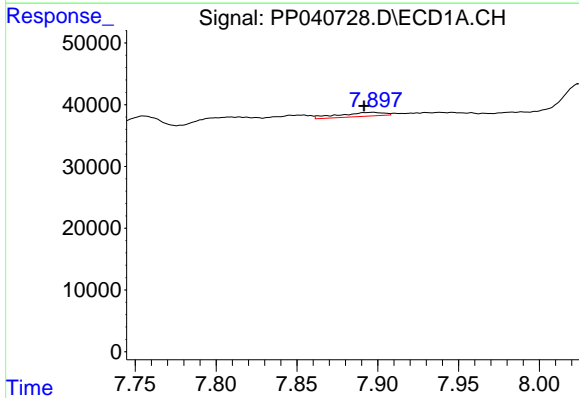
R.T.: 7.609 min
 Delta R.T.: 0.013 min
 Response: 37735
 Conc: 28.03 ng/ml

Instrument :
 ECD_P
 ClientSampleId :



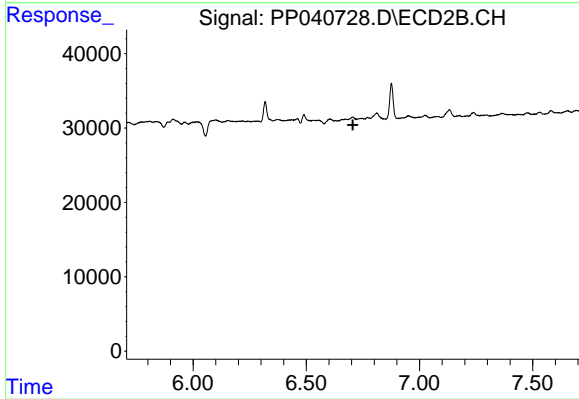
#28 AR-1254-3

R.T.: 6.490 min
 Delta R.T.: 0.024 min
 Response: 11779
 Conc: 9.33 ng/ml



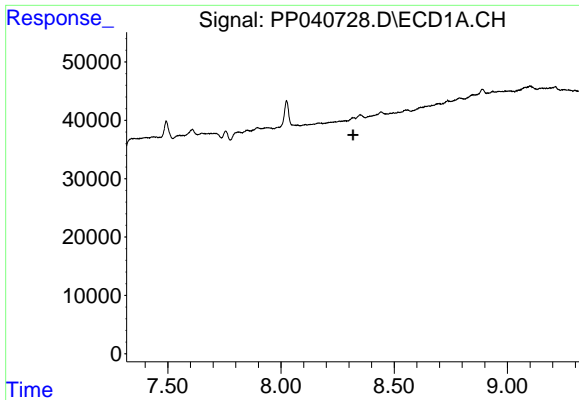
#29 AR-1254-4

R.T.: 7.897 min
 Delta R.T.: 0.006 min
 Response: 12216
 Conc: 12.52 ng/ml



#29 AR-1254-4

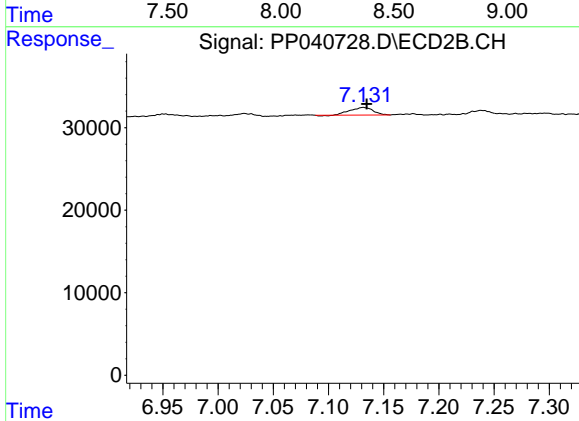
R.T.: 0.000 min
 Exp R.T. : 6.706 min
 Response: 0
 Conc: N.D.



#30 AR-1254-5

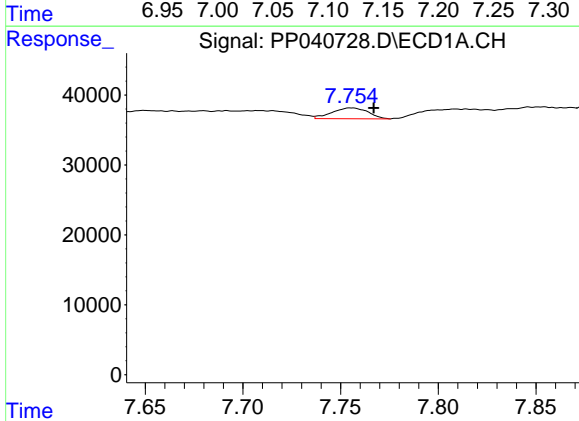
R.T.: 0.000 min
 Exp R.T.: 8.318 min
 Response: 0
 Conc: N.D.

Instrument :
 ECD_P
 ClientSampleId :



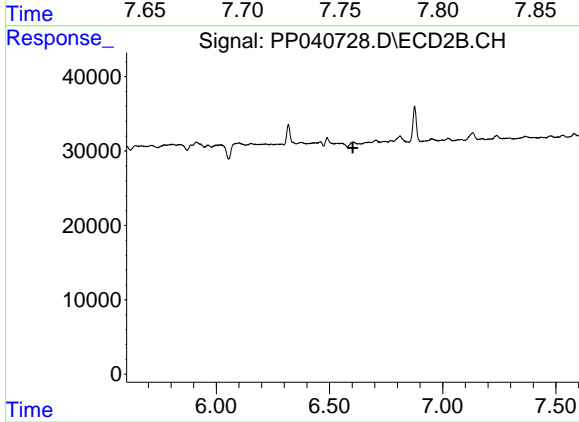
#30 AR-1254-5

R.T.: 7.132 min
 Delta R.T.: -0.003 min
 Response: 13098
 Conc: 12.20 ng/ml



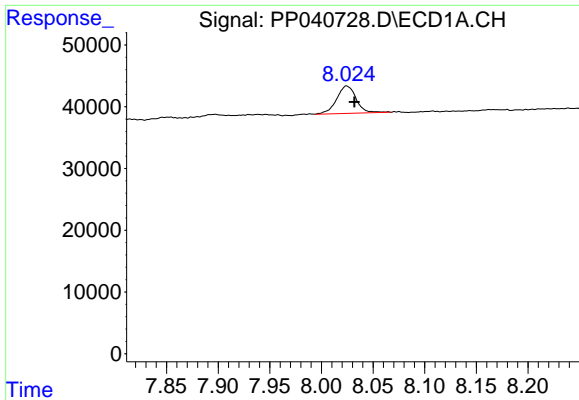
#31 AR-1260-1

R.T.: 7.755 min
 Delta R.T.: -0.012 min
 Response: 19902
 Conc: 20.50 ng/ml



#31 AR-1260-1

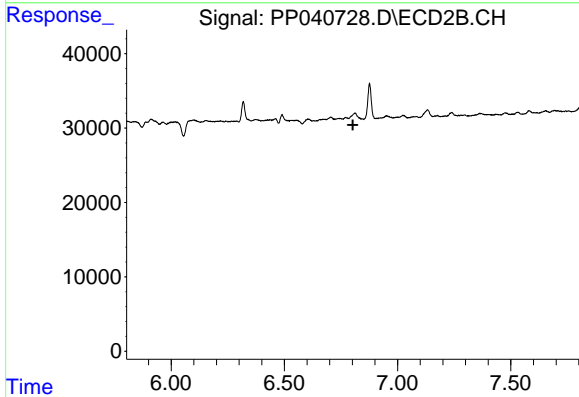
R.T.: 0.000 min
 Exp R.T.: 6.603 min
 Response: 0
 Conc: N.D.



#32 AR-1260-2

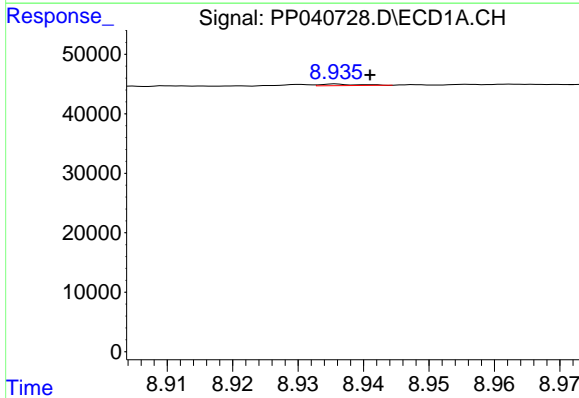
R.T.: 8.024 min
 Delta R.T.: -0.008 min
 Response: 58730
 Conc: 50.73 ng/ml

Instrument :
 ECD_P
 ClientSampleId :



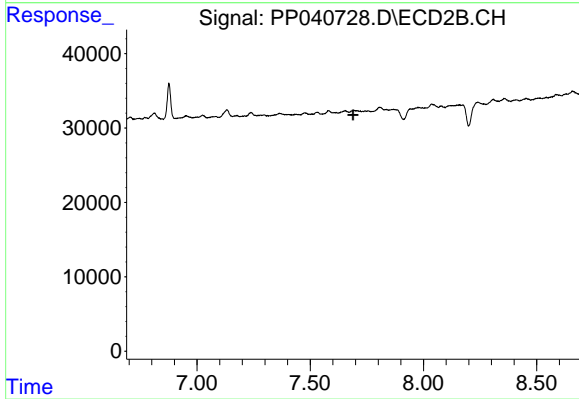
#32 AR-1260-2

R.T.: 0.000 min
 Exp R.T. : 6.802 min
 Response: 0
 Conc: N.D.



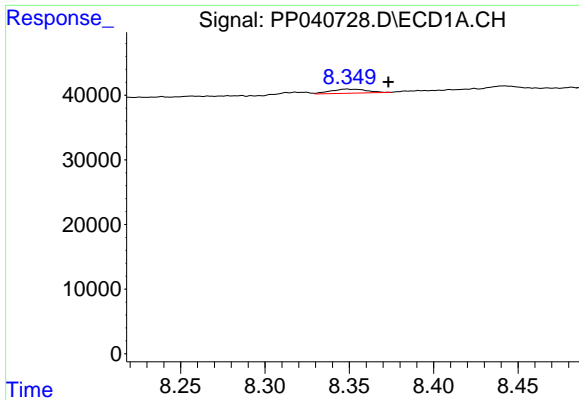
#35 AR-1260-5

R.T.: 8.936 min
 Delta R.T.: -0.005 min
 Response: 1074
 Conc: 0.51 ng/ml



#35 AR-1260-5

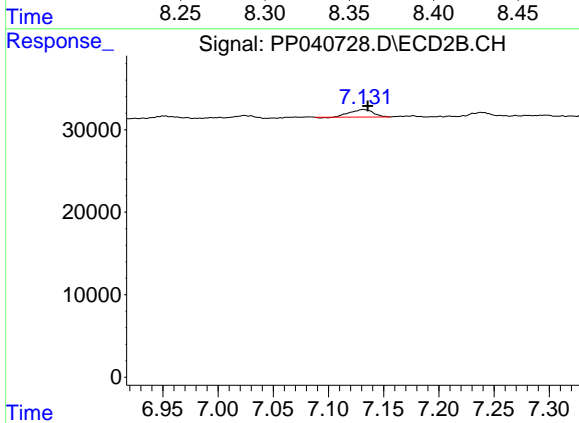
R.T.: 0.000 min
 Exp R.T. : 7.689 min
 Response: 0
 Conc: N.D.



#36 AR-1262-1

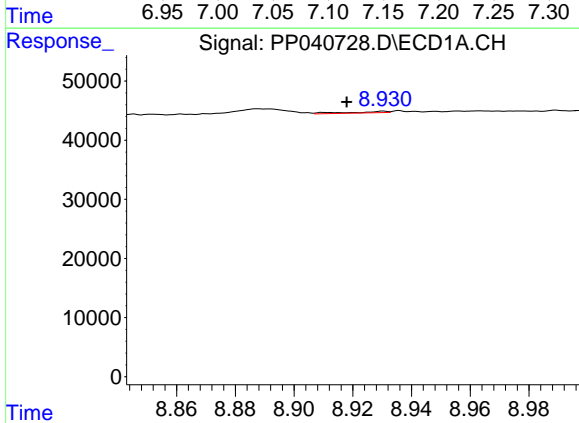
R.T.: 8.349 min
 Delta R.T.: -0.025 min
 Response: 9613
 Conc: 7.67 ng/ml

Instrument :
 ECD_P
 ClientSampleId :



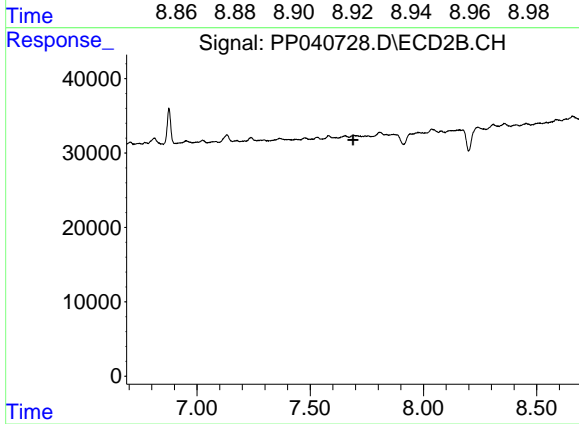
#36 AR-1262-1

R.T.: 7.132 min
 Delta R.T.: -0.004 min
 Response: 13098
 Conc: 22.73 ng/ml



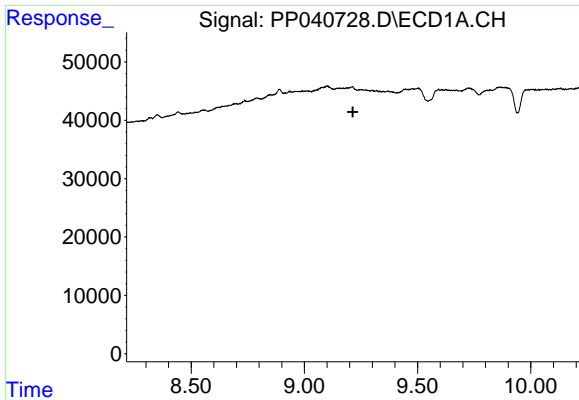
#37 AR-1262-2

R.T.: 8.930 min
 Delta R.T.: 0.013 min
 Response: 2226
 Conc: 0.98 ng/ml



#37 AR-1262-2

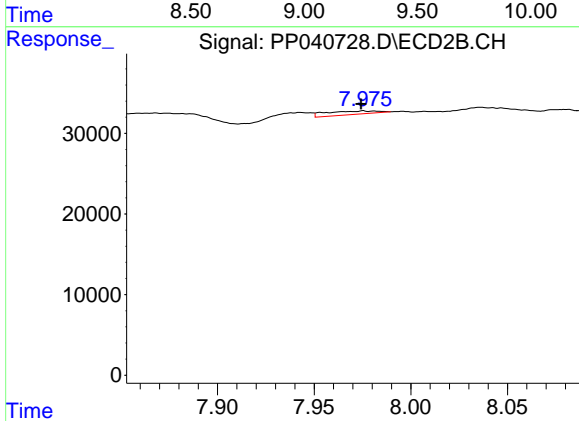
R.T.: 0.000 min
 Exp R.T. : 7.689 min
 Response: 0
 Conc: N.D.



#38 AR-1262-3

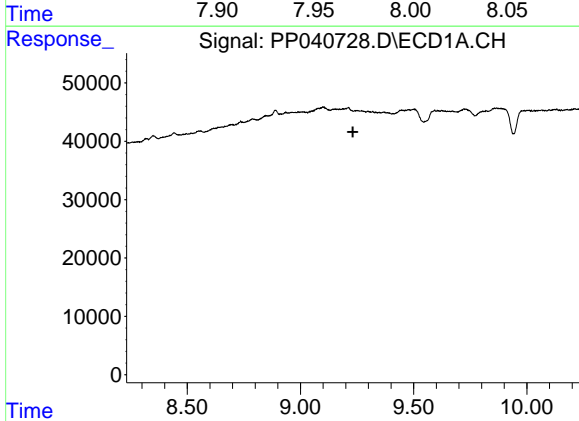
R.T.: 0.000 min
 Exp R.T.: 9.214 min
 Response: 0
 Conc: N.D.

Instrument :
 ECD_P
 ClientSampleId :



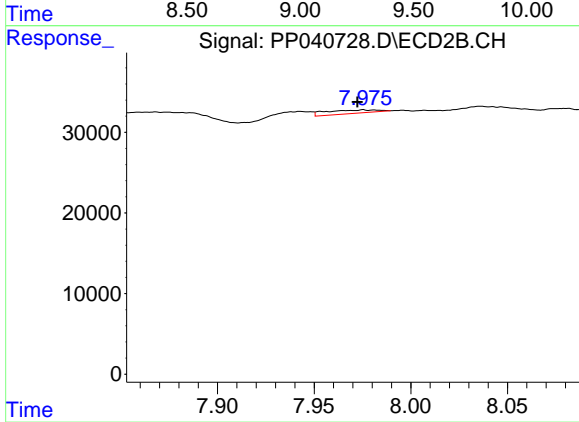
#38 AR-1262-3

R.T.: 7.975 min
 Delta R.T.: 0.001 min
 Response: 7832
 Conc: 10.10 ng/ml



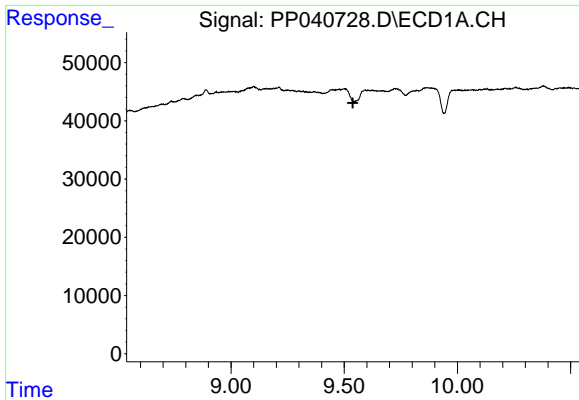
#41 AR-1268-1

R.T.: 0.000 min
 Exp R.T.: 9.232 min
 Response: 0
 Conc: N.D.



#41 AR-1268-1

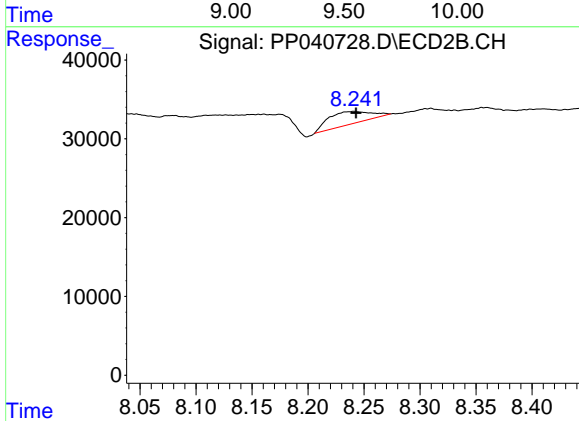
R.T.: 7.975 min
 Delta R.T.: 0.003 min
 Response: 7832
 Conc: 3.65 ng/ml



#43 AR-1268-3

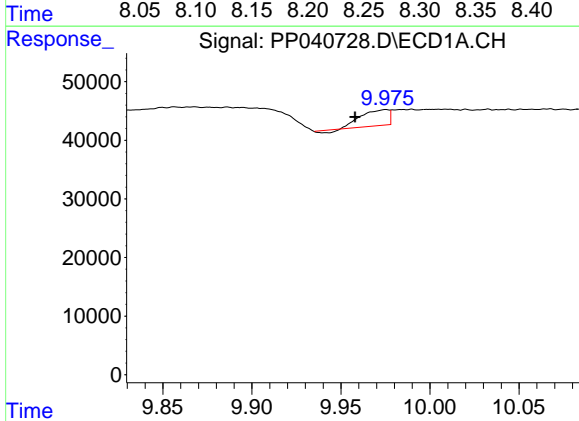
R.T.: 0.000 min
 Exp R.T.: 9.538 min
 Response: 0
 Conc: N.D.

Instrument :
 ECD_P
 ClientSampleId :



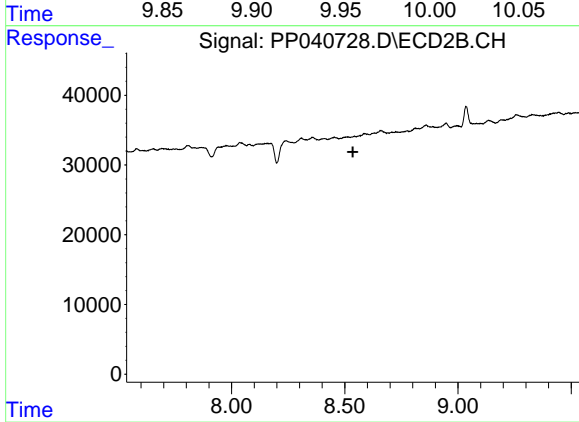
#43 AR-1268-3

R.T.: 8.241 min
 Delta R.T.: -0.002 min
 Response: 42191
 Conc: 24.15 ng/ml



#44 AR-1268-4

R.T.: 9.975 min
 Delta R.T.: 0.018 min
 Response: 28004
 Conc: 27.56 ng/ml



#44 AR-1268-4

R.T.: 0.000 min
 Exp R.T.: 8.536 min
 Response: 0
 Conc: N.D.