

Data Path : Z:\pestpcbsrv\HPCHEM1\ECD\_P\Data\PP110723\  
 Data File : PP061510.D  
 Signal(s) : Signal #1: ECD1A.ch Signal #2: ECD2B.ch  
 Acq On : 07 Nov 2023 17:54  
 Operator : YP\AJ  
 Sample : AR1242ICC750  
 Misc :  
 ALS Vial : 15 Sample Multiplier: 1

Instrument :  
 ECD\_P  
 ClientSampleId :

Integration File signal 1: autoint1.e  
 Integration File signal 2: autoint2.e  
 Quant Time: Nov 08 04:14:09 2023  
 Quant Method : Z:\pestpcbsrv\HPCHEM1\ECD\_P\methods\PP110723.M  
 Quant Title : GC EXTRACTABLES  
 QLast Update : Wed Nov 08 04:11:22 2023  
 Response via : Initial Calibration  
 Integrator: ChemStation

Volume Inj. : 2 µl  
 Signal #1 Phase : ZB-MR1 Signal #2 Phase: ZB-MR2  
 Signal #1 Info : 30Mx0.32mmx 0.50µ Signal #2 Info : 30M x 0.32mm x 0.25µm

Compound	RT#1	RT#2	Resp#1	Resp#2	ng/ml	ng/ml
-----						
System Monitoring Compounds						
1) SA Tetrachlo...	4.570	3.700	193.2E6	119.2E6	73.365	75.323
2) SA Decachlor...	10.564	8.778	142.8E6	105.1E6	71.991	69.866
Target Compounds						
16) L4 AR-1242-1	5.765	4.803	47452195	29256632	709.892	695.458
17) L4 AR-1242-2	5.788	4.822	68131845	40554982	707.839	702.683
18) L4 AR-1242-3	5.852	5.000	41917163	23023849	704.037	689.010
19) L4 AR-1242-4	5.952	5.085	34631838	22981358	707.744	683.417
20) L4 AR-1242-5	6.702	5.614	29144467	28163269	630.209	692.475
-----						

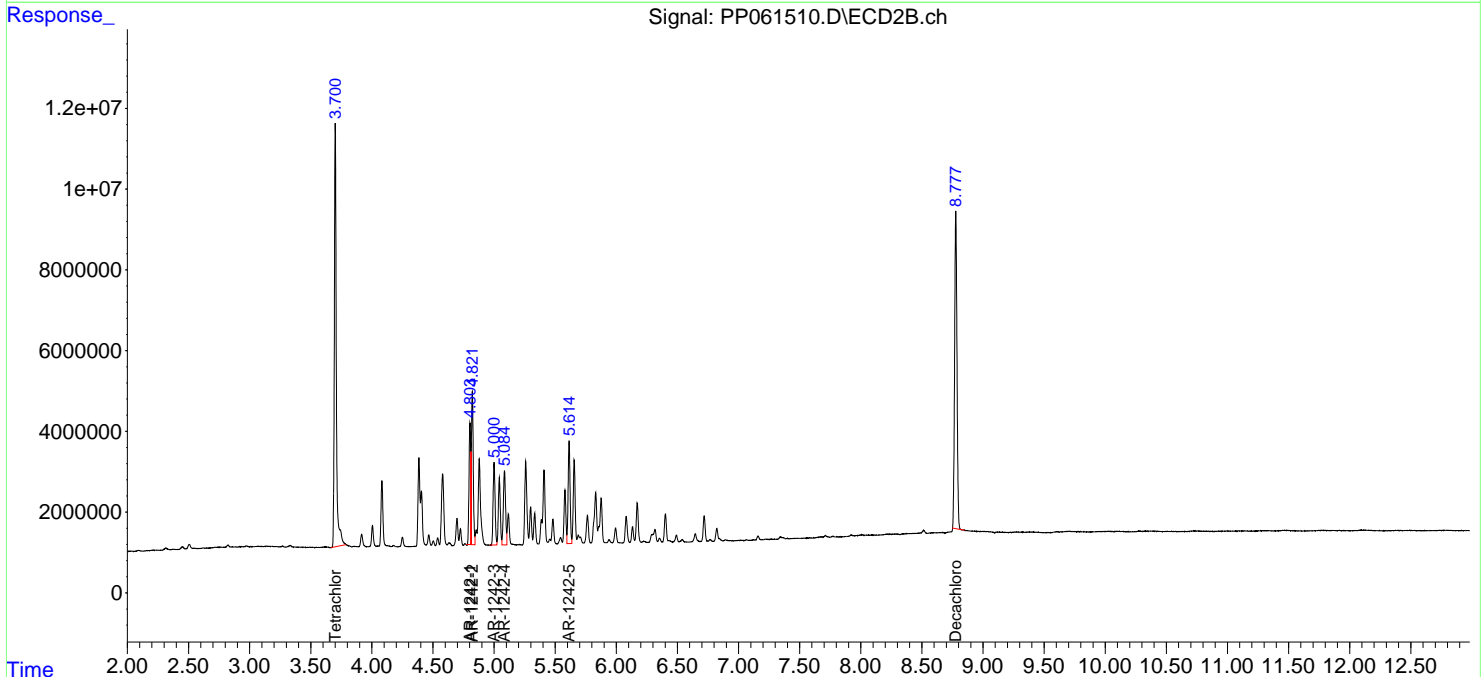
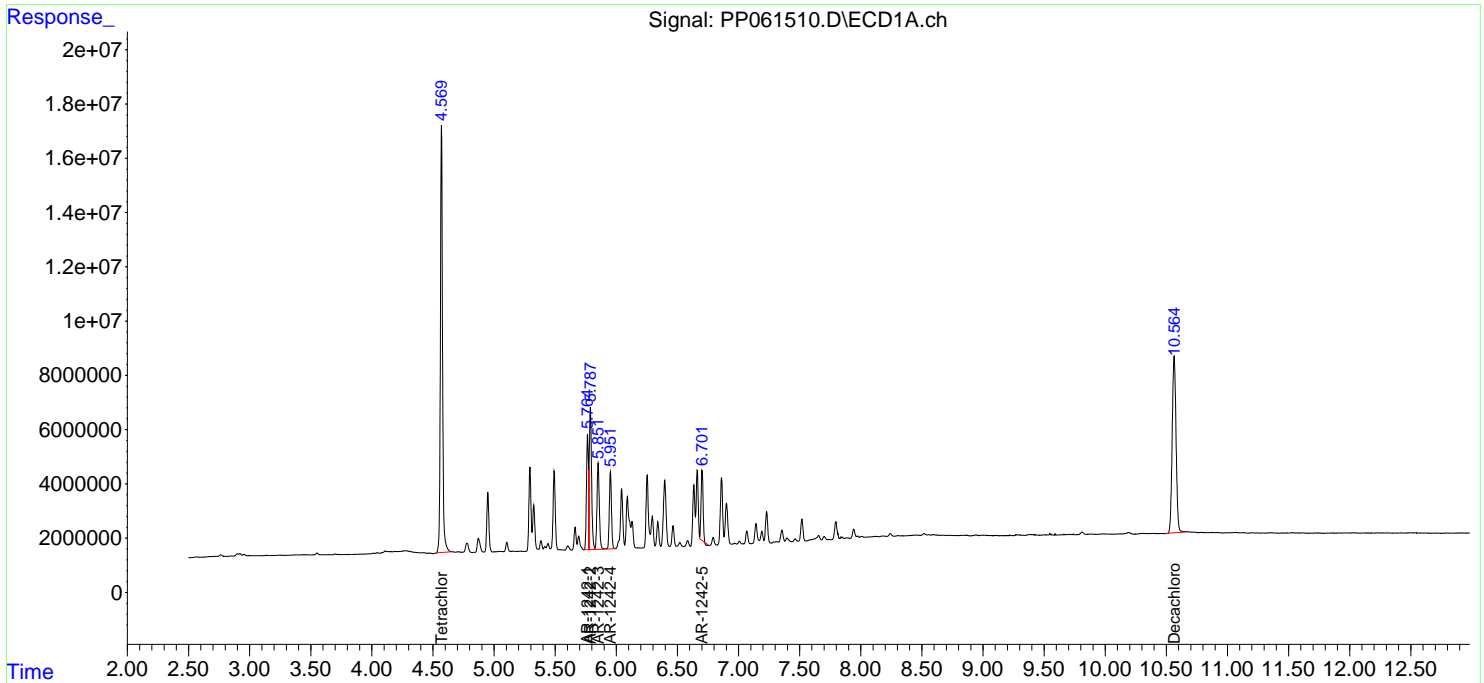
(f)=RT Delta > 1/2 Window (#)=Amounts differ by > 25% (m)=manual int.

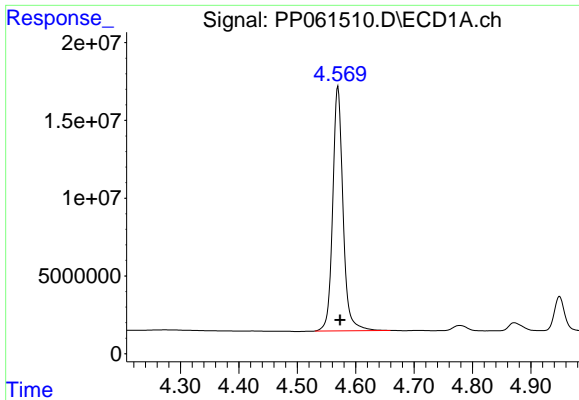
Data Path : Z:\pestpcbsrv\HPCHEM1\ECD\_P\Data\PP110723\  
 Data File : PP061510.D  
 Signal(s) : Signal #1: ECD1A.ch Signal #2: ECD2B.ch  
 Acq On : 07 Nov 2023 17:54  
 Operator : YP\AJ  
 Sample : AR1242ICC750  
 Misc :  
 ALS Vial : 15 Sample Multiplier: 1

Instrument :  
 ECD\_P  
 ClientSampleId :

Integration File signal 1: autoint1.e  
 Integration File signal 2: autoint2.e  
 Quant Time: Nov 08 04:14:09 2023  
 Quant Method : Z:\pestpcbsrv\HPCHEM1\ECD\_P\methods\PP110723.M  
 Quant Title : GC EXTRACTABLES  
 QLast Update : Wed Nov 08 04:11:22 2023  
 Response via : Initial Calibration  
 Integrator: ChemStation

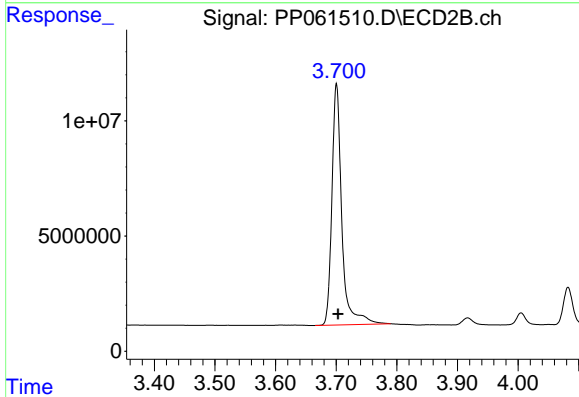
Volume Inj. : 2 µl  
 Signal #1 Phase : ZB-MR1 Signal #2 Phase: ZB-MR2  
 Signal #1 Info : 30Mx0.32mmx 0.50µ Signal #2 Info : 30M x 0.32mm x 0.25µm



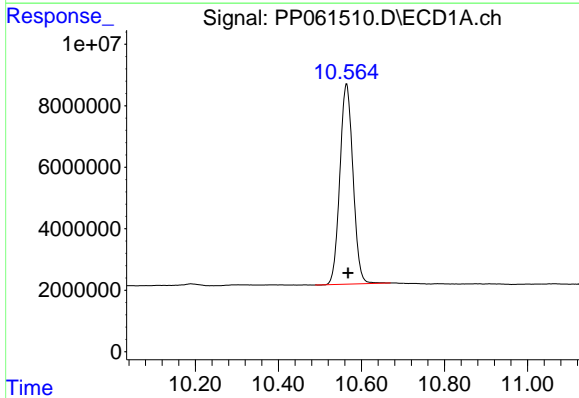


#1 Tetrachloro-m-xylene  
 R.T.: 4.570 min  
 Delta R.T.: -0.003 min  
 Response: 193245644  
 Conc: 73.36 ng/ml

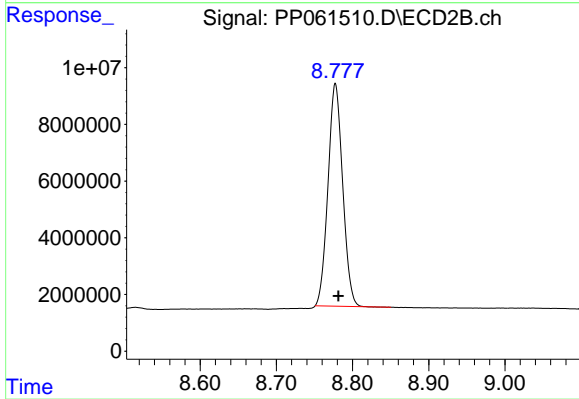
Instrument :  
 ECD\_P  
 ClientSampleId :



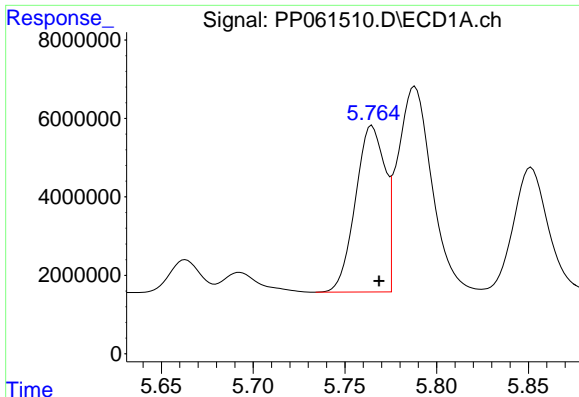
#1 Tetrachloro-m-xylene  
 R.T.: 3.700 min  
 Delta R.T.: -0.003 min  
 Response: 119211112  
 Conc: 75.32 ng/ml



#2 Decachlorobiphenyl  
 R.T.: 10.564 min  
 Delta R.T.: -0.004 min  
 Response: 142818167  
 Conc: 71.99 ng/ml



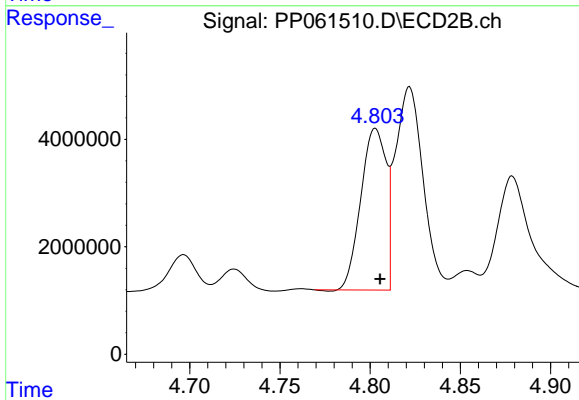
#2 Decachlorobiphenyl  
 R.T.: 8.778 min  
 Delta R.T.: -0.004 min  
 Response: 105080152  
 Conc: 69.87 ng/ml



#16 AR-1242-1

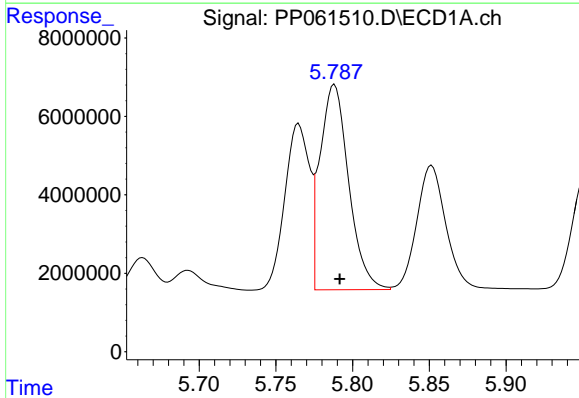
R.T.: 5.765 min  
 Delta R.T.: -0.004 min  
 Response: 47452195  
 Conc: 709.89 ng/ml

Instrument :  
 ECD\_P  
 ClientSampleId :



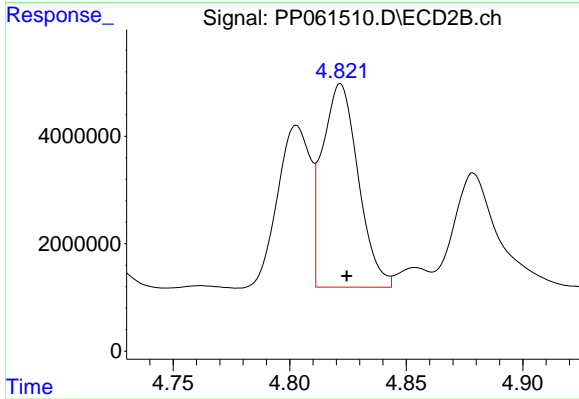
#16 AR-1242-1

R.T.: 4.803 min  
 Delta R.T.: -0.002 min  
 Response: 29256632  
 Conc: 695.46 ng/ml



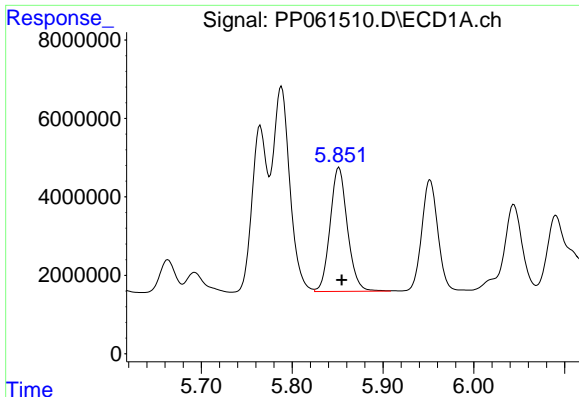
#17 AR-1242-2

R.T.: 5.788 min  
 Delta R.T.: -0.003 min  
 Response: 68131845  
 Conc: 707.84 ng/ml



#17 AR-1242-2

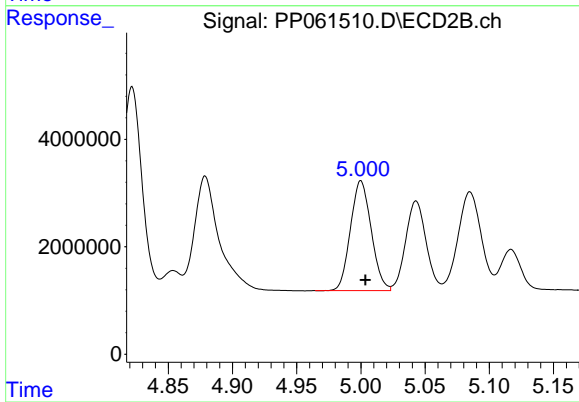
R.T.: 4.822 min  
 Delta R.T.: -0.003 min  
 Response: 40554982  
 Conc: 702.68 ng/ml



#18 AR-1242-3

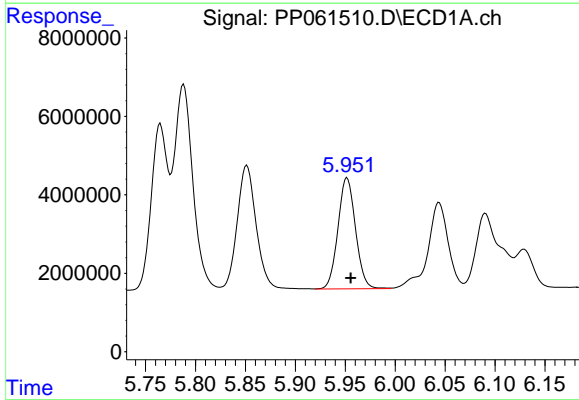
R.T.: 5.852 min  
 Delta R.T.: -0.003 min  
 Response: 41917163  
 Conc: 704.04 ng/ml

Instrument :  
 ECD\_P  
 ClientSampleId :



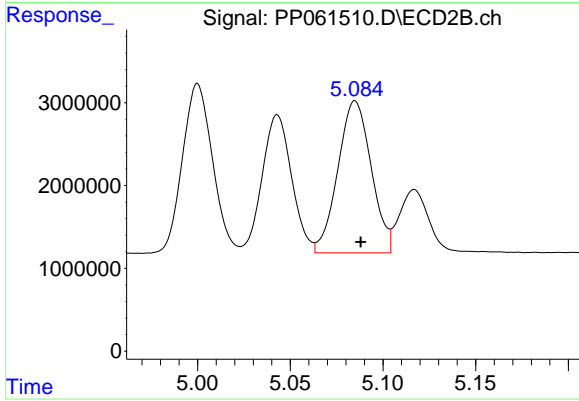
#18 AR-1242-3

R.T.: 5.000 min  
 Delta R.T.: -0.004 min  
 Response: 23023849  
 Conc: 689.01 ng/ml



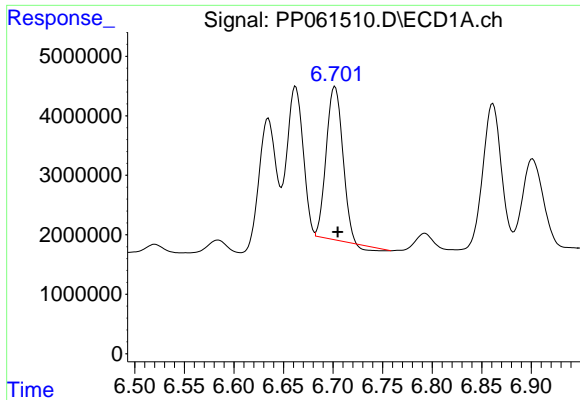
#19 AR-1242-4

R.T.: 5.952 min  
 Delta R.T.: -0.004 min  
 Response: 34631838  
 Conc: 707.74 ng/ml



#19 AR-1242-4

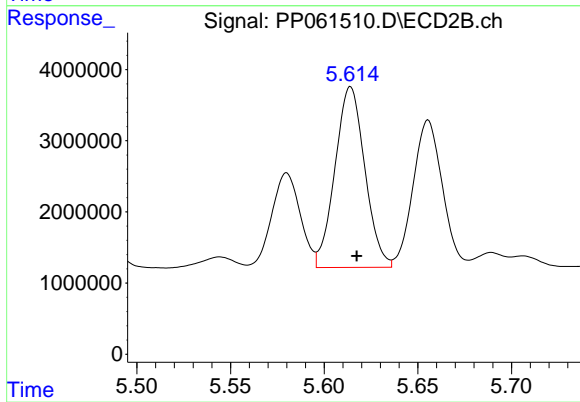
R.T.: 5.085 min  
 Delta R.T.: -0.003 min  
 Response: 22981358  
 Conc: 683.42 ng/ml



#20 AR-1242-5

R.T.: 6.702 min  
Delta R.T.: -0.003 min  
Response: 29144467  
Conc: 630.21 ng/ml

Instrument :  
ECD\_P  
ClientSampleId :



#20 AR-1242-5

R.T.: 5.614 min  
Delta R.T.: -0.003 min  
Response: 28163269  
Conc: 692.47 ng/ml