

Data Path : Z:\pestpcbsrv\HPCHEM1\ECD_P\Data\PP110821\
 Data File : PP040802.D
 Signal(s) : Signal #1: ECD1A.CH Signal #2: ECD2B.CH
 Acq On : 08 Nov 2021 23:15
 Operator : AJ\MA
 Sample : I.BLK
 Misc :
 ALS Vial : 2 Sample Multiplier: 1

Instrument :
 ECD_P
 ClientSampleId :
 I.BLK

Integration File signal 1: autoint1.e
 Integration File signal 2: autoint2.e
 Quant Time: Nov 09 00:41:03 2021
 Quant Method : Z:\pestpcbsrv\HPCHEM1\ECD_P\methods\PP110421.M
 Quant Title : GC EXTRACTABLES
 QLast Update : Thu Nov 04 11:28:51 2021
 Response via : Initial Calibration
 Integrator: ChemStation 6890 Scale Mode: Small noise peaks clipped

Volume Inj. : 2 µl
 Signal #1 Phase : ZB-MR1 Signal #2 Phase: ZB-MR2
 Signal #1 Info : 30Mx0.32mmx 0.50µ Signal #2 Info : 30M x 0.32mm x 0.25µm

Compound	RT#1	RT#2	Resp#1	Resp#2	ng/ml	ng/ml

System Monitoring Compounds						
1) SA Tetrachlo...	4.762	3.766	455994	574318	22.509	23.932
2) SA Decachlor...	10.667	9.034	463281	379210	21.753	21.715

Target Compounds

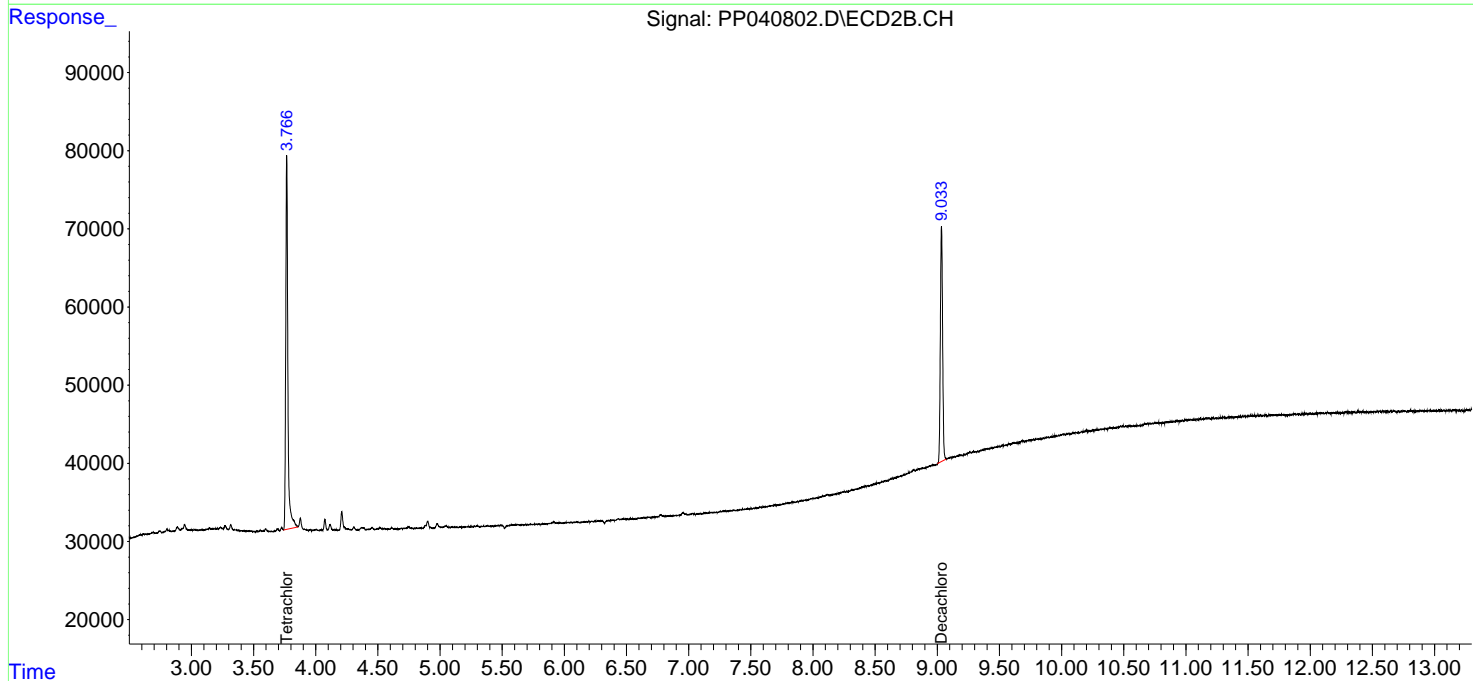
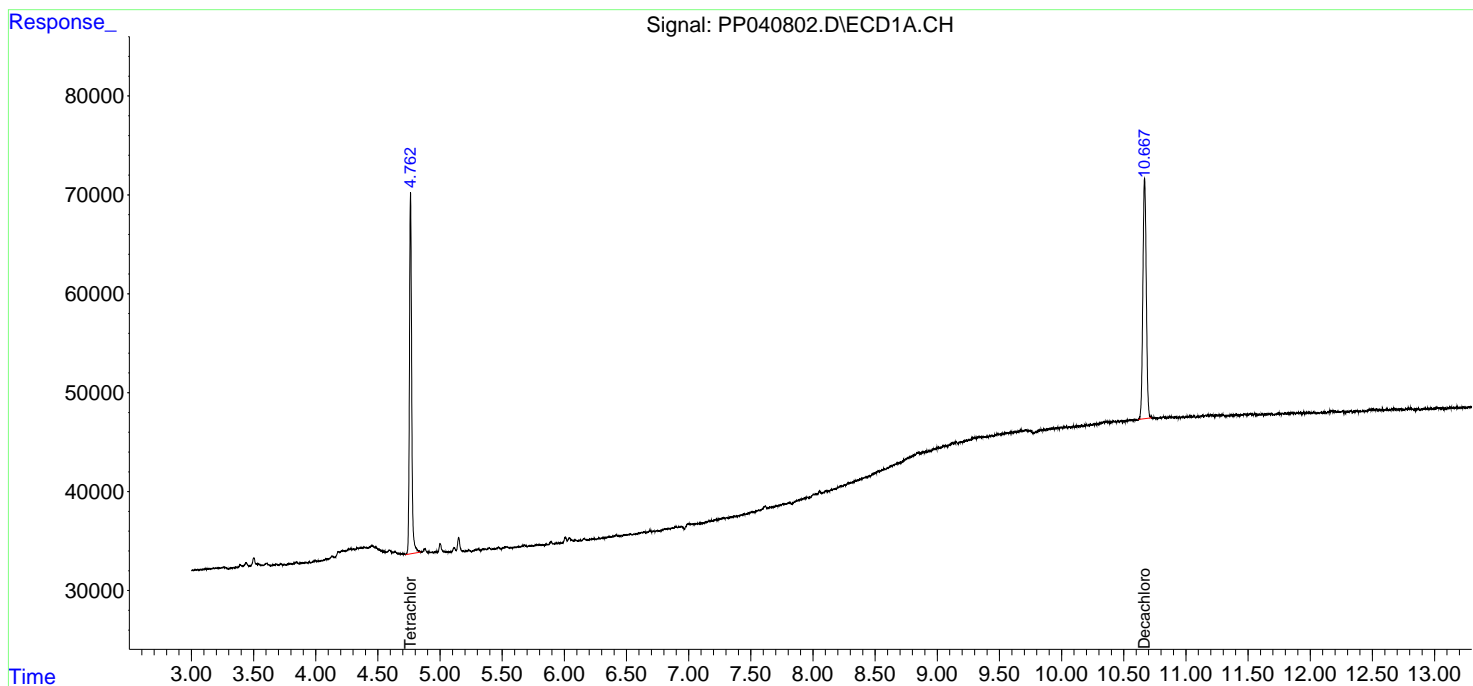
 (f)=RT Delta > 1/2 Window (#)=Amounts differ by > 25% (m)=manual int.

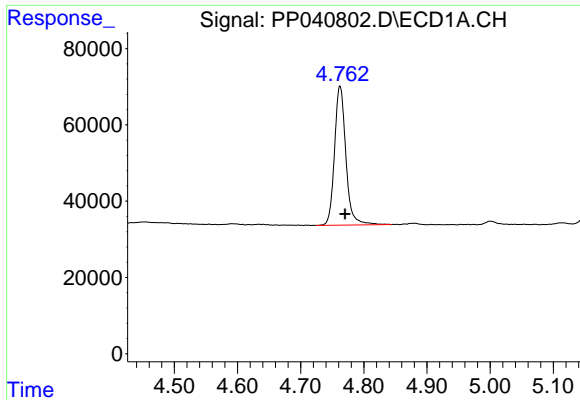
Data Path : Z:\pestpcbsrv\HPCHEM1\ECD_P\Data\PP110821\
 Data File : PP040802.D
 Signal(s) : Signal #1: ECD1A.CH Signal #2: ECD2B.CH
 Acq On : 08 Nov 2021 23:15
 Operator : AJ\MA
 Sample : I.BLK
 Misc :
 ALS Vial : 2 Sample Multiplier: 1

Instrument :
 ECD_P
 ClientSampleId :
 I.BLK

Integration File signal 1: autoint1.e
 Integration File signal 2: autoint2.e
 Quant Time: Nov 09 00:41:03 2021
 Quant Method : Z:\pestpcbsrv\HPCHEM1\ECD_P\methods\PP110421.M
 Quant Title : GC EXTRACTABLES
 QLast Update : Thu Nov 04 11:28:51 2021
 Response via : Initial Calibration
 Integrator: ChemStation 6890 Scale Mode: Small noise peaks clipped

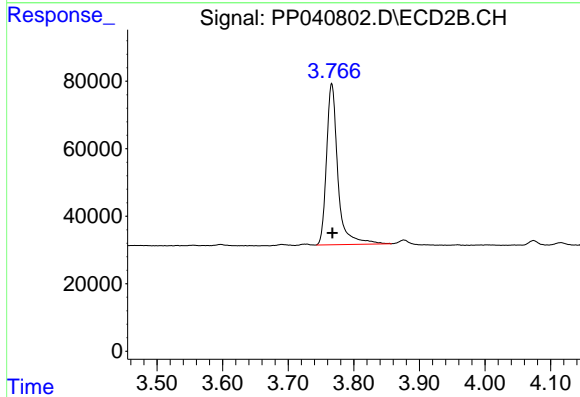
Volume Inj. : 2 µl
 Signal #1 Phase : ZB-MR1 Signal #2 Phase: ZB-MR2
 Signal #1 Info : 30Mx0.32mmx 0.50µ Signal #2 Info : 30M x 0.32mm x 0.25µm



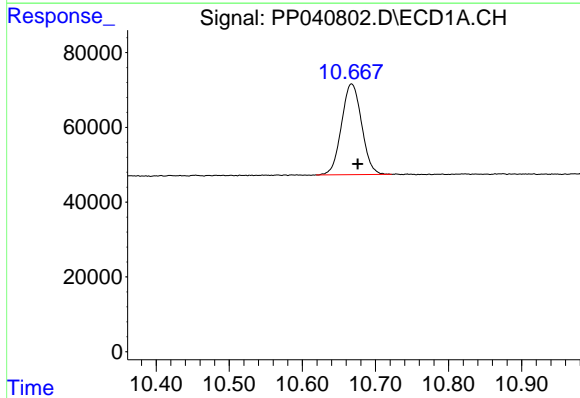


#1 Tetrachloro-m-xylene
 R.T.: 4.762 min
 Delta R.T.: -0.008 min
 Response: 455994
 Conc: 22.51 ng/ml

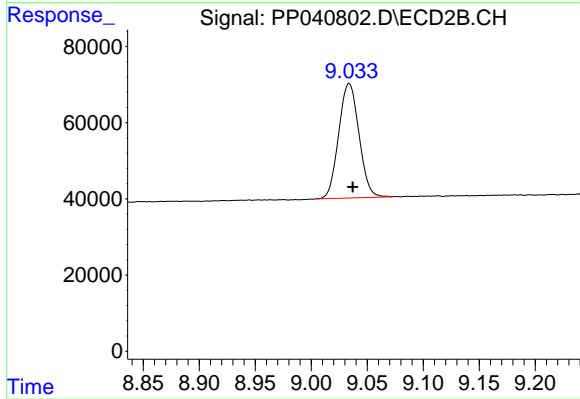
Instrument :
 ECD_P
 ClientSampleId :
 I.BLK



#1 Tetrachloro-m-xylene
 R.T.: 3.766 min
 Delta R.T.: 0.000 min
 Response: 574318
 Conc: 23.93 ng/ml



#2 Decachlorobiphenyl
 R.T.: 10.667 min
 Delta R.T.: -0.009 min
 Response: 463281
 Conc: 21.75 ng/ml



#2 Decachlorobiphenyl
 R.T.: 9.034 min
 Delta R.T.: -0.003 min
 Response: 379210
 Conc: 21.71 ng/ml