

Data Path : Z:\pestpcbsrv\HPCHEM1\ECD_P\Data\PP110821\
 Data File : PP040805.D
 Signal(s) : Signal #1: ECD1A.CH Signal #2: ECD2B.CH
 Acq On : 09 Nov 2021 00:05
 Operator : AJ\MA
 Sample : M4506-11 10X
 Misc :
 ALS Vial : 34 Sample Multiplier: 1

Instrument :
 ECD_P
ClientSampleId :
 SEC-2021-21A

Integration File signal 1: autoint1.e
 Integration File signal 2: autoint2.e
 Quant Time: Nov 09 00:41:36 2021
 Quant Method : Z:\pestpcbsrv\HPCHEM1\ECD_P\methods\PP110421.M
 Quant Title : GC EXTRACTABLES
 QLast Update : Thu Nov 04 11:28:51 2021
 Response via : Initial Calibration
 Integrator: ChemStation 6890 Scale Mode: Small noise peaks clipped

Volume Inj. : 2 µl
 Signal #1 Phase : ZB-MR1 Signal #2 Phase: ZB-MR2
 Signal #1 Info : 30Mx0.32mmx 0.50µ Signal #2 Info : 30M x 0.32mm x 0.25µm

Compound	RT#1	RT#2	Resp#1	Resp#2	ng/ml	ng/ml

System Monitoring Compounds						
1) SA Tetrachlo...	4.763	3.765	34062	51660	1.681	2.153 #
2) SA Decachlor...	10.668	9.035	35431	26580	1.664	1.522

Target Compounds

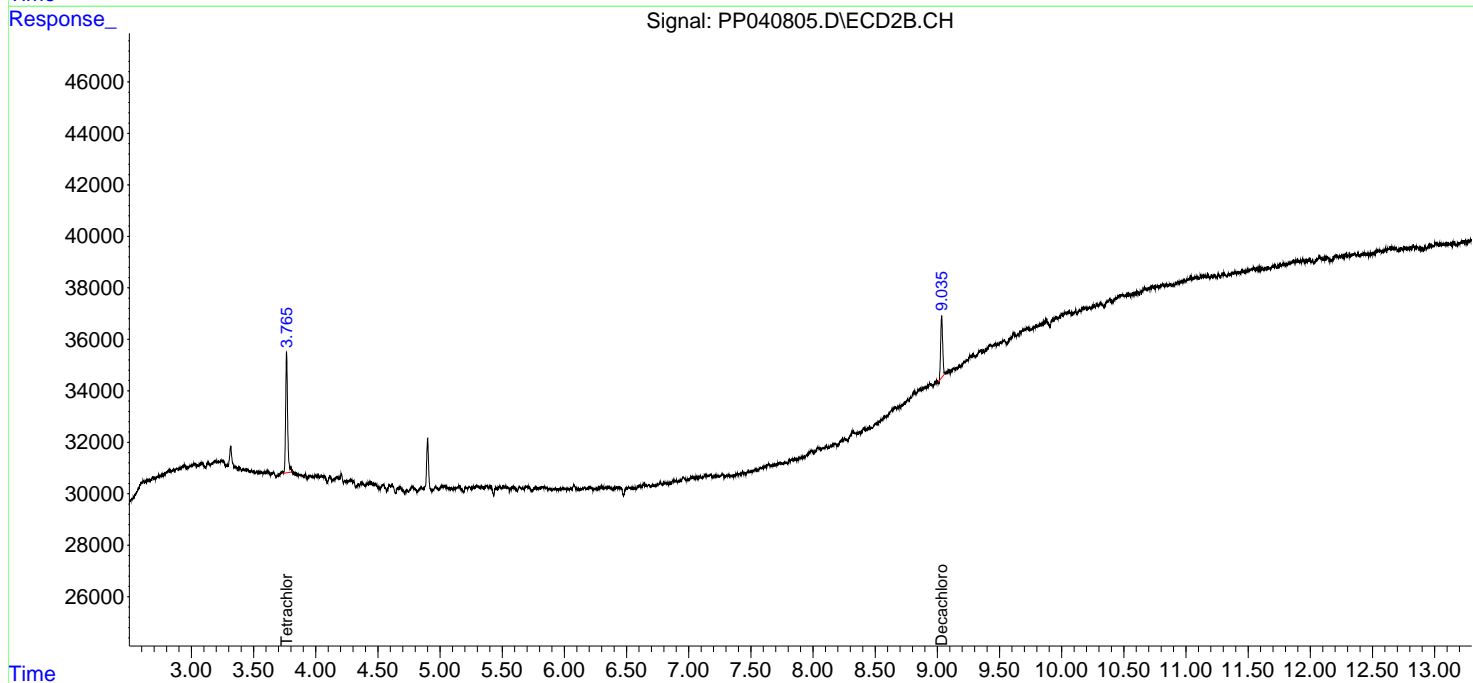
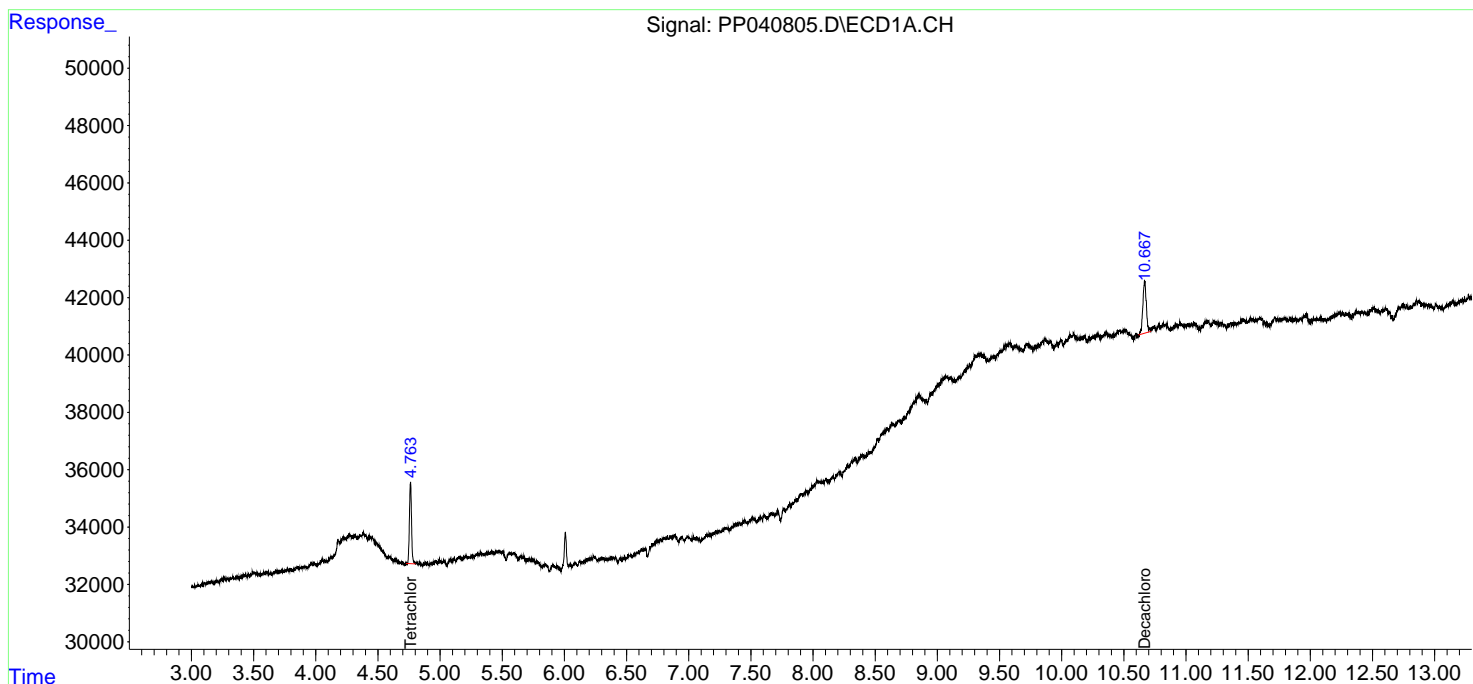
(f)=RT Delta > 1/2 Window (#)=Amounts differ by > 25% (m)=manual int.

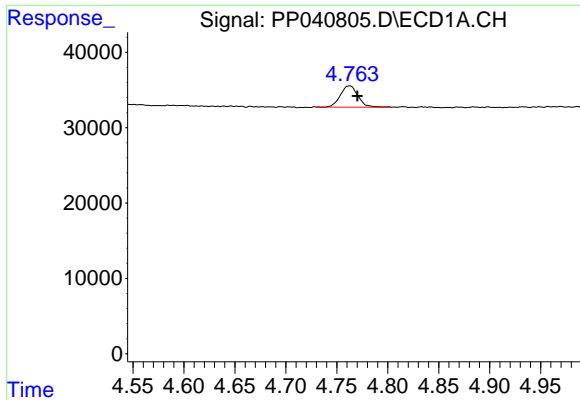
Data Path : Z:\pestpcbsrv\HPCHEM1\ECD_P\Data\PP110821\
 Data File : PP040805.D
 Signal(s) : Signal #1: ECD1A.CH Signal #2: ECD2B.CH
 Acq On : 09 Nov 2021 00:05
 Operator : AJ\MA
 Sample : M4506-11 10X
 Misc :
 ALS Vial : 34 Sample Multiplier: 1

Instrument :
 ECD_P
 ClientSampleId :
 SEC-2021-21A

Integration File signal 1: autoint1.e
 Integration File signal 2: autoint2.e
 Quant Time: Nov 09 00:41:36 2021
 Quant Method : Z:\pestpcbsrv\HPCHEM1\ECD_P\methods\PP110421.M
 Quant Title : GC EXTRACTABLES
 QLast Update : Thu Nov 04 11:28:51 2021
 Response via : Initial Calibration
 Integrator: ChemStation 6890 Scale Mode: Small noise peaks clipped

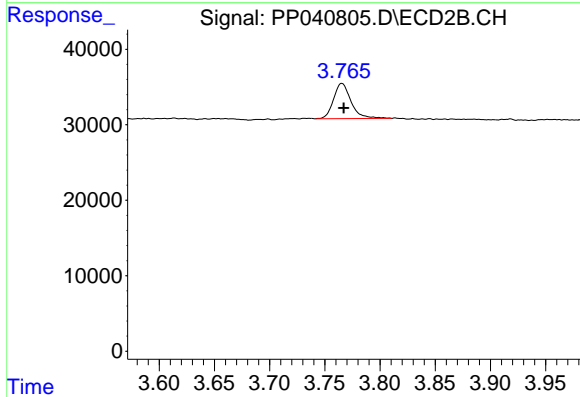
Volume Inj. : 2 µl
 Signal #1 Phase : ZB-MR1 Signal #2 Phase: ZB-MR2
 Signal #1 Info : 30Mx0.32mmx 0.50µ Signal #2 Info : 30M x 0.32mm x 0.25µm



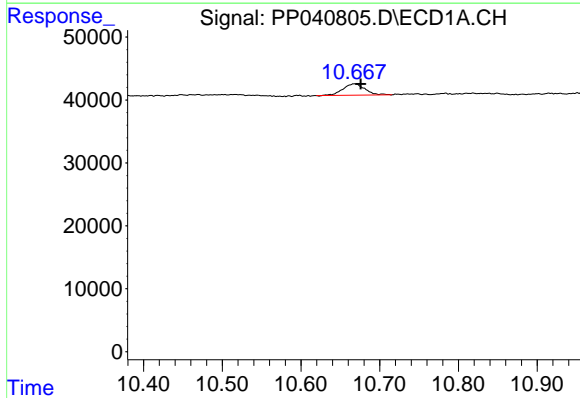


#1 Tetrachloro-m-xylene
 R.T.: 4.763 min
 Delta R.T.: -0.007 min
 Response: 34062
 Conc: 1.68 ng/ml

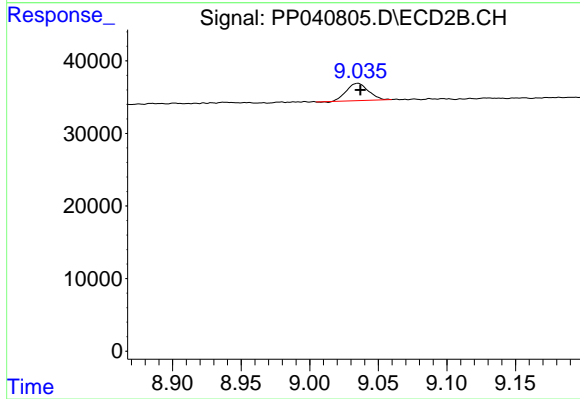
Instrument :
 ECD_P
 ClientSampleId :
 SEC-2021-21A



#1 Tetrachloro-m-xylene
 R.T.: 3.765 min
 Delta R.T.: -0.002 min
 Response: 51660
 Conc: 2.15 ng/ml



#2 Decachlorobiphenyl
 R.T.: 10.668 min
 Delta R.T.: -0.008 min
 Response: 35431
 Conc: 1.66 ng/ml



#2 Decachlorobiphenyl
 R.T.: 9.035 min
 Delta R.T.: -0.002 min
 Response: 26580
 Conc: 1.52 ng/ml